

GAS MOTORCOACH

GAS MOTORCOACH

20 **B** 22

**BAY STAR**

NEWMAR





## Ready for Adventure

When you're ready to go, the 2022 Bay Star is ready too. No matter where you're going or what you want to see, our most popular gas coach makes it easy to enjoy the ride—as well as the destination.

Every 2022 Bay Star is built on a next-generation Ford® F-Series Class

A Motorhome Chassis, and is powered by a 7.3-liter V8 engine with

350 horsepower and 468 lb./ft. of torque. Ready to go?







*Gable full-paint Masterpiece Finish™*

## From Long Trips to Long Weekends

The 2022 Bay Star combines amenities and innovations seamlessly into an accessible gas coach. Whether you're on a family vacation or a solo getaway—or anywhere in between—the Bay Star offers plenty of flexibility and customization to make sure you're comfortable as you cruise to wherever you're going. And in addition to the chassis, the going is even easier with standard Electronic Stability Control and heavy duty sway bars for an even ride. And with 11 floor plans, including one new for 2022, it's easy to find the one that fits your lifestyle.



## Escape to Anywhere

Whether you're inside the coach or out, you'll enjoy the escapism the Bay Star offers. Inside the spacious cabin, you can sink into the Williamsburg Comfort Lounge sofa and enjoy the Samsung® LED TV—and add a Bose® soundbar and your choice of Wi-Fi solution to stream to your heart's content. Six-panel pass-through doors and optional luxury vinyl tile flooring are also accentuated by LED lighting. And you can customize with options like recliners, a tri-fold sleeper sofa, and two ottomans.



*Floor plan 3609 with Gable décor  
and Calypso Glazed Maple cabinetry*





## Your Trip Starts Here

In the cockpit of the Bay Star, you'll find several amenities to make your drive as enjoyable as your stay. A six-way power captain's chair keeps you comfortable during travel, and an optional folding cockpit table is available. An optional Xite dash radio offers a 6.5" monitor and includes a Nav-N-Go navigation system, which takes the coach's dimensions into account to provide you with the best traveling route.

Throughout the remainder of the living space, you can get cozy with an optional fireplace, or stay cool with the Penguin™ heat pump air conditioner. Certain floor plans also offer drop-down bunk beds over the captain's seats.





## Gather Round

The kitchen of the Bay Star is designed to make cooking simple, so you can focus on enjoying your escape. A wood-panel refrigerator comes standard, though you can upgrade to a larger Norcold® refrigerator with an icemaker. A Whirlpool® microwave also comes standard, and an optional Suburban Elite Series three-burner cooktop features LED lighting on the knobs. Handmade cabinets include concealed hinges and soft-close drawers. Plus, a Villa Comfort Fit booth dinette comes standard, and even converts into an extra bed. And for 2022, the kitchen windows are even larger to let in more light.







## Sleep In

Get everything you want in a bedroom in the Bay Star.

A queen- or king-sized pillow top mattress is ready to greet you, depending on the floor plan. Get plenty of storage space with a large dresser with drawers and a lit wardrobe, so you can pack anything you want to bring along on your escape. An additional Samsung® LED

TV is also there for a little late-night entertainment.





## Built-In Escape

The standard master bath on all Bay Star floor plans offers you the getaway you need. An ABS shower with new sliding glass door, solid surface sink top, vinyl flooring, and medicine cabinet—plus additional storage—are all included. A shower skylight lets in natural light. Many floor plans feature linen closets for towels, sheets, and more. Floor plan 3609 also offers a mid-ship half-bath with a corner vanity and more. Select floor plans offer an optional two piece stacked washer/dryer.







## Outdoors for Everyone

Bay Star floor plan 3811 is designed for accessibility. You'll still find all of the amenities you expect from a Newmar coach, but with wheelchair-friendly designs. A BraunAbility® electric lift on the large door is standard, along with a large 48" x 36" roll-in shower, larger wardrobe, and floor-to-ceiling mirrored doors. All light switches, drawers, and the countertops have been lowered for easier access from a wheelchair, and the convection microwave has been relocated below the cooktop. You'll find more spacious areas throughout the coach as well, including extra-wide aisleways.







## Get Outside

The 2022 Bay Star is made to make vacations easy and more fun, whether you're hitting campgrounds or going off the grid. Lit basement storage means you can bring along all of your favorite camp toys and necessities to better enjoy the lakes, trails, and trees. A 5.5 kW Cummins Onan® generator gives you plenty of power for amenities like the patio awning with LED lights. An outdoor entertainment center means you can enjoy a great game in the great outdoors too.



## EXTERIORS



### GABLE EXTERIOR

Awning Color: Charcoal Tweed



### GABLE INTERIOR

a. Furniture/Fabric b. Flooring c. Counter Top



### RYDER EXTERIOR

Awning Color: Linen Tweed



### URBAN EXTERIOR

Awning Color: Charcoal Tweed



# INTERIOR DÉCOR

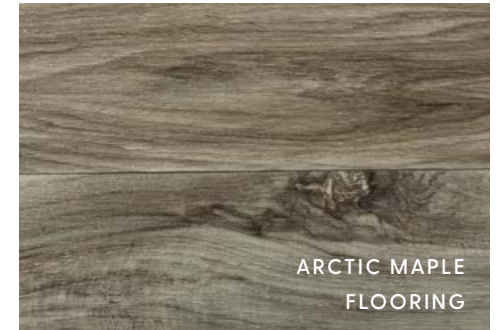


## RYDER INTERIOR

a. Furniture/Fabric b. Flooring c. Counter Top



ARCTIC/GLACIER  
GLAZED MAPLE



ARCTIC MAPLE  
FLOORING



HARBOUR/NEWPORT  
GLAZED MAPLE



HARBOUR MAPLE  
FLOORING



## URBAN INTERIOR

a. Furniture/Fabric b. Flooring c. Counter Top



CALYPSO/BERMUDA  
GLAZED MAPLE

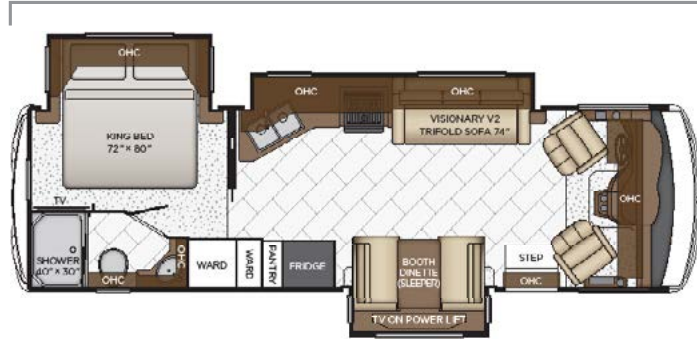


CALYPSO MAPLE  
FLOORING



# BAY STAR FLOOR PLANS

Length: 30' 11"



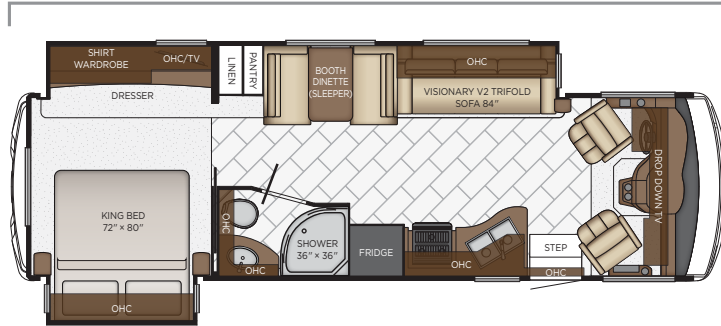
<b>3005</b>	Length	30' 11"	Grey Tank	60 gal.
	Width	101.5"	Sewage Tank	40 gal.
	App. Overall Height	12' 08"	Water Tank	75 gal.
	Interior Width	95.5"	Propane Tank	25 gal.
	Interior Height	80"	Furnace	40,000 btu

Length: 30' 11"



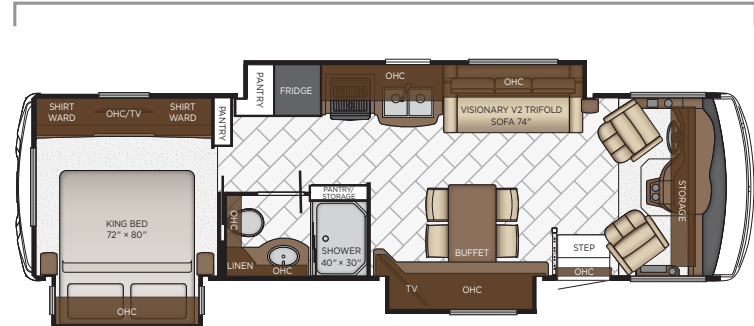
<b>3014</b>	Length	30' 11"	Grey Tank	60 gal.
	Width	101.5"	Sewage Tank	40 gal.
	App. Overall Height	12' 08"	Water Tank	75 gal.
	Interior Width	95.5"	Propane Tank	25 gal.
	Interior Height	80"	Furnace	40,000 btu

Length: 31' 11"



<b>3124</b>	Length	31' 11"	Grey Tank	60 gal.
	Width	101.5"	Sewage Tank	40 gal.
	App. Overall Height	12' 08"	Water Tank	75 gal.
	Interior Width	95.5"	Propane Tank	25 gal.
	Interior Height	80"	Furnace	40,000 btu

Length: 32' 11"

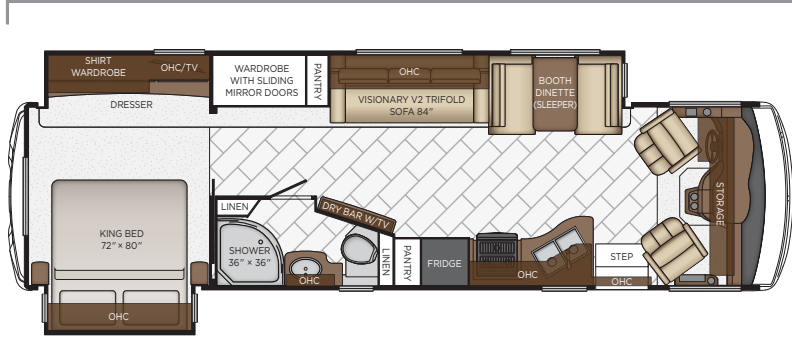


<b>3226</b>	Length	32' 11"	Grey Tank	60 gal.
	Width	101.5"	Sewage Tank	40 gal.
	App. Overall Height	12' 08"	Water Tank	75 gal.
	Interior Width	95.5"	Propane Tank	25 gal.
	Interior Height	80"	Furnace	40,000 btu



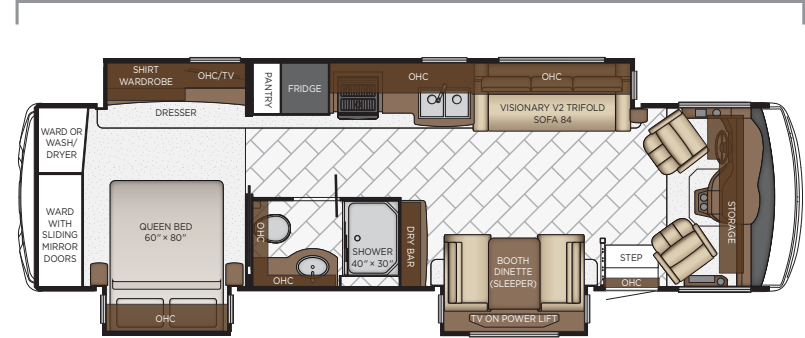
# BAY STAR FLOOR PLANS

Length: 34' 11"



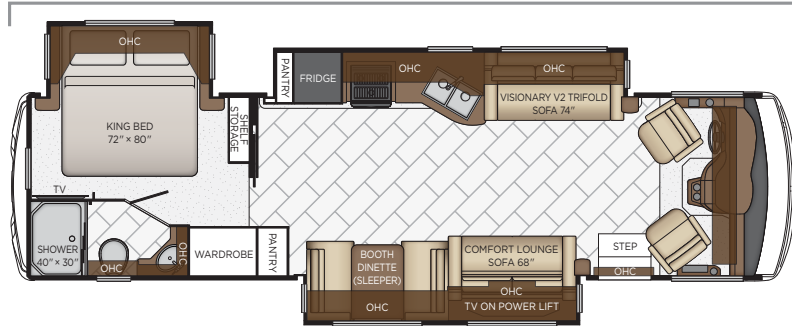
<b>3401</b>	Length	34' 11"	Grey Tank	60 gal.
	Width	101.5"	Sewage Tank	40 gal.
	App. Overall Height	12' 08"	Water Tank	75 gal.
	Interior Width	95.5"	Propane Tank	25 gal.
	Interior Height	80"	Furnace	40,000 btu

Length: 34' 11"



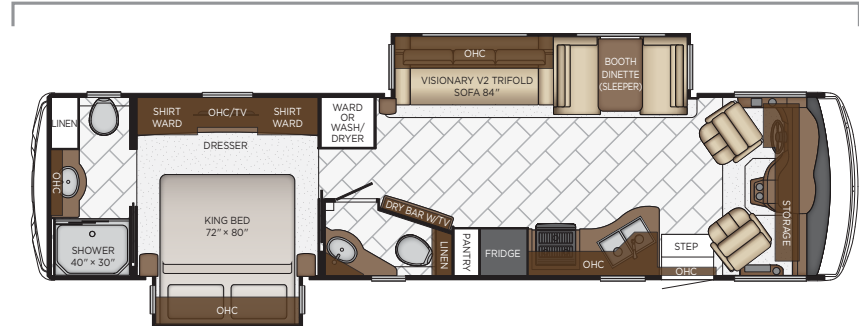
<b>3408</b>	Length	34' 11"	Grey Tank	60 gal.
	Width	101.5"	Sewage Tank	40 gal.
	App. Overall Height	12' 08"	Water Tank	75 gal.
	Interior Width	95.5"	Propane Tank	25 gal.
	Interior Height	80"	Furnace	40,000 btu

Length: 34' 11"



<b>3416</b>	Length	34' 11"	Grey Tank	60 gal.
	Width	101.5"	Sewage Tank	40 gal.
	App. Overall Height	12' 08"	Water Tank	75 gal.
	Interior Width	95.5"	Propane Tank	25 gal.
	Interior Height	80"	Furnace	40,000 btu

Length: 36' 11"



<b>3609</b>	Length	36' 11"	Grey Tank	60 gal.
	Width	101.5"	Sewage Tank	92 gal.
	App. Overall Height	12' 08"	Water Tank	75 gal.
	Interior Width	95.5"	Propane Tank	25 gal.
	Interior Height	80"	Furnace	40,000 btu

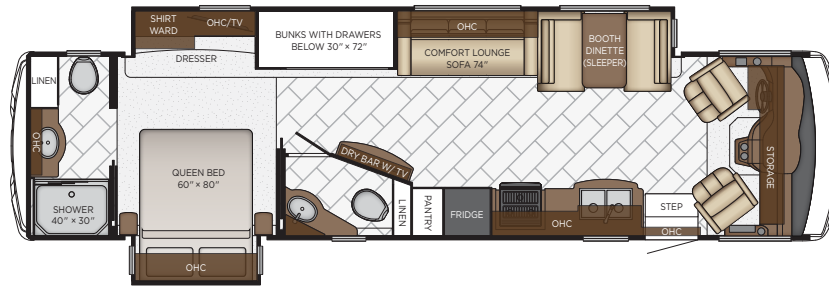






# BAY STAR FLOOR PLANS

Length: 36' 11"

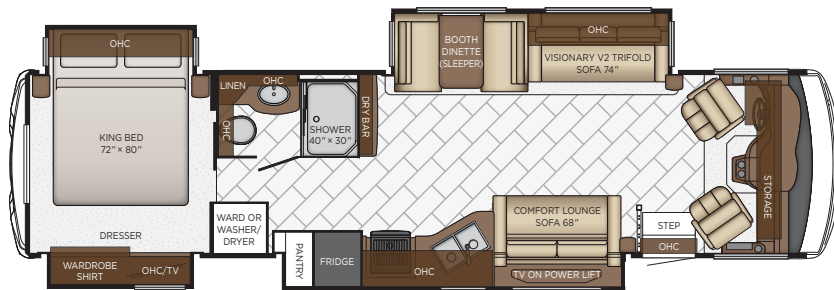


**3616**

Length	36' 11"
Width	101.5"
App. Overall Height	12' 08"
Interior Width	95.5"
Interior Height	80"

Grey Tank	60 gal.
Sewage Tank	92 gal.
Water Tank	75 gal.
Propane Tank	25 gal.
Furnace	40,000 btu

Length: 36' 11"

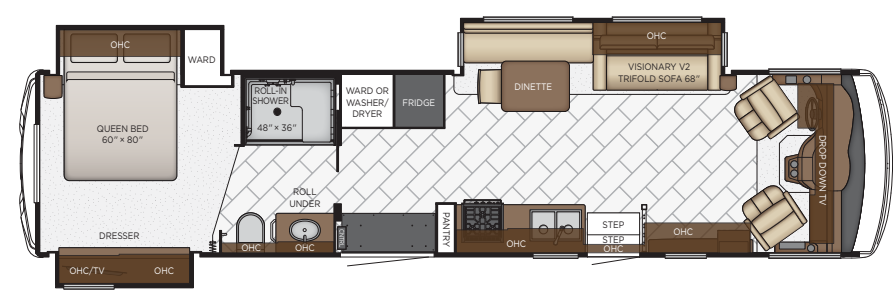


**3626**

Length	36' 11"
Width	101.5"
App. Overall Height	12' 08"
Interior Width	95.5"
Interior Height	80"

Grey Tank	60 gal.
Sewage Tank	40 gal.
Water Tank	75 gal.
Propane Tank	25 gal.
Furnace	40,000 btu

Length: 38' 11"



**3811**

Length	38' 11"
Width	101.5"
App. Overall Height	12' 08"
Interior Width	95.5"
Interior Height	80"

Grey Tank	60 gal.
Sewage Tank	40 gal.
Water Tank	75 gal.
Propane Tank	25 gal.
Furnace	40,000 btu







## QUALITY YOU CAN FEEL

Like a fine home, the 2022 Bay Star is framed 16 inches on center, and is covered by a BriteTEK™ roof with walkable decking and an integrated gutter rail.

FLOOR PLAN	ENGINE HP	AXLE RATIO	FUEL CAP.	WHEEL BASE	FRONT GAWR	REAR GAWR	TAG GAWR	GVWR	GCWR	APP. UVW	APP. NCC
3005	350	5.86	80 gal.	200	8000 lb.	15000 lb.	n/a	22000 lb.	26000 lb.	18881 lb.	3119 lb.
3014	350	5.86	80 gal.	200	8000 lb.	15000 lb.	n/a	22000 lb.	26000 lb.	19050 lb.	2950 lb.
3124	350	5.86	80 gal.	200	8000 lb.	15000 lb.	n/a	22000 lb.	26000 lb.	18805 lb.	3195 lb.
3226	350	5.86	80 gal.	208	8000 lb.	15000 lb.	n/a	22000 lb.	26000 lb.	19500 lb.	2500 lb.
3401	350	6.14	80 gal.	234	9000 lb.	15500 lb.	n/a	24000 lb.	30000 lb.	20275 lb.	3725 lb.
3408	350	6.14	80 gal.	234	9000 lb.	15500 lb.	n/a	24000 lb.	30000 lb.	20965 lb.	3035 lb.
3416	350	6.14	80 gal.	234	9000 lb.	15500 lb.	n/a	24000 lb.	30000 lb.	20744 lb.	3256 lb.
3609	350	6.14	80 gal.	242	9000 lb.	17500 lb.	n/a	26000 lb.	30000 lb.	20525 lb.	5475 lb.
3616	350	6.14	80 gal.	242	9000 lb.	17500 lb.	n/a	26000 lb.	30000 lb.	21655 lb.	4345 lb.
3626	350	6.14	80 gal.	252	9000 lb.	17500 lb.	n/a	26000 lb.	30000 lb.	21765 lb.	4235 lb.
3811	350	6.14	80 gal.	254	9000 lb.	17500 lb.	n/a	26000 lb.	30000 lb.	21950 lb.	4050 lb.

**The content in our literature depicts and describes products that are subject to change. For the most recent images and information, please visit [NewmarCorp.com](https://www.newmarcorp.com).**

Lengths, heights, widths, and dry weights are approximate. Weight will vary based on optional equipment added to the above base weight.

**GAWR:** Gross Axle Weight Rating is the maximum permissible weight for an axle.

**GVWR:** Gross Vehicle Weight Rating is the maximum permissible weight for a fully loaded motor coach.

**GCWR:** Gross Combination Weight Rating is the value specified by the manufacturer of the vehicle as the maximum allowable loaded weight of this motor coach and any towed trailer or towed vehicle.

**UVW:** Unloaded Vehicle Weight is the weight of this motor coach as built at the factory with full fuel, engine oil, and coolants. Does not include cargo, fresh water, propane gas, or dealer-installed accessories.

**NCC:** Net Carrying Capacity is the maximum weight of all occupants, including the driver, personal belongings, food, fresh water, waste water, propane gas, tools, tongue weight of towed vehicle, dealer-installed accessories, etc., that can be carried by the motor coach.

**Specifications supplied by the chassis manufacturer.**

**Bay Star R-Values:**

Roof R-Value = 21

Sidewall R-Value = 11

Floor R-Value = 11



FEATURES AND OPTIONS



Bay Star Dash

EXTERIOR



EXTERIOR FEATURES

Full-Paint Masterpiece Finish™ with Clearcoat Finish
Diamond Shield Protection on Front Cap
Automatic Step for Entrance Door
Convex Exterior Mirrors with Defrost and Remote Control
Rear Hitch for Towing Car
Assist Handle at Entrance Door
Undercoating
Mud Flaps
Smart Level Hydraulic Leveling Jacks with Bluetooth Compatible Touch Pad

OPTIONS

Rear Ladder
Flag Pole Bracket

CONSTRUCTION FEATURES

BriteTEK™ Roof with Walkable Deck
Gelcoated Fiberglass Exterior Sidewalls, Front and Rear Caps
Aluminum-Frame Sidewalls and Roof Construction, on 16" Center
5/8" Foam Insulation Laminated in Sidewalls and Ceiling
Automatic Mechanical Lock Arms on Slideout Rooms-Scissor Style
Polar Pak R19 Batten Insulation in Roof

OPTIONS

Egress Door with Ladder System*
Power Entrance Step Well Cover on 3811
Power Opening Entrance Door for Wheelchair Lift on 3811





WINDOWS, AWNINGS, & VENTS

One Piece Tinted Windshield
Frameless Double Pane Tinted Safety-Glass Windows
Power Vent in Kitchen and Bathroom
Skylight Above Shower
Carefree Travel'R Side Awning
Rear Window in Bedroom*
Slideout Covers
OPTIONS
Screen Door Over Wheel Chair Lift Area on 3811
Bunk Windows

CHASSIS FEATURES

Ford® F-53 Chassis with 7.3Ltr V-8 Engine, 22,000 lb. on 30'-33' Floor Plans
Ford® F-53 Chassis with 7.3Ltr V-8 Engine, 24,000 lb. on 34' Floor Plans
Ford® F-53 Chassis with 7.3Ltr V-8 Engine, 26,000 lb. on 36'-38' Floor Plans
Aluminum Wheels
Cruise Control
Tilt Steering Wheel
Anti-Lock Braking System
Electronic Stability Control

AIR CONDITIONING & HEATING

Two 13.5M Penguin™ Heat Pump A/C, 5.5 Onan Generator, 50 Amp Service and Energy Management System
Dash Heater and Air Conditioner
Propane Gas Furnace with Ducted Heat
OPTIONS
Auxiliary Heater in Rear of Coach

ELECTRICAL FEATURES

5.5 kW Onan® Generator with Remote Switch and Automatic Changeover
10 Watt Solar Panel to Charge Chassis Battery
Two 12 Volt House Batteries
Battery Disconnect Switch for House Battery
12 Volt Auxiliary Receptacle on Dashboard
45 Amp Converter
Daytime Running Lights
Emergency Engine Start Switch
LED Ceiling Lighting
LED Awning Strip Lighting
Manually Operated Hold-To-Run Slideout Switch
Cable TV Connection
USB Outlet at Dash for Driver Use
USB Charger at Passenger Seat Area
Drain Lift Pump with 1200 Inverter*
Lights in Exterior Storage Compartments
Lights in Wardrobe
Wireless Phone Charger for Driver
OPTIONS
1200 Watt Inverter Ran to TV's*
1200 Watt Pure Sine Inverter for Bedbase, Nightstand and Overhead Cabinet Recepts
Power Rewind Reel with 33' Cord*
Solar Prep with Six Gauge Wire Ran from Roof to First Storage Compartment



PLUMBING & BATH FEATURES

Demand Water System
Sewage Holding-Tank Rinse
Water Heater Bypass System
Dometic® 310 China Bowl Stool
ABS Shower Surround with Shower Door
Systems Monitor Panel
Exterior Shower Located on Off Door Side

INTERIOR FEATURES

Padded Vinyl Ceiling Panels
Decorative Wall Art
Mini Blinds in Kitchen and Bathroom Windows
Vinyl Floor in Kitchen, Living Area and Bathroom
Carpeting on all Slideout floors
Interior Assist Handle at Main Entrance Door
Non-Quilted Fitted Bedspread and Accent Pillow
Inlaid Six Panel Design Interior Passenger Doors
Auto Motion Manual Double Roller Shades on Windows Behind Driver/Passenger Area
Auto Motion Power Shade at Windshield and Manual Shades at Driver and Passenger Side Windows
Dash Panel Color Coordinated ABS
Integrated Window Blind System on Entry Door
Shoe Storage Located in Entrance Door Step Compartment
OPTIONS
Vinyl Tile Floor in Place of Vinyl Floor (Minus Bedroom)*
Vinyl Tile Floor in Place of Vinyl Floor (Includes Bedroom)*





CABINETS & FURNITURE

Calypso Glazed Maple Mitered Flat Designer Cabinet Doors-Matte Finish
Concealed Hinges on Cabinet Doors
Drawers Underneath Booth Dinette Seats
Drawers with Full Extension Ball Bearing Guides
Polished Solid Surface Countertop in Kitchen with Undermounted Stainless Steel Sink and Covers
Solid Surface Countertops in Bathroom and Bedroom
Ultralux Sofa and Front Seats
Passenger Seat Work Station
Lifts on Bed Top
Smooth-Top Mattress
Mesh Cell Phone Holder at Each Bunk Bed*
Soft-Close Cabinet Drawers
6-Way Power for Driver Seat
Pull-Out Pantry Shelves*
Williamsburg Sleeper Booth Dinette
Plush Pillow Top Mattress*
Molded Silverware Divider Tray
OPTIONS
Harbour Glazed Maple Mitered Flat Designer Cabinets-Matte Finish
Arctic "B" Glazed Maple Mitered Flat Designer Cabinets-Matte Finish
Drop Down Bunk Bed Over Driver/Passenger Seats with Electric Release Latches and Bunk Ladder
Folding Cockpit Table
Buffet Dinette
Combination Desk with Buffet Dinette Table, Two Fixed/Two Folding Chairs
King Bed*
Euro Booth Dinette with One Table Leaf
Drop Down Bunk Bed Over Driver/Passenger Seats with Electric Release Latches, 32" TV in Front Overhead and Bunk Ladder
Buffet Dinette with Free Standing Table
Combination Desk/Dinette with Free Standing Hidden Leaf Table, Two Fixed and Two Folding Chairs

Lowered (Fixed) Bed Base with Freestyle Glideaway Adj. Bed Mechanism with Air Mattress and Window
Two Ottomans*
Power Adj. Height Bed Base with Free Style Glideaway Bed Mechanism with Air Mattress and Window on 3811
Two Recliners with Reading Lights
Theater Seating 74" (Manual) with Reading Lights
Theater Seating 84" (Manual) with Reading Lights

APPLIANCES & ACCESSORIES

30" Over the Range Stainless Steel Microwave
Convention Microwave Below Cooktop on BSCA 3811
Recessed 3 Burner Range with Oven and Solid Surface Cover
Norcold® 10 Cf. Refrigerator
Raised Panel Refer Door Insert
6 gal. Gas/Electric Water Heater with Electric Ignition
OPTIONS
Norcold® 12 Cf. 4-Door Refrigerator with Icemaker (Removes Pantry)
Icemaker Added to Standard Norcold® Refrigerator
Icemaker Added to Standard Norcold® Refrigerator with Heated Water Line
110 Volt Heat Pads for Holding Tanks
30" Convection Stainless Steel Microwave with Recessed 3-Burner Cooktop
30" Convection Stainless Steel Microwave in Kitchen Overhead with a Drawer Below Cooktop on 3811 Only
Fireplace in Living Area
Prep for Two Piece Washer/Dryer
Splendide® Two Piece Stacked Washer/Dryer
Truma Comfort Plus Continuous Hot Water Heater
Whirlpool® 11Cf. Refer with Dedicated 1200W Pure Sine Inverter, 2 Extra Batteries and Icemaker
Whirlpool® 11Cf. Refer with Dedicated 1200W Pure Sine Inverter and 2 Extra Batteries

AUDIO, VIDEO & ACCESSORIES

Samsung® LED TV in Living and Bedroom Areas (TV Sizes Vary Per Floor Plan)
Bluetooth Microphone for Dash Radio



Dash Radio AM/FM/CD Player with Harman/JBL 180 Watt Sound System
High Definition Component Wiring
Rearview Colored Monitor System with Audio
Side-View Cameras Displayed onto Rear View Monitor Screen
Winegard Digital Crank Up TV Antenna
TV Jack and 110 Volt Recept in Door Side Exterior Storage Compartment
Satellite Dish Prep on Roof
10 Bc Fire Extinguisher, Smoke Detector, Propane and Carbon Monoxide Detector
OPTIONS
Sirius® Radio Capability with Antenna (Does Not Include Monthly Subscription)
WiFi Ranger Denali/Spruce LTE
WiFi Ranger Tenton/Poplar Combo
43" Samsung® TV on Televator with Fireplace in Place of Front Overhead TV on 3811 Only
Bose® Soundbar Sound System
Exterior Entertainment Center in Sidewall-Samsung 32" TV Only
Exterior Entertainment Center in Storage Compartment with Samsung 32" LED TV and AM/FM Radio
Samsung® 32" LED TV in Front Overhead*
Winegard Automatic Dome Satellite Dish-Std/HD, DIRECTV Std. and Bell Canada
Winegard Automatic Open Face Satellite Dish-HD and Bell HD TV
Winegard Automatic Open Face SWM Satellite Dish-DIRECTV Std/HD
Winegard In-Motion Dome Satellite Dish-Std/HD, DIRECTV Std. and Bell Canada
Winegard Rayzar Automatic Digital TV Antenna
Xite Dash Radio, 6.5" Monitor with Nav-N-Go Navigation System.

\*Check with dealership on floor plan availability.

The content in our literature depicts and describes products that are subject to change. For the most recent images and information, please visit NewmarCorp.com.



# The Newmar Customer Experience

The Newmar difference goes beyond our industry-leading motor coaches to provide you with an unrivaled ownership experience.



## QUALITY FROM THE START

Every Newmar is crafted one at a time by folks who have spent an average of eight years building them. And each coach we assemble must undergo more than 1,000 tests and checks before ever leaving our factory.



## FRIENDS FOR LIFE

Meet fellow owners through the Newmar Kountry Klub, a top social club for RV travelers that hosts rallies and other special events throughout the U.S. and Canada.



## CAREFULLY SELECTED DEALERS

We view our dealership network in terms of quality, not quantity. Each of our dealers acts as a partner in our shared mission to exceed your highest of expectations, for an ownership experience that's second to none from day one.



## SEAMLESS SERVICE

When you join the Newmar family, we pair you with a dedicated service specialist with expert knowledge of your exact coach. Available 24/7, our service specialists guarantee dealer warranty authorizations within four business hours and ship all in-stock parts the same day, free of charge.



## EVERYTHING IN ONE PLACE

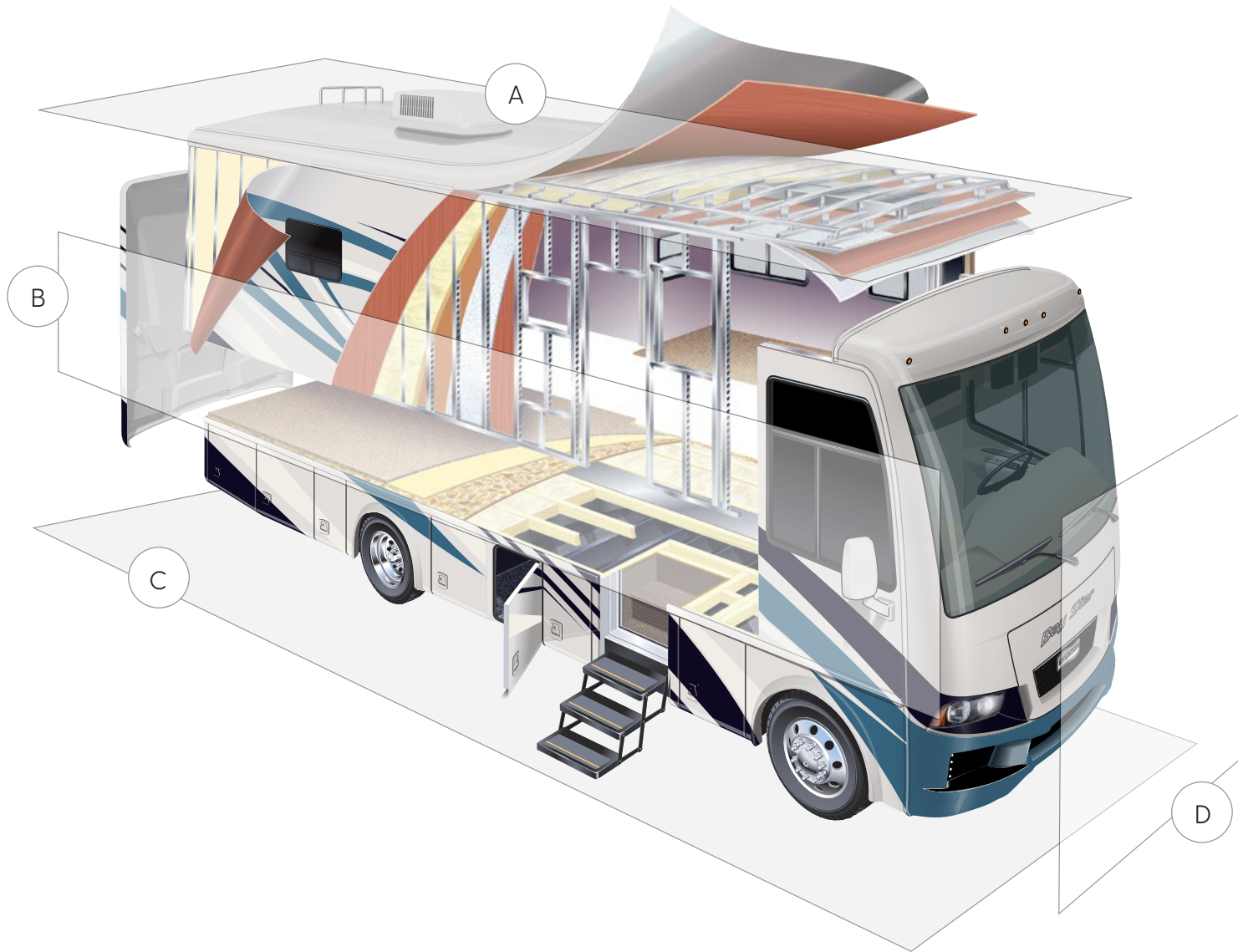
As a Newmar owner, you'll find resources specific to your coach through Newgle, an easy-to-use knowledge base that houses everything from user guides to technical support documents.



## ROCK-SOLID PROTECTION

All models include a one-year/unlimited mileage limited warranty and a five-year, non-transferable structural warranty that covers your coach's superstructure in the event it fails to perform. Ask your Newmar dealer for more details.





## A. ROOF

BriteTEK™ Roof with Walkable Decking

Batten Insulation

A/C Ducting

16" on Center Aluminum Rafter Framing

Kraft Paper Vapor Barrier

5/8" Bead Foam

3/16" Panel

Padded Vinyl Overlay

## B. SIDEWALL

Interior Wall Panel

5/8" Bead Foam

Kraft Paper Vapor Barrier

Batten Insulation

Composite One-Piece Gelcoat Exterior Wall

Aluminum Framing

## C. FLOOR

Carpet/Tile

Carpet Padding

5/8" Floor Decking

Batten Insulation

16" on Center Wood Framing

Polyethylene Moisture Barrier

## D. EXTERIOR

(2) 13.5M Penguin™ Central Air Conditioners with Heat Pump

One-Piece Bonded Windshield

Frameless, Double-Pane, Tinted Safety Glass Windows

Side-Hinged Baggage Doors



# Our Partners

Newmar Quality Begins with the Company We Keep

You deserve class-leading performance from names you can trust. That's why we only work with suppliers dedicated to providing our customers with unrivaled quality, comfort, and support.

## **BASF**

We create chemistry

The Coatings division of BASF is a global expert in the development and production of innovative and sustainable OEM and refinish coatings that deliver solutions beyond your imagination.



## **INDUSTRIAL FINISHES**

Industrial Finishes has supported RV manufacturers for over four decades. The Industrial Finishes paint process delivers uncompromising quality, providing your coach with a true "Masterpiece" finish.



Driven By You

## **FREIGHTLINER CUSTOM CHASSIS**

Freightliner Custom Chassis Corp. (FCCC) is renowned for delivering the industry's best ownership experience through exceptional 24/7 factory-direct support, exceptional ride and handling, and developing high-performance innovations such as DRIVETECH. It's the only RV driving system that prioritizes safety and automotive luxury by putting every command at your fingertips.



## **RIVERPARK**

At RiverPark, we proudly represent the leading brands in consumer electronics—brands you know and trust to provide exceptional quality and innovative technology. Newmar features Samsung's incredible 4K TVs, Xite Infotainment systems featuring Rand McNally Navigation, Bose soundbars, and JBL and Infinity premium audio. Step into a 2022 Newmar and experience dazzling audio and video performance throughout the coach.



## **SPARTAN MOTORS**

Spartan Motors is an American company with over 30 years of experience designing and manufacturing the premier motorhome chassis, which provides superior performance, exceptional safety ratings, and industry-leading technology.





**When You Know the Difference.**

Newmar Corporation | 355 N Delaware St | PO Box 30 | Nappanee, IN 46550-0030 | 574-773-7791 | Fax 574-773-2895

[NewmarCorp.com](http://NewmarCorp.com)