

2004 KOUNTRY STAR  
FIFTH WHEEL BY NEWMAR



# 2004 KOUNTRY STAR

FIFTH WHEEL BY NEWMAR

DESTINATION:

*Lake Superior Getaway*

NEWMARCORP.COM

*The lighthouse on that jagged cliff was stunning!*



Most would agree, there are few things more exhilarating or illuminating than travel. Especially when you can see—in person—places you had only seen in your mind's eye. No wonder so many people travel with a Kountry Star Fifth Wheel in tow. It has a way of lighting up any destination...with warm, open, inviting interiors...a huge pass-through storage area that lets you pack as if you were never coming back...and solid, dependable Newmar construction that frees your mind and lets you live large. Catch the glow of a Kountry Star Fifth Wheel today.







32RLKS/Summer Straw



B

32RLKS/Summer Straw

- A. Plentiful cabinets and a thoughtful layout enhance kitchen convenience.
- B. Stand tall: Our new raised roof eliminates the need for steps and increases ceiling height to 6'6".
- C. Much countertop and cabinet space is gained with this unique and visually appealing layout.
- D. The Kountry Star bathroom's amenities feature an optional one-piece-fiberglass shower surround that is easy to clean.



C

35LKSA/Rainforest Green



D

35LKSA/Rainforest Green



AUGUST 25 ~

*The road we took wound around the lake's rocky shore, past deep woods, cascading streams and more of the lighthouses we love.*







32RLKS/Summer Straw



B

35LKSA/Rainforest Green

- A. The optional crisp window lambrequins add a touch of sophistication to the living room.
- B. Flexsteel® swivel recliners create a cozy, comfortable conversation area.
- C. Pack everything you want: The unobstructed pass-through bay provides maximum storage space without sacrificing frame strength.
- D. An exceptionally smooth ride is provided by standard shock absorbers on your Kountry Star Fifth Wheel.



C



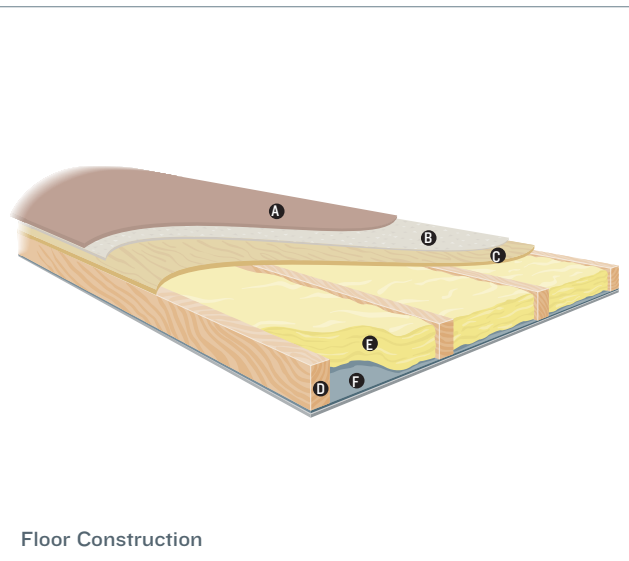
D

# NEWMAR'S FREEDOM WARRANTY™

Your Kountry Star Fifth Wheel is built to take you as far as your road rolls on...for as long as you roll on with it. Because there's more than enough solid engineering here to ensure years of travel pleasure.

Kountry Star is assembled on the same production line, to the same exacting standards and with the same meticulous care, as all Newmar coaches. It also embodies Newmar's long history of product innovation and industry "firsts." For us, it's a matter of pride. And tradition. Of taking personal responsibility and building a product that each of us, ourselves, would want to own.

As proof of our commitment, we back every RV we make with a three-year, bumper-to-bumper limited warranty: The Newmar Freedom Warranty. Ask your dealer for details. You're sure to find coverage this comprehensive a truly liberating experience.

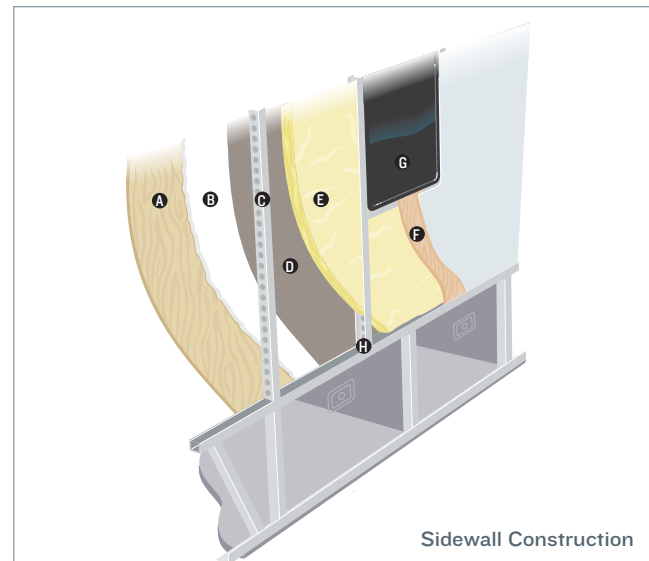


Floor Construction

- A. Plush carpet\*
- B. Carpet padding
- C. 5/8" floor decking

- D. 2" x 3" wood stringer
- E. Fiberglass batten insulation
- F. Polyethylene moisture barrier

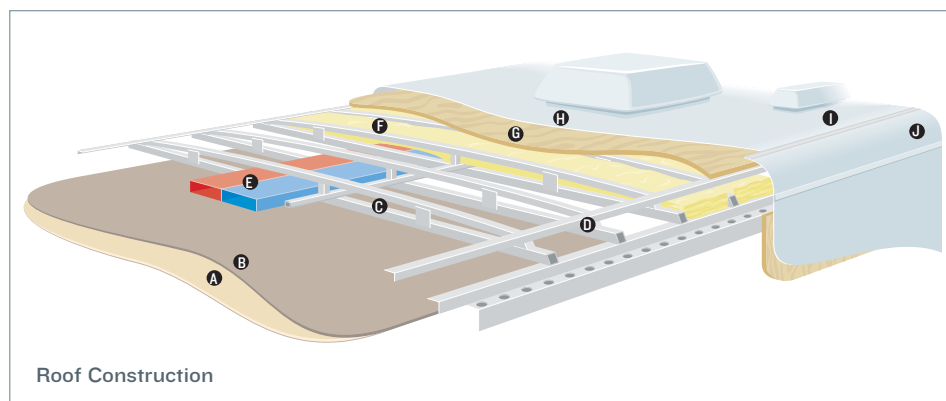
\*Ceramic tile, simulated floor and simulated tile options also available.



Sidewall Construction

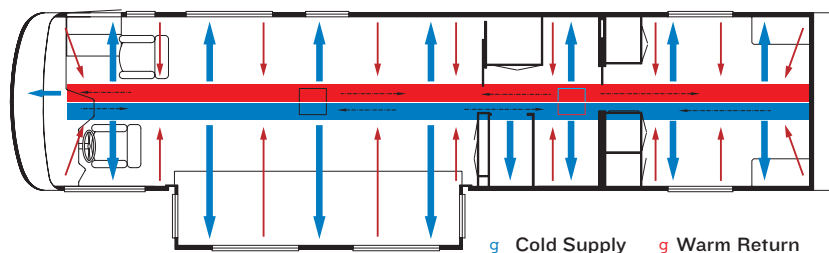
- A. Plywood interior wall board
- B. 5/8" bead foam
- C. 1.5" C-channel aluminum studs with punched holes
- D. Kraft paper vapor barrier
- E. Fiberglass insulation

- F. Composite one-piece gel coat exterior sidewall
- G. Framed windows
- H. Aluminum sidewall structure with 16" on-center framing



Roof Construction

- A. Vinyl overlay
- B. 3/16" panel
- C. 1" tubular aluminum truss rafter with full joint weld
- D. Welded aluminum crowned roof structure with 16" on-center framing
- E. True Central Air Conditioning—insulated ducted distribution and return
- F. Fiberglass batten insulation
- G. 7mm wood decking (optional)
- H. Aluminum or optional Brite-Tek roof
- I. One-piece fiberglass caps
- J. Aluminum wrap



g Cold Supply g Warm Return

**TRUE CENTRAL AIR:** Newmar's True Central Air System—standard with every Newmar RV—is just like those found in most site-built homes. It's actually two separate, fully ducted systems: one to distribute incoming cool air, the other to quickly and effectively remove warm air from every living area.





A



B



C



D

## INTERIOR COLORS

- A. Summer Straw
- B. Riviera Blue

- C. Rainforest Green
- D. Heathered Plum

## EXTERIOR COLORS

- A. Summer Straw
- B. Riviera Blue

- C. Rainforest Green



A



B



C

**NEWMARCORP.COM**

Here you'll discover the latest model specifications, floor plans and options, as well as information on who we are, how we work and what we believe in.



*Wonder where our next road will lead?*

## THE NEWMAR KOUNTRY KLUB

As a Newmar owner, you qualify for membership in the Newmar Kountry Klub. Join your local chapter, and just look at the perks you'll enjoy: friendship, fun and adventure with other Newmar owners • rallies and caravans • special RV show events • discounts on RV services • a free monthly Klub magazine • Klub merchandise. And that's just for starters.

Join today! Call 877-639-5582, toll-free, or visit the Klub section of [newmarcorp.com](http://newmarcorp.com).

## THE NEWMAR FACTORY TOUR

We'd love to have you visit our state-of-the-art production facility in Nappanee, Indiana. For details, including tour days and times, please call 574-773-7791.

NEWMAR CORPORATION  
355 N DELAWARE ST  
PO BOX 30  
NAPPANEE IN 46550-0030  
574-773-7791 Fax 574-773-2895  
[www.newmarcorp.com](http://www.newmarcorp.com)

Official Newmar Dealer:



NEWMAR QUALITY: A WAY OF LIFE

Some features shown in our literature are optional. Colors and finishes are photographic representations: The actual materials may look different. Prices, specifications and floor plans are subject to change at Newmar's discretion without prior written notice or obligation. Please see your dealer for actual samples and specifications. © 2003 Newmar Corporation. Printed in the U.S.A. (05/03)



2004 KOUNTRY STAR  
FIFTH WHEEL BY NEWMAR



# 2004 KOUNTRY STAR

FIFTH WHEEL BY NEWMAR

DESTINATION:

*Lake Superior Getaway*



NEWMARCORP.COM

# SPECIFICATIONS

## STANDARD FEATURES

### TOWABLE CHASSIS FEATURES

- Shock Absorbers

### AIR CONDITIONING & HEATING

- Two 30 Ib. LP-Gas Bottles with Automatic Regulator
- I3,500-Btu Brisk® Central Air Conditioner
- LP Leak Detector

### APPLIANCES & ACCESSORIES

- Six-Gal. Gas/Electric Water Heater with Direct-Spark Ignition
- 22" Microwave
- Three-Burner Range with Glass Oven Door and Piezzo Ignition
- AM/FM Radio with Cassette and CD Player
- Range Hood with Light and Fan
- Dometic® 2852 Refrigerator (8 Cu. Ft.)
- Telephone Connection with One Phone Jack
- TV Antenna with Power Booster and Two Interior Jacks
- Color TV in Entertainment Center
- Cable TV Connection with RG 6 Coax

### CABINETS & FURNITURE

- Oak Hardwood Raised-Panel Doors on Overhead Cabinets and Flat-Panel Doors on Base Cabinets
- Flexsteel® Sofa
- Flexsteel® Recliner
- Lifts on Bed to Access Storage Area
- Queen Bed—60" X 75"
- Corian® Countertop in Kitchen with Acrylic Sink
- Dinette Table with Four Chairs
- Laminate Countertop in Bathroom with Porcelain Bowl

### ELECTRICAL FEATURES

- 55-amp Converter
- I2 V Battery
- 30-amp Electrical Service

### EXTERIOR FEATURES

- Filon® Fiberglass Exterior Sides
- Gel-Coated Fiberglass End Caps
- Seamless Aluminum Roof
- Power Front Jacks
- Rear Skid Bars with Bike Rack Capability
- Stabilizer Jacks, One Pair
- Snaps for Fifth Wheel Jacks

## INTERIOR FEATURES

- Day/Night Pleated Window Shades with Lined Drapes and Valances
- Quilted Bedspread with Reverse Sham and Accent Pillows
- Carpeting in Living Room and Bedroom Areas
- Vinyl Floor in Kitchen, Foyer and Bathroom Areas
- Hardwood/Fabric Fascia on Living Area Slideout
- Vinyl-Covered Ceiling Panels

## PLUMBING & BATH FEATURES

- Monitor Panel
- Thetford® Aqua Magic IV Stool
- Tub/Shower Surround with Shower Door
- Water-Heater Bypass System
- Demand Water System with Shurflo Pump
- Sewage Holding-Tank Rinse
- Sewage Hose Holder, Easy Access Flip-Down Tray

## CONSTRUCTION FEATURES

- Aluminum-Frame Sidewalls and Roof Construction, I6" On Center
- Roof R-Value Rating: I2
- Sidewall R-Value Rating: II
- Floor R-Value Rating: II
- Enclosed Underbelly with Fiberglass Insulation
- R7 Fiberglass Insulation in Sidewalls and Floor, RII in Roof

## WINDOWS, AWNINGS & VENTS

- Power Vent in Bathroom with Wall Switch
- Triple Entrance-Door Step

## OPTIONAL FEATURES

### TOWABLE CHASSIS FEATURES

- Easy Lube Equalizers
- Electric Over Hydraulic Disc Brakes (IO Ib.)
- Spare Tire Mounted in Underbelly Lift Kit

### AIR CONDITIONING & HEATING

- I3,500-Btu Penguin® Air Conditioner in Lieu of Standard (5 Ib.)
- I5,000-Btu Penguin Air Conditioner in Lieu of Standard (5 Ib.)
- I5,000-Btu Brisk Air Conditioner in Lieu of Standard (5 Ib.)
- Extra I3,500-Btu Brisk Air Conditioner (95 Ib.)
- Extra I5,000-Btu Brisk Air Conditioner (IOO Ib.)

## APPLIANCES & ACCESSORIES

- Two-Piece Washer/Dryer with 50-amp Electrical Service (24I Ib.)
- Dometic® 3862 Refrigerator (8 Cu. Ft., 5 Ib.)
- Ten-Gal. Gas/Electric Water Heater with Direct-Spark Ignition (IO Ib.)
- Theater System with DVD Player in Lieu of Standard (I5 Ib.)

## CABINETS & FURNITURE

- Maple Cream Cabinets
- Arnold Cherry Cabinets
- Adjustable Pullout Pantry Shelves (5 Ib.)
- Built-In Booth Dinette (23 Ib.)
- Combination Desk/Dinette Table (50 Ib.)

## ELECTRICAL FEATURES

- Battery Disconnect Switch
- 400-watt Inverter for Entertainment Center (IO Ib.)
- 50-amp Electrical Service (9 Ib.)
- Exterior Security Lights (2 Ib.)
- Generator Prep with Carbon Monoxide Detector (345 Ib.)
- 5.5 Onan® Generator with Auto Changeover and Battery (345 Ib.)

## EXTERIOR FEATURES

- BriteTek® Roof with 7mm Decking (237 Ib.)
- Gel-Coated Fiberglass Exterior Sides
- Extra Stabilizer Jacks, One Pair (40 Ib.)
- Rear Ladder (4 Ib.)

## INTERIOR FEATURES

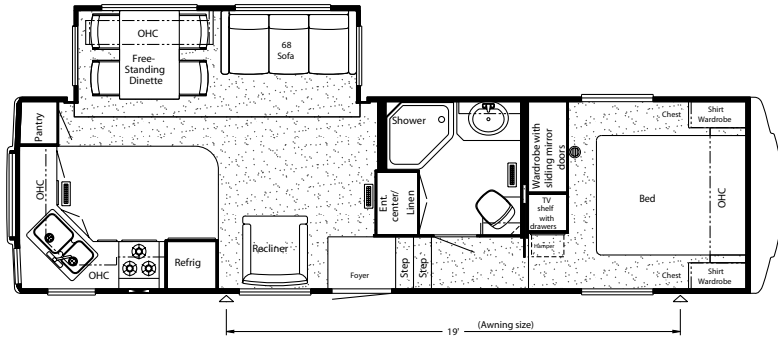
- Simulated Plank Floor in Kitchen and Foyer Areas (30 Ib.)
- I2" Marble-Look Floor Tile in Kitchen and Master Bathroom Areas (20 Ib.)
- Lambrequin Window Treatment (20 Ib.)
- Woven Soft Touch Ceiling (30 Ib.)

## WINDOWS, AWNINGS & VENTS

- Fan-Tastic® Vent with Rain Sensor in Kitchen Area (II Ib.)
- Double-Pane Tinted Safety-Glass Windows (IIO Ib.)
- Skylight in Master Bathroom (2 Ib.)
- Carefree® Fiesta Side Awning (IO4 Ib.)

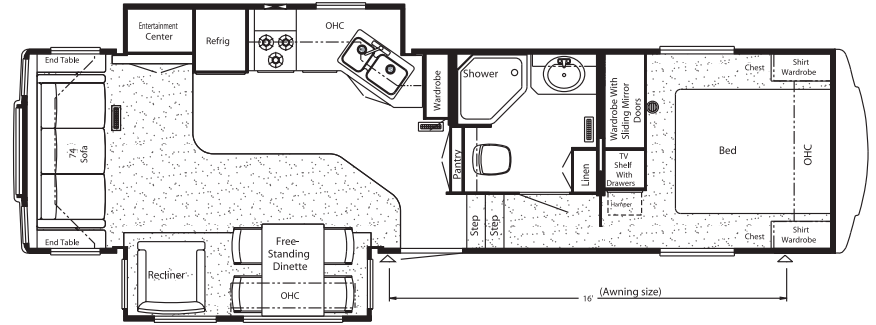


# FLOOR PLANS



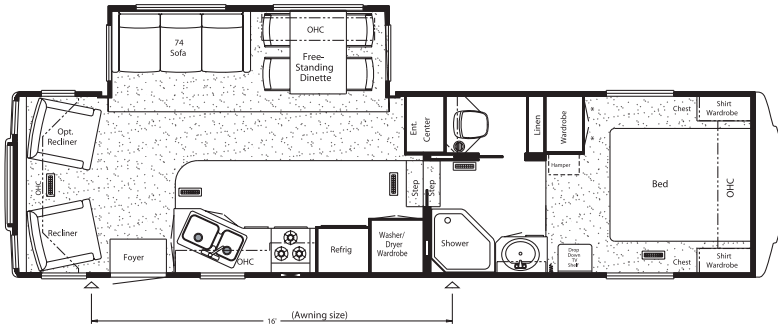
Model Shown: KSF 30RKCL

Floor Plan Options: K080, K921, M725



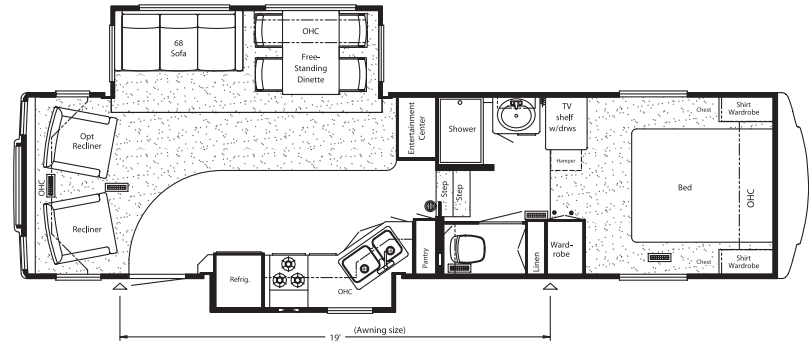
Model Shown: KSF 32RLKS

Floor Plan Options: K080, K921, M724



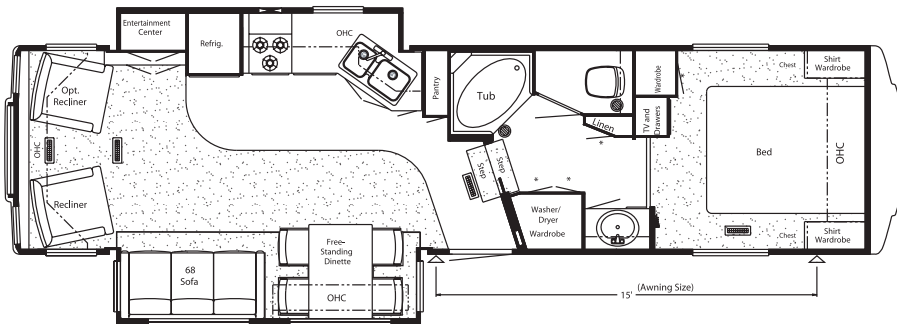
Model Shown: KSF 32RLRE

Floor Plan Options: K080, K923, M304, M305



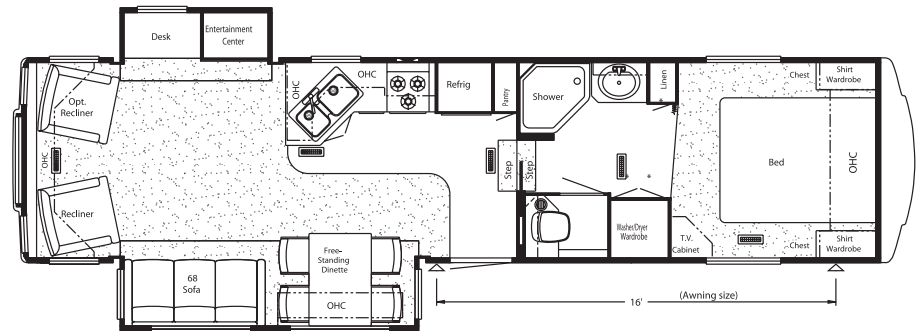
Model Shown: KSF 33KSBL

Floor Plan Options: K080, K870, M090, M120



Model Shown: KSF 33KSFB

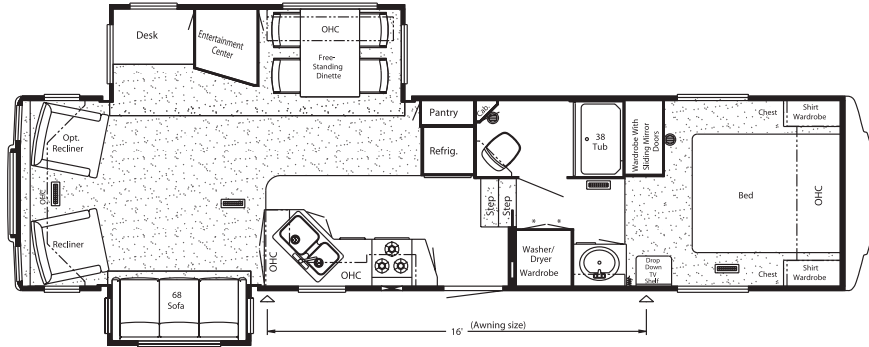
Floor Plan Options: K080, M640, M660



Model Shown: KSF 34BLSK

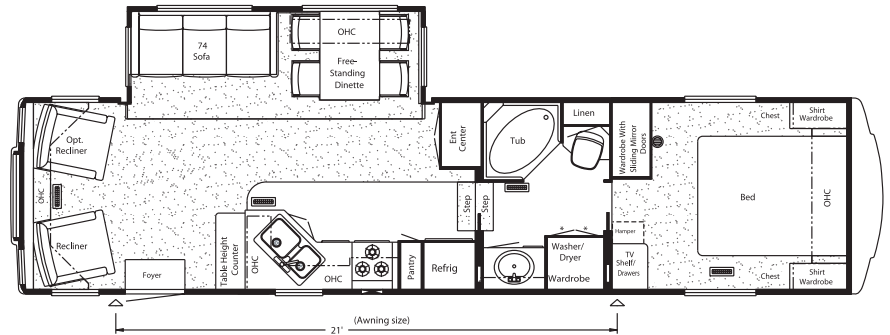
Floor Plan Options: K080, M180, M182

# FLOOR PLANS



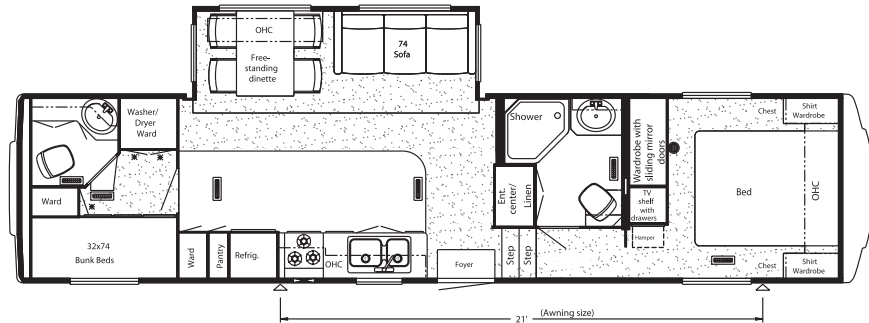
Model Shown: KSF 34BLWB

Floor Plan Options: K080, K923, M304, M305



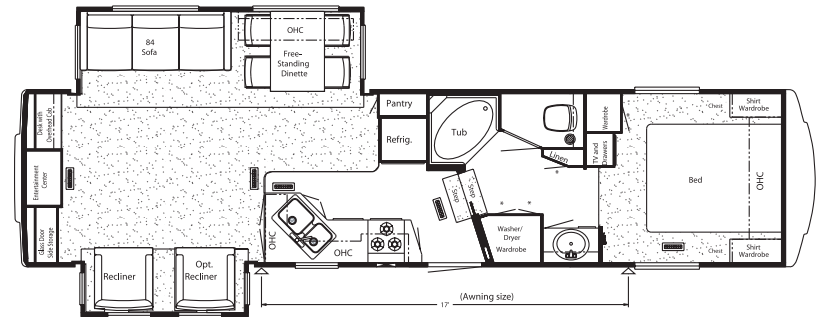
Model Shown: KSF 34RLCK

Floor Plan Options: K080, K920, M712, M713, P182



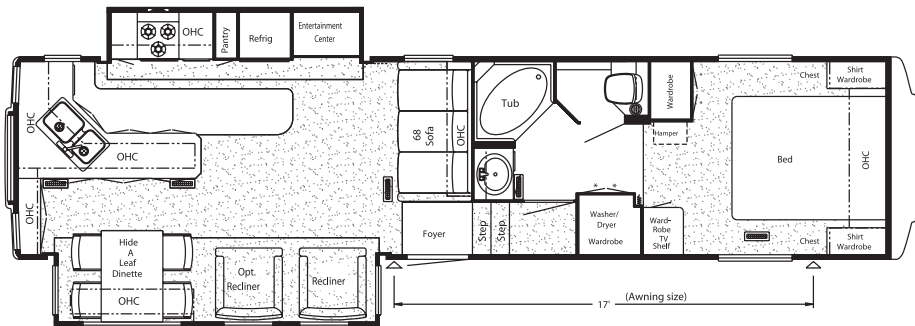
Model Shown: KSF 35DBSA

Floor Plan Options: K080, K130, K550, K921, M714



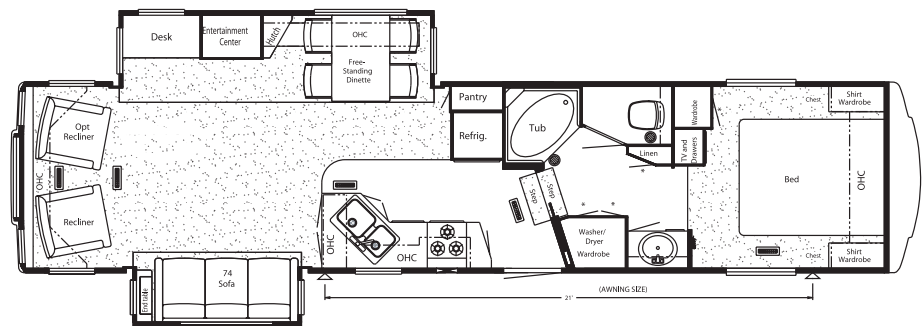
Model Shown: KSF 35DSSK

Floor Plan Options: K080, M722, M302



Model Shown: KSF 35LKSA

Floor Plan Options: K080, K922, M651, M781

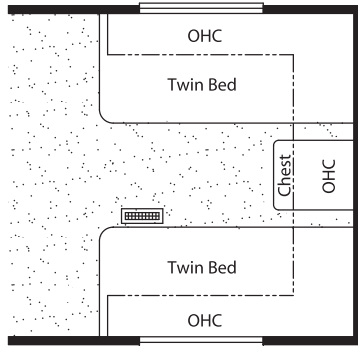


Model Shown: KSF 37RLFB

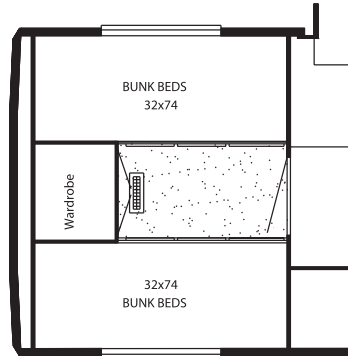
Floor Plan Options: K080, M640, M660



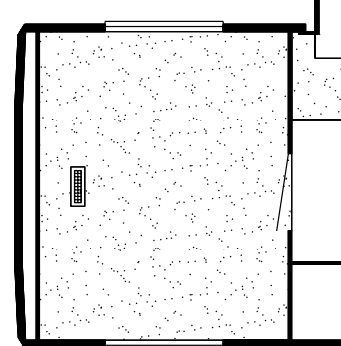
# FLOOR PLAN OPTIONS



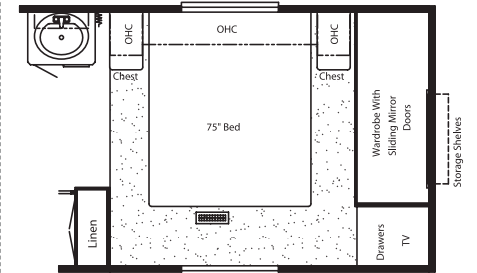
**K080:** Twin Beds 30RKCL, 32RLKS, 32RLRE, 33KSBL, 33KSFB, 34BLSK, 34BLWB, 34RLCK, 35DBSA, 35DSSK, 35LKSA, 37RLFb



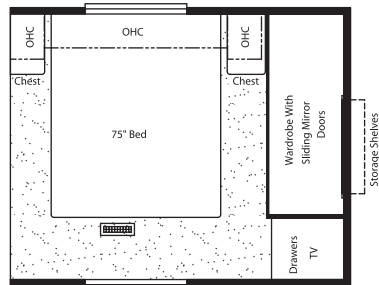
**K130:** BUNKHOUSE BEDROOM 35DBSA



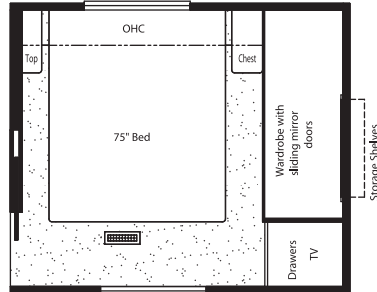
**K550:** DELETE COMPLETE REAR BEDROOM AND BATH 35DBSA



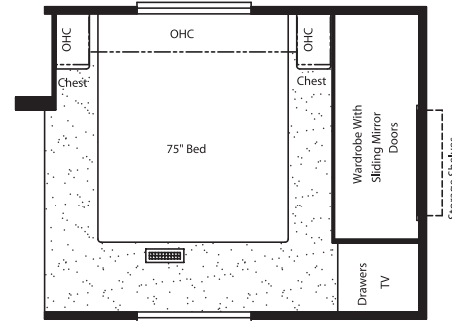
**K870:** HONEYMOON SUITE 33KSBL



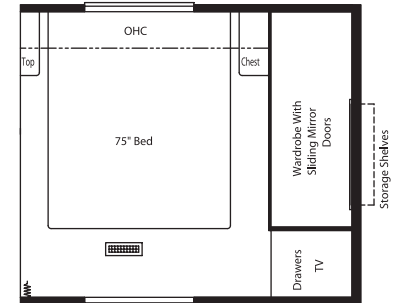
**K920:** HONEYMOON SUITE 34RLCK



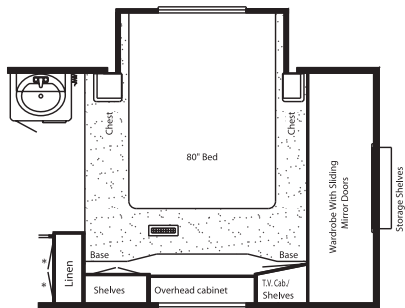
**K921:** HONEYMOON SUITE 30RKCL, 32RLKS, 35DBSA



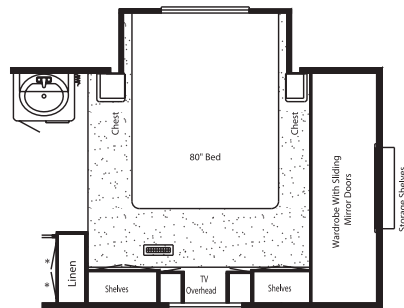
**K922:** HONEYMOON SUITE 35LKSA



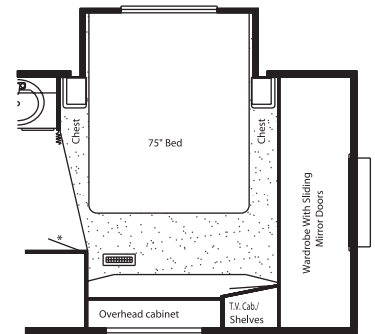
**K923:** HONEYMOON SUITE 32RLRE, 34BLWB



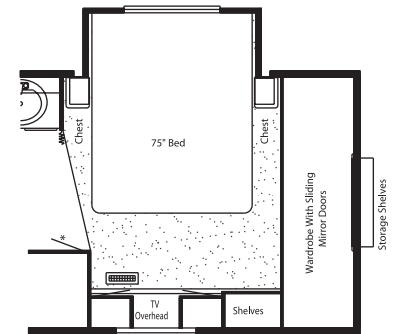
**M090:** CABOVER SLIDEOUT WITH VANITY CENTER 33KSBL



**M120:** CABOVER SLIDEOUT WITH VANITY/DRESSER CENTER 33KSBL

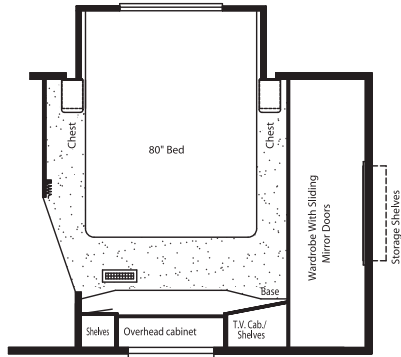


**M180:** CABOVER SLIDEOUT WITH VANITY CENTER 34BLSK

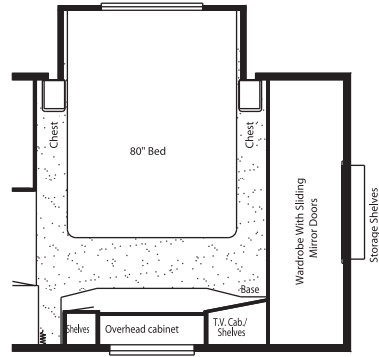


**M182:** CABOVER SLIDEOUT WITH VANITY/DRESSER CENTER 34BLSK

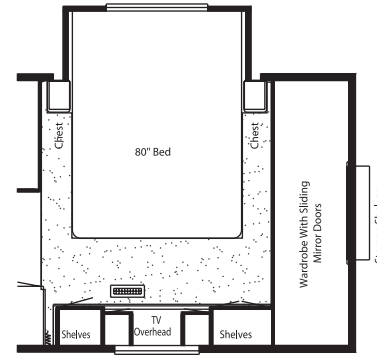
# FLOOR PLAN OPTIONS



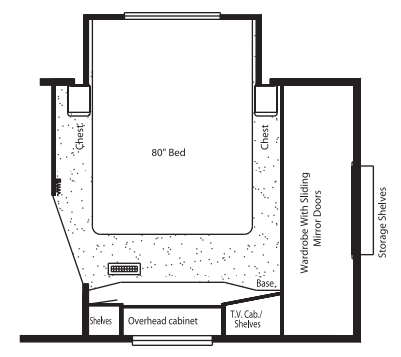
**M302: CABOVER SLIDEOUT WITH VANITY CENTER 35DSSK**



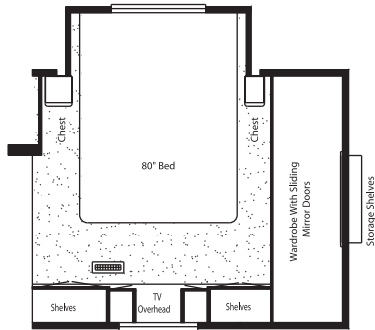
**M304: CABOVER SLIDEOUT WITH VANITY CENTER 32RLRE, 34BLWB**



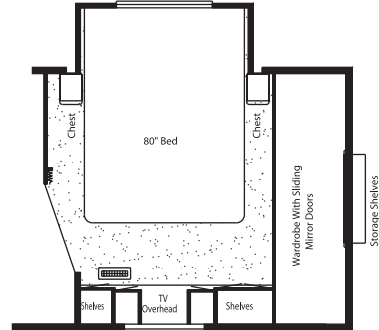
**M305: CABOVER SLIDEOUT WITH VANITY/DRESSER CENTER 32RLRE, 34BLWB**



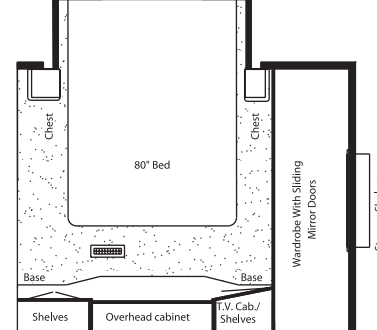
**M640: CABOVER SLIDEOUT WITH VANITY CENTER 33KSFB, 37RLFb**



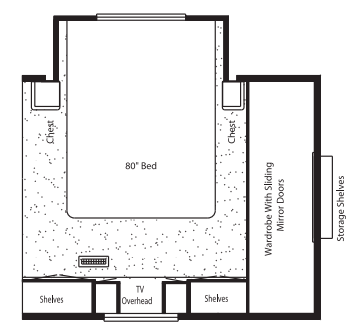
**M651: CABOVER SLIDEOUT WITH VANITY/DRESSER CENTER 35LKSA**



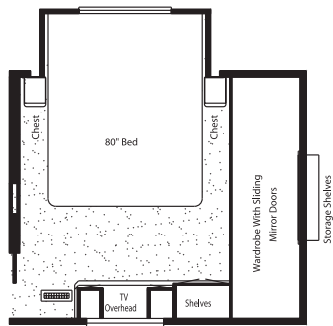
**M660: CABOVER SLIDEOUT WITH VANITY DRESSER CENTER: 33KSFB, 37RLFb**



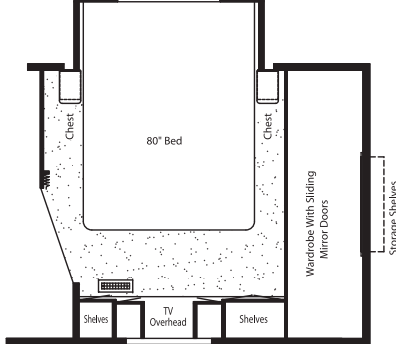
**M712: CABOVER SLIDEOUT WITH VANITY CENTER 34RLCK**



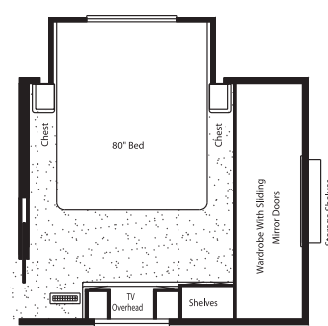
**M713: CABOVER SLIDEOUT WITH VANITY OVER DRESSER CENTER 34RLCK**



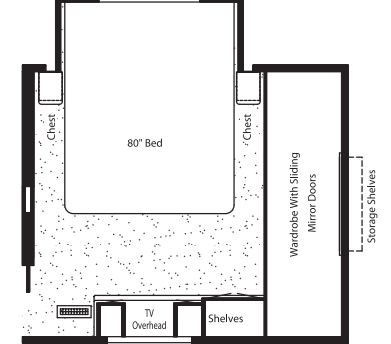
**M714: CABOVER SLIDEOUT WITH VANITY OVER DRESSER CENTER 35DBSA**



**M722: CABOVER SLIDEOUT WITH VANITY/DRESSER CENTER: 35DSSK**



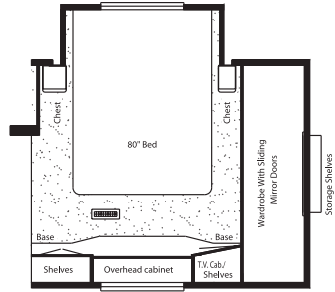
**M724: CABOVER SLIDEOUT WITH VANITY/DRESSER CENTER 32RLKS**



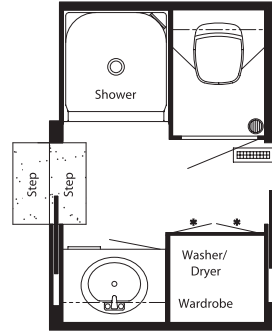
**M725: CABOVER SLIDEOUT WITH VANITY/DRESSER CENTER: 30RKCL**



# FLOOR PLAN OPTIONS



**M781: CABOVER SLIDEOUT WITH VANITY CENTER  
35LKSA**



**P182: ENCLOSED STOOL WITH SHOWER  
34RLCK**

# FLOOR PLAN SPECIFICATIONS

FLOOR PLAN	TIRE SIZE	GAWR	GVWR	APP. LENGTH	APP. HEIGHT	WIDTH	APP. DRY WEIGHT	APP. HITCH WEIGHT	FRESH WATER	GREY	SEWAGE CAP.	APP. HITCH HEIGHT	HEAT CAP.
KSFW 30RKCL	225/75R15-D	5,080 lb.	11,900 lb.	32' 5"	13'	100"	10,006 lb.	2,001 lb.	75 gal.	82 gal.	40 gal.	46"	35,000 Btu
KSFW 32RLKS	235/85R16-E	6,000 lb.	14,000 lb.	34' 4"	13' 1"	100"	10,905 lb.	2,181 lb.	75 gal.	82 gal.	40 gal.	47"	35,000 Btu
KSFW 32RLRE	235/85R16-E	6,000 lb.	14,000 lb.	34' 7"	13' 1"	100"	10,105 lb.	1,718 lb.	75 gal.	82 gal.	40 gal.	47"	35,000 Btu
KSFW 33KSBL	235/85R16-E	6,000 lb.	14,000 lb.	35'	13' 1"	100"	11,309 lb.	1,809 lb.	75 gal.	82 gal.	40 gal.	47"	35,000 Btu
KSFW 33KSFB	235/85R16-E	6,000 lb.	14,000 lb.	35' 6"	13' 1"	100"	11,226 lb.	2,021 lb.	75 gal.	82 gal.	40 gal.	47"	35,000 Btu
KSFW 34BLSK	235/85R16-E	6,000 lb.	14,000 lb.	36' 1"	13' 1"	100"	11,021 lb.	2,094 lb.	75 gal.	82 gal.	40 gal.	47"	35,000 Btu
KSFW 34BLWB	235/85R16-E	6,000 lb.	14,000 lb.	36' 7"	13' 1"	100"	11,583 lb.	1,853 lb.	75 gal.	82 gal.	40 gal.	47"	42,000 Btu
KSFW 34RLCK	235/85R16-E	6,000 lb.	14,000 lb.	36' 6"	13' 1"	100"	10,802 lb.	1,728 lb.	75 gal.	82 gal.	40 gal.	47"	35,000 Btu
KSFW 35DBSA	235/85R16-E	6,000 lb.	14,000 lb.	37' 7"	13' 1"	100"	11,061 lb.	1,880 lb.	75 gal.	82 gal.	80 gal.	47"	35,000 Btu
KSFW 35DSSK	235/85R16-E	6,000 lb.	14,000 lb.	37'	13' 1"	100"	11,506 lb.	1,956 lb.	75 gal.	82 gal.	40 gal.	47"	55,000 Btu
KSFW 35LKSA	235/85R16-E	6,000 lb.	14,000 lb.	37' 2"	13' 1"	100"	11,928 lb.	2,028 lb.	75 gal.	82 gal.	40 gal.	47"	42,000 Btu
KSFW 37RLFB	235/85R16-G	7,000 lb.	16,250 lb.	39'	13' 1"	100"	12,050 lb.	1,928 lb.	75 gal.	82 gal.	40 gal.	47"	55,000 Btu

*Wonder where our next road will lead?*

## THE NEWMAR KOUNTRY KLUB

As a Newmar owner, you qualify for membership in the Newmar Kountry Klub. Join your local chapter, and just look at the perks you'll enjoy: friendship, fun and adventure with other Newmar owners • rallies and caravans • special RV show events • discounts on RV services • a free monthly Klub magazine • Klub merchandise. And that's just for starters.

Join today! Call 877-639-5582, toll-free, or visit the Klub section of [newmarcorp.com](http://newmarcorp.com).

## THE NEWMAR FACTORY TOUR

We'd love to have you visit our state-of-the-art production facility in Nappanee, Indiana. For details, including tour days and times, please call 574-773-7791.

NEWMAR CORPORATION  
355 N DELAWARE ST  
PO BOX 30  
NAPPANEE IN 46550-0030  
574-773-7791 Fax 574-773-2895  
[www.newmarcorp.com](http://www.newmarcorp.com)

Official Newmar Dealer:



NEWMAR QUALITY: A WAY OF LIFE

Some features shown in our literature are optional. Colors and finishes are photographic representations: The actual materials may look different. Prices, specifications and floor plans are subject to change at Newmar's discretion without prior written notice or obligation. Please see your dealer for actual samples and specifications. © 2003 Newmar Corporation. Printed in the U.S.A. (05/03)