



*the*  
**DIFFERENCE**

NEW MAR CORPORATION

*Better Together*

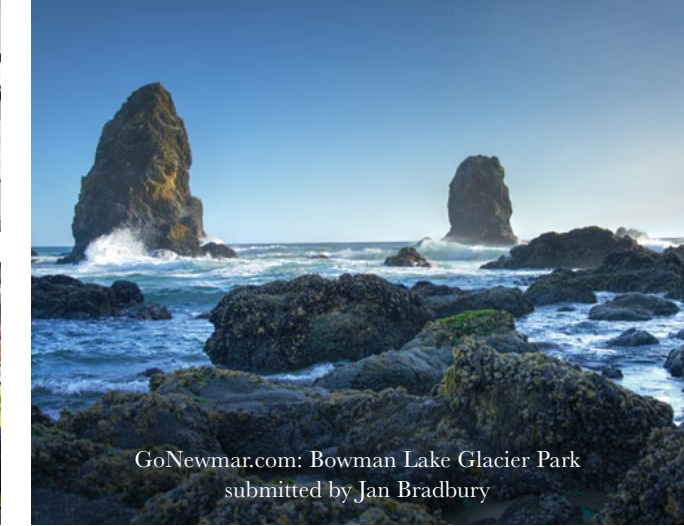
VENTA



*explore*  
THE DIFFERENCE







# TABLE OF *contents*

## CREATING THE DIFFERENCE

- 02 The Newmar Factory Tour Experience
- 04 How We Build Quality Into Each and Every Newmar Coach
- 06 From Nappanee to NYC with Newmar Designer Kim Moore

## LIVING THE LIFESTYLE

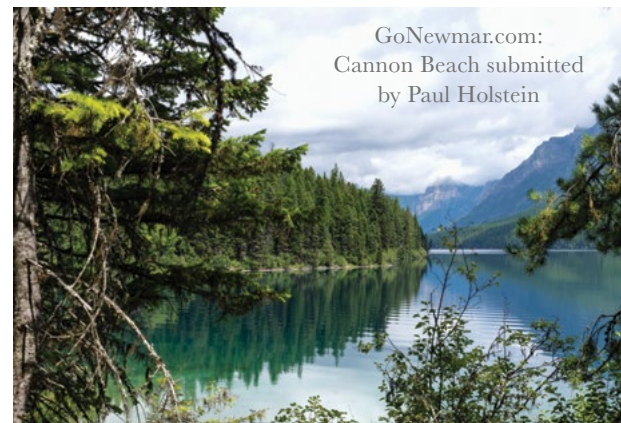
- 08 10 RV-Friendly Fall Travel Destinations
- 14 Not Your Typical RV Family
- 16 Delicious & Nutritious – 5 Healthy and Tasty Recipes
- 24 Five Ways RV'ing Beats Flying
- 26 Four-legged Road Warriors
- 27 Rave Reviews from Newmar Customers

## VISITING THE SHOWROOM

- 28 Freightliner Chassis – Crafting the Ultimate RV Experience
- 30 Luxury Has a New Look – Meet the New 2017 King Aire
- 32 The Newmar Customer Experience
- 34 Sony – Superior Technology
- 36 Eleven Ways a Newmar Diesel Pusher is Different
- 38 Home is Where You Take It – The 2017 Newmar Mobility Lineup
- 40 Spartan Chassis – Leading the Way in Safety Innovation

## THE 2017 LINEUP

- 44 Bay Star Sport | Bay Star
- 46 Canyon Star | Ventana LE
- 48 Ventana | Dutch Star
- 50 Mountain Aire | London Aire
- 52 Essex | King Aire



**WEBSITE** [newmarcorp.com](http://newmarcorp.com)  
**PHONE** 1-800-731-8300

Our mission is to honor God in all business activities; to deliver our customers with the best in product and service; to be a conscientious and fair employer; to provide a fair profit through a healthy partnership with our dealers. As a company, we guide our everyday actions using the Christian principles of: Courtesy, Fairness, Honesty, Integrity, Morality, Reasonableness, and Reliability.

Copyright© 2016 Newmar Corporation. All rights reserved.





GoNewmar.com: Chama, New Mexico submitted by Jim and Cynthia Shute

## PRESIDENT'S LETTER

# *a team* EFFORT

Greetings from Newmar headquarters in Nappanee, Indiana!

At Newmar, our goal is not to be the *biggest*, but the *best*, which begins and ends with our people. The artisans, sales professionals, engineers, quality control experts and more who have been with Newmar for an average of 13 years.

Here are just a few examples of the innovations our employees have developed for our 2017 lineup. **The King Aire has been fully reimagined for 2017**, starting with an all-new exterior and ultra-modern cockpit. Our Customer Quality Inspection process is now **twice as thorough**, allowing us to maintain superior quality. Forty percent of the nearly 50 unique floor plans available across our 2017 lineup are all new. **Both a Freightliner and Spartan chassis are available** on Dutch Star, Mountain Aire, London Aire and Essex at zero cost difference. And with its debut on the new King Aire, the Newmar-engineered **STAR Foundation is now a part of every 2017 Newmar diesel and luxury product.**

As we approach 50 years as a company, our coaches will continue to evolve. But one thing that will never change is our commitment to crafting excellence, one coach at a time, with help from the best people our industry has to offer.



**MATT MILLER**  
*Newmar President*  
*Lifelong Motor Coach Enthusiast*



# THE NEWMAR FACTORY TOUR EXPERIENCE

AN INTERVIEW WITH TOUR GUIDE ROXIE RICE



At Newmar, we never forget that your RV is much more than a vehicle – it's your home. Our manufacturing process is executed by individuals with over a dozen years of experience with us. And our industry-leading quality is direct result of their shared dedication.

To allow you to witness the Newmar difference firsthand, we created the Factory Tour experience, which offers guided tours of our main assembly building all year long (including twice a day from April through October). To bring you more on the Tour, we spoke with veteran tour guide Roxie Rice.

#### **How long have you been a Newmar tour guide?**

I've been with Newmar for six and a half years, and have been in the RV industry for over 25. I started guiding tours six months after I started with Newmar, and am constantly learning new things about our products so that I can better educate the people who visit us.

#### **Speaking of learning, what has being a tour guide taught you over the years?**

The secret to being an effective tour guide is knowing just the right amount of information to provide. I try not to overwhelm our guests. And I always encourage people to ask questions. If I don't have an answer, I will find someone that does.

#### **Can a customer come and watch their Newmar being assembled?**

If a customer has a coach on the assembly line, they can come and go on the Tour every day – up to twice a day – and take pictures of their unit while watching it come to life. And if a customer arrives at the very beginning of the build process, we like to have them sign their baby before it's painted. It's a neat experience our customers love to take part in.

#### **What makes the Newmar Factory Tour Experience so special?**

Well, for starters, everyone gets a headset, so attendees can hear what their tour guide is saying from start to finish. Guests are able to see several stages of our assembly process inside of our main production facility. Each Newmar model is the subject of a four-day build, and people really enjoy getting to see our coaches come together. They're also pretty amazed at the level of knowledge our tour guides possess. They'll ask, "How do you know all of this?" And I always respond that it takes years of guiding tours and getting to know the products as closely as I've gotten to know them.

#### **Do you get a lot of non-Newmar owners on the Tour?**

There are a lot of people who come in and actively compare us to other manufacturers, and we welcome that. I want people to see how our coaches are built compared to other companies.

### MUST-KNOW INFO

#### **FACTORY TOUR SCHEDULE**

April-October: Twice a day at  
10 a.m. and 1 p.m. (EST)

November-March: Once a day at  
10 a.m. (EST)

#### **THE RULES**

- Guests are asked to check in 15 minutes before the hour in Building Nine (9), located off of Cheyenne St. in Nappanee, IN
- Reservations are not accepted – tours are given on a first-come, first served-basis
- No pets, open-toed sandals or children under the age of 8

To learn more, call **1.800.731.8300**.

meet Newmar

## SHOW DATES

Want to see select Newmar coaches up close and in person? Have questions you would love to have answered face-to-face? Check out the list below to see where we'll be next!

### TAMPA, FL

Florida RV SuperShow  
January 18-22, 2017

### CHANDLER, AZ

FMCA's 95th International Convention  
March 7-10, 2017

### HERSHEY, PA

America's Largest RV Show  
September 13-17, 2017

### SEDALIA, MO

Newmar Kountry Klub's  
32nd International Rally  
October 2-7, 2017  
Missouri State Fairgrounds

**“USING NPPI, THE INDUSTRY'S FIRST ONLINE TRAINING PROGRAM, WE EDUCATE OUR DEALER SALES AND SERVICE STAFF ON THE NEWMAR DIFFERENCE.”**

John Sammut - *VP of Sales & Marketing*



# HOW WE BUILD QUALITY INTO EACH AND EVERY NEWMAR COACH

BY BRAD TROXEL, NEWMAR QUALITY MANAGER

When I took on the role of Quality Manager, I replaced a man who had retired after 43 years of service with Newmar Corporation. I inherited a team of quality inspectors from him that has almost 170 years of combined experience with Newmar. And five of them have been here for more than 20 years. Needless to say, it's a loyal, dedicated group that always has been and always will be very, very conscious of what leaves our factory.

If you're quality driven, Newmar has a reputation in our industry as the place to be, and that's a tribute to what we do on a daily basis. Every person that works in our production department is taught to act as a quality inspector, which allows us to actually build quality into each of our coaches as they head down the assembly line.

We're always trying to refine. Whether it's implementing more work instructions or quality departmental checks for our production teams, or making sure our suppliers are coming in and auditing our processes as they relate to how we're installing their products.

Unlike a lot of other manufacturers, our relationship with our suppliers goes beyond a phone call every now and then. We choose to work hand in hand with our vendors to not only confirm that we are installing their product correctly, but to ensure that we have ample opportunity to provide feedback on where we (or our customers) are having problems.

We initiated our CQI (Customer Quality Inspection) process two years ago to enable Newmar to perform the best final inspection process we possibly could on each and every coach we build. Included was doubling the allotted inspection time and adding many new component function tests for each of our ten brands. We also perform over 1,000 quality checks as a coach moves through the assembly line, and we're always adding new inspection requirements as we see fit.



If we involve a new system in one or more of our coach models, we add that to our list of system or function checks that must undergo testing. Just because a feature adds more time to our inspections doesn't mean we're going to forgo it. And we never cut any inspection to make room for another.

At the end of each day, we know that we build and deliver some of the highest quality coaches on the market, but we refuse to be satisfied with that. We want to keep getting better every day.

**“WE ACHIEVE QUALITY THE RIGHT WAY, EVEN IF THAT WAY ISN'T THE FASTEST, OR EASIEST.”**

Kevin Bogan - VP of Manufacturing



*The Difference Magazine Vol. 1*



## LOOKING FOR MORE?

*Find just what you're looking for, from our Top RV Resorts Guide to our all-new resource, 50 Plates in 50 States – Your Guide to the Best Local Food in America, available for free at [NewmarCorp.com/resources](http://NewmarCorp.com/resources).*



# FROM NAPPANEE

To NYC



*Dover  
Interior*



*Durham  
Interior*



*Arundel  
Interior*



*Camber  
Interior*

Newmar Designer Kim Moore is constantly searching. And when it came to the new King Aire, Kim knew she had to find the best, even if it meant traveling to the hustle and bustle of New York City. It is there Kim discovered the Ralph Lauren® Home Collection, which can be found inside each and every 2017 King Aire.

To find out more about the process involved in selecting each of the four (4) exclusive Ralph Lauren décor selections available for 2017, we spoke with Kim from her office in Nappanee.

**When did you first consider using Ralph Lauren fabrics in the King Aire?** A few years ago, I was in New York City exploring several different fabric lines when I saw the Ralph Lauren Home Collection. We spoke internally about using them in a Newmar product for a couple of years before taking the next step, at which point we were invited to Ralph Lauren's New York showroom.

**How would you describe this showroom?** Ralph Lauren takes over a warehouse twice a year to present their entire line of furniture and fabrics to a select group of buyers. And it's not just furniture and fabrics – it's accessories, lighting, rugs and just about anything else you can imagine. They create vignettes that show where the inspiration for the fabric patterns originated, and Ralph Lauren himself actually walks through the entire display and approves everything, down to the last detail. It's an incredible thing to be a part of and it's certainly a lot of fun.

**How did you assemble each of the four Ralph Lauren décor selections found in King Aire?** When I visit Ralph Lauren's showroom, I select a number of different patterns and colors and get them back to Nappanee where I lay them out on a giant table, sort through my favorites and go from there.

**Why did you ultimately choose Ralph Lauren fabrics?** They're timeless. They don't look aged or dated, even after many years have passed. And much of what Ralph Lauren introduces is inspired by Mr. Lauren's yearly travels or personal homes, which lends to them a richness and character I have yet to find elsewhere. Finally, Ralph Lauren fabrics are meticulously crafted, which is important considering the King Aire is our flagship coach.

**What is your favorite thing about NYC?** Every trip I take to New York City is amazing. There's so much to see as it relates to architecture and design – it's an interior designer's dream.

**“WE TAKE THE CUSTOMER INPUT WE RECEIVE STRAIGHT TO THE DRAWING BOARD. IT'S A BIG REASON WHY WE'RE ABLE TO EXCEED CUSTOMER EXPECTATIONS, YEAR AFTER YEAR.”**

*Kyle McCrary - Director of Planning & Design*



# 10

## *RV-friendly fall travel* DESTINATIONS

There is no shortage of must-see destinations throughout the U.S., and the fall months are an opportunity to witness America's beauty at its best. From the mountains of Colorado to the forests of Ohio, if you're looking to take in all that nature has to offer between Labor Day and ski season, you have plenty of options.

Still, there are certain fall staples that stand above the rest, offering the kind of colorful foliage and RV – friendly accommodations you won't want to pass up.

**Where to stay:**  
**The Smoky Mountain Premier RV Resort**

01

THE GREAT SMOKY MOUNTAINS - *North Carolina and Tennessee*

Despite the widespread belief that mid-October is the best time to witness the colors of fall throughout the Smoky Mountains, the area remains an autumn spectacle well into November. If you're looking for a beautiful fall destination south of the Mason-Dixon Line, the Smoky Mountains are tough to beat.



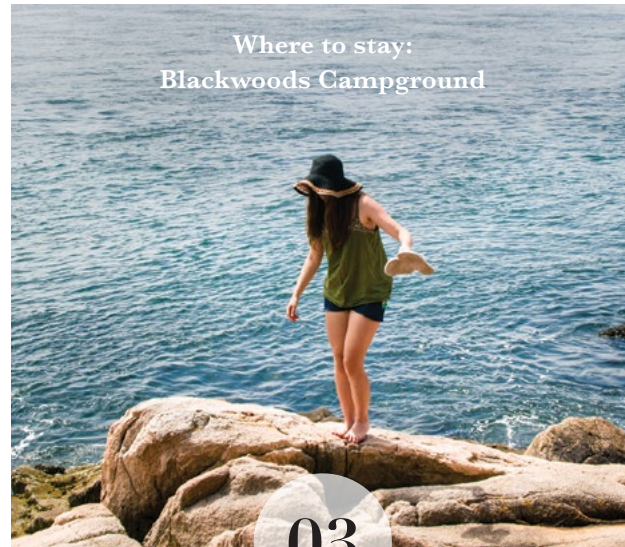


Where to stay:  
Yellowstone Grizzly RV Park

02

**YELLOWSTONE NATIONAL PARK**  
*Wyoming, Montana and Idaho*

Fall at the world-famous Yellowstone National Park is best viewed between mid-October and early November, when lucky visitors can witness magnificent color among the sugar maple, sweetgum and hickory trees.

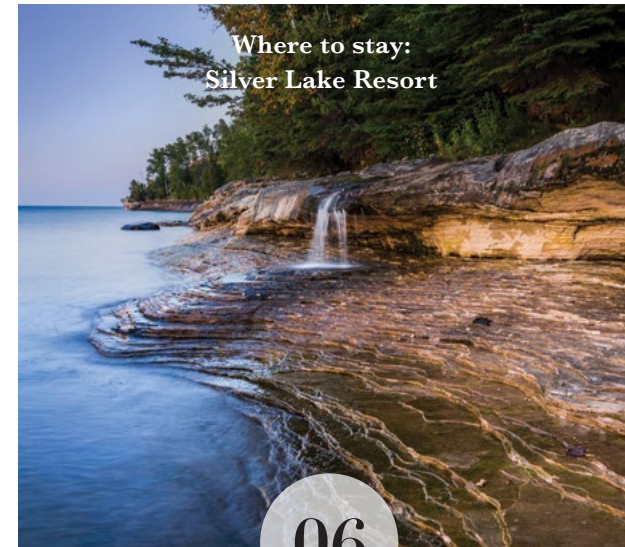


Where to stay:  
Blackwoods Campground

03

**ACADIA NATIONAL PARK**  
*Maine*

If you're looking to experience an east-coast autumn, there's no better place than Acadia National Park, located off of Maine's Atlantic coast. A late fall visit provides countless colorful views in an area that becomes less and less crowded as winter approaches.

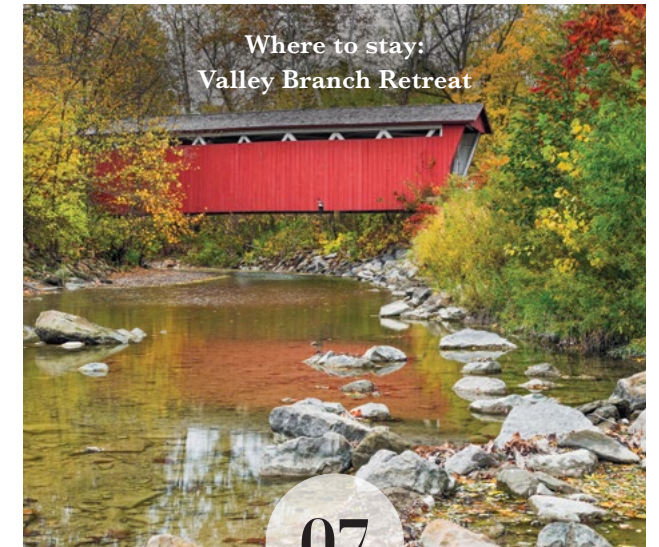


Where to stay:  
Silver Lake Resort

06

**UPPER PENINSULA**  
*Michigan*

Make your way to the uppermost part of Michigan during the autumn months and you'll be greeted by crisp, cool temperatures and the area's friendly residents, known as "Yoopers." Filled with character, the "UP" is a wonderful way to take in our nation's Great Lakes.

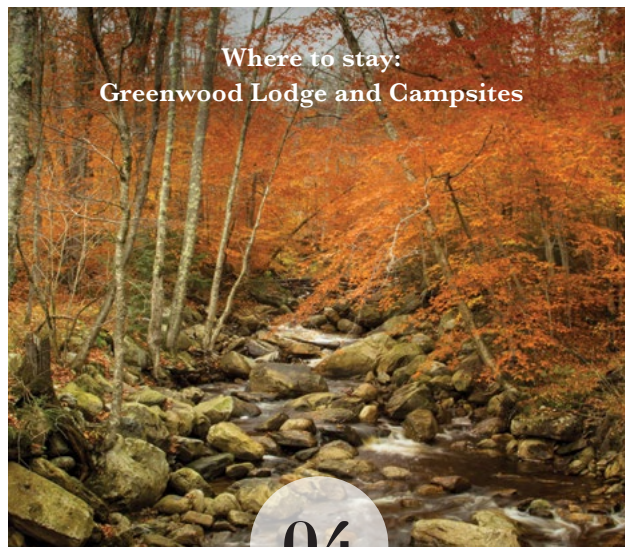


Where to stay:  
Valley Branch Retreat

07

**NASHVILLE**  
*Indiana*

While many think of hayrides and corn mazes when they think of fall in Indiana, Nashville offers the state's highest concentration of forested land. It's an enchanting place full of everything that makes fall in the Midwest unforgettable.



Where to stay:  
Greenwood Lodge and Campsites

04

**GREEN MOUNTAIN NATIONAL FOREST**  
*Vermont*

Vermont is a state beloved by fall fanatics nationwide, and the Green Mountains represent one of the main reasons why. Established in 1932, the Green Mountain National Forest is the perfect place for nature lovers who enjoy a good autumn hike.



Where to stay:  
Glenwood Canyon Resort

05

**ASPEN**  
*Colorado*

Although many think of snow-covered mountains when they think of Colorado's famous ski town, Aspen's Maroon Bells Mountains, located inside the White River National Forest, are the perfect place to photograph the glory of fall in the Rocky Mountain state.

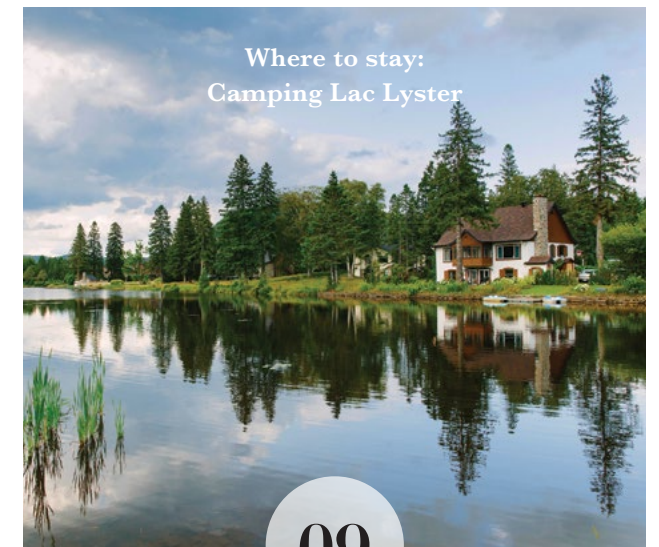


Where to stay:  
Polson Motorcoach & RV Resort

08

**GLACIER NATIONAL PARK**  
*Montana*

Glacier National Park is about more than the colors of the season. Located near the Canadian border, the park offers a quiet, rustic setting. The catch? Winter weather can strike suddenly, so make sure to view the weather report before departing for Northern Montana.



Where to stay:  
Camping Lac Lyster

09

**EASTERN TOWNSHIPS**  
*Quebec*

The Eastern Townships of Quebec, which border the U.S. for nearly 200 miles, offer many of the Canadian province's most spectacular fall views. An all-season destination, fall is an opportune time to enjoy the region's farmers markets, hiking trails and scenic villages.





10

HOCKING HILLS - *Ohio*

Located in Southeast Ohio, Hocking Hills is home to breathtaking views within a forest filled with cliffs, waterfalls and gorges. Hocking Hills is an excellent place to witness the spectacular colors of fall amongst some of the country's most historic rock formations. **Where to stay: Hocking Hills KOA in Logan, Ohio**



# NOT YOUR TYPICAL NEWMAR RV FAMILY

I'm Keith Sims, a retired Pro Bowl Offensive lineman for the Miami Dolphins and Washington Redskins, and a member of the Miami Dolphins game day broadcast team for the past four seasons. When I first retired from football, I began searching for a new passion. Little did I know it would be RV'ing!

My wife, Tia Sims, was the one who convinced me that our family needed to get into the RV lifestyle. Tia is a stay-at-home domestic engineer, homeschooling mom, and former social worker, and was passionate about the possibilities RV'ing would bring to our family. In today's society, where families struggle to find time to spend as one, I was sold, but would the kids be as excited as we were? How in the world do we get started?



We began by doing a ton of online research, visiting some local dealerships and attending a few RV shows. We then put together a wish list that included interior living space, comfort, driveability, manufacturer and price. In our search to find the most RV for our money, we received some advice from a couple of longtime RV'ers who told us, "Buy your third RV first."

At the time, we really didn't take that advice to heart. We decided to go a more "cost effective" route and chose a used coach built by a Newmar competitor. It didn't go very well. In fact, our first week-long trip was a nightmare. Fortunately, that nightmare only strengthened our desire to make RV'ing a part of our lives. We just needed to find the right RV.

## ENTER NEWMAR

When we revisited our old notes, we came across some more advice we had ignored: "Choose a manufacturer you can trust." This time, we did detailed research on the top Class A manufacturers in our price range. We test drove three brands before my wife drove a Newmar. Once she did, the search was over! Comfort Drive™ sealed the deal. And we could tell Newmar was a company that cared about both the quality of their products and the satisfaction of their customers.

## OUR FIRST NEWMAR, BUT NOT OUR LAST.

We made the decision to purchase our first Newmar: a 2015 Ventana 4369. Buying our Newmar has changed our RV'ing lives. Gone was the worry that our RV would break down. Gone was the exhaustion we had felt after driving our RV. And gone was the fear of taking long trips.



*Want to follow along with the Sims family? Just visit [soulfulrvfamily.com](http://soulfulrvfamily.com)*

## ONE NEWMAR JUST WASN'T ENOUGH

While at the Atlanta RV show, we had a chance to speak with a Newmar representative about a few of the upgrades we wanted to make to our Ventana. Upgrades such as adding a dishwasher.

The owner of our dealership, National Indoor RV Center, happened to overhear the conversation. They had stood by the RVs they had sold us, even the used coach that didn't work out. He showed us a Dutch Star, and it had everything we were looking for and more. He offered me a great deal, and since we had already purchased two RVs from NIRVC, I felt they were a dealership we could trust. So we made the deal for the Dutch Star 4369.

## OUR RV LIFESTYLE

One of the biggest surprises we encountered when we joined the RV lifestyle was the lack of visible minorities who shared our passion. We didn't see a lot of minority families out there enjoying RV'ing, which didn't make sense to us. So we decided we wanted to help change that, and owning a Newmar has helped. Everywhere we have traveled, we have been treated with respect by RV'ers of all ages and backgrounds, and we're excited to continue encouraging other minorities to join us.



One of our favorite excursions was a recent voyage to visit Mount Rushmore. It was a three-week-long trip there and back, and it was fabulous. We all had so much fun. In fact, when we pulled into our driveway after three weeks in our Ventana, our boys asked, "What are we doing home?" They wanted to keep going!

## ADVENTURES OFF OF EVERY HIGHWAY

There are so many advantages of owning a Newmar. With the support they and our dealer have given us, we have the confidence to take our RV anywhere in America.



We have taken our boys to see places like Mount Rushmore, the Liberty Bell, and the Statue of Liberty. They have gone hiking at Acadia National Park, rafting in the Smoky Mountains, and have enjoyed the beaches of Florida. They have learned about American history at places like Minute Man National Historical Park, and have visited places important to our African American history, such as the International Civil Rights Museum in Greensboro, North Carolina, the Rosa Parks Memorial in Montgomery, Alabama, and the Boston African Historical site in the beautiful city of Boston. I can't wait for what's next!





# Delicious & NUTRITIOUS

## 5 HEALTHY (AND TASTY) RECIPES

*From TheFitRV.com*

Stef and James launched TheFitRV.com with the goal of “keeping you and your RV on the road.” And in addition to travel-friendly workouts, their site offers reviews of both RVs and RV parks, along with plenty of wholesome recipe ideas. It’s all about helping RV’ers live a happier, healthier lifestyle.

Within the next few pages, you will find five outstanding recipes you can prepare from the comfort of your coach!

For more recipes, including Chocolate Berry Granola (seen above), visit [TheFitRV.com](http://TheFitRV.com)!



# COFFEE PEANUT BUTTER

# Smoothie

## WHAT YOU'LL NEED:

- 1 cup cold coffee (brewed or instant)
- 1 banana
- 2 tablespoons peanut butter
- 1 tablespoon half and half
- 1 packet of Stevia
- 6-10 ice cubes

## DIRECTIONS:

1. Blend and enjoy!

## WHAT YOU'LL NEED:


- 2 cups unsweetened almond milk (or any type of milk)
- ½ cup chia seeds
- 2 tablespoons sweetener of your choice: agave, honey, or pure maple syrup
- ¼ teaspoon vanilla

## DIRECTIONS:

1. Pour everything in a quart-sized mason jar.
2. Tighten the lid and shake.
3. Refrigerate overnight (or for at least an hour or two).
4. Get creative with toppings and enjoy it cold.

# Chia PUDDING





# Wasabi

## GREEN BEAN FRIES

### WHAT YOU'LL NEED:

- 1 lb. fresh green beans (be sure to trim the ends)
- 1 tablespoon olive oil
- 1½ tablespoons sriracha
- 2 teaspoons soy sauce
- 2 teaspoons powdered wasabi

### DIRECTIONS:

1. Preheat oven to 350 degrees.
2. Wash and dry beans thoroughly.
3. Toss beans with olive oil, hot sauce and soy sauce.
4. Roast beans in the oven for about 30-40 minutes, stirring once halfway through.
5. Once beans appear shriveled and lightly browned, remove from the oven and sprinkle with wasabi powder.



# Guilt-Free

## CARAMEL AND CAMPFIRE APPLES

### WHAT YOU'LL NEED:

- 1 cup fat-free milk
- ½ cup coconut palm sugar
- 1 tablespoon water
- 1 tablespoon corn starch
- 2 teaspoons fresh lemon juice
- Whole apples
- Apple slicer
- Aluminum foil
- Chopped walnuts

### DIRECTIONS:

1. Bring coconut palm sugar, corn starch, and water to a boil in a small saucepan (if using salt, add it at this time).
2. Add milk and lemon juice.
3. Simmer for 20 minutes or until sauce thickens. Keep stirring so that sauce doesn't burn.
4. Pour sauce in a small glass jar and store in the refrigerator.

### TO MAKE THE CAMPFIRE APPLES:

1. Use an apple slicer to core and slice each apple.
2. Put apple slices back together so that each apple looks whole again.
3. Double wrap each apple in aluminum foil, twisting it at the top so you'll have a nice handle for grasping (and to make your bowl for later). Do not puncture the foil.
4. Place the apples directly on your campfire coals. Roast for 10-15 minutes, turning occasionally, or until the apples begin to soften.
5. Open the foil packs from the top so that the foil becomes your bowl. Pour caramel sauce and some crushed walnuts over the top.



# PISTACHIO Granola



## WHAT YOU'LL NEED:

- 2 1/4 cups rolled oats (not quick cooking)
- 3/4 cup shelled raw pistachios
- 1/2 cup coconut flakes (unsweetened)
- 1/2 cup honey
- 1 tablespoon coconut oil
- 1/2 teaspoon sea salt
- 1/2 cup chopped tart dried cherries

## DIRECTIONS:

1. Preheat oven to 300 degrees.
2. Lightly chop the raw pistachios. Reserve a rounded tablespoon of the raw pistachios.
3. Mix together rolled oats, raw pistachios and coconut in bowl.
4. Microwave the honey, coconut oil, and salt for about 30 seconds, and then stir until the coconut oil has a liquid consistency.
5. Pour honey mixture over the oat mixture and toss thoroughly.
6. Transfer to a parchment-lined rimmed baking sheet and spread in an even layer.
7. Bake 25 to 35 minutes, stirring every 7-10 minutes.
8. Add the remaining tablespoon of raw pistachios and dried fruit.

# DON'T CUT CORNERS. EMBRACE THEM.

## COMFORT DRIVE™ + PASSIVE STEER

A Newmar exclusive, Comfort Drive™ plus Passive Steer erases steering friction and delivers a tighter turning angle, letting you tackle twists and turns with more confidence and less fatigue.

It's something we like to call "the ultimate RV driving experience," and it's technology you can test drive today.\* Find your closest dealer at [NewmarCorp.com/dealers](http://NewmarCorp.com/dealers)



An advanced tag axle design eliminates costly tire scrub wear and delivers safer, more precise handling.



WHEN YOU KNOW THE DIFFERENCE™

\*Comfort Drive™ plus Passive Steer is standard on the 2017 Ventana (40'-43' floor plans), Dutch Star (40'-43' floor plans), Mountain Aire, London Aire, Essex and King Aire.





# FIVE WAYS RV'ING BEATS FLYING

If you love RV'ing, you've probably found yourself aboard a commercial jet at one time or another, thinking to yourself, "I sure wish I was 30,000 feet below, cruising down the highway in my coach." And you're not alone. Millions of people, including your friends at Newmar, would choose the freedom of the open road over a cramped airplane any day.

Nevertheless, there are those out there who feel that traveling the "friendly" skies is the way to go. For those folks, we've compiled a list of reasons why hitting the road almost always beats taking flight.

## 1. WHEN YOU'RE UP IN THE SKY, YOU MISS THE JOURNEY

One of the best things about over-the-road travel is the time spent on the way to your destination. The road trip games, bonding with family and friends – not to mention the sights and sounds you encounter driving across this great nation of ours. From the fields of green and gorgeous mountain ranges, to the soaring skylines and unforgettable landmarks, it doesn't get any better than life on the highway.

## 2. RIDING IN A COACH IS MUCH BETTER THAN FLYING COACH

Up in the air, you're forced to spend hours on end confined to a narrow seat in a cramped space. Turbulence is a nightmare that is often unavoidable, and if you aren't lucky enough to land a window seat, the only scenery involves the people sitting just inches away. A motorhome, on the other hand, is a roomy, plush oasis where everyone rides first class. You choose the movie, and can even take a nap in your own bed.



## 3. ON THE GROUND, YOU'RE IN CONTROL

When you board a flight, you're no longer the leader of the ship. You're told when you can get up and walk around, and snacks are limited to a bag of peanuts and can of soda. Should you need assistance, you have to rely on a flight attendant who is likely exhausted, jet-lagged and irritated from dealing with rude passengers. With a motor coach, however, you're the captain, in charge of everything from the speedometer to what's playing on the radio.



## 4. WITH AN RV, YOU CAN BRING IT ALL

Sure, flying will get you there, but you'll be leaving a whole lot behind. Save for some luggage and a small carry-on bag, you won't be bringing much with you on a plane other than a few outfits and some travel-size toiletries. Get there in a Class A motorhome, and you and yours will arrive with all of your gear, including your entire wardrobe, camping and recreation supplies – even your pets!

## 5. RV'ING JUST PLAIN COSTS LESS

In many cases, traveling by RV adds up to a less expensive family vacation. Don't believe it? According to a PFK comparison study, a family of four can save 25-59 percent on vacation expenses traveling by motor coach, while couples can save 11-46 percent, even after fuel and ownership costs are considered. The same study also found that vacationing in a Class A coach was 45 percent less expensive than an upscale vacation, taking into account both airfare and hotel accommodations.



# four-legged ROAD WARRIORS



The online home of the RV lifestyle, [GoNewmar.com](http://GoNewmar.com) is the place to discover new must-see destinations, win prizes and share your favorite photos – including those of your fur babies! Dozens of GoNewmar members already have, and we've included a few of our favorites!

RAVE REVIEWS

from Newmar customers

**LARRY & KATIE HARRINGTON**

“Once you go with a Newmar, you never go anywhere else.”

**EVAN & DEBBIE HUGHES**

“We absolutely love our Newmar coach and would never buy another brand. Every time we've called Newmar they have responded immediately. They answer our questions, they can tell us where things are, and that's the stuff that makes us extremely proud to be Newmar owners.”

**JEFF & TERRY RODICK**

“Originally we bought a Newmar because of the quality itself. Just the workmanship and the way it's put together. Then once we owned it we realized how great Newmar service really is. The company takes care of you.”

**PHIL & JUDY NEWTON**

“If a coach has the Newmar name on it, it doesn't matter what the problem is, they're going to stand behind it. The reason we bought our Newmar was because of the people.”

**NORM & ELLEN MCCLLOUD**

“Comfort Drive and Passive Steer together, it just makes a huge difference.”





# Crafting the Ultimate RV EXPERIENCE

BY FREIGHTLINER CUSTOM CHASSIS CORPORATION



In a well-constructed motorhome like a Newmar, the chassis and coach are seamlessly integrated to deliver a higher level of performance. That's why our team at Freightliner Custom Chassis Corporation (FCCC) relentlessly focuses on RIDE – four key aspects of our chassis development process that directly impact your RV driving experience.

Working side by side with Newmar engineers, we custom-build each of our chassis to fit several Newmar models. Through our shared focus on quality, innovation and customer support, FCCC and Newmar work together to deliver the “ultimate RV driving experience.”

To learn more about Freightliner Custom Chassis and our commitment to crafting unmatched ownership experiences, visit our website at [FCCCRV.com](http://FCCCRV.com).

## R: RIDE AND HANDLING

From the highway to the campground, your chassis determines the way your coach feels and drives out on the road. That's why we've done more to improve RV ride and handling than any other luxury RV chassis manufacturer. Take our UltraSteer® tag axles, for example. UltraSteer technology provides a 45-foot motor coach with the tightest turning radius available. And that's just the beginning – from front-wheel cut to our exclusive V-Ride® Rear Suspension System, FCCC sets the stage for an unmatched driving experience. See UltraSteer and V-Ride in action on our YouTube Channel at [youtube.com/FreightlinerChassis](http://youtube.com/FreightlinerChassis).

## I: INFINITE SUPPORT

When you're living the RV lifestyle, you never know when you'll need a hand to get you back out on the road. FCCC is the only chassis manufacturer to offer factory-direct support 24 hours a day, 7 days a week for the life of your RV – not just the warranty period. It's called 24/7 Direct, and it includes access to the RV industry's largest, most comprehensive diesel service network, as well as a free mobile app, a personalized USB card chock-full of valuable info, and much more. Download the 24/7 Direct app today for your Apple, Android or Windows device by searching “Freightliner 247.”

## D: DAIMLER HERITAGE

As a member of the global Daimler family, FCCC shares the heritage, technology and engineering excellence of Freightliner and Mercedes-Benz. That means each chassis that rolls off our line meets the strict manufacturing standards of Daimler. And it all happens in our hometown of Gaffney, South Carolina – the heart of peach country. Our quality American craftsmanship combined with world-class Daimler engineering has helped FCCC become one of the most valued brands in the RV industry. We even have an apparel line dedicated to our “Grown in Gaffney” spirit – take a look at [4UZRV.com](http://4UZRV.com).

## E: EXPERIENCE OF OWNERSHIP

Beyond the comfort and peace of mind that comes with our comprehensive service network, FCCC owners have access to more resources and benefits than any other owner group. In-depth training at Camp Freightliner and our factory-led Fireside Chats at rallies and shows across the country let you get to know your chassis inside and out. And the Freightliner Chassis Owners Club, or FCOC, offers group discounts, including Chrysler vehicles at below-invoice prices, parts and labor discounts, chances to attend rallies nationwide, along with a free subscription to *RV Soul*, a quarterly magazine.





# Luxury Has a New Look

The recipient of a full makeover, the 2017 King Aire is designed, engineered and decorated to represent the pinnacle of luxury travel.

It begins with a fully reimagined exterior created in partnership with British designer **Carsten Astheimer**. The Newmar-engineered **STAR Foundation** now acts as the throne for every King Aire, and all-new front and rear caps don full **LED head and tail lamps**.

Inside, a completely redesigned cockpit is unlike anything you've ever seen in a motor coach. Contrasted cross stitching spans the entire dash, which houses a full **LCD** driver display and **two 12.1" touchscreens**.

---

**“WHEN YOUR GOAL IS TO BUILD  
THE VERY BEST, YOU WILL STOP AT  
NOTHING TO DELIVER THE GREATEST  
THE WORLD HAS EVER SEEN.”**

Matt Miller  
*Newmar President*



T H E N E W M A R

# CUSTOMER EXPERIENCE

The Newmar Difference goes beyond our industry-leading motor coaches to deliver you with an unrivaled ownership experience.



## QUALITY FROM THE START

Every Newmar is crafted one at a time by folks who have spent an average of 13 years building them. And each coach we assemble must undergo more than 1,000 quality checks before ever leaving the Newmar factory.



## EVERYTHING IN ONE PLACE

As a Newmar owner, you'll find resources specific to your coach through Newgle, an easy-to-use knowledge base that houses everything from user guides to technical support documents.



## FRIENDS FOR LIFE

Join Newmar and meet fellow owners through the Newmar Kountry Klub, a top social club for RV travelers. Or, connect using the world's only social sharing website created for RV'ers, by RV'ers – GoNewmar.com.



## WE'RE HERE TO HELP

Have a question? Need to file a claim? Our Warranty team is ready, willing and able to do whatever it takes to make things right, right away.



## SEAMLESS SERVICE

Available 24/7, our service specialists ship in-stock parts to arrive the next day. And if a part is out of stock, we'll pull it from the production floor. It's all about getting you back on the road ASAP.



## WE HAVE YOUR BACK

Should you need roadside assistance, we'll send a mobile technician out to assist you virtually anywhere in North America.



## ROCK-SOLID WARRANTY COVERAGE

All models include a 1-year/unlimited mileage limited warranty and a 5-year, non-transferable structural warranty that covers your vehicle's superstructure in the event it fails to perform. Ask your Newmar dealer for details.

*Right: The Newmar STAR Foundation chassis weld process →*

**“EVERY INNOVATION WE PIONEER SHARES THE SAME PURPOSE TO IMPROVE THE CUSTOMER EXPERIENCE.”**

Ron Stichter  
*VP of Engineering*





# SUPERIOR TECHNOLOGY ENGINEERED TO EXCEED YOUR EXPECTATIONS

The Newmar commitment to quality is embodied in the way you experience Sony® in-coach entertainment. Sony's superior level of features and innovative technology can be found in almost every 2017 Newmar coach.



## TOP ENTERTAINMENT FROM A TOP INNOVATOR

Almost seventy years as one of the world's leading electronics manufacturers has made Sony into a brand that is known across the globe. With an unlimited passion for technology, content and services, combined with a relentless pursuit of innovation, Sony delivers tomorrow's technology, today. No other brand is there from idea conception, to the movie set, to the recording studio, to your entertainment.

## BREATHTAKING DESIGN MEETS CUTTING-EDGE PERFORMANCE

Blending aesthetics with the quest for seeking only what is essential, Sony's products are crafted to complement your coach's interior yet engineered for ease of use. Created with a passion for detail, Sony technology combines deep, rich colors, and concert-quality sound.



## CAPTURING THE COLORS OF LIFE

See more of life's brilliance. Sony televisions can reproduce a dazzling range of vivid, natural colors, making everything you watch more real and lifelike. Unique to Sony, a TRILUMINOS Display™ enriches your viewing experience with a wider palette of colors revealing natural shades and hues.

## THE SECRET BEHIND SONY 4K HDR

High Dynamic Range is the new standard for picture quality, offering a much wider range of color, contrast, and clarity. A Sony 4K HDR TV takes things a step further, using technologies like 4K X-Reality PRO™, X-tended Dynamic Range™ PRO, and TRILUMINOS Display™ to reveal previously unavailable levels of realism, making you feel like a part of every scene.



## SOUND THAT DRIVES YOU

Every journey needs a soundtrack. So whether you want to crank the volume for a day at the campground or simply liven up your drive time, Sony's innovative audio systems will breathe new life and emotion into every track.



## 2016 CUSTOMER SATISFACTION AWARD

Sony received the 2016 J.D. Power & Associates Customer Satisfaction Award for performance/reliability, features, ease of operation, built-in online capabilities, customer service and warranty, so you know you're in for years of trouble-free entertainment.



# ELEVEN WAYS A NEWMAR DIESEL PUSHER



Newmar Diesel and Luxury diesel coaches have always represented our tireless dedication to delivering what's next, now. The first coaches to offer power slideouts, Newmar diesel pushers have been leading the industry forward for over a quarter century.

And because we've never found comfort in resting on our laurels,

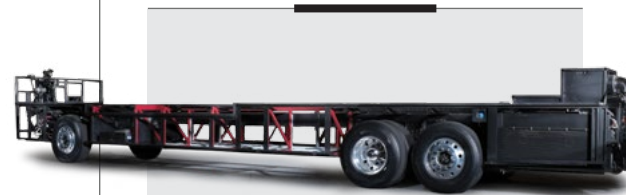
we work hard year in and year out to ensure the Newmar difference never becomes "just a phrase."

Loaded with features and full of customer-driven innovation, there is no better way to experience the RV lifestyle than in a Newmar. Here are 10 reasons why.

## 1. COACH-MOUNTED HAMMOCKS

An option on every 2017 Newmar Diesel motor coach, our side-mounted hammocks are a dream come true, especially in front of an available exterior entertainment center.

*Available on all 2017 Diesel and Luxury diesel models*



## 2. THE STAR FOUNDATION

Developed in-house by Newmar engineers, the STAR Foundation is a modern steel superstructure that enhances chassis strength while delivering a smoother, quieter ride over a multitude of surfaces.

*Standard on all 2017 Diesel and Luxury diesel models*

## 3. PASSIVE STEER TECHNOLOGY

The result of an advanced tag axle design, Passive Steer pairs with Comfort Drive to deliver a tighter turning angle, reducing costly tire scrub wear and providing safer, more precise handling capabilities.

*Standard on the 2017 Ventana,\* Dutch Star\* and all 2017 Luxury diesel models*

## 4. INDUSTRY-EXCLUSIVE FLOOR PLANS

The 2017 Newmar Diesel and Luxury diesel lines offer a combined 25 unique floor plan selections, including brand new two-bunk, two-full-bath designs and a 43-foot wheelchair-accessible layout.

*Two-bunk, two-full-bath floor plans: Ventana LE (4042), Ventana, Dutch Star (4310), Mountain Aire, London Aire (4525)  
Wheelchair-accessible floor plan: Ventana, Dutch Star (4311)*

## 5. JBL® COCKPIT AUDIO

Custom-tuned to maximize sound quality, Newmar Diesel coaches are equipped with 6-speaker, 180-watt JBL® cockpit audio systems, while Luxury diesel coaches are upgraded to 11-speaker, 360-watt systems.

*Standard on all 2017 Diesel and Luxury diesel models*

## 6. A PREMIER CUSTOM CHASSIS

We build each of our Diesel and Luxury diesel coaches with products from the world's best chassis manufacturers – Freightliner® Custom Chassis and Spartan® Chassis.

*Freightliner chassis standard on: Ventana LE, Ventana. Freightliner chassis available on: Dutch Star, Mountain Aire, London Aire, Essex. Spartan chassis available on: Dutch Star and all 2017 Luxury diesel models.*

## 7. CATHEDRAL CEILING

A Newmar first, Cathedral Ceiling adds six inches headroom to select rear-bath floor plans – all while remaining virtually invisible on the outside.

*Standard on all 2017 Dutch Star and Luxury diesel models with a rear-bath floor plan*



## 8. COMFORT DRIVE™

A Newmar exclusive, Comfort Drive™ is a self-straightening steering wheel that actively eliminates friction, so you can navigate twists and turns with more comfort and less fatigue.

*Standard on all 2017 Diesel and Luxury diesel models*

## 10. FEATURE CEILING

Another Newmar exclusive, Feature Ceiling removes exposed vents without disrupting air flow, creating a more upscale appearance inside your home on wheels.

*Standard on all 2017 Diesel and Luxury diesel models*



## 9. PREMIUM ENTERTAINMENT CENTERS

Select 2017 Newmar Diesel models are outfitted with a whole host of technology from names like Sony® and Bose®, including Sony high-definition LED TVs and Bose CineMate home theater systems.

## 11. THE INDUSTRY'S BEST CRAFTSMANSHIP

Every 2017 Newmar coach, from Bay Star Sport to King Aire, is built to order one at a time by men and women who have been with Newmar for an average of 13 years. No mass production. No batch builds.

*\*40'-43' floor plans only*



# HOME IS WHERE YOU TAKE IT

## THE 2017 NEWMAR MOBILITY LINEUP

The world's only line of wheelchair-accessible Class A motor coaches, the Newmar Mobility Lineup lets you travel almost anywhere and stay as long as you like.

Whether you choose the gas-engine Canyon Star (3911) or the diesel-powered Ventana or Dutch Star (4311), each coach is engineered to deliver uncompromising accessibility, so you can feel right at home no matter how far you roam.

Explore the 2017 Newmar Mobility Lineup and discover accommodations like fully-integrated lifts, easy-to-reach appliances, extra-wide aiseways and more.



Download the full digital brochure or request a printed copy at [newmarcorp.com/mobility](http://newmarcorp.com/mobility).



1 Height-adjusted appliances make preparing your favorite meals simple

2 Widened aisleways let you move throughout the cabin with ease

3 ADA-approved roll-in showers are outfitted with fold-away seats





LEADING THE WAY IN SAFETY INNOVATION

# SPARTAN CHASSIS

BY SPARTAN MOTORS, INCORPORATED

Just as the automotive sector has increased the safety technology found in passenger cars in recent years, the RV industry has been working to improve the safety of its products, particularly in the Class A segment. As the industry leader in chassis-centric innovations, improving the safety culture in its respective markets is core to Spartan Motors.<sup>®</sup> That's why they've partnered with key RV industry stakeholders, like Newmar, to raise the bar on safety.



## LUXURY, MEET SAFETY

Spartan Motors, Inc., the premier foundation for Class A RVs like those from Newmar, has made it their mission to bring first-to-market safety provisions to Class A RVs. Spartan's Advanced Protection System,<sup>®</sup> launched on select 2017 model-year coaches, delivers a robust and comprehensive suite of safety features to some of the largest and most luxurious vehicles on the road.

With Spartan's Advanced Protection System, true automotive-grade comprehensive collision mitigation, electronic stability control, adaptive cruise control and integrated tow-vehicle braking is now available to Newmar customers.

## SPARTAN'S ADVANCED PROTECTION SYSTEM

The Spartan Advanced Protection System (APS) is a comprehensive suite of collision mitigation and coach-stability-related safety features, designed to make owning and operating a Class A RV safer for drivers, passengers, and other vehicles that share the road.

The Spartan Advanced Protection System includes the following capabilities:

- **Collision Mitigation (Forward Warning paired with Active Braking)** is an always-on radar-based monitoring system that provides audio and visual warnings of potentially dangerous driving scenarios, even when cruise control is not set. If no action is taken and the system determines a collision is imminent, the coach actively brakes to mitigate the chance of a crash
- **Electronic Stability Control (ESC)** automatically brakes individual coach wheels to help drivers maintain control during extreme steering maneuvers as might occur while traversing an on- or off-ramp, or quickly changing lanes
- **Adaptive Cruise Control** assists the driver in maintaining a safe following distance behind the vehicle in front of them by decelerating automatically, as another vehicle draws near
- **Spartan Safe Haul™** is a hydraulic tow-vehicle braking system integrated with Spartan's chassis systems to supply optimal braking performance

## 2017 MODEL YEAR AVAILABILITY

"Giving Newmar owners the ability to equip their coaches with industry-leading safety features is something we're passionate about. It's important to us that Newmar drivers and passengers feel comfortable and well-equipped on the road. Lending technology-enabled defensive driving capabilities, thanks to Spartan's Advanced Protection System, goes a long way toward making sure our owner community is prepared to enjoy every adventure," explained John Sammut, Newmar Vice President of Sales and Marketing.

Now, no matter what the road ahead has to offer, you can be sure your Newmar coach is prepared to respond.

Spartan's Advanced Protection System is available as an option on the following 2017 Newmar models:

### King Aire:

- Comes standard with ESC and Safe Haul
- Optional collision mitigation and adaptive cruise control

### Essex:

- Comes standard with ESC and Safe Haul

### London Aire:

- Comes standard with ESC and Safe Haul

### Mountain Aire:

- Comes standard with Safe Haul



*Visit your favorite Newmar dealer to learn more about Spartan chassis safety provisions and how they can keep you covered on the road, so you can safely enjoy every adventure.*



the 2017  
LINEUP



SELECT  
YOUR  
GETAWAY  
COACH





## BAY STAR SPORT

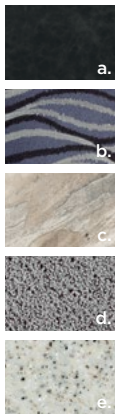
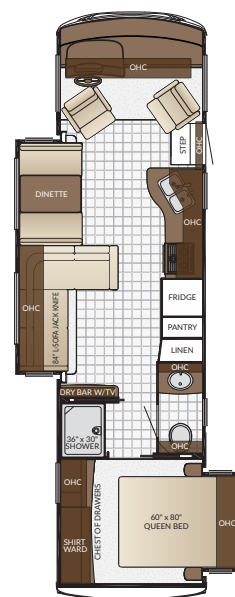
*gas motor coach*

IMAGE ABOVE  
Anthracite Interior/Exterior  
Floor Plan 3208 (pictured right)

IMAGE LEFT A  
a. Furniture b. Accent Fabric c. Flooring  
d. Carpet e. Counter Top

IMAGE LEFT B  
Sienna Glazed Maple Cabinetry

New for 2017, Bay Star Sport 3208 features double slideouts with both the kitchen and dining area at the front of the coach. There's also a partial-leather buffet dinette, large pantry and 84" L-shaped sofa that directly faces an LED TV.



## BAY STAR

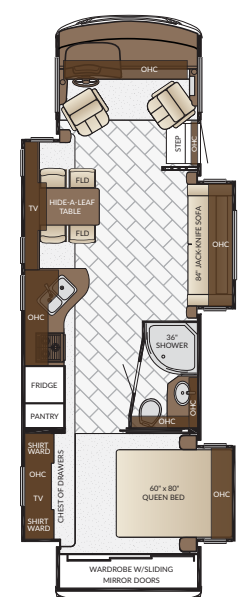
*gas motor coach*

IMAGE ABOVE  
Intrigue Interior/Exterior  
Floor Plan 3333 (pictured right)

IMAGE LEFT A  
a. Furniture b. Accent Fabric c. Flooring  
d. Carpet e. Counter Top

IMAGE LEFT B  
Astoria Glazed Maple Cabinetry

New for 2017, Bay Star 3333 features triple slideouts and a mid-ship kitchen. There's even a Hide-a-Leaf dinette just across from an 84" jackknife sofa. What's more, the master suite houses an accommodating full-wall wardrobe.







## CANYON STAR

*gas motor coach*

IMAGE ABOVE  
Dellwood Interior/Exterior  
Floor Plan 3914 (pictured right)

IMAGE LEFT A  
a. Furniture b. Accent Fabric c. Flooring  
d. Carpet e. Counter Top

IMAGE LEFT B  
Sienna Glazed Maple Cabinetry

Canyon Star 3914 features a direct path to the master bedroom, where you will find a King bed positioned in front of an LED TV. Up front, there's a 100" Hide-a-Bed sofa, spacious dinette and a newly available recliner.



## VENTANA LE

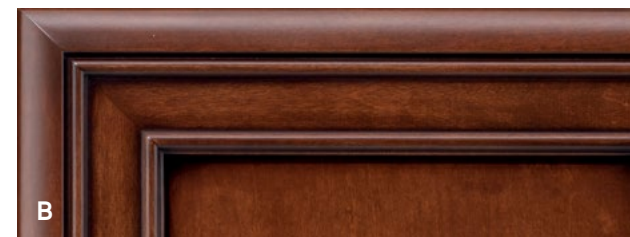
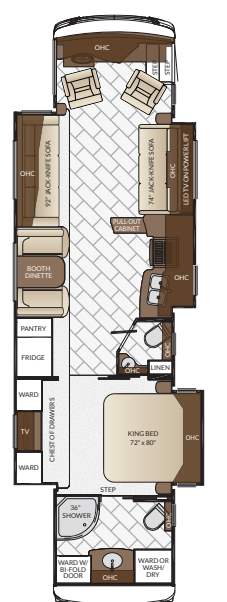
*diesel motor coach*

IMAGE ABOVE  
Seaspray Interior/Exterior  
Floor Plan 4037 (pictured right)

IMAGE LEFT A  
a. Furniture b. Accent Fabric c. Flooring  
d. Carpet e. Counter Top

IMAGE LEFT B  
Empire Glazed Maple Cabinetry

Ventana LE 4037 features a luxurious rear master bath available with a stacked washer and dryer. The master bedroom provides a King bed and ample wardrobe space, while the front of the cabin brings you two jackknife sofas.







## VENTANA

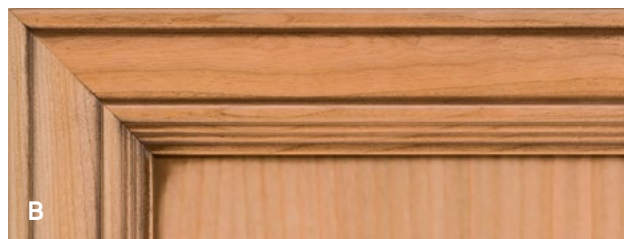
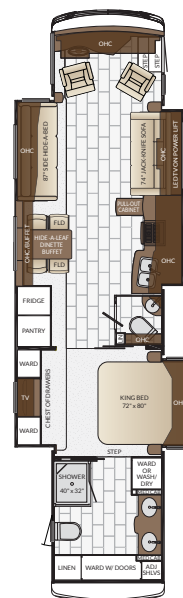
*diesel motor coach*

IMAGE ABOVE  
Fieldstone Interior/Exterior  
Floor Plan 4369 (pictured right)

IMAGE LEFT A  
a. Furniture b. Accent Fabric c. Flooring  
d. Carpet e. Counter Top

IMAGE LEFT B  
Carmel Glazed Cherry Cabinetry

The largest floor plan ever offered on Ventana, 4369 is available with bunk beds or an extra helping of wardrobe space, and delivers creature comforts like a Hide-a-Bed sofa, King bed and LED TV on a retractable Televator.



## DUTCH STAR

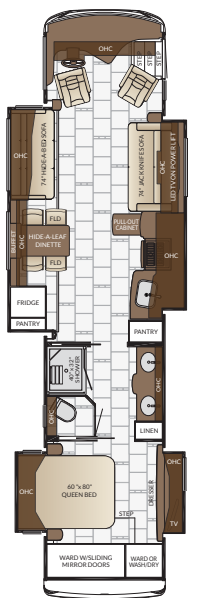
*diesel motor coach*

IMAGE ABOVE  
Prism Interior/Exterior  
Floor Plan 4054 (pictured right)

IMAGE LEFT A  
a. Furniture b. Accent Fabric c. Flooring  
d. Carpet e. Counter Top

IMAGE LEFT B  
Wicker Glazed Maple Cabinetry

New for 2017, Dutch Star 4054 features quadruple slideouts and opposing 74" sofas, one of which houses a Hide-a-Bed. A mid-ship master bath provides a twin-sink vanity, dual medicine cabinets and a full-length mirror.







## MOUNTAIN AIRE

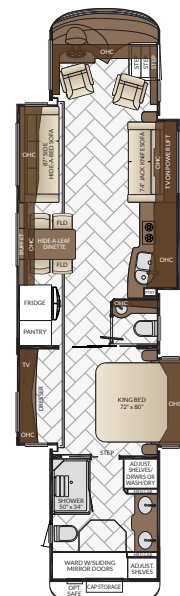
*luxury motor coach*

IMAGE ABOVE  
Hawthorne Interior/Exterior  
Floor Plan 4519 (pictured right)

IMAGE LEFT A  
a. Furniture b. Accent Fabric  
c. Accent Fabric d. Carpet e. Counter Top

IMAGE LEFT B  
Sable Maple Cabinetry

Mountain Aire 4519 is a bath-and-a-half floor plan that gives you both an 87" Hide-a-Bed sofa and 74" jackknife sofa. A Hide-a-Leaf dinette is positioned next to a residential refrigerator, while a King bed and 50"x 34" shower are included.



## LONDON AIRE

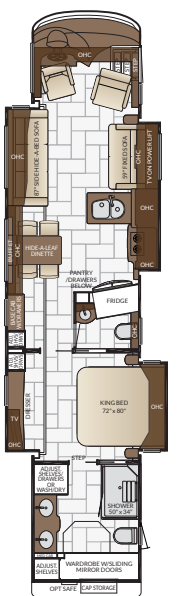
*luxury motor coach*

IMAGE ABOVE  
Westport Interior/Exterior  
Floor Plan 4513 (pictured right)

IMAGE LEFT A  
a. Furniture b. Accent Fabric  
c. Accent Fabric d. Carpet e. Counter Top

IMAGE LEFT B  
Wicker Glazed Maple Cabinetry

New for 2017, London Aire 4513 is a bath-and-a-half floor plan that houses a spacious full-wall rear wardrobe. In the master bath, you will find a twin-sink vanity and 50"x 34" shower. Up front, there's a unique L-shaped kitchen.







## ESSEX

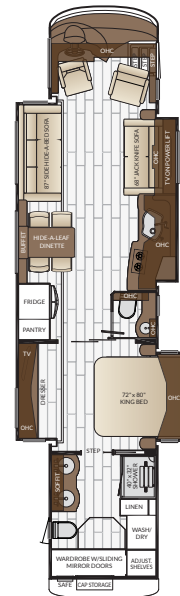
*luxury motor coach*

IMAGE ABOVE  
Novara Interior/Exterior  
Floor Plan 4553 (pictured right)

IMAGE LEFT A  
a. Furniture b. Accent Fabric  
c. Accent Fabric d. Carpet e. Counter Top

IMAGE LEFT B  
Sable Maple Cabinetry

Essex 4553 is a bath-and-a-half floor plan that features a plush living area complete with a side-folding Hide-a-Bed sofa and 48" LED TV on a retractable Televator. In the kitchen, you will find a large 19.7 cu.ft. residential refrigerator.



## KING AIRE

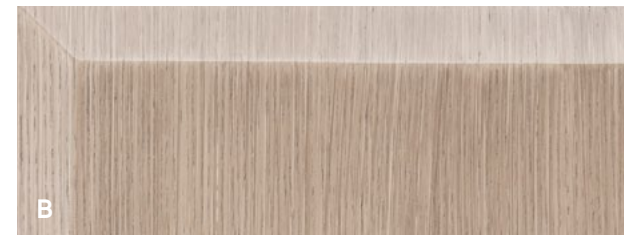
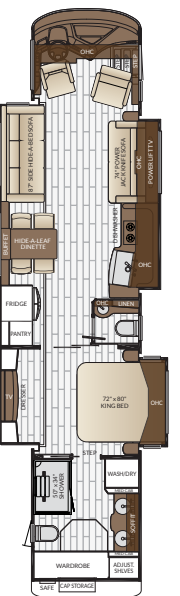
*luxury motor coach*

IMAGE ABOVE  
Dover Interior/Exterior  
Floor Plan 4519 (pictured right)

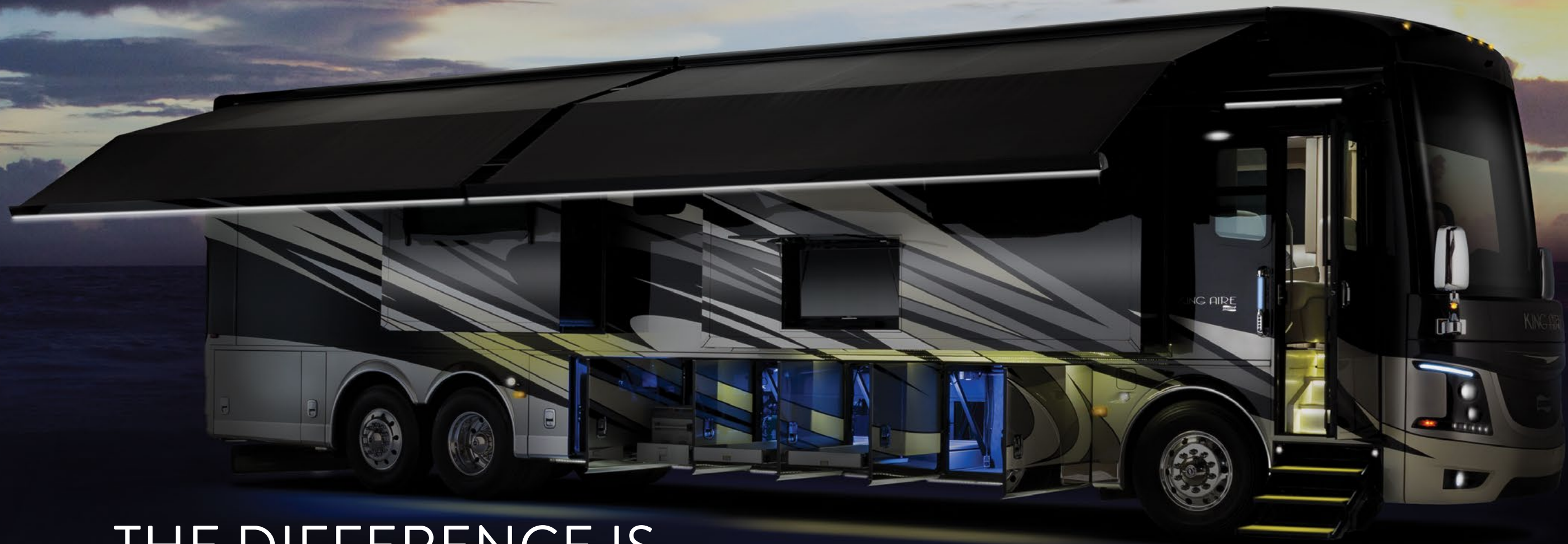
IMAGE LEFT A  
a. Furniture b. Accent Fabric  
c. Accent Fabric d. Carpet e. Counter Top

IMAGE LEFT B  
Havana Rift Oak Cabinetry

King Aire 4519 is a bath-and-a-half floor plan loaded with amenities. The living area features a 49" UHD LED TV on a retractable Televator, while the kitchen boasts a dishwasher and a new apron-front kitchen sink.







THE DIFFERENCE IS  
IN THE *details*

2017 KING AIRE

### INTRODUCING THE 2017 NEWMAR LINEUP

Led by the redesigned King Aire, the 2017 Newmar lineup is better where it counts. Forty percent of all floor plans are new. And our Customer Quality Inspection is now twice as thorough, for industry-leading fit and finish that makes other coaches feel like a compromise. Experience the difference for yourself at [NewmarCorp.com](http://NewmarCorp.com)



Bay Star Sport



Bay Star



Canyon Star



Ventana LE



Ventana



Dutch Star



Mountain Aire



London Aire



Essex



King Aire





# THE DIFFERENCE IS OUR PROCESS

The Newmar Difference is uncompromising quality. The result of over **one thousand** checks performed throughout our assembly process.

Experience it for yourself at [Tour.NewmarCorp.com](http://Tour.NewmarCorp.com)



WHEN YOU KNOW THE DIFFERENCE™