

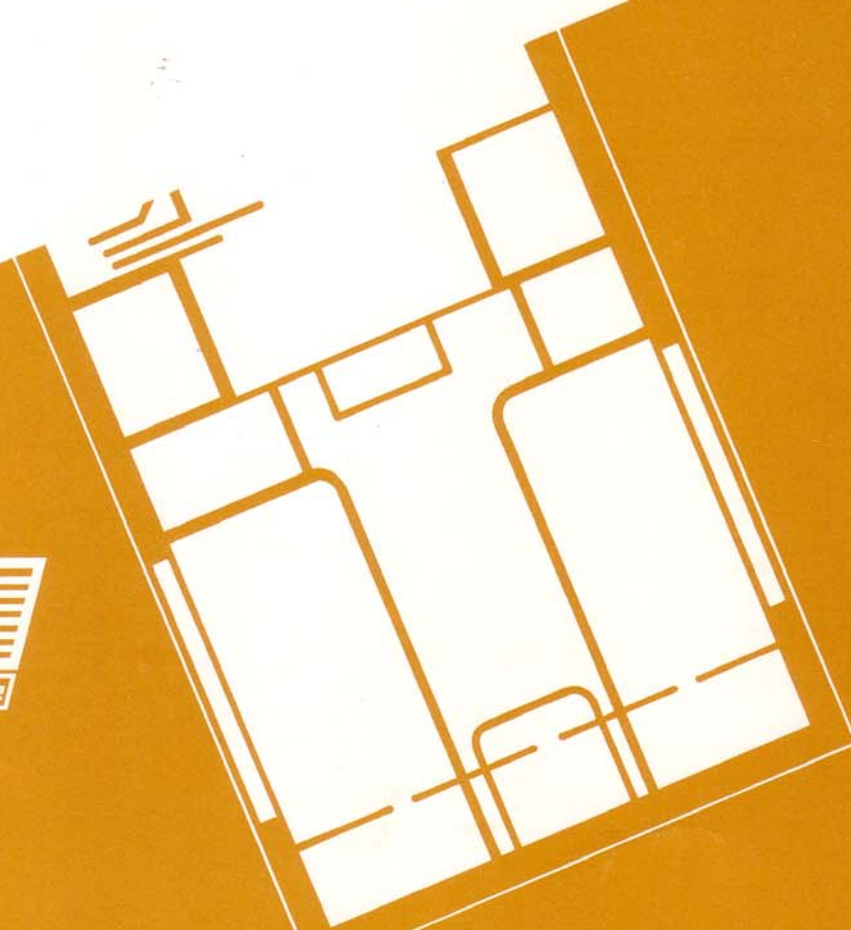
85

# FIFTH WHEELS



**Newmar Corporation**  
P. O. Box 30  
Nappanee, Indiana 46550  
(219) 773-7791

*by* **Kountry Aire**



Newmar Corporation, manufacturers of Travel Trailers,  
Fifth Wheels, Mini Homes, and Motorhomes.

# Kountry Lite

## TRAVEL TRAILERS



What makes the Kountry Lite Travel Trailer special? Two things: the outside and the inside.

Outside, it's obviously good looking, with clean lines and bold striping. Beyond that, it's precision engineered to let the air flow over and around it, thus reducing air drag — and your fuel consumption!

Inside, it's clearly beautiful. But it's also smart — in terms of design and function. Every detail, every niche is purposefully planned to allow you the best use of your space. Like a roomy kitchen featuring a slide-out pantry, four-burner range, lighted hood and vent, and generously proportioned refrigerator.

From any side, the Kountry Lite Travel Trailer is special — and you can make it specially yours when you select the floor plans, colors and options that suit just you.

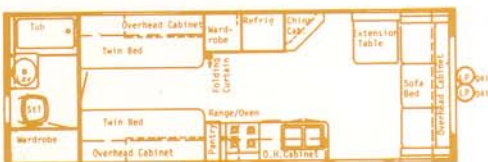
### The Kountry Lite switch is on!



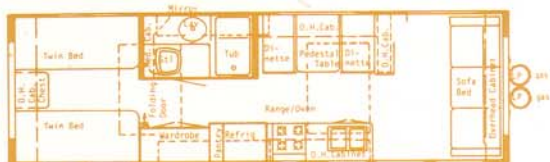
(1) 22 Rear Bath Dinette • Overall Length 22' 5"  
Approx. Hitch Weight 500 lbs. • Approx. Dry Weight 4100 lbs.



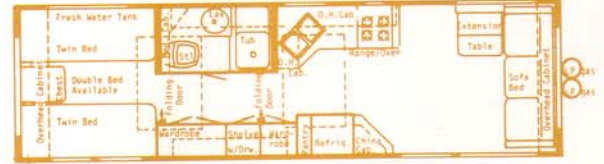
(2) 25 Center Bath Dinette • Overall Length 25' 5"  
Approx. Hitch Weight 650 lbs. • Approx. Dry Weight 4600 lbs.



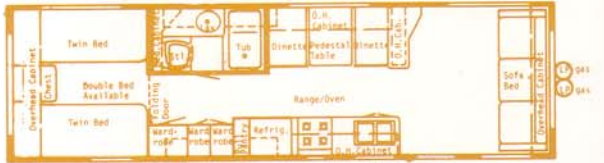
(3) 27 Rear Bath • Overall Length 27' 5"  
Approx. Hitch Weight 600 lbs. • Approx. Dry Weight 4900 lbs.



(4) 29 Center Bath Dinette • Overall Length 29' 5"  
Approx. Hitch Weight 600 lbs. • Approx. Dry Weight 5200 lbs.



(5) 31 Center Bath • Overall Length 31' 5"  
Approx. Hitch Weight 650 lbs. • Approx. Dry Weight 5600 lbs.



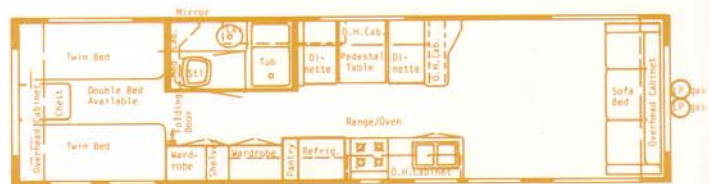
(6) 31 Center Bath Dinette • Overall Length 31' 5"  
Approx. Hitch Weight 650 lbs. • Approx. Dry Weight 5600 lbs.



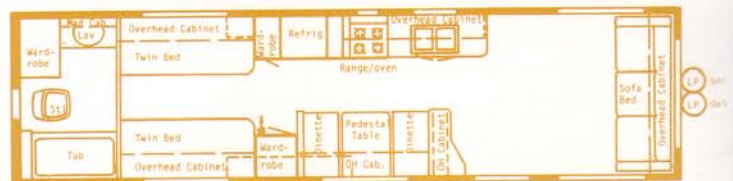
(7) 33 Center Bath Dinette • Overall Length 33' 5"  
Approx. Hitch Weight 700 lbs. • Approx. Dry Weight 5800 lbs.



(8) 33 Rear Bath Dinette • Overall Length 33' 5"  
Approx. Hitch Weight 700 lbs. • Approx. Dry Weight 5800 lbs.



(9) 35 Center Bath Dinette • Overall Length 34' 6"  
Approx. Hitch Weight 750 lbs. • Approx. Dry Weight 5900 lbs.



(10) 35 Rear Bath Dinette • Overall Length 34' 6"  
Approx. Hitch Weight 750 lbs. • Approx. Dry Weight 5900 lbs.



# FIFTH WHEELS



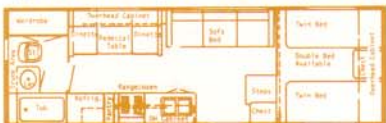
The Kountry Lite Fifth Wheel is the go-anywhere, do-anything Fifth Wheel! Versatility is built right into every Kountry Lite, along with plenty of other standard features. Like the comfortable dinette with back bar for extra serving space. A handy porch light with an indoor switch. And roomy exterior storage compartments. These are just a few of the details we've included to suit you and your vacation needs.

Whether it's just you, or a full crew of family or friends, the Kountry Lite Fifth Wheel can accommodate you all, spaciouly and in style. Choose from many thoughtfully laid-out floor plans; pick out a color package that's you. Then, get up and go!

## The Kountry Lite switch is on!



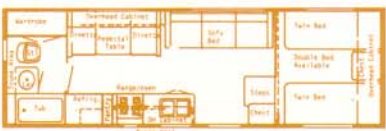
(1) 23 Front Bath Dinette • Overall Length 23' 3"  
Approx. Hitch Weight 1050 lbs. • Approx. Dry Weight 4900 lbs.



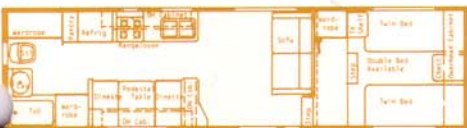
(2) 26 Rear Bath Dinette • Overall Length 23' 3"  
Approx. Hitch Weight 1050 lbs. • Approx. Dry Weight 4900 lbs.



(3) 26 Front Bath Twin Lounge • Overall Length 26' 3"  
Approx. Hitch Weight 1150 lbs. • Approx. Dry Weight 5200 lbs.



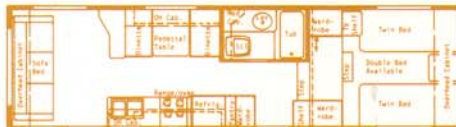
(4) 26 Rear Bath Dinette • Overall Length 26' 3"  
Approx. Hitch Weight 1150 lbs. • Approx. Dry Weight 5200 lbs.



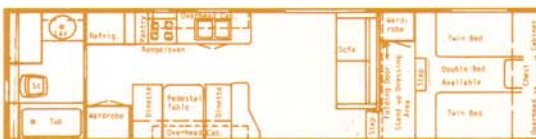
(5) 29 Rear Bath Dinette • Overall Length 30' 4"  
Approx. Hitch Weight 1000 lbs. • Approx. Dry Weight 6000 lbs.



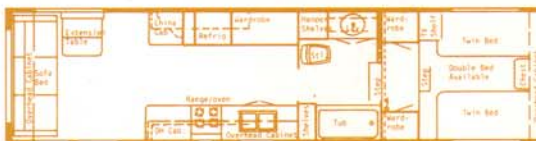
(6) 29 Walk Thru Dinette • Overall Length 30' 4"  
Approx. Hitch Weight 1200 lbs. • Approx. Dry Weight 6000 lbs.



(7) 29 Front Bath Door Side Kitchen • Overall Length 30' 4"  
Approx. Hitch Weight 1200 lbs. • Approx. Dry Weight 6000 lbs.



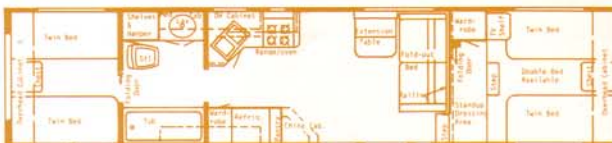
(8) 32 Rear Bath Dinette • Overall Length 32' 6"  
Approx. Hitch Weight 1400 lbs. • Approx. Dry Weight 6200 lbs.



(9) 32 Walk Thru Front Bath • Overall Length 32' 6"  
Approx. Hitch Weight 1300 lbs. • Approx. Dry Weight 6350 lbs.



(10) 32 Walk Thru Dinette • Overall Length 32' 6"  
Approx. Hitch Weight 1300 lbs. • Approx. Dry Weight 6350 lbs.



(11) 35 Center Bath Walk Thru • Overall Length 35' 6"  
Approx. Hitch Weight 1400 lbs. • Approx. Dry Weight 6500 lbs.

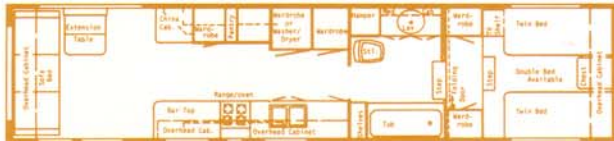


(12) 35 Front Bath Doorside Kitchen • Overall Length 35' 6"  
Approx. Hitch Weight 1500 lbs. • Approx. Dry Weight 6700 lbs.





(13) 35 Rear Bath Dinette • Overall Length 35' 6"  
Approx. Hitch Weight 1400 lbs. • Approx. Dry Weight 6500 lbs.



(14) 35 Walk Thru Front Bath • Overall Length 35' 6"  
Approx. Hitch Weight 1500 lbs. • Approx. Dry Weight 6700 lbs.



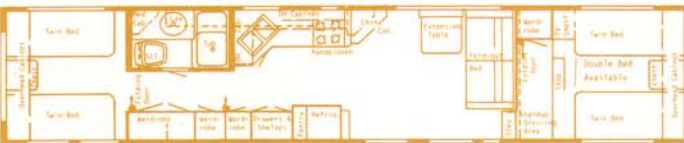
(15) 35 Walk Thru Dinette • Overall Length 35' 6"  
Approx. Hitch Weight 1500 lbs. • Approx. Dry Weight 6700 lbs.



(16) 35 Walk Thru Raised Floor • Overall Length 35' 6"  
Approx. Hitch Weight 1500 lbs. • Approx. Dry Weight 7000 lbs.



(17) 35 Walk Thru Raised Floor Dinette • Overall Length 35' 6"  
Approx. Hitch Weight 1500 lbs. • Approx. Dry Weight 7000 lbs.



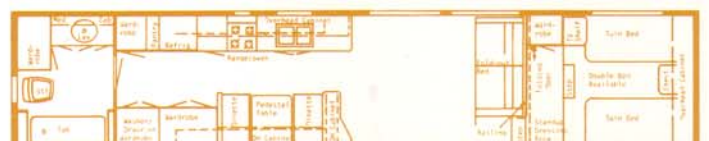
(18) 40 Center Bath • Overall Length 39' 6"  
Approx. Hitch Weight 1500 lbs. • Approx. Dry Weight 7500 lbs.



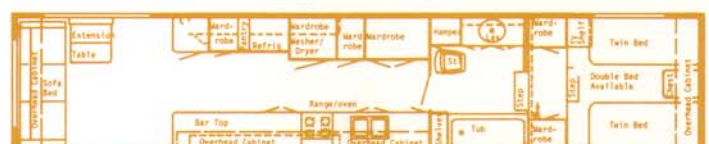
(19) 40 Center Bath Walk Thru • Overall Length 39' 6"  
Approx. Hitch Weight 1500 lbs. • Approx. Dry Weight 7500 lbs.



(20) 40 Front Bath Doorside Kitchen • Overall Length 39' 6"  
Approx. Hitch Weight 1500 lbs. • Approx. Dry Weight 7700 lbs.



(21) 40 Rear Bath Dinette • Overall Length 39' 6"  
Approx. Hitch Weight 1500 lbs. • Approx. Dry Weight 7500 lbs.



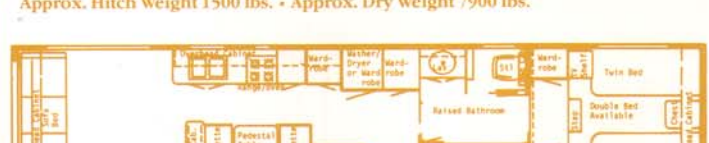
(22) 40 Walk Thru Front Bath • Overall Length 39' 6"  
Approx. Hitch Weight 1500 lbs. • Approx. Dry Weight 7700 lbs.



(23) 40 Walk Thru Dinette • Overall Length 39' 6"  
Approx. Hitch Weight 1500 lbs. • Approx. Dry Weight 7700 lbs.



(24) 40 Walk Thru Raised Floor • Overall Length 39' 6"  
Approx. Hitch Weight 1500 lbs. • Approx. Dry Weight 7900 lbs.



(25) 40 Walk Thru Raised Floor Dinette • Overall Length 39' 6"  
Approx. Hitch Weight 1500 lbs. • Approx. Dry Weight 7900 lbs.



# STANDARD AND OPTIONAL FEATURES TOWABLES

## A. AIR CONDITIONING, GAS & HEATING

Electronic Ignit. Furnace 25M (20'-24' Units)	1	S
Electronic Ignit. Furnace 32M (25'-30' Units)	2	S
Electronic Ignit. Furnace 35M (31'-35' Units)	3	S
Electronic Ignit. Furnace 41M (36'-40' Units)	4	S
Next Size Larger Furnace in Lieu of Standard	5	O
2-20#Steel LP Gas Bottles w/Manual Regulator	6	S
2-30#Steel LP Gas Bottles w/Automatic Regulator	7	O
2-40#Steel LP Gas Bottles w/Automatic Regulator	8	O
Rosan® LP Leak Detector	9	O
Wire for Air Conditioner (1 only)	10	S
Wire for Extra Air Conditioner	11	O
13.5 Coleman® Air Conditioner	12	O
Heat Strip for Air Conditioner	13	O
Under Floor Ducted Heat	14	S

## B. APPLIANCES

RV106 Sibir® Refrigerator 2-Way	1	S
RV108 Sibir® Refrigerator 2-Way	2	O
Dometic® Refrigerator in Lieu of Std. (comp. size)		
Model 763 3-Way AES	3	O
Model 1303 3-Way AES	4	O
Range Hood w/Light & Fan	5	S
18" 4-Burner Range w/Oven, Top Pilot	6	S
Bi-fold Range Cover	7	O
Microwave Oven	8	O
Microwave Prep 16"H x 21 1/2"W x 13 1/2"D	9	O
Double Stainless Steel Sink	10	S
Laminated Sink Cover (1 only)	11	S
Double Handle Mixing Faucet	12	S
6 Gallon Gas Water Heater	13	S
6 Gal. Gas Water Heater w/Elec. Ign. in Lieu of Std.	14	O
10 Gal. Gas/Electric Water Heater in Lieu of Std.	15	O
Large Lavatory Sink	16	S
Tub/Shower Combination	17	S
Full Fiberglass Bathtub and Door	18	O
Portable Vacuum System	19	O
Washer & Dryer Prep (incl. plumbing, elect. recept)	20	O
Washer & Dryer	21	O

## C. AWNINGS, DOORS, VENTS & WINDOWS

36" x 42" Picture Window at Dinette	1	S
Square Torque Regular Glass Window (Hehr®)	2	S
22'-32" TT & FW-Radius Tinted Torque Safety Glass (Must Option in New Jersey) (Hehr®)	3	O
33'-40" TT & FW-Radius Tinted Torque Safety Glass (Must Option in New Jersey) (Hehr®)	4	O
36" x 48" Picture Window - Radius Only (each)	5	O
48" x 36" Picture Window - Radius Only (each)	6	O
48" x 48" Picture Window - Radius Only (each)	7	O
48" x 36" Picture Window - Square (each)	8	O
48" x 30" Picture Window - Radius Only (each)	9	O
Power Roof Vent in Bath Area w/Wall Switch	10	S
Non-Power Roof Vent in A/C Location	11	S
Roof Vent	12	O
Power Roof Vent	13	O
26" Entrance Door w/Screen	14	S
Front Travel Awning (Travel Trailers)	15	S
Rear Travel Awning	16	O
Carter® Side Awning	17	O
Center Support for Side Awning	18	O
Front Window & Awning (Fifth Wheels)	19	O
Grab Handle	20	S
Vinyl Folding Door	21	S
Wood Folding Door in Lieu of Vinyl Door	22	O
Extra Vinyl Folding Door	23	O
Dead Bolt Lock (each)	24	O
Door Bell	25	O

## D. CABINETS & FURNITURE

Dinette w/Pedestal Table (Except in 27' RB & 31' CB TT; 23' FB, 26' FB, 35' CBWT, 35' WTFB, 35' WTRF, 40' CB, 40' CBWT, 40' WTFB, 40' WTRF FW)	1	S
Twin or Double Bed	2	S
Free Standing Sleeper Sofa (see floor plans)	3	S
Wall Mount Table (27' RB & 31' CB TT; 23' FB, 26' FB, 35' CBWT, 35' WTFB, 35' WTRF, 40' CB, 40' CBWT, 40' WTFB, 40' WTRF FW)	4	S
Cabinet Bunk w/Poly Foam Mattress, 32"	5	O
Stationary Bunk w/Poly Foam Mattress, 32"	6	O
Queen Bed	7	O
Fitted Sheets for Twin, Double & Queen Beds	8	O
Clothes Hamper (CB & FB Models only)	9	S
Medicine Cabinet	10	S
Night Stand (1 for TB; 2 for DBL)	11	S
Decorative Headboards	12	S
Rocker Chair	13	O
Pedestal Chair	14	O
Access Doors under Dinette	15	O
Hi-Lo Table	16	O
Counter Top Extension	17	O
Extra Overhead Cabinet (each)	18	O
Omit Dinette and Install Table Height Bar	19	O
Extra Wardrobe at Door Side w/Angle Lower TV Cabinet (RB & CB FW only) (#131)	20	O
Omit Front Door and Install Wardrobe (WT FW only) (#151)	21	O
Wall Mount Table (extra)	22	O
Drop Cabinet Top to Bar Level (32' WTFB)	23	O

Party Package - Omit Door Side Loungette.  
Add 2 Pedestal Chairs, Small Pedestal Table &  
a 36" x 48" Bay Window (26' FBTL)

24 O

## E. ELECTRICAL & LIGHTING EQUIPMENT

Wire for Stereo	1	S
AM/FM Stereo w/Cassette, Clock & 4 Speakers	2	O
TV Antenna w/2 Jacks	3	O
Hook Up for Cable TV	4	O
Radio Antenna w/4 Speakers	5	O
1-110v GFI Recept Interior	6	S
Exterior Recept	7	S
Porch Light w/Inside Switch	8	S
1-80 AMP Battery	9	S
1-85 AMP Deep Cycle Battery	10	O
40 AMP Converter w/Charger	11	S
30 AMP Service	12	S
50 AMP Service	13	O
Fire Extinguisher 5 BC	14	S
Fire Extinguisher 10 BC	15	O
Smoke Detector	16	S
Monitor Panel	17	O
Battery Clock	18	O
Exterior Security Lights (4)	19	O
Intercom	20	O
Wire for Telephone	21	O

## F. INTERIORS

Vinyl Floor Covering	1	S
Carpet w/Pad in Bedroom & Living Room	2	S
Carpet w/Pad (per ft.)	3	O
3/16" Pecan Paneling	4	S
Wainscoting in Living Room	5	S
Wood Grain Paneling in Lieu of Wainscoting	6	O
12" Raised Roof Option (Fifth Wheels)	7	O
Decorative Panels in Bath	8	S
Light Color Paneling in Bedroom	9	S
Textured Roller Shades w/Correlating Tie Back Draperies & Matching Valances	10	S
Kountry Aire Herculon Fabric Package (5-4 & 5-5) (Includes Upholstery, Drapes in Living Area & Carpet)	11	O
Bedsprad Queen	12	O
Bedsprad Double	13	O
Bedsprad Twins	14	O

## G. WATER SYSTEMS

Air Accumulator Tank	1	S
Demand Water System	2	S
City Water Hook-Up	3	S
35 Gallon Grey Water Tank	4	S
35 Gallon Sewage Waste Holding Tank	5	S
Fresh Water Tanks		
Travel Trailers:		
22 RBD 27 Gallon	6	S
25 CBD, 27 RB 31 Gallon	7	S
29 CBD, 31 CB, 31 CBD, 33 CBD, 33 RBD, 35 CBD, 35 RBD 56 Gallon	8	S
Fifth Wheels:		
23 FBD, 23 RBD, 26 FBTL, 26 RBD, 29 RBD 29 WTD, 29 FBTK 31 Gallon	9	S
35 WTRF, 35 WRFD, 40 WTRF, 40 WRFD 35 Gal. 32 RBD, 32 WTFB, 32 WTD, 35 FBTK, 35 RBD, 40 FBTK 45 Gallon	10	S
35 CBWT, 35 WTFB, 35 WTD, 40 CB, 40 CBWT, 40 RBD, 40 WTFB, 40 WTD 56 Gallon	11	S

## H. EXTERIOR

Exterior Storage Compartments (Doors, no Slide Outs)	1	S
Bumper Cover	2	O
Roof Rack & Split Ladder	3	O
Roof Storage Pod 21 cu. ft.	4	O
Roof Storage Pod 10 cu. ft.	5	O

## I. RUNNING GEAR & CONSTRUCTION

Aluminum Structure (16" Centers)	1	S
Frame size 8" I-Beam	2	S
10" Electric Brake	3	S
Shock Absorbers	4	S
14" Wheels	5	S
15" Wheel (each)	6	O
F78 x 14 Load Range C Tires	7	S
8.55 Load Range C - White Walls (each)	8	O
Spare Tire & Wheel	9	O
Spare Tire Carrier	10	O
Spare Tire Cover	11	O
Fiberglass Insulation Sidewalls & Roof	12	S
Fiberglass Insulation in Floor	13	S
Laminated 5/8" Foam Insulation Sidewalls & Roof	14	S
Enclosed Underbelly w/Laminated 5/8" Foam	15	S
Fome-Cor® Insulation Exterior Sidewalls & Roof	16	O
Double Entrance Step	17	S
Double 1/2" Plywood Floor	18	S
Power Hitch Jack (Travel Trailers)	19	O
Power Hitch Jacks (Fifth Wheels)	20	O
48" or 54" Fifth Wheel Hitch Plate & Bracket	21	O
Install Fifth Wheel Hitch	22	O
Stabilizer Jacks (set of 2)	23	O
Wire for Power Jack	24	O
Mor-Ryde® Suspension	25	O

## J. MISCELLANEOUS

Customer Pick Up	1	O
------------------	---	---



## MINI HOMES

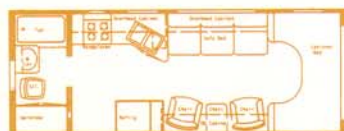


Introducing the newest member of the Kountry Lite line: the Kountry Lite Mini Home. And a mini home it is! With standard features like wall-to-wall carpeting, an am/fm stereo cassette with four speakers, and a four-burner range, you'll feel as though you never left home. So many floorplans and stylish decor packages, you're sure to find the traveling home of your dreams!

And, the exterior is just as exciting! Aerodynamic design and aluminum structure, characteristic to the Kountry Lite line, means improved fuel consumption. Large tinted windows and attractive striping makes a lasting impression on passers-by, and lets you ride with pride.

Kountry Lite proven quality and comfort – now available in a mini home. A bright new idea!

### The Kountry Lite switch is on!



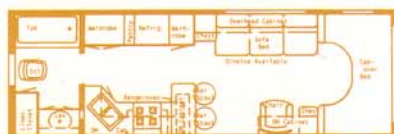
(1) 24 Rear Bath Rear Door • Overall Length 24' 4"



(2) 26 Rear Bath Rear Door • Overall Length 26' 9"



(3) 26 Rear Bath Double Bed • Overall Length 26' 9"



(4) 26 Rear Bath Bar • Overall Length 26' 9"



OPTION B



OPTION B

## CLASS A MOTOR HOMES

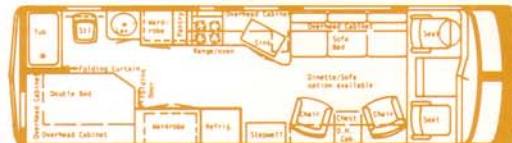
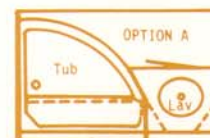


Welcome the newest member of the Kountry Lite family: the Class A Motorhome. All the comforts of home on wheels! Large double bed, complete kitchen facilities and lots of closet space are only a few of this beauty's standard features.

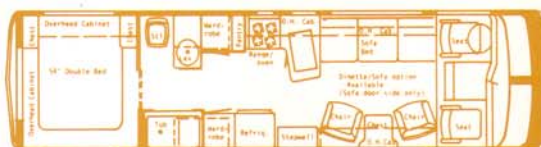
Aluminum frame structure and aerodynamic design allows superb handling on the road. The Kountry Lite Class A is *the* motorhome that you'll want to take everywhere!

Choose one of the five great floorplans that fits your needs! And there are lots of tasteful decor packages to make your Kountry Lite Motorhome *yours*! Kountry Lite Class A Motorhome – top-flight travel that's also affordable.

### The Kountry Lite switch is on!



(1) 28 Rear Bath Dinette



(2) 30 Center Bath Dinette



(3) 33 Center Bath Dinette • Overall Length 34' 3"



(4) 33 Rear Bath Dinette



(5) 35 Center Bath Dinette • Overall Length 35' 3"



# STANDARD AND OPTIONAL FEATURES MOTORIZED

## A. AIR CONDITIONING, GAS & HEATING

Electronic Ignit. Furnace 25M (20'-24' Units)	1	S
Electronic Ignit. Furnace 32M (25'-30' Units)	2	S
Electronic Ignit. Furnace 35M (31'-35' Units)	3	S
Next Size Larger Furnace in Lieu of Standard	4	O
Wire for Air Conditioner (1 only)	5	S
Wire for Extra Air Conditioner	6	O
13.5 Coleman® Air Conditioner	7	O
Heat Strip for Air Conditioner	8	O
15 Gal. LP Gas Tank	9	S
Under Floor Ducted Heat	10	S

## B. APPLIANCES

RV106 Sibir® Refrigerator 2-Way	1	S
RV108 Sibir® Refrigerator 2-Way	2	O
Dometic® Refrigerator in Lieu of Std. (comp. size)		
Model 763 3-Way AES	3	O
Model 1303 3-Way AES	4	O
Range Hood w/Light & Fan	5	S
18" 4-Burner Range w/Oven, Top Pilot	6	S
Bi-fold Range Cover	7	O
Microwave Oven	8	O
Microwave Prep 16"H x 21 1/8"W x 13 1/2"D	9	O
Ice Maker	10	O
Double Stainless Steel Sink	11	S
Laminated Sink Cover (1 only)	12	S
Double Handle Mixing Faucet	13	S
6 Gallon Gas Water Heater	14	S
6 Gal. Gas Water Heater w/Elec. Ign.	15	O
Portable Vacuum System	16	O
Portable Gas Grill	17	O
Large Lavatory Sink	18	S
Fiberglass Tub/Shower Combination w/Curtain	19	S

## C. AWNINGS, DOORS, VENTS & WINDOWS

26" Entrance Door w/Flush Mounted Latch & Dead Bolt Lock	1	S
Door Bell	2	O
Driver Side Door (Class A)	3	O
Radius Tinted Slider Safety Glass Windows (Hehr®)	4	S
Power Roof Vent in Bath Area	5	S
Non-Power Roof Vent in Front A/C Location	6	S
Roof Vent	7	O
Power Roof Vent	8	O
Grab Handle	9	S
Vinyl Folding Door Where Applicable	10	S
Extra Vinyl Folding Door	11	O
Wood Folding Door in Lieu of Vinyl Door	12	O
Carter Side Awning	13	O
Center Support for Side Awning	14	O

## D. CABINETS & FURNITURE

Twin or Double Bed	1	S
Cabinet Bunk w/Poly Foam Mattress, 32"	2	O
Stationary Bunk w/Poly Foam Mattress, 32"	3	O
Queen Bed (35' Class A)	4	O
Fitted Sheets for Twin, Double & Queen Beds	5	O
Medicine Cabinet	7	S
Dinette w/Pedestal Table & Picture Window	8	S
Access Doors under Dinette	9	O
Omit Dinette and Install Table Height Bar	10	O
Night Stand (1 for TB; 2 for DBL)	11	S
Decorative Headboards	12	S
Counter Top Extension	13	O
Snack Table on Engine Cover	14	O

## E. ELECTRICAL & LIGHTING EQUIPMENT

AM/FM Stereo w/Cassette, Clock & 4 Speakers	1	S
CB Radio w/Antenna	2	O
Color TV AC/DC (Built in — Class A)	3	O
TV Antenna w/Two Jacks	4	O
Hook Up for Cable TV	5	O
1 - 110v GFI Interior Recept	6	S
Exterior Recept	7	S
Porch Light w/Inside Switch	8	S
1 - 80 AMP Battery	9	S
1 - 85 AMP Deep Cycle Battery	10	O
40 AMP Converter w/Charger	11	S
30 AMP Service	12	S
70 AMP Chassis Battery	13	S
Battery Isolator	14	S
Fire Extinguisher 5 BC	15	S

Fire Extinguisher 10 BC	16	O
Smoke Detector	17	S
Monitor Panel	18	O
Battery Clock	19	O
Wire for Telephone	20	O
Single Automatic Electric Step	21	S
Double Automatic Electric Step	22	O
Generator Prep (Wire & Door Only)	23	O
4.0 k.w. Onan® Generator (Mini)	24	O
6.5 k.w. Onan® Generator Set w/2 Start Switches (Class A)	25	O
Remote Controlled Roof Spot Light (Class A)	26	O

## F. INTERIORS

Carpet w/Pad	1	S
Light Textured Decorative Paneling Throughout	2	S
3/16" Pecan Paneling Throughout in Lieu of Std.	3	O
Textured Roller Shades w/Correlating Tie Back Draperies & Matching Valances	4	S
Kountry Aire Herculan® Fabric Package (5-4 & 5-5) (Includes Upholstery, Drapes in Living Area & Carpet)	5	O
Cushioned Entrance Door Header	6	S
Bedspread Queen	7	O
Bedspread Double	8	O
Bedspread Twins	9	O

## G. WATER SYSTEMS

Air Accumulator Tank	1	S
Demand Water System	2	S
City Water Hook-Up	3	S
Grey Water Tank	4	S
Mini Homes:		
24 RBRD, 26 RBRB, 26 RBB 26 Gallon	5	S
26 RBDB 36 Gallon	6	S
Class A's:		
33 CB, 35 CB 39 Gallon	7	S
Sewage Waste Holding Tanks		
Mini Homes:		
26 RBDB 26 Gallons	8	S
24 RBRD, 26 RBRD, 26 RBB 36 Gallon	9	S
Class A's:		
33 CB, 35 CB 55 Gallon	10	S
Fresh Water Tanks		
Mini Homes:		
24 RBRD, 26 RBRD, 26 RBDB, 26 RBB 32 Gallon	11	S
Class A's:		
33 CB, 35 CB 56 Gallon	12	S

## H. EXTERIOR

Exterior Mirrors	1	S
Stainless Steel Bumpers - Front & Rear (Class A)	2	S
Exterior Storage Compartments	3	S
Exterior Storage Slide Out Drawer in Lieu of Std.	4	O
Roof Storage Pod 21 cu. ft.	5	O
Roof Storage Pod 10 cu. ft.	6	O
Roof Rack & Ladder	7	O
Hitch for Towing Car w/Wire Connector	8	O

## I. RUNNING GEAR & CONSTRUCTION

Aluminum Structure (16" Centers)	1	S
Shock Absorbers	2	S
4-Way Shocks on Front (Class A)	3	O
Fiberglass Insulation Sidewalls, Roof & Floor	4	S
Laminated Foam Insulation Sidewalls & Roof	5	S
Fome-Cor® Insulation Exterior Sidewalls & Roof	6	O
Double 1/2" Plywood Floor	7	S
Spare Tire, Wheel & Carrier	8	O
Wire Style Wheel Covers	9	O
Mud Flaps (front & rear)	10	O
Automatic Hydraulic Leveling Jacks (Class A)	11	O
Dual Fuel Conversion (Except for CA units)	12	O
w/41 Gal. LP Tank (Mini) 65 Gal. LP Tank (Class A)		

## J. CHASSIS FEATURES

Automatic Transmission	1	S
Power Steering	2	S
Power Brakes	3	S
High Output Heater/Air Conditioner	4	S
Cruise Control	5	O
6-Way Power Driver Seat (Class A)	6	O
78 Gallon Gasoline Fuel Capacity (Class A)	7	S
41 Gallon Gasoline Fuel Capacity (Ford Mini)	8	S
36 Gallon Gasoline Fuel Capacity (Chevy Mini)	9	S

## K. MISCELLANEOUS

Customer Pick Up	1	O
------------------	---	---

**Newmar Corporation**

P. O. Box 30  
Nappanee, Indiana 46550

All weights shown are approximate.

All Kountry Lite features and options are not included. Your dealer has a complete list.

Each Kountry Lite meets all requirements of the RVIA, Recreational Vehicle Industry Association; the ANSI, American National Standard Institute; and state and federal codes.

Some features shown in the photographs are optional. Features and specifications are subject to change without prior notice.