



# AMERICAN

## Star

BY Newmar Corp. 



## 1987 RECREATIONAL VEHICLES

The American Star line of recreational vehicles — Travel Trailers, Fifth Wheels and Mini Homes — is a quality wooden framed line that affords American families everywhere the opportunity to enjoy one of America's fastest growing recreations, Camping. These fine RVs are so competitively priced, so attractive inside and out, so well put together and practical that we feel confident that more and more first-time buyers are going to think of Newmar Corporation's American Star line automatically when they are ready to purchase their first new recreational vehicle.

All American Star vehicles feature a full 91½" interior width and 6' 6" interior height in towables, with a full 7' interior height in the mini home. This means more space for your comfort and convenience. All American Stars offer standard: Solid oak doors • Genuine inlaid cane panels in kitchen/dining areas • Many popular floorplans and options as well as four beautiful interior decor packages. You'll also find standards like large double porcelain sinks, color-coordinated draperies and roller shades and smart exterior colors and graphics in designer beige and blues.



... Corporation has built its  
... with the competition and visit your nearest Kountry Aire dealer  
... and convenience don't have to cost more! When you purchase one of  
these g... onal ... quite certain the American Star won't be the only star in your family!!

## FEATURES THAT WILL BENEFIT YOUR FAMILY!

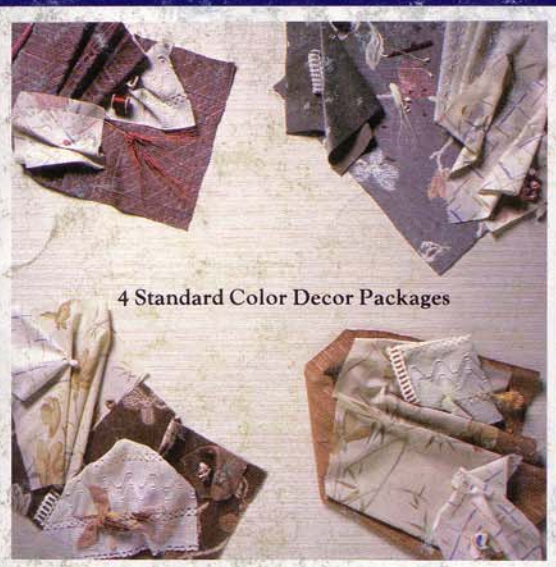
### EXTERIOR

- Std 26" Wide entrance doors for easier, safer entry & exit
- Std Grab handle for safer entry
- Std 24" Radiused entrance step
- Std Dual 20 lb. LP tanks with auto changeover (towables)
- Std 12-volt battery (in addition to chassis battery on motorized)
- Std Nightlight package
- Std R-5 insulation
- Std Travel awning (front - travel trailers only)
- Std Front utility light for convenience in checking or filling LP tanks or hitching up in nighttime conditions (towables)
- Std Designer beige exterior metal with blue colored graphics
- Std Color-keyed spoke wheels (towables)
- Std Chrome wheel covers (motorized)
- Std Whitewall tires
- Std Large rear exterior storage compartment

### INTERIOR

- Std Full 91½" interior width for more room and comfort
- Std 6'6" interior height for the tall stars in your family (towables)
- Std 7' interior height in mini homes
- Std Flex-O-Lator dinette seating
- Std Deluxe sleeper sofa and other quality furniture in residential styling and comfort
- Std Quality color-coordinated draperies and roller shades
- Std 4 beautiful color decor packs to choose from
- Std Long-lasting, easy-to-clean vinyl-clad oak and decorative paneling
- Std Solid oak doors (with genuine inlaid cane panels in kitchen/dining area)
- Std Large double porcelain sinks & matching porcelain oven/range
- Std Generous interior storage space and wardrobes
- Std Large pantry will accept all sizes and shapes of food containers
- Std Refrigerator and furnace with direct-start ignition
- Std Large picture windows (towables)
- Std Larger 54-gallon above-floor fresh-water tanks, utilizes entire capacity of water in tank (towables)
- Std No obstruction under sink — extra storage

Rose Quartz  
AS7-32



4 Standard Color Decor Packages

Mocha Chip  
AS7-35

Misty Pewter  
AS7-34

Peach Pearl  
AS7-33

**AMERICAN**  
*Star*

BY **Newmar Corp.**



Your nearest American Star Dealer:

Newmar Corporation  
P.O. Box 30 — 355 N. Delaware  
Nappanee, IN 46550-0030  
(219) 773-7791

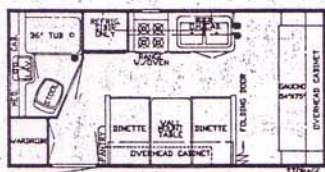




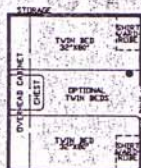
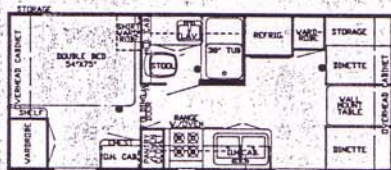
# AMERICAN Star BY Newmar Corp.

## 1987 TRAVEL TRAILERS

19' REAR BATH DINETTE

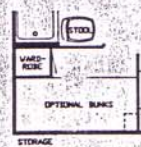
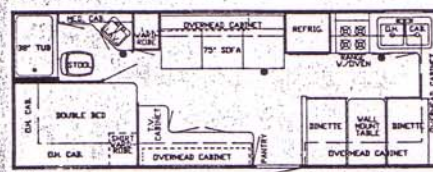


23' CENTER BATH DINETTE



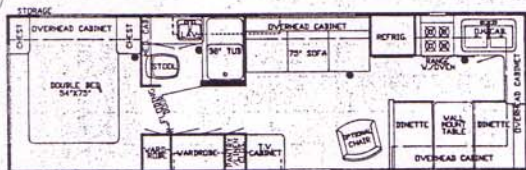
OPTION

25' FRONT KITCHEN DINETTE



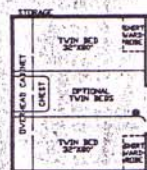
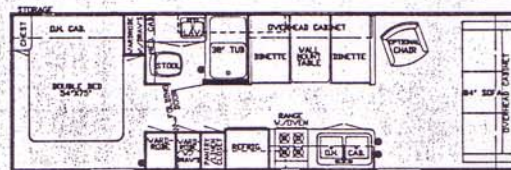
OPTION

29' FRONT KITCHEN DINETTE



OPTION

29' CENTER BATH DINETTE

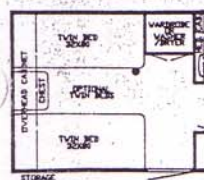
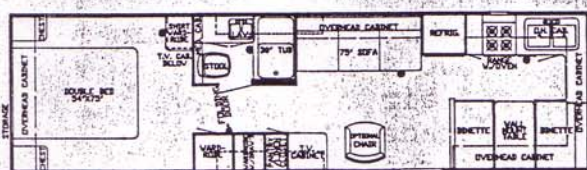


OPTION

33' CENTER BATH BUNK

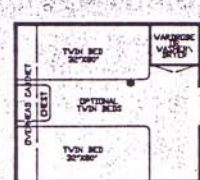
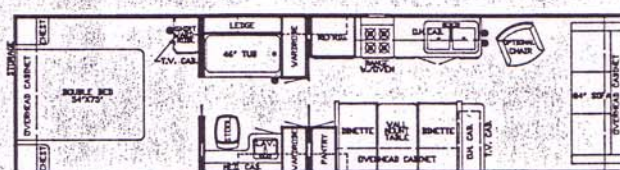


33' FRONT KITCHEN DINETTE



OPTION

35' CENTER BATH DINETTE



OPTION

BY **Newmar Corp.**

Newmar Corporation  
P.O. Box 30  
Nappanee, IN 46550-0030

PRICES AND SPECS ARE SUBJECT TO CHANGE WITHOUT WRITTEN  
NOTICE AT **NEWMAR'S** DISCRETION WITH NO OBLIGATION.



## ACCOMODATIONS

Flexilator Dinette \* Full Bath w/Tub Shower Combination

## GALLEY

Combination LP/Electric RV106 Refrigerator \* 4-Burner Range \* 12V Range Hood  
Light, Fan \* Porcelain Double Bowl Sink w/Cover \* Picture Window at Dinette  
(N/A on 23 CBD & 33 CBB) \* Pantry/Shelves w/Large front lip

## INTERIOR DECOR PACKAGES

Rose Quartz (AS7-32), Peach Pearl (AS7-33), Misty Pewter (AS7-34),  
Mocha Chip (AS7-35)

## HEATING/COOLING

Electronic Ignition, Duct Heat (19'-25' 19,500 BTU's, 29'-35' 25,000 BTU's)  
\* Roof Reinforced for Air Conditioner

## SELF-CONTAINMENT

54 Gal Polyethylene Fresh Water Tank (42 gal on 19 RBD) \* 26 gal Polyethylene  
Grey \* 40 gal Sewage Tank \* Demand Water System w/12V Pump \* City Water Hook Up

## ELECTRICAL

30 AMP 110V Service \* 40 AMP Converter w/charger \* 12v Incadescent Lights  
w/clear lens \* Exterior Recept \* Exterior Lights \* Wire for Stereo \* Wire for  
4 Speakers \* Wire for TV Antenna \* TV Jack \* Battery 80 AMP

## EXTERIOR

1 Piece Metal Roof \* 26" Exterior Door w/Window \* Standard Roof Vents w/Smoke  
Dome

## TIRES

5 x 15 Whitewall (8.55 x 15 - 35 CBD) \* Load Range "C"

DIMENSIONS	19 RBD	23 CBD	25 FKD	29 CBD	29 FKD	33 FKD	33 CBB	35 CBD
Gross Dry Weight (Approximate)	3430	3955	4290	4880	4920	5420	5420	5655
Hitch Dry Weight	*	*	*	510	*	*	*	*
Axle Dry Weight	*	*	*	4370	*	*	*	*
GVWR (Gross Vehicle Weight Rating)	*	*	*	6600	*	*	*	*
Height	106"	106"	106"	106"	106"	106"	106"	106"
Width	96"	96"	96"	96"	96"	96"	96"	96"
Length	19' 11"	23' 5"	25' 8"	29' 7"	30' 1"	33' 2"	33' 2"	34' 8"
Sleeping Accomodations	4	4	6	6	6	6	9	6

\* Not Available at time of printing

## POPULAR OPTIONS: TRAVEL TRAILER

Fome Cor Insulation

Dead Bolt Lock

30 lb. LP Bottles

L.P. Bottle Cover

Rear travel awning

Side Awning - A/E

Chrome bumper cover

Spare Tire/Carrier

fold range cover

tub surround

Bath decor package

Counter top extension

Occasional Chair

Cabinet Bunk

TV Antenna

Twin, Queen Beds

Bed Spreads, Double, Queen, Twin

Roof Air, 11,000 & 13,500 BTU

Heat strip for air

32,000 BTU furnace (29'-35')

8' Double door refer

Stabilizer Jacks (4)

Magic Chef Microwave

10 Gal. Gas/Elec Water Heater (29'-35')

Power roof vent

Power bath vent

Monitor panel

Am/Fm stereo - 12 volt

Antenna & 4 speakers

Extra TV Jack





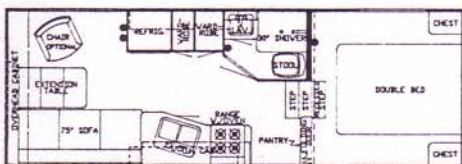
# AMERICAN

Star

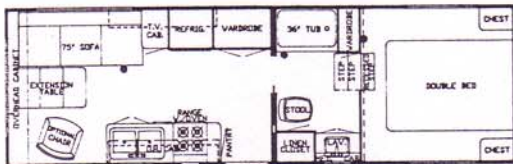
BY Newmar Corp.

## 1987 FIFTH WHEELS

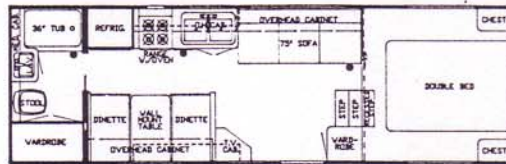
23' FRONT SIDE BATH



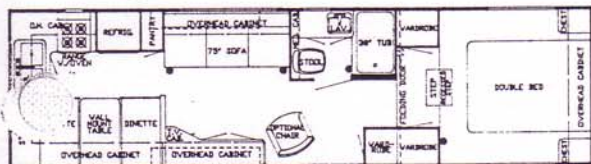
26' WALK THRU



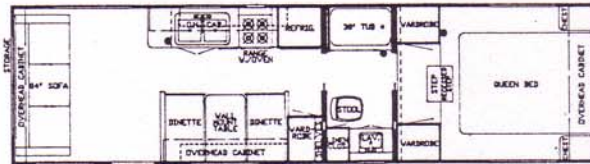
26' REAR BATH DINETTE



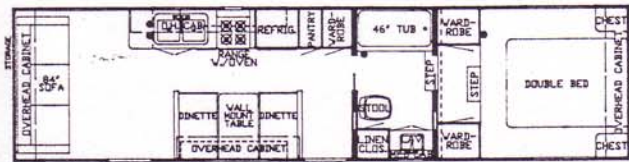
29' REAR KITCHEN DINETTE



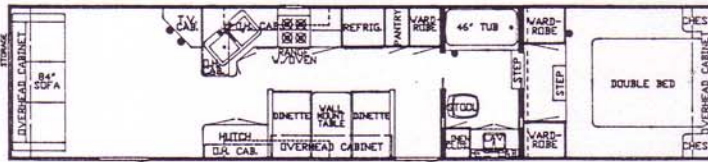
29' WALK THRU DINETTE



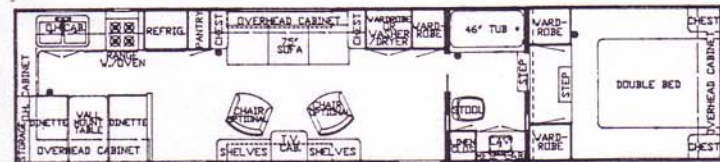
32' WALK THRU DINETTE



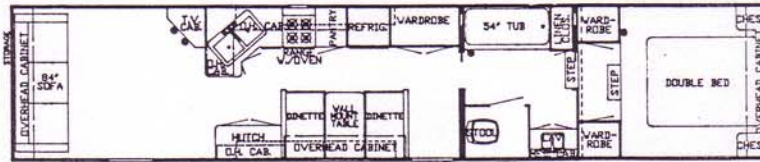
36' WALK THRU DINETTE



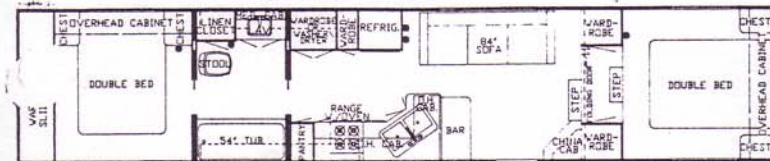
36' REAR KITCHEN DINETTE



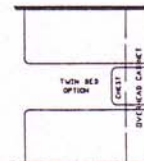
40' WALK THRU DINETTE



40' WALK THRU CENTER BATH



\* TWIN BEDS - OPTIONAL ON ANY FIFTH WHEEL



BY Newmar Corp.

Newmar Corporation  
P.O. Box 30  
Nappanee, IN 46550-0030

PRICES AND SPECS ARE SUBJECT TO CHANGE WITHOUT WRITTEN NOTICE AT NEWMAR'S DISCRETION WITH NO OBLIGATION.



## ACCOMODATIONS

Flexilator Dinette(N/A 23 FSB, 26 W, 26 RBD, 40 WCB) \* Full Bath w/Tub  
Shower Combination (N/A 23 FSB)

## CABIN

Combination LP/Electric RV106 Refrigerator \* 4-Burner Range \* 12V Range Hood  
w/Light, Fan \* Porcelain Double Bowl Sink w/Cover \* Picture Window at Dinette  
(N/A on 23 FSB & 40 WCB) \* Pantry/Shelves w/Large front lip

## INTERIOR DECOR PACKAGES

Rose Quartz (AS7-32), Peach Pearl (AS7-33), Misty Pewter (AS7-34),  
Mocha Chip (AS7-35)

## HEATING/COOLING

Electronic Ignition, Duct Heat (23'-26' 19,500 BTU's, 29'-40' 25,000 BTU's)  
\* Roof Reinforced for Air Conditioner

## SELF-CONTAINMENT

42 Gal Polyethylene Fresh Water Tank (47 Gal on 32 WD, 36 RKD, 36 WD, 40 WCB;  
31 Gal on WD) \* 26 Gal Polyethylene Grey, 40 Gal Sewage Tank,  
\* Demand Water System w/12V Pump \* City Water Hook Up

## ELECTRICAL

30 AMP 110V Service \* 40 AMP Converter w/charger \* 12v Incadescent Lights  
w/clear lens \* Exterior Recept \* Exterior Lights \* Wire for Stereo \* Wire for  
4 Speakers \* Wire for TV Antenna \* TV Jack \* Battery 80 AMP

## EXTERIOR

1 Piece Metal Roof \* 26" Exterior Door w/Window \* Standard Roof Vents w/Smoke  
Dome \* 2 x 2 Wood Frame, 16" OC \* 5/8" Plywood floor

## TIRES

7.75 x 15 Whitewall (8.55 x 15 - 36 RKD, 36 WD) \* Load Range "C"

DIMENSIONS	23 FSB	26 RB	26 WT	29 WD	29 RKD	32 WD	36 WD	36 RKD	40 WCB	40 WD
Gross Dry Weight (Appr)	4375	4750	4750	5600	5600	5760	6470	6470	6875	6875
Hitch Dry Weight	*	*	*	1225	1225	*	*	*	*	*
Axle Dry Weight	*	*	*	4375	4375	*	*	*	*	*
GVWR**	*	*	*	*	*	*	*	*	*	*
Height	116"	116"	116"	116"	116"	133"	133"	133"	133"	133"
Width	96"	96"	96"	96"	96"	96"	96"	96"	96"	96"
Length	23' 10"	26' 5"	26' 5"	29' 11"	29' 11"	32' 3"	36' 10"	36' 10"	39' 10"	39' 10"
Sleeping Accomodations	4	6	4	6	6	6	6	6	6	6

\* Not Available at time of printing

\*\*Gross Vehicle Weight Rating

## POPULAR OPTIONS: FIFTH WHEEL

Fome Cor Insulation  
Dead Bolt Lock  
30 lb. LP Bottles  
L.P. Bottle Cover  
Rear travel awning  
Side Awning - A/E  
Chrome bumper cover  
Snare Tire/Carrier  
Fold range cover  
Abs tub surround  
Bath decor package  
Counter top extension  
Occasional Chair  
Cabinet Bunk  
TV Antenna

Twin, Queen Beds  
Bed Spreads, Double, Queen, Twin  
Roof Air, 11,000 & 13,500 BTU  
Heat strip for air  
32,000 BTU furnace (29'-35')  
8' Double door refer  
Stabilizer Jacks  
Magic Chef Microwave  
10 Gal. Gas/Elec Water Heater (29'-35')  
Power roof vent  
Power bath vent  
Monitor panel  
Am/Fm stereo - 12 volt  
Antenna & 4 speakers  
Extra TV Jack  
Plate & Bracket



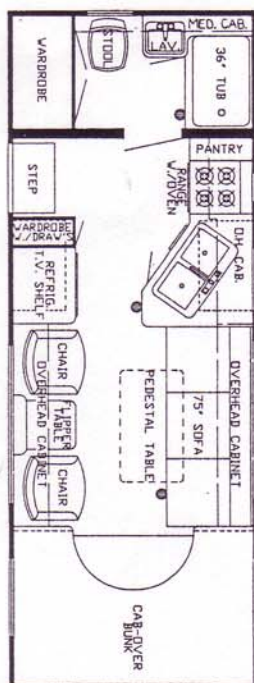


# AMERICAN Star

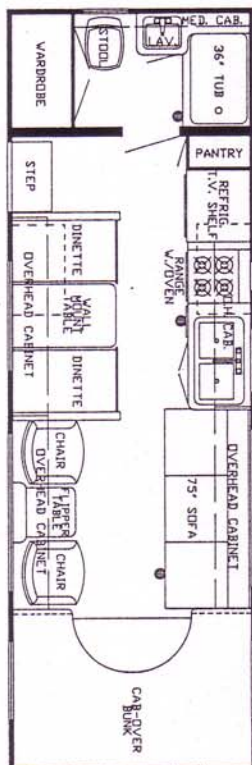
BY **Neumar Corp.**

## 1987 Mini-Homes

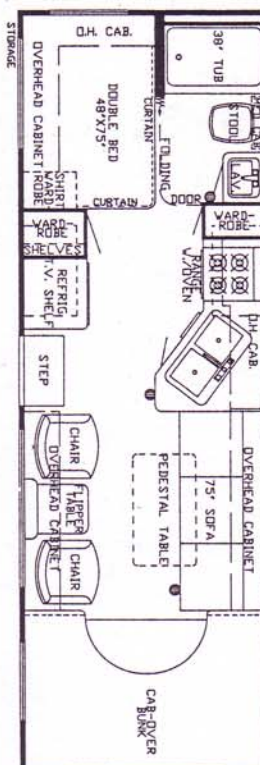
24 RB



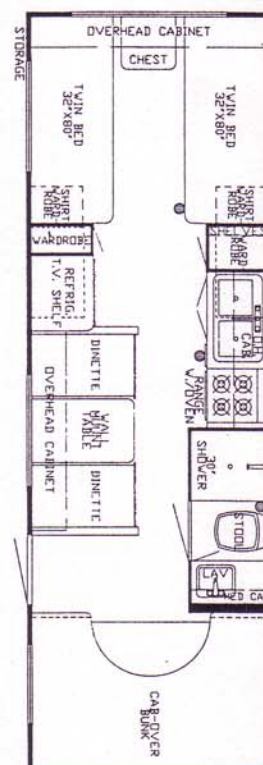
26 RBD



26 SB



26 FSB



### DIMENSIONS

Gross Dry Weight  
Front Axle Weight  
Rear Axle Weight  
Gvwr  
Interior/Exterior Height w/air  
Width  
Length  
Wheel Base  
Sleeping Accomodations

24 RB  
8,620  
3,140  
5,480  
10,500  
7' / 128"  
96"  
24' 1"  
146  
4

26 RBD  
\*9,600  
\*3,600  
\*6,000  
10,500  
7' / 128"  
96"  
26' 5"  
179  
6

26 SB  
9,630  
3,700  
5,930  
10,500  
7' / 128"  
96"  
26' 5"  
179  
6

26 FSB  
\*9,600  
\*3,600  
\*6,000  
10,500  
7' / 128"  
96"  
26' 5"  
179"  
6

\*Approx Weights



Neumar Corporation  
P.O. Box 30  
Nappanee, IN 46550-0030

PRICES AND SPECS ARE SUBJECT TO CHANGE WITHOUT WRITTEN  
NOTICE AT NEUMARS DISCRETION WITH NO OBLIGATION.



# AMERICAN STAR MINI HOMES STANDARD EQUIPMENT

## CONDITIONING, HEATING & LP GAS

Air Conditioning Prep \* Heat Ducted \* Furnace 19.5M Electronic Ignition (24'-26") \* LP Gas Tank 15 Gal.

## APPLIANCES & ACCESSORIES

Sink Porcelain (Bone) \* Lavatory Sink Rectangular (Bone) \* Sink Cover Laminated - 1 \* ABS Tub/Shower w/Curtain (Bone) \* Microwave Prep 15 1/2" h x 22 1/4" w \* Range 4-Burner 16" w/Top Pilot/Oven Porcelain \* Range Hood w/Light & Fan \* Refrigerator Sibir RV 106 2-way \*

## CABINETS & FURNITURE

Bed Double (75") \* Headboards Decorative \* Sofa Bed \* Cabinet Medicine \* Cabinet Night Stand \* Cabinetry Radius Corner Wood Grain w/Hard Wood Frame Doors \* Catches Friction \* Doors under Dinette for Easy Access \* Drawer Roller Guides \* Spice Rack \* Dinette w/Flex-a-lator & Fabric Covered Ends \* Table Between Barrel Chairs

## CHASSIS FEATURES

Power Brakes \* Cruise Control \* Gasoline Fuel Capacity 35 Gal (Chevy), 42 Gal (Ford) \* Heater/Air Conditioner High Output Automotive \* Power Steering \* Tilt Steering Wheel \* Tinted Windshield \* Transmission Automatic

## ELECTRICAL & LIGHTING EQUIPMENT

Battery 80 AMP \* Battery Automotive \* Battery Isolator \* Converter 40 AMP w/Charger \* Electrical Service 30 AMP \* Generator Prep (wire & door) \* Lights Backup \* Light Exterior w/Inside Switch \* Lights Running Surface Mount \* Lighting 12 Volt Incandescent \* Radio AM/FM Stereo w/Cassette 4 Speakers \* Recept 110v GFI (interior & exterior) \* TV Prep (wire & 1 jack)

## EXTERIOR ACCESSORIES

Bumper Front Auto Style \* Bumper w/Sewer Hose Storage \* Mirrors Exterior \* Roof One Piece Aluminum \* Step Single Manual \* Storage Compartment under Bed w/Exterior Door \* Storage Exterior Compartment (1)

## INTERIOR FEATURES

Cabinet Doors w/Decorative Etched Glass \* Carpet w/Pad Throughout \* Ceiling Vinyl Clad \* Mirror w/Decorative Wood Frame \* Paneling Monterey Oak Vinyl Clad w/Accent Walls \* Paneling Textured Light Color in Bedroom \* Paneling Decorative Vinyl in Bath Area \* 7' Interior Height \* Privacy Drapes (lined) for Windshield \* Window Treatment Textured Roller Shades w/Tie Back Drapes/Valance \* Window Treatment Mini Blinds Kitchen & Bath Windows

## PLUMBING SYSTEMS

Tank Gray Water 25 Gal \* Tank Sewage Holding 25 Gal. \* Water Capacity 42 Gal \* Water System Demand with 5/8" Polybutylene Lines \* Hook-Up for City Water

## RUNNING GEAR & CONSTRUCTION

Floor 5/8" Plywood \* Insulation R5 Fiberglass \* Shock Absorbers \* Spare Tire Carrier \* Tires Radial - Ford Chassis \* Tires Polyester - Chevy Chassis \* Wheel Covers Decorative Deluxe

## SAFETY FEATURES

Fire Extinguisher 5 BC \* Seat Belts \* Smoke Detector

## WINDOWS, DOORS, AWNINGS & VENTS

Awning Rail \* Door Vinyl Folding \* Door Entrance 26" \* Door Screen \* Grab Handle \* Vent in Roof Non-Power w/Smoked Dome (2 or 4) \* Windows Torque Safety Glass

# AMERICAN STAR OPTIONS

Foam Cor Insulation  
4.0 K/W Onan Generator  
Chrome Bumper Cover  
Bi-Fold Range Cover  
Counter Top Extension  
Double Step  
11,000 BTU Roof Air  
13,000 BTU Furnace  
Al. Water Heater W/Auto Ign  
Monitor Panel  
L/P Leak Detector

Dead Bolt Lock  
Deluxe Drink Tray  
Sofa in lieu of Dinette  
ABS Tub Surround  
Roof Rack & Ladder  
Bed Spread - Double  
13,500 BTU Roof Air  
8' Double Door Refrigerator  
Power Bath Vent  
T.V. Antenna W/Power

Aluminum Running Boards  
Side Awning - A/E  
Spare Tire/Deluxe Cover  
Bath Decor Package  
Ford Chassis (460)  
Bed Spread - Twin  
Heat Strip for Air  
Magic Chef Microwave  
Power Roof Vent  
Extra T.V. Jack