



Newmar Corporation

1987 London Aire

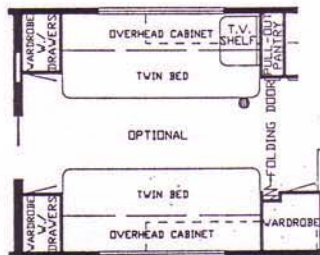


1987 TRAVEL TRAILER

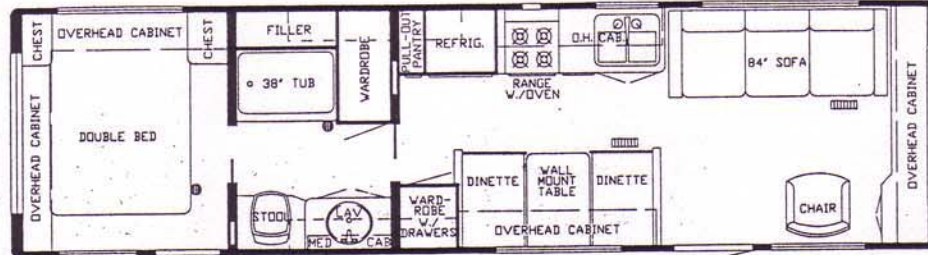
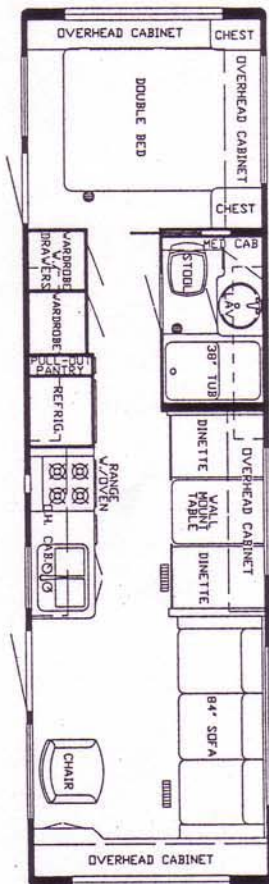
SPECIFICATIONS & FLOORPLANS



Newmar Corporation
P.O. Box 30
Nappanee, IN 46550-0030 (219) 773-7791

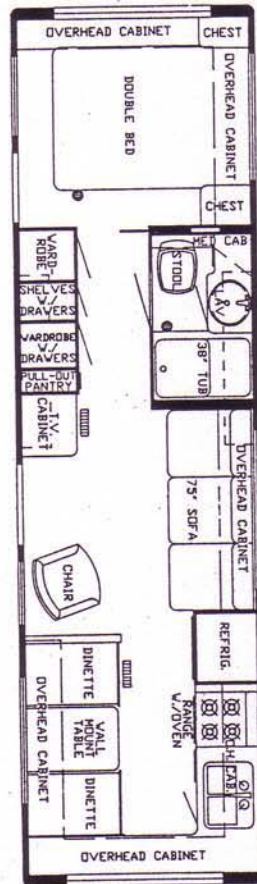


31 CBD

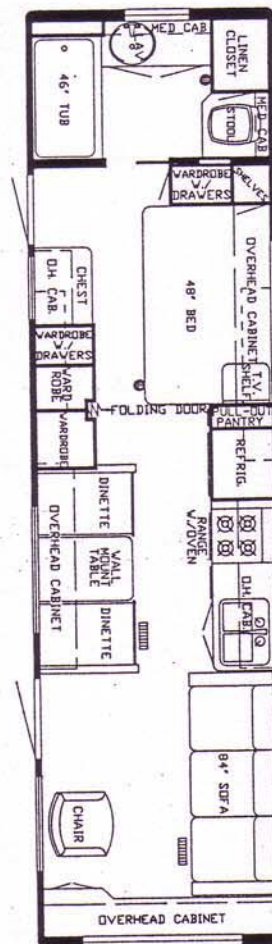


33 CBD

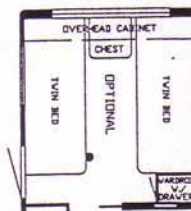
31 FKD



33 RBD



35 CBD



DIMENSIONS	31 CBD	31 FKD	33 CBD	33 RBD	35 CBD
Gross Dry Weight	6,600	6,600	6,800	6,800	6,900
Hitch Dry Weight	700	700	800	800	800
Axle Dry Weight	5,900	5,900	6,000	6,000	6,100
Gvwr	8,000	8,000	8,500	8,500	8,500
Interior Height	6'6"	6'6"	6'6"	6'6"	6'6"
Exterior Height w/Air	10'3"	10'3"	10'3"	10'3"	10'3"
Width	7'9"	7'9"	7'9"	7'9"	7'9"
Length	31'10"	31'10"	33'9"	33'9"	34'10"
Sleeping Accomodations	6	6	6	6	6

LONDON AIRE TRAVEL TRAILERS STANDARD EQUIPMENT

AIR CONDITIONING, HEATING & LP GAS

Air Conditioning 13.5 center * Heat Under Floor Ducted * Furnace 35M Electronic Ignition (31'-35') * L.P. Gas Bottles 2-40# Steel w/Auto Reg. * L.P. See Level Guages

APPLIANCES & ACCESSORIES

Bathroom Accessories Package (brass towel bar/soap dish/tissue holder/towel ring) * Robe Hook * Towel Rack in Bath Area (where Appl) * Faucet for Sink Single Handle Mixing w/Spray Hose * Faucet for Lavatory Double Handle Mixing (Brass) * Faucet for Shower Double Handle Mixing w/Spigot (Brass) * Sink Deep Double Stainless Steel * Sink Large Lavatory Cultured Marble * Sink Covers Hardwood (2) * Stool w/Padded Lid * Tub/Shower Fiberglass * Rod for Clothes in Tub/Shower * Water Heater Gas/Elect 10 Gal. * Water Heater Bypass Kit * Reignitor 12V for 10 Gal. w/Heater * Water Purifying System (Sink Cold & Icemaker) * Food Center Nutone (blender & mixer) * Grill Gas Portable * Ice Maker (110V) * Microwave Oven Spacemaker G.E. * Range 4-Burner 22" w/Top Pilot/Oven * Range Cover Bi-Fold Deluxe * Range Hood w/Light & Fan * Refrigerator Dometic 3800 AES (110V-Gas) * Vacuum System Portable

CABINETS & FURNITURE

Bed Double (75") * Headboards Decorative * Spring Lifts for Convenient Under-bed Storage (queen, Double & bed) * Sofa Bed Free Standing * Sofa Bed Built In * Boodcase Angle Cabinet w/TV Shelf (Walnut) * Cabinet China * Cabinet Medicine * Cabinet Night Stand * Cabinetry Walnut w/Raised Panel Doors * Catches Spring * Chair(s) Swivel Rocker Except RKD * Counter Top Extension * Doors or Drawers under Dinette for Easy Access * Drawer w/Silverware Tray * Drawers Wooden w/Metal Guides & Side Rollers * Hamper/Storage * Pantry Slide-out * Dinette w/Flex-a-lator & Fabric Covered Ends * Table Hi-Lo * Wardrobe Shirt

ELECTRICAL & LIGHTING EQUIPMENT

Antenna for Radio * Antenna for TV & 2 Jacks * Battery 80 AMP Deep Cycle (Sears Die Hard) * Battery Box on Slides * Converter 40 AMP w/Charger * Electrical Service 30 AMP * Lights 10" Behind Glass Doors * Light Fixture Deluxe Over Dinette * Lights in Wardrobe Auto. * Lights Backup * Light Exterior w/Inside Switch * Lights for Hook-up Convenience * Light Running & Backup Recessed * Light for Servie * Lighting 12V Fluorescent * Monitor Panel Super Deluxe w/Clock & Weather Center * Plug & Bracket for Tow Vehicle * Radio AM/FM Stereo w/Cassette 4 Speakers (CB Models 6 Speakers) * Recept 110V GFI (interior & exterior) * TV Color AC/DC w/Remote Control * TV Shelf w/Remote Switch * TV Cable Hook up * VCR w/Newmar Tape

EXTERIOR ACCESSORIES

Bumper Rear Auto Style w/Storage Compartment * Exterior Front & Rear Fiberglass * Exterior Sides Fiberglass * LP Gas Bottles Concealed * Roof Fiberglass * Step Single Manual w/Non Skid Surface * Stone Guard Pull Down Vinyl * Storage Exterior Slide Out Drawer 48" * Storage Exterior Slide Out Drawer 29" * Storage Exterior Slide Out Drawer 29"

INTERIOR FEATURES

Bedsprad(s) Quilted w/Matching Shams Twin/Double/Queen * Cabinet Doors w/Decorative Leaded Glass * Carpet w/Pad Throughout * Ceiling Woven Soft Touch * Door Header Cushioned * Painting Original Oil * Paneling Walnut Hardwood * Paneling Textured Light Color in Bedroom * Paneling Decorative Vinyl in Bath Area * Wall Decorative Vinyl in Living Area * 6'6" Interior Height * Window Treatment Mini Blinds Kitchen & Bath Window * Window Treatment wood Mini Blinds, CncBd/Drapes/Tvs Rod/Tie Bks

PLUMBING SYSTEMS

Tank Gray Water 48 Gal * Tank Sewage Holding 48 Gal * Water Capacity 42 Gal * Water System Demand with 5/8" Polybutylene Lines * Hook-up for City Water

RUNNING GEAR & CONSTRUCTION

Axle 4" Drop w/12" Electric Brakes * Floor 1" Laminated Plywood * Frame Size 8" I-Beam * Insulation 1/4" Fome-Cor on Exterior Roof * Insulation R5 Fiberglass in Sidewalls & Ceiling * Insulation Additional R5 Fiberglass in Roof & Floor * Insulation Laminated 5/8" Foam in Sidewalls & Ceiling * Jack Stabilizer (set of 4) * Jack for Hitch 12V Power * Shock Absorbers * Skid Straps * Spare Tire, Wheel, in Slide Out Tray * Structure Aluminum 16" Centers Sidewalls & Roof * Tires Radial * Underberlly Enclosed w/Lam. 5/8" Foam * Wheels 15" Polished Aluminum

SAFETY FEATURES

Break Away Switch * Fire Extinguisher 10 BC * LP Leak Detector (In line) * Safety Chains * Smoke Detector

WINDOWS, DOORS, AWNINGS & VENTS

Awning Front Recessed * Awning Rail * Awning Rear Recessed * Power for Recessed Awning * Awning Side (A&E 9000) * Door Wood Folding * Door Entrance 30" w/Flush Latch & Dead Bolt Lock * Door Secondary 26" * Door Screen * Door Bell * Grab Handle Deluxe * Dead Bolt Locks * Vent in Bath Area w/Wall Switch 12V * Windows Radius Torqued Tinted Safety Glass * Window Radius Picture 30" x 48" at Dinette * Screens-Sliding

LONDON AIRE TRAVEL TRAILER OPTIONAL EQUIPMENT

AIR CONDITIONING, HEATING & LP GAS

Air Condition Extra 13.5 Central w/Wiring
Furnace Next Size Larger ILO of Standard

APPLIANCES & ACCESSORIES

Sink Larger Double Stainless Steel ILO Standard
Tub 40" w/Remainder Wardrobe ILO Standard
Microwave Oven Convection w/4 Burner Plate ILO
Spacemaker G.E.

Safe

Washer & Dryer

Washer/Dryer Prep - Plumbing, Electric/Recept &
Shelf

CABINETS & FURNITURE

Bed Twin ILO Double Stainless Steel ILO Std.
Bed Queen (where app)(60"x80") w/Spread & Sham
Bunk Stationary 32" w/5" Foam Mattress(walnut)
Cabinet Overhead Extra (ea)(walnut)
Chair Wood Folding
Bar (Table Height) ILO Dinette (walnut)
Dinette Free Standing w/2 Chairs ILO Stand Walnut
Built-in
Table Hi-Lo Extra (walnut)
Table Wall Mount (walnut)

ELECTRICAL LIGHTING EQUIPMENT

Batteries 80 AMP Deep Cycle ILO Standard-2(Sears
Die Hard)
Electrical Service 50 AMP ILO 30
Intercom System
Lights Exterior Security (ea)
Recept 110V (extra)
Switch 110V (extra)
Switch Shut-off for Bedroom Speakers
TV Jack Extra
Telephone Jack

EXTERIOR ACCESSORIES

Ladder w/Hinge & Roof Rack
Slide Out (walnut) 94" w/Lights
Slide Out (walnut) 74" w/Lights
Step Single 12V Auto ILO Std.
Storage Roof Pod 10 cu./ft.
Storage Roof Pod 21 cu./ft.

INTERIOR FEATURES

Floor Covering Vinyl ILO of Carpet
Ceiling Vinyl Automotive Headliner ILO Soft Touch
Paneling Wood Grain Throughout (walnut)

PLUMBING SYSTEMS

Heat Pads for Holding Tanks
Sewage Rinse

SAFETY FEATURES

Customer Pick Up

WINDOWS, DOORS, AWNINGS & VENTS

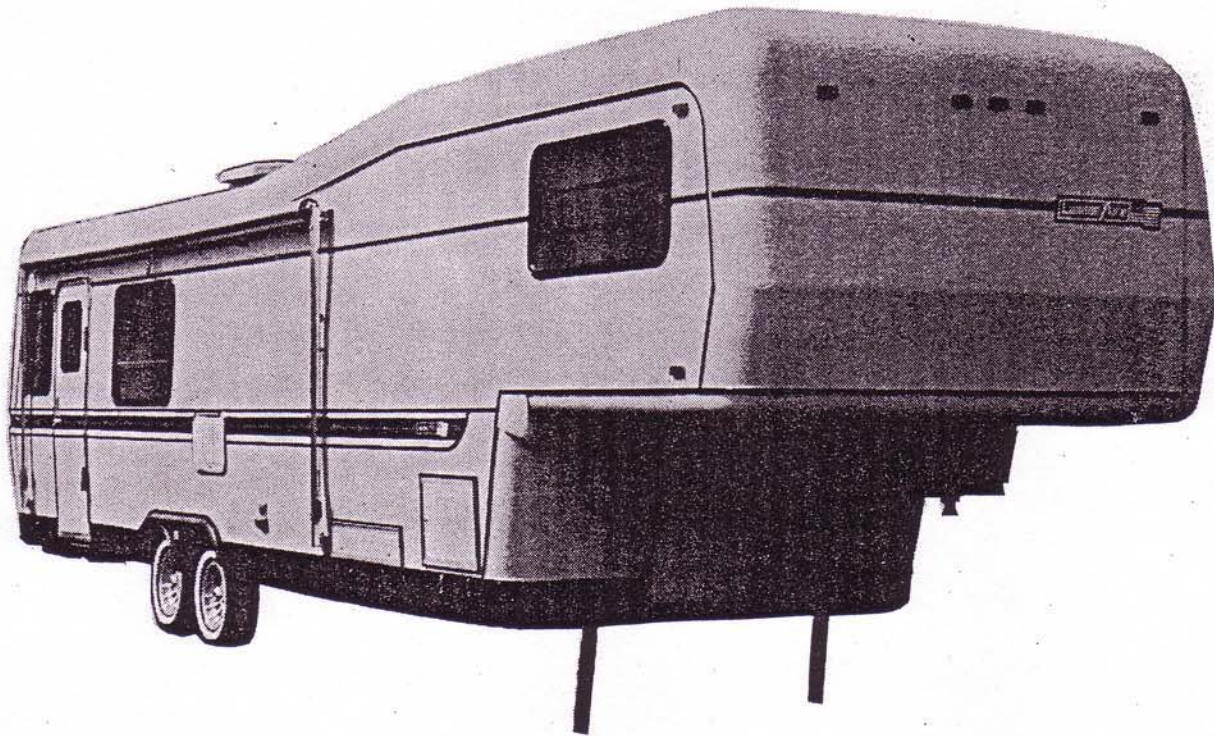
Awning(s) Window Off Door Side (ea) (A&E9000)
Center Support for Side Awning
Vent in Roof 12V
Windows Storm Set (29'-40')
Skylight in Bathroom

Prices and Specifications are subject to change
without Notification.



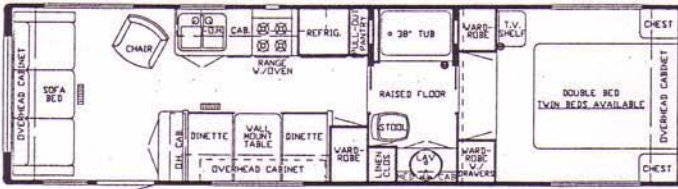
1987 FIFTH WHEEL

SPECIFICATIONS & FLOOR PLANS

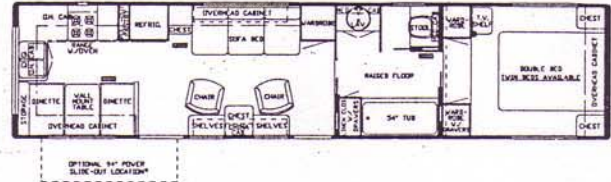


Newmar Corporation
P.O. Box 30
Nappanee, IN 46550-0030 (219) 773-7791

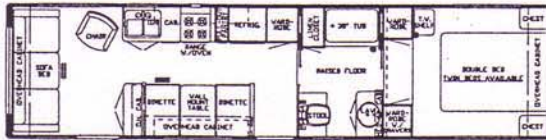
29 WRFD



35 WRKD



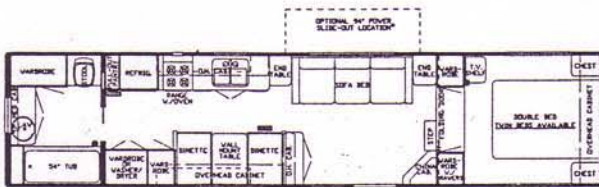
32 WRFD



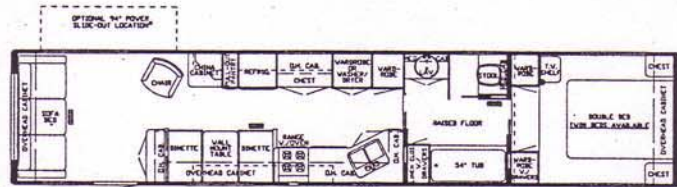
37 WRFD



35 RBD



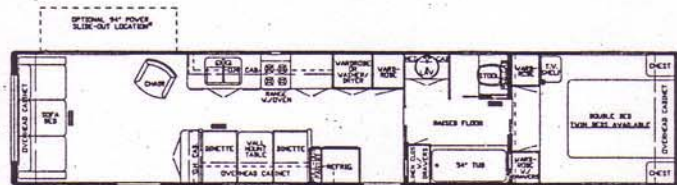
40 WDKD



35 WRFD



40 WRFD



DIMENSIONS	29 WRFD	32 WRFD	35 RBD	35 WRFD	35 WRKD	37 WRFD	40 WDKD	40 WRFD
Gross Dry Weight	7200	7600	8300	8300	8300	8800	9000	9000
Hitch Dry Weight	1200	1400	1400	1400	1400	1400	1400	1400
Axle Dry Weight	6000	6200	6900	6900	6900	7400	7600	7600
Gvwr	8500	9000	10200	10200	10200	11600	12000	12000
Height w/Air	10'10"	10'10"	10'10"	10'10"	10'10"	10'10"	10'10"	10'10"
Width	7'9"	7'9"	7'9"	7'9"	7'9"	7'9"	7'9"	7'9"
Length	30'8"	32'9"	35'10"	35'10"	35'10"	38'6"	39'10"	39'10"
Sleeping Accomodations	6	6	6	6	6	6	6	6

LONDON AIRE FIFTH WHEELS STANDARD EQUIPMENT

AIR CONDITIONING, HEATING & LP GAS

Air Conditioning 13.5 central * Heat Under Floor Ducted * Furnace 32M Electronic Ignition (28'-29') 35M (31'-35') 41M (37' - up) * Dual Fuel Conversion w/41 Gal. LP Tank (except California)

APPLIANCES & ACCESSORIES

Bathroom Accessories Package (brass towel bar/soap dish/tissue holder/towel ring) * Robe Hook * Towel Rack in Bath Area (where Appl) * Faucet for Sink Single Handle Mixing w/Spray Hose * Faucet for Lavatory Double Handle Mixing (Brass) * Faucet for Shower Double Handle Mixing w/Spigot (Brass) * Sink Deep Double Stainless Steel * Sink Large Lavatory Cultured Marble * Sink Covers Hardwood (2) * Stool w/Padded Lid * Tub/Shower Fiberglass * Rod for Clothes in Tub/Shower * Water Heater Gas/Elect 10 Gal. * Water Heater Bypass Kit * Reignitor 12V for 10 Gal. w/Heater * Water Purifying System (Sink Cold & Ice maker) * Food Center Nutone (blender & mixer) * Grill Gas Portable * Ice Maker (110V) * Microwave Oven Spacemaker G.E. * Range 4-Burner 22" w/Top Pilot/Oven * Range Cover Bi-Fold Deluxe * Range Hood w/Light & Fan * Refrigerator Dometic 3800 AES (110V-Gas) * Vacuum System Portable

CABINETS & FURNITURE

Bed Double (75") * Headboards Decorative * Spring Lifts for Convenient Under-bed Storage (queen, Double & bed) * Sofa Bed Free Standing * Sofa Bed Built In * Cabinet China * Cabinet Medicine * Cabinet Night Stand * Cabinetry Walnut w/Raised Panel Doors * Catches Spring * Chair Free Standing Pedestal (RKD only) * Chair(s) Swivel Rocker Except RKD * Counter Top Extension * Doors or Drawers under Dinette for Easy Access * Drawer w/Silverware Tray * Drawers Wooden w/Metal Guides & Side Rollers * Hamper/Storage * Pantry Slide-out * Dinette w/Flex-a-lator & Fabric Covered Ends * Table Hi-Lo * Wardrobe Shirt

ELECTRICAL & LIGHTING EQUIPMENT

Antenna for Radio * Antenna for TV & 2 Jacks * Battery 80 AMP Deep Cycle (Sears Die Hard) * Battery Box on Slides * Converter 40 AMP w/Charger * Electrical Service 30 AMP * Lights 10" Behind Glass Doors * Light Fixture Deluxe Over Dinette * Lights in Wardrobe Auto. * Lights Backup * light Exterior w/Inside Switch * Lights for Hook-up Convenience * Light Running & Backup Recessed * Light for Service * Lighting 12V Fluorescent * Monitor Panel Super Deluxe w/Clock & Weather Center * Plug & Bracket for Tow Vehicle * Radio AM/FM Stereo w/Cassette 4 Speakers (CB Models 6 Speakers) * Recept 110V GFI (interior & exterior) * TV Color AC/DC w/Remote Control * TV Shelf w/Remote Switch * TV Cable Hook up * VCR w/Newmar Tape

EXTERIOR ACCESSORIES

Bumper Rear Auto Style w/Storage Compartment * Exterior Front & Rear Fiberglass * Exterior Sides Fiberglass * LP Gas Bottles Concealed * Roof Fiberglass * Step Double Manual w/Non Skid Surface * Stone Guard Pull Down Vinyl * Storage Exterior Compartment (1) * Storage Exterior Slide Out Drawer 48" * Storage Exterior Slide Out Drawer 29" * Storage Exterior Slide Out Drawer 29"

INTERIOR FEATURES

Bedsprad(s) Quilted w/Matching Shams Twin/Double/Queen * Cabinet Doors w/Decorative Leaded Glass * Carpet w/Pad Throughout * Ceiling Woven Soft Touch * Door Header Cushioned * Painting Original Oil * Paneling Walnut Hardwood * Paneling Textured Light Color in Bedroom * Paneling Decorative Vinyl in Bath Area * Wall Decorative Vinyl in Living Area * Stand Up Bedroom Area * 6'6" Interior Height * Window Treatment Mini Blinds Kitchen & Bath Window * Window Treatment wood Mini Blinds, CncBd/Drapes/Tvs Rod/Tie Bks

PLUMBING SYSTEMS

Tank Gray Water 48 Gal * Tank Sewage Holding 48 Gal * Water Capacity 42 Gal * Water System Demand with 5/8" Polybutylene Lines * Hook-up for City Water

RUNNING GEAR & CONSTRUCTION

Axle Straight Tandem w/12" Brakes * Floor 1" Laminated Plywood * Frame Size 8" I-Beam * Hitch Plate & Bracket * Insulation 1/4" Fome-Cor on Exterior Roof * Insulation R5 Fiberglass in Sidewalls & Ceiling * Insulation Additional R5 Fiberglass in Roof & Floor * Insulation Laminated 5/8" Foam in Sidewalls & Ceiling * Jack Stabilizer (set of 2) * Jack for Hitch 12V Power * Shock Absorbers * Skid Straps * Spare Tire, Wheel, in Slide Out Tray * Stabilizer Fifth Wheel Pin * Structure Aluminum 16" Centers Sidewalls & Roof * Tires Radial * Underbody Enclosed w/Lam. 5/8" Foam * Wheels 15" Polished Aluminum

SAFETY FEATURES

Break Away Switch * Fire Extinguisher 10 BC * LP Leak Detector (In line) * Safety Chains * Smoke Detector

WINDOWS, DOORS, AWNINGS & VENTS

Awning Rail * Awning Rear Recessed * Power for Recessed Awning * Awning Side (A&E 9000) * Door Wood Folding
Door Entrance 30" w/Flush Latch & Dead Bolt Lock * Door Secondary 26" * Door Screen * Door Bell * Grab
Handle Deluxe * Dead Bolt Locks * Vent in Bath Area w/Wall Switch 12V * Window Frosted Glass 15" x 24"
Bathroom * Windows Radius Torqued Tinted Safety Glass * Window Radius Picture 30" x 48" at Dinette

LONDON AIRE FIFTH WHEEL OPTIONAL EQUIPMENT

AIR CONDITIONING, HEATING & LP GAS

Air Conditioning Extra 13.5 Central w/Wiring
Furnace Next Size Larger ILO of Standard

APPLIANCES & ACCESSORIES

Sink Larger Double Stainless Steel ILO Standard
Tub 40" w/Remainder Wardrobe ILO Standard
Microwave Oven Convection w/4 Burner Plate ILO
Spacemaker G.E.

Safe
Washer & Dryer
Washer/Dryer Prep - Plumbing, Electric/Recept &
Shelf

CABINETS & FURNITURE

Bed Twin ILO Double Stainless Steel ILO Std.
Bed Queen (where app)(60"x80") w/Spread & Sham
Bunk Stationary 32" w/5" Foam Mattress(walnut)
Bookcase Angle Cabinet w/TV Shelf(walnut)
Chair Wood Folding
Entertainment Center (walnut)
Bar (Table Height) ILO Dinette (walnut)
Dinette Free Standing w/2 Chairs ILO Stand Walnut
Built-in
Table Hi-Lo Extra (walnut)
Wardrobe (walnut) ILO Front Door (WT only)

ELECTRICAL LIGHTING EQUIPMENT

Batteries 80 AMP Deep Cycle ILO Standard-2(Sears
Die Hard)
Electrical Service 50 AMP ILO 30
Generator 4.0kw Onan w/1 remote switch
& auto changeover
Generator 6.5kw Onan w/1 Remote switch
& auto changeover
Generator Prep (auto changeover, wire & door)
Generator Prep complete w/Gas Tank
LP Gas Conversion for Generator
Intercom System
Lights Exterior Security (ea)
Recept 110V (extra)
Switch 110V (extra)
Switch Shut-off for Bedroom Speakers
TV Jack Extra
Telephone Jack

EXTERIOR ACCESSORIES

Ladder w/Hinge & Roof Rack
Slide Out (walnut) 94" w/Lights
Slide Out (walnut) 74"
Step Double 12V Auto ILO Std. w/Non Skid Surface
Storage Roof Pod 10 cu./ft.
Storage Roof Pod 21 cu./ft.

INTERIOR FEATURES

Floor Covering Vinyl ILO of Carpet
Ceiling Vinyl Automotive Headliner ILO Soft Touch
Paneling Wood Grain Throughout (walnut)

PLUMBING SYSTEMS

Heat Pads for Holding Tanks
Sewage Rinse

RUNNING GEAR & CONSTRUCTION

Hitch Installation Fifth Wheel
Jacks Stabilizer Extra (set of 2)

SAFETY FEATURES

Customer Pick Up

WINDOWS, DOORS, AWNINGS & VENTS

Awning(s) Window Off Door Side (ea) (A&E9000)
Center Support for Side Awning
Vent in Roof 12V
Windows Storm Set (29'-40')
Skylight in Bathroom

Prices and Specifications are subject to change
without Notification.



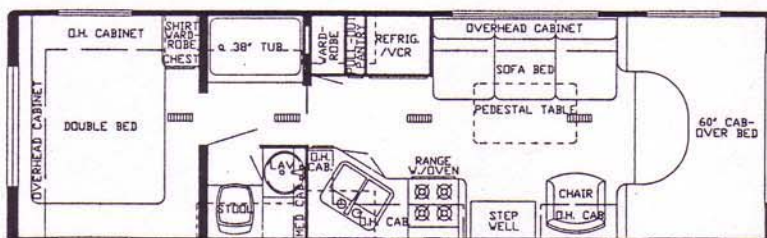
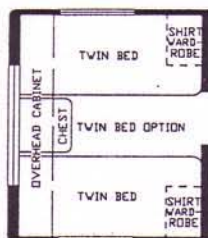
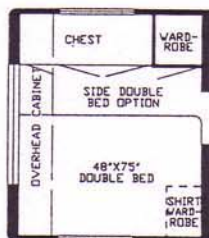
1987 MINI HOMES

SPECIFICATIONS & FLOOR PLANS



Newmar Corporation
P.O. Box 30
Nappanee, IN 46550-0030 (219) 773-7791

28 WCB

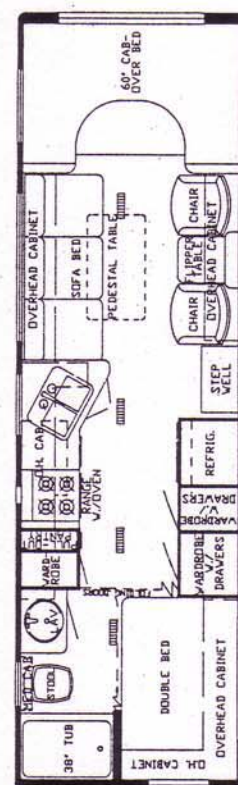
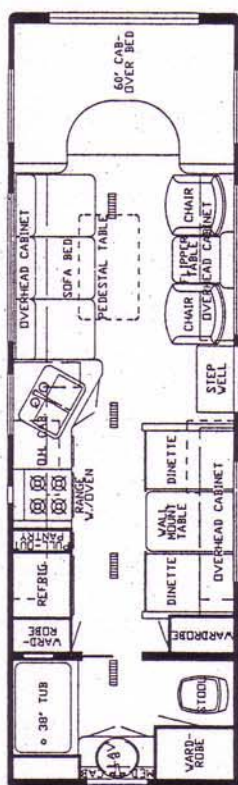
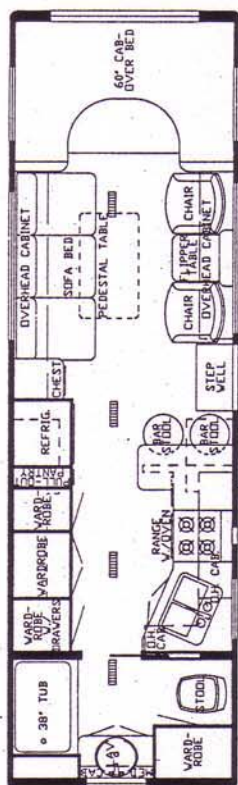
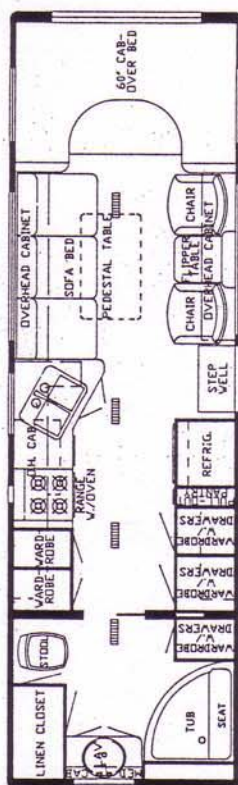


28 RB

28 RBB

28 RBD

28 SB



DIMENSIONS	28 RB	28 RBB	28 RBD	28 SB	28 WCB
Gross Dry Weight	11,600	11,600	11,600	11,600	11,600
Front Axle Weight	3,600	3,600	3,600	3,600	3,600
Rear Axle Weight	8,000	8,000	8,000	8,000	8,000
Gvwr	13,000	13,000	13,000	13,000	13,000
Interior Height	6'6"	6'6"	6'6"	6'6"	6'6"
Exterior Height w/Air	10'10"	10'10"	10'10"	10'10"	10'10"
Width	7'9"	7'9"	7'9"	7'9"	7'9"
Length	28'5"	28'5"	28'5"	28'5"	28'5"
Wheel Base	176"	176"	176"	176"	176"
Sleeping Accomodations	4	4	6	6	6

LONDON AIRE MINI HOMES STANDARD EQUIPMENT

AIR CONDITIONING, HEATING & LP GAS

Air Conditioning 13.5 central * Heat Under Floor Ducted * Furnace 32M Electronic Ignition (28'-29') * L.P. Gas Tank 15 Gal. * Dual Fuel Conversion w/41 Gal. LP Tank (except California)

APPLIANCES & ACCESSORIES

Bathroom Accessories Package (brass towel bar/soap dish/tissue holder/towel ring) * Robe Hook * Towel Rack in Bath Area (where Appl) * Faucet for Sink Single Handle Mixing w/Spray Hose * Faucet for Lavatory Double Handle Mixing (Brass) * Faucet for Shower Double Handle Mixing w/Spigot (Brass) * Sink Deep Double Stainless Steel * Sink Large Lavatory Cultured Marble * Sink Covers Hardwood (2) * Stool w/Padded Lid * Tub/Shower Fiberglass * Rod for Clothes in Tub/Shower * Water Heater Gas 6 Gal. w/Electric Ignition * Water Heater Bypass Kit * Water Purifying System (Sink Cold & Ice maker) * Food Center Nutone (blender & mixer) * Grill Gas Portable * Ice Maker (110V) * Microwave Oven Convection w/4 Burner Hot Plate * Range Cover Bi-Fold Deluxe * Range Hood w/Light & Fan * Refrigerator Dometic 3800 AES (110V-Gas) * Vacuum System Portable

CABINETS & FURNITURE

Bed Double (75") * Headboards Decorative * Sofa Bed Built In * Cabinet Medicine * Cabinet Night Stand * Cabinetry Walnut w/Raised Panel Doors * Catches Spring * Chair(s) Barrel * Counter Top Extension * Doors or Drawers under Dinette for Easy Access * Drawer w/Silverware Tray * Drawers Wooden w/Metal Guides & Side Rollers * Pantry Slide-out * Dinette w/Flex-a-lator & Fabric Covered Ends * Snack Tray on Engine Cover w/Cassette Holder * Table Between Barrel Chairs * Table Free Standing Pedestal

CHASSIS FEATURES

Brakes Power * Cruise Control * Gasoline Fuel Capacity 42 Gal.(Ford) * Heater/Air Conditioner High Output Automotive * Power Door Locks * Power Windows * Power Steering * Steering Wheel Tilt * Tinted Windshield * Automatic Transmission

ELECTRICAL & LIGHTING EQUIPMENT

Antenna for Radio * Antenna for TV & 2 Jacks * Battery 80 AMP Deep Cycle (Sears Die Hard) * Battery Automotive * Battery Box on Slides * Battery Disconnect * Battery Isolator * CB Radio w/Antenna * Clock for AM/FM Stereo * Converter 40 AMP w/Charger * Electrical Service 30 AMP * Generator 4.0kw Onan w/1 Remote Switch & Auto Changeover * Lights 10" Behind Glass Doors * Light Fixture Deluxe Over Dinette * Lights Fog * Lights Interior Courtesy * Lights in Wardrobe Auto. * Lights Backup * light Exterior w/Inside Switch * Lights Running & Backup Recessed * Lighting 12V Fluorescent * Monitor Panel Super Deluxe w/Clock & Weather Center * Radio AM/FM Stereo w/Cassette 4 Speakers (CB Models 6 Speakers) * Recept 110V GFI (interior & exterior) * TV Color AC/DC Built-in * TV Cable Hook up * VCR w/Newmar Tape

EXTERIOR ACCESSORIES

Bumper Front Auto Style * Bumper Rear Auto Style w/Storage Compartment * Exterior Front & Rear Fiberglass * Exterior Sides Fiberglass * Ladder & Roof Rack * Mirrors Exterior * Roof Fiberglass * Running Boards Fiberglass * Step Double 12V Auto. w/Non Skid Surface * Storage Compartment under Bed w/Exterior Door * Storage Exterior Slide Out Drawer 29"

INTERIOR FEATURES

Bedsread(s) Quilted w/Matching Shams Twin/Double/Queen * Cabinet Doors w/Decorative Leaded Glass * Carpet w/Pad Throughout * Ceiling Woven Soft Touch * Door Header Cushioned * Painting Original Oil * Paneling Walnut Hardwood * Paneling Textured Light Color in Bedroom * Paneling Decorative Vinyl in Bath Area * 6'6" Interior Height * Privacy Drapes (lined) for Windshield * Window Treatment Mini Blinds Kitchen & Bath Window * Window Treatment wood Mini Blinds, CncBd/Draper/Tvs Rod/Tie Bks

PLUMBING SYSTEMS

Tank Gray Water 25 Gal * Tank Sewage Holding 25 Gal * Water Capacity 42 Gal * Water System Demand with 5/8" Polybutylene Lines * Hook-up for City Water

RUNNING GEAR & CONSTRUCTION

Floor 1" Laminated Plywood * Hitch for Towing Car w/Wire Connector * Insulation 1/4" Fome-Cor on Exterior Roof * Insulation R5 Fiberglass in Sidewalls & Ceiling * Jack Hydraulic (6 ton) * Mud Flaps (front & rear) * Shock Absorbers * Spare Tire, Wheel, in Slide Out Tray * Structure Aluminum 16" Centers Sidewalls & Roof * Suspension Mor-Ryde Tag Axle * Tires Radial (Ford) * Wheel Covers Decorative Deluxe

STANDARD SPECIFICATIONS CONTINUED

SAFETY FEATURES

Fire Extinguisher 10 BC * LP Leak Detector (In line) * Seat Belts * Shoulder Straps (Driver & Pass Seats) *
Smoke Detector

WINDOWS, DOORS, AWNINGS & VENTS

Awning Rail * Awning Side (A&E 9000) * Door Wood Folding * Door Entrance 26" w/Flush Latch & Dead Bolt Lock
* Door Screen * Door Bell * Grab Handle Deluxe * Dead Bolt Locks * Vent in Bath Area w/Wall Switch 12V *
Windows Radius Slider Tinted Safety Glass * Window Radius Picture 30" x 48" at Dinette * Screens-Sliding

LONDON AIRE MINI HOMES OPTIONAL EQUIPMENT

HEATING

Furnace next size larger ILO of standard

ACCESSORIES

Safe

FURNITURE

Bed Twin ILO Double w/Spreads & Shames

ELECTRICAL & LIGHTING EQUIPMENT

Batteries 80 AMP Deep Cycle ILO Standard - 2 (Sears
Die
Hard)
LP Gas Conversion for Generator
Lights Exterior Security (ea)
Recept 110V (extra)
Switch 110V (extra)
TV Jack Extra
Telephone Jack

EXTERIOR ACCESSORIES

Storage Roof Pod 10 cu./ft.
Storage Roof Pod 21 cu./ft.(where applicable)

INTERIOR FEATURES

Ceiling Vinyl Automotive Headliner ILO Soft Touch
Paneling Wood Grain Throughout (Walnut)

SAFETY FEATURES

Customer Pick Up

WINDOWS, AWNINGS & VENTS

Awning(s) Window Off Door Side (ea)(A&E9000)
Center Support for Side Awning
Vent in Roof 12V
Skylight in Bathroom

Prices and Specifications are subject to change
without Notification.



1987 CLASS A MOTORHOME

SPECIFICATIONS & FLOORPLANS

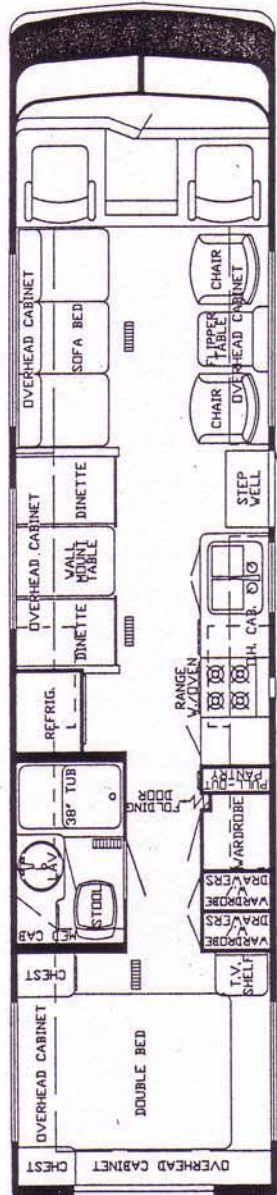


Newmar Corporation
P.O. Box 30
Nappanee, IN 46550-0030 (219) 773-7791

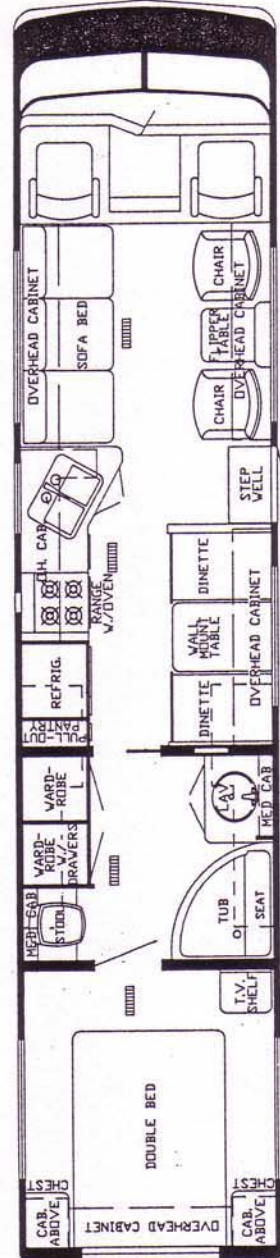
33 WCB



35 CBD



37 WCB



DIMENSIONS	33 WCB	35 CBD	37 WCB
Gross Dry Weight	14,000	14,000	14,000
Front Axle Weight	4,200	4,200	4,200
Rear Axle Weight	9,800	9,800	9,800
Gvwr	18,500	18,500	18,500
Interior Height	6'6"	6'6"	6'6"
Exterior Height w/Air	11'1"	11'1"	11'1"
Width	7'9"	7'9"	7'9"
Length	34'7"	35'6"	37'5"
Wheel Base	178"	178"	200"
Sleeping Accomodations	6	6	6

LONDON AIRE CLASS A MOTORHOME STANDARD EQUIPMENT

AIR CONDITIONING, HEATING & LP GAS

Air Conditioning 13.5 central * Heat Under Floor Ducted * Heater Auxiliary in Bedroom * Furnace 35M
Electronic Ignition (31'-35') Excalibur (37') * Dual Fuel Conversion w/64 Gal. LP Tank (except California)

APPLIANCES & ACCESSORIES

Bathroom Accessories Package (brass towel bar/soap dish/tissue holder/towel ring) * Robe Hook * Towel Rack in Bath Area (where App'l) * Faucet for Sink Single Handle Mixing w/Spray Hose * Faucet for Lavatory Double Handle Mixing (Brass) * Faucet for Shower Double Handle Mixing w/Spigot (Brass) * Sink Deep Double Stainless Steel * Sink Large Lavatory Cultured Marble * Sink Covers Hardwood (2) * Stool w/Padded Lid * Tub/Shower Fiberglass * Rod for Clothes in Tub/Shower * Water Heater Gas 6 Gal. w/Electric Ignition * Water Heater Bypass Kit * Water Purifying System (Sink Cold & Icemaker) * Food Center Nutone (blender & mixer) * Grill Gas Portable * Ice Maker (110V) * Microwave Oven Convection w/4 Burner Hot Plate * Range Cover Bi-Fold Deluxe * Range Hood w/Light & Fan * Refrigerator Dometic 3800 AES (110V-Gas) * Vacuum System Portable

CABINETS & FURNITURE

Bed Double (75") * Headboards Decorative * Spring Lifts for Convenient Under-bed Storage (queen/double beds) * Sofa Bed Built In * Cabinet Medicine * Cabinet Night Stand * Cabinetry Walnut w/Raised Panel Doors * Catches Spring * Chair(s) Barrel * Chair Recliner * Driver & Passenger Seat 6-way Power & Recliner * Counter Top Extension * Doors or Drawers under Dinette for Easy Access * Drawer w/Silverware Tray * Drawers Wooden w/Metal Guides & Side Rollers * Pantry Slide-out * Dinette w/Flex-a-lator & Fabric Covered Ends * Snack Tray on Engine Cover w/Cassette Holder * Table Between Barrel Chairs * Table Free Standing Pedestal

CHASSIS FEATURES

Brakes Power * Cruise Control * Gasoline Fuel Capacity 78 Gal. * Heater/Air Conditioner High Output Automotive * Power Door Locks * Power Steering * Steering Wheel Custom Padded Leather * Steering Wheel Tilt * Tinted Windshield * Automatic Transmission * Transmission Cooler

ELECTRICAL & LIGHTING EQUIPMENT

Antenna for Radio * Antenna for TV & 2 Jacks * Battery 80 AMP Deep Cycle (Sears Die Hard) * Battery Automotive * Battery Disconnect * Battery Isolator * CB Radio w/Antenna * Clock for AM/FM Stereo * Converter 40 AMP w/Charger * Cord Electrical w/Auto Rewind * Electrical Service 30 AMP * Fans Defroster Driver & Passenger * Generator 6.5kw Onan w/2 Remote Switch & Auto Changeover * Horn Trumpet * Lights 10" Behind Glass Doors * Light Fixture Deluxe Over Dinette * Lights Fog * Lights Interior Courtesy * Lights in Wardrobe Auto. * Lights Backup * Lights Docking * Light Exterior w/Inside Switch * Light under Hood * Light on Roof Remote Controlled (spot/flood) * Lights Running & Backup Recessed * Light for Service-Off Door Side * Lighting 12V Fluorescent * Monitor Panel Super Deluxe w/Clock & Weather Center * Radio AM/FM Stereo w/Cassette 4 Speakers (CB Models 6 Speakers) * Radio Jack & Headphone * Recept 110V GFI (interior & exterior) * Switch Auxiliary Start * TV Color AC/DC w/Remote Control * TV Color AC/DC Built-in * TV Cable Hook up * TV Monitor Closed Circuit Rear View * Trip Meter on Class A * VCR w/Newmar Tape

EXTERIOR ACCESSORIES

Bumper Front Auto Style * Bumper Rear Auto Style w/Storage Compartment * Exterior Front & Rear Fiberglass * Exterior Sides Fiberglass * Ladder & Roof Rack * Mirrors Exterior w/Remote Control & Defrost * Roof Fiberglass * Spoiler in the Front * Step Double 12V Auto. w/Non Skid Surface * Storage Exterior Slide Out Drawer 48" * Storage Exterior Slideout Drawer 35" (35' & 37") * Storage Exterior Slideout Drawer 29" * Storage Extra Exterior Slideout Drawer 29"

INTERIOR FEATURES

Bedsprad(s) Quilted w/Matching Shams Twin/Double/Queen * Cabinet Doors w/Decorative Leaded Glass * Carpet w/Pad Throughout * Ceiling Woven Soft Touch * Door Header Cushioned * Painting Original Oil * Paneling Walnut Hardwood * Paneling Textured Light Color in Bedroom * Paneling Decorative Vinyl in Bath Area * 6'6" Interior Height * Privacy Drapes (lined) for Windshield * Window Treatment Mini Blinds Kitchen & Bath Window * Window Treatment wood Mini Blinds, CncBd/Drapes/Tvs Rod/Tie Bks

PLUMBING SYSTEMS

Tank Gray Water 35 Gal * Tank Sewage Holding 40 Gal (55 Gal/33' CBD-37' CBD) * Water Capacity 54 Gal * Water Hose w/Auto Rewind w/City Water Hook-up * Water System Demand with 5/8" Polybutylene Lines

STANDARD EQUIPMENT CONTINUED.

RUNNING GEAR & CONSTRUCTION

Door 1" Laminated Plywood * Hitch for Towing Car w/Wire Connector * Insulation 1/4" Fome-Cor on Exterior
Roof * Insulation R5 Fiberglass in Sidewalls & Ceiling * Jack Hydraulic (6 ton) * Jacks Auto. Hydraulic
Leveling * Mud Flaps (front & rear) * Shock Absorbers * Shock Absorbers 4-way on Front * Spare Tire, Wheel,
in Slide Out Tray * Structure Aluminum 16" Centers Sidewalls & Roof * Suspension Mor-Ryde Tag Axle * Tires
Radial (Ford) * Wheels polished Aluminum

SAFETY FEATURES

Fire Extinguisher 10 BC * LP Leak Detector (In line) * Seat Belts * Shoulder Straps (Drv & Pass Seats) *
Smoke Detector

WINDOWS, DOORS, AWNINGS & VENTS

Awning Rail * Awning Side (A&E 9000) * Door Wood Folding * Door Driver Side w/Dead Bolt Lock * Door Entrance
26" w/Flush Latch & Dead Bolt Lock * Door Screen * Door Bell * Grab Handle Deluxe * Dead Bolt Locks * Vent
in Bath Area w/Wall Switch 12V * Windows Radius Slider Tinted Safety Glass * Window Radius Picture 30" x 48"
at Dinette * Screens-Sliding

LONDON AIRE CLASS A OPTIONAL EQUIPMENT

AIR CONDITIONING, HEATING & LP GAS

Air Conditioning Extra 13.5 Centyrul w/Wiring
Furnace Next Size Larger ILO of Std.

APPLIANCES & ACCESSORIES

Safe (where applicable)
Washer & Dryer (see floor plans)
Washer/Dryer Prep - Plumbing, Electric/Recept &
Shelf
(certain models)

CABINETS & FURNITURE

Bed Twin ILO Double w/Spreads & Shams
Bed Queen (where applicable)(60 x 80) w/Spread &
Sham

ELECTRICAL & LIGHTING EQUIPMENT

LP Gas Conversion for Generator
Lights Exterior Security (ea)
Recept 110V (extra)
Switch 110V (extra)
TV Jack Extra
Telephone Jack

EXTERIOR ACCESSORIES

Storage Roof Pod 10 cu./ft.
Storage Roof Pod 21 cu./ft. (where applicable)

INTERIOR FEATURES

Ceiling Vinyl Automotive Headliner ILO Soft Touch
Paneling Wood Grain Throughtout (Walnut)

SAFETY FEATURES

Customer Pick Up

WINDOWS, DOORS, AWNINGS & VENTS

Awning(s) Window Off Door Side (ea)(A&E 9000)
Center Support for Side Awning
Door Passenger w/Dead Bolt Lock
Vent in Roof 12V
Skylight in Bathroom

Prices and Specifications are subject to change
without Notification.