

1988

Time Honored Design ...



*Newmar Corporation: A sound company
backed by 20 years of experience.*

BY

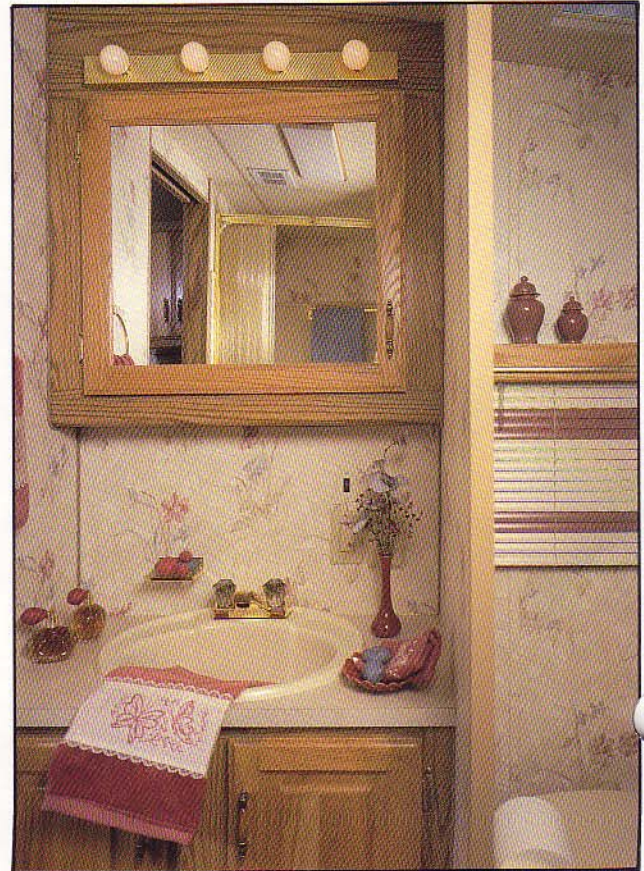




Fifth Wheel Living/Dining Area



Fifth Wheel Honeymoon Suite



Fifth Wheel Bath



Fifth Wheel Living Area (with optional entertainment center and slide-out room)

TIME HONORED DESIGN from a reliable company that's spent a lot of time in the past twenty years creating recreational vehicles for your camping and traveling pleasure. **A well designed product is unaffected by the passing of time and is continuously in demand, and as history has proven, Kountry Aire is included in this exclusive list of products.** You have insured yourselves and us of this year after year by returning to buy from a name you trust . . . KOUNTRY AIRE!

A traditional air of beauty surrounds you when you walk inside any vehicle in the Kountry Aire line up as these warm and inviting interiors illustrate. From front to rear, Kountry Aire's tradition of tasteful and practically designed living areas welcome you.

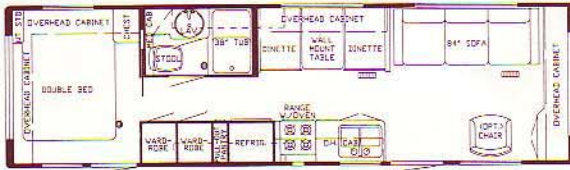
Professional and experienced designers and engineers carry **Time Honored Design** into every aspect of building all Kountry Aire

recreational vehicles. They are experts who not only know all the technicalities of production, but are well-seasoned campers themselves and have a good understanding of the needs and wants of the avid RVer. Good practical design, eye-appeal, sound construction and reliability are the essential components of **Time Honored Design**, and Kountry Aire concentrates totally on all of them.

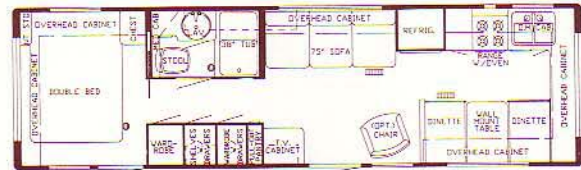
From the solid, dependable all aluminum superstructure to the subtle decorative accents inside and out, Kountry Aire is quality and offers a wide selection of floorplans, options and interior design choices. **We at Newmar realize that you, our customers, all have good ideas too** and a desire to add the colors, options and components that will personalize an RV to your taste and satisfaction. So be our guest and select your **Time Honored Design** from Kountry Aire today!

TRAVEL TRAILER Specifications & Floor Plans

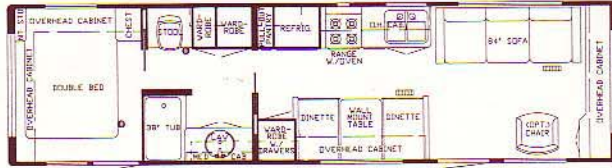
31 CBD



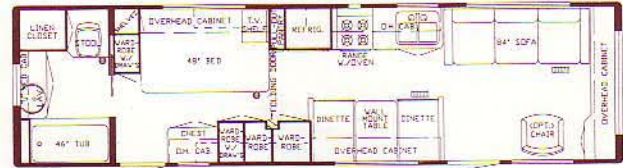
31 FKD



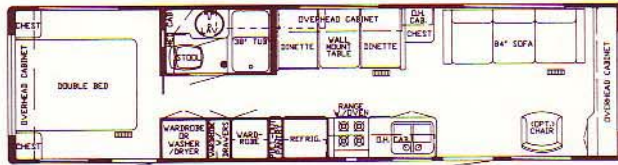
33 CBD



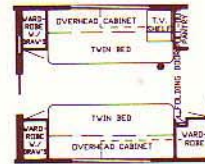
33 RBD



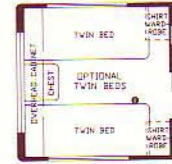
35 CBD



Only 33 RBD



Except 33 RBD

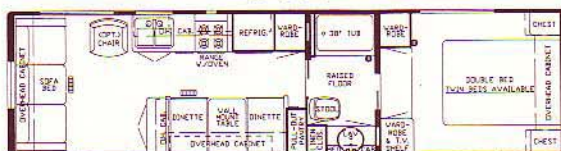


Dimensions	31 CBD	31 FKD	33 CBD	33 RBD	35 CBD
Gross Dry Weight	7300	7300	7800	7800	8300
Hitch Dry Weight	900	1000	990	900	1000
Axle Dry Weight	6400	6300	6810	6900	7300
GVWR	8900	8900	9100	9100	9600
Height with A/C	10'3"	10'3"	10'3"	10'3"	10'3"
Width	93"	93"	93"	93"	93"
Length	31'10"	31'10"	33'9"	33'9"	34'10"
Sleeping Accom.	6	6	6	6	6

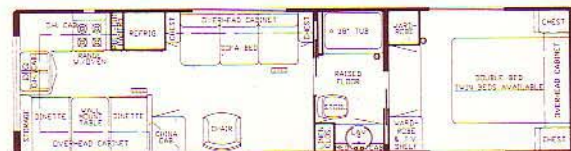
Approximate Weights. GVWR = Gross Vehicle Weight Rating. Charts Are Based on Standard Units.

FIFTH WHEEL Specifications & Floor Plans

29 WD



29 WRKD



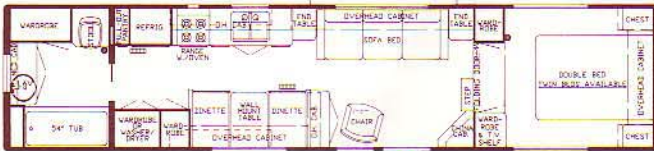
32 WD



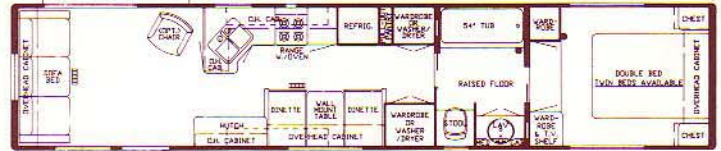
32 WRKD



35 RBD



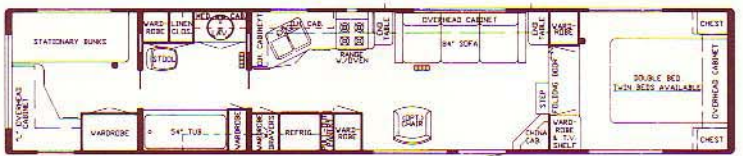
37 WD



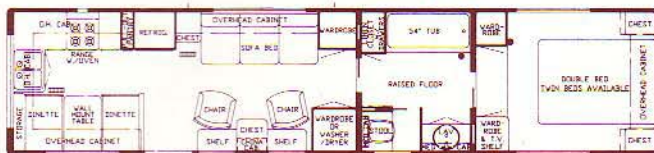
35 WD



40 WCB



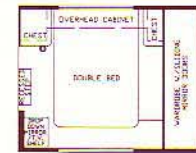
35 WRKD



40 WDKD



40 WD

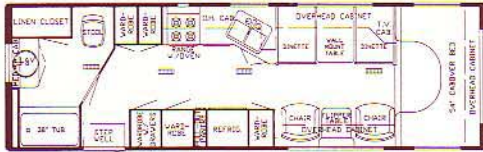
Optional Cabover
Honeymoon Suite

Dimensions	29 WD	29 WRKD	32 WD	32 WRKD	35 RBD	35 WD	35 WRKD	37 WD	40 WCB	40 WDKD	40 WD
Gross Dry Weight	7100	7100	7760	7760	7900	7900	7900	8200	8600	8600	8600
Hitch Dry Weight	1400	1400	1500	1500	1600	1600	1600	1600	1700	1700	1600
Axle Dry Weight	5700	5700	6260	6260	6300	6300	6300	6600	6900	6900	7000
GVWR	9400	9400	9800	9800	10000	10000	10000	10200	11500	11500	11500
Height with A/C	10' 10"	10' 10"	10' 10"	10' 10"	10' 10"	10' 10"	10' 10"	10' 10"	10' 10"	10' 10"	10' 10"
Width	93"	93"	93"	93"	93"	93"	93"	93"	93"	93"	93"
Length	30' 8"	30' 8"	32' 10"	32' 10"	35' 10"	35' 10"	35' 10"	38' 6"	39' 10"	39' 10"	39' 10"
Sleeping Accom.	6	6	6	6	6	6	6	6	6	6	6

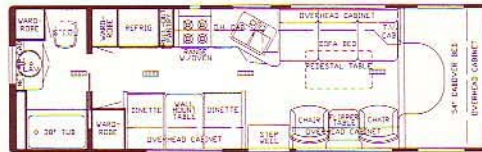
Approximate Weights. GVWR = Gross Vehicle Weight Rating. Charts Are Based on Standard Units.

MINI HOMES Specifications & Floor Plans

28 RBRD



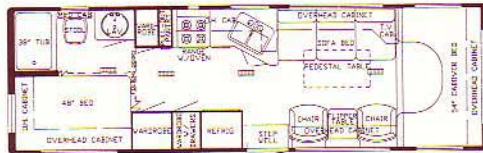
28 RBD



Only 28 WCB



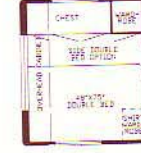
28 SB



28 WCB



Only 28 WCB

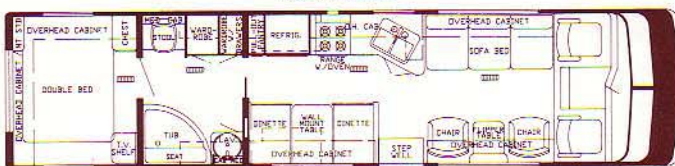


Dimensions	28 RBRD	28 RBD	28 SB	28 WCB
Gross Dry Weight	12425	12110	12100	12200
Dry Weight Front Axle	4075	3620	3800	3800
Dry Weight Rear Axle	8350	8490	8300	8400
GVWR	15000	15000	15000	15000
Height with A/C	10' 10"	10' 10"	10' 10"	10' 10"
Width	93"	93"	93"	93"
Length	28' 5 1/2"	28' 5 1/2"	28' 5 1/2"	29' 2"
Sleeping Accom.	4	6	6	6

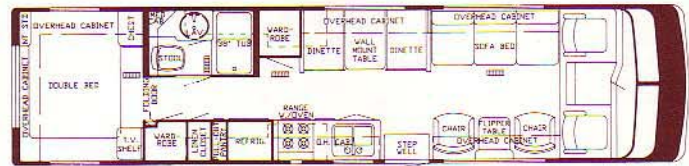
Approximate Weights. GVWR on MH based Chevy Chassis. GVWR = Gross Vehicle Weight Rating. Charts Are Based on Standard Units.

CLASS A MOTORHOME Specifications & Floor Plans

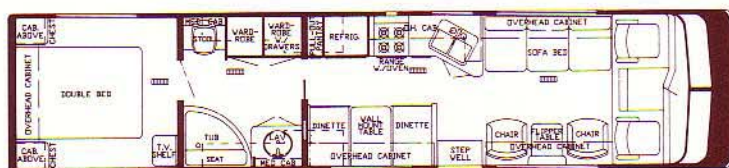
33 WCB



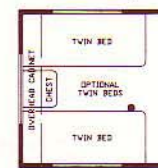
33 CBD



37 WCB



Twin Bed Option



Dimensions	33 WCB	33 CBD	37 WCB
Gross Dry Weight	14000	14000	15125
Dry Weight Front Axle	4150	4150	4475
Dry Weight Rear Axle	9850	9850	10650
GVWR	18000	18000	18000
Height with A/C	11'	11'	11'
Width	93"	93"	93"
Length	34' 7"	34' 7"	37' 5"
Sleeping Accom.	6	6	6

Approximate Weights. GVWR on MH based Chevy Chassis. GVWR = Gross Vehicle Weight Rating. Charts Are Based on Standard Units.

KOUNTRY AIRE Towable and Motorized Standards and Options

Retail

AIR CONDITIONING, HEATING & LP GAS

FW	MI	CA	Cost	
S	S	S		Air Cond. Central Coleman 13.5 BTU w/Wall Thermostat (1)
O	NA	O	\$795	Air Cond. Central Coleman 13.5 BTU w/Wiring and Wall Thermostat (Extra)
NA	NA	O	\$1,190	Dual Fuel Conversion w/32 Gal. LP Tank ILO 15 Gal. — Ex. CAL.
NA	NA	S		Furnace 31M Electronic Ignition (Excalibur)
NA	O	NA	\$383	Furnace 20M Electronic Ignition in Bedroom (Excalibur)
S	S	NA		Furnace 35M Electronic Ignition (Excalibur)
S	S	S		Heat Under Floor Ducted
NA	NA	NA	\$230	Heater Auxiliary in Bedroom
O	O	NA	\$243	LP Gas Bottles 2-30# Alum. w/Gauges ILO 30# Steel
S	S	NA		LP Gas Bottles 2-30# Steel w/Auto. Reg.
NA	O	NA	\$303	LP Gas Bottles 2-40# Alum. w/Gauges ILO 30# Steel
NA	O	NA	\$47	LP Gas Bottles 2-40# Steel ILO 30# Steel
NA	NA	S		LP Gas Tank 15 Gal.
NA	NA	O	\$122	LP Gas Tank 32 Gal. ILO 15 Gal.
O	O	NA	\$47	LP See Level Gauges (set of 2)

APPLIANCES & ACCESSORIES

S	S	S	S		Bath Acc. (towel bar, soap dish, tis. hldr. & towel ring)
O	O	O	O	\$35	Clothes Line in Tub/Shower (Retractable)
S	S	S	S		Decorative Tile Recessed in Kitchen Counter
S	S	S	S		Faucet for Lavatory Dbl. Handle Mixing (Brass)
S	S	S	S		Faucet for Shower Dbl. Handle w/Spigot (Brass)
S	S	S	S		Faucet for Sink Single Handle (Chrome)
O	O	O	O	\$271	Food Center Nutone (Blender)
O	O	O	O	\$60	Ice Maker Prep
O	O	O	O	\$658	Ice Maker (110V)
S	S	S	S		Magazine Rack in Bath Area (where applic.)
O	O	O	O	\$1,044	Microwave Oven Conv. (Sharp) w/4 Burner Plate ILO Std. Range
O	O	O	O	\$751	Microwave Oven Spacemaker GE
O	O	O	O	\$459	Microwave Oven (Sharp Carousel)
S	S	S	S		Microwave Prep 22 1/4" W x 15" H
S	S	S	S		Range 4-Burner 22" w/Pilot Top & Oven
S	S	S	S		Range Cover Bi-Fold Deluxe
S	S	S	S		Range Hood w/Light & Fan
O	O	O	O	\$259	Refri. Dometic 3801 AES ILO Norcold (3-Way)
S	S	S	S		Refri. Norcold 3-Way w/Flush Door
O	O	O	O	\$362	Safe (where applic.)
O	O	O	O	\$247	Shower Stall ILO Std. (where applic.)
NA	NA	S	S		Sink Cover Laminated — 1
S	S	NA	NA		Sink Covers Laminated — 2
S	S	NA	NA		Sink Deep Dbl. Porcelain
NA	NA	S	S		Sink Deep Dbl. Stainless
S	S	S	S		Sink Large Lavatory
S	S	S	S		Stool Aqua Magic Starlite
O	O	NA	NA	\$73	Tub 40" ILO 54" w/Remainder Wardrobe ILO Std. (where applic.)
S	S	S	S		Tub Fiberglass w/Enclosure Door
O	O	O	O	\$203	Tub Fiberglass Garden Style w/Enclosure Door ILO Std. (where applic.)
O	O	O	O	\$166	Vacuum System Portable
O	O	NA	NA	\$984	Washer & Dryer (see floor plans)
O	O	NA	NA	\$200	Washer/Dryer Prep — Plumbing, Recept. & Shelf (certain models)
O	O	O	O	\$44	Water Heater Bypass Kit
NA	NA	S	S		Water Heater Gas 6 Gal. w/Elect. Ign.
S	S	NA	NA		Water Heater Gas/Elect. 10 Gal.
O	O	NA	NA	\$70	Water Heater Reignor 12V
O	O	O	O	\$152	Water Purifying System (Drink Dispenser & Icemaker)

CABINETS & FURNITURE

O	O	NA	NA	\$52	Bar (Table Height) ILO Dinette
S	S	S	S		Bed Double (see floor plan)
O	O	NA	O	\$86	Bed Queen (60" x 75") (where applic.)
O	O	O	O	\$153	Bed Twin (32" x 75") ILO Double
S	NA	NA	NA		Bookcase Cab. w/TV Shelf (where applic.)
O	O	NA	NA	\$311	Bunk Stationary 32" w/4" Foam Matt. (where applic.)
NA	S	NA	NA		Cabinet China w/Decorative Glass Door(s) (see floor plan)
S	S	S	S		Cabinet Medicine w/Mirror Doors
S	S	S	S		Cabinet Night Stand(s) (see floor plan)
O	O	NA	O	\$153	Cabinet Overhead Extra (ea.)
S	S	S	S		Cabinetry Oak w/Raised Panel Doors
S	S	S	S		Catches Spring w/Double Roller
O	O	NA	NA	\$265	Chair Free Stding. Pedestal (where applic.)
O	O	NA	NA	\$395	Chair Recliner w/Foot Rest
O	O	NA	NA	\$311	Chair Swivel Rocker Except RKD (see floor plan)
NA	O	NA	NA	\$307	Chairs Free Stding. Incliner w/End Table & Light in 94" S1 Our ILO Sofa
NA	NA	S	S		Chair(s) Barrel (where applic.)
NA	S	NA	NA		Chair(s) Free Standing Pedestal WRKD
O	O	O	O	\$40	Counter Top Extension (where applic.)

Retail

CABINETS & FURNITURE Continued

TT	FW	MI	CA	Cost	
NA	O	NA	NA	\$259	Deluxe Honeymoon Suite Bedroom w/88" Wardrobe (Must Have SS)
O	O	NA	NA	\$39	Dinette Free Standing w/2 Chairs ILO Built-In
S	S	S	S		Dinette w/Flex-a-lator & Fabric Covered Ends (see floor plan)
S	S	S	S		Door(s) under Dinette for Easy Access
S	S	S	S		Drawer Wood w/Silverware Tray
O	O	O	O	\$162	Drawers Wood w/Metal Guides & Side Rollers
S	S	S	S		Drawers Wood w/Roller Guides
NA	NA	O	NA	\$120	Entertainment Center ILO Curtains, Matt. & Windows
NA	O	NA	NA	\$327	Entertainment Center w/30" Rear Window (where applic.)
S	S	NA	NA		Hamper/Storage (see floor plan)
O	O	NA	NA	\$399	Headboards Decorative (where applic.)
S	S	S	S		Love Seat 64" ILO Sofa w/2 Chests & Lights (where applic.)
S	S	S	S		Pantry Slide-Out (see floor plan)
NA	NA	NA	S		Seat Driver 6-way Power Swivel & Recliner
NA	NA	S	NA		Seat Driver/Passenger Swivel & Recliner
NA	NA	NA	O	\$383	Seat Passenger 6-way Power Swivel & Recliner
NA	NA	S	S		Snack Tray on Engine Cover w/Cassette Holder
NA	NA	S	S		Sofa Bed Built-In (where applic.)
S	S	NA	NA		Sofa Bed Free Standing (where applic.)
S	S	S	S		Spice Rack (Hand Crafted)
O	O	NA	NA	\$192	Spring Lifts for Convenient Storage Under Fixed Beds
NA	NA	S	NA		Table Dropleaf Hi-Lo (for coffee or din.)
NA	NA	S	S		Table Free Standing Pedestal (see floor plan)
O	NA	S	S	\$114	Table/Chest w/Cup Holder Between Chairs (where applic.)
NA	O	NA	NA	\$78	Wardrobe Shirt Length (ea.) (where applic.)
NA	O	NA	NA		Wardrobe/Delete & Add Front Entrance Door 26"

CHASSIS FEATURES

NA	NA	S	S		Brakes Power
NA	NA	NA	S		Chevy Chassis
NA	NA	S	S		Cruise Control
NA	NA	S	NA		Ford Chassis (460 CID)
NA	NA	S	NA		Gasoline Fuel Capacity 42 Gal. (Ford)
NA	NA	NA	S		Gasoline Fuel Capacity 78 Gal. (Chevy)
NA	NA	S	S		Heater/Air Conditioner High Output Automotive
NA	NA	NA	O	\$798	John Deere Chassis (460 CID Ford Engine) w/Michelin Rad.
NA	NA	S	NA		Power Window & Door Locks Driver & Passenger
NA	NA	S	S		Power Steering
NA	NA	NA	S		Steering Wheel Custom Padded Leather (Chevy)
NA	NA	S	S		Steering Wheel Tilt
NA	NA	S	S		Transmission Automatic
NA	NA	S	S		Transmission Cooler
NA	NA	S	S		Windshield Tinted

ELECTRICAL & LIGHTING EQUIPMENT

S	S	S	S		Battery 115 amp Sears Die Hard (1)
O	O	O	O	\$74	Battery 115 amp Sears Die Hard (ea.)
NA	NA	S	S		Battery Automotive
S	S	NA	NA		Battery Box on Slides
NA	NA	O	O	\$210	Battery Disconnect
NA	NA	S	S		Battery Isolator
NA	NA	O	O	\$247	CB Radio w/Antenna
S	S	S	S		Convertor 40 amp w/Charger
O	O	O	O	\$31	Convertor 50 amp w/Charger
S	S	S	S		Electrical Service 30 amp
O	O	NA	O	\$173	Electrical Service 50 amp ILO 30
NA	NA	NA	O	\$129	Fans Defroster Driver & Passenger (built in)
NA	O	NA	NA	\$2,520	Gen. 4.0 kw Onan w/1 Remote Sw., Gas Tank & Auto. Changeover
NA	NA	O	NA	\$2,414	Gen. 4.0 kw Onan w/1 Remote Sw. & Auto. Changeover
NA	O	NA	NA	\$3,744	Gen. 6.5 kw Onan w/1 Remote Sw., Gas Tank, Auto. Changeover & Battery
NA	NA	NA	O	\$3,584	Gen. 6.5 kw Onan w/2 Remote Sw. & Auto. Changeover
NA	O	NA	NA	\$227	Gen. Gasoline Tank
NA	O	S	S	\$130	Gen. Prep (auto. changeover, battery/cable, remote start wire & door)
NA	NA	NA	S		Horn Trumpet (on roof)
O	O	NA	NA	\$114	Intercom System
S	S	NA	S		Light at Gate Valve Area
S	S	S	S		Light Exterior Patio w/Inside Switch
S	S	S	S		Light Fixture Deluxe Over Dinette
S	S	NA	NA		Light for Hookup Convenience
NA	NA	NA	S		Light Remote Controlled (roof spot/flood)
NA	NA	NA	S		Light under Hood
S	S	S	S		Lighting 12-Volt Fluorescent (w/Wall Switches)
S	S	S	S		Lights 10" Tube Behind Glass Doors
NA	NA	NA	O	\$211	Lights Docking (Recessed in Side Wrap)
O	O	O	O	\$35	Lights Exterior Security (ea.)
NA	NA	O	O	\$104	Lights Fog
S	S	S	S		Lights in Wardrobe w/Automatic Switches
NA	NA	O	S	\$60	Lights Interior Courtesy
S	S	S	S		Lights Running & Backup Recessed

Retail				ELECTRICAL & LIGHTING EQUIPMENT Continued			
TT	FW	MI	CA	Cost			
S	S	S	S		Monitor Panel Deluxe w/Clock		
O	O	NA	NA	\$ 17	Plug & Bracket for Tow Vehicle		
S	S	S	S		Radio/Ant., AM/FM Stereo Cass., Clock & 4 Spkr.		
					(CB Models 6 Spkr.)		
S	S	S	S		Recept. 110V GFI (interior & exterior)		
O	O	O	O	\$ 15	Recept. 110V (extra)		
O	O	O	O	\$ 15	Switch 110V (extra)		
NA	NA	NA	S		Switch for Emergency Chassis Engine Start		
S	S	S	S		Switch Shut-off for Bedroom Speakers		
O	O	O	O	\$ 27	Telephone Jack Extra (Choose Location)		
O	O	O	O	\$113	Telephone Jack & Cable TV Hookup (Choose location)		
NA	NA	NA	S		Trip Meter for Convenience Mileage Check		
S	S	S	S		TV Antenna w/Power Booster & 2 Jacks		
NA	NA	O	S	\$392	TV Color AC 13" w/Remote Control (Living Area Built In)		
O	O	O	O	\$ 33	TV Jack Exterior on Door Side		
O	O	O	O	\$ 48	TV Jack w/Splitter (extra)		
NA	NA	NA	O	\$1,843	TV Monitor Closed Circuit Rear View & Backup Lights		
S	S	NA	S		TV Shelf/Mirror w/Remote Shut-off Switch (bedroom where applic.)		
O	O	O	O	\$ 70	VCR Prep		
O	O	O	O	\$469	VCR w/Newmar Tape		

EXTERIOR ACCESSORIES

NA	NA	S	S		Bumper Front Auto. Style w/Chrome Grill		
S	S	S	S		Bumper Rear Auto. Style w/Storage Comp.		
S	S	S	S		Exterior Front & Rear Gelcoated Fiberglass End Caps		
O	O	O	S	\$ 39	Exterior Sides Gelcoated Fiberglass (per ft.)		
O	O	O	O	\$173	Ladder & Roof Rack		
S	S	NA	NA		LP Gas Bottles in Concealed Compartment		
NA	NA	S	NA		Mirrors Exterior		
NA	NA	NA	O	\$210	Mirrors Exterior w/Convex, Remote Control, Defrost & Turn Sig.		
NA	NA	NA	S		Mirrors Exterior w/Convex & Defrost		
NA	O	NA	NA	\$222	Raised Floor Bath w/Large Carpeted Storage Area & Lights		
O	O	O	O	\$ 20	Roof Gelcoated Fiberglass (per ft.)		
NA	NA	S	NA		Running Boards Aluminum		
NA	NA	O	NA	\$213	Running Boards Fiberglass ILO Std.		
O	O	NA	NA	\$2,640	Slide Out 74" w/Lights (Choose Cabinet Selection)		
O	O	NA	NA	\$2,786	Slide Out 94" w/Lights (Choose Cabinet Selection)		
NA	NA	NA	S		Spoiler Deluxe Incorpor. w/Front Bumper		
NA	NA	S	S		Step Double 12-Volt Auto. w/Non-Skid Surface		
S	S	NA	NA		Step Double w/Non-Skid Surface		
O	O	NA	NA	\$192	Stone Guard Pull-Down Vinyl (Exclusive)		
S	S	S	S		Storage Exterior Compartment(s)		
O	O	S	O	\$200	Storage Exterior Slide-out Drawer 29"		
NA	NA	NA	S		Storage Exterior Slide-out Drawer 35"		
S	S	NA	S		Storage Exterior Slide-out Drawer 48"		
O	O	O	O	\$246	Storage Roof Pod 10 cu. ft.		
O	O	O	O	\$384	Storage Roof Pod 21 cu. ft.		

INTERIOR FEATURES

O	O	O	O	\$126	Bedsprad(s) Quilted w/Matching Shams & Accent Pillow Dbl.		
O	O	NA	O	\$133	Bedsprad(s) Quilted w/Matching Shams & Accent Pillow Queen		
O	O	O	O	\$146	Bedsprad(s) Quilted w/Matching Shams & Accent Pillow Twin		
S	S	S	S		Cabinet Doors w/Decorative Etched Glass		
NA	NA	O	O	\$ 25	Ceiling Vinyl Automotive Headliner ILO Soft Touch		
S	S	S	S		Ceiling Woven Soft Touch		
NA	NA	S	S		Door Header Cushioned		
S	S	S	S		Floor Covering, Carpet w/1/16" Deluxe Pad Throughout		
O	O	O	O	\$359	Floor Covering, Hardwood Parquet in Kitchen Area ILO Carpet		
O	O	NA	NA	\$ 39	Floor Covering, Vinyl in Kitchen Area ILO Carpet		
S	S	S	S		Interior Height 6'6"		
S	S	S	S		Mirror(s) Bevelled & Etched w/Decorative Wood Frame		
S	S	S	S		Paneling Decorative Vinyl in Bath Area		
S	S	S	S		Paneling Decorative Vinyl in Living Area		
S	S	S	S		Paneling Textured Light Color in Bedroom		
NA	NA	S	S		Privacy Drapes (lined) for Windshield		
NA	S	NA	NA		Stand-Up Area in Front Bedroom		
S	S	S	S		Window Garnish Wood Grain (Residential Style)		
S	S	S	S		Window Treatmt. Mini Blinds (Kitchen & Bath)		
S	S	S	S		Window Treatmt. Roller Shades w/Draper, Val. & Tie Backs (bedroom)		
S	S	S	S		Window Treatmt. Soft Shade Blinds w/Draper, Val. & Tie Backs (liv. area)		

PLUMBING SYSTEMS

O	O	NA	NA	\$379	Heat Pads for Holding Tanks		
S	S	S	S		Hook-Up for City Water		
S	S	O	O	\$120	Insulated Holding Tanks		
O	O	O	O	\$ 60	Sewage Holding Tank Rinse		
S	S	S	S		Sewage Hose Holder		
NA	NA	S	NA		Tank Gray Water 25 Gal. (Approx.)		
NA	NA	NA	S		Tank Gray Water 30 Gal. (Approx.)		
S	S	NA	NA		Tank Gray Water 45 Gal. (Approx.)		
NA	NA	S	NA		Tank Sewage Holding 25 Gal. (Approx.)		
NA	NA	NA	S		Tank Sewage Holding 40 Gal. (Approx.)		

Retail				PLUMBING SYSTEMS Continued			
TT	FW	MI	CA	Cost			
S	S	NA	NA		Tank Sewage Holding 45 Gal. (Approx.)		
S	S	S	NA		Water Capacity 42 Gal. (Approx.)		
NA	NA	NA	S		Water Capacity 54 Gal. (Approx.)		
S	S	S	S		Water System Demand w/12V Pump & 3/8" Polybutylene Lines		

RUNNING GEAR & CONSTRUCTION

S	NA	NA	NA		Axle 4" Drop w/12" Brakes		
NA	S	NA	NA		Axle Straight w/12" Brakes		
S	S	S	S		Floor 1" Laminated Plywood		
S	S	NA	NA		Frame Size 8" I-Beam		
NA	NA	O	O	\$286	Hitch for Towing Car w/Wire Connector		
NA	O	NA	NA	\$258	Hitch Plate & Bracket 12000 LB (48" or 54" Except 40")		
NA	O	NA	NA	\$331	Hitch Plate & Bracket Heavy Duty 48" (40" only)		
S	S	S	S		Insulation 1/4" Fome-Cor Exterior Roof		
S	S	NA	NA		Insulation 1/4" Fome-Cor Exterior Sidewalls (w/Metal only)		
S	S	S	S		Insulation Additional R5 Fiberglass in Roof & Floor		
S	S	S	S		Insulation Laminated 3/8" Foam in Sidewalls & Ceiling		
S	S	S	S		Insulation R5 Fiberglass in Sidewalls, Roof & Floor		
S	NA	NA	NA		Jack for Hitch (2000#)		
NA	NA	S	S		Jack Hydraulic — 6 Ton		
NA	NA	NA	O	\$1,200	Jacks Auto. Hydraulic Leveling ILO Std.		
NA	NA	NA	S		Jacks Hydraulic Leveling		
NA	O	NA	NA	\$120	Jacks Stabilizer Extra (set of 2)		
NA	S	NA	NA		Jacks Stabilizer (set of 2)		
S	NA	NA	NA		Jacks Stabilizer (set of 4)		
O	O	NA	NA	\$549	Jacks Stabilizers 12V Power Twins ILO Std. (set of 2)		
O	O	NA	NA	\$227	Jack(s) for Hitch 12V Power		
O	O	NA	NA	\$ 16	Jack(s) for Hitch Prep 12V Wire		
NA	NA	S	S		Mud Flaps (front & rear)		
S	S	S	S		Shock Absorbers		
S	S	S	S		Skid Bars for Rear Bottom Protection		
S	S	S	S		Spare Tire in Bumper Slide-out Tray		
NA	O	NA	NA	\$130	Stabilizer for Fifth Wheel Pin (Excl. Built-in)		
S	S	S	S		Structure Aluminum 16" Centers Sidewalls & Roof		
NA	NA	S	S		Suspension w/Tag Axle (Except John Deere Chassis)		
NA	NA	NA	O	\$1,647	Suspension Single Axle Mor ryde for John Deere Chassis		
S	S	NA	NA		Tires 8.55x15 W/W		
NA	NA	NA	O	\$ 56	Tires Michelin Radial (ea. where applic.)		
O	O	NA	NA		Tires Polyester — Chevy		
O	O	NA	NA	\$ 73	Tires Radial 16" ILO Std. (ea.)		
NA	NA	S	NA		Tires Radial — Ford		
S	S	NA	NA		Underbelly Enclosed w/Lam. 3/8" Foam & Gate Valve		
NA	NA	S	NA		Insp. Plate		
NA	NA	NA	S		Wheel Covers Decorative Deluxe		
S	S	NA	NA		Wheel Simulators Deluxe Stainless		
NA	NA	NA	O	\$235	Wheels 15" White Spoke		
					Wheels Polished Aluminum (ea.)		

SAFETY FEATURES

S	S	NA	NA		Break-Away Switch		
O	O	O	O	\$665	Customer Pick Up		
NA	O	O	NA	\$154	Door in Front Bedroom Wardrobe (escape type)		
O	O	O	O	\$ 11	Fire Extinguisher 10 BC ILO 5 BC		
S	S	S	S		Fire Extinguisher 5 BC		
O	O	O	O	\$ 55	LP Leak Detector		
S	NA	NA	NA		Safety Chains		
NA	NA	S	S		Seat Belts		
NA	NA	S	NA		Seat Belts w/Shoulder Straps (Driver & Pass. Seats)		
S	S	S	S		Smoke Detector		
O	O	O	O		State Seals		

WINDOWS, DOORS, AWNINGS & VENTS

S	NA	NA	NA		Awning Front Recessed		
O	O	O	O	\$186	Awning Per Window Matching Side Awning (Carter Deluxe or A & E 9000)		
O	O	O	O	\$132	Awning Per Window Matching Side Awning (Carter Carefree or A & E 8000)		
O	O	NA	NA	\$222	Awning Rear Recessed (where applic.)		
O	O	O	O	\$658	Awning Side A & E 8000 (up to 21')		
O	O	O	O	\$924	Awning Side A & E 9000 (up to 21')		
O	O	O	O	\$632	Awning Side Carefree Spirit (up to 21')		
O	O	O	O	\$791	Awning Side Carter Deluxe w/Chrome Cover (up to 21')		
O	O	O	O	\$632	Awning Side Carter (up to 21')		
O	O	O	O	\$ 85	Awning Tension Rafter for Side Awning		
O	O	O	O	\$ 31	Door Bell		
NA	NA	NA	S		Door Driver Side w/Dead Bolt Lock		
NA	NA	S	S		Door Entrance Radius w/Screen 26" w/Flush Latch & Dead Bolt Lock		
S	S	NA	NA		Door Entrance Radius w/Screen 30" w/Flush Latch & Dead Bolt Lock		
NA	NA	NA	O	\$432	Door Passenger w/Dead Bolt Lock		
S	NA	NA	NA		Door Secretary 26" Radius w/Dead Bolt Lock (where applic.)		
S	NA	S	S		Door Woven Folding (where applic.)		
S	S	S	S		Grab Handle		
S	S	S	S		Screens All Windows		
O	O	O	O	\$174	Skylight in Bathroom w/Soft Shade		
S	S	S	S		Vent in Bath Area w/Wall Switch 12V		
O	O	O	O	\$ 81	Vent in Ceiling 12V		

TT	FW	MI	CA	Retail Cost	WINDOWS, DOORS, AWNINGS & VENTS Continued
O	O	O	O	\$233	Vent in Ceiling 12V Fantastic 3-Spd. w/Wall Thermostat
S	S	NA	NA		Window Frosted Glass 15" x 24" Bathroom (where applic.)
NA	NA	NA	O	\$126	Window ILO Bevelled Mirrors in Bedroom (37' only)
NA	NA	S	NA		Window 12" x 60" Front Cab Over
S	S	S	S		Window Radius Picture 30" x 48" at Dinette
O	O	NA	NA	\$166	Window Radius Picture 48" x 24" (ea.) (where applic.)
O	O	NA	NA	\$198	Window Radius Picture 48" x 36" (ea.) (where applic.)
O	O	NA	NA	\$209	Window Radius Picture 48" x 48" (ea.) (where applic.)
NA	NA	S	S		Windows Radius Slider Tinted Safety Glass
S	S	NA	NA		Windows Radius Torque Tinted Safety Glass
O	O	NA	NA	\$525	Windows Safety Glass Storms (Except Slide Out)
O	O	NA	NA	\$ 68	Windows Safety Glass Storms (for Slide Out only)

Newmar Kountry Klub

"Don't forget to check out the Klub... the Newmar Kountry Klub that is. All you need to be eligible is to be the proud owner of any one of the fine Newmar products!"

LEGEND

FLOOR PLANS

CBD — Center Bath/Dinette
FKD — Front Kitchen/Dinette
RB — Rear Bath
RBRD — Rear Bath/Rear Door
RBD — Rear Bath/Dinette
SB — Side Bath
WCB — Walk-Thru Center Bath
WCBD — Walk-Thru Center Bath/Dinette
WDKD — Walk-Thru Door Side Kitchen/Dinette
WD — Walk-Thru Bath/Dinette
WRKD — Walk-Thru Rear Kitchen/Dinette

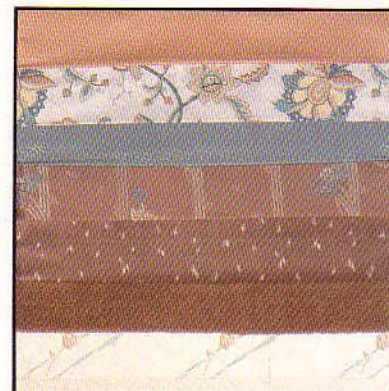
SPECIFICATIONS

CA — Class A
dbl. — Double
Ex CAL — Except California
FW — Fifth Wheel
ILO — In Lieu Of
Lam. — Laminated
MI — Mini Home
NA — Not Available
O — Option
S — Standard
TT — Travel Trailer
V — Volt
W/W — White Wall

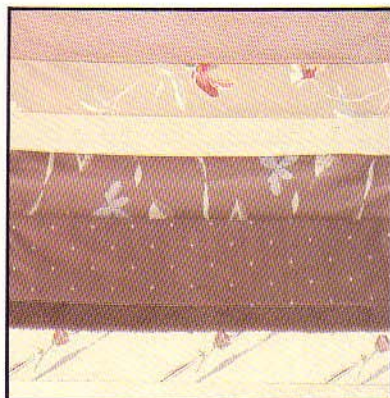
KA-8-46
Sandlewood Buff



KA-8-48
Peach Bisque



KA-8-47
Mauve Quartz



KA-8-49
Sapphire Sky





Fifth Wheel Entertainment Center (Optional)

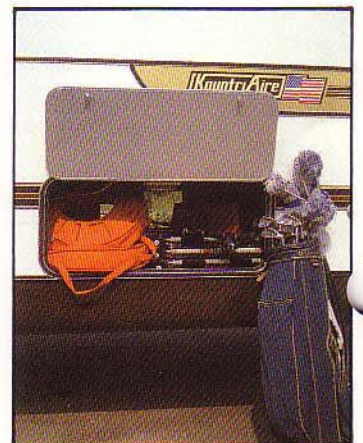


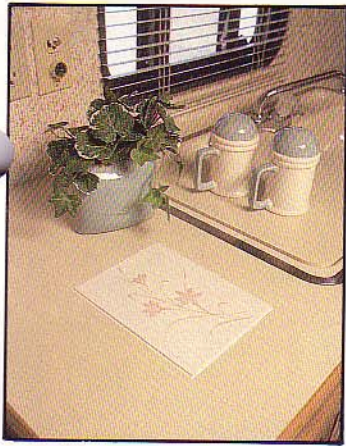
Fifth Wheel
Garden Tub (Optional)



Correlated Wood
Window Casings

Large Radiused Door
Exterior Storage
Compartment
(Optional)





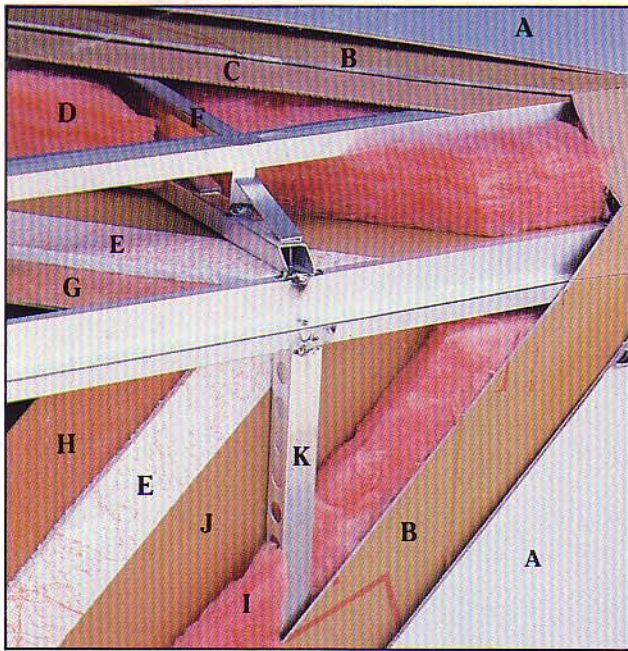
Decorative Recessed
Ceramic Tile



Double Incliners with
Solid Oak Drawer Chest
and Brass Lamp (Optional)

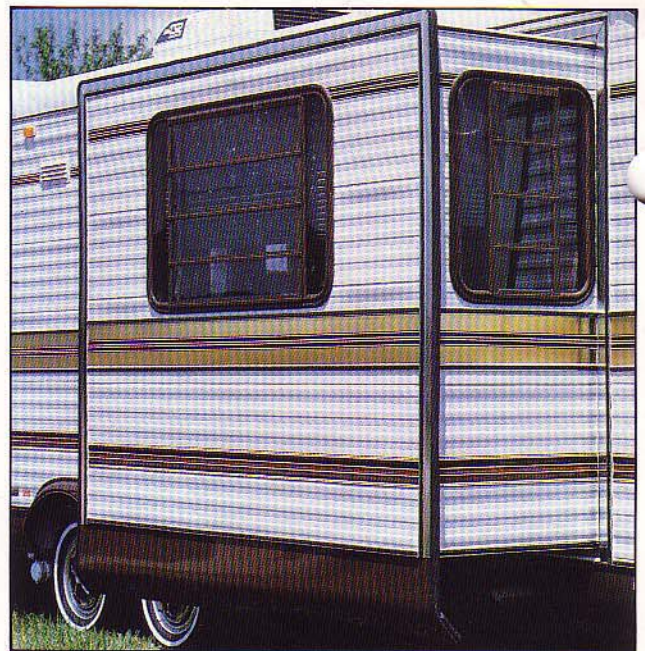


Class A Cockpit

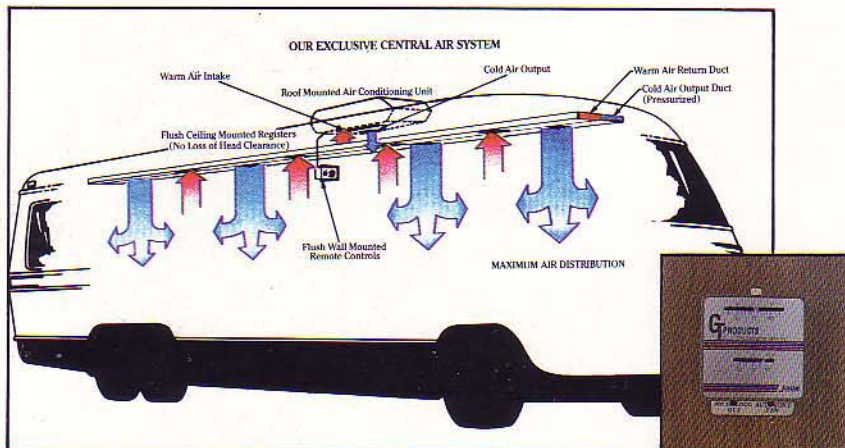
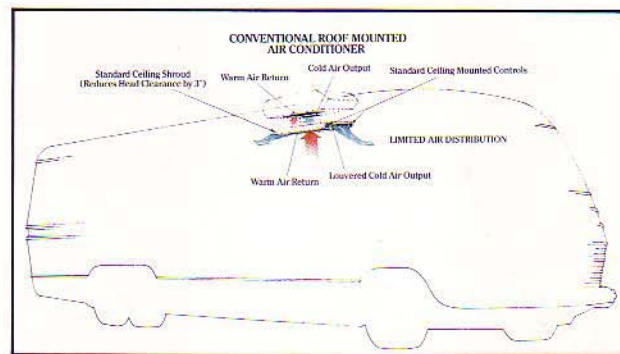


KOUNTRY AIRE ALUMINUM SUPERSTRUCTURE

- A Fiberglass or Aluminum Exterior (see specs)
- B Fome-Cor Insulation
- C Plywood Backer
- D R-10 Fiberglass Insulation
- E $\frac{3}{8}$ " Bead Foam Insulation
- F Truss Style Roof Rafter 16" Center
- G Ceiling Material
- H Interior Paneling
- I R-5 Fiberglass Insulation
- J Craft Paper
- K $1\frac{1}{2}$ " Aluminum C Channel



Optional Power Slide Out



Remote Thermostatically Controlled "On/Off"



Standard Sliding Bumper Tray/Spare Tire Carrier

Your nearest Kountry Aire dealer:



Newmar Corporation, 355 North Delaware
Nappanee, IN 46550-0030, (219) 773-7791
Scheduled plant tours Monday-Friday

Prices and specs are subject to change without written notice
at Newmar's discretion with no obligation.