

88
"Coast to Coast with **AMERICAN**
no RESERVATIONS!" *Star*

1988



*Newmar Corporation: A sound company
backed by 20 years of experience.*

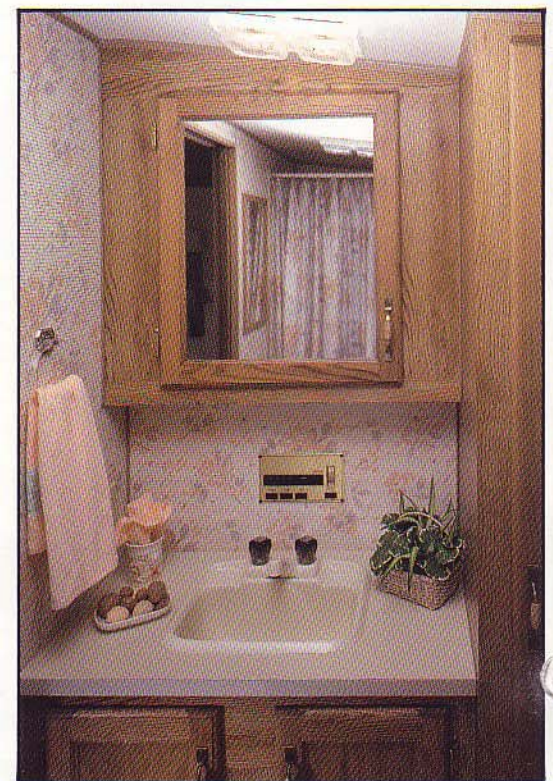
BY **Newmar Corp.** 



Fifth Wheel Living Area



Fifth Wheel Bedroom



Fifth Wheel Bath



Fifth Wheel Galley

“Coast to Coast with no RESERVATIONS!”

Hey America, what are you waiting for? Your ship just rolled in at your nearest American Star dealership departing from any port in the U.S.A., **Coast to Coast with No Reservations!** See all the great sights in a quality RV everyone can afford, an American Star recreational vehicle.

Newmar Corporation designed this line with everyone in mind. Here's an affordable coach that will allow American families everywhere the chance to enjoy RVing for the first, or many times to come in security, comfort and freedom. No reservations are necessary when you take along the only accommodations you'll need, and in a style that's comparable to any RV on the road today, inside and out.

As an up and coming Star to the many varieties and price ranges of the Newmar family of products, **American Star offers so many conveniences as standard, you'll expect to pay a lot more than the modest price on the sticker.** We don't consider American Star as an economy line other than the price, and here are just a few sound reasons that will benefit you as a happy owner.

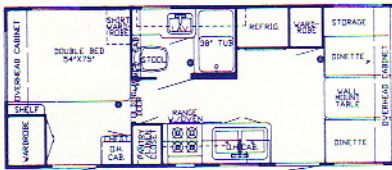
The first and most obvious is that **American Star** is backed by 20 years of experience in the designing and manufacturing of RVs by Newmar Corporation.

Then, just take one look at the professionally designed interiors and exteriors, and these tastefully color-coordinated fabrics and hardware that give the look of the 80's in three color combinations. Don't forget the **solid oak doors and drawers with a myriad of intimate details** that set your Star apart from all the rest.

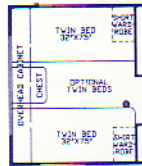
A wide variety of sizes and floor plans in three choices of vehicle styles will leave you with no reservations about which brand to buy this year, just which model to select. After you reserve your order for the American Star of your choice, **American Star invites you to see it all . . . Coast to Coast with No Reservations!**

TRAVEL TRAILER Specifications & Floor Plans

23 CBD



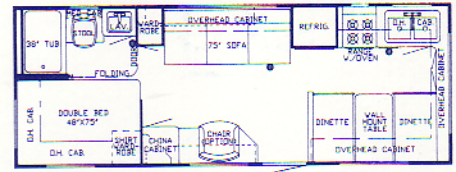
except
25 FKD



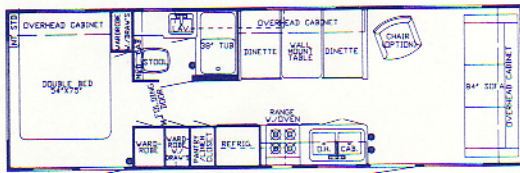
only
25 FKD



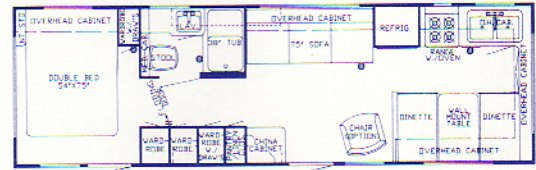
25 FKD



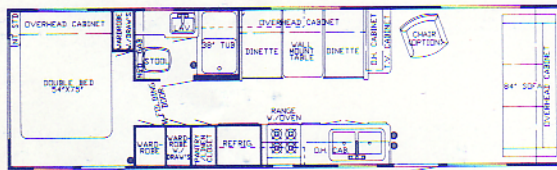
29 CBD



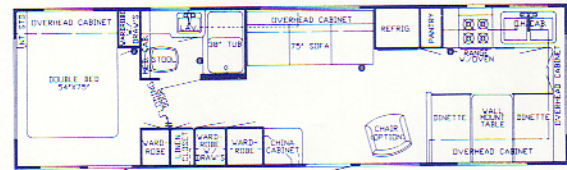
29 FKD



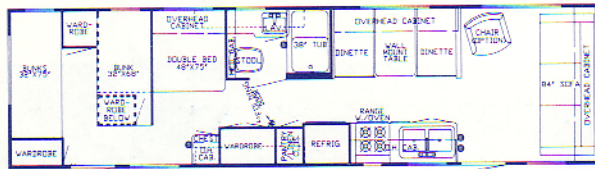
31 CBD



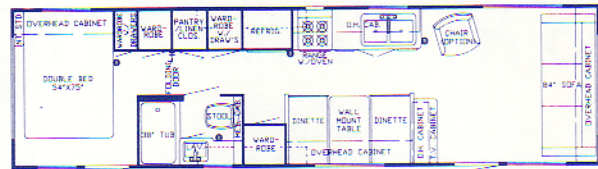
31 FKD



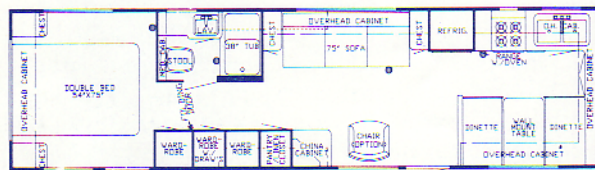
33 CBB



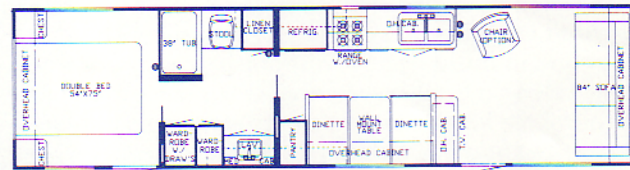
33 CBD



33 FKD



35 CBD

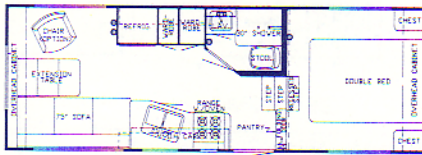


Dimensions	23 CBD	25 FKD	29 CBD	29 FKD	31 CBD	31 FKD	33 CBB	33 CBD	33 FKD	35 CBD
Gross Dry Weight	4190	4220	5190	4890	5312	5312	5600	5600	5670	5790
Hitch Dry Weight	500	330	560	820	652	800	800	800	760	900
Axle Dry Weight	3690	3890	4630	4070	4660	4512	4800	4800	4910	4890
GVWR	6100	6400	7100	7100	7400	7400	7600	7600	7600	7700
Height with A/C	118"	118"	118"	118"	118"	118"	118"	118"	118"	118"
Width	96"	96"	96"	96"	96"	96"	96"	96"	96"	96"
Length	23' 5"	25' 8"	29' 7"	30' 1"	31' 4"	31' 4"	33' 2"	33' 2"	33' 2"	39' 8"
Sleeping Accom./Option	4/1	6	6	6/1	6	6/1	9	6	6/1	6

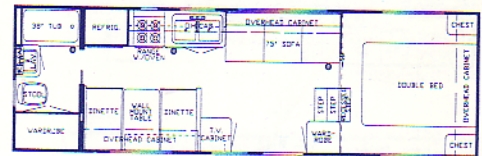
Approximate Weights. GVWR = Gross Vehicle Weight Rating.
Charts Are Based on Standard Units

FIFTH WHEELS Specifications & Floor Plans

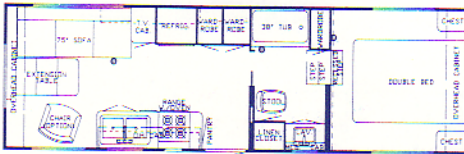
23 FSB



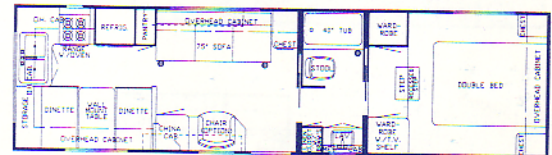
26 RBD



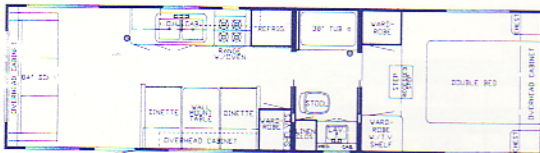
26 W



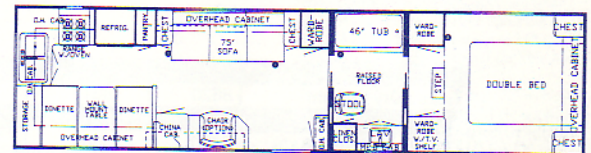
29 WRKD



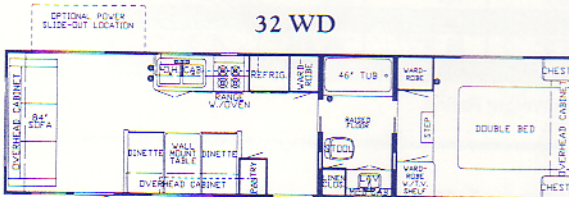
29 WD



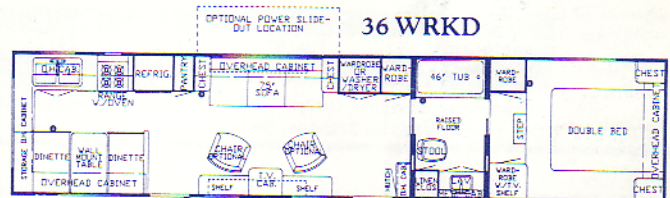
32 WRKD



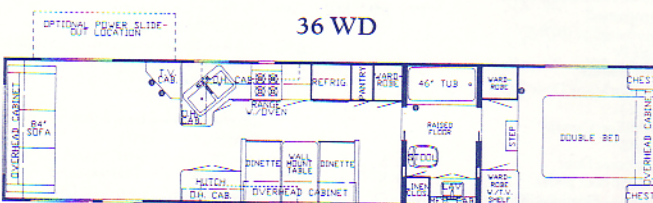
32 WD



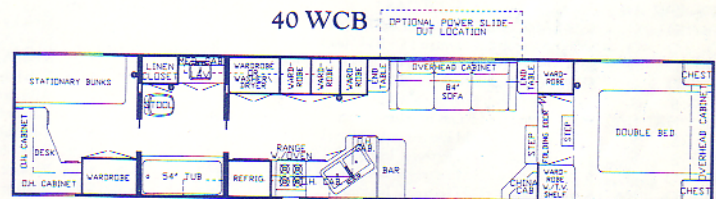
36 WRKD



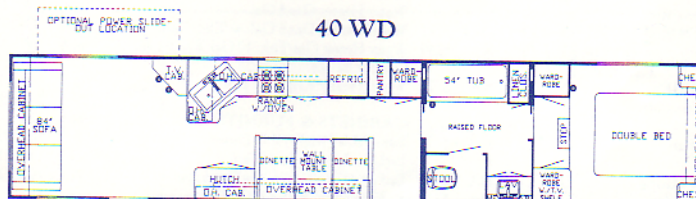
36 WD



40 WCB



40 WD



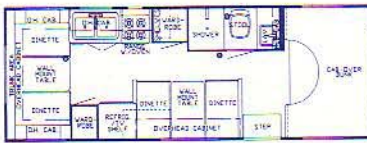
Optional cab over
twin beds

Dimensions	23 FSB	26 RBD	26 W	29 WRKD	29 WD	32 WRKD	32 WD	36 WRKD	36 WD	40 WCB	40 WD
Gross Dry Weight	4700	4900	4960	5650	5770	6500	6500	7380	7360	7400	7400
Hitch Dry Weight	590	830	1040	1170	1130	1500	1500	1530	1640	1700	1700
Axle Dry Weight	4110	4070	3920	4480	4640	5000	5000	5850	5680	5700	5700
GVWR	8700	6700	6700	7700	7700	8200	8200	9300	9300	9500	9500
Height with A/C	120"	120"	120"	120"	120"	127"	127"	127"	127"	127"	127"
Width	96"	96"	96"	96"	96"	96"	96"	96"	96"	96"	96"
Length	23' 10"	26' 5"	26' 5"	29' 11"	29' 11"	32' 3"	32' 3"	36' 10"	36' 10"	39' 10"	39' 10"
Sleeping Accom./Option	4	6	4	6	6	6	6	6	6	6	6

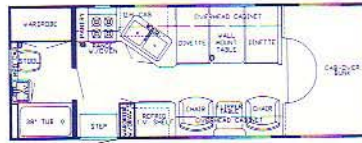
Approximate Weights. GVWR = Gross Vehicle Weight Rating.
Charts Are Based on Standard Units

MINI HOMES Specifications & Floor Plans

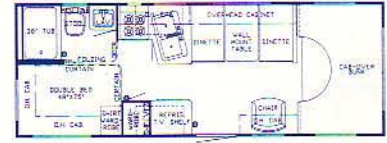
24 DD



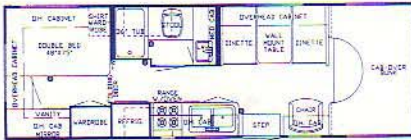
24 RB



24 SB



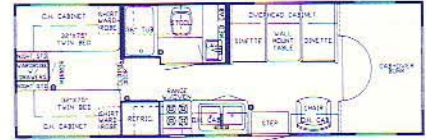
26 CB



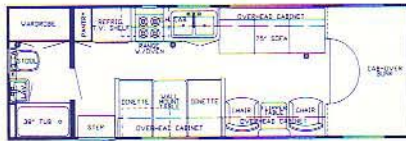
26 CBTC



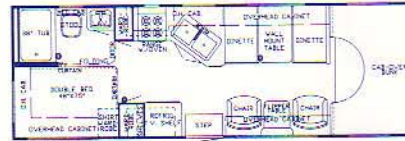
26 CBTW



26 RBD



26 SB



Dimensions	24 DD	24 RB	24 SB	26 CB	26 CBTC	26 CBTW	26 RBD	26 SB
Gross Dry Weight	8620	8610	8620	9200	9200	9200	8600	9270
Dry Weight Front Axle	3140	3060	3140	3850	3650	3650	3270	3700
Dry Weight Rear Axle	5480	5550	5480	5550	5550	5550	5330	5570
GVWR	10500	10500	10500	10500	10500	10500	10500	10500
Height with A/C	127"	127"	127"	127"	127"	127"	127"	127"
Width	96"	96"	96"	96"	96"	96"	96"	96"
Length	24'6"	24'1"	24'7"	26'9"	26'9"	26'9"	26'5 1/2"	26'5 1/2"
Sleeping Accom./Option	6/1	4	6	6	6/2	6/2	6	6

Approximate Weights. GVWR on MH based Chevy Chassis. GVWR = Gross Vehicle Weight Rating.
Charts Are Based on Standard Units

AMERICAN STAR Towable & Motorized Standards & Options

Retail AIR CONDITIONING, HEATING & LP GAS				Retail APPLIANCES & ACCESSORIES				Retail CABINETS & FURNITURE			
TT	FW	MI	Cost	TT	FW	MI	Cost	TT	FW	MI	Cost
O	O	O	\$618	S	S	S		NA	NA	S	
O	O	O	\$658	S	S	S		O	O	O	\$40
O	O	O	\$531	O	O	O	\$32	O	O	NA	\$39
O	O	O	\$571	O	O	O	\$323	NA	NA	O	\$0
S	S	S						S	S	S	
O	NA	NA	\$33	S	S	S					
S	S	S		O	O	O	\$120				
S	S	NA		O	O	O	\$126	S	S	S	
O	O	O	\$47	NA	O	NA	\$984	S	S	S	
O	O	NA	\$67	NA	O	NA	\$200	NA	O	NA	\$231
S	S	S									
O	O	O	\$47	O	O	O	\$44	S	S	S	
S	S	NA		S	S	S		NA	NA	S	
O	O	NA	\$47	O	O	O	\$177	NA	NA	O	\$180
NA	NA	S		O	O	NA	\$149	NA	NA	O	\$48
O	O	O	\$20	O	O	NA	\$70	S	S	S	
S	S	S						S	S	NA	
S	S	S		O	O	NA	\$52	NA	NA	O	\$233
S	S	S		S	S	S		S	S	S	
S	S	S		O	O	NA	\$60	O	O	NA	\$192
S	S	S		O	O	NA	\$110	NA	NA	S	
S	S	S		NA	NA	S					
O	O	O	\$459	O	O	NA	\$279	NA	O	NA	\$33
O	O	O						S	NA	S	
O	O	O	\$33	O	O	NA	\$251				
O	O	O	\$33	NA	S	NA		NA	NA	S	
S	S	S		S	S	S		NA	NA	S	
S	S	S		S	S	S		NA	NA	S	
O	O	O	\$231	S	S	S		NA	NA	O	\$466
O	O	NA	\$418	O	O	NA	\$219	NA	NA	S	
				O	O	NA	\$259	NA	NA	S	
S	S	S		O	O	NA	\$311	NA	NA	S	
S	S	S						NA	NA	S	

Retail ELECTRICAL & LIGHTING EQUIPMENT			
TT	FW	MI	Cost
S	S	S	Battery 115 amp Sears Die Hard (1)
NA	NA	S	Battery Automotive
NA	NA	S	Battery Isolator
S	S	NA	Battery Rack w/Case & Wiring
NA	NA	O	CB Radio w/Antenna
S	S	S	Converter 40 amp w/Charger
S	S	S	Electrical Service 30 amp
O	O	NA	Electrical Service 50 amp ILO 30
NA	NA	O	Gen. 4.0 kw Onan w/1 Remote Switch
NA	O	NA	Gen. 4.0 kw Onan w/1 Remote Switch & Gas Tank (32' & up)
NA	O	NA	Gen. 6.5 kw Onan w/1 Remote Switch & Gas Tank (32' & up)
NA	O	S	Gen. Prep (110 V/wire, remote start wire & door)
S	S	S	Light Exterior Patio w/Inside Switch
S	NA	NA	Light for Hookup Convenience
S	S	S	Lighting 12 Volt Incandescent
NA	NA	S	Lights Backup
NA	NA	O	Lights Fog
S	S	S	Lights Running Surface Mount
O	O	O	Monitor Panel
O	O	NA	Radio/Ant., AM/FM Stereo Cass. & 4 Spkr. (CB Models 6 Spkr.)
NA	NA	S	Radio/Ant., AM/FM Stereo Cass., Clock & 4 Spkr. (CB Models 6 Spkr.)
S	S	S	Recept. 110V GFI (interior & exterior)
O	O	NA	Stereo Prep (antenna & 4 speakers)
S	S	NA	Stereo Prep (wire only)
O	O	O	Telephone Jack Extra (Choose Location)
O	O	O	Telephone Jack & Cable TV Hookup (Choose Location)
S	S	S	TV Antenna Prep (Wire & 1 Jack only)
O	O	O	TV Antenna w/Power Booster
O	O	O	TV Jack Exterior on Door Side
O	O	O	TV Jack Interior Extra (by recept.)
O	O	O	TV Shelf, Jack & Recept. (Choose Location)
EXTERIOR ACCESSORIES			
O	O	O	Bumper Cover Aluminum
NA	NA	S	Bumper Front Auto. Style w/Chrome Grill
S	S	S	Bumper w/Sewer Hose Storage
NA	NA	O	Exterior Front & Rear Gelcoated Fiberglass
NA	NA	O	Exterior Sides Gelcoated Fiberglass (per ft.)
O	O	O	Ladder & Roof Rack
NA	NA	S	Mirrors Exterior
S	S	S	Roof One-Piece Aluminum
NA	NA	O	Running Boards Aluminum
NA	O	NA	Slide Out 74" 12V Power w/Dbl. Frame, Lights & 3 Windows
NA	O	NA	Slide Out 94" 12V Power w/Dbl. Frame, Lights & 3 Windows
O	O	O	Step Double Manual ILO Single
NA	NA	O	Step Single 12 Volt Auto. ILO Std.
S	S	S	Step Single Manual
S	NA	S	Storage Comp. under Bed w/Exterior Door (see floor plan)
S	S	S	Storage Exterior Compartment(s)
NA	O	NA	SS Option (Super Storage) 29'-36'
NA	O	NA	SS Option (Super Storage) 40'
NA	S	NA	SS 25M BTU Excaltar Furnace
NA	S	NA	SS 5200# Axles w/8.55x15 Tires (where applic.)
NA	S	NA	SS 75" Entrance Door
NA	S	NA	SS Double Tubed Frame (40' only)
NA	S	NA	SS Stand up Bedroom (where applic.)

INTERIOR FEATURES			
TT	FW	MI	Cost
O	O	O	Bedsread(s) Quilted w/Matching Shams Dbl.
O	O	NA	Bedsread(s) Quilted w/Matching Shams Queen
O	O	O	Bedsread(s) Quilted w/Matching Shams Twin
S	S	NA	Cabinet Doors w/Decorative Etched Glass
S	S	S	Ceiling Decorative Vinyl Clad
S	S	NA	Floor Covering, Carpet w/Pad Bedroom & Living Room
NA	NA	S	Floor Covering, Carpet w/Pad Throughout
S	S	NA	Floor Covering, Vinyl (except bedrm./living rm.)
O	O	NA	Floor Covering, Carpet w/Pad ILO Vinyl (per ft.)
S	S	NA	Interior Height 6'6"
NA	NA	S	Interior Height 6'9"
S	S	S	Mirror(s) Etched w/Decorative Wood Frame
S	S	S	Mirror(s) w/Decorative Wood Frame
S	S	S	Paneling Decorative Vinyl in Bath Area
S	S	S	Paneling Textured Light Color
NA	NA	S	Privacy Drapes (lined) for Windshield
NA	S	NA	Stand Up Bedroom Area 32'-40'
O	O	O	Window Treatmt. Mini Blinds ILO Std.
S	S	S	Window Treatmt. Mini Blinds (kitchen only)
S	S	S	Window Treatmt. Roller Shade to Match Wall (bath only)
S	S	S	Window Treatmt. Textured Roller Shades w/Tie-Back Drapes/Val.

Retail INTERIOR FEATURES Continued			
TT	FW	MI	Cost
O	O	NA	\$958 XL Package Interior & Exterior
NA	NA	O	\$1,224 XL Package Interior & Exterior
S	S	S	XL Bath Acc. (towel bar, soap dish, tis. hldr. & towel ring)
S	S	S	XL Bedsread(s) Quilted w/Matching Shams
S	S	S	XL Bifold Range Cover
S	S	S	XL Black Glass Door & Larger Oven
S	S	S	XL Black Glass Door on Refer
S	S	S	XL Bumper Cover (Alum.)
S	S	S	XL Ceiling Beams ILO Std. Trim
S	S	NA	XL Chrome Lug Nuts
S	S	S	XL Deluxe Chrome Complexion Light in Bathroom w/Wall Switch
S	S	S	XL Deluxe Din. Light w/Wall Switch
S	S	S	XL Deluxe Oak/Gold Trim Around Ceiling Lights w/Wall Switches
S	S	S	XL Deluxe Oak/Gold Trim on Cornice
S	S	S	Boards Living Area
S	S	S	XL Deluxe Raised Panel Doors ILO Std.
S	S	S	XL Locks Dead Bolt(s)
NA	NA	S	XL LP Gas Bortles Steel 30# ILO 20#
NA	NA	S	XL Mud Flaps
NA	NA	S	XL Snack Tray on Engine Cover
S	S	S	XL Sofa Throw Pillows
S	S	S	XL Spring Lifts for Convenient Storage
S	S	NA	Under Fixed Beds
S	S	NA	XL Step Double Manual ILO Single
NA	NA	S	XL Step Single 12 Volt Auto. ILO Std.
S	S	S	XL Stool Aqua Magic Starlite
PLUMBING SYSTEMS			
S	S	S	Hookup for City Water
NA	NA	O	Insulated Holding Tanks
NA	NA	O	Tank Gray Water 25 Gal. (Approx.)
S	S	NA	Tank Gray Water 40 Gal. (Approx.)
NA	NA	S	Tank Sewage Holding 25 Gal. (Approx.)
S	S	NA	Tank Sewage Holding 40 Gal. (Approx.)
S	S	S	Water Capacity 42 Gal. (Approx.)
S	S	S	Water System Demand w/12V Pump & 1/2" Polybutylene Lines

RUNNING GEAR & CONSTRUCTION			
TT	FW	MI	Cost
S	NA	NA	Axle 4" Drop w/10" Brakes
NA	S	NA	Axle Straight w/10" Brakes (Except 36' & Certain SS Models 12" Brakes)
S	S	S	Floor 2x2 Frame w/3/4" Plywood
NA	S	NA	Frame Size 5" Tube (23'-29')
S	S	NA	Frame Size 5" Tube (up to 25')
NA	NA	O	Frame Size 6" Tube (31' & up)
NA	O	NA	Hitch for Towing Car w/Wire Connector
NA	O	NA	Hitch Plate & Bracket 12000 LB (48" or 54")
O	O	O	Insulation 1/4" Fome-Cor Complete
S	S	S	Exterior (w/metal only)
S	NA	NA	Insulation R5 Fiberglass in Sidewalls, Roof & Floor
NA	O	NA	Jack for Hitch (2000#)
O	NA	NA	Jacks Stabilizer (set of 2)
O	NA	NA	Jacks Stabilizer (set of 4)
O	O	NA	Jack(s) for Hitch 12V Power
NA	NA	O	Mud Flaps (front & rear)
NA	NA	S	Shock Absorbers
O	O	NA	Shock Absorbers (4)
NA	O	NA	Shock Absorbers (6)
O	O	NA	Skid Bars for Rear Bottom Protection

Retail RUNNING GEAR & CONSTRUCTION Continued			
TT	FW	MI	Cost
NA	NA	S	Spare Tire Carrier
NA	NA	O	\$ 80 Spare Tire Cover Deluxe (Ford)
O	O	NA	\$146 Spare Tire & Carrier (15")
O	O	NA	\$233 Spare Tire & Carrier (16")
NA	NA	O	\$213 Spare Tire & Deluxe Cover (Chevy)
NA	NA	S	Spare Tire (Ford)
S	S	S	Structure Conventional
S	S	NA	Tires 7.75x15 ST W/W (8.55x15 — 36' & Certain SS Models)
NA	NA	S	Tires Polyester — Chevy
NA	O	NA	\$366 Tires Radial 16" ILO Std. set of 4, 36' & SS (Except 40')
NA	O	NA	\$732 Tires Radial 16" w/5200# Axle ILO Std. set of 6 (40' only)
O	O	NA	\$499 Tires Radial 16" w/5200# Axle ILO Std. set of 4 (29'-35')
NA	NA	S	Tires Radial — Ford
NA	NA	S	Wheel Covers Decorative Deluxe
S	S	NA	Wheels 15" Beige Spoke
SAFETY FEATURES			
S	S	NA	Break-Away Switch
O	O	O	\$665 Customer Pick Up
O	O	NA	\$0.70 Delivery Charges (per mile)
NA	NA	O	\$0.55 Delivery Charges (per mile)
S	S	S	Fire Extinguisher 5 BC
O	O	O	\$ 55 LP Leak Detector
S	NA	NA	Safety Chains
NA	NA	S	Seat Belts
S	S	S	Smoke Detector
O	O	O	State Seals

WINDOWS, DOORS, AWNINGS & VENTS			
TT	FW	MI	Cost
S	NA	NA	Awning Front
O	O	NA	\$100 Awning Rear (where applic.)
O	O	O	\$658 Awning Side A & E 8000 (up to 21')
O	O	O	\$632 Awning Side Carefree Spirit (up to 21')
O	O	O	\$632 Awning Side Carter (up to 21')
O	O	O	\$ 85 Awning Tension Rafter for Side Awning
O	O	O	\$ 31 Door Bell
S	S	S	Door Entrance w/Screen 26" w/Flush Latch
S	S	NA	Door Secondary 26" (where applic.)
S	S	S	Door Woven Folding (where applic.)
S	S	S	Grab Handle
O	O	O	\$ 33 Lock Dead Bolt (ea.)
S	S	S	Screens All Windows
O	O	O	\$ 36 Vent in Bath 12V ILO Std. w/Wall Switch
O	O	O	\$233 Vent in Ceiling 12V Fantastic 3-Spd. w/Wall Thermostat
O	O	O	\$ 33 Vent in Ceiling 12V ILO Std.
S	S	S	Vent in Ceiling Non-Power w/Smoked Dome (2 - 4)
NA	NA	S	Window 12" x 60" Front Cab Over
S	S	S	Window Square Picture 30" x 42" at Dinette
S	S	NA	Window Square Picture 48" x 24" (ea.) (where applic.)
S	S	NA	Window Square Picture 48" x 36" (ea.) (where applic.)
S	S	NA	Window Square Picture 48" x 48" (ea.) (where applic.)
S	S	NA	Windows Square Torque Brown Reg. Glass
O	O	S	\$144 Windows Square Torque Brown Safety Glass ILO Reg.

Newmar Kountry Klub

"Don't forget to check out the Klub... the Newmar Kountry Klub that is. All you need to be eligible is to be the proud owner of any one of the fine Newmar products!"

LEGEND

FLOOR PLANS

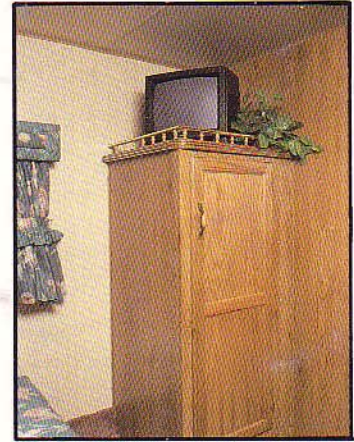
CBD — Center Bath/Dinette	W — Walk-Thru
FKD — Front Kitchen/Dinette	DD — Double Dinette
RB — Rear Bath	SBD — Side Bath/Dinette
RBD — Rear Bath/Dinette	CB — Center Bath
SB — Side Bath	CBTC — Center Bath/Twin/Chest
WCB — Walk-Thru Center Bath	CBTW — Center Bath/Twin/Wardrobe
WCBD — Walk-Thru Center Bath/Dinette	
WDKD — Walk-Thru Door Side Kitchen/Dinette	
WD — Walk-Thru Bath/Dinette	
WRKD — Walk-Thru Rear Kitchen/Dinette	
CBB — Center Bath Bunk	
FSB — Front Side Bath	

SPECIFICATIONS

CA — Class A
Dbl. — Double
ExCal — Except California
FW — Fifth Wheel
ILO — In Lieu Of
Lam. — Laminated
MI — Mini Home
NA — Not Available
O — Option
S — Standard
TT — Travel Trailer
V — Volt
W/W — White Wall

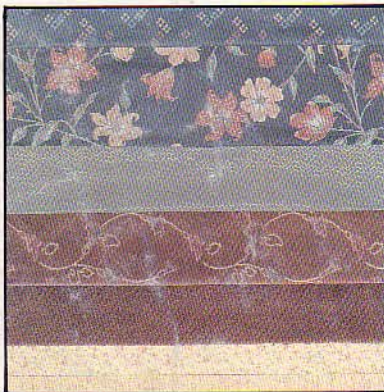


XL Optional Interior Package

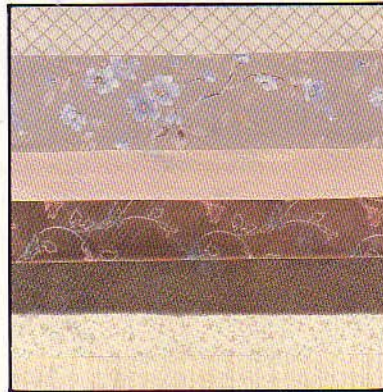


New TV Shelf
Over Wardrobe

AS-8-43 Rose Pearl



AS-8-44 Toasted Almond



AS-8-45 Prairie Sunset



Your nearest American Star dealer:

Newmar Corporation, P.O. Box 30
Nappanee, IN 46550-0030, (219) 773-7791
Scheduled plant tours Monday-Friday

Prices and specs are subject to change without written notice
at Newmar's discretion with no obligation.