



*Distinctively Different . . .*



*1990  
Towables*



*Newmar Corporation:  
A sound company backed by  
22 years of experience.*

**TECHNOLOGY SURROUNDED BY TRADITION**

BY







Travel Trailer Living Area — XL Package (optional) KS-O-70 Mocha Bisque

## Distinctively Different because . . .

. . . Kountry Star pays close attention to details that will insure you are getting a quality product. These tastefully designed interiors show the care taken in selecting the best of materials, fabrics and hardware for your satisfaction. This distinction in selective design and materials is not exclusive to the interiors only, but to every integrated part that goes into building a Kountry Star recreational vehicle.

. . . from inside to outside, Kountry Star is created by professional designers and engineers who not only know RVs, but understand color, interior space,

practical design, structural strength and the needs and wants of today's avid RVer.

. . . Kountry Star is backed by a company that has been successful in the RV market for 22 years, supplying folks all over America with the type of vehicle they want to spend their leisure and occupational time traveling in. Kountry Star offers all these benefits and extras to you at astoundingly affordable prices compared with the competition to insure you of years of camping enjoyment and reliability that won't set you back, but set you up for the vacations you've waited for!



Quality is #1 at Newmar Corporation, and our "Personal Touch" inspection of all products will insure you of that high quality before any RV ever leaves our plant!





Travel Trailer Galley — XL Package (optional) KS-O-70 Mocha Bisque

Travel Trailer Bath — XL Package (optional)

Travel Trailer Bedroom — XL Package (optional)



KS-O-70 Mocha Bisque



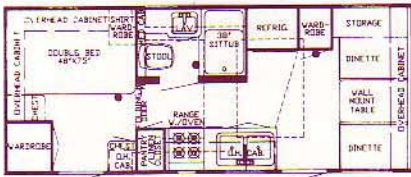
KS-O-70 Mocha Bisque



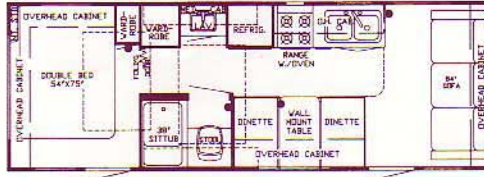
# TRAVEL TRAILERS

## Specifications & Floor Plans

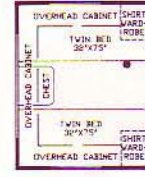
23 CBD



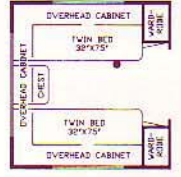
26 CBD



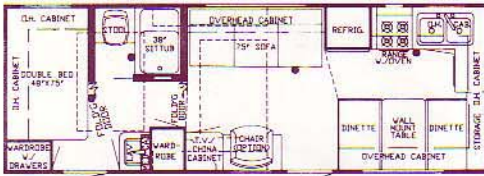
Option A



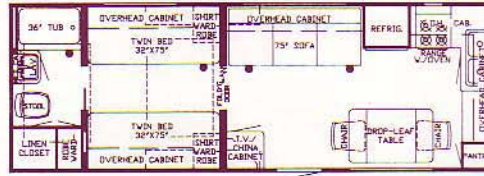
Option B



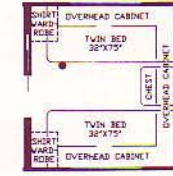
26 FKD



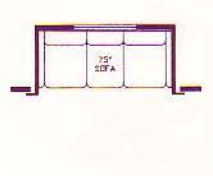
26 RBT



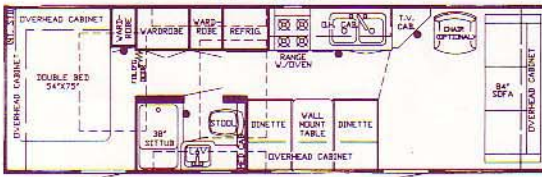
Option C



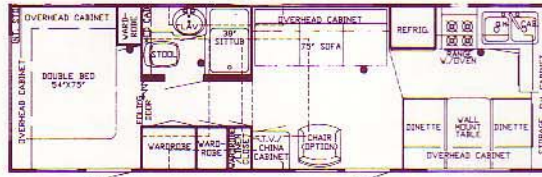
Option D



29 CBD



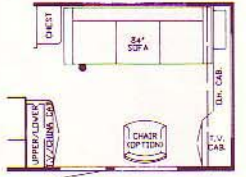
29 FKD



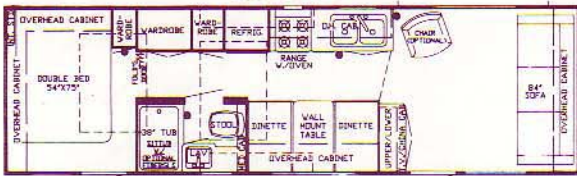
Option E



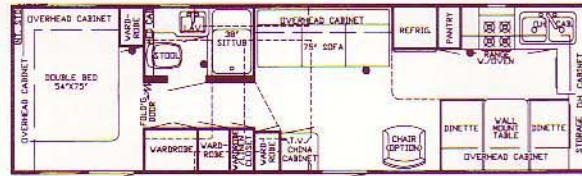
Option F



31 CBD



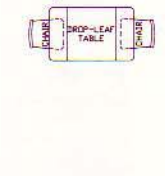
31 FKD



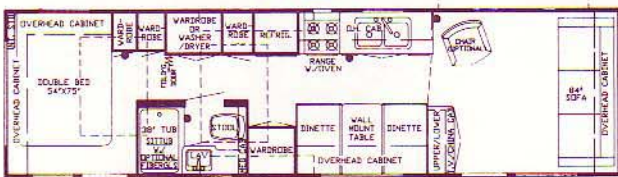
Option G



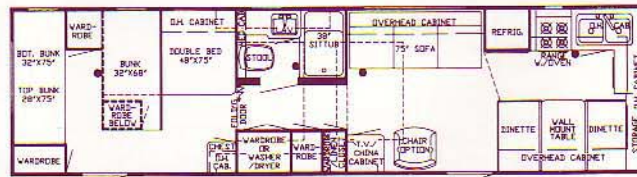
Option H



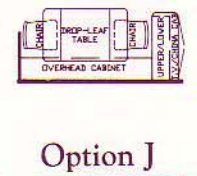
33 CBD



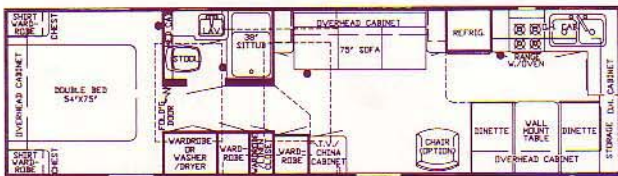
33 FKB



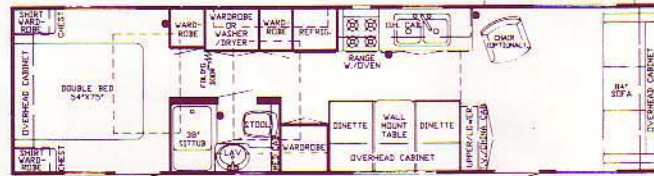
Option I



33 FKD



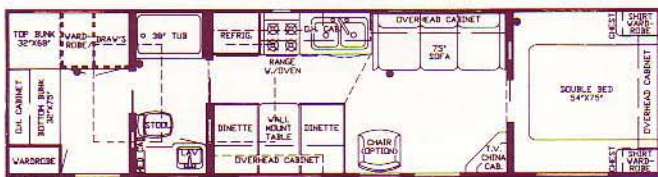
35 CBD



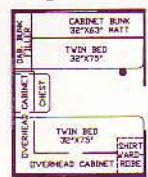
Option J



35 DB



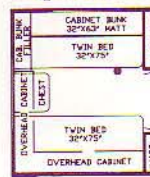
Option K



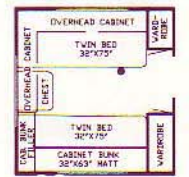
Option L



Option M



Option N

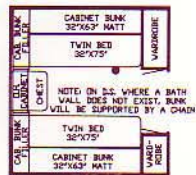




Option O



Option P



Option Q



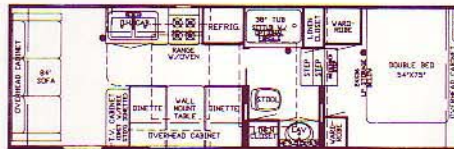
## Travel Trailer Specifications

Model	Gross Dry Weight	GVWR	Dry Hitch Weight	Dry Axle Weight	Tires	Wheels	Height w/AC	Length	Width	Options
23 CBD	4,550	7,000	575	3,975	F78 x 15C	15 x 5	10' 4"	23' 5-1/2"	7' 11-1/2"	A, K, O
26 CBD	5,050	7,200	600	4,450	F78 x 15C	15 x 5	10' 4"	26' 11-1/2"	7' 11-1/2"	A, H, L, O
26 FKD	5,125	7,300	625	4,500	F78 x 15C	15 x 5	10' 4"	26' 11-1/2"	7' 11-1/2"	H
26 RBT	5,125	7,300	625	4,500	F78 x 15C	15 x 5	10' 4"	26' 11-1/2"	7' 11-1/2"	J
29 CBD	5,575	7,800	675	4,875	F78 x 15C	15 x 5	10' 4"	29' 9-1/2"	7' 11-1/2"	A, H, L, O
29 FKD	5,650	7,900	725	4,925	F78 x 15C	15 x 5	10' 4"	29' 9-1/2"	7' 11-1/2"	A, H, K, O
31 CBD	5,775	7,800	725	5,050	F78 x 15C	15 x 5	10' 4"	31' 5-1/2"	7' 11-1/2"	A, D, E, F, G, I, L, O
31 FKD	5,825	7,800	775	5,050	F78 x 15C	15 x 5	10' 4"	31' 5-1/2"	7' 11-1/2"	A, H, K, O
33 CBD	5,975	7,900	800	5,175	F78 x 15C	15 x 5	10' 4"	33' 2-1/2"	7' 11-1/2"	A, D, E, F, G, I, L, O
33 FKB	6,025	7,900	800	5,225	F78 x 15C	15 x 5	10' 4"	33' 2-1/2"	7' 11-1/2"	H
33 FKD	6,025	7,900	800	5,225	F78 x 15C	15 x 5	10' 4"	33' 2-1/2"	7' 11-1/2"	B, H, M, P
35 CBD	6,600	9,200	900	5,700	H78 x 15C	15 x 6	10' 4"	35' 1/2"	7' 11-1/2"	B, D, E, F, G, I, N, Q
35 DB	6,600	9,200	900	5,700	H78 x 15C	15 x 6	10' 4"	35' 1/2"	7' 11-1/2"	C

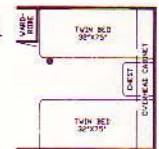
Approximate Weights. GVWR = Gross Vehicle Weight Rating. Charts are based on Standard Units.

FIFTH WHEEL  
Specifications & Floor Plans

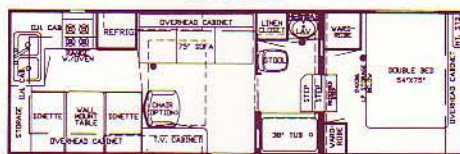
24 WD



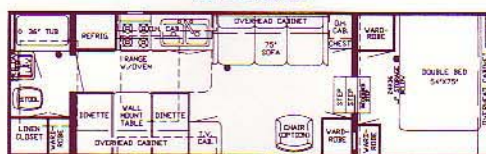
Option A



25 RK



27 RBD



27 SB



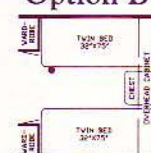
27 RK



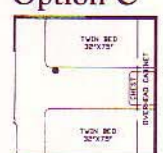
29 WD



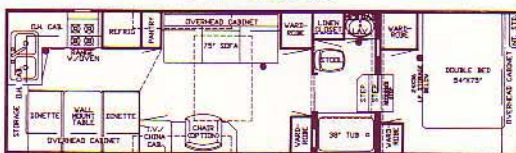
Option B



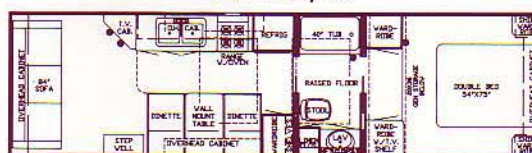
Option C



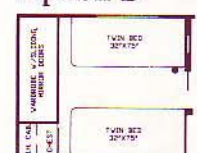
29 WRKD



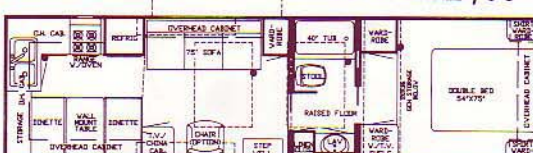
30 WD/SS



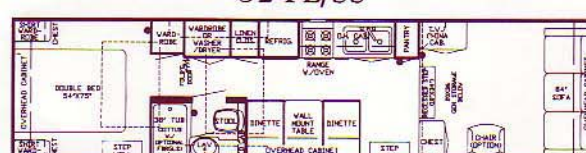
Option D



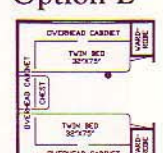
30 WRKD/SS



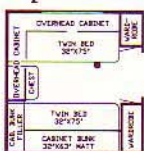
32 FL/SS



Option E



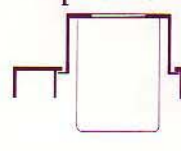
Option F1



Option F2



Option G



Option H



Option I



Option J







KS-O-68 Crimson Maple



KS-O-69 Shimmering Sapphire



KS-O-70 Mocha Bisque



Fifth Wheel Living Area / Galley





KS-O-69 Shimmering Sapphire





### Fifth Wheel Specifications

Model	Gross Dry Weight	GVWR	Dry Hitch Weight	Dry Axle Weight	Tires	Wheels	Height w/AC	Length	Width	Options
24 WD	5,200	7,600	950	4,250	F78 x 15C	15 x 5	10' 10"	25' 8-7/8"	7' 11-1/2"	B, L, O, V
25 RK	5,300	7,600	950	4,350	F78 x 15C	15 x 5	10' 10"	25' 8-7/8"	7' 11-1/2"	B, O, V
27 RBD	5,725	8,000	1,150	4,575	F78 x 15C	15 x 5	10' 10"	27' 6-7/8"	7' 11-1/2"	B, O, V
27 SB	5,700	8,000	1,200	4,500	F78 x 15C	15 x 5	10' 10"	27' 6-7/8"	7' 11-1/2"	B, O, V
27 RK	5,725	8,000	1,100	4,625	F78 x 15C	15 x 5	10' 10"	27' 6-7/8"	7' 11-1/2"	B, O, V
29 WD	5,900	8,500	1,200	4,700	F78 x 15C	15 x 5	10' 10"	28' 11-7/8"	7' 11-1/2"	B, L, O, V
29 WRKD	6,000	8,500	1,150	4,850	F78 x 15C	15 x 5	10' 10"	28' 11-7/8"	7' 11-1/2"	B, O, V
30 WD/SS	6,350	8,700	1,600	4,750	H78 x 15D	15 x 6	12' 2"	30' 3-7/8"	7' 11-1/2"	C, L, O, S
30 WRKD/SS	6,425	8,700	1,500	4,925	H78 x 15D	15 x 6	12' 2"	30' 3-7/8"	7' 11-1/2"	C, H, O, S
32 FL/SS	7,850	10,000	1,900	5,950	H78 x 15D	15 x 6	12' 8"	33' 7/8"	7' 11-1/2"	E, F1, F2, M
32 WD	7,200	8,500	1,550	5,650	H78 x 15C	15 x 5	12' 2"	33' 7/8"	7' 11-1/2"	C, H, L, N, O, P (S) *
32 WRKD	7,200	8,500	1,500	5,700	H78 x 15C	15 x 5	12' 2"	33' 7/8"	7' 11-1/2"	C, O (L, J, R, S) *
36 FL/SS	8,750	11,500	2,050	6,700	H78 x 15D	15 x 6	12' 8"	37' 6-7/8"	7' 11-1/2"	D, G, M, Q, T
36 WD	8,350	10,000	1,700	6,650	H78 x 15C	15 x 6	12' 2"	37' 6-7/8"	7' 11-1/2"	C, L, J, L, N, O, P, Q (S) *
36 WRKD	8,350	10,000	1,650	6,700	H78 x 15C	15 x 6	12' 2"	37' 6-7/8"	7' 11-1/2"	C, O, Q (K, R, S) *
40 WCBD	8,600	12,000	2,100	6,500	F78 x 15C	15 x 5	12' 2"	39' 10-7/8"	7' 11-1/2"	C, D, H, O, Q, T (G, S) *
40 WD	8,600	12,000	2,100	6,500	F78 x 15C	15 x 5	12' 2"	39' 10-7/8"	7' 11-1/2"	C, L, J, L, N, O, P, Q (S) *
40 WRKD	8,600	12,000	2,050	6,550	F78 x 15C	15 x 5	12' 2"	39' 10-7/8"	7' 11-1/2"	C, O (L, U, J) * (S)

Approximate Weights. GVWR = Gross Vehicle Weight Rating. Charts are based on Standard Units.

\*Options appearing in parentheses are available only with SS option.



# KOUNTRY STAR Towable Standards

## FW TT AIR CONDITIONING, HEATING & LP GAS

S	S	Air Cond. Prep (w/Wiring)
NA	S	Cover for 20 & 30# LP Gas Bottles ABS
S	S	Furnace 20M Electronic Ignition (21'-27') (Excalibur)
S	S	Furnace 25M Electronic Ignition (29'-35') (Excalibur)
S	NA	Furnace 31M Electronic Ignition (Excalibur) (36' & up)
S	S	LP Gas Bottles 2-20# Steel w/Auto. Reg.

## APPLIANCES & ACCESSORIES

S	S	Bath Acc. (3-towel bars, tis. hldr., 2-towel rings, 1-robe hook)
S	S	Faucet for Lavatory Dbl. Handle Mixing
S	S	Faucet for Shower Dbl. Handle Mixing w/Spigot
S	S	Faucet for Sink Dbl. Handle
S	S	Microwave Prep 22 1/4" W x 15" H
S	S	Range 4-Burner Porcelain w/Pilot Top & Oven (21' & up)
S	S	Range Hood w/Light & Fan
S	S	Refri. Norcold Single Door 452 2-Way (21' & up)
S	S	Sink Cover/Cutting Board
S	S	Sink Deep Dbl. Porcelain
S	S	Stool Aqua Magic Starlite
S	S	Tub or Shower w/Curtain
S	S	Tub Surround
S	S	Water Heater Gas 6 Gal.

## CABINETS & FURNITURE

S	S	Bed Double (See Floor Plan)
S	NA	Cabinet China w/Decorative Glass Door(s) (See Floor Plan)
S	S	Cabinet Medicine w/Mirror Doors
S	S	Cabinet Night Stand(s) (See Floor Plan)
S	S	Cabinetry Oak w/Hard Wood Frame Doors
S	S	Dinette w/Inner Springs & Fabric Covered Ends (See Floor Plan)
S	S	Door(s) under Dinette for Easy Access
S	S	Drawers Wood Double Roller Guides
S	S	Headboards Decorative (where applic.)
S	S	Sofa Bed Built-In (where applic.)
S	S	Sofa Bed Free Standing (where applic.)
S	S	Spice Rack (Hand Crafted)

## ELECTRICAL & LIGHTING EQUIPMENT

S	S	Battery 115 Amp Sears Die Hard Deep Cycle
S	S	Battery Rack w/Case & Wiring
S	S	Convertor 40 Amp w/Charger
S	S	Electrical Service 30 Amp
S	S	Light Exterior Patio w/Inside Switch
NA	S	Light for Hookup Convenience
S	S	Lights Running & Backup Recessed
S	S	Monitor Panel
S	S	Recept. 110V GFI (interior & exterior)
S	S	Stereo Antenna & 4 Speakers
S	S	TV Antenna Prep (Wire & 1 Jack only)
S	S	TV Cable Hook Up

## EXTERIOR ACCESSORIES

S	S	Bumper Cover Aluminum
S	S	Bumper w/Sewer Hose Storage
S	S	Exterior Front & Rear Wrap Around Smooth Metal

## FW TT EXTERIOR ACCESSORIES - Cont'd.

S	S	Roof One Piece Aluminum
S	NA	Step Double Manual
NA	S	Step Single Manual
S	S	Storage Exterior Compartment(s)

## INTERIOR FEATURES

S	S	Cabinet Doors w/Decorative Etched Glass
S	S	Floor Covering, Carpet w/Pad Bedroom & Living Room
S	S	Floor Covering, Vinyl in Kitchen & Bath
S	S	Mirror(s) w/Decorative Wood Frame
S	NA	Stand Up Bedroom Area (30' & up)
S	S	Window Treatmt. Mini Blinds w/Drapes/Val. & Tie Backs Living/Din. Area
S	S	Window Treatmt. Roller Shade to March Wall (bath only)
S	S	Window Treatmt. Roller Shade w/Drapes/Val. & Tie Backs (bedrm)

## PLUMBING SYSTEMS

S	S	Hook-Up for City Water
S	S	Insulated Holding Tanks
S	S	Tank Gray Water 48 Gal. (Approx.)
S	S	Tank Sewage Holding 48 Gal. (Approx.)
S	S	Water Capacity 42 Gal. (Approx.)
S	S	Water System Demand w/12V Pump & 5/8" Polybutylene Lines

## RUNNING GEAR & CONSTRUCTION

NA	S	Axle 4" Drop
S	NA	Axle Straight
S	S	Floor Conventional Frame w/5/8" Plywood
S	S	Frame Size 5" Tube (23'-29')
S	S	Frame Size 6" Tube (30' & up)
S	S	Frame Size Double Tube (40' & w/PSO)
S	S	Insulation Laminated 5/8" Foam in Sidewalls & Ceiling
S	S	Insulation R5 Fiberglass in Sidewalls, Roof & Floor
NA	S	Jack for Hitch (2,000 lb.)
S	NA	Jacks Stabilizer (set of 2) (29' & up)
S	S	Shock Absorbers
S	S	Structure Aluminum Sidewalls & Roof

## SAFETY FEATURES

S	S	Break Away Switch
S	S	Fire Extinguisher 5 BC
NA	S	Safety Chains
S	S	Smoke Detector

## WINDOWS, DOORS, AWNINGS & VENTS

NA	S	Awning Front
S	S	Door Entrance w/Screen w/Flush Latch
S	S	Door Secondary (where applic.)
S	S	Door Woven Folding (where applic.)
S	S	Grab Handle
S	S	Lock Dead Bolt (ea.)
S	S	Vent in Bath Area w/Wall Switch 12V
S	S	Vent in Ceiling Non-Power (2 - 4)
S	S	Windows Radius Torque Reg. Glass



# KOUNTRY STAR Towable Options

## FW TT AIR CONDITIONING, HEATING & LP GAS

- O O Air Cond. Coleman 11.0 BTU (ea.)
- O O Air Cond. Coleman 13.5 BTU (ea.)
- O O Air Cond. Emerson 13.5 Ducted (1)
- O O Air Cond. Emerson 13.5 Ducted (extra)
- O O Air Cond. Prep for 2nd Air, Not Ducted
- O O Furnace 35M Electronic Ignition ILO Std. (Excalibur)
- O O Heat Strip for Air Cond.
- O O LP Gas Bottles 2-30# Steel ILO 20# Steel
- O O LP Gas Bottles 2-40# Steel ILO 20# Steel (where applic.)

## APPLIANCES & ACCESSORIES

- O O Microwave Oven Conv. 30" (Sharp) w/4 Burner Hot Plate ILO Std Range (21' & up)
- O O Microwave Oven 22" (Sharp Carousel)
- O O Range Larger 4-Burner Porcelain, Blk. Glass Door w/Pilot Top & Oven (21' & up)
- O O Range Cover Bi-Fold Deluxe
- O O Refri. Dometic Double door 2601 2-Way ILO 452 (21' & up)
- O O Refri. Norcold Double Door 682 ILO 452 (21' & up)
- O O Refri. Norcold Double Door 683 3-Way ILO 452 (21' & up) (where applic.)
- O O Refri. Norcold Double Door 662 ILO 452 (21' & up)
- O NA Tub 40" ILO 54" w/Remainder Wardrobe ILO Std. (where applic.)
- O O Tub/Shower Fiberglass ILO Std. (except 18' & 20')
- O O Tub/Shower Enclosure Door
- O NA Washer & Dryer Sears 2-piece (See Floor Plans)
- O NA Washer & Dryer Prep Plumbing, Recept. & Shelf (certain models)
- O O Water Heater Bypass Kit
- O O Water Heater Gas 6 Gal. w/Elect. Ign.
- O O Water Heater Gas/Elec. 10 Gal. ILO 6 Gal. Gas (29' & up) (where applic.)
- O O Water Heater Reignor 12V

## CABINETS & FURNITURE

- O O Bed Queen (60" x 75") (where applic.)
- O NA Bed Dbl. Island ILO Std. (40 W/CBD & 36FL)
- O NA Bed Dbl. Island ILO Std. (up to 29')
- O NA Bed Twin ILO Std. (40W/CBD & 36FL)
- O O Bed Twin (32" x 75") ILO Double
- O O Bunk Cabinet w/3" Foam Mat. 8x14 Window ILO 91" Sofa OH
- NA O Bunk Cabinet w/3" Foam Mat., 8x14 Window Above Twin Bed (ea.) (where applic.)
- NA O Bunk House ILO Std. (26RBT)
- O NA Bunk w/Mini Dinette ILO Std. Rear Bedroom (40W/CBD, 36FL)
- O NA Cabinet Mini Hutch w/Lights (where applic. w/slide out)
- O O Chair Free Stding. Pedestal (where applic.)
- O O Chair Swivel Rocker (free standing)
- O NA Chairs Free Stding. Incliner w/End Table & Light in 91" Sl. Out ILO Sofa
- O O Counter Top Extension (where applic.)
- O NA Deluxe Honeymoon Suite Bedroom w/robe & Chest (Must Add SS Option) (30' & up)
- O O Dinette Free Standing w/2 Chairs ILO Built-in
- O O Doors Oak Cabinet over Decorative Shelves
- O O Drawer Below Dinette Seat (ea.)
- O O Entertainment Center Base Only (where applic.)
- O O Lifts for Convenient Storage Under Fixed Beds (ea.)
- O O Sofa 75" w/End Table ILO 84" Sofa (where applic.)
- O O Table Dropleaf high-low for (coffee or din.)
- O NA Wardrobe/Delete & Add Front Entrance Door 26" (where applic.)

## ELECTRICAL & LIGHTING EQUIPMENT

- O O Electrical Service 50 Amp ILO 30
- O NA Fan Ceiling (where applic.)
- O NA Gen. 6.5kw Onan w/1 Remote Switch & Gas Tank (30' & up)
- O NA Gen. 6.5kw Honda 110V w/1 Remote Switch, Gas Tank (30' & up)
- O NA Gen. 7.0kw Kohler w/1 Remote Switch, Gas Tank (30' & up)
- O NA Gen. Prep (110 V/wire, remote start wire & door)
- O O Lighting Fluorescent Dbl. Surface Mount (ea.) (Choose Location)
- O O Light Exterior Security (ea.) (Choose Location)
- O O Radio/Ant., AM/FM Stereo Cass., Clock & 4 Spkr. (CB Models 6 Spkr.)
- O O Telephone Jack Extra Interior (Choose Location)
- O O Telephone Hook up w/1 Jack (Choose Location)
- O O TV Antenna w/Power Booster & 1 Jack
- O O TV Jack Exterior on Door Side
- O O TV Jack Interior Extra (by recept) (Choose Location)
- O O TV Shelf, Jack & Recept. (Choose Location)
- O O VCR Prep (where applic.)
- O NA TV Satellite Dish 6' A&E (where applic.)

## EXTERIOR ACCESSORIES

- O NA Exterior Front & Rear Gelcoated Fiberglass End Caps ILO Metal (where applic.)
- O O Exterior Sides Gelcoated Fiberglass (per ft.)
- O O Ladder & Roof Rack
- O O Roof Rubber
- O O Slide Out 65" w/Lights (Choose Cbnt. & Furn. Selection) (where applic.)
- O O Slide Out 76" w/Lights (Choose Cbnt. & Furn. Selection) (where applic.)
- O NA Slide Out 91" w/Lights (Choose Cbnt. & Furn. Selection) (where applic.)
- O NA Slide Out 101" w/Lights (Choose Cbnt. & Furn. Selection) (where applic.)
- NA O Step Double Manual ILO Single

## FW TT EXTERIOR ACCESSORIES — Continued

- O NA Super Storage w/Enclosed Underbelly & Carpeting 32'
- O NA Super Storage w/Enclosed Underbelly & Carpeting 36' - 40'
- S NA SS 5200# Axles H78x15 D Tires (Except 40')
- S NA SS 75" Entrance Door
- S NA SS Carpeting in Storage Compartments
- S NA SS Enclosed Underbelly
- S NA SS Triple Step

## INTERIOR FEATURES

- O O Bedspread Quilted w/Matching Shams & Accent Pillow Dbl. (ea.)
- O O Bedspread Quilted w/Matching Shams & Accent Pillow Queen (ea.)
- O O Bedspread Quilted w/Matching Shams & Accent Pillow Twin (1 pr.)
- O O Countertop Ceramic Tile
- O O Floor Covering, Carpet w/Pad ILO Vinyl (Per Ft.)
- O O XL Package Interior & Exterior
- S S XL Bath Accessories Brass
- S S XL Bath Lav. & Tub Faucet Deluxe Brass
- S S XL Kitchen Faucet Single Handle
- S S XL Bedspread(s) Quilted w/Matching Shams (1 Dbl. or 1 Queen or 1 pr. Twins)
- S S XL Bi-Fold Range Cover
- S S XL Black Glass Door & Larger Oven
- S S XL Black Glass Door on Refer
- S S XL Stainless Steel Lug Nuts
- S S XL Deluxe Brass Complexion Light in Bathroom w/Wall Switch
- S S XL Deluxe Din. Light w/Wall Switch
- S S XL Deluxe Raised Panel Doors ILO Std.
- S S XL LP Gas Bottles Steel 30# ILO 20#
- S S XL Sofa Throw Pillows
- S S XL Lifts for Convenient Storage Under Fixed Beds
- S S XL Radio/Ant., AM/FM Stereo, Cass., Clock & 4 Spkr. (CBD Models 6 Spkr.)

## RUNNING GEAR & CONSTRUCTION

- O NA 12,000 lb. Hitch Plate & Bracket Center Mount (up to 12,000 lb. GVWR)
- O NA 15,000 lb. Hitch Plate & Bracket Center Mount
- O O Insulation 1/4" Fome-Cor Complete Exterior (w/Metal only)
- O O Insulation 1/4" Fome-Cor Floor, Roof & Ends (w/fiberglass sides)
- O O Insulation Polar Pak (R7 Sidewalls & Floor, R10 Roof)
- O NA Jacks Stabilizer (set of 2) (up to 27')
- NA O Jacks Stabilizer (set of 4)
- O O Jack(s) for Hitch 12V Power
- O O Skid Bars for Rear Bottom Protection
- O O Spare Tire Cover Deluxe (21' & up)
- O O Spare Tire & Carrier (15")
- O O Spare Tire & Carrier (16")
- O NA Tires Radial 16" ILO Std. set of 4, 36" & SS (Except 40')
- O NA Tires Radial 16" w/5,200 lb. Axle ILO Std. set of 6 (40' only)
- O O Tires Radial 16" w/5,200 lb. Axle ILO Std. set of 4 (30'-36')
- O O Underbelly Enclosed w/Fiberglass Insulation
- O O Underbelly Metal ILO Polymax

## SAFETY FEATURES

- O O Customer Pick Up
- O O LP Leak Detector
- O O State Seals

## WINDOWS, DOORS, AWNINGS & VENTS

- O O Awning Rear (where applic.)
- O O Awning Side A&E 8500 (up to 21')
- O O Awning Side A&E 9000 (up to 21')
- O O Awning Tension Rafter for Side Awning
- O O Door Bell
- O O Door 30" Entrance ILO 26" (where applic.)
- O O Skylight in Bathroom w/Soft Shade (21' & up)
- O O Vent in Ceiling 12V ILO Std. w/Wall Switch (Choose Location)
- O O Vent in Ceiling w/Wall Switch 12V (Choose Location)
- O O Vent/Ceiling 12V Fantastic 3-Spd. w/Wall Thermostat w/power opener (Choose Location)
- O O Window ILO Bevelled Mirrors in Bedroom (where applic.)
- O O Window Picture 48"x48" ILO 29x48 at Dinette
- O O Windows Radius Torque Safety Glass ILO Reg.
- O O Windows Safety Glass Storms (Except Slide Out)
- O O Windows Safety Glass Storms (for Slide Out only)



## LEGEND

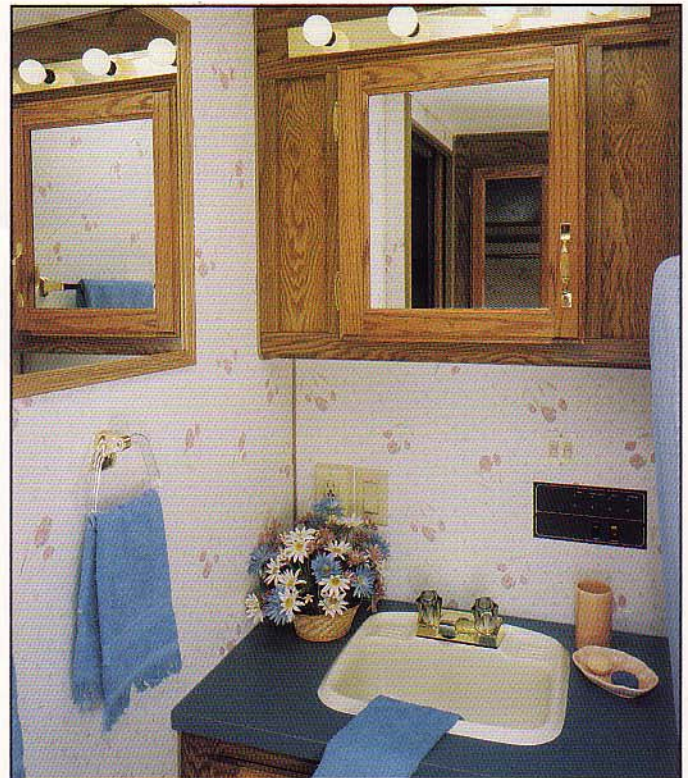
### FLOOR PLANS

CBD — Center Bath/Dinette  
 FKD — Front Kitchen/Dinette  
 RBD — Rear Bath/Dinette  
 RBT — Rear Bath/Twin Bed  
 SB — Side Bath  
 SS — Super Storage Model  
 WCBD — Walk-Thru Center Bath/Dinette  
 WD — Walk-Thru Bath/Dinette  
 WRKD — Walk-Thru Rear Kitchen/Dinette  
 DB — Double Bedroom  
 FKB — Front Kitchen Bunk  
 FL — Front Lounge  
 RK — Rear Kitchen  
 SBD — Side Bath/Dinette

### SPECIFICATIONS

Dbl. — Double  
 FW — Fifth Wheel  
 ILO — In Lieu Of  
 NA — Not Available  
 O — Option  
 S — Standard  
 TT — Travel Trailer  
 V — Volt  
 W/W — White Wall

\* Options appearing in parentheses are available only with SS option.



Fifth Wheel Bath KS-O-69 Shimmering Sapphire



Standard Mini Blinds



Super Storage Model — Fifth Wheel

**Newmar Kountry Klub**

"Don't forget to check out the Klub . . . the Newmar Kountry Klub that is. All you need to be eligible is to be the proud owner of any one of the fine Newmar products."



®A&E Systems Inc.



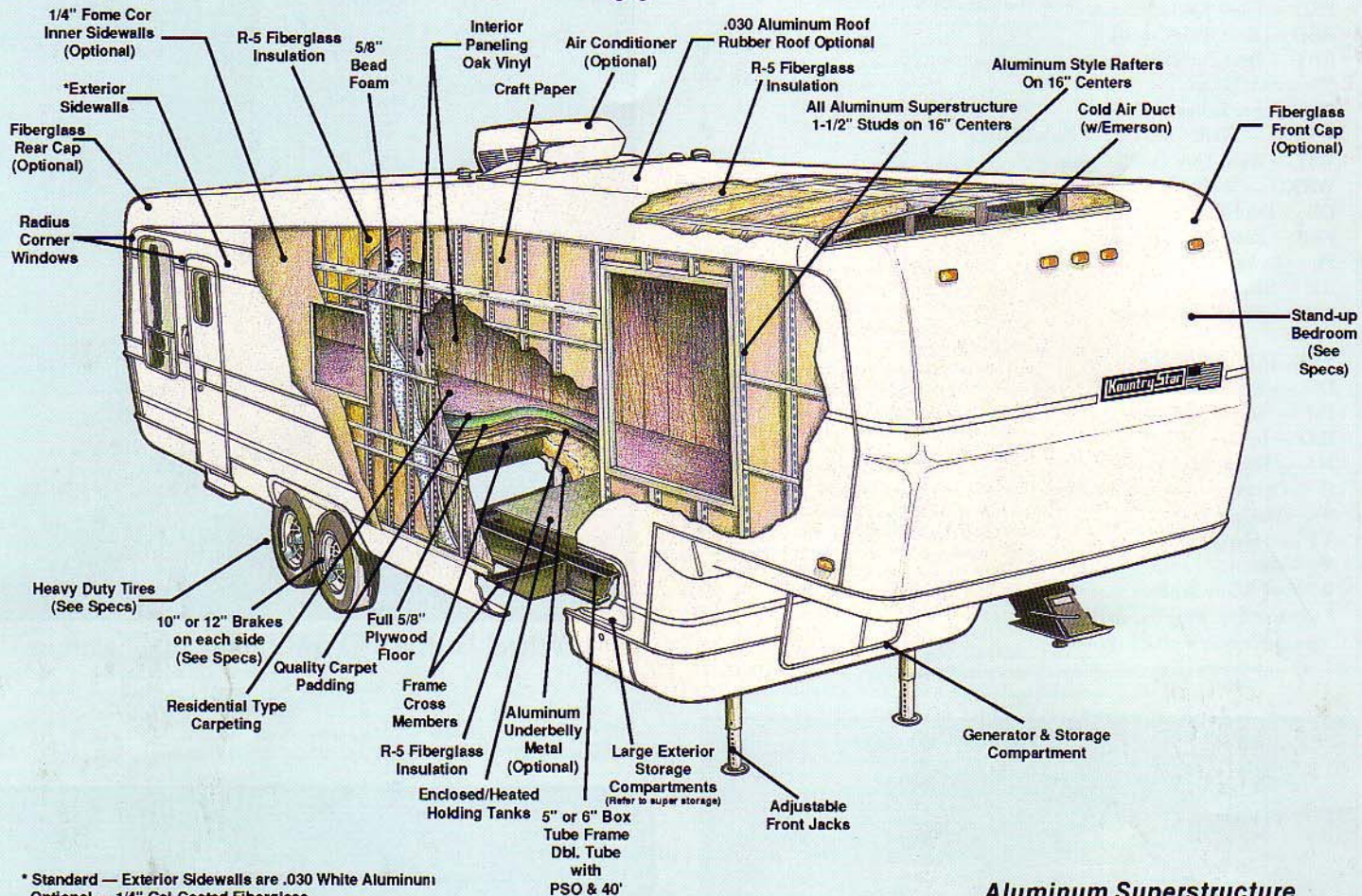
**SHARP.**



Newmar Corporation features appliances and components by these quality names to insure you of years of safe and trouble-free operation and enjoyment.

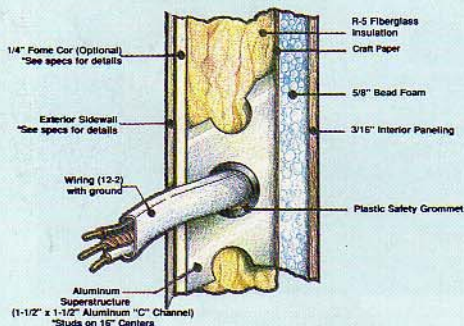


# The Distinctive Difference is Aluminum



## Aluminum Superstructure

### Sidewall Profile



### Composite "R" Factors

Sidewalls	8.9
Ceiling	9.7
Floor	9.1



Your nearest Kountry Star dealer:



Towables

Newmar Corporation, 355 North Delaware  
Nappanee, IN 46550-0030, (219) 773-7791

Scheduled plant tours Monday - Friday

Prices and specs are subject to change without written notice  
at Newmar's discretion with no obligation.