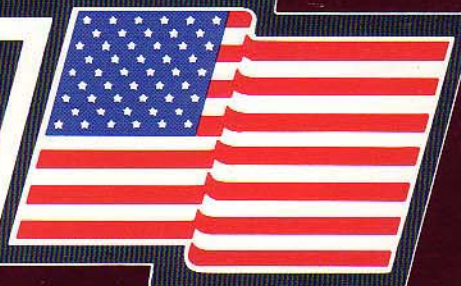


London Aire



The Ultimate Statement

51062



**Aluminum Superstructure*

1990
Towables



Newmar Corporation:
A sound company backed by
22 years of experience.



TECHNOLOGY SURROUNDED BY TRADITION

BY





Fifth Wheel Bedroom (Honeymoon Suite)

LA-O-62 Seaspray Blush

"The Ultimate Statement"

Have you ever wanted to make a statement, a reflection of your character and taste for finer things, but just couldn't seem to find the appropriate words? Why not let London Aire make that statement for you this year . . . **The Ultimate Statement!**

London Aire has been impressing RVers for years with only the finest quality of genuine hardwoods, etched glass, discreetly designed plush interiors and exteriors and the craftsmanship you've come to expect from Newmar Corporation's finest line of recreational vehicles.

The Ultimate Statement therefore is expected to include all the luxuries and intimate detailing possible in a single coach. With one look at London Aire's list of standard features, you'll be pleasantly convinced that we have made these expectations into a reality.

Short-cuts are prohibited in the manufacturing of any product in this line up. Long hours are spent in the selection of colors, fabrics, hardwoods and hardware. Any components chosen for a London Aire product must meet with rigid inspection for quality, eye-appeal and durability before they are allowed to become a part of **The Ultimate Statement.**

These strict procedures along with the best components and materials are all combined with an all-aluminum superstructure to insure the London Aire owner that he will enjoy years of beauty and dependable performance in one of the most unique RVs on the road today.

Making **The Ultimate Statement** has one slight drawback however, and we feel obligated to warn you of this minor problem: Wherever you take your RV, people everywhere are going to want a first hand glimpse of something they've dreamed of . . . **London Aire!**



Quality is #1 at Newmar Corporation, and our "Personal Touch" inspection of all products will insure you of that high quality before any RV ever leaves our plant.

*Lifetime Limited Warranty on Superstructure

Newmar Corporation warrants the Superstructure which includes the following: The 12" I-beam Frame; the Aluminum Framing in the Sidewalls and Roof. If any part of the Superstructure fails to perform properly because of faulty workmanship or materials supplied by Newmar, during the ownership of the original buyer, it will be repaired without charge for either parts or labor by Newmar providing the proper claim procedures are followed. All other items excluding the Superstructure are covered under the standard Newmar 1 Year Limited Warranty. See Owner's Manual for details.



New Stadnard Corian Countertop



Standard Recliner



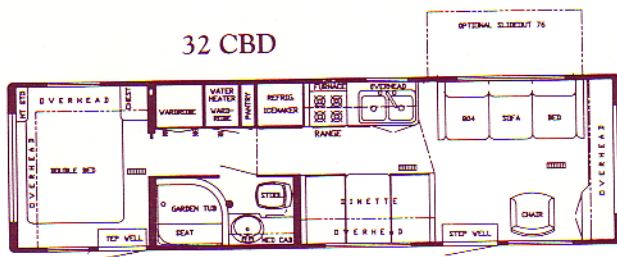
Fifth Wheel Bath LA-O-62 Seaspray Blush



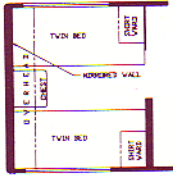
Fifth Wheel Galley / Dining Area

LA-O-62 Seaspray Blush

TRAVEL TRAILERS Specifications & Floor Plans



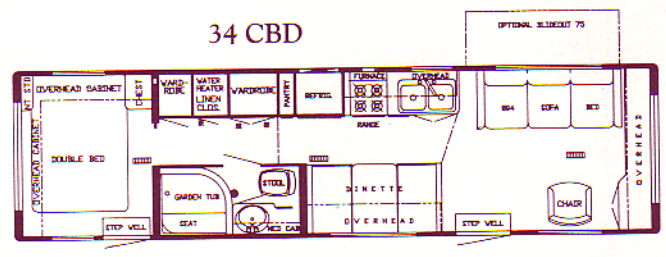
Option A



Option B



Option C



Travel Trailer Specifications

Model	Gross Dry Weight	GVWR	Dry Hitch Weight	Dry Axle Weight	Tires	Wheels	Height w/AC	Length	Width	Options
32 CBD	8,200	10,400	1,000	7,200	235/85 R16D	16 x 6	126"	32' 3"	93"	A, B, C
34 CBD	8,900	11,000	1,000	7,900	235/85 R16D	16 x 6	126"	33' 9"	93"	A, B, C

Approximate Weights. GVWR = Gross Vehicle Weight Rating. Charts are Based on Standard Units.

FIFTH WHEEL Specifications & Floor Plans

Option A



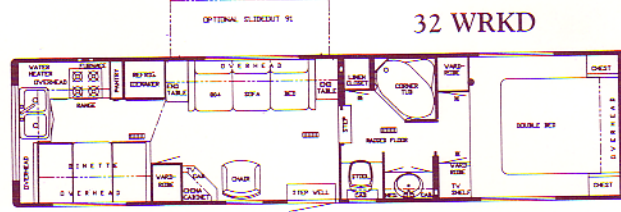
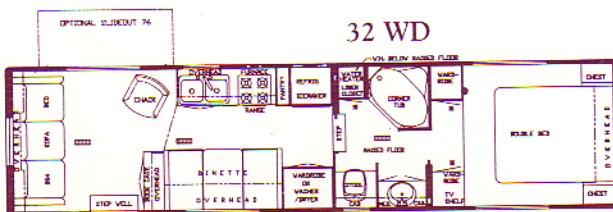
Option B



Option C



Option D



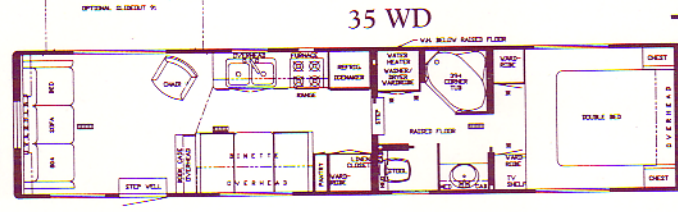
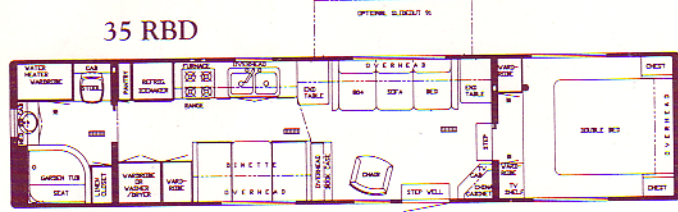
Option E



Option F



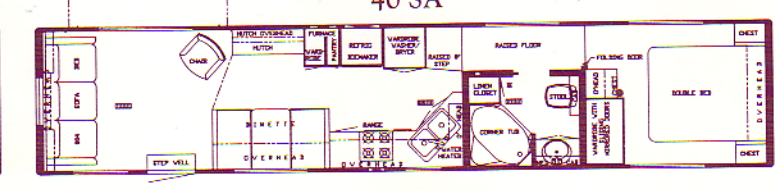
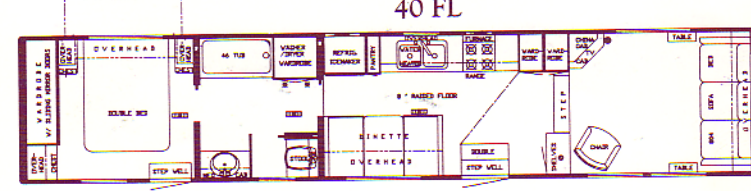
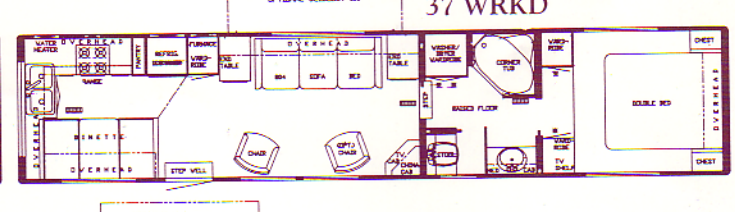
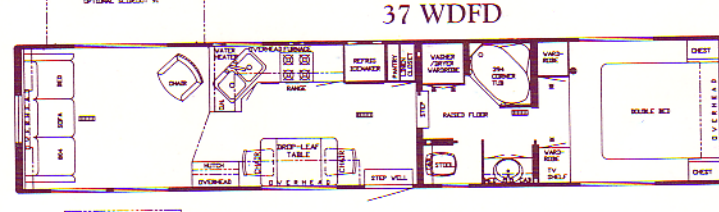
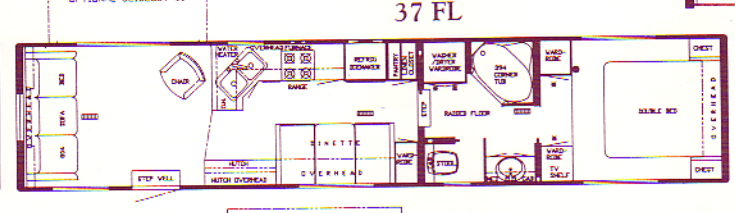
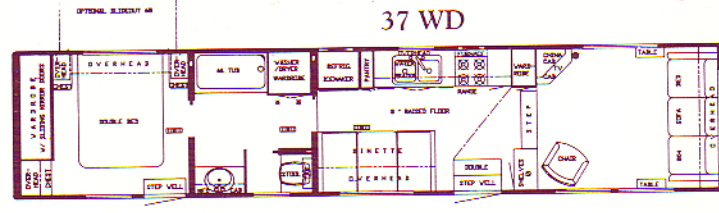
Option G

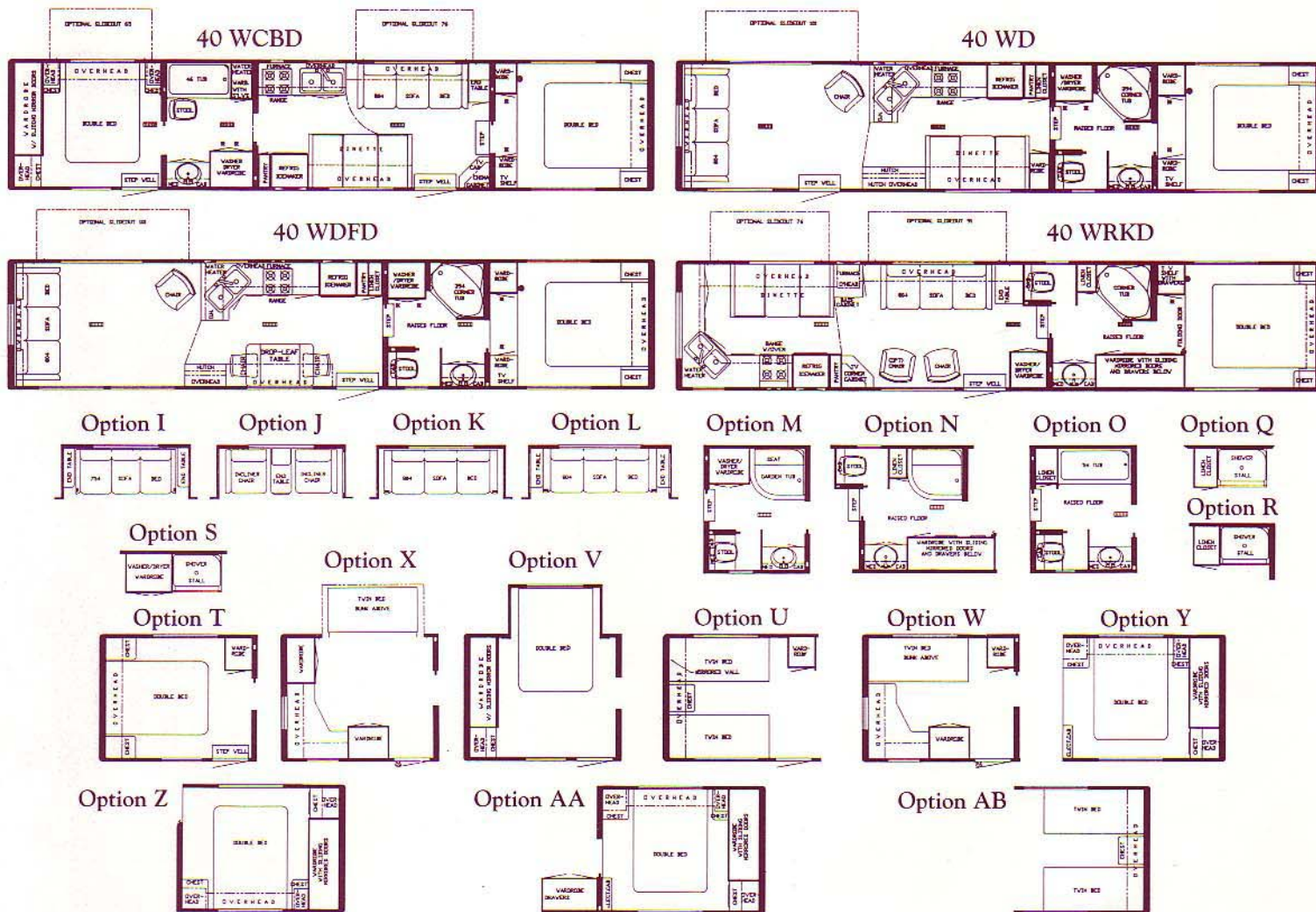


Option H



Option P





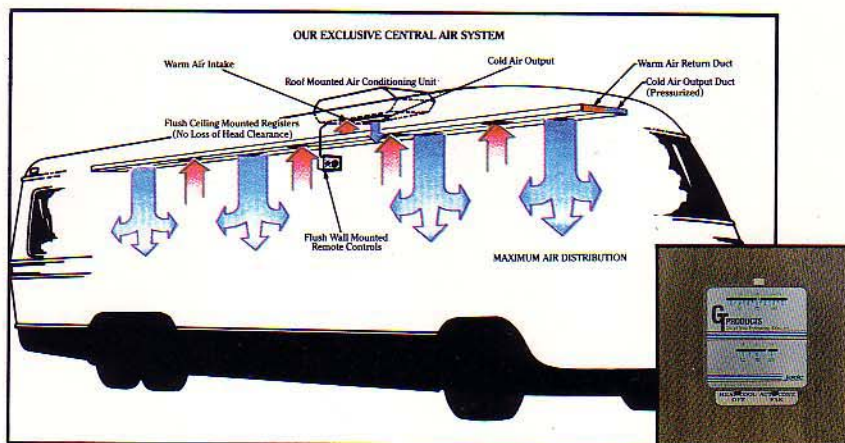
Fifth Wheel Specifications

Model	Gross Dry Weight	GVWR	Dry Hitch Weight	Dry Axle Weight	Tires	Wheels	Height w/AC	Length	Width	Options
32 WD	9,700	12,000	1,700	8,000	235/85 R16D	16 x 6	142-1/2"	33' 9"	93"	A, C, D, E, F, R, Y, AB
32 WRKD	9,800	12,000	1,650	8,150	235/85 R16D	16 x 6	142-1/2"	33' 9"	93"	A, B, I, J, K, R, Y, AB
35 RBD	9,950	13,000	1,650	8,300	235/85 R16E	16 x 6	142-1/2"	36' 8"	93"	A, B, I, J, K, Q, Y, AB
35 WD	10,150	13,000	1,800	8,350	235/85 R16E	16 x 6	142-1/2"	36' 8"	93"	A, C, D, E, I, J, K, M, O, S, Y, AB
37 FL	11,100	14,000	1,900	9,200	235/85 R16D	16 x 6	148-1/4"	38' 11"	93"	A, D, T, U, V, W, X
37 WD	11,300	14,000	1,950	9,350	235/85 R16D	16 x 6	142-1/2"	38' 11"	93"	A, D, E, I, J, K, M, O, S, Y, AB
37 WDFD	11,300	14,000	1,950	9,350	235/85 R16D	16 x 6	142-1/2"	38' 11"	93"	C, D, E, I, J, K, M, O, S, Y, AB
37 WRKD	11,250	14,000	1,900	9,350	235/85 R16D	16 x 6	142-1/2"	38' 11"	93"	A, B, L, M, O, S, Y, AB
40 FL	11,400	15,000	2,050	9,350	235/85 R16D	16 x 6	148-1/4"	40' 3"	93"	A, D, T, U, V, W, X
40 SA	11,900	15,000	2,100	9,800	235/85 R16D	16 x 6	142-1/2"	40' 3"	93"	A, D, E, I, J, K, Z, AB
40 WCBD	11,900	15,000	2,050	9,850	235/85 R16D	16 x 6	142-1/2"	40' 3"	93"	A, B, F, T, U, V, W, X, Y, AB
40 WD	11,650	15,000	2,100	9,550	235/85 R16D	16 x 6	142-1/2"	40' 3"	93"	A, D, E, L, M, O, S, Y, AB
40 WDFD	11,650	15,000	2,100	9,550	235/85 R16D	16 x 6	142-1/2"	40' 3"	93"	C, D, E, L, M, O, S, Y, AB
40 WRKD	11,600	15,000	2,050	9,550	235/85 R16D	16 x 6	142-1/2"	40' 3"	93"	A, B, G, H, I, J, K, N, Q, AA, AB

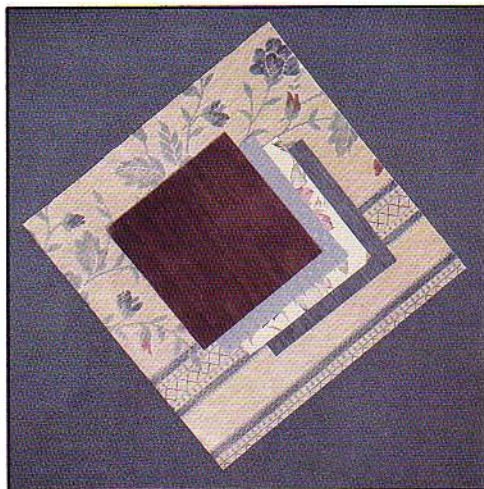
Approximate Weights. GVWR = Gross Vehicle Weight Rating. Charts are Based on Standard Units.



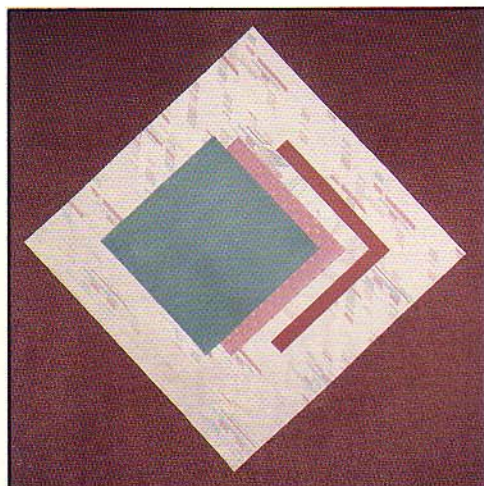
Standard Sliding Bumper Tray / Spare Tire Carrier



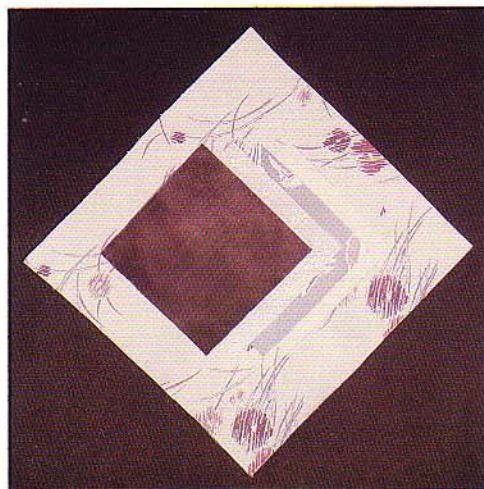
Remote Thermostatically Controlled "On/Off"



LA-O-61 Porcelain Blue



LA-O-62 Seaspray Blush



LA-O-63 Ruby Cream



Fifth Wheel Living Area with Slide Out



LA-O-62 Seaspray Blush

LONDON AIRE Towable Standards

FW TT AIR CONDITIONING, HEATING & LP GAS

S	S	Air Cond. Central Coleman 13.5 BTU w/Wall Thermostat (1)
S	S	Furnace 35M Electronic Ignition (Excalibur)
S	S	Hear Under Floor Ducted
NA	S	LP Gas Bottles 2-30# Steel w/Auto. Reg.
S	NA	LP Gas Bottles 2-40# Steel w/Auto. Reg.
S	S	LP See Level Gauges (set of 2)

APPLIANCES & ACCESSORIES

S	S	Bath Acc. (1-towel bar, tis. hldr., 1-towel ring, 1-robe hook)
S	S	Clothes Line in Tub/Shower (Retractable)
S	S	Faucet for Lavatory Deluxe Dbl. Handle w/Pop up Plug (Gold)
S	S	Faucet for Shower Single Handle w/Spigor (Gold)
S	S	Faucet for Sink Single Handle Deluxe Hi Rise (Chrome)
S	S	Food Center Nutone (Blender)
S	S	Hair Dryer
S	S	Magazine Rack in Bath Area (where applic.)
S	S	Microwave Oven Convection 30" (Sharp) w/Light, Fan & 4-Burner Hot Plate
S	S	Range Cover Bi-Fold Deluxe
S	S	Refri. Dometic 4801 AES w/Ice Maker w/Raised Panel Insert
S	S	Sink Covers/Corian (2)
S	S	Sink Deep Dbl. Porcelain
S	S	Stool Aqua Magic Galaxie w/Padded Lid
S	S	Tub or Shower Fiberglass
S	S	Tub or Shower Enclosure Door
S	S	Vacuum System Portable
S	S	Waste Basket
S	S	Water Heater Bypass Kit
S	S	Water Heater Gas/Elec. 10 Gal. w/Reignitor
S	S	Water Filtering System (Drink Dispenser & Ice Maker)

CABINETS & FURNITURE

S	S	Bed Double (See Floor Plan)
S	NA	Cabinet China w/Decorative Glass Door(s) (See Floor Plan)
S	S	Cabinet Medicine w/Mirror Doors
S	S	Cabinet Night Stand(s) (See Floor Plan)
S	S	Cabinetry Walnut Hardwood w/Raised Panel Doors
S	S	Chair Recliner w/Foot Rest
S	S	Dinette w/Inner Springs & Fabric Covered Ends (See Floor Plan)
S	S	Doors or Drawers under Dinette for Easy Access
S	S	Drawer Wood w/Silverware Tray
S	S	Drawers Below Dinette Seat (ea.)
S	S	Drawers Wood w/Metal Guides & Side Rollers
S	S	Headboards Decorative (where applic.)
S	S	Lifts for Convenient Storage Under Fixed Beds (ea.)
S	S	Pantry Slide-out (See Floor Plan)
S	S	Sofa Bed Free Standing (where applic.)
S	S	Spice Rack (Hand Crafted)
S	S	Table Dropleaf high-low for (coffee or din.)

ELECTRICAL & LIGHTING EQUIPMENT

S	S	Battery 115 Amp Sears Die Hard Deep Cycle
S	S	Battery Box on Slides
S	S	Convertor 50 Amp w/Charger
S	S	Light at Gate Valve Area
S	S	Light Exterior Patio w/Inside Switch
S	S	Light Fixture Deluxe Over Dinette & Fixed Bed
S	S	Light for Hookup Convenience
S	S	Lighting 12-Volt Fluorescent (w/Wall Switch)
S	S	Lights Tube Behind Glass Doors
S	S	Lights in Wardrobe w/Automatic Switches
S	S	Lights Running & Backup Recessed
S	S	Monitor Panel Super Deluxe w/Clock & Weather Center
S	S	Plug & Bracket for Tow Vehicle
S	S	Radio/Ant., AM/FM Stereo Cass., Clock & 4 Spkr. (CBD Models 6 Spkr.)
S	S	Recept. 110V GFI (interior & exterior)
S	S	Switch Shut-off for Bedroom Speakers
S	S	Telephone Hook up w/1 Jack (Choose Location)
S	S	TV Antenna w/Power Booster & 2 Jacks
S	S	TV Color AC 19" w/Remote Control
S	S	TV Jack Exterior on Door Side
S	S	TV Cable Hook Up
S	S	TV Shelf/Cabinet (bedroom)
S	S	VCR w/Newmar Tape

EXTERIOR ACCESSORIES

S	S	Bumper Rear Auto Style w/Storage Comp
S	S	Exterior Front & Rear Gelcoated Fiberglass End Caps
S	S	Exterior Sides Gelcoated Fiberglass
S	S	LP Gas Bottles in Concealed Compartment
S	NA	Raised Floor Bath w/Large Carpeted Storage Area & Lights
S	S	Roof Gelcoated Fiberglass

FW TT EXTERIOR ACCESSORIES - Cont'd.

NA	S	Step Double Manual
S	NA	Step Triple Manual
S	S	Stone Guard Pull Down Vinyl (Exclusive)
S	S	Storage Exterior Compartment(s)
S	S	Storage Exterior Slide Out Drawer 29"
S	S	Storage Exterior Slide Out Drawer 48"
S	NA	SS Carpeting in Storage Compartments

INTERIOR FEATURES

S	S	Bedsread Quilted w/Matching Shams & Accent Pillow Dbl. (ea.)
S	S	Cabinet Doors w/Decorative Glass
S	S	Ceiling Woven Soft Touch
S	S	Countertop Corian Kitchen, Dinette & Bath
S	S	Door Frame Cushioned
S	S	Floor Covering, Carpet w/9/16" Deluxe Pad Throughout
S	S	Mirror(s) Bevelled & Etched w/Decorative Wood Frame
S	NA	Stand Up Area in Front Bedroom
S	S	Window Garnish Hard Wood (Residential Style)
S	S	Window Treatmt. Mini Blinds (kitchen & bath)
S	S	Window Treatmt. Day/Night Soft Shades, CncBd/Lined Drapes
		Tvs Rod/Tie Bks.

PLUMBING SYSTEMS

S	S	Hook-Up for City Water
S	S	Insulated Holding Tanks
S	S	Sewage Holding Tank Rinse
S	S	Sewage Hose Holder
S	S	Tank Gray Water 48 Gal. (Approx.)
S	S	Tank Sewage Holding 48 Gal. (Approx.)
S	S	Water Capacity 42 Gal. (Approx.)
S	S	Water System Demand w/12V Pump & 5/8" Polybutylene Lines

RUNNING GEAR & CONSTRUCTION

NA	S	Axle 4" Drop
S	NA	Axle Straight (Triple 37' & Up)
S	S	Floor 1" Laminated Plywood
S	S	Frame Size 12" I-Beam
S	NA	12,000 lb. Hitch Plate & Bracket Center Mount (up to 12,000 lb. GVWR)
S	NA	15,000 lb. Hitch Plate & Bracket Center Mount
S	S	Insulation 1/4" Fome-Cor Exterior Roof
S	S	Insulation R19 Fiberglass in Floor
S	S	Insulation R19 Fiberglass in Roof
S	S	Insulation Laminated 5/8" Foam in Sidewalls & Ceiling
S	S	Insulation R7 Fiberglass in Sidewalls
S	NA	Jacks Stabilizer (set of 2)
NA	S	Jacks Stabilizer (set of 4)
S	S	Jack(s) for Hitch 12V Power
S	S	Shock Absorbers
S	S	Skid Bars for Rear Bottom Protection
S	S	Spare Tire in Bumper Slide Out Tray
S	NA	Stabilizer for Fifth Wheel Pin (Excl. Built-in)
S	S	Structure Aluminum Sidewalls & Roof
S	S	Suspension w/Mor Ryde TA-1 w/Tandem Axle Models
S	S	Suspension w/Mor Ryde TA-1 w/Triple Axle Models
S	S	Underbelly Enclosed w/Lam. 5/8" Foam & Gate Valve Insp. Plate
S	S	Wheels 16" Polished Aluminum

SAFETY FEATURES

S	S	Break Away Switch
S	S	Fire Extinguisher 10 BC
S	S	LP Leak Detector
NA	S	Safety Chains
S	S	Smoke Detector

WINDOWS, DOORS, AWNINGS & VENTS

S	S	Awning Front &/or Rear Recessed w/12V Switch Inside & Outside (where applic.)
S	S	Awning Side A&E 9000 (up to 21')
S	S	Door Bell
S	S	Door Entrance Radius w/Screen w/Flush Latch & Dead Bolt Lock
NA	S	Door Secondary 26" Radius w/Dead Bolt Lock (where applic.)
S	S	Door Stop Auto Flush Recessed (one)
S	NA	Door Wood Folding (where applic.)
S	S	Grab Handle Deluxe w/Light & Inside Switch
S	S	Skylight in Bathroom w/Soft Shade
S	S	Vent in Bath Area w/Wall Switch 12V
S	S	Windows Radius Torque Tinted Safety Glass

LONDON AIRE Towable Options

FW TT AIR CONDITIONING, HEATING & LP GAS

- ☐ ☐ Air Cond. Central Coleman 13.5 BTU w/Wiring & Wall Thermostat (Extra)
- ☐ NA Furnace 20M Electronic Ignition in Bedroom (Excalibur)
- ☐ NA Furnace 40M Electronic Ignition ILO Std. (Excalibur)
- ☐ ☐ LP Gas Bottles 2-30# Alum. w/Gauges ILO 30# Steel
- ☐ NA LP Gas Bottles 2-40# Alum. w/Gauges ILO 40# Steel

APPLIANCES & ACCESSORIES

- ☐ ☐ Ironing Board (where applic.)
- ☐ ☐ Safe (where applic.)
- ☐ NA Shower Stall 36" ILO Corner Tub
- ☐ NA Tub 54" w/16" Linen Cab (ILO 27" washer/dryer WRB)
- ☐ NA Tub Garden-style ILO Corner Tub
- ☐ ☐ Washer & Dryer Sears 2-piece (See Floor Plans)
- ☐ ☐ Washer & Dryer Prep Plumbing, Recept. & Shelf (certain models)
- ☐ ☐ Water Heater Gas/Elec. 6-Gal. Fast Recovery w/Elect. Ign.

CABINETS & FURNITURE

- ☐ ☐ Air Mattress for Queen or Twin Beds
- ☐ ☐ Bed Queen (60" x 75") w/Spread & Sham (where applic.)
- ☐ NA Bed Dbl. Island ILO Std. (WCBD & FL Models)
- ☐ NA Bed Twin ILO Std. (WCBD & FL Models)
- ☐ ☐ Bed Twin (32" x 75") ILO Dbl. w/Spreads & Shams
- ☐ NA Bunk w/Desktop ILO Std. Rear Bedroom (WCBD-FL)
- ☐ NA Cabinet Mini Hutch w/Lights (where applic. w/slide out)
- ☐ ☐ Cabinetry Oak w/Raised Panel Doors ILO Walnut
- ☐ NA Chairs Free Stding. Incliner w/End Table & Light in 91" Sl. Out ILO Sofa
- ☐ NA Deluxe Honeymoon Suite Bedroom W/robe & Chest
- ☐ NA Dinette Free Standing w/2 Chairs ILO Built-in
- ☐ NA Entertainment Center (where applic.)
- ☐ ☐ Sofa 75" w/End Table ILO 84" Sofa
- ☐ NA Wardrobe/Delere & Add Front Entrance Door 26" (where applic.)

ELECTRICAL & LIGHTING EQUIPMENT

- ☐ ☐ Battery 115 Amp Sears Die Hard Deep Cycle Extra
- ☐ ☐ Electrical Service 50 Amp ILO 30
- ☐ NA Fan Ceiling (where applic.)
- ☐ NA Gen. 6.5kw Onan w/1 Remote Switch, Gas Tank, Auto. Change-over & Battery
- ☐ NA Gen. 6.5kw Honda 110V w/1 Remote Switch, Gas Tank, Auto. C/O & Battery
- ☐ NA Gen. 7.0kw Kohler w/1 Remote Switch, Gas Tank, Auto. Changeover & Battery
- ☐ NA Gen. Gasoline Tank
- ☐ NA Gen. Prep (Auto Changeover, 12V Cable, Remote Start Wire & Door)
- ☐ NA Intercom System
- ☐ NA Ceiling Light Prep, 110V w/Wall Switch
- ☐ ☐ Light Exterior Security (ea.) (Choose Location)
- ☐ ☐ Stereo Deluxe AM/FM, Cass., Clock & Compact Disc ILO Std.
- ☐ ☐ Recept. GFI Protected 110V Exterior (extra)

- ☐ ☐ Recept. 110V Interior (extra) (Choose Location)

FW TT ELECTRICAL & LIGHTING EQUIPMENT - Cont'd.

- ☐ ☐ Telephone Jack Extra Interior (Choose Location)
- ☐ ☐ TV Jack w/Splitter (extra) (Choose Location)
- ☐ ☐ TV Satellite Dish 6' A&E (where applic.)

EXTERIOR ACCESSORIES

- ☐ ☐ Ladder & Roof Rack
- ☐ ☐ Slide Out 65" w/Lights (Choose Cbnt. & Furn. Selection) (where applic.)
- ☐ ☐ Slide Out 76" w/Lights (Choose Cbnt. & Furn. Selection) (where applic.)
- ☐ NA Slide Out 91" w/Lights (Choose Cbnt. & Furn. Selection) (where applic.)
- ☐ NA Slide Out 101" w/Lights (Choose Cbnt. & Furn. Selection) (where applic.)
- ☐ ☐ Storage Roof Pod 10 cu. ft.
- ☐ ☐ Storage Roof Pod 21 cu. ft.

INTERIOR FEATURES

- ☐ ☐ Floor Covering, Hard Wood Parquet in Kitchen Area ILO Carpet
- ☐ ☐ Floor Covering, Vinyl in Kitchen Area ILO of Carpet
- ☐ ☐ Floor Covering, Ceramic Tile in Bath Area ILO Carpet

PLUMBING SYSTEMS

- ☐ ☐ Heat Pads for Holding Tanks 110V

RUNNING GEAR & CONSTRUCTION

- ☐ NA Jacks Stabilizer Extra (set of 2)
- ☐ ☐ Jacks Stabilizers 12V Power Twins A&E (ser of 2) ILO Std. (without Remote)

SAFETY FEATURES

- ☐ ☐ Customer Pick Up
- ☐ ☐ Security System A&E
- ☐ ☐ State Seals

WINDOWS, DOORS, AWNINGS & VENTS

- ☐ ☐ Awning Per Window Matching Side Awning (A&E 9000) (Choose Location)
- ☐ ☐ Awning Tension Rafter for Side Awning
- ☐ ☐ Vent in Ceiling w/Wall Switch 12V (Choose Location)
- ☐ ☐ Vent/Ceiling 12V Fantastic 3-Spd. w/Wall Thermostat w/power opener (Choose Location)
- ☐ ☐ Window ILO Bevelled Mirrors in Bedroom (where applic.)
- ☐ ☐ Window Picture 48"x48" ILO 29x48 at Dinette (w/free standing dinette only)
- ☐ NA Window Picture 48"x48" ILO 22x48 At Cabover
- ☐ ☐ Window Picture 36"x48" ILO 29x48 At Dinette
- ☐ ☐ Windows Safety Glass Storms (Except Slide Out)
- ☐ ☐ Windows Safety Glass Storms (for Slide Out only)

LEGEND

FLOOR PLANS

CBD — Center Bath/Dinette
 FL — Front Lounge
 FKD — Front Kitchen/Dinette
 RBD — Rear Bath/Dinette
 SA — Side Aisle
 WCB — Walk-Thru Center Bath/Dinette
 WD — Walk-Thru Bath/Dinette
 WRKD — Walk-Thru Rear Kitchen/Dinette
 WDFD — Walk-Thru Bath/Dinette w/Front Door

SPECIFICATIONS

Dbl. — Double
 FW — Fifth Wheel
 ILO — In Lieu Of
 NA — Not Available
 O — Option
 S — Standard
 TT — Travel Trailer
 V — Volt
 W/W — White Wall



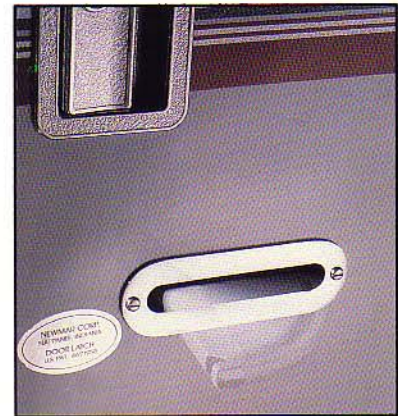
Newmar Corporation features appliances and components by these quality names to insure you of years of safe and trouble-free operation and enjoyment.

Newmar Kountry Klub

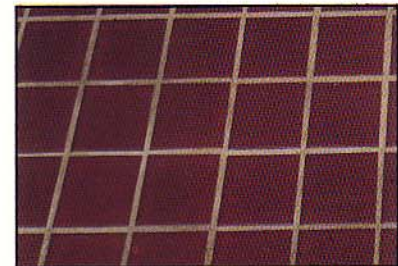
"Don't forget to check out the Klub . . . the Newmar Kountry Klub that is. All you need to be eligible is to be the proud owner of any one of the fine Newmar products!"



Optional Parquet Floor



Door Catch



Optional Ceramic Floor Tile



New Style Pantry



Travel Trailer Living Area with Slide-Out

LA-O-61 Porcelain Blue

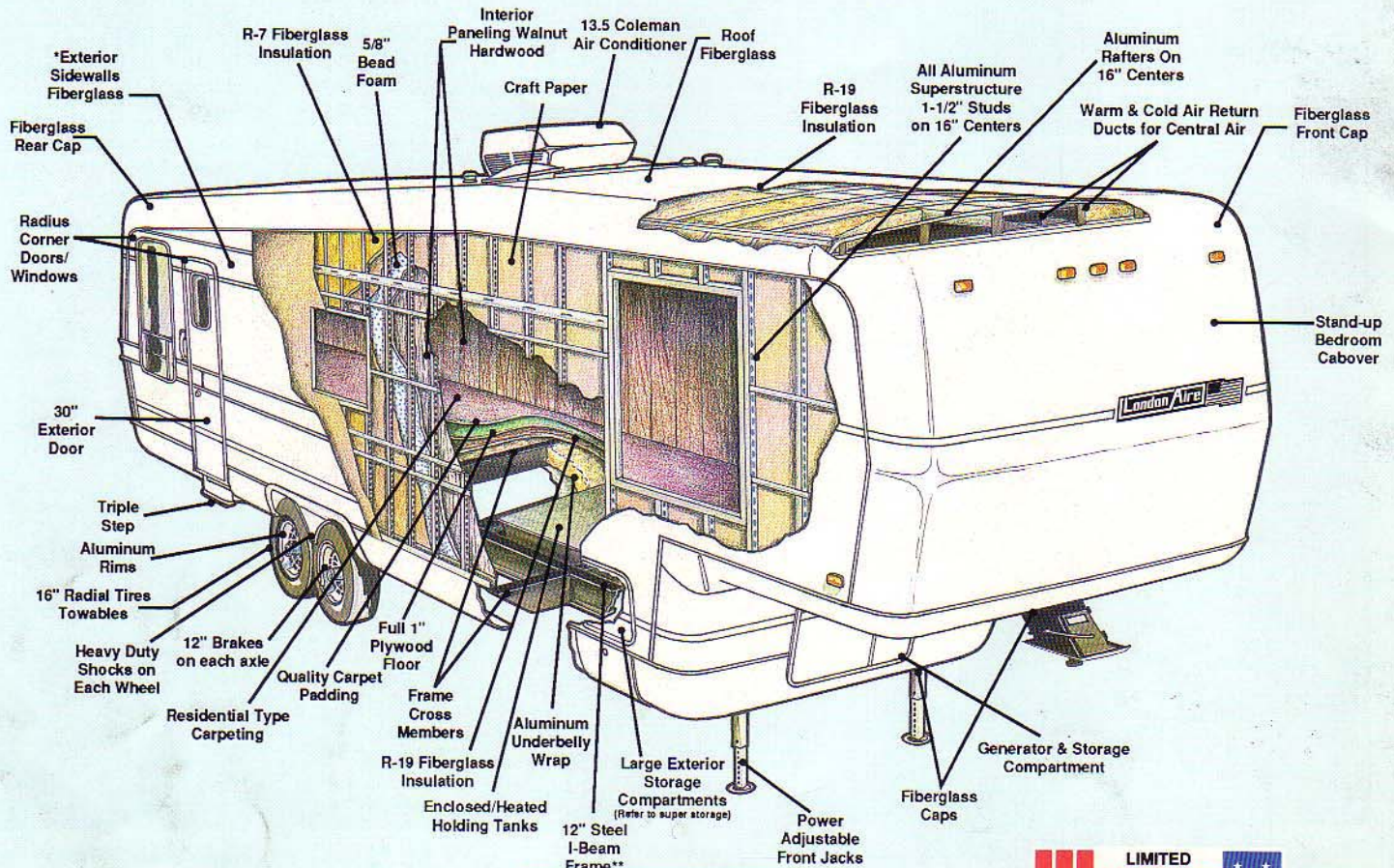


Travel Trailer Bedroom Twin Beds

LA-O-61 Porcelain Blue

The Ultimate All-Season RV

"Lifetime Limited Warranty on Superstructure"



* Standard — Exterior Sidewalls are .030 White Aluminum
Optional — 1/4" Gel-Coated Fiberglass

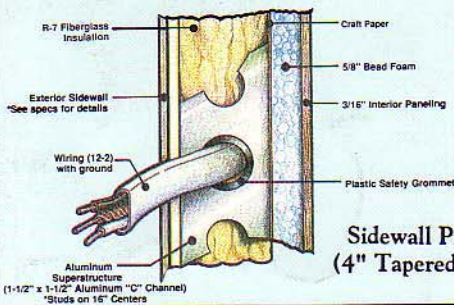
Composite "R" Factors

Sidewalls	12.8
Ceiling	24.6
* Floor	26.1

* Does not include motorized



*Aluminum Superstructure



Your nearest London Aire dealer:



Newmar Corporation, 355 North Delaware
Nappanee, IN 46550-0030, (219) 773-7791

Scheduled plant tours Monday - Friday

Prices and specs are subject to change without written notice
at Newmar's discretion with no obligation.