

1990

Motorhomes



BY



Technology Surrounded By Tradition!
American Star • Kountry Star • Kountry Aire • London Aire



American Star Mini

AS-O-72 Cinnamon Beige

MOTORHOMES by Newmar Corporation

"Technology Surrounded by Tradition"

Newmar Corporation has a motorhome for almost any purpose and to fit almost any budget. From the economical American Star Mini, the mid-range Kountry Star, the high mid-range Kountry Aire to the elite, top-of-the-line London Aire Class A's and Mini's, Newmar has a motorhome just right for you and your family.

Motorhomes aren't new to Newmar. Years of experience, expert design and engineering techniques back them. We have an innate understanding of today's motorhome enthusiasts and their needs. Experience and background such as this combines to create so many styles, colors, sizes and configurations, that you can practically custom design a motorhome to meet your own personal needs and budget.

All of these handsome motorhomes are tastefully appointed by a professional interior designer and incorporate the latest technology and equipment surrounded by Newmar's tradition of quality. Kountry Stars, Kountry Aires and London Aires are built with all-aluminum superstructures. Kountry Aire motorhomes have a *5-year Limited Warranty and London Aire is backed by a *Lifetime Limited Warranty.

WARRANTY



Browse through this color brochure and see if you don't agree that Newmar has a motorhome just right for you. Visit your nearest dealer, ask for full details on any of these four lines of motorhomes, scrutinize them personally, and find out for yourself why Newmar Corporation is "Technology Surrounded by Tradition."



Quality is #1 at Newmar Corporation, and our "Personal Touch" inspection of all products will insure you of that high quality before any RV ever leaves our plant.



Kountry Star Class A Bedroom XL Package (Optional)

KS-O-68 Crimson Maple

Newmar Kountry Klub

Don't forget to check out the Klub . . . the Newmar Kountry Klub that is. All you need to be eligible is to be the proud owner of any one of the fine Newmar products.



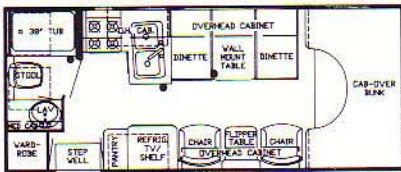
Kountry Star Lamberquins (Standard)



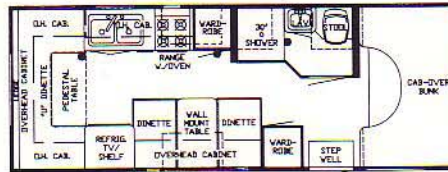
Kountry Star Ceramic Countertops (Standard Class A Only)

MINIHOME Specifications & Floorplans

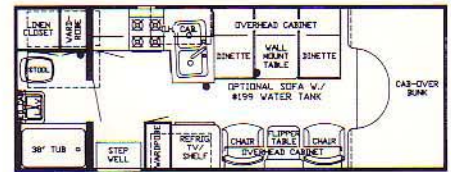
21RB (AS, KS & KA)



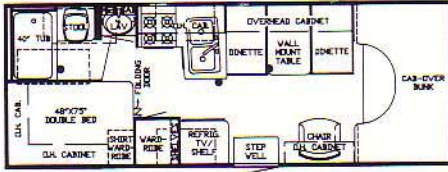
24DD (AS, KS & KA)



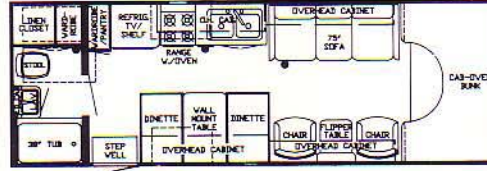
24 RB (AS, KS & KA)



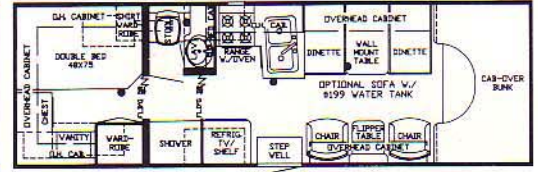
24SB(AS, KS, & KA)



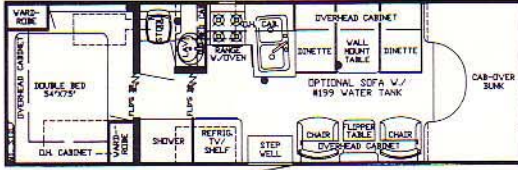
26 RBD (AS, KS & KA)



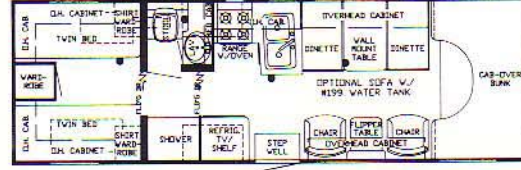
26 WCB (AS, KS, & KA)



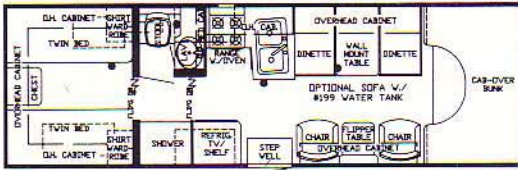
26 WCBW (AS, KS & KA)



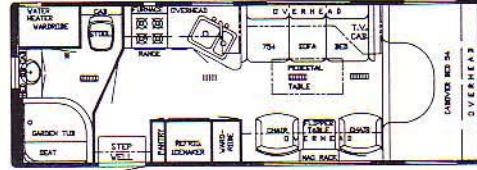
26 WCBW (AS, KS, & KA)



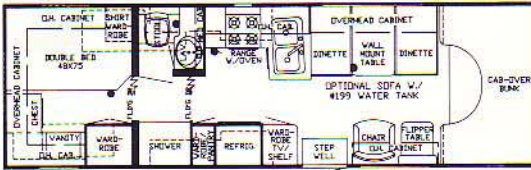
26 WCBT (AS, KS & KA)



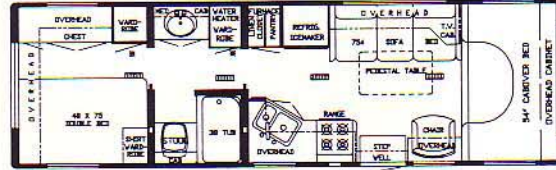
26 RBRD (LA ONLY)



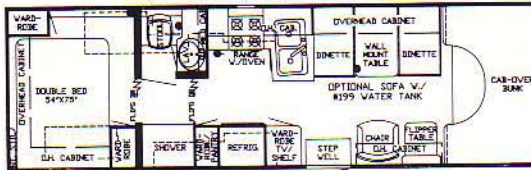
28 WCB (AS, KS & KA)



28 WCB (LA ONLY)



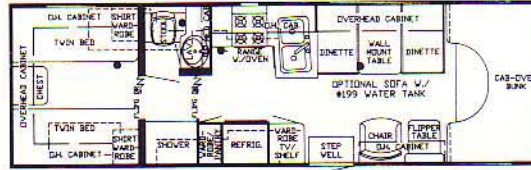
28 WCBW (AS, KS & KA)



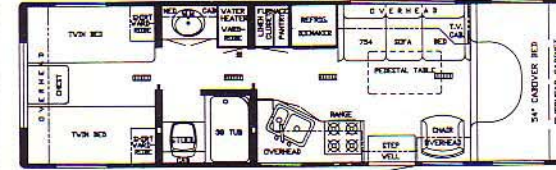
28 WCBW (LA ONLY)



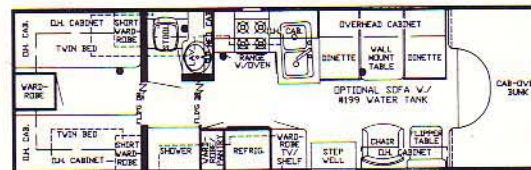
28 WCBT (AS, KS & KA)



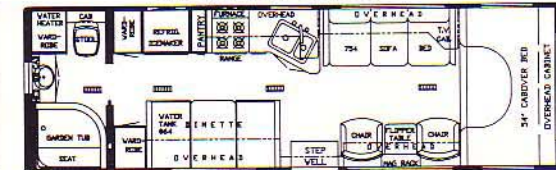
28 WCBT (LA ONLY)



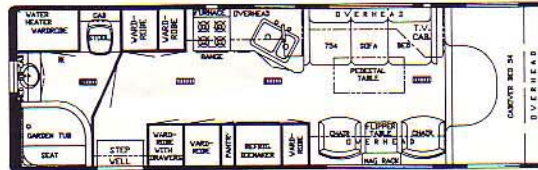
28 WCBW (AS, KS & KA)



28 RBD (LA ONLY)



28 RBRD (LA ONLY)



AS/KS MH Model	AS/KS Gross Dry Weight	AS/KS GVWR	AS/KS Front Axle	AS/KS Rear Axle(s)	Tires	Wheels	Height w/AC	Length	Width
21 RB	8,550/9,900	10,500/10,500	3,000/3,100	5,550/5,800	8.00 x 16.5D	16.5 x 6	10' 6"	22' 6"	7' 11-1/2"
24 DD	8,700/9,050	10,500/10,500	2,900/3,000	5,800/6,050	8.00 x 16.5D	16.5 x 6	10' 6"	24' 10"	7' 11-1/2"
24 RB	8,700/9,050	10,500/10,500	3,000/3,100	5,700/5,950	8.00 x 16.5D	16.5 x 6	10' 6"	24' 1"	7' 11-1/2"
24 SB	8,700/9,050	10,500/10,500	3,000/3,100	5,700/5,950	8.00 x 16.5D	16.5 x 6	10' 6"	24' 10"	7' 11-1/2"
26 RBD	9,075/9,475	11,000/11,000	3,375/3,475	5,700/6,000	215/85 R16D	16 x 6	10' 6"	26' 10"	7' 11-1/2"
26 WCB	9,300/9,700	11,000/11,000	3,200/3,300	6,500/6,400	215/85 R16D	16 x 6	10' 6"	28' 3"	7' 11-1/2"
26 WCB A	9,300/9,700	11,000/11,000	3,200/3,300	6,500/6,400	215/85 R16D	16 x 6	10' 6"	28' 3"	7' 11-1/2"
26 WCBT	9,300/9,700	11,000/11,000	3,200/3,300	6,500/6,400	215/85 R16D	16 x 6	10' 6"	28' 3"	7' 11-1/2"
26 WCBW	9,300/9,700	11,000/11,000	3,200/3,300	6,500/6,400	215/85 R16D	16 x 6	10' 6"	28' 3"	7' 11-1/2"
28 WCB	10,900/11,400	15,000/15,000	3,300/3,400	7,600/8,000	215/85 R16D	16 x 6	10' 6"	29' 1"	7' 11-1/2"
28 WCB A	10,900/11,400	15,000/15,000	3,300/3,400	7,600/8,000	215/85 R16D	16 x 6	10' 6"	29' 1"	7' 11-1/2"
28 WCBT	10,900/11,400	15,000/15,000	3,300/3,400	7,600/8,000	215/85 R16D	16 x 6	10' 6"	29' 1"	7' 11-1/2"
28 WCBW	10,900/11,400	15,000/15,000	3,300/3,400	7,600/8,000	215/85 R16D	16 x 6	10' 6"	29' 1"	7' 11-1/2"

AS = American Star KS = Kountry Star

Approximate Weights. GVWR = Gross Vehicle Weight Rating. Charts are Based on Standard Units.

Kountry Aire MH	Gross Dry Weight	GVWR	Front Axle	Rear Axle(s)	Tires	Wheels	Height w/AC	Length	Width
21 RB	9,050	10,500	3,150	5,900	215/85 R16D	16 x 6	10' 6"	22' 6"	7' 11-1/2"
24 DD	9,200	10,500	3,050	6,150	215/85 R16D	16 x 6	10' 6"	24' 10"	7' 11-1/2"
24 RB	9,200	10,500	3,150	6,050	215/85 R16D	16 x 6	10' 6"	24' 1"	7' 11-1/2"
24 SB	9,200	10,500	3,150	6,050	215/85 R16D	16 x 6	10' 6"	24' 10"	7' 11-1/2"
26 RBD	9,625	11,000	3,500	6,125	215/85 R16D	16 x 6	10' 6"	26' 10"	7' 11-1/2"
26 WCB	9,850	11,000	3,350	6,500	215/85 R16D	16 x 6	10' 6"	28' 3"	7' 11-1/2"
26 WCB A	9,850	11,000	3,350	6,500	215/85 R16D	16 x 6	10' 6"	28' 3"	7' 11-1/2"
26 WCBT	9,850	11,000	3,350	6,500	215/85 R16D	16 x 6	10' 6"	28' 3"	7' 11-1/2"
26 WCBW	9,850	11,000	3,350	6,500	215/85 R16D	16 x 6	10' 6"	28' 3"	7' 11-1/2"
28 WCB	11,550	15,000	3,450	8,100	215/85 R16D	16 x 6	10' 6"	29' 1"	7' 11-1/2"
28 WCB A	11,550	15,000	3,450	8,100	215/85 R16D	16 x 6	10' 6"	29' 1"	7' 11-1/2"
28 WCBT	11,550	15,000	3,450	8,100	215/85 R16D	16 x 6	10' 6"	29' 1"	7' 11-1/2"
28 WCBW	11,550	15,000	3,450	8,100	215/85 R16D	16 x 6	10' 6"	29' 1"	7' 11-1/2"

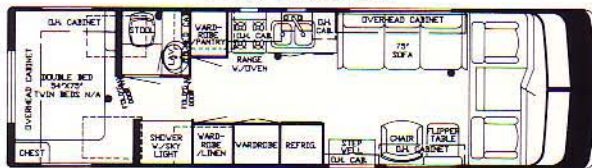
Approximate Weights. GVWR = Gross Vehicle Weight Rating. Charts are Based on Standard Units.

London Aire/MH	Gross Dry Weight	GVWR	Front Axle	Rear Axle(s)	Tires	Wheels	Height w/AC	Length	Width	Options
26 RBD	10,000	11,000	3,300	6,700	215/85 R16D	16 x 6	134"	25' 8"	93"	A
28 RBD	11,700	15,000	3,400	8,300	215/85 R16D	16 x 6	134"	28' 8"	93"	A
28 RBD	11,700	15,000	3,400	8,300	215/85 R16D	16 x 6	134"	28' 8"	93"	A
28 WCB	11,900	15,000	3,500	8,400	215/85 R16D	16 x 6	134"	28' 8"	93"	A
28 WCB A	11,900	15,000	3,500	8,400	215/85 R16D	16 x 6	134"	28' 8"	93"	A
28 WCBT	11,900	15,000	3,500	8,400	215/85 R16D	16 x 6	134"	28' 8"	93"	A

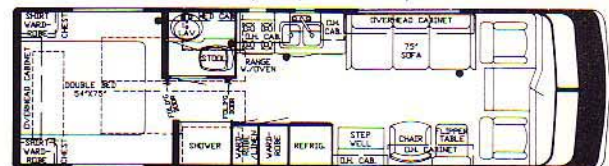
Approximate Weights. GVWR = Gross Vehicle Weight Rating. Charts are Based on Standard Units.

CLASS A MOTORHOME Specifications & Floorplans

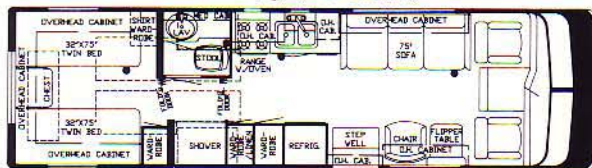
27 SB (KS & KA)



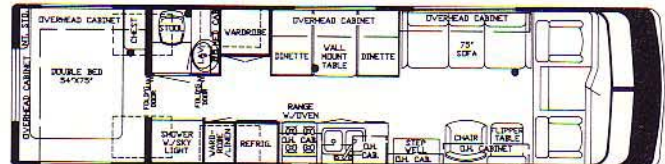
27 SB/SS (KS & KA)



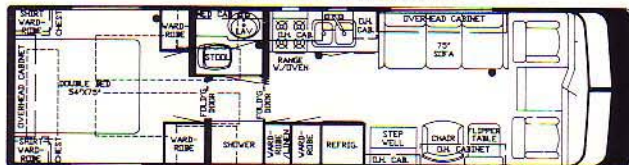
27 SBT/SS (KS & KA)



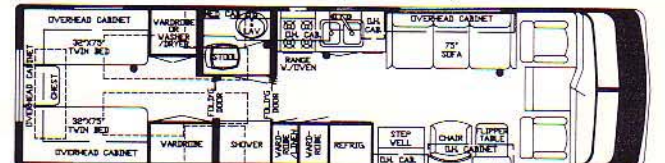
31 CBD (KS & KA)



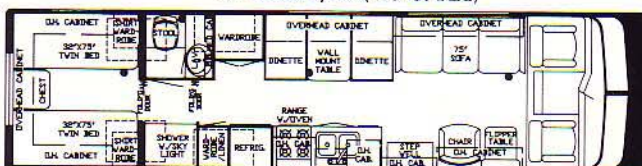
31 CB/SS (KS & KA)



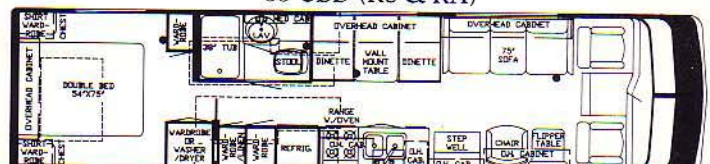
31 CBDT (KS & KA)



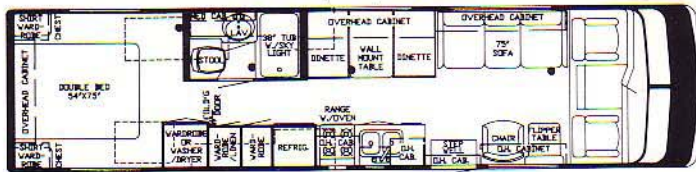
31 CBDT/SS (KS & KA)



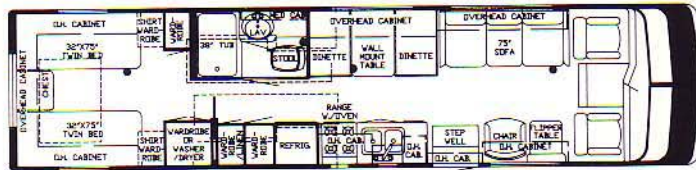
33 CBD (KS & KA)



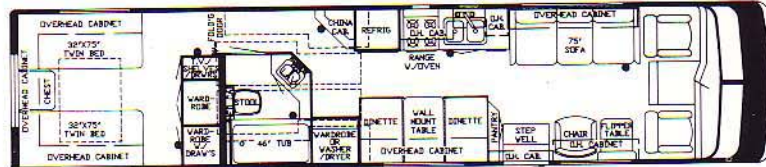
33 CBD/SS (KS & KA)



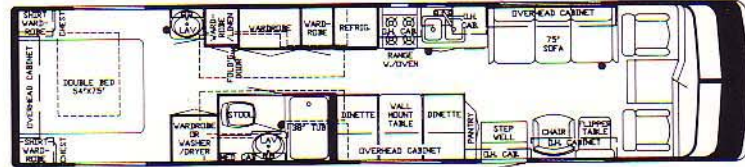
33 CBDT/SS (KS & KA)



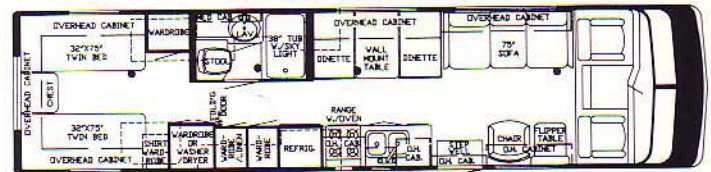
37 SACT/SS (KS & KA)



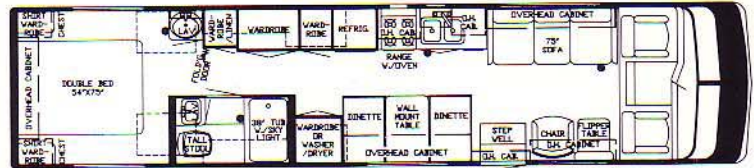
36 CBD/SS (KS & KA)



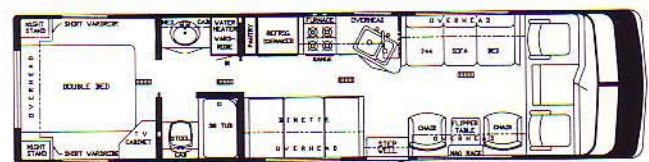
33 CBDT (KS & KA)



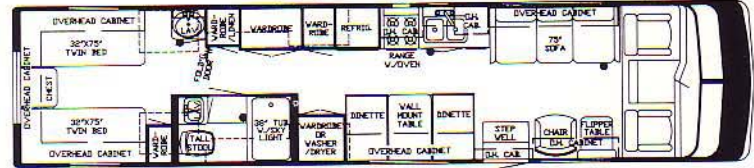
36 CBD (KS & KA)



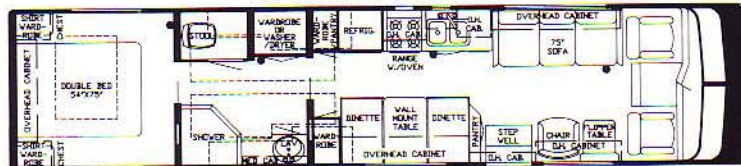
33 WCBD (LA ONLY)



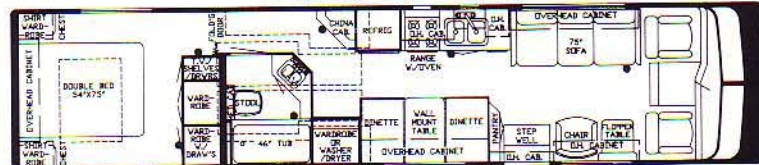
36 CBDT (KS & KA)



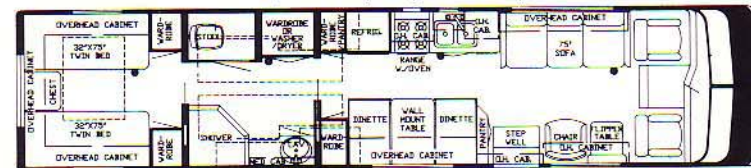
37 WCB/SS (KS & KA)



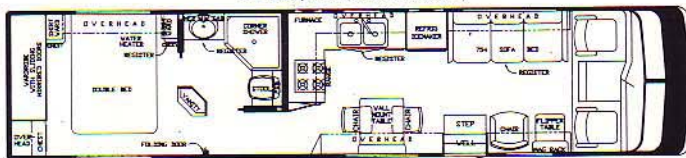
37 SACB/SS (KS & KA)



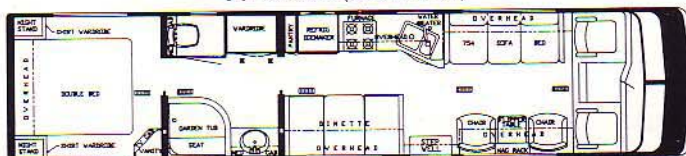
37 WCBT/SS (KS & KA)



37 SA/SS (LA ONLY)



37 WCBD (LA ONLY)



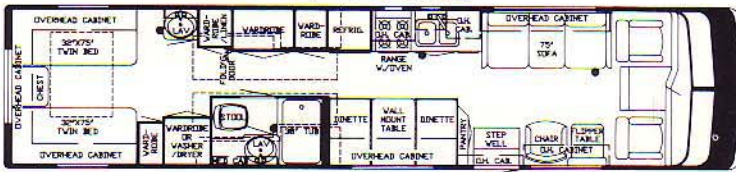
Option A



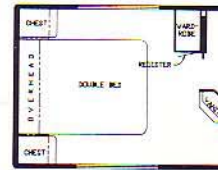
Option B



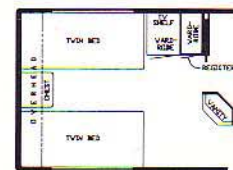
36 CBDT/SS (KS & KA)



Option C



Option D



KS/KA CA Model	KS/KA Gross Dry Weight	KS/KA GVWR	KS/KA Front Axle	KS/KA Rear Axle(s)	Tires	Wheels	Height w/AC	Length	Width
27 SB	11,900/12,000	14,500/14,500	4,100/4,125	7,800/7,875	8R x 19.5D	19.5 x 6	11' 2-3/4"	29' 8"	7' 9-1/2"
27 SB SS	12,400/12,500	14,500/14,500	4,300/4,325	8,100/8,175	8R x 19.5D	19.5 x 6	12' 1"	29' 10"	7' 9-1/2"
27 SBT SS	12,400/12,500	14,500/14,500	4,300/4,325	8,100/8,175	8R x 19.5D	19.5 x 6	12' 1"	29' 10"	7' 9-1/2"
31 CBD	12,025/12,125	14,500/14,500	3,800/3,825	8,225/8,300	8R x 19.5D	19.5 x 6	11' 2-3/4"	32' 7"	7' 9-1/2"
31 CBD SS	12,525/12,625	14,500/14,500	3,900/3,925	8,625/8,700	8R x 19.5D	19.5 x 6	12' 1"	31' 8"	7' 9-1/2"
31 CBDT	12,050/12,150	14,500/14,500	3,800/3,825	8,250/8,325	8R x 19.5D	19.5 x 6	11' 2-3/4"	32' 7"	7' 9-1/2"
31 CBDT SS	12,525/12,625	14,500/14,500	3,850/3,875	8,675/8,750	8R x 19.5D	19.5 x 6	12' 1"	31' 8"	7' 9-1/2"
33 CBD	13,700/13,850	17,000/17,000	4,050/4,100	9,650/9,750	8R x 19.5D	19.5 x 6	11' 2-3/4"	34' 7"	7' 9-1/2"
33 CBD SS	14,500/14,650	17,000/17,000	4,150/4,200	10,350/10,450	8R x 19.5D	19.5 x 6	12' 1"	34' 7"	7' 9-1/2"
33 CBDT	13,800/13,950	17,000/17,000	4,050/4,100	9,750/9,850	8R x 19.5D	19.5 x 6	11' 2-3/4"	34' 7"	7' 9-1/2"
33 CBDT SS	14,600/14,750	17,000/17,000	4,200/4,250	10,400/10,500	8R x 19.5D	19.5 x 6	12' 1"	34' 7"	7' 9-1/2"
36 CBD	14,100/14,250	18,000/18,000	4,100/4,150	10,100/10,100	8R x 19.5D	19.5 x 6	11' 2-3/4"	36' 10"	7' 9-1/2"
36 CBD SS	15,000/15,150	18,000/18,000	4,150/4,200	10,850/10,950	8R x 19.5D	19.5 x 6	12' 1"	36' 10"	7' 9-1/2"
36 CBDT	14,200/14,350	18,000/18,000	4,100/4,150	10,100/10,200	8R x 19.5D	19.5 x 6	11' 2-3/4"	36' 10"	7' 9-1/2"
36 CBDT SS	15,100/15,250	18,000/18,000	4,150/4,200	10,950/11,050	8R x 19.5D	19.5 x 6	12' 1"	36' 10"	7' 9-1/2"
37 WCB SS	15,600/15,750	18,000/18,000	4,100/4,150	11,500/11,600	8R x 19.5D	19.5 x 6	12' 1"	37' 2"	7' 9-1/2"
37 WCBT SS	15,600/15,750	18,000/18,000	4,100/4,150	11,500/11,600	8R x 19.5D	19.5 x 6	12' 1"	37' 2"	7' 9-1/2"
37 SACB SS	15,800/15,950	18,000/18,000	4,100/4,150	11,700/11,800	8R x 19.5D	19.5 x 6	12' 1"	37' 11"	7' 9-1/2"
37 SACT SS	15,800/15,950	18,000/18,000	4,100/4,150	11,700/11,800	8R x 19.5D	19.5 x 6	12' 1"	37' 11"	7' 9-1/2"

KS = Kountry Star
KA = Kountry Aire

Approximate Weights. GVWR = Gross Vehicle Weight Rating. Charts are Based on Standard Units.

London Aire/CA	Gross Dry Weight	GVWR	Front Axle	Rear Axle(s)	Tires	Wheels	Height w/AC	Length	Width	Options
33 WCB	15,200	18,000	4,400	10,800	8R x 19.5D	19.5 x 6	145"	34' 5"	96"	A
37 SA SS	16,200	18,000	4,500	11,700	8R x 19.5D	19.5 x 6	145"	37' 3"	96"	C, D
37 WCB	16,200	18,000	4,500	11,700	8R x 19.5D	19.5 x 6	145"	37' 3"	96"	B

Approximate Weights. GVWR = Gross Vehicle Weight Rating. Charts are Based on Standard Units.

MOTORIZED Standards and Options

MI MI MI MI	CA CA CA	
AS KS KA LA	KS KA LA	AIR CONDITIONING, HEATING & LP GAS
O O NA NA	O NA NA	Air Cond. Coleman 11.0 BTU (ea.)
NA NA NA S	NA S S	Air Cond. Central Coleman 13.5 BTU w/Wall Thermostat (1)
O O NA NA	O NA NA	Air Cond. Coleman 13.5 BTU (ea.)
NA NA NA O	NA O O	Air Cond. Central Coleman 13.5 BTU w/Wiring & Wall Thermostat (extra)
NA O S NA	O NA NA	Air Cond. Emerson 13.5 Ducted (1)
NA O O NA	O NA NA	Air Cond. Emerson 13.5 Ducted (extra)
O O NA NA	O NA NA	Air Cond. Prep for 2nd Air, Not Ducted
S S NA NA	S NA NA	Air Cond. Prep (w/Wiring)
S S NA NA	NA NA NA	Furnace 20M Electronic Ignition (Excalibur)
NA NA NA S	NA NA NA	Furnace 25M Electronic Ignition (Up to 36") (Excalibur)
NA NA S S	NA NA NA	Furnace 31M Electronic Ignition (Excalibur)
NA NA NA NA	S NA NA	Furnace 31M Electronic Ignition (Excalibur) (36" & up)
O O NA NA	O NA NA	Furnace 35M Electronic Ignition ILO Std. (Excalibur)
NA NA NA NA	NA S S	Furnace 35M Electronic Ignition (Excalibur)
O O O NA	O NA NA	Heat Strip for Air Cond.
NA NA NA S	NA NA S	Heat Under Floor Ducted
NA NA NA O	O O S	Heater Auxiliary in Bedroom
S S S S	S S S	LP Gas Tank 15 Gal.
NA NA NA O	O O O	LP Gas Tank 32 Gal. ILO 15 Gal.
APPLIANCES & ACCESSORIES		
S S NA NA	S NA NA	Bath Acc. (3 towel bars, tis. hldr., 2 towel rings, 1 robe hook)
NA NA S S	NA S S	Bath Acc. (1 towel bar, tis. hldr., 1 towel ring, 1 robe hook)
NA NA O S	NA O S	Clothes Line in Tub/Shower (Retractable)
S S NA NA	NA NA NA	Faucet for Lavatory Dbl. Handle Mixing
NA NA S NA	S S NA	Faucet for Lavatory Dbl. Handle Mixing (Brass)
NA NA NA S	NA NA S	Faucet for Lavatory Deluxe Dbl. Handle w/Pop up Plug (Gold)
S S NA NA	NA NA NA	Faucet for Shower Dbl. Handle Mixing w/Spigot

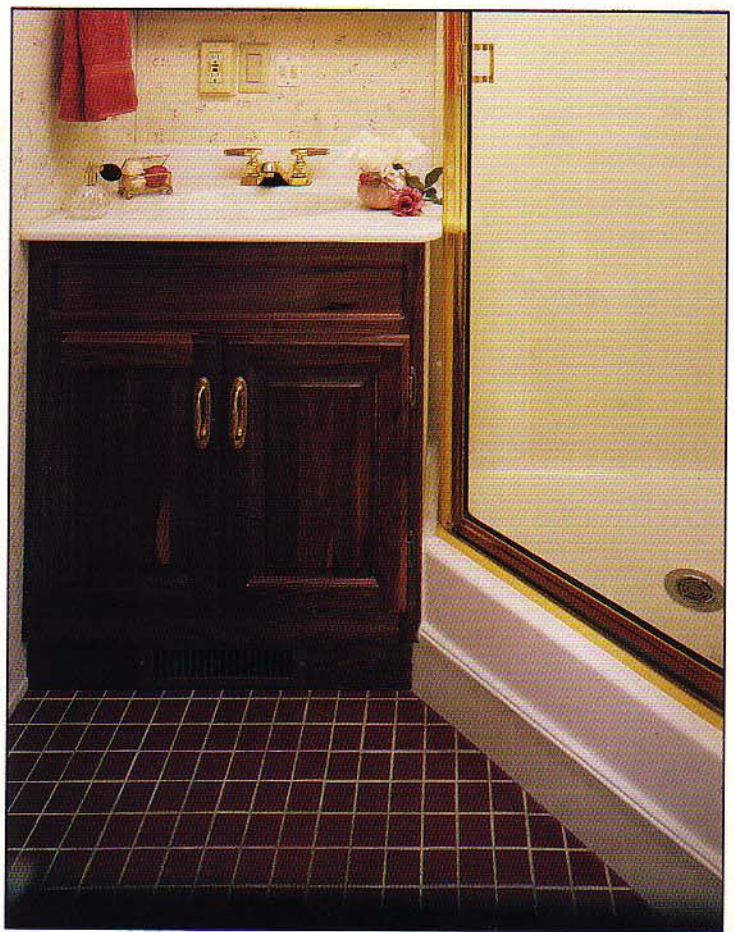
MI MI MI MI	CA CA CA	
AS KS KA LA	KS KA LA	APPLIANCES & ACCESSORIES - Cont.
NA NA S NA	S S NA	Faucet for Shower Dbl. handle w/Spigot (Brass)
NA NA NA S	NA NA S	Faucet for Shower Single Handle w/Spigot (Gold)
S S NA NA	NA NA NA	Faucet for Sink Dbl. Handle
NA NA NA S	NA NA S	Faucet for Sink Single Handle Deluxe Hi Rise (Chrome)
NA NA S NA	S S NA	Faucet for Sink Single Handle (Chrome)
NA NA O S	NA O S	Food Center Nutone (Blender)
NA NA NA S	NA NA S	Hair Dryer
NA NA S S	NA S S	Magazine Rack in Bath Area (where applic.)
O O O S	O S S	Microwave Oven Conv. 30" (Sharp) w/Light/Fan & 4-Burner Hot Plate
NA NA O NA	NA NA NA	Microwave Oven Spacemaker GE
O O O NA	O NA NA	Microwave Oven 22" (Sharp Carousel)
S S S NA	S NA NA	Microwave Prep 22-1/4" W x 15" H
NA NA S NA	NA NA NA	Range 4-Burner 22" w/Pilot Top & Oven
S S NA NA	S NA NA	Range Larger 4-Burner Porcelain, Blk. Glass Door w/Pilot Top & Oven
O O S S	S S S	Range Cover Bi-Fold Deluxe
S S S NA	S NA NA	Range Hood w/Light & Fan
NA NA NA O	NA NA NA	Refr. Dometic Double Door 2601 2-Way ILO 662
NA O NA NA	NA NA NA	Refr. Dometic Double Door 2601 2-Way ILO 452
NA NA O NA	NA O NA	Refr. Dometic 3801 AES ILO Norcold (3-Way)
NA NA O NA	NA O NA	Refr. Dometic 4801 AES w/Ice Maker ILO Norcold (3-Way)
NA NA NA S	NA NA S	Refr. Dometic 4801 AES w/Ice Maker w/Raised Panel Insert
NA NA NA O	O NA NA	Refr. Norcold Double Door 682 ILO 662
NA O NA NA	NA NA NA	Refr. Norcold Double Door 682 ILO 452
NA NA S NA	NA S NA	Refr. Norcold Double Door 683 3-Way (where applic.)
NA O NA NA	NA NA NA	Refr. Norcold Double Door 683 3-Way ILO 452 (where applic.)
NA NA NA NA	O NA NA	Refr. Norcold Double Door 683 ILO 662



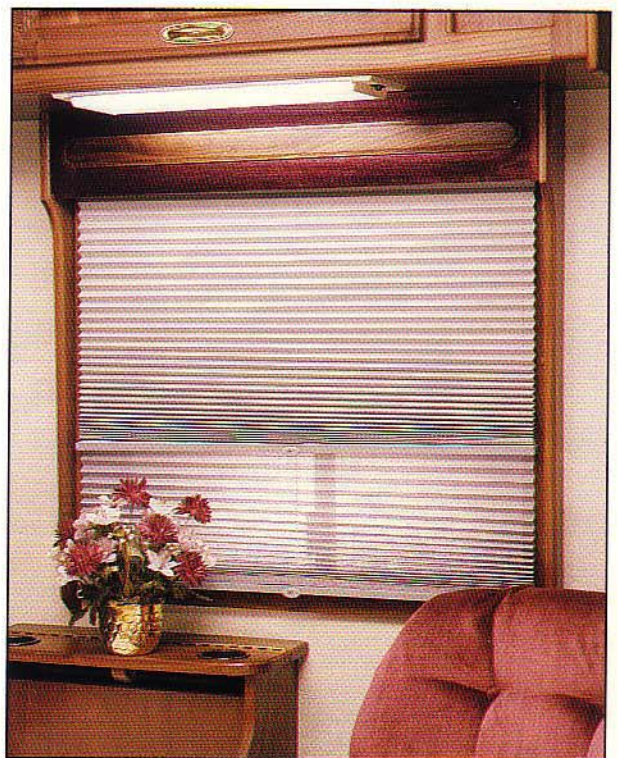
London Aire Class A



LA-O-63 Ruby Cream



London Aire Class A Bath/Opt. Ceramic Floor



London Aire Standard Lamberquins

MI	MI	MI	MI	CA	CA	CA	
AS	KS	KA	LA	KS	KA	LA	APPLIANCES & ACCESSORIES - Cont.
S	S	NA	NA	NA	NA	NA	Refr. Norcold Single Door 452 2-Way
O	O	NA	NA	NA	NA	NA	Refr. Norcold Double door 662 ILO 452
NA	NA	NA	NA	S	NA	NA	Refr. Norcold Double Door 662
NA	NA	O	O	NA	O	O	Safe (where applic.)
NA	NA	NA	NA	O	O	NA	Shower Exterior Hook Up
S	S	NA	NA	S	NA	NA	Sink Cover/Cutting Board
NA	NA	S	NA	S	NA	NA	Sink Covers/Cutting Boards (2)
NA	NA	NA	S	NA	NA	S	Sink Covers/Corian (2)
S	S	S	NA	S	S	NA	Sink Deep Dbl. Porcelain
NA	NA	NA	S	NA	NA	S	Sink Deep Dbl. Stainless
S	S	S	NA	S	S	NA	Stool Aqua Magic Starlite
NA	NA	NA	S	NA	NA	S	Stool Aqua Magic Galaxie w/Padded Lid
O	S	S	S	S	S	S	Tub or Shower Fiberglass
S	NA	NA	NA	NA	NA	NA	Tub or Shower w/Curtain
O	NA	NA	NA	NA	NA	NA	Tub Surround
O	O	S	S	O	S	S	Tub or Shower Enclosure Door
NA	NA	NA	S	NA	NA	S	Vacuum System Portable
NA	NA	NA	NA	O	O	NA	Washer/Dryer Norcold 1-piece (certain models)
NA	NA	NA	NA	O	O	NA	Washer & Dryer Sears 2-piece (see floor plans)
NA	NA	NA	NA	O	O	NA	Washer/Dryer Prep. - Plumbing, Recept. & Shelf (certain models)
NA	NA	S	S	NA	S	S	Waste Basket
O	O	O	S	O	O	S	Water Heater Bypass Kit
S	NA	NA	NA	NA	NA	NA	Water Heater Gas 6 Gal.
O	S	S	NA	S	S	NA	Water Heater Gas 6 Gal. w/Elect. Ign.
NA	NA	NA	NA	O	O	NA	Water Heater Gas/Elec. 10 Gal. w/Reignitor ILO Std.
NA	NA	NA	S	NA	NA	S	Water Heater Gas/Elec. 6 Gal. Fast Recovery w/Elect. Ign. & Engine Assist
NA	NA	O	S	NA	O	S	Water Filtering System (Drink Dispenser & Ice Maker)
							CABINETS & FURNITURE
S	S	S	S	S	S	S	Bed Double (see floor plan)
NA	NA	NA	NA	O	O	O	Bed Queen (60" x 75") w/Spread & Sham (where applic.)
NA	NA	NA	NA	NA	NA	O	Bed Twin (32" x 75") ILO Dbl. w/Spreads & Shams
S	S	S	S	S	S	NA	Bed Twin (32" x 75") (see floor plan)
NA	NA	NA	NA	NA	NA	S	Cabinet for TV & Make-up Mirror in Bedroom
S	S	S	S	S	S	S	Cabinet Medicine w/Mirror Doors
S	S	S	S	S	S	S	Cabinet Night Stand(s) (see floor plan)
S	S	NA	NA	NA	NA	NA	Cabinetry Oak w/Hardwood Frame Doors
NA	NA	S	NA	NA	NA	NA	Cabinetry Oak w/Raised Panel Doors
NA	NA	NA	O	NA	NA	O	Cabinetry Oak w/Raised Panel Doors ILO Walnut
NA	NA	O	NA	S	S	NA	Cabinetry Oak Hardwood w/Raised Panel Doors
NA	NA	NA	S	NA	NA	S	Cabinetry Walnut Hardwood w/Raised Panel Doors
NA	NA	NA	NA	NA	NA	O	Chair Recliner w/Foot Rest
S	S	S	S	S	S	S	Chair(s) Barrel (where applic.)
O	O	O	NA	O	O	NA	Countertop Extension (where applic.)
O	O	O	O	O	NA	NA	Dinette ILO Sofa
S	S	S	S	S	S	S	Dinette w/Inner Springs & Fabric Covered Ends (see floor plan)
NA	NA	NA	S	NA	NA	S	Doors or Drawers under Dinette for Easy Access
S	S	S	NA	S	S	NA	Door(s) under Dinette for Easy Access
NA	NA	S	S	NA	S	S	Drawer Wood w/Silverware Tray
NA	NA	O	S	NA	O	S	Drawers Wood w/Metal Guides & Side Rollers
O	O	NA	NA	O	NA	NA	Drawer Below Dinette Seat (ea.)
S	S	S	NA	S	S	NA	Drawers Wood Double Roller Guides
NA	O	O	O	NA	NA	NA	Entertainment Center ILO Curtains, Matt. & Windows
S	S	S	S	S	S	S	Headboards Decorative (where applic.)
O	O	S	S	S	S	S	Lifts for Convenient Storage Under Fixed Beds (ea.)
NA	NA	NA	S	NA	NA	S	Pantry Slide-Out (see floor plan)
NA	NA	NA	NA	O	O	NA	Seat 6-way Power ILO Std.
NA	NA	NA	NA	NA	S	NA	Seat Driver 6-way Power Swivel & Recliner
S	S	S	S	S	NA	NA	Seat Driver/Passenger Swivel & Recliner
NA	NA	NA	NA	NA	O	S	Seat Driver/Passenger 6-way Power Swivel & Recliner Leather/Vinyl Comb.
S	S	S	S	S	S	S	Snack Tray on Engine Cover w/Cassette Holder
S	S	S	NA	S	S	NA	Sofa Bed Built-In (where applic.)
O	O	O	NA	O	O	NA	Sofa w/Pedestal Table ILO Dinette (where applic.)
NA	NA	O	S	NA	O	S	Sofa Bed 12V Powered
S	S	S	S	S	S	S	Spice Rack (Hand Crafted)
NA	NA	NA	S	S	S	NA	Table Free Standing Pedestal (see floor plan)
S	S	S	S	S	S	S	Table/Chest w/Cupholder Between Chairs (where applic.)
							CHASSIS FEATURES
S	S	S	S	S	S	S	Brakes Power
NA	NA	NA	NA	S	S	S	Chassis - Chevy (454 CID Engine) w/Radial Tires w/78-Gal. Tank
S	S	NA	NA	NA	NA	NA	Chassis - Chevy (350 CID Engine) w/Polyester Tires w/35-Gal. Tank (21' - 24')
NA	NA	S	S	NA	NA	NA	Chassis - Ford (460 CID Engine) w/Radial Tires w/42-Gal. Tank

MI	MI	MI	MI	CA	CA	CA	
AS	KS	KA	LA	KS	KA	LA	CHASSIS FEATURES - Cont.
S	S	NA	NA	NA	NA	NA	Chassis - Ford (460 CID Engine) w/Radial Tires w/42-Gal. Tank (26' & up)
O	O	NA	NA	NA	NA	NA	Chassis - Ford (460 CID Engine) w/Radial Tires w/42-Gal. Tank (21' - 24')
NA	NA	NA	NA	O	O	O	Chassis - Ford (460 CID Engine) w/Radial Tires w/78-Gal. Tank
NA	NA	NA	NA	O	O	O	Chassis - Oshkosh (460 CID Ford Engine) w/Radial Tires w/90-Gal. Tank
NA	NA	NA	NA	O	O	O	Chassis - Oshkosh (Diesel) w/Radial Tires w/90-Gal. Tank (Must add LP Conversion for Generators)
S	S	S	S	S	S	S	Cruise Control
S	S	S	S	S	S	S	Heater/Air Conditioner High Output Automotive
NA	NA	S	S	NA	NA	NA	Power Window & Door Locks Driver & Passenger
S	S	S	S	S	S	S	Power Steering
NA	NA	NA	NA	NA	S	S	Steering Wheel Custom Simulated Leather (Chevy)
S	S	S	S	S	S	S	Steering Wheel Tilt
S	S	S	S	S	S	S	Transmission Automatic
S	S	S	S	S	S	S	Transmission Cooler
O	O	NA	NA	NA	NA	NA	Transmission Cooler Auxiliary (Chevy cutaway chassis)
S	S	S	S	S	S	S	Transmission Cooler Auxiliary (except Chevy cutaway chassis)
S	S	S	S	S	S	S	Windshield Tinted
S	S	S	S	S	S	S	Intermittent Wipers
							ELECTRICAL & LIGHTING EQUIPMENT
NA	NA	NA	NA	NA	NA	S	Battery 115 AMP Sears Die Hard Deep Cycle (2)
S	S	S	S	S	S	NA	Battery 115 AMP Sears Die Hard Deep Cycle
NA	NA	NA	NA	O	O	NA	Battery 115 AMP Sears Die Hard Deep Cycle Extra
NA	NA	O	S	O	O	S	Battery Disconnect
S	S	S	S	S	S	S	Battery Isolator
O	O	O	S	O	O	S	CB Radio w/Antenna
S	S	NA	NA	S	NA	NA	Converter 40 AMP w/Charger
NA	NA	S	S	NA	S	S	Converter 50 AMP w/Charger
NA	NA	NA	NA	NA	NA	S	Cord Electrical w/Auto. Rewind (30 AMP only)
S	S	S	S	S	S	S	Electrical Service 30 AMP
NA	O	O	O	O	O	O	Electrical Service 50 AMP ILO 30
NA	NA	NA	NA	S	S	S	Fans Defroster Driver & Passenger (built-in)
NA	NA	O	NA	NA	NA	NA	Gen. 4.0kw Onan w/1 Remote Switch & Auto. Changeover
O	O	NA	NA	O	NA	NA	Gen. 4.0kw Onan w/1 Remote Switch
NA	NA	NA	NA	O	NA	NA	Gen. 6.5kw Onan w/1 Remote Switch
NA	NA	NA	O	NA	O	O	Gen. 6.5kw Onan w/2 Remote Sw. & Auto. Changeover ILO Kohler
NA	NA	NA	NA	NA	O	O	Gen. 6.5kw Honda 110V w/2 Remote Sw. & Auto. C/O ILO Kohler
NA	NA	NA	NA	O	NA	NA	Gen. 6.5kw Honda 110V w/1 Remote Switch
NA	NA	NA	NA	NA	O	NA	Gen. 7.0kw Kohler w/2 Remote Sw. & Auto. C/O ILO 4.5 Kohler
NA	NA	NA	NA	NA	NA	S	Gen. 7.0kw Kohler w/2 Remote Switch & Auto. Changeover
NA	NA	O	S	NA	S	NA	Gen. 4.5kw Kohler w/2 Remote Switch & Auto. Changeover
O	O	NA	NA	O	NA	NA	Gen. 4.5kw Kohler w/1 Remote Switch
S	S	NA	NA	NA	NA	NA	Gen. Prep. (110V/wire, remote start wire & door)
NA	NA	NA	NA	S	NA	NA	Gen. Prep. (auto. changeover, 110V wire, remote start wire & door)
NA	NA	S	NA	NA	NA	NA	Gen. Prep. (auto. changeover, 12V cable, remote start wire & door)
NA	NA	NA	NA	O	O	O	Gen. LP Conversion
NA	NA	NA	NA	O	O	S	Horn Trumpet (on roof)
NA	NA	S	S	NA	S	S	Light at Gate Valve Area
S	S	S	S	S	S	S	Light Exterior Patio w/Inside Switch
NA	NA	S	NA	NA	S	NA	Light Fixture Deluxe Over Dinette
NA	NA	NA	S	NA	NA	S	Light Fixture Deluxe Over Dinette & Fixed Bed
NA	NA	Remote	Controlled	(roof spot/flood)			Light Remote Controlled (roof spot/flood)
NA	NA	NA	NA	NA	S	S	Light under hood
NA	NA	S	S	NA	S	S	Lighting 12-Volt Fluorescent (w/Wall Switch)
O	O	NA	NA	O	NA	NA	Lighting Fluorescent Dbl. Surface Mount (ea.) (Choose Location)
NA	NA	S	S	NA	S	S	Lights Tube Behind Glass Doors
NA	NA	NA	NA	NA	O	S	Lights Docking (Recessed in Side)
O	O	O	O	O	O	O	Light Exterior Security (ea.) (Choose Location)
O	O	O	S	O	O	S	Lights Fog
NA	NA	S	S	NA	S	S	Lights in Wardrobe w/Automatic Switches
NA	NA	O	S	NA	S	S	Lights Interior Courtesy
NA	S	S	S	S	S	S	Lights Running & Backup Recessed
S	S	S	S	S	S	S	Monitor Panel
NA	NA	O	O	NA	O	O	Stereo Deluxe AM/FM Compact Disc ILO Std.
NA	NA	NA	NA	NA	NA	S	Radio/Ant., AM/FM Stereo Cass., Clock & 2 Speakers (bedroom)
S	S	S	S	S	S	S	Radio/Ant., AM/FM Stereo Cass., Clock & 4 Spkr. (CBD Models 6 Spkr.)
S	S	S	S	S	S	S	Recept. 110V GFI (interior & exterior)

MI	MI	MI	MI	CA	CA	CA	
AS	KS	KA	LA	KS	KA	LA	ELECTRICAL & LIGHTING EQUIPMENT - Cont.
NA	NA	O	O	NA	O	O	Recept. GFI Protected 110V Exterior (extra)
NA	NA	O	O	NA	O	O	Recept. 110V Interior (extra) (Choose Location)
O	O	O	O	S	S	S	Switch for Emergency Chassis Engine Start
NA	NA	S	S	S	S	NA	Switch Shut-off for Bedroom Speakers
O	O	O	O	O	O	O	Telephone Jack Extra Interior (Choose Location)
O	O	O	S	O	O	S	Telephone Hook-up w/1 Jack (Choose Location)
NA	NA	NA	NA	NA	S	S	Trip Meter for Convenience Mileage Check
S	S	NA	NA	S	NA	NA	TV Antenna w/Power Booster & 1 Jack
NA	NA	S	S	NA	S	S	TV Antenna w/Power Booster & 2 Jacks
NA	NA	NA	S	S	S	S	TV Color AC 13" w/Remote Control (Living Area Built-In)
NA	NA	NA	NA	NA	NA	S	TV Color AC/DC 9" w/Remote Control in Bedroom (Built-In)
O	O	O	S	O	O	S	TV Jack Exterior on Door Side
O	O	NA	NA	O	NA	NA	TV Jack Interior Extra (by recept.) (Choose Location)
NA	NA	O	O	NA	O	O	TV Jack w/Splitter (extra) (Choose Location)
NA	NA	NA	O	O	S	S	TV Monitor Closed Circuit Rear View & Back Up Lights
O	O	NA	NA	O	NA	NA	TV Shelf, Jack & Recept. (Choose Location)
S	S	S	S	S	S	S	TV Cable Hook Up
NA	NA	NA	NA	NA	NA	S	TV Shelf/Cabinet (Bedroom)
NA	NA	S	NA	NA	S	NA	TV Shelf/Mirror w/Remote Shut-off Switch (bedroom where applic.)
O	O	O	NA	O	O	NA	VCR Prep (where applic.)
NA	NA	O	S	O	O	S	VCR w/Newmar Tape
NA	NA	NA	NA	O	O	O	TV Satellite Dish 6' A&E (where applic.)

EXTERIOR ACCESSORIES

S	S	S	NA	NA	NA	NA	Bumper Cover Aluminum
S	S	S	S	S	S	S	Bumper Front Auto. Style w/Chrome Grill
NA	NA	NA	S	S	S	S	Bumper Rear Auto. Style w/Storage Comp.
S	S	S	NA	NA	NA	NA	Bumper w/Sewer Hose Storage
NA	S	S	S	S	S	S	Exterior Front & Rear Gelcoated Fiberglass End Caps
O	S	S	S	S	S	S	Exterior Sides Gelcoated Fiberglass (per ft.)
O	O	O	S	O	O	S	Ladder & Roof Rack
NA	NA	NA	NA	O	O	S	Mirrors Exterior w/Convex, Remote Control, Defrost & Turn Sig.
NA	NA	NA	NA	O	S	NA	Mirrors Exterior w/Convex & Defrost
NA	NA	O	S	NA	O	S	Roof Gelcoated Fiberglass (per ft.)
S	S	S	NA	S	S	NA	Roof Rubber
S	S	S	NA	NA	NA	NA	Running Boards Aluminum
NA	NA	O	S	NA	NA	NA	Running Boards Fiberglass
NA	NA	NA	NA	S	S	S	Spoiler Deluxe Incomp. w/Front Bumper
NA	NA	NA	NA	S	S	S	Step Double 12-Volt Auto. w/Non-Skid Surface
NA	NA	NA	NA	S	S	S	Step Fold Down in Front Bumper
O	O	S	S	NA	NA	NA	Step Single 12-Volt Auto. w/Non-Skid Surface
S	S	NA	NA	NA	NA	NA	Step Single Manual
S	S	S	S	S	S	S	Storage Exterior Compartment(s)
NA	NA	NA	S	NA	NA	S	Storage Exterior Slide Out Drawer 29"
NA	NA	NA	NA	NA	NA	S	Storage Exterior Slide Out Drawer 35" (24" in 33")
NA	NA	NA	NA	NA	NA	S	Storage Exterior Slide Out Drawer 48"
NA	NA	O	O	NA	O	O	Storage Roof Pod 10 cu. ft.
NA	NA	O	O	NA	O	O	Storage Roof Pod 21 cu. ft.
NA	NA	NA	NA	NA	NA	O	Super Storage 33' - 37'
S	S	S	S	S	S	S	Carpeting in Storage Compartments

INTERIOR FEATURES

NA	NA	NA	NA	NA	NA	O	Air Mattress for Queen or Twin Beds
O	S	S	S	S	S	S	Bedspread Quilted w/Matching Shams & Accent Pillow Dbl. (ea.)
O	S	S	NA	S	S	NA	Bedspread Quilted w/Matching Shams & Accent Pillow Twin (1 pr.)
NA	NA	S	NA	NA	S	NA	Cabinet Doors w/Decorative Etched Glass
NA	NA	NA	S	NA	NA	S	Cabinet Doors w/Decorative Glass
NA	O	O	NA	S	O	NA	Ceiling Perforated Vinyl
NA	NA	S	S	NA	S	S	Ceiling Woven Soft Touch
NA	NA	NA	S	NA	NA	S	Countertop Corian Kitchen, Dinette & Bath
O	O	O	NA	S	S	NA	Countertop Ceramic Tile
O	NA	NA	NA	NA	NA	NA	Decor Package KSO68, KSO69 & KSO70
NA	NA	S	S	NA	S	S	Door Frame Cushioned
NA	NA	S	S	NA	S	S	Floor Covering, Carpet w/9/16" Deluxe Pad Throughout
S	S	NA	NA	S	NA	NA	Floor Covering, Carpet w/Pad Throughout
NA	NA	O	O	NA	O	O	Floor Covering, Hardwood Parquet in Kitchen Area ILO Carpet
O	O	O	NA	O	O	NA	Floor Covering, Vinyl in Kitchen Area ILO Carpet
NA	NA	NA	NA	NA	NA	O	Floor Covering Ceramic Tile in Bath Area ILO Carpet
NA	NA	S	S	NA	S	S	Mirror(s) Bevelled & Etched w/Decorative Wood Frame
S	S	NA	NA	S	NA	NA	Mirror(s) Decorative w/Wood Frame
S	S	S	S	S	S	S	Privacy Drapes (fabric lined) for Windshield
NA	NA	NA	S	NA	NA	S	Window Garnish Hardwood (Residential Style)
S	S	NA	NA	S	NA	NA	Window Treatmt. Mini Blinds, Lamberquins (Living/Din. Area)
NA	NA	S	S	NA	S	S	Window Treatmt. Mini Blinds (Kitchen & Bath)

MI	MI	MI	MI	CA	CA	CA	
AS	KS	KA	LA	KS	KA	LA	INTERIOR FEATURES - Cont.
S	S	NA	NA	S	NA	NA	Window Treatmt. Roller Shade to Match Wall (Bath only)
S	S	NA	NA	S	NA	NA	Window Treatmt. Roller Shades w/Draper/Val. & Tie Backs (Bedroom)
NA	NA	S	S	NA	S	S	Window Treatmt. Day/Night Soft Shades, Lamberquins (Liv. & Bedroom)
O	O	NA	NA	NA	NA	NA	XL Package Interior & Exterior
S	S	NA	NA	NA	NA	NA	XL Bath Accessories Brass
S	S	NA	NA	NA	NA	NA	XL Bath Lav. & Tub Faucet Deluxe Brass
S	S	NA	NA	NA	NA	NA	XL Kitchen Faucet Single Handle
S	S	NA	NA	NA	NA	NA	XL Bi-fold Range Cover
S	S	NA	NA	NA	NA	NA	XL Black Glass Door on Refer
S	S	NA	NA	NA	NA	NA	XL Deluxe Brass Complexion Light in Bathroom w/Wall Switch
S	S	NA	NA	NA	NA	NA	XL Deluxe Din. Light w/Wall Switch
S	S	NA	NA	NA	NA	NA	XL Deluxe Raised Panel Doors ILO Std.
S	S	NA	NA	NA	NA	NA	XL Sofa Throw Pillows
S	S	NA	NA	NA	NA	NA	XL Lifts for Convenient Storage Under Fixed Beds
S	S	NA	NA	NA	NA	NA	XL Step Single 12-Volt Auto. ILO Std.

PLUMBING SYSTEMS

NA	NA	O	O	O	O	O	Heat Pads for Holding Tanks 110V
S	S	S	S	S	S	NA	Hook Up for City Water
O	O	O	O	O	O	O	Insulated Holding Tanks
NA	NA	O	S	NA	O	S	Sewage Holding Tank Rinse
NA	NA	NA	S	NA	NA	S	Sewage Hose Holder
S	S	S	S	NA	NA	NA	Tank Gray Water 25-Gal. (Approx.)
NA	NA	NA	NA	S	S	S	Tank Gray Water 30-Gal. (Approx.)
NA	NA	NA	NA	S	S	NA	Tank Gray Water 50-Gal. (Approx. SS models)
S	S	S	S	NA	NA	NA	Tank Sewage Holding 25-Gal. (Approx.)
NA	NA	NA	NA	S	S	NA	Tank Sewage Holding 28-Gal. (Approx.)
NA	NA	NA	NA	NA	NA	S	Tank Sewage Holding 48-Gal. (Approx.)
NA	NA	NA	NA	S	S	NA	Tank Sewage Holding 50-Gal. (Approx. SS models)
S	S	S	S	NA	NA	NA	Water Capacity 27-Gal. (Approx.)
NA	NA	NA	NA	S	S	S	Water Capacity 54-Gal. (Approx.)
NA	NA	NA	NA	NA	NA	S	Water Hose w/Auto. Rewind w/City Water Hook Up
S	S	S	S	S	S	S	Water System Demand w/12V Pump & 5/8" Polybutylene Lines

RUNNING GEAR & CONSTRUCTION

NA	NA	NA	S	S	S	S	Floor 1" Laminated Plywood
S	S	S	NA	NA	NA	NA	Floor Conventional Frame w/5/8" Plywood
O	O	O	S	O	O	S	Hitch for Towing Car w/Wire Connector
O	NA	NA	NA	NA	NA	NA	Insulation 1/4" Fome-Cor Complete Exterior (w/metal only)
NA	NA	NA	S	NA	NA	S	Insulation 1/4" Fome-Cor Exterior Roof
O	O	NA	NA	S	NA	NA	Insulation 1/4" Fome-Cor Floor Ends (w/fiberglass sides)
NA	NA	S	S	NA	S	S	Insulation R-19 Fiberglass in Roof
NA	S	S	S	S	S	S	Insulation Laminated 5/8" Foam in Sidewalls & Ceiling
O	O	NA	NA	O	NA	NA	Insulation Polar Pak (R-7 Sidewalls & Floor, R-10 Roof)
NA	NA	S	S	NA	S	S	Insulation R-7 Fiberglass in Sidewalls
S	S	NA	NA	S	NA	NA	Insulation R-5 Fiberglass in Sidewalls, Roof & Floor
NA	NA	S	S	S	S	S	Jack Hydraulic - 6 Ton
NA	NA	NA	NA	NA	O	S	Jacks Hydraulic Auto. Leveling
NA	NA	NA	O	O	S	NA	Jacks Hydraulic Leveling
NA	NA	NA	NA	S	S	S	Mud Flaps (front & rear)
S	S	S	S	S	S	S	Shock Absorbers
NA	S	S	S	S	S	S	Skid Bars for Rear Bottom Protection
S	S	S	NA	NA	NA	NA	Spare Tire Carrier
O	O	S	NA	NA	NA	NA	Spare Tire Cover Deluxe
NA	NA	NA	S	S	S	S	Spare Tire in Bumper Slide Out Tray (except 27')
S	S	S	S	S	S	S	Spare Tire
NA	S	S	S	S	S	S	Structure Aluminum Sidewalls & Roof
S	S	S	S	NA	NA	NA	Suspension w/Mor Ryde Tag Axle (28')
NA	NA	NA	NA	S	S	S	Suspension w/Mor Ryde Tag Axle (33' & up)
O	O	O	O	O	O	S	Air Adjustable Helper Springs
S	S	S	S	S	S	S	Undercoating
S	S	S	S	S	S	NA	Wheel Covers Decorative Deluxe
NA	NA	NA	NA	O	O	NA	Wheel Simulator Deluxe Stainless ILO Std.
NA	NA	NA	NA	O	O	S	Wheels Polished Aluminum

SAFETY FEATURES

O	O	O	O	O	O	O	Customer Pick Up
NA	NA	O	S	NA	O	S	Fire Extinguisher 10 BC
S	S	S	NA	S	S	NA	Fire Extinguisher 5 BC
O	O	O	S	O	O	S	LP Leak Detector
S	S	S	S	S	S	S	Seat Belts
NA	NA	S	S	NA	NA	S	Seat Belts w/Shoulder Straps (Driver & Pass. Seats)
NA	NA	O	O	NA	O	O	Security System A&E
S	S	S	S	S	S	S	Smoke Detector
O	O	O	O	O	O	O	State Seals

MI	MI	MI	MI	CA	CA	CA	
AS	KS	KA	LA	KS	KA	LA	WINDOWS, DOORS, AWNINGS & VENTS
NA	NA	O	O	NA	O	O	Awning Per Window Matching Side Awning (A&E 9000) (Choose Location)
NA	NA	O	NA	NA	O	NA	Awning Per Window Matching Side Awning (A&E 8500) (Choose Location)
O	O	O	NA	O	O	NA	Awning Side A&E 8500 (up to 21')
NA	O	O	S	O	O	S	Awning Side A&E 9000 (up to 21')
O	O	O	O	O	O	O	Awning Tension Rafter for Side Awning
O	O	O	S	O	O	S	Door Bell
NA	NA	NA	NA	O	S	S	Door Driver Side w/Power Window & Pass. Side Panel
NA	NA	NA	S	S	S	S	Door Entrance Radius w/Screen w/Flush Latch & Dead Bolt Lock
S	S	S	NA	NA	NA	NA	Door Entrance w/Screen w/Flush Latch & Dead Bolt Lock
NA	NA	NA	NA	O	O	O	Door Passenger w/Power Window
NA	NA	NA	S	NA	NA	S	Door Stop Auto. Flush Recessed (one)

MI	MI	MI	MI	CA	CA	CA	
AS	KS	KA	LA	KS	KA	LA	WINDOWS, DOORS, AWNINGS & VENTS - Cont.
S	S	S	NA	S	S	NA	Door Woven Folding (where applic.)
S	S	S	NA	S	S	NA	Grab Handle
NA	NA	NA	S	NA	NA	S	Grab Handle Deluxe w/Light & Inside Switch
O	O	O	S	O	O	S	Skylight in Bathroom w/Soft Shade (21' & up)
O	O	NA	NA	O	NA	NA	Vent in Ceiling 12V ILO Std. w/Wall Switch (Choose Location)
S	S	S	S	S	S	S	Vent in Bath Area w/Wall Switch 12V
O	O	O	O	O	O	O	Vent in Ceiling w/Wall Switch 12V (Choose Location)
O	O	O	O	O	O	O	Vent/Ceiling 12V Fantastic 3-Spd. w/Wall Thermostat & Power Opener (Choose Location)
S	S	NA	NA	S	NA	NA	Vent in Ceiling Non-Power (2 - 4)
NA	NA	NA	NA	O	O	O	Window ILO Bevelled Mirrors in Bedroom (where applic.)
S	S	NA	NA	S	NA	NA	Windows Radius Slider Clamp in Safety Glass
NA	NA	S	NA	NA	S	NA	Windows Slider Clamp in Tinted Safety Glass
NA	NA	NA	S	NA	NA	S	Windows Radius Slider Tinted Safety Glass

LEGEND

FLOORPLANS

RB — Rear Bath
DD — Double Dinette
SB — Side Bath
RBD — Rear Bath/Dinette
WCB — Walk-Thru Center Bath
WCBA — Walk-Thru Center Bath w/Aisle Bed
WCBW — Walk-Thru Center Bath w/Wardrobe
WCBT — Walk-Thru Center Bath w/Twin Bed
RBRD — Rear Bath/Rear Door

SBT — Side Bath/Twin Bed
CB — Center Bath
CBD — Center Bath/Dinette
CBTD — Center Bath/Dinette/Twin Bed
WCBD — Walk-Thru Center Bath/Dinette
SACB — Side Aisle/Center Bath
SACT — Side Aisle/Center Bath/Twin Bed
SA — Side Aisle
SS — Super Storage Model

SPECIFICATIONS

CA — Class A
Dbl. — Double
Ex CAL — Except California
ILO — In Lieu Of
MI — Mini Home
NA — Not Available
O — Option
S — Standard
V — Volt
W/W — White Wall



A&E Systems Inc.



hydro flame



RECREATIONAL VEHICLE PRODUCTS

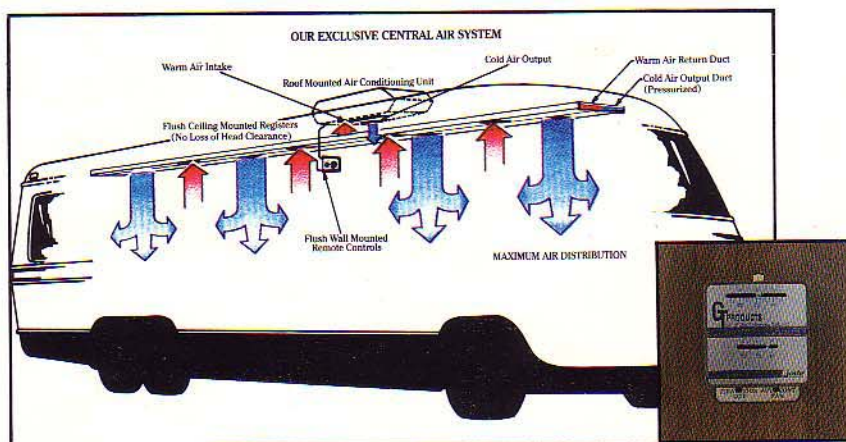


SHARP

Newmar Corporation features appliances and components by these quality names to insure you of years of safe and trouble-free operation and enjoyment.

Newmar Kountry Klub

Don't forget to check out the Klub... the Newmar Kountry Klub that is. All you need to be eligible is to be the proud owner of any one of the fine Newmar products.



Remote Thermostatically Controlled "On/Off"



Awning



Kountry Aire Class A Living/Dining Area

KA-O-65 Almond Cream

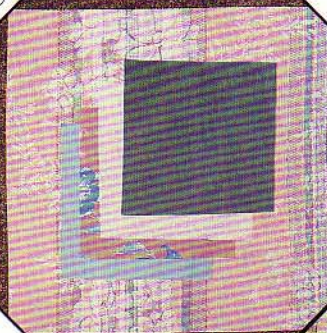


Kountry Aire Mini Home Living/Dining Area

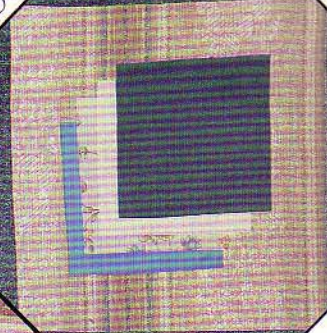
KA-O-67 Silver Cloud



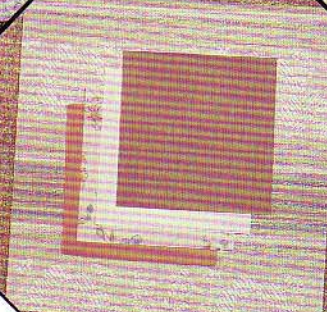
AS-O-71



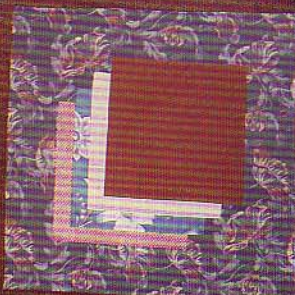
AS-O-73



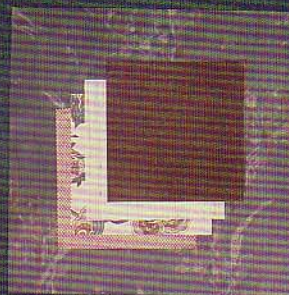
AS-O-72



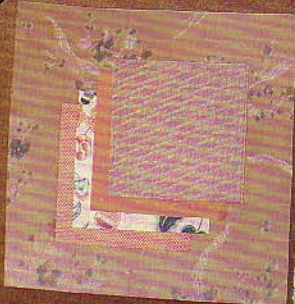
KA-O-64



KA-O-67



KA-O-65



KA-O-66





KS-O-68

KS-O-69



LA-O-62

KS-O-70



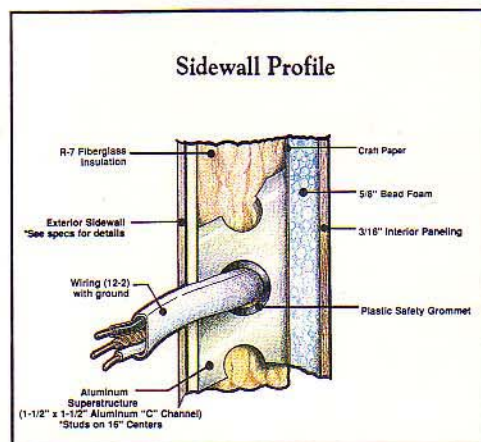
LA-O-61

LA-O-63

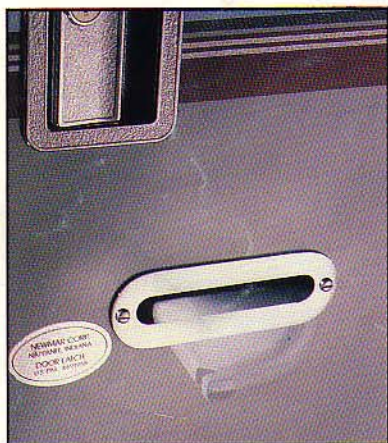




All Aluminum Superstructure



New Power Sofa (Standard in London Aire Class A & Mini Home)



Now you see it . . .
now you don't!

Newmar's own patented door catch automatically swings out to the proper position to catch and secure your entrance door. Just press the release button and it's free to close!



mop/ryde Suspension



Newmar Corporation:
A sound company backed by
22 years of experience.

BY



Technology Surrounded By Tradition!

Newmar Corporation, 355 North Delaware
Nappanee, IN 46550-0030, (219) 773-7791

Scheduled plant tours Monday - Friday

Prices and specs are subject to change without written notice
at Newmar's discretion with no obligation.

Your nearest dealer: