

# KOUNTRY STYLE

A publication of Newmar Corporation

Aires, 1992 Model Year



"The 17-foot slideout in our new 40-foot London Aire is perfect for us, since we are full-time RVers. Obviously, we appreciate the quality; this is our fourth Newmar coach."

Elwood and Ruth Starling  
Lake Park, Georgia







**T**hank you for your interest in the recreational vehicles built by Newmar Corporation. We are quite proud of all the RVs we have built during the last quarter of a century.

We are confident you will be pleased and satisfied if you purchase one of our beautiful new trailers or motorhomes.

Quality, superior workmanship and practical livability are over-used terms today because they are easy to say but difficult to achieve. Newmar, however, has always been widely recognized as a manufacturer that delivers the highest standards in the RV industry.

Through our nationwide network of dealers, we sell RV products that are designed and built for many years of over-the-road use. Please spend a few minutes at one of those dealerships and examine our coaches carefully. We think you will be pleased by what you see.

Also, we invite you to visit our manufacturing facility in Nappanee, Indiana (just off U.S. Route 6 west of town). By taking one of our guided plant tours — offered weekdays at 10 a.m. and 2 p.m. Eastern Standard Time — you can get a firsthand look at how our RVs are built, and you can see for yourself the type of world-class quality that goes into each one of our products.

***Newmar Kountry Klub***

Don't forget to check out the Klub . . . the Newmar Kountry Klub, that is. All you need to be eligible is to be the proud owner of any one of the fine Newmar recreational vehicles.



355 N DELAWARE ST  
P O BOX 30  
NAPPANEE IN 46550-0030  
(219) 773-7791 FAX (219) 773-2895

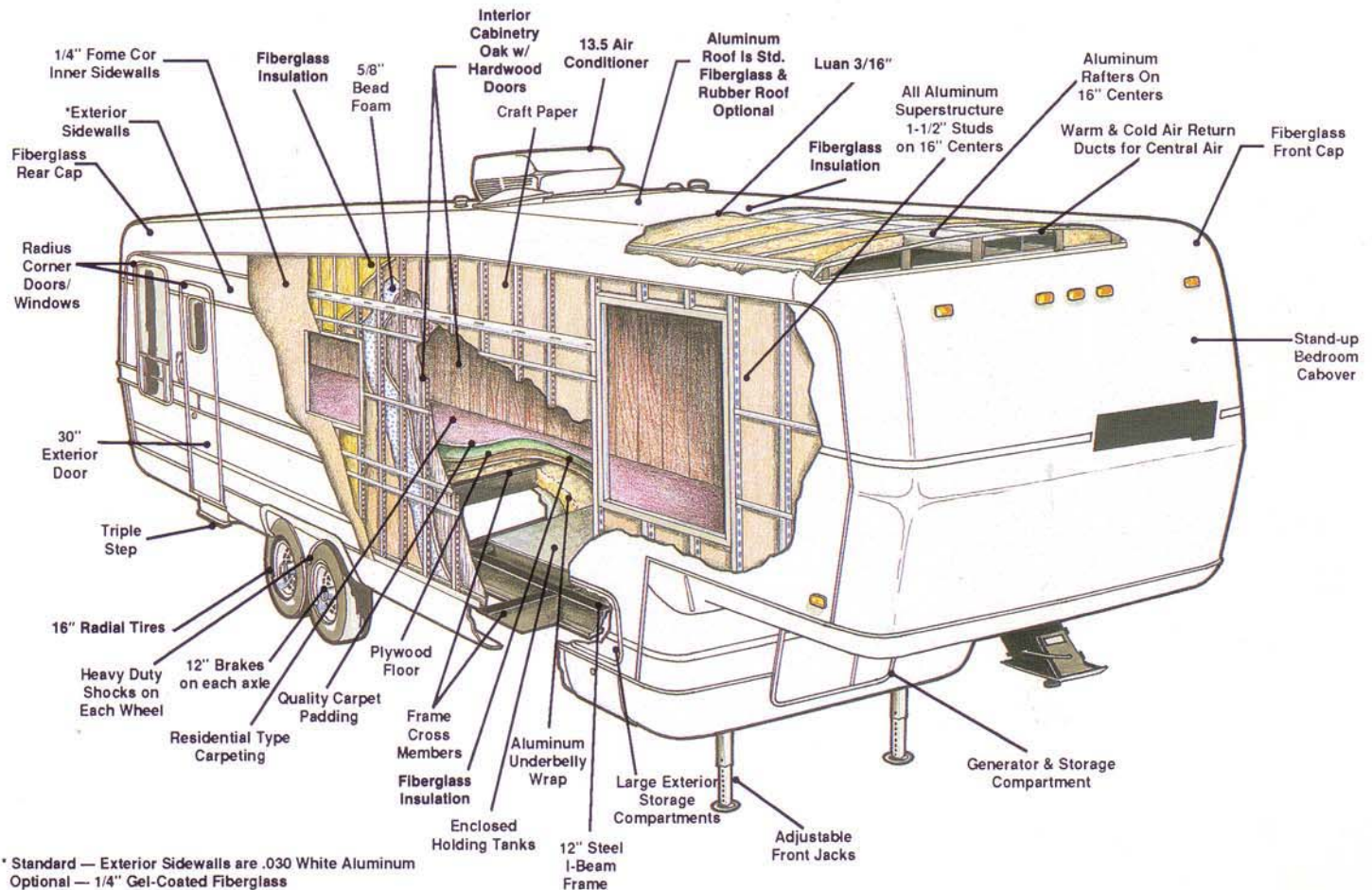
Scheduled plant tours Monday-Friday

Prices and specifications are subject to change at Newmar's discretion without written notice or obligation.



# Kountry Aire and Mountain Aire Design

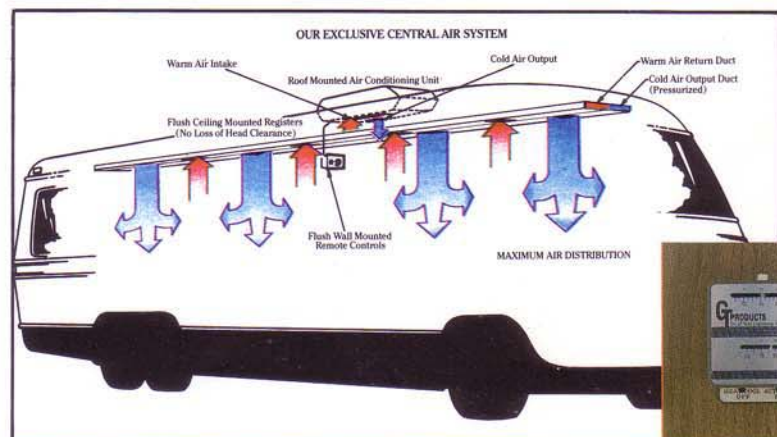
## "5 Year Limited Warranty on Superstructure"



Cutaway section illustrates component assembly of Kountry Aire and Mountain Aire Superstructure which has a 5 Year Limited Warranty. London Aire coaches have a Lifetime Limited Warranty on Superstructure including the innovative 16" I-beam undercarriage. Construction features of London Aire are equal or superior to those of Kountry Aire and Mountain Aire.

### Composite "R" Factors

	KA	MA
Sidewalls	11.6	11.6
Ceiling	24.6	15.6
Floor	26.1	17.1



### REMOTE THERMOSTATICALLY CONTROLLED "ON/OFF"



Quality is #1 at Newmar Corporation, and our "Personal Touch" inspection of all products will ensure you of that high quality before any RV ever leaves our plant!



# FIFTH WHEELS STANDARDS/OPTIONS

MA	KA	LA	RETAIL COST	
O	O	S	55	Exterior Sides Gel-Coated Fiberglass (per ft)
NA	O	S	24	Roof Gel-Coated Fiberglass (per ft)
S	S	NA		Roof Painted Aluminum
O	O	NA	179	Roof Rack & Ladder
NA	NA	S		Roof Rack, Handrails & Molded Recessed Steps In Rear Cap
O	O	NA	138	Roof Rubber
NA	NA	O	3329	Slideout 65" In Rear Bedroom (where applic)
O	O	NA	3077	Slideout 65" In Rear Bedroom (where applic)
O	O	O	3072	Slideout 71" In Cabover (w/mirrored wardrobe & vanity)
O	O	NA	3196	Slideout 91" (choose cabinet & furniture selection)(where applic)
NA	NA	O	3458	Slideout 91" (choose cabinet & furniture selection)(where applic)
S	S	S		Slideout Large w/Freestanding Dinette (see floor plans where applic)
S	S	S		Step Triple Manual
O	O	S	244	Stone Guard Pull Down Vinyl Recessed In Front Fiberglass Cap
O	O	NA	242	Storage Exterior Slideout Drawer 29"
S	S	NA		Storage Exterior Slideout Drawer 48"
O	O	O	310	Storage Roof Pod 10 Cubic Foot
O	O	O	460	Storage Roof Pod 21 Cubic Foot
<b>INTERIOR FEATURES</b>				
NA	NA	S		Bedsread Quilted w/Matching Shams & Accent Pillow
O	O	NA	214	Bedsread Quilted w/Reversed Shams & Accent Pillow (1 dbl or 1 pr twins)
S	S	S		Ceiling Woven Soft Touch
O	O	NA	253	Countertop Ceramic Tile
NA	NA	S		Countertop Corian Kitchen, Fixed Dinette & Bath
S	S	S		Decorative Clock
S	NA	NA		Floor Covering, Carpet w/Deluxe Pad Living Room & Bedroom
NA	S	S		Floor Covering, Carpet w/Deluxe Pad Throughout
O	NA	NA	22	Floor Covering, Carpet w/Pad ILO Vinyl (per ft)(choose location)
NA	NA	O	837	Floor Covering, Ceramic Tile In Bath Area
NA	O	O	437	Floor Covering, Hardwood Parquet In Kitchen Area
O	NA	NA	570	Floor Covering, Hardwood Parquet In Kitchen Area ILO Vinyl
S	NA	NA		Floor Covering, Vinyl In Kitchen & Bath
NA	O	O	41	Floor Covering, Vinyl In Kitchen Area
S	S	S		Sink Covers Two
O	O	O	50	Stemmed Glass Rack w/4 Glasses
NA	S	S		Waste Basket & Convenience Light In Kitchen
NA	S	S		Window Garnish (residential style)
O	NA	NA	297	Window Treatmt Day/Night Soft Shades ILO STD (liv,din & bdrm)
NA	O	NA	228	Window Treatmt Day/Night Soft Shades ILO STD (liv,din & bdrm)
NA	NA	S		Window Treatmt Day/Night Soft Shades,CncBd/Lined Drapes/Traverse Rods
S	S	S		Window Treatmt Mini Blinds (kitchen & bath)
S	S	NA		Window Treatmt Soft Shades, Drapes & Cornice Boards
<b>PLUMBING SYSTEMS</b>				
O	O	O	224	Heat Pads for Holding Tanks 110V
S	S	S		Insulated Holding Tanks
O	O	S	89	Sewage Holding Tank Rinse
S	S	S		Sewage Hose Holder
S	S	S		Tank Gray Water 48 Gallons (approximate)
S	S	S		Tank Sewage Holding 48 Gallons (approximate)
S	S	S		Water Capacity 42 Gallons (approximate)
S	S	S		Water System Demand w/12V Pump & 5/8" Polybutylene Lines
<b>RUNNING GEAR &amp; CONSTRUCTION</b>				
S	S	S		Floor Decking Plywood
S	S	NA		Frame Size 12" I-Beam w/Pull Out Storage & Battery Drawers
NA	O	S	4347	Frame Size 16" I-Beam w/Fiberglass Wrap & Maximum Storage
O	O	O	390	Hitch 15000# Plate & Bracket Center Mount (up to 15000# GVWR)
O	O	O	622	Hitch 21000# Plate & Bracket Center Mount
S	NA	NA		Insulation Fiberglass R7 Sidewalls & Floor, R10 Roof
NA	S	S		Insulation Fiberglass R7 Sidewalls, R19 Floor & Roof
S	S	S		Insulation Foam 5/8" Laminated In Sidewalls & Ceiling
NA	S	S		Insulation Fome-Cor Exterior Roof
S	S	NA		Insulation Fome-Cor Exterior Sidewalls (w/metal sides)
O	O	S	282	Jack 12V Powered
NA	NA	O	282	Jack 12V Powered Independent Motors & Switches
O	O	NA	563	Jack 12V Powered Independent Motors & Switches
O	O	O	157	Jacks Stabilizer (set of 2 extra)
S	S	S		Jacks Stabilizer (set of 2)
O	O	O	599	Jacks Stabilizers 12V Power Twins A & E (set of 2) ILO STD
S	S	S		Rear Bumper Fiberglass w/Slide Out Tray For Spare Tire (where applic)

MA	KA	LA	RETAIL COST
NA	O	O	200
S	S	S	
S	S	S	
O	S	S	41
O	S	S	248
O	O	S	219
S	S	S	
NA	NA	S	
O	O	S	1416
S	S	NA	
O	O	S	789
O	O	S	1176
NA	NA	S	
S	S	NA	
S	S	S	
O	O	O	725
O	O	S	60
NA	O	O	1703
O	O	O	
NA	NA	S	
O	O	NA	144
O	O	O	209
O	O	NA	250
O	O	NA	827
O	O	S	1031
O	O	O	93
S	S	S	
O	O	S	38
O	O	O	41
NA	NA	S	
NA	NA	S	
O	O	S	190
O	O	O	311
S	S	S	
O	O	O	91
NA	O	O	137
NA	O	O	221
O	NA	NA	159
NA	O	O	221
O	NA	NA	221
O	O	O	29
O	O	O	29
S	S	S	
O	NA	NA	648
NA	O	O	573
O	NA	NA	147
NA	O	O	87

## RUNNING GEAR & CONSTRUCTION

Remote Switch (PLCS-1) For Power Twins  
Shock Absorbers  
Skid Bars For Rear Bottom Protection  
Snaps For FW Jacks  
Spare Tire  
Stabilizer For Fifth Wheel Pin (built-in)  
Structure Aluminum Sidewalls & Roof  
Structure Contoured Sidewalls w/Recessed Belt Line  
Structure Wide Body  
Suspension Triple Axle (38 & 40)  
Suspension w/Mor Ryde TA-1 w/Tandem Axle Models  
Suspension w/Mor Ryde TA-1 w/Triple Axle Models (38 & 40)  
Tires Radial 16" w/Polished Aluminum Wheels  
Tires Radial 16" w/White Spoke Wheels  
Underbelly Enclosed Aluminum w/Laminated 5/8" Foam

## SAFETY FEATURES

Customer Pick Up  
LP Leak Detector  
Security System  
State Seal

## WINDOWS, DOORS, AWNINGS & VENTS

Awning Front &/Or Rear Recessed w/12V Switch (where applic)  
Awning Per Window Matching Side Awning (A & E 8500)(choose location)  
Awning Per Window Matching Side Awning (A & E 9000)(choose location)  
Awning Rear Recessed In Fiberglass End Cap (where applic)  
Awning Side A & E 8500  
Awning Side A & E 9000  
Awning Tension Rafter for Side Awning  
Door 30" Entrance w/Dead Bolt (where applic)  
Door Bell  
Door Deletion In Rear Bedroom (where applic)  
Door Stop Auto Flush Recessed (1)  
Grab Handle Deluxe w/Light & Inside Switch  
Skylight In Bathroom w/Soft Shade (where applic)  
Vent 12V Fantastic 3-Spd w/Power Opener (choose location)  
Vent 12V In Bath Area w/Wall Switch  
Vent 12V In Ceiling w/ Wall Switch (choose location)  
Window Picture 36X48 ILO 29X48 At Dinette  
Window Picture 48X48 ILO 29X48 (w/freestanding dinette only)  
Window Picture 48X48 ILO 29X48 (w/freestanding dinette only)  
Window Picture 48X48 ILO STD At Cabover Bedroom  
Window Picture 48X48 ILO STD At Cabover Bedroom  
Window Radius Dark Tinted Glass ILO STD (each)  
Window Radius Safety Glass ILO STD (each)  
Windows Radius Torque  
Windows Safety Glass Storms (except slideout)  
Windows Safety Glass Storms (except slideout)  
Windows Safety Glass Storms (for slideout only)  
Windows Safety Glass Storms (for slideout only)

## LEGEND

**CBD** Center Bath w/Dinette  
**FKD** Front Kitchen w/Dinette  
**FL** Front Lounge  
**RKSA** Rear Kitchen, Side Aisle Bath  
**SA** Side Aisle Bath  
**WD** Walk Through Bath w/Dinette  
**WDSK** Walk Through Bath w/Door Side Kitchen  
**WRKD** Walk Through Bath, Rear Kitchen w/Dinette

**A&E Systems**  
by Dometic

**Dometic**  
Our goal... your satisfaction.

**hydro flame**

**DUO-THERM**  
by Dometic



# FIFTH WHEELS STANDARDS/OPTIONS

MA KA LA RETAIL  
COST

S S NA  
O O NA 905  
NA NA S  
NA NA O 1002  
S S S  
S NA NA  
NA S S  
O NA NA 73  
S S S  
S S NA  
O O NA 41  
NA NA S  
O O S 51

## AIR CONDITIONING, HEATING & LP GAS

Air Conditioner Central Brisk Air 13.5 BTU (1)  
Air Conditioner Central Brisk Air 13.5 BTU (extra)  
Air Conditioner Central Penguin 13.5 BTU (1)  
Air Conditioner Central Penguin 13.5 BTU (extra)  
Furnace 20M Electronic Ignition (35WRKD & 38 & up)  
Furnace 31M Electronic Ignition (35 & up)  
Furnace 35M Electronic Ignition  
Furnace 35M ILO 31M (35 & up)  
Heat In Floor Ducted  
LP Gas Bottles 2-30# Steel w/Auto Regulator  
LP Gas Bottles 2-40# Steel  
LP Gas Bottles 2-40# Steel w/Auto Regulator  
LP See Level Gauges (set of 2)

## APPLIANCES & ACCESSORIES

S S S  
O O O 295  
NA NA S  
NA O NA 469  
S S NA  
NA NA S  
S S NA  
NA NA S  
O O O 732  
O O O 76  
O O NA 397  
NA NA S  
O NA NA 948  
NA O NA 889  
O O NA 799  
S S NA  
S S S  
S S NA  
S NA NA  
NA S NA  
NA O S 503  
NA S NA  
O NA NA 434  
S NA NA  
O O O 479  
O NA NA 865  
NA O O 345  
O NA NA 418  
NA O O 69  
S S S  
NA NA S  
NA S NA  
S NA NA  
O S NA 41  
O NA NA 65  
NA O S 76  
O NA NA 97  
S NA NA  
O NA NA 700  
S NA NA  
O S S 153  
O S S 220  
O O O 0  
O O O 278  
O O O 1179  
O O S 155  
S NA NA  
O NA NA 200  
O NA NA 83  
O NA NA 165  
NA O S 254  
NA S NA  
O O S 50  
O NA NA 80

Bath Accessories Brass (1-towel bar, 1-towel ring, 1-robe hook)  
Blender  
Clothes Line (retractable)  
Faucet For Kitchen & Bath Deluxe Single Handle ILO STD  
Faucet For Kitchen Sink Single Handle  
Faucet For Kitchen Sink Single Handle Deluxe Hi Rise (chrome)  
Faucet For Shower & Lavatory Double Handle Deluxe (brass)  
Faucet For Shower & Lavatory Single Handle (gold)  
Ice maker (110V) (where applic)  
Ironing Board (where applic)  
Microwave Oven (Sharp 22")  
Microwave Oven Convection 30" (Sharp) w/4 Burner Hot Plate  
Microwave Oven Convection 30" (Sharp) w/4 Burner Hot Plate (where applic)  
Microwave Oven Convection 30" (Sharp) w/4 Burner Hot Plate ILO STD  
Microwave Oven Non Convection 30" (Sharp)  
Microwave Prep (for 22" X 15")  
Range Cover Bi-Fold  
Range Hood w/Light & Fan  
Range Magic Chef 4-Burner w/Oven 18" Porcelain, Blk Glass Door w/Pilot  
Range Magic Chef 4-Burner w/Oven 22" Porcelain, Blk Glass Door w/Pilot  
Refrigerator Dometic Double Door 3804 AES  
Refrigerator Norcold Double Door 683 3-Way  
Refrigerator Norcold Double Door 683 3-Way ILO STD (where applic)  
Refrigerator Norcold Single Door 6052 2-Way  
Safe  
Shower Corner w/Full View Clear Glass Door (where applic)  
Shower Corner w/Full View Clear Glass Door ILO Corner Tub  
Shower Stall 36" Fiberglass w/Remainder WRB ILO 54" Tub (where applic)  
Shower Stall 36" ILO Corner Tub  
Sink Kitchen Double Porcelain  
Sink Lavatory Corian  
Sink Lavatory Porcelain  
Stool Aqua Magic IV  
Stool Aqua Magic Starlite  
Stool Aqua Magic Starlite w/Spray Attachment  
Stool China w/Spray Attachment  
Tub 40" ABS w/Remainder Wardrobe ILO 54" Tub (where applic)  
Tub ABS w/Curtain  
Tub Corner w/Enclosure ILO STD (where applic)  
Tub Surround  
Tub/Shower Enclosure  
Tub/Shower Fiberglass  
Unenclosed Stool Area (where applic)  
Washer/Dryer Prep w/Plumbing, Receipt & Shelf (certain models)  
Washer/Dryer Two Piece (Sears)(certain models)  
Water Filtering System w/Drink Dispenser (kitchen)  
Water Heater 6 Gal Gas  
Water Heater 6 Gal Gas w/Electronic Ignition  
Water Heater 6 Gal Gas /Electric  
Water Heater 10 Gal Gas /Electric (where applic)(31 & up)  
Water Heater 10 Gal Gas /Electric w/DSI  
Water Heater 10 Gal Gas /Electric w/Reignitor  
Water Heater Bypass Kit  
Water Heater Reignitor 12V

## CABINETS & FURNITURE

NA O S 545  
O O S 60  
O O O 125  
NA NA O 334  
O O NA 159  
O NA NA 379

Air Mattress For Queen Or Twin Beds (1 pr)  
Bed Queen (60" X 75")(where applic)  
Bed Queen (60" X 80")(available only w/bedroom slideout)  
Bed Twin (32" X 75")ILO Double (where applic)  
Bed Twin (32" X 75")ILO Double (where applic)  
Bunks Cabinet w/Foam Mat, 8X14 Window Above Each  
Twin Bed (where applic)

MA KA LA RETAIL  
COST

O NA NA 480  
O NA NA 335  
NA O O 499  
NA O NA 1587  
NA NA O 0  
NA O S 2402  
NA O NA 1104  
S S NA  
NA NA O 0  
O O NA 358  
O O S 537  
NA NA O 537  
O O NA 44  
O O O 269  
S S S  
O O S 65  
O O S 180  
NA O O 435  
O NA NA 342  
O O O 79  
NA S S  
S S S  
O S S 173  
O NA NA 90  
NA O O 0  
O O O 136  
O O O 325  
O O O 84  
S S NA  
O O NA 338  
NA NA S  
NA O O 1118

S S NA  
NA NA S

O O NA 124  
O O O 139  
S S S  
S NA NA  
O S S 219  
O NA NA 159  
O O S 86  
O O O 4361

O O O 296  
O O O 689  
O O O 400  
NA O O 124  
O O O 39  
NA S S  
O NA NA 406  
NA S S  
S S S  
NA NA S

NA O O 21  
S S S  
S S NA  
NA NA S

S NA NA  
O S S 193  
S S S  
O O O 407  
O O S 400  
O O S 43  
O O O 53  
O O O 4216  
O O S 58  
O O S 63  
NA NA S

O O O 44  
O O S 512  
O O NA 83

S S S  
S S S

## CABINETS & FURNITURE

Bunks Fixed w/Foam Mat, 15X48 Window Above Each  
Twin Bed (where applic)  
Cabinet Mini Hutch w/Lights & Mirror (where applic w/slideout)  
Cabinet Mini Hutch w/Lights & Mirror (where applic w/slideout)  
Cabinetry Bleached Oak Hardwood w/Raised Panel Doors  
Cabinetry Bleached Oak Hardwood w/Raised Panel Doors ILO STD  
Cabinetry Cherry Hardwood w/Raised Panel Doors  
Cabinetry Oak Hardwood w/Raised Panel Doors  
Cabinetry Oak w/Raised Panel Doors  
Cabinetry Walnut Hardwood w/Raised Panel Doors ILO STD  
Chair Swivel Rocker  
Chair Swivel Rocker Recliner w/Foot Rest  
Chair Swivel Rocker Recliner w/Foot Rest (additional)  
Countertop Extension (where applic)  
Deluxe Honeymoon Suite Bedroom  
Dinette Built In ILO STD  
Dinette w/Inner Spring Cushions (see floorplan)  
Drawer Below Fixed Dinette Seat (each)  
Drawers Wood w/Metal Guides & Side Rollers  
Entertainment Center Base Cabinet (where applic)  
Entertainment Center Base Cabinet (where applic)  
Hardwood Door Trim (each)  
Lazy Susan (where applic)  
Lifts For Convenient Storage Under Fixed Beds (each)  
Pull Out Pantry (where applic)  
Rear Pantry ILO STD (where applic)  
Rear Pantry ILO STD (where applic)  
Sofa 75" w/End Tables ILO 84" Sofa (where applic)  
Table Drop Leaf High-Low Hardwood (where applic)  
Table Drop Leaf w/2 Hardwood Chairs ILO STD (where applic)  
Table Sofa Side (where applic w/slideout)  
Tables Cocktail & Chair Side (where applic w/slideout)  
Tables Cocktail, Chair & Sofa (where applic w/slideout)  
Vanity Center In Cabover Bedroom (where applic w/slideout)

## ELECTRICAL & LIGHTING EQUIPMENT

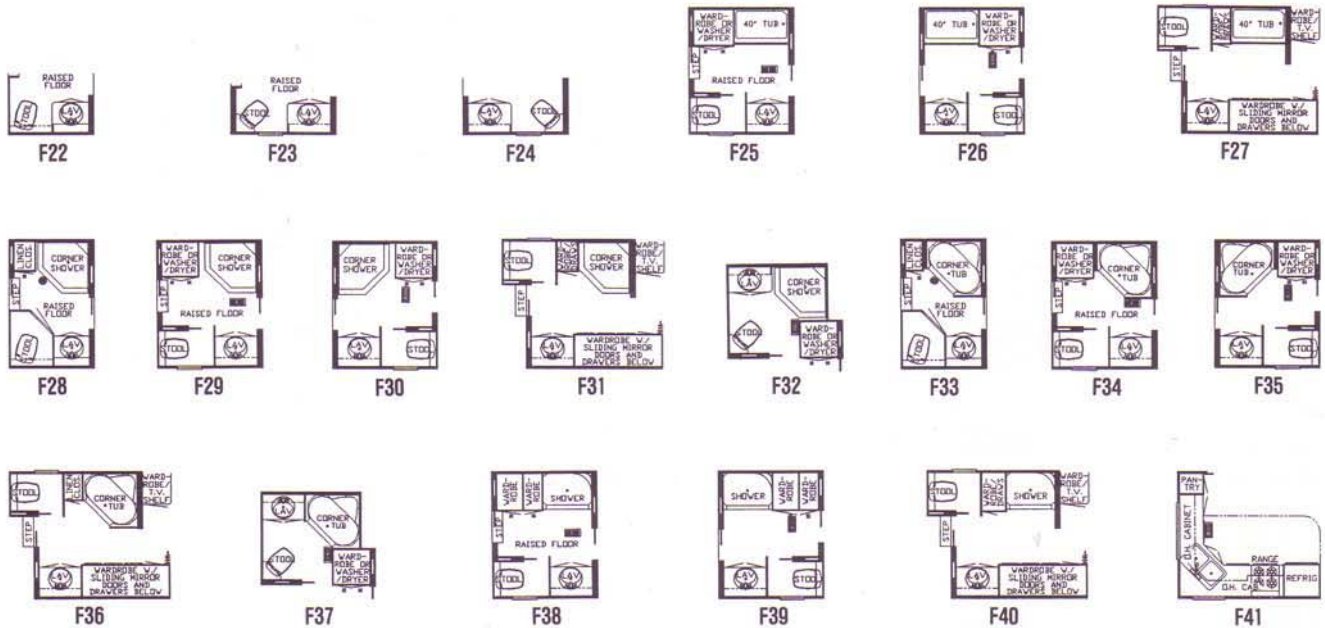
Battery 115 AMP Sears DieHard Deep Cycle  
Battery 115 AMP Sears DieHard Deep Cycle (2)  
Battery 115 AMP Sears DieHard Deep Cycle Extra  
Ceiling Fan (where applic)  
Converter 40 AMP w/Charger  
Electrical Service 30 AMP  
Electrical Service 50 AMP  
Electrical Service Prep for 50 Amp  
Flexible Cord For 50 Amp Service  
Gen 6.5 KW Onan w/1 Remote Switch, Gas Tank, Auto Changeover & Battery  
Gen Gasoline Tank  
Gen LP Conversion  
Gen Prep (auto changeover, 12V cable, remote start wire & door)  
Intercom System  
Light Exterior Security (each)(choose location)  
Lighting Fluorescent Recessed In Ceiling  
Lighting Fluorescent Recessed In Ceiling ILO STD  
Lights In Wardrobe w/Automatic Switches  
Lights Interior Courtesy  
Monitor Panel  
Plug & Bracket For Tow Vehicle  
Receipt 110V (extra)(choose location)  
Receipt 110V GFI (interior & exterior)  
Stereo AM/FM Cassette w/Clock  
Stereo AM/FM Cassette w/Clock & Graphic Equalizer w/Deluxe Speakers  
TV Antenna Prep (wire, shelf & 2 jacks)  
TV Antenna w/Power Booster & 2 Jacks  
TV Cable Hookup  
TV Color 9" AC/DC w/Remote Control  
TV Color 13" AC w/Remote Control  
TV Jack Exterior On Door Side  
TV Jack w/Splitter (extra)(choose location)  
TV Satellite Dish 6" w/Decoder (where applic)  
TV Swivel Base At Corner Entertainment Center (where applic)  
TV Video Switch  
Telephone Hookup w/1 Jack  
Telephone Jack Interior (each)(choose location)  
VCR  
VCR Prep (where applic)

## EXTERIOR FEATURES

Bumper Molded Fiberglass  
Exterior Front & Rear Gel-Coated Fiberglass End Caps



# FIFTH WHEELS



## Fifth-Wheel Specifications - 1992

### MOUNTAIN AIRE

MODEL	FACTORY WEIGHT	GVWR	AXLE WEIGHT	HITCH WEIGHT	TIRES	WHEELS	HEIGHT W/AC	LENGTH	WIDTH	OPTIONS
31 WDSK	9,800	11,500	8,200	1,600	RADIAL 235/85 R16 D	16 X 6	11' - 11"	31' - 6"	96"	F10, 11, 14, 19, 20
31 WRKD	9,800	11,500	8,200	1,600	RADIAL 235/85 R16 D	16 X 6	11' - 11"	31' - 6"	96"	F10, 11, 14, 19, 20
33 FL	8,600	11,500	7,200	1,400	RADIAL 235/85 R16 D	16 X 6	12' - 2"	33' - 11"	96"	F01, 06, 08, 12, 15, 18
33 WDSK	10,200	12,000	8,450	1,750	RADIAL 235/85 R16 D	16 X 6	11' - 11"	33' - 11"	96"	F10, 11, 14, 19, 20, 22, 28, 33
33 WRKD	10,200	12,000	8,450	1,750	RADIAL 235/85 R16 D	16 X 6	11' - 11"	33' - 11"	96"	F10, 11, 14, 19, 20, 41
35 WRKD	10,800	13,750	8,800	2,000	RADIAL 235/85 R16 E	16 X 6	11' - 11"	36' - 11"	96"	F02, 10, 11, 14, 19, 20, 23, 25, 29, 34, 38, 41
35 WDSK	10,800	13,750	8,800	2,000	RADIAL 235/85 R16 E	16 X 6	11' - 11"	36' - 11"	96"	F10, 11, 14, 19, 20, 23, 25, 29, 34, 38
37 FL	9,300	13,000	7,800	1,500	RADIAL 235/85 R16 E	16 X 6	12' - 2"	37' - 11"	96"	F01, 04, 06, 07, 13, 24, 26, 30, 35, 39
38 WD	9,400	14,900	7,900	1,500	RADIAL 235/85 R16 D	16 X 6	11' - 11"	39' - 0"	96"	F01, 03, 05, 06, 10, 11, 14, 19, 20, 23, 25, 29, 34, 38
38 WDSK	11,200	14,900	9,200	2,000	RADIAL 235/85 R16 D	16 X 6	11' - 11"	39' - 0"	96"	F10, 11, 14, 19, 20, 23, 25, 29, 34, 38
40 WRKD	11,400	14,900	9,400	2,000	RADIAL 235/85 R16 D	16 X 6	11' - 11"	40' - 3"	96"	F02, 10, 11, 16, 19, 20, 27, 31, 36, 40, 41
40 RKSA	11,400	14,900	9,400	2,000	RADIAL 235/85 R16 D	16 X 6	11' - 11"	40' - 3"	96"	F10, 17, 32, 37, 41

### KOUNTRY AIRE

MODEL	FACTORY WEIGHT	GVWR	AXLE WEIGHT	HITCH WEIGHT	TIRES	WHEELS	HEIGHT W/AC	LENGTH	WIDTH	OPTIONS
31 WDSK	10,800	12,000	9,200	1,600	RADIAL 235/85 R16 D	16 X 6	11' - 11"	31' - 6"	96"	F10, 11, 14, 19, 20
31 WRKD	10,800	12,000	9,200	1,600	RADIAL 235/85 R16 D	16 X 6	11' - 11"	31' - 6"	96"	F10, 11, 14, 19, 20
33 FL	10,100	11,800	8,700	1,400	RADIAL 235/85 R16 D	16 X 6	11' - 11"	33' - 11"	96"	F01, 06, 08, 12, 15, 18
33 WDSK	11,400	12,000	9,650	1,750	RADIAL 235/85 R16 D	16 X 6	11' - 11"	33' - 11"	96"	F10, 11, 14, 19, 20, 22, 28
33 WRKD	11,400	12,000	9,650	1,750	RADIAL 235/85 R16 D	16 X 6	11' - 11"	33' - 11"	96"	F10, 11, 14, 19, 20, 41
35 WRKD	12,300	13,750	10,300	2,000	RADIAL 235/85 R16 E	16 X 6	11' - 11"	36' - 11"	96"	F02, 10, 11, 14, 19, 20, 23, 25, 29, 38, 41
35 WDSK	12,300	13,750	10,300	2,000	RADIAL 235/85 R16 E	16 X 6	11' - 11"	36' - 11"	96"	F10, 11, 14, 19, 20, 23, 25, 29, 38
37 FL	11,400	13,000	9,900	1,500	RADIAL 235/85 R16 E	16 X 6	11' - 11"	37' - 11"	96"	F01, 04, 06, 07, 13, 24, 26, 30, 39
38 WD	11,400	14,900	9,900	1,500	RADIAL 235/85 R16 D	16 X 6	11' - 11"	39' - 0"	96"	F01, 03, 05, 06, 10, 11, 14, 19, 20, 23, 25, 29, 38
38 WDSK	12,800	14,900	10,800	2,000	RADIAL 235/85 R16 D	16 X 6	11' - 11"	39' - 0"	96"	F10, 11, 14, 19, 20, 23, 25, 29, 38
40 WRKD	13,100	14,900	11,100	2,000	RADIAL 235/85 R16 D	16 X 6	11' - 11"	40' - 3"	96"	F02, 10, 11, 16, 19, 20, 27, 31, 40, 41
40 RKSA	13,100	14,900	11,100	2,000	RADIAL 235/85 R16 D	16 X 6	11' - 11"	40' - 3"	96"	F10, 17, 21, 32, 41

### LONDON AIRE

MODEL	FACTORY WEIGHT	GVWR	AXLE WEIGHT	HITCH WEIGHT	TIRES	WHEELS	HEIGHT W/AC	LENGTH	WIDTH	OPTIONS
33 FL	11,400	12,000	9,800	1,600	RADIAL 235/85 R16 D	16 X 6	12' - 2"	33' - 11"	101"	F01, 06, 08, 12, 15, 18
33 WDSK	12,900	14,000	10,900	2,000	RADIAL 235/85 R16 D	16 X 6	11' - 11"	33' - 11"	101"	F10, 11, 14, 19, 20, 22, 28, 33
33 WRKD	12,900	14,000	10,900	2,000	RADIAL 235/85 R16 D	16 X 6	11' - 11"	33' - 11"	101"	F10, 11, 14, 19, 20, 41
35 WRKD	13,800	14,250	11,550	2,250	RADIAL 235/85 R16 E	16 X 6	11' - 11"	36' - 11"	101"	F02, 10, 11, 14, 19, 20, 23, 25, 29, 38, 41
35 WDSK	13,800	14,250	11,550	2,250	RADIAL 235/85 R16 E	16 X 6	11' - 11"	36' - 11"	101"	F10, 11, 14, 19, 20, 23, 25, 29, 38
37 FL	12,800	14,250	10,800	2,000	RADIAL 235/85 R16 E	16 X 6	12' - 2"	37' - 11"	101"	F01, 04, 06, 07, 13, 24, 26, 30, 39
38 WD	12,900	17,850	10,900	2,000	RADIAL 235/85 R16 D	16 X 6	11' - 11"	39' - 0"	101"	F01, 03, 05, 06, 10, 11, 14, 19, 20, 23, 25, 29, 38
38 WDSK	14,400	17,850	12,150	2,250	RADIAL 235/85 R16 D	16 X 6	11' - 11"	39' - 0"	101"	F10, 11, 14, 19, 20, 23, 25, 29, 38
40 WRKD	14,800	17,850	12,550	2,250	RADIAL 235/85 R16 D	16 X 6	11' - 11"	40' - 3"	101"	F02, 10, 11, 16, 19, 20, 27, 31, 40, 41
40 RKSA	14,800	17,850	12,550	2,250	RADIAL 235/85 R16 D	16 X 6	11' - 11"	40' - 3"	101"	F10, 17, 21, 32, 41



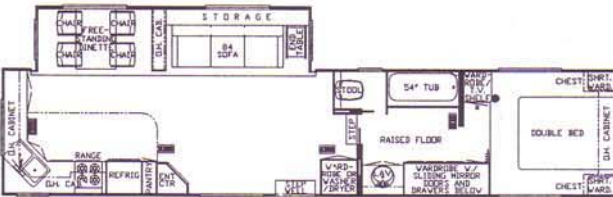
# FIFTH WHEELS



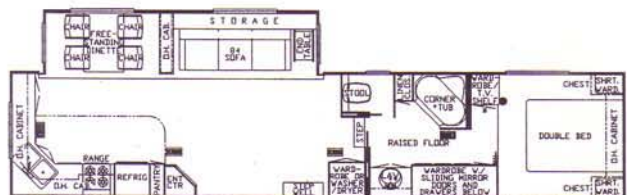
MA 38' WDSK F10, 11, 14, 19, 20, 23, 25, 29, 34, 38



KA/LA 38' WDSK F10, 11, 14, 19, 20, 23, 25, 29, 38



MA 40' WRKD F02, 10, 11, 16, 19, 20, 27, 31, 36, 40, 41



KA/LA 40' WRKD F02, 10, 11, 16, 19, 20, 27, 31, 40, 41



MA 40' RKSA F10, 17, 21, 32, 37, 41



KA/LA 40' RKSA F10, 17, 21, 32, 41



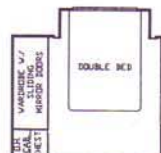
F01



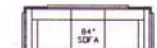
F02



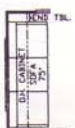
F03



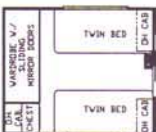
F04



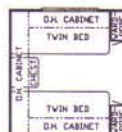
F05



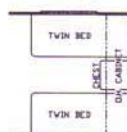
F06



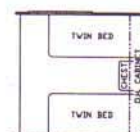
F07



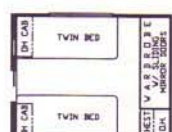
F08



F09



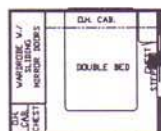
F10



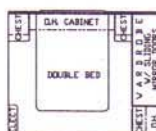
F11



F12



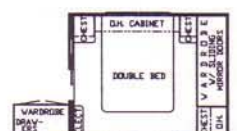
F13



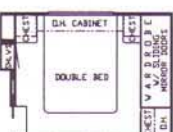
F14



F15



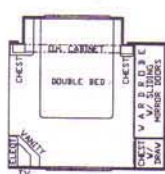
F16



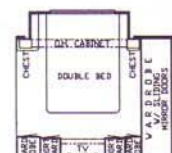
F17



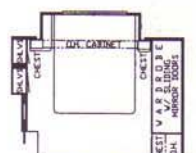
F18



F19



F20

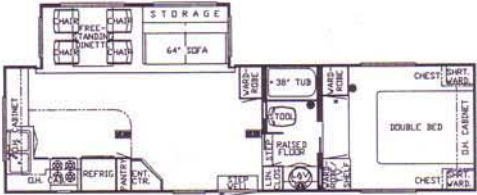


F21

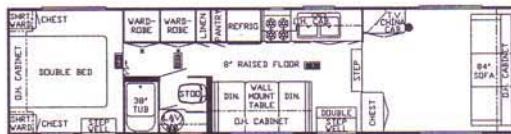
# FIFTH WHEELS



MA/KA 31' WDSK F10, 11, 14, 19, 20



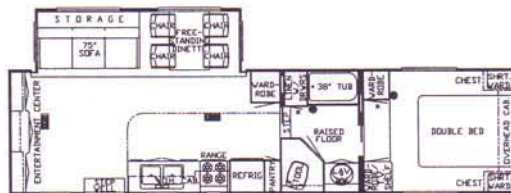
MA/KA 31' WRKD F10, 11, 14, 19, 20



MA/KA/LA 33' FL F01, 06, 08, 12, 15, 18



MA/KA/LA 33' WRKD F10, 11, 14, 19, 20, 41



MA 33' WDSK F10, 11, 14, 19, 20, 22, 28, 33



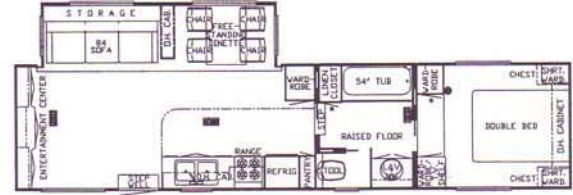
KA/LA 33' WDSK F10, 11, 14, 19, 20, 22, 28



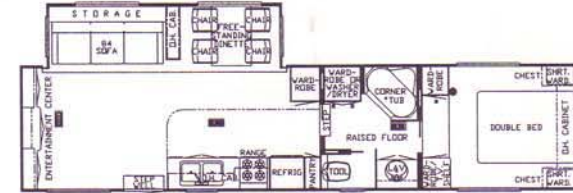
MA 35' WRKD F02, 10, 11, 14, 19, 20, 23, 25, 29, 34, 38, 41



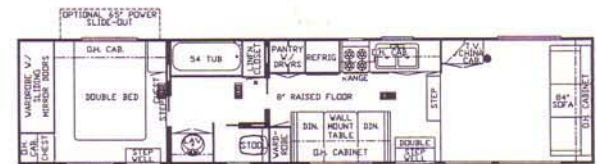
KA/LA 35' WRKD F02, 10, 11, 14, 19, 20, 23, 25, 29, 38, 41



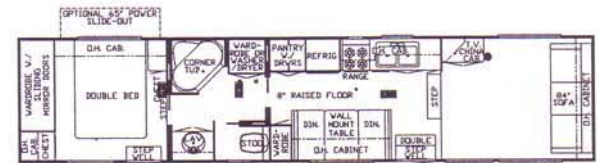
MA 35' WDSK F10, 11, 14, 19, 20, 23, 25, 29, 34, 38



KA/LA 35' WDSK F10, 11, 14, 19, 20, 23, 25, 29, 38



MA 37' FL F01, 04, 06, 07, 13, 24, 26, 30, 35, 39



KA/LA 37' FL F01, 04, 06, 07, 13, 24, 26, 30, 39



MA 38' WD F01, 03, 05, 06, 10, 11, 14, 19, 20, 23, 25, 29, 34, 38



KA/LA 38' WD F01, 03, 05, 06, 10, 11, 14, 19, 20, 23, 25, 29, 38



# TRAVEL TRAILER STANDARDS/OPTIONS

MA KA	RETAIL COST	CABINETS & FURNITURE	MA KA	RETAIL COST	INTERIOR FEATURES
O NA	342	Entertainment Center Base Cabinet (where applic)	NA O	228	Window Treatmt Day/Night Soft Shades ILO STD (liv,din & bdrm)
O O	79	Hardwood Door Trim (each)	S S		Window Treatmt Mini Blinds (kitchen & bath)
NA S		Lazy Susan (where applic)	S S		Window Treatmt Soft Shades, Drapes & Cornice Boards
S S		Lifts For Convenient Storage Under Fixed Beds (each)			<b>PLUMBING SYSTEMS</b>
O S	173	Pull Out Pantry (where applic)	O O	224	Heat Pads for Holding Tanks 110V
O O	136	Sofa 75" w/End Tables ILO 84" Sofa (where applic)	S S		Insulated Holding Tanks
O O	325	Table Drop Leaf High-Low Hardwood (where applic)	O O	89	Sewage Holding Tank Rinse
O O	84	Table Drop Leaf w/2 Hardwood Chairs ILO STD (where applic)	S S		Sewage Hose Holder
O O	338	Tables Cocktail & Chair Side (where applic w/slideout)	S S		Tank Gray Water 48 Gallons (approximate)
		<b>ELECTRICAL &amp; LIGHTING EQUIPMENT</b>	S S		Tank Sewage Holding 48 Gallons (approximate)
S S		Battery 115 AMP Sears DieHard Deep Cycle	S S		Water Capacity 42 Gallons (approximate)
O O	124	Battery 115 AMP Sears DieHard Deep Cycle Extra	S S		Water System Demand w/12V Pump & 5/8" Polybutylene Lines
S S		Converter 40 AMP w/Charger			<b>RUNNING GEAR &amp; CONSTRUCTION</b>
S NA		Electrical Service 30 AMP	S S		Floor Decking Plywood
O S	219	Electrical Service 50 AMP	S S		Frame Size 12" I-Beam w/Pull Out Storage & Battery Drawers
O NA	159	Electrical Service Prep for 50 Amp	NA O	4347	Frame Size 16" I-Beam w/Fiberglass Wrap & Maximum Storage
O O	86	Flexible Cord For 50 Amp Service	S NA		Insulation Fiberglass R7 Sidewalls & Floor, R10 Roof
O O	39	Light Exterior Security (each)(choose location)	S S		Insulation Fiberglass R7 Sidewalls, R19 Floor & Roof
NA S		Lighting Fluorescent Recessed In Ceiling	S S		Insulation Foam 5/8" Laminated In Sidewalls & Ceiling
O NA	406	Lighting Fluorescent Recessed In Ceiling ILO STD	NA S		Insulation Fome-Cor Exterior Roof
NA S		Lights In Wardrobe w/Automatic Switches	S S		Insulation Fome-Cor Exterior Sidewalls (w/metal sides)
NA S		Lights Interior Courtesy	O O	282	Jack 12V Powered
S S		Monitor Panel	S S	599	Jacks Stabilizer (set of 4)
O O	21	Recept 110V (extra)(choose location)	O O		Jacks Stabilizers 12V Power Twins A & E (set of 2) ILO STD
S S		Recept 110V GFI (interior & exterior)	S S		Rear Bumper Fiberglass w/Slide Out Tray For Spare Tire (where applic)
S S		Stereo AM/FM Cassette w/Clock	O O		Shock Absorbers
S NA		TV Antenna Prep (wire, shelf & 2 jacks)	O O	248	Skid Bars For Rear Bottom Protection
O S	193	TV Antenna w/Power Booster & 2 Jacks	O S		Spare Tire
S S		TV Cable Hookup	S S		Structure Aluminum Sidewalls & Roof
O O	400	TV Color 13" AC w/Remote Control	NA S		Suspension Triple Axle (35 & 36)
O O	43	TV Jack Exterior On Door Side	O O	789	Suspension w/Mor Ryde TA-1 w/Tandem Axle Models
O O	53	TV Jack w/Splitter (extra)(choose location)	O O	1176	Suspension w/Mor Ryde TA-1 w/Tripole Axle (35 & 36)
O O	4216	TV Satellite Dish 6' w/Decoder (where applic)	S S		Tires Radial 16" w/White Spoke Wheels
O O	58	TV Swivel Base At Corner Entertainment Center (where applic)	S S		Underbelly Enclosed Aluminum w/Laminated 5/8" Foam
O O	63	TV Video Switch			<b>SAFETY FEATURES</b>
O O	44	Telephone Jack Interior (each)(choose location)	O O	725	Customer Pick Up
O O	512	VCR	O O	60	LP Leak Detector
O O	83	VCR Prep (where applic)	S S		Safety Chains
		<b>EXTERIOR FEATURES</b>	NA O	1703	Security System
S S		Bumper Molded Fiberglass	O O		State Seal
S S		Exterior Front & Rear Gel-Coated Fiberglass End Caps			<b>WINDOWS, DOORS, AWNINGS &amp; VENTS</b>
O O	55	Exterior Sides Gel-Coated Fiberglass (per ft)	O O	144	Awning Front Recessed In Fiberglass End Cap
O O	24	Roof Gel-Coated Fiberglass (per ft)	O O	209	Awning Per Window Matching Side Awning (A & E 8500)(choose location)
S S		Roof Painted Aluminum	O O	250	Awning Per Window Matching Side Awning (A & E 9000)(choose location)
O O	179	Roof Rack & Ladder	O O	827	Awning Rear Recessed In Fiberglass End Cap (where applic)
O O	138	Roof Rubber	O O	1031	Awning Side A & E 8500
O O	6107	Slideout 12'-13' (choose cabinet & furniture selection) (where applic)	O O	93	Awning Side A & E 9000
O O	3077	Slideout 77" (choose cabinet & furniture selection) (where applic)	S S		Awning Tension Rafter for Side Awning
S S		Step Double Manual	O O	38	Door 30" Entrance w/Dead Bolt (where applic)
O O	242	Storage Exterior Slideout Drawer 29"	O O	41	Door Bell
S S		Storage Exterior Slideout Drawer 48"	O O	190	Door Deletion In Rear Bedroom (where applic)
O O	310	Storage Roof Pod 10 Cubic Foot	O O	311	Skylight In Bathroom w/Soft Shade (where applic)
O O	460	Storage Roof Pod 21 Cubic Foot	O O		Vent 12V Fantastic 3-Spd w/Power Opener (choose location)
		<b>INTERIOR FEATURES</b>	S S		Vent 12V In Bath Area w/Wall Switch
O O	214	Bedsread Quilted w/Reversed Shams & Accent Pillow (1 dbl or 1 pr twins)	O O	91	Vent 12V In Ceiling w/ Wall Switch (choose location)
S S		Ceiling Woven Soft Touch	NA O	137	Window Picture 36X48 ILO 29X48 At Dinette
O O	253	Countertop Ceramic Tile	NA O	221	Window Picture 48X48 ILO 29X48 (W/freestanding dinette only)
S S		Decorative Clock	O NA	159	Window Picture 48X48 ILO 29X48 (w/freestanding dinette only)
S NA		Floor Covering, Carpet w/Deluxe Pad Living Room & Bedroom	O O	29	Window Radius Dark Tinted Glass ILO STD (each)
NA S		Floor Covering, Carpet w/Deluxe Pad Throughout	O O	29	Window Radius Safety Glass ILO STD (each)
NA O	437	Floor Covering, Hardwood Parquet In Kitchen Area	S S		Windows Radius Torque
O NA	570	Floor Covering, Hardwood Parquet In Kitchen Area ILO Vinyl	O NA	648	Windows Safety Glass Storms (except slideout)
S NA		Floor Covering, Vinyl In Kitchen & Bath	NA O	573	Windows Safety Glass Storms (except slideout)
O O	41	Floor Covering, Vinyl In Kitchen Area	O NA	147	Windows Safety Glass Storms (for slideout only)
S S		Sink Covers Two	NA O	87	Windows Safety Glass Storms (for slideout only)
O O	50	Stemmed Glass Rack w/4 Glasses			
NA S		Waste Basket & Convenience Light In Kitchen			
NA S		Window Garnish (residential style)			
O NA	297	Window Treatmt Day/Night Soft Shades ILO STD (liv,din & bdrm)			



# TRAVEL TRAILERS



T16



T18



T19

## Travel Trailer Specifications - 1992

MOUNTAIN AIRE										
MODEL	FACTORY WEIGHT	GVWR	AXLE WEIGHT	HITCH WEIGHT	TIRES	WHEELS	HEIGHT W/AC	LENGTH	WIDTH	OPTIONS
28 CBD	6,800	11,000	6,100	700	RADIAL 235/85 R16 D	16 X 6	11' - 1"	28' - 10"	96"	T01, 06, 07A1, 10, 13B, 16, 19
31 CBD	7,000	11,000	6,250	750	RADIAL 235/85 R16 D	16 X 6	11' - 1"	31' - 10"	96"	T06, 07A1, 08, 12, 15, 18
31 FKD	7,000	11,000	6,250	750	RADIAL 235/85 R16 D	16 X 6	11' - 1"	31' - 10"	96"	T01, 07B1, 08, 12, 15, 18
33 FKD	7,500	11,000	6,700	800	RADIAL 235/85 R16 D	16 X 6	11' - 1"	33' - 10"	96"	T01, 07B1, 08, 12, 15, 18
35 CBD	8,000	12,500	7,150	850	RADIAL 235/85 R16 D	16 X 6	11' - 1"	35' - 10"	96"	T01, 03, 04, 05A, 06, 07B1, 08, 12, 15, 18
35 FKD	8,000	12,500	7,150	850	RADIAL 235/85 R16 D	16 X 6	11' - 1"	35' - 10"	96"	T01, 02, 05A, 07B1, 08, 12, 15, 18
36 SA	8,000	12,500	7,150	850	RADIAL 235/85 R16 D	16 X 6	11' - 1"	36' - 10"	96"	T01, 03, 05A, 06, 11, 14
KOUNTRY AIRE										
MODEL	FACTORY WEIGHT	GVWR	AXLE WEIGHT	HITCH WEIGHT	TIRES	WHEELS	HEIGHT W/AC	LENGTH	WIDTH	OPTIONS
31 CBD	7,500	11,000	6,750	750	RADIAL 235/85 R16 D	16 X 6	11' - 1"	31' - 10"	96"	T07A2, 08, 12, 15, 18
31 FKD	7,000	11,000	6,750	750	RADIAL 235/85 R16 D	16 X 6	11' - 1"	31' - 10"	96"	T01, 07B2, 08, 12, 15, 18
33 FKD	8,000	11,000	7,200	800	RADIAL 235/85 R16 D	16 X 6	11' - 1"	33' - 10"	96"	T01, 07B2, 08, 12, 15, 18
35 CBD	8,500	12,500	7,650	850	RADIAL 235/85 R16 D	16 X 6	11' - 1"	35' - 10"	96"	T01, 03, 04, 05A, 07B2, 08, 12, 15, 18
35 FKD	8,500	12,500	7,650	850	RADIAL 235/85 R16 D	16 X 6	11' - 1"	35' - 10"	96"	T01, 02, 05A, 07B2, 08, 12, 15, 18
36 SA	8,500	12,500	7,650	850	RADIAL 235/85 R16 D	16 X 6	11' - 1"	36' - 10"	96"	T01, 03, 05A, 11, 14

## TRAVEL TRAILER STANDARDS/OPTIONS

MA KA	RETAIL COST	AIR CONDITIONING, HEATING & LP GAS	MA KA	RETAIL COST	APPLIANCES & ACCESSORIES
S S		Air Conditioner Central Brisk Air 13.5 BTU (1)	O S	41	Stool Aqua Magic Starlite
O O	905	Air Conditioner Central Brisk Air 13.5 BTU (extra)	O NA	65	Stool Aqua Magic Starlite w/Spray Attachment
S NA		Furnace 25M Electronic Ignition (28 & up)	NA O	76	Stool China w/Spray Attachment
NA S		Furnace 35M Electronic Ignition	S NA		Tub ABS w/Curtain
S S		Heat In Floor Ducted	S NA		Tub Surround
S S		LP Gas Bottles 2-30# Steel w/Auto Regulator	O S	153	Tub/Shower Enclosure
O O	51	LP See Level Gauges (set of 2)	O S	220	Tub/Shower Fiberglass
		<b>APPLIANCES &amp; ACCESSORIES</b>	O O	1478	Washer/Dryer One Piece (certain models)
S S		Bath Accessories Brass (1-towel bar, 1-towel ring, 1-robe hook)	O O	278	Washer/Dryer Prep w/Plumbing, Recept & Shelf (certain models)
O O	295	Blender	O O	1179	Washer/Dryer Two Piece (Sears)(certain models)
NA O	469	Faucet For Kitchen & Bath Deluxe Single Handle ILO STD	O O	155	Water Filtering System w/Drink Dispenser (kitchen)
S S		Faucet For Kitchen Sink Single Handle	S NA		Water Heater 6 Gal Gas
S S		Faucet For Shower & Lavatory Double Handle Deluxe (brass)	O NA	83	Water Heater 6 Gal Gas/Electric
NA O	732	Icemaker (110V) (where applic)	O NA	165	Water Heater 10 Gal Gas/Electric (where applic)(31 & up)
O O	76	Ironing Board (where applic)	NA O	254	Water Heater 10 Gal Gas/Electric w/DSI
O O	397	Microwave Oven (Sharp 22")	NA S		Water Heater 10 Gal Gas/Electric w/Reignitor
O NA	948	Microwave Oven Convection 30" (Sharp) w/4 Burner Hot Plate (where applic)	O O	50	Water Heater Bypass Kit
NA O	889	Microwave Oven Convection 30" (Sharp) w/4 Burner Hot Plate ILO STD	O NA	80	Water Heater Reignitor 12V
O O	799	Microwave Oven Non Convection 30" (Sharp)			<b>CABINETS &amp; FURNITURE</b>
S S		Microwave Prep (for 22" X 15")	NA O	545	Air Mattress For Queen Or Twin Beds (1 pr)
S S		Range Cover Bi-Fold	O O	60	Bed Queen (60" X 75")(where applic)
S S		Range Hood w/Light & Fan	O O	159	Bed Twin (32" X 75")ILO Double (where applic)
S NA		Range Magic Chef 4-Burner w/Oven 18" Porcelain, Blk Glass Door w/Pilot	O NA	379	Bunks Cabinet w/Foam Mat, 8X14 Window Above Each Twin Bed (where applic)
NA S		Range Magic Chef 4-Burner w/Oven 22" Porcelain, Blk Glass Door w/Pilot	O NA	480	Bunks Fixed w/Foam Mat, 15X48 Window Above Each Twin Bed (where applic)
NA O	503	Refrigerator Dometic Double Door 3804 AES	O NA	335	Cabinet Mini Hutch w/Lights & Mirror (where applic w/slideout)
NA S		Refrigerator Norcold Double Door 683 3-Way	NA O	1587	Cabinetry Bleached Oak Hardwood w/Raised Panel Doors
O NA	434	Refrigerator Norcold Double Door 683 3-Way ILO STD (where applic)	NA O	2402	Cabinetry Cherry Hardwood w/Raised Panel Doors
S NA		Refrigerator Norcold Single Door 6052 2-Way	NA O	1104	Cabinetry Oak Hardwood w/Raised Panel Doors
O O	479	Safe	S S		Cabinetry Oak w/Raised Panel Doors
S S		Sink Kitchen Double Porcelain	O O	358	Chair Swivel Rocker
NA S		Sink Lavatory Porcelain	O O	537	Chair Swivel Rocker Recliner w/Foot Rest
O NA	124	Split Bathroom Floorplan (where applic)	O O	44	Countertop Extension (where applic)
NA O	276	Split Bathroom Floorplan (where applic)	O O	0	Dinette Built In ILO STD
S NA		Stool Aqua Magic IV	S S		Dinette w/Inner Spring Cushions (see floorplan)
			O O	65	Drawer Below Fixed Dinette Seat (each)
			O O	180	Drawers Wood w/Metal Guides & Side Rollers
			NA O	435	Entertainment Center Base Cabinet (where applic)



# 1992 FLOOR PLANS



Large power slideouts between 13- and 17-foot-long, depending upon model, are now standard with most fifth-wheel floor plans. Large slideouts also are available with some models of Kountry Aire travel trailers.

Newmar Corporation's primary focus for 1992 continues to be on fifth-wheels and travel trailers designed



especially for full-time RVers and snowbirds — with year-around comfort and livability a major consideration.

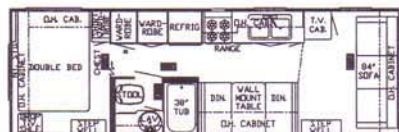
London Aire and Kountry Aire models are, of course, maintaining their enviable position as the ultimate RVs of choice for veteran travelers. For 1992, the Mountain Aire series has been expanded greatly in order to



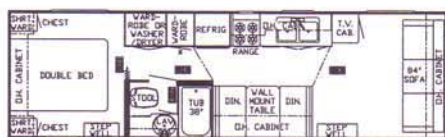
supplement Newmar's luxury lineup with a broad selection of attractively-priced, luxury coaches.

The Mountain Aire, which was introduced in the fall of 1990 with only three lengths of fifth-wheels, is now available in a variety of lengths and floor plans in both fifth-wheels and travel trailers.

## TRAVEL TRAILERS



MA 28' CBD T01, 06, 07A1, 10, 13B, 16, 19



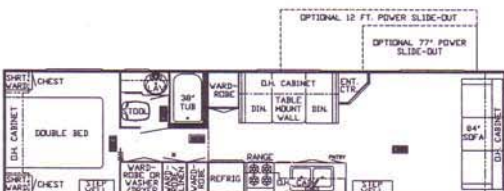
MA/KA 31' CBD T01, 06 (MA only), 07A1 (MA only), 07A2 (KA only), 08, 12, 15, 18



MA/KA 31' FKD T01, 07B1 (MA only), 07B2 (KA only), 08, 12, 15, 18



MA/KA 33' FKD T01, 07B1 (MA only), 07B2 (KA only), 08, 12, 15, 18



MA/KA 35' CBD T01, 03, 04, 05A, 06 (MA only), 07B1 (MA only), 07B2 (KA only), 08, 12, 15, 18



MA/KA 35' FKD T01, 02, 05A, 07B1 (MA only), 07B2 (KA only), 08, 12, 15, 18



MA/KA 36' SA T01, 03, 05A, 06 (MA only), 11, 14



T01



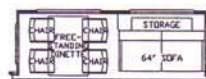
T02



T03



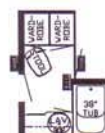
T04



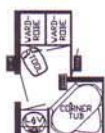
T05A



T06



T07A1



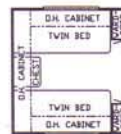
T07A2



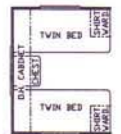
T07B1



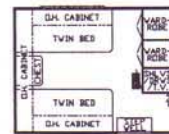
T07B2



T08



T10



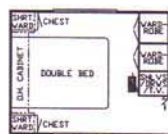
T11



T12



T13B



T14



T15



***"Newmar is widely regarded as one of the most innovative RV manufacturers in America."***

**RV Travel Adventures**

Power window awnings are standard on most models of London Aire fifth-wheels with front or rear windows.

Molded fiberglass roof ladder is standard on the rear of all London Aires.



Front stabilizer jacks for fifth-wheels are self-storing in the lower front wrap of the coach's alcove section. They are standard on London Aire, optional on Kountry Aire and Mountain Aire.

Patented automatic door stop retracts when entry door is closed. It is standard on all London Aires.

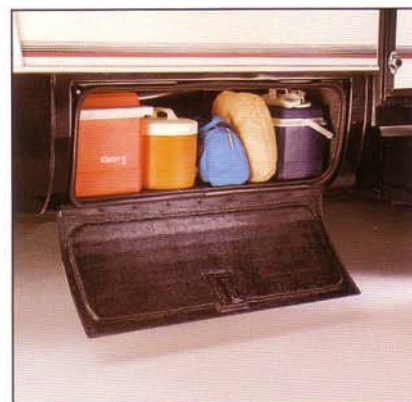


A fiberglass rear bumper with slideout tray containing the spare tire and electrical cord is standard on all London Aire and Kountry Aire towables. The Mountain Aire has space in its pull-out bumper for a spare tire.



Retractable, pull-down stone guards are standard on London Aire fifth-wheels and optional on Kountry Aire fifth-wheels. While traveling, they prevent road debris and mud from damaging the front of the coach.

Enclosed underbellies, above-the-axle floors and special frames allow Newmar to build its towables with basement storage spaces not offered by other RV companies.



Exterior storage space is important to our customers, so it is of primary concern to us. That's why you'll find storage spaces everywhere possible in our RVs — including in the outside of our new large slideouts.









- A** LA-2-130 Blue Diamond
- B** LA-2-131 Sapphire Sky
- C** LA-2-132 Rainbow Pearl
- D** LA-2-133 Emerald Glow

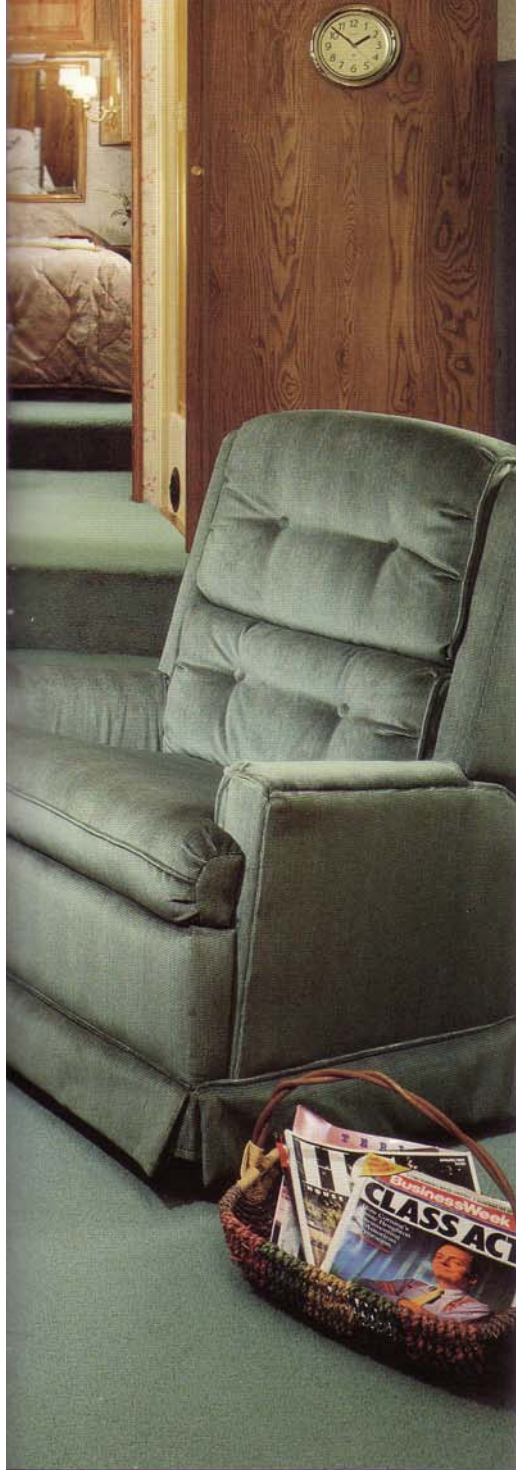


- E** KA-2-123 Sunset Blue
- F** KA-2-124 Orchid Shadows
- G** KA-2-125 Teal Frost
- H** KA-2-126 Almond Blossom
- I** KA-2-127 Crystal Blue
- J** KA-2-128 Teal Splendor
- K** KA-2-129 Rose Frost



- E** MA-2-116 Sunset Blue
- F** MA-2-117 Orchid Shadows
- G** MA-2-118 Teal Frost
- H** MA-2-119 Almond Blossom
- I** MA-2-120 Crystal Blue
- J** MA-2-121 Teal Splendor
- K** MA-2-122 Rose Frost





***"Already a top-quality, luxury-grade fiver, the Mountain Aire with the big slideout becomes even more attractive to full-timers or others interested in extra-large fifth-wheel trailers."***

**Trailer Life magazine**



Soft shades are standard in Mountain Aire towable RVs. The neutral-tone, easy-lift style privacy shades have one-inch pleats. Also included as a standard window decor package are draperies with matching tiebacks and cornices.

***"In the travel mode, there's enough space next to the sliding room to reach the refrigerator, the sink and many of the kitchen cabinets; so, snacking en route is possible."***

**Trailer Life magazine**



Washer/dryer systems are increasingly popular options in our fifth-wheel trailers, so we provide space for them in many models.





Spacious 17-foot-long slideouts are standard in 40-foot Mountain Aire fifth-wheels, and slideouts of 13- to 16-feet are standard with other lengths.

The coach shown here is a 32WRKD model with a 13-foot slideout.

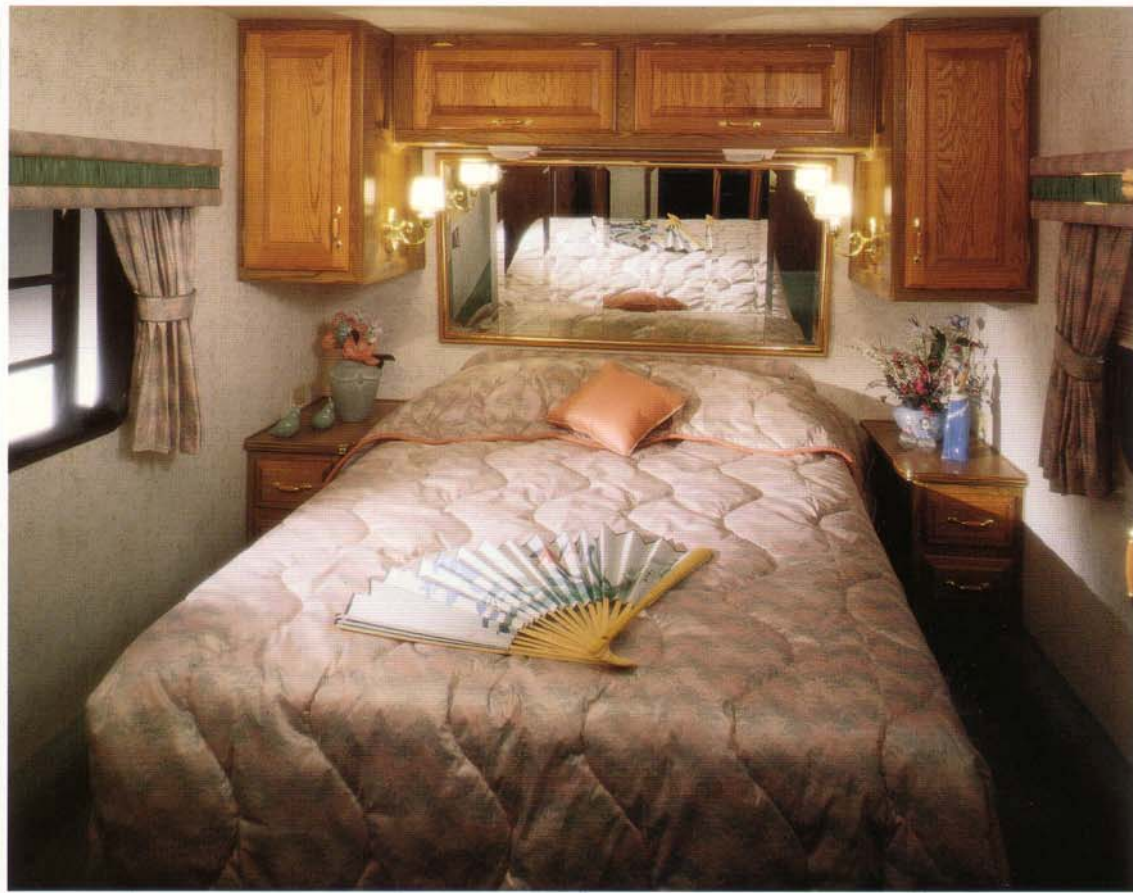
Each of the slideouts is equipped with a freestanding dinette table and chairs and a home-style sofa/bed. The largest of the slideouts also features a room divider and overhead cabinet

with decorative glass doors between the sofa and dinette.

An optional roadside slideout in the bedroom is available with some fifth-wheel floor plans.



# MOUNTAIN AIRE



**M**ountain Aire fifth-wheels made their debut during the spring of 1990 and were immediately successful.

For 1992, the fifth-wheel lineup has been expanded considerably and several models of travel trailers added. (Here you see the front bedroom of a 32WRKD model.)

In the Mountain Aire series, Newmar Corporation offers veteran RVers a luxury-class, but attractively

priced recreational vehicle that has the distinctively familiar profile of the famous Kountry Aire line.

Built with Newmar's lightweight aluminum framing, the Mountain Aire is well insulated for use in either hot or cold temperatures and tastefully decorated with furniture and fabrics that are both homey and practical.







Bleached oak hardwood cabinets are certain to be a popular option in Kountry Aire fifth-wheels for 1992. Standard Kountry Aire cabinets have raised-panel natural oak doors. New

color-coordinated, laminated counter-tops, backsplashes and cabinet dividers are added for 1992. This kitchen is part of a 38WDSK floor plan.

***"You've always wanted to own a Kountry Aire, haven't you? Why not reward yourself with one now?"***

Ad in spring edition,  
**RV Travel Adventures**



Slideout pantries designed to help you carry plenty of canned goods and packaged food are a standard feature in all Kountry Aires.



Every traveling cook appreciates the presence of under-sink storage space.



Lazy susans designed especially for RVs have two tiers, shelf retainers and stops to prevent twirling in-transit.





We don't expect to sell many fifth-wheels like this one, but our photographer shot this picture to emphasize a point: the spaciousness of our 17-foot slideout.



Genuine leaded glass cabinet doors are standard in Kountry Aire towables. The glass is beveled in an elegant diamond motif.

Parquet flooring in the kitchen area is a popular option of Kountry Aire fifth-wheels and travel trailers. It is available in the London Aire and Mountain Aire series, too.



***"We bought our Kountry Aire because of the quality — more than any other brand we looked at."***

Kenneth and Luella Keeny  
Lebanon, Oregon





Newmar Corporation is the RV industry's slideout specialist. It's true that some other companies build RVs with slideouts too, but Newmar does it right!

No one but Newmar has the technological expertise to build a travel trailer with a 13-foot-long power slideout such as the Kountry Aire pictured on the previous page.

And no one else can produce a fifth-wheel with a 17-foot slideout (like the one above) that matches Kountry Aire's reputation for dependability, livability and comfort.



# KOUNTRY AIRE



**K**ountry Aire! It's a name that represents quality in the mind of virtually every veteran RVer. Kountry Aire travel trailers (such as the one above) and fifth-wheels have a positive image that no competitive brand can match.

That's because Kountry Aire travel trailers and fifth-wheels **deliver** more quality than other RVs even **promise**. Sure, when you buy a Kountry Aire, you'll get the quality construction, quality features, quality workmanship and quality materials that this brand's reputation has led you to expect.

But Kountry Aire also gives you quality RV lifestyle experience and quality on-the-road-serviceability.

We build the best RV we can for you because we know you want to travel with it as much as possible. And we provide you with a support network of top-quality dealers so that if something **does** go wrong, you are assured that you can find a Kountry Aire service center that will devote its attention to putting you back on the road again — quickly!







***"How an RV is built is extremely important to us because it is our home. We live full time in it, and we travel many thousands of miles with it every year. The London Aire, with its sturdy aluminum construction and its warm, home-style furnishings, is the fifth-wheel we prefer."***

Hal and Penny Gaynor  
RV Safety Clinic

Full basement storage space is provided around the entire perimeter of every 1992 London Aire fifth-wheel due to a bold step forward in undercarriage design.

A special 16-inch I-beam frame forms the foundation of the new London Aires. Its special frame rails, which are built closer together, and a sidewall bottom wrap made of molded fiberglass enable huge storage compartments to be built into the base line as part of the coach's enclosed underbelly.

As a result, no exterior compartments protrude into the coach's interior, taking valuable storage space away from inside cabinets or from under-bed space.

Along with the rest of the London Aire's superstructure, the new I-beam is backed by Newmar's Limited Lifetime Warranty.





London Aire's popular 40WRKD fifth-wheel has a spacious bathroom with corner tub, a linen closet and a huge wardrobe with mirrored doors as well as plenty of drawers.

*"The bathroom has more than adequate dressing space, even if another person is standing at the vanity sink, and there's easy access to the full-length wardrobe . . ."*

**Trailer Life** magazine

Ceramic tile flooring is optional in London Aire bathrooms. In each coach, it is color-coordinated with the carpeting and wall vinyl and is installed with neutral-tone grouting. Besides being an attractive addition to a bathroom, it is easy to maintain.







"Honeymoon Suite" bedrooms pioneered by Newmar Corporation offer versatile nighttime living space, especially in fifth-wheels equipped with front power slideouts.

A spacious walk-around floor area appears when the slideout is extended (as shown here), providing easy access to the glass-door front closet and a built-in chest.

Bedsprad and pillow shams are standard, along with cherry (or optional walnut, oak or bleached oak) cabinetry.

New London Aire cosmetic lights for 1992 are brass with decorative Lucite diffusers and three cosmetic bulbs.







***"No doubt about it. Newmar builds the finest trailer on the market."***

Al and Carolyn Hancock  
Sarasota, Florida



Relax. Lie back. Put your feet up. You've had a long day on the road, and you deserve some quiet time. You're home now, in your London Aire, in your favorite chair — your rocker with a foot rest that also reclines and swivels. So dream about tomorrow's adventures . . .

A ceiling fan that stirs the air just a little is perfect when the days are not quite warm enough for your London Aire's central air conditioning system.



Snowbirds and full-time RVers told Newmar they wanted a freestanding dinette with a hardwood table, four comfortable chairs and plenty of space for mealtimes, casual conversations

and playing cards. Newmar listened. And for 1992, the dinette you see below is standard in all London Aire fifth-wheels with large slideouts.







Elegance beyond compare is the norm in all London Aire fifth-wheels such as this 40WRKD with its standard 17-foot slideout, all-new cherry cabinetry, swivel/rocker/recliner chair and genuine leaded glass cabinet doors.

The slideout contains a freestanding dining table with four upholstered chairs, a room divider/hutch and a large sofa that converts into a full bed. Behind the sofa is a hardwood shelf for displaying knicknacks or photographs;

its hinged top hides a practical storage space for pillows and linens.

From the plush extra-thick pile of the padded carpet to the woven soft-touch ceiling, the London Aire is designed to be a home-away-from-home for people who demand the best.



# LONDON AIRE



**L**ondon Aire fifth-wheels by Newmar Corporation are the ultimate in towable recreational vehicles.

Whether they are furnished with the rich new cherry cabinetry or the satin-smooth walnut (a no-cost option), they boast of the finest craftsmanship and elegance available.

Shown above is the rear kitchen of a 1992 London

Aire 40-foot fifth-wheel with the stunningly beautiful cherry hardwood.

Standard features of this coach include Corian countertop, slideout pantry, lazy susans in most corner cabinets, microwave convection oven, four-burner range, large double-door three-way AES refrigerator, double porcelain sink and water filtering system.





# KOUNTRY STYLE AIRE CONTENTS

Volume VI

1992 Model Year



## About the cover . . .

The 1992 London Aire 40WRKD fifth-wheel features optional walnut cabinetry at no extra cost and a 17-foot power slideout section that adds nearly four feet of additional width in the living room and kitchen areas.



Newmar Corporation pioneered the popular "Honeymoon Suite" layouts in its fifth-wheel bedrooms . . . Page 6



Parquet floors are available in the kitchens of all Aire RV products . . . . . Page 11



A large power slideout is optional for the Kountry Aire travel trailer . . . . . Page 9



Basement compartments around the entire perimeter of some models provide never-before-available storage space . . . . . Page 18

## Features

### LONDON AIRE . . . . . 3

Regarded as the world's best fifth-wheel, the London Aire is Newmar's top-of-the-line coach.

### KOUNTRY AIRE . . . . . 9

These are the trailers that built Newmar's reputation and set the RV industry's quality standards.

### MOUNTAIN AIRE . . . . . 13

The newest member of Newmar's luxury-class RV family, this line has been expanded for 1992.

### INTERIOR COLORS FOR 1992 . . . . . 16

Warm tones complement rich wood cabinetry and luxury fabrics in Newmar's new color packages.

### FLOOR PLANS . . . . . 19

Choose from a selection of layouts that fits the lifestyles of today's snowbirds and full-time RVers.



#### London Aire — \*Lifetime Warranty on Superstructure

Newmar Corporation warrants the Superstructure which includes the following: the 16" I-beam Frame; the Aluminum Framing in the Sidewalls and Roof. If any part of the Superstructure fails to perform properly because of faulty workmanship or materials supplied by Newmar, during the ownership of the original buyer, it will be repaired without charge for either parts or labor by Newmar providing the proper claim procedures are followed. All other items excluding the Superstructure are covered under the standard Newmar 1 Year Limited Warranty. See Owner's Manual for details.

#### Kountry Aire, Mountain Aire — \*5 Year Limited Warranty on Superstructure

Newmar Corporation warrants the Superstructure which includes the following: the 12" I-beam Frame; the Aluminum Framing in the Sidewalls and Roof. If any part of the Superstructure fails to perform properly within 5 years from the date of purchase because of faulty workmanship or materials supplied by Newmar, during the ownership of the original buyer, it will be repaired without charge for either parts or labor by Newmar providing the proper claim procedures are followed. All other items excluding the Superstructure are covered under the standard Newmar 1 Year Limited Warranty. See Owner's Manual for details.

## STAFF

Publisher	Mahlon Miller
Coordinator	Jimmy Long
Editor	Don Wright
Art Director	Jim Eikenberry
Photographer	Dave Hugus
Stylist	Bonnie Hoffer
Printer	Ann Robbins