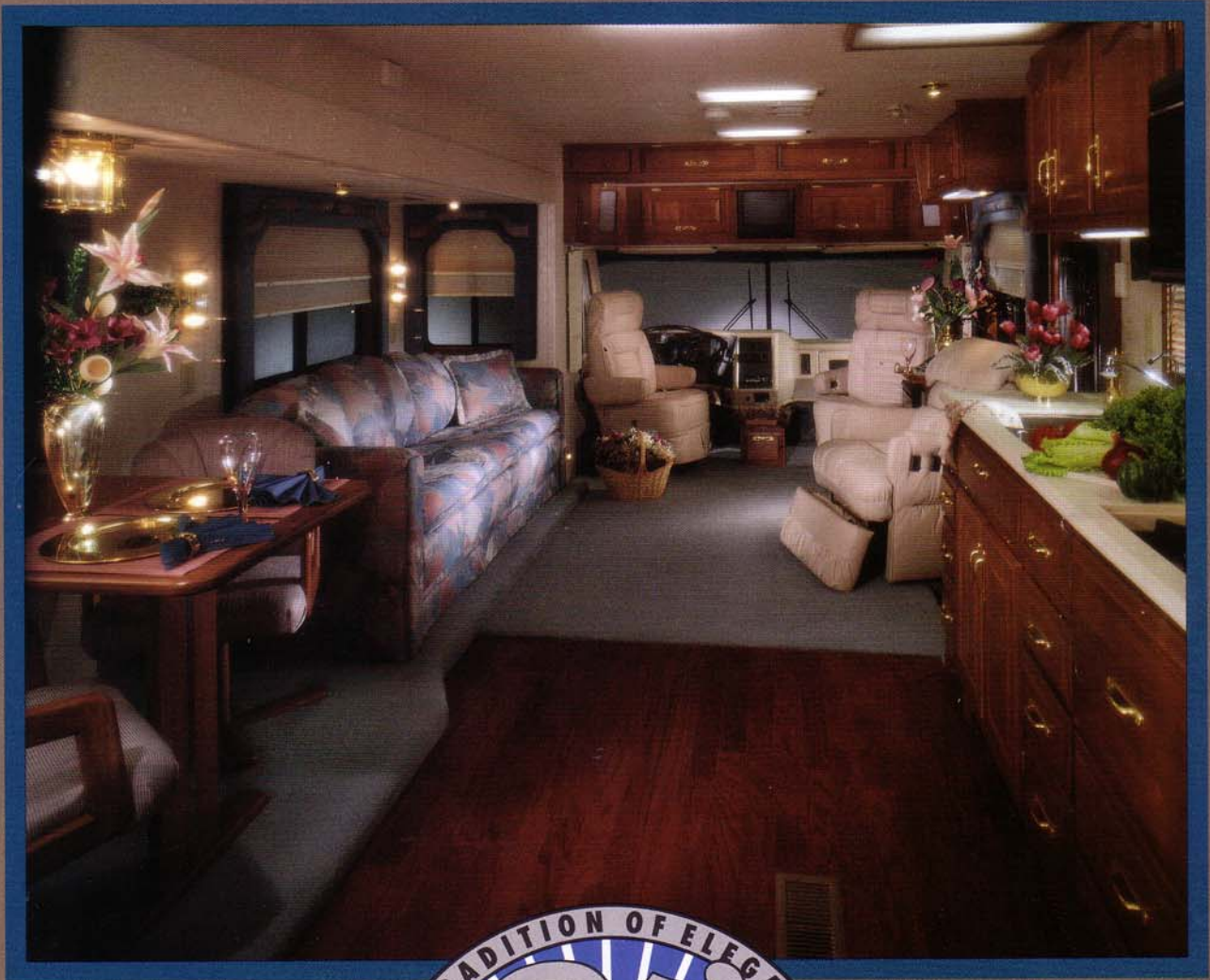


# COUNTRY STYLE

A publication of Newmar Corporation

Motorhomes, 1993 Model Year







## Newmar Corporation

Uncompromising work standards, ethics and service are only part of what Newmar's world-class quality is all about. An unending passion for this recreation combined with professionals who are experienced RVers themselves, work together to produce distinctive, dependable and durable products that will serve you for many years in a variety of climates. Comfort and convenience go hand-in-hand with any Newmar Product.

Our conviction to satisfy our customers is unchallenged and our aim is to maintain the highest standards in quality

and customer service in the industry. A nationwide dealer network is out there ready to serve you and is backed by the Newmar commitment. We are so dedicated to these philosophies that we personally invite you to visit our plant in Nappanee, Indiana (just off U.S. 6 west of town). Tours are offered weekdays at 10 a.m. and 2 p.m. E.S.T. We want our customers to see how we do things firsthand. We want to meet you and extend a welcome into the world of recreational vehicles from a company that sets the trends and standards for the industry . . . Newmar Corporation.



355 N DELAWARE ST  
P O BOX 30  
NAPPANEE IN 46550-0030  
(219) 773-7791 FAX (219) 773-2895



Scheduled plant tours Monday-Friday

Prices and specifications are subject to change at Newmar's discretion without written notice or obligation.



# CLASS A AND DIESEL PUSHER STANDARDS

DS CA	KS CA	MA CA	KA CA	KS DP	LA DP	RETAIL COST	RUNNING GEAR & CONSTRUCTION
S	S	S	S	NA	NA		Skid Bars For Rear Bottom Protection
NA	S	S	S	S	NA	224	Spare Tire
S	S	S	S	S	S		Structure, Aluminum Sidewalls & Roof
NA	NA	NA	NA	NA	S		Structure, Contoured Sidewalls w/Recessed Belt Line
NA	S	S	S	NA	NA		Suspension Granning Tag Axle (34 & up)
S	S	S	S	S	S		Undercoating
O	S	S	NA	NA	NA	160	Wheel Covers
NA	O	O	S	NA	NA	54	Wheel Simulator Stainless Steel (each)
NA	NA	NA	NA	S	S		Wheels Polished Aluminum

## WINDOWS, DOORS, AWNINGS & VENTS

O	NA	NA	NA	NA	NA	826	Awning Side A & E 8500
NA	O	O	O	O	S	1029	Awning Side A & E 9000

DS CA	KS CA	MA CA	KA CA	KS DP	LA DP	RETAIL COST	WINDOWS, DOORS, AWNINGS & VENTS
NA	O	O	O	O	NA	208	Awning Window A & E 9000 (per window) (specify location)
NA	NA	NA	NA	NA	S		Awning Window A & E 9000 (w/a)
NA	NA	NA	NA	NA	S	39	Door Bell
O	O	O	S	O	S	1256	Door Driver's Side w/Power Window & Passenger Side Panel
NA	NA	NA	NA	NA	S		Door Stop Auto Flush Recessed (1)
NA	NA	NA	NA	NA	S		Lighted Grab Handle w/Inside Switch
O	O	O	S	O	S	209	Skylight In Bathroom w/Soft Shade
NA	O	O	O	O	NA	335	Vent 12V Fantastic 3-Speed w/Power Opener (specify location)
NA	NA	NA	NA	NA	S		Vent 12V Fantastic 3-Speed w/Power Opener In Bath & Kitchen
S	S	S	S	S	NA		Vent 12V In Bath Area w/Wall Switch
S	S	S	S	S	S		Windows Radius Slider Safet Glass Dark Tinted

## CLASS A

MODEL	CHASSIS	ENGINE	DRIVE AXLE RATIO	FUEL CAP. (GAL.)	FRONT GAWR	DRIVE GAWR	TAG GAWR	GVWR	GCWR	*UNLOADED VEHICLE WEIGHT	WHEEL BASE	OVERALL			INTERIOR		(GALLONS)			LP GAS (GAL.)
												LENGTH	HEIGHT	WIDTH	HEIGHT	WIDTH	FRESH WATER	GREY WATER	BLACK WATER	
DS 27 WCB	CHEVY	454	4.63	80	5,500	10,500	NA	16,000	20,000	11,565										
	FORD	460	5.13	75	6,000	11,000	NA	17,000	25,000	11,625	178	27'-8"	11'-5"	96"	78"	90 1/2"	30	25	25	15
	OSHKOSH	190	3.31	90	5,600	10,000	NA	15,600	22,000	11,314										
DS 31 CBD	CHEVY	454	4.63	80	5,500	10,500	NA	16,000	20,000	12,240										
	FORD	460	5.13	75	6,000	11,000	NA	17,000	25,000	12,300	200	31'-10"	11'-5"	96"	78"	90 1/2"	30	25	25	15
	OSHKOSH	190	3.31	90	5,600	10,000	NA	15,600	22,000	11,992										
DS 31 CBDS	CHEVY	454	4.63	80	5,500	10,500	NA	16,000	20,000	13,180										
	FORD	460	5.13	75	6,000	11,000	NA	17,000	25,000	13,120	200	31'-10"	11'-5"	96"	78"	90 1/2"	30	25	25	15
	OSHKOSH	190	3.31	90	5,600	10,000	NA	15,600	22,000	12,932										
DS 34 CBDS	CHEVY	454	4.63	80	5,500	10,500	NA	16,000	20,000	14,120										
	FORD	460	5.13	75	6,000	11,000	NA	17,000	25,000	14,060	228	34'-3"	11'-5"	96"	78"	90 1/2"	30	25	25	15
	OSHKOSH	190	3.31	90	5,600	10,000	NA	15,600	22,000	13,872										
DS 34 SACB	CHEVY	454	4.63	80	5,500	10,500	NA	16,000	20,000	12,600										
	FORD	460	5.13	75	6,000	11,000	NA	17,000	25,000	12,625	228	34'-7"	11'-5"	96"	78"	90 1/2"	30	25	25	15
	OSHKOSH	190	3.31	90	5,600	10,000	NA	15,600	22,000	12,325										
KS/MA/KA 29 WCB	CHEVY	454	4.63	80	5,500	10,500	NA	16,000	20,000	12,819										
	FORD	460	5.13	75	6,000	11,000	NA	17,000	25,000	13,279	178	29'-10"	11'-8"	96"	78"	90 1/2"	45	50	50	15
	OSHKOSH	190	3.31	90	5,600	10,000	NA	15,600	22,000	12,969										KA 32
KS/MA/KA 32 WCB	CHEVY	454	4.63	80	5,500	10,500	NA	16,000	20,000	13,348										
	FORD	460	5.13	75	6,000	11,000	NA	17,000	25,000	13,807	200	32'-7"	11'-8"	96"	78"	90 1/2"	45	50	50	15
	OSHKOSH	190	3.31	90	5,600	10,000	NA	15,600	22,000	13,489										KA 32
KS/MA/KA 34 CBD	CHEVY	454	4.63	80	5,500	10,500	4,000	16,000	20,000	14,634										
**	FORD	460	5.13	75	6,000	11,000	4,000	17,000	25,000	15,093	178 TAG	34'-7"	11'-8"	96"	78"	90 1/2"	45	50	50	15
	OSHKOSH	190	3.31	90	5,600	10,000	4,000	15,600	22,000	14,719										KA 32
KS/MA/KA 34 WCB	CHEVY	454	4.63	80	5,500	10,500	4,000	16,000	20,000	14,534										
**	FORD	460	5.13	75	6,000	11,000	4,000	17,000	25,000	14,993	178 TAG	34'-7"	11'-8"	96"	78"	90 1/2"	45	50	50	15
	OSHKOSH	190	3.31	90	5,600	10,000	4,000	15,600	22,000	14,619										KA 32
KS/MA/KA 37 CBSA	CHEVY	454	4.63	80	5,500	10,500	4,000	16,000	20,000	15,057										
**	FORD	460	5.13	75	6,000	11,000	4,000	17,000	25,000	15,797	200 TAG	37'-11"	11'-8"	96"	78"	90 1/2"	45	50	50	15
	OSHKOSH	190	3.31	90	5,600	10,000	4,000	15,600	22,000	15,143										KA 32
KS/MA/KA 37 WDSK	CHEVY	454	4.63	80	5,500	10,500	4,000	16,000	20,000	15,338										
**	FORD	460	5.13	75	6,000	11,000	4,000	17,000	25,000	15,516	200 TAG	37'-11"	11'-8"	96"	78"	90 1/2"	45	50	50	15
	OSHKOSH	190	3.31	90	5,600	10,000	4,000	15,600	22,000	15,424										KA 32

## DIESEL PUSHER

KS 32 CBD	SPARTAN	190	3.73	60	6,000	12,000	NA	18,000	22,000	14,408	180	32'-0"	11'-8"	96"	78"	90 1/2"	65	45	45	32
KS/LA 34 CBDS	SPARTAN	250	4.63	100	9,000	17,000	NA	26,000	31,000	18,675	208	34'-4"	11'-8"	96"	78"	90 1/2"	65	57	57	32
KS/LA 38 CBSA	SPARTAN	250 LA 300	4.63	100	9,000	17,000 LA 19,000	NA	26,000	31,000 LA 35,000	19,973 LA 23,488	252	38'-0"	11'-8"	96" LA 102"	78"	90 1/2" LA 93"	115	57	57	32
KS/LA 38 WDSK	SPARTAN	250 LA 300	4.63	100	9,000	17,000 LA 19,000	NA	26,000	31,000 LA 35,000	20,250 LA 23,773	252	38'-0"	11'-8"	96" LA 102"	78"	90 1/2" LA 93"	115	57	57	32
KS 40 CBD	SPARTAN	300	4.63	100	9,000	19,000	NA	26,000	35,000	20,898	276	40'-0"	11'-8"	96"	78"	90 1/2"	115	57	57	32
KS/LA 40 CBSA	SPARTAN	300	4.63	100	9,000	19,000	NA	26,000	35,000	20,513 LA 24,130	276	40'-0"	11'-8"	96" LA 102"	78"	90 1/2" LA 93"	115	57	57	32
KS/LA 40 WDSK	SPARTAN	300	4.63	100	9,000	19,000	NA	26,000	35,000	20,798 LA 24,430	276	40'-0"	11'-8"	96" LA 102"	78"	90 1/2" LA 93"	115	57	57	32

\*ADD APPROXIMATELY 200 LBS. TO UNLOADED VEHICLE WEIGHT FOR KOUNTRY AIRE CLASS "A".\*\*ADD APPROXIMATELY 2,500 LBS. FOR TAG AXLE TO GVWR FOR KS/MA/KA CLASS "A".



**Duo-THERM**  
by Dometic

**A&E Systems\***  
by Dometic

**Dometic\***  
Our goal... your satisfaction.

### LEGEND

#### FLOORPLANS

**CBD** Center Bath Dinette  
**CBSA** Center Bath, Side Aisle,  
Door Side Kitchen  
**RB** Rear Bath  
**RK** Rear Kitchen  
**SA** Side Aisle Bath

**SACB** Side Aisle, Center Bath,  
Road Side Kitchen  
**SS** Super-storage Model  
**WCB** Walk Through Center Bath  
**WDSK** Walk Through Bath  
w/Door Side Kitchen

#### SPECIFICATIONS

**CA** Class A Motorhome  
**DS** Dutch Star  
**KA** Kountry Aire  
**KS** Kountry Star  
**ILO** In Lieu Of  
**MA** Mountain Aire  
**MI** Mini Home  
(Mini Motorhome)  
**NA** Not Applicable  
**O** Option  
**S** Standard



# CLASS A AND DIESEL POWER STANDARD OPTIONS

DS	KS	MA	KA	KS	LA	RETAIL	
CA	CA	CA	CA	DP	DP	COST	ELECTRICAL & LIGHTING EQUIPMENT
S	S	S	S	NA	NA	133	Battery 115 AMP Sears DieHard Deep Cycle
NA	NA	NA	NA	S	NA		Battery 115 AMP Sears DieHard Deep Cycle (2)
NA	NA	NA	NA	S	NA		Battery 115 AMP Sears DieHard Deep Cycle (3)
O	O	O	O	O	NA	125	Battery 115 AMP Sears DieHard Deep Cycle Extra
O	O	O	S	O	S	339	Battery Disconnect
O	O	O	O	O	S	304	CB Radio
NA	NA	NA	NA	NA	S		Cellular Telephone Antenna
S	S	NA	NA	S	NA		Converter 40 AMP w/Charger
NA	NA	S	S	NA	S		Converter 50 AMP w/Charger
S	S	S	S	S	NA		Electrical Service 30 AMP
NA	O	O	O	O	NA	221	Electrical Service 50 AMP
NA	NA	NA	NA	NA	S		Electrical Service 50 AMP w/12V Powered Rewind For Cord
O	NA	NA	NA	NA	NA	2625	Gen 4.0 KW Onan w/1 Remote Switch
NA	NA	S	S	NA	NA		Gen 4.0 KW Onan w/1 Remote Switch & Auto Changeover
NA	NA	O	O	NA	NA	1256	Gen 6.5 KW Onan ILO STD
NA	O	NA	NA	NA	NA	3821	Gen 6.5 KW Onan w/1 Remote Switch
NA	NA	NA	NA	O	S	7424	Gen 7.5 KW Onan (Diesel) w/2 Remote Switches & Auto Changeover
S	NA	NA	NA	NA	NA	244	Gen Prep (110 V/wire, remote start wire & door)(w/a)
NA	S	NA	NA	S	NA		Gen Prep (auto changeover, 110V wire, remote start wire
NA	NA	NA	NA	O	S	353	Horn (air)
O	O	O	S	NA	NA	110	Horn (trumpet)
NA	NA	NA	NA	NA	S		Inverter 1700 Watt
NA	NA	NA	NA	NA	S		Light Exterior Security (4)
O	O	O	O	O	NA	40	Light Exterior Security (each)(specify location)
O	O	O	S	O	S	368	Light Spot w/Remote Control
NA	O	O	S	O	S	406	Lighting Fluorescent Recessed In Ceiling
NA	O	O	S	O	S	333	Lights Docking
NA	NA	NA	NA	NA	S		Lights Driving
O	O	O	S	O	NA	115	Lights Fog
NA	NA	NA	S	NA	S		Lights In Wardrobe w/Automatic Switches
NA	NA	NA	S	NA	S		Lights Interior Courtesy
S	S	S	S	S	S		Lights In Exterior Storage Compartments
O	S	S	S	S	S	178	Monitor Panel
S	S	S	S	S	S		Recept 110V GFI (interior & exterior)
NA	O	O	O	O	S	1703	Security System
S	NA	NA	NA	NA	NA	167	Stereo AM/FM Cassette
NA	S	S	S	S	S	334	Stereo AM/FM Cassette w/Clock
NA	NA	NA	NA	NA	S		Stereo AM/FM Cassette w/Clock & Graphic Equalizer (bedroom)
O	S	S	S	S	S	65	Switch For Emergency Chassis Engine Start
S	NA	NA	NA	NA	NA		TV Antenna Prep (wire, shelf & 2 jacks)
O	S	S	S	S	S	193	TV Antenna w/Power Booster & 2 Jacks
NA	S	S	S	S	S		TV Cable Hookup
O	S	S	S	S	NA	400	TV Color 13" AC w/Remote Control
NA	NA	NA	NA	NA	S		TV Color 13" AC w/Remote Control (2)
NA	O	O	O	O	S	44	TV Jack Exterior On Door Side
NA	O	O	O	O	S	2046	TV Monitor Closed Circuit Rear View & Back Up Lights
NA	NA	NA	NA	NA	S		TV Video Switch
NA	NA	NA	NA	NA	S		Telephone Hookup w/2 Jacks
NA	O	O	O	O	NA	44	Telephone Jack Interior (each) (specify location)
NA	NA	NA	NA	NA	S		VCR
O	O	O	O	O	NA	83	VCR Prep

## EXTERIOR FEATURES

S	NA	NA	NA	NA	NA	37	Bumper Cover Aluminum
NA	S	S	S	S	S		Exterior Front & Rear Gel-Coated Fiberglass End Caps
NA	S	S	S	S	S		Exterior Sides Gel-Coated Fiberglass
S	NA	NA	NA	NA	NA		Exterior Sides Smooth Aluminum
NA	NA	NA	S	NA	NA		Mirrors Exterior w/Convex & Defrost
NA	NA	NA	O	NA	NA	230	Mirrors Exterior w/Convex, Remote Control, Defrost & Turn Signal
NA	O	O	NA	O	S	555	Mirrors Exterior w/Convex, Remote Control, Defrost & Turn Signal
NA	NA	NA	O	NA	S	22	Roof Gel-Coated Fiberglass (per ft)
O	O	O	O	O	NA	180	Roof Rack & Ladder
NA	NA	NA	NA	NA	S		Roof Rack, Handrails & Molded Recessed Steps In Rear Cap
NA	S	S	S	S	NA	17	Roof Rubber (per ft)

Selected Option Packages are available at a discount. Please consult your dealer for details.

DS	KS	MA	KA	KS	LA	RETAIL	
CA	CA	CA	CA	DP	DP	COST	EXTERIOR FEATURES
NA	O	O	O	NA	NA	3519	Slideout 65" w/Hide-A-Bed (29 WCB)
NA	O	O	NA	O	NA	4887	Slideout Large w/Free Standing Dinette (32 & up)
NA	NA	NA	O	NA	NA	5229	Slideout Large w/Free Standing Dinette (32 & up)
NA	NA	NA	NA	NA	S		Slideout Large w/Free Standing Dinette (see floor plans)
O	S	S	S	S	S	306	Step 12 Volt Automatic
NA	S	S	S	S	NA		Step Fold Down In Front Bumper

DS	KS	MA	KA	KS	LA	RETAIL	
CA	CA	CA	CA	DP	DP	COST	INTERIOR FEATURES
NA	NA	NA	NA	NA	S		Bedspring Quilted w/Matching Shams & Accent Pillow
O	NA	NA	NA	NA	NA	153	Bedspring Quilted w/Matching Shams (1)
NA	S	S	S	S	NA	228	Bedspring Quilted w/Reversed Shams & Accent Pillow (1)
NA	S	S	S	S	S		Ceiling Woven Soft Touch
NA	S	S	S	S	S		Decorative Clock
S	S	S	S	S	S		Floor Covering, Carpet w/High Density Pad Throughout
NA	NA	NA	NA	NA	O	897	Floor Covering, Ceramic Tile In Bath Area
NA	O	O	O	O	NA	480	Floor Covering, Hardwood Parquet In Kitchen Area
NA	NA	NA	NA	NA	S	1021	Floor Covering, Hardwood Plank In Kitchen Area
S	NA	NA	NA	NA	NA		Sink Cover One
NA	S	S	S	S	S		Sink Covers Two
S	S	S	NA	S	NA		Smoke Detector & 5# Fire Extinguisher
NA	NA	NA	S	NA	S		Smoke Detector & 10# Fire Extinguisher
O	O	O	O	O	O		State Seal
NA	NA	NA	S	NA	S		Waste Basket & Convenience Light In Kitchen
NA	NA	NA	NA	NA	S		Window Garnish (residential style)
NA	S	S	S	S	S		Window Treatmt Day/Night Soft Shades, Lamberquins
NA	S	S	S	S	S		Window Treatmt Mini Blinds (kitchen & bath)
S	NA	NA	NA	NA	NA		Window Treatmt Mini Blinds (throughout)

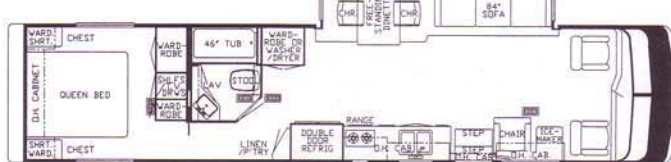
DS	KS	MA	KA	KS	LA	RETAIL	
CA	CA	CA	CA	DP	DP	COST	PLUMBING SYSTEMS
NA	O	O	O	NA	NA	225	Heat Pads for Holding Tanks 110V
NA	O	O	O	S	S	90	Sewage Holding Tank Rinse
NA	S	S	S	S	S		Sewage Hose Holder
S	NA	NA	NA	NA	NA		Tank Gray Water 25 Gallons (approximate)
NA	NA	NA	NA	S	NA		Tank Gray Water 45 Gallons (approximate)(32)
NA	S	S	S	NA	NA		Tank Gray Water 50 Gallons (approximate)
NA	NA	NA	NA	S	S		Tank Gray Water 57 Gallons (approximate) (38-40)
S	NA	NA	NA	NA	NA		Tank Sewage Holding 25 Gallons (approximate)
NA	NA	NA	NA	S	NA		Tank Sewage Holding 45 Gallons (approximate)(32)
NA	S	S	S	NA	NA		Tank Sewage Holding 50 Gallons (approximate)
NA	NA	NA	NA	S	S		Tank Sewage Holding 57 Gallons (approximate)(38-40)
S	NA	NA	NA	NA	NA		Water Capacity 30 Gallons (approximate)
NA	S	S	S	NA	NA		Water Capacity 45 Gallons (approximate)
NA	NA	NA	NA	S	NA		Water Capacity 65 Gallons (approximate)(32)
NA	NA	NA	NA	S	S		Water Capacity 115 Gallons (approximate) (38-40)
NA	NA	NA	NA	S	S		Water Hose w/Auto Rewind w/City Water Hook-Up
S	S	S	S	S	S		Water System Demand w/12V Pump & 5/8" Polybutylene Lines

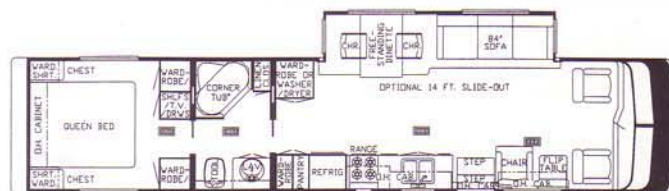
DS	KS	MA	KA	KS	LA	RETAIL	
CA	CA	CA	CA	DP	DP	COST	RUNNING GEAR & CONSTRUCTION
NA	NA	S	S	NA	S		Floor Decking Plywood
S	S	NA	NA	S	NA		Floor Decking Structurwood
O	O	O	O	O	S	323	Hitch For Towing Car w/Wire Connector
S	S	S	NA	S	NA		Insulation Fiberglass R5 Sidewalls, Floor & Roof
NA	NA	NA	S	NA	S		Insulation Fiberglass R7 Sidewalls & Floor R19 Roof
S	S	S	S	S	S		Insulation Foam 5/8" Laminated In Sidewalls & Ceiling
NA	NA	NA	NA	NA	S		Insulation Fome-Cor Exterior Roof
NA	O	O	NA	O	NA	174	Insulation Polar Pak (R7 sidewalls & floor, R10 roof)
S	S	S	S	NA	NA		Jack Hydraulic - 6 Ton
O	O	O	S	NA	NA	3114	Jacks Hydraulic Leveling
NA	NA	NA	NA	O	S	5335	Jacks Hydraulic Leveling w/Automatic Control
S	S	S	S	S	S		Mud Flaps (front & rear)
NA	S	S	S	NA	NA		Rear Bumper Fiberglass w/Slide Out Tray For Spare Tire (w/a)

Some features shown in our literature are optional. Colors and finishes are photographic representations and may appear differently when viewing actual materials. Please see your dealer for actual samples and specifications.

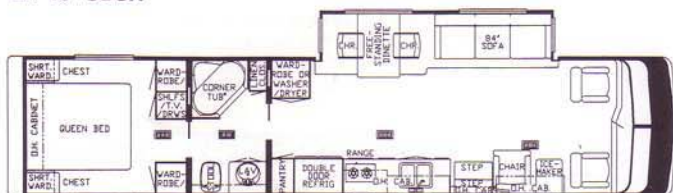




LA 40' CBSA

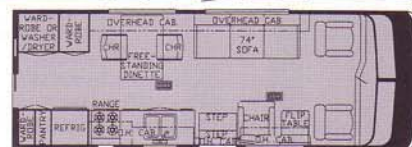


KS 40' WDSK



LA 40' WDSK

C01, 02



C01

C02

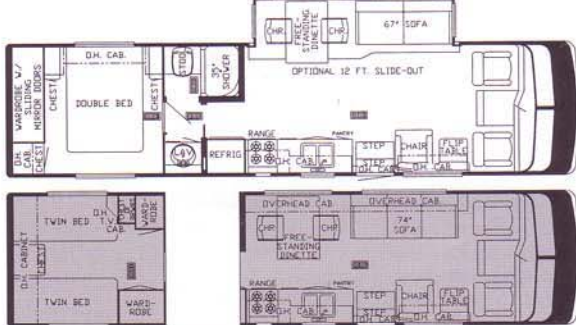
## CLASS A AND DIESEL PUSHER STANDARDS/OPTIONS

DS CA	KS CA	MA CA	KA CA	KS DP	LA DP	RETAIL COST	AIR CONDITIONING, HEATING & LP GAS
O	NA	NA	NA	NA	NA	709	Air Conditioner Brisk Air 13.5 BTU (each)
NA	O	S	S	O	NA	1265	Air Conditioner Central Penguin 13.5 BTU (1)
NA	NA	NA	NA	NA	S		Air Conditioner Central Penguin 13.5 BTU (2)
NA	O	O	O	O	NA	1002	Air Conditioner Central Penguin 13.5 BTU (extra)
O	NA	NA	NA	NA	NA	1000	Air Conditioner Ducted Brisk Air 13.5 BTU (1)
S	S	NA	NA	S	NA		Air Conditioner Prep (w/wiring)
S	NA	NA	NA	NA	NA		Furnace 30M Electronic Ignition (27-31)
NA	S	S	S	NA	NA		Furnace 35M Electronic Ignition (29-34)
NA	NA	NA	NA	S	NA		Furnace 35M Electronic Ignition (32)
S	NA	NA	NA	NA	NA		Furnace 35M Electronic Ignition (34)
NA	S	S	S	NA	NA		Furnace 40M Electronic Ignition (37)
NA	NA	NA	NA	S	S		Furnace 40M Electronic Ignition (38 - 40)
S	S	S	S	S	S		Heat In Floor Ducted
S	S	S	S	NA	NA		LP Gas Tank 15 Gallons
O	O	O	S	S	S	134	LP Gas Tank 32 Gallons
NA	O	O	O	O	S	61	LP Leak Detector
							APPLIANCES & ACCESSORIES
S	S	S	S	S	S		Bath Accessories Brass (1-towel bar, tis hldr, 1-towel ring, 1-robe hook)
NA	NA	NA	NA	NA	S	295	Blender
NA	NA	NA	NA	NA	S		Coffee Maker
NA	NA	NA	NA	NA	S		Faucet For Kitchen Sink Single Handle Hi Rise (chrome)
NA	NA	NA	NA	NA	S		Faucet For Shower & Lavatory Single Handle (gold)
NA	O	O	O	O	S	756	Icemaker (110 volt)
NA	O	O	NA	O	NA	398	Microwave Oven (Sharp 22")
S	NA	NA	NA	NA	NA		Microwave Oven Convection 22" (Sharp) w/2 Burner
NA	NA	NA	NA	NA	S		Hot Plate
NA	NA	NA	NA	NA	S		Microwave Oven Convection 30" (Sharp) w/2 Burner
NA	O	O	S	O	NA	948	Hot Plate
NA	NA	NA	NA	NA	S		Microwave Oven Convection 30" (Sharp) w/4 Burner
NA	S	S	NA	S	NA		Hot Plate
NA	NA	NA	NA	NA	S		Microwave Prep (22" X 15")
NA	S	S	S	S	NA		Portable Vacuum
S	S	S	NA	S	NA	35	Range Cover Bi-Fold
NA	S	S	NA	S	NA		Range Hood w/Light & Fan
NA	NA	NA	O	NA	NA	541	Range Magic Chef 4-Burner w/Oven 18"
NA	NA	NA	NA	NA	S		Refrigerator Dometic Double Door 3804 AES
NA	NA	NA	NA	NA	S		Refrigerator Dometic Double Door 3804 AES (38 models)
NA	NA	NA	NA	O	NA	1964	Refrigerator Dometic Side By Side 7030 (40 models)
S	S	S	NA	S	NA		Refrigerator Dometic Side By Side 7030 (w/a)
NA	NA	NA	S	NA	NA	403	Refrigerator Dometic Side By Side 7030 (w/a)
O	O	O	NA	O	NA	195	Refrigerator Dometic Side By Side 7030 (w/a)
NA	NA	NA	NA	NA	S	478	Refrigerator Dometic Side By Side 7030 (w/a)
NA	O	O	O	S	NA	169	Refrigerator Dometic Side By Side 7030 (w/a)
S	NA	NA	NA	NA	NA		Refrigerator Dometic Side By Side 7030 (w/a)
NA	S	S	S	S	NA	42	Refrigerator Dometic Side By Side 7030 (w/a)
NA	O	O	O	O	S	77	Refrigerator Dometic Side By Side 7030 (w/a)
O	O	O	S	O	S	154	Refrigerator Dometic Side By Side 7030 (w/a)
NA	S	S	S	S	S	221	Refrigerator Dometic Side By Side 7030 (w/a)
O	NA	NA	NA	NA	NA	135	Refrigerator Dometic Side By Side 7030 (w/a)
NA	O	O	O	O	S	277	Refrigerator Dometic Side By Side 7030 (w/a)
NA	NA	NA	NA	NA	O	941	Refrigerator Dometic Side By Side 7030 (w/a)
NA	O	O	O	O	NA	1216	Refrigerator Dometic Side By Side 7030 (w/a)
NA	O	O	O	O	S	155	Refrigerator Dometic Side By Side 7030 (w/a)
S	NA	NA	NA	NA	NA	35	Refrigerator Dometic Side By Side 7030 (w/a)
NA	S	S	S	S	NA		Refrigerator Dometic Side By Side 7030 (w/a)
NA	O	O	O	O	S	215	Refrigerator Dometic Side By Side 7030 (w/a)

DS CA	KS CA	MA CA	KA CA	KS DP	LA DP	RETAIL COST	APPLIANCES & ACCESSORIES
O	O	O	O	O	S	52	Water Heater Bypass Kit
NA	NA	NA	NA	NA	S		Water Heater w/Engine Assist
							CABINETS & FURNITURE
NA	NA	NA	NA	NA	S		Air Mattress
O	S	S	S	S	S	65	Bed Queen (60" X 75")
O	O	O	O	NA	NA	160	Bed Twins (32" X 75") (w/a)
NA	NA	NA	O	NA	S	1281	Cabinetry Cherry Hardwood w/Raised Panel Doors
NA	S	S	S	S	NA	1161	Cabinetry Oak Hardwood w/Raised Panel Doors
NA	NA	NA	NA	NA	O		Cabinetry Oak Hardwood w/Raised Panel Doors
S	NA	NA	NA	NA	NA		Cabinetry Oak w/Hardwood Frame Doors
NA	NA	NA	NA	NA	S		Chair Highback Recliner
NA	NA	NA	NA	NA	S		Corian Countertops Kitchen, & Bath
NA	O	O	O	O	NA	44	Countertop Extension (w/a)
NA	NA	NA	S	NA	S		Drawers w/Metal Guides & Side Rollers
NA	NA	NA	NA	NA	S	79	Hardwood Trim On Entrance Door
S	S	S	S	S	S		Lifts For Convenient Storage Under Fixed Beds
NA	O	O	S	O	S	173	Pull-Out Pantry (w/a)
O	O	O	O	O	NA	509	Seat 6-way Power
NA	NA	NA	S	NA	NA		Seat Driver 6-way Power Swivel & Recliner
NA	NA	NA	O	NA	S	1298	Seat Driver/Passenger 6-way Power Swivel & Recliner
S	S	S	S	S	S		Leather/Vinyl
S	S	S	S	S	S		Seat Driver/Passenger Swivel & Recliner
S	S	S	S	S	S		Snack Tray
							CHASSIS FEATURES
NA	NA	NA	NA	S	S		1000 Watt Engine Block Heater
NA	NA	NA	NA	S	S		Auto Slack Adjuster Front & Rear (38 & up)
NA	NA	NA	NA	S	S		Back-Up Alarm
S	S	S	S	NA	NA		Chassis-Chevy (454 CID Engine) w/Radial Tires w/80 Gal Tank
O	O	O	O	NA	NA		Chassis-Ford (460 CID Engine) w/Radial Tires w/78 Gal Tank
NA	NA	NA	NA	S	NA		Chassis-Spartan 250HP 252"WB w/Radial Tires w/100 Gal Tank (38 models)
NA	NA	NA	NA	S	NA		Chassis-Spartan 190HP 180"WB w/Radial Tires w/60 Gal Tank (32 models)
NA	NA	NA	NA	O	S		Chassis-Spartan 300HP 252"WB w/Radial Tires w/100 Gal Tank (38 models)
NA	NA	NA	NA	S	S		Chassis-Spartan 300HP 276"WB w/Radial Tires w/100 Gal Tank (40 models)
S	S	S	S	S	S		Cruise Control
NA	NA	NA	S	NA	NA		Dash Instruments w/Tachometer & Vacuum Gauge
S	S	S	NA	NA	NA		Heater/Air Conditioner High Output Automotive
NA	NA	NA	S	S	S		Heater/Air Conditioner High Output Automotive
NA	NA	NA	S	S	S		Blend Air
NA	NA	NA	S	NA	S		Intermittent Wipers w/Headlight Convenience Switch
NA	NA	NA	NA	S	S		Pack 8 Exhaust Engine Brake (38 & up)
NA	NA	NA	S	NA	NA		Steering Wheel Custom Simulated Leather (Chevy)
S	S	S	S	NA	NA		Steering Wheel Tilt
NA	NA	NA	NA	S	S		Steering Wheel Tilt & Telescope
NA	NA	NA	NA	S	S		Suspension Self Leveling Air Ride (38 & up)
S	S	S	S	NA	NA		Transmission Cooler Auxiliary

Kountry Star, Mountain Aire and Kountry Aire  
Class A's slideouts are optional features.





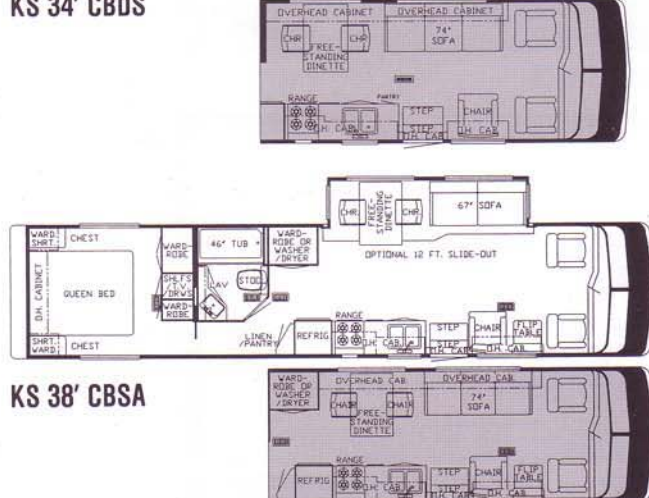
KS/MA/KA 34' WCB

## DIESEL PUSHER

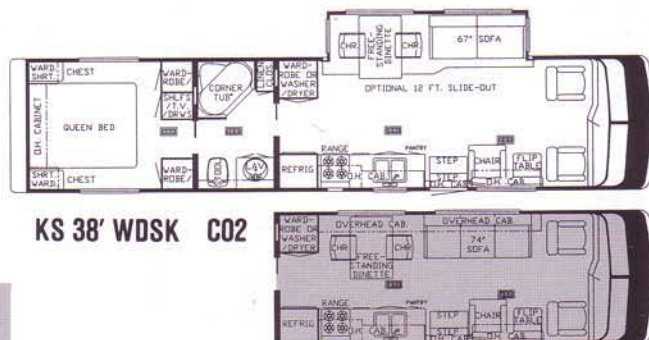


KS 32' CBD

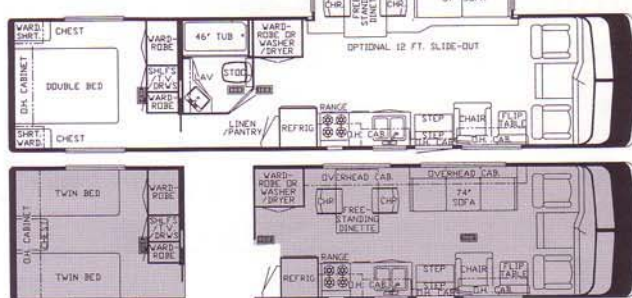
KS 34' CBDs



KS 38' CBSA



KS 38' WDSK C02



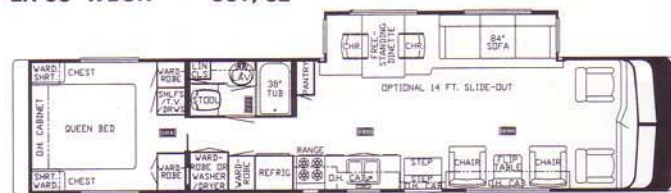
KS/MA/KA 37' CBSA

KS/MA/KA 37' WDSK



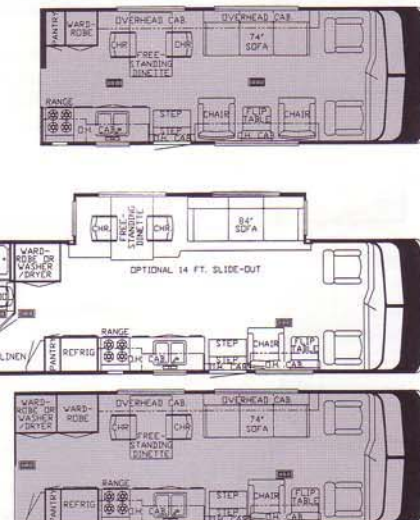
LA 38' CBSA

LA 38' WDSK C01, 02



KS 40' CBD

KS 40' CBSA



Kountry Star, Mountain Aire and Kountry Aire Class A's slideouts are optional features.



DS	KA	RETAIL COST	PLUMBING SYSTEMS
NA	O	90	Sewage Holding Tank Rinse
S	S		Tank Gray Water 25 Gallons (approximate)
S	S		Tank Sewage Holding 25 Gallons (approximate)
S	S		Water Capacity 42 Gallons (approximate)
S	S		Water System Demand w/12V Pump & 5/8" Polybutylene Lines

NA	S	RETAIL COST	RUNNING GEAR & CONSTRUCTION
NA	S		Air Adjustable Helper Springs
NA	S		Floor Decking Plywood
NA	O	323	Hitch For Towing Car w/Wire Connector
S	NA		Insulation Fiberglass R5 Sidewalls & Roof
NA	S		Insulation Fiberglass R7 Sidewalls & Floor R19 Roof
NA	S		Insulation Foam 5/8" Laminated In Sidewalls & Ceiling
NA	S		Skid Bars For Rear Bottom Protection
O	S	353	Spare Tire w/Carrier & Cover

DS	KA	RETAIL COST	RUNNING GEAR & CONSTRUCTION
NA	S		Structure, Aluminum Sidewalls & Roof
S	S		Undercoating
O	S	160	Wheel Covers

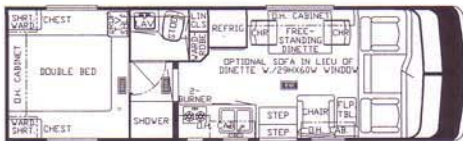
  

O	NA	RETAIL COST	WINDOWS, DOORS, AWNINGS & VENTS
O	NA	826	Awning Side A & E 8500
NA	O	1029	Awning Side A & E 9000
NA	O	209	Skylight In Bathroom w/Soft Shade
NA	O	335	Vent 12V Fantastic 3-Speed w/Power Opener (specify location)
O	NA	36	Vent 12V ILO STD
NA	S		Vent 12V In Bath Area w/Wall Switch
S	NA		Vent Non Power In Bath Area
NA	S		Windows Radius Slider Safety Glass Dark Tinted
S	NA		Windows Square Torque Safety Glass

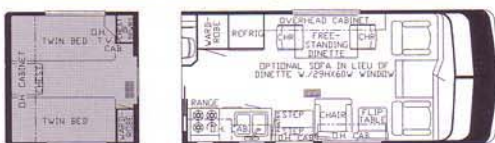
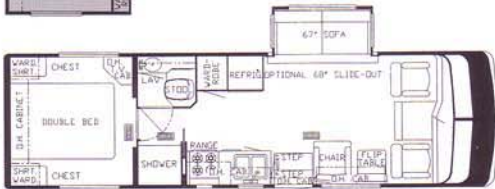
## 1993 Minihome Specifications

MODEL	CHASSIS	ENGINE	DRIVE AXLE RATIO	FUEL CAP. (GAL.)	FRONT GAWR	DRIVE GAWR	TAG GAWR	GVWR	GCWR	UNLOADED VEHICLE WEIGHT	WHEEL BASE	OVERALL			INTERIOR		(GALLONS)			LP GAS (GAL.)
												LENGTH	HEIGHT	WIDTH	HEIGHT	WIDTH	FRESH WATER	GREY WATER	BLACK WATER	
DS 22 RK	CHEVY	350	4.10	33	3,900	7,500	NA	10,500	13,500	8,435	146	22'-0"	10'-6"	96"	83"	91 1/4"	40	23	23	15
DS 24 RB	CHEVY	350	4.10	33	3,900	7,500	NA	10,500	13,500	8,697	146	24'-6"	10'-6"	96"	83"	91 1/4"	40	25	25	15
KA 24 RB	FORD	460	4.10	39	4,200	7,780	NA	11,500	18,500	9,960	158	24'-6"	10'-6"	96"	80"	91 1/2"	40	25	25	15

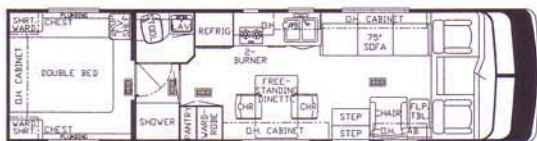
## CLASS A'S



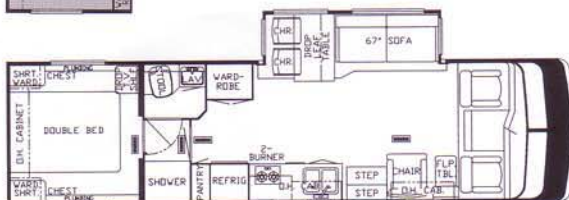
DS 27' WCB



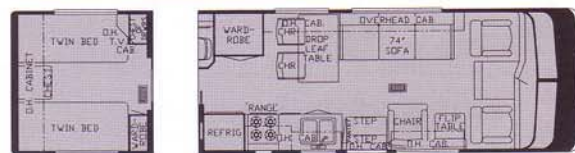
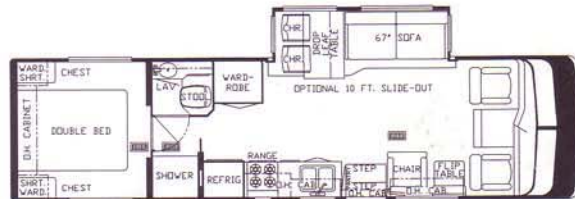
KS/MA/KA 29' WCB



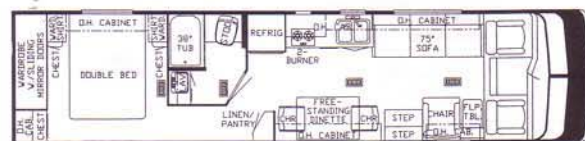
DS 31' CBD



DS 31' CBDS



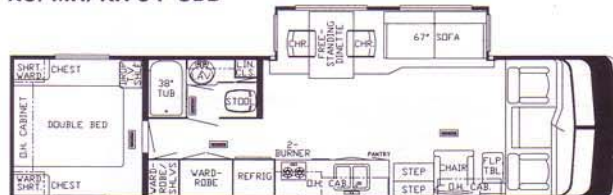
KS/MA/KA 32' WCB



DS 34' SACB



KS/MA/KA 34' CBD



DS 34' CBDS

Kountry Star, Mountain Aire and Kountry Aire Class A's slideouts are optional features.

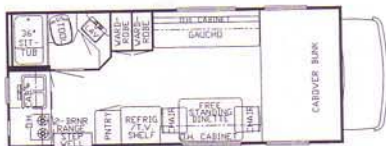


The innovators of the motorhome slideout, Newmar Corporation, offers something for everyone in the motorhome market for 1993. There is a floor plan, size, style and type of coach

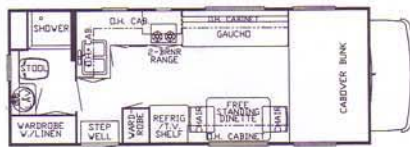
for everyone's taste and budget. The versatility and longevity combined with Newmar's reputation for quality and innovation provide a wide array of

options this year. Join many experienced RVers who have already stepped up to Newmar with this complete list of floor plans and options and wish Newmar a happy Silver Anniversary!

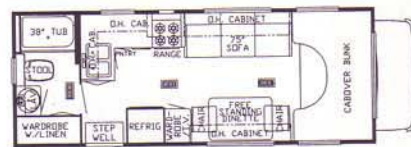
## MINIHOMES



DS 22' RK



DS 24' RB



KA 24' RB

## MINIHOMES STANDARDS/OPTIONS

DS	KA	RETAIL COST	AIR CONDITIONING, HEATING & LP GAS
O	NA	709	Air Conditioner Brisk Air 13.5 BTU (each)
NA	S		Air Conditioner Ducted Penguin Air 13.5 BTU (1)
O	NA	326	Furnace 20M
NA	S		Furnace 25M Electronic Ignition
NA	S		Heat In Floor Ducted
S	S		LP Gas Tank 15 Gallons
NA	O	61	LP Leak Detector

DS	KA	RETAIL COST	APPLIANCES & ACCESSORIES
S	NA		Bath Accessories (1-towel bar 1-tissue holder)
NA	S		Bath Accessories Brass (1-towel bar, tis hldr, 1-towel ring, 1-robe hook)
O	O	398	Microwave Oven (Sharp 22")
NA	O	889	Microwave Oven Convection 30" (Sharp) w/4 Burner Hot Plate
NA	S		Microwave Prep (22" X 15")
NA	S		Range Cover Bi-Fold
S	NA		Range Hood w/Light
O	S	35	Range Hood w/Light & Fan
NA	S		Range Magic Chef 4-Burner w/Oven 22"
O	NA	97	Range Wedgewood 4-Burner Hot Plate
S	NA		Range Wedgewood 2-Burner Hot Plate
S	NA		Refrigerator Silhouette S520
O	NA	238	Refrigerator Silhouette Double Door S620
NA	S	403	Refrigerator Silhouette Double Door S820
S	NA		Stool Aqua Magic IV
NA	S	65	Stool Aqua Magic Starlite w/Spray Attachment
NA	S	154	Tub/Shower Enclosure
NA	S	221	Tub/Shower Fiberglass
O	NA	135	Tub/Shower Surround
NA	O	155	Water Filtering System w/Drink Dispenser (kitchen)
S	NA		Water Heater 3 Gal Gas
O	NA	35	Water Heater 6 Gal Gas
NA	S		Water Heater 6 Gal Gas w/Direct Spark Ignition
NA	O	52	Water Heater Bypass Kit

DS	KA	RETAIL COST	CABINETS & FURNITURE
NA	O	2400	Cabinetry Cherry Hardwood w/Raised Panel Doors
NA	O	1161	Cabinetry Oak Hardwood w/Raised Panel Doors
S	NA		Cabinetry Oak w/Hardwood Frame Doors
NA	S		Drawers w/Metal Guides & Side Rollers
NA	S	173	Pull-Out Pantry (w/a)
NA	S		Snack Tray

DS	KA	RETAIL COST	CHASSIS FEATURES
S	NA		Chassis-Chevy (350 CID Engine) w/Polyester Tires w/35 Gal Tank
NA	S		Chassis-Ford (460 CID Engine) w/Radial Tires w/36 Gal Tank
S	S		Cruise Control
S	S		Heater/Air Conditioner High Output Automotive
NA	S		Power Window & Door Locks Driver & Passenger
S	S		Steering Wheel Tilt

DS	KA	RETAIL COST	ELECTRICAL & LIGHTING EQUIPMENT
S	S	133	Battery 115 AMP Sears DieHard Deep Cycle
NA	O	339	Battery Disconnect
NA	O	304	CB Radio
S	NA		Converter 15 AMP
NA	S		Converter 50 AMP w/Charger
S	NA		Electrical Service 15 Amp
NA	S		Electrical Service 30 AMP
O	NA	362	Electrical Service 30 AMP Package
NA	O	221	Electrical Service 50 AMP
NA	O	2625	Gen 4.0 KW Onan w/1 Remote Switch
O	NA	244	Gen Prep (110 V/wire, remote start wire & door)(w/a)
NA	S		Gen Prep (auto changeover, 110V wire, remote start wire)
NA	O	40	Light Exterior Security (each)(specify location)
NA	S	406	Lighting Fluorescent Recessed In Ceiling
NA	S		Lights In Wardrobe w/Automatic Switches
NA	S		Lights Interior Courtesy
S	S		Lights in Exterior Storage Compartments
O	S	178	Monitor Panel
S	S		Recept 110V GFI (interior & exterior)
NA	S	334	Stereo AM/FM Cassette w/Clock
S	NA	167	Stereo AM/FM Cassette
NA	O	65	Switch For Emergency Chassis Engine Start
O	S	193	TV Antenna w/Power Booster & 2 Jacks
NA	S		TV Cable Hookup
NA	O	400	TV Color 13" AC w/Remote Control
NA	O	44	TV Jack Exterior On Door Side
NA	O	44	Telephone Jack Interior (each)(specify location)
NA	O	83	VCR Prep

DS	KA	RETAIL COST	EXTERIOR FEATURES
NA	S	37	Bumper Cover Aluminum
S	NA		Bumper w/Sewer Hose Storage
NA	S		Exterior Front & Rear Gel-Coated Fiberglass End Caps
NA	S		Exterior Sides Gel-Coated Fiberglass
S	NA		Roof One Piece Aluminum
NA	O	180	Roof Rack & Ladder
NA	S	17	Roof Rubber (per ft)

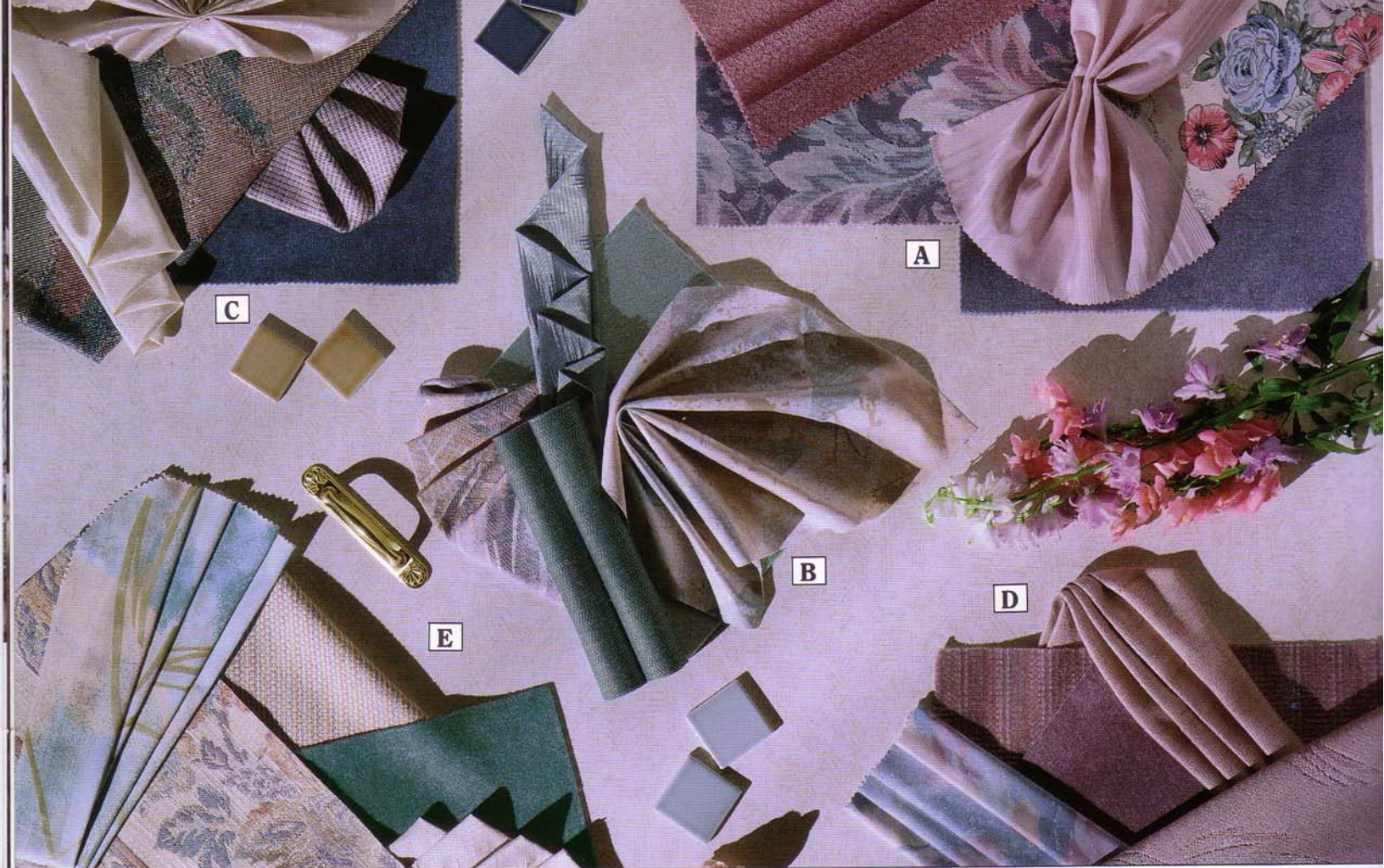
DS	KA	RETAIL COST	INTERIOR FEATURES
NA	S		Ceiling Woven Soft Touch
NA	S		Decorative Clock
NA	S		Floor Covering, Carpet w/High Density Pad Throughout
O	NA	159	Floor Covering, Carpet w/Pad Throughout
S	NA		Floor Covering, Vinyl In Kitchen, Bath & Living Room
NA	S		Sink Covers Two
S	S		Smoke Detector & 5# Fire Extinguisher
O	O		State Seal
NA	S		Waste Basket & Convenience Light In Kitchen
NA	S		Window Treatmt Day/Night Soft Shades, Lamberquins
NA	S		Window Treatmt Mini Blinds (kitchen & bath)
S	NA		Window Treatmt Mini Blinds (throughout)

DS	KA	RETAIL COST	PLUMBING SYSTEMS
NA	O	225	Heat Pads for Holding Tanks 110V









### London Aire

- A** LA3-162 Blue Diamond
- B** LA3-163 Rainbow Pearl
- C** LA3-164 Opal Swirl
- D** LA3-165 Misty Garnet
- E** LA3-166 Haze Topaz

### Kountry Aire

- A** KA3-157 Blue Diamond
- B** KA3-158 Rainbow Pearl
- C** KA3-159 Opal Swirl
- D** KA3-160 Misty Garnet
- E** KA3-161 Haze Topaz

### Mountain Aire

- F** MA3-152 Sunset Blue
- G** MA3-153 Orchid Shadows
- H** MA3-154 Teal Frost
- I** MA3-155 Almond Blossom
- J** MA3-156 Crystal Blue

### Kountry Star

- F** KS3-147 Sunset Blue
- G** KS3-148 Orchid Shadow
- H** KS3-149 Teal Frost
- I** KS3-150 Almond Blossom
- J** KS3-151 Crystal Blue

### Dutch Star

- K** DS3-137 Rose Petal
- L** DS3-138 Cove Blue
- M** DS3-139 Golden Sand
- N** DS3-140 Alpine Blue
- O** DS3-141 Autumn Rose
- P** EC3-134 Rose Mist
- Q** EC3-135 Plum Starlight
- R** EC3-136 Electric Blue





In light of all the so-called "luxury, high-end coaches" available out there, the Kountry Star Class A shown here with the large slideout has all the grandeur of these, but with a much more attractive price tag. The optional rich parquet floor adds luster to this spacious and exquisitely designed coach. The selective use of quality hardwoods and fabrics paralleled with top name components and appliances yields an environment that is not only inviting, but offers all the elements needed to enjoy RVing in complete comfort.



The privacy, comfort and dual purpose of the Hide-a-Bed speaks for itself. Handy pleated shades in the cockpit area plus the residential-style horizontal day/night shades on the remaining windows locks out the outside when you want privacy.





This delightful, affordable minihome from Dutch Star was created for those small weekender families and sport enthusiasts. It's a nice substitute for vans because you have cooking, sleeping, storage and bathroom capabilities not possible with the van. Extended trips are also a joy because of the ease of handling.

### Composite "R" Factors

	KS	DS MINI	DS CA
Sidewall	9	6	9
Roof	9	6	9
Floor	8	2	8

The highlight of the Star line this year is the Kountry Star Diesel Pusher. It has all the features and options available on our front engine motorhomes. Pushers provide more power for better handling, quieter interiors and more living and storage space than our conventional Class As. These full-scale coaches run from 32' to 40' and are powered by Cummins 190, 250 and 300 horsepower diesel engines.



The shortest pusher offered is the 32'. This unit has a Spartan EC 2000 series chassis, a 190 hp Cummins engine and the Allison AT 542 transmission. At the top end of this spectrum are the 40' pushers. They are powered by a Cummins 300 hp diesel with the Allison World MD 3060 electronic shift transmission and ride on the premium Spartan Mountain Master Series chassis. For midrange diesel motorhomes, Kountry Star Pushers yield all the power and ease of operation available in their price range. Add to this a wheelbase of 276-inches, fresh water capacity of approximately 115 gallons and a gross vehicle weight rating of 26,000 pounds, and you have a formidable luxury dwelling on wheels. Great for the long haul!



# STAR MOTORHOMES



The 1993 lineup of Star motorhomes is better than ever this year. From the entry-level Dutch Star minihomes and Class A motorhomes to the elegant Kountry Star Pusher, Newmar offers a motorhome to fit your budget and needs. Regular motorhomes are radically different from towables. Not only because they are self-contained with their own power, but also because of their size and space limitations when using a chassis versus a frame.

It's no surprise that Newmar overcame many of these barriers with a proven ability for innovative engineering that works in the field. Having pioneered the only motorhomes with slideouts, these Stars provide so much living area that it is difficult to believe you're in a motorhome. Whether you're in the minihome market for the small group or family, or a live-in full scale Class A or diesel pusher, the preeminence of space, convenience and comfort hold true and are the hallmarks of Newmar's reputation.

The classic Newmar style is evident in this Dutch Star Class A. If you're traveling to a ball game, driving on extended trips, or docked for the night in your favorite camping area, this coach will comfortably handle your needs. There are plenty of overhead cabinets, abundant room for cooking, sitting and sleeping in luxury not common to an entry-level coach such as this, and most Star motorhomes come equipped with the popular Hide-a-Bed feature. New for 1993, the space enhancing slideout feature previously available only in the larger Newmar motorhomes is now available on some smaller floor plans.







The sleek exterior styling on the London Aire Diesel Pusher is very attractive. The molded-in, aerodynamic contours of the lower wrap, bumpers and fenders create good ground effects for better handling, and yet give the London Aire a luxury sport appearance.



You can quickly put a hand on everything you need whether on the road or in the campsite with these large, slideout storage trays. They function smoothly and make loading and unloading a breeze. The compartments, when closed, are weatherproof to protect your belongings, too.



The molded-in ladder is not only more eye appealing, but is much stronger and safer than externally mounted ladders. Newmar also incorporates a discreet, yet very functional step pocket in the bumper for ease of climbing.



Composite "R" Factors			
	LA	KA	MA
Sidewall	11	11	9
Roof	24	24	9
Floor	10	10	8

Calculated with fiberglass exterior sidewall





Say goodnight and retire in complete comfort and style in this typical London Aire Class A bedroom. All the comforts of home are built into every London Aire we manufacture and the bedrooms are no exception. Pleasant dreams!

***"Newmar has a reputation for being an innovator when it comes to RV design . . . You can always expect to see something rather spectacular from this company."***

**Don Magary  
Family Motor Coaching**







No words can describe the new London Aire Diesel Pusher other than full-scale elegance. Bathe yourself in luxury as you tour the living area pictured above and on the cover. This is Newmar's finest and we're certainly proud of it. Every piece of fabric, leather, wood, brass, glass, appliances and components (and the list goes on) are hand selected and diligently inspected before they are allowed to be a part of this motorhome. Matched grain cherry hardwood in the cabinetry and the new planked flooring give this coach an ambiance of warmth, brilliance, and distinction.

Details like brass fixtures and pulls, beveled plate glass mirrors, etched and leaded glass, Corian countertops, and ceramic tile bathroom floors with roomy, corner tubs all play a role in making the London Aire Class A Diesel Pusher the most beautiful and best valued motorhomes available in the high end market. The huge slideout, up to 14' long, creates so much more room in the living area, that you have to look for the cockpit as a reminder that you're inside a motorhome.





The London Aire Pusher comes in two popular lengths, 38- and 40-foot-long, with either the side aisle or walk through bath floor plans offered in either length. These units are built to handle the steepest mountain terrain in absolute comfort, with ease of handling and power to spare. The 38' model has a 252-inch wheelbase while the 40' coach delivers a full 276-inch wheelbase. Both motorhomes come standard with the 300 horsepower Cummins diesel engine, an Allison World MD 3060 electronic shift transmission and the specially ordered premium Spartan Mountain Master chassis.

With 26,000 pound gross vehicle weight rating, it's easy to understand why these coaches are gaining in popularity with RVers who travel extensively. When you have a unit with built-in capacities as mentioned, your time on the road without needless stops is greatly increased along with the pleasure of driving an RV that's designed for this type of travel. The London Aire Diesel Pusher is just one more part of Newmar's absolute dedication to RVers everywhere.



A kitchen area like this one in the London Aire Pusher is usually seen only on the cover of residential style magazines, but thanks to Newmar's exquisite taste and experienced engineers, it's available to our customers on wheels. It's a well-lit, spacious galley with contemporary appliances, hardwood cherry cabinets and planked floor, Corian countertop and large domestic style side-by-side refrigerator. Imagine yourself preparing a gourmet meal for your guests in this richly appointed setting.



This ingenious automatic coffee maker is an important convenience. It puts your work at eye-level and frees your countertops for other important items. Another Newmar distinctive feature.

Food items aren't this organized in most homes. This pullout pantry feature makes very resourceful use of valuable space. When unexpected friends drop by and you're in a flurry to prepare snacks or meals, the pullout pantry puts everything at your fingertips.







This Kountry Aire Class A bedroom is a vehicle for the designer's art. Carefully chosen and matched fabrics compliment the warm complexion of the cherry cabinetry. Brass lamps and beveled mirrors add an impasto of quality. The lambrequins lend a stately, yet homey touch to this classical Newmar product. The built-in nightstands are very handy for clocks, water glasses, nighttime reading materials, medicines or incidentals. Matching bedspread and pillow shams on a queen size bed top off this charming room.



The rear spoiler with recessed backup/floodlights are standard on the Kountry Aire Class A.



For those who prefer the minihome over the larger Class A type motorhomes, Kountry Aire still offers you one of the finest and most luxurious in the industry today. These units incorporate the same high grade fabrics, materials and appliances as their bigger cousins, only in a scaled down version. The same attention is paid to space, storage and comfort and the mini maintains that classic Kountry Aire quality and look.

The Mountain Aire Class A originated as a medium-priced high-end unit in between the Kountry Star and the Kountry Aire. This price bracket gives our customers an opportunity to step up into the exclusive family of fine Aire quality and standard features without the full high-end price tag. Mountain

Aire has its own distinct look via the exterior color graphics package and many of the standard features available in Kountry Aire. Newmar tries to fill all the needs of its customers, and the Mountain Aire is another fine product used in achieving this goal.





# AIRE MOTORHOMES



**T**he Aire motorhomes for 1993 are more spectacular than ever before. There are three brands to choose from, Mountain Aire, a moderately priced high-end product, the ever-popular Kountry Aire and the exclusively luxurious London Aire Diesel Pusher. The variety of styles, chassis, engines and floor plans to choose from make shopping for motorhomes at a Newmar dealership a one-stop shop. The Aires are a complete line of motorized products from minihomes to conventional front engine to diesel pusher Class As.

Unmatched beauty, quality and dependability are what this

line was founded on, and 1993 is no exception to these convictions. One look at the Kountry Aire 37 WDSK living area above, and you'll understand what all the excitement is about. Newmar is the innovator of the "Motorhome Slideout," and that one facet alone enables these units to stand out beyond the rest. Available luscious cherry hardwoods, painstakingly designed and professionally coordinated interiors and space, space, space, make these coaches unique in this industry. No one knows slideouts like Newmar, and no one puts them to more practical and functional use.







# KOUNTRY STYLE MOTORHOMES CONTENTS

Volume VII

1993 Model Year

About the cover . . . The London Aire Diesel Pusher is full-scale elegance.

## Features

AIRE MOTORHOMES	3
STAR MOTORHOMES	9
INTERIOR COLORS	12
FLOOR PLANS	14



### Kountry Star — \*2 Year Limited Warranty on Superstructure

Newmar Corporation warrants the Superstructure which includes the following: the Frame; the Aluminum Framing in the Sidewalls and Roof. If any part of the Superstructure fails to perform properly within 2 years from the date of purchase because of faulty workmanship or materials supplied by Newmar, during the ownership of the original buyer, it will be repaired without charge for either parts or labor by Newmar providing the proper claim procedures are followed. All other items excluding the Superstructure are covered under the standard Newmar 1 Year Limited Warranty. See Owner's Manual for details.

### Kountry Aire and Mountain Aire — \*5 Year Limited Warranty on Superstructure

Newmar Corporation warrants the Superstructure which includes the following: the Frame; the Aluminum Framing in the Sidewalls and Roof. If any part of the Superstructure fails to perform properly within 5 years from the date of purchase because of faulty workmanship or materials supplied by Newmar, during the ownership of the original buyer, it will be repaired without charge for either parts or labor by Newmar providing the proper claim procedures are followed. All other items excluding the Superstructure are covered under the standard Newmar 1 Year Limited Warranty. See Owner's Manual for details.

### London Aire — \*Lifetime Limited Warranty on Superstructure

Newmar Corporation warrants the Superstructure which includes the following: the Frame; the Aluminum Framing in the Sidewalls and Roof. If any part of the Superstructure fails to perform properly because of faulty workmanship or materials supplied by Newmar, during the ownership of the original buyer, it will be repaired without charge for either parts or labor by Newmar providing the proper claim procedures are followed. All other items excluding the Superstructure are covered under the standard Newmar 1 Year Limited Warranty. See Owner's Manual for details.

All other products are covered by the standard Newmar 1 Year Limited Warranty. See Owner's Manual for details.

## STAFF

Publisher	Mahlon Miller
Editor	Virgil Miller
Art Director	Jimmy Long
Coordinator	Steve Crane
Copywriter	Jim Eikenberry
Photographer	Dave Hugus
Stylist	Bonnie Hoffer
Printer	Ann Robbins



Newmar Corporation has been helping America relax in style for 25 years. Our tradition of elegance began when the first Kountry Aire was designed in 1967. Since then, we've grown from tipouts to slideouts, from one brand to six, and from manufacturing only towables to producing Minihomes, Class A's and Diesel Pushers as well as Travel Trailers and Fifth-Wheels.

As our life has changed over a quarter century, so has America . . . in 25 years, our nation has grown from households with one TV set (often black and white) to full-blown color screens complete with VCR's and satellite dishes. We've watched a man walk on the moon. Technology has advanced to the point that computers have become household mainstays. And our lives have become so fast-paced that we've replaced personal banking with automatic teller machines, and homemade chicken soup with microwave boiling bags.

At Newmar, we've used technology to the fullest. Our innovations, such as perfecting the large slideout, have earned us industry-wide recognition as a manufacturer delivering the highest standards in the RV industry.

And while it's important to us to stay on the cutting edge of technology, some things at Newmar will always stay the same. Things like our traditions of elegance, comfort and quality. Newmar still constructs each recreational vehicle with the old-world craftsmanship and attention to detail that has become our hallmark.

At Newmar, we're proud of the past 25 years and our sincere dedication to our customers. As we celebrate, we intend to keep serving you and providing you with the best products possible. Afterall, you're the reason we're in the business.

**Newmar Kountry Klub**

Don't forget to check out the Klub . . . the Newmar Kountry Klub, that is. All you need to be eligible is to be the proud owner of any one of the fine Newmar recreational vehicles.