

# KOUNTRY STYLE

A publication of Newmar Corporation

Aires, 1994 Model Year



LONDON AIRE

KOUNTRY AIRE • MOUNTAIN AIRE







Begin your tour of America's great outdoors with a trip through the doors of Newmar in Nappanee, Indiana. You're invited to tour our plant weekdays 10 a.m. and 2 p.m. E.S.T. and learn firsthand how a Newmar RV, which embodies the principles of design innovation, old-world craftsmanship and uncompromising quality control, results in a world-class product.

You'll see how an RV is designed and built by people who are themselves experienced RVers. Their sole purpose, one they'll be glad to explain personally, is to ensure that your RV is as durable and dependable years down the road as it is the day it leaves Nappanee. You can't miss us, we're just off U.S. 6 west of town. We'll be looking forward to seeing you and welcoming you inside a company that is setting standards and initiating trends throughout the industry — Newmar Corporation.

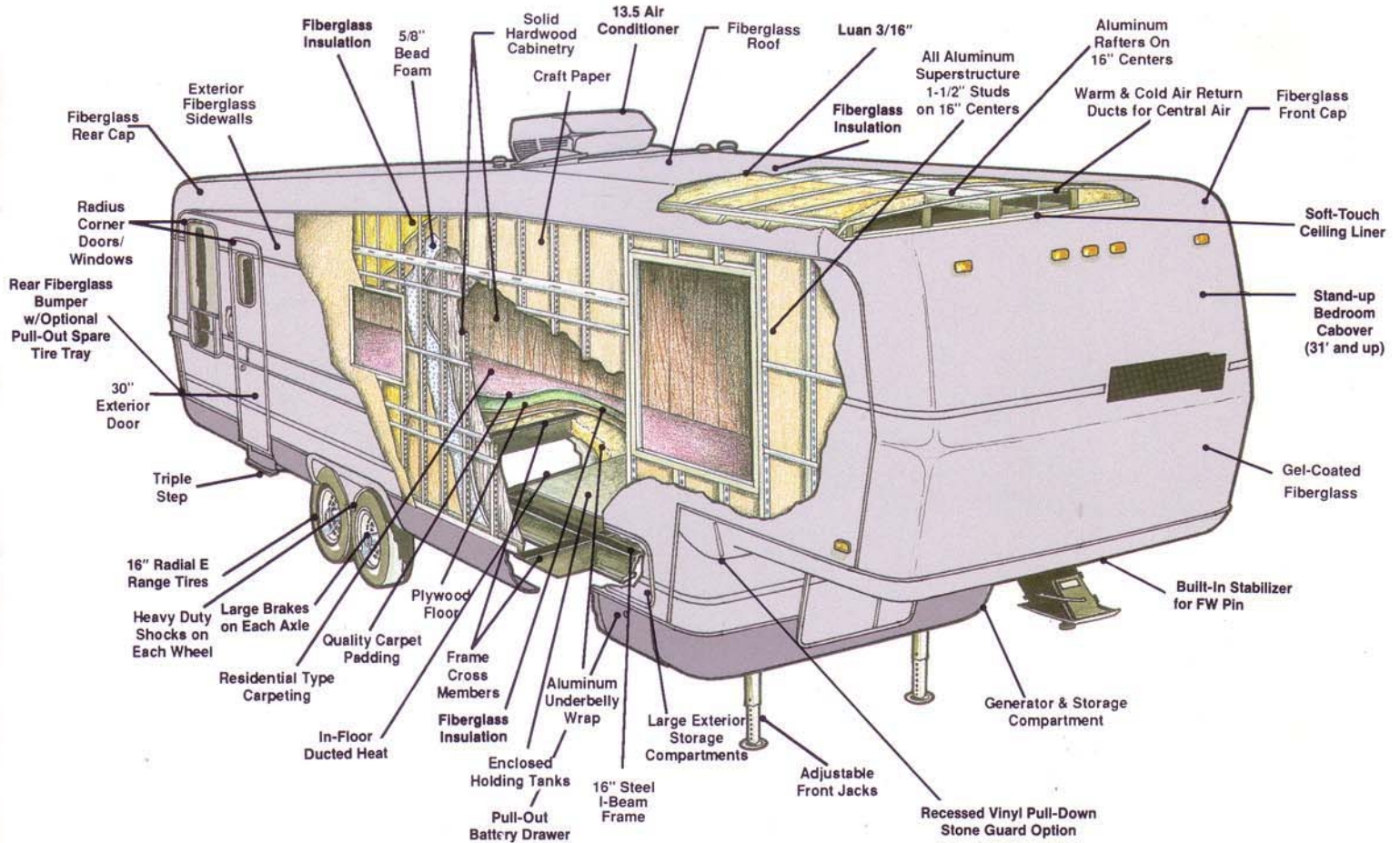


355 N DELAWARE ST  
P O BOX 30  
NAPPANEE IN 46550-0030  
(219) 773-7791 FAX (219) 773-2895

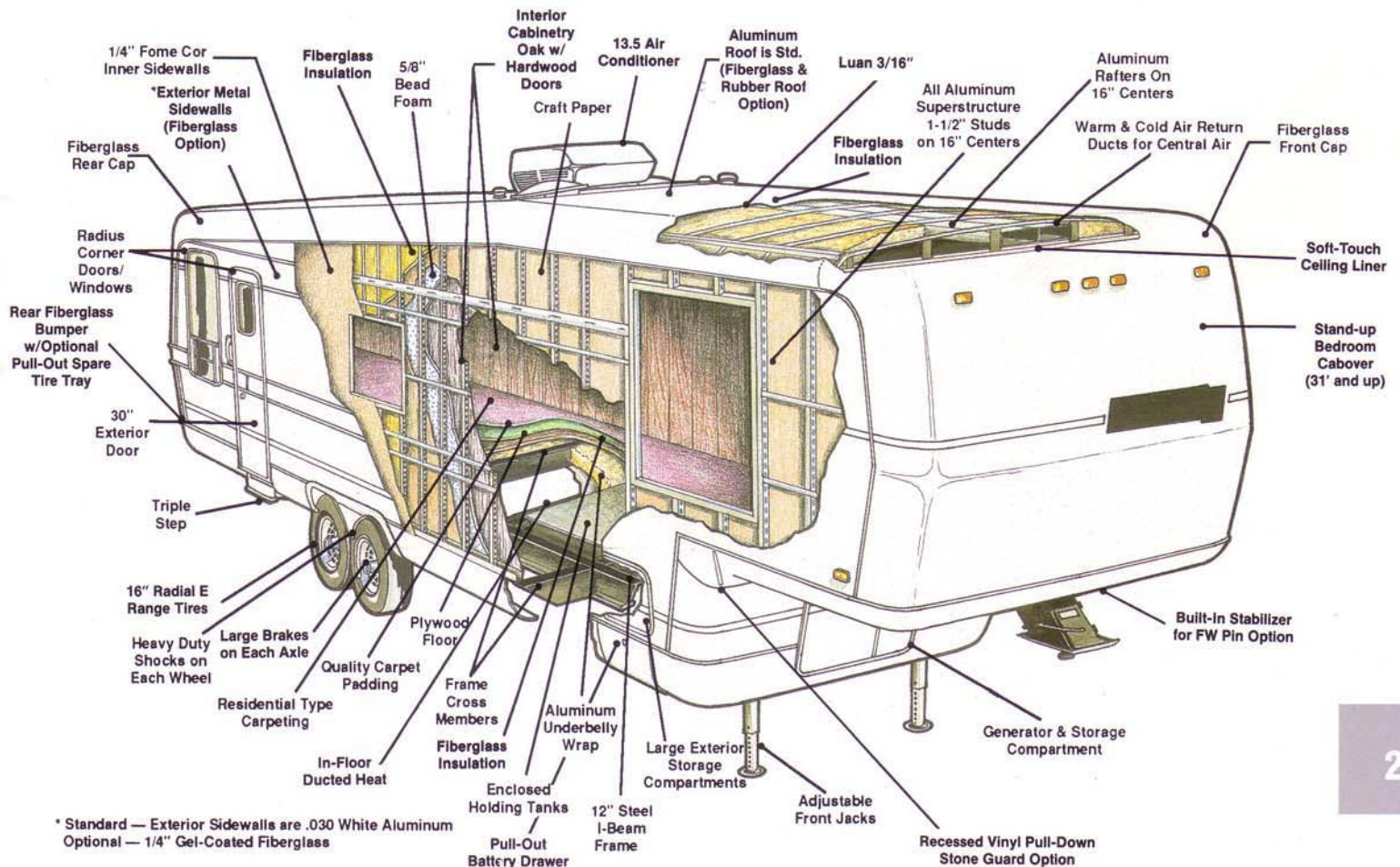
Scheduled plant tours Monday - Friday

Prices and specifications are subject to change at Newmar's discretion without written notice or obligation.





## Kountry Aire and Mountain Aire Design 5 Year Limited Warranty on Superstructure



\* Standard — Exterior Sidewalls are .030 White Aluminum  
Optional — 1/4" Gel-Coated Fiberglass



MA	KA	LA	RETAIL COST	PLUMBING SYSTEMS
S	S	S	90	Insulated Holding Tanks
O	O	S		Sewage Holding Tank Rinse
S	S	S		Water & Holding Tanks
S	S	S		(see specifications chart for capacity) Water System Demand w/12V Pump & 5/8" Polybutylene Lines
RUNNING GEAR & CONSTRUCTION				
S	S	S	4347	Winterize Convenience Package (w/water heater bypass)
S	S	S		E-Z Lube Axles
S	S	S		Floor Decking, Plywood
S	S	NA		Frame, Size 12" I-Beam w/Pull Out Storage & Battery Drawers
NA	O	S	286	Frame, Size 16" I-Beam w/Fiberglass Wrap & Maximum Storage
NA	S	S		Insulation, 1/4" Foam Board Exterior Roof
S	S	NA		Insulation, 1/4" Foam Board Exterior Sidewalls (w/metal sides)
S	NA	NA		Insulation, Fiberglass R7 Sidewalls & Floor, R10 Roof
NA	S	S	613	Insulation, Fiberglass R7 Sidewalls, R19 Floor & Roof
S	S	S		Insulation, Laminated 5/8" Foam In Sidewalls & Ceiling
O	O	NA		Jack, 12V Powered
NA	NA	S		Jack, 12V Powered, Independent Motors & Switches
S	S	S	224	Jacks, Stabilizer (1 pair)
O	O	O		Jacks, Stabilizers, 12V Power Twins A & E (set of 2 ILO std)
S	S	S		Radial Tires (see specifications chart for size & rating)
S	S	S		Rear Bumper, Fiberglass w/Slide Out Tray For Spare Tire (w/a)
S	S	S	219	Shock Absorbers
S	S	S		Skid Bars For Rear Bottom Protection
O	O	S		Spare Tire
O	O	S		Stabilizer For Fifth Wheel Pin (built-in)

MA	KA	LA	RETAIL COST	RUNNING GEAR & CONSTRUCTION
S	S	S		Structure, Aluminum Sidewalls & Roof
NA	NA	S		Structure, Contoured Sidewalls w/Recessed Belt Line
O	O	S	1416	Structure, Wide Body
O	O	NA	396	Suspension, Mor Ryde (per axle)
S	S	NA		Suspension, Triple Axle (36 & up)
NA	NA	S		Suspension, Triple Axle, Mor Ryde
S	S	S		Underbelly, Enclosed Aluminum w/Laminated 5/8" Foam
NA	NA	S		Wheels, Polished Aluminum
WINDOWS, DOORS, AWNINGS & VENTS				
O	O	NA	251	Awning, Rear Recessed In Fiberglass End Cap (w/a)
NA	NA	S		Awning, Rear Recessed w/12V Powered Operation (w/a)
O	NA	NA	825	Awning, Side A & E 8500
NA	O	S	1028	Awning, Side A & E 9000
O	O	O	94	Awning, Side Tension Rafter
O	NA	NA	144	Awning, Window A & E 8500 (per window) (specify location)
NA	O	O	208	Awning, Window A & E 9000 (per window) (specify location)
NA	O	S	39	Door Bell
NA	NA	S		Door Stop, Auto Flush Recessed (1)
S	S	S		Entrance Door Stepwell Tread Liner
NA	S	S		Exterior Lighted Acrylic Assist Handle (at main entrance door)
S	S	S		Radius Entrance Door w/Deadbolt & Lighted Step
O	O	S	210	Skylight In Bathroom w/Soft Shade
O	O	O	335	Vent, 12V Fantastic 3-Speed w/Power Opener (specify location)
S	S	S		Vent, 12V In Bath Area w/Wall Switch
O	O	O	59	Window Glass, Dark Tinted & Safety (each)
O	O	O	222	Window, Picture 48X48 (door side of cabover)
S	S	S		Windows, Radius Torque
O	O	O	91	Windows, Safety Glass Storms (each)

## INTERIOR DECOR PACKAGES

MA4-180	Teal Frost
MA4-181	Orchid Shadows
MA4-182	Cream Beige
MA4-183	Crystal Blue
MA4-184	Sky Cloud
KA4-185	Blue Diamond
KA4-186	Opal Swirl
KA4-187	Haze Topaz
KA4-188	Teal Mist
KA4-189	Royal Garnet
LA4-190	Blue Diamond
LA4-191	Opal Swirl
LA4-192	Haze Topaz
LA4-193	Teal Mist
LA4-194	Royal Garnet

## "R" Factor Values

	London Aire	Kountry Aire	Mountain Aire
Sidewall	11	12	12
Roof	24	24	14
Floor	24	24	12

Some features shown in our literature are optional. Colors and finishes are photographic representations and may appear differently when viewing actual materials. Please see your dealer for actual samples and specifications.

**A&E Systems®**  
by Dometic

**DUO-THERM**  
by Dometic

**Dometic®**  
Our goal... your satisfaction.

**Newmar Kountry Klub**

Don't forget to check out the Klub...the Newmar Kountry Klub, that is. All you need to be eligible is to be the proud owner of any one of the fine Newmar recreational vehicles.



MA	KA	LA	RETAIL COST	APPLIANCES & ACCESSORIES
S	NA	NA		Refrigerator, Dometic Double Door 2607.2
O	S	NA	195	Refrigerator, Dometic Double Door 2807.2
NA	O	NA	566	Refrigerator, Dometic Double Door 3807.3 AES
NA	O	S	1958	Refrigerator, Dometic Side By Side 7030.2 (w/a)
O	NA	NA	2214	Refrigerator, Dometic Side By Side 7030.2 (w/a)
S	S	S		Refrigerator, Front Hardwood Raised Panel
NA	O	O	319	Shower Corner w/Full View Clear Glass Door (w/a)
O	NA	NA	673	Shower Corner w/Full View Clear Glass Door (w/a)
S	NA	NA		Stool, Aqua Magic IV
O	S	S	128	Stool, China w/Spray Attachment
S	S	S		Tub/Shower Ceiling Light
S	NA	NA		Tub/Shower Enclosure
O	NA	NA	221	Tub/Shower, Fiberglass
NA	S	S		Tub/Shower, Fiberglass w/Enclosure
S	NA	NA		Tub/Shower Surround
O	O	O	360	Washer/Dryer Prep w/Floor Drain Pan & Louver Cabinet Doors (w/a)
O	O	O	1303	Washer/Dryer, Sears w/Floor Drain Pan, Pull Out Shelf & Louver Cab Doors (w/a)
O	O	S	155	Water Filtering System w/Drink Dispenser (kitchen)
S	NA	NA		Water Heater, 6 Gal. Gas
NA	O	S	218	Water Heater, 10 Gal. Gas/Electric w/Direct Spark Ignition
O	NA	NA	395	Water Heater, 10 Gal. Gas/Electric w/Direct Spark Ignition
O	S	NA	243	Water Heater, 10 Gal. Gas/Electric w/Reigniter

#### CABINETS & FURNITURE

NA	NA	S		Air Mattress
S	S	NA		Bed, Queen (60" X 75")
NA	NA	S		Bed, Queen (60" x 80")
O	O	NA	160	Bed, Twins (32" X 75")(w/a)
NA	O	NA	2120	Cabinetry, Bleached Oak Hardwood
NA	NA	O		Cabinetry, Bleached Oak Hardwood
NA	O	S	2400	Cabinetry, Cherry Hardwood w/Raised Panel Cathedral Doors
NA	NA	O		Cabinetry, Oak Hardwood
NA	O	NA	1161	Cabinetry, Oak Hardwood
S	S	NA		Cabinetry, Oak w/Raised Panel Cathedral Doors
O	O	S	553	Chair, Flexsteel Swivel Glider Recliner w/Foot Rest
NA	NA	O	553	Chair, Flexsteel Swivel Glider Recliner w/Foot Rest (additional)
O	O	NA	362	Chair, Swivel Rocker
O	O	NA	491	Chair, Swivel Rocker Recliner w/Foot Rest
NA	NA	S		Corian Countertops, Kitchen & Bath
O	O	NA	44	Countertop Extension (w/a)
NA	S	S		Drawers w/Metal Guides & Side Rollers
O	O	S	79	Hardwood Trim On Entrance Door (each)
O	NA	NA	138	Hidden Leaf Dinette Table ILO Free Standing Table
NA	O	O	62	Hidden Leaf Dinette Table ILO Free Standing Table
O	O	NA	270	Honeymoon Suite Bedroom (w/a)
NA	S	S		Lazy Susan (w/a)
S	NA	NA		Leaded Glass Accent Door w/Mood Lighting
NA	S	S		Leaded Glass Beveled Accent Door w/Mood Lighting
S	S	S		Lifts For Convenient Storage Under Fixed Beds
S	S	S		Molded Silverware Divider Tray
O	S	S	174	Pull Out Pantry (w/a)
S	NA	NA		Sofa, Flexsteel Magic Bed
NA	S	S		Sofa, Flexsteel Magic Bed w/Fold Out Snack Trays
O	O	O	364	Sofa Storage Cabinet (w/a)
NA	NA	S		Tables, Cocktail & Chair
NA	NA	O	1201	Vanity Center

#### ELECTRICAL & LIGHTING EQUIPMENT

S	S	NA		Battery, 125 AMP Thermoil
NA	NA	S		Battery, 125 AMP Thermoil (2)
O	O	NA	124	Battery, 125 AMP Thermoil (extra)
O	O	O	146	Ceiling Fan (w/a)
S	S	S		Converter, 50 AMP w/Charger
S	NA	NA		Electrical Service, 30 AMP
O	S	NA	221	Electrical Service, 50 AMP
NA	NA	S		Electrical Service, 50 Amp w/Flexible Cord
NA	NA	O	4611	Gen., 6.5 KW Onan On Slides w/1 Switch, Auto C/O, Battery & Carbon Monoxide Detector
O	O	NA	4471	Gen., 6.5 KW Onan w/1 Switch, Auto Changeover, Battery & Carbon Monoxide Det.

MA	KA	LA	RETAIL COST	ELECTRICAL & LIGHTING EQUIPMENT
O	O	O	490	Gen., Prep (auto c/o, 12V cable, remote start wire & carbon monoxide detector)
O	O	O	40	Light, Exterior Security (each)(specify location)
O	S	S	406	Lighting, Fluorescent Recessed In Ceiling
NA	NA	S		Lights In Exterior Storage Compartments
S	S	NA		Lights In Raised Bath Floor Storage Area
S	S	NA		Lights In Wardrobes
NA	S	S		Lights In Wardrobes w/Automatic Switches
NA	NA	S		Lights, Interior Courtesy
NA	S	S		Midship Side Turn Signal Lights
S	S	S		Monitor Panel
S	S	S		Recepts, 110V GFI (interior & exterior)
S	S	NA		Stereo, AM/FM Cassette w/Clock
NA	NA	S		Stereo, AM/FM Cassette w/Clock & Graphic Equalizer
S	NA	NA		TV Antenna Prep (wire, shelf & 2 jacks)
O	S	S	193	TV Antenna w/Power Booster & 2 Jacks
S	S	S		TV, Cable Ready
NA	NA	S		TV, Color 19" AC w/Remote Control
O	O	S	44	TV Jack, Exterior On Door Side
O	O	S	63	TV Video Switch
NA	NA	S		Telephone Hookup w/1 Jack
O	O	O	44	Telephone Jack Interior (each)(specify location)
NA	NA	S		VCR
O	O	NA	83	VCR Prep

#### EXTERIOR FEATURES

S	S	S		Exterior Front & Rear Gel-Coated Fiberglass End Caps
O	O	S	55	Exterior Sides Gel-Coated Fiberglass (per ft.)
S	NA	NA		Exterior Sides Ribbed Aluminum
NA	O	NA	37	Roof & Radius Top Wrap Gel-Coated Fiberglass (per ft.)
O	NA	NA	22	Roof Gel-Coated Fiberglass (per ft.)
S	S	NA		Roof, Painted Aluminum
O	O	NA	181	Roof Rack & Ladder
NA	NA	S		Roof Rack, Handrails & Molded Recessed Steps In Rear Cap
O	O	NA	17	Roof, Rubber (per ft.)
NA	S	S		Slideout, Framed w/Molded Hardwood Trim w/Carved Accent
O	O	S	3073	Slideout In Cabover (w/honeymoon suite)(w/a)
O	O	NA	4277	Slideout In Cabover (w/mirrored wardrobe & vanity center)(w/a)
S	S	S		Slideout, Large w/Free Standing Dinette (see floor plans)
NA	S	S		Snaps For Fifth Wheel Jacks
S	S	S		Step, Triple
O	O	S	246	Stone Guard, Pull Down Vinyl Recessed In Front Fiberglass Cap
O	O	NA	244	Storage, Exterior Slideout Drawer 29" (w/a)
S	S	NA		Storage, Exterior Slideout Drawer 48"

#### INTERIOR FEATURES

NA	NA	S		Bedspread, Quilted w/Matching Shams & Accent Pillow
O	S	NA	228	Bedspread, Quilted w/Reversed Shams & Accent Pillow (1)
S	S	S		Ceiling, Woven Soft Touch
S	S	S		Decorative Wall Clock
O	NA	NA	23	Floor Covering, Carpet (per ft.)(specify location)
S	S	S		Floor Covering, Carpet Scotchgard
S	NA	NA		Stainrelease, 47oz. 100% Nylon By Monsanto
NA	S	S		Floor Covering, Carpet w/High Density Pad In Living Room & Bedroom
NA	S	S		Floor Covering, Carpet w/High Density Pad Throughout
NA	O	O	897	Floor Covering, Ceramic Tile In Bath Area
O	O	O	518	Floor Covering, Hardwood Plank In Kitchen Area
S	NA	NA		Floor Covering, Vinyl In Kitchen & Bath
S	S	S		Sink Covers, Two
S	S	S		Smoke Detector & 5# Fire Extinguisher
O	O	O		State Seal
NA	S	S		Waste Basket & Convenience Light In Kitchen
NA	S	S		Window Garnish (residential style)
NA	NA	S		Window Treatmt, Day/Night Soft Shades & Lined Swag Drapes
O	NA	NA	221	Window Treatmt, Day/Night Soft Shades (liv, din & bdrm)
NA	S	NA		Window Treatmt, Day/Night Soft Shades, Lined Drapes & Cornice Boards
S	S	S		Window Treatmt, Mini Blinds (kitchen & bath)
S	NA	NA		Window Treatmt, Soft Shades, Drapes & Cornice Boards (liv, din & bdrm)



# 1994 Fifth-Wheel Specifications

## MOUNTAIN AIRE

UNIT	FRAME	NO. AXLES	AXLE CAPACITY	TIRE	GAWR EACH	GVWR	LENGTH	HEIGHT	WIDTH	DRY WEIGHT	HITCH WEIGHT
33 CKSA	12 IN I-BEAM	2	7,000	235/85 R 16 E	6,000	14,000	33' - 11"	11' - 11"	96"	11,200	1,700
33 RKL B	12 IN I-BEAM	2	7,000	235/85 R 16 E	6,000	14,000	33' - 11"	11' - 11"	96"	11,200	1,700
33 RLDK	12 IN I-BEAM	2	7,000	235/85 R 16 E	6,000	14,000	33' - 11"	11' - 11"	96"	11,200	1,700
33 WRKD	12 IN I-BEAM	2	7,000	235/85 R 16 E	6,000	14,000	33' - 11"	11' - 11"	96"	11,200	1,700
36 CKSA	12 IN I-BEAM	3	5,200	235/85 R 16 E	5,200	15,600	36' - 11"	11' - 11"	96"	12,650	1,800
36 RKWB	12 IN I-BEAM	3	5,200	235/85 R 16 E	5,200	15,600	36' - 11"	11' - 11"	96"	12,650	1,800
36 RLDK	12 IN I-BEAM	3	5,200	235/85 R 16 E	5,200	15,600	36' - 11"	11' - 11"	96"	12,650	1,800
38 RKWB	12 IN I-BEAM	3	5,200	235/85 R 16 E	5,200	15,600	39' - 4"	11' - 11"	96"	12,800	1,800
40 CKDB	12 IN I-BEAM	3	5,200	235/85 R 16 E	5,200	15,600	40' - 7"	11' - 11"	96"	13,216	2,000
40 RKSA	12 IN I-BEAM	3	5,200	235/85 R 16 E	5,200	15,600	40' - 7"	11' - 11"	96"	13,216	2,000
40 RKWB	12 IN I-BEAM	3	5,200	235/85 R 16 E	5,200	15,600	40' - 7"	11' - 11"	96"	13,216	2,000
40 RLDK	12 IN I-BEAM	3	5,200	235/85 R 16 E	5,200	15,600	40' - 7"	11' - 11"	96"	13,216	2,000
40 WRDK	12 IN I-BEAM	3	5,200	235/85 R 16 E	5,200	15,600	40' - 7"	11' - 11"	96"	13,216	2,000

## KOUNTRY AIRE

UNIT	FRAME	NO. AXLES	AXLE CAPACITY	TIRE	GAWR EACH	GVWR	LENGTH	HEIGHT	WIDTH	DRY WEIGHT	HITCH WEIGHT
33 CKSA	12 IN I-BEAM	2	7,000	235/85 R 16 E	6,000	14,000	33' - 11"	11' - 11"	96"	11,775	1,900
33 RKL B	12 IN I-BEAM	2	7,000	235/85 R 16 E	6,000	14,000	33' - 11"	11' - 11"	96"	11,775	1,900
33 RLDK	12 IN I-BEAM	2	7,000	235/85 R 16 E	6,000	14,000	33' - 11"	11' - 11"	96"	11,775	1,900
33 WRKD	12 IN I-BEAM	2	7,000	235/85 R 16 E	6,000	14,000	33' - 11"	11' - 11"	96"	11,775	1,900
36 CKSA	12 IN I-BEAM	3	6,000	235/85 R 16 E	6,000	18,000	36' - 11"	11' - 11"	96"	13,390	2,100
36 RKWB	12 IN I-BEAM	3	6,000	235/85 R 16 E	6,000	18,000	36' - 11"	11' - 11"	96"	13,390	2,100
36 RLDK	12 IN I-BEAM	3	6,000	235/85 R 16 E	6,000	18,000	36' - 11"	11' - 11"	96"	13,390	2,100
38 RKWB	12 IN I-BEAM	3	6,000	235/85 R 16 E	6,000	18,000	39' - 4"	11' - 11"	96"	13,450	2,200
40 CKDB	12 IN I-BEAM	3	6,000	235/85 R 16 E	6,000	18,000	40' - 7"	11' - 11"	96"	14,200	2,500
40 RKSA	12 IN I-BEAM	3	6,000	235/85 R 16 E	6,000	18,000	40' - 7"	11' - 11"	96"	14,200	2,500
40 RKWB	12 IN I-BEAM	3	6,000	235/85 R 16 E	6,000	18,000	40' - 7"	11' - 11"	96"	14,200	2,500
40 RLDK	12 IN I-BEAM	3	6,000	235/85 R 16 E	6,000	18,000	40' - 7"	11' - 11"	96"	14,200	2,500
40 WRDK	12 IN I-BEAM	3	6,000	235/85 R 16 E	6,000	18,000	40' - 7"	11' - 11"	96"	14,200	2,500

## LONDON AIRE

UNIT	FRAME	NO. AXLES	AXLE CAPACITY	TIRE	GAWR EACH	GVWR	LENGTH	HEIGHT	WIDTH	DRY WEIGHT	HITCH WEIGHT
36 CKSA	16 IN I-BEAM	3	7,000	235/85 R 16 E	6,000	18,000	36' - 11"	12' - 1"	101"	14,500	2,100
36 RKWB	16 IN I-BEAM	3	7,000	235/85 R 16 E	6,000	18,000	36' - 11"	12' - 1"	101"	14,500	2,100
36 RLDK	16 IN I-BEAM	3	7,000	235/85 R 16 E	6,000	18,000	36' - 11"	12' - 1"	101"	14,500	2,100
38 RKWB	16 IN I-BEAM	3	7,000	235/85 R 16 E	6,000	18,000	39' - 4"	12' - 1"	101"	14,600	2,200
40 CKDB	16 IN I-BEAM	3	7,000	235/85 R 16 E	6,000	18,000	40' - 7"	12' - 1"	101"	15,500	2,500
40 RKSA	16 IN I-BEAM	3	7,000	235/85 R 16 E	6,000	18,000	40' - 7"	12' - 1"	101"	15,500	2,500
40 RKWB	16 IN I-BEAM	3	7,000	235/85 R 16 E	6,000	18,000	40' - 7"	12' - 1"	101"	15,500	2,500
40 RLDK	16 IN I-BEAM	3	7,000	235/85 R 16 E	6,000	18,000	40' - 7"	12' - 1"	101"	15,500	2,500
40 WRDK	16 IN I-BEAM	3	7,000	235/85 R 16 E	6,000	18,000	40' - 7"	12' - 1"	101"	15,500	2,500

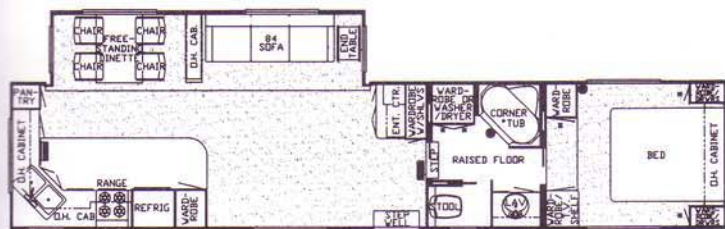
Lengths, Heights, Widths, Dry Weights and Hitch Weights are approximate.

## FIFTH-WHEELS STANDARDS/OPTIONS

MA	KA	LA	RETAIL COST	AIR CONDITIONING, HEATING & LP GAS
O	O	NA	62	Air Conditioner, Brisk 15M BTU (ILO 13.5M BTU)(each)
S	S	NA		Air Conditioner, Central, Brisk Air 13.5 BTU (1)
O	O	NA	905	Air Conditioner, Central, Brisk Air 13.5 BTU (extra)
NA	NA	S		Air Conditioner, Central, Penguin 13.5 BTU w/Heat Strip (1)
NA	NA	O	1047	Air Conditioner, Central, Penguin 13.5 BTU w/Heat Strip (extra)
S	S	S		Furnace (see specifications chart for rating)
S	S	S		Heat, In Floor, Ducted
S	S	NA		LP Gas Bottles, 2-30# w/Automatic Regulator
NA	O	NA	41	LP Gas Bottles, 2-40#
O	NA	S	247	LP Gas Bottles, 2-40# w/Automatic Regulator (on slideout tray)
NA	S	NA		LP Gas Bottles, Slideout Tray
O	O	S	81	LP Leak Detector (12V w/remote switch)
NA	NA	S		LP Sight Level Gauges

MA	KA	LA	RETAIL COST	APPLIANCES & ACCESSORIES
S	S	S		Bath Accessories, Brass (1 each-towel bar, tis hldr, towel ring, robe hook)
NA	O	O	624	Dishwasher (w/a)
NA	NA	S		Faucet For Kitchen Sink, Single Handle Hi Rise (chrome)
NA	NA	S		Faucet For Shower & Lavatory Single Handle (gold)
NA	O	O	756	Icemaker (110V)
O	O	O	325	Icemaker Added To Dometic Refrigerator
O	O	NA	399	Microwave Oven, Sharp 22"
NA	O	S	889	Microwave Convection Oven, Sharp 30" w/4 Burner Hot Plate
O	NA	NA	948	Microwave Convection Oven, Sharp 30" w/4 Burner Hot Plate
S	S	NA		Microwave Prep
S	S	S		Range Cover, Bi-Fold
S	S	NA		Range Hood w/Light & Fan
S	NA	NA		Range, Magic Chef 4-Burner 22" w/Black Glass Oven Door
NA	S	NA		Range, Magic Chef 4-Burner 22" w/Black Glass Windowed Oven Door





MA/KA 40' RKWB



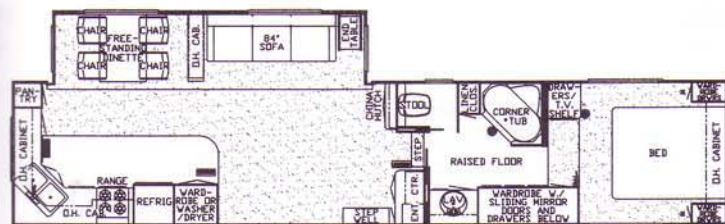
LA 40' RKWB



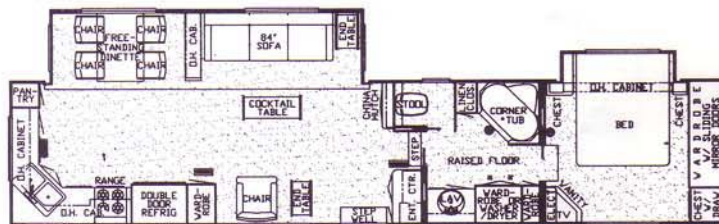
MA/KA 40' RLDK



LA 40' RLDK



MA/KA 40' WRKD



LA 40' WRKD

Kountry Aire floor plans are shown with optional hardwood plank floor in kitchen and ceramic tile in bath. Carpet is standard throughout.

#### Rear Bedroom Twin Bed

MA/KA: 30' CFL-TT  
MA/KA: 32' AK-TT  
MA/KA: 32' CFKS-TT  
MA/KA: 32' CFLS-TT



#### Corner Shower

MA/KA: 30' CFL-TT  
MA/KA: 32' AK-TT  
MA/KA: 32' CFKS-TT  
MA/KA: 32' CFLS-TT  
MA/KA: 33' RLDK-FW  
MA/KA: 33' WRKD-FW  
MA/KA/LA: 36' RKWB-FW  
MA/KA/LA: 36' RLDK-FW  
MA/KA/LA: 38' RKWB-FW  
MA/KA/LA: 40' CKDB-FW  
MA/KA/LA: 40' RKSA-FW  
MA/KA/LA: 40' RKWB-FW  
MA/KA/LA: 40' WRKD-FW



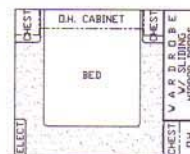
#### Straight Tub

MA/KA: 30' CFL-TT  
MA/KA: 32' AK-TT  
MA/KA: 32' CFKS-TT  
MA/KA: 32' CFLS-TT  
MA/KA: 33' CKSA-FW  
MA/KA: 33' RKLB-FW  
MA/KA/LA: 36' RKWB-FW  
MA/KA/LA: 36' RLDK-FW  
MA/KA/LA: 38' RKWB-FW  
MA/KA/LA: 40' RKSA-FW  
MA/KA/LA: 40' RKWB-FW  
MA/KA/LA: 40' RLDK-FW  
MA/KA/LA: 40' WRKD-FW



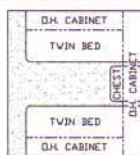
#### Honeymoon Suite Cabover

MA/KA: 33' CKSA-FW  
MA/KA: 33' RLDK-FW  
MA/KA: 33' WRKD-FW  
MA/KA: 36' CKSA-FW  
MA/KA: 36' RKWB-FW  
MA/KA: 36' RLDK-FW  
MA/KA: 38' RKWB-FW  
MA/KA: 40' CKDB-FW  
MA/KA: 40' RKWB-FW  
MA/KA: 40' RLDK-FW  
MA/KA: 40' RKSA-FW  
MA/KA: 40' WRKD-FW



#### Cabover Bedroom Twin Bed

MA/KA: 33' CKSA-FW  
MA/KA: 33' RKLB-FW  
MA/KA: 33' RLDK-FW  
MA/KA: 33' WRKD-FW  
MA/KA/LA: 36' CKSA-FW  
MA/KA/LA: 36' RKWB-FW  
MA/KA/LA: 36' RLDK-FW  
MA/KA/LA: 38' RKWB-FW  
MA/KA/LA: 40' CKDB-FW  
MA/KA/LA: 40' RKSA-FW  
MA/KA/LA: 40' RKWB-FW  
MA/KA/LA: 40' RLDK-FW  
MA/KA/LA: 40' WRKD-FW



#### Straight Shower

MA/KA: 30' CFL-TT  
MA/KA: 32' AK-TT  
MA/KA: 32' CFKS-TT  
MA/KA: 32' CFLS-TT  
MA/KA/LA: 36' RKWB-FW  
MA/KA/LA: 36' RLDK-FW  
MA/KA/LA: 38' RKWB-FW  
MA/KA/LA: 40' RKWB-FW  
MA/KA/LA: 40' RLDK-FW  
MA/KA/LA: 40' WRKD-FW



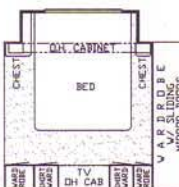
#### Honeymoon Suite w/Slideout

MA/KA: 33' CKSA-FW  
MA/KA: 33' RLDK-FW  
MA/KA: 33' WRKD-FW  
MA/KA: 36' RKWB-FW  
MA/KA: 36' CKSA-FW  
MA/KA: 36' RLDK-FW  
MA/KA: 38' RKWB-FW  
MA/KA: 40' CKDB-FW  
MA/KA: 40' RKWB-FW  
MA/KA: 40' RLDK-FW  
MA/KA: 40' RKSA-FW  
MA/KA: 40' WRKD-FW

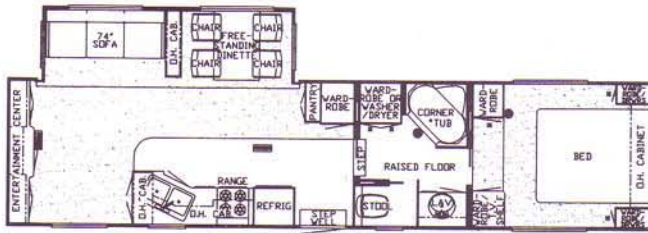


#### Honeymoon Suite w/Slideout & Vanity Center

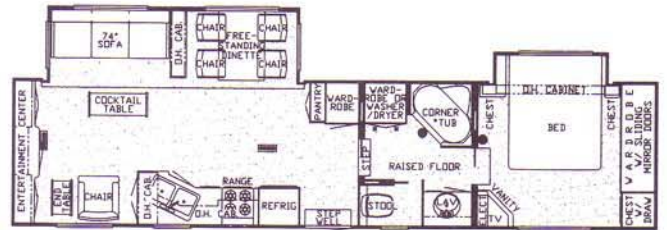
KA: 33' RLDK-FW  
KA: 33' WRKD-FW  
KA/LA: 36' RKWB-FW  
KA/LA: 36' RLDK-FW  
KA/LA: 40' CKDB-FW  
KA/LA: 40' RKWB-FW  
KA/LA: 40' RLDK-FW  
KA/LA: 40' WRKD-FW



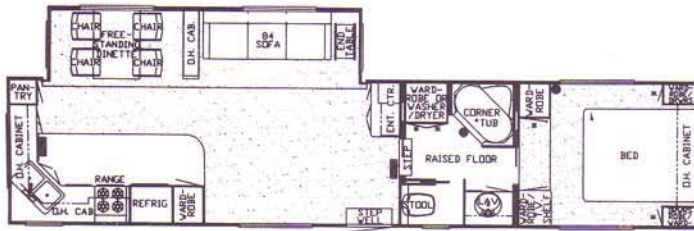




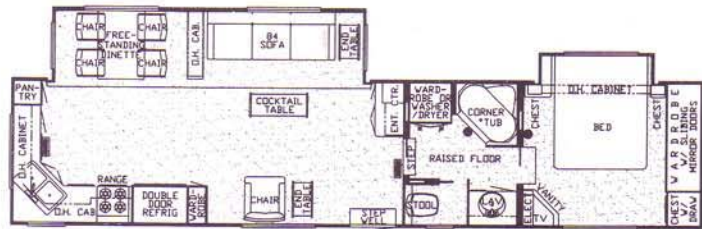
MA/KA 36' RLDK



LA36' RLDK



MA/KA 38' RKWB



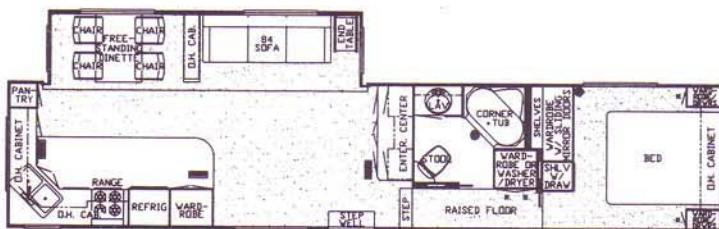
LA 38' RKWB



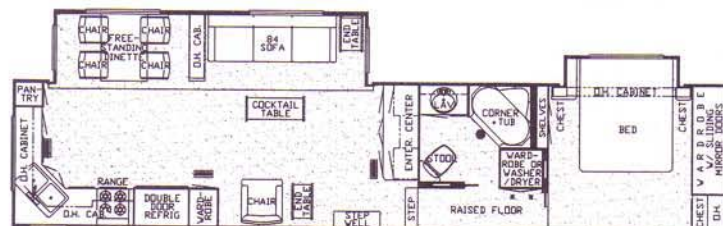
MA/KA 40' CKDB



LA 40' CKDB



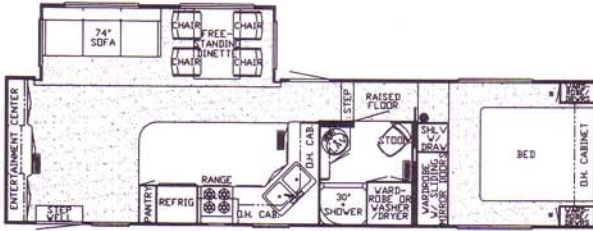
MA/KA 40' RKSA



LA 40' RKSA

Kountry Aire floor plans are shown with optional hardwood plank floor in kitchen and ceramic tile in bath. Carpet is standard throughout.

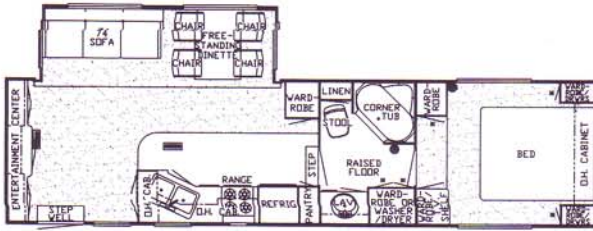




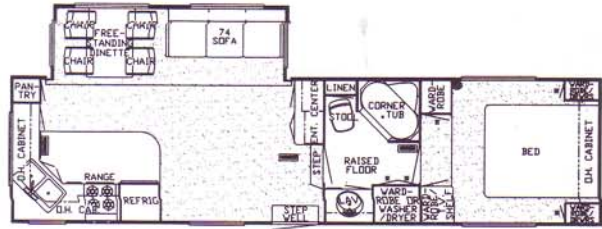
MA/KA 33' CKSA



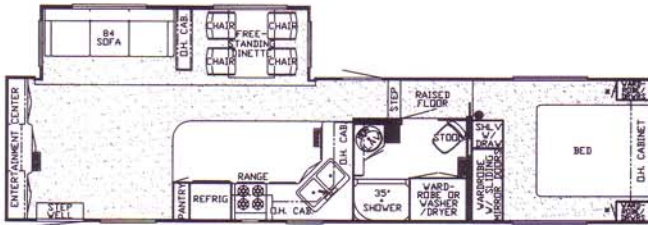
MA/KA 33' RKL B



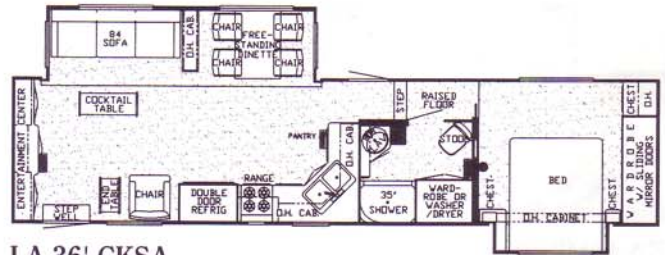
MA/KA 33' RLDK



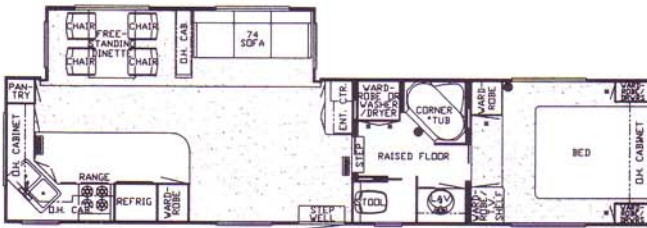
MA/KA 33' WRKD



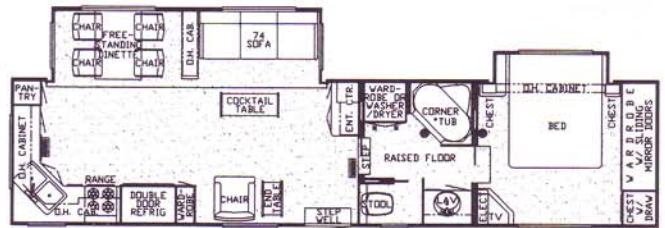
MA/KA 36' CKSA



LA 36' CKSA



MA/KA 36' RKWB



LA 36' RKWB

Kountry Aire floor plans are shown with optional hardwood plank floor in kitchen and ceramic tile in bath. Carpet is standard throughout.



MA	KA	RETAIL COST	CABINETS & FURNITURE
O	O	553	Chair, Flexsteel Swivel Glider Recliner w/Foot Rest
O	O	362	Chair, Swivel Rocker
O	O	491	Chair, Swivel Rocker Recliner w/Foot Rest
O	O	44	Countertop Extension (w/a)
NA	S		Drawers w/Metal Guides & Side Rollers
O	O	79	Hardwood Trim On Entrance Door (each)
O	NA	138	Hidden Leaf Dinette Table ILO Free Standing Table
NA	O	62	Hidden Leaf Dinette Table ILO Free Standing Table
NA	S		Lazy Susan (w/a)
NA	NA		Leaded Glass Accent Door w/Mood Lighting
NA	S		Leaded Glass Beveled Accent Door w/Mood Lighting
S	S		Lifts For Convenient Storage Under Fixed Beds
S	S		Molded Silverware Divider Tray
O	S	174	Pull Out Pantry (w/a)
S	NA		Sofa, Flexsteel Magic Bed
NA	S		Sofa, Flexsteel Magic Bed w/Fold Out Snack Trays

#### ELECTRICAL & LIGHTING EQUIPMENT

S	S		Battery, 125 AMP Thermoil
O	O	124	Battery, 125 AMP Thermoil (extra)
S	S		Converter, 50 AMP w/Charger
S	NA		Electrical Service, 30 AMP
O	S	221	Electrical Service, 50 AMP
O	O	40	Light, Exterior Security (each)(specify location)
O	S	406	Lighting, Fluorescent Recessed In Ceiling
S	NA		Lights In Wardrobes
NA	S		Lights In Wardrobes w/Automatic Switches
NA	S		Lights, Interior Courtesy
S	S		Monitor Panel
S	S		Recepts, 110V GFI (interior & exterior)
S	S		Stereo, AM/FM Cassette w/Clock
S	NA		TV Antenna Prep (wire, shelf & 2 jacks)
O	S	193	TV Antenna w/Power Booster & 2 Jacks
S	S		TV, Cable Ready
O	O	44	TV Jack, Exterior On Door Side
O	O	63	TV Video Switch
O	O	44	Telephone Jack Interior (each)(specify location)
O	O	83	VCR Prep

#### EXTERIOR FEATURES

S	S		Exterior Front & Rear Gel-Coated Fiberglass End Caps
O	O	55	Exterior Sides Gel-Coated Fiberglass (per ft.)
S	NA		Exterior Sides Ribbed Aluminum
NA	O	37	Roof & Radius Top Wrap Gel-Coated Fiberglass (per ft.)
O	NA	22	Roof, Gel-Coated Fiberglass (per ft.)
S	S		Roof, Painted Aluminum
O	O	181	Roof Rack & Ladder
O	O	17	Roof, Rubber (per ft.)
NA	S		Slideout, Framed w/Molded Hardwood Trim w/Carved Accent
S	S		Slideout, Large w/Free Standing Dinette (see floor plans)
S	S		Step, Triple
O	O	244	Storage, Exterior Slideout Drawer 29" (w/a)
S	S		Storage, Exterior Slideout Drawer 48"
O	S	228	Bedsprad, Quilted w/Reversed Shams & Accent Pillow (1)
S	S		Ceiling, Woven Soft Touch
S	S		Decorative Wall Clock
O	NA	23	Floor Covering, Carpet (per ft.)(specify location)
S	S		Floor Covering, Carpet Scotchgard
			Stainrelease, 47oz. 100% Nylon By Monsanto

#### INTERIOR FEATURES

S	NA		Floor Covering, Carpet w/High Density Pad In Living Room & Bedroom
NA	S		Floor Covering, Carpet w/High Density Pad Throughout
NA	O	897	Floor Covering, Ceramic Tile In Bath Area
O	O	518	Floor Covering, Hardwood Plank In Kitchen Area
S	NA		Floor Covering, Vinyl In Kitchen & Bath

MA	KA	RETAIL COST	INTERIOR FEATURES
S	S		Sink Covers, Two
S	S		Smoke Detector & 5# Fire Extinguisher
O	O		State Seal
NA	S		Waste Basket & Convenience Light In Kitchen
NA	S		Window Garnish (residential style)
O	NA	221	Window Treatment, Day/Night Soft Shades (liv, din & bdrm)
NA	S		Window Treatment, Day/Night Soft Shades, Lined Drapes & Cornice Boards
S	S		Window Treatment, Mini Blinds (kitchen & bath)
S	NA		Window Treatment, Soft Shades, Drapes & Cornice Boards (liv, din & bdrm)

#### PLUMBING SYSTEMS

S	S		Insulated Holding Tanks
O	O	90	Sewage Holding Tank Rinse
S	S		Water & Holding Tanks (see specifications chart for capacity)
S	S		Water System Demand w/12V Pump & 5/8" Polybutylene Lines
S	S		Winterize Convenience Package (w/water heater bypass)

#### RUNNING GEAR & CONSTRUCTION

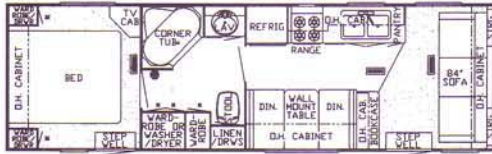
S	S		E-Z Lube Axles
S	S		Floor Decking, Plywood
S	S		Frame, Size 12" I-Beam w/Pull Out Storage & Battery Drawers
NA	O	4347	Frame, Size 16" I-Beam w/Fiberglass Wrap & Maximum Storage
NA	S		Insulation, 1/4" Foam Board Exterior Roof
S	S		Insulation, 1/4" Foam Board Exterior Sidewalls (w/metal sides)
S	NA		Insulation, Fiberglass R7 Sidewalls & Floor, R10 Roof
NA	S		Insulation, Fiberglass R7 Sidewalls, R19 Floor & Roof
S	S		Insulation, Laminated 5/8" Foam In Sidewalls & Ceiling
O	O	286	Jack, 12V Powered
S	S		Jacks, Stabilizer (set of 2)
O	O	613	Jacks, Stabilizers, 12V Power Twins A & E (set of 2 ILO std )
S	S		Radial Tires (see specifications chart for size & rating)
S	S		Rear Bumper, Fiberglass w/Slide Out Tray For Spare Tire (w/a)
S	S		Safety Chains
S	S		Shock Absorbers
O	S	224	Skid Bars For Rear Bottom Protection
S	S		Spare Tire
S	S		Structure, Aluminum Sidewalls & Roof
O	O	396	Suspension, Mor Ryde (per axle)
S	S		Underbelly, Enclosed Aluminum w/Laminated 5/8" Foam

#### WINDOWS, DOORS, AWNINGS & VENTS

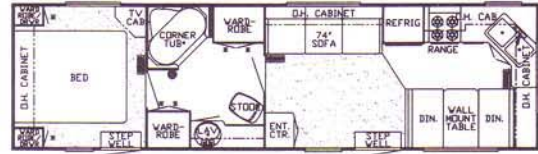
S	S		Awning, Front (w/a)
O	O	251	Awning, Rear, Recessed In Fiberglass End Cap (w/a)
O	NA	825	Awning, Side A & E 8500
NA	O	1028	Awning, Side A & E 9000
O	O	94	Awning, Side Tension Rafter
O	NA	144	Awning, Window A & E 8500 (per window) (specify location)
NA	O	208	Awning, Window A & E 9000 (per window) (specify location)
NA	O	39	Door Bell
S	S		Entrance Door Stepwell Tread Liner
NA	S		Exterior Lighted Acrylic Assist Handle (at main entrance door)
S	S		Radius Entrance Door w/Deadbolt & Lighted Step
O	O	210	Skylight In Bathroom w/Soft Shade
O	O	335	Vent, 12V Fantastic 3-Speed w/Power Opener (specify location)
S	S		Vent, 12V In Bath Area w/Wall Switch
O	O	59	Window Glass, Dark Tinted & Safety (each)
S	S		Windows, Radius Torque
O	O	91	Windows, Safety Glass Storms (each)



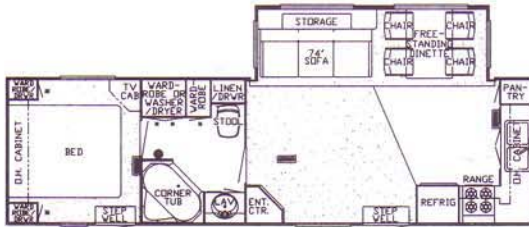
## TRAVEL TRAILERS



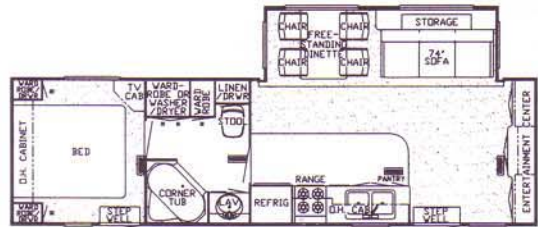
MA/KA 30' CFL



MA/KA 32' AK



MA/KA 32' CFKS



MA/KA 32' CFLS

Kountry Aire floor plans are shown with optional hardwood plank floor in kitchen and ceramic tile in bath. Carpet is standard throughout

### 1994 Travel Trailer Specifications

MOUNTAIN AIRE											
UNIT	FRAME	NO. AXLES	AXLE CAPACITY	TIRE	GAWR EACH	GVWR	LENGTH	HEIGHT	WIDTH	DRY WEIGHT	HITCH WEIGHT
30 CFL	12 IN I-BEAM	2	5,200	235/85 R 16 E	5,200	11,400	30' - 10"	10' - 11"	96"	8,000	850
32 AK	12 IN I-BEAM	2	5,200	235/85 R 16 E	5,200	11,400	32' - 10"	10' - 11"	96"	8,400	850
32 CFKS	12 IN I-BEAM	2	6,000	235/85 R 16 E	6,000	12,000	32' - 10"	10' - 11"	96"	9,550	950
32 CFLS	12 IN I-BEAM	2	6,000	235/85 R 16 E	6,000	12,000	32' - 10"	10' - 11"	96"	9,550	950
KOUNTRY AIRE											
UNIT	FRAME	NO. AXLES	AXLE CAPACITY	TIRE	GAWR EACH	GVWR	LENGTH	HEIGHT	WIDTH	DRY WEIGHT	HITCH WEIGHT
30 CFL	12 IN I-BEAM	2	6,000	235/85 R 16 E	6,000	12,000	30' - 10"	10' - 11"	96"	8,000	850
32 AK	12 IN I-BEAM	2	6,000	235/85 R 16 E	6,000	12,000	32' - 10"	10' - 11"	96"	8,400	850
32 CFKS	12 IN I-BEAM	2	6,000	235/85 R 16 E	6,000	12,000	32' - 10"	10' - 11"	96"	9,720	950
32 CFLS	12 IN I-BEAM	2	6,000	235/85 R 16 E	6,000	12,000	32' - 10"	10' - 11"	96"	9,720	950

Lengths, Heights, Widths, Dry Weights and Hitch Weights are approximate.

## TRAVEL TRAILERS STANDARDS/OPTIONS

MA KA		RETAIL COST	AIR CONDITIONING, HEATING & LP GAS	MA KA		RETAIL COST	APPLIANCES & ACCESSORIES	
S	S	905	Air Conditioner, Central, Brisk Air 13.5 BTU (1)	S	NA	128	Stool, Aqua Magic IV	
O	O		Air Conditioner, Central, Brisk Air 13.5 BTU (extra)	O	S		Stool, China w/Spray Attachment	
S	S		Furnace	S	S		Tub/Shower Ceiling Light	
S	S		Heat, In Floor, Ducted	S	NA		Tub/Shower Enclosure	
S	S		LP Gas Bottles, 2-30# w/Automatic Regulator	O	NA		Tub/Shower, Fiberglass	
O	O	81	LP Leak Detector, 12V w/remote switch	NA	S	221	Tub/Shower, Fiberglass w/Enclosure	
							Tub/Shower Surround	
							Washer/Dryer Prep w/Floor Drain Pan & Louver Cabinet Doors (w/a)	
						1303	Washer/Dryer, Sears w/Floor Drain Pan, Pull Out Shelf & Louver Cab Doors (w/a)	
						155	Water Filtering System w/Drink Dispenser (kitchen)	
							Water Heater, 6 Gal. Gas	
S	S	325	Bath Accessories, Brass (1 each-towel bar, tis hldr, towel ring, robe hook)	S	NA	218	Water Heater, 10 Gal. Gas/Electric w/Direct Spark Ignition	
O	O		Ice maker Added To Dometic Refrigerator	NA	O		Water Heater, 10 Gal. Gas/Electric w/Direct Spark Ignition	
O	O	399	Microwave Oven, Sharp 22"	O	NA	395	Water Heater, 10 Gal. Gas/Electric w/Reigniter	
NA	O	889	Microwave Convection Oven, Sharp 30" w/4 Burner Hot Plate	O	S		243	
O	NA	948	Microwave Convection Oven, Sharp 30" w/4 Burner Hot Plate					CABINETS & FURNITURE
S	S		Microwave Prep					Bed, Queen (60" X 75")
S	S		Range Cover, Bi-Fold					Bed, Twins (32" X 75")(w/a)
S	S		Range Hood w/Light & Fan					Cabinetry, Bleached Oak Hardwood
S	NA	195	Range, Magic Chef 4-Burner 22" w/Black Glass Oven Door					Cabinetry, Cherry Hardwood w/Raised Panel Cathedral Doors
NA	S		Range, Magic Chef 4-Burner 22" w/Black Glass Windowed Oven Door					Cabinetry, Oak Hardwood
S	NA		Refrigerator, Dometic Double Door 2607.2					Cabinetry, Oak w/Raised Panel Cathedral Doors
O	S		566	Refrigerator, Dometic Double Door 2807.2				
NA	O	566	Refrigerator, Dometic Double Door 3807.3 AES					
S	S		Refrigerator, Front Hardwood Raised Panel					



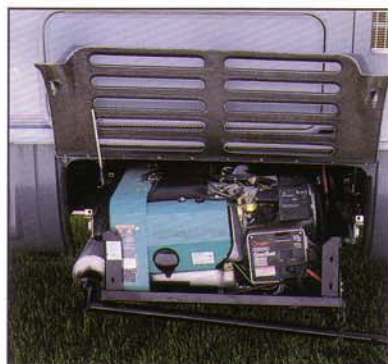
The patented automatic door stop retracts when the entry door is closed. It is standard on all London Aires.



The sliding L.P. tank tray is a valuable feature because it effortlessly brings the bottles to you. You don't have to bend over and reach inside a dark compartment and fumble with the valves or fittings to change tanks.



If you ever had to fight finding easy access to your generator in conventional fifth-wheels, you can really appreciate what London Aire offers as an alternative. This sliding generator rack makes generator maintenance a breeze.



Heavy-duty 16-inch wheels and oversized brakes let you tow in comfort and safety. All London Aire units have 12-1/4" x 3-3/8" brakes to produce a much larger braking area that will handle the load and give you peace of mind.



No space is wasted as is demonstrated here with these large available storage compartments that may be located behind the sofa and are accessible through the exterior slideout wall. Belongings are weather-proofed, too. And speaking of slideouts, our new "Synchronized Quiet Slide," rack-and-pinion power slideout mechanism offers stronger, faster, smoother operation than ever before.



Standard features like the front fifth-wheel stabilizers (which store in the lower front wrap of the cabover), the roll-down stone guard and the effortless power jack with convenient snap pins are what set London Aire apart from all the rest.



The power window awning, molded-in roof ladder and sliding bumper tray for spare tire and sewer hose are exclusive features that are standard on London Aire.





This delightful living area in the travel trailer is a work of art, from the rich blend of fabrics and hardwoods to the eye appeal and convenience of the entertainment center. Newmar's unchallenged talent for quality and elegance shines again in the Mountain Aire towables for 1994.



That classic Newmar look holds true in this Mountain Aire travel trailer. Large radiused corners provide better aerodynamics and better tracking.





The spacious bedroom is laid out to allow you to move around the bed. Plenty of overhead, wardrobe and drawer storage helps to keep it tidy and affords all the comforts of home.







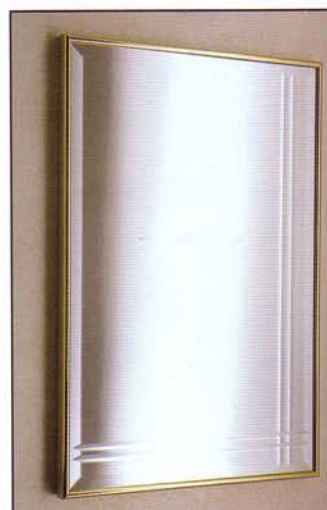
Beveled, etched mirrors with brass frame are accent features of Mountain Aires, with locations varying according to floor plan.



Storage space is a priority with RVers and Newmar realized this. That is why every vacant area is practically put to use like this large pantry in the galley.



The Magic Bed™ serves two important functions. During the day, it is a comfortable sofa, at night it converts to a firm, supporting bed for one or two.







The large slideouts available with Mountain Aire make the living area, kitchen and dining areas as roomy and open as a domestic home. Smart interior design and practical use of space lend themselves to this stately look. Top it all off with residential style furnishings and name brand contemporary appliances and you can see why Mountain Aire is becoming so popular.





# MOUNTAIN AIRE



Another fine cousin in the Aire family of towables is the Mountain Aire. This mid priced, all aluminum construction RV maintains Newmar's quality of excellence. Large radiused corners and its own distinct exterior color graphics make the Mountain Aire a handsome addition to the Aire Family.

High R-factor ratings along with well planned engineering enable this line of towables to provide comfort in virtually all climates. Ample storage space inside and out and a variety of popular floor plans and options enable you to tailor a Mountain Aire fifth-wheel or travel trailer to your own needs.

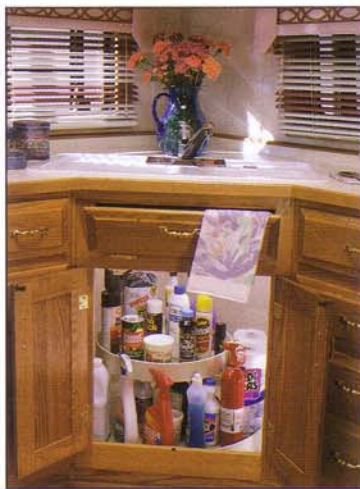




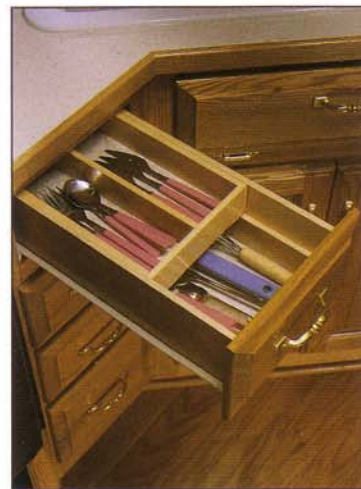
That classic, inviting look that is so familiar to the Kountry Aire name just keeps getting better every year. The warmth of solid oak and brass greet you as you step into this roomy galley. Hardwood provides durability as well as elegance and will perform and still look great years from now.



This upper Lazy Susan cabinet helps keep food items organized and within easy reach.



The lower cabinet revolving shelf is also a great organizer for cleaning supplies and both the upper and lower Lazy Susans help keep stored items in place when traveling.



The sliding drawer dividers should be in every home, not just in RVs. Another great idea from Newmar to end the clutter and confusion inherent with silverware drawers.





The positionable pivoting snack/dinner trays are a very handy feature and are stored away in compartments built into the arms of the Magic Bed™ when not in use.

The stacking washer and dryer are a convenience no one wants to be without. Note the solid oak doors with the built-in louvers for proper ventilation.



Every area of the Kountry Aire fifth-wheel is carefully planned and thought out. The practical use of space in this entertainment center keeps everything you need conveniently located in one place, yet displaces very little space from the room.



The ever popular free-standing dinette and chairs is always a popular feature and now provides an optional folding hidden leaf for even more room and versatility.







Kountry Aire fifth-wheels (shown above) are your home away from home. Not only does our professional interior designer richly appoint every coach, but our engineers are busy at the same time making sure you're comfortable in any climate you visit.

The large 17-foot slideout comes into play here and adds a new dimension in space and versatility. Rich oak and plush fabrics merge to give that "Kountry Style" that is Kountry Aire's trademark.



Kountry Aire Travel Trailer



# KOUNTRY AIRE



**K**ountry Aire is the name Newmar Corporation was founded on and is the flagship of the fleet. Kountry Aire is the best known "full timers" RV because of its consistent reliability, quality and is the first choice of return customers. Every coach is built blending Old World Craftsmanship with Today's Technology.

If you add up all the advantages with Kountry Aire, it's easy to see why "full timers" keep returning. Large spacious slideouts, the finest materials and components, all climate comfort and beauty found only in the high-end range RVs combine to produce the finest line of towables in their class.





Considerations like the residential side-by-side refrigerator combined with ample cabinet and counter space make this London Aire galley the envy of homemakers and RVers. Everything is at your fingertips and includes extras like the popular full length pantry, built-in microwave oven, Corian counter top, hi-rise faucet and optional dishwasher.



Note the contour roof line on the slideout. This design looks better inside and out. Newmar's exclusive self-sealing weather stripping around the entire slideout housing insures dry, draft-free comfort all year round.





Privacy and comfort marry with ceramic tile floors, Corian lavatory tops and brass fixtures to make even the bath a showroom.

Whether formal or casual, the free-standing dinette in the slideout provides the setting, added space and versatility to accommodate both needs in elegance.





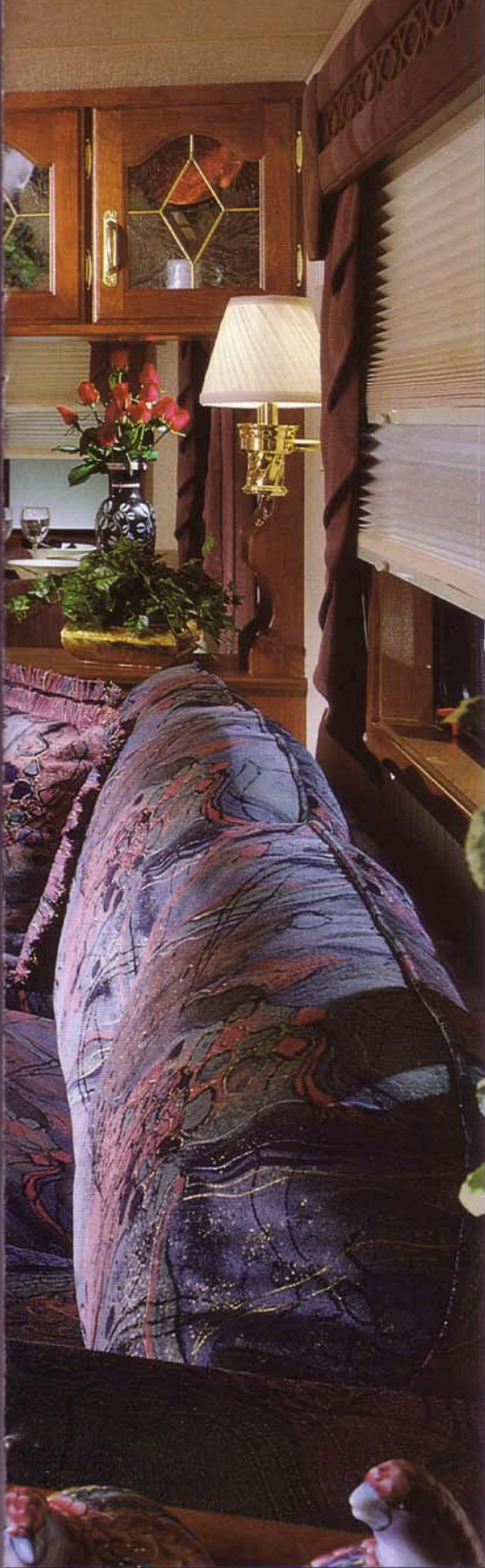


High expectations are synonymous with the London Aire name, and that holds true with every room and detail in the coach. These bedrooms rival the most exquisite hotels. Comfort, convenience and space are the focus.



Practical use of space in an eye pleasing setting sums up the built in vanity in the bedroom. Again, the luscious cherry hardwood adds an inviting warmth.





Our slideouts don't look like an afterthought as with so many others. The new hardwood surround gives the domestic feel of hardwood with carved fretwork and blends with the rest of the decor.



The recliner and other residential style furniture is standard equipment in London Aire fifth-wheels.





The dark richness of hand selected cherry hardwood in the planked flooring, cabinetry and domestic furnishings greets you in the London Aire fifth-wheel. We offer five interior color packages to blend your taste with the rich elegance of the wood.

Our spacious slideouts are engineered with a durable, compact and quiet mechanism that is simple to use. These slideouts are designed to match the roof line of the coach rather than squared off parallel to the floor as with most RV slideouts. This not only

enhances the looks, but provides the area with more head room. Newmar's passion for quality and luxury is displayed in the London Aire.



# LONDON AIRE



Incomparably luxurious, spacious and sleek best describe the ultimate London Aires by "the experts in fifth-wheels", Newmar Corporation. These premier recreational vehicles are the best of the best... the Cadillac of the industry. Not only do London Aire fifth-wheels encompass every possible luxury and convenience available to the serious RVer, but they are packaged in a sleek and virtually maintenance-free exterior.

The London Aire reputation for quality and elegance doesn't stop with the interiors. These coaches tow and handle like a dream and incorporate an impressive list of exterior standard features unmatched by our competitors. Add to this the limited lifetime warranty and incredibly high R-factor ratings and it's easy to understand why London Aire fifth-wheels were named the "best buy" in 1992 by Consumer Digest.







# KOUNTRY STYLE A I R E S C O N T E N T S

Volume VIII

1994 Model Year

## Features

LONDON AIRE .....	3
KOUNTRY AIRE .....	9
MOUNTAIN AIRE .....	13
FLOOR PLANS .....	19



### London Aire — \*Lifetime Limited Warranty on Superstructure

Newmar Corporation warrants the Superstructure which includes the following: the 16" I-beam Frame; the Aluminum Framing in the Sidewalls and Roof. If any part of the Superstructure fails to perform properly because of faulty workmanship or materials supplied by Newmar, during the ownership of the original buyer, it will be repaired without charge for either parts or labor by Newmar providing the proper claim procedures are followed. All other items excluding the Superstructure are covered under the standard Newmar 1 Year Limited Warranty. See Owner's Manual for details.



### Kountry Aire, Mountain Aire — \*5 Year Limited Warranty on Superstructure

Newmar Corporation warrants the Superstructure which includes the following: the 12" I-beam Frame; the Aluminum Framing in the Sidewalls and Roof. If any part of the Superstructure fails to perform properly within 5 years from the date of purchase because of faulty workmanship or materials supplied by Newmar, during the ownership of the original buyer, it will be repaired without charge for either parts or labor by Newmar providing the proper claim procedures are followed. All other items excluding the Superstructure are covered under the standard Newmar 1 Year Limited Warranty. See Owner's Manual for details.

## STAFF

Publisher .....	Mahlon Miller
Editor .....	Virgil Miller
Art Director .....	Jimmy Long
Coordinator .....	Craig Alexander
Copywriter .....	Jim Eikenberry
Photographer .....	Dave Hugus
Stylist .....	Bonnie Hoffer
Printer .....	Ann Robbins

Newmar Corporation invites you to tour our full line of fine recreational vehicles throughout our brochures. The innovations you'll see will explain our progressive way of doing business. With 26 years of experience, we've managed to perfect slideouts, including the first major motorhome slideouts. We have pioneered the Honeymoon Suite, the power awning, the roll up stone guard, the sliding bumper tray, an efficient central air system and the list goes on and on.

When we refer to Old World Craftsmanship blended with Today's Technology, we're implying literally that with all the advanced and contemporary concepts we've created, Newmar employees still maintain those old world ways in quality and craftsmanship. These fine products are designed and built by RVers for RVers. We know those needs and expectations of our customers because not only do we design, build and sell RVs, we also use them. If it's comfort, elegance and reliability you're shopping for, look no further...Newmar Corporation has the perfect RV for your needs and budget.