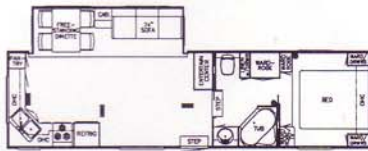


1995 Kountry Aire
Mountain Aire
Kountry Aire
Mountain Aire
Kountry Aire
Mountain Aire



5th Wheels by Newmar

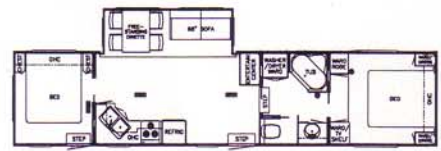
Kountry Aire • Mountain Aire • Floor Plans



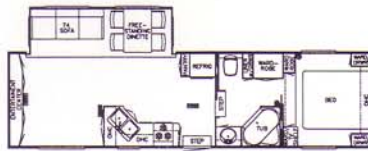
KA/MA 33 RCLB



KA/MA 36 RKWB



KA/MA 40 CKDB



KA/MA 33 RLDK



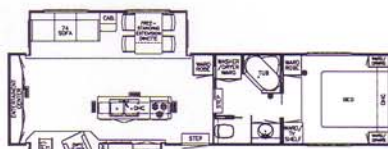
KA/MA 36 RLDK



KA/MA 40 LSDK



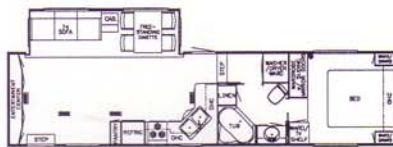
KA/MA 33 WRKD



KA/MA 36 RLDS



KA/MA 40 RKSA



KA/MA 36 CKSA



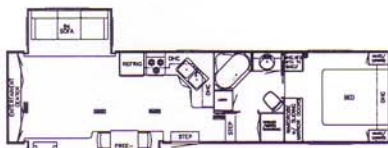
KA/MA 36 RLWB



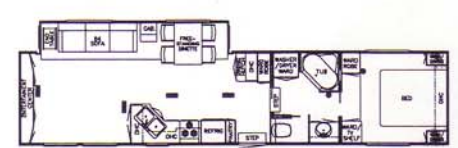
KA/MA 40 RKWB



KA/MA 36 RKDS



KA/MA 36 SADS



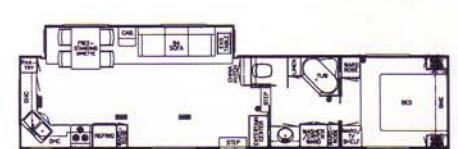
KA/MA 40 RLDK



KA/MA 36 RKSA



KA/MA 36 SKDS



KA/MA 40 WRKD

Prices, specifications and floor plans are subject to change at Newmar's discretion without prior written notice or obligation.
Some floor plans may show optional chairs or end tables. See Dealer for availability.

Mountain Aire • Standards & Options

Standards

Air Conditioner Central Brisk Air
13.5M BTU (1)
Refrigerator Dometic Double Door
2807.2
Drawers With Metal Guides & Side
Rollers
Flexsteel Furniture
Frame Size 12" I-Beam & Molded
Wrap Maximum Storage, Single
Slideout Models
Frame Size 16" I-Beam & Molded
Wrap Maximum Storage, Double
Slideout Models
Suspension Triple Axle (36 & up)
Exterior Front & Rear Gel-Coated
Fiberglass End Caps
Jack 12 Volt Powered
Slideout Large With Free Standing
Dinette (see floor plans)
Bedsprad Quilted With Reversed
Shams & Accent Pillow (1)

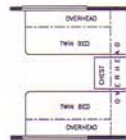
Ceiling Woven Soft Touch
Floor Covering, Vinyl in Kitchen
and Bath
Floor Covering, Carpet Staintech,
45 oz. 100% Nylon Plush Saxony
Waste Basket & Convenience Light
in Kitchen
Tub/Shower Fiberglass with Enclosure
Winterize Convenience Package
(with water heater bypass)
Insulation Fiberglass R7 Sidewalls,
R19 Floor & Roof
Insulation Foam 5/8" laminated in
Sidewalls & Ceiling
Rear Bumper with Slide Out Tray
for Spare Tire
Structure, Aluminum Sidewalls &
Roof
Structure, Widebody
Underbelly Enclosed Aluminum
With Laminated 5/8" Foam

Options

Air Conditioner Central Brisk Air
15M BTU (extra)
Air Conditioner Central Brisk Air
15M BTU in Place of 13.5M
Ceiling Fan
Microwave Oven 22" Panasonic
Washer/Dryer Prep with Floor Drain
Pan (where available)
Water Heater 10 Gallon Gas/Electric
with Direct Spark Ignition
Bed Twins (32" x 75") (where available)
Cabinetry Oak Hardwood
Chair Flexsteel Glider/Recliner
Honeymoon Suite Bedroom
(where available)
Converter 75 AMP With Charger
Electrical Service 50 AMP

Lighting Fluorescent Recessed in
Ceiling
Exterior Sides Gel-Coated Fiberglass
(per foot)
Roof Gel-Coated Fiberglass (per
foot)
Roof Rack & Ladder
Slideout in Cabover (with honeymoon
suite) (where available)
Stabilizer for Fifth Wheel Pin (built in)
Floor Covering, Hardwood Plank in
Kitchen Area
Sewage Holding Tank Rinse
Awning side A & E 8500
Skylight in Bathroom with Soft Shade
Vent 12 Volt Fantastic 3-Speed
with Power Opener in Kitchen

Optional Floor Plans (where available)



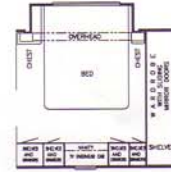
Twin Bed



Honeymoon Suite



Honeymoon Suite
w/Slideout



Honeymoon Suite
w/Slideout & Vanity

See Dealer For Availability.

1995 • Mountain Aire • Specifications

Model	No. Axes	Axle Capacity	Tire	GAWR	GVWR	Approx. Length	Approx. Height	Approx. Width	Approx. Weight	Approx. Hitch Weight
33RKL	2	7000	235-85R16E	6000	14000	33'-11"	11'-11"	101"	11775	2000
33RLDK	2	7000	235-85R16E	6000	14000	33'-11"	11'-11"	101"	11775	1900
33WRKD	2	7000	235-85R16E	6000	14000	33'-11"	11'-11"	101"	10840	2050
36CKSA	3	6000	235-85R16E	6000	18000	36'-11"	11'-11"	101"	11460	2140
36RKDS	3	6000	235-85R16E	6000	18000	36'-11"	11'-11"	101"	12000	2200
36RKSA	3	6000	235-85R16E	6000	18000	36'-11"	11'-11"	101"	12000	2200
36RKWB	3	6000	235-85R16E	6000	18000	36'-11"	11'-11"	101"	11470	2160
36RLDK	3	6000	235-85R16E	6000	18000	36'-11"	11'-11"	101"	12000	2200
36RLDS	3	6000	235-85R16E	6000	18000	36'-11"	11'-11"	101"	12000	2200
36RLWB	3	6000	235-85R16E	6000	18000	36'-11"	11'-11"	101"	12000	2200
36SADS	3	6000	235-85R16E	6000	18000	36'-11"	11'-11"	101"	12000	2200
36SKDS	3	6000	235-85R16E	6000	18000	36'-11"	11'-11"	101"	12000	2200
40CKDB	3	6000	235-85R16E	6000	18000	40'-7"	11'-11"	101"	13200	2800
40LSDK	3	6000	235-85R16E	6000	18000	40'-7"	11'-11"	101"	13172	2770
40RKSA	3	6000	235-85R16E	6000	18000	40'-7"	11'-11"	101"	13200	2800
40RKWB	3	6000	235-85R16E	6000	18000	40'-7"	11'-11"	101"	13200	2800
40RLDK	3	6000	235-85R16E	6000	18000	40'-7"	11'-11"	101"	13200	2800
40WRKD	3	6000	235-85R16E	6000	18000	40'-7"	11'-11"	101"	13200	2800

Lengths, Heights, Widths, Dry Weights and Hitch Weights are approximate.

The Mountain Aire boasts a distinguished profile in a towable vehicle,
1995 • Mountain Aire vehicle,
yet is available
for an attractive, affordable price.

Newmar 5th wheels have the beauty, quality and reliability that all Newmar products are known for, but with such handsome features and attention to detail, they have developed a reputation all their own.

Practical, yet decorative, this oak entertainment center provides convenient storage, yet takes up very little space from the living room.

Your comfort is enhanced in this luxuriously appointed bedroom.





In the Mountain Aire's grand interior,
the standard slideout makes the living,
1995 • Mountain Aire kitchen and
dining areas
as open and comfortable as your
home. Included among a long list of
fine features are name brand appli-
ances, stately cabinetry and plenty of
storage space.

Splendid design specifications and
uncompromised structural quality
combine with Newmar's famous
Old World Craftsmanship and New
World Technology for a mid-range
priced, luxury class vehicle.



The handsome Mountain Aire not only looks majestic with a new, distinctive design, but feels grand in all climates with high R-factor ratings that are standard in Newmar towables.

s 16" Center

Heavy Duty Aluminum Slideout Header

5/8" Foam Insulation

Double Rubber Seal

Molded Fiberglass Rear Cap

Torque Windows

Structure-wood Floor

2" x 3" Floor Framing Structure

Fresh Water & Holding Tanks In Floor

12" I-Beam Frame (Single Slideout Models)
16" I-Beam (Double Slideout in Living Room)

1 1/2" x 1 1/2" Aluminum C Channel 16" Center

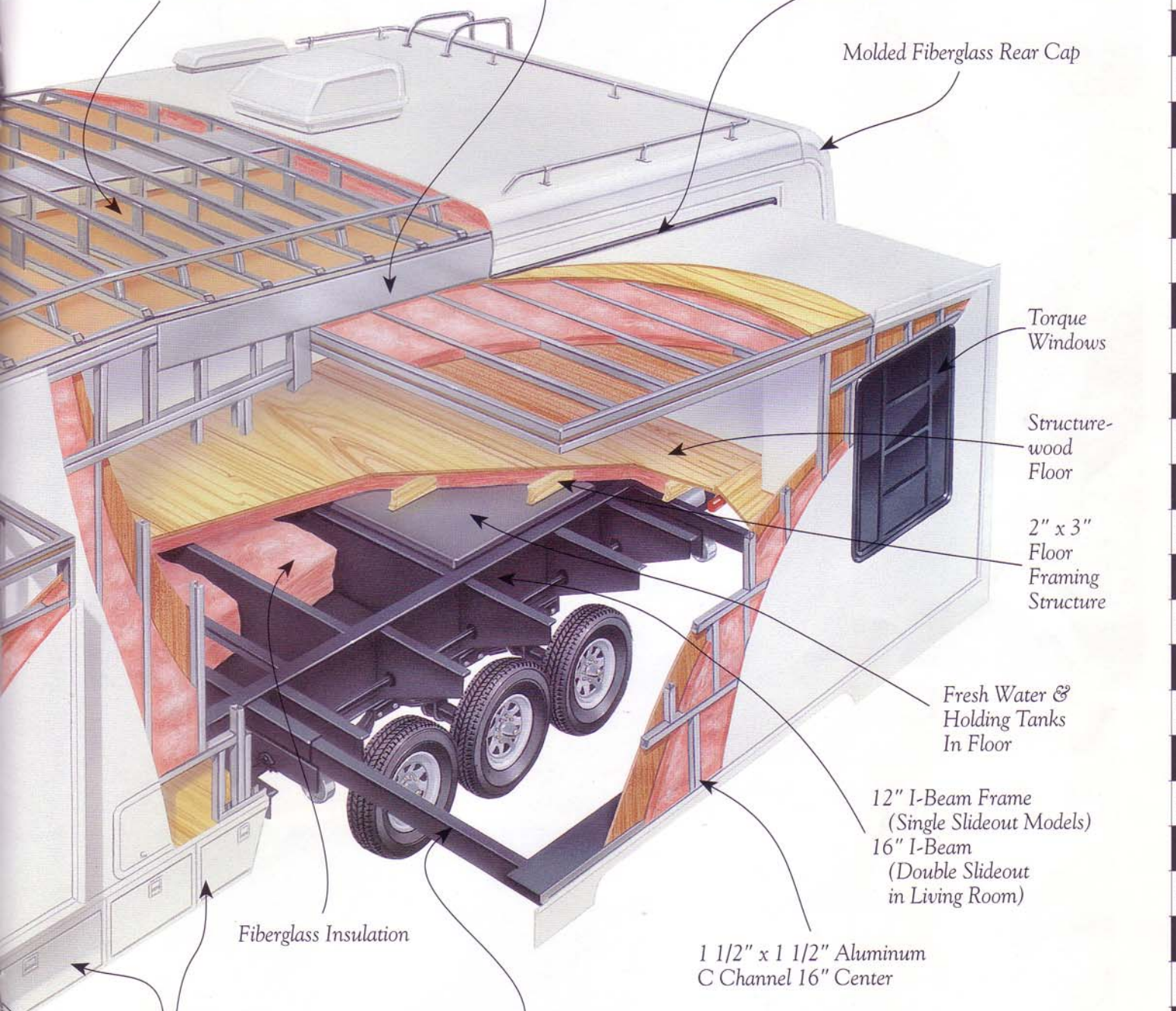
Fiberglass Insulation

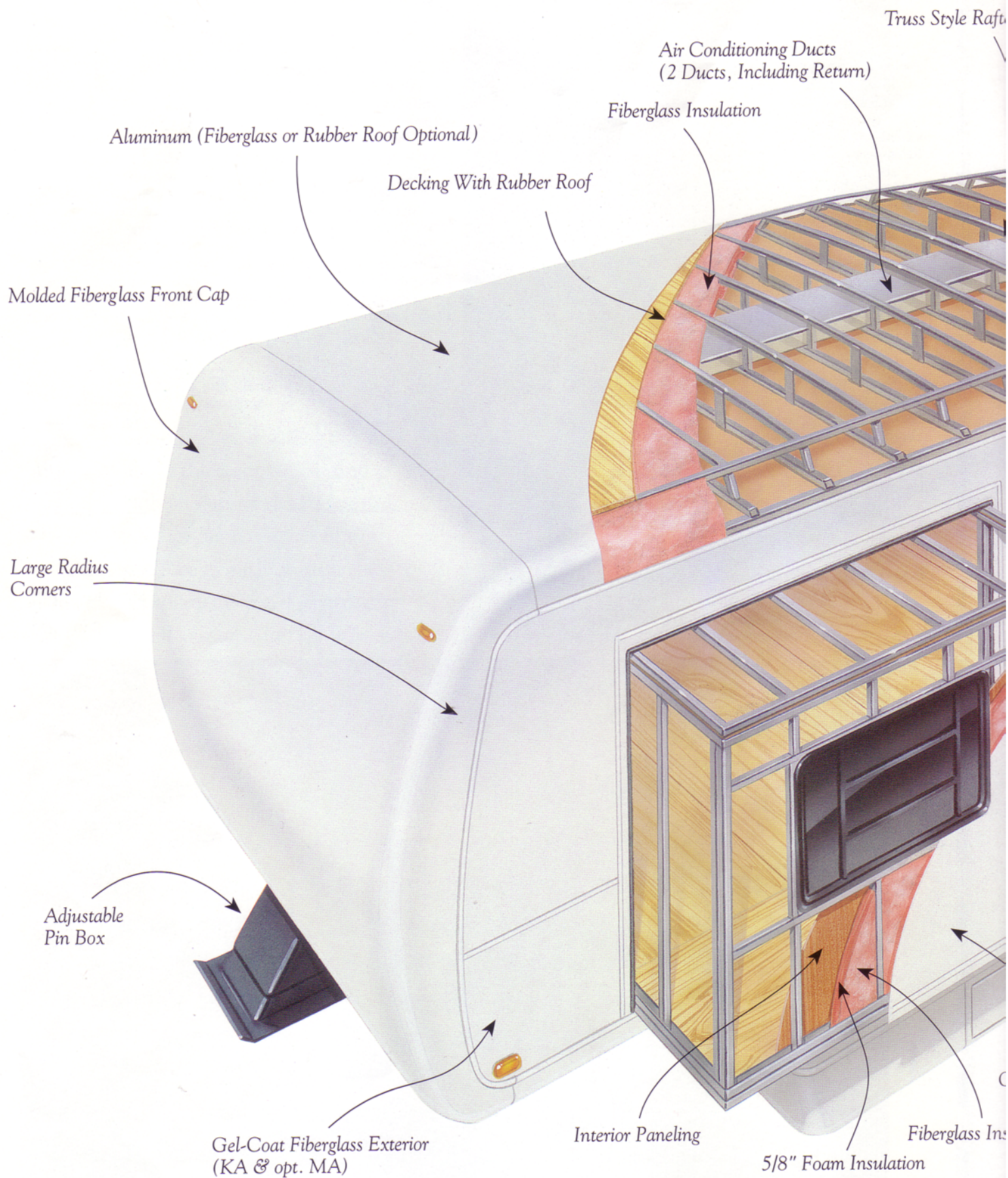
Exterior Frame Storage

Rack & Pinion Slideout System

over Slideout Option

ation





Kountry Aire • Standards & Options

Standards

Air Conditioner Central Brisk Air
13.5M BTU (1)
LP Gas Bottles 2-40# w/Auto Regulator
& See Level Gauges on Slides
Ceiling Fan
Refrigerator Dometic Double Door
2807
Refrigerator Front Hardwood Raised
Panel
Cabinetry Oak Hardwood w/Raised
Panel Cathedral Doors
Flexsteel Furniture
Easy Lube Equalizers
Frame Size 12" (I-Beam & Molded
Wrap Maximum Storage, Single
Slideout Models
Frame Size 16" I-Beam & Molded
Wrap Maximum Storage, Double
Slideout Models
Spare Tire
Suspension Triple Axle (36 & up)
Electrical Service 50 AMP
Lighting Fluorescent Recessed in Ceiling
Lights in Raised Bath Floor Storage Area
Lights in Wardrobes w/Automatic
Switches
Midship Side Turn Signals
Exterior Front & Rear Gel-Coated
Fiberglass End Caps
Exterior Sides Gel-Coated Fiberglass

Roof Painted Aluminum
Slideout Large w/Free Standing
Dinette (see floor plans)
Snaps for Fifth Wheel Jacks
Stabilizer for Fifth Wheel Pin (built-in)
Floor Covering, Carpet Staintech,
45 oz. 100% Nylon Plush Saxony
Window Treatment Day/Night
Pleated Shades, Lined Drapes &
Cornice Boards
Faucet for Kitchen Sink Single
Handle High Rise (Moen)
Faucet for Shower & Lavatory Single
Handle (Moen)
Stool China w/Spray Attachment
Tub/Shower Fiberglass w/Enclosure
Insulation Fiberglass R7 Sidewalls,
R19 Floor & Roof
Insulation Foam 5/8" Laminated in
Sidewalls & Ceiling
Rear Bumper w/Slide Out Tray
for Spare Tire
Structure, Aluminum Sidewalls & Roof
Structure, Widebody
Underbelly Enclosed Aluminum
w/Laminated 5/8" Foam
Exterior Lighted Acrylic Assist
Handle (at main entrance door)
Skylight in Bathroom w/Soft Shade
Step Triple

Options

Air Conditioner Central Brisk Air
15M BTU in place of 13.5M
Dishwasher (where available)
Icemaker Added to Dometic
Refrigerator
Microwave Oven Convection 30"
Sharp with 3-Burner Hot Plate
Washer/Dryer Prep with Floor Drain
Pan (where available)
Water Heater 10 Gallon Gas/Electric
w/Direct Spark Ignition
Cabinetry Bleached Oak Hardwood
Cabinetry Cherry Hardwood
w/ Raised Panel Cathedral Doors
Chair Flexsteel Glider/Recliner

Gen Prep (auto c/o, 12 Volt, remote
start wire & carbon monoxide
detector)
Roof & Radius Top Wrap Gel-
Coated Fiberglass (per foot)
Slideout in Cabover (w/Honeymoon
Suite) (where available)
Floor Covering, Hardwood Plank in
Kitchen Area
Water Filtering System w/Drink
Dispenser (kitchen)
Awning Side A & E 9000
Vent 12 Volt Fantastic 3-Speed
w/Power Opener in Kitchen
Window Glass Dark Tinted & Safety
(each)

Optional Floor Plans (where available)



Twin Bed



Honeymoon Suite
w/Slideout



Honeymoon Suite



Honeymoon Suite
w/Slideout & Vanity

See Dealer For Availability.

1995 • Kountry Aire • Specifications

Model	No. Axles	Axle Capacity	Tire	GAWR	GVWR	Approx. Length	Approx. Height	Approx. Width	Approx. Weight	Approx. Hitch Weight
33RKL	2	7000	235-85R16E	6000	14000	33'-11"	11'-11"	101"	11775	2000
33RLDK	2	7000	235-85R16E	6000	14000	33'-11"	11'-11"	101"	11775	1900
33WRKD	2	7000	235-85R16E	6000	14000	33'-11"	11'-11"	101"	11858	1900
36CKSA	3	7000	235-85R16E	6000	18000	36'-11"	11'-11"	101"	13390	2100
36RKDS	3	7000	235-85R16E	6000	18000	36'-11"	11'-11"	101"	13390	2100
36RKSA	3	7000	235-85R16E	6000	18000	36'-11"	11'-11"	101"	11800	2100
36RKWB	3	7000	235-85R16E	6000	18000	36'-11"	11'-11"	101"	12627	2760
36RLDK	3	7000	235-85R16E	6000	18000	36'-11"	11'-11"	101"	12440	3000
36RLDS	3	7000	235-85R16E	6000	18000	36'-11"	11'-11"	101"	14433	3100
36RLWB	3	7000	235-85R16E	6000	18000	36'-11"	11'-11"	101"	13390	2100
36SADS	3	7000	235-85R16E	6000	18000	36'-11"	11'-11"	101"	13390	2100
36SKDS	3	7000	235-85R16E	6000	18000	36'-11"	11'-11"	101"	13390	2100
40CKDB	3	7000	235-85R16E	6000	18000	40'-7"	11'-11"	101"	12740	2400
40LSDK	3	7000	235-85R16E	6000	18000	40'-7"	11'-11"	101"	13380	2940
40RKSA	3	7000	235-85R16E	6000	18000	40'-7"	11'-11"	101"	14200	2500
40RKWB	3	7000	235-85R16E	6000	18000	40'-7"	11'-11"	101"	13900	2750
40RLDK	3	7000	235-85R16E	6000	18000	40'-7"	11'-11"	101"	13647	3300
40WRKD	3	7000	235-85R16E	6000	18000	40'-7"	11'-11"	101"	13000	2660

Lengths, Heights, Widths, Dry Weights and Hitch Weights are approximate.



Newmar's Kountry Aire is
breathtaking in contrast to
1995 • Kountry Aire comparable
5th Wheel

homes on the market.
Known as the best "full
timer's" vehicle because of
its built-in quality, durabil-
ity and top-notch detailing,
the Kountry Aire is the first
choice of return customers.



Not only one, but two slideouts (one standard & one optional) are featured on the Kountry Aire towable, thus providing more comfort in living space, and the feeling that this is your "home away from home."

1995 Kountry Aire • Mountain Aire 5th Wheel

There's a road where tradition and technology meet, and it's off the beaten path in the heart of Amish Country in Northern Indiana. Newmar Corporation has called the small town of Nappanee "home" since 1967, and our production facilities house the careful creation of the Newmar family of motorized and towable vehicles. It is a workplace where Old World values and craftsmanship are steadfastly held by the employees, yet transferred into Newmar's leading-edge technology and engineered innovation and quality.

Not only are our people experienced designers, builders, and marketers of our products, they are seasoned travelers...and they relate to each model they're producing, as if it were their own. Some of our best product ideas come from employees; if there's a better way to do something, they'll find it.

Travel with us off the beaten path of ordinary and mediocre RV's. Imagine relaxing in the comfort and luxury of your Newmar recreational vehicle.

Join us in Newmar's "American Tradition of Excellence," and start your own traditions...

One standard and one optional slideout are featured on this Kountry Aire towable, thus providing more comfort in living space, and the feeling that this is your "home away from home."



The handsome Mountain Aire not only looks majestic with a new, distinctive design, but feels grand in all climates with high R-factor ratings that are standard in Newmar towables.



*5 Year Limited Warranty on Superstructure.

Newmar Corporation warrants the Superstructure which includes the following: the I-beam frame; the aluminum framing in the sidewalls and roof; and the slideout mechanism. If any part of the Superstructure fails to perform properly within 5 years from the date of purchase because of faulty workmanship or materials supplied by Newmar, during the ownership of the original buyer, it will be repaired without charge for either parts or labor by Newmar providing the proper claim procedures are followed. All other items excluding the Superstructure are covered under the standard Newmar 1 Year Limited Warranty. See Owner's Manual for details.

Newmar Kountry Klub

Share in the benefits of joining the Newmar Kountry Klub, "family" with a network of chapters throughout the United States and Canada.

All you need for eligibility is to be the proud owner of any one of the fine Newmar motorhomes and towables.



1995 Kountry Aire 5th Wheel



1995 Mountain Aire 5th Wheel

"Our many employees wish to say thank you for your sincere interest in our family of quality recreational vehicles.

All of us love a winner; so for 1995, we, at Newmar Corporation, have dedicated ourselves to building the best product available for the best price possible."

Mahlon A. Miller
Chairman of the Board

Compliments of:



An American Tradition of Excellence

355 N. Delaware St.
P.O. Box 30
Nappanee, IN 46550-0030
(219) 773-7791 • Fax (219) 773-2895

Some features shown in our literature are optional. Colors and finishes are photographic representations and may appear differently when viewing actual materials. Please see your dealer for actual samples and specifications.