

1995 American Star

American Star

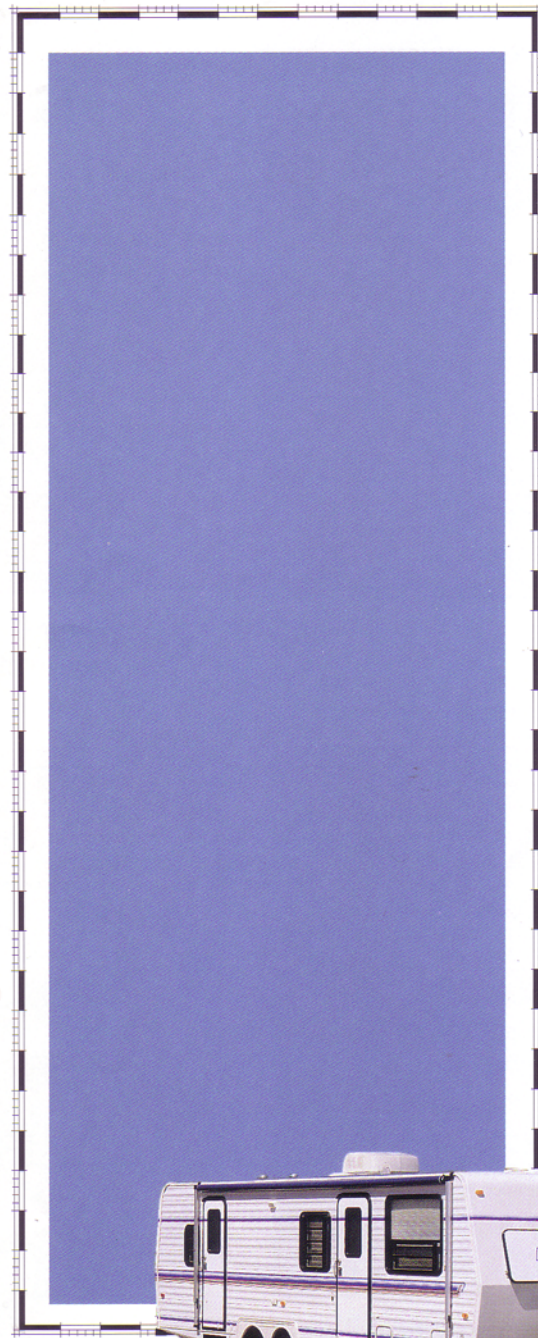
American Star

American Star

American Star

American Star

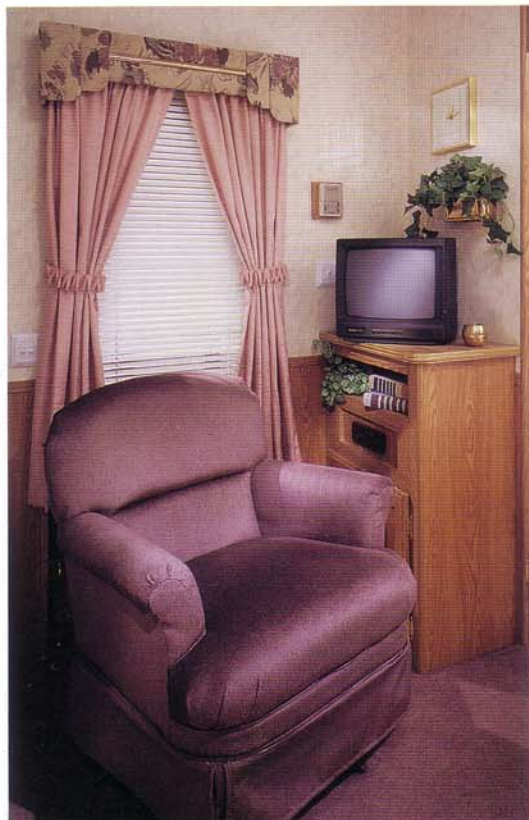
American Star



5th Wheel • Travel Trailers by Newmar



Come to dinner at the (oak) dinette set and daydream on the comfortable sofa afterwards.



See the fine handcrafted wood floor and cabinets, as well as the special design detailing in brass light fixtures and hardware.

Let us entertain you with this custom entertainment center and comfortable rocking armchair.

1995 ♦ American Star Travel Trailer

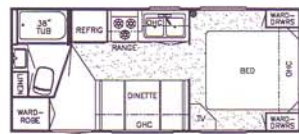
This American Star Travel Trailer is one its owners would be proud to call their own, no matter where they're from, or where they'd like to go! Newmar Corporation has been building an "American Tradition of Excellence" for more than 27 years. Not only are Newmar's people experienced



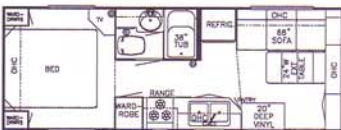
designers, builders and marketers of motorhomes, they are seasoned travelers themselves. They relate to each model they're producing with pride as if it were their own. Travel with us off the beaten path of ordinary and mediocre RV's. Start some traditions of your own!



19 RB



22 WAB



25 CB



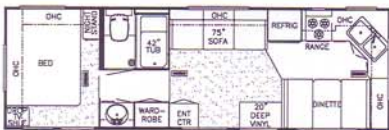
25 RB



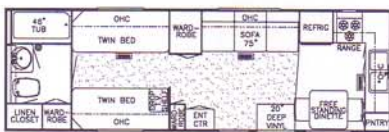
25 RK



26 DB



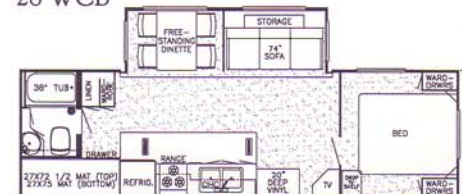
28 FK



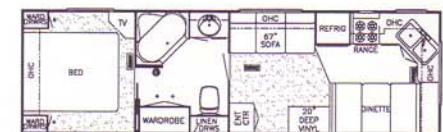
28 RBTB



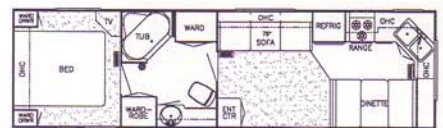
28 WCB



30 DBWS



30 FKLB



32 AK



32 CFKS

Specifications and floor plans are subject to change at Newmar's discretion without written notice or obligation.

1995 ♦ American Star Standards

Standards

LP Gas Bottles 2-30# with Automatic Regulator
Range Wedgewood 21" 3-Burner with Oven
Refrigerator Dometic Double Door 2611.2
Water Heater 6 Gallon Gas/Electric with Reigniter
Flexsteel Furniture
Converter 40 AMP with Charger
Electrical Service 30 AMP
Bedsread Quilted with Matching Shams (1)
Floor Covering, Vinyl in Kitchen & Bath
Window Treatment Mini Blinds (throughout)
Tub/Shower Surround with Enclosure
Winterize Convenience Package (with water heater bypass)
Underbelly Enclosed with Fiberglass Insulation (w/slideout models)

Radius Entrance Door with Deadbolt
Vent 12 Volt in Bath Area with Wall Switch
Windows Radius Torque

Option Packages

A5 Preferred Equipment

Air Conditioner 13.5 BTU Brisk Air
Bed Queen (60" x 75") (where available)
Microwave Oven (Audiovox)
Rear Awning (where applicable)
Side Awning
TV Cable Ready

C5 XL Interior Preferred Equipment

Beveled Mirror Framed Wall Clock
Complexion Light in Bathroom w/ Wall Switch

Decorative Wall Lights in Living Room & Bedroom
Kitchen & Lavatory Faucets Single Handle
Oak Accent Trim Around Ceiling Lights
Oak Hardwood Raised Panel Overhead Cabinet Doors
Refrigerator Front Hardwood Raised Panel
Sofa Throw Pillows
Tiffany Style Dinette Ceiling Light

M5 XL Exterior Preferred Equipment

Bright Lug Nuts
Bumper Cover Aluminum
Exterior Gel-Coated Fiberglass End Caps (not available on FL floor plans)
Insulation Polar Pak (R7 sidewalls & floor, R11 roof)
Stabilizer Jacks (1 pr FW) (2 pr TT)

Options

Air Conditioner Ducted 13.5M in Place of A5 Air
Refrigerator Dometic Double Door 2807.2
Bed Twins (32" x 75") (where available)
Chair Flexsteel Swivel Rocker
Sofa Flexsteel 68" Hide-A-Bed (where available)
Shock Absorbers
Jack 12 Volt Powered
Roof Rack & Ladder
Floor Covering, Hardwood Plank in Kitchen Area
Tub/Shower Fiberglass

1995 • American Star • 5th Wheel Specifications

Model	No. Axles	Axle Capacity	Tire	GAWR	GVWR	Approx. Length	Approx. Height	Approx. Width	Approx. Weight	Approx. Hitch Weight
ASFW22FB	2	3500	205-75R15C	3500	7900	22'- 6"	10'- 7"	96"	5040	850
ASFW24RL	2	3500	205-75R15C	3500	8300	24'-11"	11'- 7"	96"	5980	780
ASFW25BB	2	3500	205-75R15C	3500	7900	24'-11"	11'- 7"	96"	6200	900
ASFW25WRKD	2	5200	225-75R15D	5000	10400	25'-11"	11'- 7"	96"	7890	1410
ASFW26RK	2	3500	205-75R15C	3500	7900	26'-11"	11'- 7"	96"	6328	1210
ASFW28WDSK	2	5200	225-75R15D	5000	10400	28'- 3"	11'-11"	96"	8535	1515
ASFW28WRKD	2	5200	225-75R15D	5000	10400	28'- 3"	11'-11"	96"	8713	1562
ASFW30RLWB	2	5200	225-75R15D	5000	10400	30'- 1"	11'-11"	96"	9000	1500
ASFW31RKWB	2	5200	225-75R15D	5000	10400	30'- 9"	11'-11"	96"	9170	1623
ASFW32FL	2	5200	225-75R15D	5000	10400	32'- 1"	11'- 7"	96"	8000	1400
ASFW33DBLS	2	5200	225-75R15D	5000	11000	33'-11"	11'-11"	96"	9200	1700
ASFW33WRKD	2	5200	225-75R15D	5000	11000	33'-11"	11'-11"	96"	9200	1700

1995 • American Star Travel Trailer • Specifications

ASTT19RB	2	3500	205-75R15C	3500	7000	19'-10"	10'- 3"	96"	4560	600
ASTT22WAB	2	3500	205-75R15C	3500	7000	21'- 6"	10'- 3"	96"	5000	600
ASTT25CB	2	3500	205-75R15C	3500	7000	25'- 6"	10'- 3"	96"	5188	736
ASTT25RB	2	3500	205-75R15C	3500	7000	25'- 6"	10'- 3"	96"	5086	594
ASTT25RK	2	3500	205-75R15C	3500	7000	25'- 6"	10'- 3"	96"	5340	560
ASTT26DB	2	3500	205-75R15C	3500	7900	25'- 6"	10'- 3"	96"	5750	600
ASTT28FK	2	3500	205-75R15C	3500	7900	28'-10"	10'- 3"	96"	5580	600
ASTT28RBTB	2	3500	205-75R15C	3500	7900	28'-10"	10'- 3"	96"	5813	600
ASTT28WCB	2	3500	205-75R15C	3500	7900	28'-10"	10'- 3"	96"	5540	600
ASTT30DBWS	2	5200	225-75R15D	5000	10400	30'- 6"	10'-11"	96"	8000	900
ASTT30FKLB	2	5200	225-75R15D	5000	10400	30'- 6"	10'- 3"	96"	6205	780
ASTT32AK	2	5200	225-75R15D	5000	10400	32'- 1"	10'- 4"	96"	6488	750
ASTT32CFKS	2	5200	225-75R15D	5000	10400	32'- 1"	10'-11"	96"	8500	900

Lengths, Heights, Widths, Dry Weights and Hitch Weights are approximate.

1995 ♦ American Star 5th Wheel

This 5th Wheel brings to reality the "things dreams are made of."

Built by employees who are dedicated to quality and dependability, the American Star is presented with enough choices to fulfill most anyone's desires. Numerous floor plans and interior decors have been



specially styled to make your dreams come true. Open the door to see the spacious living area created by Newmar's innovative slideout and feel the comfort of the specially designed furniture.

Dreams really can come true with a Newmar 5th Wheel or Travel Trailer!



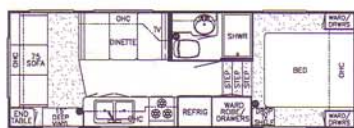
22FB



26 RK



31 RKWB



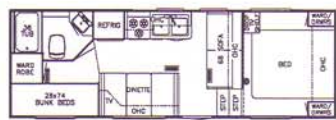
24 RL



28 WDSK



32 FL



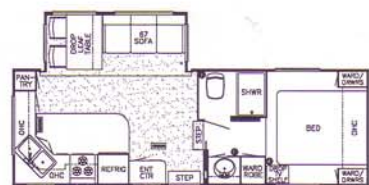
25 BB



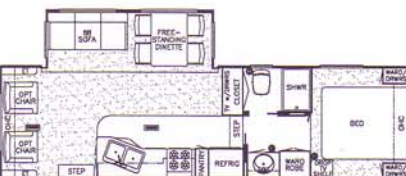
28 WRKD



33 DBLS



25 WRKD



30 RLWB



33 WRKD



1995 • American Star 5th Wheel



1995 • American Star Travel Trailer

Our many employees wish to say thank you for your sincere interest in our family of quality recreational vehicles.

All of us love a winner; so for 1995, we at Newmar Corporation, have dedicated ourselves to building the best product available for the best price possible.

Mahlon A. Miller
Chairman of the Board

Compliments of:



An American Tradition of Excellence

335 N. Delaware St. • P.O. Box 30
Nappanee, IN 46550-0030
(219) 773-7791 • FAX (219) 773-2895