

1995 London Aire

London Aire

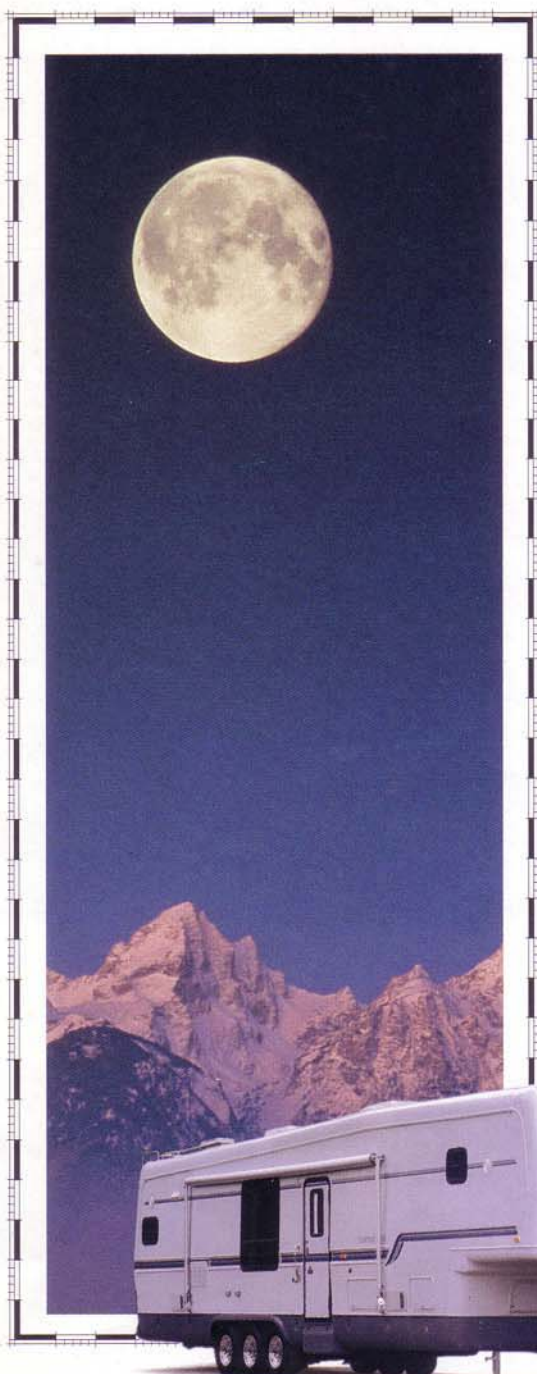
London Aire

London Aire

London Aire

London Aire

London Aire



Diesel Pusher • 5th Wheel • by Newmar

There's a road where tradition and technology meet, and it's off the beaten path in the heart of Amish Country in Northern Indiana. Newmar Corporation has called the small town of Nappanee "home" since 1967, and their production facilities house the careful creation of the Newmar family of motorized and towable vehicles. It is a workplace where Old World values and craftsmanship are steadfastly held by its employees, yet transferred into Newmar's leading-edge technology and engineered innovation and quality.

Come see us and see for yourself our employee's commitment to quality. Plant tours are available weekdays from 10 a.m. and 2 p.m. EST. Not only are our people experienced designers, builders, and marketers of our RVs, they are seasoned travelers as well... relating to each model they're producing as if it were their own. Our employees have the common conviction that we are building on an American tradition of quality, and Newmar Corporation has been successfully doing so for more than 27 years.

Travel with us off the beaten path of the ordinary. Join us in Newmar's "American Tradition of Excellence" and start your own traditions...

[Newmar Kountry Klub]

Share in the benefits of joining the Newmar Kountry Klub, a "family" with a network of chapters throughout the United States and Canada. All you need for eligibility is to be the proud owner of any one of the fine Newmar motorhomes and towables.



The sliding L.P. tank tray proves to be a valuable feature. No more fumbling with valves and fittings when changing tanks.



If you ever had to struggle to get to your generator, you will really appreciate what London Aire offers as an alternative. This sliding generator rack is yet another innovation designed to make your life easier.



Heavy-duty 16-inch wheels and oversized brakes let you tow in comfort.



London Aire • Lifetime Limited Warranty on Superstructure

Newmar Corporation warrants the Superstructure which includes the following: the I-beam frame; the aluminum framing in the sidewalls and roof. If any part of the Superstructure fails to perform properly because of faulty workmanship or materials supplied by Newmar, during the ownership of the original buyer, it will be repaired without charge for either parts or labor by Newmar providing the proper claim procedures are followed. All other items, excluding the Superstructure, are covered under the standard Newmar 1 Year Limited Warranty. See Owner's Manual for details.

1995 • London Aire • Diesel Pusher Specifications

Model	Chassis	Engine	Drive Fuel		Front Gaur	Drive Gaur	Gvwr	Gcur	Unloaded		Exterior			Interior		Grey Tank	Sewage Tank	Water Tank	Furnace
			Ratio	Cap. (Gal.)					Vehicle Weight	Wheel Base	Length	Width	Height	Width	Height				
LP3655	Spartan	300	4.63	100	10400	19000	29400	31000	22025	236	36'-10"	101"	11'-8"	93"	78"	55G	55G	105	40000
LP4010	Spartan	300	4.63	100	10400	19000	29400	31000	22025	276	40'-0"	101"	11'-8"	93"	78"	55G	55G	105	40000
LP4055	Spartan	300	4.63	100	10400	19000	29400	31000	23750	276	40'-0"	101"	11'-8"	93"	78"	55G	55G	105	40000
LP4056	Spartan	300	4.63	100	10400	19000	29400	31000	24470	276	40'-0"	101"	11'-8"	93"	78"	55G	55G	105	40000
LP4060	Spartan	300	4.63	100	10400	19000	29400	31000	24470	276	40'-0"	101"	11'-8"	93"	78"	55G	55G	105	40000

Lengths, Heights, Widths and Dry Weights are approximate.

1995 • London Aire • 5th Wheel Specifications

Model	No. Axles	Axle Capacity	Tire	GAWR	GVWR	Approx. Length	Approx. Height	Approx. Width	Approx. Weight	Approx. Hitch Weight
LAFW36CKSA	3	7000	235-85R16E	6000	18000	36'-11"	11'-11"	101"	14700	2800
LAFW36RKDS	3	7000	235-85R16E	6000	18000	36'-11"	11'-11"	101"	14700	2800
LAFW36RKSA	3	7000	235-85R16E	6000	18000	36'-11"	11'-11"	101"	14700	2800
LAFW36RKWB	3	7000	235-85R16E	6000	18000	36'-11"	11'-11"	101"	14700	3160
LAFW36RLDK	3	7000	235-85R16E	6000	18000	36'-11"	11'-11"	101"	14700	2800
LAFW36RLDS	3	7000	235-85R16E	6000	18000	36'-11"	11'-11"	101"	14700	2800
LAFW36RLWB	3	7000	235-85R16E	6000	18000	36'-11"	11'-11"	101"	14700	2800
LAFW36SADS	3	7000	235-85R16E	6000	18000	36'-11"	11'-11"	101"	14700	2800
LAFW36SKDS	3	7000	235-85R16E	6000	18000	36'-11"	11'-11"	101"	14700	2800
LAFW40CKDB	3	7000	235-85R16E	6000	18000	40'-7"	11'-11"	101"	14900	2900
LAFW40LSDK	3	7000	235-85R16E	6000	18000	40'-7"	11'-11"	101"	14900	2800
LAFW40RKSA	3	7000	235-85R16E	6000	18000	40'-7"	11'-11"	101"	14740	2860
LAFW40RKWB	3	7000	235-85R16E	6000	18000	40'-7"	11'-11"	101"	15520	3140
LAFW40RLDK	3	7000	235-85R16E	6000	18000	40'-7"	11'-11"	101"	14200	2500
LAFW40WRKD	3	7000	235-85R16E	6000	18000	40'-7"	11'-11"	101"	15520	3340
LAFW40CKDA	3	7000	235-85R16E	6000	18000	40'-7"	11'-11"	101"	14900	2900

Lengths, Heights, Widths, Dry Weights and Hitch Weights are approximate.



36 RLWB



40 LSDK



36 SADS



40 RKSA



36 SKDS



40 RKWB



40 CKDA



40 RLDK



40 CKDB



40 WRKD

Prices, specifications and floor plans are subject to change at Newmar's discretion without prior written notice or obligation.

1995 • London Aire • 5th Wheel

Standards

Air Conditioning & Heating

Penguin Central Air Conditioner 13.5M BTU w/Heat Strip
LP Gas Bottles 2-40# w/Auto Regulator & See Level Gauges On Slides

Appliances & Accessories

Microwave Oven Convection 30" Sharp (where available)
Refrigerator Dometic Side by Side 7030 (where available)
TV Color 25" w/Remote Control
VCR
Water Heater 10 Gallon Gas Electric w/Direct Spark Ignition

Cabinets & Furniture

Cabinet Doors w/Positive Catches & Knife Hinges
Chairs Flexsteel Glider/Recliner
Corian Countertop & Lavatory Bowl in Bath
Corian Countertop in Kitchen w/Recessed Stainless Steel Sink
Flexsteel Furniture

Chassis Features

Frame Size 16" I-Beam & Fiberglass Wrap Maximum Storage
Suspension Triple Axle Mor Ryde w/Heavy Duty Shock Absorbers
Wheels Polished Aluminum

Electrical Features

Lights Exterior Security (2 on each side)

Exterior Features

Exterior Front & Rear Gel-Coated Fiberglass
Roof & Radius Top Wrap Gel-Coated Fiberglass
Roof Rack, Handrails & Molded Recessed Steps In Rear Cap
Slideout In Cabover (with honeymoon suite) (where available)
Stone Guard Pull Down Vinyl Recessed In Front Fiberglass Cap

Interior Features

Window Garnish (residential style)

Plumbing/Bath Features

Faucet For Kitchen Sink w/ Pullout Spout (Moen)

Construction Features

Structure, Contoured Sidewalls w/Recessed Belt
Structure, Widebody

Windows, Awnings & Vents

Rear Awning Recessed w/12 Volt Powered Operation (where available)
Keyless Entry Door w/Patented Automatic Retracting Door Stop (1)

Options

Air Conditioning & Heating

Air Conditioner Central Penguin 13.5 BTU w/Heat Strip (extra)

Appliances & Accessories

Icemaker (110 Volt)
Washer/Dryer Sears w/Floor Drain Pan & Pullout Shelf (where available)

Cabinets & Furniture

Cabinetry Bleach Oak Hardwood
Cabinetry Oak Hardwood
Vanity Center

Electrical Features

Gen. 6.5 KW Onan on Slides, Changeover & Battery

Exterior Features

Jacks Stabilizers 12 Volt Power
Twins A & E in Place of Standard

Interior Features

Floor Covering, Ceramic Tile in Bath Area

Windows

Window Glass Dark Tinted & Safety



36 CKSA



36 RKWB



36 RKDS



36 RLDK



36 RKSA



36 RLDS



when the fifth wheel was named "best buy" by Consumer Digest. Since then, each model year has been even further enhanced with innovative interior and exterior design features that give Newmar the name "better than best."

London Aire • London Aire • London Aire • London Aire • London Aire • London Aire



The optional hidden-leaf dining table allows you to expand your dining comfort.

You know you're someone special when you sit down in front of this vanity mirror and revel in the luxurious bedroom area that surrounds you.

1995 London Aire 5th Wheel

You've already earned your fine reputation, and deserve to enjoy the best the "experts in fifth wheels" can deliver, the distinguished London Aire by Newmar Corporation.

London Aire's growing reputation for quality and elegance was solidified in 1992,



London Aire • London Aire • London Aire • London Aire • London Aire • London Aire



Newmar Corporation is a proud innovator of the 5th wheel slideout and continues to provide standard slideouts that function smoother and quieter than any in the industry.

Preparing a meal in this beautifully designed kitchen is a culinary delight, especially enhanced with name brand appliances, spacious countertop and hardwood cabinetry.





Exterior Features

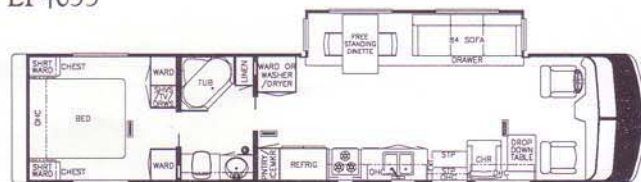
Convex Exterior Mirrors
w/Remote Control, Defrost &
Turn Signals
Front & Rear Gel-Coated
Fiberglass Caps
Exterior Sides Gel-Coated
Fiberglass
Gel-Coated Fiberglass Roof &
Radius Wrap

Exterior Features (continued)

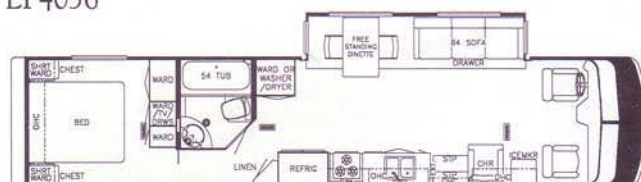
Hitch w/Wire Connector
Jacks Hydraulic Leveling
w/Automatic Control
Mud Flaps (front & rear)
Slideout w/Free Standing Dinette
(see floor plans)
Undercoating



LP4055



LP4056



LP4060

Interior Features

Quilted Bedspread w/Matching
Shams & Accent Pillow
Soft Touch Woven Ceiling
Decorative Wall Clock & Mirror
45 oz., 100% Nylon, Plush Saxony
Staintech Carpet w/High
Density Pad
Hardwood Plank Floor in Kitchen
Floor Mats at Front Seats
Two Corian Sink Covers
Smoke Detector & 10BC Fire
Extinguisher
Waste Basket & Convenience
Light in Kitchen
Residential Style Window Garnish
Window Treatment Day/Night
Soft Shades

Plumbing/Bath Features

Brass Bath Accessories
Moen Faucet for Kitchen Sink
w/Pull-out Spout
Moen Single Handle Faucet for
Shower & Lavatory
Monitor Panel
Sewage Holding Tank Rinse
China Stool w/Spray Attachment
Fiberglass Tub/Shower w/Enclosure
Water Filtering System w/Drink
Dispenser (kitchen)
Water Hose w/Auto Rewind &
City Water Hook-Up
Demand Water System w/12 Volt
Pump & 5/8" Polybutylene
Water Lines
Winterize Convenience Package
(w/water heater bypass)

Construction Features

Floor Decking Structurewood
Fiberglass Insulation R7 Sidewalls
& Floor, R19 Roof
1/4" Foam Board Insulation
Exterior Roof
5/8" Foam Insulation Laminated
in Sidewalls & Ceiling
Structure, Aluminum Framed
Sidewalls & Roof (16" O.C.)
Structure, Contoured Sidewalls
w/Recessed Belt Line
102" Widebody

Windows, Awnings & Vents

A & E 9000 Window Awning
(where available)
A & E 10,000 Side Awning
Door Bell
Driver's Side Door w/Power Window
& Passenger Side Panel
Entrance Door Stepwell Tread Liner
Exterior Lighted Acrylic Assist
Handle (at main entrance door)
Skylight in Bathroom w/Soft Shade
Step, 12 Volt Automatic
Fantastic 3-Speed Vent w/Power
Opener in Bath & Kitchen
Windows Radius Safety Glass,
Dark Tinted

Options

Appliances & Accessories

Sears Washer/Dryer w/Pull-Out Shelf

Cabinets & Furniture

Bleached Oak Hardwood Cabinetry
Oak Hardwood Cabinetry
Flexsteel Chair High Back Recliner
Leather/Vinyl
Seat on Passenger Side w/Footrest
Added
Flexsteel Sofa Leather/Vinyl

Interior Features

Ceramic Tile Floor Covering in
Bath Area

1995 London Aire Diesel Pusher

Standards

Air Conditioning & Heating

Penguin Central Air Conditioner
13.5M BTU w/Heat Strip
In Floor Ducted Heat
32 Gallon LP Tank
LP Leak Detector

Appliances & Accessories

Carbon Monoxide Detector
CB Radio
Coffee Maker
Norcold AC/DC Freezer (on slides)
in Exterior Compartment
Air Horn
Icemaker (110 Volt)
Sharp 30" Convection Microwave
Oven w/Power Vent & Surge
Protector
Portable Vacuum
Matching Countertop Range
Cover
Recessed Wedgewood High
Output 3-Burner Plate
Rear View Monitor System
Refrigerator Dometic Double
Door 3807 (see floor plan 3655)
Refrigerator Dometic Side by Side
7030 (N/A in 3655)
Hardwood Raised Panel
Refrigerator Door Inserts
Safe
Security System
Stereo AM/FM Cassette w/Clock
in Dash & Bedroom
Telephone Hookup w/2 Jacks &
Cellular Antenna
TV Antenna w/Power Booster &
2 Jacks
13" AC Color TV w/Remote
Control in Bedroom
19" AC Color TV w/Remote
Control in Front Overhead
Exterior TV Jack on Door Side
TV Video Switch Box
VCR
Washer/Dryer Prep w/Floor Drain
Pan (where available)

Cabinets & Furniture

Queen Bed (60" x 75")
w/Luxurious Pillow Top
Mattress
Cabinet Doors w/Positive Catches
& Knife Hinges
Solid Cherry Cabinetry w/Raised
Panel Cathedral Doors
Corian Countertop & Lavatory
Bowl in Bath
Corian Countertop in Kitchen
w/Recessed Stainless Steel Sink
Corian Countertop Extension
(where available)
Drawers w/Metal Guides & Side
Rollers
6-Way Power Flexsteel Leather/
Vinyl Front Seats w/Power
Lumbar Support
Lifts for Convenient Storage
Under Bed
Molded Silverware Divider Tray
Pullout Pantry (where available)
Flexsteel Furniture

Chassis Features

300 HP Spartan Mountain Master
Chassis w/Raised Rails
1000 Watt Engine Block Heater
Air Brakes w/Auto Slack Adjuster
Front & Rear
Anti-Lock Braking System
Back-Up Alarm
Cruise Control
High Output-Blend Air Dash
Heater/Air Conditioner
Intermittent Wipers w/Headlight
Convenience Switch
Pack 8 Exhaust Engine Brake
Recessed Fuel Fill w/Locking Door
(on each side)
Tilt & Telescope Steering Wheel
Self-Leveling Air Ride Suspension
Polished Aluminum Wheels

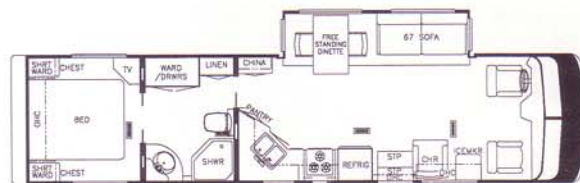


Electrical Features

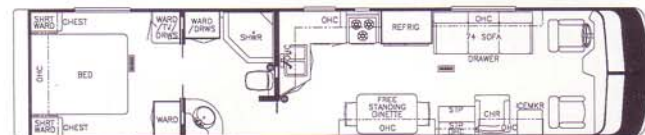
Battery Disconnect (coach &
chassis batteries w/2 switches)
Thermoil Auxiliary Batteries
(4-6 Volt)
50 AMP Electrical Service
w/12 Volt Power Rewind Cord
7.5 KW Onan (diesel) Generator
on Slides w/Auto Changeover
Heart Freedom 20 Inverter/
Converter
Exterior Security Lights
(2 on each side)
Remote Control Spotlight
Fluorescent Lighting Recessed
in Ceiling
Docking Lights

Electrical Features (continued)

Fog Lights
Lights in Exterior Storage
Compartments
Lights in Wardrobes w/Automatic
Switches
Interior Courtesy Lights
Midship Side Turn Signals
Recepts 110 Volt GFI (interior &
exterior)
Switch for Emergency Engine Start



LP3655



LP4010



This is the unparalleled motorhome everyone is talking about. London Aire owners are an exclusive group in their own right, and deserve the rewards of good taste and enjoying superlative interior and exterior appointments. The "rumors" that London Aire is unequalled in the industry - they're all true.

London Aire • London Aire • London Aire • London Aire • London Aire • London Aire



The exceptional detail in this bedroom scene is just one example of the many luxurious decors you can choose from.

Ease into the optional leather recliner and feel your worries slip away.

1995 London Aire Diesel Pusher

Imagine yourself in your luxurious London Aire motorhome. Now it's your turn to leave the beaten path behind and become the leader that other motorhome owners want to follow.

You're comfortable in a class of your own. So why not consider turning your dreams into reality and becoming the proud owner of an elegant and sophisticated London Aire, specially built to suit your imagination.



London Aire • London Aire • London Aire • London Aire • London Aire • London Aire



The sharp-looking exterior and distinctive new detailing of the powerful London Aire Diesel Pusher leaves a striking impression.

Engineers and designers teamed up to ensure the driver's comfort and ease of handling. The London Aire provides unmatched strength and rigidity necessary for smooth travel and livability.



• 1995 London Aire •



1995 London Aire Diesel Pusher.



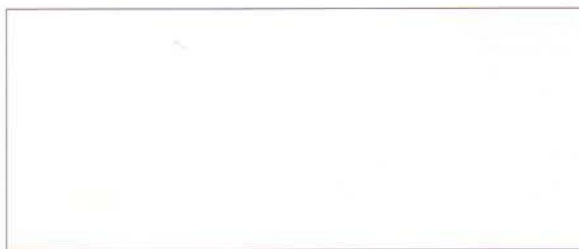
1995 London Aire 5th Wheel.

"Our many employees wish to say thank you for your sincere interest in our family of quality recreational vehicles.

All of us love a winner; so for 1995, we, at Newmar Corporation, have dedicated ourselves to building the best product available for the best price possible."

Mahlon A. Miller
Chairman of the Board

Compliments of:



An American Tradition of Excellence

355 N. Delaware St.
P.O. Box 30
Nappanee, IN 46550-0030
(219) 773-7791 • Fax (219) 773-2895

Some features shown in our literature are optional. Colors and finishes are photographic representations and may appear differently when viewing actual materials. Please see your dealer for actual samples and specifications.