

1995 Kountry Aire  
Mountain Aire  
Kountry Star  
Dutch Star



Motorhomes by Newmar





1995 Kountry Aire



1995 Mountain Aire



1995 Kountry Star



1995 Dutch Star



1995 Dutch Star Diesel Pusher

"Our many employees wish to say thank you for your sincere interest in our family of quality recreational vehicles.

All of us love a winner; so for 1995, we, at Newmar Corporation, have dedicated ourselves to building the best product available for the best price possible."

*Mahlon A. Miller*

Mahlon A. Miller  
Chairman of the Board

Compliments of:



An American Tradition of Excellence

355 N. Delaware St.  
P.O. Box 30  
Nappanee, IN 46550-0030  
(219)-773-7791 • Fax (219) 773-2895

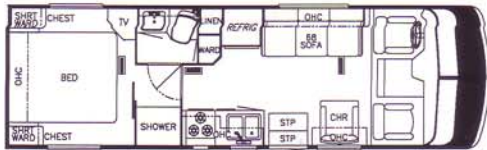
Some features shown in our literature are optional. Colors and finishes are photographic representations and may appear differently when viewing actual materials. Please see your dealer for actual samples and specifications.



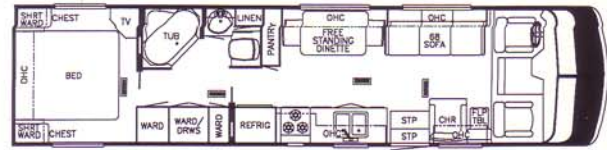
# 1995 • Dutch Star

## Floor Plans

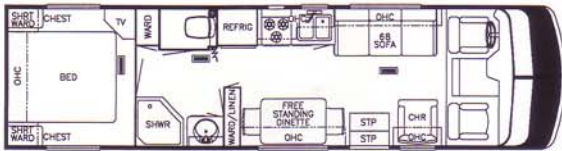
### Class A



DA 2705



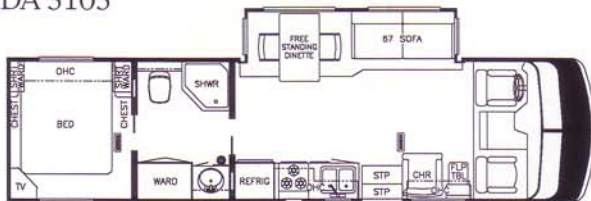
DA 3400



DA 3105



DA 3450

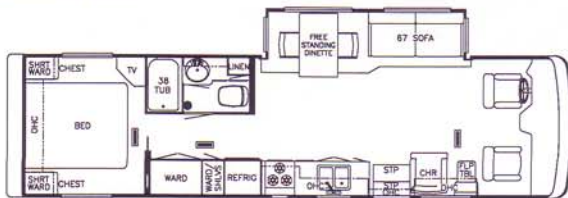


DA 3255



DA 3455

### Diesel Pusher



DP 3450



DP 3455



DP 3655

### 1995 • Dutch Star • Specifications

#### Class A

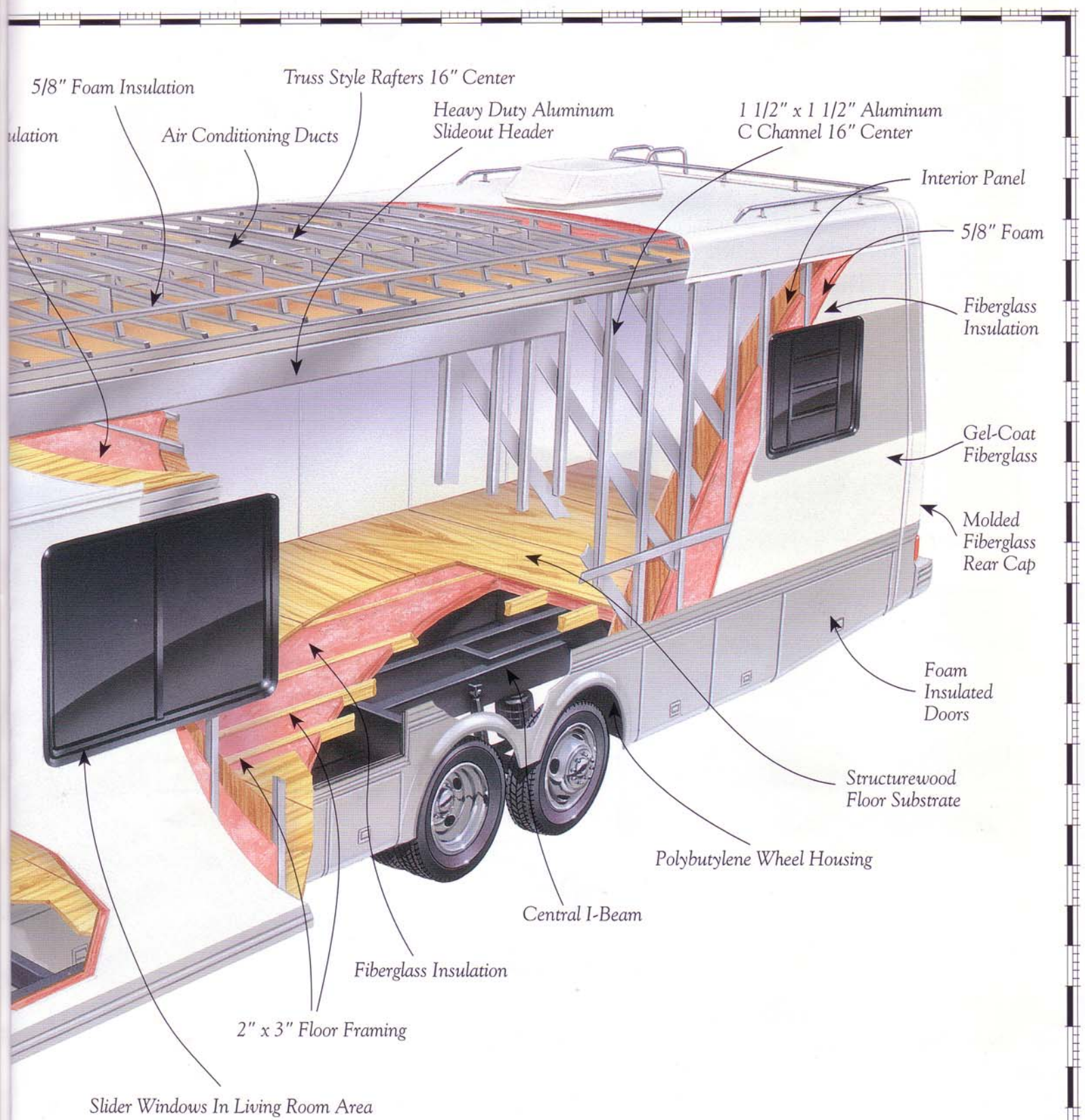
Model	Chassis	Engine	Axle Ratio	Fuel Cap. (Gal.)	Front Gawr	Drive Gawr	Tag Gawr	Gvwr	Gcwr	*Unloaded Vehicle Weight	Wheel Base	Exterior Length	Exterior Width	Exterior Height	Interior Width	Interior Height	Grey Tank	Sewage Tank	Water Tank	Furnace
DA2705	Ford	460	5.13	75	6000	11000	NA	17000	25000	12588	178	27'-8"	96"	11'-5"	90-1/2"	78"	40G	40G	45G	30000
DA3105	Ford	460	5.13	75	6000	11000	NA	17000	25000	13410	220	31'-10"	96"	11'-5"	90-1/2"	78"	40G	40G	45G	30000
DA3255	Ford	460	5.13	75	6000	11000	NA	17000	25000	14600	203	32'-10"	96"	11'-5"	90-1/2"	78"	40G	40G	45G	30000
DA3400	Ford	460	5.13	75	6000	11000	NA	17000	25000	13905	228	34'-7"	96"	11'-5"	90-1/2"	78"	40G	40G	45G	35000
DA3450	Ford	460	5.13	75	6000	11000	NA	17000	25000	14905	216	34'-7"	96"	11'-5"	90-1/2"	78"	40G	40G	45G	35000
DA3455	Ford	460	5.13	75	6000	11000	NA	17000	25000	14905	216	34'-7"	96"	11'-5"	90-1/2"	78"	40G	40G	45G	35000

#### Diesel Pusher

DP3450	Spartan	250	4.63	100	9000	17000	NA	26000	31000	17225	212	34'-8"	101"	11'-8"	95-1/2"	78"	55G	55G	105	35000
DP3455	Spartan	250	4.63	100	9000	17000	NA	26000	31000	17225	212	34'-8"	101"	11'-8"	95-1/2"	78"	55G	55G	105	35000
DP3655	Spartan	250	4.63	100	9000	17000	NA	26000	31000	17755	236	36'-7"	96"	11'-5"	95-1/2"	78"	55G	55G	105	35000

Lengths, Heights, Widths and Dry Weights are approximate before factory options, dealer accessories or personal belongings are added.





Typical Class A





Molded Fiberglass Front Cap

Rubber Roof

Large Radius Corners

9mm Plywood Decking

Fiberglass In

New Grille For '95

Driver's Side Door (See your dealer for availability)

Assist Bar

Double Rubber Seal

Rack & Pinion  
Slideout System



# 1995 • Dutch Star • Diesel Pusher

## Specifications

### Standards

#### Air Conditioning & Heating

Penguin Central Air Conditioner 13.5M  
BTU w/Heat Strip (1)  
In Floor Ducted Heat  
32 Gallon LP Tank  
LP & Carbon Monoxide Leak Detectors

#### Appliances & Accessories

CB Antenna  
Panasonic 22" Microwave  
Range Cover & Hood w/Light & Fan  
Wedgewood 21" High Output 3-Burner  
Range & Oven  
Rear View Monitor System  
Dometic 2807 Refrigerator, 2-Door  
w/Oak Panels  
Stereo AM/FM Cassette w/Clock  
TV Antenna w/Power Booster & 2 Jacks  
Cable TV Ready  
19" (110 Volt) Color TV w/Remote  
VCR Prep  
10 Gallon Gas/Electric Water Heater  
w/D.S.I.

#### Cabinets & Furniture

Queen Bed (60" x 75") w/Lifts for Storage  
Countertop Extension (where available)  
Molded Silverware Divider Tray  
Flexsteel Furniture

#### Chassis Features

250HP Spartan 1C Chassis w/Raised Rails  
1000 Watt Engine Block Heater  
Air Brakes w/Auto Slack Adjuster Front &  
Rear  
Anti-Lock Braking System  
Back-Up Alarm  
Cruise Control  
High Output-Blend Air Dash Heater/Air  
Conditioner  
Recessed Fuel Fill w/Locking Door (on  
each side)  
Tilt & Telescope Steering Wheel  
Chassis Emergency Start Switch  
Stainless Steel Wheel Simulators

#### Electrical Features

Battery Disconnect (coach battery w/1  
switch)  
Thermoil Auxiliary Batteries (2-12 Volt)  
40 AMP Converter w/Charger  
50 AMP Electrical Service w/Flexible  
Cord  
LP Conversion Onan 6.5 KW Generator  
w/Auto Changeover  
Lights in Exterior Compartments

#### Exterior Features

Front & Rear Gel-Coated Fiberglass Caps  
Exterior Sides Gel-Coated Fiberglass  
Hitch w/Wire Connector  
Hydraulic Leveling Jacks w/Joystick  
Controller  
Mud Flaps  
Roof Rack & Ladder  
Rubber Roof  
Slideout w/Free Standing Dinette (see  
floorplans)  
Undercoating

#### Interior Features

Bedspread w/Matching Shams  
Wall Clock & Mirror  
Carpet w/High Density Pad  
Sink Cover  
Smoke Detector & Fire Extinguisher

#### Plumbing/Bath Features

White Bath Accessories  
Monitor Panel  
Tub/Shower Surround w/Enclosure  
Demand Water System  
Winterize Convenience Package (w/water  
heater bypass)

#### Construction Features

Structurewood Floor  
Fiberglass Insulation R7 Sidewalls & Floor,  
Rll Roof  
5/8" Foam Insulation Laminated in  
Sidewalls & Ceiling  
Aluminum Frame Walls & Roof (16" O.C.)  
100" Widebody

#### Windows, Awnings & Vents

Stepwell Tread Liner  
Skylight in Bathroom w/Soft Shade  
Power Bath Vent w/Wallswitch  
Safety Glass Windows

### Options

#### Air Conditioning & Heating

Brisk -Central Air Conditioner 15M BTU w/  
Heat Strip in Place of 13.5M  
Penguin Central Air Conditioner 13.5M  
BTU w/Heat Strip (rear)

#### Appliance & Accessories

CB Radio  
Trumpet Horns  
Panasonic 22" Convection Microwave Oven  
w/3-Burner Plate  
Interior Telephone Jack  
Exterior TV Jack on Door Side

#### Cabinets & Furniture

Built-in Dinette in Place of Free Standing  
Table/Chairs  
Flexsteel High Back Recliner (cloth)  
Two Extra Dinette Chairs  
Pull Out Pantry (where available)  
6-Way Power Driver Seat

#### Electrical Features

75 AMP Converter w/Charger  
7.0 KW Power Tech (diesel) Gen. in Place of  
6.5 KW LP Generator  
Exterior Security Light (each)  
Remote Control Spotlight  
Fluorescent Lighting Recessed in Ceiling  
Docking Lights  
Driving Lights

#### Exterior Features

Remote Control Exterior Mirrors

#### Interior Features

Soft Touch Woven Ceiling  
Hardwood Plank Floor in Kitchen  
Vinyl Floor in Kitchen

#### Plumbing/Bath Features

Sewage Holding Tank Rinse  
Exterior Shower  
Fiberglass Tub/Shower  
Water Filtering System w/Drink Dispenser

#### Windows, Awnings & Vents

A & E 8500 Side Awning  
Side Awning Tension Rafter



# 1995 • Dutch Star • Class A

## Features

### Standards

#### Air Conditioning & Heating

In Floor Ducted Heat  
32 Gallon LP Tank  
LP & Carbon Monoxide Leak Detectors

#### Appliances & Accessories

CB Antenna  
Panasonic 22" Microwave  
Range Hood w/Light & Fan  
Wedgewood 21" High Output 3-Burner Range & Oven  
Dometic 2807 Refrigerator, 2-Door w/Oak Panels  
Stereo AM/FM Cassette  
TV Antenna w/Power Booster & 2 Jacks  
Cable TV Ready  
13" (110 Volt) Color TV w/Remote  
VCR Prep  
6 Gal. Waterheater w/D.S.I.

#### Cabinets & Furniture

Queen Bed w/Lifts for Storage  
Oak Raised Panel Cabinet Doors  
Molded Silverware Divider Tray  
Flexsteel Furniture

#### Chassis Features

Ford Chassis w/Radials/Spare/Cruise/Tilt & Transmission Cooler  
High Output-Blend Air Dash Heat & Air Conditioner  
Chassis Emergency Start Switch  
Stainless Steel Wheel Simulators

#### Electrical Features

Thermoil Auxiliary Batteries (2-12Volt)  
40 AMP Converter w/Charger  
30 AMP Electrical Service  
Lights in Exterior Compartments

#### Exterior Features

Front & Rear Gel-Coated Fiberglass Caps  
Exterior Sides Gel-Coated Fiberglass  
Hitch w/Wire Connector  
Mud Flaps  
Roof Rack & Ladder  
Rubber Roof  
Slideout w/Free Standing Dinette (see floorplans)  
Undercoating

#### Interior Features

Bedsprad w/Matching Shams  
Wall Clock & Mirror  
Carpet w/High Density Pad  
Sink Cover  
Mini Blinds (throughout)  
Smoke Detector & Fire Extinguisher

#### Plumbing/Bath Features

White Bath Accessories  
Monitor Panel  
Tub/Shower Surround w/Enclosure  
Demand Water System  
Winterize Convenience Package (w/water heater bypass)

#### Construction Features

Structurewood Floor  
Fiberglass Insulation R5 Sidewalls, Floor & Roof  
5/8" Foam Insulation Laminated in Sidewalls & Ceiling  
Aluminum Frame Walls & Roof (16" O.C.)

#### Windows, Awings & Vents

Stepwell Tread Liner  
Skylight in Bathroom w/Soft Shade  
Automatic 12 Volt Step  
Power Bath Vent w/Wall Switch  
Dark Tint Safety Glass Windows

### Option Packages

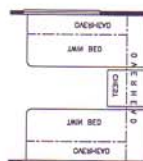
#### E5 Preferred Equipment

Penguin Central Air Conditioner 13.5M BTU w/Heat Strip (1)  
Driver's Door w/Power Window  
Onan 4.0 KW Generator

#### T5 Preferred Equipment

Penguin Central Air Conditioner 13.5M BTU w/Heat Strip (2)  
Driver's Door w/Power Window  
50 AMP Electrical Service w/Flexible Cord  
Onan 6.5 KW Generator

### Optional Floor Plan (where available)



Twin Bed

See Dealer for availability.

### Options

#### Air Conditioning & Heating

Brisk Central Air Conditioner 15M BTU w/Heat Strip in Place of 13.5M

#### Appliances & Accessories

Trumpet Horns  
Panasonic 22" Convection Microwave  
Oven w/3 Burner Plate  
Rear View Monitor System  
Interior Telephone Jack  
Exterior TV Jack on Door Side

#### Cabinets & Furniture

Twin Bed (32" x 75")(where available)  
Built-in Dinette in Place of Free Standing Table/Chairs  
Flexsteel High Back Recliner (cloth)  
Countertop Extension (where available)  
Two Extra Dinette Chairs  
Pull Out Pantry (where available)  
6-Way Power Driver Seat  
Flexsteel Hide-A-Bed Sofa

#### Electrical Features

Battery Disconnect  
Exterior Security Light (each)  
Remote Control Spotlight  
Driving Lights

#### Exterior Features

Remote Control Exterior Mirrors  
Hydraulic Leveling Jacks w/Joystick Controller

#### Interior Features

Plank Floor in Kitchen  
Vinyl Floor in Kitchen

#### Plumbing/Bath Features

Sewage Holding Tank Rinse  
Sewage Hose Holder Tray

#### Construction Features

Insulation Polar Pak (R7 sidewalls & floor, R11 roof)

#### Windows, Awinings & Vents

A & E 8500 Side Awning  
Side Awning Tension Rafter





## 1995 • Dutch Star

A famous movie line says "there's no place like home." And you'll feel right at home in the 1995 Dutch Star Class A or Diesel Pusher. Dutch Stars are equipped with uncompromised structural quality and Newmar's popular slideout room, and you'll feel comfortable with its modest pricing structure.

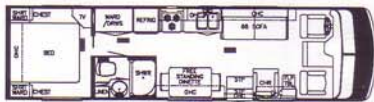


Standard necessities and interior decors can be complemented with a wide range of options, thus the finished appearance of a Dutch Star suggests a much higher-priced motorhome. There is "no place like home," especially when settling into the Dutch Star, because there's no other.

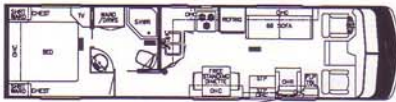


# 1995 • Kountry Star Floor Plans

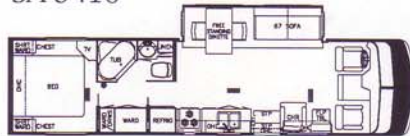
## Class A



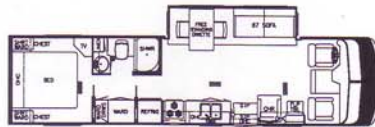
SA 3200



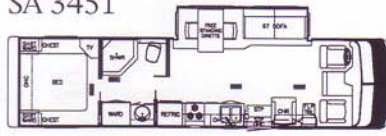
SA 3410



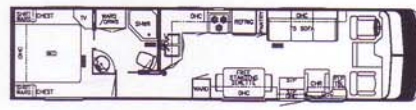
SA 3450



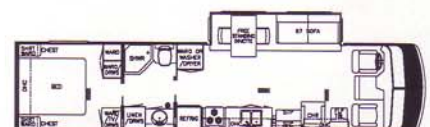
SA 3451



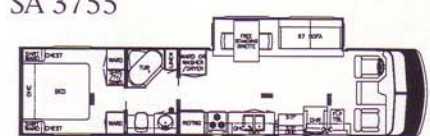
SA 3455



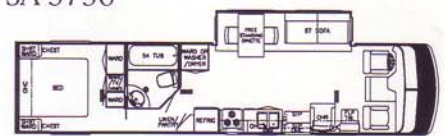
SA 3710



SA 3755

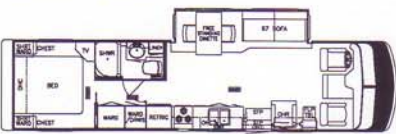


SA 3756

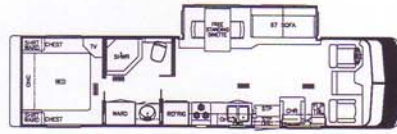


SA 3760

## Diesel Pusher



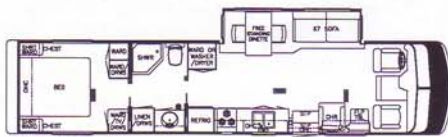
SP 3450



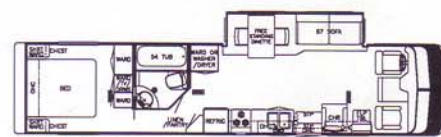
SP 3455



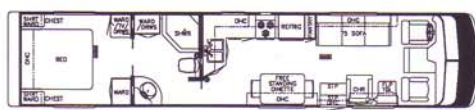
SP 3856



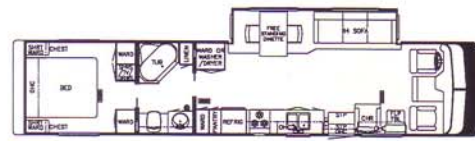
SP 3855



SP 3860



SP 4010



SP 4056

## 1995 • Kountry Star • Class A • Specifications

Fuel										Unloaded		Exterior			Interior		Grey Tank	Sewage Tank	Water Tank	Furnace	
Model	Chassis	Engine	Axle Ratio	Cap. (Gal.)	Front Gaur	Drive Gaur	Tag Gaur	Gvwr	Gcwr	Vehicle Weight	Wheel Base	Length	Width	Height	Width	Height					
SA3200	Ford	460	5.13	75	6000	11000	NA	17000	25000	14905	200	32'-7"	96"	11'-8"	90-1/2"	78"	50G	50G	56G	35000	
SA3410	Ford	460	5.13	75	6000	11000	4000	19500	25000	16295	178	34'-7"	96"	11'-8"	90-1/2"	78"	50G	50G	56G	35000	
SA3450	Ford	460	5.13	75	6000	11000	4000	20000	25000	16895	178	34'-7"	96"	11'-8"	90-1/2"	78"	50G	50G	56G	35000	
SA3451	Ford	460	5.13	75	6000	11000	4000	20000	25000	16895	178	34'-7"	96"	11'-8"	90-1/2"	78"	50G	50G	56G	35000	
SA3455	Ford	460	5.13	75	6000	11000	4000	20000	25000	16695	178	34'-7"	96"	11'-8"	90-1/2"	78"	50G	50G	56G	35000	
SA3710	Ford	460	5.13	75	6000	11000	4000	19500	24000	16895	200	37'-11"	96"	11'-8"	90-1/2"	78"	50G	50G	56G	40000	
SA3755	Ford	460	5.13	75	6000	11000	4000	20000	25000	17555	200	37'-11"	96"	11'-8"	90-1/2"	78"	50G	50G	56G	40000	
SA3756	Ford	460	5.13	75	6000	11000	4000	20000	25000	17555	200	37'-11"	96"	11'-8"	90-1/2"	78"	50G	50G	56G	40000	
SA3760	Ford	454	5.13	75	6000	11000	4000	20000	25000	17270	200	37'-11"	96"	11'-8"	90-1/2"	78"	50G	50G	56G	40000	
Diesel Pusher																					
SP3450	Spartan	250	4.63	100	9000	17000	NA	26000	31000	20035	212	34'-8"	96"	11'-8"	90-1/2"	78"	55G	55G	105	35000	
SP3455	Spartan	250	4.63	100	9000	17000	NA	26000	31000	20075	212	34'-8"	96"	11'-8"	90-1/2"	78"	55G	55G	105	35000	
SP3855	Spartan	250	4.63	100	9000	17000	NA	26000	31000	21620	252	38'-0"	96"	11'-8"	90-1/2"	78"	55G	55G	105	40000	
SP3856	Spartan	250	4.63	100	9000	17000	NA	26000	31000	23990	252	38'-0"	96"	11'-8"	90-1/2"	78"	55G	55G	105	40000	
SP3860	Spartan	250	4.63	100	9000	17000	NA	26000	31000	21160	252	38'-0"	96"	11'-8"	90-1/2"	78"	55G	55G	105	40000	
SP4010	Spartan	250	4.63	100	10400	19000	NA	29400	31000	21725	276	38'-0"	96"	11'-8"	90-1/2"	78"	55G	55G	105	40000	
SP4056	Spartan	250	4.63	100	10400	19000	NA	29400	31000	23990	276	40'-0"	96"	11'-8"	90-1/2"	78"	55G	55G	105	40000	

Lengths, Heights, Widths and Dry Weights are approximate before factory options, dealer accessories or personal belongings are added.



# 1995 • Kountry Star • Diesel Pusher

## Specifications

### Standards

#### Air Conditioning & Heating

Penguin Central Air Conditioner 13.5M BTU w/Heat Strip (1)  
In Floor Ducted Heat  
32 Gallon LP Tank  
LP & Carbon Monoxide Leak Detector

#### Appliances & Accessories

CB Antenna  
Air Horn  
Sharp 30" Convection Microwave Oven w/Power Hood  
Range Cover  
Wedgewood High Output 3-Burner Plate  
Rear View Monitor System  
Dometic 2807 Refrigerator, 2-Door w/Oak Panels  
Stereo AM/FM Cassette w/Clock  
Telephone Hookup w/1 Jack  
TV Antenna w/Power Booster & 2 Jacks  
Cable TV Ready  
19" (110 Volt) Color TV w/Remote  
Exterior Jack on Door Side  
TV Video Switch Box  
VCR  
10 Gallon Gas/Electric Water Heater w/D.S.I.

#### Cabinets & Furniture

Queen Bed (60" x 75") w/Lifts for Storage  
Solid Oak Cabinetry w/Raised Panel Doors  
Countertop Extension (where available)  
Drawers w/Metal Guides & Side Rollers  
Molded Silverware Divider Tray  
Pullout Pantry (where available)  
6-Way Power Driver Seat  
Flexsteel Furniture

#### Chassis Features

250 HP Spartan Mounted Master w/Raised Rails  
1000 Watt Engine Block Heater  
Chassis Emergency Start Switch  
Air Brakes w/Auto Slack Adjuster Front & Rear  
Anti-Lock Braking System  
Back-Up Alarm  
Cruise Control  
High Output-Blend Air Dash Heater/Air Conditioner  
Pack 8 Exhaust Engine Brake  
Recessed Fuel Fill w/Locking Door (on each side)  
Tilt & Telescope Steering Wheel  
Self-Leveling Air Ride Suspension  
Polished Aluminum Wheels

#### Electric Features

Battery Disconnect (coach & chassis batteries)  
Thermoil Auxiliary Batteries  
50 AMP Electrical Service w/Flexible Cord  
7.5 KW Onan (diesel) Gen on Slides w/Auto Changeover  
Fluorescent Recessed Ceiling Lights  
Docking Lights  
Fog Lights  
Lights in Exterior Trunks  
Lights in Wardrobes  
Interior Courtesy Lights

#### Exterior Features

Front & Rear Gel-Coated Fiberglass Caps  
Exterior Sides Gel-Coated Fiberglass  
Hitch w/Wire Connector  
Automatic Hydraulic Leveling Jacks  
Mud Flaps  
Roof Rack & Ladder  
Rubber Roof  
Slideout w/Free Standing Dinette (see floorplans)  
Undercoating

#### Interior Features

Bedspread w/Reversed Shams & Accent Pillow (1)  
Soft Touch Woven Ceiling  
Wall Clock & Mirror  
45 oz., 100% Nylon, Plush Saxony Staintech Carpet w/High Density Pad  
Plank Floor in Kitchen  
Sink Covers  
Smoke Detector & Fire Extinguisher  
Day/Night Pleated Shades & Lamberquins

#### Plumbing/Bath Features

White Bath Accessories  
Monitor Panel  
Sewage Holding Tank Rinse  
Exterior Shower  
China Stool w/Spray Attachment  
Fiberglass Tub/Shower w/Enclosure  
Water Filtering System w/Drink Dispenser  
Auto Rewind Water Hose w/City Water Hook-Up  
Demand Water System  
Winterize Convenience Package (w/water heater bypass)

#### Construction Features

Structurewood Floor  
Fiberglass Insulation R7 Sidewalls & Floor, R11 Roof  
5/8" Foam Insulation Laminated in Sidewalls & Ceiling  
Aluminum Frame Walls & Roof (16" O.C.)

#### Windows, Awnings & Vents

Door Bell  
Driver's Door w/Power Window  
Stepwell Tread Liner  
Exterior Lighted Acrylic Assist Handle (at door)  
Skylight in Bathroom w/Soft Shade  
Automatic 12 Volt Step  
Front Bumper Step  
Fantastic 3-Speed Vent w/Power Opener  
Power Bath Vent w/Wall Switch  
Dark Tinted Safety Glass Windows

### Options

#### Air Conditioning & Heating

Brisk Central Air Conditioner 15M BTU w/Heat Strip in Place of 13.5M  
Penguin Central Air Conditioner 13.5 BTU w/Heat Strip (rear)

#### Appliances & Accessories

CB Radio  
Cellular Telephone Antenna  
Norcold AC/DC Freezer (on slides) in Exterior Storage Compartments  
Icemaker (110 Volt)  
Icemaker Added to Refrigerator  
Security System  
Washer/Dryer Prep (where available)  
Sears Washer/Dryer w/Floor Drain Pan & Pullout Shelf (where available)

#### Cabinets & Furniture

Built-in Dinette in Place of Free Standing Table/Chairs  
Bleached Oak Hardwood Cabinetry  
Flexsteel High Back Recliner (cloth)  
Flexsteel High Back Recliner Leather/Vinyl  
Corian Countertop Bath & Kitchen (with recessed kitchen sink)  
Two Extra Dinette Chairs  
Flexsteel Front Seats, 6-Way Power Leather/Vinyl w/Power Lumbar Support

#### Chassis Features

300 HP Spartan Mountain Master Chassis w/Raised Rails

#### Electrical Features

75 AMP Converter w/Charger  
Heart Freedom 20 Inverter/Converter  
Exterior Security Light (each)  
Remote Control Spotlight

#### Exterior Features

Gel-Coated Fiberglass Roof & Radius Wrap

#### Interior Features

Ceramic Tile Floor in Bath

#### Windows, Awnings & Vents

A & E 9000 Side Awning  
Side Awning Tension Rafter  
A & E 9000 Window Awnings

#### KOUNTRY STAR • LIMITED 2 YEAR EXTENDED WARRANTY COVERAGE



Newmar warrants the recreational vehicle

Superstructure, which includes the following: frame; framing in sidewalls and roof, providing the proper claim procedures are followed.

All other items, excluding the superstructure, are covered under the standard Newmar 1 Year Limited Warranty. See Owner's Manual for details.



# 1995 • Kountry Star • Class A

## Specifications

### Standards

#### Air Conditioning & Heating

In Floor Ducted Heat  
32 Gallon LP Tank  
LP & Carbon Monoxide Leak Detectors

#### Appliances & Accessories

CB Antenna  
Panasonic 22" Microwave  
Range Cover & Hood w/Light & Fan  
Wedgewood 21" High Output 3-Burner Range & Oven  
Dometic 2807 Refrigerator, 2-Door w/Oak Panels  
Stereo AM/FM Cassette w/Clock  
Telephone Hookup w/1 Jack  
TV Antenna w/Power Booster & 2 Jacks  
Cable TV Ready  
19" (110 Volt) Color TV w/Remote  
TV Video Switch Box  
VCR Prep  
10 Gallon Gas/Electric Water Heater w/Direct Spark Ignition

#### Cabinets & Furniture

Queen Bed (60" x 75") w/Lifts for Storage  
Solid Oak Cabinetry w/Raised Panel Doors & Drawer Fronts  
Countertop Extension (where available)  
Drawers w/Metal Guides & Side Rollers  
Molded Silverware Divider Tray  
Flexsteel Furniture

#### Chassis Features

Ford Chassis w/Radials/Spare/Cruise/Tilt & Transmission Cooler  
High Output-Blend Air Dash Heater/Air Conditioner  
Recessed Fuel Fill w/Locking Door  
Chassis Emergency Start Switch  
Granning Air-Ride Tag Axle (34' & 37')  
Stainless Steel Wheel Simulators

#### Electrical Features

Battery Disconnect (coach battery w/1 switch)  
Thermoil Auxiliary Batteries (2-12 Volt)  
50 AMP Converter w/Charger  
30 AMP Electrical Service  
Lights in Wardrobes

#### Exterior Features

Remote Control Exterior Mirrors  
Front & Rear Gel-Coated Fiberglass Caps  
Exterior Sides Gel-Coated Fiberglass  
Hitch w/Wire Connector  
Mud Flaps  
Roof Rack & Ladder  
Rubber Roof  
Slideout w/Free Standing Dinette (see floorplans)  
Undercoating

#### Interior Features

Bedsread w/Reversed Shams & Accent Pillow  
Soft Touch Woven Ceiling  
Wall Clock & Mirror  
45 oz., 100% Nylon, Plush Saxony Staintech  
Carpet w/High Density Pad  
Plank Floor in Kitchen  
Sink Covers  
Smoke Detector & Fire Extinguisher  
Day/Night Pleated Shades & Lamberquins

#### Plumbing/Bath Features

White Bath Accessories  
Monitor Panel  
Tub/Shower Fiberglass w/Enclosure  
Demand Water System  
Winterize Convenience Package (w/water heater bypass)

#### Construction Features

Structurewood Floor  
Fiberglass Insulation R7 Sidewalls & Floor, R11 Roof  
5/8" Foam Insulation Laminated in Sidewalls & Ceiling  
Rear Bumper w/Slideout Tray for Spare Tire  
Aluminum Frame Walls & Roof (16" O.C.)

#### Windows, Awnings & Vents

Driver's Door w/Power Window  
Stepwell Tread Liner  
Skylight in Bathroom w/Soft Shade  
Automatic 12 Volt Step  
Front Bumper Step  
Fantastic 3-Speed Vent w/Power Opener  
Power Bath Vent w/Wall Switch  
Dark Tinted Safety Glass Windows

### Options

#### Air Conditioning & Heating

Brisk Central Air Conditioner 15M BTU w/Heat Strip in Place of 13.5M  
Penguin Central Air Conditioner 13.5 BTU w/Heat Strip (extra)

#### Appliances & Accessories

CB Radio  
Trumpet Horn  
Icemaker (110 Volt)  
Icemaker Added to Refrigerator  
Dometic Double Door 3807.3 AES Refrigerator  
Security System  
Exterior TV Jack on Door Side  
Washer/Dryer Prep (where available)  
Sears Washer/Dryer w/Floor Drain Pan & Pull-Out Shelf (where available)

#### Cabinets & Furniture

Twin Bed (32" x 75") (where available)  
Built-in Dinette in Place of Free Standing Table/Chairs  
Bleached Oak Hardwood Cabinetry  
Cherry Hardwood Cabinetry  
Flexsteel High Back Recliner (cloth)  
Two Extra Dinette Chairs  
Pull-Out Pantry (where available)  
6-Way Power Driver Seat

#### Electrical Features

75 AMP Converter w/Charger  
Exterior Security Light  
Remote Control Spot Light  
Fluorescent Recessed Ceiling Lights  
Docking Lights  
Driving Lights

#### Exterior Features

Roof & Radius Wrap Gel-Coated Fiberglass

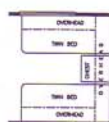
#### Plumbing/Bath Features

110 Volt Heat Pads for Holding Tanks  
Sewage Holding Tank Rinse  
Sewage Hose Holder Tray  
Exterior Shower  
China Stool w/Spray Attachment  
Water Filtering Systems w/Drink Dispenser

#### Windows, Awnings & Vents

A & E 9000 Side Awning  
Side Awning Tension Rafter  
A & E 9000 Window Awnings  
Door Bell

### Optional Floor Plan (where available)



Twin Bed

See Dealer for availability.





## 1995 • Kountry Star

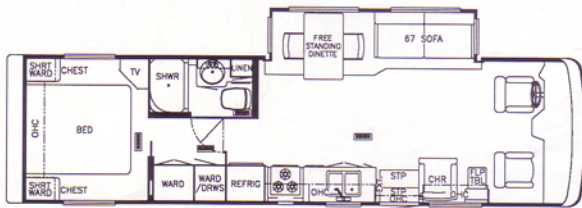
Adventures with the '95 Kountry Star motorhome nearly make you believe the sky's the limit. Whether your preference indicates the Diesel Pusher or the conventional Class A, Kountry Star has the motorhome for your dreams.



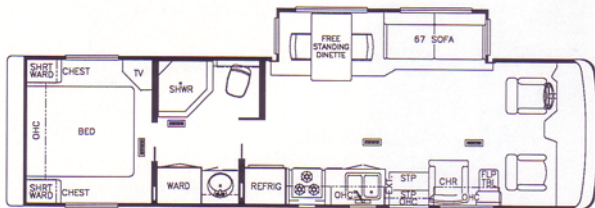
With most of the motorized brands, Newmar's unique slideout and innovative storage space is standard. The mid-range ticket price of the Kountry Star offers affordability without compromising structural quality and design brilliance.



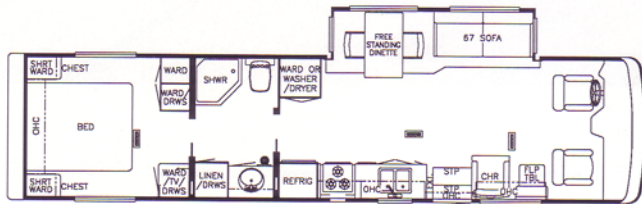
# 1995 • Mountain Aire Floor Plans



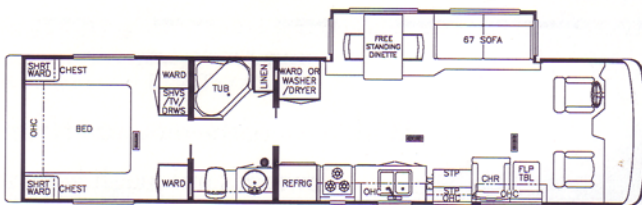
MP 3450



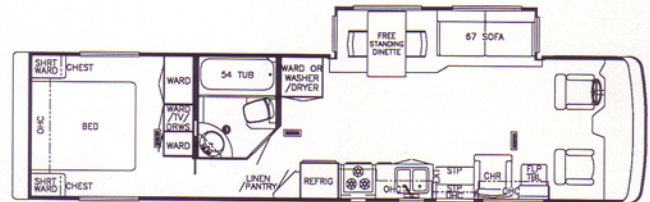
MP 3455



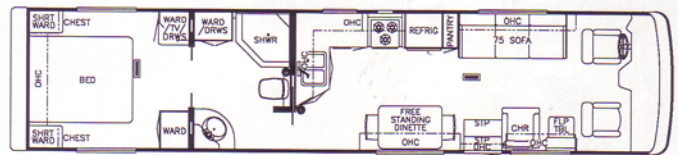
MP 3855



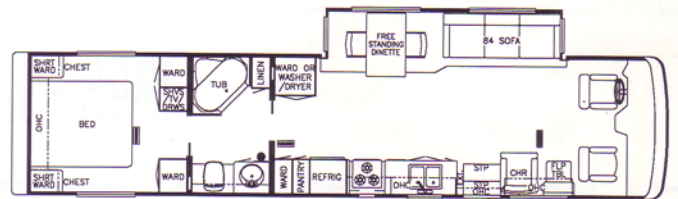
MP 3856



MP 3860



MP 4010



MP 3455

## 1995 Mountain Aire • Diesel Pusher • Specifications

Model	Chassis	Engine	Fuel		*Unloaded																
			Axle	Cap.	Front	Drive	Tag	Gvwr	Gcwr	Vehicle	Wheel	Exterior			Interior		Grey	Sewage	Water	Furnace	
			Ratio	(Gal.)								Gawr	Gawr	Gawr	Weight	Base					Length
MP3450	Spartan	250	4.63	100	9000	17000	NA	26000	31000	20035	212	34'-8"	101"	11'-8"	95-1/2"	78"	45G	45G	65G	35000	
MP3455	Spartan	250	4.63	100	9000	17000	NA	26000	31000	20075	252	34'-8"	101"	11'-8"	95-1/2"	78"	45G	45G	65G	35000	
MP3855	Spartan	250	4.63	100	9000	17000	NA	26000	31000	21620	252	38'-0"	101"	11'-8"	95-1/2"	78"	55G	55G	105	40000	
MP3856	Spartan	250	4.63	100	9000	17000	NA	26000	31000	23990	252	38'-0"	101"	11'-8"	95-1/2"	78"	55G	55G	105	40000	
MP3860	Spartan	250	4.63	100	9000	17000	NA	26000	31000	21160	252	38'-0"	101"	11'-8"	95-1/2"	78"	55G	55G	105	40000	
MP4010	Spartan	250	4.63	100	10400	19000	NA	29400	31000	21725	276	38'-0"	101"	11'-8"	95-1/2"	78"	55G	55G	105	40000	
MP4056	Spartan	250	4.63	100	10400	19000	NA	29400	31000	23990	276	40'-0"	101"	11'-8"	95-1/2"	78"	55G	55G	105	40000	
MP4060	Spartan	250	4.63	100	10400	19000	NA	29400	31000	21725	276	40'-0"	101"	11'-8"	95-1/2"	78"	55G	55G	105	40000	

Lengths, Heights, Widths and Dry Weights are approximate before factory options, dealer accessories or personal belongings are added.



# 1995 • Mountain Aire • Diesel Pusher

## Specifications

### Standards

#### Air Conditioner & Heating

Penguin Central Air Conditioner  
13.5M BTU w/Heat Strip (1)  
Floor Ducted Heat  
32 Gallon LP Tank  
LP & Carbon Monoxide Leak  
Detectors

#### Appliances & Accessories

CB Antenna  
Air Horn  
Sharp 30" Convection Microwave Oven  
Matching Countertop Range Cover  
Recessed Wedgewood High Output  
3-Burner Plate  
Rear View Monitor System  
Dometic 2807 Refrigerator, 2-Door  
w/Black Glass  
Stereo AM/FM Cassette w/Clock  
Telephone Hookup w/1 Jack  
TV Antenna w/Power Booster & 2 Jacks  
Cable TV Ready  
19" (110 Volt) Color TV w/Remote  
Exterior TV Jack on Door Side  
TV Video Switch Box  
VCR  
10 Gallon Gas/Electric Water Heater  
w/D.S.I.

#### Cabinets & Furniture

Queen Bed (60" x 75") w/Lifts for  
Storage  
Solid Oak Cabinetry w/Raised Panel  
Cathedral Doors  
Countertop Extension (where  
available)  
Drawers w/Metal Guides & Side  
Rollers  
Molded Silverware Divider Tray  
Pullout Pantry (where available)  
6-Way Power Driver Seat  
Flexsteel Furniture

#### Chassis Features

250 HP Spartan Mountain Master  
w/Raised Rails  
Chassis Emergency Start Switch  
Air Brakes w/Auto Slack Adjuster  
Front & Rear  
Anti-Lock Braking System  
Back-Up Alarm  
Cruise Control  
High Output-Blend Air Dash Heater/  
Air Conditioner  
Pack 8 Exhaust Engine Brake  
Recessed Fuel Fill w/Locking Door  
(on each side)  
Tilt & Telescope Steering Wheel  
Self-Leveling Air Ride Suspension  
Polished Aluminum Wheels

#### Electrical Features

Battery Disconnect (coach & chassis batteries)  
Thermoil Auxiliary Batteries (3-12 Volt)  
50 AMP Electrical Service w/Flexible Cord  
7.0 KW Power Tech (diesel) Gen on Slides  
Fluorescent Recessed Ceiling Lights  
Docking Lights  
Driving Lights  
Lights in Exterior Compartments  
Lights in Wardrobes  
Interior Courtesy Lights

#### Exterior Features

Remote Control Mirrors Defrost & Turn Signals  
Front & Rear Gel-Coated Fiberglass Caps  
Exterior Sides Gel-Coated Fiberglass  
Hitch w/Wire Connector  
Automatic Hydraulic Leveling Jacks  
Mud Flaps  
Roof Rack & Ladder  
Slideout w/Free Standing Dinette (see floorplans)  
Undercoating

#### Interior Features

Bedsread w/Reversed Shams & Accent Pillow (1)  
Soft Touch Woven Ceiling  
Wall Clock & Mirror  
45 oz. 100% Nylon, Plush Saxony Staintech Carpet  
w/High Density Pad  
Plank Floor in Kitchen  
Sink Covers  
Smoke Detector & Fire Extinguisher  
Day/Night Pleated Shades & Lamberquins

#### Plumbing/Bath Features

White Bath Accessories  
Monitor Panel  
Sewage Holding Tank Rinse  
China Stool w/Spray Attachment  
Fiberglass Tub/Shower w/Enclosure  
Water Filtering System w/Drink Dispenser  
Auto Rewind Water Hose w/City Water Hook-Up  
Demand Water System  
Winterize Convenience Package  
(w/water heater bypass)

#### Construction Features

Structurewood Floor  
Fiberglass Insulation R7 Sidewalls & Floor, R11 Roof  
5/8" Foam Insulation Laminated in Sidewalls & Ceiling  
Aluminum Frame Walls & Roof (16" O.C.)  
100" Widebody

#### Windows, Awnings & Vents

Door Bell  
Stepwell Tread Liner  
Lighted Acrylic Assist Handle  
Skylight in Bathroom w/Soft Shade  
Automatic 12 Volt Step  
Fantastic 3-Speed Vent w/Power Opener  
Power Bath Vent w/Wall Switch  
Dark Tinted Safety Glass Windows

### Options

#### Air Conditioning & Heating

Brisk Central Air Conditioner 15M BTU  
w/Heat Strip in Place of 13.5M  
Penguin Central Air Conditioner 13.5 BTU  
w/Heat Strip (extra)

#### Appliances & Accessories

CB Radio  
Cellular Telephone Antenna  
Norcold AC/DC Freezer (on-slides) in  
Exterior Compartment  
Icemaker (110 Volt)  
Dometic Double Door 3807.3 AES Refrigerator  
Security System  
Washer/Dryer Prep (where available)  
Sears Washer/Dryer w/Floor Drain Pan &  
Pullout Shelf (where available)

#### Cabinets & Furniture

Built-in Dinette in Place of Free Standing  
Table/Chairs  
Bleached Oak Hardwood Cabinetry  
Flexsteel High Back Recliner (cloth)  
Flexsteel High Back Recliner (leather/vinyl)  
Corian Countertop Bath & Kitchen  
(w/recessed kitchen sink)  
Two Extra Dinette Chairs  
Flexsteel Front Seats 6-Way Power  
Leather/Vinyl w/Power Lumbar Support

#### Chassis Feature

300 HP Spartan Mountain Master Chassis  
w/Raised Rails

#### Electrical Features

75 AMP Converter w/Charger  
Heart Freedom 20 Inverter/Converter  
Exterior Security Light (each)  
Remote Control Spotlight

#### Exterior Feature

Gel-Coated Fiberglass Roof & Radius Wrap

#### Interior Feature

Ceramic Tile Floor in Bath

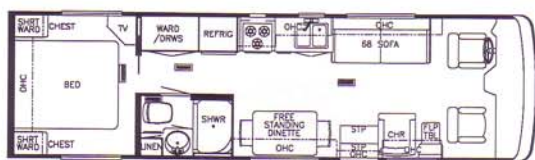
#### Awnings

A & E 9000 Side Awning  
Side Awning Tension Rafter  
A & E 9000 Window Awnings

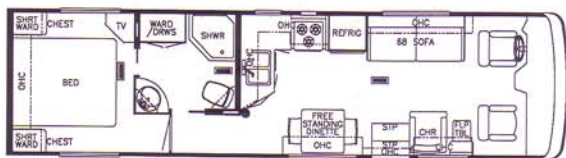


# 1995 • Mountain Aire • Class A

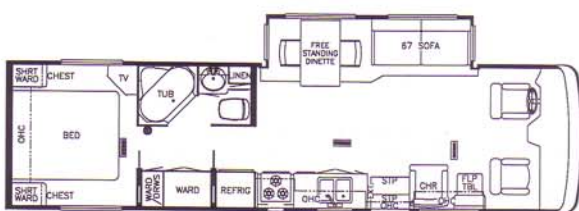
## Floor Plans



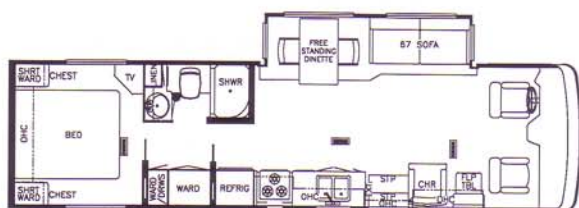
MA 3200



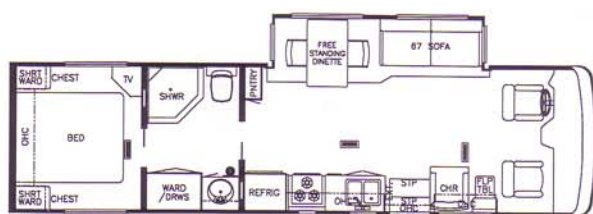
MA 3410



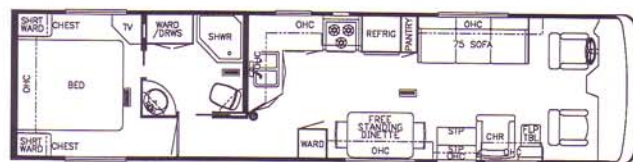
MA 3450



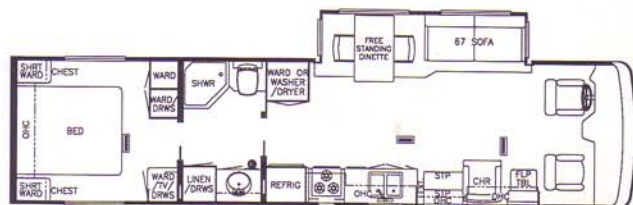
MA 3451



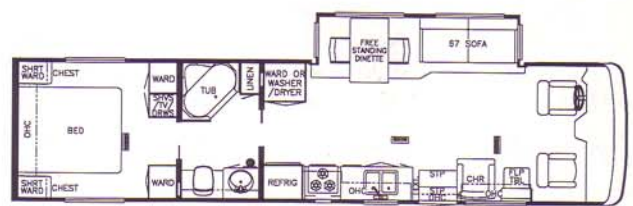
MA 3455



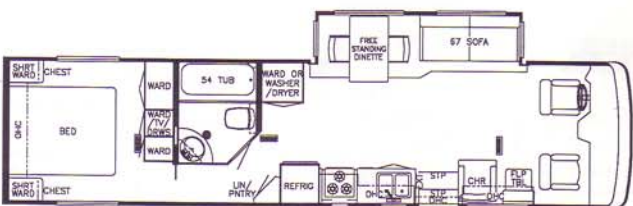
MA 3710



MA 3755



MA 3756



MA 3760

## 1995 • Mountain Aire • Class A • Specifications

Model	Chassis	Engine	Fuel				*Unloaded					Exterior			Interior		Grey Tank	Sewage Tank	Water Tank	Furnace
			Axle Ratio	Cap. (Gal.)	Front Gaur	Drive Gaur	Tag Gaur	Gvwr	Gcwr	Vehicle Weight	Wheel Base	Length	Width	Height	Width	Height				
MA3200	Ford	460	5.13	75	6000	11000	NA	17000	25000	14905	200	32'- 7"	101"	11'-8"	95-1/2"	78"	50G	50G	56G	35000
MA3410	Ford	460	5.13	75	6000	11000	4000	19500	25000	16295	178	34'- 7"	101"	11'-8"	95-1/2"	78"	50G	50G	56G	35000
MA3450	Ford	460	5.13	75	6000	11000	4000	20000	25000	16895	178	34'- 7"	101"	11'-8"	95-1/2"	78"	50G	50G	56G	35000
MA3451	Ford	460	5.13	75	6000	11000	4000	20000	25000	16895	178	34'- 7"	101"	11'-8"	95-1/2"	78"	50G	50G	56G	35000
MA3455	Ford	460	5.13	75	6000	11000	4000	20000	25000	16695	178	34'- 7"	101"	11'-8"	95-1/2"	78"	50G	50G	56G	35000
MA3710	Ford	460	5.13	75	6000	11000	4000	19500	25000	16895	200	37'-11"	101"	11'-8"	95-1/2"	78"	50G	50G	56G	40000
MA3755	Ford	460	5.13	75	6000	11000	4000	20000	25000	17555	200	37'-11"	101"	11'-8"	95-1/2"	78"	50G	50G	56G	40000
MA3756	Ford	460	5.13	75	6000	11000	4000	20000	25000	17555	200	37'-11"	101"	11'-8"	95-1/2"	78"	50G	50G	56G	40000
MA3760	Ford	460	5.13	75	6000	11000	4000	20000	25000	17270	200	37'-11"	101"	11'-8"	95-1/2"	78"	50G	50G	56G	40000

Lengths, Heights, Widths and Dry Weights are approximate before factory options, dealer accessories or personal belongings are added.



# 1995 • Mountain Aire • Class A

## Specifications

### Standards

#### Air Conditioning & Heating

Penguin Central Air Conditioner 13.5M  
BTU w/Heat Strip (1)  
In Floor Ducted Heat  
32 Gallon LP Tank  
LP & Carbon Monoxide Leak Detector

#### Appliances & Accessories

CB Antenna  
Panasonic 22" Microwave  
Matching Countertop Range Cover  
Range Hood w/Light & Fan  
Recessed Wedgewood 21" High Output 3-  
Burner Range & Oven  
Dometic Double Door 2807 Refrigerator,  
2-Door w/Black glass  
Stereo AM/FM Cassette w/Clock  
Telephone Hookup w/1 Jack  
TV Antenna w/Power Booster & 2 Jacks  
Cable TV Ready  
19" (110 Volt) Color TV w/Remote  
TV Video Switch Box  
VCR Prep  
10 Gallon Gas/Electric Water Heater w/D.S.I.

#### Cabinets & Furniture

Queen Bed (60" x 75") w/Lifts for Storage  
Solid Oak Cabinetry w/Raised Panel  
Cathedral Doors  
Countertop Extension (where available)  
Drawers w/Metal Guides & Side Rollers  
Molded Silverware Divider Tray  
Flexsteel Furniture

#### Chassis Features

Ford Chassis w/Radials/Spare/Cruise/Tilt &  
Transmission Cooler  
High Output-Blend Air Dash Heater/Air  
Conditioner  
Recessed Fuel Fill w/Locking Door  
Chassis Emergency Start Switch  
Granning Air Ride Tag Axle (34' & 37')  
Stainless Steel Wheel Simulators

#### Electrical Features

Battery Disconnect (coach battery w/1 switch)  
Thermoil Auxiliary Batteries (2-12 Volt)  
50 AMP Converter w/Charger  
30 AMP Electrical Service  
Onan 4.0 kw Gen w/Remote Switch &  
Auto Changeover  
Driving Lights  
Lights in Exterior Compartments  
Lights in Wardrobes  
Interior Courtesy Lights

#### Exterior Features

Remote Control Exterior Mirrors  
Front & Rear Gel-Coated Fiberglass Caps  
Exterior Sides Gel-Coated Fiberglass  
Hitch w/Wire Connector  
Mud Flaps  
Roof Rack & Ladder  
Rubber Roof  
Slideout w/Free Standing Dinette (see floor plans)  
Undercoating

#### Interior Features

Bedsread w/Reversed Shams & Accent Pillow  
Soft Touch Woven Ceiling  
Wall Clock & Mirror  
45 oz., 100% Nylon Plush Saxony Staintech  
Carpet w/High Density Pad  
Sink Covers  
Smoke Detector & Fire Extinguisher  
Day/Night Pleated Shades & Lamberquins  
Plank Floor in Kitchen

#### Plumbing/Bath Features

White Bath Accessories  
Monitor Panel  
Sewage Holding Tank Rinse  
Sewage Hose Holder  
China Stool w/Spray Attachment  
Fiberglass Tub/Shower w/Enclosure  
Demand Water System

#### Construction Features

Structurewood Floor  
Fiberglass Insulation R7 Sidewalls & Floor, R11 Roof  
Rear Bumper w/Slideout Tray for Spare Tire  
100" Widebody  
Aluminum Frame Walls & Roof (16" O.C.)

#### Windows, Awnings & Vents

Door Bell  
Stepwell Tread Liner  
Skylight in Bathroom w/Soft Shade  
Automatic 12 Volt Step  
Fantastic 3-Speed Vent w/Power Opener  
Power Bath Vent w/Wall Switch  
Dark Tinted Safety Glass Windows

### Optional Floor Plan (where available)



Twin Bed

See Dealer for availability.

### Option Packages

#### F5 Preferred Equipment

Onan Generator 6.5 KW in Place of Standard  
w/Remote Switch & Auto Changeover  
Rear View Monitor System  
50 AMP Electrical Service w/Flexible Cord  
Hydraulic Leveling Jacks w/Joystick Controller

### Options

#### Air Conditioning & Heating

Brisk Central Air Conditioner 15M BTU  
w/Heat Strip in Place of 13.5M  
Penguin Central Air Conditioner 13.5 BTU  
w/Heat Strip (extra)

#### Appliances & Accessories

CB Radio  
Trumpet Horn  
Icemaker (110 Volt)  
Icemaker Added to Refrigerator  
Sharp 30" Convection Microwave Oven  
w/3-Burner Plate  
Dometic Double Door 3807.3 AES Refrigerator  
Security System  
Exterior TV Jack on Door Side  
Washer/Dryer Prep (where available)  
Sears Washer/Dryer w/Floor Drain Pan &  
Pullout Shelf (where available)

#### Cabinets & Furniture

Twin Bed (32" x 75")(where available)  
Built-in Dinette in Place of Free  
Standing Table/Chairs  
Bleached Oak Hardwood Cabinetry  
Flexsteel High Back Recliner (cloth)  
Flexsteel High Back Recliner Leather/Vinyl  
Two Extra Dinette Chairs  
6-Way Power Flexsteel Leather/Vinyl Front  
Seats w/Power Lumbar Support  
Pullout Pantry (where available)  
6-Way Power Driver Seat

#### Electrical Features

Exterior Security Light (each)  
Remote Control Spotlight  
Fluorescent Recessed Ceiling Lights  
Docking Lights

#### Exterior Features

Gel-Coated Fiberglass Roof & Radius Wrap

#### Plumbing/Bath Features

110 Volt Heat Pads for Holding Tanks  
Exterior Shower  
Water Filtering System w/Drink Dispenser

#### Awnings

A & E 9000 Side Awning  
Side Awning Tension Rafter  
A & E 9000 Window Awnings



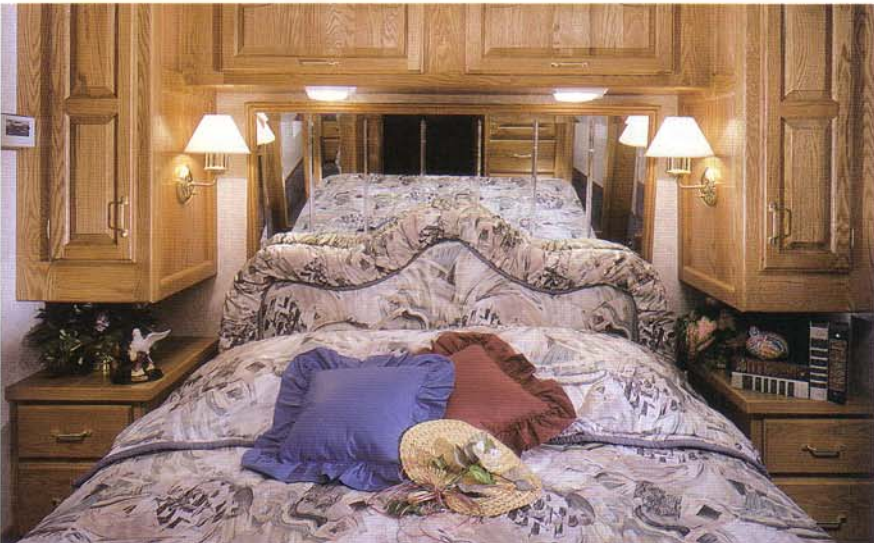
The 1995 Mountain Aire profile has been updated with distinctively designed graphics and a specially-designed front end that conveniently extends the driver's view of the road.



Grand design elements also include swivel seating in the front, as well as a stationary, molded beverage tray and built-in television. (Optional leather driver and passenger seats are shown.)



## Experience the Mountain Aire.



Comfort and luxury are qualities you'll enjoy in the popular designs for the Mountain Aire bedrooms.



Optional residential recliner.





## 1995 • Mountain Aire • Class A

Looking at the 1995 Mountain Aire, you see a distinctive profile in a motorhome, yet you also find an attractive, affordable price. These motorhomes have the beauty, quality and reliability that all Newmar products are known for and they have developed a reputation all their own.

The innovative Newmar motorhome slideouts are very popular. In the Mountain Aire's grand interior, the large slideout

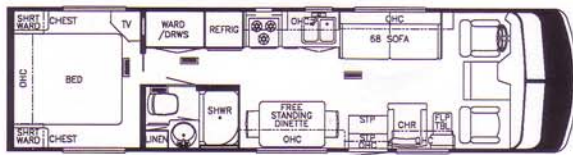
makes the living area, kitchen and dining areas as open and comfortable as your home, offering name brand appliances and stately cabinetry. Newmar pioneered the slideout and remains unchallenged as the innovative leader in the industry.



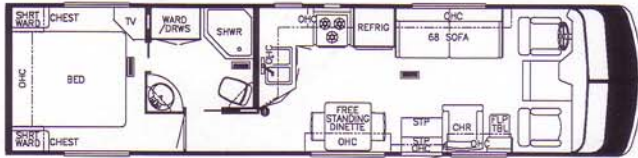
Splendid design specifications and uncompromised structural quality combine with Newmar's Old World Craftsmanship and New World Technology for a mid-range priced, luxury class, vehicle.



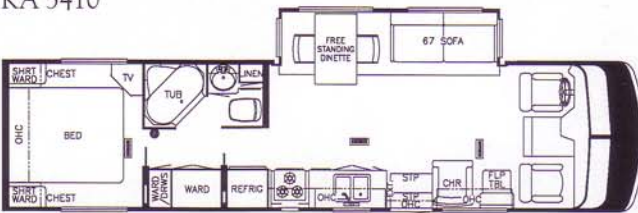
# 1995 • Kountry Aire Floor Plans



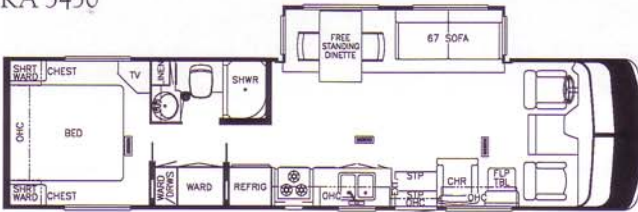
KA 3200



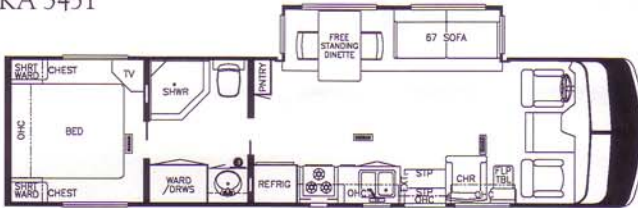
KA 3410



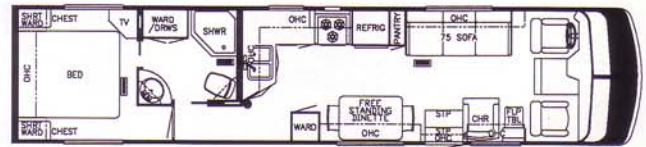
KA 3450



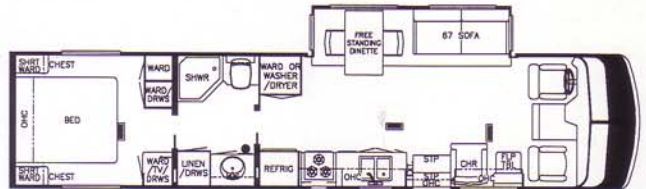
KA 3451



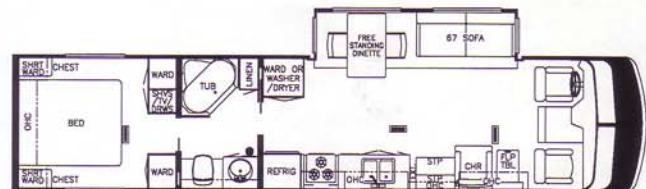
KA 3455



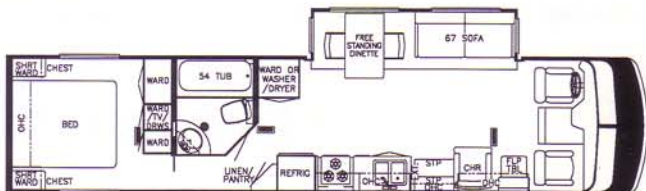
KA 3710



KA 3755



KA 3756



KA 3760

## 1995 • Kountry Aire • Class A • Specifications

Model	Chassis	Engine	Fuel				Unloaded				Exterior			Interior		Grey Tank	Sewage Tank	Water Tank	Furnace	
			Axle Ratio	Cap. (Gal.)	Front Gaur	Drive Gaur	Tag Gaur	Gvwr	Gcwr	Vehicle Weight	Wheel Base	Length	Width	Height	Width					Height
KA3200	Ford	460	5.13	75	6000	11000	NA	17000	25000	13905	200	32'- 7"	96"	11'-8"	90-1/2"	78"	50G	50G	56G	35000
KA3410	Ford	460	5.13	75	6000	11000	4000	19500	25000	16295	178	34'- 7"	96"	11'-8"	90-1/2"	78"	50G	50G	56G	35000
KA3450	Ford	460	5.13	75	6000	11000	4000	20000	25000	16895	178	34'- 7"	96"	11'-8"	90-1/2"	78"	50G	50G	56G	35000
KA3451	Ford	460	5.13	75	6000	11000	4000	20000	25000	16895	178	34'- 7"	96"	11'-8"	90-1/2"	78"	50G	50G	56G	35000
KA3455	Ford	460	5.13	75	6000	11000	4000	20000	25000	16695	178	34'- 7"	96"	11'-8"	90-1/2"	78"	50G	50G	56G	35000
KA3710	Ford	460	5.13	75	6000	11000	4000	19500	25000	16895	200	37'-11"	96"	11'-8"	90-1/2"	78"	50G	50G	56G	40000
KA3755	Ford	460	5.13	75	6000	11000	4000	20000	25000	17555	200	37'-11"	96"	11'-8"	90-1/2"	78"	50G	50G	56G	40000
KA3756	Ford	460	5.13	75	6000	11000	4000	20000	25000	16695	200	37'-11"	96"	11'-8"	90-1/2"	78"	50G	50G	56G	40000
KA3760	Ford	460	5.13	75	6000	11000	4000	20000	25000	17270	200	37'-11"	96"	11'-8"	90-1/2"	78"	50G	50G	56G	40000

Lengths, Heights, Widths and Dry Weights are approximate before factory options, dealer accessories or personal belongings are added.



# 1995 • Kountry Aire • Class A

## Specifications

### Standard Features

#### Air Conditioning & Heating

Penguin Central Air Conditioner 13.5M BTU w/Heat Strip (1)  
In Floor Ducted Heat  
32 Gallons LP Tank  
LP & Carbon Monoxide Leak Detectors

#### Appliances & Accessories

CB Antenna  
Trumpet Horn  
Sharp 30" Convection Microwave Oven  
Matching Countertop Range Cover  
Recessed Wedgewood High Output 3-Burner Plate  
Rear View Monitor System  
Dometic 2807 Refrigerator, 2 Door w/Oak Panels  
Stereo AM/FM Cassette w/Clock  
Telephone Hookup w/1 Jack  
TV Antenna w/Power Booster & 2 Jacks  
Cable TV Ready  
19" (110 Volt) Color TV w/Remote  
Exterior TV Jack on Door Side  
TV Video Switch Box  
VCR Prep  
10 Gallon Gas/Electric Water Heater w/D.S.I.

#### Cabinets & Furniture

Queen Bed (60" x 75") w/Pillow Top  
Mattress & Lifts for Storage  
Solid Oak Cabinetry w/Raised Panel Cathedral Doors  
Countertop Extension (where available)  
Drawers w/Metal Guides & Side Rollers  
Molded Silverware Divider Tray  
Pullout Pantry (where available)  
6-Way Power Driver's Seat  
Flexsteel Furniture

#### Chassis Features

Ford Chassis w/Radial Tires/Spare/Cruise/Tilt & Transmission Cover  
Chassis Emergency Start Switch  
High Output-Blend Air Dash Heater/Air Conditioner  
Dash Instruments w/Tachometer & Vacuum Gauge  
Recessed Fuel Fill w/Locking Door  
Granning Air Ride Tag Axle 34 & 37  
Stainless Steel Wheel Simulators

#### Electrical Features

Battery Disconnect (coach battery w/1 Switch)  
Thermol (2-12 Volt) Auxiliary Batteries  
50 AMP Converter w/Charger  
50 AMP Electrical Service w/Flexible Cord  
6.5 KW Onan Gen w/Remote Switch  
Remote Control Spotlight  
Fluorescent Lighting Recessed in Ceiling  
Docking Lights  
Driving Lights  
Lights in Exterior Storage Compartments  
Lights in Wardrobes w/Automatic Switches  
Interior Courtesy Lights  
Midship Side Turn Signals

#### Exterior Features

Remote Control Mirrors w/Defrost & Turn Signals  
Front & Rear Gel-Coated Fiberglass Caps  
Jacks Hydraulic Leveling w/Joystick  
Exterior Sides Gel-Coated Fiberglass  
Hitch w/Wire Connector  
Mud Flaps  
Roof Rack & Ladder  
Rubber Roof  
Slideout w/Free Standing Dinette (see floor plans)  
Undercoating

#### Interior Features

Bedsread w/Reversed Shams & Accent Pillow (2)  
Soft Touch Woven Ceiling  
Wall Clock & Mirror  
45 oz. 100% Nylon Plush Saxony Staintech Carpet w/High Density Pad  
Plank Floor in Kitchen  
Floor Mats at Front Seats  
Sink Covers  
Smoke Detector & Fire Extinguisher  
Waste Basket & Convenience Light in Kitchen  
Day/Night Pleated Shades, Lamberquins

#### Plumbing/Bath Features

Brass Bath Accessories  
Moen Faucet for Kitchen Sink-Single Handle-High Rise  
Moen Faucet for Shower & Lavatory-Single Handle Monitor Panel  
Sewage Holding Tank Rinse  
Sewage Hose Holder  
China Stool w/Spray Attachment  
Fiberglass Tub/Shower w/Enclosure  
Water Filtering System w/Drink Dispenser  
Demand Water System  
Winterize Convenience Package (w/water heater bypass)

#### Construction Features

Structurewood Floor  
Fiberglass R7 Sidewalls & Floor, R19 Roof  
5/8" Foam Insulation Laminated in Sidewalls & Ceiling  
Rear Bumper w/Slideout Tray for Spare Tire  
Aluminum Frame Walls & Roof (16" O.C.)

#### Windows, Awnings & Vents

Door Bell  
Driver's Door w/Power Window  
Stepwell Tread Liner  
Lighted Acrylic Assist Handle  
Skylight in Bathroom w/Soft Shade  
Automatic 12 Volt Step  
Front Bumper Step  
Fantastic 3-Speed Vent w/Power Opener  
Power Bath Vent w/Wall Switch  
Safety Glass Windows

### Options

#### Air Conditioning & Heating

Brisk Central Air Conditioner 15M BTU w/Heat Strip in Place of 13.5M  
Penguin Central Air Conditioner 13.5 BTU w/Heat Strip (extra)

#### Appliances & Accessories

CB Radio  
Icemaker (110 Volt)  
Icemaker Added to Refrigerator  
Dometic Double Door 3807.3 AES Refrigerator  
Security System  
Washer/Dryer Prep (where available)  
Sears Washer/Dryer w/Floor Drain Pan & Pull-Out Shelf (where available)

#### Cabinets & Furniture

Twin Bed (32" x 75") (where available)  
Built-in Dinette in Place of Free Standing Table/Chairs  
Bleached Oak Hardwood Cabinetry  
Cherry Hardwood Cabinetry w/Raised Panel Cathedral Doors  
Flexsteel High Back Recliner (cloth)  
Flexsteel High Back Recliner Leather/Vinyl  
Two Extra Dinette Chairs  
Flexsteel Leather/Vinyl 6-Way Power Front Seats w/Power Lumbar Support

#### Electrical Features

75 AMP Converter w/Charger  
Exterior Security Light (each)

#### Plumbing/Bath Features

Exterior Shower

#### Windows, Awnings & Vents

A & E 9000 Side Awning  
Side Awning Tension Rafter  
A & E 9000 Window Awnings

### Optional Floor Plan

(where available)



Twin Bed

See Dealer for availability.

Kountry Aire, Mountain Aire • 5 Year Limited Warranty on Superstructure



Newmar Corporation warrants the Superstructure which includes the following: the I-beam frame; the aluminum framing in the sidewalls and roof. If any part of the Superstructure fails to perform properly within 5 years from the date of purchase because of faulty workmanship or materials supplied by Newmar, during the ownership of the original buyer, it will be repaired without charge for either parts or labor by Newmar providing the proper claim procedures are followed. All other items excluding the Superstructure are covered under the standard Newmar 1 Year Limited Warranty. See Owner's Manual for details.



*Newmar was the innovator of the motorhome slideout, and continues as a leader, providing mechanisms that function smoother and quieter than any in the industry.*



*Optional hidden leaf table.*



## Enjoy the Kountry Aire.



*Elegance is featured in this sophisticated Kountry Aire bedroom, with customized bed coverings and a richly upholstered headboard.*



*Whipping up a meal is a breeze in this well-designed layout of the Kountry Aire kitchen, complemented with attractive hardwood floors and cabinetry.*





## 1995 • Kountry Aire • Class A

Take it all in...the 1995 Kountry Aire is like a breath of fresh air in contrast to comparably priced motor-homes on the market today. The mainstay of Newmar Corporation, conventional Kountry Aire Class A's, are top flight, with a combination of Old World Craftsmanship and New World Technology. Innovative, exclusive slideouts provide



a whole new dimension in space and comfort with the push of a button. It's no wonder Kountry Aire is the one choice of return customers, especially when you consider the quality of built-in features. Richly furnished interiors, hand-selected hardwoods and stylish details make your motorhome a standout. Try the Kountry Aire for yourself and experience the difference.