

# 1996 Mountain Aire • Kountry Aire

Fifth Wheels by Newmar



1996 Mountain Aire®



1996 Kountry Aire®

*... a breath of fresh Aire.*



# Mountain Aire • Kountry Aire

Fifth Wheels by Newmar



1996 Mountain Aire®



1996 Kountry Aire®

Share in the benefits of joining the Newmar Kountry Klub, a "family" with a network of chapters throughout the United States and Canada.

All you need for eligibility is to be the proud owner of any one of the fine Newmar motorhomes or towables.

**[Newmar Kountry Klub]**



An American Tradition of Excellence.



36SADS



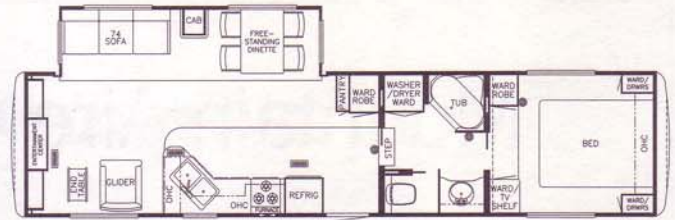
36SKDS



39RKSA



39RKWB



39RLDK



39WRKD



40CKDA



40CKDB



Prices, specifications and floor plans are subject to change at Newmar's discretion without prior written notice or obligation. Some floor plans may show optional features.

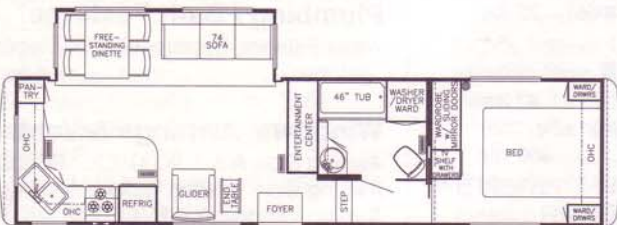


# Kountry Aire® • Mountain Aire® 5th Wheel

## 1996 Floor Plans



33WRKD



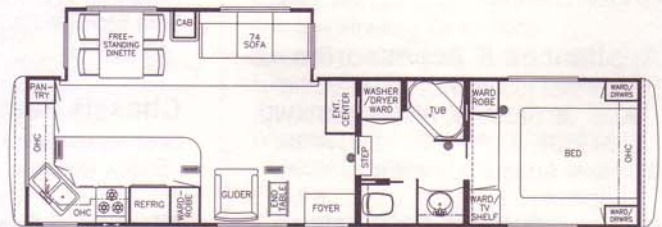
34RKSA



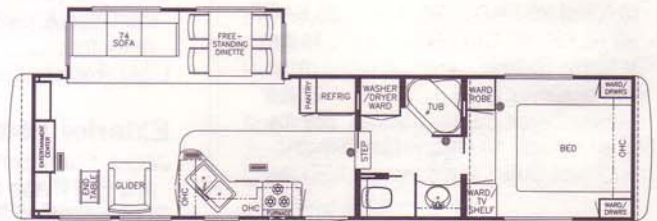
34RLDK



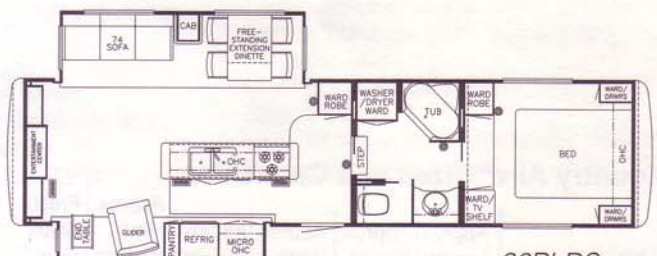
36RKDS



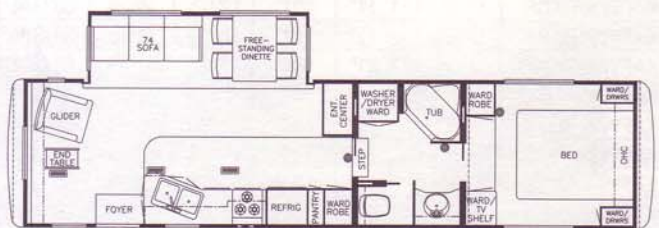
36RKWB



36RLDK



36RLDS



36RLWB

Prices, specifications and floor plans are subject to change at Newmar's discretion without prior written notice or obligation. Some



## 1996 Optional Features

### Air Conditioning & Heating

Air Conditioner, Brisk Air 13.5M BTU (extra).....105 lbs.  
Air Conditioner, Brisk Air 15M BTU (extra).....110 lbs.  
Air Conditioner, Brisk Air 15M BTU in Place of 13.5M.....10 lbs.  
LP Leak Detector.....1 lbs.

### Appliances & Accessories

Dishwasher (33 WRKD, 34 RKSA, 36 RKDS, 36 RKSA, 36 RKWB, 39 RKWB, 39 WRKD).....75 lbs.  
Icemaker Added to Dometic Refrigerator.....5 lbs.  
Microwave Oven, 22".....40 lbs.  
Microwave Oven, Convection 30" w/3-Burner Hot Plate (except 36 RLDS).....75 lbs.  
Refrigerator, Dometic Side-by-Side (except 36 RKDS, 36 RLDS, 36 SADS, 39 RLDK, 40 CKDB).....75 lbs.  
TV Video Switch.....1 lbs.  
Washer/Dryer Prep.....22 lbs.  
Washer/Dryer, Sears.....269 lbs.  
Water heater, 10 Gallon Gas/Electric w/Direct Spark Ignition.....1 lbs.

### Cabinets & Furniture

Bed, Twins (not available with cabover slideout).....50 lbs.  
Cabinetry, Bleached Oak Hardwood.....0 lbs.  
Cabinetry, Cherry Hardwood w/Raised Panel Cathedral Doors.....0 lbs.  
Honeymoon Suite Bedroom.....100 lbs.  
Sofa Storage Cabinet (except 36 SADS, 40 LSDK).....25 lbs.

### Chassis Features

Suspension Mor Ryde w/Heavy Duty Shock Absorbers (per axle).....25 lbs.

### Electrical Features

Battery, Thermoil (extra).....42 lbs.  
Gen, 6.5 KW Onan w/Automatic Changeover & Battery.....350 lbs.  
Gen Prep (automatic changeover, remote start wire & carbon monoxide detector).....1 lbs.  
Light, Exterior Security (each).....1 lbs.

### Exterior Features

Jacks, Stabilizers 12 Volt Power Twins A & E in Place of Standard.....20 lbs.  
Roof & Radius, Top Wrap Gel-Coated Fiberglass (per foot).....10 lbs.  
Roof Rack & Ladder.....4 lbs.

### Exterior Features (continued)

Roof, Rubber  
Slideout in Cabover.....300 lbs.  
Slideout in Cabover w/Vanity Center.....410 lbs.  
Stone Guard Pull-Down, Vinyl Recessed in Front Fiberglass Cap.....15 lbs.

### Interior Features

Floor Covering, Ceramic Tile in Bath Area.....75 lbs.  
State Seal.....0 lbs.

### Plumbing / Bath Features

Water Filtering System w/Drink Dispenser (kitchen).....5 lbs.

### Windows, Awnings & Vents

Awning Side A & E 9000.....127 lbs.  
Awning Side Tension Rafter.....5 lbs.  
Awning Window A & E 9000 (per window).....5 lbs.  
Vent, 12 Volt Fantastic w/Rain Sensor in Kitchen (except 36 RLDS).....11 lbs.  
Window Glass, Dark Tinted & Safety.....0 lbs.  
Window, Picture 48 x 48 (door side of cabover).....20 lbs.  
Windows, Thermopane in Place of Standard.....400 lbs.

## Kountry Aire® Sizes and Capacities

| Unit       | Approx. Length | Approx. Height | Approx. Width | Approx. Weight | Approx. Hitch Weight | Fresh Water Cap. | Grey Water Cap. | Sewage Water Cap. | Heating Cap. | No. Axle | Axle Cap. | Tire          | GAWR | GVWR  |
|------------|----------------|----------------|---------------|----------------|----------------------|------------------|-----------------|-------------------|--------------|----------|-----------|---------------|------|-------|
| KAFW33WRKD | 34' 5"         | 11' 11"        | 101"          | 11025          | 2125                 | 68 GAL           | 49 GAL          | 49 GAL            | 40000        | 2        | 7000      | 235-85 R 16 E | 6000 | 14000 |
| KAFW34RKSA | 35' 8"         | 11' 11"        | 101"          | 11050          | 2150                 | 68 GAL           | 49 GAL          | 49 GAL            | 40000        | 2        | 7000      | 235-85 R 16 E | 6000 | 14000 |
| KAFW34RLDK | 35' 8"         | 11' 11"        | 101"          | 11050          | 2150                 | 68 GAL           | 49 GAL          | 49 GAL            | 40000        | 2        | 7000      | 235-85 R 16 E | 6000 | 14000 |
| KAFW36RKDS | 37' 3"         | 11' 11"        | 101"          | 12975          | 2825                 | 68 GAL           | 49 GAL          | 49 GAL            | 55000        | 3        | 7000      | 235-85 R 16 E | 6000 | 18000 |
| KAFW36RKSA | 37' 3"         | 11' 11"        | 101"          | 12650          | 2850                 | 68 GAL           | 49 GAL          | 49 GAL            | 55000        | 3        | 7000      | 235-85 R 16 E | 6000 | 18000 |
| KAFW36RKWB | 37' 3"         | 11' 11"        | 101"          | 11925          | 2725                 | 68 GAL           | 49 GAL          | 49 GAL            | 55000        | 3        | 7000      | 238-85 R 16 E | 6000 | 18000 |
| KAFW36RLDK | 37' 3"         | 11' 11"        | 101"          | 12125          | 2250                 | 68 GAL           | 49 GAL          | 49 GAL            | 55000        | 3        | 7000      | 235-85 R 16 E | 6000 | 18000 |
| KAFW36RLDS | 37' 3"         | 11' 11"        | 101"          | 12000          | 2250                 | 68 GAL           | 49 GAL          | 49 GAL            | 55000        | 3        | 7000      | 235-85 R 16 E | 6000 | 18000 |
| KAFW36RLWB | 37' 3"         | 11' 11"        | 101"          | 11900          | 2825                 | 68 GAL           | 49 GAL          | 49 GAL            | 55000        | 3        | 7000      | 235-85 R 16 E | 6000 | 18000 |
| KAFW36SADS | 37' 3"         | 11' 11"        | 101"          | 12475          | 2975                 | 68 GAL           | 49 GAL          | 49 GAL            | 55000        | 3        | 7000      | 235-85 R 16 E | 6000 | 18000 |
| KAFW36SKDS | 37' 3"         | 11' 11"        | 101"          | 12100          | 2250                 | 68 GAL           | 49 GAL          | 49 GAL            | 55000        | 3        | 7000      | 235-85 R 16 E | 6000 | 18000 |
| KAFW39RKSA | 39'            | 11' 11"        | 101"          | 11675          | 2500                 | 68 GAL           | 49 GAL          | 49 GAL            | 55000        | 3        | 7000      | 235-85 R 16 E | 6000 | 18000 |
| KAFW39RKWB | 39'            | 11' 11"        | 101"          | 13225          | 2825                 | 68 GAL           | 49 GAL          | 49 GAL            | 55000        | 3        | 7000      | 235-85 R 16 E | 6000 | 18000 |
| KAFW39RLDK | 39'            | 11' 11"        | 101"          | 12900          | 2525                 | 68 GAL           | 49 GAL          | 49 GAL            | 55000        | 3        | 7000      | 235-85 R 16 E | 6000 | 18000 |
| KAFW39WRKD | 39'            | 11' 11"        | 101"          | 12700          | 2775                 | 68 GAL           | 49 GAL          | 49 GAL            | 55000        | 3        | 7000      | 235-85 R 16 E | 6000 | 18000 |
| KAFW40CKDA | 40' 2"         | 11' 11"        | 101"          | 13100          | 2825                 | 68 GAL           | 49 GAL          | 49 GAL            | 55000        | 3        | 7000      | 235-85 R 16 E | 6000 | 18000 |

## Kountry Aire® Chassis Information



# Kountry Aire® 5th Wheel

## 1996 Standard Features

### Air Conditioning & Heating

Air Conditioner, Central Brisk Air 13.5M BTU (1)  
Heat, in Floor Ducted  
LP Gas Bottles, 2-40# w/Auto Regulator  
& See Level Gauges on Slides

### Appliances & Accessories

Ceiling Fan  
Microwave Prep  
Range Cover, Laminated w/Matching Countertop Material  
Range Hood w/Light & Fan (except 36 RLDS)  
Range, Wedgewood 3-Burner w/Black Glass Oven Door  
Refrigerator, Dometic Royale 3862  
Refrigerator, Front Framed Hardwood Raised Panel  
Stereo, AM/FM Cassette w/Clock  
Telephone Hookup w/Jack (1)  
TV Antenna w/Power Booster & (2) Jacks  
TV, Cable Ready  
TV Jack for Exterior Use on Door Side  
Water Heater, 10 Gallon Gas/Electric w/Reigniter

### Cabinets & Furniture

Bed, Queen (60" x 80") w/Pillow Top Mattress  
Cabinetry, Oak Hardwood w/Raised Panel Cathedral Doors  
Chair End Table w/Beveled Glass Top (except 40 LSDK & 40CKDB)  
Chair, Flexsteel Swivel Glider/Recliner (except 40 LSDK)  
Corian Countertop & Lavatory Bowl in Bath  
Corian Countertop in Kitchen w/Recessed Sink  
Dinette Table w/Extension Top & Four Fully Upholstered Chairs (36 RLDS)  
Dinette Table w/Glass Top & Four Fully Upholstered Chairs (except 36 RLDS)  
Drawers w/Metal Guides & Side Rollers  
Lazy Susan (except 36 RLDS, 40 LSDK)  
Lifts for Convenient Storage Under Fixed Beds  
Molded Silverware Divider Tray  
Pull-Out Pantry (except 33 WRKD, 34 RKSA, 36 RKDS, 36 RKSA, 36 RKWB, 39 RKSA, 39 RKWB, 39 WRKD)  
Sofa, Flexsteel Residential Non-Sleeper (except 40 LSDK)  
Sofa, Flexsteel Sectional w/68" Hide-a-Bed & Incliner (40 LSDK)

### Chassis Features

Frame Size, 12" I-Beam & Molded Wrap  
Maximum Storage (except 36 RKDS, 36 RLDS, 36 SADS, 36 SKDS)

### Chassis Features (continued)

Shock Absorbers  
Skid Bars for Rear Bottom Protection  
Spare Tire

### Electrical Features

Battery, Thermoil (12 volt)  
Converter, 75 AMP w/Charger  
Electrical Service, 50 AMP  
Lighting, Fluorescent Recessed in Ceiling  
Lights in Raised Bath Floor Storage Area & Front Storage Compartment  
Lights in Wardrobes w/Automatic Switches  
Lights, Interior Courtesy  
Midship Side Turn Signals  
Recepts 110 Volt w/Ground Fault Interrupter (interior & exterior)

### Exterior Features

Exterior Front & Rear Gel-Coated Fiberglass End Caps  
Exterior Sides, Gel-Coated Fiberglass  
Jack, 12 Volt Powered  
Jacks, Stabilizer (1 pair)  
Roof, Painted Aluminum  
Slideout, Large w/Flat Floor (see floorplans for availability & layout)  
Snaps for Fifth Wheel Jacks  
Stabilizer for Fifth Wheel Pin (built-in)

### Interior Features

Bedsprad, w/Matching Shams & Accent Pillow  
Ceiling, Woven Soft Touch  
Decorative Wall Clock & Mirror  
Floor Covering, Carpet Staintech, 45 oz. 100% Nylon Plush Saxony  
Floor Covering, Hardwood Plank in Kitchen & Foyer Area  
Sink Covers, (2)  
Smoke Detector & 5BC Fire Extinguisher  
Window Garnish (residential style)  
Window Treatment, Day/Night Pleated Shades & Lined Drapes  
Window Treatment, Mini Blinds (kitchen)

### Plumbing / Bath Features

Bath Accessories, Brass (1 each-towel bar, tissue holder, towel ring & robe hook)  
Faucet for Kitchen Sink, Single Handle High Rise (Moen)  
Faucet for Shower & Lavatory, Single Handle (Moen)  
Monitor Panel  
Sewage Holding Tank Rinse  
Stool, China w/Spray Attachment  
Tub/Shower, Fiberglass w/Enclosure  
Tub/Shower Wall Light  
Winterize Convenience Package (w/water heater bypass)

### Construction Features

Floor Decking Structurewood  
Insulation, 1/4" Foam Board Exterior Roof  
Insulation, Fiberglass R7 Sidewalls, R19 Floor & Roof  
Insulation, Foam 5/8" Laminated in Sidewalls & Ceiling  
Rear Bumper w/Slide-Out Tray for Spare Tire  
Structure, Aluminum Sidewalls & Roof  
Structure, Widebody  
Underbelly, Enclosed Aluminum w/Laminated 5/8" Foam

### Windows, Awnings & Vents

Door Bell  
Exterior Lighted Acrylic Assist Handle (at main entrance door)  
Radius Entrance Door w/Deadbolt & Lighted Step  
Skylight in Bathroom w/Soft Shade Step, Triple  
Vent, 12 Volt in Bath Area w/Wall Switch  
Windows, Radius Torque





## 1996 Optional Features

### Air Conditioning & Heating

|  |          |
|--|----------|
| Air Conditioner, Brisk Air             |          |
| 13.5 BTU (extra).....                  | 105 lbs. |
| Air Conditioner, Brisk Air             |          |
| 15M BTU (extra).....                   | 110 lbs. |
| Air Conditioner, Brisk Air             |          |
| 15M BTU in Place of 13.5M....          | 10 lbs.  |
| LP Gas Bottles, 2-40# w/Auto Regulator |          |
| & See Level Gauges on                  |          |
| Slides.....                            | 20 lbs.  |
| LP Leak Detector.....                  | 1 lbs.   |

### Appliances & Accessories

|                                  |          |
|----------------------------------|----------|
| Ceiling Fan.....                 | 10 lbs.  |
| Icemaker Added to Dometic        |          |
| Refrigerator.....                | 5 lbs.   |
| Microwave Oven, 22".....         | 40 lbs.  |
| Microwave Oven, Convection 30"   |          |
| w/3-Burner Hot Plate             |          |
| (except 36 RLDS).....            | 75 lbs.  |
| Telephone Hookup w/Jack (1)..... | 1 lbs.   |
| TV Jack for Exterior Use         |          |
| on Door Side.....                | 1 lbs.   |
| TV Video Switch w/VCR Prep.....  | 1 lbs.   |
| Washer/Dryer Prep.....           | 22 lbs.  |
| Washer/Dryer, Sears.....         | 269 lbs. |

### Cabinets & Furniture

|  |         |
|--|---------|
| Bed, Twins (not Available with cabover |         |
| slideout).....                         | 50 lbs. |
| Cabinetry, Bleached Oak                |         |
| Hardwood.....                          | 25 lbs. |

### Cabinets & Furniture (Continued)

|                                       |          |
|---------------------------------------|----------|
| Cabinetry, Oak Hardwood.....          | 25 lbs.  |
| Honeymoon Suite Bedroom.....          | 100 lbs. |
| Sofa Storage Cabinet (except 36 SADS, |          |
| 40 LSDK).....                         | 20 lbs.  |

### Chassis Features

|                                       |         |
|---------------------------------------|---------|
| Spare Tire (16" E range) (36 RKDS,    |         |
| 36 RLDS, 36 SADS, 36 SKDS,            |         |
| All 39 & 40).....                     | 90 lbs. |
| Spare Tire (16" G range) (33 WRKD, 34 |         |
| RKSA, 34 RLDK, 36 RKSA, 36 RKWB,      |         |
| 36 RLDK, 36 RLWB).....                | 90 lbs. |
| Suspension, Mor Ryde w/Heavy Duty     |         |
| Shock Absorbers (per                  |         |
| axle).....                            | 25 lbs. |

### Electrical Features

|                                      |          |
|--------------------------------------|----------|
| Battery, Thermoil (extra).....       | 42 lbs.  |
| Electrical Service, 50 AMP.....      | 20 lbs.  |
| Gen, 6.5 KW Onan w/Automatic         |          |
| Changeover & Battery.....            | 350 lbs. |
| Gen Prep (automatic changeover,      |          |
| remote start wire & carbon           |          |
| monoxide detector).....              | 1 lbs.   |
| Light, Exterior Security (each)..... | 1 lbs.   |
| Lighting, Fluorescent Recessed       |          |
| in Ceiling.....                      | 1 lbs.   |

### Exterior Features

|  |         |
|--|---------|
| Jacks, Stabilizers 12 Volt Power Twins |         |
| A & E in Place of Standard.....        | 20 lbs. |
| Roof, Gel-Coated Fiberglass            |         |
| (per foot).....                        | 8 lbs.  |
| Roof Rack & Ladder.....                | 4 lbs.  |
| Roof, Rubber                           |         |

### Exterior Features (Continued)

|                                |          |
|--------------------------------|----------|
| Slideout in Cabover.....       | 300 lbs. |
| Slideout in Cabover            |          |
| w/Vanity Center.....           | 410 lbs. |
| Stabilizer for Fifth Wheel Pin |          |
| (built-in).....                | 25 lbs.  |
| Stone Guard Pull-Down          |          |
| Vinyl Recessed in Front        |          |
| Fiberglass Cap.....            | 15 lbs.  |

### Interior Features

|                                     |         |
|-------------------------------------|---------|
| Floor Covering, Carpet in Bath..... | 30 lbs. |
| Floor Covering, Hardwood Plank      |         |
| in Kitchen & Foyer Area.....        | 30 lbs. |
| State Seal.....                     | 0 lbs.  |

### Plumbing / Bath Features

|  |        |
|--|--------|
| Sewage Holding Tank Rinse.....           | 1 lbs. |
| Water Filtering System w/Drink Dispenser |        |
| (kitchen).....                           | 5 lbs. |

### Windows, Awnings & Vents

|  |          |
|--|----------|
| Awning, Side A & E 8500.....             | 83 lbs.  |
| Awning, Side Tension Rafter.....         | 5 lbs.   |
| Awning, Window A & E 8500 (per           |          |
| window).....                             | 5 lbs.   |
| Skylight in Bathroom w/Soft              |          |
| Shade.....                               | 2 lbs.   |
| Vent, 12 Volt Fantastic w/Rain Sensor in |          |
| Kitchen (except 36 RLDS).....            | 11 lbs.  |
| Window Glass, Dark Tinted & Safety       |          |
| (each).....                              | 0 lbs.   |
| Window, Picture 48x48 (door side of      |          |
| cabover).....                            | 20 lbs.  |
| Windows, Thermopane in Place of          |          |
| Standard.....                            | 400 lbs. |

## Mountain Aire® Sizes and Capacities

| Unit       | Approx.<br>Length | Approx.<br>Height | Approx.<br>Width | Approx.<br>Weight | Approx.<br>Hitch<br>Weight | Fresh<br>Water<br>Cap. | Grey<br>Water<br>Cap. | Sewage<br>Water<br>Cap. | Heating<br>Cap. | No.<br>Axle | Axle<br>Cap. | Tire          | GAWR | GVWR  |
|------------|-------------------|-------------------|------------------|-------------------|----------------------------|------------------------|-----------------------|-------------------------|-----------------|-------------|--------------|---------------|------|-------|
| MAFW33WRKD | 34' 5"            | 11' 11"           | 101"             | 10700             | 1900                       | 68 GAL                 | 49 GAL                | 49 GAL                  | 40000           | 2           | 7000         | 235-85 R 16 E | 6000 | 14000 |
| MAFW34RKSA | 35' 8"            | 11' 11"           | 101"             | 11000             | 2175                       | 68 GAL                 | 49 GAL                | 49 GAL                  | 40000           | 2           | 7000         | 235-85 R 16 E | 6000 | 14000 |
| MAFW34RLDK | 35' 8"            | 11' 11"           | 101"             | 10050             | 2150                       | 68 GAL                 | 49 GAL                | 49 GAL                  | 40000           | 2           | 7000         | 235-85 R 16 E | 6000 | 14000 |
| MAFW36RKDS | 37' 3"            | 11' 11"           | 101"             | 11950             | 2800                       | 68 GAL                 | 49 GAL                | 49 GAL                  | 55000           | 3           | 6000         | 235-85 R 16 E | 6000 | 18000 |
| MAFW36RKSA | 37' 3"            | 11' 11"           | 101"             | 11250             | 2650                       | 68 GAL                 | 49 GAL                | 49 GAL                  | 55000           | 2           | 7000         | 235-85 R 16 G | 7000 | 15000 |
| MAFW36RKWB | 37' 3"            | 11' 11"           | 101"             | 11375             | 2475                       | 68 GAL                 | 49 GAL                | 49 GAL                  | 55000           | 2           | 7000         | 238-85 R 16 G | 7000 | 15000 |
| MAFW36RLDK | 37' 3"            | 11' 11"           | 101"             | 12000             | 2875                       | 68 GAL                 | 49 GAL                | 49 GAL                  | 55000           | 2           | 7000         | 235-85 R 16 G | 7000 | 15000 |
| MAFW36RLDS | 37' 3"            | 11' 11"           | 101"             | 13175             | 2875                       | 68 GAL                 | 49 GAL                | 49 GAL                  | 55000           | 3           | 6000         | 235-85 R 16 E | 6000 | 18000 |
| MAFW36RLWB | 37' 3"            | 11' 11"           | 101"             | 11175             | 2550                       | 68 GAL                 | 49 GAL                | 49 GAL                  | 55000           | 2           | 7000         | 235-85 R 16 G | 7000 | 15000 |
| MAFW36SADS | 37' 3"            | 11' 11"           | 101"             | 12500             | 3375                       | 68 GAL                 | 49 GAL                | 49 GAL                  | 55000           | 3           | 6000         | 235-85 R 16 E | 6000 | 18000 |
| MAFW36SKDS | 37' 3"            | 11' 11"           | 101"             | 12125             | 2725                       | 68 GAL                 | 49 GAL                | 49 GAL                  | 55000           | 3           | 6000         | 235-85 R 16 E | 6000 | 18000 |
| MAFW39RKSA | 39'               | 11' 11"           | 101"             | 13075             | 2900                       | 68 GAL                 | 49 GAL                | 49 GAL                  | 55000           | 3           | 6000         | 235-85 R 16 E | 6000 | 18000 |
| MAFW39RKWB | 39'               | 11' 11"           | 101"             | 12600             | 2925                       | 68 GAL                 | 49 GAL                | 49 GAL                  | 55000           | 3           | 6000         | 235-85 R 16 E | 6000 | 18000 |
| MAFW39RLDK | 39'               | 11' 11"           | 101"             | 12675             | 2950                       | 68 GAL                 | 49 GAL                | 49 GAL                  | 55000           | 3           | 6000         | 235-85 R 16 E | 6000 | 18000 |
| MAFW39WRKD | 39'               | 11' 11"           | 101"             | 12750             | 2800                       | 68 GAL                 | 49 GAL                | 49 GAL                  | 55000           | 3           | 6000         | 235-85 R 16 E | 6000 | 18000 |
| MAFW40CKDA | 40' 2"            | 11' 11"           | 101"             | 13000             | 2725                       | 68 GAL                 | 49 GAL                | 49 GAL                  | 55000           | 3           | 6000         | 235-85 R 16 E | 6000 | 18000 |

## Mountain Aire® Chassis Information



# Mountain Aire® 5th Wheel

## 1996 Standard Features

### Air Conditioning & Heating

Air Conditioner, Central Brisk Air 13.5M BTU (1)  
Heat, in Floor Ducted  
LP Gas Bottles, 2-30# w/Automatic Regulator

### Appliances & Accessories

Microwave Prep  
Range Cover  
Range Hood w/Light & Fan (except 36 RLDS)  
Range, Wedgewood 3-Burner w/Black Glass Oven Door  
Refrigerator, Dometic Royale 3862  
Refrigerator Front, Black Plexiglass  
Stereo, AM/FM Cassette w/Clock  
TV Antenna w/Power Booster & (2) Jacks  
TV, Cable Ready  
Water Heater, 10 Gallon Gas/Electric w/Reigniter

### Cabinets & Furniture

Bed, Queen (60" x 80")  
Cabinetry, Oak w/Raised Panel Cathedral Doors  
Chair End Table (not available on 40 LSDK)  
Chair, Flexsteel Swivel Glider/Recliner (except 40 LSDK)  
Drawers w/Metal Guides & Side Rollers  
Lifts for Convenient Storage Under Fixed Beds  
Molded Silverware Divider Tray  
Sofa, Flexsteel (sleeper)  
Sofa, Flexsteel Sectional w/68" Hide-a-Bed & Incliner (40 LSDK)

### Chassis Features

Easy Lube Equalizers  
Frame Size, 12" I-Beam & Molded Wrap  
Maximum Storage (except 36 RKDS, 36 RLDS, 36 SADS, 36 SKDS)  
Frame Size, 16" I-Beam & Molded Wrap  
maximum Storage (36 RKDS, 36 RLDS, 36 SADS, 36 SKDS)  
Shock Absorbers  
Skid Bars for Rear Bottom Protection

### Electrical Features

Battery, Thermoil (12 volt)  
Converter, 75 AMP w/Charger  
Electrical Service, 30 AMP  
Lights in Raised Bath Floor Storage Area & Front Storage Compartment  
Lights in Wardrobes  
Recepts, 110 Volt w/Ground Fault Interrupter (interior & exterior)

### Exterior Features

Exterior Front & Rear, Gel-Coated  
Fiberglass End Caps  
Exterior Sides, Gel-Coated Fiberglass  
Jack, 12 Volt Powered  
Jacks, Stabilizer (1 pair)  
Roof, Painted Aluminum  
Slideout, Large w/Flat Floor (see floor plans for availability & layout)

### Interior Features

Bedsread, Quilted w/Reversed Sham & Accent Pillow  
Ceiling, Woven Soft Touch  
Decorative Wall Clock & Mirror  
Floor Covering, Carpet Staintech, 45 oz.  
100% Nylon Plush Saxony

### Interior Features (Continued)

Floor Covering, Carpet w/High Density Pad  
Floor Covering, Vinyl in Kitchen, Bath & Foyer  
Sink Covers, (2)  
Smoke Detector & 5BC Fire Extinguisher  
Window Treatment, Day/Night Pleated Shades & Lined Drapes  
Window Treatment, Mini Blinds (kitchen)

### Plumbing / Bath Features

Bath Accessories, White (2 towel bars, 1 tissue holder & robe hook)  
Monitor Panel  
Stool, Aqua Magic IV  
Tub/Shower, Fiberglass w/Enclosure  
Tub/Shower, Wall Light  
Winterize Convenience Package (w/water heater bypass)

### Construction Features

Floor Decking, Structurewood  
Insulation, 1/4" Foam Board Exterior Roof  
Insulation, Fiberglass R7 Sidewalls, R19 Floor & Roof  
Insulation, Foam 5/8" Laminated in Sidewalls & Ceiling  
Rear Bumper w/Slideout Tray for Spare Tire  
Structure, Aluminum Sidewalls & Roof  
Structure, Widebody  
Underbelly, Enclosed Aluminum w/Laminated 5/8" Foam

### Windows, Awnings & Vents

Radius Entrance Door w/Deadbolt & Lighted Step  
Step, Triple  
Vent, 12 Volt in Bath Area w/Wall Switch  
Windows, Radius Torque





# Mountain Aire • Kountry Aire

Fifth Wheels by Newmar



1996 Mountain Aire® Fifth Wheel



1996 Kountry Aire® Fifth Wheel

1996 Specifications and Floor Plans





1996 *Mountain Aire*



1996 KOUNTRY AIRE

*Uncompromising work standards are only a part of what Newmar's world-class quality is all about. Professionals working together to produce distinctive, dependable and durable products that will serve you for many years. Our aim is to maintain the highest standards in quality and customer service.*

*We invite you to visit our new, built in 1995, state-of-the-art production facility in Nappanee, Indiana. Tours are offered weekdays at 10:00 A.M. and 2:00 P.M. E.S.T.*

Mahlon Miller  
Chairman of the Board

Don't forget to check out the Klub - the Newmar Kountry Klub, that is. All you need to be eligible is to be the proud owner of any one of the fine Newmar recreational vehicles.

***Newmar Kountry Klub***

Compliments of:



*An American Tradition of Excellence.*

355 N DELAWARE ST



*The Kountry Aire®  
5th Wheel is an  
excellent example  
of the design and  
craftsmanship  
that places  
Newmar ahead  
of the competition.*

*A full length, sliding, mirrored door and overhead cabinets enhance the beauty of this richly appointed bedroom. The queen sized bed is incorporated into a slideout, providing more floor space. Another fine example of the comfort and elegant details that go into a Kountry Aire®.*



*This unique Island Kitchen has all the features of home. There's overhead cabinets, lots of cupboard and drawer space, not to mention the built-in stove and hardwood floors. There's even a fold-down countertop leaf for additional work space!*



*Whether a small snack or a lavish meal, the dining area is ready to serve you in classic style.*







*The Kountry Aire® flat floor slideout makes both the living room and dining area as open and comfortable as home. The slideout ceiling maximizes headroom by gently sloping to match the profile of the exterior roof.*

## KOUNTRY AIRE

**Y**ou'll feel like royalty as you take to the highways in a Kountry Aire® 5th Wheel by Newmar. On the road or standing alone, you'll notice many an admiring passerby who, undoubtedly, will turn for a second look.

A mainstay in Newmar's lineup, the Kountry Aire 5th Wheel is an excellent example of the design and craftsmanship that places Newmar ahead of the competition.

The innovative success of the flat floor slideout room is high on the list. With the

mere push of a button, the slideout room quietly moves into place, matching the existing floor flat and level. Newmar was an early pioneer of the slideout and has developed the flat floor design, continuing to fulfill their traditional role as a leader in slideout technology. Richly

furnished interiors, displaying carefully selected hardwood floors and cabinets, complement each room. A variety of optional floor plans gives you an opportunity to decide which arrangement is best suited to your tastes.



*Newmar's exclusive slideout design is so unique, they have a United States patent pending on their*

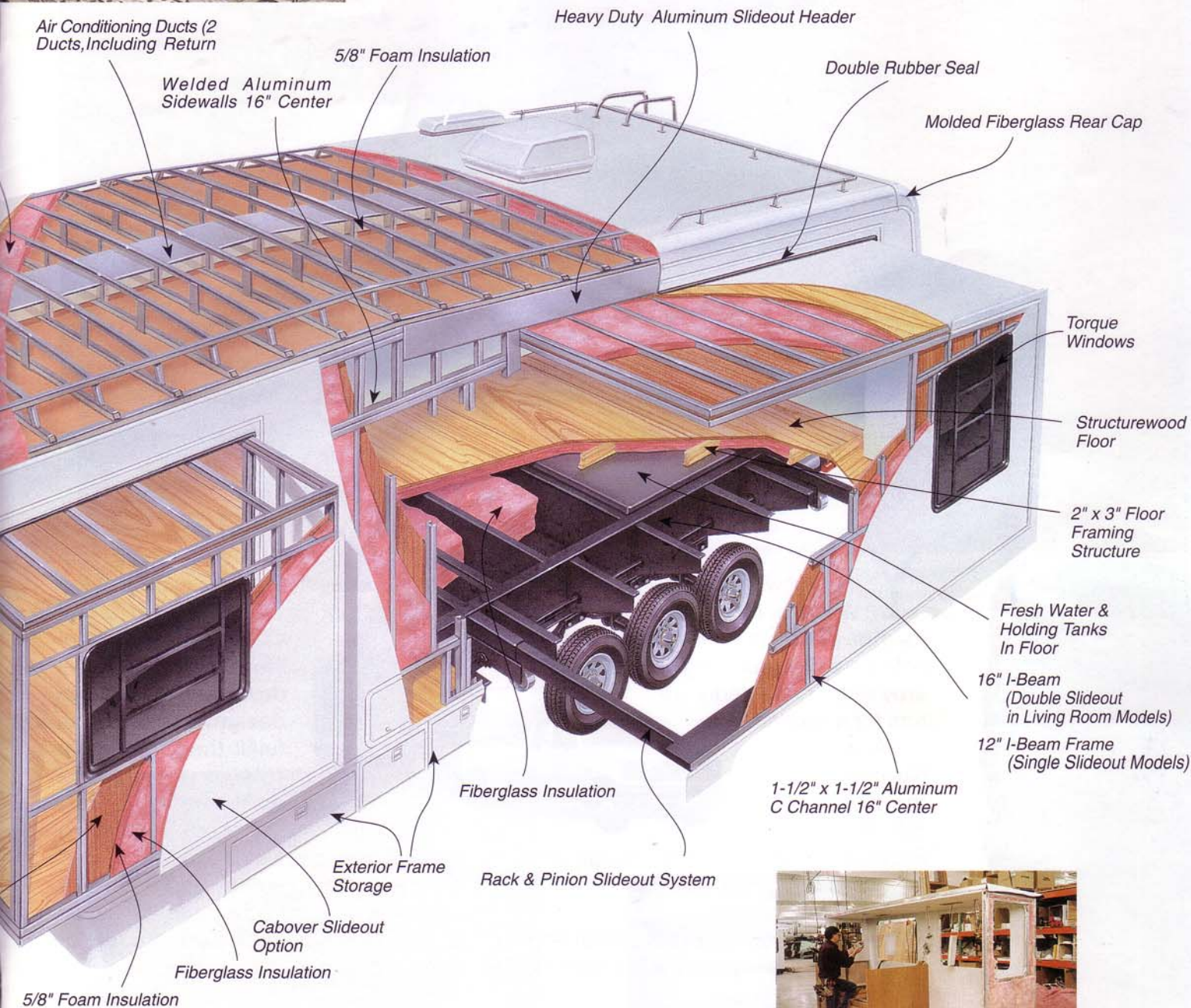




Welded aluminum sidewalls are built with 16" on center framing, providing the strongest and most durable construction.



Newmar engineers are specially trained on the latest CAD systems to continually provide new and innovative approaches to their designs.



Old World Craftsmanship and attention to details are a way of life in the on-site custom wood shop. Every item is crafted by



Newmar's slideout technology is as



# Typical Mountain Aire Kountry Aire Construction by Newmar

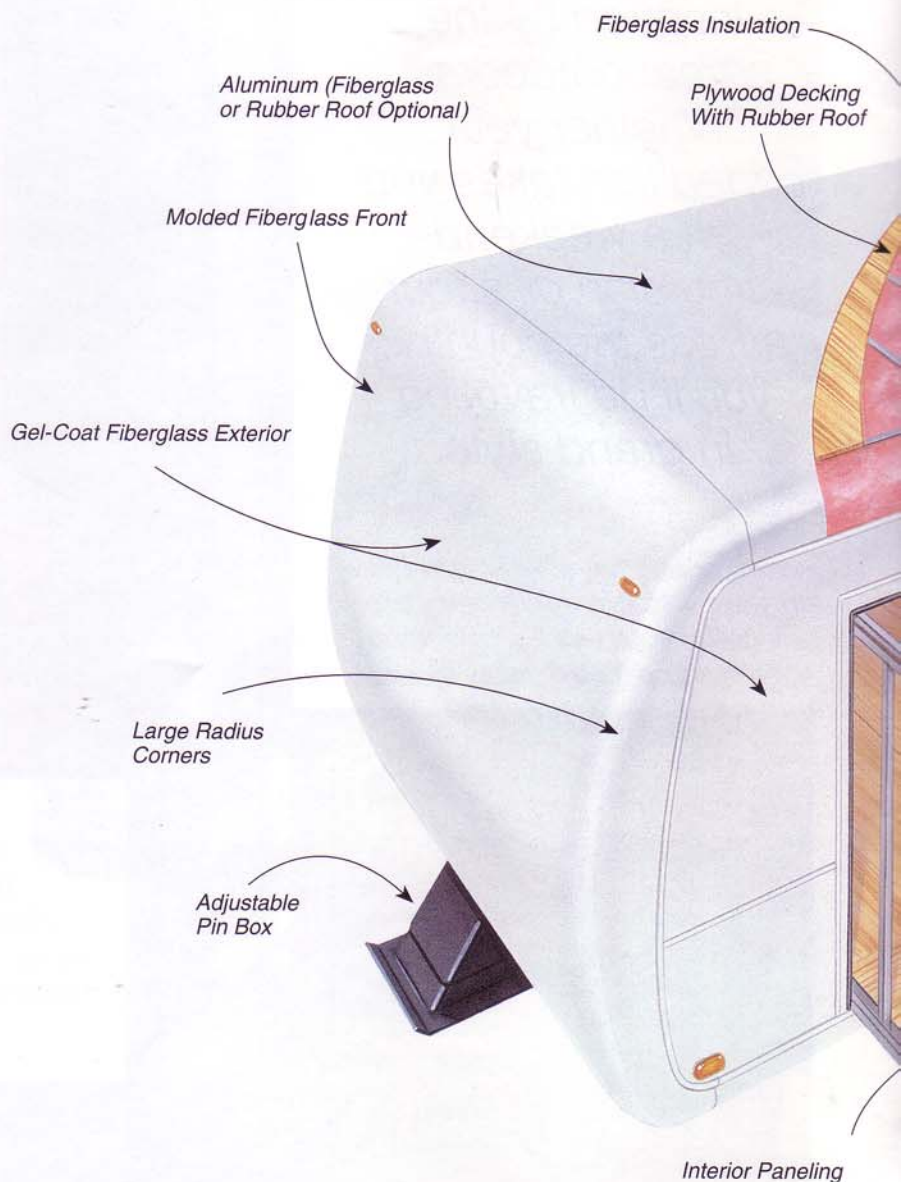
Newmar's reputation is built upon years of dependable service and high quality standards. Their blend of old-world craftsmanship with new technological advances isn't just part of the job, it's a way of life. You are invited to see for yourself just how this way of life works. Scheduled plant tours are available throughout the year, presenting you with an opportunity to evaluate the high standard of workmanship that Newmar demands. The plant is located in the heart of Amish Country in northern Indiana. Take a first-hand look at the care and precision involved in the building process. After just one visit, you'll feel that you've already become one of the family.



*An American Tradition of Excellence.*



*Truss style aluminum rafters are built 16" on center and central air conditioning duct work is incorporated into the design.*



*Each sidewall is constructed for strength and is heavily insulated for comfort. The inside consists of 5/8" of beaded foam, laminated to kraft paper and covered by interior paneling. Outside, the*



*Newmar Corporation  
eagerly invites you  
to explore  
the new and exciting  
Mountain Aire®  
5th Wheel,  
inspired by the  
great outdoors.  
Whether your  
expedition takes you  
on a weekend  
excursion or a tour  
across the country,  
you'll be traveling  
in grand style.*



*A gourmet's dream. That's the feeling you'll get while cooking in a Mountain Aire®. Name brand appliances are conveniently arranged in the well-planned kitchen. You'll find an array of finely crafted oak cabinets offering plenty of storage space.*



*The beautifully crafted entertainment center, designed to house your audio and video equipment, makes quite an impressive statement of the fine craftsmanship for which Newmar is well known.*

*Whether parked or on the move, the handsome Mountain Aire® is bound to turn heads. With all the comforts of home, this 5th wheel is awaiting your choice of destinations.*







*The promise of a sound night's sleep awaits you in the beautifully appointed bedroom.*

## *Mountain Aire*

On your very first outing, you'll discover the high level of comfort found in the beautiful interior surroundings of your Mountain Aire®. Newmar's team of experts takes pride in the elegant details displayed throughout, from the spacious living room, kitchen and dining room, to the cozy slideout bedroom with queen size bed. All beautifully, color coordinated. All the comforts of home!

The Mountain Aire® is comprised of more than good looks. You will probably never see the uncompromised structural quality that sets Newmar apart from the competition.

Features like all-welded aluminum sidewalls and truss-style rafters built 16" on center, 2" x 3" floor with decking, or the 10", 12" or 16" I-beam framework. All of these combine

to give you the most enjoyable traveling experience in a luxury class vehicle.

