

LONDON AIRE

1996 MOTORHOMES & FIFTH WHEELS



The Aire to Royalty.

LONDON AIRE

1996 MOTORHOMES & FIFTH WHEELS



1996 London Aire® Diesel Pusher



1996 London Aire® Fifth Wheel

Share in the benefits of joining the Newmar Kountry Klub, a "family" with a network of chapters throughout the United States and Canada.

All you need for eligibility is to be the proud owner of any one of the fine Newmar motorhomes or towables.

Newmar Kountry Klub



An American Tradition of Excellence.

355 N DELAWARE ST • PO BOX 30 • NAPPANEE IN 46550-0030 • (219) 773-7791 • Fax (219) 773-2895



LAFW 39RKS A



LAFW 40CKDA



LAFW 39RKWB



LAFW 40CKDB



LAFW 39RLDK



LAFW 40LSDK



LAFW 39WRKD

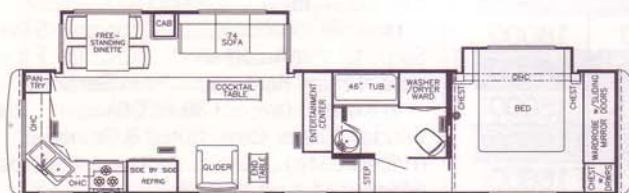
Prices, specifications and floor plans are subject to change at Newmar's discretion without prior written notice or obligation. Some floor plans may show optional chairs or end tables. See Dealer for availability.

LONDON AIRE

1996 FIFTH WHEEL FLOOR PLANS



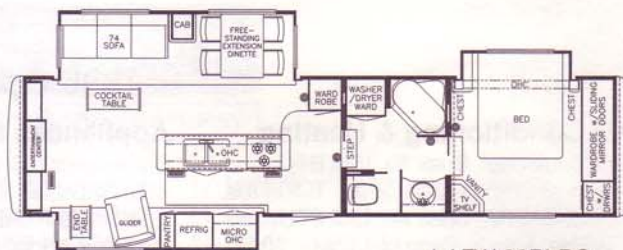
LAFW 36RKDS



LAFW 36RKSA



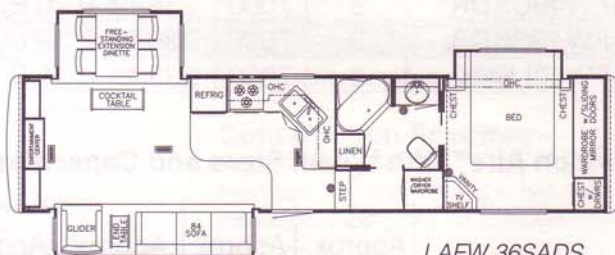
LAFW 36RKWB



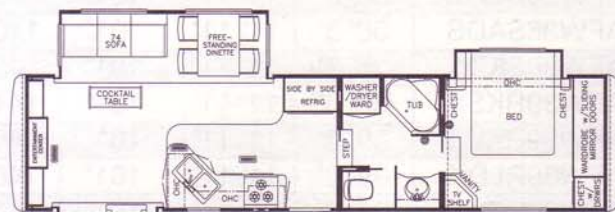
LAFW 36RLDS



LAFW 36RLWB



LAFW 36SADS



LAFW 36SKDS

1996 Optional Features

Air Conditioning & Heating

Air Conditioner, Brisk Air 15M BTU
w/Heat Strip (extra) 105 lbs.
Air Conditioner, Brisk Air 15M BTU
w/Heat Strip in Place of 13.5M.. 10 lbs.
Air Conditioner, Central Penguin 13.5M
BTU w/Heat Strip (extra) 105 lbs.
LP Leak Detector

Appliances & Accessories

Dishwasher (33 WRKD, 34 RKSA,
36 RKDS, 36 RKSA, 36 RKWB, 39
RKSA, 39 RKWB, 39 WRKD) 75 lbs.
Ice maker Added to Dometic
Refrigerator 5 lbs.
Washer/Dryer Prep 22 lbs.
Washer/Dryer, Sears 269 lbs.

Cabinets & Furniture

Cabinetry, Bleached Oak Hardwood ... 0 lbs.
Cabinetry, Oak Hardwood 0 lbs.
Sofa Storage Cabinet (except
36 SADS, 40 LSDK) 25 lbs.
Vanity Center 1 10 lbs.

Electrical Features

Gen, 6.5 KW Onan on Slides
w/Automatic Changeover
& Battery 314 lbs.
Gen Prep (automatic changeover,
remote start wire & carbon
monoxide detector) 1 lbs.

Exterior Features

Jacks, Stabilizers 12 Volt Power Twins
A & E in Place of Standard 20 lbs.

Interior Features

Floor Covering, Ceramic Tile in
Bath Area 75 lbs.
State Seal 0 lbs.

Windows, Awnings & Vents

Awning Window A & E 9000
(specify location) 5 lbs.
Step, 12 Volt Automatic 7 lbs.
Vent, 12 Volt Fantastic w/Rain Sensor
in Kitchen (except 36 RLDS) 11 lbs.
Window Glass, Dark Tinted & Safety
(priced each) 0 lbs.
Window, Picture 48 x 48
(door side of cabover) 20 lbs.
Windows, Thermopane in
Place of Standard 400 lbs.

London Aire® Fifth Wheel Chassis Information

Unit	No. Axles	Axle Cap.	Tire	GAWR	GVWR
LAFW36RKDS	3	7000	235-85 R 16 E	6000	18000
LAFW36RKSA	3	7000	235-85 R 16 E	6000	18000
LAFW36RKWB	3	7000	238-85 R 16 E	6000	18000
LAFW36RLDK	3	7000	235-85 R 16 E	6000	18000
LAFW36RLDS	3	7000	235-85 R 16 E	6000	18000
LAFW36RLWB	3	7000	235-85 R 16 E	6000	18000
LAFW36SADS	3	7000	235-85 R 16 E	6000	18000
LAFW36SKDS	3	7000	235-85 R 16 E	6000	18000
LAFW39RKSA	3	7000	235-85 R 16 E	6000	18000
LAFW39RKWB	3	7000	235-85 R 16 E	6000	18000
LAFW39RLDK	3	7000	235-85 R 16 E	6000	18000
LAFW39WRKD	3	7000	235-85 R 16 E	6000	18000
LAFW40CKDA	3	7000	235-85 R 16 E	6000	18000
LAFW40CKDB	3	7000	235-85 R 16 E	6000	18000
LAFW40LSDK	3	7000	235-85 R 16 E	6000	18000

London Aire® Fifth Wheel Sizes and Capacities

Unit	Approx. Length	Approx. Height	Approx. Width	Approx. Weight	Approx. Hitch Weight	Fresh Water Cap.	Grey Water Cap.	Sewage Water Cap.	Heating Cap.
LAFW36RKDS	36' 3"	11' 11"	101"	14700	3500	68 GAL	49 GAL	49 GAL	55000
LAFW36RKSA	36' 3"	11' 11"	101"	14250	3325	68 GAL	49 GAL	49 GAL	55000
LAFW36RKWB	36' 3"	11' 11"	101"	14000	3350	68 GAL	49 GAL	49 GAL	55000
LAFW36RLDK	36' 3"	11' 11"	101"	14225	3325	68 GAL	49 GAL	49 GAL	55000
LAFW36RLDS	36' 3"	11' 11"	101"	14025	3025	68 GAL	49 GAL	49 GAL	55000
LAFW36RLWB	36' 3"	11' 11"	101"	14250	3325	68 GAL	49 GAL	49 GAL	55000
LAFW36SADS	36' 3"	11' 11"	101"	14000	3300	68 GAL	49 GAL	49 GAL	55000
LAFW36SKDS	36' 3"	11' 11"	101"	14500	3475	68 GAL	49 GAL	49 GAL	55000
LAFW39RKSA	39' 0"	11' 11"	101"	14400	3400	68 GAL	49 GAL	49 GAL	55000
LAFW39RKWB	39' 0"	11' 11"	101"	14550	2800	68 GAL	49 GAL	49 GAL	55000
LAFW39RLDK	39' 0"	11' 11"	101"	14600	2950	68 GAL	49 GAL	49 GAL	55000
LAFW39WRKD	38' 2"	11' 11"	101"	14650	3100	68 GAL	49 GAL	49 GAL	55000
LAFW40CKDA	40' 0"	11' 11"	101"	14800	3300	68 GAL	49 GAL	49 GAL	55000
LAFW40CKDB	40' 0"	11' 11"	101"	14250	3025	68 GAL	49 GAL	49 GAL	55000

Optional Features

Appliances & Accessories

Washer/Dryer, Sears w/Pull-Out Shelf 269 lbs.

Cabinets & Furniture

Cabinetry, Bleached Oak Hardwood 0 lbs.

Cabinetry, Oak Hardwood 0 lbs.

Chair, Flexsteel High Back Recliner

Leather/Vinyl 30 lbs.

Chair, Flexsteel Large Recliner

w/Non-Sleeper Sofa (cloth)

Chair, Flexsteel Large Recliner

w/Non-Sleeper Sofa (leather/vinyl)

Interior Features

Floor Covering, Ceramic Tile in Bath Area . 75 lbs.

State Seal 0 lbs.

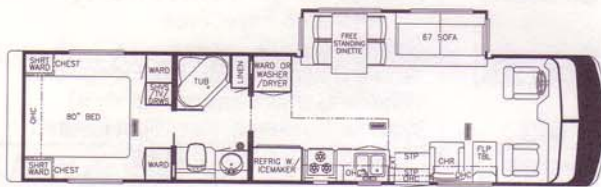
Windows, Awnings & Vents

Awning Slideout Cover 0 lbs.

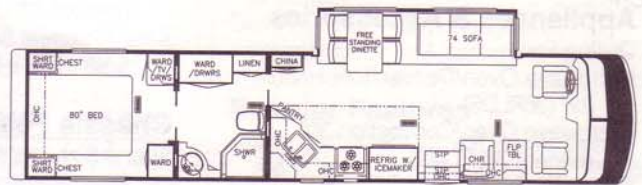
Windows, Thermopane in Place of

Standard 400 lbs.

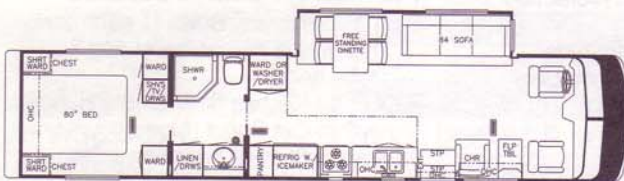
Prices, specifications and floor plans are subject to change at Newmar's discretion without prior written notice or obligation. Some floor plans may show optional chairs or end tables. See Dealer for availability.



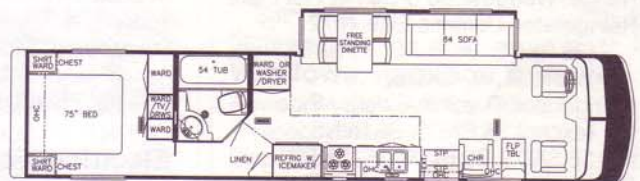
LP 3856



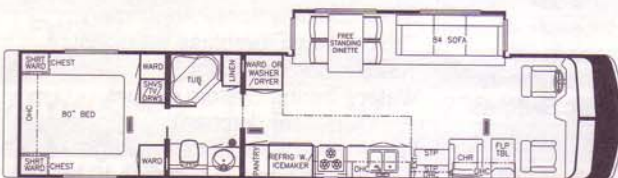
LP 4057



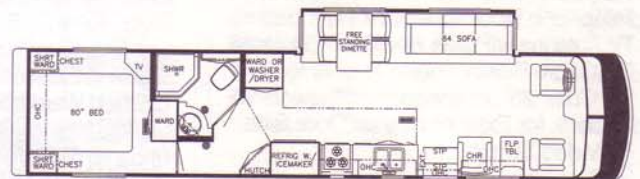
LP 4055



LP 4060



LP 4056



LP 4061

London Aire® Diesel Pusher Sizes and Capacities

Model	Exterior			Interior		Grey Tank	Sewage Tank	Water Tank	Furnace BT
	Length	Width	Height	Width	Height				
LP3856	38' 8"	101"	11' 8"	93"	78"	55 GAL	55 GAL	105 GAL	40000
LP4055	40' 8"	101"	11' 8"	93"	78"	55 GAL	55 GAL	105 GAL	40000
LP4056	40' 8"	101"	11' 8"	93"	78"	55 GAL	55 GAL	105 GAL	40000
LP4057	40' 8"	101"	11' 8"	93"	78"	55 GAL	55 GAL	105 GAL	40000
LP4060	40' 8"	101"	11' 8"	93"	78"	55 GAL	55 GAL	105 GAL	40000
LP4061	40' 8"	101"	11' 8"	93"	78"	55 GAL	55 GAL	105 GAL	40000

Lengths, Heights, Widths and Dry Weights are approximate.

London Aire® Diesel Pusher Spartan Chassis Information

Model	Chassis	Engine	Axle Ratio	Fuel Cap.	Wheel Base	GVWR	GCWR	Unloaded Vehicle Weight
LP3856	Spartan	300 HP	4.63	100 gal	252	29400	42000	22585
LP4055	Spartan	300 HP	4.63	150 gal	276	29400	42000	23095
LP4056	Spartan	300 HP	4.63	150 gal	276	29400	42000	23195
LP4057	Spartan	300 HP	4.63	150 gal	276	29400	42000	23195

LONDON AIRE

1996 DIESEL PUSHER STANDARD FEATURES

Air Conditioning & Heating

Air Conditioner, Central Penguin
13.5M BTU w/Heat Strip (2)
Heat, in Floor Ducted
LP Gas Tank, 42 Gallons
LP Leak Detector

Appliances & Accessories

Carbon Monoxide Detector
CB Radio
Cellular Telephone Antenna
Coffee Maker
Freezer, Norcold AC/DC (on slides) in
Exterior Storage Compartment
Horn (air)
Microwave Oven/Convection, 30"
Portable Vacuum
Range Cover, Laminated w/Matching
Countertop Material
Range, Recessed Wedgewood
3-Burner Hot Plate
Rear View Monitor System
Refrigerator, Dometic Side-by-Side
w/Icemaker
Refrigerator Front, Framed Hardwood
Raised Panel
Safe
Security System
Stereo, AM/FM Cassette w/Clock
Stereo, AM/FM Cassette w/Clock
(bedroom)
Telephone Hookup w/Jacks (2)
TV Antenna w/Power Booster & (2) Jacks
TV, 13" Color AC (in bedroom)
TV, 19" Color
TV Jack for Exterior Use on Door Side
TV Video Switch
VCR
Washer/Dryer Prep
Water Heater, 10 Gallon Gas/Electric,
Direct Spark Ignition & Engine Assist

Cabinets & Furniture

Cabinet Doors w/Positive Catches &
Knife Hinges
Cabinetry, Cherry Hardwood w/Raised
Panel Cathedral Doors
Corian Countertop & Lavatory Bowl
in Bath
Corian Countertop in Kitchen
w/Recessed Sink
Dinette Table, Hidden Leaf w/Four
Fully Upholstered Chairs
Drawers w/Metal Guides & Side Rollers
Front Seats, Flexsteel Leather/Vinyl
w/Power Lumbar Support
Lifts for Convenient Storage Under
Fixed Beds
Molded Silverware Divider Tray

Chassis Features

Chassis, Spartan Mountain Master
Raised Rail, Cummins 300 HP
Air Brakes w/Auto Slack Adjuster Front & Rear
Anti-Lock Braking System
Back-Up Alarm
Cruise Control
Dash Heater/Air Conditioner, High Output
Pack 8 Exhaust Engine Brake
Recessed Fuel Fill w/Locking Door
(1 on each side)
Steering Wheel, Tilt & Telescope
Suspension, Self Leveling Air Ride
Wheels, Polished Aluminum

Electrical Features

Battery Disconnect (coach & chassis batteries)
Battery, Thermoil (4-6 volt)
Daytime Headlight System
Electrical Service, 50 AMP w/12 Volt
Powered Rewind for Cord
Gen, 7.5 KW Onan (diesel) on Slides
w/Automatic Changeover
Inverter/Converter (Heart Freedom 20)
Light, Exterior Security (2 on each side)
Light, Spot w/Remote Control
Lighting, Fluorescent Recessed in Ceiling
Lights, Docking
Lights, Driving
Lights in Wardrobes w/Automatic Switches
Lights, Interior Courtesy
Midship Side Turn Signals
Recepts, 110 Volt w/Ground Fault
Interrupter (interior & exterior)
Switch for Emergency Chassis Engine Start

Exterior Features

Convex Exterior Mirrors w/Remote
Control, Defrost & Turn Signals
Exterior Front & Rear, Gel-Coated
Fiberglass End Caps
Exterior Sides, Gel-Coated Fiberglass
Hitch Receiver 4,000 lbs. w/Wire
Connector
Jacks, Hydraulic Leveling w/Automatic
Control
Mud Flaps (front & rear)
Roof & Radius Top Wrap, Gel-Coated
Fiberglass
Slideout, Large w/Flat Floor (see floor
plans for availability & layout)
Undercoating

Interior Features

Bedsprad, Quilted w/Matching
Shams & Accent Pillow
Ceiling, Woven Soft Touch
Decorative Wall Clock & Mirror
Designer Kitchen Area Rug

Interior Features (continued)

Floor Covering, Hardwood Plank in
Kitchen Area
Floor Mats Driver/Passenger
Sink Covers, (2)
Smoke Detector & 10BC Fire Extinguisher
Window Garnish (residential style)
Window Treatment, Day/Night Pleated
Shades & Shadow Boxes
Window Treatment, Mini Blinds (kitchen)

Plumbing / Bath Features

Bath Accessories, Brass (1 each-towel bar,
tissue holder, towel ring & robe hook)
Faucet at Kitchen Sink, Single Handle
w/Pull-Out Spout (Moen)
Faucet at Shower & Lavatory, Single
Handle (Moen)
Monitor Panel
Sewage Holding Tank Rinse
Stool, China w/Spray Attachment
Tub/Shower, Fiberglass w/Enclosure
Water Filtering/Drink
Dispenser (kitchen)
Water Hose w/Automatic Rewind & City
Water Hook-Up
Winterize Convenience Package
Water Heater Bypass Kit

Construction Features

Floor Decking, Structurewood
Insulation, 1/4" Foam Board Roof,
Fiberglass R7 Sidewalls &
Floor, R19 Roof Foam 5/8" Laminated
to Sidewalls & Ceiling
Structure, Aluminum Studding,
Sidewalls & Roof
Fiberglass, Contoured Sidewalls,
Exterior Skin w/Recessed Belt Line

Windows, Awnings & Vents

Awning, Side A & E 10000
Awning, Window A & E 9000
(on bedroom and slideout windows)
Door Bell
Door, Driver's Side w/Power Window
Entrance Door, Stepwell Tread Liner
Exterior Lighted Acrylic Assist Handle
(at main entrance door)
Skylight in Bathroom w/Soft Shade
Step, 12 Volt Automatic (double)
Vent, 12 Volt Fantastic w/Rain Sensor in
Bath & Kitchen
Windows, Radius Corners, Safety Glass,
Dark Tinted, Sliding in Living Area,
Awning Type in Bedroom

LONDON AIRE

1996 MOTORHOMES & FIFTH WHEELS



1996 London Aire® Diesel Pusher



1996 London Aire® Fifth Wheel

1996 Specifications & Floor Plans



An American Tradition of Excellence.



LONDON AIRE

1996 MOTORHOMES & FIFTH WHEELS

Uncompromising work standards are only a part of what Newmar's world-class quality is all about. Professionals working together to produce distinctive, dependable and durable products that will serve you for many years. Our aim is to maintain the highest standards in quality and customer service.

We invite you to visit our new, built in 1995, state-of-the-art production facility in Nappanee, Indiana. Tours are offered weekdays at 10:00 A.M. and 2:00 P.M. E.S.T.

Mahlon Miller
Chairman of the Board

Don't forget to check out the Klub - the Newmar Kountry Klub, that is. All you need to be eligible is to be the proud owner of any one of the fine Newmar recreational vehicles.

Newmar Kountry Klub

Compliments of:



An American Tradition of Excellence.

355 N DELAWARE ST
P O BOX 30
NAPPANEE IN 46550-0030
(219) 773-7791 • Fax (219) 773-2895



The large living room is perfect for a quiet night of relaxation or entertaining friends. The beautifully hand crafted cabinetry is made of the finest cherry wood or oak, providing you with an abundance of storage space.



The bedroom slideout provides additional floor space. The double mirrored sliding doors conceal ample closet space. Overhead cabinets are just right for extra

Continuing the look of royalty in the beautifully designed bedroom, is the richly crafted, cherry wood or oak wardrobe for ample clothing storage. A television, centered on the top shelf, provides the perfect location for your late night viewing. To complete the setting, a built-in vanity has also been included.



LONDON AIRE

1996 FIFTH WHEELS

When you are towing a London Aire® 5th wheel, you're putting it all behind you. Solid cabinets, handmade by skilled craftsmen, along with hardwood floors, professionally coordinated decor and other touches take the London Aire® to the top of its class.

Only the best will go into a London Aire®. From the carpet to the appliances, to the many electronic components, London Aire® is designed to please your senses. But the most important features of all are the ones you can't see. The sidewalls are comprised of welded, not bolted or riveted, aluminum framing and additional rolled insulation, entirely



wrapping each unit and providing an insulation R value as high as 22.

To add to your comfort, the central air conditioning duct work is built into the aluminum framed truss roofing system. The floor is made from 3" spruce joists covered with a sturdy decking and insulated with fiberglass to help maintain a constant comfort level and reduce road noise. It all rests on a steel 16" I-beam frame, adding strength and rigidity. There are no shortcuts to constructing a London Aire®. They're more than just beautiful. They're built.





A beveled, mirrored headboard accentuates the master bedroom, bordered by solid cherry cabinets.



You'll feel like royalty as you dine in this elegant setting with table for four. The richly appointed, color coordinated decor will surely please even the most discriminating of tastes.

...The Aire To Royalty.



This London Aire® dining room slides out, providing an extended view of your surroundings.



The dining room hutch is an attractive way to store and display your fine china. A fold-down front reveals a hidden desk,

It's unmistakably a London Aire®. From its sleek styling and large, aerodynamic radius corners to its wide body, powerful 300 Cummins diesel pusher engine, there is no equal to the London Aire®.



Slide behind the wheel and sink into the soft, leather, swiveling bucket seat. A quick check of the well laid out dash and you are ready to take off on adventures that belong exclusively to owners of a London Aire®. Call it your own personal executive retreat.



LONDON AIRE

A gel-coated fiberglass surface and large radius corners make towing a London Aire® 5th Wheel a breeze. It's specially designed to slip through the air as easily as a bird on a wing. Welded aluminum sidewalls and roofing truss systems rest on a steel chassis with a steel I-beam, providing enough support to make your investment last for the long haul.



The entertainment center, built into a slideout, becomes a brilliant showcase for all your electronic components.



LONDON AIRE

1996 MOTORHOMES

*A*s stately and majestic as historic London, England, the London Aire® Diesel Pusher by Newmar also makes an expressive statement. This most luxurious of motorhomes will pamper you as well as any "5 star" hotel. At the top of Newmar's feature list is the innovative slide-out room. With the push of a button, your room begins a transformation which will nearly double its size. Gliding quietly and quickly, you'll marvel at how the flat floor system meets flush with the adjoining floor as the slideout locks into place. Newmar pioneered this technology and was the first manufacturer to incorporate a slideout in motorhomes. Newmar's unique flat floor is Patent Pending.

Our engineering and design teams didn't stop there. Every component in a London Aire has been given the "Royal Treatment." You can experience for yourself the feeling of being treated like royalty. The wraparound cockpit has been ergonomically designed to maximize comfort. Custom made cabinets, hardwood floors, sofas, recliners and matching window treatments are all color coordinated by our professional decorators. The sliding generator shelf and LP gas hookups have been engineered for easy accessibility and serviceability. Very few options are available on a London Aire® because they have already been included as standard features.





The slideout in this London Aire® motorhome extends both the living room and dining room areas, providing increased floor space and additional comfort in each area. Stepping up into the slideout is a thing of the past; because, with Newmar's flat floor design, the slideout floor recesses, meeting the existing floor to create a flush match.



After a day of touring, as you sit back and relax in this soft, leather recliner, you will understand why Newmar uses only the finest furnishings available.



Newmar's attention to detail and craftsmanship shines through from