

•1997•

London Aire



1997 London Aire® Fifth Wheel

London Aire



1997 London Aire® Diesel Pusher

•1997•
London Aire



1997 London Aire® Fifth Wheel



1997 London Aire® Diesel Pusher

We invite you to visit our new state-of-the-art production facility in Nappanee, Indiana. Plant tours are offered at 10:00 a.m. and 1:00 p.m., Monday-Friday.

Newmar Kountry Klub

Don't forget to check out the Klub—the Newmar Kountry Klub, that is. All you need for eligibility is to be a proud owner of any of the fine Newmar recreational vehicles.

Compliments of:



An American Tradition of Excellence.

355 N DELAWARE ST

London Aire® Diesel Pusher

1997 Optional Features

Air Conditioning & Heating

Auxiliary Heater in Bedroom 20 lbs.

Appliances & Accessories

Basic Sony Satellite Digital Receiver (does not include programming) 37 lbs.
 IceMaker U Line in place of IceMaker in Refrigerator 52 lbs.
 PathMaster Navigation System 8 lbs.
 Remote CD Player with Amplifier 10 lbs.
 Satellite Dish with Auto Lift System (does not include DSS Receiver) 70 lbs.
 Satellite Dish (Winegard) with Manual System (does not include DSS Receiver) 13 lbs.
 Washer/Dryer Compact One Piece 185 lbs.

Cabinets & Furniture

Bed Twins 102 lbs.
 Cabinetry Bleached Oak Hardwood 0 lbs.
 Cabinetry Oak Hardwood 0 lbs.

Cabinets & Furniture (continued)
 Chair Flexsteel High Back Recliner Leather/Vinyl in place of Standard Chair 10 lbs.
 Chair Flexsteel Large Free Standing Recliner in place of Standard 17 lbs.
 Chair Flexsteel Large Free Standing Recliner Leather/Vinyl in place of Standard 27 lbs.

Chassis Features

Optional Chassis-Freightliner 300HP
 Standard Chassis-Spartan Mountain Master 325HP
 Raised Rail

Electrical Features

Generator 7.5 KW Onan (diesel) Quit Series in place of Power Tech

Interior Features

Floor Covering, 12" Ceramic Tile in Bath Area 75 lbs.
 Floor Covering, 12" Ceramic Tile in Kitchen Area 75 lbs.

Plumbing / Bath Features

Corner Shower (4080)

Windows, Awnings, Vents

Awning Slideout Cover 25 lbs.
 Windows Radius Safety Glass Thermopane, Dark Tinted 400 lbs.

London Aire

London Aire® Diesel Pusher Sizes and Capacities

Model	LP 4057	LP 4059	LP 4060	LP 4080
Approx. Overall Length	40'-8"	40'-8"	40'-8"	40'-8"
Overall Width	101"	101"	101"	101"
Approx. Overall Height	11'-8"	11'-8"	11'-8"	11'-8"
Interior Width	93"	93"	93"	93"
Interior Height	78"	78"	78"	78"
Grey Tank	55 Gal.	55 Gal.	55 Gal.	55 Gal.
Sewage Tank	55 Gal.	55 Gal.	55 Gal.	55 Gal.
Water Tank	105 Gal.	105 Gal.	105 Gal.	105 Gal.
L/P Tank	42 Gal.	42 Gal.	42 Gal.	42 Gal.
Furnace BTU	40,000	40,000	40,000	40,000

Lengths, Heights, Widths, Dry Weights and Hitch Weights are approximate.

London Aire® Diesel Pusher Freightliner Chassis Specifications

Model	LP 4057	LP 4059	LP 4060	LP 4080
Chassis	Freightliner V-LINE	Freightliner V-LINE	Freightliner V-LINE	Freightliner V-LINE
Engine	300 H.P.	300 H.P.	300 H.P.	300 H.P.
Axle Ratio	4.63	4.63	4.63	4.63
Fuel Cap	150 Gal.	150 Gal.	150 Gal.	150 Gal.
Wheel Base	276"	276"	276"	276"
Front GAWR	12,000 lbs.	12,000 lbs.	12,000 lbs.	12,000 lbs.
Rear GAWR	19,000 lbs.	19,000 lbs.	19,000 lbs.	19,000 lbs.
GVWR	31,000 lbs.	31,000 lbs.	31,000 lbs.	31,000 lbs.
GCWR	36,000 lbs.	36,000 lbs.	36,000 lbs.	36,000 lbs.

London Aire® Diesel Pusher Spartan Chassis Specifications

Model	LP 4057	LP 4059	LP 4060	LP 4080
Chassis	Spartan M/M	Spartan M/M	Spartan M/M	Spartan M/M
Engine	300 H.P.	300 H.P.	300 H.P.	300 H.P.
Axle Ratio	4.63	4.63	4.63	4.63
Fuel Cap	150 Gal.	150 Gal.	150 Gal.	150 Gal.
Wheel Base	276"	276"	276"	276"
Front GAWR	12,000 lbs.	12,000 lbs.	12,000 lbs.	12,000 lbs.
Rear GAWR	19,000 lbs.	19,000 lbs.	19,000 lbs.	19,000 lbs.
GVWR	31,000 lbs.	31,000 lbs.	31,000 lbs.	31,000 lbs.
GCWR	36,000 lbs.	36,000 lbs.	36,000 lbs.	36,000 lbs.

London Aire® Diesel Pusher

1997 Standard Features

Air Conditioning & Heating

Air Conditioner Central Penguin 13.5M BTU with Heat Strip (2)
Heat In Floor Ducted
LP Gas Tank 42 Gallons
LP Leak Detector

Appliances & Accessories

Cable TV Connection
Carbon Monoxide Detector
CB Radio
Cellular Telephone Antenna
Coffee Maker
Freezer Norcold AC/DC (on slides) in Exterior Storage Compartment
Horn (air)
Microwave Oven Convection 30"
Portable Vacuum
Range Cover Laminated with Matching Countertop Material
Range Recessed Wedgewood 3-Burner Hot Plate
Rear View Monitor System
Refrigerator Dometic 3862 with IceMaker (4059)
Refrigerator Dometic 7732 Side-by-Side with IceMaker (4057, 4060, 4080)
Refrigerator Front Framed Hardwood Raised Panel Safe
Satellite Dish Prep Only (Winegard) with Phone/TV Jack & 110 Volt Recept
Security System
Stereo AM/FM Cassette with Clock (bedroom)
Stereo AM/FM CD Player (in dash)
Telephone Connection with 2 Phone Jacks
TV Antenna with Power Booster & 2 Jacks
TV Color 13" AC (in bedroom)
TV Color 19" (in dash overhead)
TV Jack for Exterior Use on Door Side
VCR Prep with TV Video Switch
VCR with Remote
Washer/Dryer Prep
Water Heater 10 Gallon Gas/Electric, Direct Spark Ignition & Engine Assist

Cabinets & Furniture

Cabinet Doors with Positive Catches & Knife Hinges
Cabinetry Cherry Hardwood with Raised Panel Cathedral Doors
Cedar Paneling on Side Wall of One Wardrobe
Chair Flexsteel High Back Recliner
Corian Countertop in Kitchen with Recessed Sink
Corian Countertops & Lavatory Bowl in Bath
Dinette Table Hidden Leaf with 4 Upholstered Chairs
Drawers with Metal Guides & Side Rollers
Front Seats Flexsteel Leather/Vinyl with Power Lumbar Support
Lifts for Convenient Storage Under Fixed Beds
Molded Silverware Divider Tray
Seat 6-Way Power on Driver & Passenger
Sofa Flexsteel Hide-A-Bed

Chassis Features

Chassis-Spartan Mountain Master 300HP Raised Rail
Air Brakes with Auto Slack Adjuster Front & Rear
Anti-Lock Braking System
Back-up Alarm
Cruise Control
Dash Heater/Air Conditioner High Output
Pac 8 Engine Exhaust Brake
Recessed Fuel Fill with Locking Door (1 each side)
Steering Wheel Tilt & Telescope
Suspension Self Leveling Air Ride
Wheels Polished Aluminum

Electrical Features

Battery Disconnect (coach battery)
Battery, Thermoil (4-6 volt)
Electrical Service 50 AMP with 12 Volt Powered Rewind for Cord
Generator 7.0 KW Power Tech (diesel) on Slides with Automatic Changeover
Inverter/Converter (Heart Freedom 20)
Light Spot with Remote Control
Lighting Fluorescent Recessed in Ceiling & Overhead Cabinets
Lights Daytime Headlight System
Lights Docking
Lights Driving
Lights Exterior Security (2 each side)
Lights in Kitchen Base Cabinet Toe Kick Area & Lamberquins
Lights in Wardrobes with Automatic Switches
Lights Interior Courtesy
Midship Side Turn Signals
Recepts 110 Volt with Ground Fault Interrupter (interior & exterior)
Solar Panel 5 Watt to Charge Chassis Battery
Switch for Emergency Chassis Engine Start

Exterior Features

Convex Exterior Mirrors with Remote Control, Defrost & Turn Signals
Exterior Compartment Doors with 12 Volt Powered Locks
Exterior Front & Rear Gel-Coated Fiberglass End Caps
Exterior Sides Gel-Coated Fiberglass
Exterior Sides Seamless Gel-Coated Fiberglass with Clear Coat Finish
Hitch for Towing Car with Wire Connector
Jacks Hydraulic Leveling with Automatic Control
Mud Flaps (front & rear)
Pull-out Storage Trays in Exterior Compartments
Roof & Radius Top Wrap Gel-Coated Fiberglass
Roof Rack, Handrails & Molded Recessed Steps in Rear Cap
Slideout Large with Patented Flat Floor (see floorplans for availability & layout)
Undercoating

Interior Features

Bedsread Quilted with Matching Shams & Accent Pillow
Ceiling Woven Soft Touch
Decorative Wall Clock & Mirror
Designer Kitchen Area Rug
Floor Covering, Carpet Staintech, 45 oz. 100% Nylon Plush Saxony
Floor Covering, Hardwood Plank in Kitchen Area
Floor Mats at Front Seats
Sink Covers, Two
Smoke Detector & 10 BC Fire Extinguisher
Window Garnish (residential style)
Window Treatment Day/Night Pleated Shades & Shadow Boxes
Window Treatment Mini Blinds (kitchen)

Plumbing / Bath Features

Bath Accessories Brass (1 each towel bar, tissue holder, towel ring & robe hook)
Faucet for Kitchen Sink Single Handle with Pull-out Spout (Moen)
Faucet for Shower & Lavatory Single Handle (Moen)
Monitor Panel
Sewage Holding Tank Rinse
Stool China with Spray Attachment
Tub/Shower Fiberglass with Enclosure
Water Filtering System with Drink Dispenser (kitchen)
Water Hose with Automatic Rewind & City Water Hook-up
Winterize Convenience Package (with water heater bypass)

Construction Features

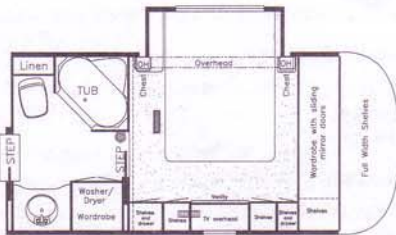
Insulation 1/4" Foam Board Exterior Roof
Insulation Fiberglass R7 Sidewalls & Floor R19 Roof
Insulation Foam 5/8" Laminated in Sidewalls & Ceiling
Structure, Aluminum Sidewalls & Roof
Structure, Contoured Sidewalls
Structure, Widebody

Windows, Awnings, Vents

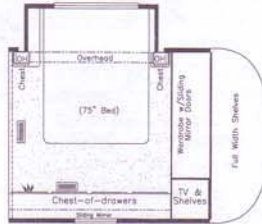
Awning Side A&E 9000
Awning Window A&E 9000 (on bedroom & slideout windows)
Door Bell
Door Driver's Side with Power Window
Entrance Door Stepwell Tread Liner
Exterior Lighted Acrylic Assist Handle (at main entrance door)
Keyless Entry Door
Skylight in Bath with Soft Shade
Step 12 Volt Automatic
Vent 12 Volt Fantastic Vented through Central Air Duct
Vent 12 Volt Fantastic with Rain Sensor in Bath
Windows Radius Safety Glass Dark Tinted

London Aire® Fifth Wheel

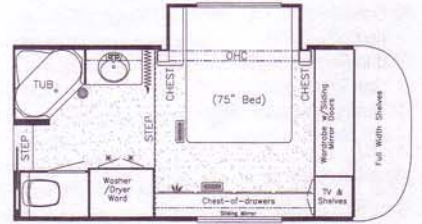
1997 Custom Optional Floorplans



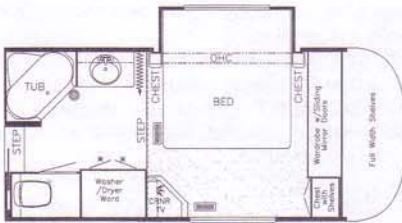
**Option 7K460
Vanity Center**
Available in models:
LA 37 WRKD LA 38 RLDK



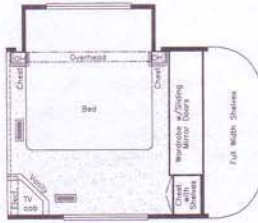
**Option 7K890
Dresser**
Available in models:
LA 37 WRKD LA 38 RLDK



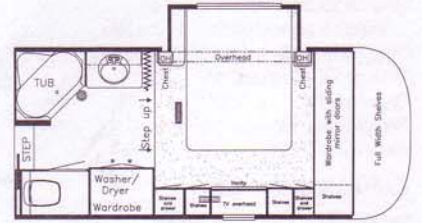
**Option 7K890
Dresser**
Available in model:
LA 40 RKWB



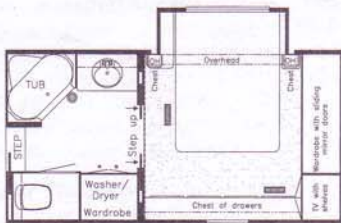
**Option 7K750
King size bed**
Available in model:
LA 40 RKWB



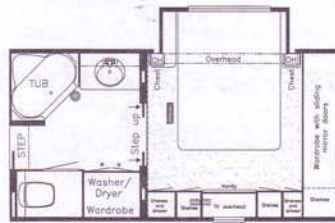
**Option 7K750
King size bed**
Available in models:
LA 37 WRKD LA 38 RLDK



**Option 7K460
Vanity Center**
Available in model:
LA 40 RKWB



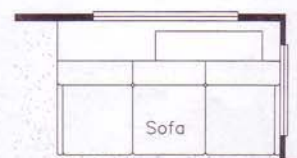
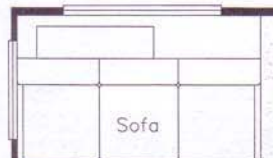
**Option 7K990
Double sliding door**
(used with option 7K890)
Available in model:
LA 40 RKWB



**Option 7K990
Double sliding door**
(used with option 7K460)
Available in model:
LA 40 RKWB



**Option 7K990
Double sliding doors**
Available in model:
LA 40 RKWB



London Aire® Fifth Wheel

1997 Optional Features

Air Conditioning & Heating

- Air Conditioner Brisk Air 15M BTU with Heat Strip (extra)
- Air Conditioner Brisk Air 15M BTU with Heat Strip in place of 13.5M
- Air Conditioner Central Penguin 13.5M BTU with Heat Strip (extra)

Appliances & Accessories

- Basic Sony Satellite Digital Receiver (does not include programming)
- Food Center Blender in Kitchen Countertop
- Icemaker Added to Dometic Refrigerator
- Icemaker U Line
- Safe
- Satellite Dish (Winegard) with Automatic Lift System (does not include DSS Receiver)
- Satellite Dish (Winegard) with Manual System (does not include DSS Receiver)
- Security System
- Surround Sound Home Entertainment System in place of Standard TV & Stereo
- Phone Jack Interior (extra)
- TV Color 13" AC (in bedroom)
- TV Jack (extra)
- Washer/Dryer Prep
- Washer/Dryer Sears

Cabinets & Furniture

- Bed King (72"x80") (not available with vanity or dresser center)
- Built In Dinette with Drawers in place of Free Standing Table/Chairs

Cabinets & Furniture (continued)

- | | | |
|---------------|---|----------|
| Approx Weight | Cabinetry Bleached Oak Hardwood | 0 lbs. |
| | Cabinetry Oak Hardwood | 0 lbs. |
| 100 lbs. | Chair Flexsteel Leather/Vinyl Glider/Recliner in place of Standard | 10 lbs. |
| | Chair Flexsteel Petite Glider/Recliner | 45 lbs. |
| 5 lbs. | Chair Flexsteel Swivel Glider/Recliner (extra) | 60 lbs. |
| 100 lbs. | Desk with Phone Jack & 110 Volt Recept in Slideout (40 RKWB) | 25 lbs. |
| | Desk with Phone Jack & 110 Volt Recept in Slideout (except 40 RKWB) | 25 lbs. |
| 37 lbs. | Dresser Center | 124 lbs. |
| 3 lbs. | French Doors in Bedroom (40 RKWB) | 83 lbs. |
| 5 lbs. | Padded Vanity Stool | 20 lbs. |
| 57 lbs. | Sofa Flexsteel Hide-A-Bed Leather/Vinyl in place of Standard Sofa | |
| 50 lbs. | Flexsteel Magic Bed in place of Standard Sofa Storage Cabinet | |
| 70 lbs. | Vanity Center | |
| 13 lbs. | Chassis Features | |
| 2 lbs. | Granning Air Suspension in place of Standard | 100 lbs. |
| -29 lbs. | Electrical Features | |
| 1 lbs. | Generator 6.5 KW Onan on Slides, Automatic Changeover & Battery | 297 lbs. |
| 24 lbs. | Generator Gas Tank | 5 lbs. |
| 1 lbs. | Generator LP Gas Conversion | 5 lbs. |
| 22 lbs. | Generator Prep (automatic changeover & carbon monoxide detector) | 1 lbs. |
| 232 lbs. | Recept 110 Volt Extra | 1 lbs. |
| | Recept 12 Volt Extra | 1 lbs. |
| 29 lbs. | Solar Prep (12 volt wire from roof to battery compartment) | 1 lbs. |
| 23 lbs. | | |

Exterior Features

- Hitch Plate and Bracket 21000#
- Jacks Stabilizers 12 Volt Power Twins A&E in place of Standard (2 pair) 40 lbs.

Interior Features

- Floor Covering, 12" Ceramic Tile in Bath Area 75 lbs.
- State Seal 0 lbs.

Plumbing / Bath Features

- Heat Pads for Holding Tanks 110 Volt 2 lbs.
- Shower Corner 10 lbs.
- Stool Room Unenclosed -27 lbs.

Windows, Awnings, Vents

- Awning Window A&E 9000 5 lbs.
- Step 12 Volt Automatic 7 lbs.
- Vent 12 Volt Fantastic with Rain Sensor 11 lbs.
- Vent 12 Volt Fantastic with Rain Sensor, Vented through Central Air Duct 11 lbs.
- Window Picture 48"x48" (door side of cabover) (not available with vanity or dresser option) 20 lbs.
- Window Safety Glass Dark Tinted 0 lbs.
- Windows Safety Glass Storms 30 lbs.
- Windows Safety Glass Thermopane Dark Tinted 400 lbs.

• 1997 •

London Aire® Fifth Wheel Floorplans



LA 37 WRKD



LA 40 RKWB



London Aire® Fifth Wheel

1997 Standard Features

Air Conditioning & Heating

Air Conditioner Central Penguin 13.5 BTU with Heat Strip (1)
Heat In Floor Ducted
LP Gas Bottles 2-40# with Automatic Regulator &
See Level Gauges on Slides
LP Leak Detector

Appliances & Accessories

Cable TV Connection
Ceiling Fan
Cellular Telephone Antenna
Microwave Oven Convection 30"
Range Cover Corian, Removable with Convenient Storage
Range Recessed Wedgewood 3-Burner Hot Plate
Refrigerator Dometic 7732 Side-by-Side
Refrigerator Front Framed Hardwood Raised Panel
Satellite Dish Prep Only (Winegard) with Phone/TV
Jack & 110 Volt Recept
Stereo AM/FM Cassette with Clock
Telephone Connection with 1 Phone Jack
TV Antenna with Power Booster & 2 Jacks
TV Color 32"
TV Jack for Exterior Use on Door Side
VCR Prep with TV Video Switch
VCR with Remote
Water Heater 10 Gallon Gas/Electric with Direct Spark Ignition

Cabinets & Furniture

Bed Queen (60"x80") with Luxurious Pillow Top Mattress
Cabinet Doors with Positive Catches & Knife Hinges
Cabinetry Cherry Hardwood with Raised Panel
Cathedral Doors
Cedar Paneling on Side Wall of One Wardrobe
Chair End Table with Beveled Glass Top
Chair Flexsteel Swivel Glider/Recliner
Corian Countertop in Kitchen with Recessed Sink
Corian Countertops & Lavatory Bowl in Bath
Dinette Table with Glass Top & 4 Upholstered Chairs
Drawers with Metal Guides & Side Rollers
Lazy Susan in Kitchen Overhead Cabinet
Lifts for Convenient Storage Under Fixed Beds
Molded Silverware Divider Tray
Pull Out Pantry
Sofa Cocktail Table with Beveled Glass Top
Sofa Flexsteel Residential Non-Sleeper

Chassis Features

Frame Size 16" I-Beam & Fiberglass Wrap
Maximum Storage
Shock Absorbers

Chassis Features (continued)

Skid Bars for Rear Bottom Protection
Spare Tire
Suspension Mor-Ryde with Heavy Duty Shock Absorbers
Wheels Polished Aluminum

Electrical Features

Battery Disconnect Switch
Battery, Thermoil (2-12 volt)
Converter 75 AMP with Charger
Electrical Service 50 AMP with Flexible Cord
Lighting Fluorescent Recessed in Ceiling and
Overhead Cabinets
Lights Exterior Security (2 each side)
Lights in Exterior Storage Compartments
Lights in Wardrobes with Auto Switches
Lights Interior Courtesy
Midship Side Turn Signals
Recepts 110 Volt with Ground Fault Interrupter
(interior & exterior)

Exterior Features

Cover to Conceal Pin Box
Exterior Front & Rear Gel-Coated Fiberglass End Caps
Exterior Front Gooseneck Area One Piece Molded Fiberglass
Exterior Sides Gel-Coated Fiberglass
Exterior Sides Seamless Gel-Coated Fiberglass
with Clear Coat Finish
Exterior Storage in Rear Cap
Jacks Stabilizer (2 pair)
Roof & Radius Top Wrap Gel-Coated Fiberglass
Roof Rack, Handrails & Molded Recessed Steps in Rear Cap
Slideout in Cabover
Slideout Large with Patented Flat Floor
(see floorplans for availability & layout)
Snaps for Fifth Wheel Jacks
Storage Drawer in Front Compartment Area

Interior Features

Bedsprad Quilted with Matching Shams & Accent Pillow
Ceiling Woven Soft Touch
Decorative Border in Kitchen and Bath Area
Designer Kitchen Area Rug
Floor Covering, Carpet Staintech, 45 oz. 100%
Nylon Plush Saxony
Floor Covering, Hardwood Plank in Kitchen
Sink Covers, Two
Smoke Detector & 5 BC Fire Extinguisher
Window Garnish (residential style)
Window Treatment Day/Night Pleated Shades &
Lined Drapes

Plumbing / Bath Features

Bath Accessories Brass (1 each towel bar, tissue
holder, towel ring & robe hook)
Faucet for Kitchen Sink Single Handle with Pull-out
Spout (Moen)
Faucet for Shower & Lavatory Single Handle (Moen)
Monitor Panel
Sewage Holding Tank Rinse
Stool China with Spray Attachment
Tub/Shower Fiberglass with Enclosure
Tub/Shower Wall Light
Water Filtering System with Drink Dispenser (kitchen)
Winterize Convenience Package (with water heater bypass)

Construction Features

Insulation 1/4" Foam Board Exterior Roof
Insulation Fiberglass R7 Sidewalls, R19 Floor & Roof
Insulation Foam 5/8" Laminated in Sidewalls & Ceiling
Rear Bumper with Slide Out Tray
Structure, Aluminum Sidewalls & Roof
Structure, Contoured Sidewalls
Structure, Widebody
Underbelly Enclosed Aluminum with Laminated 5/8" Foam

Windows, Awnings, Vents

Awning Rear Recessed, 12 Volt Powered
Awning Side A&E 9000
Exterior Lighted Acrylic Assist Handle
(at main entrance door)
Skylight in Bathroom with Soft Shade
Step Triple
Vent 12 Volt in Bath Area with Wall Switch
Windows Radius Torque

London Aire® 5th Wheel Specifications

Unit	No. Axles	Axle Cap.	Tire	GAWR	GVWR	Approx. Length	Approx. Height	Approx. Width	Approx. Weight	Approx. Hitch Weight	Fresh Water Cap.	Grey Water Cap.	Sewage Water Cap.	Approx. Hitch Height	Heat Cap.
LA 37 WRKD	3	7,000	235-85 R 16 E	6,000	18,000	38'-2"	11'-11"	101"	13,140	2,365	100 Gal	50 Gal	50 Gal	47"	55,000

•1997.

London Aire



1997 London Aire® Fifth Wheel

Specifications



1997 London Aire® Diesel Pusher

1997.
London Aire



1997 London Aire® Fifth Wheel



1997 London Aire® Diesel Pusher

We invite you to visit our new state-of-the-art production facility in Nappanee, Indiana. Plant tours are offered at 10:00 a.m. and 1:00 p.m., Monday-Friday.

[Newmar Kountry Klub]

Don't forget to check out the Klub—the Newmar Kountry Klub, that is. All you need for eligibility is to be a proud owner of any of the fine Newmar recreational vehicles.

Compliments of:



An American Tradition of Excellence.

355 N DELAWARE ST



1997 London Aire® Diesel Pusher



The cabin design in the London Aire® Diesel Pusher is the result of extensive ergonomics and biomechanical research. The properly belted-in driver can operate every vital control without having to stretch to reach them.

London Aire





The galley of the London Aire® Diesel Pusher features cherry hardwood with raised panel cathedral doors, side-by-side Dometic® refrigerator and a built-in microwave, to name just a few of a long list of standard equipment and appliances.

London Aire



The rich interior is unmistakably London Aire® quality.



The built-in hutch features positive

• 1997 •

Elegant, sophisticated, an engineering masterpiece - the new London Aire® Diesel Pusher is a triumph of innovation by the accomplished Newmar designers, engineers and craftsmen.

London Aire Diesel Pusher

The new London Aire's sleek lines are enhanced by exciting graphics that truly set it apart. Enter the luxurious London Aire and you will find an elegant motorhome complete with appointments that say, "first class". The patented Newmar slideout room will move effortlessly with the push of a button to form a flush, flat floor and nearly double the room size. Newmar pioneered this technology and was the first manufacturer to incorporate the slideout.

For more than three decades, Newmar has offered unexcelled quality and value to families across the country. That is, not only a proven record of leadership, it's also the best assurance that a company will be in business to back up their products in the years to come.

See the new

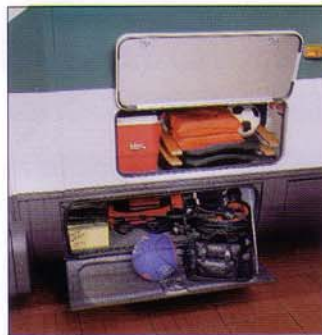
London Aire® Diesel Pusher and discover unexcelled quality and value.



The exclusive Newmar London Aire® slideout room makes for luxurious added living space for your dining and entertaining activities.



1997 London Aire® Fifth Wheel



*Well planned exterior storage
is designed into every
London Aire® Fifth Wheel.*

London Aire



*The bedroom slideout is well planned,
adjacent to the bathroom. Overhead cabinets*



*An optional built-in vanity is part of the large, cherry
wood wardrobe in this beautiful bedroom.*



The kitchen in the London Aire® Fifth Wheel has a long list of convenience features including a Dometic® side-by-side refrigerator/freezer, custom crafted Corian® counter tops, double sink and convection/microwave oven.

London Aire



The rich, cherry hardwood entertainment center houses



When you sit down and relax in the

• 1997 •

Newmar brings you the highest quality, luxury 5th wheel products in the industry, which is even more prevalent in the all new, 1997 lineup. All models are conceived with the notion that recreational vehicle living is its own reward. This conviction lies at the core of Newmar's philosophy.

London Aire® Fifth Wheel

Crafted with quality and confidence, style setting London Aire® Fifth Wheel products are a well established Newmar tradition. The tradition continues with this year's exciting new models.

Virtually no manufacturing method is too complex or too time consuming if its implementation will improve our final product. For example, the seamless front and rear fiberglass caps that create a "unitized body." Additionally, the central air conditioning duct work is built into the aluminum framed truss-roofing system. The floor is made from 3" spruce joists covered with sturdy decking and fully insulated for comfort and sound deadening.

The success of our products is no accident. It is the result of a deliberate ongoing process involving dedicated craftsmen, experienced management and satisfied customers.

It's our American Tradition of Excellence.

