

# AMERICAN STAR

*Old World Craftsmanship  
With A New Contemporary Look.*



*1998 American Star® Travel Trailer*



*1998 American Star® Fifth Wheel*

*By Newmar*

## 1998 TRAVEL TRAILER & Fifth Wheel



# 1998 AMERICAN STAR

## *Travel Trailer & Fifth Wheel*



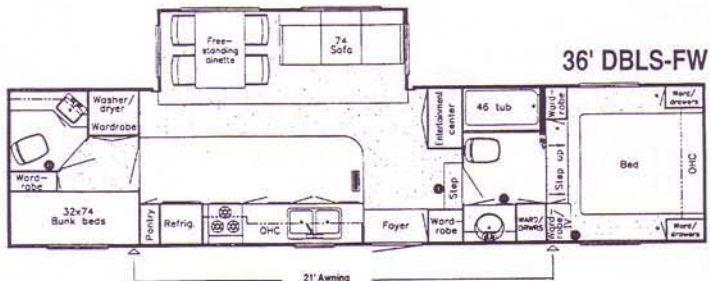
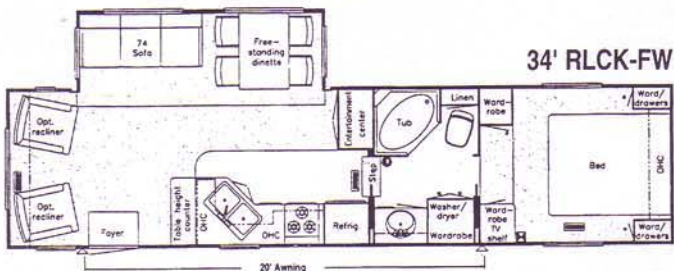
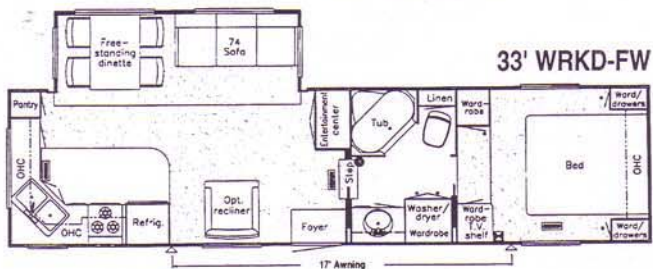
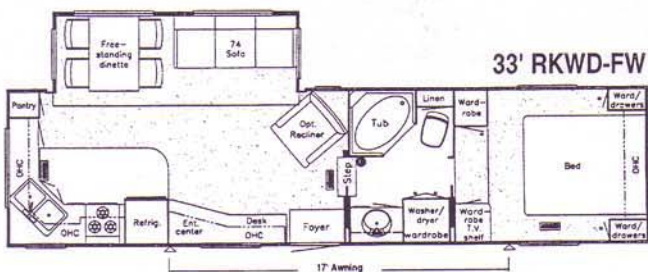
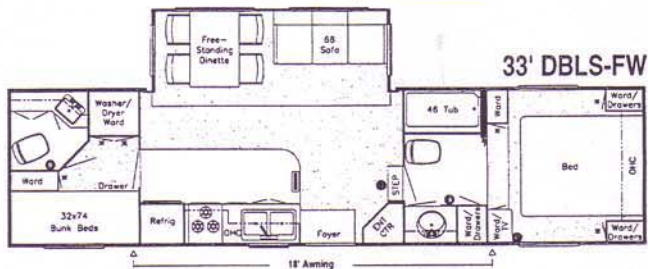
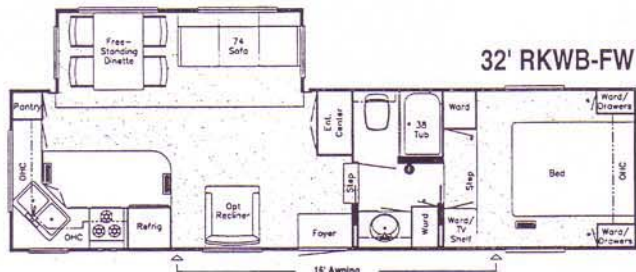
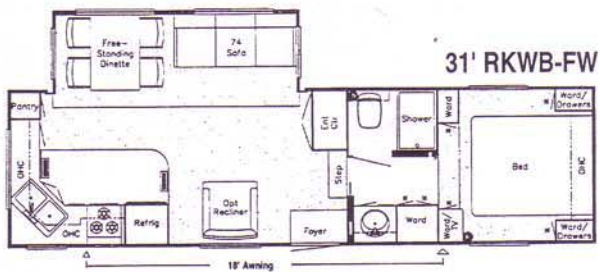
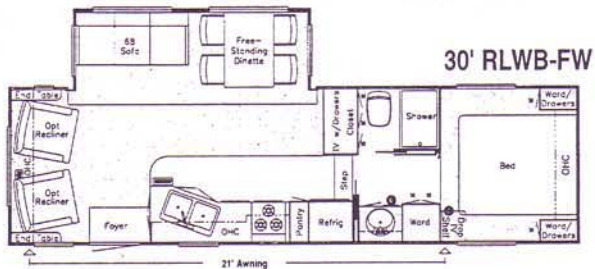
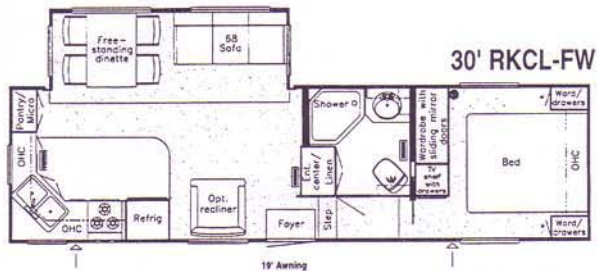
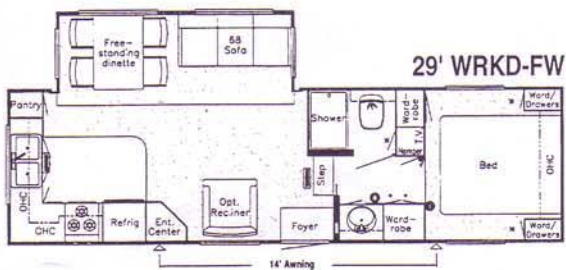
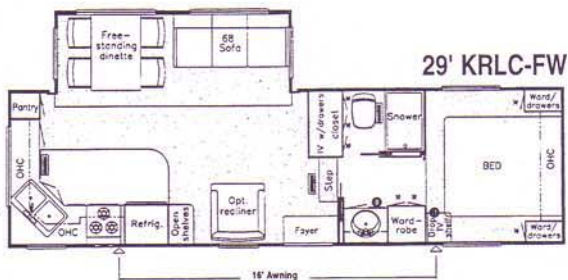
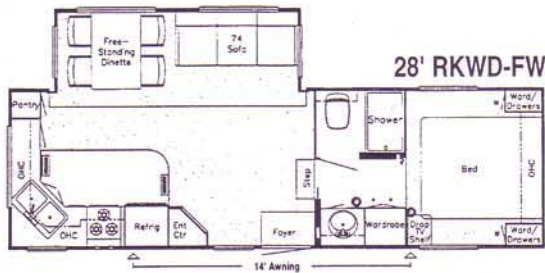
*An American Tradition of Excellence.*

355 N DELAWARE ST • PO BOX 30  
NAPPANEE IN 46550-0030  
(219) 773-7791 • FAX (219) 773-2895

Visit Our Website AT:  
<http://www.newmarcorp.com>

SOME FEATURES SHOWN IN OUR LITERATURE ARE OPTIONAL. COLORS AND FINISHES ARE PHOTOGRAPHIC REPRESENTATIONS AND MAY APPEAR DIFFERENTLY WHEN VIEWING ACTUAL MATERIALS. PLEASE SEE YOUR DEALER FOR ACTUAL SAMPLES AND SPECIFICATIONS.

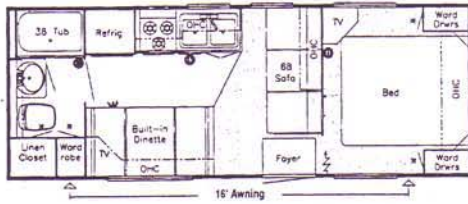
# Fifth Wheels



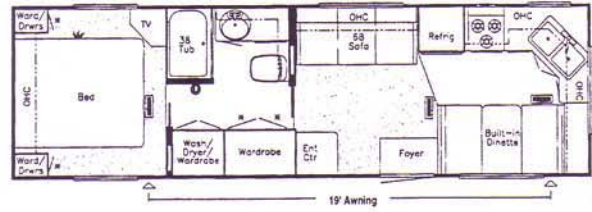


# Travel Trailers

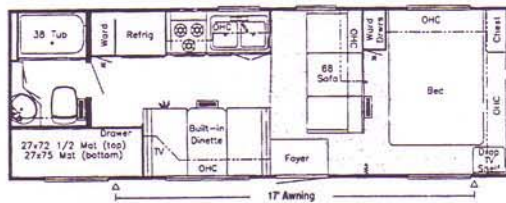
25' RB-TT



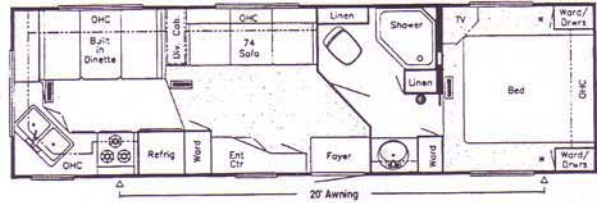
30' FKRB-TT



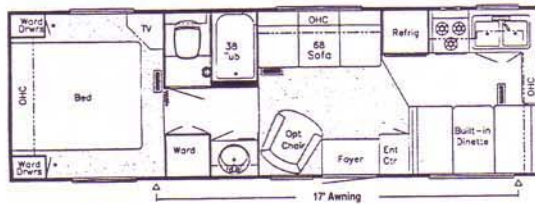
26' DB-TT



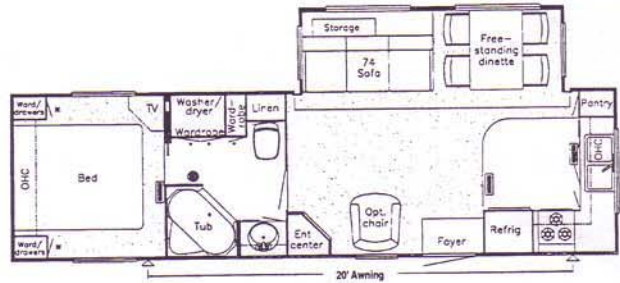
31' RKAB-TT



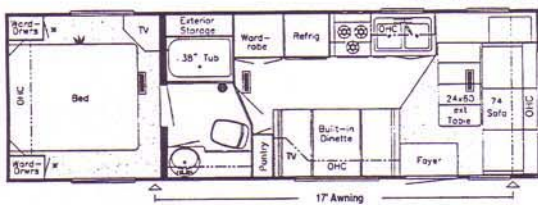
28' FKCB-TT



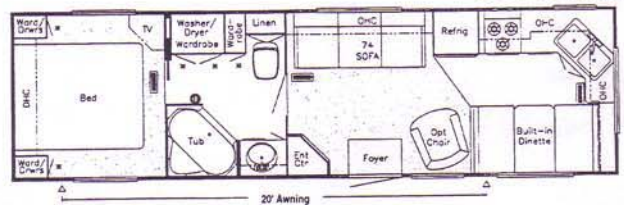
32' CFKS-TT



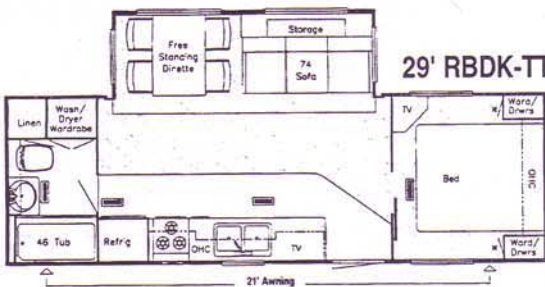
28' WCB-TT



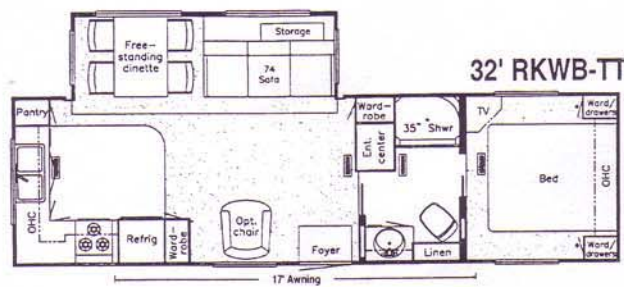
32' FKWB-TT



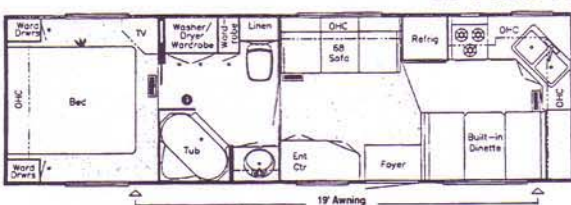
29' RBDK-TT



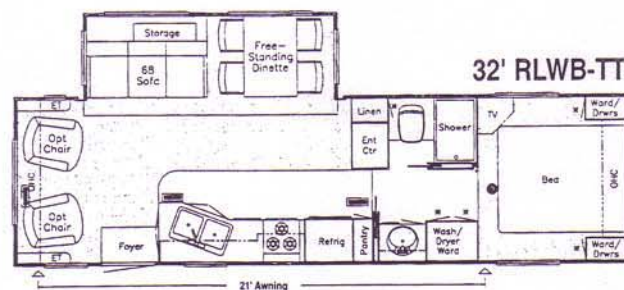
32' RKWB-TT



30' FKLb-TT



32' RLWB-TT





# AMERICAN STAR

*Old World Craftsmanship  
With A New Contemporary Look.*



*1998 American Star Travel Trailer*



*1998 American Star Fifth Wheel*

*By Newmar*

## 1998 TRAVEL TRAILER & FIFTH WHEEL



# 1998 AMERICAN STAR

## *Travel Trailer & Fifth Wheel*



*1998 American Star® Travel Trailer*



*1998 American Star® Fifth Wheel*

### ***[Newmar Kountry Klub]***

DON'T FORGET TO CHECK OUT THE KLUB—THE NEWMAR KOUNTRY KLUB, THAT IS. ALL YOU NEED FOR ELIGIBILITY IS TO BE A PROUD OWNER OF ANY OF THE FINE NEWMAR RECREATIONAL VEHICLES.

Compliments Of:

WE INVITE YOU TO VISIT OUR STATE-OF-THE-ART PRODUCTION FACILITY IN NAPPANEE, INDIANA. PLANT TOURS ARE OFFERED AT 10:00 A.M. AND 1:00 P.M. MONDAY — FRIDAY.



*An American Tradition of Excellence.*

355 N DELAWARE ST • PO BOX 30

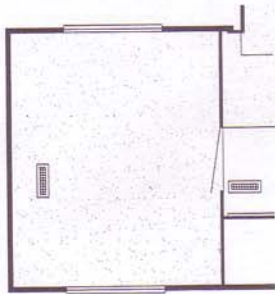
NAPPANEE IN 46550-0030

(219) 773-7791 • FAX (219) 773-2895

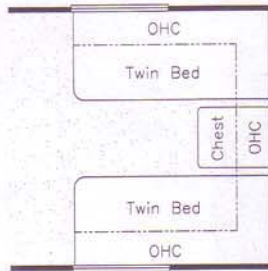
VISIT OUR WEBSITE AT: <http://www.newmarcorp.com>



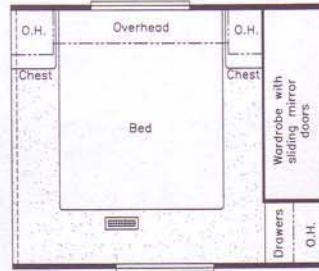
# 1998 AMERICAN STAR® FIFTH WHEEL OPTIONAL FLOORPLANS



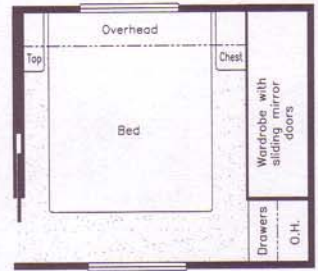
**Option 8K550**  
**Delete rear bedroom**  
**and bath**  
Available in model:  
33DBLS, 36DBLS



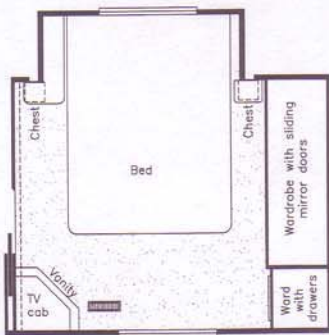
**Option 8K080**  
**75" twin beds**  
Available in model:  
All ASFW without  
Cabover Slideout  
except 30RKCL



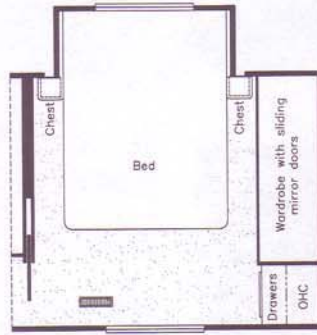
**Option 8K920**  
**Honeymoon suite**  
Available in model:  
32RKWB, 33RKWD,  
33WRKD, 34RLCK



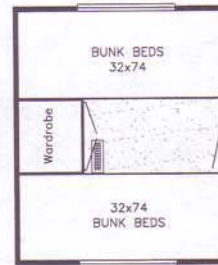
**Option 8K921**  
**Honeymoon suite**  
Available in model:  
30RKCL



**Option 8M440**  
**Cabover S.O. with**  
**75" bed**  
Available in model:  
32RKWB, 33RKWD,  
33WRKD, 34RLCK



**Option 8M710**  
**Cabover S.O. with**  
**75" bed**  
Available in model:  
30RKCL



**Option 8K130**  
**Bunkhouse bedroom**  
Available in model:  
33DBLS, 36DBLS

Prices, specifications and floorplans are subject to change at Newmar's discretion without prior written notice or obligation. Some floorplans may show optional chairs or end tables. See your dealer for availability.



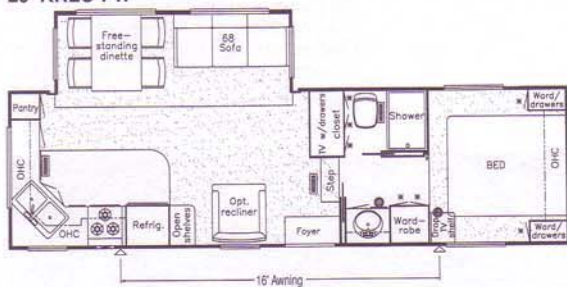


# 1998 AMERICAN STAR® FIFTH WHEEL FLOORPLANS

28' RKWD-FW



29' KRLC-FW



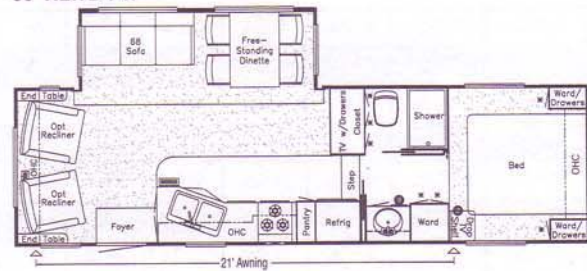
29' WRKD-FW



30' RKCL-FW



30' RLWB-FW



31' RKWB-FW



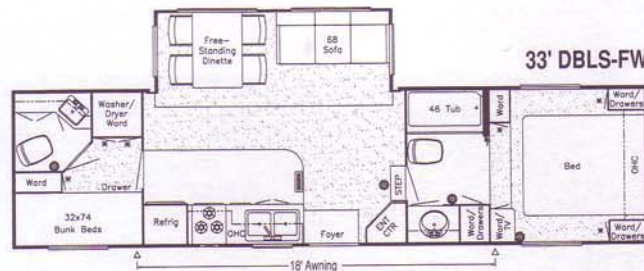
32' RKSA-FW



32' RKWB-FW



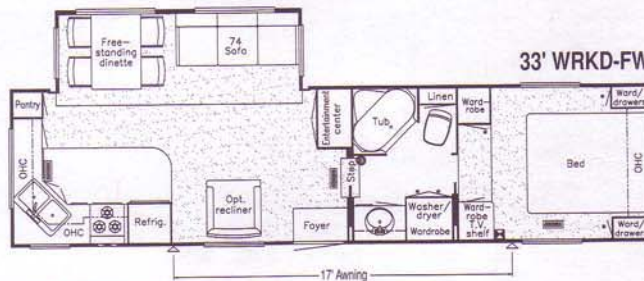
33' DBLS-FW



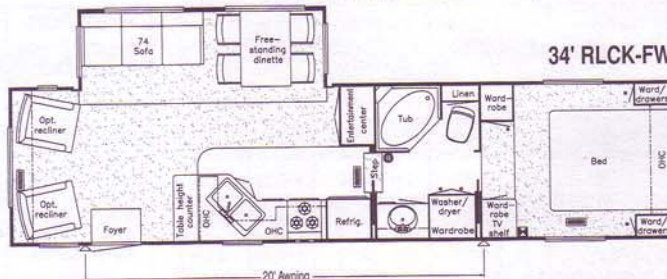
33' RKWD-FW



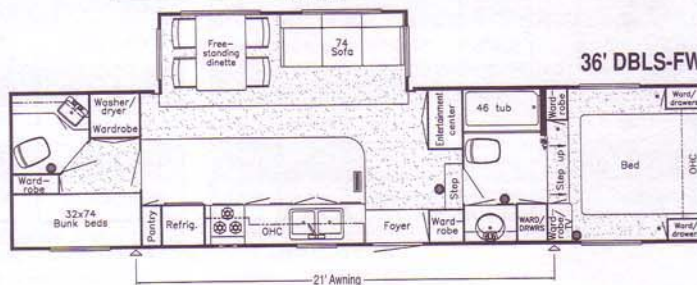
33' WRKD-FW



34' RLCK-FW



36' DBLS-FW





# AMERICAN STAR® FIFTH WHEEL

## 1998 Model Year Standards

### Air Conditioning & Heating

- Air Conditioner Prep (110 volt wiring)
- Heat in Floor Ducted
- LP Gas Bottles 2-30 lbs. w/Automatic Regulator
- LP Leak Detector

### Appliances & Accessories

- Microwave Prep
- Range Cover
- Range Hood w/Light & Fan
- Range Wedgewood 3-Burner w/Oven
- Refrigerator Dometic Double Door 2652.2 (6 cu. ft.)
- Stereo Prep (antenna, speaker wire & 12 volt wire)
- TV Antenna w/Power Booster & 2 Jacks
- Water Heater 6 Gal. Gas/Electric w/Reigniter

### Cabinets & Furniture

- Dinette Table w/Hardwood Top & 4 Chairs (floorplans w/slideout)
- Molded Silverware Divider Tray
- Oak Hardwood Frame Cabinet Doors
- Sofa Flexsteel Jack Knife

### Chassis Features

- Frame Size 12" I-Beam (slideout floorplans)
- Skid Bars for Rear Bottom Protection

### Electrical Features

- Battery, Exide
- Converter 40 AMP w/Charger
- Electrical Power to Power Slideout 110 & 12 Volt
- Electrical Service 30 AMP
- Recepts 110 Volt w/Ground Fault Interrupter (interior & exterior)

### Exterior Features

- Exterior Sides Ribbed Aluminum
- Roof Seamless Aluminum
- Sewer Hose Storage in Bumper
- Slideout Large w/Patented Flat Floor (see floorplans for availability & layout)

### Interior Features

- Bedspread Quilted w/Reversed Sham (1)
- Floor Covering, Carpet w/Pad Living Room & Bedroom
- Floor Covering, Vinyl in Kitchen, Bath & Foyer
- Sink Cover, (1)
- Smoke Detector & 5 BC Fire Extinguisher
- Window Treatment Mini Blinds (throughout)

### Plumbing / Bath Features

- Bath Accessories White (2 towel bars, 1 tissue holder)
- Monitor Panel
- Stool Aqua Magic IV
- Tub/Shower Surround w/Enclosure
- Winterize Convenience Package (w/water heater bypass)

### Construction Features

- Insulation Fiberglass R7 Sidewalls, Floor & Roof
- Underbelly Enclosed & Insulated w/Fiberglass Insulation (slideout floorplans)

### Windows, Awnings & Vents

- Radius Entrance Door w/Deadbolt
- Vent, Power in Bath Area w/Wall Switch
- Windows Radius Torque

### Bedroom Features

- Lifts for Convenient Storage Under Fixed Beds

## 1998 Model Year Options

	Approx. Weight		Approx. Weight		Approx. Weight		Approx. Weight
<b>OPTION PACKAGES</b>		<b>Cabinets &amp; Furniture</b>		<b>Exterior Features</b>		<b>Plumbing / Bath Features</b>	
A8 Preferred Equipment	102 lbs.	• Cabinetry Snow Maple w/Raised Panel Doors (only available w/option C8 XL Interior Preferred Equipment)	0 lbs.	• Exterior Sides Fiberglass	7 lbs.	• Sewage Holding Tank Rinse	1 lbs.
C8 XL Interior Preferred Equipment	61 lbs.	• Chair Flexsteel Petite Glider/Recliner	114 lbs.	• Power Front Jacks	10 lbs.	• Tub/Shower Fiberglass	75 lbs.
M8 XL Exterior Preferred Equipment	290 lbs.	• Chair Flexsteel Swivel Glider/Recliner	121 lbs.	• Roof Rack & Ladder	4 lbs.	<b>Construction Features</b>	
<b>Air Conditioning &amp; Heating</b>		• Sofa Flexsteel Hide-A-Bed in Place of Standard	52 lbs.	• Roof Rubber w/9MM Decking	8 lbs.	• CSA Approval for Canadian Dealers Only	0 lbs.
• Air Conditioner Ducted 13.5M in Place of A 8 Air	52 lbs.	<b>Chassis Features</b>		<b>Interior Features</b>		<b>Windows, Awnings &amp; Vents</b>	
• Air Conditioner Ducted 15M in Place of A 8 Air	52 lbs.	• Shock Absorbers	2 lbs.	• Floor Covering, High Pressure Laminated 15" Tile in Kitchen & Foyer Area	30 lbs.	• Skylight in Bathroom	2 lbs.
<b>Appliances &amp; Accessories</b>		• Spare Tire & Carrier	90 lbs.	• Floor Covering, High Pressure Laminated Simulated Plank in Kitchen & Foyer	30 lbs.	• Vent, Fantastic w/Rain Sensor in Kitchen	11 lbs.
• Ceiling Fan	10 lbs.	• Tires 16" E Range, Set of 4 (except 36 DBLS or w/slideout option)	112 lbs.	• Floor Covering, Vinyl Throughout (not available in cabover area)	20 lbs.		
• Refrigerator Dometic Double Door 2852.2 (8 cu. ft.)	21 lbs.	<b>Electrical Features</b>					
• Washer/Dryer Prep (33 DBLS, WRKD, 36 DBLS)	22 lbs.	• Electrical Service 50 AMP	9 lbs.				
• Water Heater 10 Gal. Gas/Electric w/Reigniter	10 lbs.	• Lights Exterior Security (1 on each side)	2 lbs.				
• Water Heater 6 Gal. Gas/Electric w/Direct Spark Ignition							

### AMERICAN STAR Fifth Wheel INSULATION "R" VALUES

Roof	Sidewalls	Floor
R-9	R-9	R-11

## AMERICAN STAR Fifth Wheel CHASSIS INFORMATION

Unit	No. Axle	Axle Cap.	Tire	GAWR	GVWR
ASFW28RKWD	2	5200 lbs	225-75-R15D	5000 lbs	11500 lbs
ASFW29KRLC	2	5200 lbs	225-75-R15D	5000 lbs	11500 lbs
ASFW29WRKD	2	5200 lbs	225-75-R15D	5000 lbs	11500 lbs
ASFW30RKCL	2	5200 lbs	225-75-R15D	5000 lbs	11500 lbs
ASFW30RLWB	2	5200 lbs	225-75-R15D	5000 lbs	11500 lbs
ASFW31RKWB	2	5200 lbs	225-75-R15D	5000 lbs	11500 lbs
ASFW32RKSA	2	5200 lbs	225-75-R15D	5000 lbs	11500 lbs
ASFW32RKWB	2	5200 lbs	225-75-R15D	5000 lbs	11500 lbs
ASFW33DBLS	2	5200 lbs	225-75-R15D	5000 lbs	11500 lbs
ASFW33RKWD	2	5200 lbs	225-75-R15D	5000 lbs	11500 lbs
ASFW33WRKD	2	5200 lbs	225-75-R15D	5000 lbs	11500 lbs
ASFW34RLCK	2	5200 lbs	225-75-R15D	5000 lbs	11500 lbs
ASFW36DBLS	2	6000 lbs	235-85-R16E	6000 lbs	13000 lbs

Lengths, Heights, Widths, Dry Weights and Hitch Weights are approximate.

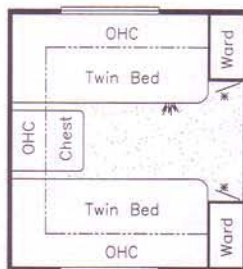
## AMERICAN STAR Fifth Wheel SIZES & CAPACITIES

Unit	Approx. Length	Approx. Height	Approx. Width	Approx. Weight	Approx. Hitch	Fresh Water	Grey Water	Sewage Water	Heating Cap.	Approx. Hitch Height
ASFW28RKWD	28'-8"	11'-10"	96"	7940 lbs	1270 lbs	42 Gal	42 Gal	42 Gal	30000	46"
ASFW29KRLC	29'-8"	11'-10"	96"	8120 lbs	1220 lbs	42 Gal	42 Gal	42 Gal	30000	46"
ASFW29WRKD	29'-8"	11'-10"	96"	8120 lbs	1220 lbs	42 Gal	42 Gal	42 Gal	30000	46"
ASFW30RKCL	31'-5"	11'-10"	96"	8500 lbs	1785 lbs	42 Gal	42 Gal	42 Gal	35000	46"
ASFW30RLWB	30'-2"	11'-10"	96"	8175 lbs	1300 lbs	42 Gal	42 Gal	42 Gal	35000	46"
ASFW31RKWB	31'-3"	11'-10"	96"	8375 lbs	1500 lbs	42 Gal	42 Gal	42 Gal	35000	46"
ASFW32RKSA	33'-4"	11'-10"	96"	8650 lbs	1650 lbs	42 Gal	42 Gal	42 Gal	35000	46"
ASFW32RKWB	32'-10"	11'-10"	96"	8840 lbs	1400 lbs	42 Gal	42 Gal	42 Gal	35000	46"
ASFW33DBLS	33'-6"	11'-10"	96"	9000 lbs	1620 lbs	42 Gal	42 Gal	42 Gal	35000	46"
ASFW33RKWD	33'-9"	11'-10"	96"	8900 lbs	1425 lbs	42 Gal	42 Gal	42 Gal	35000	46"
ASFW33WRKD	33'-8"	11'-10"	96"	9025 lbs	1715 lbs	42 Gal	42 Gal	42 Gal	35000	46"
ASFW34RLCK	35'-4"	11'-10"	96"	9000 lbs	1800 lbs	42 Gal	42 Gal	42 Gal	35000	46"
ASFW36DBLS	36'-6"	11'-10"	96"	9675 lbs	1900 lbs	42 Gal	42 Gal	42 Gal	35000	47"

Lengths, Heights, Widths, Dry Weights and Hitch Weights are approximate.

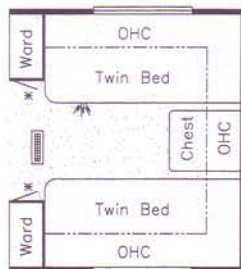


# 1998 AMERICAN STAR® TRAVEL TRAILER OPTIONAL FLOORPLANS



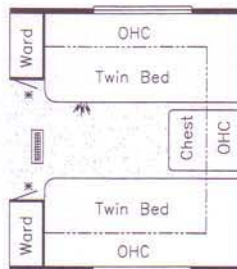
**Option 8K083**  
**75" twin beds**

Available in model:  
28FKCB, 28WCB, 30FKLB,  
30 FKRB, 32 CFKS, 32 FKWB



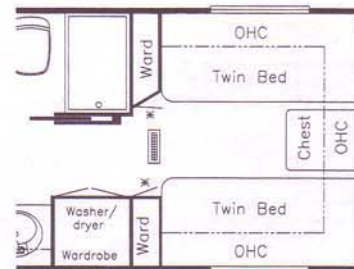
**Option 8K084**  
**75" twin beds**

Available in model:  
29RBDK



**Option 8K085**  
**75" twin beds**

Available in model:  
31RKAB, 32RKWB



**Option 8K086**  
**75" twin beds**

Available in model:  
32RLWB

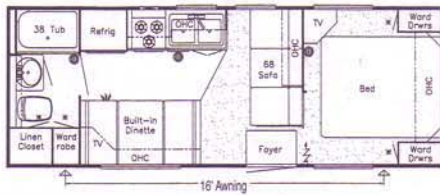


Prices, specifications and floorplans are subject to change at Newmar's discretion without prior written notice or obligation.  
Some floorplans may show optional chairs or end tables. See your dealer for availability.



# 1998 AMERICAN STAR® TRAVEL TRAILER FLOORPLANS

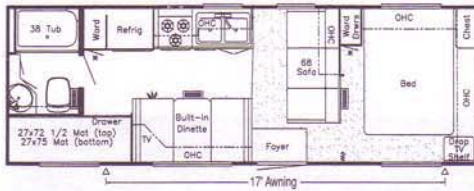
25' RB-TT



30' FKRB-TT



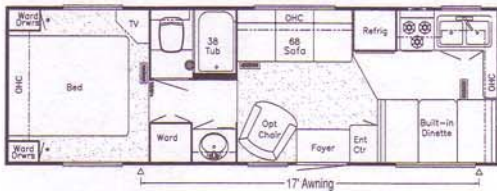
26' DB-TT



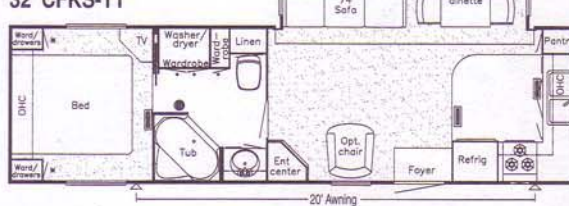
31' RKAB-TT



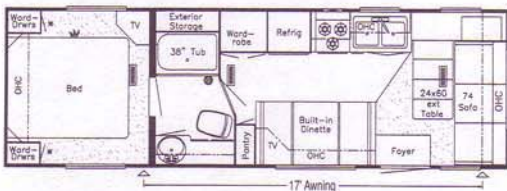
28' FKCB-TT



32' CFKS-TT



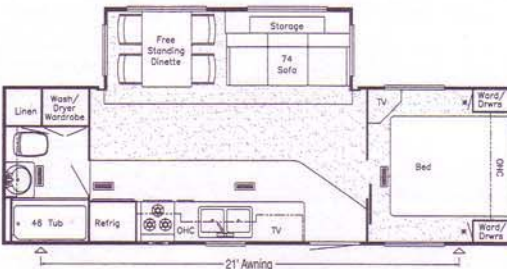
28' WCB-TT



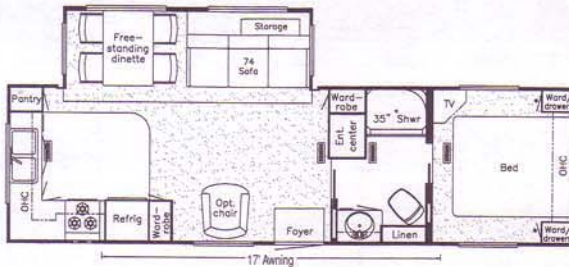
32' FKWB-TT



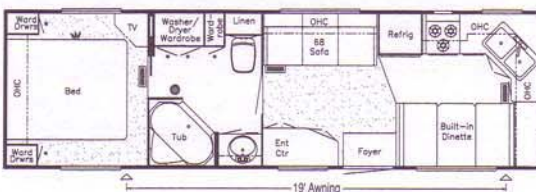
29' RBDK-TT



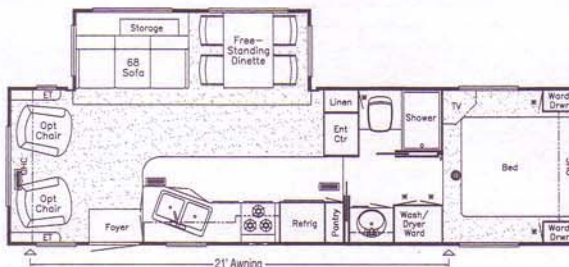
32' RKWB-TT



30' FKLB-TT



32' RLWB-TT



Prices, specifications and floorplans are subject to change at Newmar's discretion without prior written notice or obligation.  
Some floorplans may show optional chairs or end tables. See your dealer for availability.



# AMERICAN STAR® TRAVEL TRAILER

## 1998 Model Year Standards

### Air Conditioning & Heating

- Air Conditioner Prep (110 volt wiring)
- LP ABS Gas Bottle Cover (30 lb. bottles)
- LP Gas Bottles 2-30 lb. w/Automatic Regulator
- LP Leak Detector

### Appliances & Accessories

- Microwave Prep
- Range Cover
- Range Hood w/Light & Fan
- Range Wedgewood 3-Burner w/Oven
- Refrigerator Dometic Double Door 2652.2 (6 cu ft)
- Stereo Prep (antenna, speaker wire & 12 volt wire)
- TV Antenna w/Power Booster & 2 Jacks
- Water Heater 6 Gal. Gas/Electric w/Reigniter

### Cabinets & Furniture

- Dinette Table w/Hardwood Top & 4 Chairs (floorplans w/slideout)
- Molded Silverware Divider Tray
- Oak Hardwood Frame Cabinet Doors
- Sofa Flexsteel Jack Knife

### Chassis Features

- Frame Size 12" I-Beam (slideout floorplans)
- Safety Chains
- Skid Bars for Rear Bottom Protection

### Electrical Features

- Battery, Exide (12 volt)
- Converter 40 AMP w/Charger
- Electrical Power to Power Slideout 110 & 12 Volt
- Electrical Service 30 AMP
- Recept 110 Volt w/Ground Fault Interrupter (interior & exterior)

### Exterior Features

- Exterior Sides Ribbed Aluminum
- Roof 1-Piece Aluminum
- Sewer Hose Storage in Bumper
- Slideout Large w/Patented Flat Floor (see floorplans for availability & layout)

### Interior Features

- Bedspread Quilted w/Reversed Sham (1)
- Floor Covering, Carpet w/Pad Living Room & Bedroom
- Floor Covering, Vinyl in Kitchen, Bath & Foyer
- Sink Cover, 1
- Smoke Detector & 5 BC Fire Extinguisher
- Window Treatment Mini Blinds (throughout)

### Plumbing / Bath Features

- Bath Accessories White (2 towel bars, 1 tissue holder)
- Monitor Panel
- Stool Aqua Magic IV
- Tub/Shower Surround w/Enclosure
- Winterize Convenience Package (w/water heater bypass)

### Construction Features

- Insulation Fiberglass R7 Sidewalls, Floor & Roof
- Underbelly Enclosed & Insulated w/Fiberglass Insulation (slideout floorplans)

### Windows, Awnings & Vents

- Awning, Front (on floorplans where window is standard)
- Radius Entrance Door w/Deadbolt
- Vent 12 Volt in Bath Area w/Wall Switch
- Windows Radius Torque

### Bedroom Features

- Lifts for Convenient Storage Under Fixed Beds

## 1998 Model Year Options

### Option Packages

- A8 Preferred Equipment 102 lbs.
- C8 XL Interior Preferred Equipment 61 lbs.
- M8 XL Exterior Preferred Equipment 290 lbs.

### Air Conditioning & Heating

- Air Conditioner Ducted 13.5M in Place of A8 Air -52 lbs.
- Air Conditioner Ducted 15M in Place of A8 Air -52 lbs.

### Appliances & Accessories

- Refrigerator Dometic Double Door 2852.2 (8 cu. ft.) 21 lbs.
- Washer/Dryer Prep (30 FKRB, 32 CFKS) 22 lbs.
- Water Heater 10 Gal. Gas/Electric w/Reigniter 10 lbs.

### Cabinets & Furniture

- Cabinetry Snow Maple w/Raised Panel Doors (only available w/option C8 XL Interior Preferred Equipment) 0 lbs.
- Chair Flexsteel Petite Glider/Recliner 114 lbs.
- Sofa Flexsteel Hide-A-Bed in Place of Standard (29 RBDK, 32 CFKS RKWB, RLWB) 52 lbs.

### Chassis Features

- Shock Absorbers 2 lbs.
- Spare Tire & Carrier 90 lbs.
- Tires 16" E Range, Set of 4 (29 RBDK, 32 CFKS, RKWB, RLWB) 112 lbs.

### Electrical Features

- Electrical Service 50 AMP 9 lbs.
- Lights Exterior Security (1 on each side) 2 lbs.

### Exterior Features

- Exterior Sides Filon Fiberglass 7 lbs.
- Roof Rack & Ladder 4 lbs.
- Roof Rubber w/9MM Decking 8 lbs.

### Interior Features

- Floor Covering, High Pressure Laminated 15" Tile in Kitchen & Foyer Area 30 lbs.
- Floor Covering, High Pressure Laminated Simulated Plank in Kitchen & Foyer 30 lbs.

### Plumbing / Bath Features

- Sewage Holding Tank Rinse 1 lbs.
- Tub/Shower Fiberglass 75 lbs.

### Construction Features

- CSA Approval for Canadian Dealers Only 0 lbs.

### Windows, Awnings, & Vents

- Skylight in Bathroom 2 lbs.
- Vent 12 Volt Fantastic w/Rain Sensor in Kitchen 11 lbs.

### Option Packages:

#### A8 Preferred Equipment

- Air Conditioner 13.5 BTU Brisk Air
- Converter 75 AMP w/Charger
- Microwave oven 22"
- Side Awning Carefree Fiesta

### Option Packages(Cont.):

#### C8 LX Interior Preferred Equipment

- Bed Queen (60" x 75")
- Cable TV Connection
- Complexion Light In Bathroom w/Wall Switch
- Decorative Wall Clock
- Decorative Wall Lights In Bathroom
- Lavatory Faucet Single Handle
- Oak Hardwood Raised Panel Overhead Cabinet Doors
- Refrigerator Front Hardwood Raised Panel
- Sofa Throw Pillows
- Stereo AM/FM Cassette w/Clock

#### M8 LX Exterior Preferred Equipment

- Awning Rear (on Floorplans w/Rear Window)
- Decorative White Lug Nut Covers
- Bumper Cover Aluminum
- Exterior Gel-Coated Fiberglass End Caps
- Insulated Polar Pak (R11 Fiberglass Roof)
- Stabilizer Jacks (1 Pr FW) (2 Pr TT)

### AMERICAN STAR TRAVEL TRAILER INSULATION "R" VALUES

Roof	Sidewalls	Floor
R-9	R-9	R-11

## AMERICAN STAR TRAVEL TRAILER CHASSIS INFORMATION

Unit	No. Axle	Axle Cap.	Tire	GAWR	GVWR
ASTT25RB	2	3500 lbs	205-75-R15C	3500 lbs	7000 lbs
ASTT26DB	2	3500 lbs	205-75-R15C	3500 lbs	7900 lbs
ASTT28FKCB	2	3500 lbs	205-75-R15C	3500 lbs	7900 lbs
ASTT28WCB	2	3500 lbs	205-75-R15C	3500 lbs	7900 lbs
ASTT29RBDK	2	5200 lbs	225-75-R15D	5000 lbs	11000 lbs
ASTT30FKLB	2	5200 lbs	225-75-R15D	5000 lbs	11000 lbs
ASTT30FKRB	2	5200 lbs	225-75-R15D	5000 lbs	11000 lbs
ASTT31RKAB	2	5200 lbs	225-75-R15D	5000 lbs	11000 lbs
ASTT32CFKS	2	5200 lbs	225-75-R15D	5000 lbs	11000 lbs
ASTT32FKWB	2	5200 lbs	225-75-R15D	5000 lbs	11000 lbs
ASTT32RKWB	2	5200 lbs	225-75-R15D	5000 lbs	11000 lbs
ASTT32RLWB	2	5200 lbs	225-75-R15D	5000 lbs	11000 lbs

Lengths, Heights, Widths, Dry Weights and Hitch Weights are approximate.

## AMERICAN STAR TRAVEL TRAILER SIZES & CAPACITIES

Unit	Approx. Length	Approx. Height	Approx. Width	Approx. Weight	Approx. Hitch	Fresh Water	Grey Water	Sewage Water	Heating Cap.	Approx. Hitch Height
ASTT25RB	25'-11"	10'-5"	96"	4,940 lbs	590 lbs	42 Gal	42 Gal	42 Gal	20,000	21"
ASTT26DB	27'-3"	10'-5"	96"	5,300 lbs	580 lbs	42 Gal	42 Gal	42 Gal	20,000	21"
ASTT28FKCB	28'-9"	10'-5"	96"	5,375 lbs	590 lbs	42 Gal	42 Gal	42 Gal	25,000	21"
ASTT28WCB	29'-4"	10'-5"	96"	5,550 lbs	660 lbs	42 Gal	42 Gal	42 Gal	25,000	21"
ASTT29RBDK	29'-4"	10'-10"	96"	7,375 lbs	810 lbs	42 Gal	42 Gal	42 Gal	30,000	23"
ASTT30FKLB	30'-11"	10'-5"	96"	5,850 lbs	650 lbs	42 Gal	42 Gal	42 Gal	30,000	21"
ASTT30FKRB	30'-11"	10'-5"	96"	5,850 lbs	585 lbs	42 Gal	42 Gal	42 Gal	30,000	21"
ASTT31RKAB	31'-1"	10'-5"	96"	6,000 lbs	600 lbs	42 Gal	42 Gal	42 Gal	30,000	21"
ASTT32CFKS	32'-7"	10'-10"	96"	7,750 lbs	1,000 lbs	42 Gal	42 Gal	42 Gal	30,000	23"
ASTT32FKWB	32'-7"	10'-5"	96"	6,050 lbs	850 lbs	42 Gal	42 Gal	42 Gal	30,000	21"
ASTT32RKWB	32'-7"	10'-10"	96"	6,050 lbs	850 lbs	42 Gal	42 Gal	42 Gal	30,000	23"
ASTT32RLWB	32'-9"	10'-10"	96"	7,800 lbs	800 lbs	42 Gal	42 Gal	42 Gal	30,000	23"

Lengths, Heights, Widths, Dry Weights and Hitch Weights are approximate.



# AMERICAN STAR

*Old World Craftsmanship  
With A New Contemporary Look.*



*1998 American Star® Travel Trailer*



*1998 American Star® Fifth Wheel*

## SPECIFICATIONS

*By Newman*

# 1998 TRAVEL TRAILER & FIFTH WHEEL



# 1998 AMERICAN STAR

## *Travel Trailer & Fifth Wheel*



1998 American Star® Travel Trailer



1998 American Star® Fifth Wheel

### **[Newmar Kountry Klub]**

DON'T FORGET TO CHECK OUT THE KLUB—THE NEWMAR KOUNTRY KLUB, THAT IS. All you need for eligibility is to be a proud owner of any of the fine NEWMAR RECREATIONAL VEHICLES.

WE INVITE YOU TO VISIT OUR STATE-OF-THE-ART production facility in NAPPANEE, INDIANA. PLANT TOURS ARE OFFERED AT 10:00 A.M. AND 1:00 P.M. Monday – Friday.

Compliments Of:



*An American Tradition of Excellence.*

355 N DELAWARE ST • PO BOX 30

NAPPANEE IN 46550-0030

(219) 773-7791 • FAX (219) 773-2895

Visit Our Website AT: <http://www.newmarcorp.com>

SOME FEATURES SHOWN IN OUR LITERATURE ARE OPTIONAL. COLORS AND FINISHES ARE PHOTOGRAPHIC REPRESENTATIONS AND MAY APPEAR DIFFERENTLY WHEN VIEWING ACTUAL MATERIALS. PLEASE SEE YOUR DEALER FOR ACTUAL SAMPLES AND SPECIFICATIONS.

Printed in U.S.A.





*The spacious living/dining room provides plenty of comfort.*

*You'll appreciate the handcrafted desk and cabinetry in our American Star Fifth® Wheel.*



*Sit back and relax in American Star's optional plush recliner.*



*American Star kitchens have handcrafted cabinetry.*



*Matching window treatment enhance the beauty of the American Star bedroom.*

## 1998 AMERICAN STAR Fifth Wheel



*An elegant dinette and sofa fit smartly in our patented flat floor slide-out room. Beautiful, crystal glass wall lights add a special touch.*

*Fine frosted, maple cabinetry surrounds built-in appliances in this popular American Star kitchen.*

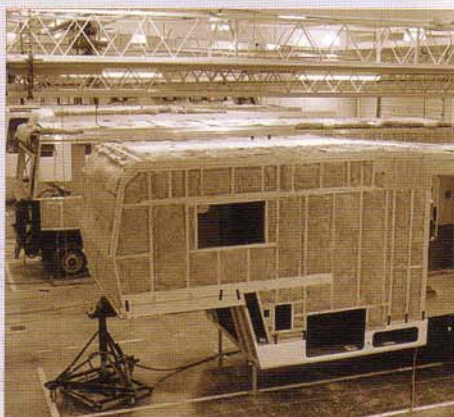




# WHERE NEWMAR'S QUALITY BEGINS



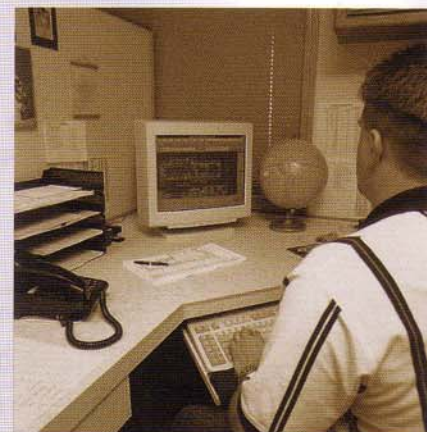
STRONG wooden framing, a key component to structural integrity through years of service, is standard. Featuring 16" ON CENTER framing TO ENSURE STRENGTH AND durability.



A blanket of rolled insulation adds to the efficiency of maintaining a controlled climate by completely wrapping the exterior side-wall, roof system and slideout.



THE cabinet shop is a source of NEWMAR's pride in skilled craftsmanship where each piece is created ON-SITE by CARING HANDS.



NEWMAR ENGINEERS ARE LEADERS in today's industry with their technology advancements. ATTENTION TO detail keeps NEWMAR ON THE CUTTING edge with EVERY NEW MODEL released.





*The patented flat floor slideout is now standard in the American Star®.*



## 1998 AMERICAN STAR TRAVEL TRAILER



*Relaxation time comes easy in your American Star with two optional deep recliners that say comfort, the Newmar way.*

*Beautiful honeyed oak cabinetry is standard with frosted maple cabinetry as an optional choice. (optional frosted maple shown)*



Overall L  
Overall W  
Interior  
Square  
Awning

NEW

Nap

Tr