

TRAVEL TRAILER • FIFTH WHEEL



Newmar® is proud to offer you the finest line of recreational vehicles available. Our tradition of designing and building quality recreational vehicles has long been recognized

along with the fact that our own participation in recreational vehicle living gives us the experience and knowledge to build superior products for our customers.

We appreciate your taking the time to look over our brochure and products at our authorized dealer showrooms. We sincerely hope to earn you as one of our many happy

customers who have learned that Newmar® is An American Tradition of Excellence.

Mahlon Miller
Chairman of the Board

We invite you to visit our state of the art production facility in Nappanee, Indiana.

Plant tours are offered at
10:00 a.m. and 1:00 p.m.,
Monday through Friday.

Newmar Kountry Klub

Don't forget to check out the Klub—the Newmar® Kountry Klub, that is. All you need for eligibility is to be a proud owner of any of the fine Newmar recreational vehicles.



An American Tradition Of Excellence

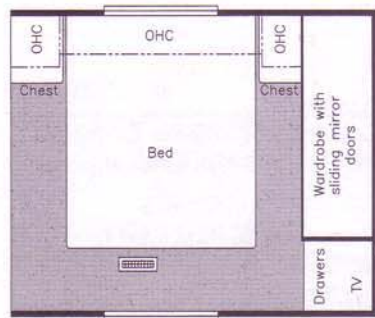
355 N DELAWARE ST • PO BOX 30
NAPPANEE IN 46550-0030
PHONE 219 773-7791 • FAX 219 773-2895
<http://www.newmarcorp.com>



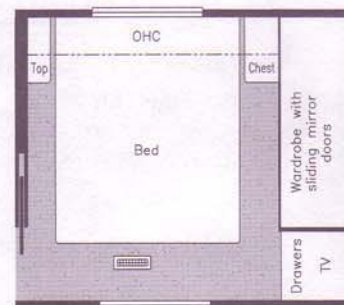
Compliments of:



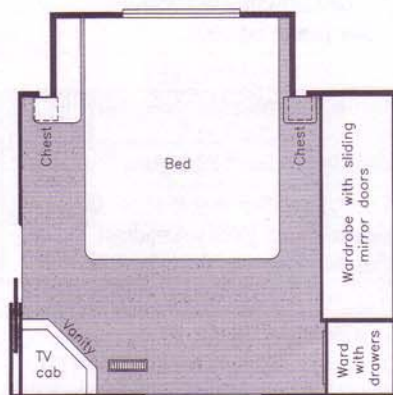
Prices, specifications, and floorplans are subject to change at Newmar's discretion without prior written notice or obligation. Some floorplans may show optional chairs or end tables. See dealer for availability.



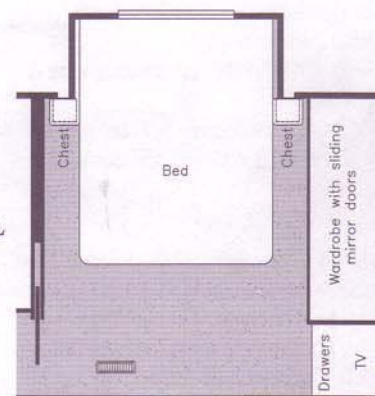
Option K920
Honeymoon suite
Available in:
ASFW 34RKWD,
33WRKD
34RLCK



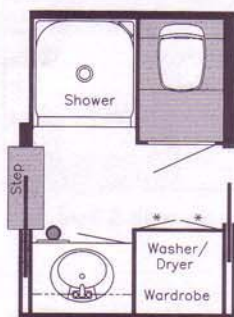
Option K921
Honeymoon suite
Available in:
ASFW 30RKCL



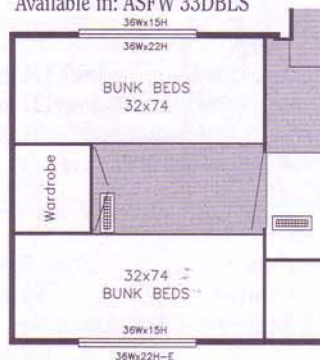
Option M440
Cabover S.O. w/75" bed
Available in:
ASFW 33RKWD,
33WRKD,
34RKCL



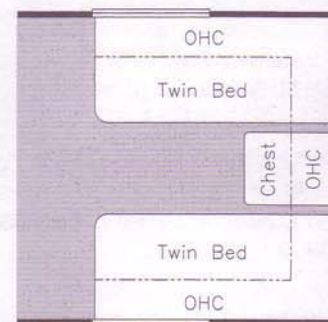
Option M710
Cabover S.O.
w/75" bed
Available in:
ASFW 30RKCL



Option K182
Bunkhouse
bedroom
Available in:
ASFW 33WRKD,
34RKWD, 34RLCK



Option K130
Bunkhouse bedroom
Available in: ASFW 33DBLS



Option K80
75" twin beds
Available in:
All without
cabover
S.O. except
ASFW 30RKCL

AMERICAN STAR® FIFTH WHEEL SPECIFICATIONS

Unit	No. Axles	Axle Cap (lbs.)	Tire	GAWR (lbs.)	GVWR (lbs.)	Length	Height	Width	Weight (lbs.)	Hitch Weight (lbs.)	Fresh Water Cap.	Grey Water Cap.	Sewage Water Cap.	Heating Capacity
ASFW 29 RKWD	2	5200	225-75-R 15D	5000	11500	29'-4"	12'	96"	8105	1376	42 Gal.	42 Gal.	42 Gal.	30,000 btu
ASFW 30 RKCL	2	5200	225-75-R 15D	5000	11500	31'-5"	12'	96"	8682	1728	42 Gal.	42 Gal.	42 Gal.	35,000 btu
ASFW 30 WBRL	2	5200	225-75-R 15D	5000	11500	30'-10"	12'	96"	8500	1360	42 Gal.	42 Gal.	42 Gal.	35,000 btu
ASFW 31 BKWB	2	5200	225-75-R 15D	5000	11500	31'-11"	12'	96"	8584	1288	42 Gal.	42 Gal.	42 Gal.	35,000 btu
ASFW 33 DBLS	2	5200	225-75-R 15D	5000	11500	33'-6"	12'	96"	9151	1647	42 Gal.	42 Gal.	42 Gal.	35,000 btu
ASFW 33 RKSA	2	5200	225-75-R 15D	5000	11500	33'-1"	12'	96"	8837	1590	42 Gal.	42 Gal.	42 Gal.	35,000 btu
ASFW 33 WRKD	2	5200	225-75-R 15D	5000	11500	33'-8"	12'	96"	9161	1649	42 Gal.	42 Gal.	42 Gal.	35,000 btu
ASFW 34 RKWD	2	5200	225-75-R 15D	5000	11500	34'-9"	12'	96"	9305	1647	42 Gal.	42 Gal.	42 Gal.	35,000 btu
ASFW 34 RLCK	2	5200	225-75-R 15D	5000	11500	35'-4"	12'	96"	9348	1496	42 Gal.	42 Gal.	42 Gal.	35,000 btu

Length, Heights, Widths, Dry Weights and Hitch Weights are Approximate. Weight will vary based on optional equipment added to the above base weight.

FIFTH WHEEL OPTIONAL FEATURES

STANDARD FEATURES

AIR CONDITIONING & HEATING

- Air Conditioner Prep (110V wiring)
- Heat In Floor Ducted
- LP Gas Bottles 2-30# w/Automatic Regulator

APPLIANCES & ACCESSORIES

- LP Leak Detector
- Microwave Prep
- Range 3-Burner w/Oven
- Range Cover
- Range Hood w/Light & Fan
- Refrigerator Dometic Americana 2652.2 (6 cu. ft.)
- Stereo Prep (antenna, speaker wire & 12V wire)
- TV Antenna w/Power Booster & 2 Jacks
- Water Heater 6 Gal. Gas/Electric w/Reigniter

CABINETS & FURNITURE

- Dinette Table w/Hardwood Top & Four Chairs (floorplans w/slideout)
- Molded Silverware Divider Tray
- Oak Hardwood Frame Cabinet Doors
- Sofa Flexsteel Jack Knife

CHASSIS FEATURES

- Frame Size 12" I-Beam (slideout floorplans)
- Skid Bars for Rear Bottom Protection

ELECTRICAL FEATURES

- Battery (1-12V)
- Converter 40 AMP w/Charger
- Electrical Power-To-Power Slideout 110 & 12V
- Electrical Service 30 AMP
- Receipts 110V w/Ground Fault Interrupter (interior & exterior)

EXTERIOR FEATURES

- Exterior Front & Rear Gel-Coated Fiberglass End Caps
- Roof Seamless Aluminum
- Sewer Hose Storage in Bumper
- Slideout Large w/Patented Flat Floor (see floorplans for availability & layout)

INTERIOR FEATURES

- Floor Covering—Carpet w/Pad Living Room & Bedroom
- Floor Covering—Vinyl in Kitchen, Bath & Foyer

INTERIOR FEATURES (CONT.)

- Sink Cover—One
- Smoke Detector & 5 BC Fire Extinguisher
- Window Treatment Mini Blinds (throughout)

PLUMBING/BATH FEATURES

- Bath Accessories White (2 towel bars, 1 tissue holder)
- Monitor Panel
- Stool Aqua Magic IV
- Tub/Shower Surround w/Enclosure
- Winterize Convenience Package (w/water heater bypass)

CONSTRUCTION FEATURES

- Insulation Fiberglass R7 Sidewalls, Floor & Roof
- Underbelly Enclosed Fiberglass Insulation

WINDOWS, AWNINGS & VENTS

- Radius Entrance Door w/Deadbolt
- Radius Windows
- Vent—Power in Bath Area w/Wall Switch

BEDROOM FEATURES

- Bedspread Quilted w/Reversed Sham (1)
- Lifts for Convenient Storage Under Fixed Beds

OPTIONAL FEATURES

OPTION PACKAGES

- | | |
|-----------------------------|--------------|
| • A9 Preferred Equipment | WT. 102 lbs. |
| • C9 XL Preferred Equipment | 122 lbs. |

AIR CONDITIONING & HEATING

- | | |
|---------------------------------------------------|----------|
| • Air Conditioner Ducted 13.5M in Place of A9 Air | -52 lbs. |
| • Air Conditioner Ducted 15M in Place of A9 Air | -52 lbs. |

APPLIANCES & ACCESSORIES

- | | |
|----------------------------------------------------------------------------|----------|
| • CD Player—Add on (available only w/Interior Preferred Equipment Pkg. C9) | 5 lbs. |
| • Ceiling Fan (in living area) | 10 lbs. |
| • Refrigerator Dometic Americana 2852.2 (8 cu. ft.) | 21 lbs. |
| • Stereo AM/FM Cassette w/Clock | 3 lbs. |
| • Telephone Connection w/1 Phone Jack | 1 lb. |
| • TV Jack for Exterior Use on Door Side | 1 lb. |
| • TV Jack, Extra | 1 lb. |
| • Washer/Dryer Prep (available on 33 DBLS, WRKD, 34 RKWD, WRKD, 34 RLCK) | 22 lbs. |
| • Washer/Dryer Sears (available on 33 DBLS, WRKD, 34 RKWD, 34 RLCK) | 232 lbs. |
| • Water Heater 10 Gal. Gas/Electric w/Reigniter | 10 lbs. |
| • Water Heater 6 Gal. Gas/Electric w/Direct Spark Ignition | |

CABINETS & FURNITURE

- | | |
|----------------------------------------------------------------------------------------------------------|---------|
| • Built-In Booth Dinette w/Drawers in Place of Free Standing Table & Chairs | 23 lbs. |
| • Cabinetry Snow Maple w/Raised Panel Doors (only available w/option C9 XL Interior Preferred Equipment) | 0 lbs. |

CABINETS & FURNITURE (CONT.)

- | | |
|-------------------------------------------------------|----------|
| • Chair Flexsteel Petite Glider/Recliner | 114 lbs. |
| • Chair Flexsteel Swivel Glider/Recliner | 121 lbs. |
| • Chair Flexsteel Swivel Rocker | 37 lbs. |
| • Sofa Flexsteel Hide-A-Bed in Place of Standard Sofa | 52 lbs. |

CHASSIS FEATURES

- | | |
|------------------------------------------------------------------|----------|
| • Shock Absorbers | 2 lbs. |
| • Spare Tire & Carrier | 90 lbs. |
| • Tires 16" E Range (set of 4) (not available w/slideout option) | 112 lbs. |

ELECTRICAL FEATURES

- | | |
|-----------------------------------------------|---------|
| • Battery 12V (extra) | 42 lbs. |
| • Electrical Service 50 AMP | 9 lbs. |
| • Lights Exterior Security (one on each side) | 2 lbs. |
| • Lights Exterior Security (two on each side) | 4 lbs. |

EXTERIOR FEATURES

- | | |
|----------------------------------------|---------|
| • Exterior Sides Filon Fiberglass | 7 lbs. |
| • Exterior Sides Gel-Coated Fiberglass | 7 lbs. |
| • Power Front Jacks | 10 lbs. |
| • Roof Rack & Ladder | 4 lbs. |
| • Roof Rubber w/9MM Decking | 8 lbs. |

INTERIOR FEATURES

- | | |
|-----------------------------------------------------------------------------|----------|
| • Floor Covering—High Pressure Laminated 15" Tile in Kitchen & Foyer Area | 30 lbs. |
| • Floor Covering—High Pressure Laminated Simulated Plank in Kitchen & Foyer | 30 lbs. |
| • Floor Covering—Vinyl Throughout (not available in cabover) | -20 lbs. |
| • Window Treatment Day/Night Pleated Shades | 5 lbs. |

PLUMBING/BATH FEATURES

- | | |
|--------------------------------------|---------|
| • Assist Handle in Tub/Shower | 2 lbs. |
| • Sewage Holding Tank Rinse | 1 lb. |
| • Shower Exterior (on off door side) | 2 lbs. |
| • Tub/Shower Fiberglass | 75 lbs. |

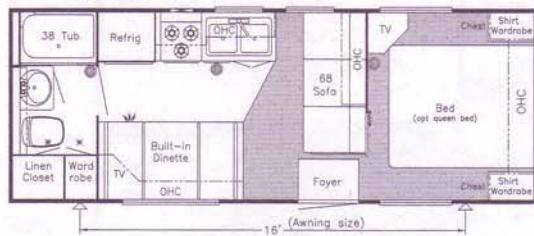
CONSTRUCTION FEATURES

- | | |
|------------------------------------------------------|--|
| • Structure—Aluminum Sidewalls & Roof, 16" on Center | |
|------------------------------------------------------|--|

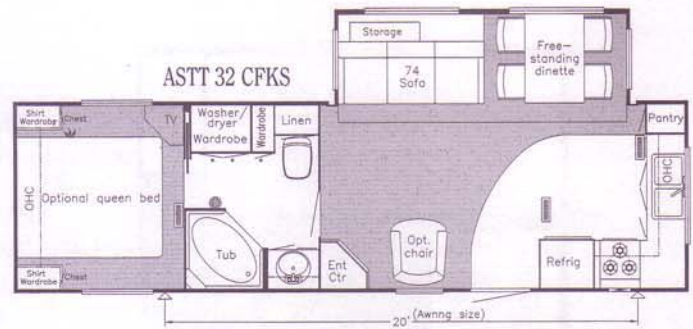
WINDOWS, AWNINGS & VENTS

- | | |
|----------------------------------------------|---------|
| • Awning—Side Tension Rafter (shipped loose) | 5 lbs. |
| • Skylight in Bathroom | 2 lbs. |
| • Vent—Carefree Super Fan in Kitchen | 16 lbs. |

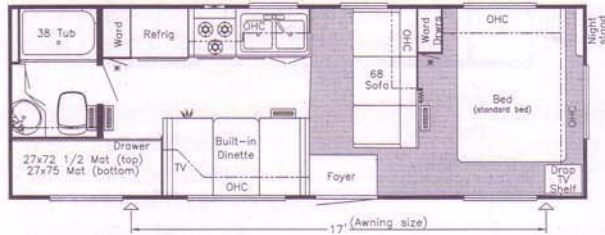
ASTT 25 RB



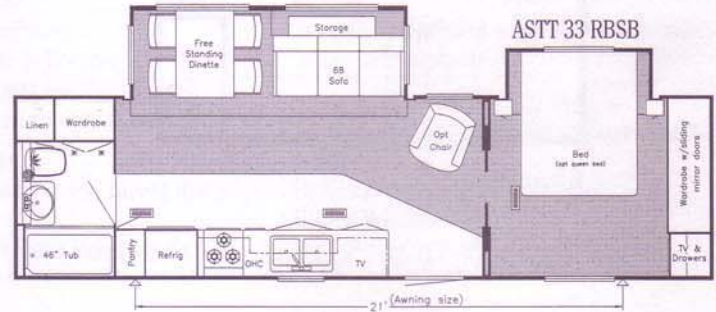
ASTT 32 CFKS



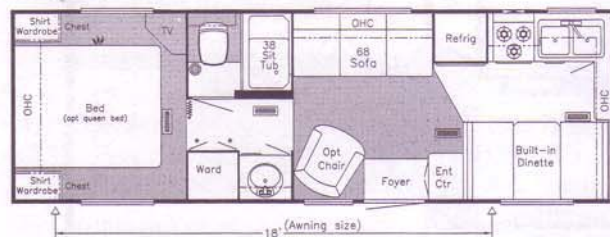
ASTT 26 DB



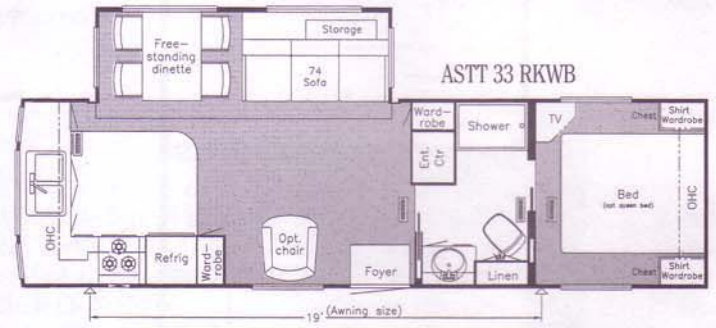
ASTT 33 RBSB



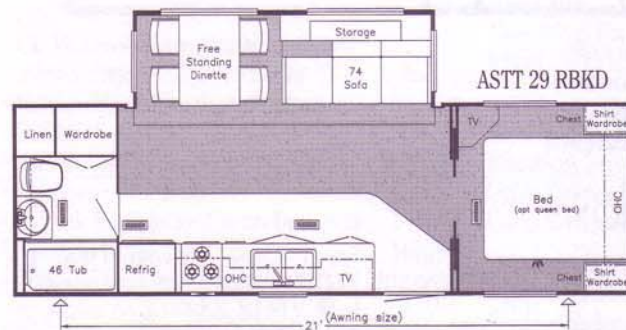
ASTT 28 FKCB



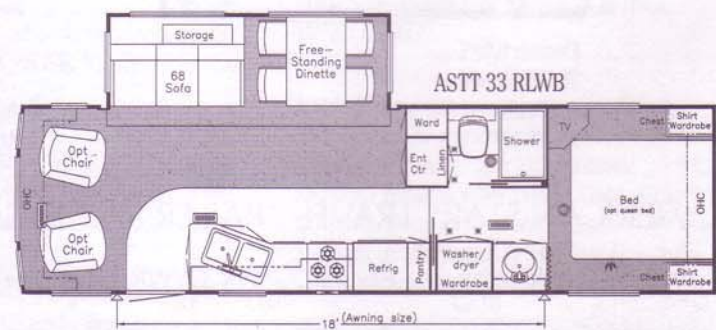
ASTT 33 RKWB



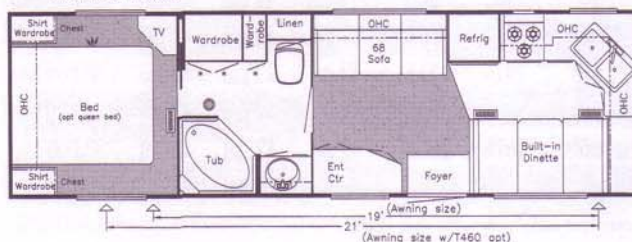
ASTT 29 RBKD



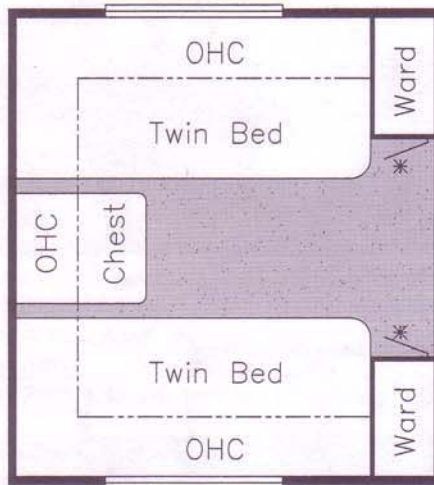
ASTT 33 RLWB



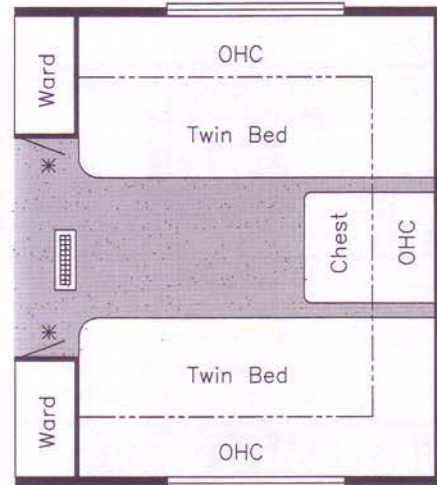
ASTT 30 FKL B



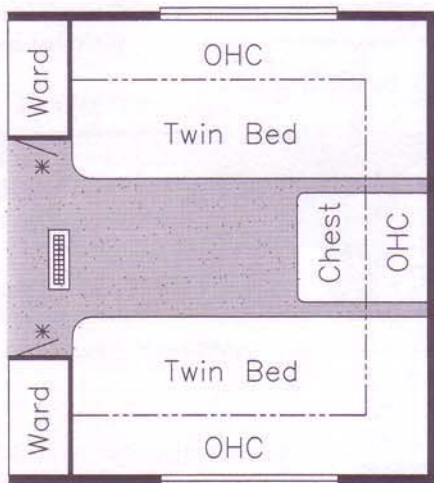
Prices, specifications, and floorplans are subject to change at Newmar's discretion without prior written notice or obligation. Some floorplans may show optional chairs or end tables. See dealer for availability.



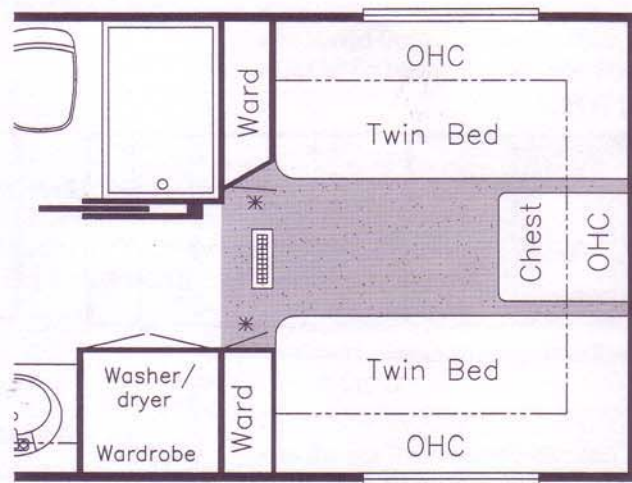
Option K083
75" Twin beds
Available in:
ASTT 28FKCB, 30FKLB, 32CFKS



Option K084
75" Twin beds
Available in:
ASTT 29RBDK



Option K085
75" Twin beds
Available in:
ASTT 32RKWB



Option K086
75" Twin beds
Available in:
ASTT 32RLWB

AMERICAN STAR® TRAVEL TRAILER SPECIFICATIONS

Unit	No. Axles	Axle Cap (lbs.)	Tire	GAWR (lbs.)	GVWR (lbs.)	Length	Height	Width	Weight (lbs.)	Hitch Weight (lbs.)	Fresh Water Cap.	Grey Water Cap.	Sewage Water Cap.	Heating Capacity
ASTT 25 RB	2	3500	205-75-R 15C	3500	7000	25'-11"	10'-4"	96"	4981	547	42 gal	42 gal	42 gal	20,000 btu
ASTT 26 DB	2	3500	205-75-R 15C	3500	7900	27'-9"	10'-4"	96"	5295	582	42 gal	42 gal	42 gal	20,000 btu
ASTT 28 FKCB	2	3500	205-75-R 15C	3500	7900	28'-9"	10'-4"	96"	5275	1033	42 gal	42 gal	42 gal	25,000 btu
ASTT 29 RBDK	2	5200	225-75-R 15D	5000	11000	29'-9"	10'-10"	96"	7455	969	42 gal	42 gal	42 gal	30,000 btu
ASTT 30 FKLB	2	5200	225-75-R 15D	5000	11000	30'-11"	10'-4"	96"	5815	582	42 gal	42 gal	42 gal	30,000 btu
ASTT 32 CFKS	2	5200	225-75-R 15D	5000	11000	32'-7"	10'-10"	96"	7916	1111	42 gal	42 gal	42 gal	30,000 btu
ASTT 33 RBSB	2	5200	225-75-R 15D	5000	11000	33'-9"	10'-10"	96"	8000	840	42 gal	42 gal	42 gal	30,000 btu
ASTT 33 RKWB	2	5200	225-75-R 15D	5000	11000	33'-3"	10'-10"	96"	7878	1003	42 gal	42 gal	42 gal	30,000 btu
ASTT 33 RLWB	2	5200	225-75-R 15D	5000	11000	33'-5"	10'-10"	96"	7936	794	42 gal	42 gal	42 gal	30,000 btu

Length, Heights, Widths, Dry Weights and Hitch Weights are Approximate. Weight will vary based on optional equipment added to the above base weight.

TRAVEL TRAILER OPTIONAL FEATURES

STANDARD FEATURES

AIR CONDITIONING & HEATING

- Air Conditioner Prep (110V wiring)
- LP ABS Gas Bottle Cover (30# bottles)
- LP Gas Bottles 2-30# w/Automatic Regulator

APPLIANCES & ACCESSORIES

- LP Leak Detector
- Microwave Prep
- Range 3-Burner w/Oven
- Range Cover
- Range Hood w/Light & Fan
- Refrigerator Dometic Americana 2652.2 (6 cu. ft.)
- Stereo Prep (antenna, speaker wire & 12V wire)
- TV Antenna w/Power Booster & 2 Jacks
- Water Heater 6 Gal. Gas/Electric w/Reigniter

CABINETS & FURNITURE

- Dinette Table w/Hardwood Top & Four Chairs (floorplans w/slideout)
- Molded Silverware Divider Tray
- Oak Hardwood Frame Cabinet Doors
- Sofa Flexsteel Jack Knife

CHASSIS FEATURES

- Frame Size 12" I-Beam (slideout floorplans)
- Safety Chains
- Skid Bars for Rear Bottom Protection

ELECTRICAL FEATURES

- Battery (1-12V)
- Converter 40 AMP w/Charger
- Electrical Power-To-Power Slideout 110 & 12V
- Electrical Service 30 AMP
- Receipts 110V w/Ground Fault Interrupter (interior & exterior)

EXTERIOR FEATURES

- Exterior Front & Rear Gel-Coated Fiberglass End Caps
- Roof Seamless Aluminum
- Sewer Hose Storage in Bumper
- Slideout Large w/Patented Flat Floor (see floorplans for availability & layout)

INTERIOR FEATURES

- Floor Covering—Carpet w/Pad Living Room & Bedroom
- Floor Covering—Vinyl in Kitchen, Bath & Foyer
- Sink Cover—One
- Smoke Detector & 5 BC Fire Extinguisher
- Window Treatment Mini Blinds (throughout)

PLUMBING/BATH FEATURES

- Bath Accessories White (2 towel bars, 1 tissue holder)
- Monitor Panel
- Stool Aqua Magic IV
- Tub/Shower Surround w/Enclosure
- Winterize Convenience Package (w/water heater bypass)

CONSTRUCTION FEATURES

- Insulation Fiberglass R7 Sidewalls, Floor & Roof
- Underbelly Enclosed w/Fiberglass Insulation (slideout floorplans)

WINDOWS, AWNINGS & VENTS

- Awning—Front (on floorplans where window is standard)
- Radius Entrance Door w/Deadbolt
- Radius Windows
- Vent—Power in Bath Area w/Wall Switch

BEDROOM FEATURES

- Bedspread Quilted w/Reversed Sham (1)
- Lifts for Convenient Storage Under Fixed Beds

OPTIONAL FEATURES

OPTION PACKAGES

- | | WT. |
|-------------------------------------------|----------|
| • A9 Preferred Equipment..... | 102 lbs. |
| • C9 XL Interior Preferred Equipment..... | 122 lbs. |

AIR CONDITIONING & HEATING

- | | |
|--------------------------------------------------------|----------|
| • Air Conditioner Ducted 13.5M in Place of A9 Air..... | -52 lbs. |
| • Air Conditioner Ducted 15M in Place of A9 Air..... | -52 lbs. |

APPLIANCES & ACCESSORIES

- | | |
|------------------------------------------------------------------------------------|----------|
| • CD Player—Add On (available only with Interior Preferred Equipment Pkg. C9)..... | 5 lbs. |
| • Refrigerator Dometic Americana 2852.2 (8 cu. ft.)..... | 21 lbs. |
| • Stereo AM/FM Cassette w/Clock..... | 3 lbs. |
| • Telephone Connection w/1 Phone Jack..... | 1 lb. |
| • TV Jack for Exterior Use on Door Side..... | 1 lb. |
| • TV Jack, Extra..... | 1 lb. |
| • Washer/Dryer Prep (available on 32 CFKS, 33 RLWB)..... | 22 lbs. |
| • Washer/Dryer Sears (available on 32 CFKS, 33 RLWB)..... | 232 lbs. |
| • Water Heater 10 Gal. Gas/Electric w/Reigniter..... | 10 lbs. |
| • Water Heater 6 Gal. Gas/Electric w/Direct Spark Ignition | |

CABINETS & FURNITURE

- | | |
|---------------------------------------------------------------------------------------------------------------|---------|
| • Built-In Booth Dinette w/Drawers in Place of Free Standing Table/Chairs..... | 23 lbs. |
| • Cabinetry Snow Maple w/Raised Panel Doors (only available w/option C9 XL Interior Preferred Equipment)..... | 0 lbs. |

CABINETS & FURNITURE (CONT.)

- | | |
|-----------------------------------------------------------------------------------------------------------|----------|
| • Chair Flexsteel Petite Glider/Recliner..... | 114 lbs. |
| • Chair Flexsteel Swivel Rocker..... | 37 lbs. |
| • Sofa Flexsteel Hide-A-Bed in Place of Standard Sofa (available on 29 RBDK, 32 CFKS, 33 RKWB, RLWB)..... | 52 lbs. |

CHASSIS FEATURES

- | | |
|------------------------------------------------------------------------------------|----------|
| • Shock Absorbers..... | 2 lbs. |
| • Spare Tire..... | 95 lbs. |
| • Tires 16" E Range (set of 4) (available on 29 RBDK, 32 CFKS, 33 RKWB, RLWB)..... | 112 lbs. |

ELECTRICAL FEATURES

- | | |
|----------------------------------------------------|---------|
| • Battery 12V (extra)..... | 42 lbs. |
| • Electrical Service 50 AMP..... | 9 lbs. |
| • Lights Exterior Security (one on each side)..... | 2 lbs. |
| • Lights Exterior Security (two on each side)..... | 4 lbs. |

EXTERIOR FEATURES

- | | |
|---------------------------------------------|---------|
| • Exterior Sides Filon Fiberglass..... | 7 lbs. |
| • Exterior Sides Gel-Coated Fiberglass..... | 7 lbs. |
| • Power Front Hitch..... | 10 lbs. |
| • Roof Rack & Ladder..... | 4 lbs. |
| • Roof Rubber w/9MM Decking..... | 8 lbs. |

INTERIOR FEATURES

- | | |
|----------------------------------------------------------------------------------|---------|
| • Floor Covering—High Pressure Laminated 15" Tile in Kitchen & Foyer Area..... | 30 lbs. |
| • Floor Covering—High Pressure Laminated Simulated Plank in Kitchen & Foyer..... | 30 lbs. |
| • Floor Covering—Vinyl Throughout..... | 20 lbs. |
| • Window Treatment Day/Night Pleated Shades..... | 5 lbs. |

PLUMBING/BATH FEATURES

- | | |
|-------------------------------------------|---------|
| • Assist Handle in Tub/Shower..... | 2 lbs. |
| • Sewage Holding Tank Rinse..... | 1 lb. |
| • Shower Exterior (on off door side)..... | 2 lbs. |
| • Tub/Shower Fiberglass..... | 75 lbs. |

CONSTRUCTION FEATURES

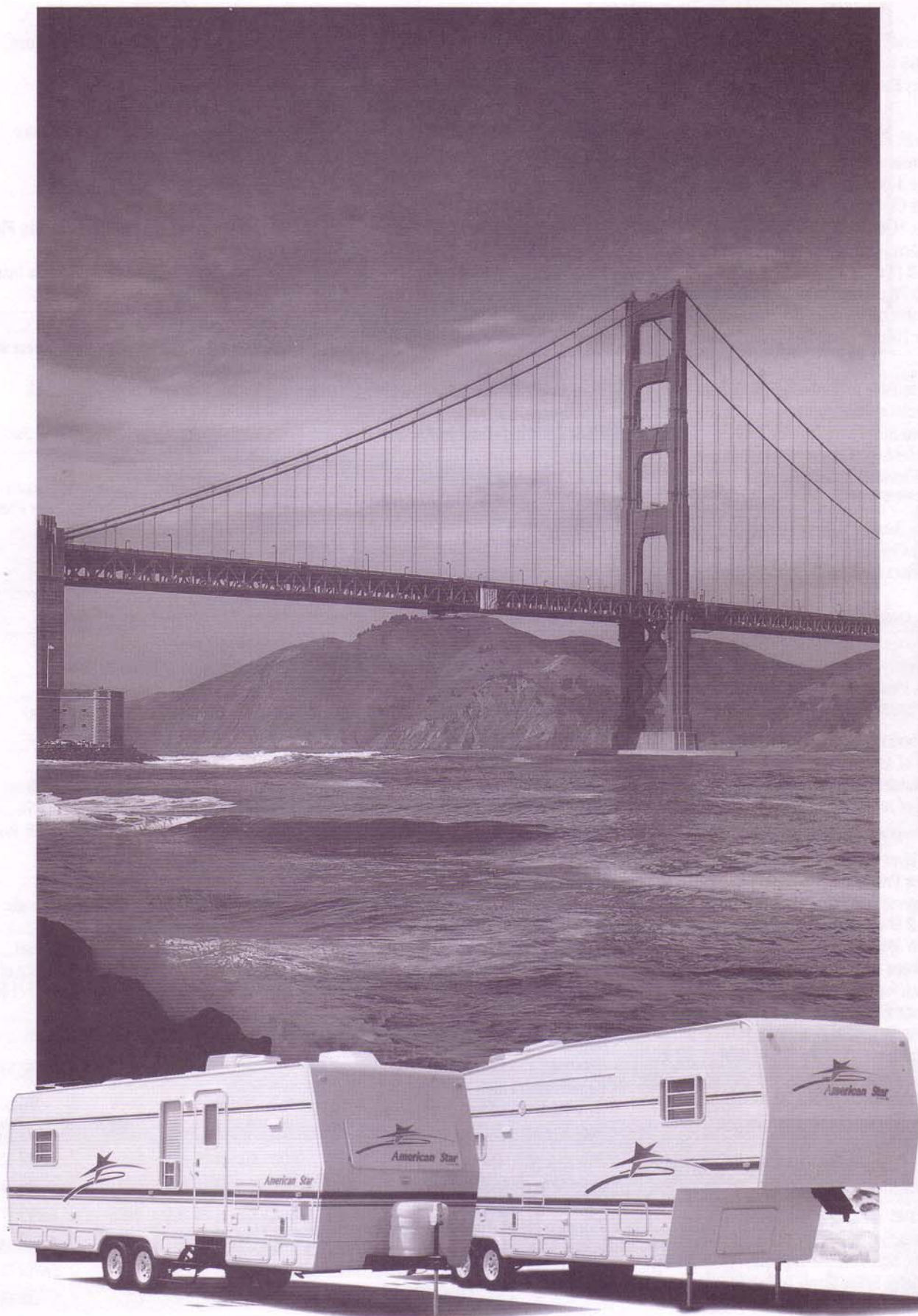
- | | |
|------------------------------------------------------------------------------|---------|
| • Radius Bottom Wrap (not available on 29 RBDK, 32 CFKS, 33 RKWB, RLWB)..... | 15 lbs. |
| • Structure—Aluminum Sidewalls & Roof, 16" on Center | |

WINDOWS, AWNINGS & VENTS

- | | |
|---------------------------------------------------------|----------|
| • Awning—Rear (on floorplans w/single rear window)..... | 9 lbs. |
| • Awning—Side Tension Rafter (shipped loose)..... | 5 lbs. |
| • Bedroom Window w/Awning in Place of Mirror | |
| • Entrance Door in Bedroom..... | 104 lbs. |
| • Skylight in Bathroom..... | 2 lbs. |
| • Vent—Carefree Super Fan in Kitchen..... | 16 lbs. |

TRAVEL TRAILER SPECIFICATIONS

S P E C I F I C A T I O N S



TRAVEL TRAILER • FIFTH WHEEL



Newmar® is proud to offer you the finest line of recreational vehicles available. Our tradition of designing and building quality recreational vehicles has long been recognized

along with the fact that our own participation in recreational vehicle living gives us the experience and knowledge to build superior products for our customers.

We appreciate your taking the time to look over our brochure and products at our authorized dealer showrooms. We sincerely hope to earn you as one of our many happy

customers who have learned that Newmar® is An American Tradition of Excellence.

Mahlon Miller
Chairman of the Board

We invite you to visit our state of the art production facility in Nappanee, Indiana.

Plant tours are offered at
10:00 a.m. and 1:00 p.m.,
Monday through Friday.

NewmarKountryKlub

Don't forget to check out the Klub—the Newmar Kountry Klub, that is. All you need for eligibility is to be a proud owner of any of the fine Newmar recreational vehicles.



An American Tradition Of Excellence

355 N DELAWARE ST • PO BOX 30

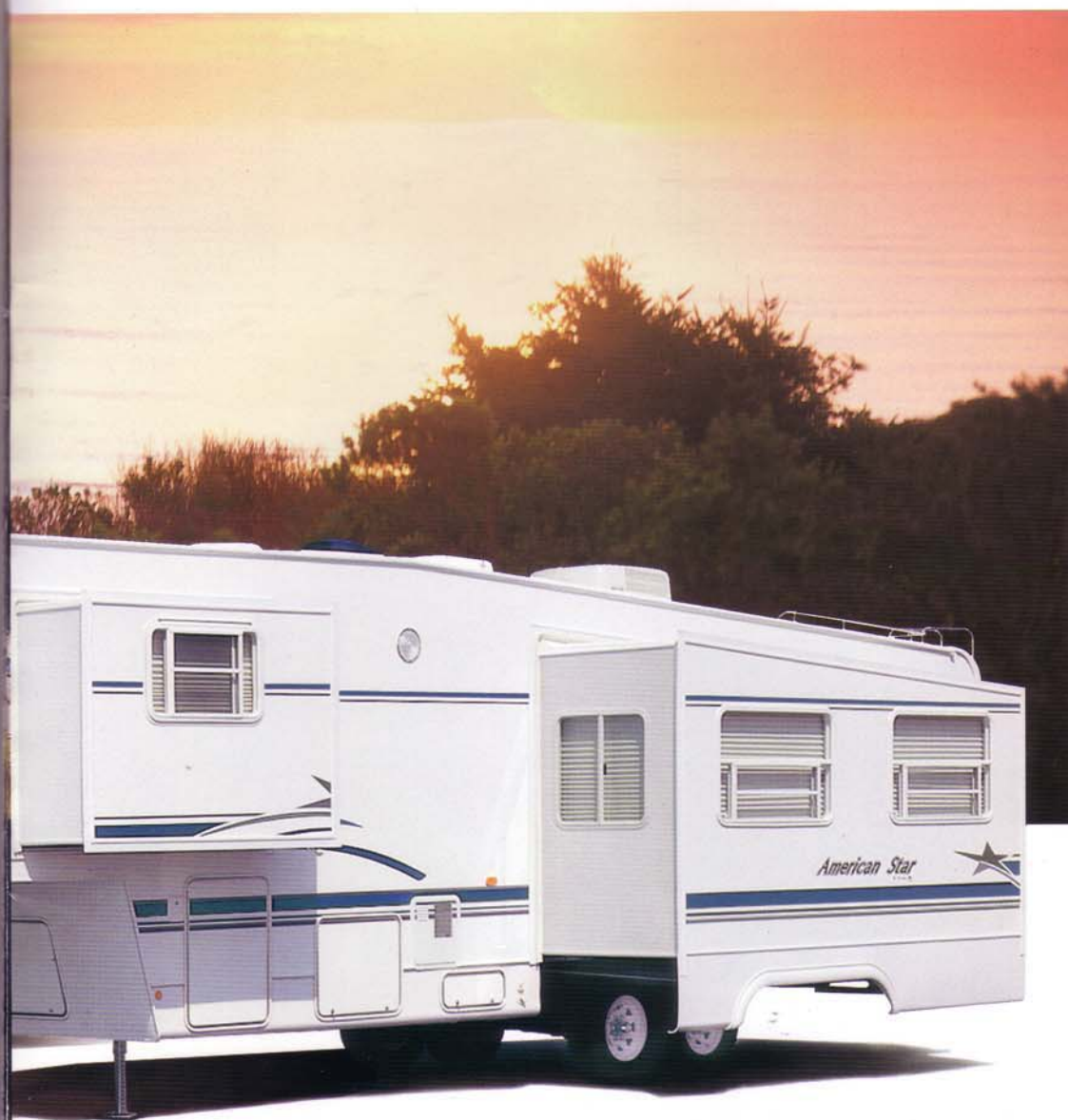
NAPPANEE IN 46550-0030

PHONE 219 773-7791 • FAX 219 773-2895

<http://www.newmarcorp.com>



Compliments of:



A solid focus on excellence guides every decision at Newmar, a major force in the recreational vehicle marketplace for over 31 years. From top management to the newest employee,

the goal is well understood—this Newmar is going to be owned by a real person who deserves the best that we can produce. That is what we promise and that is what we deliver.

NEWMAR PRIDE SHOWS IN EVERY CABINET WE BUILD

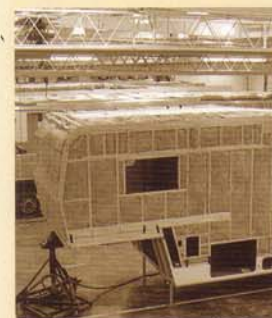


Our cabinet shop is a true source of Newmar's pride in skilled craftsmanship where each piece is created, on-site, by caring hands.

STRENGTH AND DURABILITY



Strong wooden framing, a big component to structural integrity through years of service, is standard. Featuring 16" on center framing to ensure strength and durability.



A blanket of rolled insulation adds to the efficiency of maintaining a controlled climate by completely wrapping the exterior sidewall roof system and slideout.

NEWMAR SLIDEOUT A TRAVELING SUCCESS



There are a lot of slideout rooms, but there is just one Newmar®. It's a Newmar® exclusive. We pioneered it in 1990 and we perfected it. To prove it, we urge you to visit your Newmar® dealer. He will show you the Newmar® difference.



You will see the room glide to its full extension. Instead of stopping—the entire room quietly lowers to the same level matching the main floor...FLAT, FLUSH and FIRM. That's why it's patented.



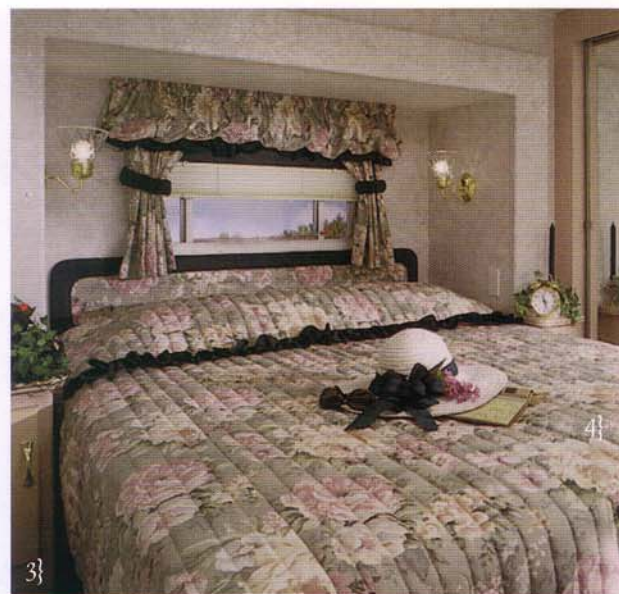
WE USE TECHNOLOGY TO THE FULLEST



Newmar engineers are specially trained on the latest CAD systems to continually provide new and innovative approaches to their designs.

Newmar's image and reputation as the very best among recreational vehicles is the direct result of aiming for perfection. While much of today's emphasis seems to be placed on cutting corners,

Newmar® continues to insist on first class quality and long term dependability. For Newmar® owners, this translates into more pleasure and personal satisfaction.



UN IN A FIFTH WHEEL!



1} The large, flat floor slideout provides plenty of additional room to the living room and dining area. Our new optional day/night shades add an excellent touch to this beautiful room. 2} Snow Maple cabinetry sets an elegant tone in this well-planned kitchen. The microwave has been lowered to

provide easy access. 3} The walk-around, queen size bed features matching bed spread, pillow and window treatments. 4} The flat floor slideout from Newmar is so exclusive its patented. You can nearly double the size of your room with this great American Star® feature. 5} Relax in American Star® style with

our comfortable swivel recliners. 6} Prepare a feast or a snack in this beautifully designed kitchen equipped with all the latest built-in appliances. 7} Matching bedspread and window treatments blend nicely in the master bedroom. 8} Rich Oak with etched double mirrored doors houses an optional 27" T.V. and remote VCR.





YOU'LL ENJOY FAMILY F



For over 31 years, Newmar® has been committed to building superior recreational vehicles with an emphasis on quality at a fair price. For 1999, the American Star® continues the Newmar tradition

with nine fifth wheel models from 29' up to 36' in length. Select from two popular woodgrains—Light Honeyed Oak and Snow Maple that blend beautifully with our three new interiors.

Feature for feature, dollar for dollar, the American Star® from Newmar is America's choice for family

fun in a fifth wheel. Check out the great line-up at your local dealer soon.





1} The American Star® features the patented flat floor slide-out as standard equipment. Make a special note of

the easy to maintain trackless nylon carpet. 2} Elegant, handcrafted cabinetry is available in Light Honeyed Oak or snow Maple.

3} Finely crafted cabinets enhance the charm of the mas-

ter bedroom. 4} Sit back and relax in your comfortable swivel recliner. The entertainment center was built to accept a big 27" TV.

NEVER BEEN THIS GOOD!





HOME ON THE ROAD HAS



American Star's tremendous popularity over the years has never been a mystery. It's an excellent choice of travel trailers that offer great value for the

money. You can choose from nine American Star® travel trailers in lengths from 25' up to 33'. The American Star® sports all new exterior graphics and three upgraded interiors for 1999.

But regardless of the model, you'll be getting Newmar® quality in a most popular price range.

