



1999 TRAVEL TRAILER



1999 FIFTH WHEEL



1999 CLASS A MOTORHOME





1999 TRAVEL TRAILER

1999 5TH WHEEL

1999 CLASS A MOTORHOME

Newmar® is proud to offer you the finest line of recreational vehicles available. Our tradition of designing and building quality recreational vehicles has long been recog-

nized along with the fact that our own participation in recreational vehicle living gives us the experience and knowledge to build superior products for our customers.

We appreciate your taking the time to look over our brochure and products at our authorized dealer showrooms. We sincerely hope you will become one of

our many happy customers who have learned that Newmar® is An American Tradition of Excellence.

Mahlon Miller
Chairman of the Board

We invite you to visit our state of the art production facility in Nappanee, Indiana.

Plant tours are offered at
10:00 a.m. and 1:00 p.m.,
Monday through Friday.

Newmar Kountry Klub

Don't forget to check out the Klub—the Newmar® Kountry Klub, that is. All you need for eligibility is to be a proud owner of any of the fine Newmar® recreational vehicles.



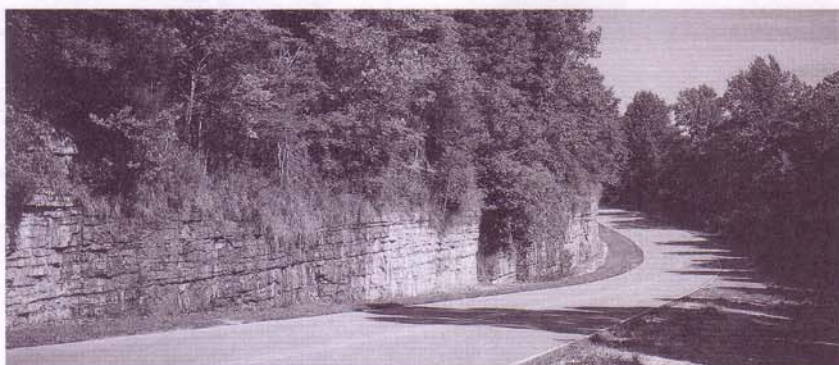
An American Tradition Of Excellence

355 N DELAWARE ST • PO BOX 30

NAPPANEE IN 46550-0030

PHONE 219 773-7791 • FAX 219 773-2895

<http://www.newmarcorp.com>



Compliments of:

KOUNTRY STAR® CLASS A FREIGHTLINER CHASSIS SPECIFICATIONS

Model	SA2708	SA2956	SA3357	SA3758	SA3762	SA3767	SA3780
Chassis	FreightLiner	FreightLiner	FreightLiner	FreightLiner	FreightLiner	FreightLiner	FreightLiner
Engine	210	210	210	210	210	210	210
Axle Ratio	3.31	3.31	3.31	3.31	3.31	3.31	3.31
Fuel Cap.	90 Gal.	90 Gal.	90 Gal.	90 Gal.	90 Gal.	90 Gal.	90 Gal.
Wheel Base	172"	178"	200"	228"	228"	228"	228"
Front GAWR (lbs)	7,000	7,000	7,000	7,000	7,000	7,000	7,000
Rear GAWR (lbs)	13,500	13,500	13,500	13,500	13,500	13,500	13,500
GVWR (lbs)	20,500	20,500	20,500	20,500	20,500	20,500	20,500
GCWR (lbs)	25,500	25,500	25,500	25,500	25,500	25,500	25,500
Approx. Unloaded Vehicle Wt. (lbs)	13,990	15,400	17,250	17,520	17,500	17,660	17,470
Approx. Net Carrying Capacity (lbs)	6,510	5,100	3,250	2,980	3,000	2,840	3,030

KOUNTRY STAR® CLASS A FORD CHASSIS SPECIFICATIONS

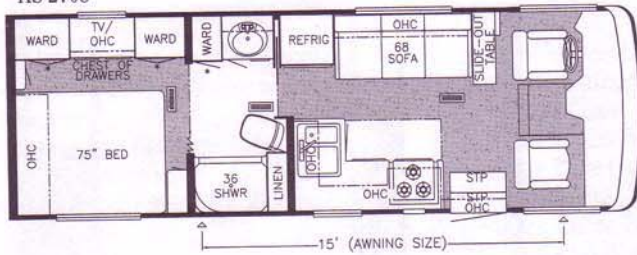
Model	SA2708	SA2956	SA3357	SA3758	SA3762	SA3767	SA3780
Chassis	FORD	FORD	FORD	FORD	FORD	FORD	FORD
Engine	6.8L V10 275 HP	6.8L V10 275 HP	6.8L V10 275 HP	6.8L V10 275 HP	6.8L V10 275 HP	6.8L V10 275 HP	6.8L V10 275 HP
Axle Ratio	5.38	5.38	5.38	5.38	5.38	5.38	5.38
Fuel Cap. (lbs)	75	75	75	75	75	75	75
Wheel Base	172"	178"	200"	240"	240"	240"	240"
Front GAWR (lbs)	7,000	7,000	7,000	7,000	7,000	7,000	7,000
Rear GAWR (lbs)	11,000	11,000	13,500	13,500	13,500	13,500	13,500
GVWR (lbs)	18,000	18,000	20,500	20,500	20,500	20,500	20,500
GCWR (lbs)	26,000	26,000	26,000	26,000	26,000	26,000	26,000
Approx. Unloaded Vehicle Wt. (lbs)	13,440	14,850	16,700	16,920	16,950	17,110	16,920
Approx. Net Carrying Capacity (Gal)	4,560	3,150	3,800	3,580	3,550	3,390	3,580

KOUNTRY STAR® CLASS A CHEVY CHASSIS SPECIFICATIONS

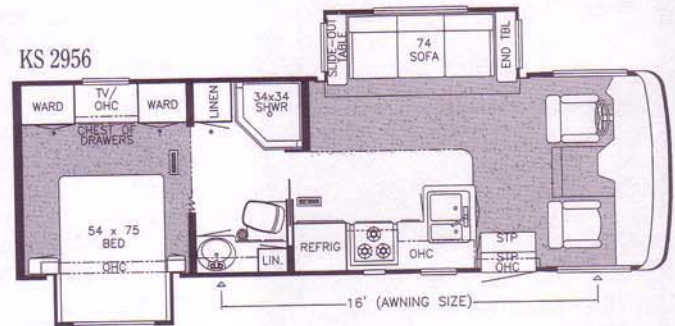
Model	SA2708	SA2956	SA3357	SA3758	SA3762	SA3767	SA3780
Chassis	N/A	Chevy P-12	Chevy P-12	Chevy P-12	Chevy P-12	Chevy P-12	Chevy P-12
Engine		454 265 HP	454 265 HP	454 265 HP	454 265 HP	454 265 HP	454 265 HP
Axle Ratio		4.78	4.78	4.78	4.78	4.78	4.78
Fuel Capacity (Gal)		75	75	75	75	75	75
Wheel Base		172"	200"	240"	240"	240"	240"
Front GAWR (Gal)		7,500	7,500	7,500	7,500	7,500	7,500
Rear GAWR (Gal)		13,500	13,500	13,500	13,500	13,500	13,500
GVWR (Gal)		21,000	21,000	21,000	21,000	21,000	21,000
GCWR (Gal)		26,000	26,000	26,000	26,000	26,000	26,000
Approx. Unloaded Vehicle Wt. (Gal)		15,470	17,320	17,590	17,570	17,730	17,540
Approx. Net Carrying Capacity (Gal)		5,530	3,680	3,410	3,430	3,270	3,460

Length, Heights, Widths and Dry Weights are Approximate. Weight will vary based on optional equipment added to the above base weight.

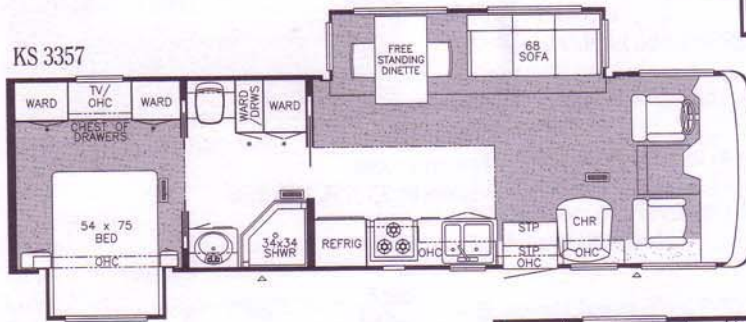
KS 2708



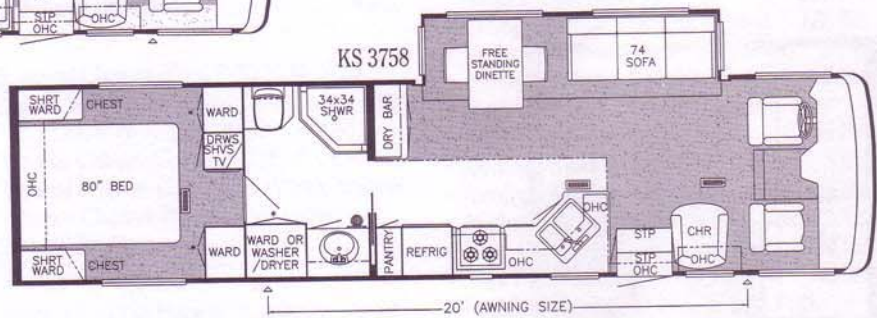
KS 2956



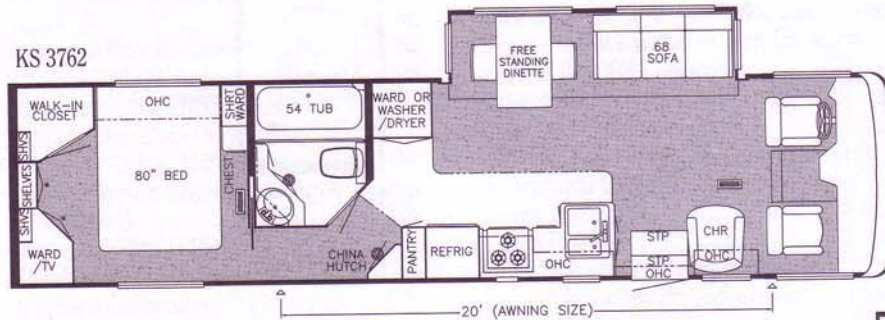
KS 3357



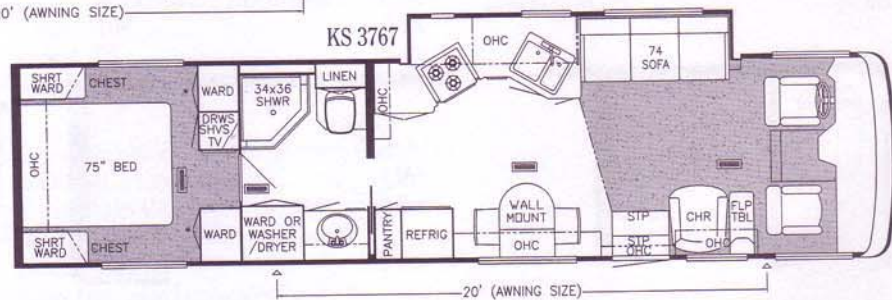
KS 3758



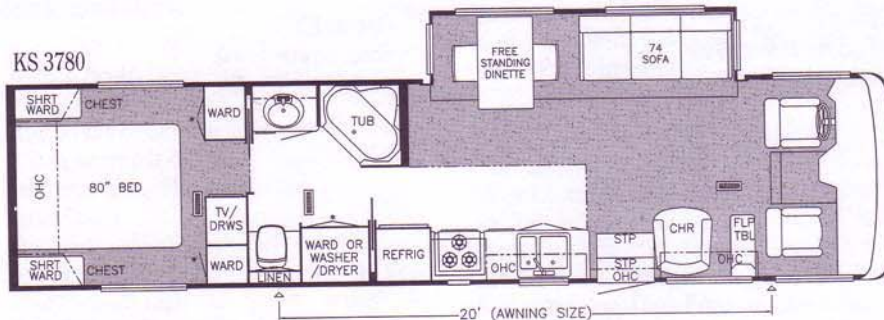
KS 3762



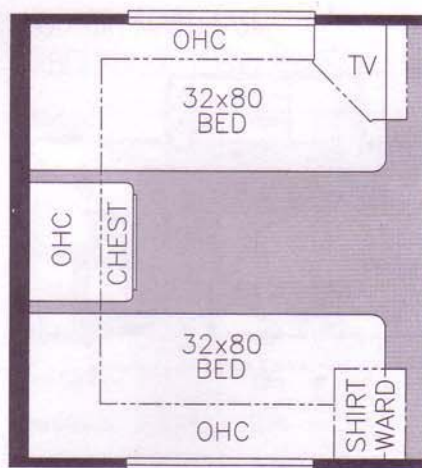
KS 3767



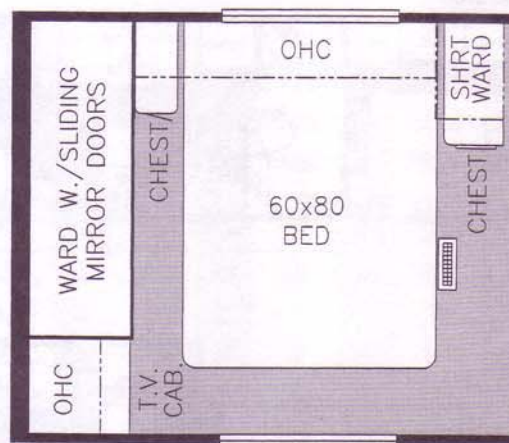
KS 3780



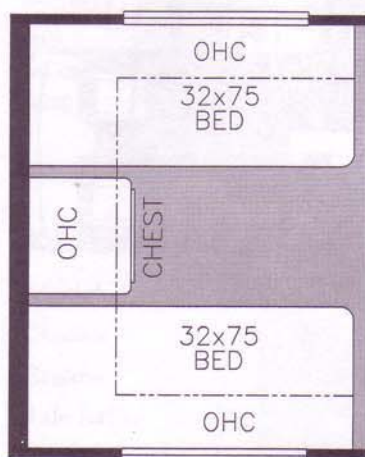
Prices, specifications, and floorplans are subject to change at Newmar's discretion without prior written notice or obligation. Some floorplans may show optional chairs or end tables. See dealer for availability.



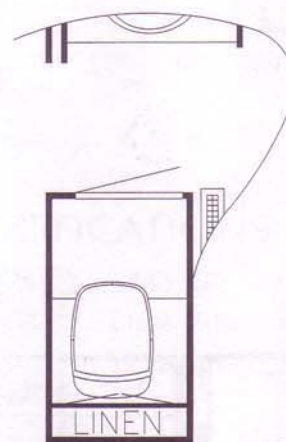
Option K092
80" twin beds
Available in: KS 2708



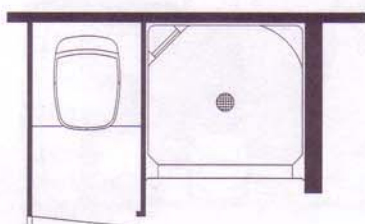
Option K950
Honeymoon suite
Available in: KS 3758, 3762, 3780



Option K096
75" twin beds
Available in: KS 3758, 3767, 3780



Option P191
Enclosed stool room
Available in: KS 3780



Option P201
Enclosed stool room w/straight shower
Available in: KS 3758



Option P210
38" corner shower ilo tub
Available in: KS 3780



Option K971
Booth Dinette ilo sofa
Available in: KS 2708

OPTIONAL FEATURES

OPTIONAL PACKAGES

WT.

- B9 Dual Air Preferred Equipment (not available on 2708, 2956 or w/Freightliner chassis) 548 lbs.
- E9 Preferred Equipment (not available on Freightliner chassis) 332 lbs.
- G9 Preferred Equipment (not available on 2708, 2956) 548 lbs.

AIR CONDITIONING & HEATING

- Air Conditioner Brisk Air 15M BTU w/Heat Pump (extra) 100 lbs.
- Air Conditioner Brisk Air 15M BTU w/Heat Pump in Place of Standard 5 lbs.
- Air Conditioner Central Penguin 13.5M BTU w/Heat Pump (extra) 100 lbs.
- Auxiliary Heater in Bedroom 20 lbs.

APPLIANCES & ACCESSORIES

- CB Antenna 1 lb.
- CB Radio 2 lbs.
- Cellular Telephone Antenna 1 lb.
- Coffee Maker 5 lbs.
- Color TV-13" 24 lbs.
- Icemaker Added to Dometic Refrigerator 5 lbs.
- Icemaker U Line 57 lbs.
- Microwave Oven Convection 30" w/3-Burner Hot Plate 13 lbs.
- Rear View Monitor Prep 1 lb.
- Rear View Monitor System 5 lbs.
- Refrigerator Dometic 1062 (10 cu. ft.) 91 lbs.
- Refrigerator Dometic Side-By-Side 1292 (12 cu. ft.) 47 lbs.
- Refrigerator Front Hardwood Raised Panel 19 lbs.
- Satellite Dish (Winegard) w/Manual System (does not include DSS receiver) 13 lbs.
- Satellite Dish Prep Only-w/RG 6 Coaxial, Phone/TV Jack & 110V Recept 2 lbs.
- Speaker Switch System (between dash area TV & stereo) 1 lb.
- Stereo AM/FM CD Player in Place of Standard Dash Stereo 0 lbs.
- Telephone Connection w/1 Phone Jack 1 lb.
- Telephone Jack Interior, Extra 1 lb.
- Trumpet Horn 2 lbs.
- TV Jack for Exterior Use on Door Side 1 lb.
- TV Jack, Extra 1 lb.
- VCR-4 Head w/TV Video Selector Switch 12 lbs.
- VCR Prep w/TV Video Selector Switch 1 lb.
- Washer/Dryer Compact One Piece 185 lbs.
- Washer/Dryer Prep 22 lbs.
- Water Heater 10 Gal. Gas/Electric w/Direct Spark Ignition 1 lb.

CABINETS & FURNITURE

- Built-In Booth Dinette w/Drawers in Place of Free Standing Table/Chairs 23 lbs.
- Built-In Booth Dinette w/Drawers in Place of Sofa (available on 2708) 55 lbs.
- Cabinetry Snow Maple w/Raised Panel Doors 0 lbs.
- Chair Flexsteel High Back Recliner w/Headrest in Place of Standard Chair 46 lbs.
- Chair Flexsteel High Back Recliner w/Headrest Leather/Vinyl in Place of Standard Chair 56 lbs.

CABINETS & FURNITURE (CONT.)

- Chair Flexsteel Large Free Standing Recliner Leather/Vinyl in Place of Standard Chair 73 lbs.
- Dinette Chairs Two Extra 20 lbs.
- Dinette Table Hidden Leaf in Place of Free Standing Table 50 lbs.
- Folding Coffee Table 20 lbs.
- Front Seat 6-Way Power 16 lbs.
- Front Seats Flexsteel Leather/Vinyl w/6-Way Power Lumbar Support & Ergo-Flex Arms 36 lbs.
- Overhead Cabinet Added in Slideout 75 lbs.
- Pull-Out Pantry 10 lbs.
- Sofa Flexsteel Hide-A-Bed in Place of Standard Sofa 52 lbs.
- Sofa Flexsteel Magic Bed in Place of Standard Sofa 20 lbs.
- Wood Doors & Shelves on China Cabinet in Place of Standard 8 lbs.

CHASSIS FEATURES

- Standard Chassis-Ford F-53 (6.8L V-10 Engine 18,000 GVWR)/Standard Chassis-Ford F-53 (6.8L V-10 Engine 20,500 GVWR)
- Optional Chassis-Chevy P-12 (Vortec engine)
- Optional Chassis-Chevy P-12 (Vortec engine)
- Optional Chassis-Freightliner Diesel (210 HP Engine)

ELECTRICAL FEATURES

- Battery (2-6V) in Place of Standard 36 lbs.
- Electrical Service 50 AMP w/Flexible Cord 9 lbs.
- Generator 7.0 KW Power Tech (diesel) in Place of Pkg. G9 Generator 195 lbs.
- Inverter 400 Watt (for dash TV & VCR) 10 lbs.
- Light Spot w/Remote Control 3 lbs.
- Lighting Fluorescent Recessed in Ceiling & Overhead Cabinets 1 lb.
- Lights Docking 4 lbs.
- Lights Driving 2 lbs.
- Lights Exterior Security (one on each side) 2 lbs.
- Lights Exterior Security (two on each side) 4 lbs.
- Recept 110V 1 lb.
- Recept 12V 1 lb.
- Surge Protector (120V) 3 lbs.

EXTERIOR FEATURES

- Convex Exterior Mirrors w/Remote Control & Defrost, Front Mounted 4 lbs.
- Exterior Sides Gel-Coated Fiberglass 40 lbs.
- Jacks Hydraulic Leveling w/"Touch" Manual Control 172 lbs.
- Jacks Hydraulic Leveling w/Joystick Controller 172 lbs.
- Roof & Top Wrap Gel-Coated Fiberglass w/1/4" Foam Insulation 2 lbs.

INTERIOR FEATURES

- Carpet Color Change From Standard Package 0 lbs.
- Floor Covering-High Pressure Laminated 15" Tile in Bath 20 lbs.
- Floor Covering-High Pressure Laminated 15" Tile in Kitchen Area 30 lbs.
- Floor Covering-High Pressure Laminated Simulated Plank in Bath 10 lbs.

INTERIOR FEATURES (CONT.)

- Floor Covering-High Pressure Laminated Simulated Plank in Kitchen Area 30 lbs.
- Sun Shade on Side Window 2 lbs.

PLUMBING/BATH FEATURES

- Assist Handle in Tub/Shower 2 lbs.
- Heat Pads for Holding Tanks 110V 2 lbs.
- Sewage Holding Tank Rinse 1 lb.
- Sewage Hose Holder (easy access flop down tray) 5 lbs.
- Shower Corner 10 lbs.
- Shower Exterior (on off door side) 2 lbs.
- Stool China w/Spray Attachment 31 lbs.
- Stool Room Enclosed 25 lbs.
- Stool Room Enclosed w/Straight Shower 35 lbs.
- Water Filter (for entire unit) 6 lbs.
- Water Filter w/Drink Dispenser (kitchen) 5 lbs.

WINDOWS, AWNINGS & VENTS

- Awning-Side A&E 8500 110 lbs.
- Awning-Side A&E 9000 128 lbs.
- Awning-Side Carefree Spirit Limited 128 lbs.
- Awning-Side Tension Rafter (shipped loose) 5 lbs.
- Awning-Slideout Cover A&E 25 lbs.
- Awning-Slideout Cover Carefree (w/full view window awning) 35 lbs.
- Awning-Window A&E 8500 5 lbs.
- Awning-Window A&E 9000 5 lbs.
- Awning-Window Carefree Spirit Limited 5 lbs.
- Door Bell 2 lbs.
- Door Driver's Side w/Power Window 50 lbs.
- Radius Windows w/Double Pane Dark Tinted Safety Glass (not available on driver/passenger area) 93 lbs.
- Rear Window 40 lbs.
- Vent-Fantastic w/Rain Sensor 11 lbs.
- Vent-Fantastic w/Rain Sensor in Place of Standard Bath Vent 11 lbs.

BEDROOM FEATURES

- Bed Twins 75" 102 lbs.
- Honeymoon Suite 9 lbs.
- Luxurious Pillow Top Mattress in Place of Standard (1) 10 lbs.

STANDARD FEATURES

AIR CONDITIONING & HEATING

- Air Conditioner Prep (110V wiring)
- Heat In Floor Ducted

APPLIANCES & ACCESSORIES

- Cable TV Connection
- Carbon Monoxide Detector
- Color TV-19"
- LP Leak Detector
- Microwave Oven 22" (not available on 3767)
- Microwave Oven Non-Convection 30" (available on 3767)
- Range Cover Laminated w/Matching Countertop Material
- Range Hood w/Light & Fan (not available on 3767)
- Range Recessed 3-Burner w/Black Glass Oven Door & Piezzo Ignition & Sealed Burners
- Refrigerator Dometic Americana 3862 (8 cu. ft.)
- Stereo AM/FM Cassette w/Clock (in dash)
- TV Antenna w/Power Booster & 2 Jacks
- Water Heater 6 Gal. Gas/Electric w/Direct Spark Ignition

CABINETS & FURNITURE

- Chair Flexsteel Swivel Barrel
- Corian Countertop w/Color Coordinated Edge & Integrated Porcelain Lavatory Bowl in Bath
- Corian Countertop in Kitchen w/color Coordinated Edge & Stainless Steel Sink
- Drawers w/Metal Guides
- Front Seats Flexsteel Fabric/Vinyl/Swivel/Recliner w/3 Point Seat Belt
- Molded Silverware Divider Tray
- Oak Raised Panel Cabinet Doors
- Sofa Flexsteel Jack Knife

CHASSIS FEATURES

- Standard Chassis-Ford F-53 (6.8L V-10 Engine)
- Cruise Control

CHASSIS FEATURES (CONT.)

- Dash Heater/Air Conditioner High Output
- Recessed Fuel Fill w/Locking Door
- Spare Tire
- Steering Wheel Tilt
- Wheel Simulators-Stainless Steel

ELECTRICAL FEATURES

- Battery (2 - 12V) on Pull-Out Tray
- Battery Disconnect (for house battery)
- Converter 75 AMP w/Charger
- Electrical Service 30 AMP
- Generator Prep (110V wire, remote start wire)
- ICC Light Flasher Switch
- Lights in Wardrobes
- Recepts 110V w/Ground Fault Interrupter (interior & exterior)
- Switch for Emergency Chassis Engine Start

EXTERIOR FEATURES

- Convex Exterior Mirrors (driver-side mount-passenger-front mount)
- Exterior Front and Rear Gel-Coated Fiberglass End Caps
- Exterior Sides Filon Fiberglass
- Hitch for Towing Car (w/2 extra 14 gauge wires for customer use)(class-2, 5000# rating)
- Mud Flaps (front & rear)
- Roof Rubber w/9MM Decking
- Roof Rack & Ladder
- Slideout Large w/Patented Flat Floor (see floorplans for availability & layout)
- Undercoating

INTERIOR FEATURES

- Ceiling Woven Soft Touch
- Decorative Wall Clock & Mirror
- Floor Covering-Carpet Staintech, 40 oz. 100% Nylon Plush Saxony w/Stainmaster Finish
- Floor Covering-Vinyl in in Kitchen Area & Bath

INTERIOR FEATURES (CONT.)

- Sink Covers-Two
- Smoke Detector & 10 BC Fire Extinguisher
- Window Treatment Day/Night Pleated Shades & Lamberquins
- Window Treatment Mini Blinds (kitchen)

PLUMBING/BATH FEATURES

- Bath Accessories White (2 towel bars, 1 tissue holder & robe hook)
- Monitor Panel
- Stool Aqua Magic IV
- Tub/Shower Fiberglass w/Enclosure
- Winterize Convenience Package (w/water heater bypass)

CONSTRUCTION FEATURES

- Insulation Fiberglass R7 Sidewalls & Floor, R11 Roof
- Insulation Foam 5/8" Laminated in Sidewalls & Ceiling
- Rear Bumper w/Slideout Tray for Spare Tire (not available on 2708, 2956)
- Structure-101" Widebody
- Structure-Aluminum Sidewalls & Roof, 16" On Center

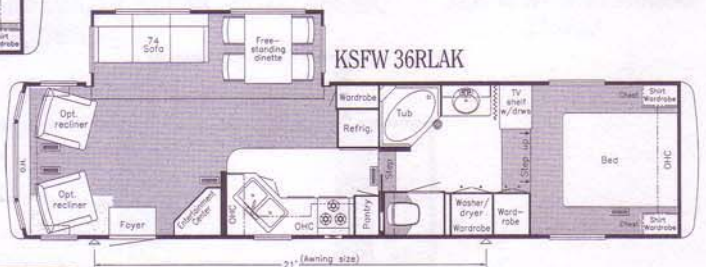
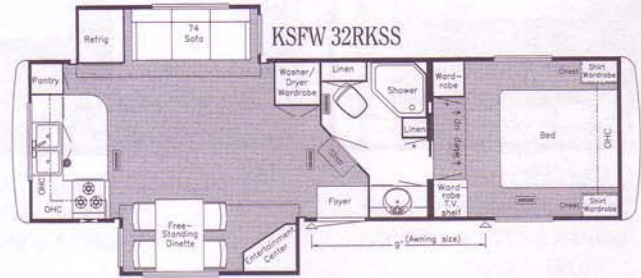
WINDOWS, AWNINGS & VENTS

- Exterior Lighted Acrylic Assist Handle (at main entrance door)
- Radius Windows w/Dark Tinted Safety Glass
- Skylight in Bathroom
- Step-Automatic Double
- Vent-Power in Bath Area w/Wall Switch

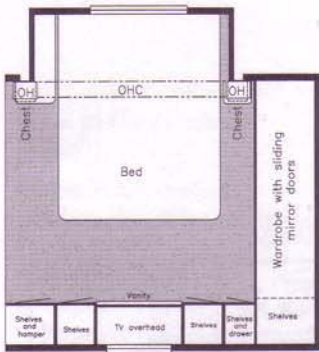
BEDROOM FEATURES

- Bedspread Quilted w/Reversed Sham & Accent Pillow
- Lifts for Convenient Storage Under Fixed Beds
- Slideout in Bedroom)

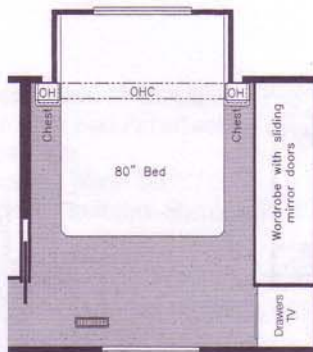




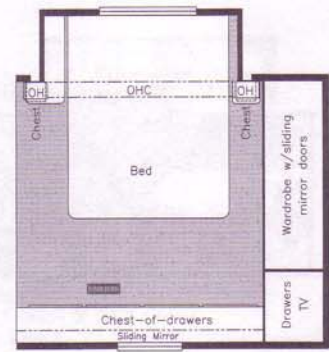
Prices, specifications, and floorplans are subject to change at Newmar's discretion without prior written notice or obligation. Some floorplans may show optional chairs or end tables. See dealer for availability.



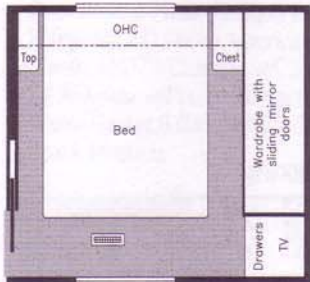
Option M396
Cabover S.O. w/vanity center
Available in: KSF 32RKSS,
34SKDS



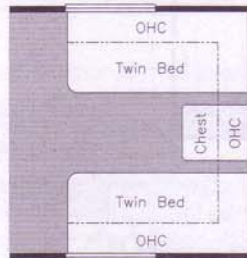
Option M700
Cabover S.O. w/80" bed
Available in: KSF 30RKCL



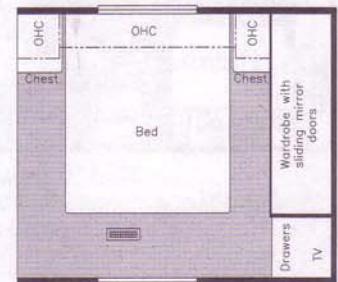
Option M436
Cabover S.O. w/dresser center
Available in: KSF 32RKSS,
34SKDS



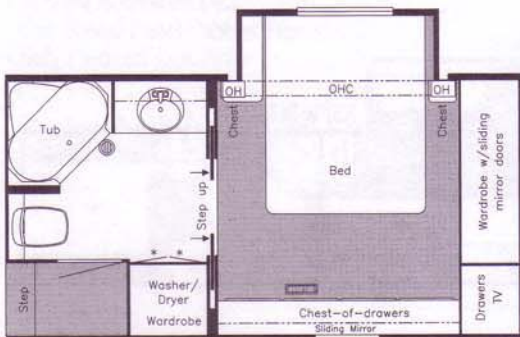
Option K033
Honeymoon suite
Available in: KSF 30RKCL



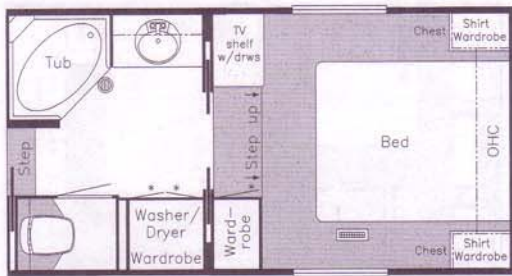
Option K081
75" Twin beds
Available in: All KSF without C/O S.O.
except 30RKCL



Option K350
Honeymoon suite
Available in: KSF
32RKSS, 34SKDS



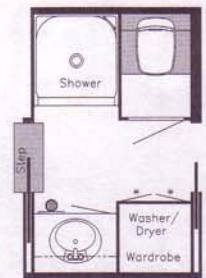
Option M429
Cabover S.O. w/dresser center & sliding doors
Available in: KSF 34BKSA



Option K992
Sliding doors ilo bifold
Available in: KSF 34BKWB, 36RDSK, 36RKLD,
36RLAK, 39BRCK



Option K997
Honeymoon suite w/sliding doors
Available in: KSF 34BKSA



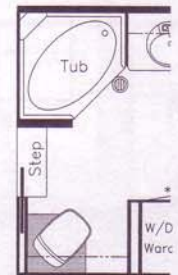
Option P181
enclosed stool room
w/straight shower
Available in: KSF 34SKDS



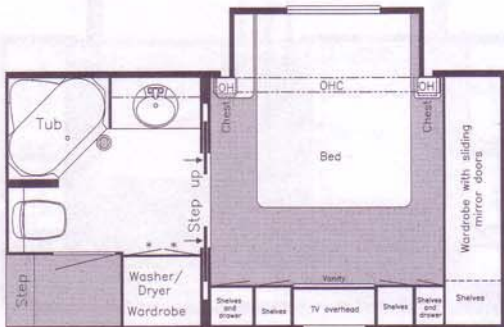
Option K030
Honeymoon suite
Available in: KSF 34BKWB, 36RDSK,
36RKLD, 36RLAK, 39BRCK



Option K031
Honeymoon suite
Available in: KSF 34BKSA



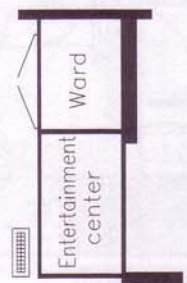
Option P162
Unenclosed stool room
Available in: KSF 34BKWB, 36RDSK,
36RKLD, 36RLAK, 39BRCK



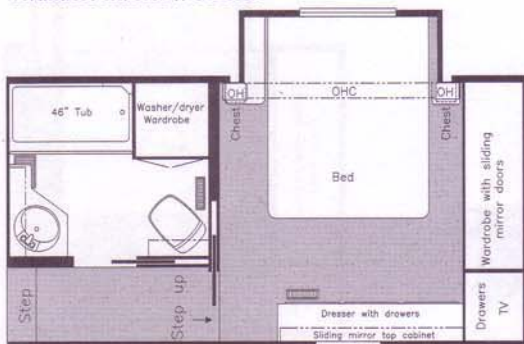
Option M389
Cabover S.O. w/vanity center &
sliding doors
Available in: KSF 34BKSA



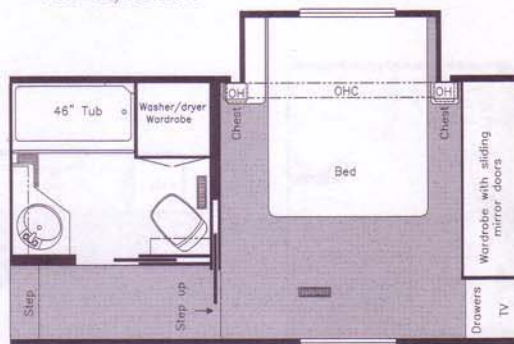
Option M619
Cabover S.O. w/sliding doors
Available in: KSF 34BKWB, 36RKLD, 36RDSK,
36RLAK, 39BRCK



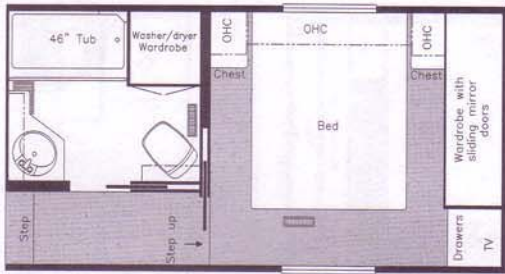
Option K941
Wardrobe ilo desk
Available in: KSF 34BKSA



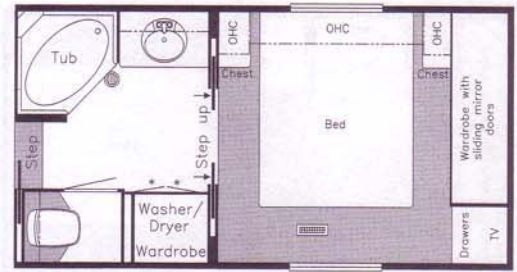
Option M741
Cabover S.O. w/dresser center & w/throughside aisle
(N/A code states) Available in: KSF 34BKSA



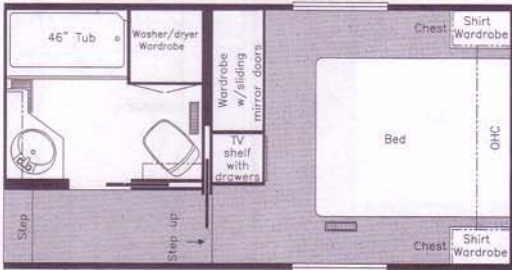
Option M721
Cabover S.O. w/throughside aisle (N/A code states)
Available in: KSF 34BKSA



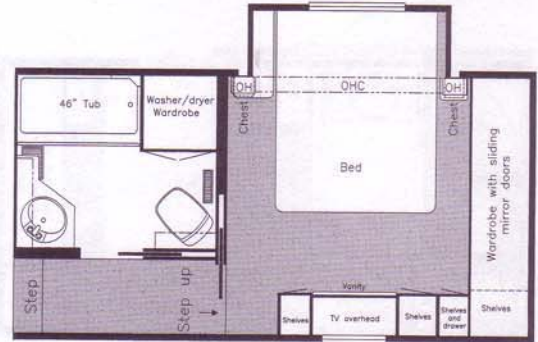
Option K563
Honeymoon suite w/throughside
aisle (N/A code states)
Available in: KSF 34BKSA



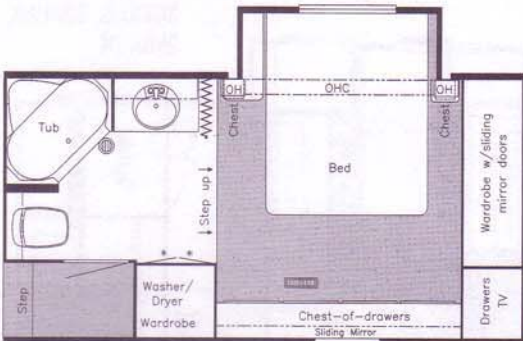
Option K996
Honeymoon suite w/sliding doors
Available in: KSF 34BKWB, 36RDSK,
36RKLD, 36RLAK, 39BRCK



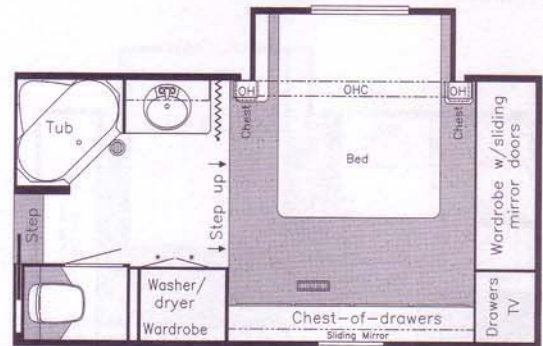
Option K562
Throughside aisle bath (N/A code states)
Available in: KSF 34BKSA



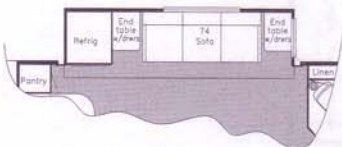
Option M731
Cabover S.O. w/vanity center &
w/throughside aisle (N/A code states) Available in: KSF 34BKSA



Option M434
Cabover S.O. w/dresser center
Available in:
KSF 34BKSA



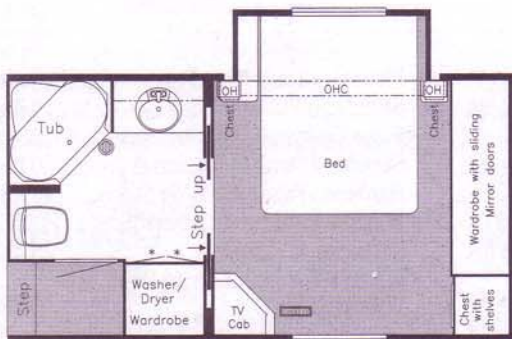
Option M433
Cabover S.O. w/dresser center
Available in: KSF 34BKWB, 36RDSK,
36RKLD, 36RLAK, 39BRCK



Option K541
Washer/dryer wardrobe delete w/larger S.O.
Available in: KSF 32RKSS



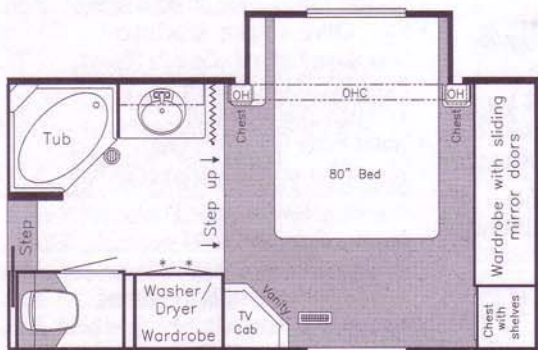
Option K542
Washer/dryer wardrobe delete w/window
Available in: KSF 32RKSS



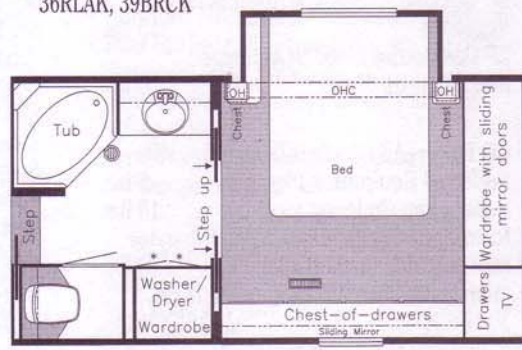
Option M622
Cabover S.O. w/sliding doors
Available in: KSF 34BKSA



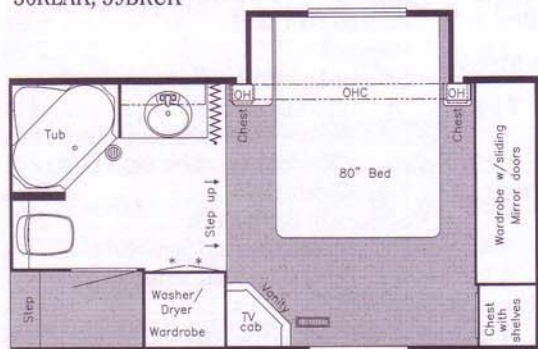
Option M399
Cabover S.O. w/vanity center & sliding doors
Available in: KSF 34BKWB, 36RDSK, 36RKLD, 36RLAK, 39BRCK



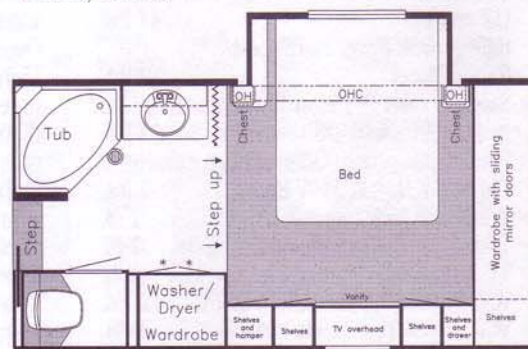
Option M613
Cabover S.O. w/80" bed
Available in: KSF 34BKWB, 36RDSK, 36RKLD, 36RLAK, 39BRCK



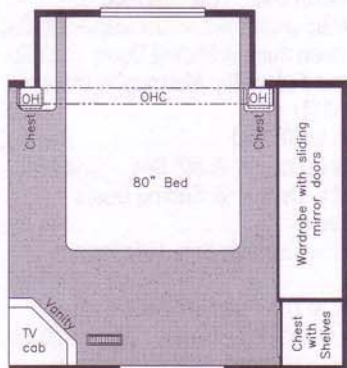
Option M439
Cabover S.O. w/dresser center & sliding doors
Available in: KSF 34BKWB, 36RDSK, 36RKLD, 36RLAK, 39BRCK



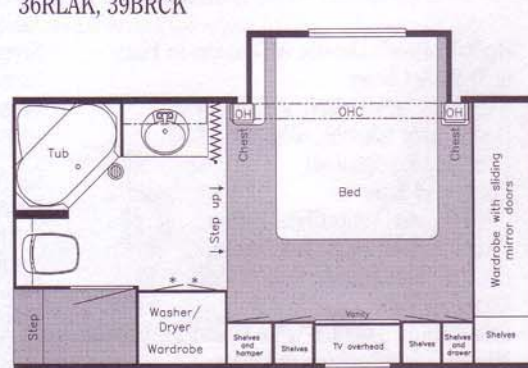
Option M614
Cabover S.O. w/80" bed
Available in: KSF 34BKSA



Option M393
Cabover S.O. w/vanity center
Available in: KSF 34BKWB, 36RDSK, 36RKLD, 36RLAK, 39BRCK



Option M616
Cabover S.O. w/80" bed
Available in: KSF 32RKSS, 34SKDS



Option M394
Cabover S.O. w/vanity center
Available in: KSF 34BKSA

OPTIONAL FEATURES

OPTIONAL PACKAGES

H9 XL Preferred Equipment	197 lbs.
VR(XL Preferred Equipment	200 lbs.

AIR CONDITIONING & HEATING

Air Conditioner Brisk Air 13.5M BTU (extra)	95 lbs.
Air Conditioner Brisk Air 15M BTU (extra)	100 lbs.
Air Conditioner Brisk Air 15M BTU in Place of Pkg. R9 Air	5 lbs.
Air Conditioner Brisk Air 15M BTU w/Heat Pump (extra)	100 lbs.
Air Conditioner Brisk Air 15M BTU w/Heat Pump in Place of Pkg. R9 Air	5 lbs.
LP Gas 2-40# Aluminum w/Automatic Regulator-on Slides	27 lbs.
LP Gas Bottles 2-40# w/Automatic Regulator	15 lbs.
LP Gas Bottles 2-40# w/Automatic Regulator-on Slides	20 lbs.

APPLIANCES & ACCESSORIES

CD Player-Add On (available only w/XL Preferred Equipment Pkg. R9)	5 lbs.
Ceiling Fan (in living area)	10 lbs.
Icemaker Added to Dometic Refrigerator (not available on 32 RKSS)	5 lbs.
Microwave Oven 22" (not available on 39 BRCK)	31 lbs.
Microwave Oven Convection 30" w/3-Burner Hot Plate	42 lbs.
Microwave Oven Non-Convection 30"	89 lbs.
Refrigerator Dometic 1062 (10 cu. ft.)	91 lbs.
Refrigerator Dometic Side-By-Side 1292 (12 cu. ft.)	47 lbs.
Refrigerator Front Hardwood Raised Panel	19 lbs.
Satellite Dish (Winegard) w/Manual System (does not include DSS receiver)	13 lbs.
Satellite Dish Prep Only-w/RG 6 Coaxial, Phone/TV Jack & 110V Recept	2 lbs.
Telephone Jack Interior, Extra	1 lb.
TV Jack for Exterior Use on Door Side	1 lb.
TV Jack, Extra	1lb.
VCR-4 Head w/TV Video Selector Switch	12 lbs.
VCR Prep w/TV Video Selector Switch	1 lb.
Washer/Dryer Compact One Piece w/50 Amp Service (not available on 30 RKCL)	185 lbs.
Washer/Dryer Prep w/50 Amp Service (not available on 30 RKCL)	22 lbs.

CABINETS & FURNITURE

Built-In Booth Dinette w/Drawers in Place of Table & Chairs	
Cabinetry Snow Maple w/Raised Panel Doors (only available w/option R9 XL Preferred Equipment)	0 lbs.
Chair End Table	9 lbs.
Chair Flexsteel Petite Glider/Recliner	114 lbs.
Chair Flexsteel Swivel Glider/Recliner	121 lbs.
Dinette Table Hidden Leaf in Place of Free Standing Table	50 lbs.
Entertainment Center w/No Decorative Glass, Mirrors, Clear Shelving or Lights	30 lbs.
Pull-Out Pantry	10 lbs.
Slideout Larger w/Wardrobe Delete	-25 lbs.
Sofa Cocktail Table	75 lbs.

CABINETS & FURNITURE (CONT.)

Sofa Flexsteel Hide-A-Bed in Place of Standard Sofa	52 lbs.
Sofa Flexsteel Magic Bed in Place of Standard Sofa	20 lbs.
Sofa Storage Cabinet	37 lbs.
Upper/Lower Bookcase in Place of Desk	55 lbs.
Wardrobe Delete w/Window	-25 lbs.
Wardrobe in Place of Desk	

CHASSIS FEATURES

Spare Tire	90 lbs.
Suspension Independent MOR/ryde (not available w/dual wheel option)	
Tandem Axle Dual Wheels w/MOR/ryde Suspension (available on 36 RDSK, RKLD, RLAK)	212 lbs.
Tandem Axle Dual Wheels w/Torflex Suspension (available on 36 RDSK, RKLD, RLAK)	212 lbs.
Tandem Axle Dual Wheels w/Torflex Suspension (available on 39 BRCK)	212 lbs.
Tires "G" Range & Dual wheels (set of 4) (not available on 39 BRCK)	120 lbs.

ELECTRICAL FEATURES

Battery 12V (extra)	42 lbs.
Battery Disconnect Switch	1 lb.
Electrical Service 50 AMP	9 lbs.
Flexible 50 AMP Power Cord	0 lbs.
Generator 5.5 KW Onan Marquis w/Automatic Changeover & Battery	297 lbs.
Generator Prep (110V wire, remote start wire)	1 lb.
Lighting Fluorescent Recessed in Ceiling & Overhead Cabinets	1 lb.
Lights Exterior Security (one on each side)	2 lbs.
Lights Exterior Security (two on each side)	4 lbs.
Lights in Exterior Storage Compartments w/Automatic Switches	
Recept 110V	1 lb.
Recept 12V	1 lb.
Solar Prep (12V wire from roof to battery compartment)	1 lb.
Surge Protector (120V)	3 lbs.

EXTERIOR FEATURES

Exterior Sides Gel-Coated Fiberglass	0 lbs.
Hitch Plate & Bracket 21000#	0 lbs.
Jacks Stabilizers Extra	40 lbs.
Snaps for Fifth Wheel Jacks	1 lb.
Stone Guard Pull Down Vinyl Recessed in Front Fiberglass Cap	15 lbs.

INTERIOR FEATURES

Carpet Color Change from Standard Package	0 lbs.
Entrance Door Trimmed w/Hardwood & a Door to Conceal Electrical Switches	5 lbs.
Floor Covering-Carpet in Bath	30 lbs.
Floor Covering-High Pressure Laminated 15" Tile in Bath	20 lbs.
Floor Covering-High Pressure Laminated 15" Tile in Kitchen & Foyer Area	30 lbs.

INTERIOR FEATURES (CONT.)

Floor Covering-High Pressure Laminated Simulated Plank in Bath	10 lbs.
Floor Covering-High Pressure Laminated Simulated Plank in Kitchen & Foyer	30 lbs.
Hardwood/Fabric Fascia on Slideout	40 lbs.
Window Treatment Lamberquins in Place of Drapes & Valances	25 lbs.
Window Treatment Lined Day/Night Pleated Shades	5 lbs.

PLUMBING/BATH FEATURES

Assist Handle in Tub/Shower	2 lbs.
Heat Pads for Holding Tanks 110V	3 lbs.
Sewage Holding Tank Rinse	1 lb.
Shower Exterior (on off door side)	2 lbs.
Stool China w/Spray Attachment	31 lbs.
Stool Room Enclosed w/Straight Shower	9 lbs.
Stool Room Unenclosed	-27 lbs.
Through Side Aisle Bath	-25 lbs.
Water Filter (for entire unit)	6 lbs.
Water Filter w/Drink Dispenser (kitchen)	5 lbs.

WINDOWS, AWNINGS & VENTS

Awning-Side A&E 8500	110 lbs.
Awning-Side A&E 9000	128 lbs.
Awning-Side Carefree Spirit Limited	128 lbs.
Awning-Side Tension Rafter (shipped loose)	5 lbs.
Awning-Window A&E 8500 (only off door side)	5 lbs.
Awning-Window A&E 9000 (only off door side)	5 lbs.
Awning-Window Carefree Spirit Limited (only off door side)	5 lbs.
Door Bell	2 lbs.
Exterior Lighted Acrylic Assist Handle (at main entrance door)	1 lb.
Radius Windows w/Dark Tinted Safety Glass	0 lbs.
Radius Windows w/Double Pane Dark Tinted Safety Glass	110 lbs.
Skylight in Bathroom	2 lbs.
Vent-Fantastic w/Rain Sensor	11 lbs.
Vent-Fantastic w/Rain Sensor in Place of Standard Bath Vent	11 lbs.
Vent-Power w/Wall Switch, Extra	5 lbs.

BEDROOM FEATURES

Bed Twins 75"	102 lbs.
Honeymoon Suite	129 lbs.
Honeymoon Suite Through Side Aisle Bath	125 lbs.
Honeymoon Suite w/Sliding Doors	83 lbs.
Luxurious Pillow Top Mattress in Place of Standard (1)	10 lbs.
Slideout w/80" Bed	348 lbs.
Slideout w/Dresser & 80" Bed	447 lbs.
Slideout w/Dresser & Sliding Doors w/80" Bed	444 lbs.
Slideout w/Through Side Aisle Bath & 80" Bed	-25 lbs.
Slideout w/Through Side Aisle Bath & Dresser w/80" Bed	-25 lbs.
Slideout w/Through Side Aisle Bath & Vanity w/80" Bed	-25 lbs.
Slideout w/Vanity & 80" Bed	444 lbs.
Slideout w/Vanity & Sliding doors	444 lbs.
Sliding Doors in Bedroom	83 lbs.

STANDARD FEATURES

AIR CONDITIONING & HEATING

- Air Conditioner Prep (110V wiring)
- Heat in Floor Ducted
- LP Gas Bottles 2-30# w/Automatic Regulator

APPLIANCES & ACCESSORIES

- Cable TV Connection
- LP Leak Detector
- Microwave Prep
- Range 3-Burner w/Black Glass Oven Door w/Piezzo Ignition & Sealed Burners
- Range Hood w/Light & Fan
- Refrigerator Dometic Royale 3862 (8 cu. ft.)
- Stereo Prep (antenna, speaker wire & 12V wire)
- TV Antenna w/Power Booster & 2 Jacks
- Water Heater 6 Gal. Gas

CABINETS & FURNITURE

- Corian Countertop in Kitchen w/Color Coordinated Edge & Stainless Steel Sink
- Dinette Table w/Hardwood Top & Four Chairs (floorplans w/slideout)
- Laminate Countertop w/Color Coordinated Edge & Porcelain Lavatory Bowl in Bath
- Molded Silverware Divider Tray
- Oak Hardwood Frame Cabinet Doors
- Sofa Flexsteel Jack Knife

CHASSIS FEATURES

- Easy Lube Equalizers
- Frame Size 12" I-Beam w/Maximum Storage

CHASSIS FEATURES (CONT.)

- Shock Absorbers
- Skid Bars for Rear Bottom Protection

ELECTRICAL FEATURES

- Battery (1-12V)
- Converter 50 AMP w/Charger
- Electrical Power-To-Power Slideout 110 & 12V
- Electrical Service 30 AMP
- Recepts 110V w/Ground Fault Interrupter (interior & exterior)

EXTERIOR FEATURES

- Exterior Front & Rear Gel-Coated Fiberglass End Caps
- Exterior Sides Filon Fiberglass
- Exterior Storage in Rear Cap (not available on bay window floorplans)
- Jacks Stabilizer (1 pair)
- Roof & Top Wrap Rubber w/9MM Decking
- Slideout Large w/Patented Flat Floor (see floorplans for availability & layout)

INTERIOR FEATURES

- Ceiling Woven Soft Touch
- Decorative Border in Kitchen & Bath Area
- Floor Covering-Carpet Staintech, 40 oz. 100% Nylon Plush Saxony w/Stainmaster Finish
- Floor Covering-Vinyl in Kitchen, Bath & Foyer

INTERIOR FEATURES (CONT.)

- Sink Covers-Two
- Smoke Detector & 5 BC Fire Extinguisher
- Window Treatment Day/Night Pleated Shades & Lined Drapes
- Window Treatment Mini Blinds (kitchen)

PLUMBING/BATH FEATURES

- Bath Accessories White (2 towel bars, 1 tissue holder & robe hook)
- Monitor Panel
- Stool Aqua Magic IV
- Winterize Convenience Package (w/water heater bypass)

CONSTRUCTION FEATURES

- Insulation Fiberglass R7 Sidewalls, Floor & Roof
- Rear Bumper w/Slideout Tray for Spare Tire
- Structure-101" Widebody
- Structure-Aluminum Sidewalls & Roof, 16" on Center
- Underbelly Enclosed & Insulated w/Fiberglass Insulation

WINDOWS, AWNINGS & VENTS

- Radius Windows
- StepTriple
- VentPower in Bath Area w/Wall Switch

BEDROOM FEATURE

- Bed Queen (60" x 75")

KOUNTRY STAR® FIFTH WHEEL SPECIFICATIONS

Unit	No. Axles	Axle Cap	Tire	GAWR (lbs)	GVWR	Length	Height	Width	Weight	Hitch Weight	Fresh Water	Grey Water Cap.	Sewage Water Cap.	Heating Capacity
KS FW 30 RKCL	2	7000	235-85-R 16E	6000	14000	31'-9"	12'-3"	101"	9822	1866	100 Gal.	50 Gal.	50 Gal.	35,000 btu
KS FW 32 RKSS	2	7000	235-85-R 16E	6000	14000	32'-11"	12'-3"	101"	10819	2380	68 Gal.	84 Gal.	42 Gal.	42,000 btu
KS FW 34 BKSA	2	7000	235-85-R 16E	6000	14000	35'-10"	12'-3"	101"	10800	2160	100 Gal.	50 Gal.	50 Gal.	42,000 btu
KS FW 34 BKWB	2	7000	235-85-R 16E	6000	14000	35'-4"	12'-3"	101"	10800	2160	100 Gal.	50 Gal.	50 Gal.	42,000 btu
KS FW 34 SKDS	2	7000	235-85-R 16G	7000	15000	35'-4"	12'-3"	101"	11652	1748	100 Gal.	50 Gal.	50 Gal.	42,000 btu
KS FW 36 RDSK	2	7000	235-85-R 16G	7000	15000	37'-2"	12'-3"	101"	11200	1904	75 Gal.	100 Gal.	50 Gal.	55,000 btu
KS FW 36 RKLD	2	7000	235-85-R 16G	7000	15000	37'-2"	12'-3"	101"	11097	1197	75 Gal.	100 Gal.	50 Gal.	55,000 btu
KS FW 36 RLAK	2	7000	235-85-R 16G	7000	15000	37'-2"	12'-3"	101"	11009	1761	75 Gal.	100 Gal.	50 Gal.	55,000 btu
KS FW 39 BRCK	3	6000	235-85-R 16E	6000	18000	39'-2"	12'-3"	101"	11831	2248	75 Gal.	100 Gal.	50 Gal.	55,000 btu

Length, Heights, Widths, Dry Weights and Hitch Weights are Approximate. Weight will vary based on optional equipment added to the above base weight.



FIFTH WHEEL STANDARD FEATURES

OPTIONAL FEATURES

OPTIONAL PACKAGES

• H9 XL Preferred Equipment	197 lbs.
• R9 XL Preferred Equipment	200 lbs.

AIR CONDITIONING & HEATING

• Air Conditioner Brisk Air 13.5M BTU (extra)	95 lbs.
• Air Conditioner Brisk Air 15M BTU (extra)	100 lbs.
• Air Conditioner Brisk Air 15M BTU in Place of Pkg. R9 Air	5 lbs.
• Air Conditioner Brisk Air 15M BTU w/Heat Pump (extra)	100 lbs.
• Air Conditioner Brisk Air 15M BTU w/Heat Pump in Place of Pkg. R9 Air	5 lbs.

APPLIANCES & ACCESSORIES

• CD Player-Add On (available only w/XL Preferred Equipment Pkg. R9)	5 lbs.
• Icemaker Added to Dometic Refrigerator	5 lbs.
• Microwave Oven 22"	31 lbs.
• Microwave Oven Convection 30" w/3-Burner Hot Plate	42 lbs.
• Microwave Oven Non-Convection 30"	89 lbs.
• Refrigerator Dometic 1062 (10 cu.ft.)	91 lbs.
• Refrigerator Front Hardwood Raised Panel	19 lbs.
• Satellite Dish (Winegard) w/Manual System (does not include DSS receiver)	13 lbs.
• Satellite Dish Prep Only-w/RG 6 Coaxil, Phone/TV Jack & 110V Recept	2 lbs.
• Telephone Jack Interior, Extra	1 lb.
• TV Jack for Exterior Use on Door Side	1 lbs.
• TV Jack, Extra	1 lbs.
• VCR-4 Head w/TV Video Selector Switch	12 lbs.
• VCR Prep w/TV Video Selector Switch	1 lb.
• Washer/Dryer Compact One Piece	185 lbs.
• Washer/Dryer Prep	22 lbs.
• Washer/Dryer Sears	232 lbs.

CABINETS & FURNITURE

• Built-In Booth Dinette w/Drawers in Place of Free Standing Table/Chairs	23 lbs.
• Cabinetry Snow Maple w/Raised Panel Doors (only available w/option R9 XL Preferred Equipment)	0 lbs.

CABINETS & FURNITURE (CONT.)

• Chair End Table	9 lbs.
• Chair Flexsteel Petite Glider/Recliner	114 lbs.
• Chair Flexsteel Swivel Glider/Recliner	121 lbs.
• Entertainment Center w/No Decorative Glass, Mirrors, Clear Shelving or Lights	30 lbs.
• Sofa Flexsteel Hide-A-Bed in Place of Standard Sofa	52 lbs.

CHASSIS FEATURE

• Spare Tire	90 lbs.
--------------	---------

ELECTRICAL FEATURES

• Battery 12V (extra)	42 lbs.
• Battery Disconnect Switch	1 lb.
• Electrical Service 50 AMP	9 lbs.
• Flexible 50 AMP Power Cord	0 lbs.
• Lighting Fluorescent Recessed in Ceiling & Overhead Cabinets	1 lb.
• Lights Exterior Security (one on each side)	2 lbs.
• Lights Exterior Security (two on each side)	4 lbs.
• Lights in Exterior Storage Compartments w/Automatic Switches	
• Recept 110V	1 lb.
• Recept 12V	1 lb.
• Solar Prep (12V wire from roof to battery compartment)	1 lb.
• Surge Protector (12V)	3 lbs.

EXTERIOR FEATURES

• Exterior Sides Gel-Coated Fiberglass	0 lbs.
• Jacks Stabilizer (2 pair)	66 lbs.
• Power Front Hitch	10 lbs.

INTERIOR FEATURES

• Carpet Color Change from Standard Package	0 lbs.
• Entrance Door Trimmed w/Hardwood & a Door to Conceal Electrical Switches	5 lbs.
• Floor Covering-Carpet in Bath	30 lbs.
• Floor Covering-High Pressure Laminated 15" Tile in Bath	20 lbs.
• Floor Covering-High Pressure Laminated 15" Tile in Kitchen & Foyer Area	30 lbs.
• Floor Covering-High Pressure Laminated Simulated Plank in Bath	10 lbs.
• Floor Covering-High Pressure Laminated Simulated Plank in Kitchen & Foyer	30 lbs.

INTERIOR FEATURES (CONT.)

• Hardwood/Fabric Fascia on Slideout	40 lbs.
• Window Treatment Lamberquins in Place of Drapes & Valances	25 lbs.
• Window Treatment Lined Day/Night Pleated Shades	5 lbs.

PLUMBING/BATH FEATURES

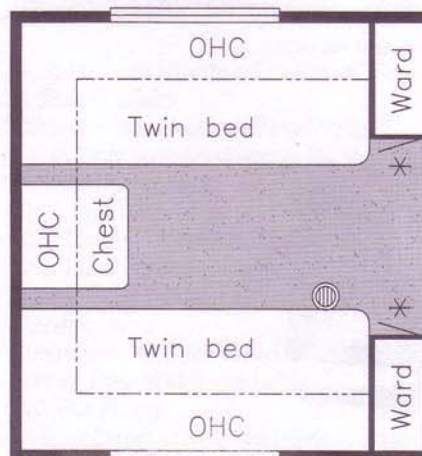
• Assist Handle in Tub/Shower	2 lbs.
• Sewage Holding Tank Rinse	1 lb.
• Shower Exterior (on off door side)	2 lbs.
• Stool China w/Spray Attachment	31 lbs.
• Water Filter (for entire unit)	6 lbs.
• Water Filer w/Drink Dispenser (kitchen)	5 lbs.

WINDOWS, AWNINGS & VENTS

• Awning-Rear (on floorplans w/single rear windows)	9 lbs.
• Awning-Side A&E 8500	110 lbs.
• Awning-Side A&E 9000	128 lbs.
• Awning-Side Carefree Spirit Limited	128 lbs.
• Awning-Side Tension Rafter (shipped loose)	5 lbs.
• Awning-Window A&E 8500	5 lbs.
• Awning-Window A&E 9000	5 lbs.
• Door Bell	2 lbs.
• Entrance Door in Bedroom	104 lbs.
• Exterior Lighted Acrylic Assist Handle (at main entrance door)	1 lb.
• Radius Windows w/Dark Tinted Safety Glass	0 lbs.
• Radius Windows w/Double Pane Dark Tinted Safety Glass	110 lbs.
• Skylight in Bathroom	2 lbs.
• Vent-Fantastic w/Rain Sensor	11 lbs.
• Vent-Fantastic w/Rain Sensor in Place of Standard Bath Vent	11 lbs.
• Vent-Power w/Wall Switch, Extra	5 lbs.

BEDROOM FEATURES

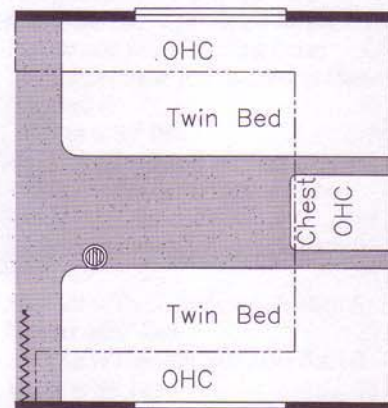
• Bed Twins 75" (available on 34 CFKS, FKWS)	102 lbs.
• Bed Twins 75" (available on 34 WBRL, RDFB)	102 lbs.
• Luxurious Pillow Top Mattress in Place of Standard (1)	10 lbs.



Option K087
75" Twin beds
Available in:
KSTT 34CFKS, 34FKWS

Option K109
75" Twin beds
Available in:
KSTT 34RDFB,
34WBRL

Prices, specifications, and floorplans are subject to change at Newmar's discretion without prior written notice or obligation. Some floorplans may show optional chairs or end tables. See dealer for availability.



STANDARD FEATURES

AIR CONDITIONING & HEATING

- Air Conditioner Prep (110V wiring)
- LP Gas Bottles 2-30# w/Automatic Regulator-In Slideout Rear Bumper

APPLIANCES & ACCESSORIES

- Cable TV Connection
- LP Leak Detector
- Microwave Prep
- Range 3-Burner w/Black Glass Oven Door w/Piezzo Ignition & Sealed Burners
- Range Hood w/Light & Fan
- Refrigerator Dometic Royale 3862 (8 cu. ft.)
- Stereo Prep (antenna, speaker wire & 12V wire)
- TV Antenna w/Power Booster & 2 Jacks
- Water Heater 6 Gal. Gas

CABINETS & FURNITURE

- Corian Countertop in Kitchen w/Color Coordinated Edge & Stainless Steel Sink
- Dinette Table w/Hardwood Top & Four Chairs (floorplans w/slideout)
- Laminate Countertop w/Color Coordinated Edge & Porcelain Lavatory Bowl in Bath
- Molded Silverware Divider Tray
- Oak Hardwood Frame Cabinet Doors
- Sofa Flexsteel Jack Knife

CHASSIS FEATURES

- Frame Size 12" I-Beam w/Molded Wrap Maximum Storage
- Safety Chains
- Shock Absorbers
- Skid Bars for Rear Bottom Protection

ELECTRICAL FEATURES

- Battery (1-12V)
- Converter 50 AMP w/Charger
- Electrical Power-To-Power Slideout 110 & 12V
- Electrical Service 30 AMP
- Recepts 110V w/Ground Fault Interrupter (interior & exterior)

EXTERIOR FEATURES

- Exterior Front & Rear Gel-Coated Fiberglass End Caps
- Exterior Sides Filon Fiberglass
- Roof & Top Wrap Rubber w/9MM Decking
- Slideout Large w/Patented Flat Floor (see floorplans for availability & layout)

INTERIOR FEATURES

- Ceiling Woven Soft Touch
- Decorative Border in Kitchen & Bath Area
- Floor Covering-Carpet Staintech, 40 oz. 100% Nylon Plush Saxony w/Stainmaster Finish
- Floor Covering-Vinyl in Kitchen, Bath & Foyer
- Sink Covers-Two

INTERIOR FEATURES (CONT.)

- Smoke Detector & 5 BC Fire Extinguisher
- Window Treatment Day/Night Pleated Shades & Lined Drapes
- Window Treatment Mini Blinds (kitchen)

PLUMBING/BATH FEATURES

- Bath Accessories White (2 towel bars, 1 tissue holder & robe hook)
- Monitor Panel
- Stool Aqua Magic IV
- Winterize Convenience Package (w/water heater bypass)

CONSTRUCTION FEATURES

- Insulation Fiberglass R7 Sidewalls, Floor & Roof
- Rear Bumper w/Slideout Tray for Spare Tire
- Structure-Aluminum Sidewalls & Roof, 16" on Center
- Underbelly Enclosed Aluminum w/Laminated 5/8" Foam

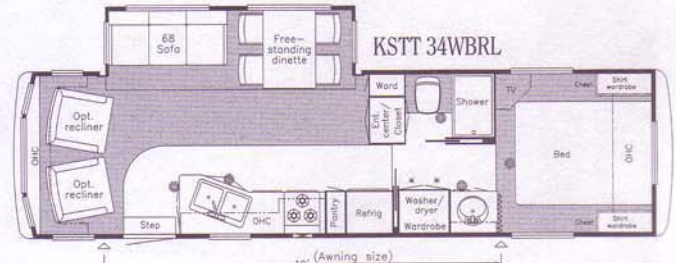
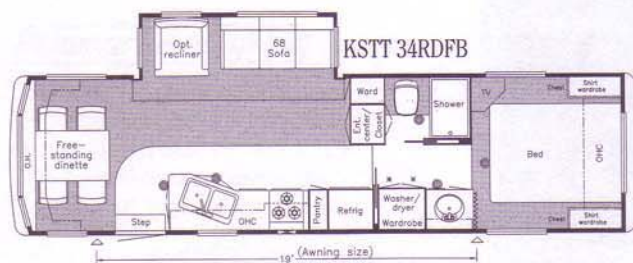
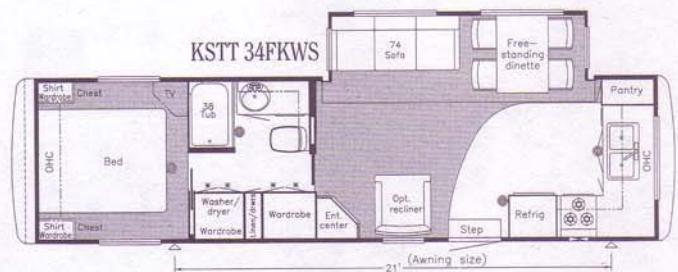
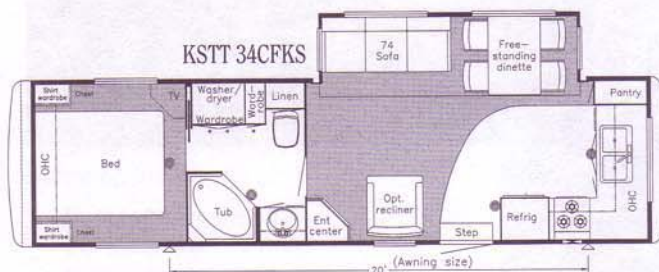
WINDOWS, AWNINGS & VENTS

- Awning-Front Recessed
- Radius Windows
- Step-Triple
- Vent-Power in Bath Area w/Wall Switch

BEDROOM FEATURE

- Bed Queen (60" x 75")

TRAVEL TRAILER FLOORPLANS



KOUNTRY STAR® TRAVEL TRAILER SPECIFICATIONS

Unit	No. Axles	Axle Cap	Tire	GAWR (lbs)	GVWR (lbs)	Length	Height	Width	Weight (lbs)	Hitch Weight (lbs)	Fresh Water Cap.	Grey Water Cap.	Sewage Water Cap.	Heating Capacity
KS TT 34 CFKS	2	6000	235-85-R 16E	6000	12000	34'-4"	11'	96"	8225	905	68 Gal.	84 Gal.	42 Gal.	35,000 btu
KS TT 34 FKWS	2	6000	235-85-R 16E	6000	12000	34'-9"	11'	96"	8258	908	68 Gal.	84 Gal.	42 Gal.	35,000 btu
KS TT 34 RDFB	2	6000	235-85-R 16E	6000	12000	34'-4"	11'	96"	8277	828	68 Gal.	84 Gal.	42 Gal.	35,000 btu
KS TT 34 WBRL	2	6000	235-85-R 16E	6000	12000	34'-4"	11'	96"	8277	828	68 Gal.	84 Gal.	42 Gal.	35,000 btu

Length, Heights, Widths, Dry Weights and Hitch Weights are Approximate. Weight will vary based on optional equipment added to the above base weight.

TRAVEL TRAILER STANDARD FEATURES

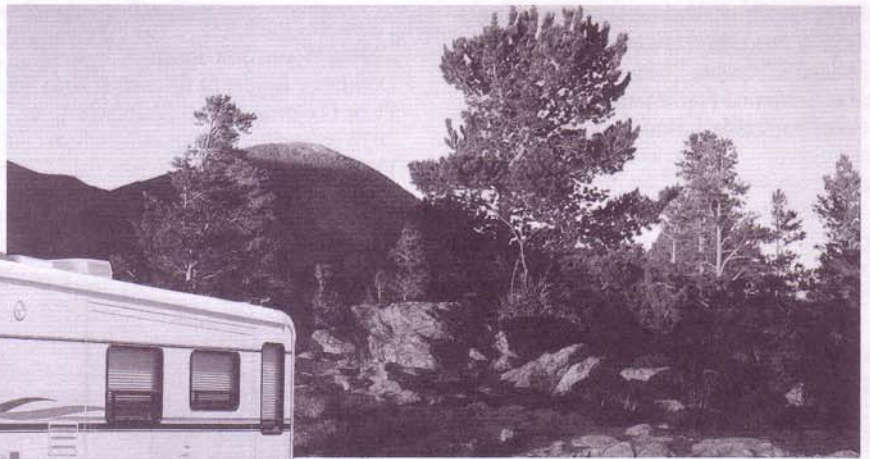
S P E C I F I C A T I O N S



1999 TRAVEL TRAILER



1999 FIFTH WHEEL



1999 CLASS A MOTORHOME





1999 TRAVEL TRAILER

1999 5TH WHEEL

1999 CLASS A MOTORHOME

Newmar® is proud to offer you the finest line of recreational vehicles available. Our tradition of designing and building quality recreational vehicles has long been recog-

nized along with the fact that our own participation in recreational vehicle living gives us the experience and knowledge to build superior products for our customers.

We appreciate your taking the time to look over our brochure and products at our authorized dealer showrooms. We sincerely hope you will become one of

our many happy customers who have learned that Newmar® is An American Tradition of Excellence.

Mahlon Miller
Chairman of the Board

We invite you to visit our state of the art production facility in Nappanee, Indiana.

Plant tours are offered at
10:00 a.m. and 1:00 p.m.,
Monday through Friday.

[Newmar Kountry Klub]

Don't forget to check out the Klub—the Newmar® Kountry Klub, that is. All you need for eligibility is to be a proud owner of any of the fine Newmar® recreational vehicles.



An American Tradition Of Excellence

355 N DELAWARE ST • PO BOX 30

NAPPANEE IN 46550-0030

PHONE 219 773-7791 • FAX 219 773-2895

<http://www.newmarcorp.com>



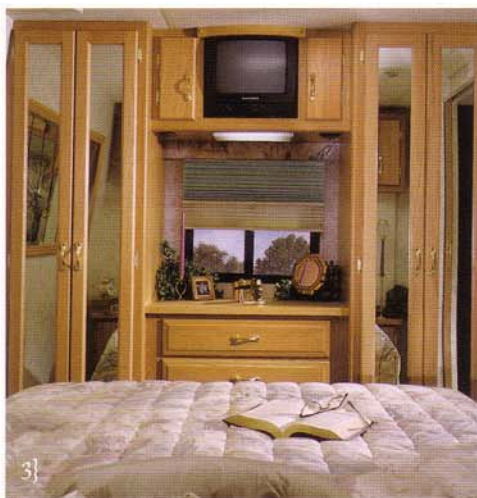
Compliments of:



PRIDE SHOWS IN EVERY CABINET WE BUILD



Our cabinet shop is a true source of Newmar pride in skilled craftsmanship, where each piece is created, on-site, by caring hands.



1} With the push of a button, your Kountry Star slideout will move quietly into place and provide a large, beautiful room with a flush flat floor. 2} Handcrafted night stands are conveniently positioned on each side of the walk-around, queen size bed. 3} The master

bedroom in the Kountry Star Class A boasts an abundance of cabinetry and a built-in area for your TV. 4} A well designed cab area is accented with our handcrafted cabinetry. A hurled woodgrain-like dash puts all your gauges and instruments in one easy-

to-see area. 5} The bath is arranged with well placed accommodations and makes optimum use of space. 6} The Kountry Star kitchen features Corian® countertops and a range with sealed burners and piezzo ignition. Note how we have taken registers out of the

floor to not only make your Kountry Star better looking, but also easier to take care of. 7} Our plush swivel recliners are the epitome of comfort. 8} The stylish dinette set adds an elegant touch to the dining area.





For more than 31 years, Newmar® has been hand-crafting exceptional recreational vehicles in Nappanee, Indiana, with the single goal of building the best products available. We have earned an enviable reputation for producing motorhomes with superior design construction and performance features. As

our company enters its 32nd year of business, Kountry Star® Motorhomes have never been a better value than they are right now. For 1999, you'll discover a Class A lineup built on a strong I-beam chassis and 101" widebody frame. It features our popular bus style front and sleek styling graph-

ics available in two colors.

Inside the Kountry Star® Class A you will find that you can choose from five luxurious interiors and two wood-grain choices - Light

Honeyed Oak and Snow Maple. With many popular models available, all feature the outstanding, patented flat-floor slideout as standard equipment.





1} You'll appreciate how Kountry Star's flat floor slideout makes this large area truly a room for living. The entertainment center was built to accept a large TV. 2} Beautiful cabinets

and matching window treatments, pillow and bedspread highlight the master bedroom. 3} The spacious living/dining room provides plenty of comfort in uncompromising style.



SIDEWALL STRENGTH A NEWMAR STANDARD



The welded aluminum sidewall construction is built with 16" on center framing, providing the strongest and most durable construction possible.



Truss-style rafters are built 16" on center and central air conditioning duct work is incorporated into the design.



Aluminum sidewalls are welded, not riveted, for added strength and are optional on the Kountry Star®. Insulated foam board and interior panels are both glued and screwed in place.



For over 31 years, people who love the recreational vehicle living experience have counted on Newmar®. Founded in 1967, Newmar® has become a legend to generations of satisfied customers. If you love spending your leisure time exploring the fun of RV living, it's almost certain you know someone who has owned a Newmar® product.

And, everything we've learned since 1967 about building quality and reliability has gone into making the 1999 Kountry Star® Travel Trailers our best ever. There are five outstanding interiors to choose from and two popular woodgrains - Light Honeyed Oak and Snow Maple - that perfectly match your interior. You will also find that our

patented flat floor slideout is now standard on all Kountry Star® Travel Trailers. See the Kountry Star® line-up at your local dealer - there are many popular floor plans to

select from to match your particular needs. On the outside, the 1999 Kountry Star® Travel Trailer sports exciting new graphics available in two colors.

