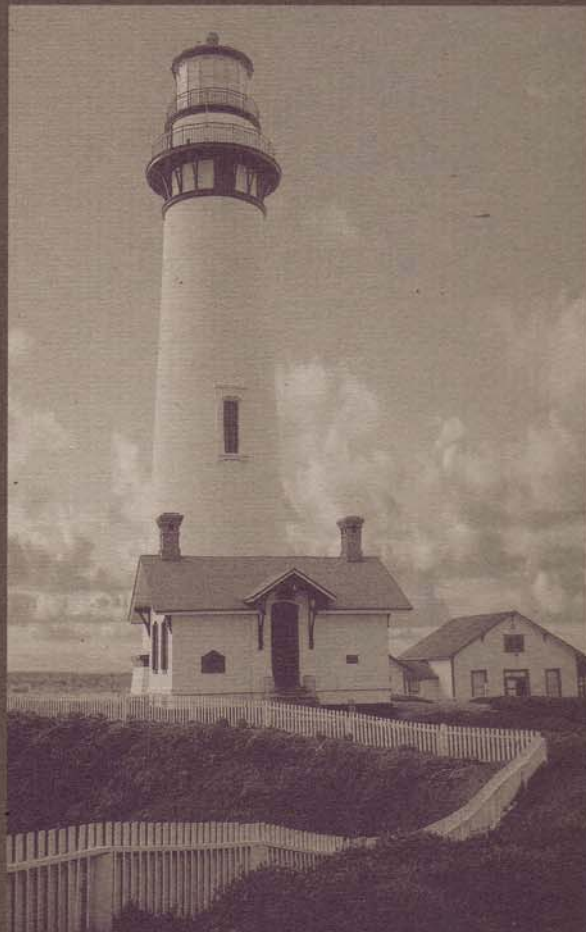


1 9 9 9

L O N D O N

A I R E



B Y N E W M A R



FIFTH WHEEL • DIESEL PUSHER • LUXURY COACH



1999 FIFTH WHEEL

1999 DIESEL PUSHER

1999 LUXURY COACH

Newmar is proud to offer the finest line of recreational vehicles available. Our tradition of designing and building quality recreational vehicles has long been recognized along with the

fact that our own participation in recreational vehicle living gives us the experience and knowledge to build superior products for our customers.

We appreciate the time you took in looking over our brochure and products at our authorized dealer showrooms. We sincerely hope you will become one of

our many happy customers who have learned that Newmar is An American Tradition of Excellence.

Mahlon Miller
 Mahlon Miller
 Chairman of the Board

We invite you to visit our state of the art production facility in Nappanee, Indiana.

Plant tours are offered at 10:00 a.m. and 1:00 p.m., Monday through Friday.



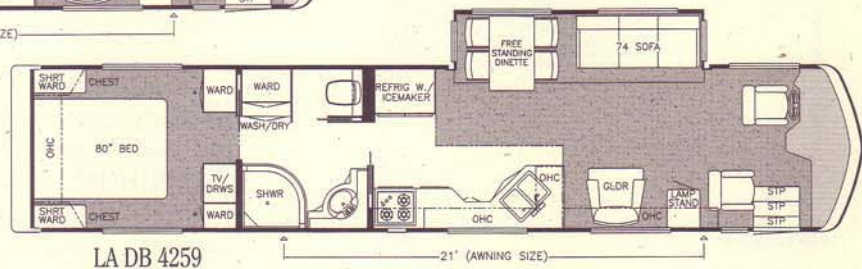
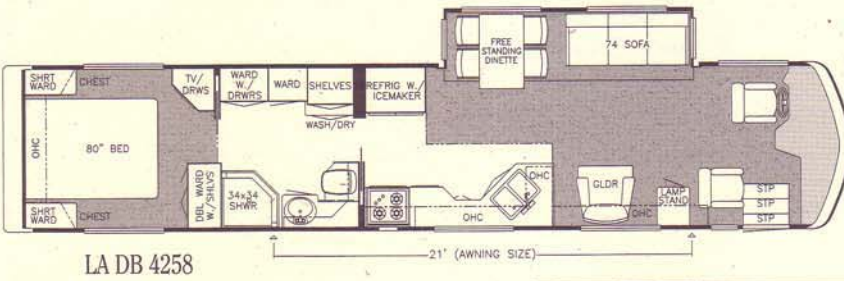
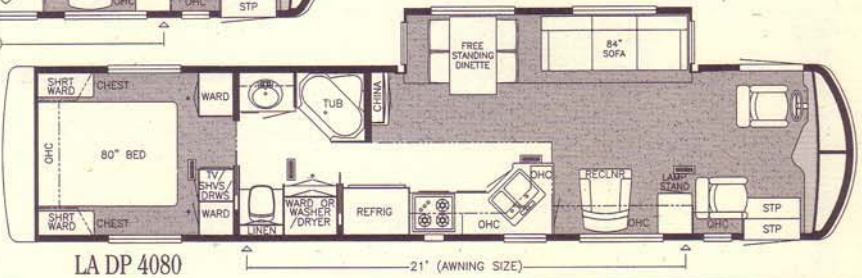
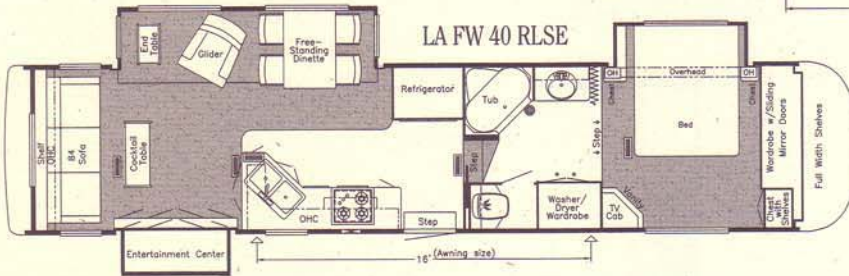
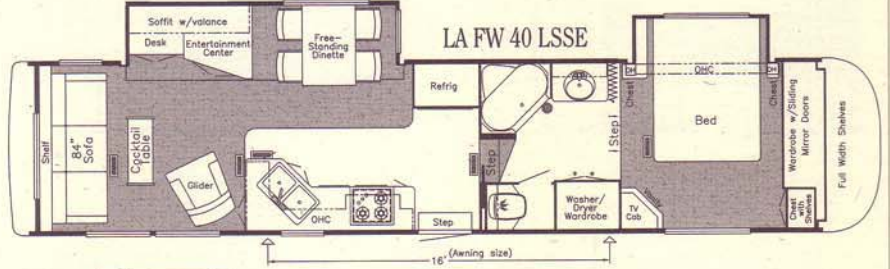
Don't forget to check out the Klub—the Newmar Kountry Klub, that is. All you need for eligibility is to be a proud owner of any of the fine Newmar recreational vehicles.

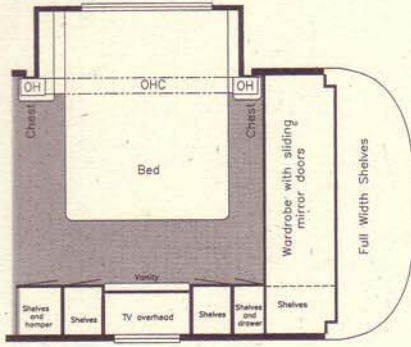


An American Tradition Of Excellence

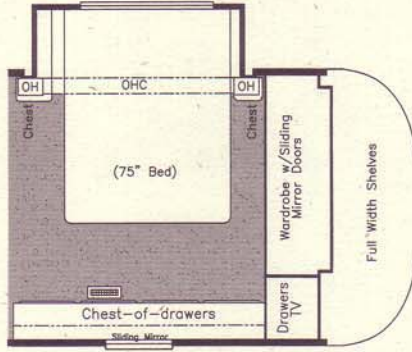
355 N DELAWARE ST • PO BOX 30
 NAPPANEE IN 46550-0030
 PHONE 219 773-7791 • FAX 219 773-2895
<http://www.newmarcorp.com>

Compliments of:

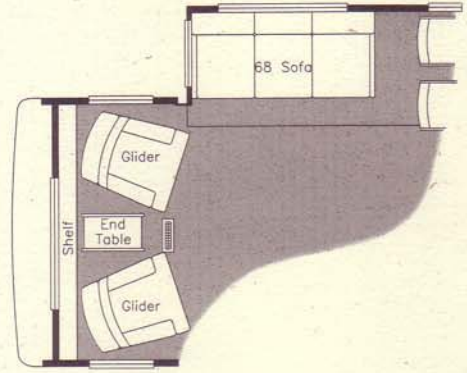




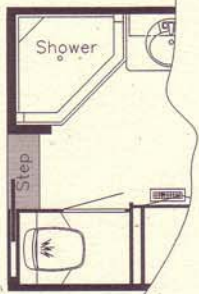
Option K460
Vanity Center in C/O
Available in:
LA FW 39KSWB, 40LSSE, 40RLSE



Option K890
Dresser Center in C/O
Available in:
LA FW 39KSWB, 40LSSE, 40RLSE



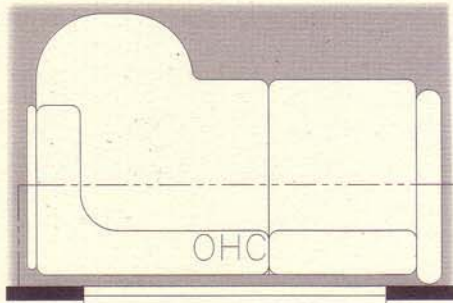
Option K805
Rear Recliners & 68" Sofa ilo Standard
Available in:
LA FW 40RLSE



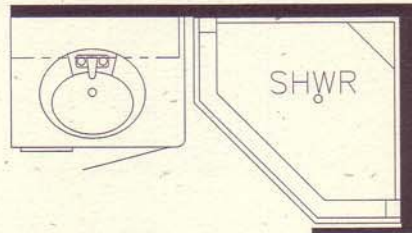
Option P092
38" Corner Shower ilo Tub
Available in:
LA FW 40LSSE, 40RLSE



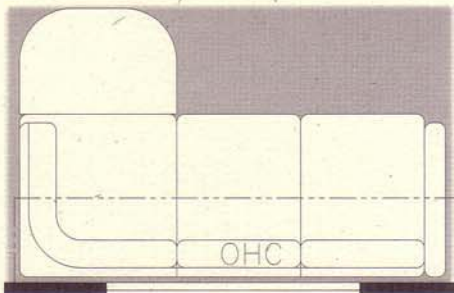
Option P161
Unenclosed Stool Room
Available in:
LA FW 40LSSE, 40RLSE



Option K912
L-Sofa 66" Leather w/Incliner
Available in:
All LA DP



Option P210
38" Corner Shower ilo Tub
Available in:
LA DP 4080



Option K810
L-Lounge Sofa 81" Leather w/Incliner
Available in:
All LA DB

Prices, specifications, and floorplans are subject to change at Newmar's discretion without prior written notice or obligation. Some floorplans may show optional chairs or end tables. See dealer for availability.

OPTIONAL FEATURES

APPLIANCES & ACCESSORIES

- Icemaker U Line in Place of Icemaker in the Refrigerator (not available on 4057)52 lbs.
- PathMaster Navigation System8 lbs.
- Refrigerator Dometic Side-By-Side 1292 w/Compressor Icemaker (12 cu. ft.).....47 lbs.
- Washer/Dryer Sears in Place of Standard (in full length cabinet)232 lbs.

CABINETS & FURNITURE

- Cabinetry Frosted Maple Hardwood0 lbs.
- Cabinetry Oak Hardwood.....0 lbs.
- Sofa Flexsteel Cloth w/Dual

CABINETS & FURNITURE (CONT.)

- Incliners & Snack Tray in Place of Standard Sofa95 lbs.
- Sofa Flexsteel L-Lounge Cloth w/Incliner & Ottoman in Place of Recliner & Lamp Stand50 lbs.
- Sofa Flexsteel L-Lounge Leather/Vinyl w/Incliner & Ottoman in Place of Recliner & Lamp Stand50 lbs.
- Sofa Flexsteel Leather/Vinyl w/Dual Incliners & Snack Tray in Place of Standard Sofa100 lbs.

ELECTRICAL FEATURES

- Generator 10.0 KW Onan (diesel) Quiet Series in Place of Standard
- Surge Protector (120V).....3 lbs.

INTERIOR FEATURES

- Window Treatment Hardwood Shadow Boxes30 lbs.

PLUMBING/BATH FEATURES

- Water Filter (for entire unit)6 lbs.

WINDOWS, AWNINGS & VENTS

- Awning-At Front Entrance Door Carefree12 lbs.

LONDON AIRE®
LUXURY COACH
SIZES & CAPACITIES

Model	LB4258	LB4259
Approx. Overall Length	43'-0"	43'-0"
Overall Width	101"	101"
Approx. Overall Height	12'-6"	12'-6"
Interior Width	95 1/2"	95 1/2"
Interior Height	82"	82"
Grey Tank	65 Gal.	65 Gal.
Sewage Tank	45 Gal.	45 Gal.
Water Tank	110 Gal.	110 Gal.
L/P Tank	42 Gal.	42 Gal.
Furnace BTU	50,000	50,000

Length, Heights, Widths and Dry Weights are Approximate. Weight will vary based on optional equipment added to the above base weight.

LONDON AIRE®
LUXURY COACH
SPARTAN CHASSIS SPECIFICATIONS

Model	LB4258	LB4259
Chassis	Spartan K2	Spartan K2
Engine	450	450
Axle Ratio	4.11	4.11
Fuel Capacity (Gal)	150	150
Wheel Base	286"	286"
Front GAWR (lbs)	13,200	13,200
Rear GAWR	23,000	23,000
GVWR (lbs)	36,200	36,200
GCWR (lbs)	46,200	46,200
Approx. Unloaded Vehicle Wt. (lbs)	33,850	33,730
Approx. Net Carrying Capacity (lbs)	2,350	2,470

Length, Heights, Widths and Dry Weights are Approximate. Weight will vary based on optional equipment added to the above base weight.

STANDARD FEATURES

AIR CONDITIONING & HEATING

- Air Conditioner Central Duo-Therm Basement Model 27M BTU
- Aqua Hot Hydronic Zone Heating System
- Dash Air Conditioning w/Independent Settings for Drive & Passenger

APPLIANCES & ACCESSORIES

- Air Horn
- Cable TV Connection
- Carbon Monoxide Detector
- CB Radio
- CD Player-Remote 10 Disc Changer w/Amplifier & Subwoofer
- Cellular Telephone Antenna
- Coffee Maker
- Color TV-19" (in bedroom)
- Color TV-27" (in dash overhead)
- Freezer 100# Norcold AC/DC (on slides) in Exterior Storage Compartment
- LP Leak Detector
- Microwave Oven Convection 30"
- Portable Vacuum
- Range Cover Bifold Corian
- Range Recessed Princess 3-Burner Hot Plate
- Rear View Color Monitor System
- Refrigerator Dometic Side-By-Side 7832 w/Absorption IceMaker (10 cu. ft.)
- Refrigerator Front Framed Hardwood Raised Panel
- Safe
- Satellite Dish (Daytron) w/Automatic System & DSS Receiver
- Security System
- Speaker Switch System (between dash area TV & stereo)
- Stereo AM/FM Cassette with Clock (bedroom)
- Stereo AM/FM Cassette w/Clock (in dash)
- Surround Sound System
- Telephone Connection w/2 Phone Jacks
- TV Antenna w/Power Booster & 2 Jacks (low profile)
- TV Jack for Exterior Use on Door Side
- VCR-4 Head HI-FI
- Washer/Dryer Compact One Piece
- Water Heater 10 Gal. Gas/Electric, Direct Spark Ignition & Engine Assist

CABINETS & FURNITURE

- Cabinetry Cherry Hardwood w/Raised Panel Cathedral Doors (unitized construction)
- Cedar Paneling on Side Wall of One Wardrobe
- Chair Flexsteel Large Free Standing Recliner w/Headrest, Leather/Vinyl
- Corian Countertop w/Integrated Corian Sink Bowls in Kitchen
- Corian Countertop w/Decorative Inlay & Integrated Corian Lavatory Bowl in Bath
- Dinette Table w/Corian Top & Four Upholstered Chairs
- Drawers w/Dove Tail Sides & Metal Guides
- Front Seat 6-Way Power, Swivel/Recline & Ergo-Flex Leveling Arm System on Passenger's
- Front Seat Flexsteel Leather/Vinyl w/Pneumatic Power Lumbar Support & Air Ride on Driver's

CABINETS & FURNITURE (CONT.)

- Molded Silverware Divider Tray
- Positive Catches & Knife Hinges on Cabinet Doors
- Sofa Flexsteel Magic Bed Leather/Vinyl

CHASSIS FEATURES

- Chassis-Spartan K2 450 HP w/Independent Front Suspension
- Air Brakes w/Automatic Slack Adjuster Front & Rear
- Anti-Lock Braking System
- Back-Up Alarm
- Cruise Control
- Dash Heater/Air Conditioner High Output
- Engine Jake Brake
- Recessed Fuel Fill w/Locking Door (one on each side)
- Steering Wheel Tilt & Telescope
- Wheels Polished Aluminum

ELECTRICAL FEATURES

- Battery (6 - 6V)
- Battery Disconnect (for house battery)
- Electrical Service 50 AMP w/Remote Controlled Power Rewind for Cord
- Energy Management System
- Generator 10.0 KW Power Tech (diesel) Quiet Series on Power Activated Slides w/Automatic Changeover
- Inverter/Converter (Heart Freedom 25)
- Light Spot w/Remote Control
- Lights Cornering Assistance
- Lights Daytime Headlight System
- Lights Docking
- Lights Driving
- Lights Exterior Security (two on each side)
- Lights Fluorescent in Exterior Storage Compartments w/Automatic Switches
- Lights in Kitchen Base Cabinet Toe Kick Area & Shadow Boxes
- Lights in Wardrobes w/Automatic Switches
- Lights Interior Courtesy
- Midship Side Turn Signals
- Recept 110V w/Ground Fault Interrupter (interior & exterior)
- Solar Panel 5 Watt to Charge Chassis Battery
- Switch for Emergency Chassis Engine Start
- Switch Recept for Engine Block Heater

EXTERIOR FEATURES

- Convex Exterior Chrome Mirrors Flat & Convex w/Remote Control & Defrost (front)
- Exterior Compartment Doors w/Power Locks
- Exterior Front & Rear Gel-Coated Fiberglass End Caps
- Exterior Sides Seamless Gel-Coated Fiberglass
- Front End Protective Vinyl Mask
- Hitch for Towing Car (w/2 extra 14 gauge wires for customer use) (class-2, 5000# rating)
- Jacks Hydraulic Leveling w/Automatic Control & Air Dump
- Mud Flaps (front & rear)
- Painted Exterior Graphics w/Clear Coat Finish
- Pull-Out Storage Trays in Exterior Compartments
- Rear Protective Tow Guard

EXTERIOR FEATURES (CONT.)

- Slideout Large w/Patented Flat Floor (see floorplans for availability & layout)
- Slideout One Piece Molded Fiberglass Exterior
- Undercoating

INTERIOR FEATURES

- Ceiling Seamless Padded Vinyl
- Decorative Afghan
- Designer Kitchen Area Rug
- Floor Covering-Carpet, 55 oz. 100% Nylon Ultra-Plush Sculptured Saxony
- Floor Covering-Ceramic Tile in Bath & Kitchen Area
- Hardwood Fascia on Slideout
- Raised Panel Interior Passage Doors
- Sink Covers-(2)
- Smoke Detector & 10 BC Fire Extinguisher
- Sun Shade on Driver & Passenger Side Window
- Wall Covering-Color Coordinated Wall Paper
- Window Treatment Lined Day/Night Pleated Shades & Shadow Boxes
- Window Treatment Mini Blinds (kitchen)

PLUMBING/BATH FEATURES

- Bath Accessories Brass (1 each-towel bar, tissue holder, towel ring & robe hook)
- Exterior Convenience Wash Station (hot/cold water, soap & towel dispenser)
- Faucet for Kitchen Sink Single Handle w/Pull-Out Spout (Moen)
- Faucet for Shower & Lavatory Single Handle (Moen)
- Monitor Panels (interior & exterior)
- Sewage Holding Tank Rinse
- Tub/Shower Fiberglass w/Enclosure
- Water Filter w/Drink Dispenser (kitchen)
- Water Hose w/Automatic Rewind & City Water Hook-Up
- Winterize Convenience Package (w/water heater bypass)

CONSTRUCTION FEATURES

- Insulation Fiberglass R7 Sidewalls & Floor R19 Roof
- Insulation Foam 5/8" Laminated in Sidewalls & Ceiling
- Structure-101" Widebody
- Structure-Aluminum Sidewalls & Roof, 16" On Center

WINDOWS, AWNINGS & VENTS

- Awning-Side Carefree Spirit w/Remote Control
- Awning-Slideout Cover Carefree (w/full view window awning)
- Awning-Window Carefree Spirit Limited (on bedroom)
- Door Bell
- Front Entry Door w/Air Powered Flush Stepwell Cover & Keyless Lock
- Radius Windows w/Double Pane Dark Tinted Safety Glass (not available on driver/passenger)
- Step-Automatic Double
- Vent-Fantastic w/Rain Sensor in Bath

BEDROOM FEATURES

- Comforter Quilted w/Matching Sham & Accent Pillow

OPTION FEATURES

<p>APPLIANCES & ACCESSORIES WT.</p> <ul style="list-style-type: none"> • Icemaker U Line in Place of Icemaker in the Refrigerator 52 lbs. • PathMaster Navigation System (specify one regional data base) 8 lbs. • Refrigerator Dometic Side-By-Side 1292 w/Compressor Icemaker (12 cu. ft.) 47 lbs. • Surround Sound 5 lbs. 	<p>CABINETS & FURNITURE (cont.)</p> <ul style="list-style-type: none"> • Sofa Flexsteel L-Lounge Leather/Vinyl w/Incliner in Place of Recliner & Lamp Stand 50 lbs. • Sofa Flexsteel Leather/Vinyl w/Dual Incliners & Snack Tray in Place of Standard Sofa • Sofa Flexsteel Magic Bed Leather/Vinyl in Place of Standard Sofa 10 lbs. • Sofa Flexsteel w/Dual Incliners & Snack Tray in Place of Standard Sofa 	<p>INTERIOR FEATURES</p> <ul style="list-style-type: none"> • Window Treatment Hardwood Shadow Boxes..... 30 lbs.
<p>CABINETS & FURNITURE</p> <ul style="list-style-type: none"> • Cabinetry Frosted Maple Hardwood 0 lbs. • Cabinetry Oak Hardwood 0 lbs. • Chair Flexsteel Large Free Standing Recliner Leather/Vinyl in Place of Standard Chair 27 lbs. • Full Length Wardrobe in Place of Wardrobe/Washer Dryer Cabinet 0 lbs. 	<p>ELECTRICAL FEATURES</p> <ul style="list-style-type: none"> • Generator 7.5 KW Onan (diesel) Quiet Series in Place of Power Tech 25 lbs. • Surge Protector (120V) 3 lbs. 	<p>PLUMBING/BATH FEATURES</p> <ul style="list-style-type: none"> • Shower Corner (available on 480, 4082) -10 lbs. • Water Filter (for entire unit) 6 lbs.
	<p>EXTERIOR FEATURES</p> <ul style="list-style-type: none"> • Front End Protective Vinyl Mask 35 lbs. 	<p>WINDOWS, AWNINGS & VENTS</p> <ul style="list-style-type: none"> • Awning - At Front Entrance Door Carefree 12 lbs. • Radius Windows w/Double Pane Dark Tinted Safety Glass (not available on driver/passenger area) 93 lbs.

LONDON AIRE® DIESEL PUSHER SPARTAN CHASSIS SPECIFICATIONS

Model	LP4080	LP4082
Chassis	Spartan M/M	Spartan M/M
Engine	CUM 350	CUM 350
Axle Ratio	4.78	4.78
Fuel Capacity (Gal)	150	150
Wheel Base	276"	276"
Front GAWR (lbs)	13,200	13,200
Rear GAWR (lbs)	19,000	19,000
GVWR (lbs)	32,200	32,200
GCWR (lbs)	42,000	42,000
Approx. Unloaded Base Wt. (lbs)	27,780	27,780
Approx. Net Carrying Capacity (lbs)	4,420	4,420

Length, Heights, Widths and Dry Weights are Approximate. Weight will vary based on optional equipment added to the above base weight.

LONDON AIRE® DIESEL PUSHER SIZES & CAPACITIES

Model	LP4080	LP4082
Approx. Overall Length	40'-8"	40'-8"
Overall Width	101"	101"
Approx. Overall Height	12'-2"	12'-2"
Interior Width	93"	93"
Interior Height	78"	78"
Grey Tank	65 Gal.	65 Gal.
Sewage Tank	45 Gal.	45 Gal.
Water Tank	105 Gal.	105 Gal.
L/P Tank	42 Gal.	42 Gal.
Furnace BTU	40,000	40,000

Length, Heights, Widths and Dry Weights are Approximate. Weight will vary based on optional equipment added to the above base weight.

STANDARD FEATURES

AIR CONDITIONING & HEATING

- Air Conditioner Central Penguin 13.5M BTU w/Heat Pump (2)
- Dash Air Conditioning w/Independent Settings for Driver & Passenger
- Heat In Floor Ducted

APPLIANCES & ACCESSORIES

- Air Horn
- Cable TV Connection
- Carbon Monoxide Detector
- CB Radio
- CD Player-Remote 10 Disc Changer w/Amplifier & Subwoofer
- Cellular Telephone Antenna
- Coffee Maker
- Color TV-19" (in bedroom)
- Freezer 100# Norcold AC/DC (on slides in Exterior Storage Compartment)
- LP Leak Detector
- Microwave Oven Convection 30"
- Plasmavision 21" Flat Screen Color TV (under dash overhead w/power lift)
- Portable Vacuum
- Range Cover Bifold Corian
- Range Recessed Princess 3-Burner Hot Plate
- Rear View Color Monitor System
- Refrigerator Dometic Side-By-Side 7832 w/Absorption Icemaker (10 cu. ft.)
- Refrigerator Front Framed Hardwood Raised Panel
- Safe
- Satellite Dish (Winegard) w/Automatic Seeking System (does not include DSS receiver)
- Security System
- Stereo AM/FM Cassette w/Clock (bedroom)
- Stereo AM/FM Cassette w/Clock (in dash)
- Telephone Connection w/2 Phone Jacks
- TV Jack for Exterior Use on Door Side
- VCR-4 Head Stereo
- Washer/Dryer Compact One Piece
- Water Heater Instant Recovery

CABINETS & FURNITURE

- Cabinetry Cherry Hardwood w/Raised Panel Cathedral Doors (unitized construction)
- Cedar Paneling on Side Wall of One Wardrobe
- Chair Flexsteel High Back Recliner w/Headrest Leather/Vinyl
- Corian Countertop w/Integrated Corian Sink Bowls in Kitchen
- Corian Countertop w/Integrated Corian Lavatory Bowl in Bath
- Dinette Table w/Corian Insert Top & Four Upholstered Chairs
- Drawers w/Dove Tail Sides & Metal Guides
- Front Seats 8-Way Power Lumbar & Ergo-Flex Leveling Arm System
- Front Seats Flexsteel Swivel/Recline w/Integrated Seat Belt
- Molded Silverware Divider Tray
- Positive Catches & Knife Hinges on Cabinet Doors
- Sofa Flexsteel Magic Bed

CHASSIS FEATURES

- Chassis-Spartan Mountain Master 350 HP Raised Rail w/Independent Front Suspension
- Air Brakes w/Automatic Slack Adjuster Front & Rear
- Anti-Lock Braking System
- Back-Up Alarm
- Cruise Control
- Dash Heater/Air Conditioner High Output
- Engine Exhaust Brake
- Recessed Fuel Fill w/Locking Door (one on each side)
- Steering Wheel Tilt & Telescope
- Wheels Polished Aluminum

ELECTRICAL FEATURES

- Battery (4-6V) on Pull-Out Tray
- Battery Disconnect (for house battery)
- Electrical Service 50 AMP w/Power Rewind for Cord
- Energy Management System
- Generator 7.0 KW Power Tech (diesel) Quiet Series on Slides w/Automatic Changeover
- ICC Light Flasher Switch
- Inverter/Converter (Heart Freedom 20)
- Light Spot w/Remote Control
- Lights Daytime Headlight System
- Lights Docking
- Lights Driving
- Lights Exterior Security (2 on each side)
- Lights in Kitchen Base Cabinet Toe Kick Area & Shadow Boxes
- Lights in Wardrobes w/Automatic Switches
- Lights Interior Courtesy
- Midship Side Turn Signals
- Receipts 110V w/Ground Fault Interrupter (interior & exterior)
- Solar Panel 5 Watt to Charge Chassis Battery
- Switch for Emergency Chassis Engine Start
- Switched Receipt for Engine Block Heater

EXTERIOR FEATURES

- Convex Exterior Chrome Mirrors w/Remote Control & Defrost
- Exterior Front & Rear Gel-Coated Fiberglass End Caps w/Integrated Entrance Doors
- Exterior Sides Seamless Gel-Coated Fiberglass
- Hitch for Towing Car (w/2 extra 14 Gauge wires for customer use) (class-2, 5000# rating)
- Jacks Hydraulic Leveling w/Automatic Control
- Mud Flaps (front & rear)
- Painted Exterior Graphics w/Clear Coat Finish
- Pull-Out Storage Trays in Exterior Compartments
- Rear Protective Tow Guard
- Seamless Molded Roof & Top Wrap Gel-Coated Fiberglass
- Slideout Large w/Patented Flat Floor (see floorplans for availability & layout)
- Slideout One Piece Molded Fiberglass Exterior
- Undercoating

INTERIOR FEATURES

- Ceiling Padded Vinyl w/Mood & Direct Lighting in Recessed Hardwood Paneled Feature Areas

INTERIOR FEATURES (CONT.)

- Designer Kitchen Area Rug
- Floor Covering-Carpet Staintech, 55 oz. 100% Nylon Ultra-Plush Sculptured Saxony w/Scotchguard Stain Release
- Floor Covering-Ceramic Tile in Bath & Kitchen Area
- Hardwood Fascia on Slideout
- Raised Panel Interior Passage Doors
- Sink Covers-(2)
- Smoke Detector & 10 BC Fire Extinguisher
- Sun Shade on Driver & Passenger Side Window
- Wall Covering-Color Coordinated Wall Paper
- Window Treatment Lined Day/Night Pleated Shades & Shadow Boxes
- Window Treatment Mini Blinds (kitchen)

PLUMBING/BATH FEATURES

- Bath Accessories Brass (1 each-towel bar, tissue holder, towel ring & robe hook)
- Faucet for Kitchen Sink Single Handle w/Pull-Out Spout (Moen)
- Faucet for Shower & Lavatory Single Handle (Moen)
- Monitor Panel
- Sewage Holding Tank Rinse
- Tub/Shower Fiberglass w/Enclosure
- Water Filter w/Drink Dispenser (kitchen)
- Water Hose w/Automatic Rewind & City Water Hook-Up
- Winterize Convenience Package (w/water heater bypass)

CONSTRUCTION FEATURES

- Insulation Fiberglass R7 Sidewalls & Floor R19 Roof
- Insulation Foam 5/8" Laminated in Sidewalls & Ceiling
- Structure-101" Widebody
- Structure-Aluminum Sidewalls & Roof, 16" On Center
- Structure-Contoured Sidewalls

WINDOWS, AWNINGS & VENTS

- Awning-Side Carefree Spirit Limited
- Awning-Slideout Cover Carefree (w/full view window awning)
- Awning-Window Carefree Spirit Limited (on bedroom)
- Door Bell
- Door Driver's Side w/Power Window & Keyless Lock
- Front Entry Door w/Air Powered Flush Stepwell Cover, Power Window & Keyless Lock
- Radius Windows w/Dark Tinted Safety Glass
- Skylight in Bathroom w/Soft Shade
- Step-Automatic Double
- Vent-Fantastic w/Rain Sensor in Bath
- Vent-Fantastic, Vented Through Central Air Duct

BEDROOM FEATURES

- Comforter Quilted w/Matching Sham & Accent Pillow
- Lifts for Convenient Storage Under Fixed Beds

OPTIONAL FEATURES

APPLIANCES & ACCESSORIES WT.

- Dishwasher (available on 39 KSWB) 75 lbs.
- Home Theater System in Place of Standard Stereo-29 lbs.
- Icemaker U Line 57 lbs.
- Satellite Dish (Winegard) w/Automatic Seeking System (does not include DSS receiver)..... 70 lbs.
- Satellite Dish (Winegard) w/Manual System (does not include DSS receiver) 13 lbs.
- Security System..... 2 lbs.
- Telephone Jack Interior, Extra 1 lbs.
- TV Jack, Extra 1 lbs.
- Washer/Dryer Compact One Piece..... 185 lbs.
- Washer/Dryer Prep 22 lbs.
- Washer/Dryer Sears..... 232 lbs.

CABINETS & FURNITURE

- Cabinetry Frosted Maple Hardwood 0 lbs.
- Cabinetry Oak Hardwood 0 lbs.
- Dinette Table Hidden Leaf in Place of Free Standing Table 50 lbs.
- Entertainment Center w/No Decorative Glass, Mirrors, Clear Shelving or Lights..... 30 lbs.
- Rear Recliners & 68" Hide-A-Bed Sofa in Place of Standard Sofa (available on 40 RLSE) 37 lbs.
- Sofa Flexsteel Hide-A-Bed Leather/Vinyl in Place of Standard Sofa (available on 39 KSWB) 10 lbs.

CABINETS & FURNITURE (CONT.)

- Sofa Flexsteel Leather/Vinyl w/Dual Incliners & Snack Tray in Place of Standard Sofa (available on 40 LSSE, RLSE) 100 lbs.
- Sofa Flexsteel Magic Bed Leather/Vinyl in Place of Standard Sofa (available on 40 LSSE, RLSE) 10 lbs.
- Sofa Flexsteel w/Dual Incliners & Snack Tray in Place of Standard Sofa (available on 40 LSSE, RLSE)

CHASSIS FEATURES

- Suspension Independent MOR/ryde

ELECTRICAL FEATURES

- Generator 5.5 KW Onan Marquis w/Automatic Changeover & Battery 297 lbs.
- Generator Gas Tank 5 lbs.
- Generator Prep (automatic changeover & carbon monoxide detector) 1 lbs.
- Recept 110V 1 lbs.
- Recept 12V 1 lbs.
- Solar Prep (12V wire from roof to battery compartment) 1 lbs.
- Surge Protector (120V)..... 3 lbs.

EXTERIOR FEATURES

- Hitch Plate & Bracket 21000# 0# lbs.
- Jacks Stabilizers A & E Power Twins in Place of Standard (two pair)..... 40#

PLUMBING/BATH FEATURES

- Assist Handle in Tub/Shower 2 lbs.
- Heat Pads for Holding Tanks 110V 3 lbs.
- Shower Corner (available on 40 LSSE, RLSE) 10 lbs.
- Stool Room Unenclosed (available on 40 LSSE, RLSE) -27 lbs.
- Water Filter (for entire unit) 6 lbs.

WINDOWS, AWNINGS & VENTS

- Awning-Side Tension Rafter (shipped loose)..... 5 lbs.
- Awning-Window Carefree Spirit Limited (only off door side) 5 lbs.
- Radius Windows w/Double Pane Dark Tinted Safety Glass 110 lbs.
- Vent-Fantastic w/Rain Sensor 11 lbs.
- Vent-Fantastic w/Rain Sensor in Place of Standard Bath Vent 11 lbs.
- Vent-Fantastic w/Rain Sensor, Vented Through Central Air Duct 11 lbs.

LONDON AIRE® FIFTH WHEEL SPECIFICATIONS

Unit	No. Axles	Axle Cap (lbs)	Tire	GAWR (lbs)	GVWR (lbs)	Length	Height	Width	Weight (lbs)	Hitch Weight (lbs)	Fresh Water Cap.	Grey Water Cap.	Sewage Water Cap.	Heating Capacity
LA FW 39 KSWB	2	10000	215-85-R 16D	8600	19000	39'-3"	12'-4"	101"	16526	2479	75 Gal.	100 Gal.	50 Gal.	55,000 btu
LA FW 40 LSSE	2	10000	215-85-R 16D	8600	19000	40'-11"	12'-4"	101"	16500	2475	75 Gal.	100 Gal.	50 Gal.	55,000 btu
LA FW 40 RLSE	2	10000	215-85-R 16D	8600	19000	40'-11"	12'-4"	101"	16384	2785	75 Gal.	100 Gal.	50 Gal.	55,000 btu

Length, Heights, Widths, Dry Weights and Hitch Weights are Approximate. Weight will vary based on optional equipment added to the above base weight.

STANDARD FEATURES

AIR CONDITIONING & HEATING

- Air Conditioner Central Penguin 13.5M BTU w/Heat Pump (2)
- Heat In Floor Ducted
- LP Gas Bottles 2-30# w/Automatic Regulator - On Slides

APPLIANCES & ACCESSORIES

- Cable TV Connection
- Ceiling Fan (in living area)
- Cellular Telephone Antenna
- Coffee Maker
- Color TV 13" AC (available in some bedrooms)
- Color TV-32"
- LP Leak Detector
- Microwave Oven Convection 30"
- Portable Vacuum
- Range Cover Bifold Corian
- Range Recessed Princess 3-Burner Hot Plate
- Refrigerator Dometic Side-By-Side 1282 w/Icemaker (12 cu. ft.)
- Refrigerator Front Framed Hardwood Raised Panel
- Safe
- Satellite Dish Prep Only - w/RG 6 Coaxial, Phone/TV Jack & 110V Recept
- Stereo AM/FM Cassette w/Clock
- Telephone Connection w/1 Phone Jack
- TV Antenna w/Power Booster & 2 Jacks
- TV Jack for Exterior Use on Door Side
- VCR-4 Head Stereo
- Water Heater 10 Gal. Gas/Electric w/Direct Spark Ignition

CABINETS & FURNITURE

- Cabinetry Cherry Hardwood w/Raised Panel Cathedral Doors
- Cedar Paneling on Side Wall of One Wardrobe
- Chair End Table w/Bevelled Glass Top & Fluted Legs
- Chair, Flexsteel Swivel Glider/Recliner - Leather/Vinyl (1 in 40 LSSE, RLSE) (2 in 39 KSWB)
- Corian Countertop w/Integrated Corian Sink Bowls in Kitchen
- Corian Countertop w/Integrated Corian Lavatory Bowl in Bath
- Dinette Table w/Extension Top & Four Upholstered Chairs (available on 39 KSWB)
- Dinette Table w/Glass Top, Fluted Legs & Four Upholstered Chairs (not available on 39 KSWB)
- Drawers w/Dove Tail Sides & Metal Guides
- Lazy Susan in Kitchen Overhead Cabinet (not available on 39 KSWB)
- Molded Silverware Divider Tray
- Positive Catches & Knife Hinges on Cabinet Doors
- Pull-Out Pantry (available on 39 KSWB)

CABINETS & FURNITURE (CONT.)

- Sofa Cocktail Table w/Bevelled Glass Top & Fluted Legs
- Sofa Flexsteel Hide-A-Bed (available on 39 KSWB)
- Sofa Flexsteel Magic Bed (available on 40 LSSE, RLSE)

CHASSIS FEATURES

- Frame Size 16" I-Beam & Fiberglass Wrap Maximum Storage
- Skid Bars for Rear Bottom Protection
- Spare Tire
- Tandem Axle Dual Wheels w/Torflex Suspension
- Wheel Simulators-Stainless Steel

ELECTRICAL FEATURES

- Battery (2-6V)
- Battery Disconnect Switch
- Converter 75 AMP w/Charger
- Electrical Service 50 AMP w/Detachable Cord
- Lighting Fluorescent Recessed in Ceiling & Overhead Cabinets
- Lights Exterior Security (two on each side)
- Lights in Exterior Storage Compartments w/Automatic Switches
- Lights in Wardrobes w/Automatic Switches
- Lights Interior Courtesy
- Recepts 110V w/Ground Fault Interrupter (interior & exterior)

EXTERIOR FEATURES

- Cover to Conceal Pin Box
- Exterior Front & Rear Gel-Coated Fiberglass End Caps
- Exterior Front Gooseneck Area One Piece Molded Fiberglass
- Exterior Sides Seamless Gel-Coated Fiberglass
- Exterior Storage in Rear Cap
- Jacks Stabilizer (two pair)
- Roof & Top Wrap Gel-Coated Fiberglass w/1/4" Foam Insulation
- Roof Rack, Handrails & Molded Recessed Steps in Rear Cap
- Slideout Large w/Patented Flat Floor (see floorplans for availability & layout)
- Snaps for Fifth Wheel Jacks
- Storage Drawer in Front Compartment Area

INTERIOR FEATURES

- Ceiling Padded Vinyl
- Decorative Border in Bath Area, Grooved Bevelled Mirrors in Kitchen Area
- Designer Kitchen Area Rug
- Floor Covering-Carpet Staintech, 55 oz. 100% Nylon Ultra-Plush Sculptured Saxony w/Scotchguard Stain Release
- Floor Covering-Ceramic Tile in Bath Area
- Floor Covering-Ceramic Tile in Kitchen & Foyer Area
- Hardwood Fascia on Living Area Slideout
- Raised Panel Interior Passage Doors

INTERIOR FEATURES

- Raised Panel Wainscoting & Grooved Bevelled Mirror in Feature Areas
- Sink Covers (2)
- Smoke Detector & 5 BC Fire Extinguisher
- Wall Covering-Color Coordinated Wall Paper
- Window Garnish-Residential Style (not available w/double pane window option)
- Window Treatment Lined Day/Night Pleated Shades & Lamberquins

PLUMBING/BATH FEATURES

- Bath Accessories Brass (1 each-towel bar, tissue holder, towel ring & robe hook)
- Faucet for Kitchen Sink Single Handle w/Pull-Out Spout (Moen)
- Faucet for Shower & Lavatory Single Handle (Moen)
- Gate Valve Drain on Fresh Water Tank
- Monitor Panel
- Sewage Holding Tank Rinse
- Tub/Shower Fiberglass w/Enclosure
- Tub/Shower Wall Light
- Water Filter w/Drink Dispenser (kitchen)
- Winterize Convenience Package (w/water heater bypass)

CONSTRUCTION FEATURES

- Insulation Fiberglass R7 Sidewalls, R19 Floor & Roof
- Insulation Foam 5/8" Laminated in Sidewalls & Ceiling
- Structure-101" Widebody
- Structure-Aluminum Sidewalls & Roof, 16" On Center
- Structure-Contoured Sidewalls
- Underbelly Enclosed Aluminum w/Laminated 5/8" Foam

WINDOWS, AWNINGS & VENTS

- Awning - Rear Recessed, Powered
- Awning - Side Carefree Spirit Limited
- Door Bell
- Exterior Lighted Acrylic Assist Handle (at main entrance door)
- Radius Windows w/Dark Tinted Safety Glass
- Skylight in Bathroom w/Soft Shade
- Step-Automatic Triple
- Vent-Power in Bath Area w/Wall Switch

BEDROOM FEATURES

- Bed Base w/Decorative Fabric Padding & Perimeter Lighting
- Bed Queen (60" x 80") w/Luxurious Pillow
- Top Mattress
- Comforter Quilted w/Matching Sham & Accent Pillow
- Lifts for Convenient Storage Under Fixed Beds
- Slideout in Bedroom



1}



2}

1} Beautiful cabinetry and lined day/night matching shades enhance the luxury of the master bedroom.
2} The large open bath in the London Aire® Luxury Coach features Corian® countertops, rich cabinetry and a euro-style shower.





1} The kitchen was designed and built to please the most discerning chef with its long list of features including ceramic tile, Corian® countertops, built-in coffee maker, 12 cubic foot side-by-side refrigerator and microwave. All are easy to reach.

2} The leather/vinyl driver's seat has air ride, power lumbar, remote slide, six-way power, ergo flex leveling arms. The privacy curtains are also motorized for your convenience.

3} Here is an inviting way to relax in true luxury. The inlaid sculptured carpet has a matching rug for the kitchen.

4} The seamless fiberglass and excellent graphics make a bold independent statement. The generator has a power activated slide and the step cover folds away in a flush compartment.







1} Slide behind the wheel into a soft leather, swiveling bucket seat. The privacy curtains are motorized for your convenience. 2} The plasma TV drops down for viewing and tucks neatly out of the way when not in use.



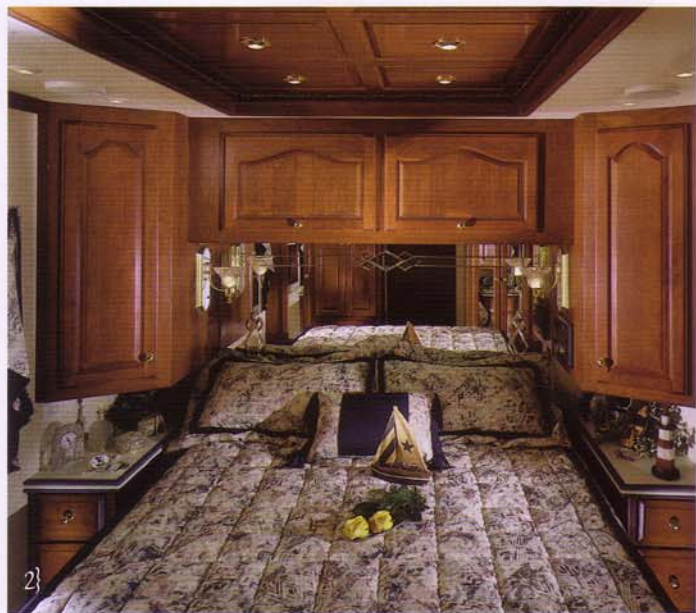
3

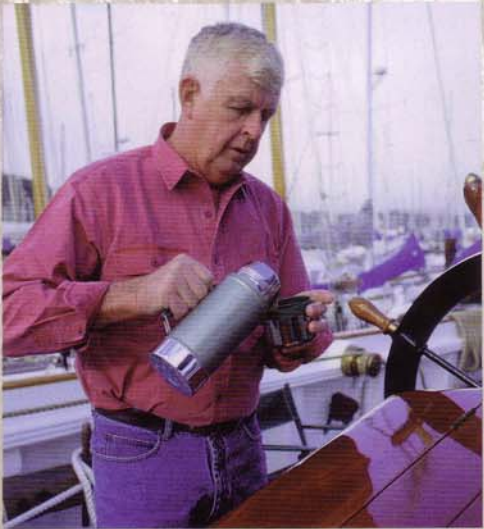


4



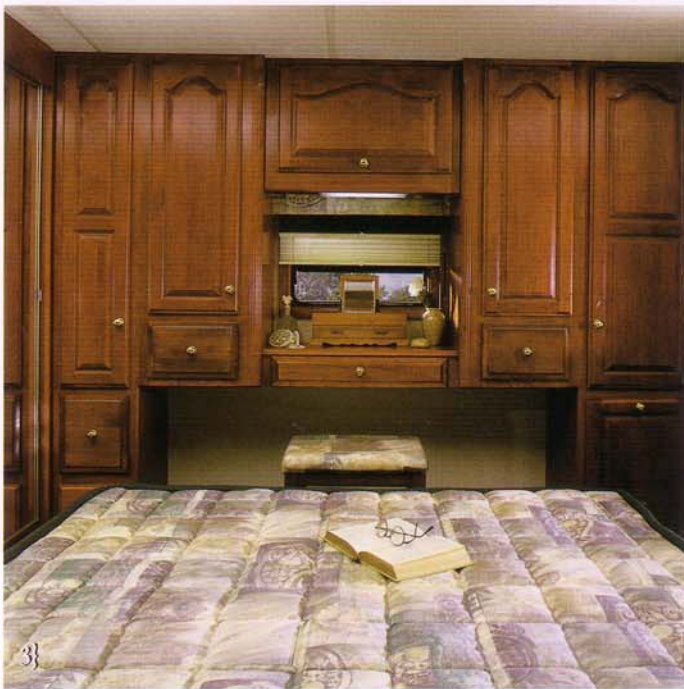
1} Corian® countertops, a built-in coffee maker; a 12 cubic foot side-by-side refrigerator and a microwave/convection oven are just a few of the outstanding appointments in the kitchen. Beautiful hardwood cabinetry is available in Washington Cherry, Light Oak or Frosted Maple. 2} The master bedroom includes an abundance of richly crafted cabinetry. The ceiling is raised in the center with recessed accent lighting. 3} A leather love seat with built-in incliner is always a popular spot to relax. 4} Choose from one of three excellent exterior graphic packages for 1999.







1} London Aire luxury includes wallpaper throughout, inlaid-sculptured carpet and a 32" TV built into the entertainment center. 2} Our contemporary kitchen includes a big Dometic® style side-by-side refrigerator. 3} Excellent use of space in an eye pleasing setting sums up the built-in vanity in the bedroom. 4} The master bedroom and bath were planned for comfort and convenience.







1} Ceramic tile sets a beautiful tone in this elegant island kitchen. The cabinets have adjustable shelves for added storage. 2} Plenty of drawers with dove-tail construction and easy gliding guides are well-planned in the master bedroom. 3} Enjoy life to the finest in two great swivel recliners. The glass top coffee table and end tables have fluted edges and perfectly match the cabinetry. The day/night pleated shades are lined for extra security. 4} Sleek exterior lines are accented beautifully with our seamless fiberglass construction.



