



1999 FIFTH WHEEL



1999 CLASS A MOTORHOME



1999 DIESEL PUSHER





1999 5TH WHEEL

1999 DIESEL PUSHER

1999 CLASS A MOTORHOME

Newmar® is proud to offer you the finest line of recreational vehicles available. Our tradition of designing and building quality recreational vehicles has long been

recognized along with the fact that our own participation in recreational vehicle living gives us the experience and knowledge to build superior products for our customers.

We appreciate your taking the time to look over our brochure and products at our authorized dealer showrooms. We sincerely hope to earn you as one of

our many happy customers who have learned that Newmar is An American Tradition of Excellence.

Mahlon Miller
Chairman of the Board

We invite you to visit our state of the art production facility in Nappanee, Indiana.

Plant tours are offered at
10:00 a.m. and 1:00 p.m.,
Monday through Friday.

[Newmar Kountry Klub]

Don't forget to check out the Klub—the Newmar® Kountry Klub, that is. All you need for eligibility is to be a proud owner of any of the fine Newmar® recreational vehicles.



An American Tradition Of Excellence

355 N DELAWARE ST • PO BOX 30

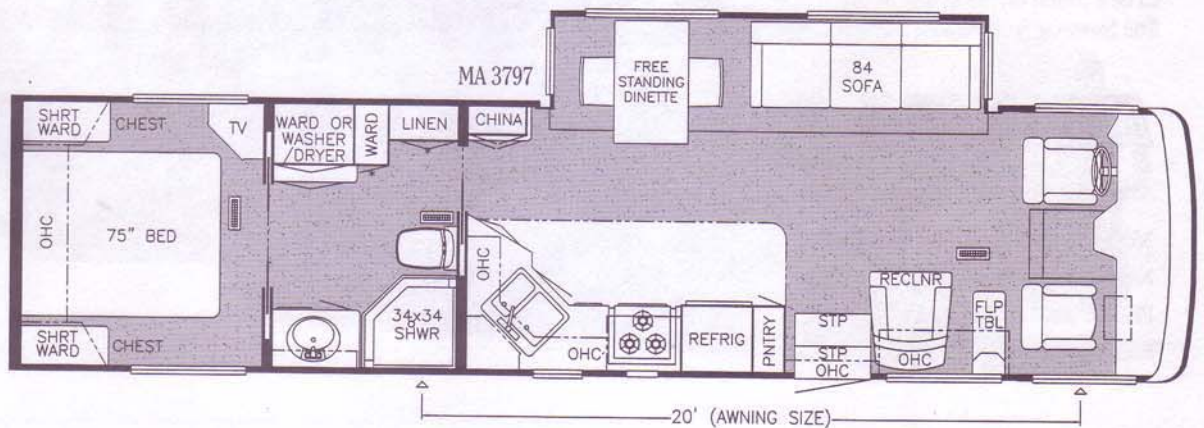
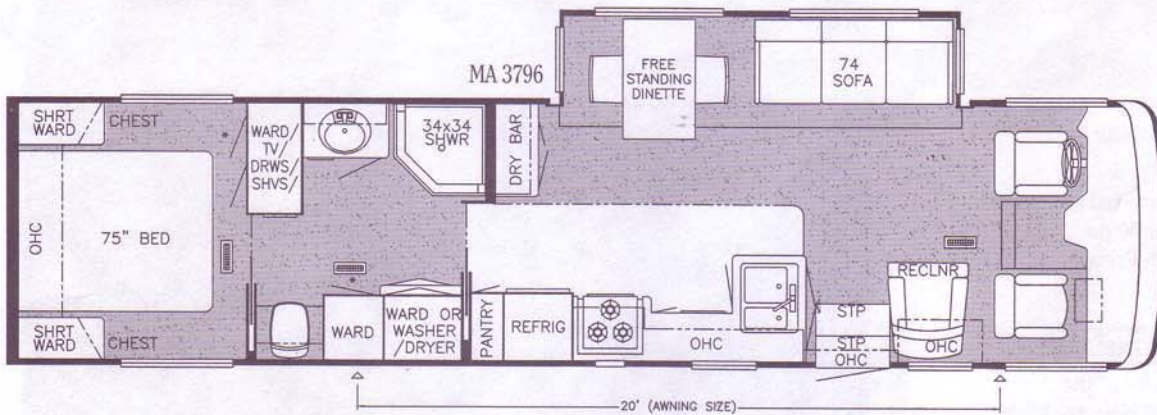
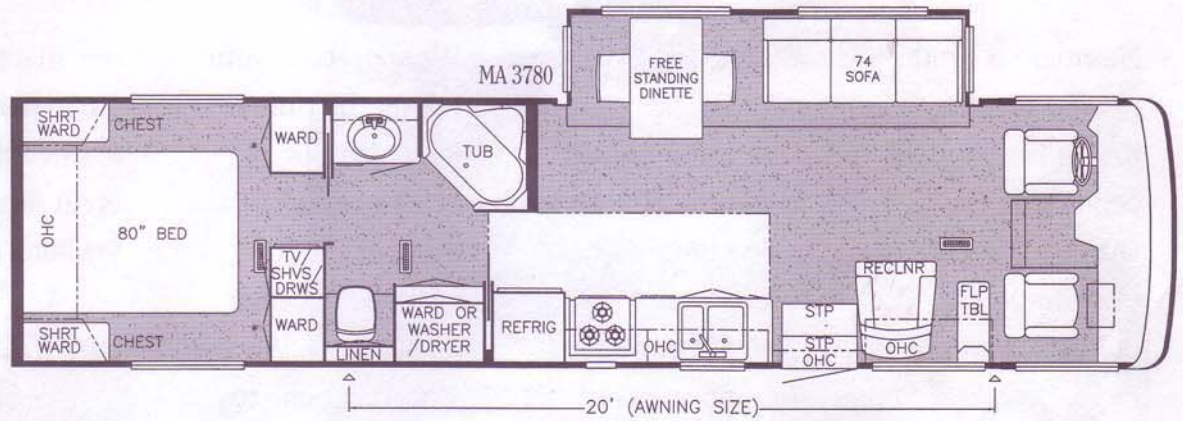
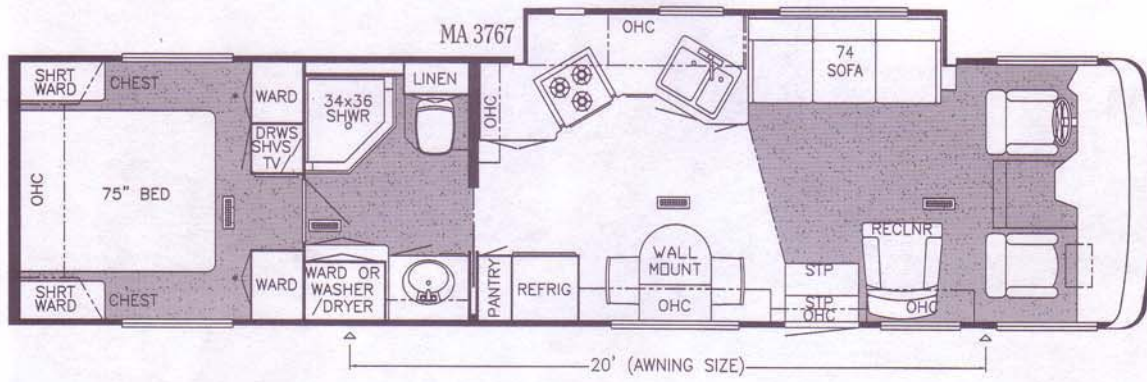
NAPPANEE IN 46550-0030

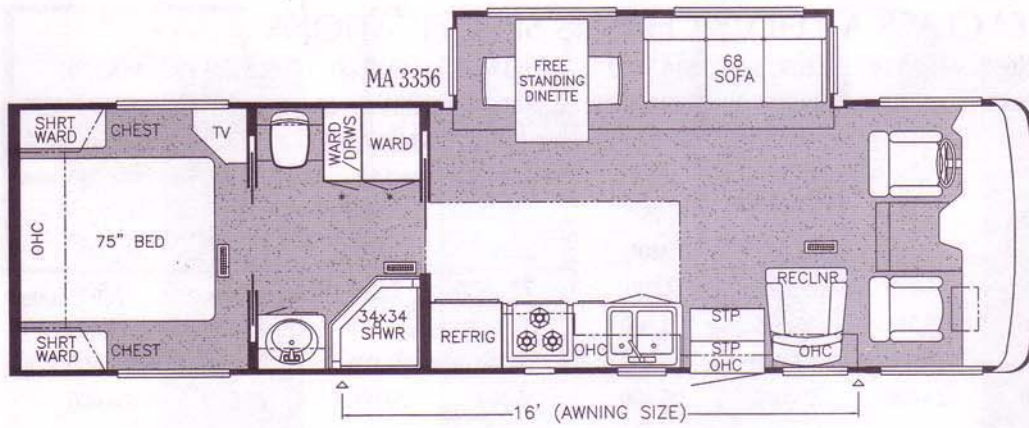
PHONE 219 773-7791 • FAX 219 773-2895

<http://www.newmarcorp.com>

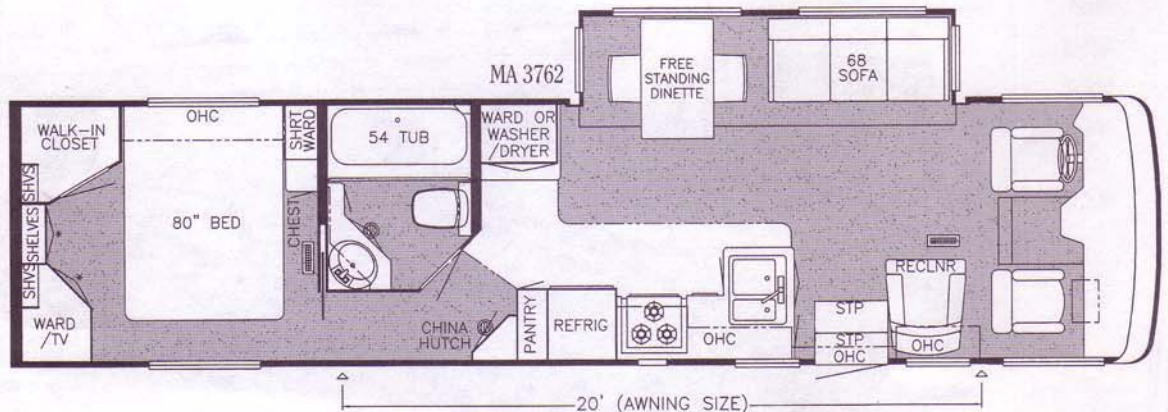
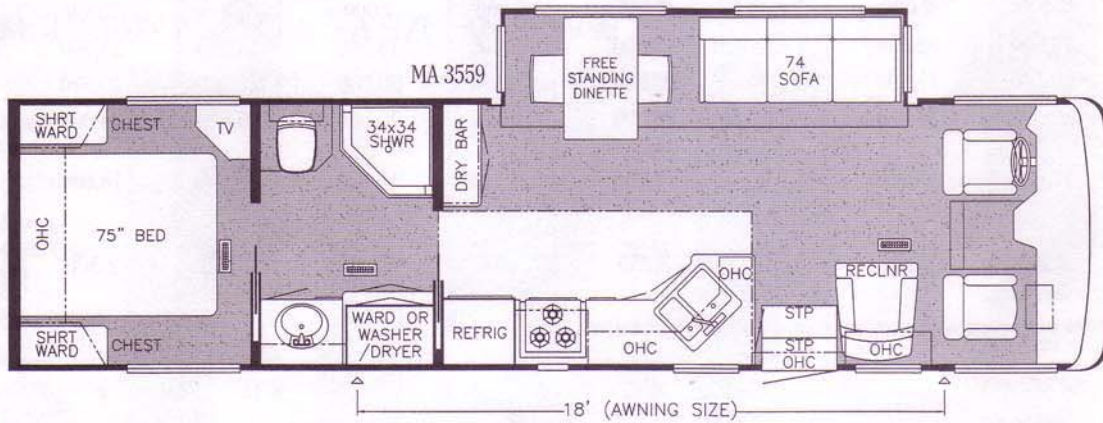
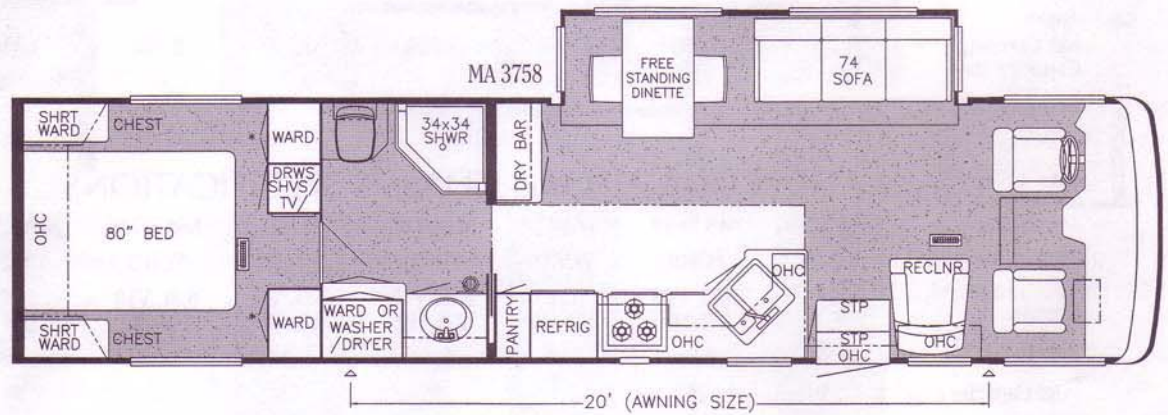


Compliments of:





Prices, specifications, and floorplans are subject to change at Newmar's discretion without prior written notice or obligation. Some floorplans may show optional chairs or end tables. See dealer for availability.



MOUNTAIN AIRE® CLASS A CHEVY CHASSIS SPECIFICATIONS

Model	MA3356	MA3559	MA3758	MA3762	MA3767	MA3780	MA3796	MA3797
Chassis	CHEVY P-12	CHEVY P-12	CHEVY P-12	CHEVY P-12	CHEVY P-12	CHEVY P-12	CHEVY P-12	CHEVY P-12
Engine	454 265 HP	454 265 HP	454 265 HP	454 265 HP	454 265 HP	454 265 HP	454 265 HP	454 265 HP
Axle Ratio	4.78	4.78	4.78	4.78	4.78	4.78	4.78	4.78
Fuel Capacity (Gal)	75	75	75	75	75	75	75	75
Wheel Base	200"	216"	240"	240"	240"	240"	240"	240"
Front GAWR (lbs)	7,500	7,500	7,500	7,500	7,500	7,500	7,500	7,500
Rear GAWR (lbs)	13,500	13,500	13,500	13,500	13,500	13,500	13,500	13,500
GVWR (lbs)	21,000	21,000	21,000	21,000	21,000	21,000	21,000	21,000
GCWR (lbs)	26,000	26,000	26,000	26,000	26,000	26,000	26,000	26,000
Approx. Unloaded Vehicle Wt. (lbs)	17,910	18,000	18,540	17,250	18,630	18,480	18,660	18,620
Approx. Net Carrying Capacity (lbs)	3,090	3,000	2,460	3,750	2,370	2,520	2,340	2,380

Length, Heights, Widths and Dry Weights are Approximate. Weight will vary based on optional equipment added to the above base weight.

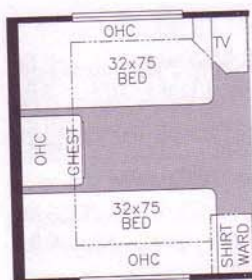
MOUNTAIN AIRE® CLASS A FORD CHASSIS SPECIFICATIONS

Model	MA3356	MA3559	MA3758	MA3762	MA3767	MA3780	MA3796	MA3797
Chassis	FORD	FORD	FORD	FORD	FORD	FORD	FORD	FORD
Engine	6.8L V10 275 HP	6.8L V10 275 HP	6.8L V10 275 HP	6.8L V10 275 HP	6.8L V10 275 HP	6.8L V10 275 HP	6.8L V10 275 HP	6.8L V10 275 HP
Axle Ratio	5.38	5.38	5.38	5.38	5.38	5.38	5.38	5.38
Fuel Capacity (Gal)	75	75	75	75	75	75	75	75
Wheel Base	200"	216"	240"	240"	240"	240"	240"	240"
Front GAWR (lbs)	7,000	7,000	7,000	7,000	7,000	7,000	7,000	7,000
Rear GAWR (lbs)	13,500	13,500	13,500	13,500	13,500	13,500	13,500	13,500
GVWR (lbs)	20,500	20,500	20,500	20,500	20,500	20,500	20,500	20,500
GCWR (lbs)	26,000	26,000	26,000	26,000	26,000	26,000	26,000	26,000
Approx. Unloaded Vehicle Wt. (lbs)	17,290	17,380	17,920	17,250	18,010	17,860	18,040	18,000
Approx. Net Carrying Capacity (lbs)	3,210	3,120	2,580	3,250	2,490	2,640	2,460	2,500

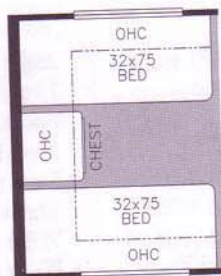
Length, Heights, Widths and Dry Weights are Approximate. Weight will vary based on optional equipment added to the above base weight.



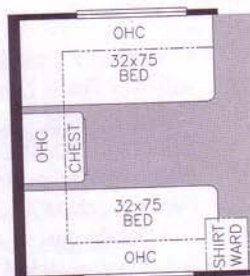
1999 CLASS A MOTORHOME



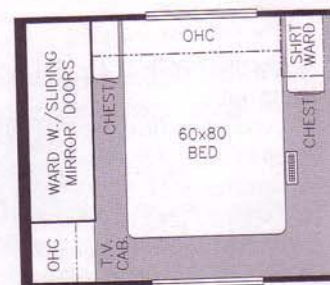
Option K094
75" twin beds
Available in: MA 3356, 3559, 3797



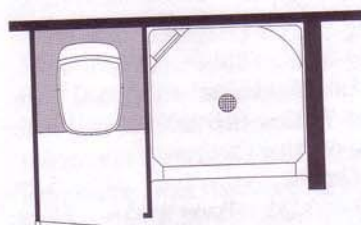
Option K096
75" twin beds
Available in: MA 3758, 3767, 3780



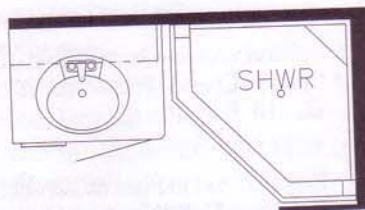
Option K097
75" twin beds
Available in: MA 3796



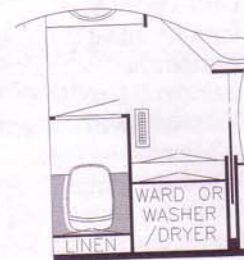
Option K950
Honeymoon suite bedroom
Available in: MA 3758, 3762, 3780



Option P201
Enclosed stool room w/straight shower
Available in: MA 3758



Option P210
38" corner shower ilo tub
Available in: MA 3780



Option P191
Enclosed stool room
Available in: MA 4080, 4081

CLASS A OPTIONAL FEATURES

MOUNTAIN AIRE® CLASS A SIZES AND CAPACITIES

Model	MA3356	MA3559	MA3758	MA3762	MA3767	MA3780	MA3796	MA3797
Approx. O.A.L. Ford & Freightliner	33'-6"	35'-6"	37'-6"	37'-6"	37'-6"	37'-6"	37'-6"	37'-6"
Approx. O.A.L. Chevy P12	34'-1"	36'-1"	38'-1"	38'-1"	38'-1"	38'-1"	38'-1"	38'-1"
Overall Width	101"	101"	101"	101"	101"	101"	101"	101"
Approx. O.A.H. Ford & Freightliner	11'-8"	11'-8"	11'-8"	11'-8"	11'-8"	11'-8"	11'-8"	11'-8"
Approx. O.A.H. Chevy P12	12'-0"	12'-0"	12'-0"	12'-0"	12'-0"	12'-0"	12'-0"	12'-0"
Interior Width	95 1/2"	95 1/2"	95 1/2"	95 1/2"	95 1/2"	95 1/2"	95 1/2"	95 1/2"
Interior Height	78"	78"	78"	78"	78"	78"	78"	78"
Grey Tank	50 Gal.	50 Gal.	50 Gal.	50 Gal.	50 Gal.	50 Gal.	50 Gal.	50 Gal.
Sewage Tank	50 Gal.	50 Gal.	50 Gal.	50 Gal.	50 Gal.	50 Gal.	50 Gal.	50 Gal.
Water Tank	56 Gal.	56 Gal.	56 Gal.	56 Gal.	56 Gal.	56 Gal.	56 Gal.	56 Gal.
L/P Tank	32 Gal.	32 Gal.	32 Gal.	32 Gal.	32 Gal.	32 Gal.	32 Gal.	32 Gal.
Furnace BTU	35,000	35,000	40,000	40,000	40,000	40,000	40,000	40,000

Length, Heights, Widths and Dry Weights are Approximate. Weight will vary based on optional equipment added to the above base weight.

MOUNTAIN AIRE® CLASS A FREIGHTLINER CHASSIS SPECIFICATIONS

Model	MA3356	MA3559
Chassis	FreightLiner	FreightLiner
Engine	CUM 210	CUM 210
Axle Ratio	3.31	3.31
Fuel Cap. (Gal)	90	90
Wheel Base	200"	216"
Front GAWR (lbs)	7,000	7,000
Rear GAWR (lbs)	13,500	13,500
GVWR (lbs)	20,500	20,500
GCWR (lbs)	25,500	25,500
Approx. Unloaded Vehicle Wt. (lbs)	17,840	17,930
Approx. Net Carrying Capacity (lbs)	2,660	2,570

OPTIONAL FEATURES

AIR CONDITIONING & HEATING WT.

- Air Conditioner Brisk Air 15M BTU w/Heat Pump (extra)100 lbs.
- Air Conditioner Brisk Air 15M BTU w/Heat Pump in Place of Standard5 lbs.
- Air Conditioner Central Penguin 13.5M BTU w/Heat Pump (extra)100 lbs.
- Auxiliary Heater in Bedroom20 lbs.

APPLIANCES & ACCESSORIES

- CB Radio2 lbs.
- CD Player-Remote 10 Disc Changer w/Amplifier & Subwoofer10 lbs.
- Cellular Telephone Antenna1 lb.
- Coffee Maker5 lbs.
- Color TV-13" AC24lbs.
- Icemaker Added to Dometic Refrigerator5 lbs.
- Icemaker U Line57 lbs.
- Microwave Oven Convection 30" w/3-Burner Hot Plate13 lbs.
- PathMaster Navigation System8 lbs.
- Refrigerator Dometic 1062 (10 cu. ft.)91 lbs.
- Refrigerator Dometic Side-By-Side 1292 (12 cu. ft.)47 lbs.
- Safe50 lbs.
- Satellite Dish (Winegard) w/Automatic Seeking System (does not include DSS receiver)70 lbs.
- Satellite Dish (Winegard) w/Manual Systems (does not include DSS receiver)13 lbs.
- Security System2 lbs.
- Stereo AM/FM CD Player in Place of Standard Dash Stereo0 lbs.
- Telephone Jack Interior, Extra1 lb.
- Trumpet Horn2 lbs.
- TV Jack for Exterior Use on Door Side1 lb.
- TV Jack, Extra1 lb.
- VCR-4 Head11 lbs.
- Washer/Dryer Compact One Piece185 lbs.
- Washer/Dryer Prep22 lbs.
- Water Heater 10 Gal. Gas/Electric, Direct Spark Ignition & Engine Assist10 lbs.

CABINETS & FURNITURE

- Built-In Booth Dinette w/Drawers in Place of Free Standing Table/Chairs23 lbs.
- Cabinetry Cherry Hardwood w/Raised Panel Doors0 lbs.
- Cabinetry Frosted Maple Hardwood0 lbs.
- Chair Flexsteel High Back Recliner w/Headrest Leather/Vinyl in Place of Standard Chair10 lbs.
- Chair Flexsteel Large Free Standing Recliner w/Leather/Vinyl in Place of Standard Chair27 lbs.
- Dinette Chairs - Two Extra20 lbs.
- Dinette Table Hidden Leaf in Place of Free Standing Table50 lbs.
- Folding Coffee Table20 lbs.
- Front Seat 6-Way Power16 lbs.

CABINETS & FURNITURE (CONT.)

- Front Seats Flexsteel Leather/Vinyl w/6-Way Power Lumbar Support & Ergo-Flex Arms36 lbs.
- Full Length Wardrobe in Place of Wardrobe/Washer/Dryer Cabinet0 lbs.
- Overhead Cabinet Added in Slideout75 lbs.
- Pull-Out Pantry10 lbs.
- Sofa Flexsteel Hide-A-Bed 74" in Place of Standard Sofa27 lbs.
- Sofa Flexsteel Hide-A-Bed 74" Leather/Vinyl in Place of Standard Sofa27 lbs.
- Sofa Flexsteel Magic Bed Leather/Vinyl in Place of Standard Sofa10 lbs.
- Wood Doors & Shelves on China Cabinet in Place of Standard8 lbs.

CHASSIS FEATURES

- Optional Chassis-Chevy P-12 (Vortec Engine)
- Optional Chassis-Freightliner Diesel (210 HP Engine)

ELECTRICAL FEATURES

- Battery (2-6V) in Place of Standard36 lbs.
- Generator 7.0 KW Onan Marquis42 lbs.
- Generator 7.0 KW Power Tech (diesel) in Place of Standard Generator195 lbs.
- Inverter 400 Watt (for dash TV & VCR)10 lbs.
- Light Spot w/Remote Control3 lbs.
- Lighting Fluorescent Recessed in Ceiling & Overhead Cabinets1 lb.
- Lights Docking4 lbs.
- Lights Exterior Security (one on each side)2 lbs.
- Lights Exterior Security (two on each side)4 lbs.
- Recept 110V1 lb.
- Recept 12V1 lb.
- Surge Protector (120V)3 lbs.

EXTERIOR FEATURES

- Roof 7 Top Wrap Gel-Coated Fiberglass w/1/4" Foam Insulation2 lbs.

INTERIOR FEATURES

- Carpet Color Change from Standard Package0 lbs.
- Center Entrance Door Layout0 lbs.
- Floor Covering-Ceramic Tile in Bath Area75 lbs.
- Floor Covering-High Pressure Laminated 15" Tile in Bath10 lbs.
- Floor Covering-High Pressure Laminated Simulated Plank in Bath10 lbs.
- Floor Covering-High Pressure Laminated Simulated Plank in Kitchen Area0 lbs.
- Floor Covering-Vinyl in Bath20 lbs.
- Hardwood Fascia on Slideout40 lbs.
- Sun Shade on Passenger's Side Window2 lbs.
- Window Treatment Lined Day/Night Pleated Shades5 lbs.

PLUMBING/BATH FEATURES

- Assist Handle in Tub/Shower2 lbs.
- Heat Pads for Holding Tanks 110V2 lbs.
- Shower Corner10 lbs.
- Stool Room Enclosed25 lbs.
- Stool Room Enclosed w/Straight Shower35 lbs.
- Water Filter (for entire unit)6 lbs.
- Water Filter w/Drink Dispenser (kitchen)5 lbs.

WINDOWS, AWNINGS & VENTS

- Awning-Side A&E 9000128 lbs.
- Awning-Side Carefree Spirit Limited128 lbs.
- Awning-Side Tension Rafter (shipped loose)5 lbs.
- Awning-Slideout Cover A&E25 lbs.
- Awning-Slideout Cover Carefree (with full view window awning)35 lbs.
- Awning-Window A&E 90005 lbs.
- Awning-Window Carefree Spirit Limited5 lbs.
- Door Driver's Side w/Power Window50 lbs.
- Radius Windows w/Double Pane Dark Tinted Safety Glass (not available on driver/passenger area)93 lbs.
- Rear Window40 lbs.
- Vent-Fantastic w/Rain Sensor11 lb.
- Vent-Fantastic w/Rain Sensor in Place of Standard Bath Vent11 lb.
- Vent-Fantastic, Vented Through Central Air Duct in Place of Kitchen Vent0 lbs.

STANDARD FEATURES

AIR CONDITIONING & HEATING

- Air Conditioner Central Penguin 13.5M BTU w/Heat Pump (1)
- Heat In Floor Ducted

APPLIANCES & ACCESSORIES

- Cable TV Connection
- Carbon Monoxide Detector
- CB Antenna
- Color TV-19"
- LP Leak Detector
- Microwave Oven 22"
- Microwave Oven Non-Convection 30"
- Range Cover Laminated w/Matching Countertop Material
- Range Hood w/Light & Fan
- Range Recessed 3-Burner w/Black Glass Oven Door & Electronic Ignition
- Rear View Monitor System
- Refrigerator Dometic Royale 3862 (8 cu. ft.)
- Refrigerator Front Hardwood Raised Panel
- Satellite Dish Prep Only-w/RG 6 Coaxial, Phone/TV Jack & 110V Recept
- Speaker Switch System (between dash area TV & stereo)
- Stereo AM/FM Cassette w/Clock (in dash)
- Telephone Connection w/1 Phone Jack
- TV Antenna is Up Warning Light on Dash
- TV Antenna w/Power Booster & 2 Jacks
- VCR Prep w/TV Video Selector Switch
- Water Heater 10 Gal. Gas/Electric w/Direct Spark Ignition

CABINETS & FURNITURE

- Cabinetry Oak Hardwood w/Raised Panel Double Arched Doors
- Cedar Paneling on Side Wall of One Wardrobe
- Chair Flexsteel High Back Recliner w/Headrest
- Corian Countertop Color Coordinated Edge & Integrated Porcelain Lavatory Bowl in Bath
- Corian Countertop in Kitchen w/Color Coordinated Edge & Stainless Steel Sink
- Drawers w/Metal Guides
- Front Seats Flexsteel Fabric Swivel/Recline w/3 Point Seat Belt
- Molded Silverware Divider Tray
- Sofa Flexsteel Hide-A-Bed
- Sofa Flexsteel Magic Bed

CHASSIS FEATURES

- Standard Chassis-Ford F-53 (6.8L V-10 Engine)
- Cruise Control
- Dash Heater/Air Conditioner High Output
- Recessed Fuel Fill w/Locking Door

CHASSIS FEATURES (CONT.)

- Spare Tire
- Steering Wheel Tilt
- Wheel Simulators-Stainless Steel

ELECTRICAL FEATURES

- Battery (2-12V) on Pull-Out Tray
- Battery Disconnect (for house battery)
- Converter 75 AMP w/Charger
- Electrical Service 50 AMP w/Flexible Cord
- Generator Onan Marquis w/1 Remote Switch & Automatic Changeover (5.5KW Ford/Chevy)
- ICC Light Flasher Switch
- Lights Daytime Headlight System
- Lights Driving
- Lights in Exterior Storage Compartments
- Lights in Wardrobes
- Lights Interior Courtesy
- Midship Side Turn Signals
- Recepts 110V w/Ground Fault Interrupter (interior & exterior)
- Solar Panel 5 Watt to Charge Chassis Battery
- Switch for Emergency Chassis Engine Start

EXTERIOR FEATURES

- Convex Exterior Mirrors w/Remote Control & Defrost, Front Mounted
- Exterior Front & Rear Gel-Coated Fiberglass End Caps
- Exterior Sides Gel-Coated Fiberglass
- Hitch for Towing Car (w/2 extra 14 gauge wires for customer use)(class-2, 4000# rating)
- Jacks Hydraulic Leveling w/"Touch" Manual Control
- Mud Flaps (front & rear)
- Roof Rack & Ladder
- Roof Rubber w/9MM Decking
- Slideout Large w/Patented Flat Floor
- Undercoating

INTERIOR FEATURES

- Ceiling Woven Soft Touch
- Decorative Border in Bedroom
- Decorative Wall Clock & Mirror
- Floor Covering-Carpet Staintech, 40 oz. 100% Nylon Plush Saxony w/Stainmaster Finish
- Floor Covering-High Pressure Laminated 15" Tile in Kitchen Area
- Passenger Pull-Out Convenience Tray in Dash
- Sink Covers-Two
- Smoke Detector & 10 BC Fire Extinguisher
- Sun Shade on Driver's Side Window
- Window Treatment Day/Night Pleated Shades & Lamberquins
- Window Treatment Mini Blinds (kitchen)

PLUMBING/BATH FEATURES

- Bath Accessories Brass (1 each-towel bar, tissue holder, towel ring & robe hook)
- Monitor Panel
- Sewage Holding Tank Rinse
- Sewage Hose Holder (easy access flop down tray)
- Shower Exterior (on off door side)
- Stool China w/Spray Attachment
- Tub/Shower Fiberglass w/Enclosure
- Winterize Convenience Package (w/water heater bypass)

CONSTRUCTION FEATURES

- Insulation Fiberglass R7 Sidewalls & Floor, R11 Roof
- Rear Bumper w/Slide-Out Tray for Spare Tire
- Structure-101" Widebody
- Structure-Aluminum Sidewalls & Roof, 16" On Center

WINDOWS, AWNINGS & VENTS

- Door Bell
- Exterior Lighted Acrylic Assist Handle (at main entrance door)
- Radius Windows w/Dark Tinted Safety Glass
- Skylight in Bathroom w/Soft Shade
- Step-Automatic Double
- Vent-Fantastic w/Rain Sensor in Kitchen
- Vent-Power in Bath Area w/Wall Switch

BEDROOM FEATURES

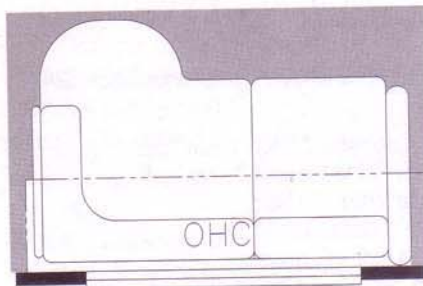
- Bedspread Quilted w/Reversed Sham & Accent Pillow
- Lifts for Convenient Storage Under Fixed Beds



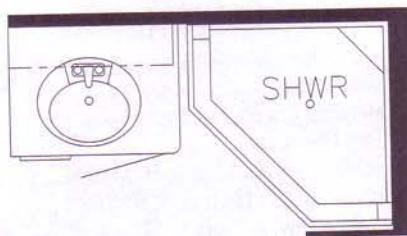
Prices, specifications, and floorplans are subject to change at Newmar's discretion without prior written notice or obligation. Some floorplans may show optional chairs or end tables. See dealer for availability.



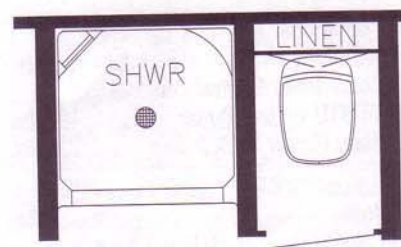
1999 DIESEL PUSHER



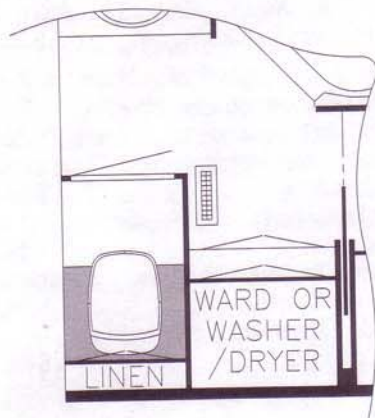
Option K911
L-sofa 66" leather w/incliner
Available in: All MP'S
(Not available w/center entry option)



Option P210
38" corner shower ilo tub
Available in: MP 4080, 4081



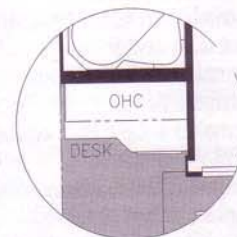
Option P200
Enclosed stool room w/straight shower
Available in: MP 4064



Option P190
Enclosed stool room
Available in: MP 4080, 4081



Option KI10
Entertainment center 74" desk &
lamp stand (Not available w/center entry option)
Available in: MP 4060, 4064, 4080, 4081



Option KI21
Desk ilo dry bar
Available in: MP 4081

MOUNTAIN AIRE® DIESEL PUSHER SPARTAN CHASSIS SPECIFICATIONS

Model	MP4059	MP4060	MP4064	MP4080	MP4081
Chassis	SPARTAN M/M	SPARTAN M/M	SPARTAN M/M	SPARTAN M/M	SPARTAN M/M
Engine	CUM 325	CUM 325	CUM 325	CUM 325	CUM 325
Axle Ratio	4.78	4.78	4.78	4.78	4.78
Fuel Cap. (Gal)	150	150	150	150	150
Wheel Base	276"	276"	276"	276"	276"
Front GAWR (lbs)	12,000	12,000	12,000	12,000	12,000
Rear GAWR (lbs)	19,000	19,000	19,000	19,000	19,000
GVWR (lbs)	31,000	31,000	31,000	31,000	31,000
GCWR (lbs)	24,690	24,730	24,510	24,770	24,730
Approx. Unloaded Vehicle Wt. (lbs)	6,310	6,270	6,490	6,230	6,270
Approx. Net Carrying Capacity (lbs)	3,210	3,120	2,580	3,250	2,490

Length, Heights, Widths and Dry Weights are Approximate. Weight will vary based on optional equipment added to the above base weight.

MOUNTAIN AIRE® DIESEL PUSHER SIZES AND CAPACITIES

Model	MP4059	MP4060	MP4064	MP4080	MP4081
Approx. Overall Length	40'-0"	40'-0"	40'-0"	40'-0"	40'-0"
Overall Width	101"	101"	101"	101"	101"
Approx. Overall Height	11'-8"	11'-8"	11'-8"	11'-8"	11'-8"
Interior Width	95 1/2"	95 1/2"	95 1/2"	95 1/2"	95 1/2"
Interior Height	78"	78"	78"	78"	78"
Grey Tank	65 Gal.	65 Gal.	65 Gal.	65 Gal.	65 Gal.
Sewage Tank	45 Gal.	45 Gal.	45 Gal.	45 Gal.	45 Gal.
Water Tank	105 Gal.	105 Gal.	105 Gal.	105 Gal.	105 Gal.
L/P Tank	32 Gal.	32 Gal.	32 Gal.	32 Gal.	32 Gal.
Furnace BTU	40,000	40,000	40,000	40,000	40,000

Length, Heights, Widths and Dry Weights are Approximate. Weight will vary based on optional equipment added to the above base weight.

OPTIONAL FEATURES

AIR CONDITIONING & HEATING WT.

- Air Conditioner Brisk Air 15M BTU w/Heat Pump in Place of Standard..... 5 lbs.
- Air Conditioner Central Penguin 13.5M BTU w/Heat Pump (extra) 100 lbs.
- Auxiliary Heater in Bedroom..... 20 lbs.

APPLIANCES & ACCESSORIES

- CB Radio 2 lbs.
- CD Player - Remote 10 Disc Changer w/Surround Sound..... 15 lbs.
- Ceiling Fan (in bedroom area) 10 lbs.
- Cellular Telephone Antenna 1 lb.
- Coffee Maker 5 lbs.
- Freezer 100# Norcold AC/DC (on slides) in Exterior Storage Compartment 113 lbs.
- Freezer 75# Norcold DC (on slides) in Exterior Storage Compartment 100 lbs.
- Home Theater System w/Desktop in Place of Standard Features (available on 4060, 4064, 4080, 4081) (not with center entry)..... 100 lbs.
- Icemaker Added to Dometic Refrigerator 5 lbs.
- Icemaker U Line (not available on 4059, 4080, 4081) 57 lbs.
- Range Recessed 3-Burner w/Oven (inplace of hot plate) 50 lbs.
- Refrigerator Dometic 1062 (10 cu. ft.) 91 lbs.
- Refrigerator Dometic Side-By-Side 1292 (12 cu. ft.) (available on 4060, 4064, 4080, 4081) 47 lbs.
- Satellite Dish (Winegard) w/Automatic Seeking System (does not include DSS receiver) 70 lbs.
- Stereo AM/FM CD Player in Place of Standard Dash Stereo..... 0 lbs.
- Washer/Dryer Compact One Piece ..185 lbs.
- Washer/Dryer Prep 22 lbs.
- Washer/Dryer Sears Two Piece (in full length cabinet) 232 lbs.
- Water Heater 10 Gal. Gas/Electric, Direct Spark Ignition & Engine Assist..... 10 lbs.

CABINETS & FURNITURE

- Built-In Booth Dinette w/Drawers in Place of Free Standing Table/Chairs..... 23 lbs.
- Cabinetry Cherry Hardwood w/Raised Panel Doors..... 25 lbs.
- Cabinetry Frosted Maple Hardwood..... 0 lbs.
- Chair Flexsteel High Back Recliner, Leather/Vinyl in Place of Standard Chair..... 10 lbs.
- Chair Flexsteel Large Free Standing Recliner Leather/Vinyl in Place of Standard Chair..... 27 lbs.
- Dinette Chairs Two Extra..... 20 lbs.
- Dinette Table Hidden Leaf in Place of Free Standing Table..... 50 lbs.
- Front Seats Flexsteel Leather/Vinyl w/6-Way Power Lumbar Support/Ergo-Flex Arms & Footrest On Passenger Seat..... 38 lbs.
- Overhead Cabinet Added in Slideout (not available on 4064)..... 75 lbs.
- Pull-Out Pantry (available on 3865, 3884) 10 lbs.
- Sofa Flexsteel Hide-A-Bed 74" Leather/Vinyl in Place of Standard Sofa (available on 4060, 4080, 4081) 27 lbs.
- Sofa Flexsteel L-Lounge Leather/Vinyl w/Incliner & Ottoman in Place of 84" Sofa 20 lbs.
- Sofa Flexsteel L-Lounge Leather/Vinyl w/Incliner In Place of Chair & Lamp Stand (not available w/center entry) 50 lbs.
- Sofa Flexsteel Leather/Vinyl w/Dual Incliners & Snack Tray in Place of Standard Sofa (available on 4060, 4080) 10 lbs.
- Sofa Flexsteel Magic Bed Leather/Vinyl in Place of Standard Sofa (available on 4060, 4064, 484, 4081) 10 lbs.
- Sofa Flexsteel w/Dual Incliners & Snack Tray in Place of Standard Sofa (available on 4057, 4064, 4081) 10 lbs.
- Undermount Corian Sink in Bath & Kitchen 10 lbs.
- Wood Doors & Shelves on China Cabinet in Place of Standard 8 lbs.

CHASSIS FEATURES

- Optional Chassis-Freightliner X-Line 330 HP

ELECTRICAL FEATURES

- Generator 7.5 KW Onan (diesel) Quiet Series in Place of Power Tech 25 lbs.
- Inverter 400 Watt (for dash TV & VCR)..... 10 lbs.
- Inverter/Converter (Heart Freedom 20) 50 lbs.
- Light Spot w/Remote Control 3 lbs.
- Lights Exterior Security (one on each side)..... 2 lbs.

EXTERIOR FEATURES

- Front End Protective Vinyl Mask 35 lbs.
- Roof & Top Wrap Gel-Coated Fiberglass w/1/4" Foam Insulation 2 lbs.

INTERIOR FEATURES

- Floor Covering-Ceramic Tile in Bath Area..... 75 lbs.
- Floor Covering-Ceramic Tile in Kitchen Area 35 lbs.
- Sun Shade on Passenger's Side Window 2 lbs.
- Window Treatment Hardwood Lamberquin in Place of Cloth 30 lbs.
- Window Treatment Lined Day/Night Pleated Shades 5 lbs.

PLUMBING/BATH FEATURES

- Shower Corner (available on 4080) -10 lbs.

WINDOWS, AWNINGS & VENTS

- Awning-Front Entrance Door A&E 12 lbs.
- Awning-Side A&E 9000..... 128 lbs.
- Awning-Slideout Cover A&E 25 lbs.
- Awning-Window A&E 9000 5 lbs.
- Door Driver's Side w/Power Window 50 lbs.
- Radius Windows w/Double Pane Dark Tinted Safety Glass (not available on driver/passenger area) 93 lbs.

STANDARD FEATURES

AIR CONDITIONING & HEATING

- Air Conditioner Central Penguin 13.5M BTU w/Heat Pump (1)
- Heat In Floor Ducted

APPLIANCES & ACCESSORIES

- Air Horn
- Cable TV Connection
- Carbon Monoxide Detector
- CB Antenna
- Color TV-19"
- LP Leak Detector
- Microwave Oven Convection 30"
- Range Cover Laminated w/Matching Countertop Material
- Range Recessed 3-Burner Hot Plate w/Electronic Ignition
- Rear View Monitor System
- Refrigerator Dometic Royale 3862 (8 cu. ft.)
- Refrigerator Front Hardwood Raised Panel
- Satellite Dish Prep Only-w/RG 6 Coaxial, Phone/TV Jack & 110V Recept
- Speaker Switch System (between dash area TV & stereo)
- Stereo AM/FM Cassette w/Clock (in dash)
- Telephone Connection w/1 Phone Jack
- TV Antenna is Up Warning Light on Dash
- TV Antenna w/Power Booster & 2 Jacks
- TV Jack for Exterior Use on Door Side
- VCR-4 Head
- Water Heater 10 Gal. Gas/Electric w/Direct Spark Ignition

CABINETS & FURNITURE

- Cabinetry Oak Hardwood w/Raised Panel Double Arched Doors
- Cedar Paneling on Side Wall of One Wardrobe
- Chair Flexsteel High Back Recliner w/Headrest
- Corian Countertop Color Coordinated Edge & Integrated Porcelain Lavatory Bowl in Bath
- Corian Countertop in Kitchen w/Color Coordinated Edge & Stainless Steel Sink
- Drawers w/Metal Guides
- Front Seat 6-Way Power on Driver's Side
- Front Seats Flexsteel Fabric Swivel/Recline w/3 Point Seat Belt
- Molded Silverware Divider Tray
- Pull-Out Pantry

CHASSIS FEATURES

- Chassis-Spartan Mountain Master 325 HP Raised Rail w/Independent Front Suspension
- Air Brakes w/Automatic Slack Adjuster Front & Rear
- Anti-Lock Braking System
- Back-Up Alarm
- Cruise Control
- Dash Heater/Air Conditioner High Output
- Recessed Fuel Fill w/Locking Door (one on each side)
- Steering Wheel Tilt & Telescope
- Wheels Polished Aluminum

ELECTRICAL FEATURES

- Battery (4-6V) On Pull-Out Tray
- Battery Disconnect (for house battery)
- Converter 75 AMP w/Charger
- Electrical Service 50 AMP w/Flexible Cord
- Generator 7.0 KW Power Tech (diesel) Quiet Series on Slides w/Automatic Changeover
- ICC Light Flasher Switch
- Lighting Fluorescent Recessed in Ceiling & Overhead Cabinets
- Lights Daytime Headlight System
- Lights Docking
- Lights Driving
- Lights in Exterior Storage Compartments w/Automatic Switches
- Lights in Wardrobes
- Lights Interior Courtesy
- Midship Side Turn Signals
- Recepts 110V w/Ground Fault Interrupter (interior & exterior)
- Solar Panel 5 Watt to Charge Chassis Battery
- Switch for Emergency Chassis Engine Start
- Switched Recept for Engine Block Heater

EXTERIOR FEATURES

- Convex Exterior Mirrors w/Remote Control & Defrost, Front Mounted
- Exterior Front & Rear Gel-Coated Fiberglass End Caps
- Exterior Sides Gel-Coated Fiberglass
- Hitch for Towing Car (w/2 extra 14 gauge wires for customer use)(class-2, 4000# rating)
- Jacks Hydraulic Leveling w/Automatic Control
- Mud Flaps (front & rear)
- Painted Exterior Graphics w/Clear Coat Finish
- Roof Rack & Ladder
- Roof Rubber w/9MM Decking
- Slideout Large w/Patented Flat Floor
- Undercoating

INTERIOR FEATURES

- Ceiling Woven Soft Touch
- Decorative Border in Bedroom
- Decorative Wall Clock & Mirror
- Floor Covering-Carpet Staintech, 40 oz. 100% Nylon Plush Saxony w/Stainmaster Finish
- Floor Covering-High Pressure Laminated 15" Tile in Kitchen Area
- Hardwood Fascia on Slideout
- Sink Covers-Two
- Smoke Detector & 10 BC Fire Extinguisher
- Sun Shade on Driver's Side Window
- Window Treatment Day/Night Pleated Shades & Lamberquins
- Window Treatment Mini Blinds (kitchen)

PLUMBING/BATH FEATURES

- Bath Accessories Brass (1 each-towel bar, tissue holder, towel ring & robe hook)
- Exterior Convenience Wash Station (hot/cold water, soap & towel dispenser)
- Faucet for Kitchen Sink Single Handle High Rise (Moen)

PLUMBING/BATH FEATURES (CONT.)

- Faucet for Shower & Lavatory Single Handle (Moen)
- Monitor Panel
- Sewage Holding Tank Rinse
- Stool China w/Spray Attachment
- Tub/Shower Fiberglass w/Enclosure
- Water Filter w/Drink Dispenser (kitchen)
- Water Hose w/Automatic Rewind & City Water Hook-Up
- Winterize Convenience Package (w/water heater bypass)

CONSTRUCTION FEATURES

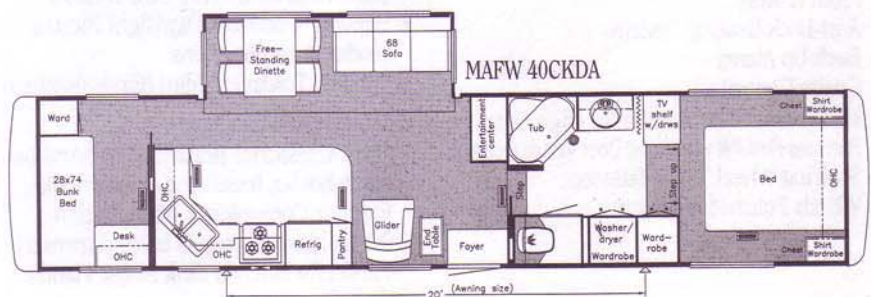
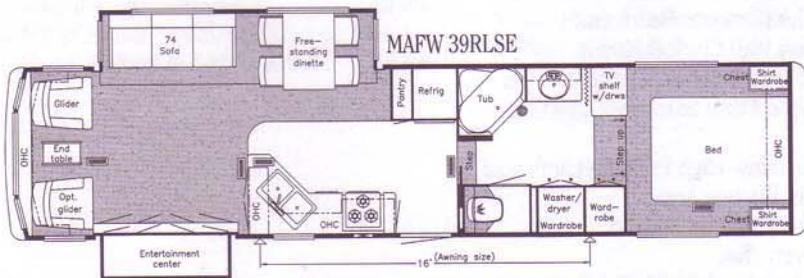
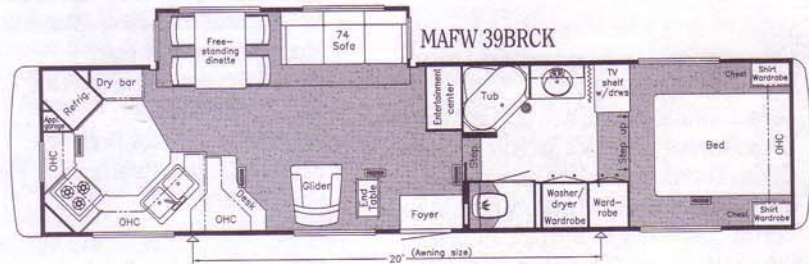
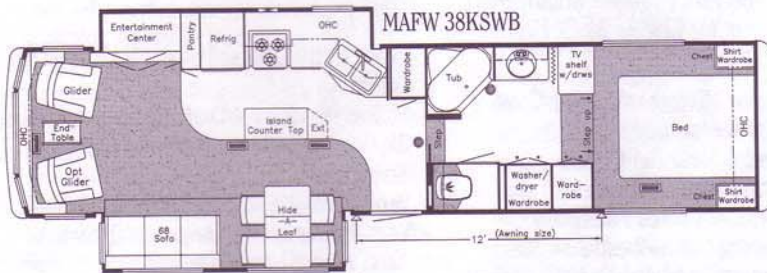
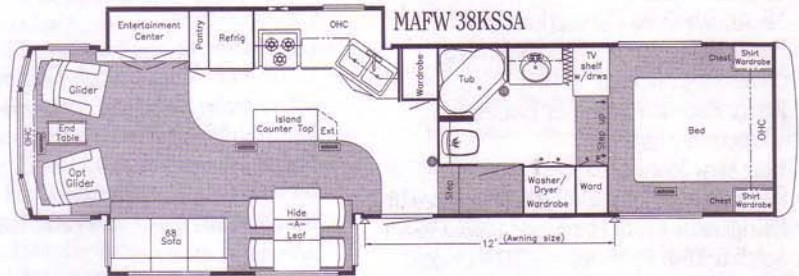
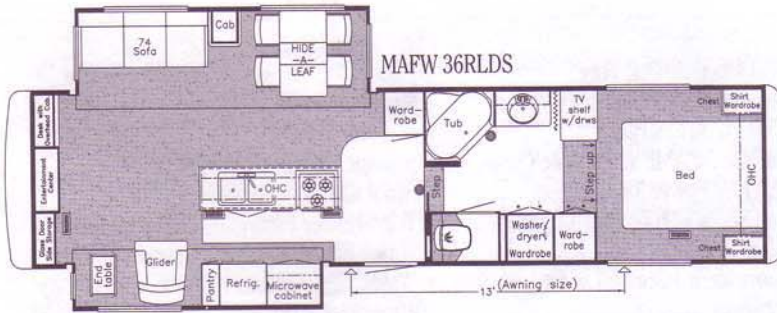
- Insulation Fiberglass R7 Sidewalls & Floor, R11 Roof
- Insulation Foam 5/8" Laminated in Sidewalls & Ceiling
- Structure-101" Widebody
- Structure-Aluminum Sidewalls & Roof, 16" On Center

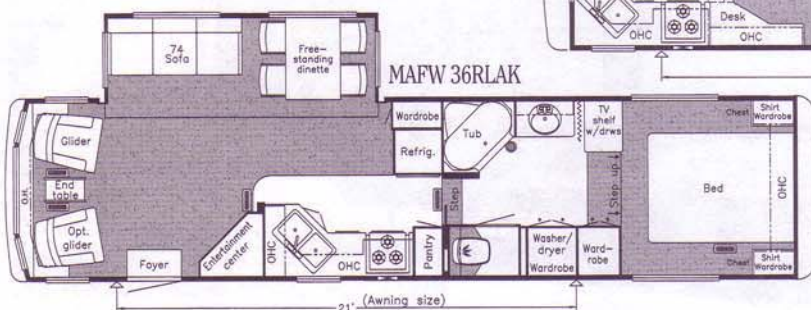
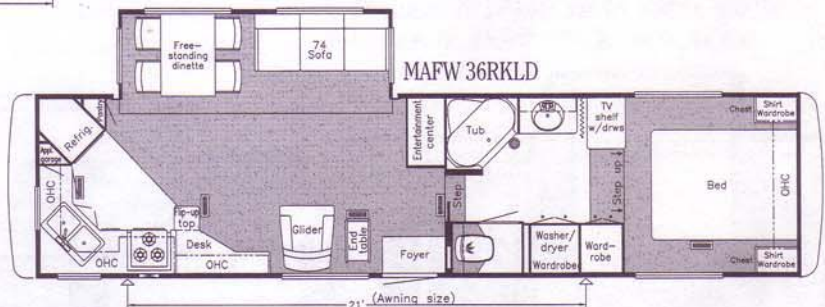
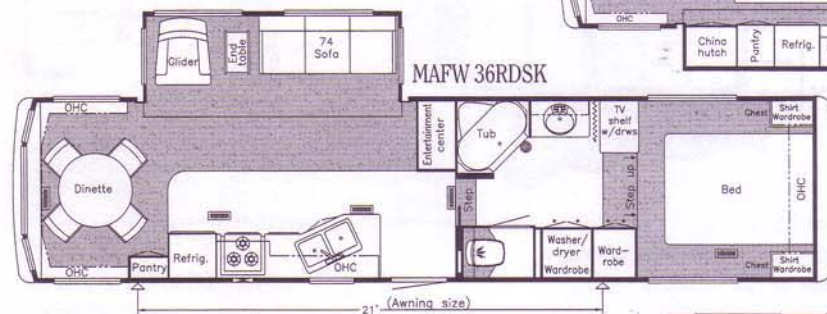
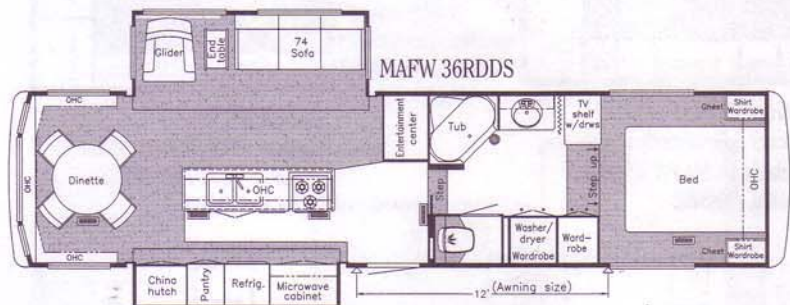
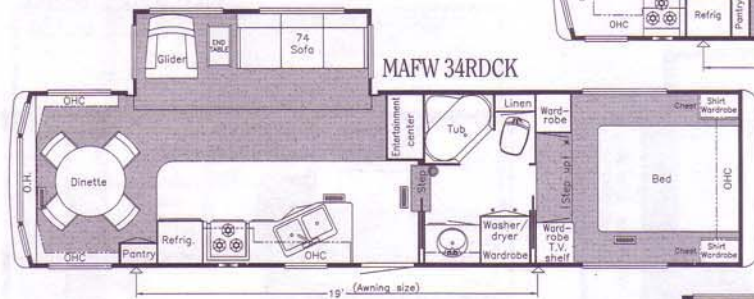
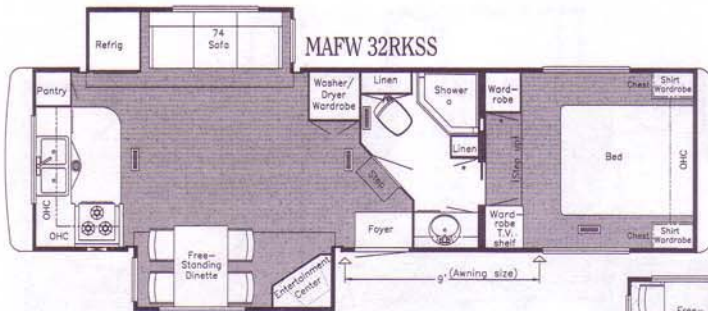
WINDOWS, AWNINGS & VENTS

- Door Bell
- Front Entry Door w/Power Flush Stepwell Cover
- Radius Windows w/Dark Tinted Safety Glass
- Skylight in Bathroom w/Soft Shade
- Step-Automatic Double
- Vent-Fantastic w/Rain Sensor in Kitchen
- Vent-Power in Bath Area w/Wall Switch

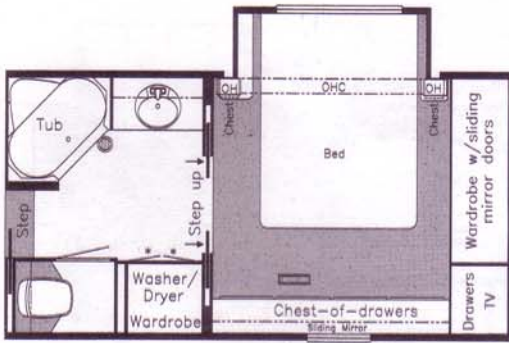
BEDROOM FEATURES

- Bedspread Quilted w/Reversed Sham & Accent Pillow
- Lifts for Convenient Storage Under Fixed Beds



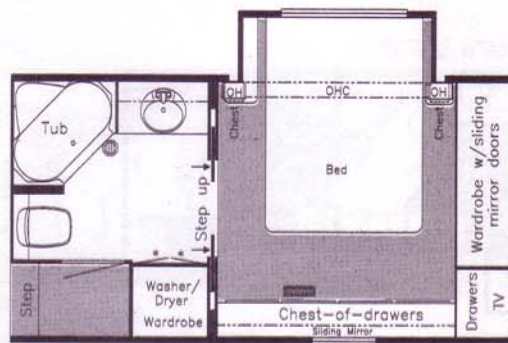


Prices, specifications, and floorplans are subject to change at Newmar's discretion without prior written notice or obligation. Some floorplans may show optional chairs or end tables. See dealer for availability.



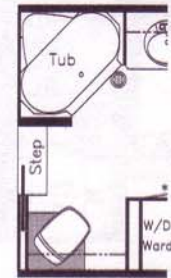
Option M437

Cabover S.O. w/dresser center and sliding doors
Available in: MAFW 34BKWB, 36RDDS, 36RDSK, 36RKLD, 36RLDS, 36RLAK, 38KSWB, 39BRCK, 39RLSE, 40CKDA



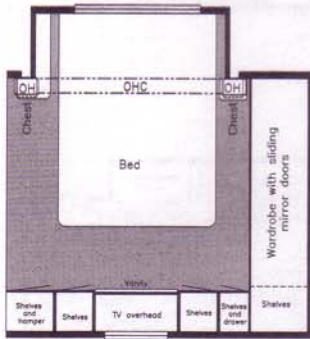
Option M398

Cabover S.O. w/dresser center and sliding doors
Available in: MAFW 38KSSA



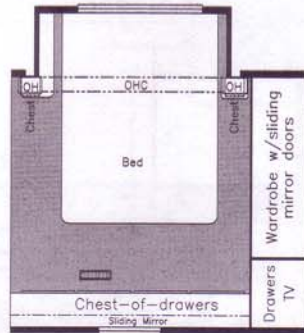
Option P160

Unenclosed stool room
Available in: MAFW 34BKWB, 36RDDS, 36RDSK, 36RKLD, 36RLDS, 36RLAK, 38KSWB, 39BRCK, 39RLSE, 40CKDA



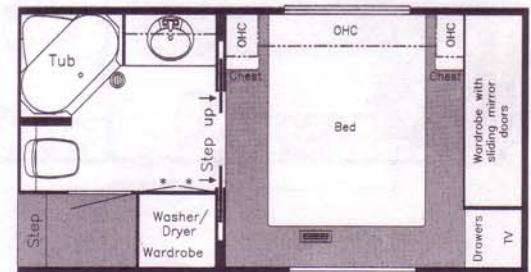
Option M660

Cabover S.O. w/vanity center
Available in: MAFW 32RKSS, 34RDCK, 36KSWB



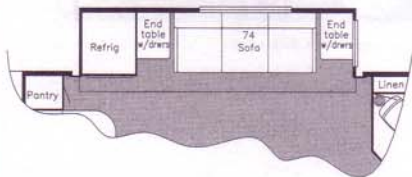
Option M650

Cabover S.O. w/dresser center
Available in: MAFW 32RKSS, 34RDCK, 36KSWB



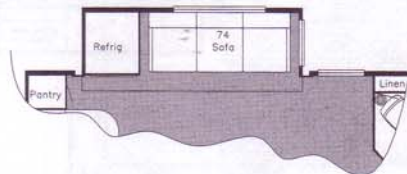
Option K995

Honeymoon suite w/sliding doors
Available in: MAFW 38KSSA



Option K540

Washer/dryer wardrobe delete w/larger S.O.
Available in: MAFW 32RKSS



Option K542

Washer/dryer wardrobe delete w/window
Available in: MAFW 32RKSS



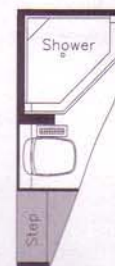
1999 FIFTH WHEEL



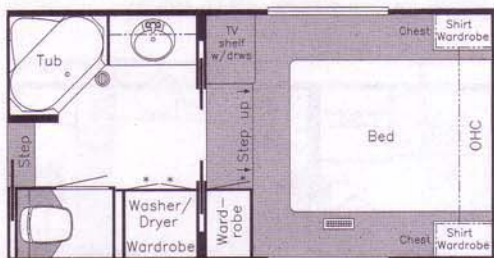
Option M720
Cabover S.O. w/throughside aisle
(N/A code states)
Available in: MAFW 38KSSA



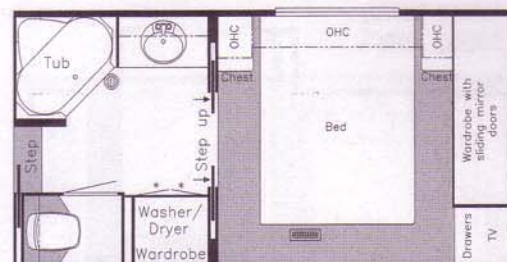
Option M730
Cabover S.O. w/vanity center and throughside aisle
(N/A code states)
Available in: MAFW 38KSSA



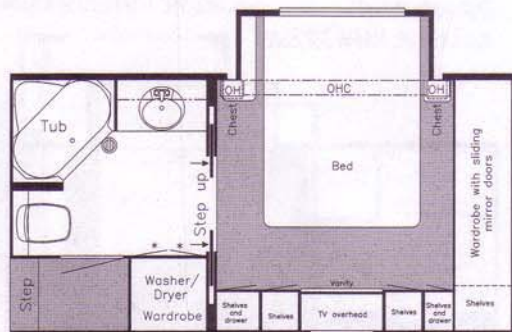
Option P091
38" corner shower ilo tub
Available in: MAFW 38KSSA



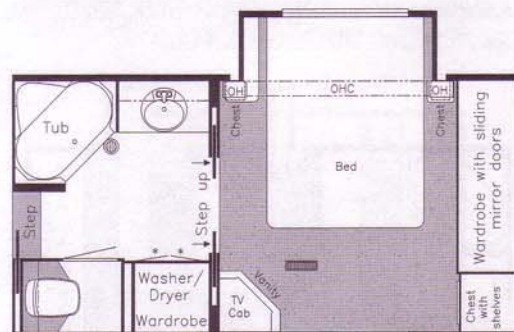
Option K990
Sliding doors ilo bifold
Available in: MAFW 34BKWB, 36RDDS, 36RDSK, 36RKLD, 36RLDS, 36RLAK, 38KSWB, 39BRCK, 39RLSE, 40CKDA



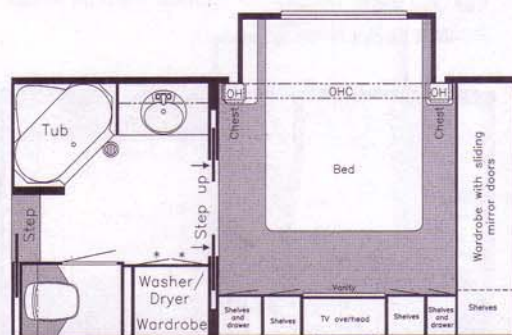
Option K994
Honeymoon suite w/sliding doors
Available in: MAFW 34BKWB, 36RDDS, 36RDSK, 36RKLD, 36RLDS, 36RLAK, 38KSWB, 39BRCK, 39RLSE, 40CKDA



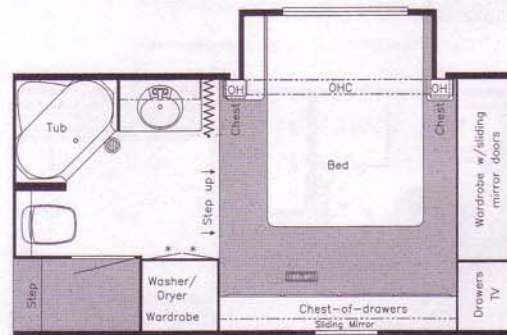
Option M398
Cabover S.O. w/vanity center and sliding doors
Available in: MAFW 38KSSA



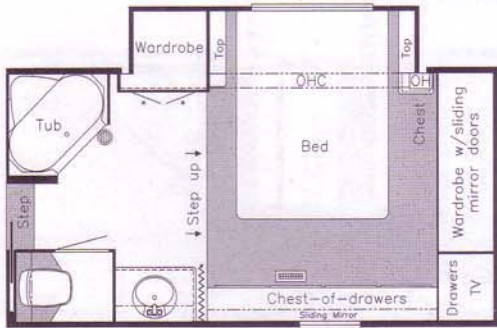
Option M617
Cabover S.O. w/sliding doors
Available in: MAFW 34BKWB, 36RDDS, 36RDSK, 36RKLD, 36RLDS, 36RLAK, 38KSWB, 39BRCK, 39RLSE, 40CKDA



Option M397
Cabover S.O. w/vanity center and sliding doors
Available in: MAFW 34BKWB, 36RDDS, 36RDSK, 36RKLD, 36RLDS, 36RLAK, 38KSWB, 39BRCK, 39RLSE, 40CKDA



Option M431
Cabover S.O. w/dresser center
Available in: MAFW 38KSSA



Option M621

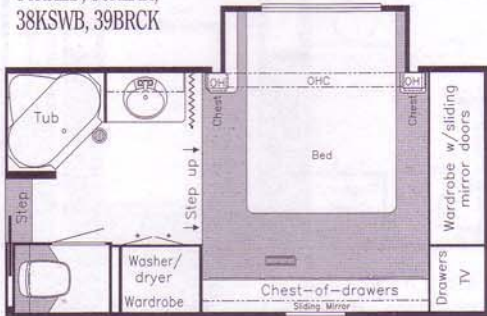
Large cabover S.O. w/dresser center

(N/A code states)

Available in: MAFW 34BKWB, 36RDDS, 36RDSK,

36RKLD, 36RLAK,

38KSWB, 39BRCK

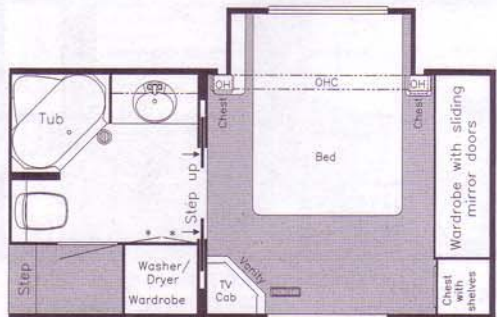


Option M430

Cabover S.O. w/dresser center

Available in: MAFW 34BKWB, 36RDDS, 36RDSK, 36RKLD, 36RLDS,

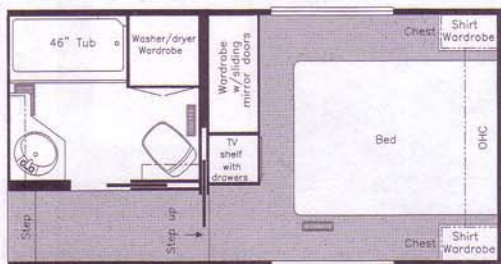
36RLAK, 38KSWB, 39BRCK, 39RLSE, 40CKDA



Option M618

Cabover S.O. w/sliding doors

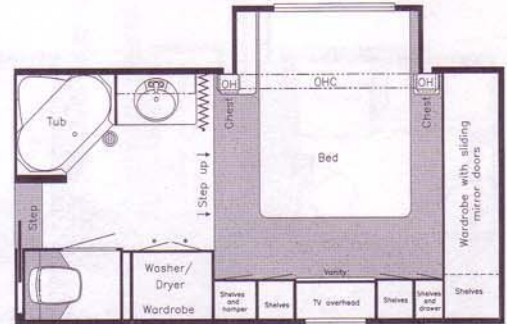
Available in: MAFW 38KSSA



Option K560

Throughside aisle bath (N/A code states)

Available in: MAFW 38KSSA



Option M390

Cabover S.O. w/vanity center

Available in: MAFW 34BKWB,

36RDDS, 36RDSK, 36RKLD, 36RLDS,

36RLAK, 38KSWB, 39BRCK, 39RLSE, 40CKDA

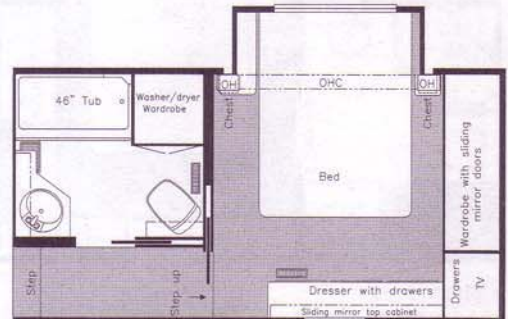


Option K561

Honeymoon suite w/throughside aisle

(N/A code states)

Available in: MAFW 38KSSA

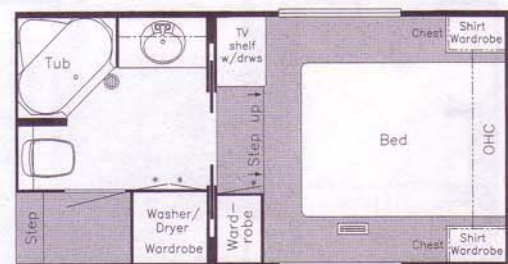


Option M740

Cabover S.O. w/dresser center and throughside aisle

(N/A code states)

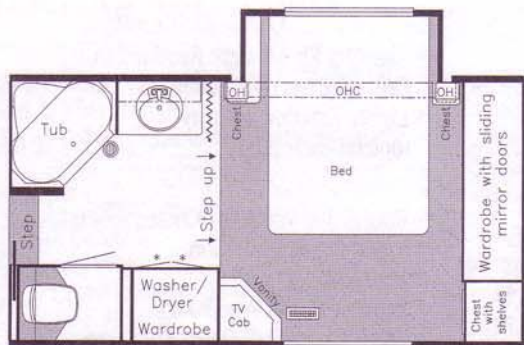
Available in: MAFW 38KSSA



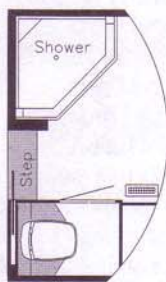
Option K991

Sliding doors ilo bifold

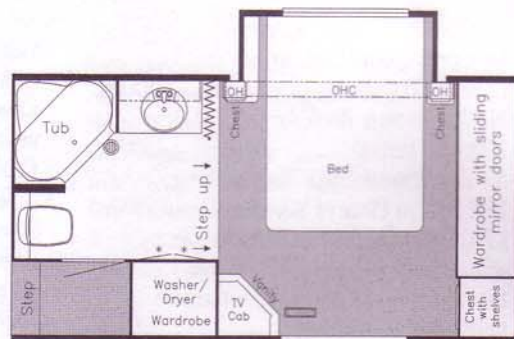
Available in: MAFW 38KSSA



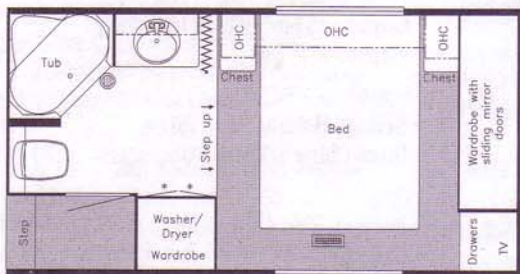
Option M610
Cabover S.O. w/80" bed
Available in: MAFW 34BKWB, 36RDDS, 36RDSK, 36RKLD, 36RLDS, 36RLAK, 38KSWB, 39BRCK, 39RLSE, 40CKDA



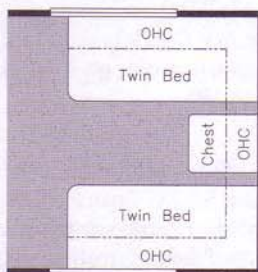
Option P090
38" corner shower ilo tub
Available in: MAFW 34BKWB, 36RDDS, 36RDSK, 36RKLD, 36RLDS, 36RLAK, 38KSWB, 39BRCK, 39RLSE, 40CKDA



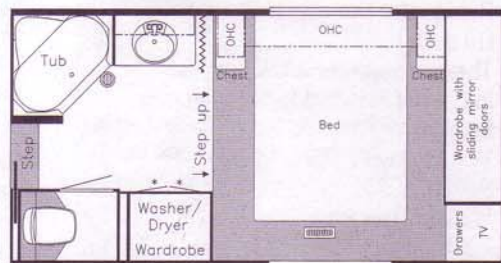
Option M611
Cabover S.O. w/80" bed
Available in: MAFW 38KSSA



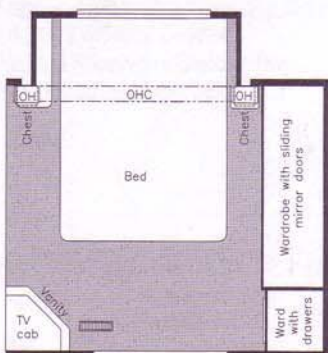
Option K341
Honeymoon suite
Available in: MAFW 38KSSA



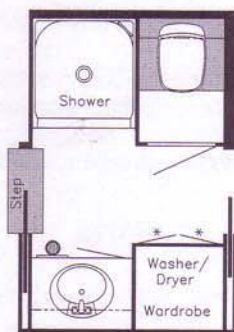
Option K082
75" twin beds
Available in: All MAFW'S



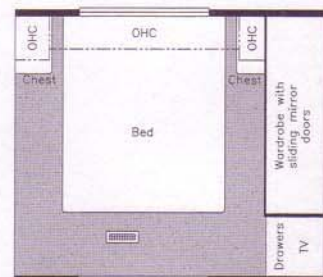
Option K340
Honeymoon suite
Available in: MAFW 34BKWB, 36RDDS, 36RDSK, 36RKLD, 36RLDS, 36RLAK, 38KSWB, 39BRCK, 39RLSE, 40CKDA



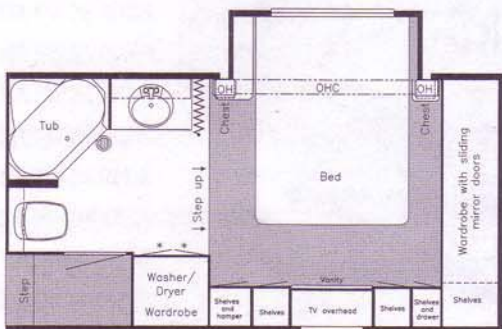
Option M380
Cabover S.O. w/80" bed
Available in: MAFW 32RKSS, 34RDCK, 36KSWB



Option P180
Enclosed stool room
Available in: MAFW 33RKWD, 33WRKD, 34RDCK, 36KSWB



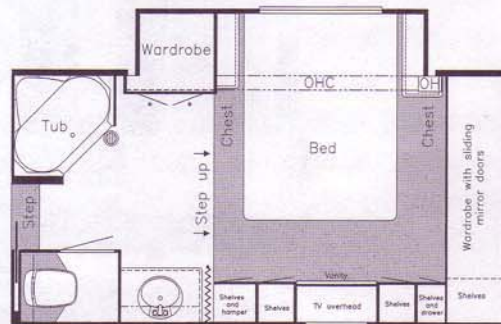
Option K010
Honeymoon suite
Available in: MAFW 38RKSS, 34RDCK, 36KSWB



Option M391
Cabover S.O. w/vanity center
Available in: MAFW 38KSSA



Option K370
Upper/lower bookcase ilo desk
Available in: MAFW 36RLDS



Option M620
Large cabover S.O. w/vanity center (N/A code states)
Available in: MAFW 34BKWB, 36RDDS, 36RDSK, 36RKLD, 36RLAK, 38KSWB, 39BRCK

OPTIONAL FEATURES

AIR CONDITIONING & HEATING WT

- Air Conditioner Brisk Air 13.5M BTU (extra) 95 lbs.
- Air Conditioner Brisk Air 15M BTU (extra) 100 lbs.
- Air Conditioner Brisk Air 15M BTU in Place of Standard 5 lbs.
- LP Gas Bottles 2-40 lbs. Aluminum w/Automatic Regulator-on Slides (27)
- LP Gas Bottles 2-40 lbs. w/Automatic Regulator-on Slides 20 lbs.

APPLIANCES & ACCESSORIES

- Ceiling Fan (in living area) 10 lbs.
- Icemaker Added to Dometic Refrigerator (not available on 36 RDDS, RLDS) 5 lbs.
- Microwave Oven 22" (not available on 39 BRCK, BRSK) 31 lbs.
- Refrigerator Dometic 1062 (10 cu. ft.) 91 lbs.
- Theataer Speakers w/12V Amplifier in Place of Standard Livingroom Area Speakers 3 lbs.
- VCR Prep w/TV Video Selector Switch 1 lbs.
- Washer/Dryer Prep 22 lbs.
- Washer/Dryer Sears 232 lbs.
- Water Heater 10 Gal. Gas/Electric w/Direct Spark Ignition 0 lbs.

CABINETS & FURNITURE

- Cabinetry Cherry Hardwood w/Raised Panel Doors 25 lbs.
- Cabinetry Frosted Maple Hardwood w/Raised Panel Doors 25 lbs.
- Cabinetry Oak Hardwood 25 lbs.
- Sofa Flexsteel Hide-A-Bed in Place of Standard Sofa (not available on 38 KSSA, KSWB, 40 CKDA) 27 lbs.
- Sofa Flexsteel w/Dual Incliners & Snack Tray in Place of Standard Sofa (not available on 38 KSSA, KSWB, 40 CKDA)

CHASSIS FEATURES

- Spare Tire 90 lbs.
- Tandem Axle Dual Wheels w/Torflex Suspension (available on 36 RDDS, RLDS, 38 KSSA, KSWB, 39 BRCK, RLSE, 40 CKDA) 212 lbs.
- Tandem Axle Dual Wheels w/Torflex Suspension (available on 36 RDSK, RKLD, RLAK) 212 lbs.

ELECTRICAL FEATURES

- Battery Disconnect Switch 1 lbs.
- Generator 5.5 KW Onan Marquis w/Automatic Changeover & Battery 297 lbs.
- Generator Prep (automatic changeover & carbon monoxide detector) 1 lbs.

ELECTRICAL FEATURES (CONT.)

- Lighting Fluorescent Recessed in Ceiling & Overhead Cabinets 1 lb.
- Lights Exterior Security (one on each side) 2 lbs.

EXTERIOR FEATURES

- Roof & Top Wrap Gel-Coated Fiberglass w/1/4" Foam Insulation 2 lbs.
- Roof Rack & Ladder 4 lbs.
- Snaps for Fifth Wheel Jacks 1 lb.
- Stone Guard Pull Down Vinyl Recessed in Front Fiberglass Cap 15 lbs.

INTERIOR FEATURES

- Floor Covering-High Pressure Laminated 15" Tile In Kitchen & Foyer Area 30 lbs.
- Floor Covering-High Pressure Laminated Simulated Plank in Kitchen & Foyer 30 lbs.

PLUMBING/BATH FEATURE

- Sewage Holding Tank Rinse 1 lb.
- Stool China w/Spray Attachment 31 lbs.

WINDOWS, AWNINGS & VENTS

- Awning-Side A&E 8500 110 lbs.
- Door Bell 2 lbs.
- Skylight in Bathroom w/Soft Shade 2 lbs.
- Vent-Fantastic w/Rain Sensor in Place of Standard Bath Vent 1 lb.



1999 FIFTH WHEEL

STANDARD FEATURES

AIR CONDITIONING & HEATING

- Air Conditioner Central Brisk Air 13.5M BTU (1)
- Heat In Floor Ducted
- LP Gas Bottles 2-30# w/Automatic Regulator

APPLIANCES & ACCESSORIES

- Cable TV Connection
- LP Leak Detector
- Microwave Prep
- Range Cover Laminated w/Matching Countertop Material
- Range Hood w/Light & Fan
- Range Recessed 3-Burner w/Black Glass Oven Door & Electronic Ignition
- Refrigerator Dometic Royale 3862 (8 cu. ft.)
- Refrigerator Front Hardwood Raised Panel
- Satellite Dish Prep Only-w/RG 6 Coaxial, Phone/TV Jack & 110V Recept
- Stereo AM/FM Cassette w/Clock
- Telephone Connection w/1 Phone Jack
- TV Antenna w/Power Booster & 2 Jacks
- Water Heater 10 Gal. Gas/Electric w/Reigniter

CABINETS & FURNITURE

- Cabinetry w/Oak Raised Double Arched Panel Doors
- Chair End Table
- Chair Flexsteel Swivel Glider/Recliner
- Corian Countertop Color Coordinated Edge & Integrated Porcelain Lavatory Bowl in Bath
- Corian Countertop in Kitchen w/Color Coordinated Edge & Stainless Steel Sink
- Dinette Table w/Hardwood Top & Four Chairs
- Drawers w/Metal Guides
- Molded Silverware Divider Tray
- Sofa Flexsteel Hide-A-Bed

CHASSIS FEATURES

- Easy Lube Equalizers
- Frame Size 12" I-Beam & Molded Wrap Maximum Storage
- Shock Absorbers
- Skid Bars for Rear Bottom Protection

ELECTRICAL FEATURES

- Battery (2-12V) on Pull-Out Tray
- Converter 75 AMP w/Charger
- Electrical Service 50 AMP
- Lights in Wardrobes
- Recepts 110V w/Ground Fault Interrupter (interior & exterior)

EXTERIOR FEATURES

- Exterior Front & Rear Gel-Coated Fiberglass End Caps
- Exterior Sides Gel-Coated Fiberglass
- Exterior Storage in Rear Cap (not available on bay window floorplans)
- Jacks Stabilizer (1 pair)
- Power Front Jacks
- Roof Rubber w/9MM Decking
- Slideout Large w/Patented Flat Floor

INTERIOR FEATURES

- Ceiling Woven Soft Touch
- Decorative Border in Kitchen & Bath Area
- Decorative Wall Clock & Mirror
- Floor Covering-Carpet Staintech, 40 oz. 100% Nylon Plush Saxony w/Stainmaster Finish
- Floor Covering-Carpet w/Pad Living Room & Bedroom
- Floor Covering-Vinyl in Kitchen, Bath & Foyer
- Sink Covers-Two
- Smoke Detector & 5 BC Fire Extinguisher
- Window Treatment Day/Night Pleated Shades & Lined Drapes
- Window Treatment Mini Blinds (kitchen)

PLUMBING/BATH FEATURES

- Bath Accessories Brass (1 each-towel bar, tissue holder, towel ring & robe hook)
- Monitor Panel
- Stool Aqua Magic IV
- Tub/Shower Fiberglass w/Enclosure
- Tub/Shower Wall Light
- Winterize Convenience Package (w/water heater bypass)

CONSTRUCTION FEATURES

- Insulation Fiberglass R7 Sidewalls, R19 Floor & Roof
- Insulation Foam 5/8" Laminated in Sidewalls & Ceiling
- Rear Bumper w/Slideout Tray for Spare Tire
- Structure-101" Widebody
- Structure-Aluminum Sidewalls & Roof, 16" on Center
- Underbelly Enclosed Aluminum w/Laminated 5/8" Foam

WINDOWS, AWNINGS & VENTS

- Radius Entrance Door w/Deadbolt & Lighted Step
- Radius Windows w/Dark Tinted Safety Glass
- Step-Triple
- Vent-Power in Bath Area w/Wall Switch

BEDROOM FEATURES

- Bed Queen (60" x 80")
- Bedspread Quilted w/Reversed Sham & Accent Pillow
- Lifts for Convenient Storage Under Fixed Bed

MOUNTAIN AIRE® FIFTH WHEEL SPECIFICATIONS

Unit	No. Axles	Axle Cap	Tire	GAWR (lbs)	GVWR (lbs)	Length	Height	Width	Weight (lbs)	Hitch Weight (lbs)	Fresh Water Cap.	Grey Water Cap.	Sewage Water Cap.	Heating Capacity
MA FW 32 RKSS	2	7000	235-85-R 16G	7000	15000	32'-11"	12'-3"	101"	11535	2538	68 Gal.	84 Gal.	42 Gal.	42,000 btu
MA FW 34 BKWB	2	7000	235-85-R 16G	7000	15000	35'-4"	12'-3"	101"	11581	2316	100 Gal.	50 Gal.	50 Gal.	42,000 btu
MA FW 34 RDCK	2	7000	235-85-R 16G	7000	15000	35'-8"	12'-3"	101"	11677	1985	100 Gal.	50 Gal.	50 Gal.	42,000 btu
MA FW 36 RDDS	3	6000	235-85-R 16E	6000	18000	37'-2"	12'-3"	101"	13577	2580	75 Gal.	100 Gal.	50 Gal.	55,000 btu
MA FW 36 RDSK	2	7000	235-85-R 16G	7000	15000	37'-2"	12'-3"	101"	12155	2674	75 Gal.	100 Gal.	50 Gal.	55,000 btu
MA FW 36 RKLD	2	7000	235-85-R 16G	7000	15000	37'-2"	12'-3"	101"	12109	2059	75 Gal.	100 Gal.	50 Gal.	55,000 btu
MA FW 36 RLAK	2	7000	235-85-R 16G	7000	15000	37'-2"	12'-3"	101"	11919	1788	75 Gal.	100 Gal.	50 Gal.	55,000 btu
MA FW 36 RLDS	3	6000	235-85-R 16E	6000	18000	37'-2"	12'-3"	101"	13786	2481	75 Gal.	100 Gal.	50 Gal.	55,000 btu
MA FW 38 KSSA	3	6000	235-85-R 16E	6000	18000	37'-11"	12'-3"	101"	13553	2304	75 Gal.	100 Gal.	50 Gal.	55,000 btu
MA FW 38 KSWB	3	6000	235-85-R 16E	6000	18000	37'-11"	12'-3"	101"	13568	2442	75 Gal.	100 Gal.	50 Gal.	55,000 btu
MA FW 39 BRCK	3	6000	235-85-R 16E	6000	18000	39'-2"	12'-3"	101"	12566	2262	75 Gal.	100 Gal.	50 Gal.	55,000 btu
MA FW 39 RLSE	3	6000	235-85-R 16E	6000	18000	39'-2"	12'-3"	101"	13451	2152	75 Gal.	100 Gal.	50 Gal.	55,000 btu
MA FW 40 CKDA	3	6000	235-85-R 16E	6000	18000	40'-11"	12'-3"	101"	13291	2127	75 Gal.	100 Gal.	50 Gal.	55,000 btu

Length, Heights, Widths, Dry Weights and Hitch Weights are Approximate. Weight will vary based on optional equipment added to the above base weight.



1999 FIFTH WHEEL



1999 CLASS A MOTORHOME



1999 DIESEL PUSHER





1999 5TH WHEEL

1999 DIESEL PUSHER

1999 CLASS A MOTORHOME

Newmar® is proud to offer you the finest line of recreational vehicles available. Our tradition of designing and building quality recreational vehicles has long been

recognized along with the fact that our own participation in recreational vehicle living gives us the experience and knowledge to build superior products for our customers.

We appreciate your taking the time to look over our brochure and products at our authorized dealer showrooms. We sincerely hope to earn you as one of

our many happy customers who have learned that Newmar is An American Tradition of Excellence.

Mahlon Miller
Chairman of the Board

We invite you to visit our state of the art production facility in Nappanee, Indiana.

Plant tours are offered at
10:00 a.m. and 1:00 p.m.,
Monday through Friday.

Newmar Kountry Klub

Don't forget to check out the Klub—the Newmar® Kountry Klub, that is. All you need for eligibility is to be a proud owner of any of the fine Newmar® recreational vehicles.



An American Tradition Of Excellence

355 N DELAWARE ST • PO BOX 30
NAPPANEE IN 46550-0030
PHONE 219 773-7791 • FAX 219 773-2895
<http://www.newmarcorp.com>



Compliments of:



2}

NEW MAR PRIDE SHOWS IN EVERY CABINET WE BUILD



Our cabinet shop is a true source of Newmar's pride in skilled craftsmanship, where each piece is created, on-site, by caring hands.



3}



4}

1} Open up your flat floor slideout and you will discover an elegant open space designed for living and dining in Newmar's luxury.
2} The elegant tones of Washington Cherry

throughout the spacious kitchen give an inviting look. 3} Comfort and style are an integral part of the Mountain Aire. 4} The driver and passenger seats are enlarged for

added comfort. A hued woodgrain dash puts everything within easy reach. 5} Corian® countertops are standard as well as our fine cabinets. 6} Lots of storage and

cabinet space have been included in the master bedroom. 7} A beautiful desk with overhead cabinetry complements the handsome entertainment center.



5}



6}



7}



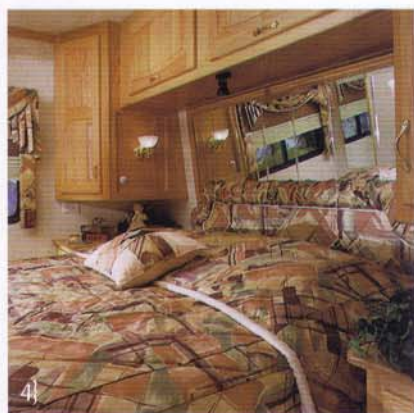
Who says you can't take it with you? Isn't that the whole idea behind a fully appointed motorhome? All the comforts of home and no lack of creature features. Mountain Aire® Diesel Pushers bring a new standard of motorhome living to the leisure world with the 1999 lineup. Select

from five exciting 40' models that are built on our 101" widebody chassis. All of these great models are available in a choice of five interiors with three excellent woodgrains—Light Honeyed Oak, Frosted Maple and Washington Cherry. Sleek lines are beautifully captured in your

choice of three fully painted exteriors. When you put it all together—you can take the best with you.

Newmar's Mountain Aire® Diesel Pusher—see the new standard at your Newmar® dealer soon.





1} The living room and dining room are elegantly combined in the patented flat floor slideout. 2} Large driver and passenger seats assure a comfortable place to guide you on your way. 3} A new, improved dash incorporates a

worktop station. 4} Matching bed-spread, pillow and window treatments enhance the beauty of the Mountain Aire® master bedroom. 5} A well planned bath means plenty of storage and plenty of room. 6} In this popular

floor plan, the kitchen and living area are incorporated into the big slideout. 7} A large chaise swivel recliner is an excellent option in the Mountain Aire® Class A. 8} A beautiful dinette is surrounded by fine Newmar® cabinetry.



NEWMAR SLIDEOUTS A TRAVELING SUCCESS



There are a lot of slideout rooms, but there is just one Newmar®. It's a Newmar® exclusive. We pioneered it in 1990, we perfected it. To prove it, we urge you to visit your Newmar® dealer. He will show you the Newmar® difference. You will see the room move to its full extension. Instead of stopping at that same level, the entire room quietly lowers to match the main floor...FLAT, FLUSH and FIRM. That's why it's patented.





You know the right decisions are based on a full review of the facts. But sometimes, pure passion takes over. Best of all is when both sound reasoning and impulse say yes. That's when the choice is easy—and you go for the finest in Class A Motorhome value—the Mountain Aire® from Newmar®. Because our motorhomes are built better,

every Mountain Aire® carries our famous three year warranty. With eight great floor plans, three sleek exterior graphic exteriors and five interior options, your choice won't be easy. So, let your passion and impulse go shopping for the best value available. You can choose from three elegant woodgrains: Light Honeyed

Oak, Frosted Maple and Washington Cherry, that blend harmoniously with Mountain Aire's distinctive

interior appointments, all of which you can experience for yourself at your Mountain Aire® dealer.





1-2} The Mountain Aire Fifth Wheel incorporates our patented flush floor slideout to provide added room for your comfort. As a great option, you can select our new sofa with dual incliners and drop down snack tray. 3} A kitchen like this one is usually only seen in designer magazines. There are plenty of beautiful cabinets plus our practical

Corian® countertops. The cooktop features electronic ignition and sealed burners and the microwave has been lowered this year for added convenience. 4} We've incorporated a desk conveniently located adjacent to the kitchen. 5-6} The big master bedroom has a walk-around, queen size bed plus plenty of rich cabinetry and storage

areas. 7} Two plush swivel recliners provide great comfort in the spacious bay window arrangement. 8} Storage space has always been a Mountain Aire hallmark. There's even a built-in TV (optional). 9} A flip-down desk that houses your computer is built-in alongside a complete entertainment center designed to hold a 27" TV.





Clearly the best designed, best built Fifth Wheels on the market today are the 1999 Mountain Aire® models from Newmar®. There are thirteen great floor plans in lengths from 32' up to 40' to choose from. For 1999, the Mountain Aire® Fifth Wheel features all new graphics in

two color choices. Inside you can choose from five interiors with three great woodgrain selections: Light Honeyed Oak, Frosted Maple and Washington Cherry. The Mountain Aire® Fifth Wheel line-up is comprised of more than just great styles. Its uncompromised

structural quality sets it apart from the competition. All welded aluminum side-walls and truss-style rafters built 16" on center,

combined with a 2" x 3" floor with decking and a 12' I-beam framework, guaranteed structural quality.

