

2000 AMERICAN STAR BY NEWMAR

American Star



TRAVEL TRAILER • FIFTH WHEEL



American Star's family of travel trailers for 2000 offers style, versatility, functionality and performance. But, more important, each offers the kind of quality that has made the American Star® from Newmar® such a great value.

On the outside, the smooth Filon® exterior sidewall skin displays our brand new contemporary graphics that set the American Star apart from other travel trailers. Inside, you'll find three interior color schemes to choose from - Ruby Dusk, Summer Mint and Dusk Blue - that make a spacious, rich statement in an interior that is 4" taller than previous American Star models.

No matter which American Star you choose - you've come to the right place for real value in Newmar's Tradition of Excellence.



V E L T R A I L E R B Y N E W M A R

1) The spacious patented flat-floor slideout is standard equipment on the American Star®. Our Dusk Blue interior color scheme is enhanced by an optional lambrequin window treatment.

2) Handcrafted cabinetry is available in Light Oak as standard, or Snow Maple (shown here) as an option.



2)

3) Adjacent to the dining room is a custom entertainment system with an area big enough to hold a 25" TV.

4) Optional day/night pleated shades and recliners add a special touch to your relaxing area.



3)



4)



5)

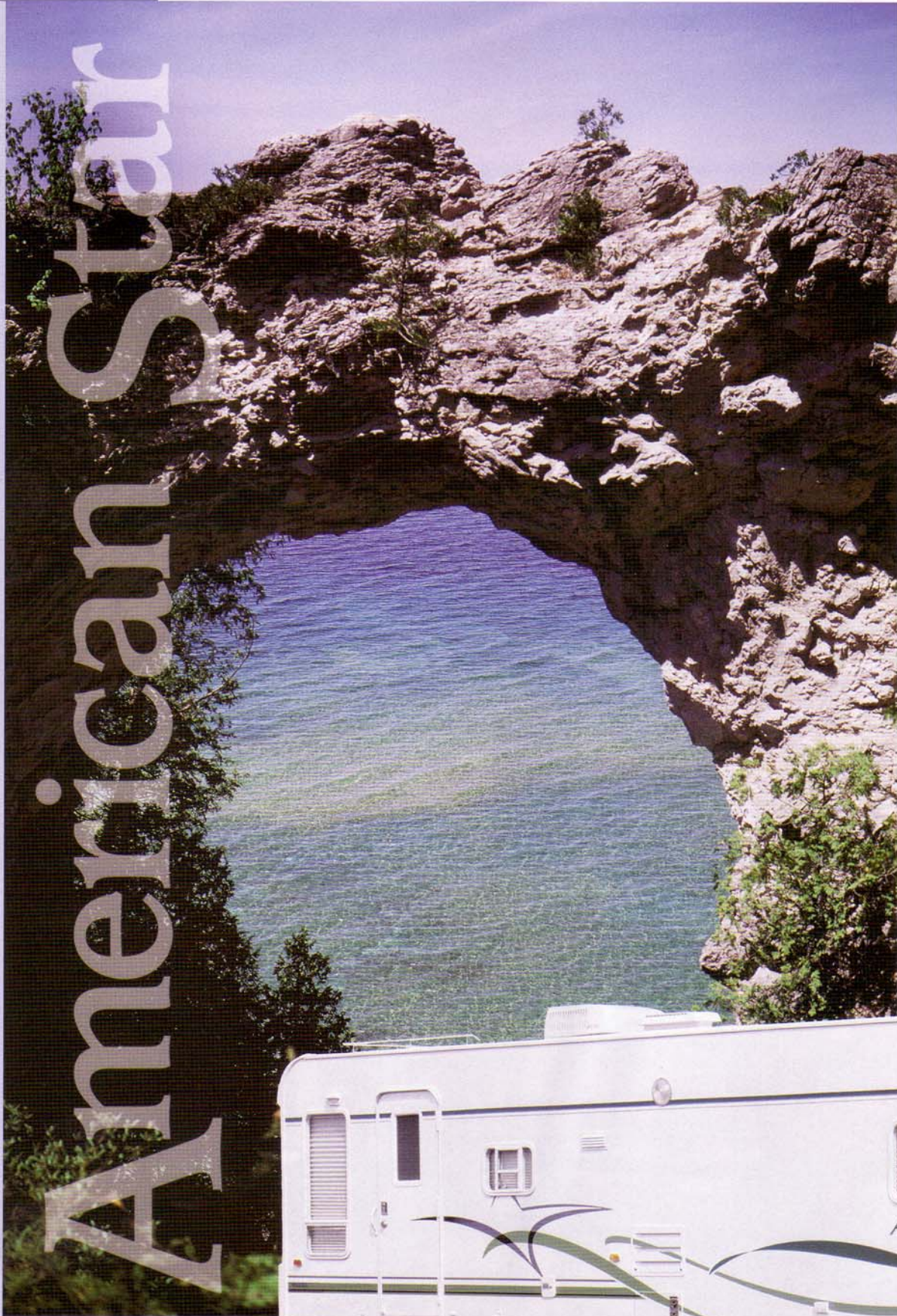


6)

5) Our Ruby Dusk interior sets a gracious tone for family and friends in our big flat-floor slideout room.

6) Note how the master bedroom expands with this well designed slideout.

2000 AMERICAN S T A



R C O N S T R U C T I O N

We love an educated consumer. The more you know about recreational vehicles, the more you'll appreciate ours. Some manufacturers might call our recreational vehicles "over built" - but that's a compliment to us. We make no apologies for building the finest recreational vehicles in the world.

Although Newmar® recreational vehicles are created and assembled in one of the largest and most advanced facilities, it's talented people that build our products.

We are located in the heart of Amish Country in Nappanee, Indiana. Our employees blend old world craftsmanship with new technological advances that set our products apart.



It's a simple process for you to verify the quality of our products. The first step is to visit your

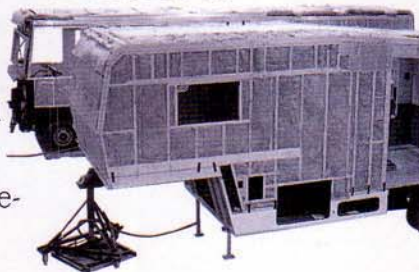
American Star Dealer and examine one of our fine

products for yourself. Then ask a Newmar owner and learn first hand from someone who has experienced Newmar quality.

American Star® Travel Trailers and Fifth Wheel units feature rugged wood sidewalls and roof construction and are built 16" on-center. There's R7 insulation in the sidewalls and floor and R11 in the roof. The slide-out models are built on a sturdy 12" I-beam frame.



Now you're ready for the final and most enjoyable step - choosing an American Star model that suits you. We challenge you to compare the quality of our American Star models to any other, because we're sure you'll agree - there is none better than the best - American Star from Newmar.



American Star



The American Star® Fifth Wheel travel trailer is a real hit thanks to its sensational styling, great color schemes and spacious interiors. When you choose the remarkably affordable American Star, you've selected the best value in a fifth wheel travel trailer on the market today. They all feature our new contemporary exterior graphics on sleek, smooth Filon® exterior sidewalls. Give your family and friends years of fun RVing in an American Star Fifth Wheel from Newmar®.



F T H W H E E L B Y N E W M A R

1) Our Summer Mint interior color scheme sets a beautiful stage in the slideout room.

2) A convenient desk with coordinating top makes for a great place to write home to friends and family.



2)



3)

3) Our standard light oak cabinetry plus a built-in 22" 1.0 cf microwave and a range with piezo ignition make this American Star® kitchen a real favorite.

4) Don't spend all your time inside relaxing in these handsome recliners, though it certainly would be easy to do.



4)



6)

5) A warm and inviting American Star® slideout room is tastefully done in our popular Ruby Dusk interior color scheme.

6) A walk-around queen-size bed and plenty of cabinetry are well-planned in the master bedroom.

7) No space is wasted. Our designers have included many beautiful amenities such as this entertainment center.



7)

2000

AMERICAN STAR BY NEWMAR

American Star

For more than three decades, Newmar® has been building America's most popular recreational vehicles. Right from the start - customers like you recognized that a Newmar recreational vehicle was something special. In a world of cookie-cutter RVs, a Newmar product has always stood out for its innovative features, outstanding performance and unparalleled quality. And, while we're proud of our tradition of excellence, we won't rest on our laurels. We're constantly refining our recreational vehicles to make them even better. We believe the models featured in this catalog are the finest we've ever built.

Thanks for taking the time to look over our products. We sincerely hope you will become one of our many satisfied customers who have learned that Newmar truly is An American Tradition of Excellence.



Mahlon Miller
Chairman of the Board

We invite you to visit our state of the art production facility in Nappanee, Indiana.

Plant tours are offered at
10:00 a.m. and 1:00 p.m.,
Monday through Friday.

Newmar Kountry Klub

Don't forget to check out the Klub—the Newmar Kountry Klub, that is. All you need for eligibility is to be a proud owner of any of the fine Newmar recreational vehicles.



Compliments of:



An American Tradition Of Excellence

355 N DELAWARE ST • PO BOX 30

NAPPANEE IN 46550-0030

PHONE 219 773-7791 • FAX 219 773-2895

<http://www.newmarcorp.com>

2000 AMERICAN STAR BY NEWMAR

American Star



TRAVEL TRAILER • FIFTH WHEEL

TRAVEL TRAILER STANDARD FEATURES

Air Conditioning & Heating

- 2-30# LP Gas Bottles w/Automatic Regulator
- Gas Bottle Cover
- 13.5M Brisk Ducted Air Conditioner
- LP Leak Detector

Appliances & Accessories

- 6 Gal. Gas/Electric Water Heater w/Direct Spark Ignition
- 22" Microwave
- 3-Burner Range w/Oven (piezo ignition)
- AM/FM Stereo w/Cassette
- Bi-fold Range Cover
- Cable TV Connection w/RG6 Coaxial
- Dometic 2852 Refrigerator (8 cu ft)
- Hardwood Raised Panel Refrigerator Front
- Range Hood w/Light & Fan
- Telephone Connection w/1 Phone Jack
- TV Antenna w/Power Booster & 2 Jacks

Cabinets & Furniture

- Flexsteel Jack Knife Sofa
- Lifts On Bed Top To Access Storage Area
- Oak Hardwood Raised Panel Doors On Overhead Cabinets, Flat Panel Doors On Base Cabinets

Electrical Features

- 55 AMP Converter w/Charger
- 12 Volt Battery

Exterior Features

- Aluminum Bumper Cover
- Filon Fiberglass Exterior Sides
- Gel-Coated Fiberglass End Caps
- Safety Chains
- Stabilizer Jacks (2 pair)

Interior Features

- Vinyl Floor In Kitchen, Foyer & Bath Area
- Decorative Wall Clock
- Mini Blinds (throughout)

Interior Features (Cont.)

- Quilted Bedspread w/Reverse Sham (1)
- Smoke Detector & 5 BC Fire Extinguisher

Plumbing/Bath Features

- Aqua Magic IV Stool
- Monitor Panel
- Tub/Shower Surround w/Enclosure
- Water Heater Bypass System

Construction Features

- 12" I-Beam Frame (slideout floorplans)
- Enclosed Underbelly w/Fiberglass Insulation (standard on floorplans w/slideout)

Windows, Awnings & Vents

- Power Vent In Bath Area w/Wall Switch

TRAVEL TRAILER OPTIONAL FEATURES

Appliances & Accessories

- Dometic 3862 Refrigerator (8 cu ft)
- Add On CD Player
- 10 Gal. Gas/Electric Water Heater w/Direct Spark Ignition
- Sears Washer/Dryer w/50 AMP Electrical Service

Cabinets & Furniture

- Flexsteel Petite Swivel/Rocker Recliner
- Snow Maple Cabinets

Electrical Features

- 50 AMP Electrical Service
- Fluorescent Lights In Living Room & Kitchen Area

Exterior Features

- Roof Rack & Ladder
- Power Front Hitch
- Synthetic Rubber Roof w/9MM Decking
- Painted Exterior Bottom Wrap

Interior Features

- Lambrequin Window Treatment
- Simulated Plank Floor In Kitchen & Foyer Area
- Day/Night Pleated Window Shades Living/Bedroom Area

Plumbing/Bath Features

- Fiberglass Tub/Shower

Construction Features

- Aluminum Sidewalls & Roof Construction, 16" On Center

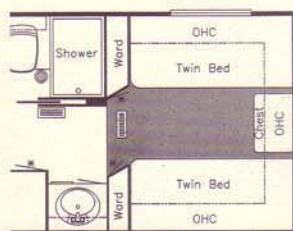
Windows, Awnings & Vents

- Carefree Fiesta Side Awning
- Fantastic Vent w/Rain Sensor In Kitchen
- Skylight In Bathroom (located above tub/shower)

Towable Chassis Features

- Spare Tire w/Carrier & Cover

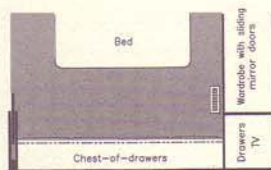
TRAVEL TRAILER OPTIONAL FLOORPLANS



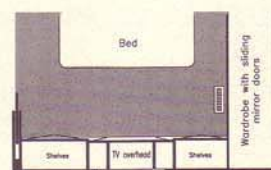
K086
75" Twin beds - ASTT
33RLWB



M221
Vanity center - ASTT
33RBSB



M222
Dresser center - ASTT
33RBSB

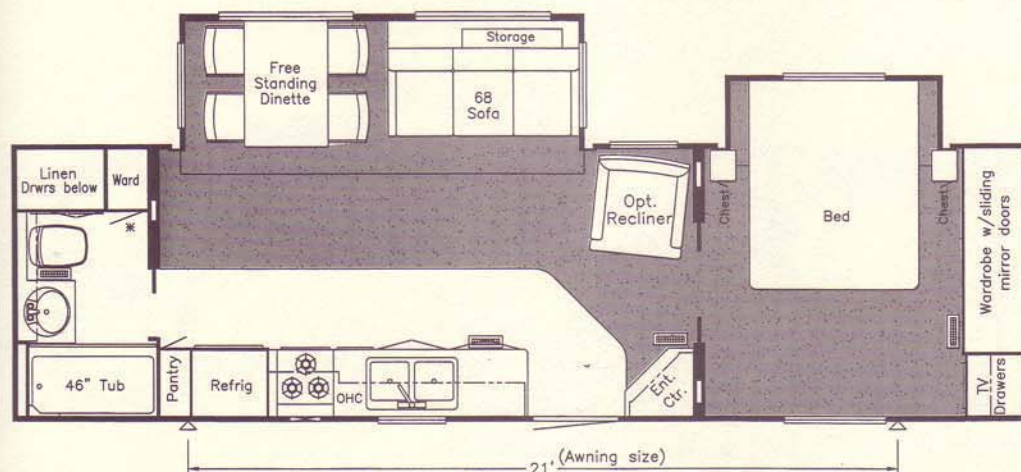


M220
Vanity over dresser center -
ASTT 33RBSB

American Star® Travel Trailer

Model	Axles	Axles Cap	Tire Size	GAWR	GVWR	Length	Height	Width	Approx. Dry Weight	Approx. Hitch Weight	Fresh Water	Grey Water	Sewage Cap	Approx. Hitch Height	Heat Cap
ASTT33RBSB	2	5200	225-75-R15D	5080	11250	34'	10' 10"	100"	9284 lbs	939 lbs	42 gal	42 gal	42 gal	23"	30000
ASTT33RLWB	2	5200	225-75-R15D	5080	11250	33' 3"	10' 10"	100"	9147 lbs	934 lbs	42 gal	42 gal	42 gal	23"	30000

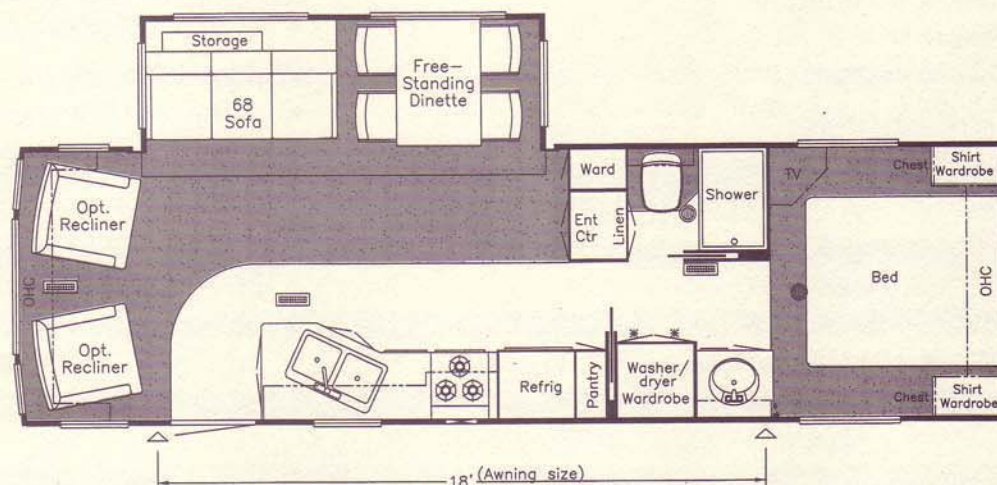
Lengths, Heights, Widths, Dry Weights and Hitch Weights are approximate. Weight will vary based on optional equipment added to the above base weight.



AS 33 RBSB-TT

AMERICAN STAR TRAVEL TRAILER INSULATION "R" VALUES

Roof	Sidewalls	Floor
R-13	R-9	R-11



AS-33 RLWB-TT

Prices, specifications, and floorplans are subject to change at Newmar's discretion without prior written notice or obligation. Some floorplans may show optional chairs or end tables. See dealer for availability.

FIFTH WHEEL STANDARD FEATURES

Air Conditioning & Heating

- 2-30# LP Gas Bottles w/Automatic Regulator
- 13.5M Brisk Ducted Air Conditioner
- LP Leak Detector

Appliances & Accessories

- 6 Gal. Gas/Electric Water Heater w/Direct Spark Ignition
- 22" Microwave
- 3-Burner Range w/Oven (piezo ignition)
- AM/FM Stereo w/Cassette
- Bi-fold Range Cover
- Cable TV Connection w/RG6 Coaxial
- Dometic 2852 Refrigerator (8 cu ft)
- Hardwood Raised Panel Refrigerator Front
- Range Hood w/Light & Fan
- Telephone Connection w/1 Phone Jack
- TV Antenna w/Power Booster & 2 Jacks

Cabinets & Furniture

- Flexsteel Jack Knife Sofa
- Dinette Table w/Hardwood Top & Four Chairs
- Lifts On Bed Top To Access Storage Area
- Oak Hardwood Raised Panel Doors On Overhead Cabinets, Flat Panel Doors On Base Cabinets

Electrical Features

- 55 AMP Converter w/Charger
- 12 Volt Battery

Exterior Features

- Aluminum Bumper Cover
- Filon Fiberglass Exterior Sides
- Gel-Coated Fiberglass End Caps
- Power Front Jacks
- Stabilizer Jacks (1 pair)

Interior Features

- Vinyl Floor In Kitchen, Foyer & Bath Area
- Decorative Wall Clock
- Mini Blinds (throughout)
- Quilted Bedspread w/Reverse Sham (1)
- Smoke Detector & 5 BC Fire Extinguisher

Plumbing/Bath Features

- Aqua Magic IV Stool
- Monitor Panel
- Tub/Shower Surround w/Enclosure
- Water Heater Bypass System

Windows, Awnings & Vents

- Power Vent In Bath Area w/Wall Switch

FIFTH WHEEL OPTIONAL FEATURES

Appliances & Accessories

- Ceiling Fan In Living Room Area
- Dometic 3862 Refrigerator (8 cu ft)
- Add On CD Player
- 10 Gal. Gas/Electric Water Heater w/Direct Spark Ignition
- Sears Washer/Dryer w/50 AMP Electrical Service

Cabinets & Furniture

- Flexsteel Recliner
- Snow Maple Cabinets

Electrical Features

- 50 AMP Electrical Service
- Fluorescent Lights In Living Room & Kitchen Area

Exterior Features

- Roof Rack & Ladder
- Snaps For Fifth Wheel Jacks
- Synthetic Rubber Roof w/9MM Decking
- Painted Exterior Bottom Wrap

Interior Features

- Lambrequin Window Treatment
- Simulated Plank Floor In Kitchen & Foyer Area
- Day/Night Pleated Window Shades Living/Bedroom Area

Plumbing/Bath Features

- Fiberglass Tub/Shower

Construction Features

- Aluminum Sidewalls & Roof Construction, 16" On Center

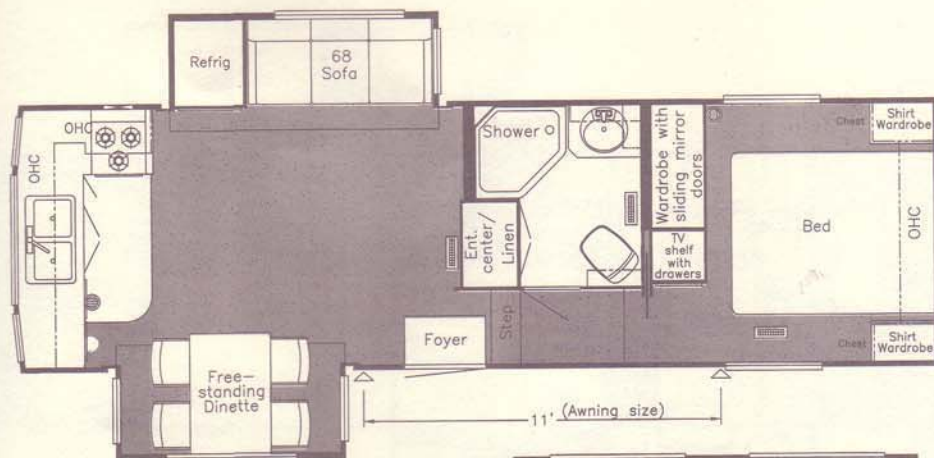
Windows, Awnings & Vents

- Carefree Fiesta Side Awning
- Fantastic Vent w/Rain Sensor In Kitchen
- Skylight In Bathroom (located above tub/shower)

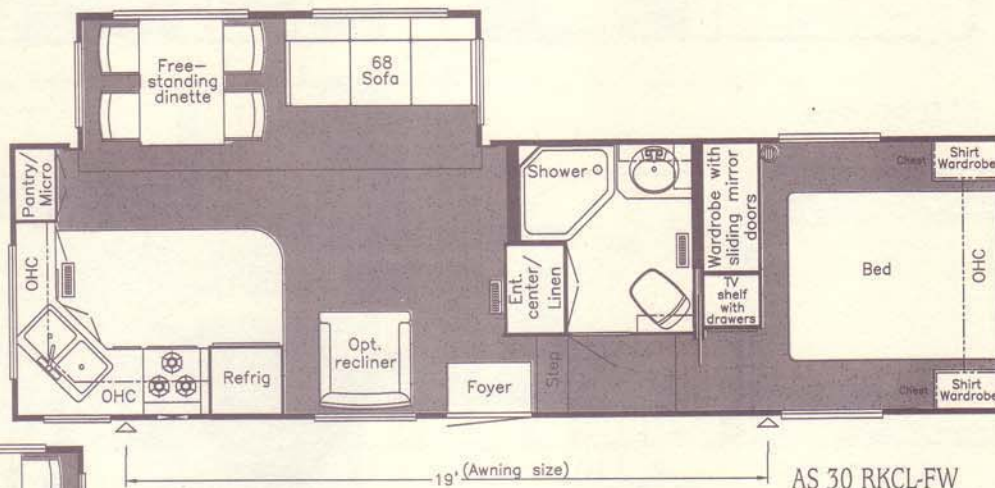
Towable Chassis Features

- Spare Tire w/Carrier & Cover

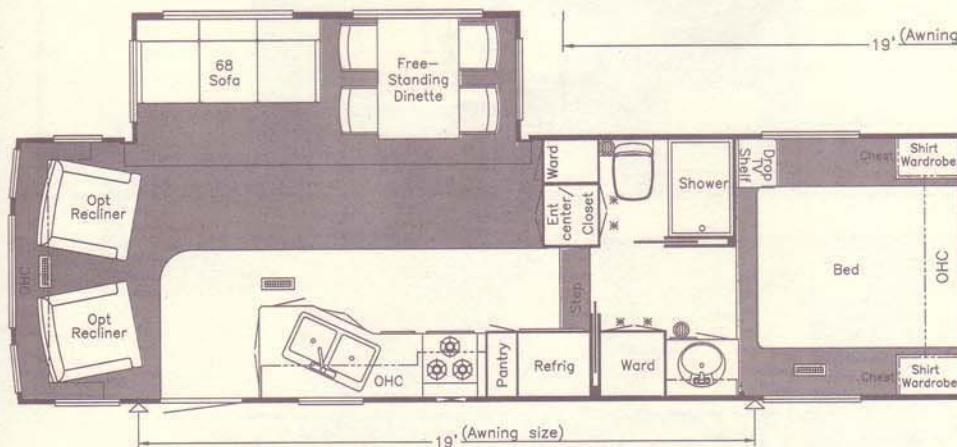
H W H E E L S P E C I F I C A T I O N S



AS 29 BKCL-FW



AS 30 RKCL-FW

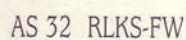
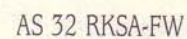


AS 30 WBRL-FW

American Star® Fifth Wheel

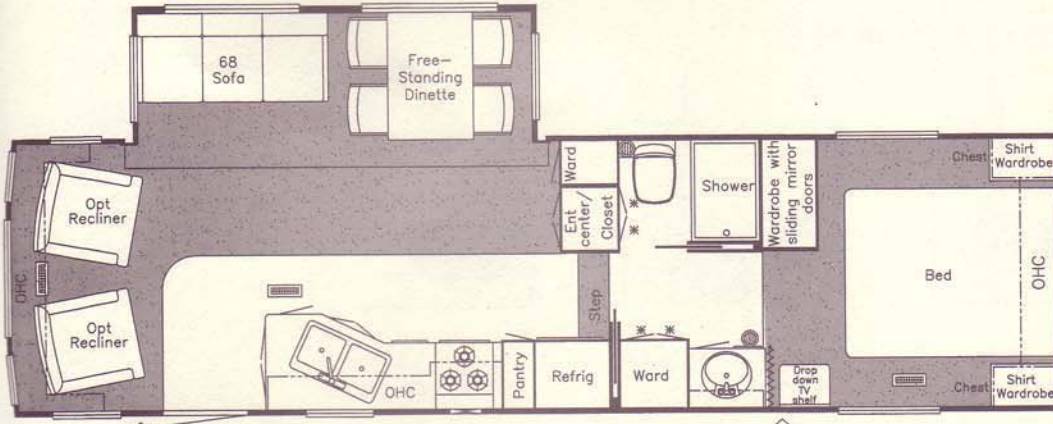
Model	Axles	Axle Cap	Tire Size	GAWR	GVWR	Length	Height	Width	Approx. Dry Weight	Approx. Hitch Weight	Fresh Water	Grey Water	Sewage Cap	Approx. Hitch Height	Heat Cap
ASFW29BKCL	2	5200	225-75-R15D	5080	11900	29' 7"	12'	100"	9545 lbs	2100 lbs	42 gal	42 gal	42 gal	46"	35000
ASFW30RKCL	2	5200	225-75-R15D	5080	11900	30' 6"	12'	100"	9392 lbs	1596 lbs	42 gal	42 gal	42 gal	46"	35000
ASFW30WBRL	2	5200	225-75-R15D	5080	11900	30' 9"	12'	100"	9134 lbs	1552 lbs	42 gal	42 gal	42 gal	46"	35000
ASFW31BKWB	2	5200	225-75-R15D	5080	11900	31' 5"	12'	100"	9450 lbs	1607 lbs	42 gal	42 gal	42 gal	46"	35000
ASFW32RKSA	2	5200	225-75-R15D	5080	11900	32' 6"	12'	100"	9672 lbs	1900 lbs	42 gal	42 gal	42 gal	46"	35000
ASFW32RLKS	2	5200	225-75-R15D	5080	11900	32' 10"	12'	100"	10300 lbs	2000 lbs	42 gal	42 gal	42 gal	46"	35000
ASFW32RLSB	2	5200	225-75-R15D	5080	11900	32' 10"	12'	100"	10161 lbs	2300 lbs	42 gal	42 gal	42 gal	46"	35000
ASFW34DSRL	2	6000	235-85-R16E	6000	14000	35' 2"	12'	100"	10500 lbs	2000 lbs	42 gal	42 gal	42 gal	46"	35000
ASFW34RKWD	2	6000	235-85-R16E	6000	14000	34' 9"	12'	100"	10289 lbs	2264 lbs	42 gal	42 gal	42 gal	46"	35000
ASFW34RLCK	2	6000	235-85-R16E	6000	14000	35' 4"	12'	100"	10307 lbs	1958 lbs	42 gal	42 gal	42 gal	46"	35000

Lengths, Heights, Widths, Dry Weights and Hitch Weights are approximate. Weight will vary based on optional equipment added to the above base weight.

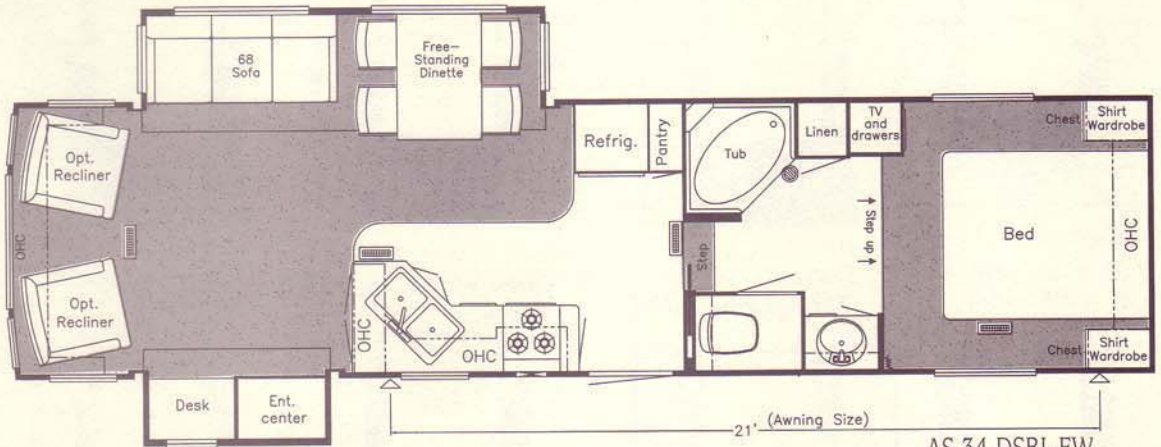


Prices, specifications, and floorplans are subject to change at Newmar's discretion without prior written notice or obligation. Some floorplans may show optional chairs or end tables. See dealer for availability.

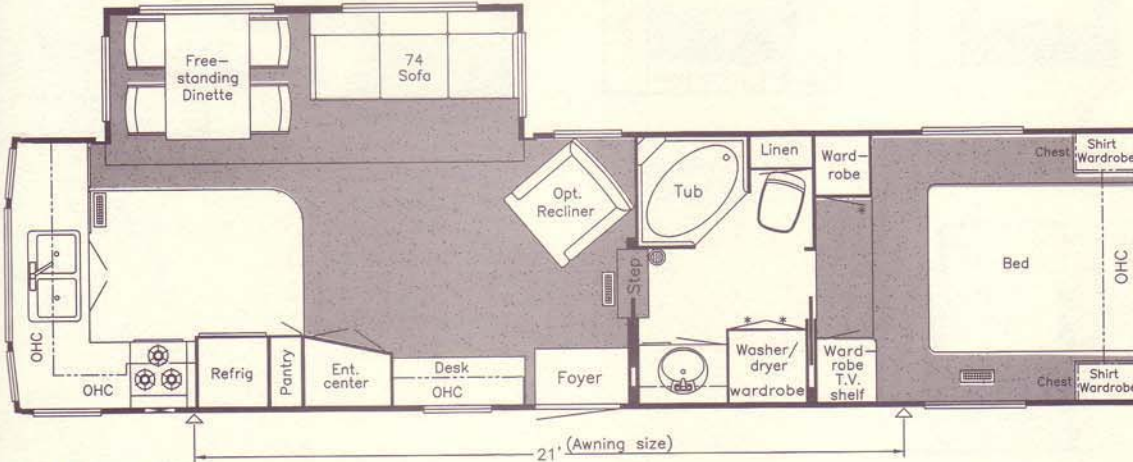
THE WHEEL SPECIFICATIONS



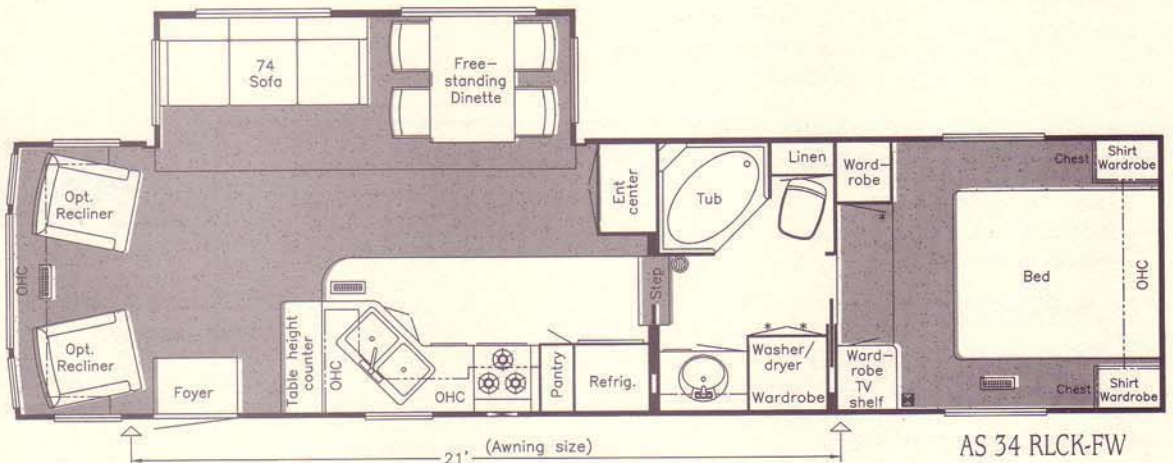
AS 32 RLSB-FW 19' (Awning size)



AS 34 DSRL-FW 21' (Awning Size)



AS 34 RKWD-FW 21' (Awning size)



AS 34 RLCK-FW 21' (Awning size)

OPTIONAL FLOORPLANS



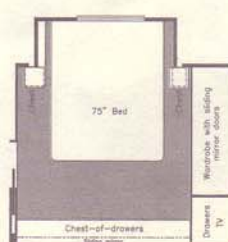
K080
75" Twin beds - All ASFW's without C/O S.O. except 29BKCL, 30RKCL, 32RLKS, 32RLSB, 34DSRL



M712
Cabover S.O. w/vanity center - ASFW 34 RKWD, 34RLCK



M440
Cabover S.O. w/75" bed - ASFW 34RKWD, 34RLCK



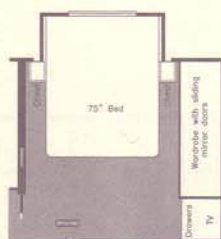
M711
Cabover S.O. w/dresser center - ASFW 34RKWD, 34RLCK



P182
Honeymoon suite - ASFW 29BKCL, 30RKCL, 32RLKSP182



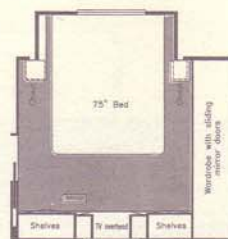
M760
Cabover S.O. w/dresser center - ASFW 34DSRL



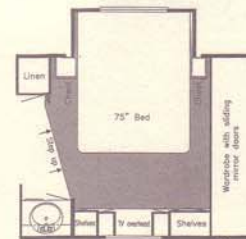
M710
Cabover S.O. w/75" bed - ASFW 29BKCL, 30RKCL, 32RLKS



M755
Cabover S.O. w/75" bed - ASFW 34DSRL



M713
Cabover S.O. w/vanity over dresser - ASFW 34RKWD, 34RLCK



M761
Cabover S.O. w/vanity over dresser - ASFW 34DSRL



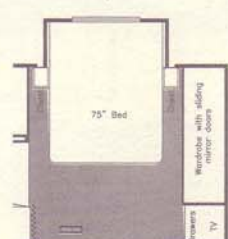
K920
Honeymoon suite - ASFW 34RKWD, 34RLCK



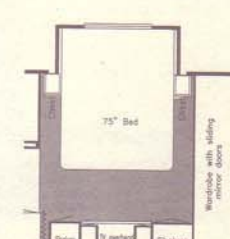
K921
Honeymoon suite - ASFW 29BKCL, 30RKCL, 32RLKS



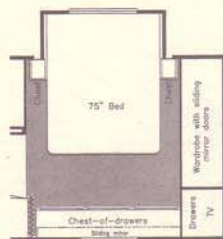
M756
Cabover S.O. w/vanity center ASFW 34DSRL



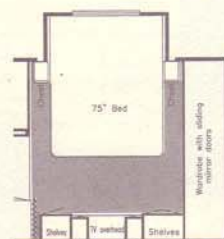
M715
Cabover S.O. w/75" bed- ASFW 32RLSB



M716
Cabover S.O. w/vanity center-ASFW 32RLSB



M717
Cabover S.O. w/dresser center-ASFW 32RLSB



M718
Cabover S.O. w/vanity over dresser center-ASFW 32RLSB

We invite you to visit our state of the art production facility in Nappanee, Indiana.

Plant tours are offered at 10:00 a.m. and 1:00 p.m., Monday through Friday.

NewmarKountryKlub

Don't forget to check out the Klub—the Newmar Kountry Klub, that is. All you need for eligibility is to be a proud owner of any of the fine Newmar recreational vehicles.

Compliments of:



An American Tradition Of Excellence

355 N DELAWARE ST • PO BOX 30
NAPPANEE IN 46550-0030
PHONE 219 773-7791 • FAX 219 773-2895
<http://www.newmarcorp.com>