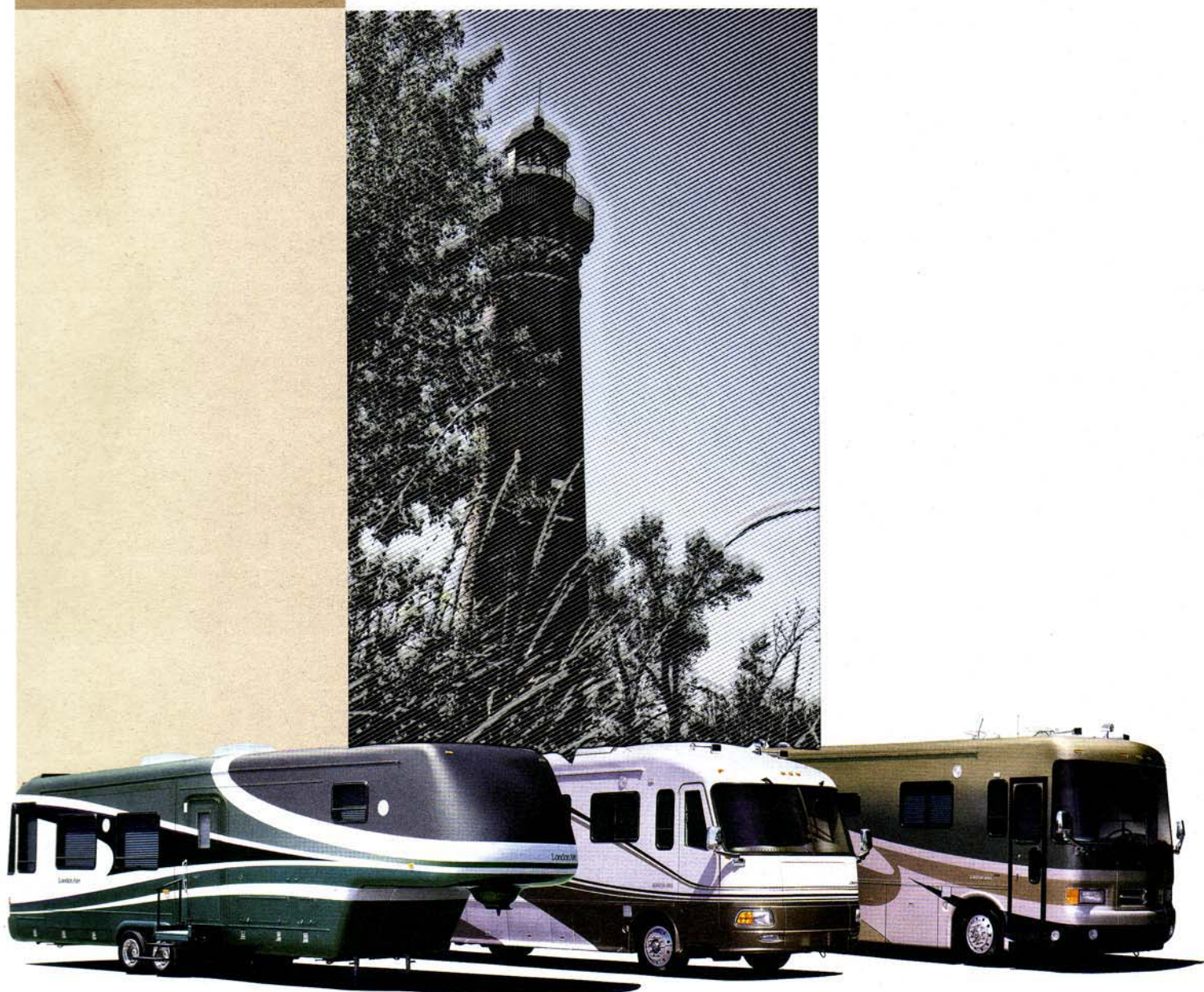


London Aire

2 0 0 0

LONDON AIRE BY NEWMAR



FIFTH WHEEL

DIESEL PUSHER

LUXURY COACH

2 0 0 0

L O N D O N

A I R E

F I

LondonAire





You are now ready for the fun step - choosing the London Aire model that perfectly suits you. The 2000 line-up boasts four interior color schemes: Steel Blue, Forest Teal, Ivory Sand and Stone Green with luxurious Ultra Suede accents. Our seamless fiberglass construction features two new contemporary painted graphics, Green Mica or Briar Smoke.

Take your knowledge to the market and reward yourself with a new London Aire.

The big flat-floor slideout provides ample space for living and dining. Note the elegant matching lambrequins.





1) The kitchen will please the most discerning chef with its long list of features, including a Dometic 1282 side-by-side refrigerator with icemaker, 30" convection microwave, 3-burner recessed cooktop, bi-fold Corian® range cover and coffee maker; to name a few.

2) The entertainment center, shown here in Frosted Maple, houses a 32" color TV, an AM/FM stereo with cassette and CD player; plus a 4-head stereo VCR.

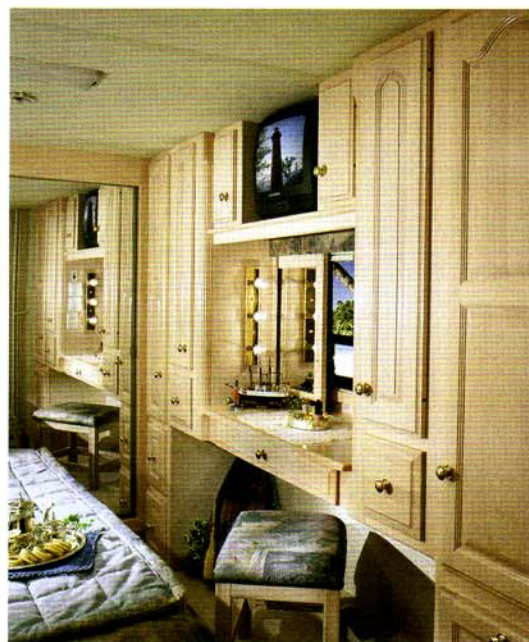




3)



4)



5)

3) Enjoy your relaxation time in the comfort of two Flexsteel® glider recliners.

4) In the master bedroom, there is a 60" x 80" queen size bed with a luxurious pillow top mattress.

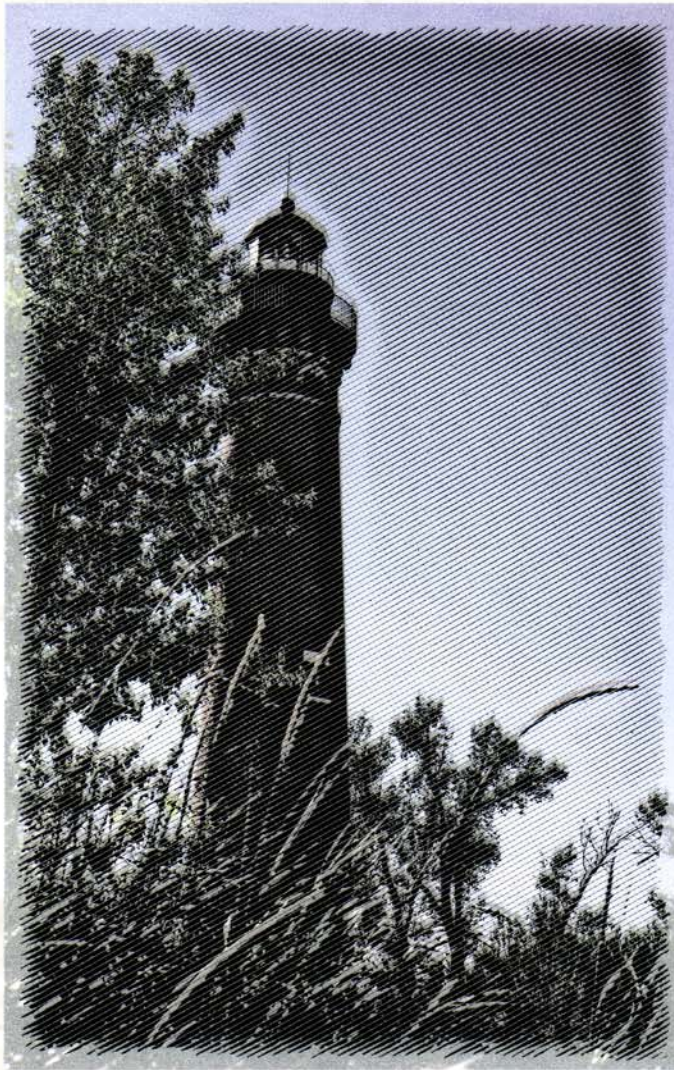
5) There are plenty of beautiful cabinets in the master bedroom, plus we've incorporated lifts on the bed top to access the storage area.

2 0 0 0

L O N D O N

A I R E

Newmar® loves an educated consumer. The more you know about recreational vehicles, the more you'll love ours. That's why you've come to London Aire®, because you know it's the very best . . . in design, interiors, furnishings, handling and, of course, in Newmar quality.



F I F T H W H E E L B Y N E W M A R

2 0 0 0

L O N D O N

A I R E

D I E

London Aire



SEL P U S H E R B Y N E W M A R



But, no matter how visually arresting from the outside, the fact remains, you'll spend a great deal more time inside your London Aire®. There you will find a spacious interior with an array of luxurious features found only in the finest homes.

The cockpit has been ergonomically designed to maximize comfort. Custom made cabinets, ceramic floors, sofas, recliners and matching window treatments are all color coordinated by our professional designers. There are few options to choose from because most amenities have been included as standard equipment on this great Newmar® motorhome.

Beauty, luxury and convenience are right at home in the London Aire Diesel Pusher kitchen. Amenities include a 30" convection microwave, Dometic® 1292 refrigerator with icemaker, coffee maker, 3-burner recessed cooktop and a bi-fold Corian® range cover, to name a few.





1) Light oak hardwoods set a sophisticated tone in the dining area. The cabinetry features knife hinges and positive catches.

2) Comfort and style blend beautifully in the London Aire® Diesel Pusher. Note the handsome window treatment.





3)



4)



5)



6)

3) The queen size bed has a quilted bedspread with matching coverlet, pillow shams and accent pillow. The windows have lined day/night pleated window shades and lambrequins.

4) The plasmavision 21" flat screen color TV disappears with the touch of a button.

5) The master bedroom features a padded vinyl ceiling with mood and direct lighting in the recessed hardwood paneled feature areas. A 20" color TV/VCR combination with radio and clock is integrated into the cabinetry.

6) Get ready for take-off, because this London Aire® has it all. The sumptuous leather/vinyl driver and passenger seats have 8-way power integrated seat belts and a relaxor/heat pad.

2 0 0 0

L O N D O N A I R E

In the spirit of Newmar's tradition of excellence, the London Aire® Diesel Pusher was born. This is a special motorhome that provides uncompromised workmanship, style and performance wrapped in luxury.

Its striking profile captures the soul as assuredly as it glides along the highway.



D I E S E L P U S H E R B Y N E W M A R

2 0 0 0

L O N D O N

A I R E

L U X

London Aire





Welcome to pure serenity. Welcome to a rewarding place distinguishable, not only for its requisite complement of features, but for how such luxuries anticipate the needs of the proud owner. Softly textured leather, rich hardwoods and leaded glass abound. Look closer, more subtle designs further reward the eye. The multiple adjustable leather/vinyl driver/passenger seats with a relaxor heat pad are contoured to support the human form. Switches and controls are positioned for easy reach. All in all, you'll want for nothing because the London Aire® Luxury bus gives you everything.

The big flat-floor slideout provides ample space for living and dining. Note the elegant matching lambrequins.



LUXURY COACH BY NEW MAR



- 1) Everything you could dream of is in the kitchen including a 30" convection microwave, a side-by-side residential refrigerator with ice maker, a 3-burner electric cook top with bi-fold Corian® range cover, and a coffee maker.
- 2) Our decorative bedding ensemble includes a quilted bedspread with matching coverlet, pillow shams and accent pillow.
- 3) Our side-by-side residential refrigerator provides a generous amount of storage space.

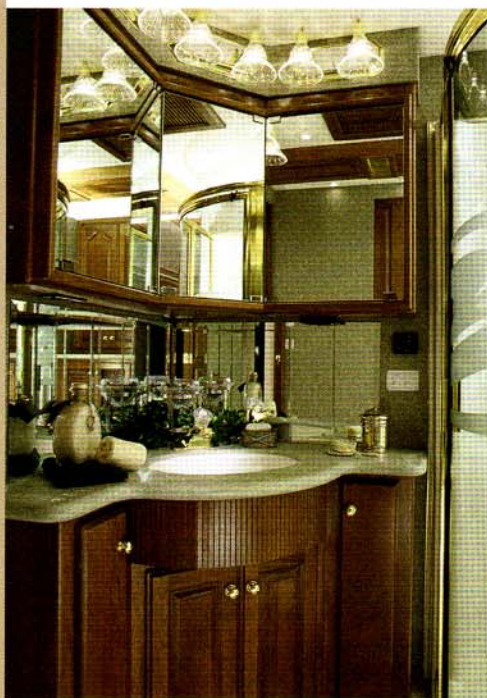


- 4) Sit under the stars and enjoy your viewing entertainment with our optional outside entertainment center.
- 5) In the master suite, you will find an abundance of beautiful hardwood cabinetry featuring dovetail sides and metal guides. The wardrobe includes cedar paneling on the side wall of one wardrobe.





6)



7)



8)

6) It's like a cozy den "on the road" with a leather/vinyl L-lounge with ottoman and incliner that says "stay awhile."

7) The stately bath features a Corian® counter-top with decorative inlay and integrated Corian lavatory.

8) Step into the "cockpit" and you will discover an air ride driver's seat, a 27" color TV in the overhead dash, an AM/FM in-dash stereo with a combination rear view color monitor system, a CB radio, a CD player with remote 8-disc changer, plus a Carin/Phillips navigation system.

2 0 0 0

L O N D O N

A I R E

You keep achieving it. Yet, you keep seeking it. OK, so here it is: MORE -

the all new London Aire® Luxury Bus.

Step in and get ready to experience luxury at its Newmar® best. Finely conceived and designed for the way you live - the London Aire Luxury Bus combines superior technology and uncompromising detail with distinctive confidence and grace.



L U X U R Y C O A C H B Y N E W M A R

FIFTH WHEEL STANDARD FEATURES

Air Conditioning & Heating

- 2-30# LP Gas Bottles w/Automatic Regulator - On Slides
- 2 - 13.5M Penguin Heat Pump Central Air Conditioners
- LP Leak Detector

Appliances & Accessories

- 10 Gal. Gas/Electric Water Heater w/Direct Spark Ignition
- 30" Convection Microwave
- 13" Color TV (in bedroom)
- 32" Color TV
- 3-Burner Recessed Cooktop
- AM/FM Stereo w/Cassette & CD Player
- Bi-fold Corian Range Cover
- Cable TV Connection w/RG6 Coaxial
- Ceiling Fan In Living Room Area
- Cellular Telephone Antenna
- Coffee Maker
- Dometic 1282 Side-By-Side Refrigerator w/Icemaker (12 cu ft)
- Framed Hardwood Raised Panel Refrigerator Front
- Portable Vacuum
- Safe
- Satellite Prep - Phone/TV Jack & Recept
- Telephone Connection w/1 Phone Jack
- TV Antenna w/Power Booster & 2 Jacks
- VCR 4-Head Stereo
- Washer/Dryer Prep

Cabinets & Furniture

- Chair End Table w/Bevelled Glass Top & Fluted Legs
- Cherry Hardwood Cabinets w/Raised Panel Cathedral Doors
- Corian Countertop In Kitchen w/Integrated Corian Sink

Cabinets & Furniture (Cont.)

- Corian Countertop w/Decorative Inlay & Integrated Corian Lavatory In Bath
- Corian Countertop w/Decorative Inlay On Bedroom Nightstands
- Flexsteel glider Recliner w/Leather/Vinyl (two in 39 KSWB)
- Queen Bed (60" X 80") w/Luxurious Pillow Top Mattress
- Sofa Coffee Table w/Bevelled Glass Top & Fluted Legs

Electrical Features

- 75 AMP Converter w/Charger
- 2 - 6 Volt Batteries
- Battery Disconnect Switch
- Quick Charge Battery System
- 400 Watt Inverter (for entertainment center)
- 50 AMP Electrical Service w/Detachable Cord
- Exterior Security Lights (two installed on each side)
- Interior Courtesy Lights
- Lights In Exterior Storage Areas, Controlled By Interior Master Switch
- Lights In Wardrobes w/Automatic Switches

Exterior Features

- Fiberglass Pin Box Cover
- Gel-Coated Fiberglass End Caps
- Gel-Coated Fiberglass Roof & Top Wrap
- One Piece Molded Fiberglass Front Goose Neck Area
- Power Front Jacks, Rated At 8,000 Lbs. w/Independent Operation
- Seamless Gel-Coated Fiberglass Exterior Sides
- Snaps For Fifth Wheel Jacks
- Spare Tire
- Stabilizer Jacks (2 pair)
- Storage Drawer In Front Compartment Area

Interior Features

- Carpeting 55 oz. 100% Nylon Cut Pile Velvet Saxony w/Scotchguard Stain Release
- Ceramic Floor Tile In Bath Area
- Ceramic Floor Tile In Kitchen & Foyer Area
- Decorative Sculptured Inlay Area Rug
- Decorative Sculptured Inlay Design In Living Area Carpet
- Designer Wall Paper On Interior Walls
- Padded Vinyl Ceiling
- Quilted Bedspread w/Matching Coverlet, Pillow Shams & Accent Pillow

Plumbing/Bath Features

- China Stool w/Spray Attachment
- Fiberglass Tub/Shower w/Enclosure
- Gate Valve Drain On Fresh Water Tank
- Monitor Panel
- Sewage Holding Tank Rinse
- Water Filter w/Drink Dispenser At Kitchen Sink
- Water Heater Bypass System

Construction Features

- 16" I-Beam Frame w/Molded Fiberglass Wrap Storage Doors
- Aluminum Sidewalls & Roof Construction, 16" On Center

Windows, Awnings & Vents

- Fantastic Vent w/Rain Sensor In Kitchen
- Power Vent In Bath Area w/Wall Switch
- A&E 9000 Side Awning
- Lighted Acrylic Assist Handle At Entrance Door
- Power Slideout Landing w/Power Step
- Skylight In Bathroom w/Soft Shade (located above tub/shower)
- Stainless Steel Wheel Simulators
- Tinted Safety Glass Windows

Towable Chassis Features

- Tandem Axle Dual Wheels w/Mor/ryde Independent Suspension

FIFTH WHEEL OPTIONAL FEATURES

Appliances & Accessories

- Winegard Automatic Satellite Dish (without receiver)

Cabinets & Furniture

- Frosted Maple Hardwood Cabinets
- Oak Hardwood Cabinets
- Flexsteel Leather/Vinyl Sofa ilo Standard

Electrical Features

- 5.5 Onan Generator w/Automatic Changeover & Battery

Plumbing/Bath Features

- Water Filter (for entire unit)

Windows, Awnings & Vents

- Double Pane Tinted Safety Glass Windows

London Aire Fifth Wheel Sizes & Capacities

Model	Axle	Axle	Tire	GAWR	GVWR	Approx.	Approx.	Approx.	Approx.	Approx.	Fresh	Grey	Sewage	Approx.	Heat
		Cap	Size			Length	Height	Width	Dry	Hitch	Water	Water	Cap	Hitch	Cap
									Weight	Weight				Height	
LAFW39KSWB	2	10000	215-85-R16D	8600	20000	39' 8"	12' 4"	101"	17610	2642	75 gal	92 gal	50 gal	47"	55000

London Aire Diesel Pusher Spartan Chassis

Model	Engine	Axle	Fuel	Wheel	Front	Rear	GVWR	GCWR	Approx.	APPR.
	H.P.	Ratio	Cap.	Base	GAWR	GAWR			UVW	
LADP4083	350	4.78	150	276	13200	19000	32200	42000	29345	2855
LADP4085	350	4.78	150	276	13200	19000	32200	42000	28995	3205

Lengths, Heights, Widths and Dry Weights are approximate. Weight will vary based on optional equipment added to the above base weight.

DIESEL PUSHER STANDARD FEATURES

Motorized Chassis Features

- Spartan Mountain Master Chassis (350 HP)
- Raised Rail w/Independent Front Suspension
- Cruise Control
- Polished Aluminum Wheels
- Tilt & Telescope Steering Wheel

Air Conditioning & Heating

- 2 - 13.5M Penguin Heat Pump Central Air Conditioners
- Dash Air Conditioning w/Independent Settings For Driver & Passenger
- LP Leak Detector

Appliances & Accessories

- Instant Recovery Water Heater w/Winterize Kit
- 30" Convection Microwave
- 20" Color TV/VCR Combination w/Radio & Clock In Bedroom
- Plasmavision 21" Flat Screen Color TV (under dash overhead w/power lift)
- 100# Norcold Freezer AC/DC (on slides)
- 3-Burner Recessed Cooktop
- Air Horns
- AM/FM Stereo In Dash w/Combination Rear View Color Monitor System
- Bi-fold Corian Range Cover
- Cable TV Connection w/RG6 Coaxial
- CB Radio
- Cellular Telephone Antenna
- Coffee Maker
- Compact Washer/Dryer
- Dometic 1292 Refrigerator w/Icemaker (12 cu ft)
- Framed Hardwood Raised Panel Refrigerator Front
- Portable Vacuum
- Safe
- Security System
- Surround Sound Entertainment System
- TV Antenna w/Power Booster & 2 Jacks (low profile)
- VCR 4-Head Stereo
- Winegard Automatic Satellite Dish (without receiver)

Cabinets & Furniture

- Flexsteel Easy Bed Sofa w/Storage Drawer
- Flexsteel L-Lounge Leather/Vinyl Sofa w/Incliner
- Cherry Hardwood Cabinets w/Raised Panel Cathedral Doors (unitized construction)
- Corian Countertop w/Decorative Inlay & Integrated Corian Lavatory In Bath
- Corian Countertop In Kitchen w/Integrated Corian Sink
- Corian Countertop w/Decorative Inlay On Bedroom Nightstands
- Dinette Table Corian Insert Top w/Two Fixed & Two Folding Upholstered Chairs
- Flexsteel Front Seats - Leather/Vinyl w/8-Way Power Lumbar Support & Relaxor Heat Pads & Power

Electrical Features

- 4 - 6 Volt Batteries On Pull-out Tray
- Battery Disconnect (for house battery)
- 5 Watt Solar Panel To Charge Chassis Battery
- 50 AMP Electrical Service w/Power Rewind For Cord
- Daytime Headlight System
- Driving Lights
- Energy Management System
- Exterior Security Lights (two installed on each side)
- Heart Freedom 20 Inverter/Converter
- Interior Courtesy Lights
- Lights In Wardrobes w/Automatic Switches
- Recessed Docking Lights
- Roof Mounted Spot Light

Exterior Features

- Convex Exterior Chrome Mirrors w/Remote Control & Defrost
- Gel-Coated Fiberglass End Caps w/Integrated Front Entrance Doors
- Hitch For Towing Car (w/2 extra 14 gauge wires for customer use) (class-2, 5000# rating)
- Hydraulic Leveling Jacks w/Automatic Control
- Painted Exterior Graphics w/Clear Coat Finish
- Rear Protective Tow Guard
- Seamless Gel-Coated Fiberglass Exterior Sides
- Seamless Molded Gel-Coated Fiberglass Roof & Top Wrap

Interior Features

- Carpeting 55 oz. 100% Nylon Cut Pile Velvet Saxony w/Scotchguard Stain Release
- Ceramic Floor Tile In Kitchen & Bath Area
- Decorative Sculptured Inlay Area Rug
- Decorative Sculptured Inlay Design In Living Area Carpet
- Designer Wall Paper On Interior Walls
- Mini Blind Window Shades In Kitchen Area
- Padded Vinyl Ceiling w/Mood & Direct Lighting In Recessed Hardwood Paneled Feature Areas
- Quilted Bedspread w/Matching Coverlet, Pillow Shams & Accent Pillow
- Windshield Area Privacy Shade Power Activated

Plumbing/Bath Features

- Automatic Rewind Water Hose Reel
- China Stool w/Spray Attachment
- Fiberglass Tub/Shower w/Enclosure
- Monitor Panel
- Sewage Holding Tank Rinse
- Water Filter w/Drink Dispenser At Kitchen Sink
- Water Heater Bypass System

Construction Features

- Aluminum Sidewalls & Roof Construction, 16" On Center

Windows, Awnings & Vents

- Automatic Double Entrance Door Step
- Fantastic Vent - Vented Through Central Air Duct
- Fantastic Vent w/Rain Sensor In Bath
- A&E 9000 Side Awning
- A&E 9000 Window Awnings (on bedroom & slideout windows)
- A&E Slideout Cover For Living Area Slideout
- Driver's Side Door w/Power Window & Keyless Lock
- Front Entry Door w/Air Powered Flush Stepwell Cover, Power Window & Keyless Lock
- Skylight In Bathroom w/Soft Shade (located above tub/shower)

DIESEL PUSHER OPTIONAL FEATURES

Appliances & Accessories

- Navigation System - Carin/Philips (w/7 disc set)
- External Entertainment Center

Cabinets & Furniture

- Frosted Maple Hardwood Cabinets
- Oak Hardwood Cabinets
- Flexsteel Leather/Vinyl Recliner & Lamp Stand ilo L-Lounge
- Flexsteel Leather/Vinyl Sofa ilo Standard Sofa
- Combination Desk/Dinette Table ilo Standard

Exterior Features

- Front End Protective Shield

Interior Features

- Hardwood Lambrequin Window Treatment In Living Area

Windows, Awnings & Vents

- Double Pane Windows (not available on driver/passenger area)

London Aire Diesel Pusher Sizes & Capacities

Model	Approx. Overall Length		Approx. Overall Width	Approx. Interior Width	Interior Height	Grey Tank (Gal)	Sewage Tank (Gal)	Water Tank (Gal)	L/P Tank (Gal)	Furnace (btu)	Water Heater
LADP4083	40' 8"	101"	12' 2"	93"	78"	65 gal	45 gal	105 gal	42 lbs	40000 btu	10 gal
LADP4085	40' 8"	101"	12' 2"	93"	78"	65 gal	45 gal	105 gal	42 lbs	40000 btu	10 gal

S P E C I F I C A T I O N S

DIESEL BUS STANDARD FEATURES

Motorized Chassis Features

- Spartan K2 Chassis (450 HP) w/Independent Front Suspension & Tag Axle
- Cruise Control
- Polished Aluminum Wheels
- Remote Engine Oil Fill & Electronic Fuel Filter
- Tilt & Telescope Steering Wheel

Air Conditioning & Heating

- 27M Duo-Therm Basement Model Central Air Conditioner
- Aqua Hot Hydronic Zone Heating System
- Dash Air Conditioning w/Independent Settings For Driver & Passenger
- LP Leak Detector

Appliances & Accessories

- 30" Convection Microwave
- 20" Color TV/VCR Combination w/Radio & Clock In Bedroom
- 27" Color TV (in dash overhead)
- Side-By-Side Residential Refrigerator w/Icemaker
- 100# Norcold Freezer AC/DC (on slides)
- 3-Burner Electric Cooktop
- Air Horns
- AM/FM Stereo In Dash w/Combination Rear View Color Monitor System
- Bi-fold Corian Range Cover
- Cable TV Connection w/RG6 Coaxial
- CB Radio
- Cellular Telephone Antenna
- Coffee Maker
- Compact Washer/Dryer
- Daytron Automatic Satellite Dish w/DSS Receiver
- Navigation System - Carin/Philips (w/7 disc set)
- Portable Vacuum Safe
- Security System
- Surround Sound Entertainment System
- TV Antenna w/Power Booster & 2 Jacks (low profile)
- VCR - 4 Head HiFi

Cabinets & Furniture

- Flexsteel Easy Bed Leather/Vinyl Sofa w/Storage Drawer

Cabinets & Furniture (Cont.)

- Flexsteel L-Lounge Leather/Vinyl Sofa w/Incliner & Ottoman
- Cherry Hardwood Cabinets w/Raised Panel Cathedral Doors (unitized construction)
- Corian Countertop w/Decorative Inlay & Integrated Corian Lavatory In Bath
- Corian Countertop w/Decorative Inlay & Integrated Corian Sink In Kitchen
- Dinette Table w/Corian Inlay Top
- Flexsteel Front Seats - Leather/Vinyl w/Pneumatic Power Lumbar Support & Air Ride On Driver's Side
- Flexsteel Front Seats - Swivel/Recline w/Over Sized Passenger's Seat & Power Footrest
- Relaxor Heat Pads On Driver/Passenger Front Seats

Electrical Features

- 6 - 6 Volt Batteries
- Battery Disconnect (for house battery)
- 12.5 Onan Diesel Quiet Series Generator w/Automatic Changeover & Power Activated Slides
- 5 Watt Solar Panel To Charge Chassis Battery
- 50 AMP Electrical Service w/Remote Controlled Power Rewind For Cord
- Automatic Start System For Generator
- Cornering Assistance Lights
- Daytime Headlight System
- Driving Lights
- Energy Management System
- Exterior Security Lights (two installed on each side)
- Heart Freedom 20 Inverter/Converter
- Interior Courtesy Lights
- Lights In Wardrobes w/Automatic Switches
- Recessed Docking Lights
- Roof Mounted Spot Light

Exterior Features

- Convex Exterior Chrome Mirrors Flat & Convex w/Remote Control & Defrost - Front Mounted
- Hitch For Towing Car (w/2 extra 14 gauge wire for customer use) (class-2, 5000# rating)
- Hydraulic Leveling Jacks w/Automatic Control & Air Dump
- Painted Exterior Graphics w/Clear Coat Finish
- Rear Protective Tow Guard
- Seamless Gel-Coated Fiberglass Exterior Sides

Interior Features

- Carpeting 55 oz. 100% Nylon Cut Pile Velvet Saxony w/Scotchguard Stain Release
- Ceramic Floor Tile In Kitchen & Bath Area
- Decorative Sculptured Inlay Area Rug
- Decorative Sculptured Inlay Design In Living Area Carpet
- Decorative Afghan
- Designer Wall Paper On Interior Walls
- Mini Blind Window Shades In Kitchen Area
- Quilted Bedspread w/Matching Coverlet, Sham & Accent Pillow
- Seamless Padded Vinyl Ceiling
- Windshield Area Privacy Shade Power Activated

Plumbing/Bath Features

- Corian Bath Accessories (1 each-towel bar, tissue holder, towel ring & robe hook)
- Automatic Rewind Water Hose Reel
- China Stool w/Spray Attachment
- Exterior Convenience Wash Station (hot/cold water, soap & towel dispenser)
- Monitor Panels (interior & exterior)
- Sewage Holding Tank Rinse
- Water Filter w/Drink Dispenser At Kitchen Sink
- Water Heater Bypass System

Construction Features

- Aluminum Sidewalls & Roof Construction, 16" On Center

Windows, Awnings & Vents

- Automatic Double Entrance Door Step
- Fantastic Vent w/Rain Sensor In Bath
- A&E 9000 Side Awning
- A&E 9000 Window Awnings (on bedroom & slideout windows)
- A&E Front Entrance Door Awning
- A&E Slideout Cover For Living Area Slideout
- Double Pane Windows (not available on driver/passenger area)
- Front Entry Door w/Air Powered Flush Stepwell Cover & Keyless Lock

DIESEL BUS OPTIONAL FEATURES

Appliances & Accessories

- External Entertainment Center

Cabinets & Furniture

- Frosted Maple Hardwood Cabinets
- Oak Hardwood Cabinets
- Flexsteel Leather/Vinyl Recliner & Lamp Stand ilo L-Sofa
- Flexsteel Cloth Dual Incliner Sofa w/Snack Trays ilo Standard

Cabinets & Furniture (Cont.)

- Flexsteel Leather/Vinyl Dual Incliner Sofa w/Snack Trays ilo Standard
- Combination Desk/Dinette Table ilo Standard

Exterior Features

- Front End Protective Shield

Interior Features

- Hardwood Lamberquins Window Treatment In Living Area

London Aire Bus Sizes & Capacities

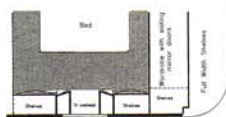
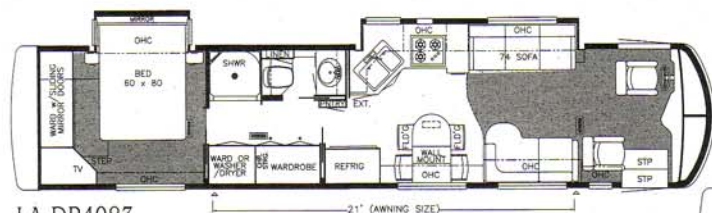
Model	Approx. Overall Length	Approx. Overall Width	Approx. Interior Width	Interior Height	Grey Tank (Gal)	Sewage Tank (Gal)	Water Tank (Gal)	L/P Tank (Gal)	Furnace (btu)	Water Heater	
LADB4554	44' 6"	101"	12' 6"	95.5"	82"	65 gal	45 gal	110 gal	42 lbs	50000 btu	10 gal
LADB4557	44' 6"	101"	12' 6"	95.5"	82"	65 gal	45 gal	110 gal	42 lbs	50000 btu	10 gal

Lengths, Heights, Widths, Dry Weights and Hitch Weights are approximate. Weight will vary based on optional equipment added to the above base weight.



LA FW 39KSWB

FIFTH WHEEL OPTIONAL FLOORPLANS

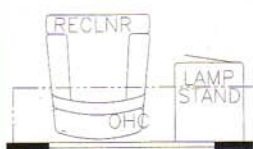
M478
Vanity/dresser
center ilo std. -
LA FW 39KSWBK890
Dresser center ilo
vanity center -
LA FW 39KSWB

LA DP4083

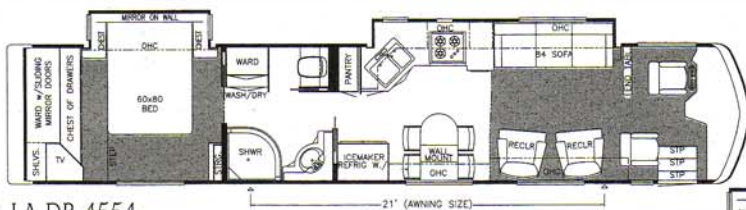


LA DP4085

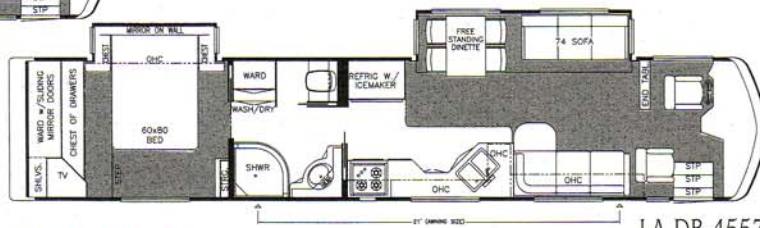
DIESEL PUSHER OPTIONAL FLOORPLANS

K912
Recliner & lamp
stand ilo stan-
dard - All LP'sK122
Dinette computer
station combo ilo
dinette table - All
LP's, 4085K951
Honeymoon
suite bedroom
LP 4085

Prices, specifications, and floorplans are subject to change at Newmar's discretion without prior written notice or obligation. Some floorplans may show optional chairs or end tables. See dealer for availability.

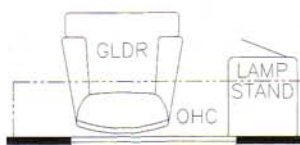


LA DB 4554



LA DB 4557

DIESEL BUS OPTIONAL FLOORPLANS

K810
Recliner & lamp
stand ilo std
All LB'sK760
L-lounge sofa 81"
leather ilo recliners
LB 4554

London Aire Diesel Bus Spartan Chassis

Model	Engine H.P.	Axle Ratio	Fuel Cap.	Wheel Base	Front GAWR	Rear GAWR	Tag GAWR	GVWR	GCWR	Approx. UVW	APPR.
LADB4554	450	4.11	150	286+TA	13700	20000	10000	43700	53700	37250	6450
LADB4557	450	4.11	150	286+TA	13700	20000	10000	43700	53700	37050	6650

Lengths, Heights, Widths and Dry Weights are approximate. Weight will vary based on optional equipment added to the above base weight.