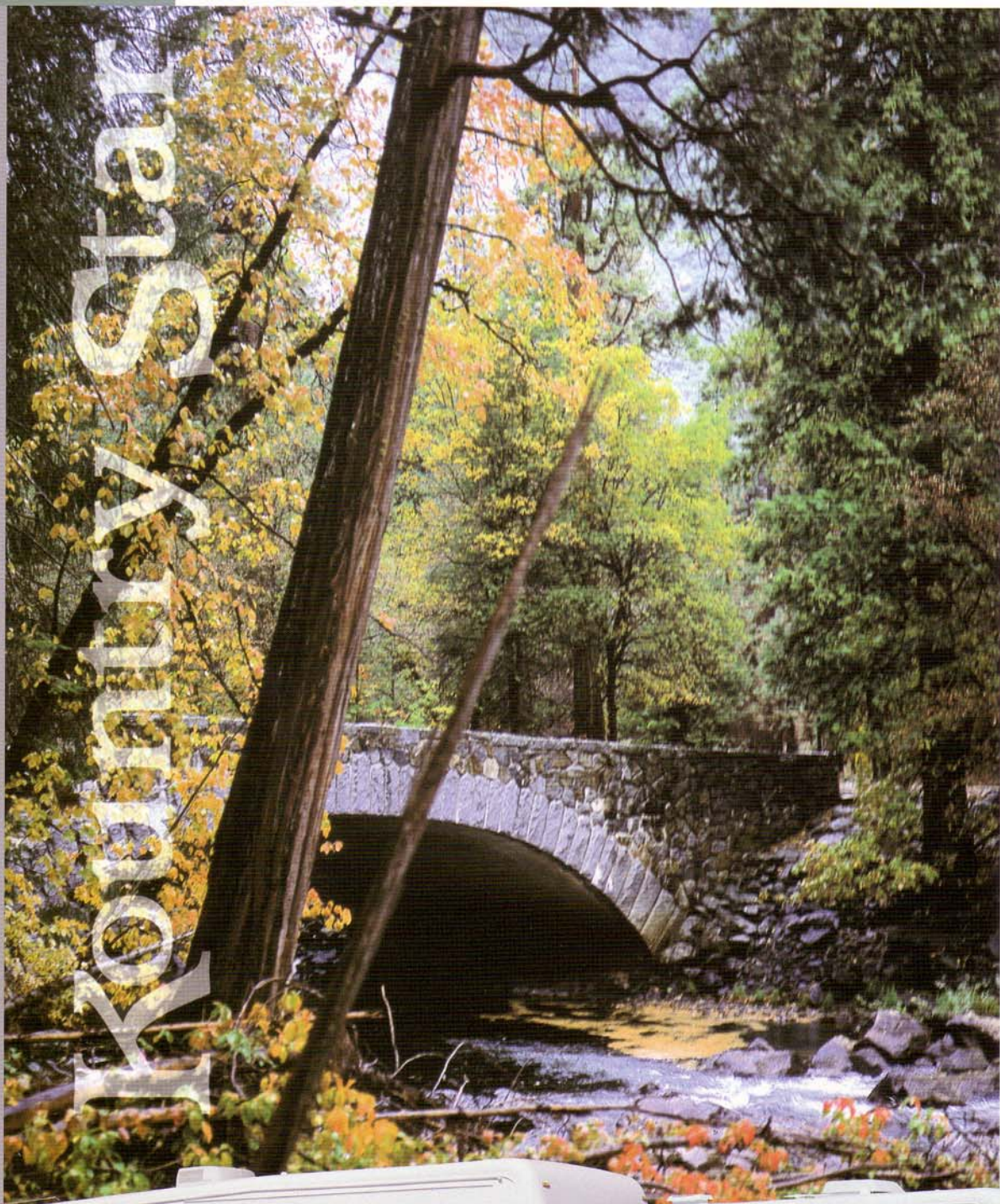


2000 KOUNTRY STAR BY NEWMAR



FIFTH WHEEL • CLASS A



For more than three decades, Newmar has pioneered the development of recreational vehicle design, construction and innovation - making the Newmar® name synonymous with the best in RV living.

Whether a first-timer or an old-timer, you will feel pride in owning a Kountry Star®. New contemporary exterior graphics in either Teal or Plum make a bold exterior statement, while on the inside you can choose from three beautiful color schemes in Diamond Blue, Primrose Garden or Cypress. Whatever Kountry Star model you select - isn't it nice to know that you've made your selection from the very best!!



1)

5)

F T H W H E E L B Y N E W M A R

- 1) The slideout room in our Kountry Star® features a beautiful sofa, elegant dinette and window treatment.
- 2) A well-planned kitchen includes our beautiful Light Oak cabinets (shown) as standard equipment, with Snow Maple available as a tasteful option, a 22" 1.3 cf microwave, hardwood raised panel refrigerator and our deluxe grade, laminate floor.



3)



2)



4)

- 3) The master bedroom in our Kountry Star features plenty of built-in storage space.
- 4) Beautiful cabinetry is home to a Fisher entertainment center that includes a tuner, CD and tape player.



6)

- 5) In the Kountry Star's beautiful interior; the standard flat-floor slideout makes the living, dining and entertainment areas as open and comfortable as your home. Note the built-in desk. Also note the optional fabric and hardwood fluted fascia board and lambrequin window treatment.

- 6) Our standard light oak cabinets with raised panel doors set a great stage in the kitchen. The wood laminate floor is beautiful and easy to maintain.



7)



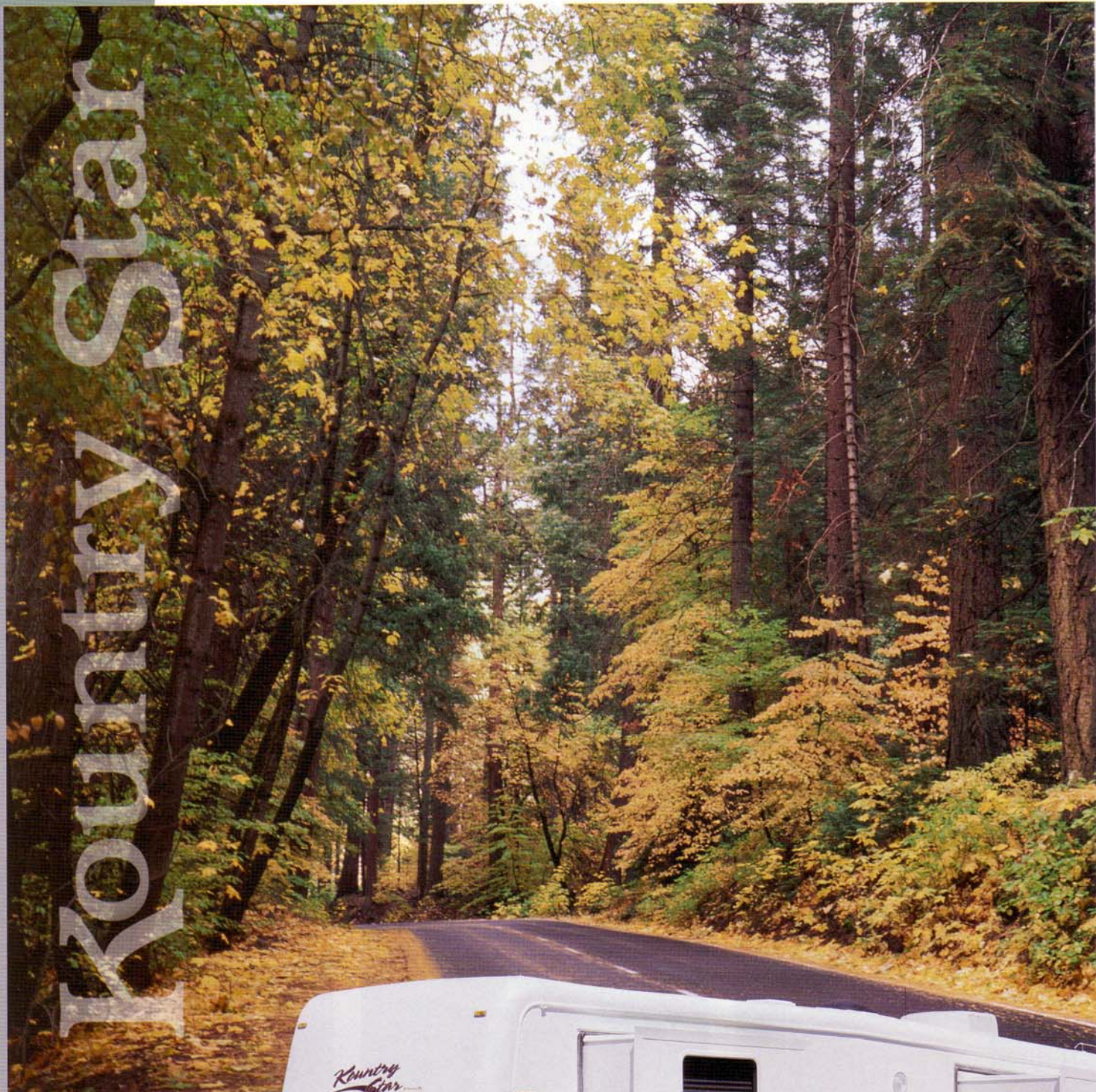
8)

- 7) The spacious planning of the master bedroom and bath have made the Kountry Star® Fifth Wheel a very popular model.

- 8-9) An abundance of built-in storage is found in the Kountry Star's master bedroom. Including an optional dresser (shown in 8).



9)



Country Star



C O N S T R U C T I O N

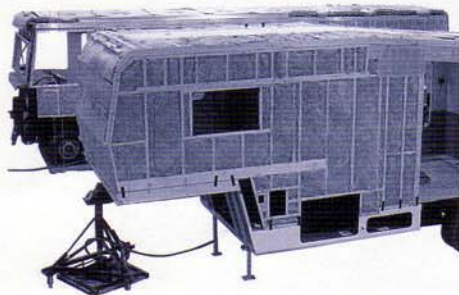
We love an educated consumer. The more you know about recreational vehicles, the more you'll appreciate ours. Some manufacturers might call our recreational vehicles "over built" - but that's a compliment to us. We make no apologies for building the finest recreational vehicles in the world.

Although Newmar® recreational vehicles are created and assembled in one of the largest and most advanced facilities, it's talented people that build our products. We are located in the heart of Amish Country in Nappanee, Indiana. Our



employees blend old world craftsmanship with new technological advances that set our products apart. And because our products are built better, every Kountry Star carries our 3-year warranty.

It's a simple process for you to verify the quality of our products. The first step is to visit your Kountry Star Dealer and examine one of our fine products for yourself. Then ask a Newmar owner and learn first hand from someone who has experienced Newmar quality.

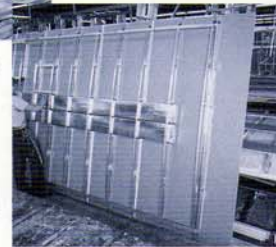


Kountry Star® Fifth Wheel units are built on a strong 12" I-beam frame. Our

aluminum sidewalls and roof are



built 16" on-center and 5/8" foam insulation is laminated into



the sidewalls and ceiling along with an additional R12 in the sidewalls, R14 in the floor and R13 in the roof.

Now you're ready for the final and most enjoyable step - choosing a Kountry Star model that suits you. We challenge you to compare the quality of our Kountry Star models to any other, because we're sure you'll agree - there is none better than the best - Kountry Star from Newmar.





1)

For as long as we've been building motorhomes, we've also been using them. Not for our own gratification, but as a family test of enjoyment. The way we see it, an investment in a motorhome is a wise one as long as it endures and provides lasting fun. Only those who build motorhomes the way we do dare to offer a 3 year warranty that is the most comprehensive in the business. That is a statement of pure confidence in the products we build. A statement from those who own a Kountry Star® can make every time they use their motorhome. A statement we've been making since 1968. A statement almost as startling as the new Kountry Star Class A itself.

For 2000, you'll find a wonderful line of Kountry Star Class A models. They are available in three excellent interior color schemes: Pale Amber, Chalk Blue and Plum Berry. The two sharp exteriors in either Taupe Pearl or Royal Blue truly stand out on our smooth gel-coated exterior sidewalls. See why the Kountry Star Class A is a proven favorite at your Newmar® dealer today.



4)

S A M O T O R H O M E B Y N E W M A R

1) Handsome window treatments frame the dining area.

2) Light Oak hardwood cabinetry is handsomely displayed in this roomy kitchen. Snow Maple is offered as an optional woodgrain.



2)



3)

3) You will find a walk-around queen size bed and ample cabinetry in the master bedroom.



4) A simple push of a button transforms the flat-floor slideout into a big living and dining room area.

5) The spacious cab area has built-in cabinetry and TV. Leather/vinyl, 6-way power driver and passenger seats are popular options.

6) You will feel right at home in our Flexsteel® recliner with adjustable headrest.



6)

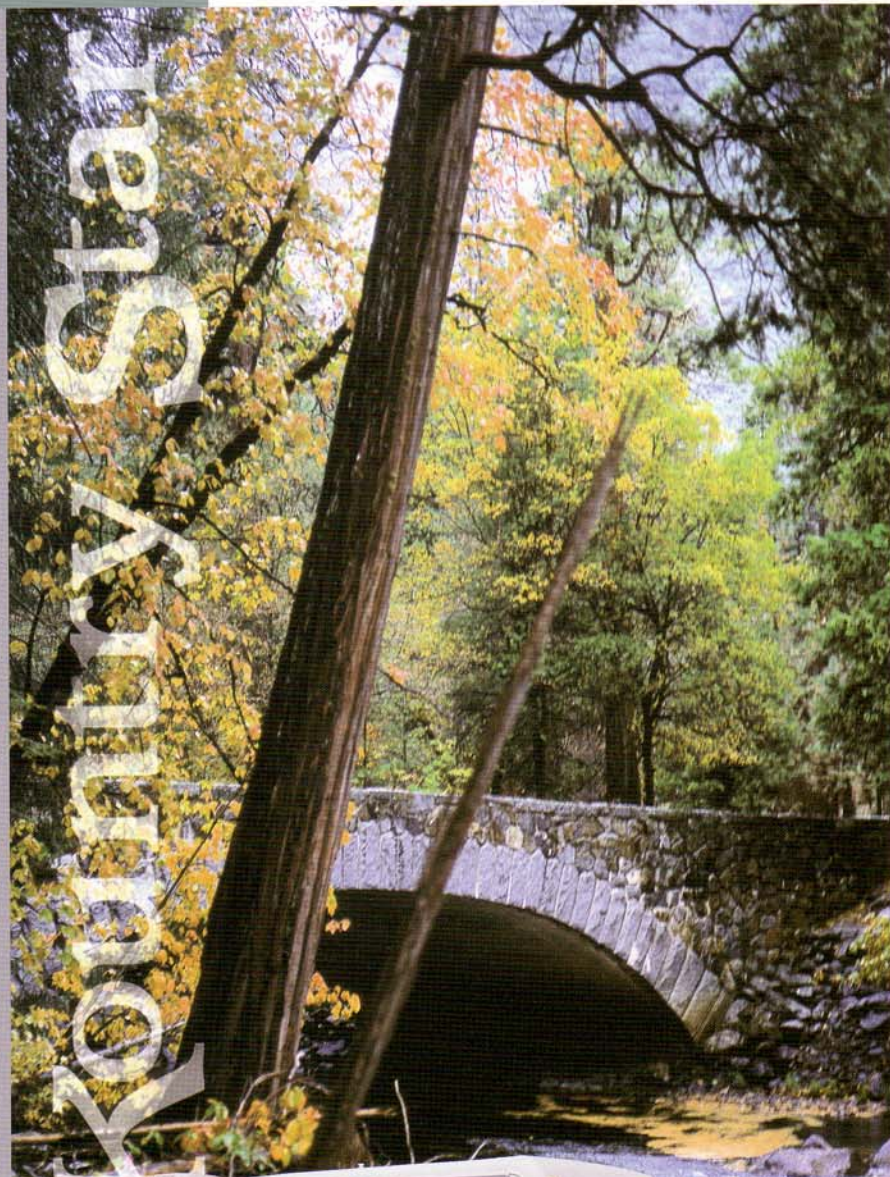


7)

5)

7) The bath includes a full size shower, sink and vanity, smartly planned next to the master suite.

2000 KOUNTRY STAR BY NEWMAR



For more than three decades, Newmar® has been building America's most popular recreational vehicles. Right from the start - customers like you recognized that a Newmar recreational vehicle was something special. In a world of cookie-cutter RVs, a Newmar product has always stood out for its innovative features, outstanding performance and unparalleled quality. And, while we're proud of our tradition of excellence, we won't rest on our laurels. We're constantly refining our recreational vehicles to make them even better. We believe the models featured in this catalog are the finest we've ever built. And, we back them with a bumper-to-bumper, three year warranty.

Thanks for taking the time to look over our products. We sincerely hope you will become one of our many satisfied customers who have learned that Newmar truly is An American Tradition of Excellence.

Mahlon Miller
Chairman of the Board

We invite you to visit our state of the art production facility in Nappanee, Indiana.

Plant tours are offered at
10:00 a.m. and 1:00 p.m.,
Monday through Friday.

Newmar Kountry Klub

Don't forget to check out the Klub—the Newmar Kountry Klub, that is. All you need for eligibility is to be a proud owner of any of the fine Newmar recreational vehicles.



Compliments of:



An American Tradition Of Excellence

355 N DELAWARE ST • PO BOX 30
NAPPANEE IN 46550-0030
PHONE 219 773-7791 • FAX 219 773-2895
<http://www.newmarcorp.com>

Kountry Star Diesel Pusher

2000 Model

Life is to be enjoyed, and the new Kountry Star Diesel Pusher will get you there. This model has all of the comfort and convenience features you want in a Newmar motorhome, along with the diesel power you need for tackling hills, towing cars or simply cruising the highways and byways. Whether your final destination is a campground, stadium parking lot or a friend's driveway, the Kountry Star Diesel Pusher is the value-packed motorhome for you.

Standard Features

Motorized Chassis Features

- Standard Chassis - Spartan Summit 260HP
- Anti-lock braking system
- Cruise control
- Tilt and telescope steering wheel

Air Conditioning and Heating

- 15M brisk central air conditioner
- Dash heater/air conditioner high output
- LP leak detector

Appliances and Accessories

- Six gallon gas/electric water heater - direct spark ignition
- 22" microwave (not available on 3565)
- 30" microwave (standard on 3565)
- 19" color TV (in dash overhead)
- Three-burner recessed range with glass oven door (piezzo ignition)
- AM/FM stereo with CD player (in dash)
- Bi-fold range cover laminated with matching countertop material
- Cable TV connection with RG6 coaxial
- Carbon monoxide detector
- Dometic 3862 refrigerator (8 cu. ft.)
- Rear view monitor prep
- Satellite prep - phone/TV jack and recept
- Telephone connection with 1 phone jack
- TV antenna with power booster and 2 jacks
- VCR prep with TV video selector switch

Cabinets and Furniture

- Flexsteel hide-a-bed sofa (where shown on the floorplan drawing as a 68, 74 or 84 sofa)
- Corian countertop in kitchen with color-coordinated edge and acrylic sink
- Oak hardwood, raised panel doors on overhead cabinets, flat panel doors on base cabinets
- Drawers with metal guides
- Flexsteel front seats - swivel/recline with 3 point seat belt
- Hidden-leaf dinette table with two fixed chairs and two folding chairs
- Lifts on bed top to access storage area

Electrical Features

- 55 amp converter with charger
- Two 6-volt batteries
- Battery disconnect (for house battery)
- 6.6 Generac generator with LP conversion and automatic changeover
- 5-watt solar panel to charge chassis battery
- 50-amp electrical service with flexible cord
- Driving lights
- Exterior security lights (one installed on each side)
- Interior courtesy lights
- Lights in exterior storage compartment
- Lights in wardrobes
- Switched recept for engine block heater



2000 Kountry Star
Diesel Pusher

Exterior Features

- Bright Tek roof with 7mm decking
- Convex exterior mirrors with remote control and defrost
- Gel-coated fiberglass exterior sides and end caps
- Hitch for towing car (with two extra 14-gauge wires for customer use) (Class-3, 5000# rating)
- Mud flaps (front and rear)
- Roof rack and ladder

Interior Features

- Carpeting Stainmaster, 40oz. 100% nylon plush saxony with Stainmaster finish
- Vinyl flooring in kitchen and bath area
- Day/night pleated window shades and Lambrequins
- Decorative wall clock and mirror
- Hardwood trim on entrance door
- Hardwood/fabric fascia on living area slideout
- Miniblind window shades in kitchen area
- Quilted bedspread with reverse sham and accent pillow
- Sink covers - two
- Smoke detector and 10 BC fire extinguisher
- Woven soft touch ceiling

Plumbing/Bath Features

- White bath accessories (two towel bars, one tissue holder and robe hook)
- China stool with spray attachment
- Demand water system with Shurflo pump
- Exterior shower (located on off door side)
- Fiberglass tub/shower with enclosure
- Monitor panel
- Sewage holding tank rinse
- Water heater bypass system
- Water pump switches (located in bathroom, above entrance door and exterior near gate valves)

Construction Features

- 5/8" foam insulation in sidewalls and ceiling
- Aluminum frame sidewalls and roof construction 16-inch on center
- R7 fiberglass insulation in sidewalls and floor, R11 in roof

Windows, Awnings and Vents

- Automatic double entrance door step
- Fantastic vent with rain sensor in kitchen
- Power vent in bath area with wall switch
- Skylight in bathroom (located above tub/shower)
- Stainless steel wheel simulators
- Tinted safety glass windows



Newmar Quality: A Way of Life

355 N. Delaware Street • PO Box 30
Nappanee, IN 46550-0030
Phone 219.773.7791 • Fax 219.773.2895
<http://www.newmarcorp.com>

Optional Features

Floorplan—Specific Items

- Twin beds

Air Conditioning and Heating

- Extra 15M brisk air conditioner

Appliances and Accessories

- 30" convection microwave with three burner cooktop
- CB antenna
- CB radio
- Ceiling fan in bedroom (not available on floorplans with a slideout)
- Compact washer/dryer (available on 3565)
- Dometic 1062 refrigerator (10 cu. ft.)
- Icemaker added to Dometic refrigerator
- Rear view monitor system
- Trumpet horn
- Washer/dryer prep (for compact washer/dryer - available on 3565)

Cabinets and Furniture

- 6-way power driver's seat
- Flexsteel front seats - leather/vinyl with 6-way power
- Flexsteel swivel/rocker recliner, leather/vinyl in lieu of standard
- Pull out pantry baskets (available on 3565)
- Snow maple cabinets

Electrical Features

- 7.0. Power Tech diesel quiet series generator in lieu of standard
- 400-watt inverter (for dash TV)
- Fluorescent lights in ceiling and overhead cabinets
- Recessed lights

Exterior Features

- Hydraulic leveling jacks with "touch" manual control

Interior Features

- Simulated plank floor in kitchen area
- Sun shade on front side of windows (price per shade)

Plumbing / Bath features

- Water filter with drink dispenser at kitchen sink

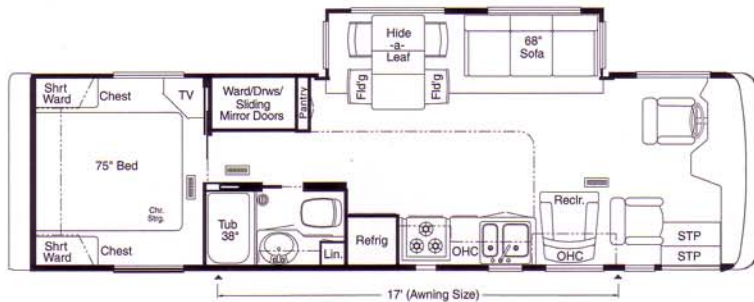
Windows, Awnings and Vents

- Fantastic vent in lieu of standard bath power vent
- A&E 8500 side awning
- A&E 9000 side awning
- Double pane windows (not available on driver/ passenger area)
- Driver's side door with power window

Specifications

— Model 2000KSDP3251

Tire Size	GVWR	Length	Height	Width	Fresh Water	Grey Water	Sewage Cap	Heat Cap	GCWR	FUEL
235/80R-22.5C	22000 lbs.	32' 10"	11' 08"	101"	63 gals.	45 gals.	45 gals.	35000	26000 lbs.	70 gals.



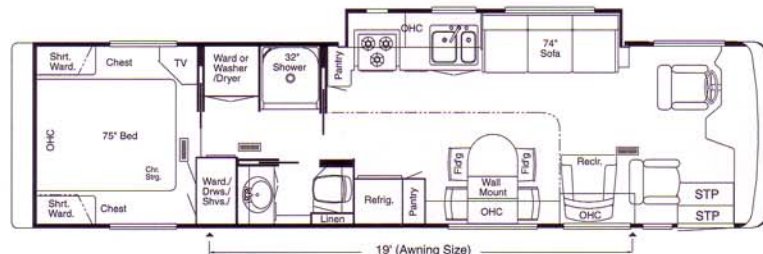
— Model 2000KSDP3550

Tire Size	GVWR	Length	Height	Width	Fresh Water	Grey Water	Sewage Cap	Heat Cap	GCWR	FUEL
235/80R-22.5C	22000 lbs.	35'	11' 08"	101"	63 gals.	45 gals.	45 gals.	35000	26000 lbs.	70 gals.

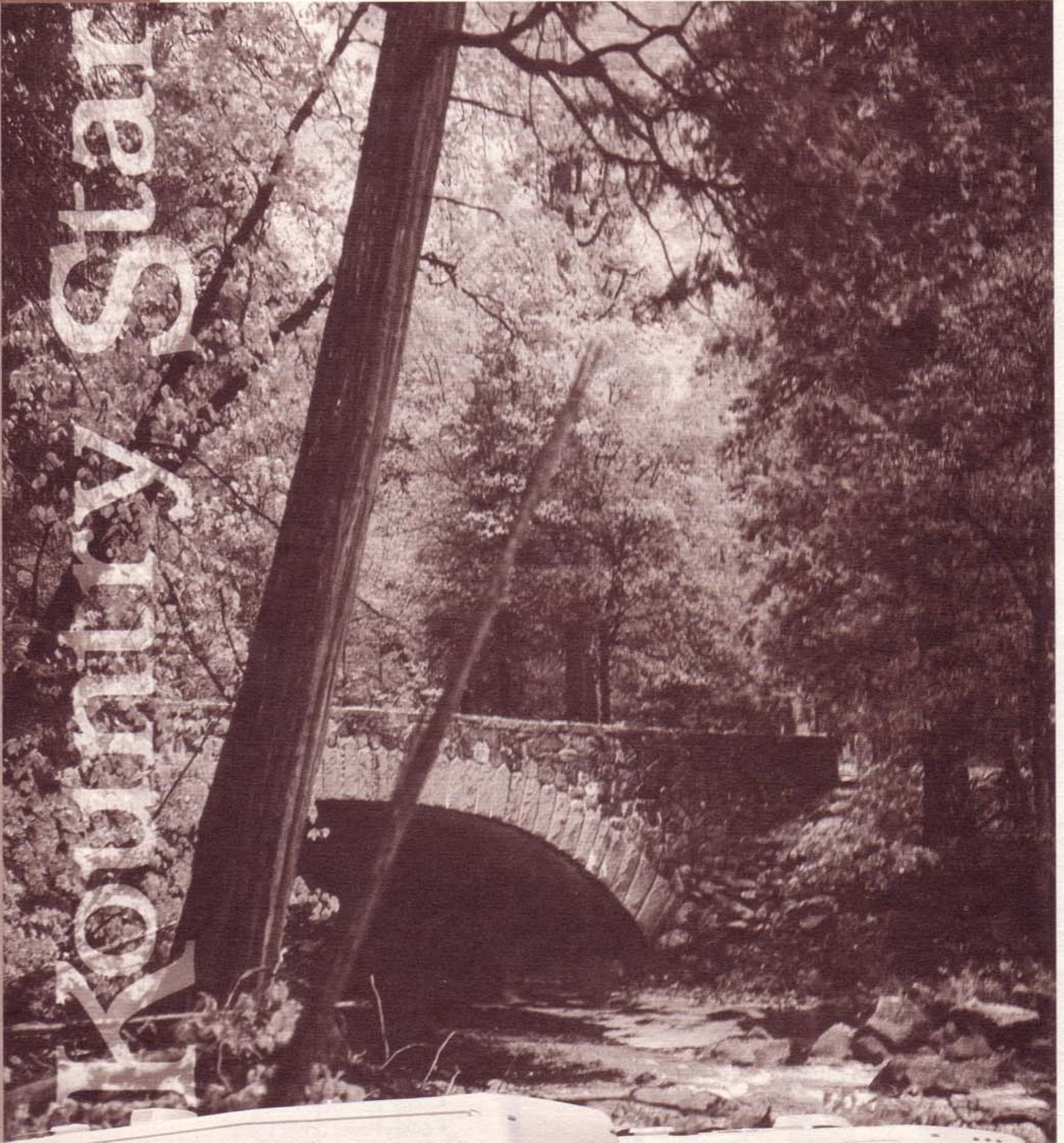


— Model 2000KSDP3565

Tire Size	GVWR	Length	Height	Width	Fresh Water	Grey Water	Sewage Cap	Heat Cap	GCWR	FUEL
255/80R-22.5C	22000 lbs.	35'	11' 08"	101"	63 gals.	45 gals.	45 gals.	35000	26000 lbs.	70 gals.



2000 KOUNTRY STAR BY NEWMAR



FIFTH WHEEL • CLASS A

CLASS A STANDARD FEATURES

Motorized Chassis Features

- Standard Chassis - Ford F-53 Chassis w/V-10 Engine
- Cruise Control
- Spare Tire
- Tilt Steering Wheel

Air Conditioning & Heating

- 15M Brisk Central Air Conditioner
- Dash Heater/Air Conditioner High Output
- LP Leak Detector

Appliances & Accessories

- 6 Gal. Gas/Electric Water Heater w/Direct Spark Ignition
- 22" Microwave (not available on 3565, 3767)
- 30" Microwave (standard on 3565, 3767)
- 19" Color TV (in dash overhead)
- 3-Burner Recessed Range w/Glass Oven Door (piezo ignition)
- AM/FM Stereo w/CD Player (in dash)
- Bi-fold Range Cover Laminated w/Matching Countertop Material
- Cable TV Connection w/RG6 Coaxial
- Dometic 3862 Refrigerator (8 cu ft)
- Hardwood Raised Panel Refrigerator Front
- Range Hood w/Light & Fan (not available on 3565, 3767)
- Rear View Monitor Prep
- Satellite Prep - Phone/TV Jack & Recept
- Telephone Connection w/1 Phone Jack
- TV Antenna w/Power Booster & 2 Jacks

Cabinets & Furniture

- Flexsteel Magic Bed Sofa (Standard on 3565, 3758, 3767) (74" or 84")
- Corian Countertop Color Coordinated Edge & Integrated Porcelain Lavatory In Bath
- Corian Countertop In Kitchen w/Color Coordinated Edge & Acrylic Sink
- Drawers w/Metal Guides
- Flexsteel Recliner
- Hidden Leaf Dinette Table w/Two Fixed Chairs & Two Folding Chairs
- Oak Raised Panel Cabinet Doors

Electrical Features

- 55 AMP Converter w/Charger
- Battery Disconnect (for house battery)
- 5.5 Generac Generator w/One Remote Switch & Automatic Changeover
- 5 Watt Solar Panel To Charge Chassis Battery
- 50 AMP Electrical Service w/Flexible Cord
- Driving Lights
- Emergency Engine Start Switch
- Exterior Security Lights (one installed on each side)
- Interior Courtesy Lights
- Lights In Exterior Storage Compartments w/Master Switch On Dash
- Lights In Wardrobes

Exterior Features

- Convex Exterior Mirrors w/Remote Control & Defrost
- Gel-Coated Fiberglass Exterior Sides
- Hitch For Towing Car (w/2 extra 14 gauge wires for customer use) (class-2, 5000# rating)
- Roof Rack & Ladder
- Rubber Roof w/9MM Decking

Interior Features

- Carpeting Stainmaster, 40 oz. 100% Nylon Plush Saxony w/Stainmaster Finish
- Vinyl Floor In Kitchen & Bath Area
- Day/Night Pleated Window Shades & Lambrequins
- Mini Blind Window Shades In Kitchen Area
- Quilted Bedspread w/Reverse Sham & Accent Pillow

Plumbing/Bath Features

- Aqua Magic IV Stool
- China Stool w/Spray Attachment
- Exterior Shower (located on off door side)
- Fiberglass Tub/Shower w/Enclosure
- Monitor Panel
- Sewage Holding Tank Rinse
- Water Heater Bypass System

Construction Features

- Aluminum Sidewalls & Roof Construction, 16" On Center
- Slideout Tray In Rear Bumper For Spare Tire

Windows, Awnings & Vents

- Automatic Entrance Door Step
- Fantastic Vent w/Rain Sensor In Kitchen
- Power Vent In Bath Area w/Wall Switch
- Lighted Acrylic Assist Handle At Entrance Door
- Skylight In Bathroom (located above tub/shower)
- Stainless Steel Wheel Simulators

CLASS A OPTIONAL FEATURES

Motorized Chassis Features

- Optional Chassis - Freightliner Diesel (210 HP) (available on 3357, 3565)

Appliances & Accessories

- 30" Convection Microwave w/3-Burner Cooktop
- Compact Washer/Dryer (not available on 3357)
- Dometic 1062 Refrigerator (10 cu ft)
- Ceiling Fan In Bedroom (not available on floorplans with a slideout)
- Rear View Monitor System
- IceMaker Added To Dometic Refrigerator (where available)

Cabinets & Furniture

- Snow Maple Cabinets
- 6-Way Power Driver's Seat
- Built-in Booth Dinette ilo Standard
- Flexsteel Front Seats - Leather/Vinyl w/6-Way Power

Electrical Features

- 400 Watt Inverter (for dash TV)

Interior Features

- Simulated Plank Floor In Bath
- Simulated Plank Floor In Kitchen Area

Kountry Star® Class A Freightliner Chassis

Model	Engine H.P.	Axle Ratio	Fuel Cap.	Wheel Base	Front GAWR	Rear GAWR	GVWR	GCWR	Approx. UVW	Approx. NCC
SA3357	210	3.31	90	200	7000	13500	20500	25500	17815	2685
SA3565	210	3.31	90	220	7000	13500	20500	25500	17490	3010

Lengths, Heights, Widths and Dry Weights are approximate. Weight will vary based on optional equipment added to the above base weight.

Kountry Star® Class A Ford Chassis

Model	Engine H.P.	Axle Ratio	Fuel Cap	Wheel Base	Front GAWR	Rear GAWR	GVWR	GCWR	Approx. UVW	Approx. NCC
SA3357	275	5.38	75	208	7000	13500	20500	26000	17265	3235
SA3565	275	5.38	75	220	7000	13500	20500	26000	17365	3135
SA3758	275	5.38	75	240	7000	13500	20500	26000	17485	3015
SA3762	275	5.38	75	240	7000	13500	20500	26000	17090	3410
SA3767	275	5.38	75	240	7000	13500	20500	26000	17675	2825

Lengths, Heights, Widths and Dry Weights are approximate. Weight will vary based on optional equipment added to the above base weight.

Kountry Star® Class A Sizes & Capacities

Model	Approx. Overall Length	Approx. Overall Width	Approx. Interior Overall Height	Interior Width	Interior Height	Grey Tank (Gal)	Sewage Tank (Gal)	Water Tank (Gal)	L/P Tank (Gal)	Furnace (btu)	Water Heater
SA3357	33' 6"	101"	11' 8"	95.5"	78"	50 gal	50 gal	56 gal	32	35000 btu	6 gal
SA3565	35' 6"	101"	11' 8"	95.5"	78"	50 gal	50 gal	56 gal	32	35000 btu	6 gal
SA3758	37' 6"	101"	11' 8"	95.5"	78"	50 gal	50 gal	56 gal	32	40000 btu	6 gal
SA3762	37' 6"	101"	11' 8"	95.5"	78"	50 gal	50 gal	56 gal	32	40000 btu	6 gal
SA3767	37' 6"	101"	11' 8"	95.5"	78"	50 gal	50 gal	56 gal	32	40000 btu	6 gal

Lengths, Heights, Widths, Dry Weights and Hitch Weights are approximate. Weight will vary based on optional equipment added to the above base weight.

CLASS A OPTIONAL FLOORPLANS



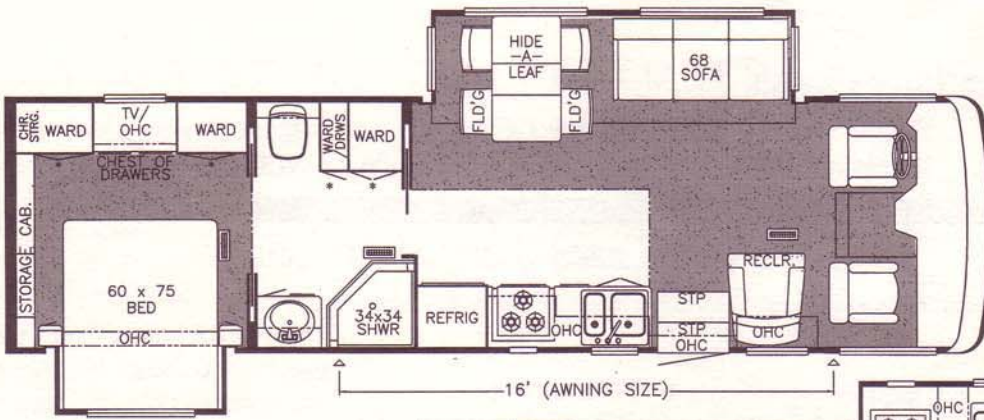
K096
75" Twin beds -
SA 3758, 3767



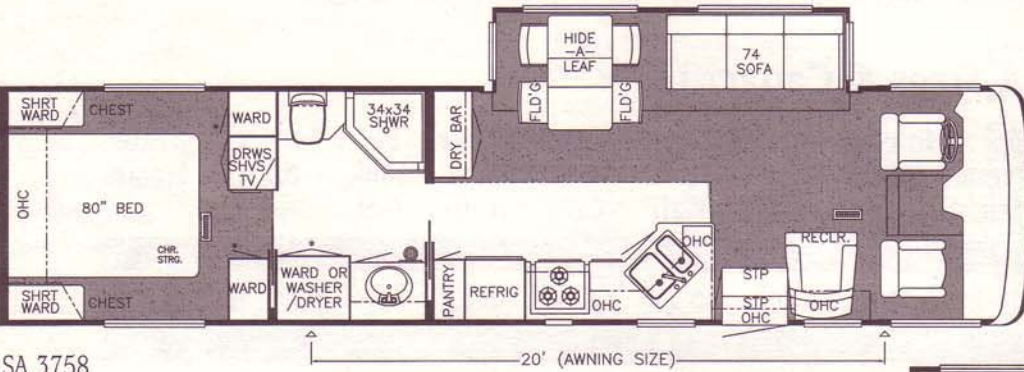
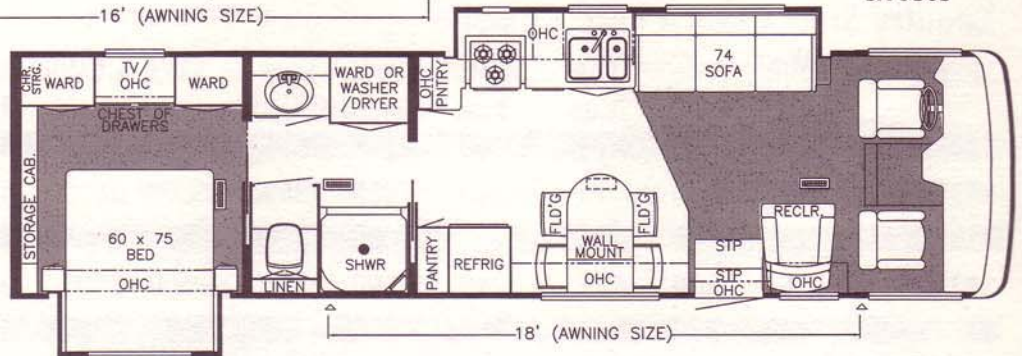
P201
Enclosed stool room w/straight shower -
SA 3758



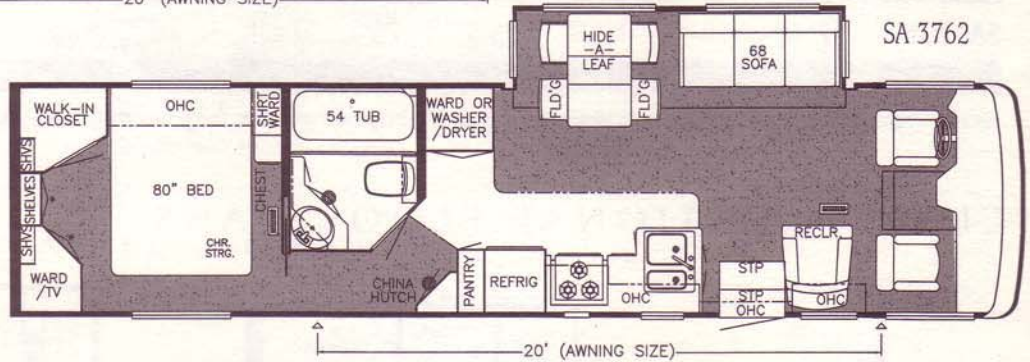
K950
Honeymoon suite bedroom -
SA 3758, 3762



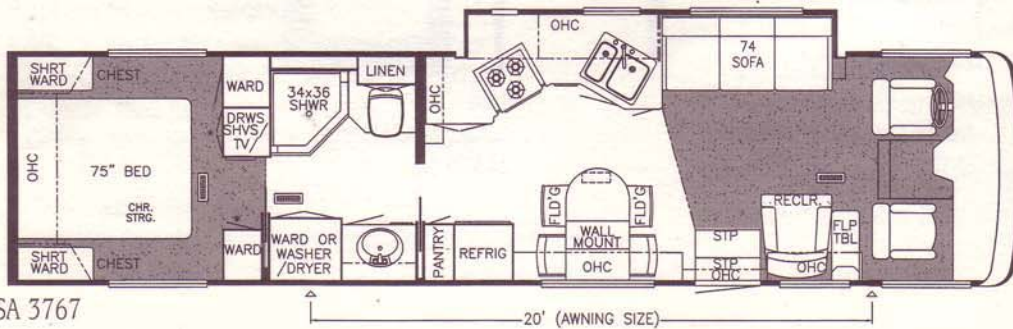
SA 3357



SA 3758



SA 3762



SA 3767

KOUNTRY STAR CLASS A INSULATION "R" VALUES

Roof	Sidewalls	Floor
R-17	R-12	R-12

Prices, specifications, and floorplans are subject to change at Newmar's discretion without prior written notice or obligation. Some floorplans may show optional chairs or end tables. See dealer for availability.

FIFTH WHEEL STANDARD FEATURES

Air Conditioning & Heating

- 2-30# LP Gas Bottles w/Automatic Regulator
- 15M Brisk Central Air Conditioner
- LP Leak Detector

Appliances & Accessories

- 10 Gal. Gas/Electric Water Heater w/Direct Spark Ignition
- 22" Microwave
- 3-Burner Range w/Glass Oven Door (piezo ignition)
- AM/FM Stereo w/Cassette & CD Player
- Bi-fold Range Cover
- Cable TV Connection w/RG6 Coaxial
- Ceiling Fan In Living Room Area
- Dometic 3862 Refrigerator (8 cu ft)
- Hardwood Raised Panel Refrigerator Front
- Range Hood w/Light & Fan
- Telephone Connection w/1 Phone Jack
- TV Antenna w/Power Booster & 2 Jacks

Cabinets & Furniture

- Flexsteel Hide-A-Bed Sofa (68")
- Flexsteel Magic Bed Sofa (74")
- Corian Countertop In Kitchen w/Color Coordinated Edge & Acrylic Sink

Cabinets & Furniture (Cont.)

- Dinette Table w/Hardwood Top & Four Chairs
- Drawers w/Metal Guides
- Laminate Countertop w/Color Coordinated Edge & Porcelain Lavatory In Bath
- Lifts On Bed Top To Access Storage Area
- Oak Hardwood Raised Panel Cabinet Doors

Electrical Features

- 55 AMP Converter w/Charger
- 12 Volt Battery
- Lights In Wardrobes

Exterior Features

- Filon Fiberglass Exterior Sides
- Gel-Coated Fiberglass End Caps
- Power Front Jacks
- Roof Rack & Ladder
- Rubber Roof w/9MM Decking
- Snaps For Fifth Wheel Jacks
- Spare Tire
- Stabilizer Jacks (1 pair)

Interior Features

- Carpeting Stainmaster, 40 oz. 100% Nylon Plush Saxony w/Stainmaster Finish
- Vinyl Floor In Kitchen, Foyer & Bath Area
- Day/Night Pleated Window Shades & Lined Drapes

Interior Features (Cont.)

- Mini Blind In Kitchen Area
- Quilted Bedspread w/Reverse Sham & Accent Pillow
- Smoke Detector & 5 BC Fire Extinguisher
- Woven Soft Touch Ceiling

Plumbing/Bath Features

- Aqua Magic IV Stool
- Fiberglass Tub/Shower w/Enclosure
- Monitor Panel
- Sewage Holding Tank Rinse
- Water Heater Bypass System

Construction Features

- 12" I-Beam Frame w/Maximum Storage
- Aluminum Sidewalls & Roof Construction, 16" On Center
- Slideout Tray In Rear Bumper For Spare Tire

Windows, Awnings & Vents

- Power Vent In Bath Area w/Wall Switch
- A&E 8500 Side Awning
- Lighted Acrylic Assist Handle At Entrance Door

FIFTH WHEEL OPTIONAL FEATURES

Appliances & Accessories

- Dometic 1062 Refrigerator (10 cu ft)
- Sears Washer/Dryer w/50 AMP Electrical Service
- Icemaker Added To Dometic Refrigerator

Cabinets & Furniture

- Flexsteel Glider Recliner
- Snow Maple Cabinets

Electrical Features

- 50 AMP Electrical Service
- Fluorescent Lights In Living Room & Kitchen Area

Interior Features

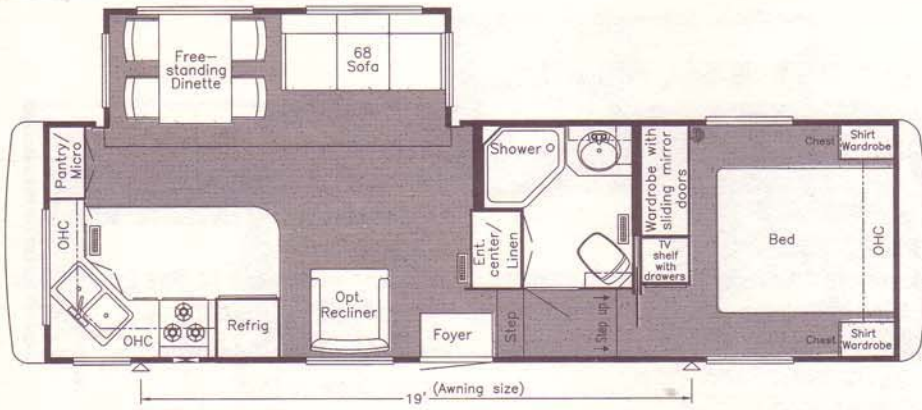
- Lambrequin Window Treatment
- Simulated Plank Floor In Kitchen & Foyer Area
- Simulated Plank Floor In Bath

Windows, Awnings & Vents

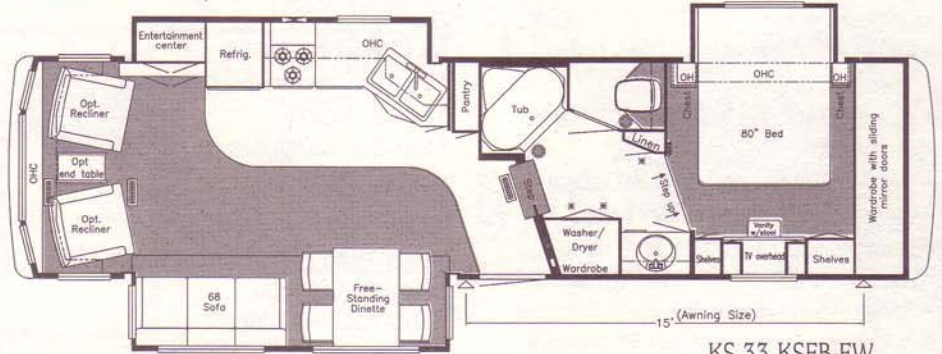
- Double Pane Tinted Safety Glass Windows
- Fantastic Vent w/Rain Sensor In Kitchen
- Skylight In Bathroom (located above tub/shower)

Towable Chassis Features

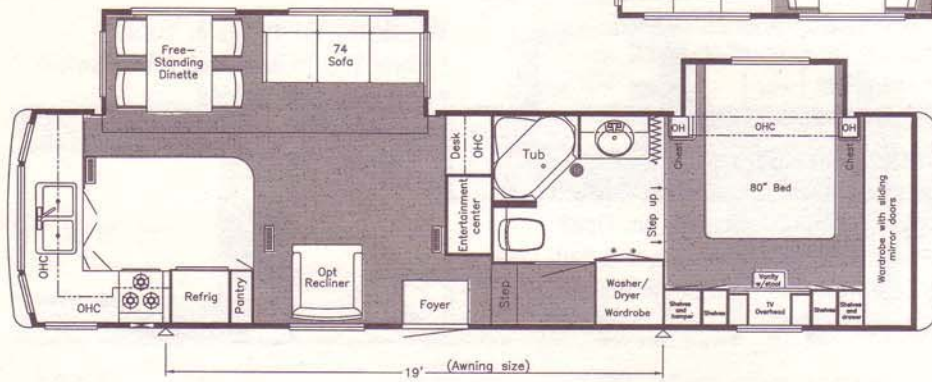
- Tandem Axle Dual Wheels
- Independent Mor/ryde Suspension



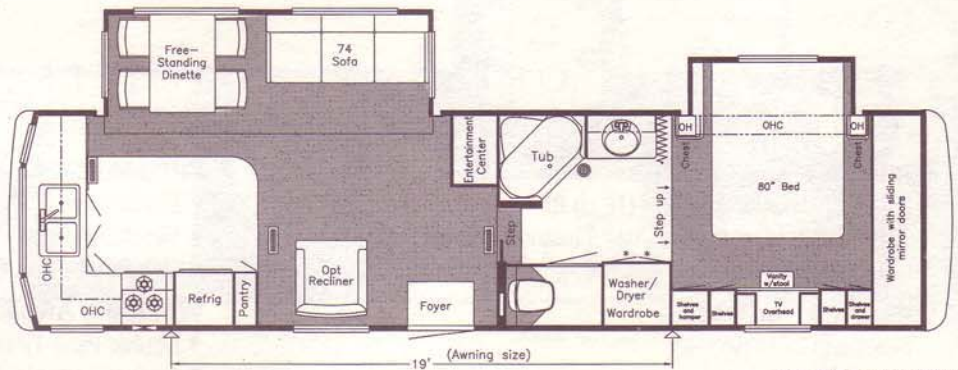
KS 30 RKCL-FW



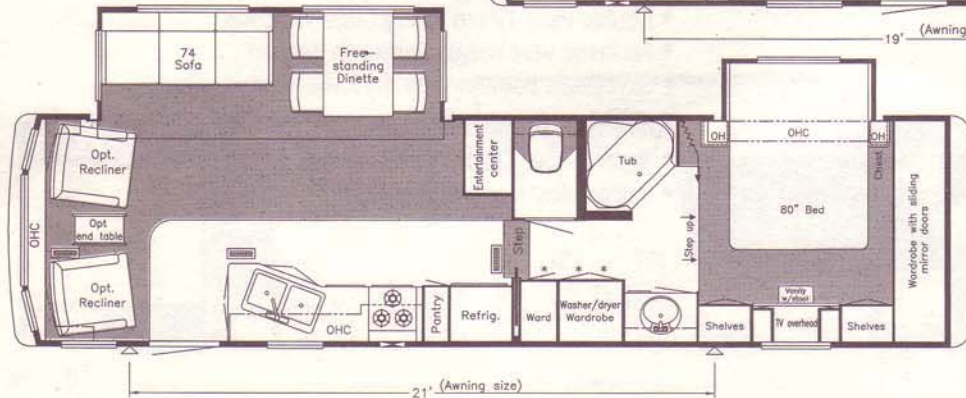
KS 33 KSFB-FW



KS 34 BKSA-FW



KS 34 BKWB-FW



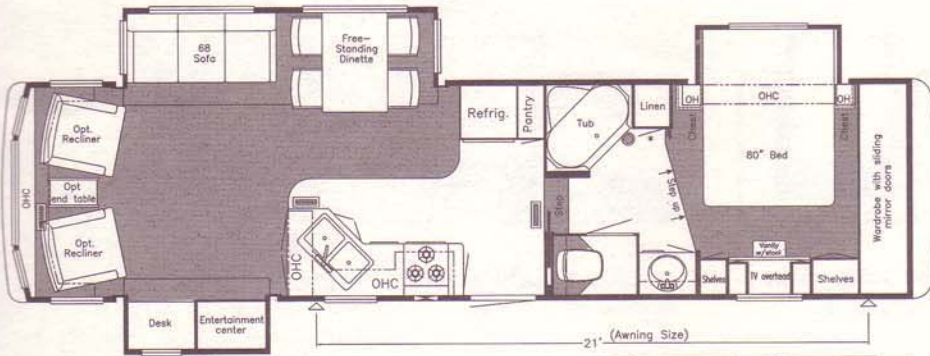
KS 34 SKRL-FW

Prices, specifications, and floorplans are subject to change at Newmar's discretion without prior written notice or obligation. Some floorplans may show optional chairs or end tables. See dealer for availability.

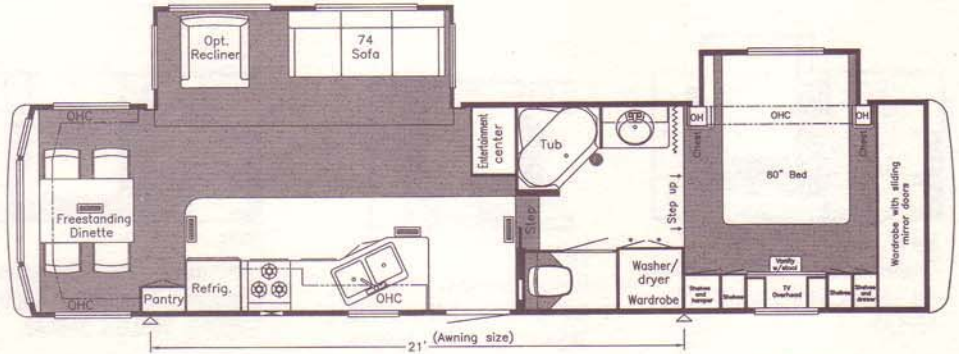
T H W H E E L F L O O R P L A N S

KOUNTRY STAR FIFTH WHEELS INSULATION "R" VALUES

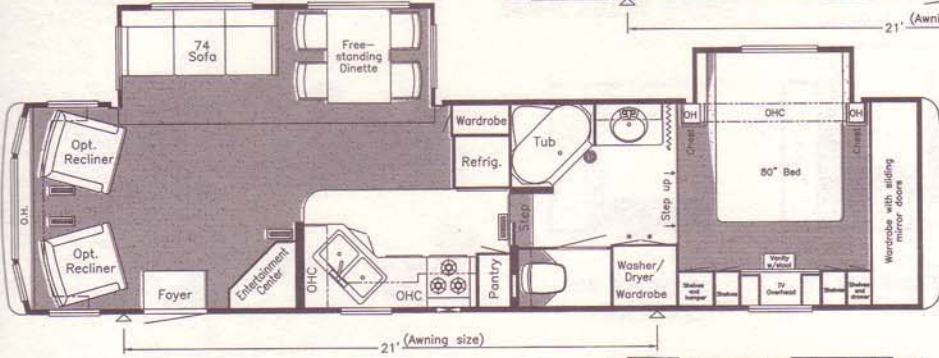
Roof	Sidewalls	Floor
R-12	R-12	R-12



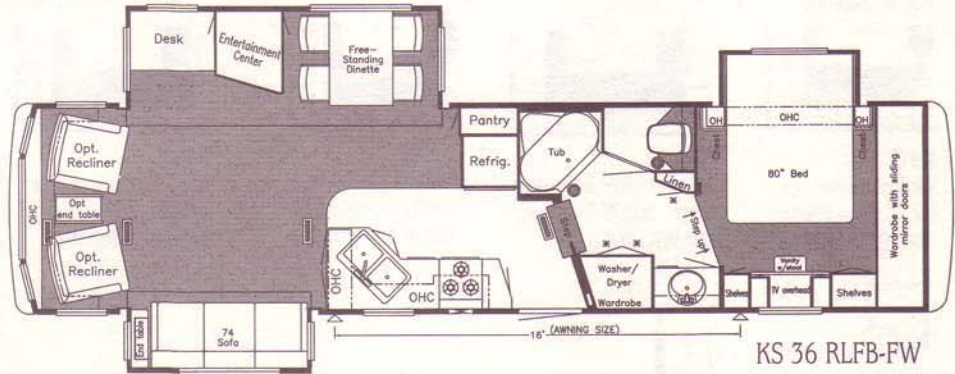
KS 35 DSRL-FW



KS 36 RDSK-FW



KS 36 RLAK-FW



KS 36 RLFB-FW

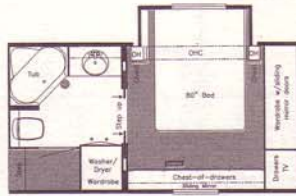
Kountry Star® Fifth Wheel Sizes & Capacities

Model	Axle	Axle Cap	Tire Size	GAWR	GVWR	Length	Height	Width	Approx. Dry Weight	Approx. Hitch Weight	Fresh Water	Grey Water	Sewage Cap	Approx. Hitch Height	Heat Cap
KSF30RKCL	2	7000	235-85-R16E	6084	14250	31' 10"	12' 3"	101"	10642	1893	100 gal	50 gal	50 gal	47"	35000
KSF33KSF	2	7000	235-85-R16G	7000	16250	35' 1"	12' 3"	101"	12746	2145	100 gal	50 gal	50 gal	47"	42000
KSF34BKSA	2	7000	235-85-R16G	7000	16250	35' 11"	12' 3"	101"	12168	2625	75 gal	92 gal	50 gal	47"	42000
KSF34BKWB	2	7000	235-85-R16G	7000	16250	35' 11"	12' 3"	101"	11959	2272	75 gal	92 gal	50 gal	47"	42000
KSF34SKRL	2	7000	235-85-R16G	7000	16250	35'	12' 3"	101"	12000	2300	75 gal	92 gal	50 gal	47"	35000
KSF35DSRL	2	7000	235-85-R16G	7000	16250	35' 10"	12' 3"	101"	12500	2300	75 gal	92 gal	40 gal	47"	42000
KSF36RDSK	2	7000	235-85-R16G	7000	16250	37' 6"	12' 3"	101"	12585	2643	75 gal	92 gal	50 gal	47"	55000
KSF36RLAK	2	7000	235-85-R16G	7000	16250	37' 6"	12' 3"	101"	12789	2174	75 gal	92 gal	50 gal	47"	55000
KSF36RLFB	3	6000	235-85-R16E	6000	18000	37' 6"	12' 3"	101"	13877	2497	75 gal	82 gal	50 gal	47"	55000

Lengths, Heights, Widths, Dry Weights and Hitch Weights are approximate. Weight will vary based on optional equipment added to the above base weight.



M399
Keep S.O. w/vanity, add sliding doors - KSF 34BKWB, 36RDSK, 36RLAK



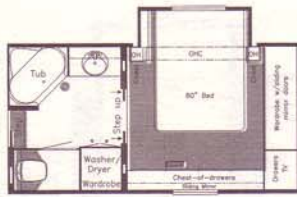
M429
Dresser center & sliding doors ilo std. - KSF 34BKSA



M461
Vanity/dresser w/sliding doors ilo of std. - KSF 34BKSA



M700
Cabover S.O. w/80" bed KSF 30RKCL



M439
Dresser center & sliding doors ilo std. - KSF 34BKWB, 36RDSK, 36RLAK



K031
Honeymoon suite ilo bedroom S.O. w/vanity - KSF 34BKSA, 34BKWB, 36RDSK, 36RLAK



K996
Honeymoon suite w/sliding doors ilo bedroom S.O. w/vanity - KSF 34BKWB, 36RDSK, 36RLAK



M464
Vanity/dresser w/sliding doors ilo std. - KSF 34BKWB, 36RDSK, 36RLAK



K997
Honeymoon suite w/sliding doors ilo bedroom S.O. w/vanity - KSF 34BKSA



M389
Keep S.O. w/vanity, add sliding doors - KSF 34BKSA



K033
Honeymoon suite - KSF 30RKCL



M762
Vanity/dresser center ilo std. - KSF 34SKRL



M763
Vanity/dresser center ilo std. - KSF 35DSRL



M479
Vanity/dresser center ilo std. - KSF 33KSF, 36RLFB



M434
Dresser center ilo vanity center - KSF 34BKSA, 34BKWB, 36RDSK, 36RLAK



M758
Dresser center ilo vanity center - KSF 35DSRL



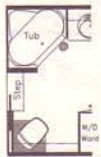
M460
Vanity/dresser center ilo std. - KSF 34BKSA, 34BKWB, 36RDSK, 36RLAK



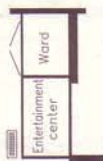
M757
Dresser center ilo vanity center - KSF 34SKRL



M435
Dresser center ilo vanity center - KSF 33KSF, 36RLFB



P162
Unenclosed stool room - KSF 34BKWB, 36RDSK, 36RLAK



K941
Wardrobe ilo desk - KSF 34BKSA

Compliments Of:

We invite you to visit our state of the art production facility in Nappanee, Indiana.

Plant tours are offered at 10:00 a.m. and 1:00 p.m., Monday through Friday.



An American Tradition Of Excellence

355 N DELAWARE ST • PO BOX 30
NAPPANEE IN 46550-0030
PHONE 219 773-7791 • FAX 219 773-2895
<http://www.newmarcorp.com>



Don't forget to check out the Klub—the Newmar Kountry Klub, that is. All you need for eligibility is to be a proud owner of any of the fine Newmar recreational vehicles.