

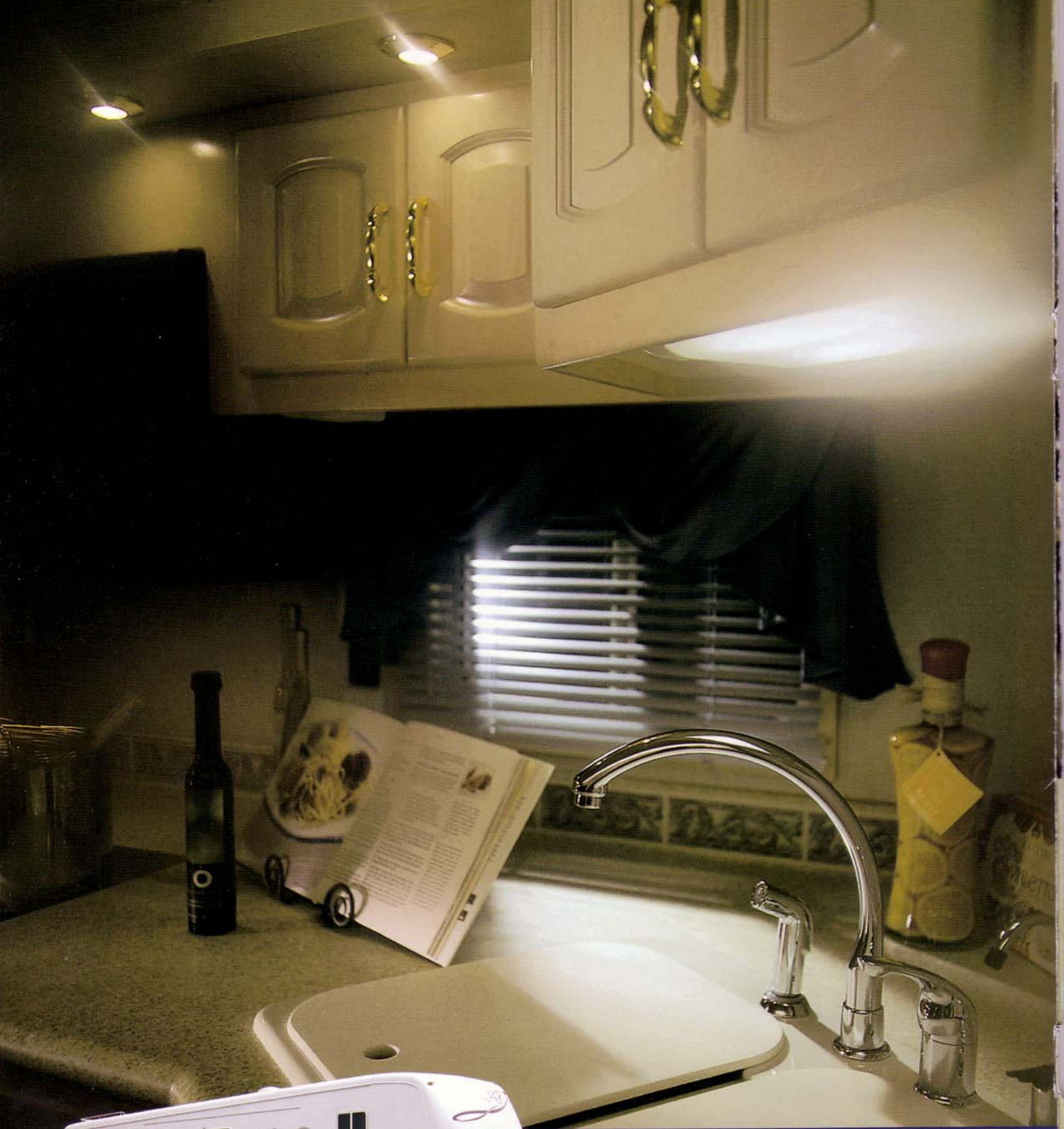
2 0 0 1   K O U N T R Y   A I R E



F I F T H   W H E E L

N E W   M A R   C O R P O R A T I O N





"YOU CAN'T BUILD A REPUTATION ON  
WHAT YOU ARE GOING TO DO."

HENRY FORD



## REPUTATION.

In Nappanee, Indiana, where we build the Kountry Aire Fifth Wheel, we know a thing or two about reputation. You can't buy it. You can't make it up. You can't fake it. But it makes all the difference in the world. We choose barbers, butchers and banks based on their reputations. Are they dependable? Do they deliver what they promise? At Newmar, our reputation is our most important product. We would never do anything less than our very best.

At Newmar, we live by our reputation. We build every Kountry Aire Fifth Wheel with the idea that it carries a message about our company. Every time it pulls into a campground, or the driveway of a friend or relative, the Kountry Aire speaks for Newmar. That's why we build it so well. 16-inch on-center sidewall framing with aluminum studs. A 12-inch I-beam frame with a full-height outrigger. Heated, insulated and enclosed holding tanks. The list goes on.

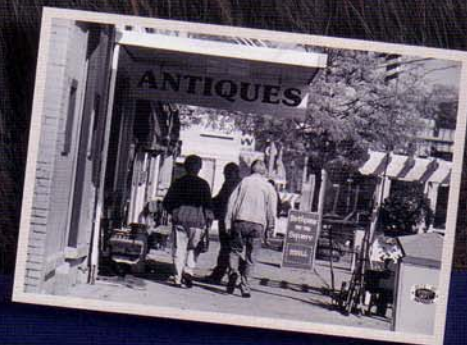
The care we take designing and building the Kountry Aire Fifth Wheel has resulted in a reputation as one of the industry's finest towable RVs. Ask a Kountry Aire owner. Our reputation says it all.

**NEWMAR QUALITY: A WAY OF LIFE.**





THE KOUNTRY AIRE FIFTH WHEEL



## NEWMAR QUALITY. GOING OUR WAY?



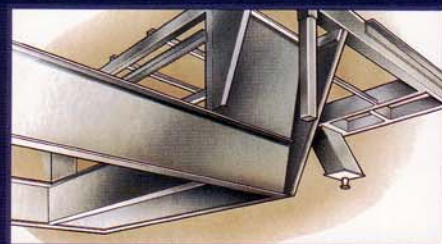
At Newmar, our way is the highway. Our craftspeople have dedicated their talents to making your life on the road the best that it can be. Life is too short to spend it all in one place, so the Kountry Aire Fifth Wheel is designed to surround you in comfort and luxury regardless of the day's destination. Top of the line engineering includes dual tandem axles with dual wheels – eight wheels total. Whether you select the 37, 38 or 39 foot configuration, our craftsmanship will accompany you every turn along your way.

MODEL SHOWN IS KAFW 38KSWB.





NEWMAR INVENTED THE POWER PORCH, A SET OF STEPS THAT FOLD OUT WITH THE FLIP OF A SWITCH AND PROVIDE A TOP STEP LARGE ENOUGH TO ALLOW YOU TO OPEN THE DOOR WITHOUT BACKING UP. THIS OPTIONAL FEATURE IS A NEWMAR EXCLUSIVE.



EVER NOTICE THAT I-BEAMS ARE USED WHEN CONSTRUCTING SKYSCRAPERS? THE I-BEAM IS STRONGER THAN A BOX-CHANNEL BEAM. THAT'S WHY NEWMAR USES A 12-INCH I-BEAM WHEN CONSTRUCTING ITS FIFTH WHEEL FRAME.



## THE KOUNTRY AIRE FIFTH WHEEL



## YOUR CASTLE ON WHEELS.



SOFA/DINETTE SHOWN IN PERSIAN SURROUNDED BY  
OPTIONAL CHERRY HARDWOOD CABINETS AND TRIM.

In Nappanee, we understand the importance of home...even when it's home on the road. Well, this castle may not come with a moat, but it offers a certain advantage King Arthur couldn't have dreamed of. It goes where you go. Inside the Kountry Aire we make sure that you feel like a king or a queen with attention to detail fit for royalty. It's simply luxurious. Isn't it good to know that when you're done slaying dragons or catching fish – your choice – that you will be surrounded in top-of-the-line style fit for a very important person. You.





SOFA/DINETTE IN A NEWMAR-ASSEMBLED FLAT-FLOOR POWER SLIDEOUT SHOWN IN GLACIER BLUE DESIGN WITH A KITCHEN FEATURING AN ISLAND WORKSTATION AND OPTIONAL MAPLE CABINETS.



HARDWOOD CABINETRY, SHOWN IN OPTIONAL CHERRY, BUILT-IN NIGHTSTANDS AND A CONVENIENT VANITY, SURROUND THE COMFORTABLE QUEEN-SIZE BED.

A SPACIOUS LIVING AREA SHOWN IN GLACIER BLUE WITH OPTIONAL MAPLE CABINETS AND TRIM.



FLEXSTEEL® RECLINERS, A COMPUTER DESK, AM/FM STEREO CASSETTE AND CD PLAYER AND COLOR TV MAKE UP THE ENTERTAINMENT CENTER.



# "WE MASS PRODUCE IN VOLUMES OF ONE."

"It is my deepest belief that we need to treat others as we treat ourselves, that I should treat our customers in the same manner as I would want to be treated. I believe these values helped make our company what it is today. They affect everything we do."



**QUALITY DESIGN** "We don't take short cuts, we construct. No matter what Newmar model our customers bought, they were assembled on the same production line, built with the same high standards and care."

**TESTING** "We test everything. All of our motorhomes, for instance, are tested for leaks, for alignment and for weight before they leave the assembly line. We want to be sure our products work the way our customers expect them to work."

**INNOVATIONS** "We innovate for the long-term quality of our customer's life. For example, there's our flat-floor power slide out, which gives our customers as much living space as possible. We offer practical features that will make your life in a Newmar RV easier."

**INDIVIDUAL RESPONSIBILITY** "If one of our quality-control inspectors finds a problem in the plumbing, they pull a worker from the plumbing team to fix it. We believe it's the team's responsibility, no one else's. Our workers feel a personal obligation to make a customer's RV the best possible."

**NEWMAR QUALITY** "When it's all said and done, this translates to Newmar Quality. Customers must be able to enjoy their Newmar RV for years to come. There is no other way for us."

When we say 'Newmar Quality: A Way of Life,' we truly live it."

Virgil Miller, President, Newmar Corp.



NEWMAR QUALITY: A WAY OF LIFE

355 N. DELAWARE STREET  
NAPPANEE, INDIANA 46550  
PH: 219.773.7791 • WWW.NEWMARCORP.COM

WE INVITE YOU TO VISIT OUR STATE-OF-THE-ART PRODUCTION FACILITY  
IN NAPPANEE, INDIANA. PLANT TOURS ARE OFFERED  
AT 10:00 A.M. AND 1:00 P.M., MONDAY THROUGH FRIDAY.

DON'T FORGET TO CHECK OUT THE NEWMAR KOUNTRY KLUB. ALL YOU NEED FOR ELIGIBILITY IS TO BE A PROUD OWNER OF ANY OF THE FINE NEWMAR RECREATIONAL VEHICLES.

FOR A COMPLETE PHOTO GALLERY OF ALL NEWMAR PRODUCTS, VISIT OUR WEBSITE: [WWW.NEWMARCORP.COM](http://WWW.NEWMARCORP.COM)

SOME FEATURES SHOWN IN OUR LITERATURE ARE OPTIONAL. COLORS AND FINISHES ARE PHOTOGRAPHIC REPRESENTATIONS AND MAY APPEAR DIFFERENTLY WHEN VIEWING ACTUAL MATERIALS. PRICES, SPECIFICATIONS AND FLOORPLANS ARE SUBJECT TO CHANGE AT NEWMAR'S DISCRETION WITHOUT PRIOR WRITTEN NOTICE OR OBLIGATION. PLEASE SEE YOUR DEALER FOR ACTUAL SAMPLES AND SPECIFICATIONS.



2001 KOUNTRY AIRE



FIFTH WHEEL  
SPECIFICATIONS



NEWMAR CORPORATION



## STANDARD FEATURES

### AIR CONDITIONING & HEATING

- 13,500 BTU Brisk® Central Air Conditioner
- 2 - 40# LP Gas Bottles - On Slides
- LP Leak Detector

### APPLIANCES & ACCESSORIES

- 10 Gallon Gas/Electric Water Heater - Direct Spark Ignition
- 22" Spacesaver Microwave
- Color TV in Entertainment Center
- 3-Burner Recessed Range with Glass Oven Door (electronic ignition)
- AM/FM Stereo with Cassette and CD Player
- Cable TV Connection with RG6 Coax
- Ceiling Fan in Living Room Area
- Dometic® 1062 Refrigerator (10 cu. ft.)
- Satellite Prep - Phone/TV Jack and Recept
- Telephone Connection with one Phone Jack
- TV Antenna with Power Booster & two Jacks

### CABINETS & FURNITURE

- Flexsteel® Glider Recliner (one or two as shown on floor plan drawing)
- Corian® Countertop in Kitchen with Recessed Acrylic Sink
- Drawers with Metal Guides
- Oak Hardwood Cabinets with Raised Panel Double Arched Doors

### ELECTRICAL FEATURES

- 2 - 45-Amp Converters
- 2 - 6-Volt Batteries
- Battery Disconnect Switch
- 50-Amp Electrical Service with Flexible Cord
- Exterior Security Lights (one installed on each side)
- Interior Courtesy Lights
- Lights in Exterior Storage Areas, Controlled by an Interior Master Switch
- Lights in Wardrobes with Automatic Switches

### EXTERIOR FEATURES

- BriteTek Roof with 7MM Decking and Radius Fiberglass Top Wrap
- Gel-Coated Fiberglass End Caps
- Gel-Coated Fiberglass Exterior Sides
- One Piece Molded Fiberglass Front Goose Neck Area
- Power Front Jacks, Rated at 8000 lbs. with Independent Operation
- Roof Rack & Ladder
- Snaps for Fifth Wheel Jacks
- Stabilizer Jacks (two pairs)
- Storage Drawer in Front Compartment Area

### INTERIOR FEATURES

- 15" Floor Tile in Kitchen and Foyer Area
- Decorative Ceramic Tile Back Splash in Kitchen and Bath
- Padded Vinyl Ceiling
- Quilted Bedspread with Pillow Shams, Matching Bed Skirt & Accent Pillows

### PLUMBING/BATH FEATURES

- China Stool with Spray Attachment
- Fiberglass Tub/Shower with Glass Shower Door
- Gate Valve Drain on Fresh Water Tank
- Monitor Panel
- Sewage Holding Tank Rinse
- Water Heater Bypass System

### CONSTRUCTION FEATURES

- 16" I-Beam Frame with Molded Fiberglass Wrap Storage Doors
- Aluminum Frame Sidewalls & Roof Construction, 16" On Center
- Slide Out Tray in Rear Bumper with Spare Tire

### WINDOWS, AWNINGS & VENTS

- Fan-tastic Vent with Rain Sensor in Kitchen
- Power Vent in Bath Area with Wall Switch
- A&E 9000 Side Awning
- Lighted Acrylic Assist Handle at Entrance Door
- Skylight in Bathroom with Soft Shade (located above tub/shower)
- Stainless Steel Wheel Simulators
- Tinted Safety Glass Windows

### TOWABLE CHASSIS FEATURES

- Tandem Axle Dual Wheels with MOR/ryde® Independent Suspension

## OPTIONAL FEATURES

### APPLIANCES & ACCESSORIES

- Dometic® 1292 Side By Side Refrigerator (12 cu. ft.) [47 lbs.]
- Icemaker added to Dometic® Refrigerator [5 lbs.]
- Sears Washer/Dryer [232 lbs.]

### CABINETS & FURNITURE

- Cherry Hardwood Cabinets [0 lbs.]
- Frosted Maple Hardwood Cabinets [0 lbs.]

### ELECTRICAL FEATURES

- 30" Convection Microwave with 3 Burner Cooktop [13 lbs.]

### EXTERIOR FEATURES

- Gel-coated Fiberglass Roof with 1/4" Foam Insulation [78 lbs.]

### INTERIOR FEATURES

- Ceramic Floor Tile in Bath Area [75 lbs.]
- Ceramic Floor Tile in Kitchen and Foyer Area [35 lbs.]

### WINDOWS/AWNINGS & VENTS

- Double Pane Tinted Safety Glass Windows [110 lbs.]
- Power Slideout Landing with Railing & Power Step [130 lbs.]

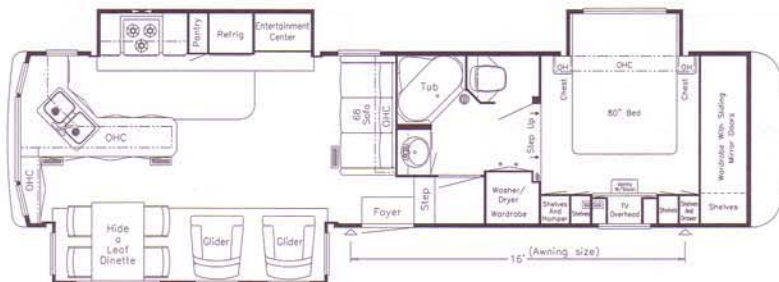
[ ] - INDICATES THE NET DIFFERENCE IN WEIGHT WITH THIS OPTION



## SPECIFICATIONS

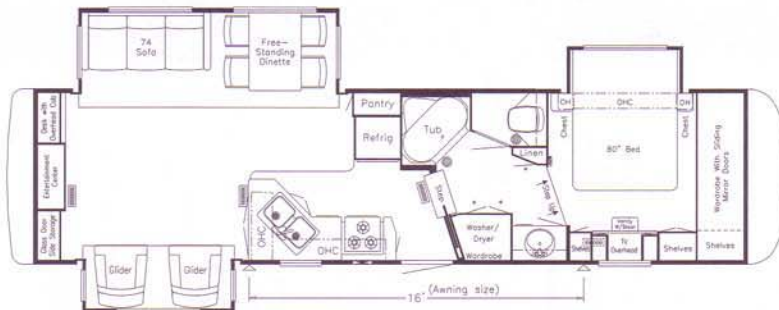
### MODEL 2001 KAFW 36LKSA

Tire Size: 215-85 R16 D  
GAWR: 8,600  
GVWR: 20,000  
Approx. Length: 37' 0"  
Approx. Height: 12' 4"  
Width: 101"  
Approx Dry Weight: 15,000  
Approx Hitch Weight: 2,750  
Fresh Water: 75  
Grey: 92  
Sewage Cap: 50  
Approx. Hitch Height: 47"  
Heat Cap: 42,000



### MODEL 2001 KAFW 36SKDS

Tire Size: 215-85 R16 D  
GAWR: 8,600  
GVWR: 20,000  
Approx. Length: 37' 4"  
Approx. Height: 12' 4"  
Width: 101"  
Approx Dry Weight: 15,284  
Approx Hitch Weight: 2,598  
Fresh Water: 75  
Grey: 82  
Sewage Cap: 50  
Approx. Hitch Height: 47"  
Heat Cap: 42,000



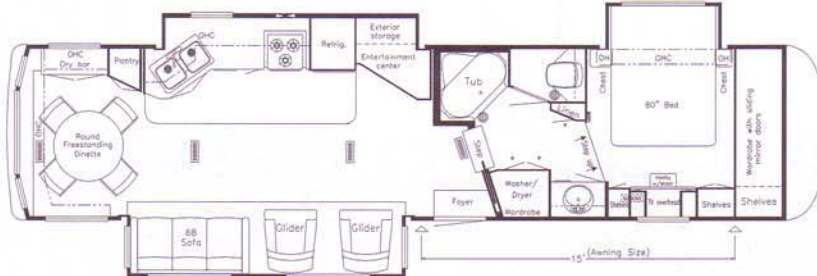
### MODEL 2001 KAFW 38KSWB

Tire Size: 215-85 R16 D  
GAWR: 8,600  
GVWR: 20,000  
Approx. Length: 39' 2"  
Approx. Height: 12' 4"  
Width: 101"  
Approx Dry Weight: 16,367  
Approx Hitch Weight: 2,946  
Fresh Water: 75  
Grey: 92  
Sewage Cap: 50  
Approx. Hitch Height: 47"  
Heat Cap: 55,000



### MODEL 2001 KAFW 38RDKS

Tire Size: 215-85 R16 D  
GAWR: 8,600  
GVWR: 20,000  
Approx. Length: 39' 2"  
Approx. Height: 12' 4"  
Width: 101"  
Approx Dry Weight: 16,374  
Approx Hitch Weight: 2,865  
Fresh Water: 75  
Grey: 82  
Sewage Cap: 50  
Approx. Hitch Height: 47"  
Heat Cap: 55,000



### MODEL 2001 KAFW 39BLSE

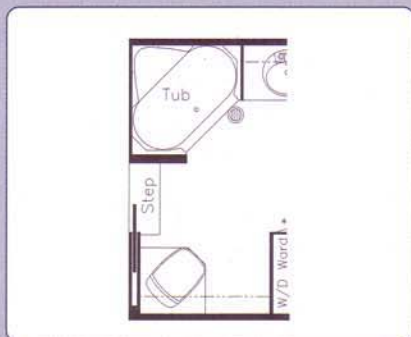
Tire Size: 215-85 R16 D  
GAWR: 8,600  
GVWR: 20,000  
Approx. Length: 40' 6"  
Approx. Height: 12' 4"  
Width: 101"  
Approx Dry Weight: 16,117  
Approx Hitch Weight: 2,579  
Fresh Water: 75  
Grey: 92  
Sewage Cap: 50  
Approx. Hitch Height: 47"  
Heat Cap: 55,000



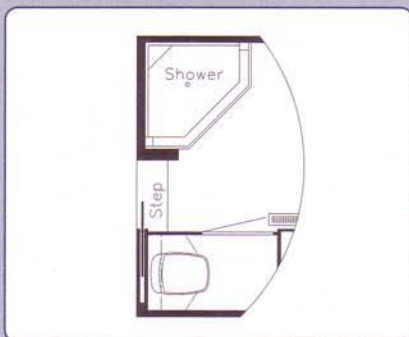


# THE KOUNTRY AIRE FIFTH WHEEL

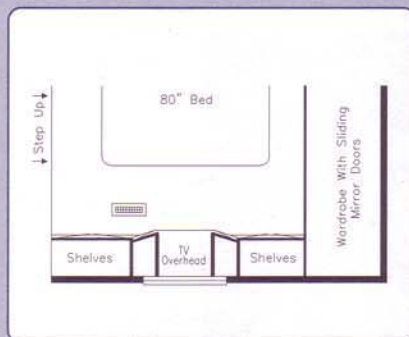
## FLOORPLAN OPTIONS



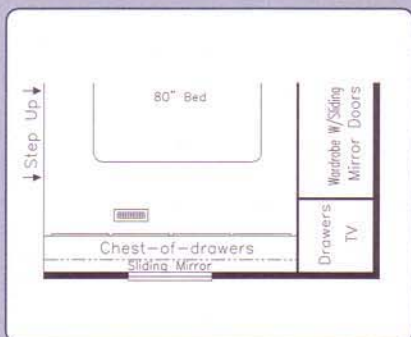
**P163**  
UNENCLOSED STOOL OPTION  
KAFW: 38KSWB, 39BLSE



**P094**  
CORNER SHOWER IN LIEU OF TUB  
KAFW: 38KSWB, 39BLSE



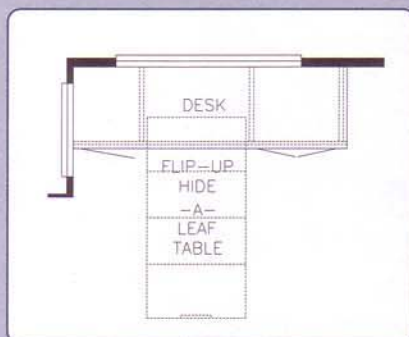
**M474**  
VANITY OVER DRESSER IN LIEU OF  
VANITY CENTER  
KAFW: 36LKSA, 38KSWB, 39BLSE



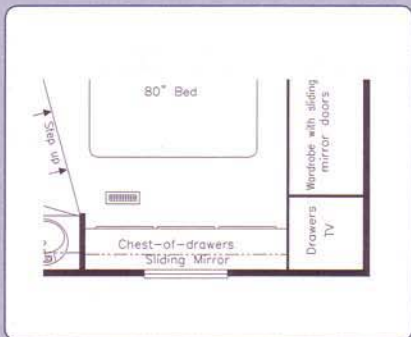
**M444**  
DRESSER CENTER IN LIEU OF VANITY  
CENTER  
KAFW: 36LKSA, 38KSWB, 39BLSE



**K563**  
COMPUTER CENTER IN LIEU OF VANITY  
CENTER  
KAFW: 36LKSA, 38KSWB, 39BLSE



**K122**  
COMBINATION DESK/DINETTE TABLE IN LIEU OF  
STANDARD (DOORSIDE SHOWN)  
KAFW: 36LKSA, 36SKDS, 38KSWB, 39BLSE



**M427**  
DRESSER CENTER IN LIEU OF VANITY  
CENTER  
KAFW: 36SKDS, 38RDKS



**M477**  
VANITY OVER DRESSER CENTER IN LIEU  
OF VANITY CENTER  
KAFW: 36SKDS, 38RDKS

\*LENGTHS, HEIGHTS, WIDTHS AND DRY WEIGHTS ARE APPROXIMATE. WEIGHT WILL VARY BASED ON OPTIONAL EQUIPMENT ADDED TO THE ABOVE BASE WEIGHT.

DON'T FORGET TO CHECK OUT THE NEWMAR KOUNTRY CLUB. ALL YOU NEED FOR ELIGIBILITY IS TO BE A PROUD OWNER OF ANY OF THE FINE NEWMAR RECREATIONAL VEHICLES.

WE INVITE YOU TO VISIT OUR STATE-OF-THE-ART PRODUCTION FACILITY IN NAPPANEE, INDIANA. PLANT TOURS ARE OFFERED AT 10:00 A.M. AND 1:00 P.M., MONDAY THROUGH FRIDAY.



NEWMAR QUALITY: A WAY OF LIFE

355 N. DELAWARE STREET  
NAPPANEE, INDIANA 46550  
PH: 219.773.7791 • WWW.NEWMARCORP.COM

PRICES, SPECIFICATIONS AND FLOORPLANS ARE SUBJECT TO CHANGE AT NEWMAR'S DISCRETION WITHOUT PRIOR WRITTEN NOTICE OR OBLIGATION. PLEASE SEE YOUR DEALER FOR ACTUAL SAMPLES AND SPECIFICATIONS. ©2000 NEWMAR CORPORATION. PRINTED IN THE U.S.A. (6/00)