

2 0 0 1 K O U N T R Y S T A R



F I F T H W H E E L

N E W M A R C O R P O R A T I O N



"HITCH YOUR WAGON TO A STAR."

RALPH WALDO EMERSON

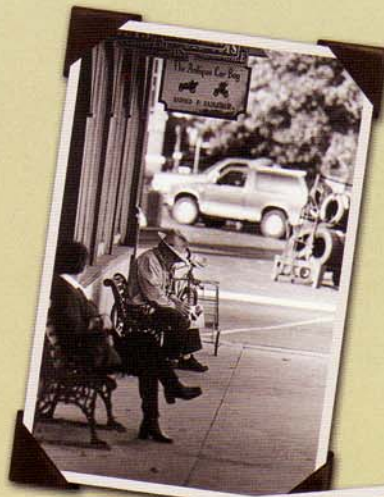
WONDER.

In Nappanee, Indiana, where we build the Kountry Star Fifth Wheel, every new day is a wonder. We come to work determined to do our best because that is our way. We insist that you be surprised and delighted. The Kountry Star surrounds you with quality, beauty and inspiration.

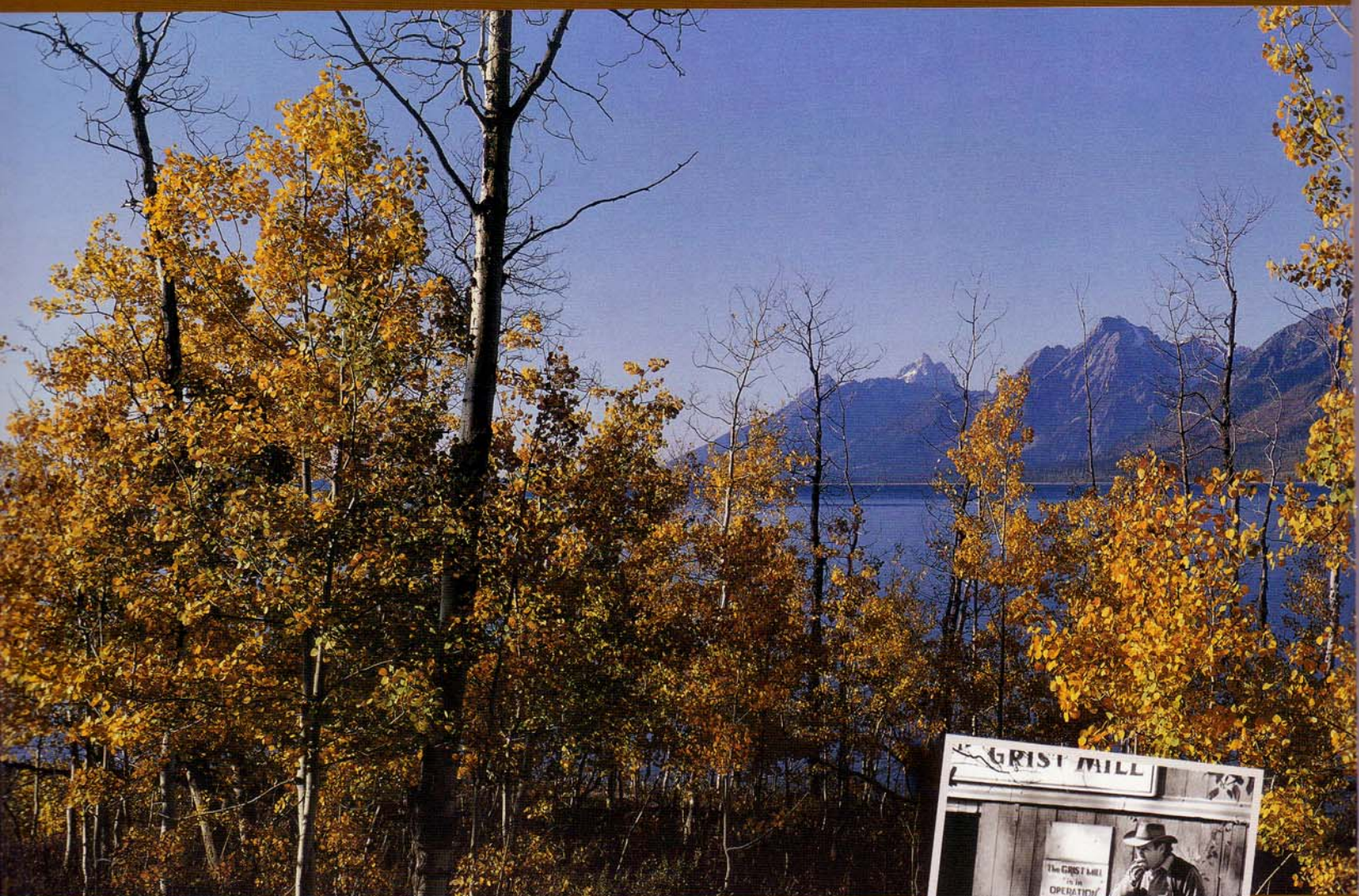
There's a big universe out there. Expand your horizons. In Kountry Star, you'll find more than your share of awe-inspiring sunrises and starry nights. More than your share of wonder.

Of course Kountry Star, which is available in 30-, 33-, 34-, 35- and 36-foot lengths, has the level of features and amenities you'd expect from Newmar. Insulation with higher than industry standard R-factors. True central air conditioning. An optional bedroom slideout. But amenities are just part of the story. Our dedication to a life of simple quality shines through. We add a little wonder into every Kountry Star we build.

NEWMAR QUALITY: A WAY OF LIFE.



THE KOUNTRY STAR FIFTH WHEEL



OUR OBLIGATION TO YOU. ONLY THE

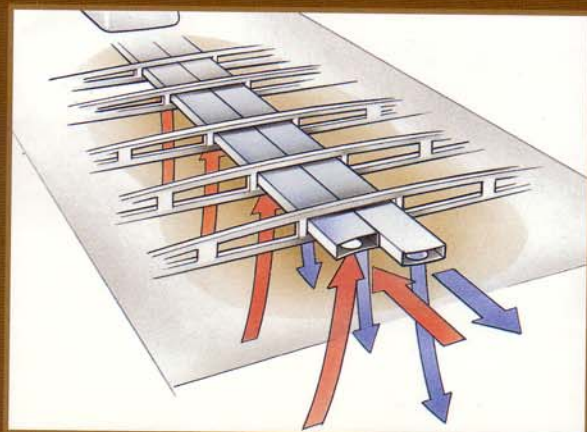


AMPLE BASEMENT STORAGE PROVIDES
PLENTY OF CARGO CAPACITY.

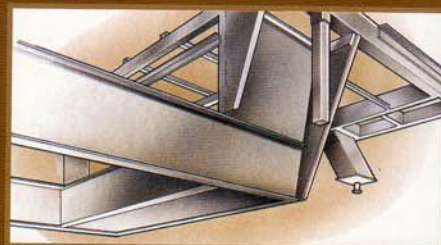
When we build the Kountry Star, we are thinking about you and your family. About how you live. Kountry Star is great for weekends, holidays, overnights, vacations and even those rare Fridays when your workload allows you to slip out a little early and head for the hills. The Kountry Star offers value and amenities you wouldn't expect. It's built for practicality and built to last. We hold deeply that our obligation is to provide you the very best fifth wheel your money can buy. Your satisfaction is our most precious product, regardless of when you're leaving, or how long you plan to stay.



BEST.



BECAUSE NEWMAR FRAMES ITS UNITS LIKE THE FRAMING IN YOUR HOME, WE CAN PROVIDE TRUE CENTRAL AIR CONDITIONING. VENTS DELIVER COOL AIR AND RETURN WARM AIR, ALLOWING YOU TO CLOSE THE DOOR TO A ROOM AND STILL ENJOY TOTAL COMFORT.



EVER NOTICE THAT I-BEAMS ARE USED WHEN CONSTRUCTING SKYSCRAPERS? THE I-BEAM IS STRONGER THAN A BOX-CHANNEL BEAM. THAT'S WHY NEWMAR USES A 12-INCH I-BEAM WHEN CONSTRUCTING ITS FIFTH-WHEEL FRAME.

THE KOUNTRY STAR FIFTH WHEEL



YOU'VE BEEN HERE BEFORE. WELCOME



THE KOUNTRY STAR FIFTH WHEEL'S KITCHEN FEATURES A 0.8 CUBIC FOOT MICROWAVE, A REFRIGERATOR WITH MATCHING DOOR PANELS AND 8 CUBIC FEET OF STORAGE, GEMSTONE COUNTERTOPS AND THREE-BURNER GAS STOVE WITH COVER.

While this is the first time you've ever stayed in this campground, your surroundings are familiar and comfortable. You belong here. We have created an environment for you as inviting as our own home in Nappanee, Indiana. Interior appointments are tasteful and abundant. True central air conditioning, standard on Kountry Star, is something you expect in models costing much more. In fact, everything about Kountry Star speaks of our commitment to quality and comfort. It's the only way we know how to do things. Wherever you go, you'll be at home in Kountry Star.

MODELS SHOWN ARE KSFW 34BLDS, 30RKCL.



THIS SPACIOUS LIVING AREA FEATURES A SOFA, TWO OPTIONAL GLIDER RECLINERS AND A COMPUTER DESK, SHOWN IN BLUE STREAM AND OPTIONAL SNOW MAPLE.

HOME.



OAK CABINETRY AND BUILT-IN NIGHTSTANDS SURROUND THE COMFORTABLE QUEEN-SIZE BED.



SOFA/DINETTE IN A NEWMAR-ASSEMBLED FLAT-FLOOR POWER SLIDEOUT, SHOWN IN TERRA/OAK.

AN L-SHAPED KITCHEN FEATURES THE OPTIONAL SNOW MAPLE CABINETS.



"WE MASS PRODUCE IN VOLUMES OF ONE."

"It is my deepest belief that we need to treat others as we treat ourselves, that I should treat our customers in the same manner as I would want to be treated. I believe these values helped make our company what it is today. They affect everything we do."



QUALITY DESIGN "We don't take short cuts, we construct. No matter what Newmar model our customers bought, they were assembled on the same production line, built with the same high standards and care."

TESTING "We test everything. All of our motorhomes, for instance, are tested for leaks, for alignment and for weight before they leave the assembly line. We want to be sure our products work the way our customers expect them to work."

INNOVATIONS "We innovate for the long-term quality of our customer's life. For example, there's our flat-floor power slide out, which gives our customers as much living space as possible. We offer practical features that will make your life in a Newmar RV easier."

INDIVIDUAL RESPONSIBILITY "If one of our quality-control inspectors finds a problem in the plumbing, they pull a worker from the plumbing team to fix it. We believe it's the team's responsibility, no one else's. Our workers feel a personal obligation to make a customer's RV the best possible."

NEWMAR QUALITY "When it's all said and done, this translates to Newmar Quality. Customers must be able to enjoy their Newmar RV for years to come. There is no other way for us."

When we say 'Newmar Quality: A Way of Life,' we truly live it."

Virgil Miller, President, Newmar Corp.



NEWMAR QUALITY: A WAY OF LIFE

355 N. DELAWARE STREET
NAPPANEE, INDIANA 46550
PH: 219.773.7791 • WWW.NEWMARCORP.COM

WE INVITE YOU TO VISIT OUR STATE-OF-THE-ART PRODUCTION FACILITY
IN NAPPANEE, INDIANA. PLANT TOURS ARE OFFERED
AT 10:00 A.M. AND 1:00 P.M., MONDAY THROUGH FRIDAY.

DON'T FORGET TO CHECK OUT THE NEWMAR COUNTRY KLUB.
ALL YOU NEED FOR ELIGIBILITY IS TO BE A PROUD OWNER OF ANY
OF THE FINE NEWMAR RECREATIONAL VEHICLES.

FOR A COMPLETE PHOTO GALLERY OF ALL NEWMAR PRODUCTS, VISIT
OUR WEBSITE: WWW.NEWMARCORP.COM

SOME FEATURES SHOWN IN OUR LITERATURE ARE OPTIONAL. COLORS AND FINISHES
ARE PHOTOGRAPHIC REPRESENTATIONS AND MAY APPEAR DIFFERENTLY WHEN VIEWING
ACTUAL MATERIALS. PRICES, SPECIFICATIONS AND FLOORPLANS ARE SUBJECT TO
CHANGE AT NEWMAR'S DISCRETION WITHOUT PRIOR WRITTEN NOTICE OR OBLIGATION.
PLEASE SEE YOUR DEALER FOR ACTUAL SAMPLES AND SPECIFICATIONS.

2 0 0 1 K O U N T R Y S T A R



F I F T H W H E E L
S P E C I F I C A T I O N S



N E W M A R C O R P O R A T I O N

STANDARD FEATURES

AIR CONDITIONING & HEATING

- 13,500 BTU Brisk® Central Air Conditioner
- 2 - 30# LP Gas Bottles with Automatic Regulator
- LP Leak Detector

APPLIANCES & ACCESSORIES

- 6 Gallon Gas/Electric Water Heater - Direct Spark Ignition
- 22" Microwave
- Color TV in Entertainment Center
- 3-Burner Range with Oven (piezzo ignition)
- AM/FM Stereo with Cassette
- Bifold Range Cover
- Cable TV Connection with RG6 Coax
- Dometic® 2852 Refrigerator (8 cu. ft.)
- Hardwood Raised Panel Refrigerator Front
- Range Hood with Light & Fan
- Telephone Connection with one Phone Jack
- TV Antenna with Power Booster & two Jacks

CABINETS & FURNITURE

- One Flexsteel® Petite Recliner (where shown on floor plan drawing)
- Dinette Table with Hardwood Top and Four Chairs
- Gemstone Countertop in Kitchen with Color Coordinated Edge and Acrylic Sink
- Laminate Countertop with Color Coordinated Gemstone Edge and Porcelain Lavatory in Bath

ELECTRICAL FEATURES

- 55-Amp Converter with Charger
- 12-Volt Battery

EXTERIOR FEATURES

- Filon Fiberglass Exterior Sides
- Gel-Coated Fiberglass End Caps
- Power Front Jacks
- Stabilizer Jacks (one pair)

INTERIOR FEATURES

- Carpeting - Nylon with Scotchguard® Stain Release
- Day/Night Pleated Window Shades and Lined Drapes
- Decorative Wall Clock
- Quilted Bedspread with Pillow Sham & Accent Pillow

PLUMBING/BATH FEATURES

- Aqua Magic IV® Stool
- Monitor Panel
- Tub/Shower Surround with Shower Door
- Water Heater Bypass System

CONSTRUCTION FEATURES

- Aluminum Frame Sidewalls & Roof Construction, 16" On Center

WINDOWS, AWNINGS & VENTS

- Power Vent in Bath Area with Wall Switch

OPTIONAL FEATURES

AIR CONDITIONING & HEATING

- 15,000 BTU Brisk® Air Conditioner in lieu of Standard [5 lbs.]

APPLIANCES & ACCESSORIES

- 10 Gallon Gas/Electric Water Heater - Direct Spark Ignition [10 lbs.]
- Add-On CD Player [5 lbs.]
- Ceiling Fan in Living Room Area [10 lbs.]
- Dometic® 3862 Refrigerator (8 cu. ft.) [5 lbs.]

CABINETS & FURNITURE

- Drawers with Metal Guides [5 lbs.]
- Snow Maple Cabinets [0 lbs.]
- Leathermate Recliner [5 lbs.]

ELECTRICAL FEATURES

- 50-Amp Electrical Service [9 lbs.]
- Exterior Security Lights (one installed on each side) [2 lbs.]

EXTERIOR FEATURES

- Roof Rack & Ladder [4 lbs.]

INTERIOR FEATURES

- Simulated Plank Floor in Kitchen Area [37 lbs.]
- Lambrequin Window Treatment [20 lbs.]

PLUMBING/BATH FEATURES

- China Stool with Spray Attachment [31 lbs.]
- Fiberglass Tub/Shower [75 lbs.]
- Sewage Holding Tank Rinse [1 lb.]

WINDOWS/AWNINGS & VENTS

- Fan-tastic Vent with Rain Sensor in Kitchen [11 lbs.]
- Carefree Fiesta® Side Awning [104 lbs.]
- Double Pane Tinted Safety Glass Windows [110 lbs.]
- Skylight in Bathroom (located above tub/shower) [2 lbs.]

TOWABLE CHASSIS FEATURES

- Spare Tire [95 lbs.]

[] - INDICATES THE NET DIFFERENCE IN WEIGHT WITH THIS OPTION

SPECIFICATIONS

MODEL 2001 KSF 26KSRB

Tire Size: 225-75 R15 D
GAWR: 5,080
GVWR: 11,900
Approx. Length: 27' 4"
Approx. Height: 12' 0"
Width: 100"
Approx Dry Weight: 9,220
Approx Hitch Weight: 1,400
Fresh Water: 42
Grey: 42
Sewage Cap: 42
Approx. Hitch Height: 46"
Heat Cap: 35,000



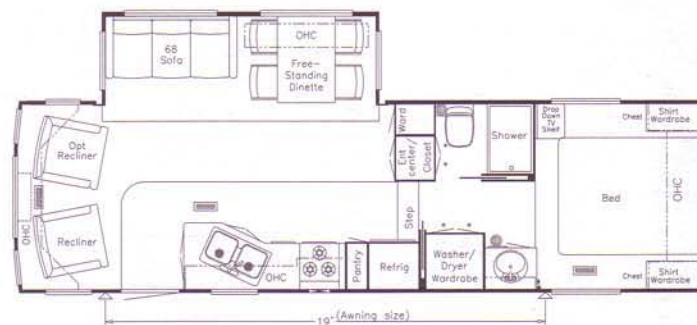
MODEL 2001 KSF 30KCL

Tire Size: 225-75 R15 D
GAWR: 5,080
GVWR: 11,900
Approx. Length: 30' 10"
Approx. Height: 12' 0"
Width: 100"
Approx Dry Weight: 9,591
Approx Hitch Weight: 1,822
Fresh Water: 42
Grey: 42
Sewage Cap: 42
Approx. Hitch Height: 46"
Heat Cap: 35,000



MODEL 2001 KSF 30WBRL

Tire Size: 225-75 R15 D
GAWR: 5,080
GVWR: 11,900
Approx. Length: 30' 4"
Approx. Height: 12' 0"
Width: 100"
Approx Dry Weight: 9,464
Approx Hitch Weight: 1,609
Fresh Water: 42
Grey: 42
Sewage Cap: 42
Approx. Hitch Height: 46"
Heat Cap: 35,000



MODEL 2001 KSF 32BKWB

Tire Size: 225-75R 15 D
GAWR: 5,080
GVWR: 11,900
Approx. Length: 32' 4"
Approx. Height: 12' 0"
Width: 100"
Approx Dry Weight: 9,674
Approx Hitch Weight: 1,645
Fresh Water: 42
Grey: 42
Sewage Cap: 42
Approx. Hitch Height: 46"
Heat Cap: 35,000



MODEL 2001 KSF 32RKSA

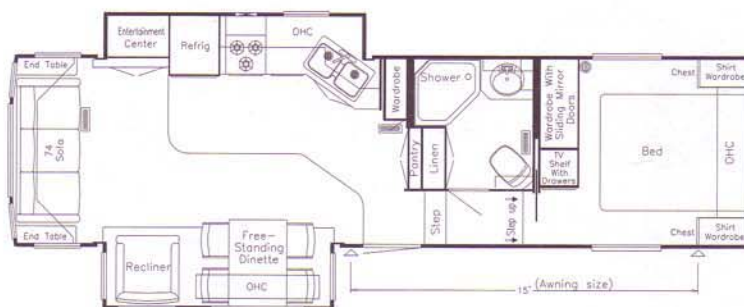
Tire Size: 225-75 R15 D
GAWR: 5,080
GVWR: 11,900
Approx. Length: 32' 4"
Approx. Height: 12' 0"
Width: 100"
Approx Dry Weight: 9,880
Approx Hitch Weight: 1,877
Fresh Water: 42
Grey: 42
Sewage Cap: 42
Approx. Hitch Height: 46"
Heat Cap: 35,000



SPECIFICATIONS

MODEL 2001 KSF 32RLKS

Tire Size: 235-85 R16 E
GAWR: 6,000
GVWR: 14,000
Approx. Length: 32' 8"
Approx. Height: 12' 1"
Width: 100"
Approx Dry Weight: 10,835
Approx Hitch Weight: 2,167
Fresh Water: 42
Grey: 42
Sewage Cap: 42
Approx. Hitch Height: 47"
Heat Cap: 35,000



MODEL 2001 KSF 32RLSB

Tire Size: 225-75 R15 D
GAWR: 5,080
GVWR: 11,900
Approx. Length: 32' 2"
Approx. Height: 12' 0"
Width: 100"
Approx Dry Weight: 9,996
Approx Hitch Weight: 1,699
Fresh Water: 42
Grey: 42
Sewage Cap: 42
Approx. Hitch Height: 46"
Heat Cap: 35,000



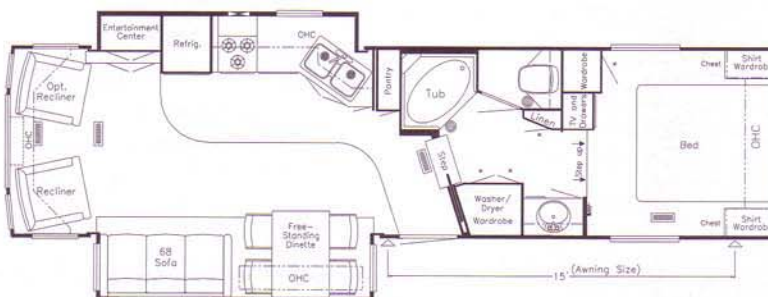
MODEL 2001 KSF 33DBWB

Tire Size: 225-75 R15 D
GAWR: 5,080
GVWR: 11,900
Approx. Length: 34' 3"
Approx. Height: 12' 0"
Width: 100"
Approx Dry Weight: 10,078
Approx Hitch Weight: 1,713
Fresh Water: 42
Grey: 42
Sewage Cap: 42
Approx. Hitch Height: 46"
Heat Cap: 35,000



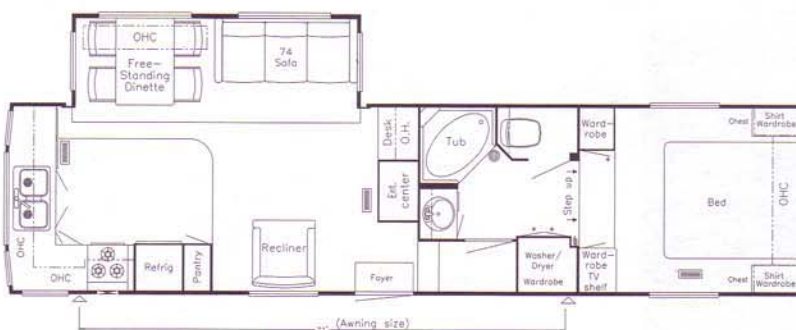
MODEL 2001 KSF 33KSFB

Tire Size: 235-85 R16 E
GAWR: 6,000
GVWR: 14,000
Approx. Length: 34' 0"
Approx. Height: 12' 1"
Width: 100"
Approx Dry Weight: 11,250
Approx Hitch Weight: 2,025
Fresh Water: 42
Grey: 42
Sewage Cap: 42
Approx. Hitch Height: 47"
Heat Cap: 35,000



MODEL 2001 KSF 34BKSB

Tire Size: 235-85 R16 E
GAWR: 6,000
GVWR: 14,000
Approx. Length: 35' 3"
Approx. Height: 12' 1"
Width: 100"
Approx Dry Weight: 10,843
Approx Hitch Weight: 1,735
Fresh Water: 42
Grey: 42
Sewage Cap: 42
Approx. Hitch Height: 47"
Heat Cap: 35,000



SPECIFICATIONS

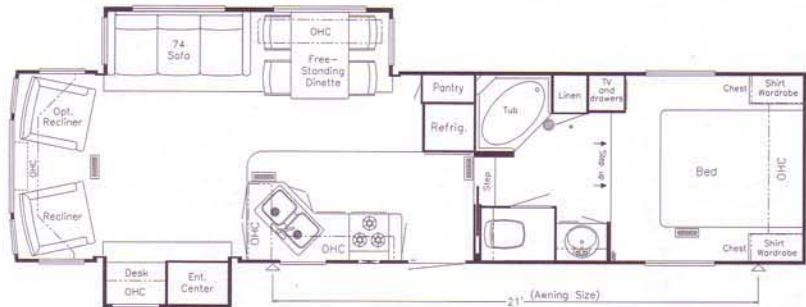
MODEL 2001 KSF 34BKWB

Tire Size: 235-85 R16 E
GAWR: 6,000
GVWR: 14,000
Approx. Length: 34' 11"
Approx. Height: 12' 1"
Width: 100"
Approx Dry Weight: 10,600
Approx Hitch Weight: 2,120
Fresh Water: 42
Grey: 42
Sewage Cap: 42
Approx. Hitch Height: 47"
Heat Cap: 35,000



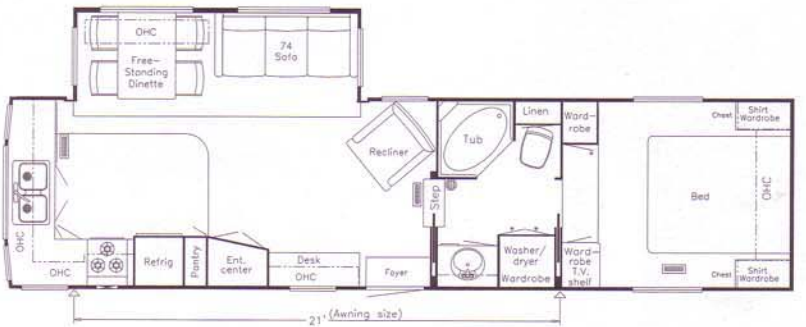
MODEL 2001 KSF 34BLDS

Tire Size: 235-85 R16 E
GAWR: 6,000
GVWR: 14,000
Approx. Length: 34' 10"
Approx. Height: 12' 1"
Width: 100"
Approx Dry Weight: 11,057
Approx Hitch Weight: 2,211
Fresh Water: 42
Grey: 42
Sewage Cap: 42
Approx. Hitch Height: 47"
Heat Cap: 35,000



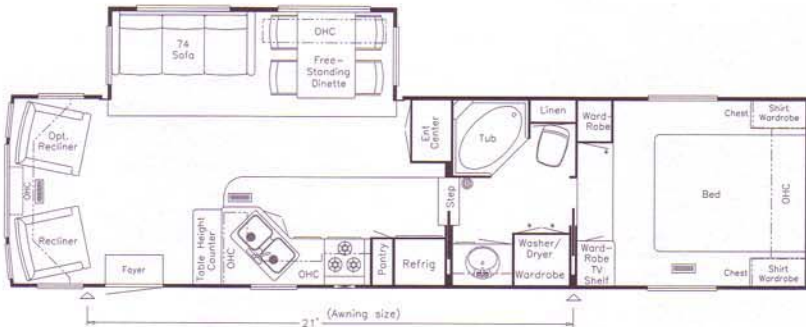
MODEL 2001 KSF 34RKWD

Tire Size: 235-85 R16 E
GAWR: 6,000
GVWR: 14,000
Approx. Length: 34' 7"
Approx. Height: 12' 1"
Width: 100"
Approx Dry Weight: 10,519
Approx Hitch Weight: 2,209
Fresh Water: 42
Grey: 42
Sewage Cap: 42
Approx. Hitch Height: 47"
Heat Cap: 35,000



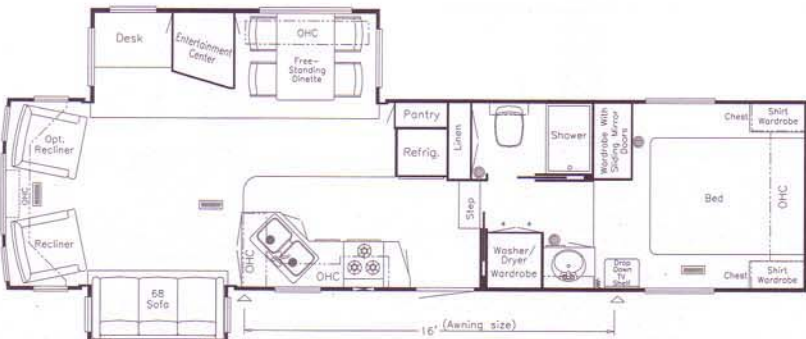
MODEL 2001 KSF 34RLCK

Tire Size: 235-85 R16 E
GAWR: 6,000
GVWR: 14,000
Approx. Length: 35' 2"
Approx. Height: 12' 1"
Width: 100"
Approx Dry Weight: 10,665
Approx Hitch Weight: 2,026
Fresh Water: 42
Grey: 42
Sewage Cap: 42
Approx. Hitch Height: 47"
Heat Cap: 35,000



MODEL 2001 KSF 34RLWB

Tire Size: 235-85 R16 E
GAWR: 6,000
GVWR: 14,000
Approx. Length: 35' 4"
Approx. Height: 12' 1"
Width: 100"
Approx Dry Weight: 10,748
Approx Hitch Weight: 2,042
Fresh Water: 42
Grey: 42
Sewage Cap: 42
Approx. Hitch Height: 47"
Heat Cap: 35,000



SPECIFICATIONS

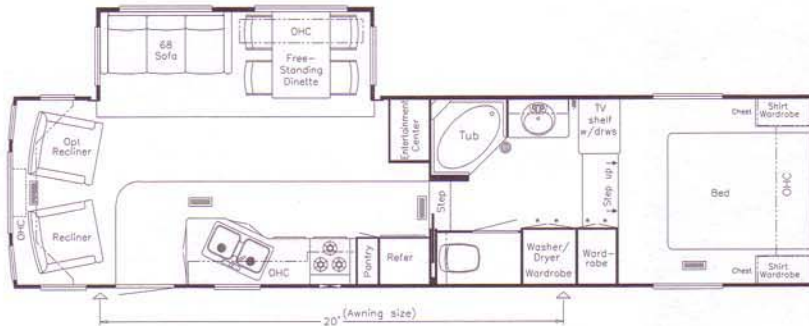
MODEL 2001 KSF 35LKSA

Tire Size: 235-85 R16 E
 GAWR: 6,000
 GVWR: 14,000
 Approx. Length: 35' 4"
 Approx. Height: 12' 1"
 Width: 100"
 Approx Dry Weight: 11,171
 Approx Hitch Weight: 1,787
 Fresh Water: 42
 Grey: 42
 Sewage Cap: 42
 Approx. Hitch Height: 47"
 Heat Cap: 35,000



MODEL 2001 KSF 35RLWB

Tire Size: 235-85 R16 E
 GAWR: 6,000
 GVWR: 14,000
 Approx. Length: 35' 3"
 Approx. Height: 12' 1"
 Width: 100"
 Approx Dry Weight: 10,943
 Approx Hitch Weight: 2,035
 Fresh Water: 42
 Grey: 42
 Sewage Cap: 42
 Approx. Hitch Height: 47"
 Heat Cap: 35,000



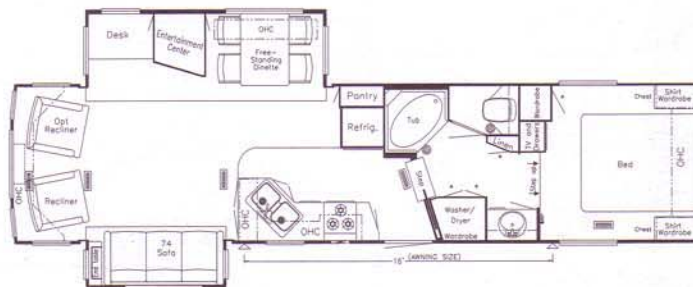
MODEL 2001 KSF 36DBSA

Tire Size: 235-85 R16 E
 GAWR: 6,000
 GVWR: 14,000
 Approx. Length: 36' 4"
 Approx. Height: 12' 1"
 Width: 100"
 Approx Dry Weight: 11,006
 Approx Hitch Weight: 1,761
 Fresh Water: 42
 Grey: 42
 Sewage Cap: 42
 Approx. Hitch Height: 47"
 Heat Cap: 35,000



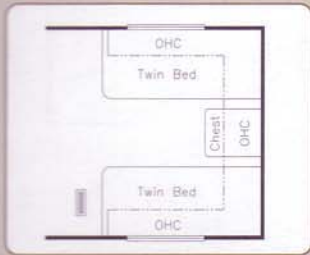
MODEL 2001 KSF 36RLFB

Tire Size: 235-85 R16 G
 GAWR: 7,000
 GVWR: 16,250
 Approx. Length: 36' 5"
 Approx. Height: 12' 3"
 Width: 100"
 Approx Dry Weight: 12,294
 Approx Hitch Weight: 2,336
 Fresh Water: 42
 Grey: 42
 Sewage Cap: 42
 Approx. Hitch Height: 47"
 Heat Cap: 42,000



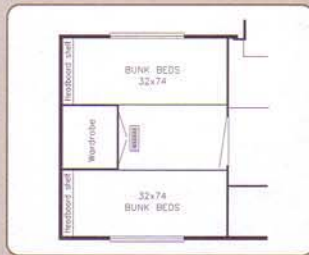
* LENGTHS, HEIGHTS, WIDTHS AND DRY WEIGHTS ARE APPROXIMATE. WEIGHT WILL VARY BASED ON OPTIONAL EQUIPMENT ADDED TO THE ABOVE BASE WEIGHT.

FLOORPLAN OPTIONS



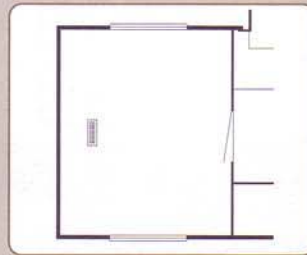
K080
TWIN BED OPTION

KSFW: 30WBRL, 32BKWB, 32RKSA, 32RLSB, 33DBWB, 34BKSB, 34BKWB, 34RKWD, 34RLCK, 34RLWB, 35LKSA, 35RLWB



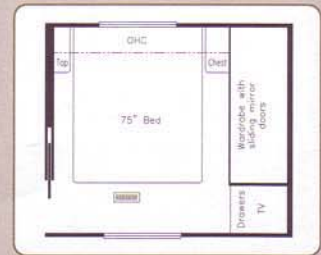
K130
BUNK HOUSE BEDROOM

KSFW: 33DBWB, 36DBSA



K550
**DELETE COMPLETE REAR
BEDROOM & BATH**

KSFW: 33DBWB, 36DBSA



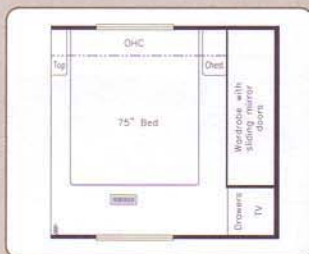
K920
HONEYMOON SUITE

KSFW: 34BKSB, 34RKWD, 34RLCK, 35LKSA



K921
HONEYMOON SUITE

KSFW: 30RKCL, 32RLKS, 36DBSA



K923
HONEYMOON SUITE

KSFW: 32BKWB, 32RLSB, 33DBWB, 34RLWB



K924
HONEYMOON SUITE

KSFW: 26KSRB



K926
HONEYMOON SUITE

KSFW: 34BKWB, 35RLWB



K943
WARDROBE IN LIEU OF DESK

KSFW: 32RKSA, 34BKSB



M300
**CABOVER SLIDEOUT W/DRESSER
CENTER**

KSFW: 34RLWB



M302
**CABOVER SLIDEOUT W/VANITY
CENTER**

KSFW: 33KSF8, 36RLF8



M303
**CABOVER SLIDEOUT W/VANITY
CENTER**

KSFW: 34BKWB, 35RLWB



M304
**CABOVER SLIDEOUT W/VANITY
CENTER**

KSFW: 34RLWB



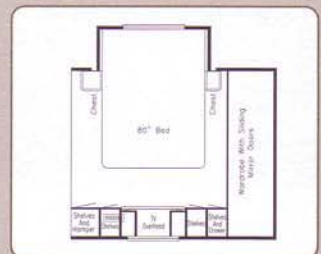
M305
**CABOVER SLIDEOUT W/VANITY
OVER DRESSER CENTER**

KSFW: 34RLWB



M711
**CABOVER SLIDEOUT W/DRESSER
CENTER**

KSFW: 34BKSB, 34RKWD, 34RLCK, 35LKSA



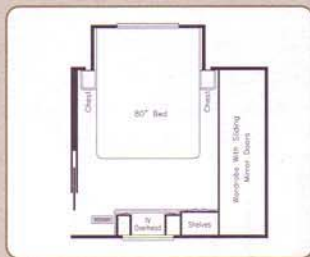
M712
**CABOVER SLIDEOUT W/VANITY
CENTER**

KSFW: 34BKSB, 34RKWD, 34RLCK, 35LKSA

THE KOUNTRY STAR FIFTH WHEEL



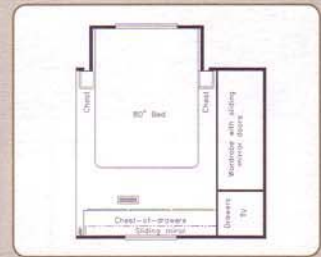
M713
CABOVER SLIDEOUT w/VANITY
OVER DRESSER CENTER
KSFw: 34BKSB, 34RKWD,
34RLCK, 35LKSA



M714
CABOVER SLIDEOUT w/VANITY
OVER DRESSER CENTER
KSFw: 36DBSA



M716
CABOVER SLIDEOUT w/VANITY
OVER DRESSER CENTER
KSFw: 32BKWB, 32RLSB,
33DBWB



M717
CABOVER SLIDEOUT w/DRESSER
CENTER
KSFw: 32BKWB, 32RLSB,
33DBWB



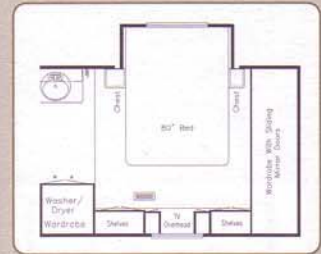
M718
CABOVER SLIDEOUT w/VANITY
OVER DRESSER CENTER
KSFw: 32BKWB, 32RLSB,
33DBWB



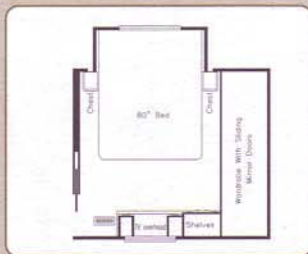
M721
CABOVER SLIDEOUT w/DRESSER
CENTER
KSFw: 33KSFB, 36RLFB



M722
CABOVER SLIDEOUT w/VANITY
OVER DRESSER CENTER
KSFw: 33KSFB, 36RLFB



M723
CABOVER SLIDEOUT w/VANITY
OVER DRESSER CENTER
KSFw: 34BKWB, 35RLWB



M725
CABOVER SLIDEOUT w/VANITY
OVER DRESSER CENTER
KSFw: 30RKCL, 32RLKS



M726
CABOVER SLIDEOUT w/VANITY
OVER DRESSER CENTER
KSFw: 26KSRB



M730
CABOVER SLIDEOUT w/DRESSER
CENTER
KSFw: 34BKWB, 35RLWB



M756
CABOVER SLIDEOUT w/VANITY
OVER DRESSER CENTER
KSFw: 34BLDS



M760
CABOVER SLIDEOUT w/DRESSER
CENTER
MAFW: 34BLDS



M761
CABOVER SLIDEOUT w/VANITY
OVER DRESSER CENTER
MAFW: 34BLDS



P182
ENCLOSED STOOL ROOM
w/STRAIGHT SHOWER
MAFW: 34RKWD, 34RLCK

DON'T FORGET TO CHECK OUT THE NEWMAR KOUNTRY KLUB. ALL YOU NEED FOR ELIGIBILITY IS TO BE A PROUD OWNER OF ANY OF THE FINE NEWMAR RECREATIONAL VEHICLES.

WE INVITE YOU TO VISIT OUR STATE-OF-THE-ART PRODUCTION FACILITY IN NAPPANEE, INDIANA. PLANT TOURS ARE OFFERED AT 10:00 A.M. AND 1:00 P.M., MONDAY THROUGH FRIDAY.



NEWMAR QUALITY: A WAY OF LIFE

355 N. DELAWARE STREET
NAPPANEE, INDIANA 46550
PH: 219.773.7791 • WWW.NEWMARCORP.COM

PRICES, SPECIFICATIONS AND FLOORPLANS ARE SUBJECT TO CHANGE AT NEWMAR'S DISCRETION WITHOUT PRIOR WRITTEN NOTICE OR OBLIGATION. PLEASE SEE YOUR DEALER FOR ACTUAL SAMPLES AND SPECIFICATIONS. ©2000 NEWMAR CORPORATION. PRINTED IN THE U.S.A. (6/00)