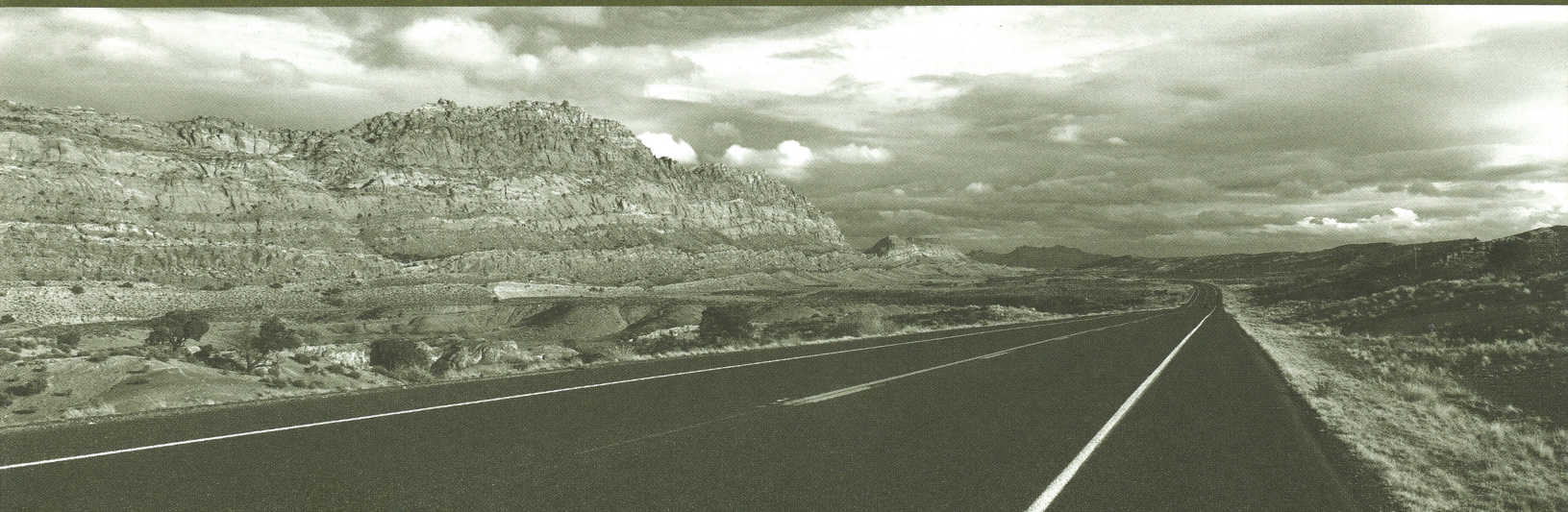


2 0 0 1 K O U N T R Y A I R E



D I E S E L P U S H E R
S P E C I F I C A T I O N S



N E W M A R C O R P O R A T I O N

STANDARD FEATURES

MOTORIZED CHASSIS FEATURES

- 400 HP Engine Enhancement Package
- Standard Chassis – Spartan Mountain Master
- Cruise Control
- Tilt & Telescope Steering Wheel (woodgrain and leather)
- Polished Aluminum Wheels

AIR CONDITIONING & HEATING

- 2 – 13,500 BTU Penguin® Heat Pump Central Air Conditioner
- Dash Heater/Air with Automatic Climate Control and Independent Settings for Driver and Passenger
- LP Leak Detector

APPLIANCES & ACCESSORIES

- 30" Convection Microwave
- 20" Color TV/VCR Combination with Radio and Clock in Bedroom
- Color TV (Mounted under dash overhead with power lift)
- 3-Burner Recessed Cooktop
- Air Horns
- AM/FM Radio in Dash with Combination Rear View Color Monitor System
- Bi-fold Corian® Range Cover
- Cable TV Connection with RG6 Coax
- CB Radio
- CD Player – Remote Eight-Disc Changer with Subwoofer (included w/ Dash Stereo)
- Dometic® 1292 Refrigerator (12 cu. ft.)
- TV Antenna with Power Booster & Two Jacks (Low Profile)
- Washer/Dryer Prep (for compact Washer/Dryer)

CABINETS & FURNITURE

- Flexsteel® Leather/Vinyl Front Seats with 8-way Power Lumbar Support and Power Footrest for Passenger

- Flexsteel® Leather/Vinyl Swivel/Rocker Recliner with Adjustable Headrest
- Corian® Countertop in Kitchen with integrated Sink Bowls
- Corian® Countertop on Bedroom Nightstands
- Dinette Table with Corian® Insert Top and Four Chairs
- Hidden Leaf Dinette Table with Two Fixed Chairs and Two Folding Chairs
- Oak Hardwood Cabinet with Raised Panel Double Arch Doors

ELECTRICAL FEATURES

- 4 – 6-Volt House Batteries On Pull Out Tray
- Battery Disconnect (for house battery)
- 7.5Kw Onan Diesel Quiet Series Generator
- 5-Watt Solar Panel to Charge Chassis Battery
- 50-Amp Electrical Service with Power Rewind for Cord
- Daytime Headlight System
- Driving Lights
- Exterior Security Lights (two installed on each side)
- Heart Freedom 20 Inverter/Charger
- Interior Courtesy Lights
- Lights In Wardrobes with Automatic Switches
- Recessed Docking Lights
- Roof Mounted Spot Light

EXTERIOR FEATURES

- Convex Exterior Chrome Mirrors with Remote Control and Defrost
- Gel-Coated Fiberglass End Caps
- Hitch for Towing Car (with two extra 14-gauge wires for customer use) (class-3, 5000# rating)
- Hydraulic Leveling Jacks with Automatic Control
- Rear Protective Tow Guard
- Seamless Gel-Coated Fiberglass Exterior Sides
- Seamless Molded Gel-Coated Fiberglass Roof and Top Wrap

INTERIOR FEATURES

- Carpeting – Fabrica Brand, 100% Nylon Cut File Frieze with Scotchguard® Soil and Stain Release
- Ceramic Floor Tile in Kitchen and Bath Area
- Padded Vinyl Ceiling with Mood and Direct Lighting in Recessed Hardwood Paneled Feature Area
- Quilted Bedspread Matching Pillow Shams & Accent Pillows

PLUMBING/BATH FEATURES

- Automatic Rewind Water Hose Reel
- China Stool with Spray Attachment
- Fiberglass Tub/Shower with Glass Shower Door
- Monitor Panel
- Sewage Holding Tank Rinse
- Water Filter with Drink Dispenser at Kitchen Sink
- Water Heater Bypass System

CONSTRUCTION FEATURES

- Aluminum Frame Sidewalls & Roof Construction, 16" On Center

WINDOWS, AWNINGS & VENTS

- Automatic Double Entrance Door Step
- Vent with Rain Sensor in Bath
- A&E 9000 Side Awning
- A&E 9000 Window Awnings (on Bedroom & Slideout Windows)
- A&E Living Area Slideout Cover
- Double Pane Tinted Safety Glass Windows (except driver/passenger area)
- Driver's Side Console with Power Window
- Front Entry Door with Powered Flush Stepwell Cover and Power Door Lock

OPTIONAL FEATURES

MOTORIZED CHASSIS FEATURES

- Electronic Road Relay (available on Spartan Chassis) [5 lbs.]

AIR CONDITIONING & HEATING

- Hydronic Zone Heating System (U-Line icemaker is not available with this option) [225 lbs.]

APPLIANCES & ACCESSORIES

- 100# Norcold Freezer AC/DC (on slides) [113 lbs.]
- Compact Washer/Dryer [185 lbs.]
- Winegard Automatic Satellite Dish (without receiver) [70 lbs.]

- Navigation System – (with seven-disc set) [8 lbs.]
- External Entertainment Center [132 lbs.]
- Surround Sound System [15 lbs.]
- KVH in Motion Satellite Dish (without receiver) [0 lbs.]

CABINETS & FURNITURE

- Frosted Maple Hardwood Cabinets [0 lbs.]
- Cherry Hardwood Cabinets [0 lbs.]
- Leather/Vinyl Sofa in lieu of Standard [10 lbs.]
- L-Lounge Leather/Vinyl Sofa with Incliner in lieu of Chair and Lamp Stand [80 lbs.]

- Push Back Leather/Vinyl Recliner with Ottoman in lieu of Standard [0 lbs.]
- Large Free Standing Leather/Vinyl Recliner in lieu of Standard [27 lbs.]

EXTERIOR FEATURES

- Front End Protective Shield [45 lbs.]

INTERIOR FEATURES

- Hardwood Lambrequin Window Treatment in Living Area [30 lbs.]

PLUMBING/BATH FEATURES

- Water Filter (for entire unit) [6 lbs.]

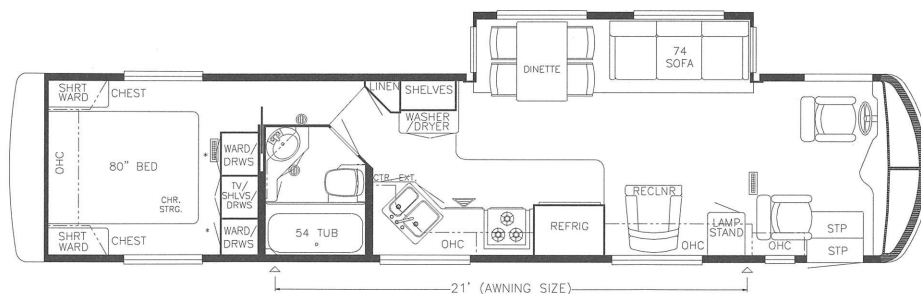
WINDOWS, AWNINGS & VENTS

- Keyless Entry Door [0 lbs.]

SPECIFICATIONS

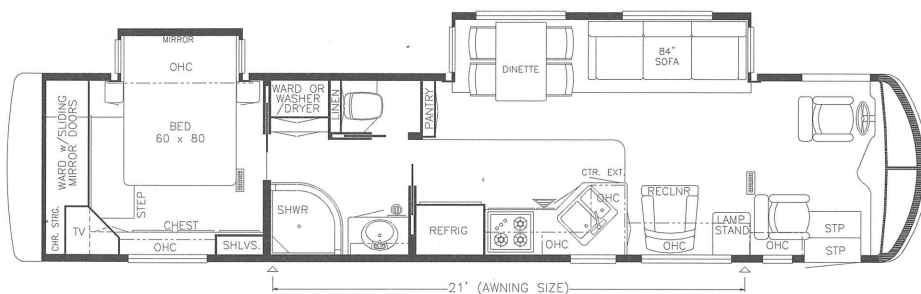
MODEL 2001 KADP 4062

Length (overall):	40' 8"
Width (overall):	101"
Height (overall):	12' 2"
Width (interior):	93"
Height (interior):	78"
Grey:	65
Sewage:	45
Water:	105
LP:	42
Furnace:	42,000
Water Heater:	10



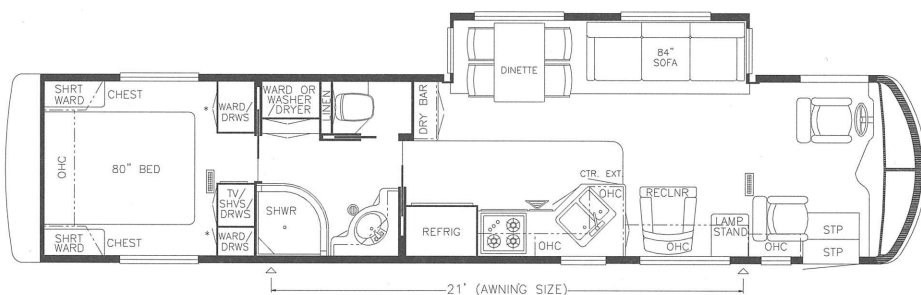
MODEL 2001 KADP 4084

Length (overall):	40' 8"
Width (overall):	101"
Height (overall):	12' 2"
Width (interior):	93"
Height (interior):	78"
Grey:	65
Sewage:	45
Water:	105
LP:	42
Furnace:	42,000
Water Heater:	10



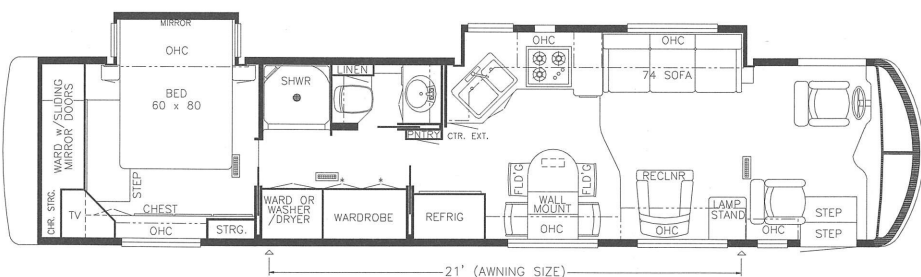
MODEL 2001 KADP 4085

Length (overall):	40' 8"
Width (overall):	101"
Height (overall):	12' 2"
Width (interior):	93"
Height (interior):	78"
Grey:	65
Sewage:	45
Water:	105
LP:	42
Furnace:	42,000
Water Heater:	10



MODEL 2001 KADP 4086

Length (overall):	40' 8"
Width (overall):	101"
Height (overall):	12' 2"
Width (interior):	93"
Height (interior):	78"
Grey:	65
Sewage:	45
Water:	105
LP:	42
Furnace:	42,000
Water Heater:	10



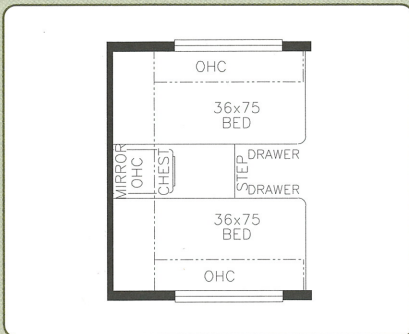
KOUNTRY AIRE DIESEL PUSHER SPARTAN CHASSIS

Model	Engine HP	Axle Ratio	Fuel Cap.	Wheel Base	Front GAWR	Rear GAWR	GVWR	GCWR	Approx. UWW	Approx. NCC
2001KADP4062	400	4.63	150	276	13,700	20,000	33,700	43,700	28,300	5,500
2001KADP4084	400	4.63	150	276	13,700	20,000	33,700	43,700	28,500	5,200
2001KADP4085	400	4.63	150	276	13,700	20,000	33,700	43,700	28,500	5,200
2001KADP4086	400	4.63	150	276	13,700	20,000	33,700	43,700	28,700	5,000

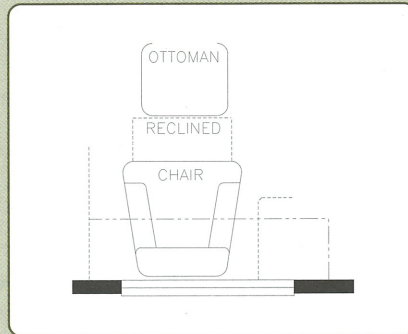
*LENGTHS, HEIGHTS, WIDTHS AND DRY WEIGHTS ARE APPROXIMATE. WEIGHT WILL VARY BASED ON OPTIONAL EQUIPMENT ADDED TO THE ABOVE BASE WEIGHT.

THE KOUNTRY AIRE DIESEL PUSHER

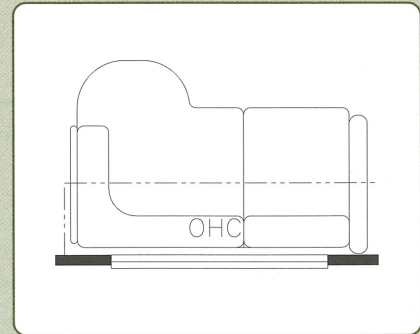
FLOORPLAN OPTIONS



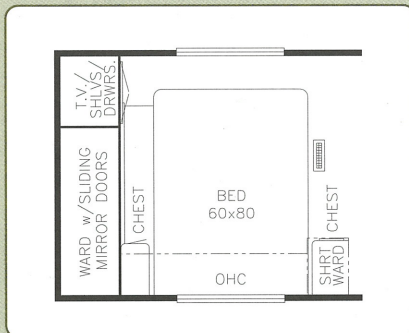
K104
75" TWIN BEDS
KADP: 4062



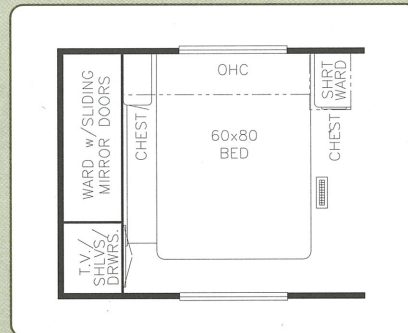
K850
CHAIR WITH OTTOMAN
IN LIEU OF STANDARD
KADP: 4062, 4084, 4085, 4086



K912
66" L-SOFA WITH INCLINER
KADP: 4084, 4085, 4086



K929
HONEYMOON SUITE
KADP: 4062



K957
HONEYMOON SUITE
KADP: 4085

DON'T FORGET TO CHECK OUT THE NEWMAR KOUNTRY KLUB. ALL YOU NEED FOR ELIGIBILITY IS TO BE A PROUD OWNER OF ANY OF THE FINE NEWMAR RECREATIONAL VEHICLES.

WE INVITE YOU TO VISIT OUR STATE-OF-THE-ART PRODUCTION FACILITY IN NAPPANEE, INDIANA. PLANT TOURS ARE OFFERED AT 10:00 A.M. AND 1:00 P.M., MONDAY THROUGH FRIDAY.



NEWMAR QUALITY: A WAY OF LIFE

355 N. DELAWARE STREET
NAPPANEE, INDIANA 46550
PH: 219.773.7791 • WWW.NEWMARCORP.COM

PRICES, SPECIFICATIONS AND FLOORPLANS ARE SUBJECT TO CHANGE AT NEWMAR'S DISCRETION WITHOUT PRIOR WRITTEN NOTICE OR OBLIGATION. PLEASE SEE YOUR DEALER FOR ACTUAL SAMPLES AND SPECIFICATIONS. ©2000 NEWMAR CORPORATION. PRINTED IN THE U.S.A. (11/00)