



2002 Kountry Star

Class A/Diesel Pusher

boundaries: *none*



Newmar Kountry Star



freedom
license to explore
roasted marshmallows
monotony

models: Class A/Diesel Pusher

dreams:

realized

standard:

luxury

NEWMAR 2002



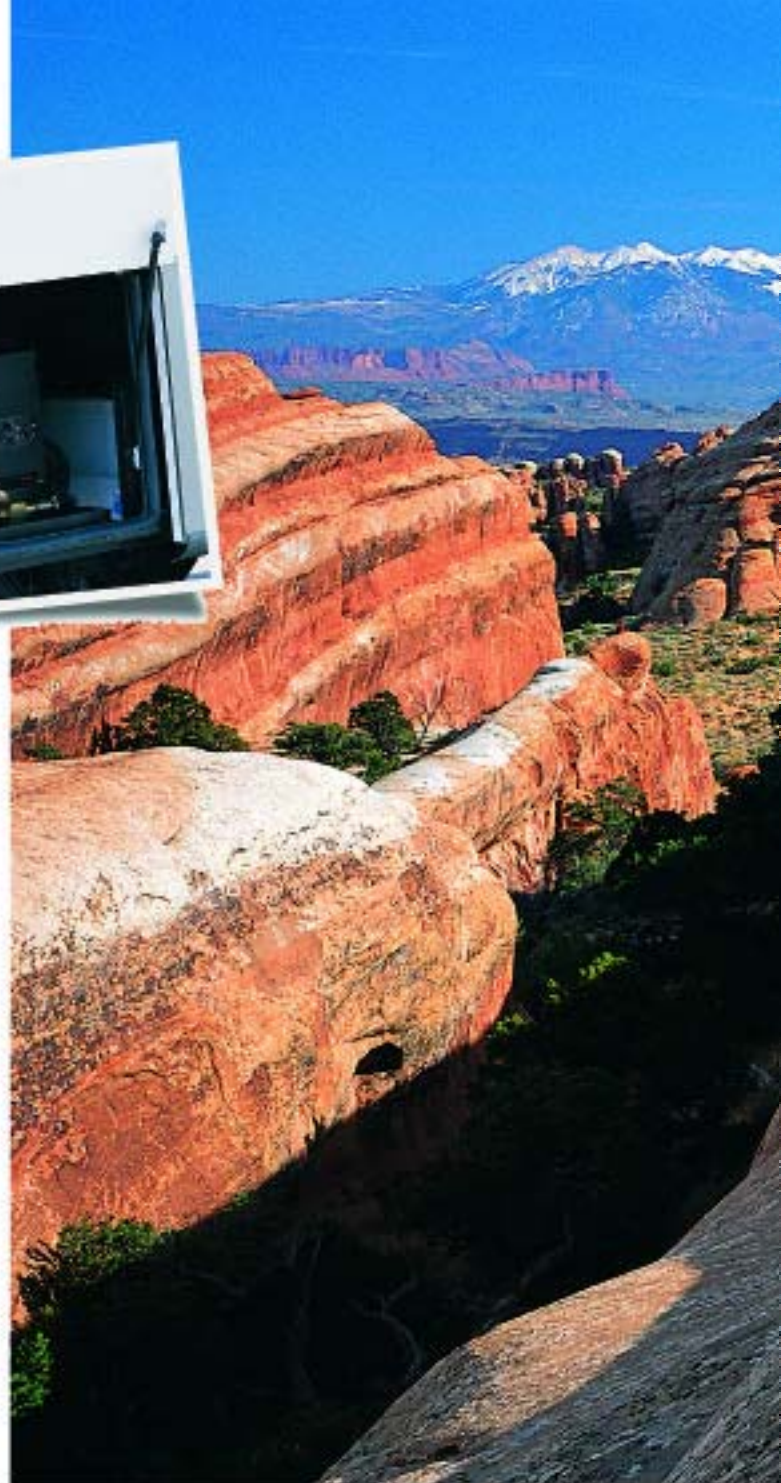
*Lined, in-frame
storage compartment*

Discovery

Discovery can be as simple as seeing your first jellyfish or feeling the warm sand between your toes. It's about the smile on your face that comes with sharing special moments and making memories that will last forever.

Newmar customers understand this feeling. Whether exploring new destinations or returning to their favorite places, they expect more out of life and know just how to get it. The Kountry Star is their connection to their friends, their families and their freedom. They can discover a starfish today and look at the Grand Canyon tomorrow...wherever the spirit moves them.

Travel farther than your imagination can take you, and discover a whole new world with Kountry Star.



Discover the Freedom

Discover the freedom of the open road with the Kountry Star's new features for 2002. For example, the Ford 22,000-lb. chassis now comes standard on all Kountry Star floorplans. We've also increased the fresh water capacity to 75 gallons in order to make your Kountry Star even easier to maintain. This will help you spend less time replenishing the tank and more time enjoying the sights. You will enjoy the Kountry Star's completely redesigned look with new exterior graphics and redesigned exterior touches including new front and rear caps, windshield, headlights and taillights.

*colors (left to right):
Willow Green, Bronze Charcoal*





2002 Kountry Star

Class A

boundaries: *none*



2002 Kountry Star Class A



www.newmarcorp.com

Wherever you see this symbol, you can log on to our Web site to take a photo tour of the Kountry Star's interior.



www.newmarcorp.com

Discover Satisfaction

At Newmar, we build our motorhomes with your satisfaction in mind. We listen to our customers' comments and product suggestions to help us build motorhomes that meet their needs. One such feature update for the 2002 Kountry Star included moving the cup holder to the driver's left for added convenience. Other changes include the creation of three new interiors with color options and a new brand of microwave. The new optional GE 30" microwave provides more interior cooking space, sensor functions and 50 more watts for easier use and less time in the kitchen.

Main photo shows Kountry Star Class A 3797 with Oak and Palm Green decor



2002 Kountry Star

Class A

boundaries: none



Inset Photos:

Use the legend at right to find photo number.
See descriptions below.

- 1. Kitchen (Oak)
- 2. Dinette
- 3. Lavatory

legend

(main photo)	1
	2
	3

1

The spacious kitchen features a Dometic refrigerator with matching door panels, a spacesaver microwave and three-burner recessed range with glass oven door.

2

The sofa and dinette are shown in Palm Green with standard Oak woodwork and cabinetry for plenty of storage.

3

details

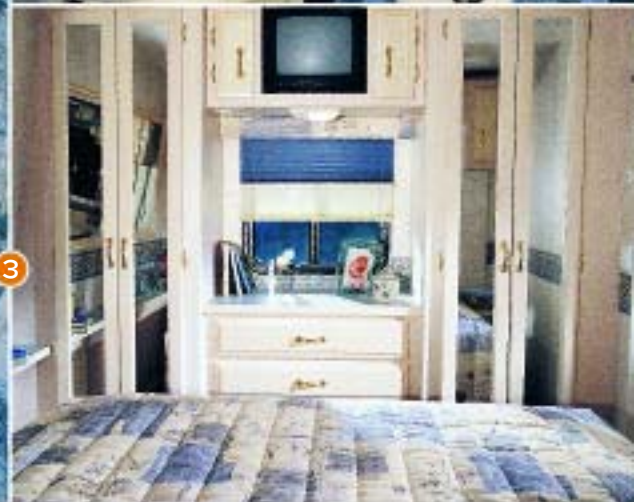
The bathroom is right off the bedroom and features a tub/shower with glass shower door, a cultured marble lavatory countertop and Oak cabinetry.



New Horizons

There is no better way to explore new horizons than in the comforts of the Kountry Star Class A motorhome. Surround yourself in your own personal style by choosing from one of three interior decors — Palm Green, Charcoal or Waterway Blue. The Kountry Star's featured cabinetry is stunning Oak, or for a lighter woodwork, choose our optional Snow Maple cabinets. Newmar offers you more choices to personalize the look and feel of your motorhome and get the maximum pleasure and enjoyment from your travel experience.

Main photo shows Kountry Star Class A 3566 with optional Snow Maple and Waterway Blue decor



 **2002 Kountry Star**
Class A boundaries: none



Inset Photos:

Use the legend at right to find photo number.
See descriptions below.

- 1. Dinette (Waterway Blue)
- 2. Cockpit
- 3. Bedroom

legend

(main photo)	1
	2
	3

1

The cozy dinette, shown in Waterway Blue decor with optional Snow Maple cabinetry and woodwork, makes the perfect place to sit down and enjoy a meal.

2

Flexsteel swivel and recline front seats provide the driver and front passenger with ultimate comfort, while a 27" color television located in the overhead dash provides entertainment for all of the passengers.

3

details

The bedroom features a queen-sized bed with a beautifully quilted bedspread, reverse sham and accent pillow as standard features. Optional Snow Maple cabinetry and a color television are shown.



Exterior wash station

Discovering a Change of Pace

Newmar customers enjoy nothing more than seeing new sites, spending time with family and friends and experiencing new activities. They love the occasional change of scenery and change of pace that motorhome travel offers them. At Newmar, we also love a change of pace. That is why we have given the Kountry Star Diesel Pusher some new features and an updated look for 2002. We added new exterior graphics and a revamped exterior look, including new front and rear caps, windshield, and headlights and taillights. We also redesigned the front entrance doorstep for easier entry and exit. While there are changes to the Kountry Star that we're sure you'll enjoy, we know that it's also a good feeling to know that some things never change, like the excellent quality you've come to expect from Newmar.



*colors (left to right):
Willow Green, Smokey Bronze*



2002 Kountry Star

Diesel Pusher

boundaries: *none*



2002 Kountry Star Diesel Pusher



www.newmarcorp.com

Discover a New Travel Standard

All Newmar motorhomes and towables receive the same dedication and high-quality craftsmanship that we manufacture into our most luxurious model. This ensures that all of our products meet or exceed our exacting standards and your highest expectations — but we don't stop there. We constantly look for new ways to make your travel experience more pleasurable. For instance, the 2002 Kountry Star features three new interiors with color options that allow you to design the interior that feels like home every time you step inside. We've moved the cup holder to the driver's left for your convenience and have added a pull out countertop extension that conveniently slides into a cabinet slot when it's not in use. Explore the comfort and amenities of the Kountry Star and discover a whole new standard in travel.

Main photo shows Kountry Star Diesel Pusher 3667 with optional Snow Maple and Palm Green decor.



2002 Kountry Star

Diesel Pusher

boundaries: *none*



1

The bedroom, shown in Palm Green with optional Snow Maple cabinets, features a queen-sized bed, and the bathroom features a shower with a glass door.

2

The Flexsteel swivel and recline front seats and AM/FM dash stereo with CD player provide an enjoyable driving experience.

3

details

legend

(main photo)

1

2

3



Discover the Feeling

You deserve a motorhome that is quality crafted and designed with you in mind. At Newmar, we build motorhomes with the goal of going beyond your expectations to set higher industry standards than ever before. That is why we are always looking for new ideas to make the Newmar experience one of the best travel experiences of your life. We begin by letting you personalize your experience with a decor in Palm Green, Charcoal or Waterway Blue. The Oak cabinets or optional Snow Maple, Oak hardwood, Frosted Maple hardwood, or Cherry hardwood cabinets are built with the same care, dedication and style that is common of the Kountry Star. Discover the luxury of the Kountry Star and discover the luxury of feeling right at home, even when you're miles away.

Main photo shows Kountry Star Diesel Pusher 3669 with Oak and Charcoal decor



 **2002 Kountry Star**
 Diesel Pusher boundaries: *none*



1



2



3



Inset Photos:

Use the legend at right to find photo number.
 See descriptions below.

- 1. Kitchen
- 2. Bathroom
- 3. Bedroom

legend

(main photo)	1
	2
	3

1

The kitchen is shown with Oak hardwood cabinetry and features a spacesaver microwave three-burner recessed range with cooktop and a Dometic® refrigerator

2

A matching border around the cultured marble lavatory countertop is a nice touch to the Charcoal decor.

3

details

Shown in Charcoal decor with Oak hardwood cabinetry, the bedroom features a queen-sized bed with a beautifully quilted bedspread, reverse sham and accent pillow that come standard.

Standard Features

2002 Kountry Star Class A



Optional Features

2002 Kountry Star Class A



Swatches

Color Details



motorized chassis features

- Cruise Control
- Stainless Steel Wheel Simulators
- Tilt Steering Wheel

air conditioning & heating

- 15,000 BTU Brisk Central Air Conditioner
- Dash Heater and Air Conditioner High Output
- LP Leak Detector

appliances & accessories

- 6-Gallon Gas Water Heater (direct spark ignition)
- Spacesaver Microwave
- 27" Color TV in Dash Overhead
- 27" TV in 3058 Entertainment Center
- 3-Burner Recessed Range with Glass Oven Door (piezzo ignition)
- AM/FM Dash Stereo with CD Player
- Cable TV Connection with RG6 Coax
- Dometic® 3862 Refrigerator (8 cu.ft.)
- Hardwood Raised Panel Refrigerator Front
- Satellite Prep (phone, TV jack and recept)
- TV Antenna with Power Booster (one exterior and two interior jacks)

cabinets & furniture

- Flexsteel® Swivel and Recline Front Seats (3-point seat belt)
- Flexsteel® Swivel Barrel Chair (where shown on floorplan drawing)

- Drawers with Metal Guides
- Oak Hardwood Raised Panel Cabinet Doors
- One-Piece Cultured Marble Lavatory Countertop in Bathroom
- Solid Surface Countertop in Kitchen with Color-Coordinated Edge and Acrylic Sink

electrical features

- 55-Amp Converter
- Battery Disconnect (for house batteries)
- 5,500-Watt Generac® Generator with One Remote Switch and Automatic Changeover
- 5-Watt Solar Panel to Charge Chassis Battery
- 50-Amp Electrical Service with Flexible Cord
- Driving Lights
- Emergency Engine Start Switch
- Exterior Security Lights (one installed on each side)
- Interior Courtesy Lights
- Lights in Exterior Storage Compartments
- Lights in Wardrobes

exterior features

- Brite-Tek Roof with 7mm Decking
- Convex Exterior Mirrors with Remote Control and Defrost
- Gel-Coated Fiberglass Exterior Sides

- Hitch for Towing Car with Two Extra 14-Gauge Wires for Customer Use (class-3, 5000# rating)
- Roof Rack and Ladder

interior features

- Vinyl Floor in Kitchen and Bathroom Areas
- Day/Night Pleated Window Shades and Lambrequins
- Quilted Bedspread with Reverse Sham and Accent Pillow
- Woven Soft Touch Ceiling

plumbing/bath features

- Exterior Shower (located on off-door side)
- Monitor Panel
- Sealand 500+ China Stool
- Sewage Holding Tank Rinse
- Fiberglass Tub/Shower with Glass Shower Door
- Water Heater Bypass System

construction features

- Aluminum Frame Sidewalls and Roof Construction, 16" On Center

windows, awnings & vents

- Tinted Safety Glass Windows
- Automatic Double Entrance Door Step
- Fan-tastic Vent with Rain Sensor in Kitchen Area
- Power Vent in Bathroom with Wall Switch
- Skylight in Bathroom (located above tub/shower)

option packages

- Touch Control Jacks, Rear View Monitor, A&E Main Slideout Cover and 9000 Side Awnings [448 lbs.]
- 2-13,500 BTU Penguin® Air Conditioners, Touch Control Jacks, Rear View Monitor, A&E Main Slideout Cover and 9000 Side Awning [548 lbs.]

appliances & accessories

- 30" Convection Microwave with 3-Burner Cooktop [13 lbs.]
- Compact Washer/Dryer (available on 3560, 3566, 3764, 3797) [185 lbs.]
- Dometic® 1062 Refrigerator (10 cu. ft.) [91 lbs.]
- Washer and Dryer Prep for Compact Washer/Dryer (available on 3560, 3566, 3764, 3797) [22 lbs.]

cabinets & furniture

- Cherry Hardwood Cabinets [25 lbs.]
- Frosted Maple Hardwood Cabinets [25 lbs.]
- Oak Hardwood Cabinets [25 lbs.]
- Snow Maple Cabinets
- Ultra Leather Cirrus® Front Seats with 6-Way Power, Power Lumbar and Ergo Flex Arms [50 lbs.]
- Ultra Leather Cirrus® Swivel Barrel Chair in lieu of Standard (not available on 3058) [5 lbs.]
- Built-in Booth Dinette in lieu of Standard (available on 3357, 3560, 3764, 3797) [23 lbs.]

electrical features

- 400-Watt Inverter, for Dash TV [10 lbs.]

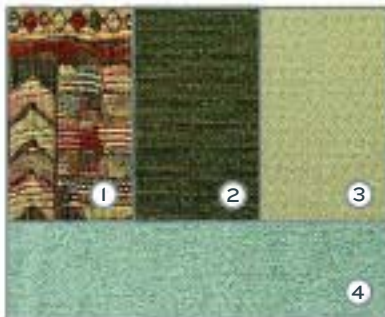
interior features

- 12" Marble Look Floor Tile in Bathroom and Kitchen Areas [57 lbs.]
- Simulated Plank Floor in Bathroom and Kitchen Areas [71 lbs.]

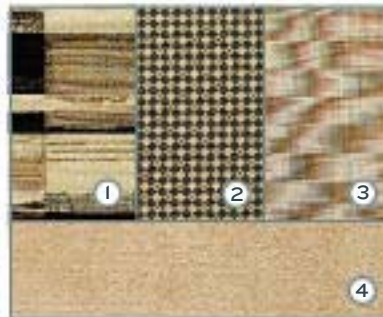


www.newmarcorp.com

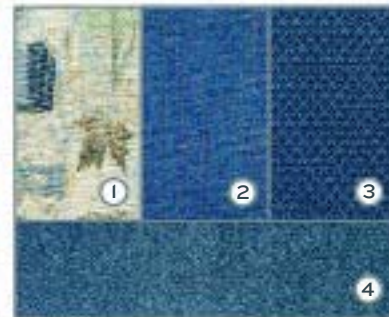
Visit www.newmarcorp.com for a complete list of all available options and swatches.



Palm Green



Charcoal



Waterway Blue

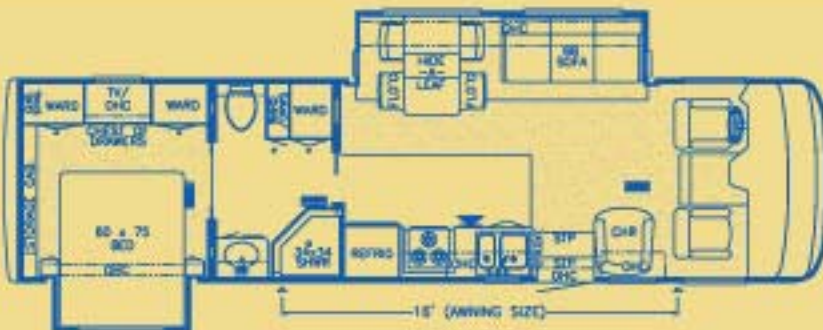
1.Sofa 2.Accent 1 3.Accent 2 4.Carpet
See dealer swatch samples for truer colors and fabric locations

Specifications: 2002 Kountry Star Class A



model KSCA 3357

approx. overall length	33' 9"	sewage	50
width	100"	water	75
approx. overall height	11' 8"	LP	32
interior width	94"	furnace	35,000
interior height	78"	water heater	6
grey	50		



model KSCA 3560

approx. overall length	35' 9"	sewage	50
width	100"	water	75
approx. overall height	11' 8"	LP	32
interior width	94"	furnace	35,000
interior height	78"	water heater	6
grey	50		



model KSCA 3566

approx. overall length	35' 9"	sewage	50
width	100"	water	75
approx. overall height	11' 8"	LP	32
interior width	94"	furnace	35,000
interior height	78"	water heater	6
grey	50		



model KSCA 3651

approx. overall length	37' 2"	sewage	50
width	100"	water	75
approx. overall height	11' 8"	LP	32
interior width	94"	furnace	35,000
interior height	78"	water heater	6
grey	50		



Specifications: 2002 Kountry Star Class A



model KSCA 3764

approx. overall length	37' 10"	sewage	50
width	100"	water	75
approx. overall height	11' 8"	LP	32
interior width	94"	furnace	42,000
interior height	78"	water heater	6
grey	50		



model KSCA 3776

approx. overall length	37' 10"	sewage	50
width	100"	water	75
approx. overall height	11' 8"	LP	32
interior width	94"	furnace	42,000
interior height	78"	water heater	6
grey	50		



model KSCA 3778

approx. overall length	37' 10"	sewage	50
width	100"	water	75
approx. overall height	11' 8"	LP	32
interior width	94"	furnace	42,000
interior height	78"	water heater	6
grey	50		

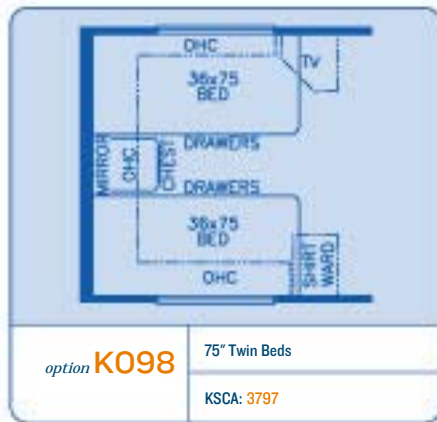


model KSCA 3797

approx. overall length	37' 10"	sewage	50
width	100"	water	75
approx. overall height	11' 8"	LP	32
interior width	94"	furnace	42,000
interior height	78"	water heater	6
grey	50		



Floorplan Options: 2002 Kountry Star Class A



		Model	Engine HP	Axle Ratio	Fuel Cap.	Wheel Base	Front GAWR	Rear GAWR	GVWR	GCWR	Approx. UVW	Approx. NCC
Chassis Specifications: Kountry Star Diesel Pusher/Class A	Kountry Star DP Freightliner Chassis	2002KSDP3665	300	4.63	100	228	10,410	17,500	27,910	37,910	20,558	7,352
		2002KSDP3667	300	4.63	100	228	10,410	17,500	27,910	37,910	21,194	6,716
		2002KSDP3668	300	4.63	100	228	10,410	17,500	27,910	37,910	20,982	6,928
		2002KSDP3669	300	4.63	100	228	10,410	17,500	27,910	37,910	20,897	7,013
		2002KSDP3677	300	4.63	100	228	10,410	17,500	27,910	37,910	21,137	6,773
	Kountry Star CA Ford Chassis	2002KSCA3357	310	5.38	75	208	7,500	14,500	22,000	26,000	16,312	5,688
		2002KSCA3560	310	5.38	75	220	7,500	14,500	22,000	26,000	16,768	5,232
		2002KSCA3566	310	5.38	75	220	7,500	14,500	22,000	26,000	16,902	5,098
		2002KSCA3651	310	5.38	75	228	7,500	14,500	22,000	26,000	17,156	4,844
		2002KSCA3764	310	5.38	75	234	7,500	14,500	22,000	26,000	16,675	5,325
		2002KSCA3776	310	5.38	75	240	7,500	14,500	22,000	26,000	17,302	4,698
		2002KSCA3778	310	5.38	75	240	7,500	14,500	22,000	26,000	17,316	4,684
		2002KSCA3797	310	5.38	75	234	7,500	14,500	22,000	26,000	16,901	5,099
	Kountry Star CA Workhorse Chassis	2002KSCA3357	340	4.78	75	208	8,000	14,500	22,000	26,000	16,567	5,433
		2002KSCA3560	340	4.78	75	220	8,000	14,500	22,000	26,000	17,023	4,997
		2002KSCA3566	340	4.78	75	220	8,000	14,500	22,000	26,000	17,157	4,843
		2002KSCA3651	340	4.78	75	240	8,000	14,500	22,000	26,000	17,411	4,589
		2002KSCA3764	340	4.78	75	240	8,000	14,500	22,000	26,000	16,930	5,070
		2002KSCA3776	340	4.78	75	240	8,000	14,500	22,000	26,000	17,557	4,443
		2002KSCA3778	340	4.78	75	240	8,000	14,500	22,000	26,000	17,571	4,429
		2002KSCA3797	340	4.78	75	240	8,000	14,500	22,000	26,000	17,156	4,844

*Lengths, heights, widths and dry weights are approximate. Weight will vary based on optional equipment added to the above base weight.

Standard Features

2002 Kountry Star Diesel Pusher



motorized chassis features

- Cruise Control
- Stainless Steel Wheel Simulators

air conditioning & heating

- LP Leak Detector
- Dash Heater and Air Conditioner High Output
- 15,000 BTU Brisk Central Air Conditioner

appliances & accessories

- Cable TV Connection with RG6 Coax
- Satellite Prep (phone, TV jack and recept)
- 3-Burner Recessed Range with Glass Oven Door (piezzo ignition)
- Dometic® 3862 Refrigerator (8 cu. ft.)
- TV Antenna with Power Booster (one exterior and two interior jacks)
- AM/FM Dash Stereo with CD Player
- 27" Color TV in Dash Overhead
- Spacesaver Microwave
- 6-Gallon Gas/Electric Water Heater (direct spark ignition)

cabinets & furniture

- Flexsteel® Swivel Barrel Chair (where shown on floorplan drawing)
- Drawers with Metal Guides
- Hidden Leaf Dinette Table with Two Fixed Chairs and Two Folding Chairs
- Flexsteel® Swivel and Recline Front Seats (with 3-point seat belt)

- Corian® Countertop in Kitchen with Color-Coordinated Edge and Acrylic Sink
- One-Piece Cultured Marble Lavatory Countertop in Bathroom
- Oak Hardwood Raised Panel Doors on Overhead Cabinets (flat panel doors on base cabinets)

electrical features

- Battery Disconnect (for house batteries)
- 50-Amp Electrical Service with Flexible Cord
- Exterior Security Lights (one installed on each side)
- Driving Lights
- Lights in Exterior Storage Compartments
- Lights in Wardrobes
- Interior Courtesy Lights
- Emergency Engine Start Switch
- 55-Amp Converter
- 5-Watt Solar Panel to Charge Chassis Battery
- Two 6-Volt Batteries
- 7,500-Watt Generac® Diesel Generator with Automatic Changeover

exterior features

- Convex Exterior Mirrors with Remote Control and Defrost
- Roof Rack and Ladder
- Brite-Tek Roof with 7mm Decking

- Hitch for Towing Car, with 2 extra 14-gauge wires for customer use (class-3, 5000# rating)
- Gel-Coated Fiberglass Exterior Sides

interior features

- Quilted Bedspread with Reverse Sham and Accent Pillow
- Woven Soft Touch Ceiling
- Day/Night Pleated Window Shades and Lambrequins
- Vinyl Floor in Kitchen and Bathroom Areas

plumbing/bath features

- Exterior Shower (located on off door side)
- Sealand 500+ China Stool
- Fiberglass Tub/Shower with Glass Shower Door
- Monitor Panel
- Sewage Holding Tank Rinse
- Water Heater Bypass System

construction features

- Aluminum Frame Sidewalls and Roof Construction, 16" On Center

windows, awnings & vents

- Automatic Double Entrance Door Step
- Power Vent in Bathroom with Wall Switch
- Tinted Safety Glass Windows
- Fan-tastic Vent with Rain Sensor in Kitchen Area
- Skylight in Bathroom (located above tub/shower)

Optional Features

2002 Kountry Star Diesel Pusher



option packages

- Touch Control Jacks, Rear View Monitor, A&E Main Slideout Cover and 9000 Side Awning [448 lbs.]
- Two 13,500 BTU Penguin® Air Conditioners, Touch Control Jacks, Rear View Monitor, A&E Main Slideout Cover and 9000 Side Awning [548 lbs.]

appliances & accessories

- 30" Convection Microwave with 3-Burner Cooktop [13 lbs.]
- Ceiling Fan in Bedroom (available on 3665) [10 lbs.]
- Dometic® 1062 Refrigerator (10 cu. ft.) [91 lbs.]

cabinets & furniture

- Cherry Hardwood Cabinets
- Frosted Maple Hardwood Cabinets
- Oak Hardwood Cabinets
- Snow Maple Cabinets
- Ultra Leather Cirrus® Front Seats with 6-Way Power, Power Lumbar and Ergo-Flex Arms [50 lbs.]

electrical features

- 400-Watt Inverter, for Dash TV [10 lbs.]

interior features

- 12" Marble Look Floor Tile in Bathroom and Kitchen Areas [57 lbs.]
- Simulated Plank Floor in Bathroom and Kitchen Areas [57 lbs.]



www.newmarcorp.com

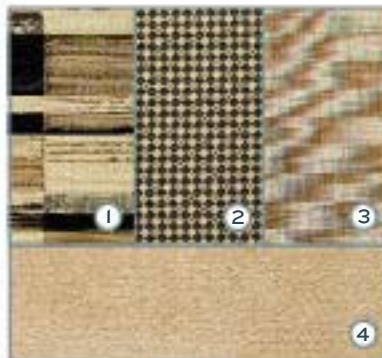
Visit www.newmarcorp.com for a complete list of all available options and swatches.

Swatches

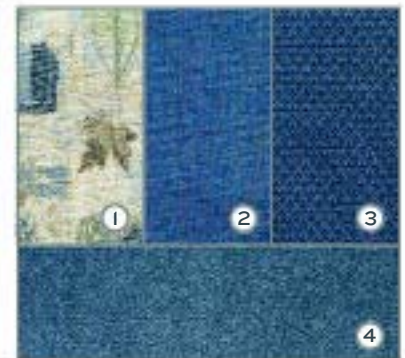
Color Details



Palm Green



Charcoal



Waterway Blue

1.Sofa 2.Accent 1 3.Accent 2 4.Carpet
See dealer swatch samples for truer colors and fabric locations

Specifications: 2002 Kountry Star Diesel Pusher



model KSDP 3665

approx. overall length	37' 5"	sewage	45
width	100"	water	105
approx. overall height	11' 8"	LP	32
interior width	94"	furnace	35,000
interior height	78"	water heater	6
grey	65		



model KSDP 3667

approx. overall length	37' 5"	sewage	45
width	100"	water	105
approx. overall height	11' 8"	LP	32
interior width	94"	furnace	35,000
interior height	78"	water heater	6
grey	65		



model KSDP 3668

approx. overall length	37' 5"	sewage	45
width	100"	water	105
approx. overall height	11' 8"	LP	32
interior width	94"	furnace	35,000
interior height	78"	water heater	6
grey	65		



Specifications: 2002 Kountry Star Diesel Pusher



model **KSDP 3669**

approx. overall length	37' 5"	sewage	45
width	100"	water	105
approx. overall height	11' 8"	LP	32
interior width	94"	furnace	35,000
interior height	78"	water heater	6
grey	65		



30' (APPROX. SIZE)




model **KSDP 3677**

approx. overall length	37' 5"	sewage	45
width	100"	water	105
approx. overall height	11' 8"	LP	32
interior width	94"	furnace	35,000
interior height	78"	water heater	6
grey	65		

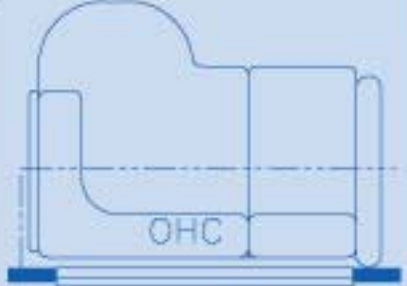


30' (APPROX. SIZE)


Floorplan Options: 2002 Kountry Star Diesel Pusher




option KI05	75" Twin Beds
KSDP: 3665	



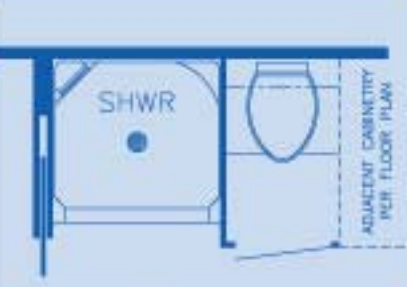
option K200	L-Sofa 58" Leather
KSDP: 3667, 3668, 3669, 3677	



option K240	L-Sofa 58" Cloth
KSDP: 3667, 3668, 3669, 3677	



option K276	Booth Dinette
KSDP: 3665	



option P060	Enclosed Stool Room with Straight Shower
KSDP: 3668, 3669	

Typical Construction Features

For construction representation purposes only. Models may differ from what is pictured.



Because of the weight of a Diesel Pusher engine, Newmar adds a bridge-like truss structure that eliminates undue stress on the sidewalls.



1. Stylish one-piece fiberglass front cap
2. Welded aluminum crowned roof structure with 16" on-center framing
3. True central air conditioning
 - Insulated ducted distribution and return
4. 1" tubular aluminum rafter with full joint weld
5. Exclusively designed slideout header for added strength
6. Fiberglass batten insulation
7. Brite-Tek or fiberglass roof
8. Exclusive slideout roof dam channeling water run off
9. Aluminum or fiberglass wrap
 - Additional aluminum reinforced extrusion connecting sidewall to roof over most slideouts
10. 1.5" C-channel aluminum studs with punched holes allows for:
 - Ventilation
 - Wiring to run through the sidewalls for convenient receptacles
 - Reduced weight
 - Increased strength of the stud
11. Aluminum sidewall structure with 16" on-center framing
12. Composite one-piece gel coat exterior sidewall
13. Stylish one-piece fiberglass rear cap
14. Molded wheelwell liners in most units
15. Tinted safety glass
16. Electric rack and pinion slideout
 - Flush floor slide
 - Automotive-style double bulb seal
17. Plush carpet
18. Carpet padding
19. 5/8" floor decking
20. Fiberglass batten insulation
21. 2"x 3" wood stringer
22. Fiberglass batten insulation
23. Kraft paper (vapor barrier)
24. 5/8" bead foam
25. Plywood interior wall board
26. Welded interlocking top and bottom rail to sidewall stud

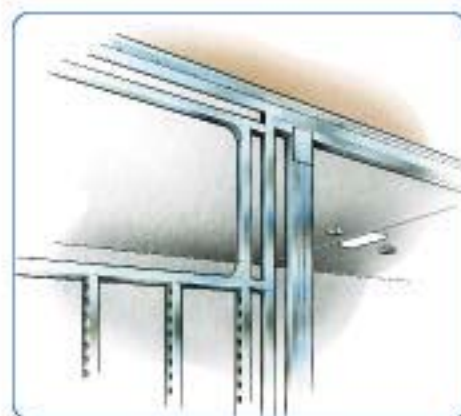
Construction Features

1 to 26

Beneath the Surface

At Newmar, our relentless pursuit of quality is a source of great pride. That's why we're not afraid to reveal what we're really made of. When you look below the surface you can see our construction is unlike any other. We don't take short cuts, we construct. Our units are framed like the framing in your home. No matter which model you buy, each Newmar motorhome is assembled on the same production line, built with the same high standards and care. Newmar Quality: A Way of Life, and we mean that from the inside out.

We prefer sidewall framing 16 inches on center with aluminum studs. Why? Because this construction provides room for more insulation and allows wall outlets to be positioned like those in your home. In addition, this sidewall doesn't depend on the lamination process for its strength.



Delivering on Our Promises

The Newmar warranty is as straightforward and honest as our philosophy—build an excellent product and stand behind it all the way. We take pride in the fact that our 36-month or 36,000-mile, bumper-to-bumper limited warranty is the best in the industry. Being the best has many advantages. Not only do our customers go home with confidence and peace of mind, they go home with a warranty that is easy to read and understand, with no hidden fine print or confusing language.

At Newmar, we engineer quality into everything we build and require the same high standards of every component we include in our products. So, when you compare warranties, check the fine print. We think you will find our warranty amazingly simple and surprisingly complete...just the way our customers want it.

Exacting quality, simple language, and products you can trust and enjoy. That is the Newmar promise.

*Warranty does not cover tires, batteries or chassis. The chassis is covered by the individual manufacturer's warranty.



Newmar Quality: A Way of Life

NEWMAR CORPORATION
355 N DELAWARE ST
PO BOX 30
NAPPANEE IN 46550-0030
219-773-7791 Fax 219-773-2895
www.newmarcorp.com

Don't forget to check out the Newmar Kountry Klub. All you need for eligibility is to be a proud owner of any of the fine Newmar recreational vehicles.

We invite you to visit our state-of-the-art production facility in Nappanee, Indiana. Plant tours are offered at 10:00 a.m. and 1:00 p.m., Monday through Friday.

visit us at:



www.newmarcorp.com

NEWMAR 2002

official Newmar dealer

Some features shown in our literature are optional. Colors and finishes are photographic representations and may appear differently when viewing actual materials. Prices, specifications and floorplans are subject to change at Newmar's discretion without prior written notice or obligation. Please see your dealer for actual samples and specifications.

©2001 Newmar Corporation. Printed in the U.S.A. (6/01)