



## 2002 Mountain Aire

Class A/Diesel Pusher

limits: 



## Newmar Mountain Aire

- ☒ fresh air
- ☒ vistas
- ☒ emotions stirred
- ☐ limitations

models: **Class A/Diesel Pusher**

sunsets:

*vivid*

standard:

*freedom*

NEWMAR 2002



*Exterior wash station*

## Inspiration

You've built a life following your instincts and have enjoyed your share of good ideas along the way. Some of your greatest inspirations these days come from spending less time at work and more time looking at the stars. You're ready for new adventures, a change of scenery and a closer look at your grandson's smile. Inspiration strikes when you least expect it. And, by the feel of things, this could be your best idea yet.

At Newmar, we understand the meaning of inspiration. We build it into our products every day. Take the Mountain Aire, for instance. It's pure Newmar throughout...comfort that surrounds you, craftsmanship that rewards you and solid engineering that moves you. It's a personal experience, imprinted with the kind of inspiration you can appreciate, no matter where you care to look...a perfect example of what happens when people are committed to quality as a way of life.

So the next time the inspiration strikes, do something crazy and follow your heart. You never know where it might lead you.



## Behind Every Inspiration

At Newmar, our customers are the inspiration behind our products. Your satisfaction is our number one priority, and we welcome your ideas on ways to continuously improve our products. One Mountain Aire enhancement for 2002 is the increase in fresh water capacity. More fresh water at your fingertips means less refilling and more time for fun. We've also added new fully painted graphics to the exterior of the Mountain Aire for a stylish appearance that will turn heads wherever you travel.

*colors (left to right):  
Charcoal, Pacific Blue, Woodland Green, Suede*





2002 Mountain Aire

Class A

limits: 0



2002 Mountain Aire Class A



[www.newmarcorp.com](http://www.newmarcorp.com)

Wherever you see this symbol, you can log on to our Web site to take a photo tour of the Mountain Aire's interior.



[www.newmarcorp.com](http://www.newmarcorp.com)

## A Feeling Inside

Step inside the Mountain Aire Class A motorhome and you can feel the inspiration behind the quality craftsmanship. The 2002 model line offers you a choice of six interiors with color options to create the decor that's just right for you. At the request of our customers, we've moved the cup holder to the driver's left. This provides a more ergonomic placement for the convenience and comfort of our drivers. We have also added more woodgrain to the interior walls to provide a warm and inviting look and feel to come home to. The Mountain Aire surrounds you with intelligent design and quality-crafted beauty no matter where you travel.

*Main photo shows Mountain Aire Class A 3566 with Oak and Marrakesh Red decor*



 **2002 Mountain Aire**  
Class A limits: 



### Inset Photos:

Use the legend at right to find photo number.  
See descriptions below.

- 1. Living Area
- 2. Cockpit
- 3. Bedroom

legend

(main photo)	1
	2
	3

1

The living area features a comfortable sofa, shown in Marrakesh Red, which is surrounded by Oak cabinets that provide plenty of storage space

2

Flexsteel leather/vinyl front seats, equipped with six-way power, make driving comfortable

3

details

The bedroom is shown in Marrakesh Red decor and features a comfortable queen-sized bed and Oak cabinetry that houses a color television for your viewing pleasure



## The Choice is Yours

At Newmar, we understand that our customers are as unique as the destinations to which they travel. There are no two exactly alike. That is why we are proud to offer you a variety of choices to personalize the look and feel of your environment and to enhance your travel experience. The Mountain Aire is a perfect example with a wide selection of decors like Italian Straw, Caspian Blue, Marrakesh Red, Sea Pearl Green, Aubergine and Phantom Grey. Adorn your interior with standard Oak hardwood cabinetry or select from optional Cherry hardwood, Frosted Maple, or the newest option, Pecan-Maple hardwood. Whatever your taste, we have the interior to fit your style.

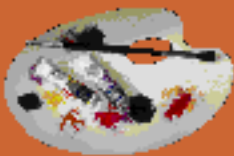
*Main photo shows Mountain Aire Class A 3560 with Pecan-Maple and Caspian Blue decor*



## 2002 Mountain Aire

Class A

limits:



### Inset Photos:

Use the legend at right to find photo number.  
See descriptions below.

- 1. Bedroom
- 2. Lavatory
- 3. Kitchen

legend

(main photo)	1
	2
	3

1

In the bedroom, shown in Caspian Blue, Pecan-Maple hardwood cabinets surround the queen-sized bed that features a standard quilted bedspread with pillow shams, matching bed skirt and accent pillows.

2

The cozy bathroom is shown in Caspian Blue with Pecan-Maple hardwood cabinetry and features a Corian® countertop around the sink.

3

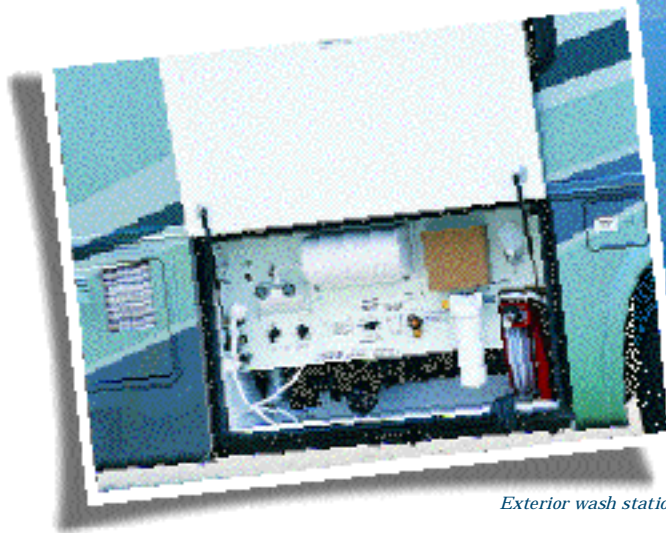
details

The kitchen is shown with optional Pecan-Maple hardwood cabinets, a spacesaver microwave, a Dometic® refrigerator with matching door panels and a Corian® countertop with a color-coordinated edge.

## Wherever the Road Leads

You can follow your inspiration in comfort and style with the Mountain Aire Diesel Pusher.

This trustworthy and appealing diesel pusher has taken on a new look for 2002. It sports a redesigned front entrance step that makes it more comfortable and easier than ever to get in and out to see the sites. In addition to feeling good, we know you also want to look good when you travel. That is why we added new exterior graphics that give the outside a fresh appearance that you will be proud to call your own. Wherever your inspiration leads you, set the course with the confidence and quality of a new Mountain Aire.



*Exterior wash station*

*colors (left to right):  
Charcoal, Pacific Blue, Woodland Green, Suede*





## 2002 Mountain Aire

Diesel Pusher

limits: 0



*2002 Mountain Aire Diesel Pusher*



## Experience the Inspiration

There are so many logical reasons why motorhomes are a great way to travel.

They provide on-the-spot elbowroom, nap space, your own kitchen to make the foods you enjoy day or night and all the conveniences of home everywhere you go. Some new features for the 2002 Mountain Aire Diesel Pusher give you even more reasons to choose an RV. For starters, the Mountain Aire has six interiors with color options and a new woodwork option, Pecan-Maple hardwood.

There is also a new window treatment style and, for additional space, a new pull-out countertop extension. The countertop takes up minimal room and conveniently slides into a cabinet slot when not in use. The Mountain Aire makes travel better in so many ways. Experience it first-hand and see for yourself.

*Main photo shows Mountain Aire Diesel Pusher 4094 with Oak and Aubergine decor*



## 2002 Mountain Aire

Diesel Pusher

limits: 0



### Inset Photos:

Use the legend at right to find photo number.  
See descriptions below.

- 1. Living Area
- 2. Desk Area
- 3. Bedroom

legend

(main photo)	1
	2
	3

1

In the living room, shown in Aubergine with Oak cabinets, an optional L-shaped leather/vinyl sofa and a Flexsteel® swivel rocker recliner with an adjustable headrest provide the ultimate relaxation experience.

2

The desk and entertainment center, which houses a color TV and VCR, are shown in optional Cherry hardwood and Italian Straw decor.

3

details

The bedroom, shown in Italian Straw decor, features a color television for your viewing pleasure and optional Cherry hardwood cabinets and drawers that provide ample room for storage.

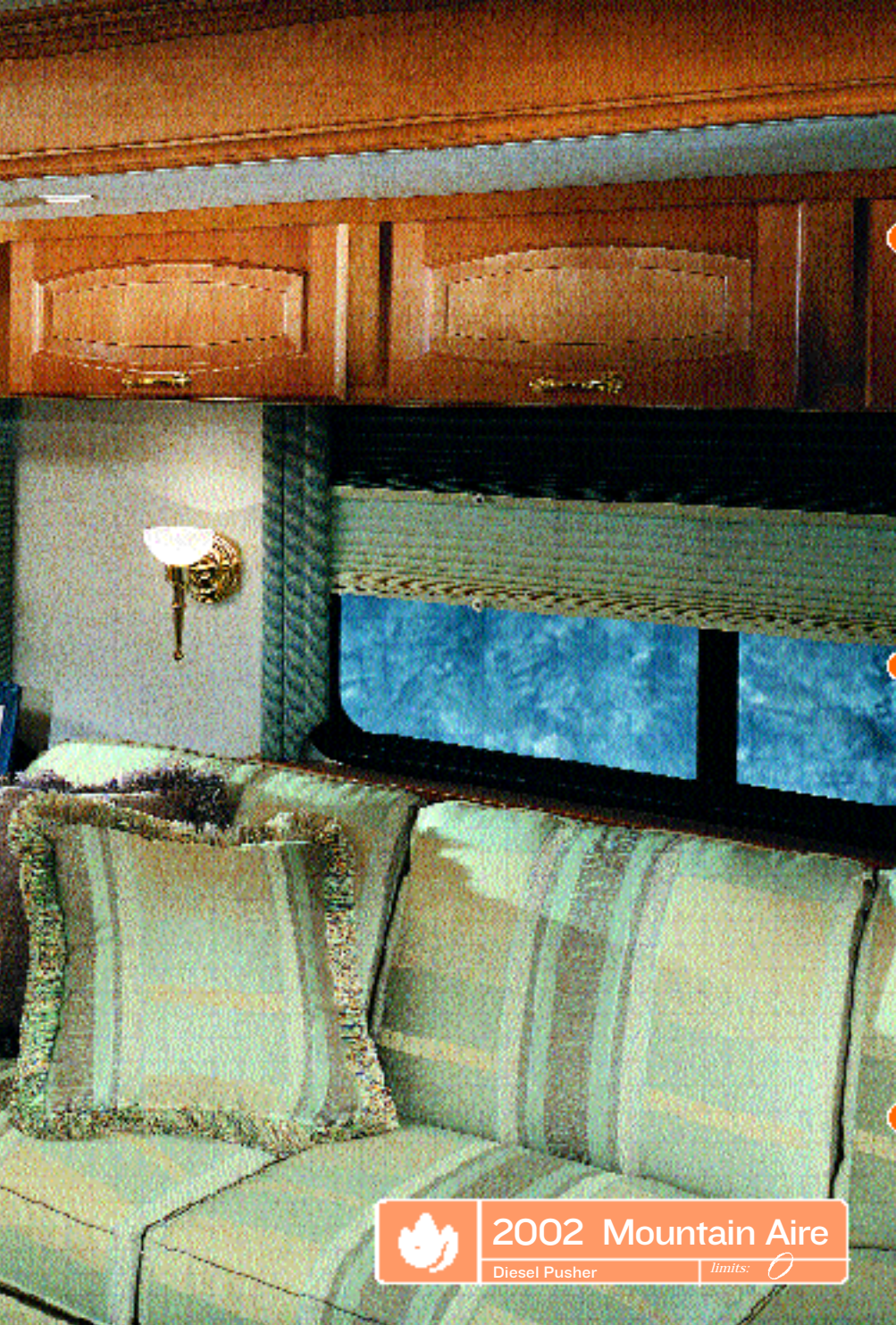


[www.newmarcorp.com](http://www.newmarcorp.com)

## The Best is Yet to Come

Once you discover the freedom, luxury and comfort of traveling in the Mountain Aire Diesel Pusher, you will never want to travel without it again. Enjoy the TV, VCR or stereo while surrounded by a pleasing decor of Italian Straw, Caspian Blue, Marrakesh Red, Sea Pearl Green, Aubergine or Phantom Grey. Oak hardwood is standard and Cherry hardwood, Frosted Maple or the newest, Pecan-Maple hardwood are optional. Some of our best inspirations are included in the Mountain Aire — some of your best inspirations are yet to come.

*Main photo shows Mountain Aire Diesel Pusher 4064 with Pecan-Maple hardwood and Sea Pearl Green decor.*



## 2002 Mountain Aire

Diesel Pusher

limits: 0



### Inset Photos:

Use the legend at right to find photo number.  
See descriptions below.

- 1. Kitchen
- 2. Living Area
- 3. Lavatory

legend

(main photo)	1
	2
	3

1

In the kitchen, convenient features like a 30" GE convection microwave, three-burner recessed cooktop and a Dometic refrigerator with an icemaker make mealtime simple.

2

The living area, shown in Sea Pearl Green, provides comfortable seating with an optional Flexsteel® European swivel recliner with ottoman.

3

details

The bathroom is shown in Sea Pearl Green decor with Pecan-Maple cabinetry and features a tub/shower with a glass shower door.

## Standard Features

2002 Mountain Aire Class A



### motorized chassis features

- Cruise Control
- Stainless Steel Wheel Simulators
- Tilt Steering Wheel

### air conditioning & heating

- 13,500 BTU Penguin® Central Air Conditioner
- Dash Heater and Air Conditioner High Output
- LP Leak Detector

### appliances & accessories

- 10-Gallon Gas/Electric Heater (direct spark ignition)
- Spacesaver Microwave
- 27" Color TV in Dash Overhead
- Color TV in Bedroom
- 3-Burner Recessed Range with Glass Oven Door (electronic ignition)
- AM/FM Dash Stereo with CD Player
- Cable TV Connection with RG6 Coax
- Dometic® 3862 Refrigerator (8 cu. ft.)
- Rear View Color Monitor System
- Satellite Prep (phone, TV jack and recept)
- TV Antenna with Power Booster (one exterior and two interior jacks)

### cabinets & furniture

- Oak Hardwood Cabinets with Raised Panel Double Arched Doors
- Flexsteel® Leather/Vinyl Front Seats with Six-Way Power, Ergo Flex Arms and Power Lumbar
- Flexsteel® Swivel Rocker Recliner with Adjustable Headrest
- Corian® Countertop in Bathroom with Porcelain Lavatory

- Corian® Countertop in Kitchen with Color-Coordinated Edge and Acrylic Sink
- Drawers with Metal Guides
- Hidden Leaf Dinette Table with Two Fixed Chairs and Two Folding Chairs

### electrical features

- Two 45-Amp Converters
- 6,600-Watt Generac® Generator with Remote Switch and Automatic Change Over
- Battery Disconnect (for house batteries)
- 5-Watt Solar Panel to Charge Chassis Battery
- 50-Amp Electrical Service with Flexible Cord
- Daytime Headlight System
- Driving Lights
- Emergency Engine Start Switch
- Exterior Security Lights (one installed on each side)
- Interior Courtesy Lights
- Lights in Exterior Storage Compartments
- Lights in Wardrobes

### exterior features

- Brite-Tek Roof with 7mm Decking
- Convex Exterior Mirrors with Remote Control and Defrost
- Fully Painted Exterior Graphics with Clear Coat Finish
- Gel-Coated Fiberglass Exterior Sides
- Hitch for Towing Car, with Two Extra 14-Gauge Wires for Customer Use (class-3, 5000# rating)

- Hydraulic Leveling Jacks with Touch Manual Control
- Roof Rack and Ladder

### interior features

- Simulated Plank Floor in Kitchen and Bathroom Areas
- Day/Night Pleated Window Shades and Lambrequins
- Padded Vinyl Ceiling
- Quilted Bedspread with Pillow Shams, Matching Bed Skirt and Accent Pillow

### plumbing/bath features

- Exterior Shower (located on off-door side)
- Fiberglass Tub/Shower with Glass Shower Door
- Monitor Panel
- Sealand 500+ China Stool
- Sewage Holding Tank Rinse
- Water Heater Bypass System

### construction features

- Aluminum Frame Sidewalls and Roof Construction, 16" On Center

### windows, awnings & vents

- Tinted Safety Glass Windows
- Automatic Double Entrance Door Step
- Fan-tastic Vent with Rain Sensor in Kitchen Area
- Power Vent in Bathroom with Wall Switch
- A&E 9000 Side Awning
- Skylight in Bathroom with Soft Shade (located above tub/shower)

## Optional Features

2002 Mountain Aire Class A



### appliances & accessories

- 30" Convection Microwave with 3-Burner Cooktop [13 lbs.]
- Ceiling Fan in Bedroom (available on 3758, 3796) [10 lbs.]
- Compact Washer/Dryer (available on 3566, 3758) [185 lbs.]
- Dometic® 1062 Refrigerator (10 cu. ft.) [91 lbs.]

### cabinets & furniture

- Cherry Hardwood Cabinets
- Frosted Maple Hardwood Cabinets
- Pecan-Maple Hardwood Cabinets

### electrical features

- 400-Watt Inverter for Dash TV [10 lbs.]
- Roof-Mounted Spot Light [3 lbs.]

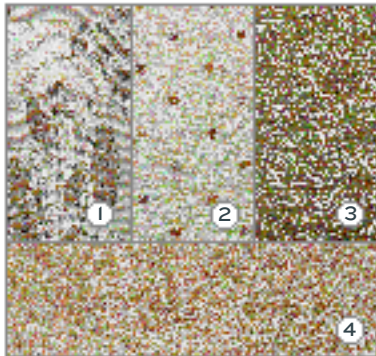
### interior features

- Ceramic Floor Tile in Bathroom Area [75 lbs.]

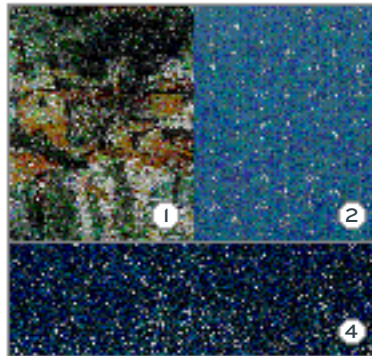


[www.newmarcorp.com](http://www.newmarcorp.com)

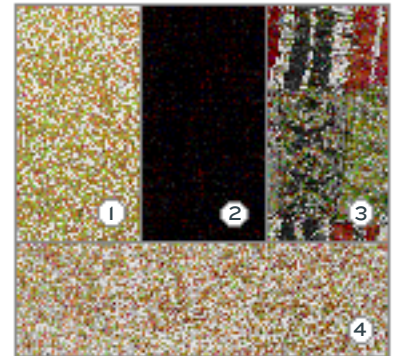
Visit [www.newmarcorp.com](http://www.newmarcorp.com) for a complete list of all available options and swatches.



Italian Straw



Caspian Blue



Marrakesh Red

1.Sofa 2.Accent 1 3.Accent 2 4.Carpet  
See dealer swatch samples for truer colors and fabric locations

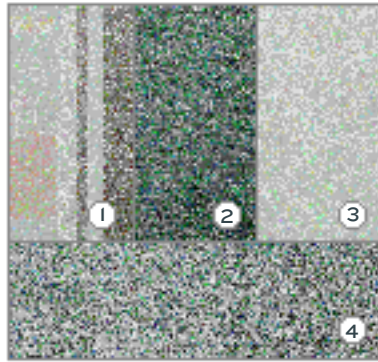
## Swatches

Color Details

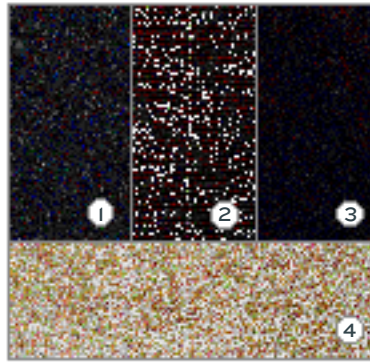


# Swatches

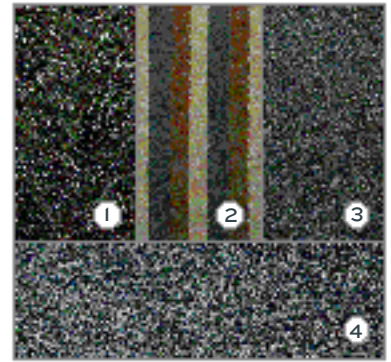
## Color Details



Sea Pearl Green



Aubergine



Phantom Grey

1.Sofa 2.Accent 1 3.Accent 2 4.Carpet

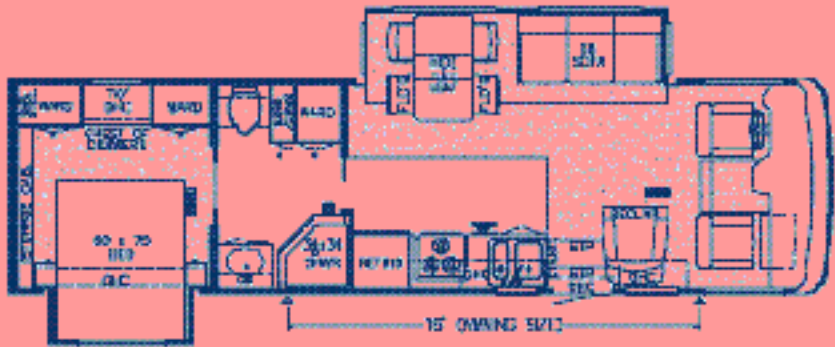
See dealer swatch samples for truer colors and fabric locations

## Specifications: 2002 Mountain Aire Class A



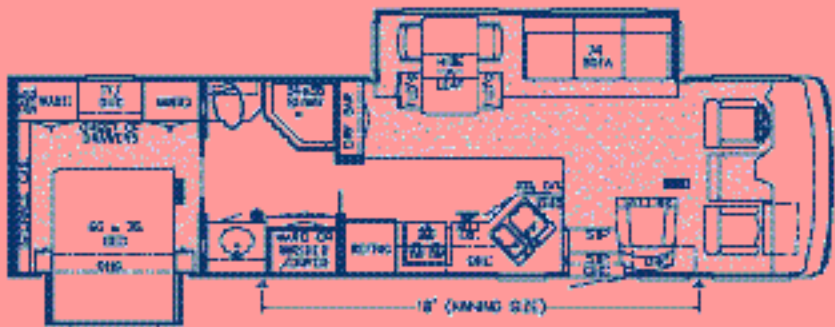
model **MACA 3357**

approx. overall length	33' 10"	sewage	50
width	100"	water	75
approx. overall height	12' 1"	LP	32
interior width	94"	furnace	35,000
interior height	78"	water heater	10
grey	50		



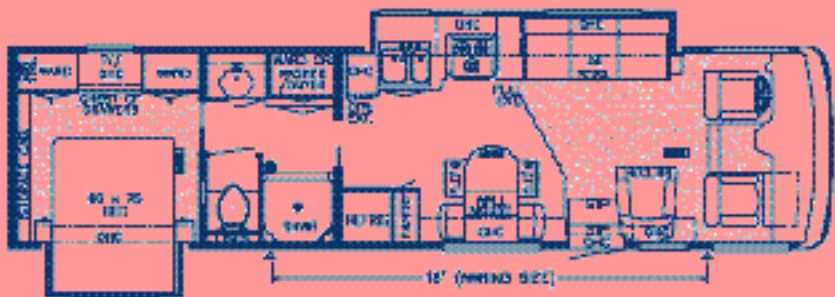
model **MACA 3560**

approx. overall length	35' 10"	sewage	50
width	100"	water	75
approx. overall height	12' 1"	LP	32
interior width	94"	furnace	35,000
interior height	78"	water heater	10
grey	50		



model **MACA 3566**

approx. overall length	35' 10"	sewage	50
width	100"	water	75
approx. overall height	12' 1"	LP	32
interior width	94"	furnace	35,000
interior height	78"	water heater	10
grey	50		

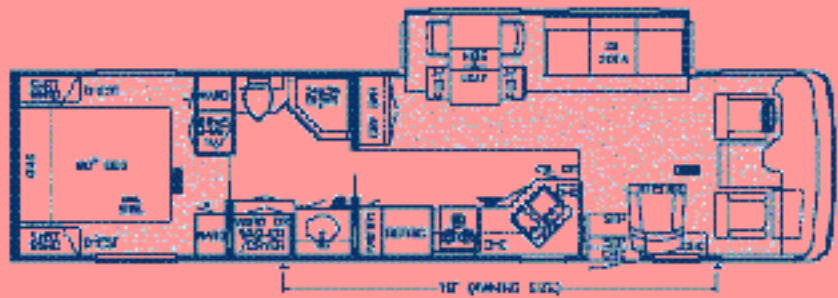


# Specifications: 2002 Mountain Aire Class A



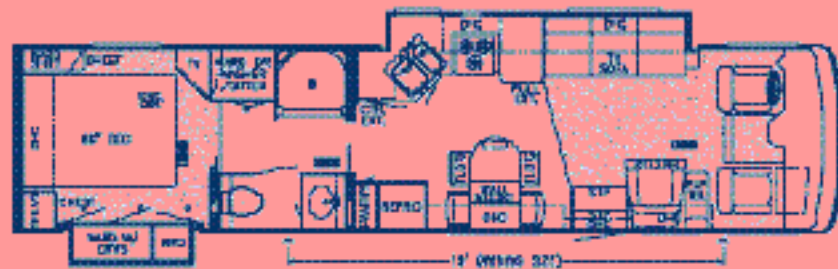
## model MACA 3758

approx. overall length	37' 11"	sewage	50
width	100"	water	75
approx. overall height	12' 1"	LP	32
interior width	94"	furnace	42,000
interior height	78"	water heater	10
grey	50		



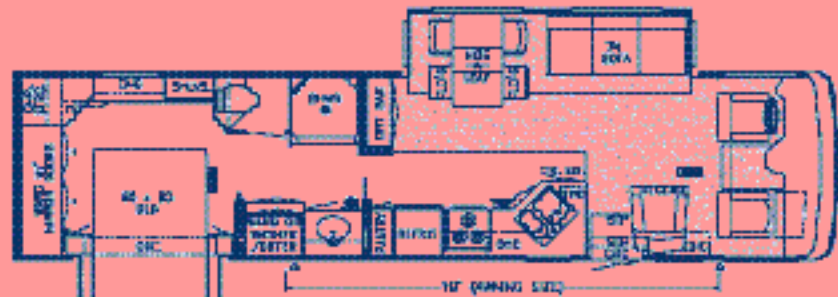
## model MACA 3776

approx. overall length	37' 11"	sewage	50
width	100"	water	75
approx. overall height	12' 1"	LP	32
interior width	94"	furnace	42,000
interior height	78"	water heater	10
grey	50		



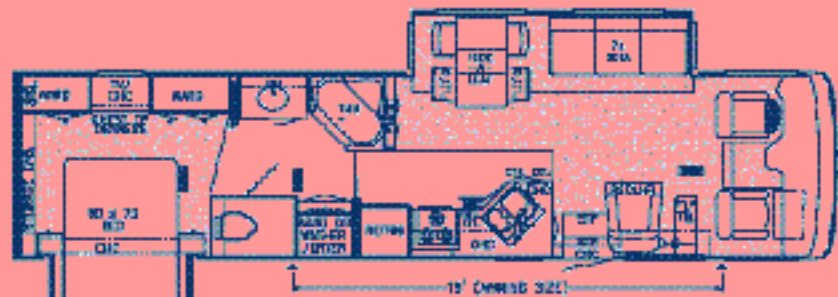
## model MACA 3778

approx. overall length	37' 11"	sewage	50
width	100"	water	75
approx. overall height	12' 1"	LP	32
interior width	94"	furnace	42,000
interior height	78"	water heater	10
grey	50		

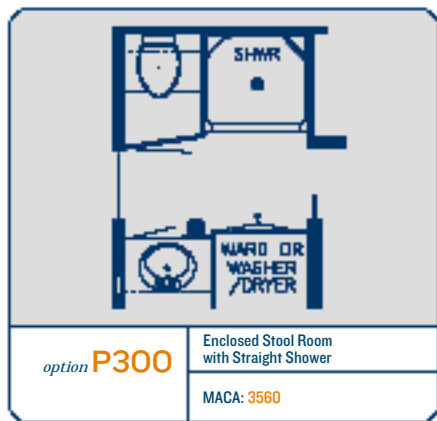
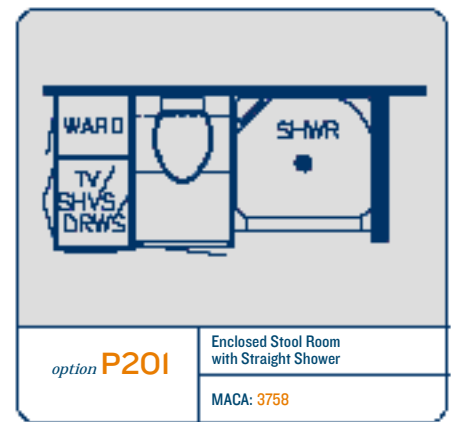
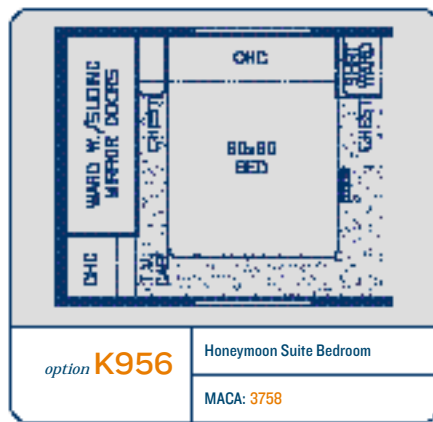
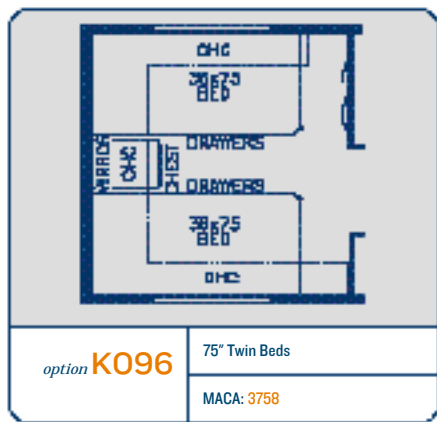


## model MACA 3781

approx. overall length	37' 11"	sewage	50
width	100"	water	75
approx. overall height	12' 1"	LP	32
interior width	94"	furnace	42,000
interior height	78"	water heater	10
grey	50		



# Floorplan Options: 2002 Mountain Aire Class A



## Chassis Specifications: Mountain Aire Diesel Pusher/Class A

	Model	Engine HP	Axle Ratio	Fuel Cap.	Wheel Base	Front GAWR	Rear GAWR	GVWR	GCWR	Approx. UVW	Approx. NCC
Mountain Aire DP Freightliner Chassis	2002MADP3953	370	4.63	100	264	13,880	19,000	32,880	42,880	25,906	6,974
	2002MADP3954	370	4.63	100	264	13,880	19,000	32,880	42,880	25,712	7,168
	2002MADP4055	370	4.63	150	276	13,880	19,000	32,880	42,880	25,806	7,074
	2002MADP4064	370	4.63	150	276	13,880	19,000	32,880	42,880	25,875	7,005
	2002MADP4094	370	4.63	150	276	13,880	19,000	32,880	42,880	25,962	6,918
	2002MADP4095	370	4.63	150	276	13,880	19,000	32,880	42,880	26,072	6,808
	2002MADP4096	370	4.63	150	276	13,880	19,000	32,880	42,880	25,905	6,974
Mountain Aire DP Spartan Chassis	2002MADP3953	370	4.63	100	264	13,700	19,000	32,700	42,700	26,325	6,375
	2002MADP3954	370	4.63	100	264	13,700	19,000	32,700	42,700	26,212	6,488
	2002MADP4055	370	4.63	150	276	13,700	19,000	32,700	42,700	26,325	6,375
	2002MADP4064	370	4.63	150	276	13,700	19,000	32,700	42,700	26,375	6,325
	2002MADP4094	370	4.63	150	276	13,700	19,000	32,700	42,700	26,248	6,414
	2002MADP4095	370	4.63	150	276	13,700	19,000	32,700	42,700	26,335	6,365
	2002MADP4096	370	4.63	150	276	13,700	19,000	32,700	42,700	26,425	6,275
Mountain Aire CA Workhorse Chassis	2002MACA3357	340	5.38	75	208	8,000	14,500	22,000	26,000	17,839	4,161
	2002MACA3560	340	5.38	75	220	8,000	14,500	22,000	26,000	18,330	3,670
	2002MACA3566	340	5.38	75	220	8,000	14,500	22,000	26,000	18,250	3,750
	2002MACA3758	340	5.38	75	240	8,000	14,500	22,000	26,000	18,470	3,530
	2002MACA3776	340	5.38	75	240	8,000	14,500	22,000	26,000	18,827	3,173
	2002MACA3778	340	5.38	75	240	8,000	14,500	22,000	26,000	18,820	3,180
	2002MACA3781	340	5.38	75	240	8,000	14,500	22,000	26,000	18,745	3,255

\*Lengths, heights, widths and dry weights are approximate. Weight will vary based on optional equipment added to the above base weight.

## Standard Features

2002 Mountain Aire Diesel Pusher



### motorized chassis features

- Cruise Control
- Polished Aluminum Wheels

### air conditioning & heating

- Two 13,500 BTU Penguin® Central Air Conditioners
- LP Leak Detector

### appliances & accessories

- 10-Gallon Gas/Electric Water Heater (direct spark ignition)
- 30" Convection Microwave
- 27" Color TV in Dash Overhead
- Color TV in Bedroom
- 3-Burner Recessed Cooktop (electronic ignition)
- Air Horns
- AM/FM Stereo in Dash with Combination Rear View Color Monitor System
- Cable TV Connection with RG6 Coax
- CB Antenna
- Dometic® 1062 Refrigerator with Icemaker (10 cu. ft.)
- Remote 8-Disc CD Changer for Dash Radio
- TV Antenna with Power Booster (one exterior and two interior jacks)
- VCR
- Washer and Dryer Prep for Compact Washer/Dryer

### cabinets & furniture

- Oak Hardwood Cabinets with Raised Panel Double Arched Doors
- Flexsteel® Leather/Vinyl Front Seats with 8-Way Power Lumbar
- Flexsteel® Swivel Rocker Recliner with Adjustable Headrest

- Corian® Countertop in Bathroom with Porcelain Lavatory
- Corian® Countertop in Kitchen with Color-Coordinated Edge and Acrylic Sink
- Drawers with Metal Guides
- Hidden Leaf Dinette Table with Two Fixed Chairs and Two Folding Chairs

### electrical features

- Two 45-Amp Converters
- Four 6-Volt Batteries
- Battery Disconnect (for house batteries)
- 8.0 PowerTech Diesel Quiet Series Generator on Slides with Automatic Changeover
- 5-Watt Solar Panel to Charge Chassis Battery
- 50-Amp Electrical Service with Flexible Cord
- Daytime Headlight System
- Driving Lights
- Emergency Engine Start Switch
- Exterior Security Lights (one installed on each side)
- Interior Courtesy Lights
- Lights in Exterior Storage Compartments
- Lights in Wardrobes
- Recessed Docking Lights

### exterior features

- Brite-Tek Roof with 7mm Decking
- Convex Exterior Chrome Mirrors with Remote Control and Defrost
- Fully Painted Exterior Graphics with Clear Coat Finish
- Gel-Coated Fiberglass Exterior Sides
- Hitch for Towing Car, with Two Extra 14-Gauge Wires for Customer Use (class-3, 5000# rating)

- Hydraulic Leveling Jacks with Automatic Control

### interior features

- Simulated Plank Floor in Kitchen and Bathroom Areas
- Luxurious Pillow Top Mattress
- Padded Vinyl Ceiling
- Quilted Bedspread with Pillow Shams, Matching Bed Skirt and Accent Pillow

### plumbing/bath features

- Automatic Rewind Water Hose Reel
- Exterior Convenience Wash Station (hot/cold water, soap and towel dispenser)
- Fiberglass Tub/Shower with Glass Shower Door
- Monitor Panel
- Sealand 500+ China Stool
- Sewage Holding Tank Rinse
- Water Filter with Drink Dispenser at Kitchen Sink
- Water Heater Bypass System

### construction features

- Aluminum Frame Sidewalls and Roof Construction, 16" On Center

### windows, awnings & vents

- Automatic Double Entrance Doorstep
- Fan-tastic Vent with Rain Sensor in Bathroom
- Fan-tastic Vent with Rain Sensor in Kitchen Area
- A&E 9000 Side Awning
- Driver's Side Power Window
- Skylight in Bathroom with Soft Shade (located above tub/shower)

## Optional Features

2002 Mountain Aire Diesel Pusher



### appliances & accessories

- Compact Washer/Dryer [185 lbs.]
- Navigation System (displayed onto rear view monitor screen) [8 lbs.]
- U-Line Icemaker in lieu of Refrigerator Icemaker (available on 4096, 4095) [52 lbs.]

### cabinets & furniture

- Cherry Hardwood Cabinets
- Frosted Maple Hardwood Cabinets
- Pecan-Maple Hardwood Cabinets
- Under-Mount Corian® Sinks in Kitchen and Bathroom [25 lbs.]

### electrical features

- Roof-Mounted Spot Light [3 lbs.]
- Trace® 2,000-Watt Inverter [50 lbs.]

### interior features

- Ceramic Floor Tile in Bathroom and Kitchen Area [110 lbs.]
- Hardwood Lambrequin Window Treatment in Living Area [30 lbs.]

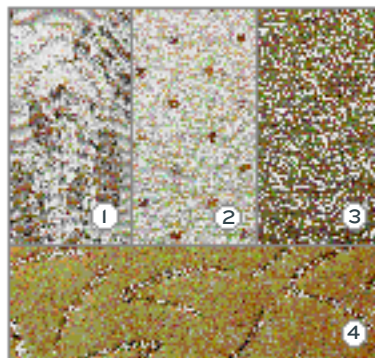


[www.newmarcorp.com](http://www.newmarcorp.com)

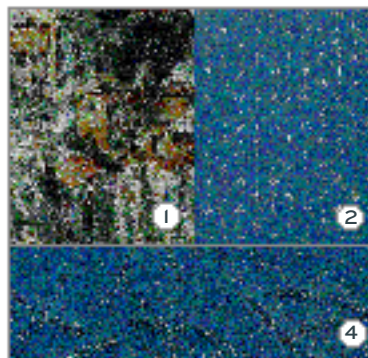
Visit [www.newmarcorp.com](http://www.newmarcorp.com) for a complete list of all available options and swatches.

## Swatches

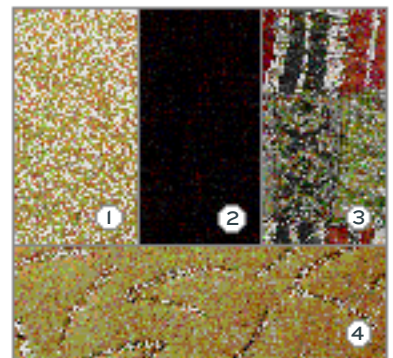
Color Details



Italian Straw



Caspian Blue

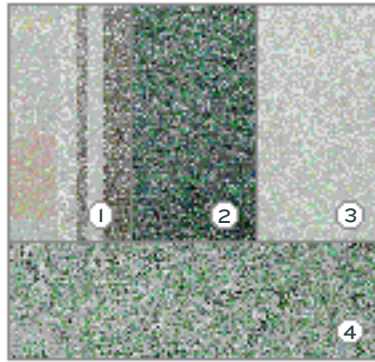


Marrakesh Red

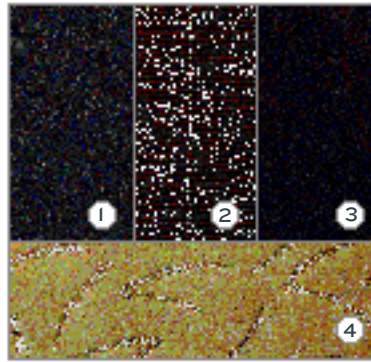
1.Sofa 2.Accent 1 3.Accent 2 4.Carpet  
See dealer swatch samples for truer colors and fabric locations

# Swatches

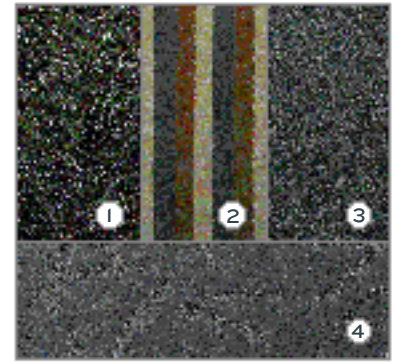
## Color Details



Sea Pearl Green



Aubergine



Phantom Grey

1.Sofa 2.Accent 1 3.Accent 2 4.Carpet

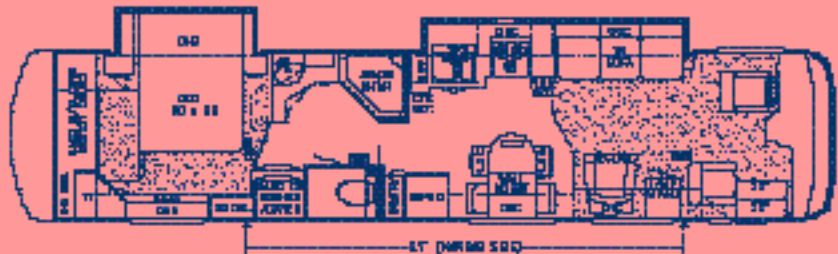
See dealer swatch samples for truer colors and fabric locations

## Specifications: 2002 Mountain Aire Diesel Pusher



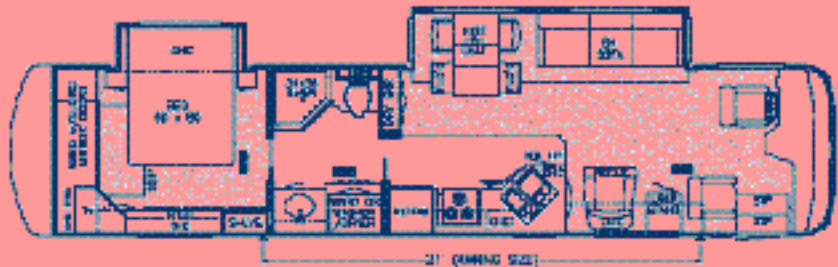
### model MADP 3953

approx. overall length	39' 8"	sewage	45
width	100"	water	105
approx. overall height	12' 0"	LP	32
interior width	94"	furnace	42,000
interior height	78"	water heater	10
grey	65		



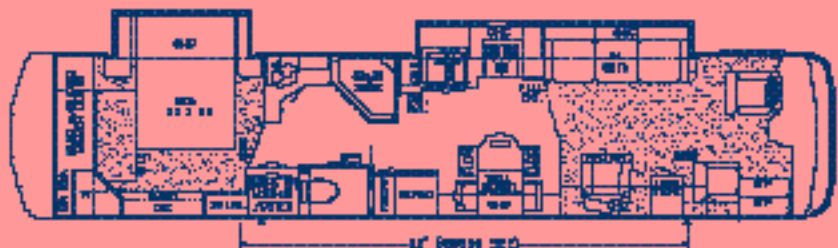
### model MADP 3954

approx. overall length	39' 8"	sewage	45
width	100"	water	105
approx. overall height	12' 0"	LP	32
interior width	94"	furnace	42,000
interior height	78"	water heater	10
grey	65		



### model MADP 4055

approx. overall length	40' 8"	sewage	45
width	100"	water	105
approx. overall height	12' 0"	LP	32
interior width	94"	furnace	42,000
interior height	78"	water heater	10
grey	65		

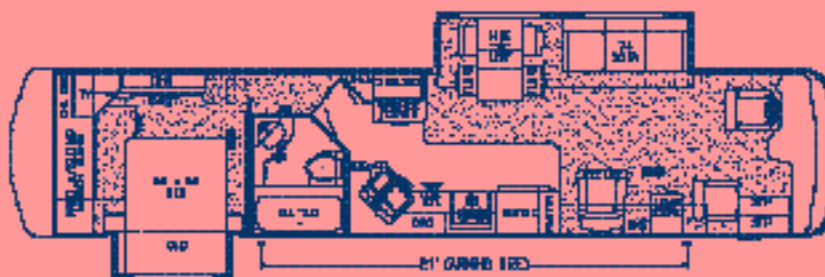


# Specifications: 2002 Mountain Aire Diesel Pusher



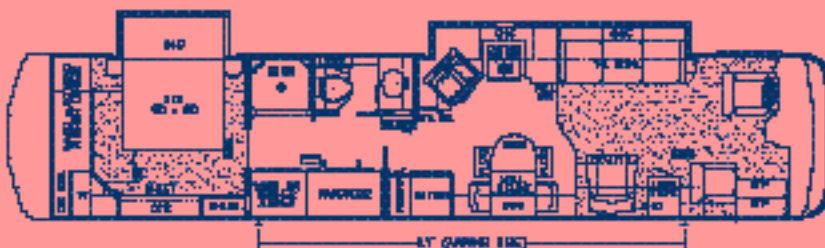
## model MADP 4064

approx. overall length	40' 8"	sewage	45
width	100"	water	105
approx. overall height	12' 0"	LP	32
interior width	94"	furnace	42,000
interior height	78"	water heater	10
grey	65		



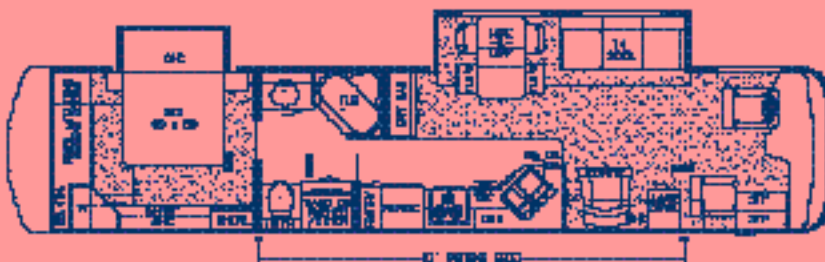
## model MADP 4094

approx. overall length	40' 8"	sewage	45
width	100"	water	105
approx. overall height	12' 0"	LP	32
interior width	94"	furnace	42,000
interior height	78"	water heater	10
grey	65		



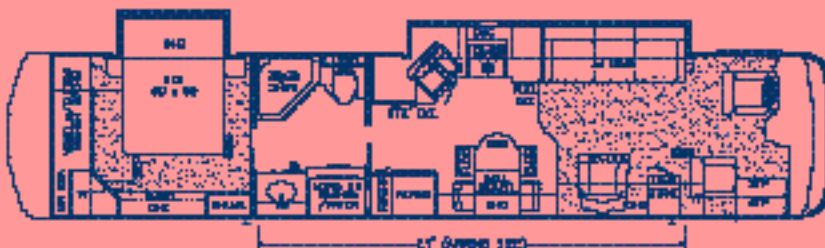
## model MADP 4095

approx. overall length	40' 8"	sewage	45
width	100"	water	105
approx. overall height	12' 0"	LP	32
interior width	94"	furnace	42,000
interior height	78"	water heater	10
grey	65		



## model MADP 4096

approx. overall length	40' 8"	sewage	45
width	100"	water	105
approx. overall height	12' 0"	LP	32
interior width	94"	furnace	42,000
interior height	78"	water heater	10
grey	65		



# Floorplan Options: 2002 Mountain Aire Diesel Pusher

<i>option</i> <b>K110</b>	Entertainment Center 71" Desk in lieu of Recliner and Lamp Stand
MADP: 4064,4095,4096, 4055	

<i>option</i> <b>K211</b>	Dry Bar in lieu of Washer/Dryer Cabinet
MADP: 4064	

<i>option</i> <b>K911</b>	L-Sofa 66" Leather with Incliner
MADP: 3954, 4055, 4064, 4095, 4096	

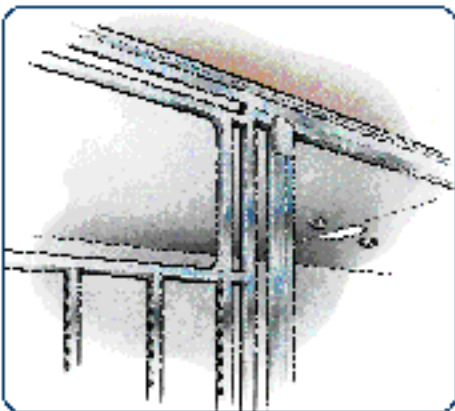
<i>option</i> <b>P080</b>	Enclosed Stool Room with Straight Shower
MADP: 3954	

<i>option</i> <b>P190</b>	Enclosed Stool Room
MADP: 4095	

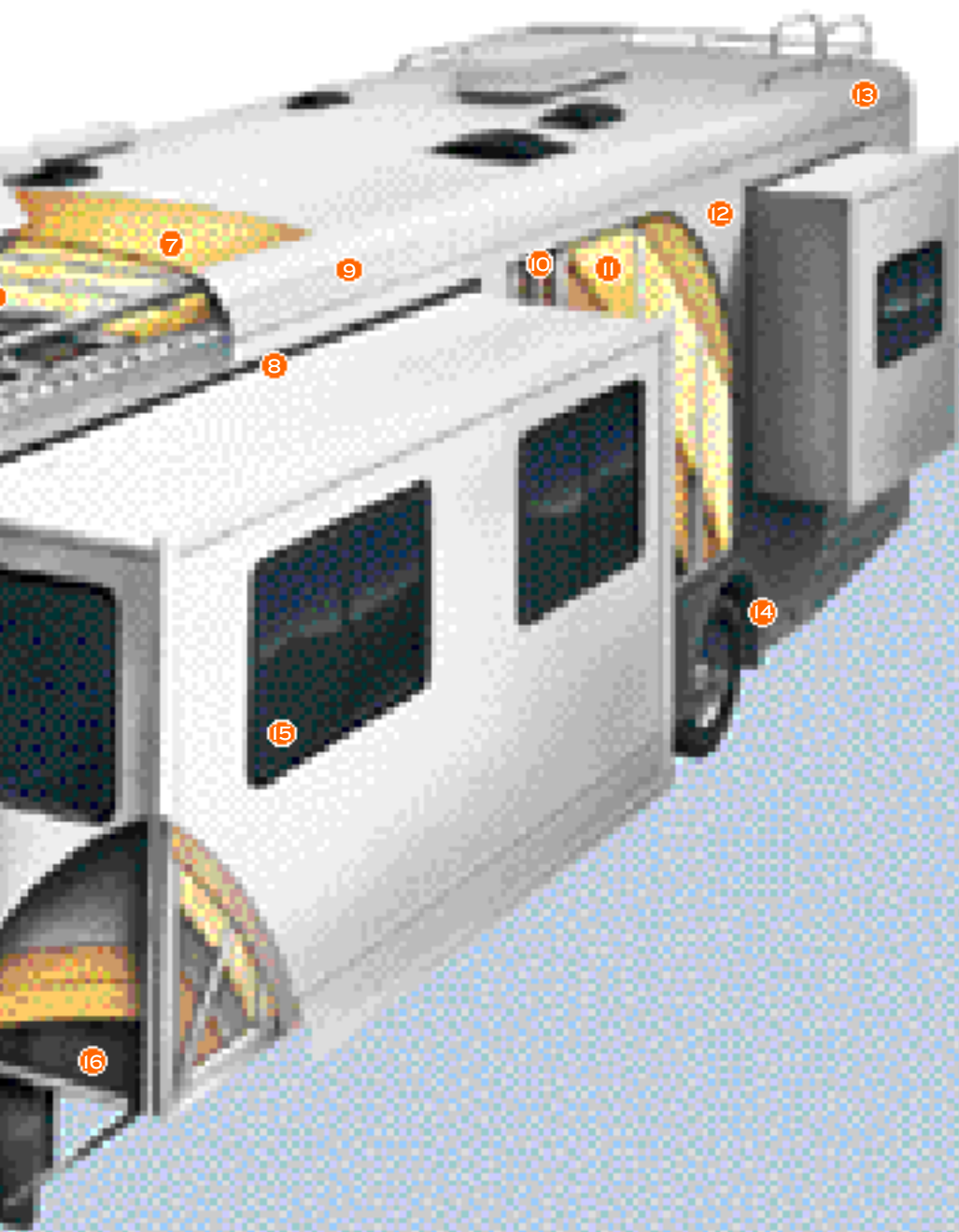
<i>option</i> <b>P200</b>	Enclosed Stool Room with Straight Shower
MADP: 4096	

# Typical Construction Features

For construction representation purposes only. Models may differ from what is pictured.



*We prefer sidewall framing 16 inches on center with aluminum studs. Why? Because this construction provides room for more insulation and allows wall outlets to be positioned like those in your home. In addition, this sidewall doesn't depend on the lamination process for its strength.*



1. Stylish one-piece fiberglass front cap
2. Welded aluminum crowned roof structure with 16" on-center framing
3. True central air conditioning
  - Insulated ducted distribution and return
4. 1" tubular aluminum rafter with full joint weld
5. Exclusively designed slideout header for added strength
6. Fiberglass batten insulation
7. Brite-Tek or fiberglass roof
8. Exclusive slideout roof dam channeling water run off
9. Aluminum or fiberglass wrap
  - Additional aluminum reinforced extrusion connecting sidewall to roof over most slideouts
10. 1.5" C-channel aluminum studs with punched holes allows for:
  - Ventilation
  - Wiring to run through the sidewalls for convenient receptacles
  - Reduced weight
  - Increased strength of the stud
11. Aluminum sidewall structure with 16" on-center framing
12. Composite one-piece gel coat exterior sidewall
13. Stylish one-piece fiberglass rear cap
14. Molded wheelwell liners in most units
15. Tinted safety glass
16. Electric rack and pinion slideout
  - Flush floor slide
  - Automotive-style double bulb seal
17. Plush carpet
18. Carpet padding
19. 5/8" floor decking
20. Fiberglass batten insulation
21. 2" x 3" wood stringer
22. Fiberglass batten insulation
23. Kraft paper (vapor barrier)
24. 5/8" bead foam
25. Plywood interior wall board
26. Welded interlocking top and bottom rail to sidewall stud

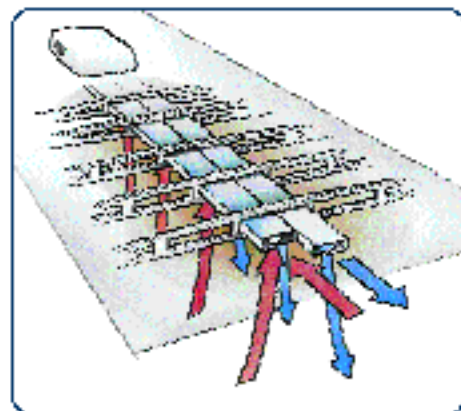
Construction Features

1-26

## Beneath the Surface

At Newmar, our relentless pursuit of quality is a source of great pride. That's why we're not afraid to reveal what we're really made of. When you look below the surface you can see our construction is unlike any other. We don't take short cuts, we construct. Our units are framed like the framing in your home. No matter which model you buy, each Newmar motorhome is assembled on the same production line, built with the same high standards and care. Newmar Quality: A Way of Life, and we mean that from the inside out.

*Because Newmar frames its units like the framing in your home, we can provide true central air conditioning. Vents located throughout the coach deliver cool air and return warm air; allowing you to close the door to a room and still enjoy total comfort.*



## Delivering on Our Promises

The Newmar warranty is as straightforward and honest as our philosophy—build an excellent product and stand behind it all the way. We take pride in the fact that our 36-month or 36,000-mile, bumper-to-bumper limited warranty is the best in the industry. Being the best has many advantages. Not only do our customers go home with confidence and peace of mind, they go home with a warranty that is easy to read and understand, with no hidden fine print or confusing language.

At Newmar, we engineer quality into everything we build and require the same high standards of every component we include in our products. So, when you compare warranties, check the fine print. We think you will find our warranty amazingly simple and surprisingly complete...just the way our customers want it.

Exacting quality, simple language, and products you can trust and enjoy. That is the Newmar promise.

\*Warranty does not cover tires, batteries or chassis. The chassis is covered by the individual manufacturer's warranty.



Newmar Quality: A Way of Life

NEWMAR CORPORATION  
355 N DELAWARE ST  
PO BOX 30  
NAPPANEE IN 46550-0030  
219-773-7791 Fax 219-773-2895  
[www.newmarcorp.com](http://www.newmarcorp.com)

Don't forget to check out the Newmar Kountry Klub. All you need for eligibility is to be a proud owner of any of the fine Newmar recreational vehicles.

We invite you to visit our state-of-the-art production facility in Nappanee, Indiana. Plant tours are offered at 10:00 a.m. and 1:00 p.m., Monday through Friday.

visit us at:



[www.newmarcorp.com](http://www.newmarcorp.com)

NEWMAR 2002

*official Newmar dealer*

Some features shown in our literature are optional. Colors and finishes are photographic representations and may appear differently when viewing actual materials. Prices, specifications and floorplans are subject to change at Newmar's discretion without prior written notice or obligation. Please see your dealer for actual samples and specifications.

©2001 Newmar Corporation. Printed in the U.S.A. (6/01)