

2004 AMERICAN STAR
FIFTH WHEEL BY NEWMAR



2004 AMERICAN STAR

FIFTH WHEEL BY NEWMAR

DESTINATION:

Summer, Smoky Mountains



NEWMARCORP.COM

Such wild, awesome beauty greeted us around every bend!



Every destination—not to mention each stop along the way—seems a place of magic when your travel companion is an American Star Fifth Wheel. It's all about comfort. And American Star has it to spare, beginning with the value it represents. Who would have thought that a coach with such high-end features as a huge pass-through storage area and truly sophisticated interior styling could be so budget-friendly? Well, anyone who knows Newmar's reputation for smart design and cost-efficient manufacturing, that's who! Now, isn't it time you experienced an American Star?





29CEBK/Blue Spray



29CEBK/Blue Spray

B

- A. Cabinets above the sink are recessed, giving you more room to maneuver when washing dishes or preparing food.
- B. Stand tall: Our new raised roof eliminates the need for steps and increases ceiling height to 6'6".
- C. The roomy, accommodating booth dinette makes a pleasant setting for meals, conversation or gaming.
- D. Spacious, easy-cleaning laminate countertops simplify meal preparation.



31RLRE/Linen Beige

C



32RLKS/Woodrose

D

JUNE 10 ~

We learned at the visitors center that it was the Cherokees who named these mountains. They called them "the place of blue smoke."





29CEBK/Blue Spray



B

31RLRE/Linen Beige

- A. Striking window treatments with day/night shades grace the living room.
- B. A slideout opens the living area, making it much more accessible and giving you plenty of room to stretch out and relax.
- C. Pack everything you want: The unobstructed pass-through bay provides maximum storage space without sacrificing frame strength.
- D. The convenience of home is yours with this bedroom vanity mirror.



C



D

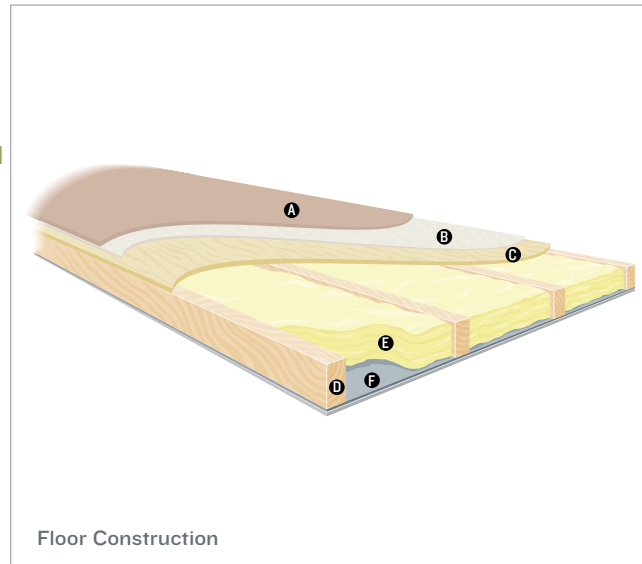
31RLRE/Linen Beige

NEWMAR'S FREEDOM WARRANTY™

Your American Star Fifth Wheel is built to take you as far as your road rolls on...for as long as you roll on with it. Because there's more than enough solid engineering here to ensure years of travel pleasure.

American Star is assembled on the same production line, to the same exacting standards and with the same meticulous care, as all Newmar coaches. It also embodies Newmar's long history of product innovation and industry "firsts." For us, it's a matter of pride. And tradition. Of taking personal responsibility and building a product that each of us, ourselves, would want to own.

As proof of our commitment, we back every RV we make with a two-year, bumper-to-bumper limited warranty: The Newmar Freedom Warranty. Ask your dealer for details. You're sure to find coverage this comprehensive a truly liberating experience.

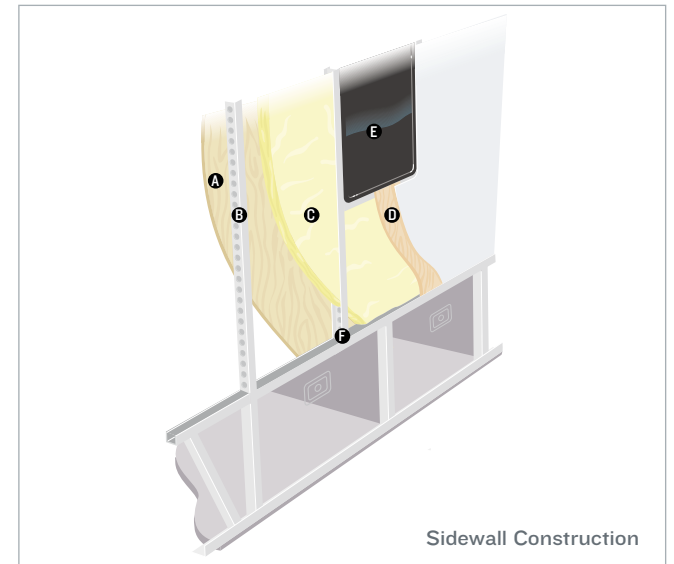


Floor Construction

- A. Plush carpet*
- B. Carpet padding
- C. 5/8" floor decking

- D. 2" x 3" wood stringer
- E. Fiberglass batten insulation
- F. Polyethylene moisture barrier

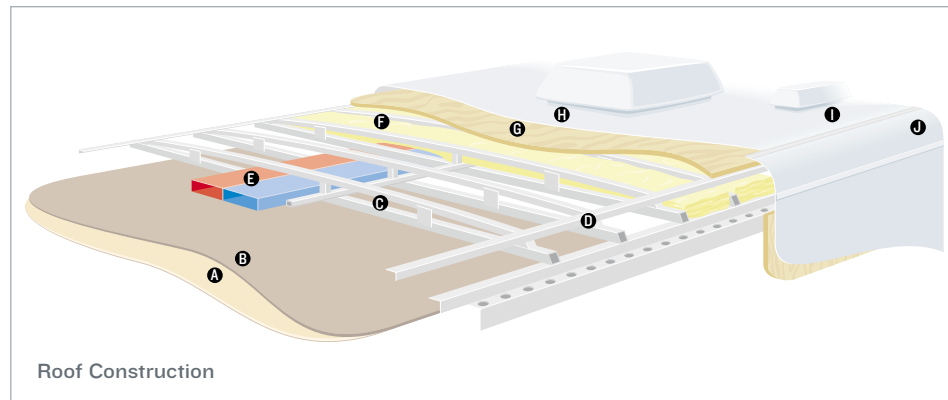
*Ceramic tile, simulated floor and simulated tile options also available.



Sidewall Construction

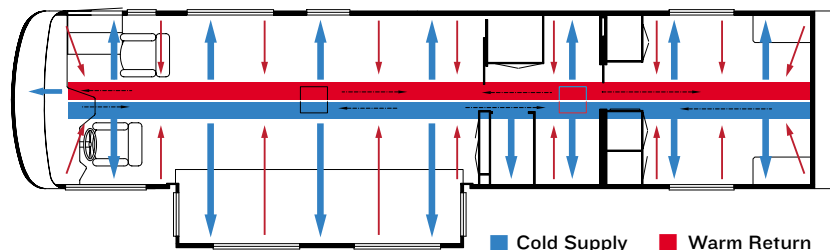
- A. Plywood interior wall board
- B. 1.5" C-channel aluminum studs with punched holes
- C. Fiberglass insulation

- D. Composite one-piece exterior sidewall (gel coat optional)
- E. Framed windows
- F. Aluminum sidewall structure with 16" on-center framing



Roof Construction

- A. Vinyl overlay
- B. 3/16" panel
- C. 1" tubular aluminum truss rafter with full joint weld
- D. Welded aluminum crowned roof structure with 16" on-center framing
- E. True Central Air Conditioning—insulated ducted distribution and return
- F. Fiberglass batten insulation
- G. 7mm wood decking (optional)
- H. Aluminum or optional Brite-Tek roof
- I. One-piece fiberglass caps
- J. Aluminum wrap

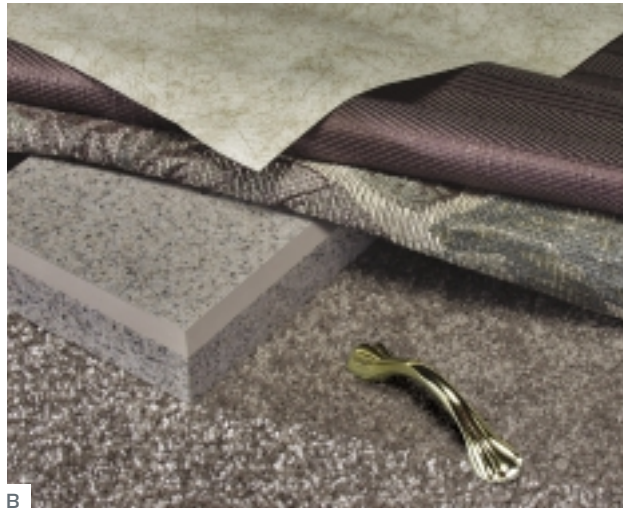


■ Cold Supply ■ Warm Return

TRUE CENTRAL AIR: Newmar's True Central Air System—standard with every Newmar RV—is just like those found in most site-built homes. It's actually two separate, fully ducted systems: one to distribute incoming cool air, the other to quickly and effectively remove warm air from every living area.



A



B



C

INTERIOR COLORS

A. Blue Spray
B. Woodrose

C. Linen Beige

EXTERIOR COLORS

A. Blue Spray

B. Smoke-Beige

Painted skirt is optional on all American Star Fifth Wheels.



A



B

NEWMARCORP.COM

Here you'll discover the latest model specifications, floor plans and options, as well as information on who we are, how we work and what we believe in.

Wonder where our next road will lead?

THE NEWMAR KOUNTRY KLUB

As a Newmar owner, you qualify for membership in the Newmar Kountry Klub. Join your local chapter, and just look at the perks you'll enjoy: friendship, fun and adventure with other Newmar owners • rallies and caravans • special RV show events • discounts on RV services • a free monthly Klub magazine • Klub merchandise. And that's just for starters.

Join today! Call 877-639-5582, toll-free, or visit the Klub section of newmarcorp.com.

THE NEWMAR FACTORY TOUR

We'd love to have you visit our state-of-the-art production facility in Nappanee, Indiana. For details, including tour days and times, please call 574-773-7791.

NEWMAR CORPORATION
355 N DELAWARE ST
PO BOX 30
NAPPANEE IN 46550-0030
574-773-7791 Fax 574-773-2895
www.newmarcorp.com



NEWMAR QUALITY: A WAY OF LIFE

Official Newmar Dealer:

Some features shown in our literature are optional. Colors and finishes are photographic representations. The actual materials may look different. Prices, specifications and floor plans are subject to change at Newmar's discretion without prior written notice or obligation. Please see your dealer for actual samples and specifications. © 2003 Newmar Corporation. Printed in the U.S.A. (05/03)

2004 AMERICAN STAR
FIFTH WHEEL BY NEWMAR



2004 AMERICAN STAR

FIFTH WHEEL BY NEWMAR

DESTINATION:

Summer, Smokey Mountains



NEWMARCORP.COM

SPECIFICATIONS

STANDARD FEATURES

AIR CONDITIONING & HEATING

- Two 30 lb. LP-Gas Bottles with Automatic Regulator
- 13,500-Btu Brisk® Central Air Conditioner
- LP Leak Detector

APPLIANCES & ACCESSORIES

- Six-Gal. Gas/Electric Water Heater with Direct-Spark Ignition
- 22" Microwave
- Three-Burner Range with Oven and Piezzo Ignition
- AM/FM Radio with Cassette
- Bifold Range Cover
- Dometic® 2652 Refrigerator (6 Cu. Ft.)
- Range Hood with Light and Fan
- TV Antenna with Power Booster and Two Interior Jacks

CABINETS & FURNITURE

- Oak Hardwood-Raised Panel Cabinet Doors
- Jackknife Sofa with Throw Pillows
- Lifts on Bed to Access Storage Area
- Queen Bed—60" X 75"
- Booth Dinette

ELECTRICAL FEATURES

- 55-amp Converter
- 12 V Battery
- 30-amp Electrical Service

EXTERIOR FEATURES

- Filon® Fiberglass Exterior Sides
- Gel-Coated Fiberglass End Caps
- Seamless Aluminum Roof

INTERIOR FEATURES

- Mini Blind Window Shades with Lambrequins
- Quilted Bedspread with Reverse Sham and Accent Pillow
- Carpeting in Living Room and Bedroom Areas
- Vinyl Floor in Kitchen, Foyer and Bathroom Areas
- Hardwood/Fabric Fascia on Living Area Slideout
- Vinyl-Covered Ceiling Panels

PLUMBING & BATH FEATURES

- Monitor Panel
- Sewage Holding-Tank Rinse
- Thetford® Aqua Magic IV Stool
- Tub/Shower Surround with Shower Door
- Water-Heater Bypass System
- Demand Water System with Shurflo Pump

CONSTRUCTION FEATURES

- Aluminum-Frame Sidewalls and Roof Construction, 16" On Center
- Roof R-Value Rating: 8
- Sidewall R-Value Rating: 8
- Floor R-Value Rating: 11
- Enclosed Underbelly with Fiberglass Insulation
- R7 Fiberglass Insulation in Sidewalls, Floor and Roof

WINDOWS, AWNINGS & VENTS

- Power Vent in Bathroom with Wall Switch
- Triple Entrance-Door Steps

OPTIONAL FEATURES

TOWABLE CHASSIS FEATURES

- Easy-Lube Equalizers
- Shock Absorbers (2 lb.)
- Spare Tire with Carrier and Cover (90 lb.)
- Electric Over Hydraulic Disc Brakes (10 lb.)

AIR CONDITIONING & HEATING

- 13,500-Btu Penguin® Air Conditioner in Lieu of Standard (5 lb.)
- 15,000-Btu Penguin Air Conditioner in Lieu of Standard (5 lb.)
- 15,000-Btu Brisk Air Conditioner In Lieu of Standard (5 lb.)

APPLIANCES & ACCESSORIES

- Theater System with DVD Player (15 lb.)
- Dometic® 2852 Refrigerator (8 Cu. Ft. 21 lb.)
- Ten-Gal. Gas/Electric Water Heater with Direct-Spark Ignition (10 lb.)
- Two-Piece Washer/Dryer with 50-amp Electrical Service (241 lb.)

CABINETS & FURNITURE

- Maple Cream Cabinets
- Free-Standing Dinette in Lieu of Standard (23 lb.)
- Hide-A-Bed Sofa in Lieu of Standard (62 lb.)

ELECTRICAL FEATURES

- Battery Disconnect Switch
- 400-watt Inverter for Entertainment Center (10 lb.)
- Exterior Security Lights, One Installed on Each Side of Coach (2 lb.)

EXTERIOR FEATURES

- BriteTek® Roof with 7mm Decking (237 lb.)
- Power Front Jacks (10 lb.)
- Stabilizer Jacks, One Pair (40 lb.)
- Snaps for Fifth Wheel Jacks
- Rear Ladder (4 lb.)

INTERIOR FEATURES

- Simulated Plank Floor in Kitchen and Foyer Areas (30 lb.)
- Day/Night Pleated Shades in Living and Bedroom Areas (5 lb.)
- Lined Drapes with Valances
- 12" Marble-Look Floor Tile in Kitchen Area and Main Bathroom (20 lb.)
- Two Sink Covers (2 lb.)

PLUMBING & BATH FEATURES

- Exterior Shower, Located on Off-Door Side

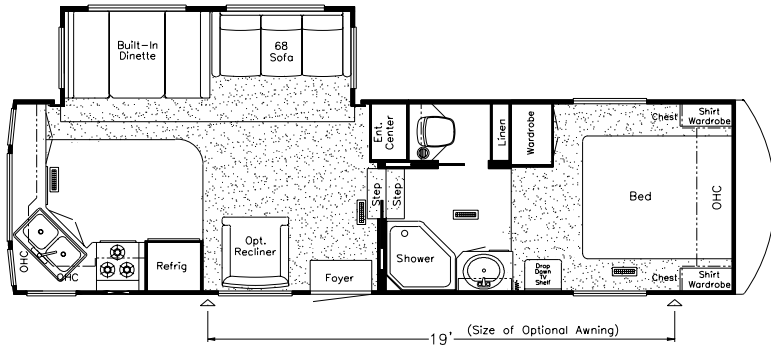
CONSTRUCTION FEATURES

- Polar Pak Insulation, R19 Fiberglass in Roof and Floor (5 lb.)

WINDOWS, AWNINGS & VENTS

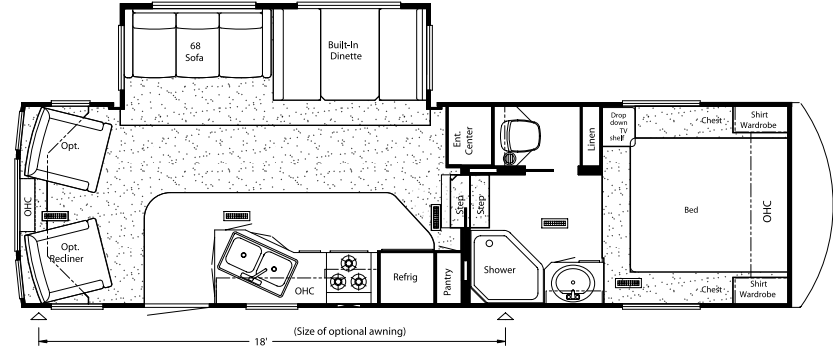
- Create-A-Breeze® Vent with Automatic Lift in Kitchen (5 lb.)
- Double-Pane Tinted Safety-Glass Windows (110 lb.)
- Skylight in Master Bathroom, Located Above Tub/Shower (2 lb.)
- Carefree® Fiesta Side Awning (104 lb.)

FLOOR PLANS



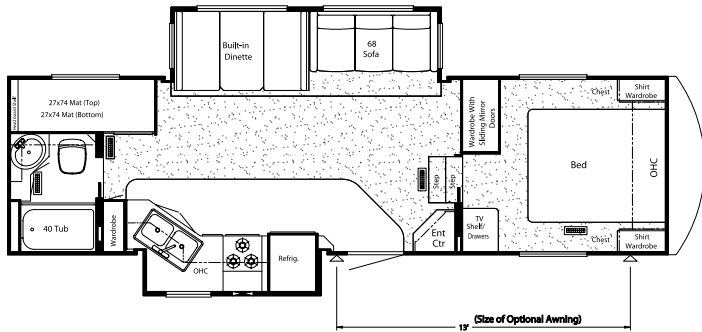
Model Shown: ASFW 29CEBK

Floor Plan Options: K928, K084, M735, M737



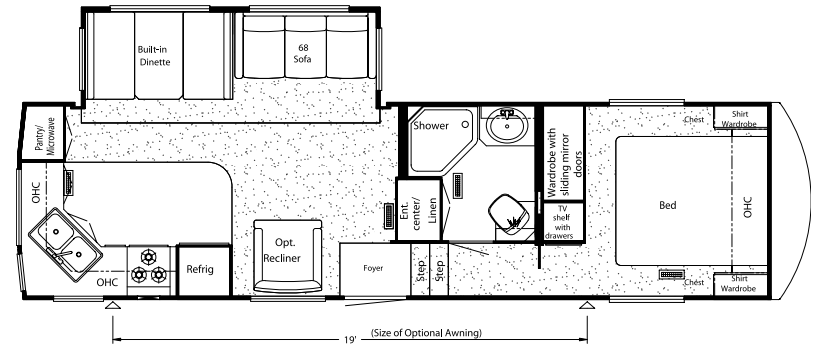
Model Shown: ASFW 29CEBL

Floor Plan Options: K084



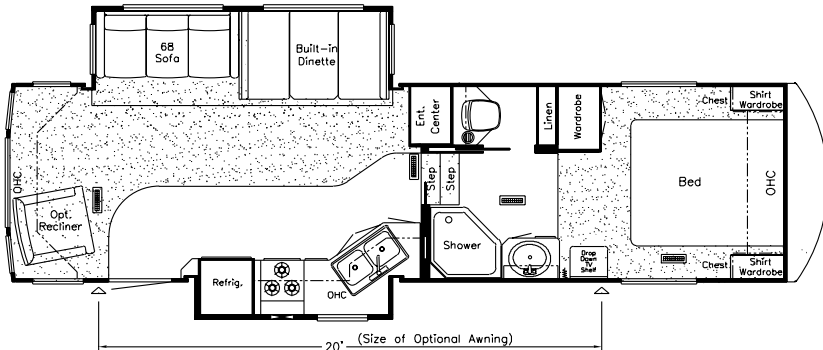
Model Shown: ASFW 29RBKS

Floor Plan Options: K928, K084, MI60, MI62



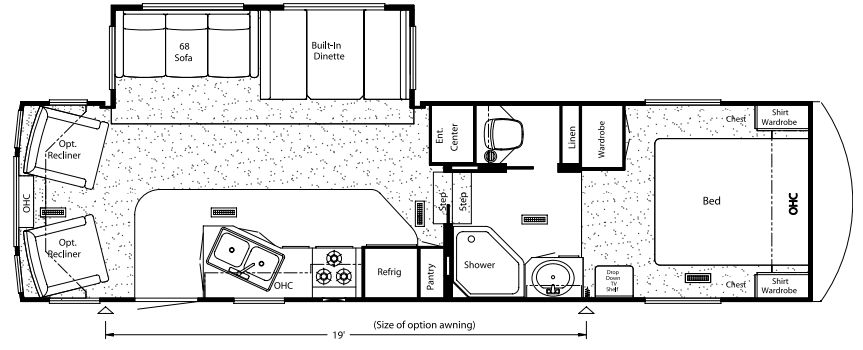
Model Shown: ASFW 30BKCL

Floor Plan Options: K925, K084, M727



Model Shown: ASFW 30KSRE

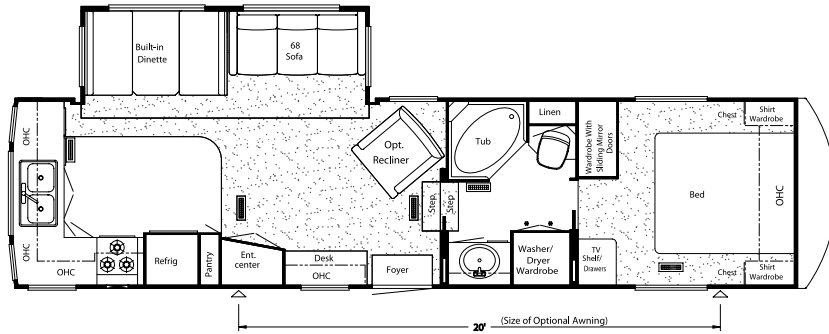
Floor Plan Options: K928, K084, M735, M737



Model Shown: ASFW 31RLRE

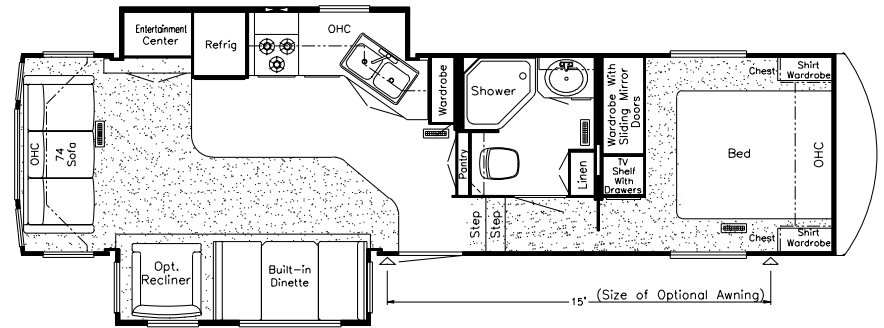
Floor Plan Options: K928, K084, M735, M737

FLOOR PLANS



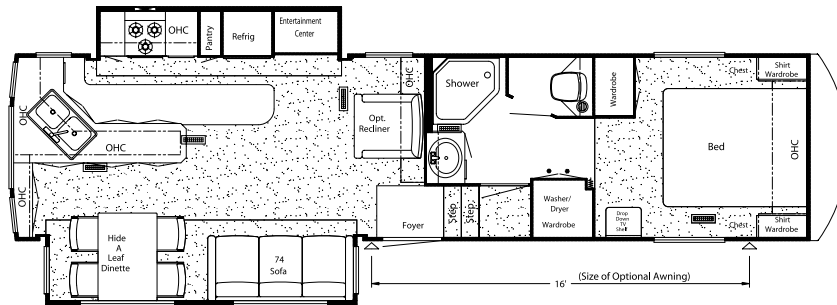
Model Shown: ASFW 32RKWD

Floor Plan Options: K084, K928, MI60, MI62, PI83



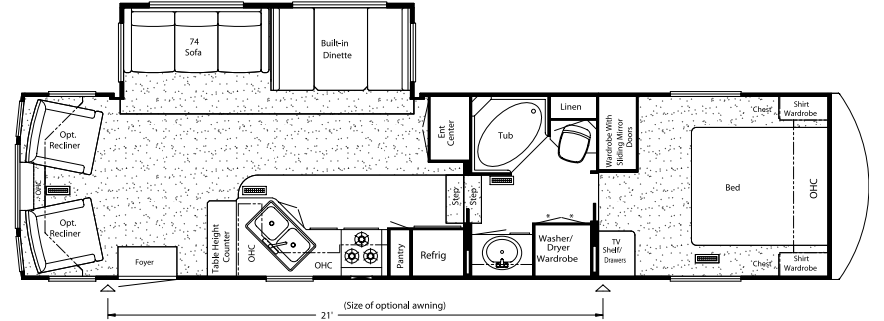
Model Shown: ASFW 32RLKS

Floor Plan Options: K084, K925, M727



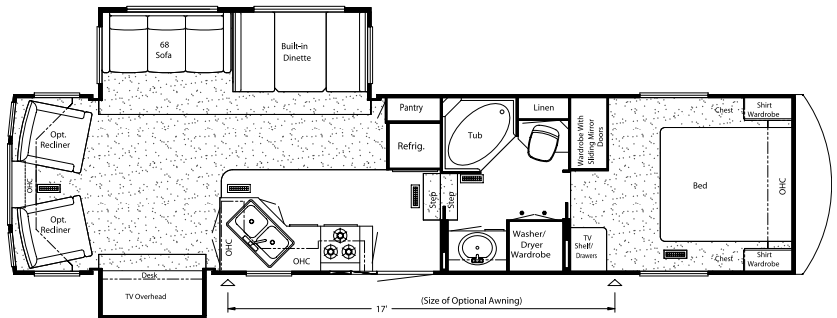
Model Shown: ASFW 33LKSA

Floor Plan Options: K084, K928, MI63, MI64



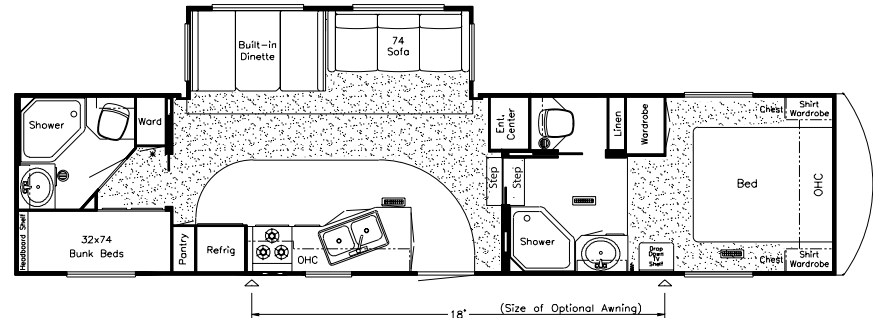
Model Shown: ASFW 34RLCK

Floor Plan Options: K084, K927, M719, M720, PI83



Model Shown: ASFW 34RLES

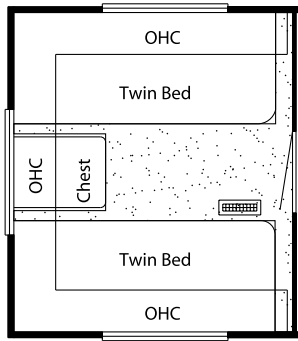
Floor Plan Options: K084, K927, M801, M802, PI84



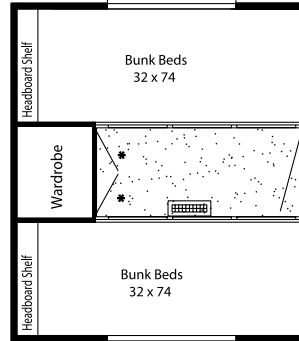
Model Shown: ASFW 35DBDB

Floor Plan Options: K084, K510, K570, K650, K660, K680, K750, K928, M732, M734

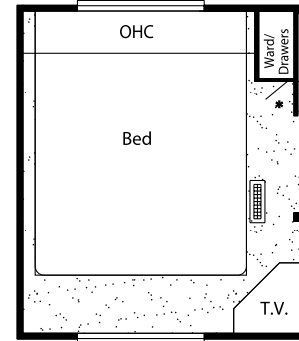
FLOOR PLAN OPTIONS



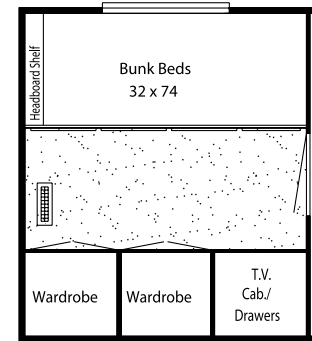
**K510: REAR TWIN BEDS
35DBDB**



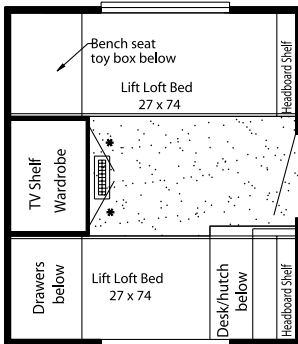
**K570: REAR BUNKHOUSE
35DBDB**



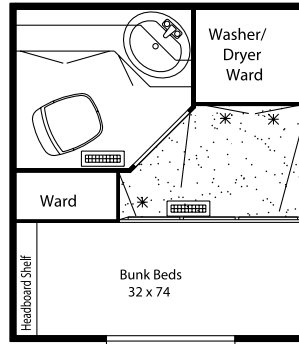
**K650: REAR BEDROOM
35DBDB**



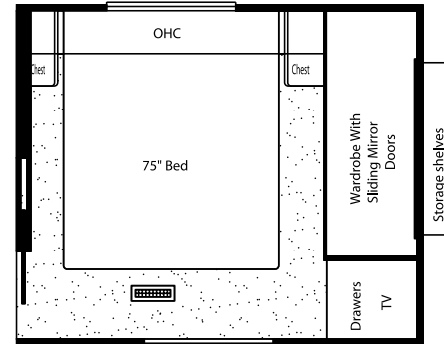
**K660: REAR BUNKHOUSE WARDROBE
35DBDB**



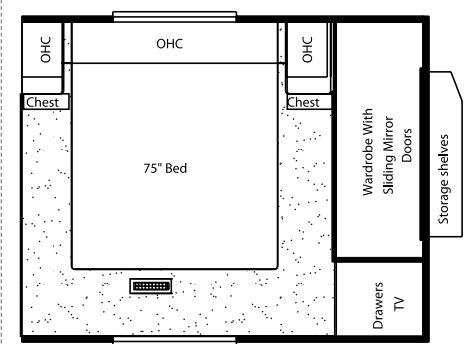
**K680: REAR LOFT
35DBDB**



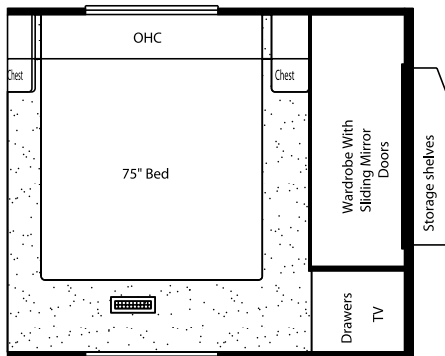
**K750: REAR BED/BATH
35DBDB**



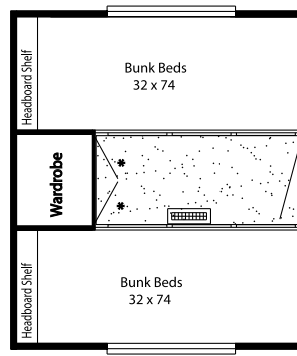
**K925: HONEYMOON SUITE
30BKCL, 32RLKS**



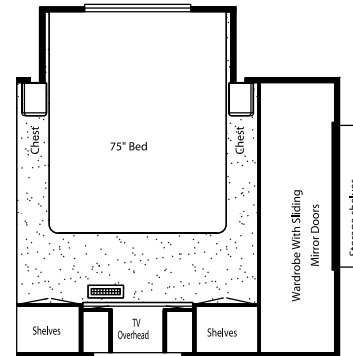
**K927: HONEYMOON SUITE
34RLCK, 34RLES**



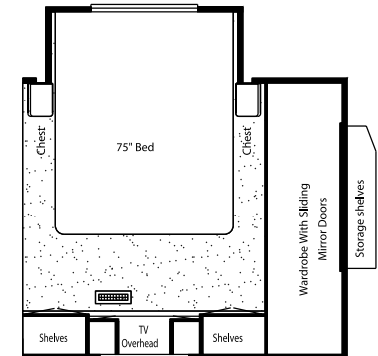
**K928: HONEYMOON SUITE 29CEBK, 29RBKS, 30KSRE,
31RLRE, 32RKWD, 33LKSA, 35DBDB**



**K084: TWIN BEDS 29CEBK, 29CEBL, 29RBKS, 30BKCL,
30KSRE, 31RLRE, 32RKWD, 32RLKS, 33LKSA,
34RLCK, 34RLES, 35DBDB**

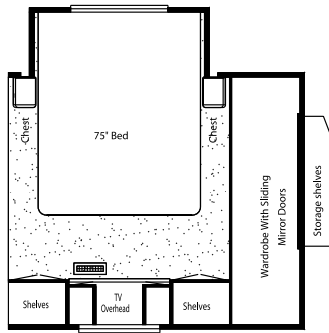


**MI60: CABOVER SLIDEOUT W/ VANITY CENTER
29RBKS, 32RKWD**

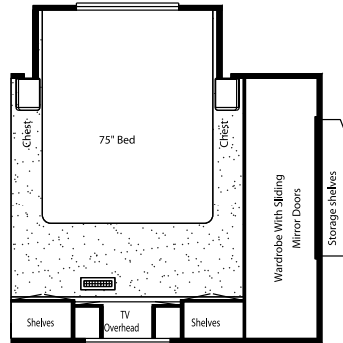


**MI62: CABOVER SLIDEOUT VANITY/DRESSER CENTER
29RBKS, 32RKWD**

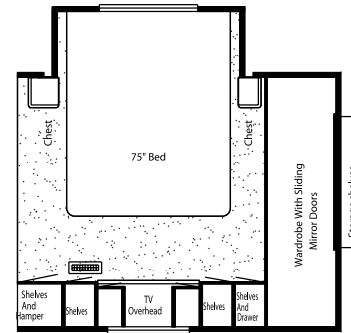
FLOOR PLAN OPTIONS



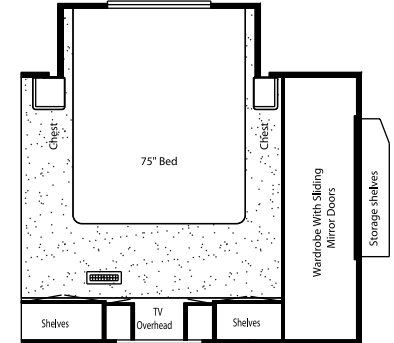
MI63: CABOVER SLIDEOUT WITH VANITY CENTER 33LKSA



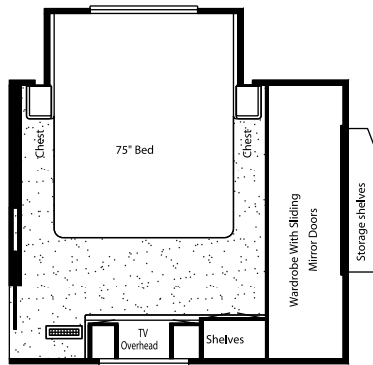
MI64: CABOVER SLIDEOUT VANITY/DRESSER CENTER 33LKSA



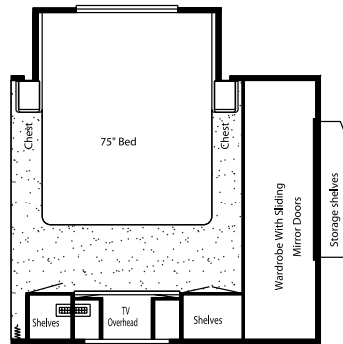
M719: CABOVER SLIDEOUT WITH VANITY CENTER 34RLCK



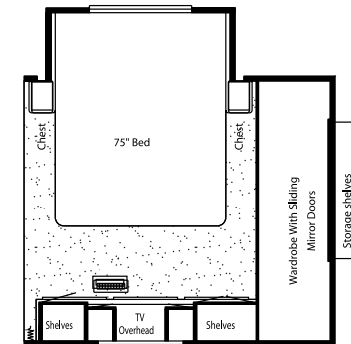
M720: CABOVER SLIDEOUT WITH VANITY OVER DRESSER CENTER 34RLCK



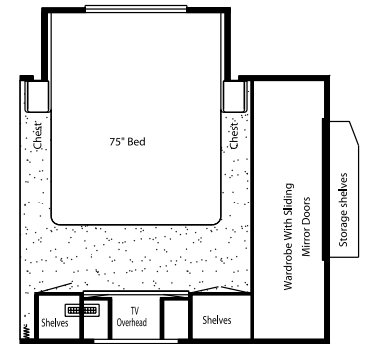
M727: CABOVER SLIDEOUT WITH VANITY/DRESSER CENTER 30BKCL, 32RLKS



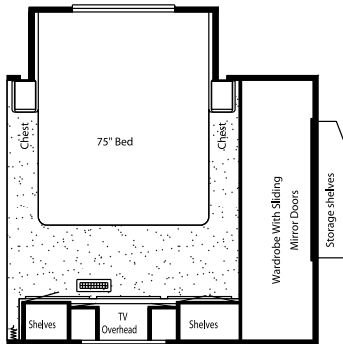
M732: CABOVER SLIDEOUT WITH VANITY CENTER 35DBDB



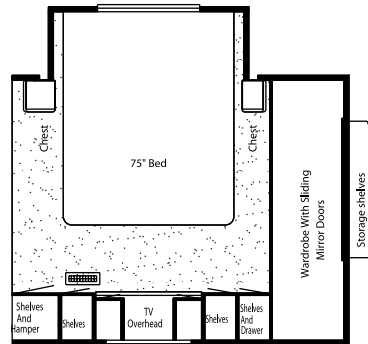
M734: CABOVER SLIDEOUT WITH VANITY OVER DRESSER CENTER 35DBDB



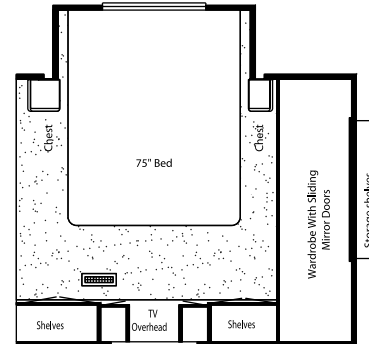
M735: CABOVER SLIDEOUT WITH VANITY CENTER 29CEBK, 30KSRE, 31RLRE



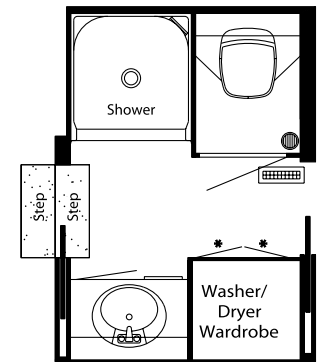
M737: CABOVER SLIDEOUT VANITY/DRESSER CENTER 29CEBK, 30KSRE, 31RLRE



M801: CABOVER SLIDEOUT WITH VANITY CENTER 34RLES

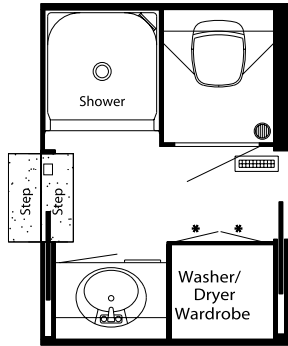


M802: CABOVER SLIDEOUT WITH VANITY/DRESSER CENTER 34RLES



P183: ENCLOSED STOOL WITH SHOWER 32RKWD, 34RLCK

FLOOR PLAN OPTIONS



PI84: ENCLOSED STOOL ROOM WITH STRAIGHT SHOWER
34RLES

FLOOR PLAN SPECIFICATIONS

FLOOR PLAN	TIRE SIZE	GAWR	GVWR	APP. LENGTH	APP. HEIGHT	WIDTH	APP. DRY WEIGHT	APP. HITCH WEIGHT	FRESH WATER	GREY	SEWAGE CAP.	APP. HITCH HEIGHT	HEAT CAP.
ASFW 29CEBK	225/75R15-D	5,080 lb.	11,900 lb.	31' 9"	13'	96"	9,088 lb.	1,636 lb.	42 gal.	42 gal.	42 gal.	46"	35,000 Btu
ASFW 29CEBL	225/75R15-D	5,080 lb.	11,900 lb.	32' 1"	13'	96"	9,105 lb.	1,821 lb.	42 gal.	42 gal.	42 gal.	46"	35,000 Btu
ASFW 29RBKS	225/75R15-D	5,080 lb.	11,900 lb.	31' 6"	13'	96"	9,531 lb.	2,097 lb.	42 gal.	42 gal.	42 gal.	46"	35,000 Btu
ASFW 30BKCL	225/75R15-D	5,080 lb.	11,900 lb.	32' 4"	13'	96"	9,227 lb.	1,845 lb.	42 gal.	42 gal.	42 gal.	46"	35,000 Btu
ASFW 30KSRE	225/75R15-D	5,080 lb.	11,900 lb.	33' 3"	13'	96"	9,373 lb.	1,312 lb.	42 gal.	42 gal.	42 gal.	46"	35,000 Btu
ASFW 31RLRE	225/75R15-D	5,080 lb.	11,900 lb.	33' 8"	13'	96"	9,336 lb.	1,961 lb.	42 gal.	42 gal.	42 gal.	46"	35,000 Btu
ASFW 32RKWD	225/75R15-D	5,080 lb.	11,900 lb.	34' 11"	13'	96"	9,835 lb.	1,869 lb.	42 gal.	42 gal.	42 gal.	46"	35,000 Btu
ASFW 32RLKS	225/75R15-D	5,080 lb.	11,900 lb.	34' 3"	13'	96"	10,136 lb.	2,129 lb.	42 gal.	42 gal.	42 gal.	46"	35,000 Btu
ASFW 33LKSA	235/85R16-E	6,000 lb.	14,000 lb.	36'	13' 1"	96"	10,703 lb.	1,927 lb.	42 gal.	42 gal.	42 gal.	47"	35,000 Btu
ASFW 34RLCK	225/75R15-D	5,080 lb.	11,900 lb.	36' 9"	13'	96"	9,970 lb.	1,994 lb.	42 gal.	42 gal.	42 gal.	46"	35,000 Btu
ASFW 34RLES	235/85R16-E	6,000 lb.	14,000 lb.	36' 9"	13' 1"	96"	10,528 lb.	1,895 lb.	42 gal.	42 gal.	42 gal.	47"	35,000 Btu
ASFW 35DBDB	235/85R16-E	6,000 lb.	14,000 lb.	38'	13' 1"	96"	10,297 lb.	2,059 lb.	42 gal.	42 gal.	84 gal.	47"	35,000 Btu

Wonder where our next road will lead?

THE NEWMAR KOUNTRY KLUB

As a Newmar owner, you qualify for membership in the Newmar Kountry Klub. Join your local chapter, and just look at the perks you'll enjoy: friendship, fun and adventure with other Newmar owners • rallies and caravans • special RV show events • discounts on RV services • a free monthly Klub magazine • Klub merchandise. And that's just for starters.

Join today! Call 877-639-5582, toll-free, or visit the Klub section of newmarcorp.com.

THE NEWMAR FACTORY TOUR

We'd love to have you visit our state-of-the-art production facility in Nappanee, Indiana. For details, including tour days and times, please call 574-773-7791.

NEWMAR CORPORATION
355 N DELAWARE ST
PO BOX 30
NAPPANEE IN 46550-0030
574-773-7791 Fax 574-773-2895
www.newmarcorp.com



NEWMAR QUALITY: A WAY OF LIFE

Official Newmar Dealer:

Some features shown in our literature are optional. Colors and finishes are photographic representations. The actual materials may look different. Prices, specifications and floor plans are subject to change at Newmar's discretion without prior written notice or obligation. Please see your dealer for actual samples and specifications. © 2003 Newmar Corporation. Printed in the U.S.A. (05/03)