

2004 KOUNTRY AIRE  
FIFTH WHEEL BY NEWMAR



# 2004 KOUNTRY AIRE

FIFTH WHEEL BY NEWMAR

DESTINATION:

*Savannah, Georgia*



NEWMARCORP.COM



Even in the calmest setting, a full day of sightseeing can take a lot out of you. What's the best way to replenish body and soul? Settle back in the quiet, refined environment of a Kountry Aire Fifth Wheel. Newmar's thoughtful designers and engineers have seen to your every need, providing comforts that will truly recharge your batteries. You'll feel it immediately in the expansive living areas...the plush seating...and the array of "little" conveniences from kitchen to bathroom to bedroom. Stay at your best wherever you go—with the restful accommodations of a Kountry Aire Fifth Wheel.







36WBKS/Ivy



B

36WBKS/Ivy

- A. You'll appreciate the kitchen's generous cabinets, its island with a flip-up counter extension and the easy-to-clean Corian® countertops throughout.
- B. Stand tall: Our new raised roof eliminates the need for steps and increases ceiling height to 6'6".
- C. The sink covers and the sturdy, flip-up stove-top cover are flush with the countertop to give you more work space.
- D. Pack everything you want: The unobstructed pass-through bay provides maximum storage space without sacrificing frame strength.



C

36WBKS/Ivy



D



MAY 10 ~

Began tour of Historic district today. Started at the Savannah History Museum.  
Never expected to see a genuine cotton gin, but there it was.

A







35BLDS/Ivy



B

35BLDS/Ivy

- A. Plush seating, elegant window treatments with day/night shades and a large slideout area enhance the living room.
- B. The exquisite cabinetry of the entertainment center and its large flat-screen Sony® color TV create a stunning visual focal point.
- C. The ample space provided by this optional pull-out landing area allows the operator to open the entrance door while standing on the porch.
- D. Kountry Aire's dual tandem axles make for a smoother, more stable towing experience, especially in tight cornering maneuvers.



C



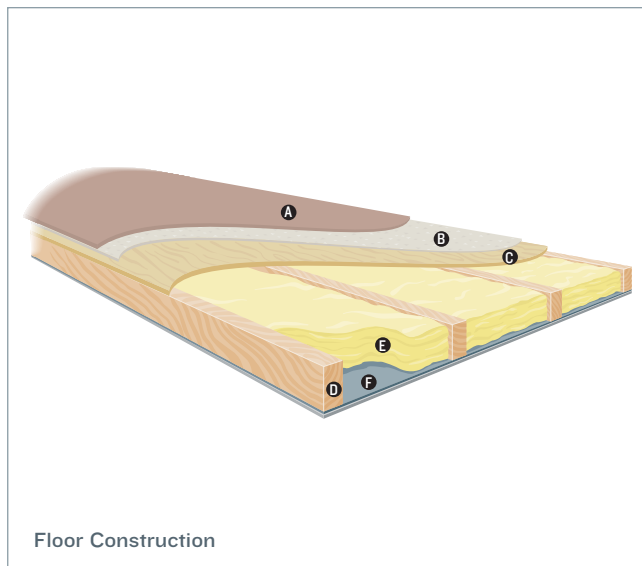
D

# NEWMAR'S FREEDOM WARRANTY™

Your Kountry Aire Fifth Wheel is built to take you as far as your road rolls on...for as long as you roll on with it. Because there's more than enough solid engineering here to ensure years of travel pleasure.

Kountry Aire is assembled on the same production line, to the same exacting standards and with the same meticulous care, as all Newmar coaches. It also embodies Newmar's long history of product innovation and industry "firsts." For us, it's a matter of pride. And tradition. Of taking personal responsibility and building a product that each of us, ourselves, would want to own.

As proof of our commitment, we back every coach we make with a three-year/36,000-mile, bumper-to-bumper limited warranty: The Newmar Freedom Warranty. Ask your dealer for details. You're sure to find coverage this comprehensive a truly liberating experience.

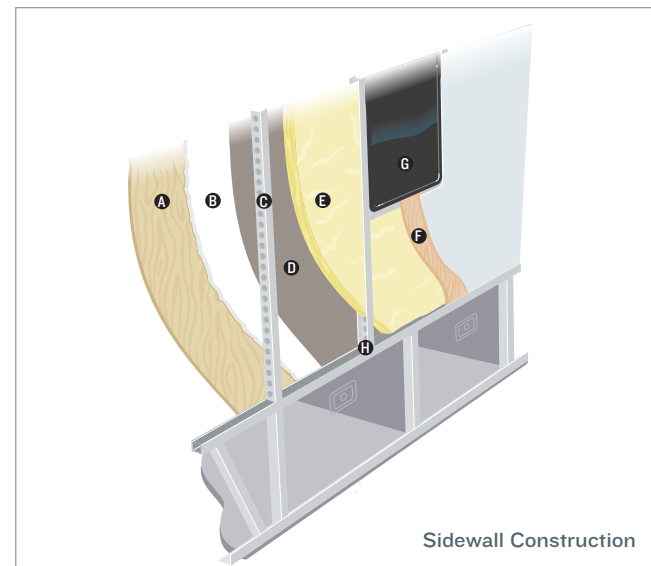


Floor Construction

- A. Plush carpet\*
- B. Carpet padding
- C. 5/8" floor decking

- D. 2" x 3" wood stringer
- E. Fiberglass batten insulation
- F. Polyethylene moisture barrier

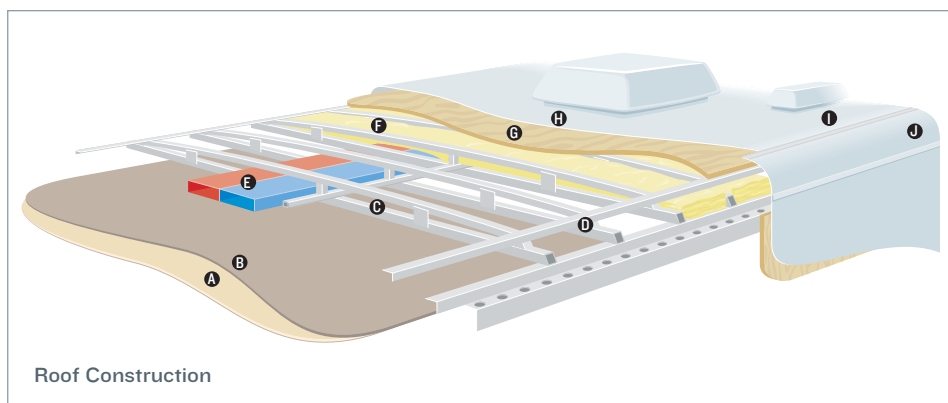
*\*Ceramic tile, simulated floor and simulated tile options also available.*



Sidewall Construction

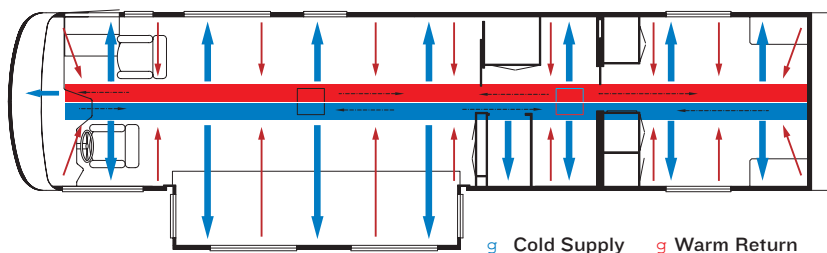
- A. Plywood interior wallboard
- B. 5/8" bead foam
- C. 1.5" C-channel aluminum studs with punched holes
- D. Kraft paper vapor barrier
- E. Fiberglass insulation

- F. Composite one-piece gel coat exterior sidewall
- G. Framed windows
- H. Aluminum sidewall structure with 16" on-center framing



Roof Construction

- A. Cloth or cushion foam with vinyl overlay
- B. 3/16" panel
- C. 1" tubular aluminum truss rafter with full joint weld
- D. Welded aluminum crowned roof structure with 16" on-center framing
- E. True Central Air Conditioning—insulated ducted distribution and return
- F. Fiberglass batten insulation
- G. 7mm wood decking (optional)
- H. Aluminum or optional Brite-Tek roof
- I. One-piece fiberglass caps
- J. Aluminum wrap



g Cold Supply g Warm Return

**TRUE CENTRAL AIR:** Newmar's True Central Air System—standard with every Newmar RV—is just like those found in most site-built homes. It's actually two separate, fully ducted systems: one to distribute incoming cool air, the other to quickly and effectively remove warm air from every living area.





A



B



C



D

## INTERIOR COLORS

A. French Blue

B. Pecan

C. Ivy

D. Paprika

## EXTERIOR COLORS (ALL UNITS ARE FULL-PAINT)

A. French Blue

B. Pecan

C. Ivy

D. Paprika



A



B



C



D

### FULL-PAINT MASTERPIECE FINISH™

The Full-Paint Masterpiece Finish from Newmar creates an exterior of stunning beauty and incredible endurance—a true work of art. Newmar is an industry leader in applying full body paint to its coaches. We are pleased to offer it as an option on your Kountry Aire Fifth Wheel.

### NEWMARCORP.COM

Here you'll discover the latest model specifications, floor plans and options, as well as information on who we are, how we work and what we believe in.



*Wonder where our next road will lead?*

## THE NEWMAR KOUNTRY KLUB

As a Newmar owner, you qualify for membership in the Newmar Kountry Klub. Join your local chapter, and just look at the perks you'll enjoy: friendship, fun and adventure with other Newmar owners • rallies and caravans • special RV show events • discounts on RV services • a free monthly Klub magazine • Klub merchandise. And that's just for starters.

Join today! Call 877-639-5582, toll-free, or visit the Klub section of [newmarcorp.com](http://newmarcorp.com).

## THE NEWMAR FACTORY TOUR

We'd love to have you visit our state-of-the-art production facility in Nappanee, Indiana. For details, including tour days and times, please call 574-773-7791.

NEWMAR CORPORATION  
355 N DELAWARE ST  
PO BOX 30  
NAPPANEE IN 46550-0030  
574-773-7791 Fax 574-773-2895  
[www.newmarcorp.com](http://www.newmarcorp.com)

Official Newmar Dealer:



NEWMAR QUALITY: A WAY OF LIFE

Some features shown in our literature are optional. Colors and finishes are photographic representations. The actual materials may look different. Prices, specifications and floor plans are subject to change at Newmar's discretion without prior written notice or obligation. Please see your dealer for actual samples and specifications. © 2003 Newmar Corporation. Printed in the U.S.A. (05/03)



2004 KOUNTRY AIRE  
FIFTH WHEEL BY NEWMAR



# 2004 KOUNTRY AIRE

FIFTH WHEEL BY NEWMAR

DESTINATION:

*Savannah, Georgia*



NEWMARCORP.COM



# SPECIFICATIONS

## STANDARD FEATURES

### TOWABLE CHASSIS FEATURES

- Stainless Steel Wheel Simulators
- Shock Absorbers
- Spare Tire, Located in Front Storage Compartment on Pullout Tray
- Dual Wheels, Disc Brakes, Mor/Ryde® Rubber Equalizer Suspension

### GRAPHICS & DECOR CHOICES

- Fully Painted Exterior Graphics with Clearcoat Finish

### AIR CONDITIONING & HEATING

- Two 40 lb. LP-Gas Bottles with Empty Indicator Light on Slideout Tray
- 13,500-Btu Brisk® Central Air Conditioner
- LP Leak Detector

### APPLIANCES & ACCESSORIES

- 10-Gal. Gas/Electric Water Heater with Direct-Spark Ignition
- 22" Spacesaver Microwave
- Three-burner Recessed Range with Glass Oven Door and Electronic Ignition
- AM/FM Radio with Cassette, CD Player
- Dometic® 1062 Refrigerator (10 Cu. Ft.)
- Telephone Connection with One Phone Jack
- TV Antenna with Power Booster, One Exterior Jack and Two Interior Jacks
- Flat-screen Color TV in Living Area
- Cable TV Connection with RG 6 Coax
- Range Cover of Matching Countertop Material
- Satellite Prep (Phone, TV Jack and Recept)
- Washer/Dryer Prep
- Ceiling Fan in Living Area
- VCR Prep with TV Video Selector Switch

### CABINETS & FURNITURE

- Oak Hardwood Unitized Cabinets with Raised-Panel Double-Arched Doors
- Flexsteel® Sofa
- Flexsteel Chairs with Ottomans
- Lifts on Bed to Access Storage Area
- Queen Bed—60" X 80" with Pillowtop Mattress
- Polished Corian® Countertop in Kitchen with Undermount Acrylic Sink and Flush Sink Covers
- Dinette Table with Four Chairs
- Polished Corian Lavatory Countertop with an Integrated Bowl in Bathroom
- Chair End Table

## ELECTRICAL FEATURES

- 75-amp Converter
- Two 6 V House Batteries
- 50-amp Electrical Service with Flexible Cord
- Battery Disconnect Switch
- Exterior Security Lights, One Installed On Each Side
- Interior Courtesy Lights
- Lights in Exterior Storage Areas, Controlled By An Interior Master Switch
- Midship Side Turn Signals
- Fluorescent Lights in Ceiling and Overhead Cabinets

## EXTERIOR FEATURES

- Gel-Coated Fiberglass Exterior Sides
- BriteTek® Roof with 7mm Decking and Radius Fiberglass Top Wrap
- Power Front Jacks Rated at 12,000 lb. with Independent Operation
- Rear Skid Bars with Bike Rack Capability
- Two Pairs of Stabilizer Jacks
- Snaps for Jacks
- Storage Drawer in Front Compartment Area
- One-Piece Molded-Fiberglass Front Gooseneck Area

## INTERIOR FEATURES

- Lined Day/Night Pleated Window Shades and Lambrequins
- Vertical Blinds on Rear Bay Windows
- Quilted Bedspread with Pillow Shams, Matching Bed Skirt and Accent Pillows
- Carpeting in Living Room, Bedroom and Bathroom Areas
- Padded Vinyl Ceiling
- 12" Marble-Look Floor Tile in Kitchen Area
- Decorative Area Rug in Kitchen
- Hardwood Fascia on Living Area Slideout
- Kitchen Waste Basket on Pullout Tray
- Hardwood Window Trim

## PLUMBING & BATH FEATURES

- Monitor Panel
- Thetford® Aria Sculptured China Stool
- Fiberglass Tub/Shower with Reeded Glass Shower Door
- Water-Heater Bypass System
- Demand Water System with Aquajet® ES Pump
- Sewage Holding-Tank Rinse
- Delta® Faucets in Kitchen and Bathroom
- Gate-Valve Drain on Freshwater Tank
- Sewage Hose Holder, Easy Access Flip-Down Tray

## CONSTRUCTION FEATURES

- Aluminum-Frame Sidewalls and Roof Construction, 16" On Center
- Roof R-Value Rating: 24
- Sidewall R-Value Rating: 11
- Floor R-Value Rating: 26
- 16" I-Beam Frame with Molded Wrap Storage Doors
- 5/8" Foam Insulation Laminated in Sidewalls and Ceiling
- Enclosed Underbelly with Fiberglass Insulation and Aluminum Laminated to 5/8" Foam
- R7 Fiberglass Insulation in Sidewalls, R19 in Floor and Roof

## WINDOWS, AWNINGS & VENTS

- Power Vent in Bathroom with Wall Switch
- Tinted Safety-Glass Windows
- A&E® 9000 Side Awning
- Fan-Tastic® Vent with Rain Sensor in Kitchen Area
- Skylight in Bathroom
- Triple Entrance-Door Step



# SPECIFICATIONS

## OPTIONAL FEATURES

### TOWABLE CHASSIS FEATURES

- Mor/Ryde® Independent Suspension (174 lb.)

### AIR CONDITIONING & HEATING

- 13,500-Btu Penguin® Air Conditioner in Lieu of Standard (5 lb.)
- 15,000-Btu Penguin Air Conditioner in Lieu of Standard (5 lb.)
- 15,000-Btu Brisk® Air Conditioner (5 lb.)
- 15,000-Btu Brisk Heat Pump Air Conditioner (5 lb.)
- Extra 13,500-Btu Brisk Air Conditioner (95 lb.)
- Extra 13,500-Btu Penguin Heat Pump Air Conditioner (5 lb.)
- Extra 15,000-Btu Brisk Air Conditioner (100 lb.)
- Extra 15,000-Btu Penguin Heat Pump Air Conditioner (100 lb.)
- Two 40 lb. LP-Gas Aluminum Bottles

### APPLIANCES & ACCESSORIES

- Two-Piece Washer/Dryer (210 lb.)
- Dometic® I292 Side-By-Side Refrigerator with Icemaker (12 Cu. Ft.) (47 lb.)
- Norcold® Four-Door Refrigerator (45 lb.)
- Dishwasher (75 lb.)
- 30" Convection Microwave with Three-Burner Cooktop (13 lb.)
- 13" Color TV in Bedroom (24 lb.)
- DVD Player (10 lb.)
- Theater System with DVD Player (15 lb.)
- VCR and TV Video Selector Switch (12 lb.)
- Fireplace (56 lb.)

### CABINETS & FURNITURE

- Northern Maple Hardwood Cabinets
- Natural Cherry Hardwood Cabinets
- Regent Cherry Hardwood Cabinets
- Sofa Coffee Table with Glass Top (85 lb.)
- Luxurious Pillowtop Mattress (10 lb.)
- Combination Desk/Dinette Table (50 lb.)
- Undermount Corian® Offset Sink in Kitchen (25 lb.)
- Air Mattress for Hide-A-Bed Sofa (27 lb.)

### ELECTRICAL FEATURES

- Generator Prep, Changeover and Carbon Monoxide Detector
- 400-watt Inverter for Entertainment Center (10 lb.)
- Quick-Charge Battery System
- Trace® 2000-watt Inverter and Two Extra Batteries (178 lb.)
- Solar Prep, Wire from Roof to Battery Compartment
- Exterior Security Lights, Two Installed on Each Side (2 lb.)
- 7.0 Onan® Generator with Auto Changeover and Battery (345 lb.)

## EXTERIOR FEATURES

- Hydraulic Leveling Jacks with Touch Panel Control (150 lb.)
- Power Twin Jacks (40 lb.)
- Rear Ladder (4 lb.)
- Gel-Coated Fiberglass Roof with 1/4" Foam Insulation (78 lb.)
- Cargo Net in Storage Area
- Front Protective Film to Lower Front Storage Area (6 lb.)

## INTERIOR FEATURES

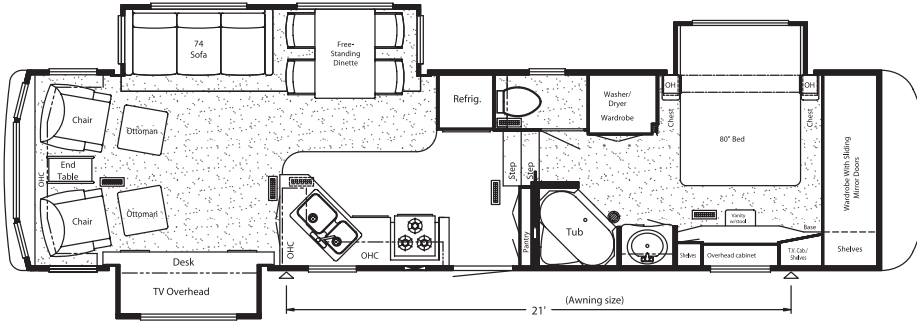
- Simulated Plank Floor in Kitchen and Foyer Areas
- Porcelain Ceramic Floor Tile in Kitchen and Foyer Areas (35 lb.)
- Lined Drapes with Valances (10 lb.)
- Porcelain Ceramic Floor Tile in Bathroom Area (75 lb.)

## WINDOWS, AWNINGS & VENTS

- Fan-Tastic Porcelain Vent in Bathroom (11 lb.)
- Double-Pane Tinted Safety-Glass Windows (110 lb.)
- Automatic Triple Entrance-Door Step (7 lb.)
- Power Slideout Landing with Railing and Power Step (130 lb.)
- Manual Slideout Landing with Railing and Manual Step (120 lb.)

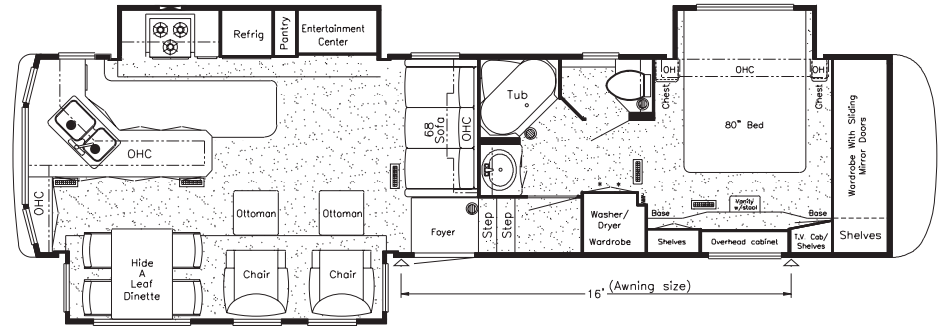


# FLOOR PLANS



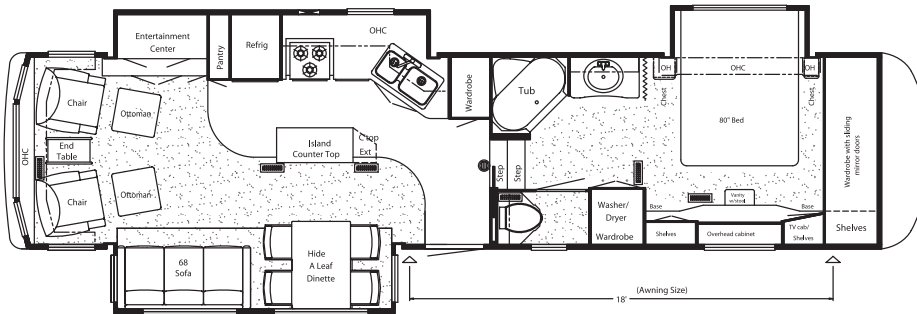
Model Shown: KAFW 35BLDS

Floor Plan Options: M477



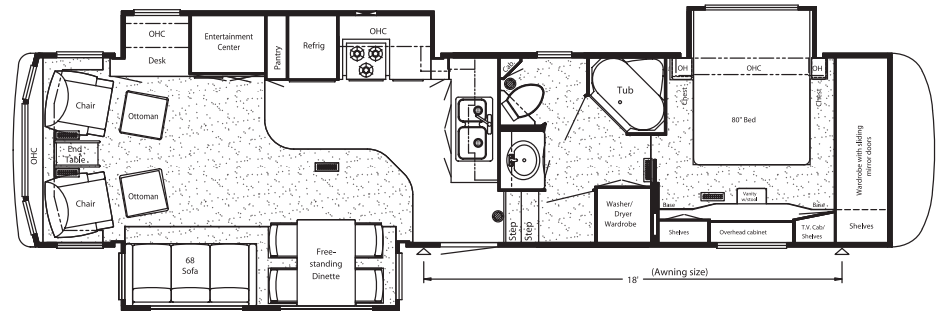
Model Shown: KAFW 35LKSA

Floor Plan Options: K563, M474



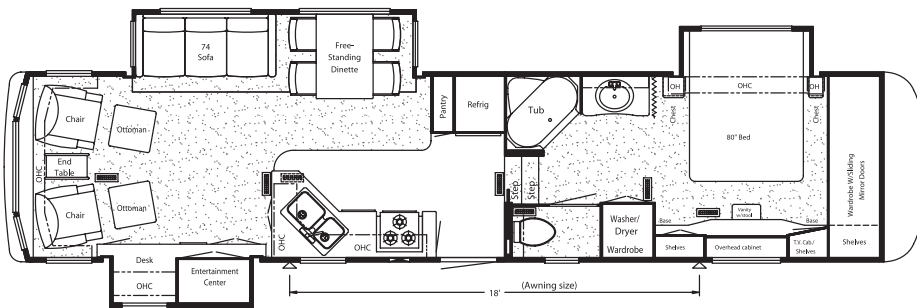
Model Shown: KAFW 36WBKS

Floor Plan Options: K563, M474, P094



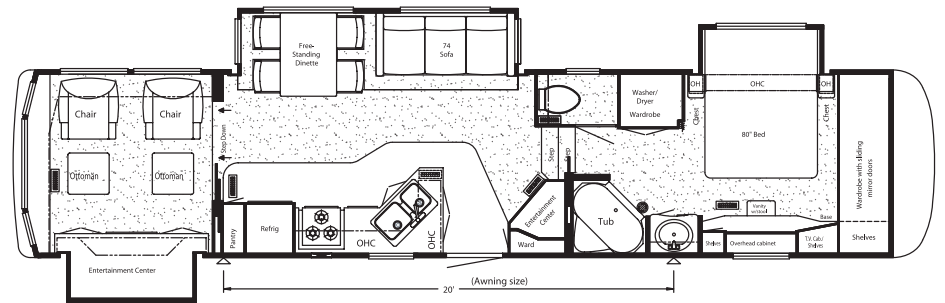
Model Shown: KAFW 37KSSB

Floor Plan Options: K563, M474



Model Shown: KAFW 38BLSE

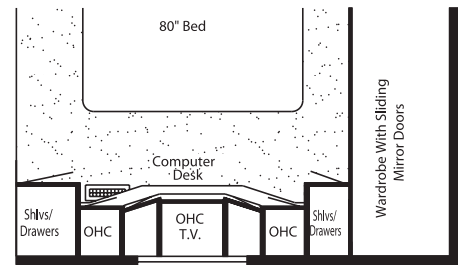
Floor Plan Options: K563, M474, P094



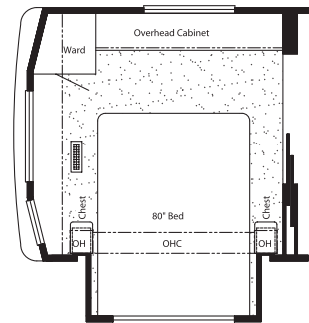
Model Shown: KAFW 38SDTS

Floor Plan Options: K566, M477

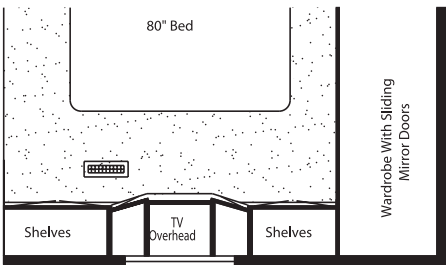
# FLOOR PLAN OPTIONS



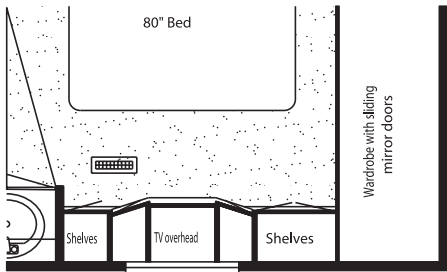
K563: WALK-THROUGH BATH WITH COMPUTER DESK  
35LKSA, 36WBKS, 37KSSB, 38BLSE



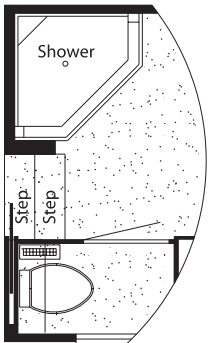
K566: REAR BEDROOM SLIDEOUT  
38SDTS



M474: VANITY OVER DRESSER CENTER  
35LKSA, 36WBKS, 37KSSB, 38BLSE



M477: VANITY OVER DRESSER CENTER  
35BLDS, 38SDTS



P094: WALK-THROUGH OPEN BATH, CORNER SHOWER  
36WBKS, 38BLSE



# FLOOR PLAN SPECIFICATIONS

FLOOR PLAN	TIRE SIZE	GAWR	GVWR	APP. LENGTH	APP. HEIGHT	WIDTH	APP. DRY WEIGHT	APP. HITCH WEIGHT	FRESH WATER	GREY	SEWAGE CAP.	APP. HITCH HEIGHT	HEAT CAP.
KAFW 35BLDS	235/85R16-E	9,000 lb.	21,000 lb.	38' 5"	13' 3"	101"	16,577 lb.	2,818 lb.	75 gal.	92 gal.	50 gal.	47"	55,000 Btu
KAFW 35LKSA	235/85R16-E	9,000 lb.	21,000 lb.	38'	13' 3"	101"	16,685 lb.	2,670 lb.	75 gal.	92 gal.	50 gal.	47"	55,000 Btu
KAFW 36WBKS	235/85R16-E	9,000 lb.	21,000 lb.	39' 3"	13' 3"	101"	16,949 lb.	3,051 lb.	75 gal.	92 gal.	50 gal.	47"	55,000 Btu
KAFW 37KSSB	235/85R16-E	9,000 lb.	21,000 lb.	39' 9"	13' 3"	101"	16,887 lb.	3,209 lb.	75 gal.	92 gal.	50 gal.	47"	55,000 Btu
KAFW 38BLSE	235/85R16-E	9,000 lb.	21,000 lb.	40' 7"	13' 3"	101"	17,197 lb.	2,923 lb.	75 gal.	92 gal.	50 gal.	47"	55,000 Btu
KAFW 38SDTS	235/85R16-E	9,000 lb.	21,000 lb.	41' 1"	13' 3"	101"	17,134 lb.	3,255 lb.	75 gal.	92 gal.	50 gal.	47"	55,000 Btu

# NOTES

A series of horizontal dashed lines for writing notes.



*Wonder where our next road will lead?*

## THE NEWMAR KOUNTRY KLUB

As a Newmar owner, you qualify for membership in the Newmar Kountry Klub. Join your local chapter, and just look at the perks you'll enjoy: friendship, fun and adventure with other Newmar owners • rallies and caravans • special RV show events • discounts on RV services • a free monthly Klub magazine • Klub merchandise. And that's just for starters.

Join today! Call 877-639-5582, toll-free, or visit the Klub section of [newmarcorp.com](http://newmarcorp.com).

## THE NEWMAR FACTORY TOUR

We'd love to have you visit our state-of-the-art production facility in Nappanee, Indiana. For details, including tour days and times, please call 574-773-7791.

NEWMAR CORPORATION  
355 N DELAWARE ST  
PO BOX 30  
NAPPANEE IN 46550-0030  
574-773-7791 Fax 574-773-2895  
[www.newmarcorp.com](http://www.newmarcorp.com)

Official Newmar Dealer:



NEWMAR QUALITY: A WAY OF LIFE

Some features shown in our literature are optional. Colors and finishes are photographic representations: The actual materials may look different. Prices, specifications and floor plans are subject to change at Newmar's discretion without prior written notice or obligation. Please see your dealer for actual samples and specifications. © 2003 Newmar Corporation. Printed in the U.S.A. (05/03)