

2004 MOUNTAIN AIRE  
FIFTH WHEEL BY NEWMAR

# 2004 MOUNTAIN AIRE

FIFTH WHEEL BY NEWMAR

DESTINATION:

*Pacific Northwest, July-August*



NEWMARCORP.COM



Like sunlight dancing across water or the caress of a breeze in a field of flowers, a Mountain Aire Fifth Wheel can invigorate any travel experience. That's because Newmar lavishes so much care on even the smallest detail. From the dual-motor fifth wheel jacks...to the exterior's optional Full-Paint Masterpiece Finish™ to this year's higher ceilings and expanded pass-through storage space...this is an RV that makes getaways truly come alive. You know that's what you've longed for. Visit your Newmar dealer, and see how refreshing a Mountain Aire Fifth Wheel can be!







35LKBH/Delft Blue



B

38RLPK/Wheat

- A. This unique and visually appealing layout offers much additional cabinet and Corian® countertop space.
- B. Our new flush floor in the bathroom and the bedroom increases ceiling height to 6'6", while bedroom slideout windows expand your view, let in more light and aid ventilation.
- C. Plentiful cabinets and a thoughtful layout distinguish the Mountain Aire kitchen, enhancing its usefulness.
- D. This bedroom's warm, rich cabinetry offers an abundance of drawers, spacious wardrobes and an elegant vanity mirror.



C

38RLPK/Wheat



D

36BLDS/Cameo Rose



JULY 26 ~

*We spent the morning walking the forest trails, then had lunch in an impressive stone picnic shelter.*



A





35LKBH/Delft Blue



B

- A. Flexsteel® glider recliners create a cozy, comfortable conversation area in this living room arrangement.
- B. Pack everything you want: The unobstructed pass-through bay provides maximum storage space without sacrificing frame strength.
- C. An optional Pioneer® stereo system upgrade is available for entertainment center installation.
- D. The entertainment center features a roomy desk, an overhead 27" flat-screen color TV and a stereo system with built-in speakers.



C

36BLDS/Cameo Rose



D

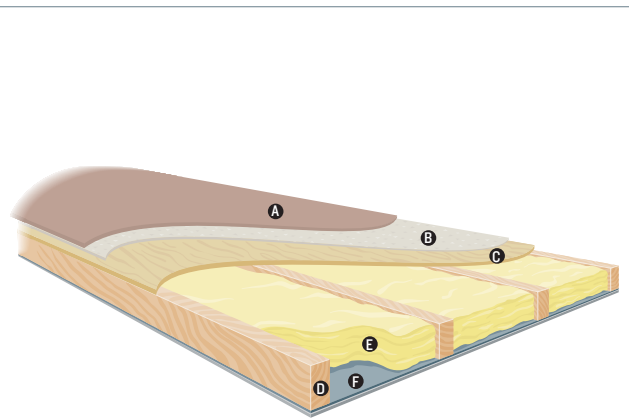
36BLDS/Cameo Rose

# NEWMAR'S FREEDOM WARRANTY™

Your Mountain Aire Fifth Wheel is built to take you as far as your road rolls on...for as long as you roll on with it. Because there's more than enough solid engineering here to ensure years of travel pleasure.

Mountain Aire is assembled on the same production line, to the same exacting standards and with the same meticulous care, as all Newmar coaches. It also embodies Newmar's long history of product innovation and industry "firsts." For us, it's a matter of pride. And tradition. Of taking personal responsibility and building a product that each of us, ourselves, would want to own.

As proof of our commitment, we back every coach we make with a three-year, bumper-to-bumper limited warranty: The Newmar Freedom Warranty. Ask your dealer for details. You're sure to find coverage this comprehensive a truly liberating experience.

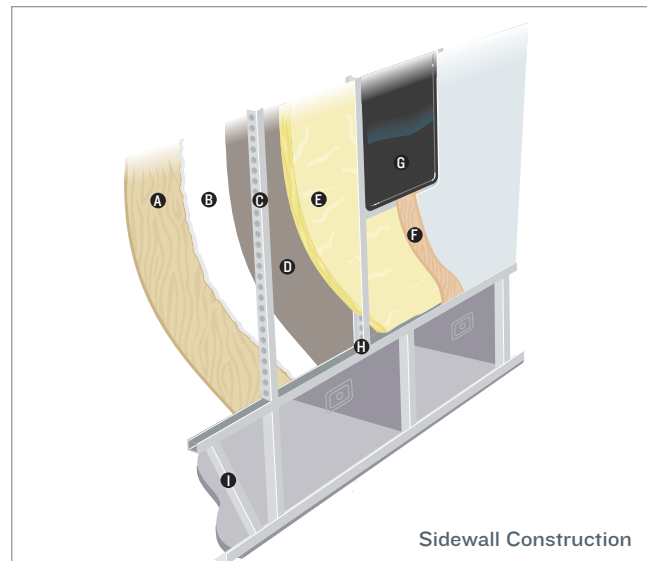


Floor Construction

- A. Plush carpet\*
- B. Carpet padding
- C. 5/8" floor decking

- D. 2" x 3" wood stringer
- E. Fiberglass batten insulation
- F. Bead foam laminated to aluminum bottom moisture barrier

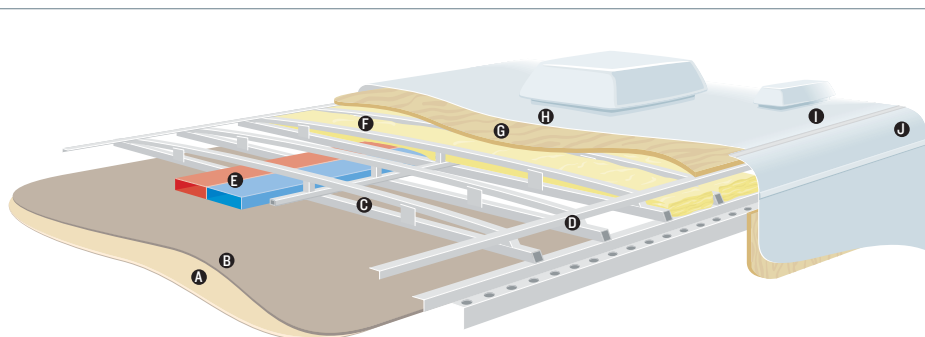
\*Ceramic tile, simulated floor and simulated tile options also available.



Sidewall Construction

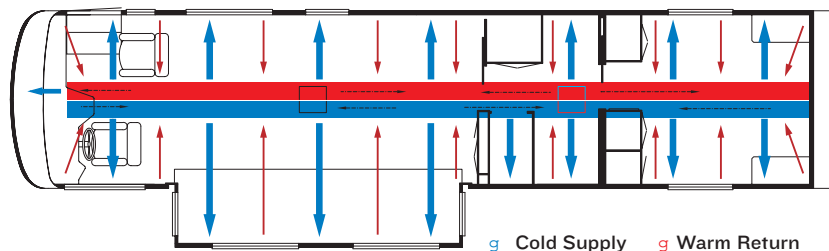
- A. Plywood interior wallboard
- B. 5/8" bead foam
- C. 1.5" C-channel aluminum studs with punched holes
- D. Kraft paper vapor barrier
- E. Fiberglass insulation

- F. Composite one-piece gel coat exterior sidewall
- G. Framed windows
- H. Aluminum sidewall structure with 16" on-center framing
- I. 12" cambered steel I-beam frame



Roof Construction

- A. Woven soft touch fabric
- B. 3/16" panel
- C. 1" tubular aluminum truss rafter with full joint weld
- D. Welded aluminum crowned roof structure with 16" on-center framing
- E. True Central Air Conditioning—insulated ducted distribution and return
- F. Fiberglass batten insulation
- G. 7mm wood decking (optional)
- H. Aluminum or optional Brite-Tek roof
- I. One-piece fiberglass caps
- J. Aluminum wrap



g Cold Supply g Warm Return

**TRUE CENTRAL AIR:** Newmar's True Central Air System—standard with every Newmar RV—is just like those found in most site-built homes. It's actually two separate, fully ducted systems: one to distribute incoming cool air, the other to quickly and effectively remove warm air from every living area.





A



D



C



B



A



D



C



B

## EXTERIOR COLORS

A. Delft Blue (Vinyl)

B. Cameo Beige (Vinyl)

C. Cashmere (Full Paint)

D. Arctic Grey (Full Paint)

## INTERIOR COLORS

A. Wheat

B. Cameo Rose

C. Fern Green

D. Delft Blue

Real woods will have natural variations in grain and color. Natural wood products will darken over time.

**NEWMARCORP.COM**

Here you'll discover the latest model specifications, floor plans and options, as well as information on who we are, how we work and what we believe in.



*Wonder where our next road will lead?*

## THE NEWMAR KOUNTRY KLUB

As a Newmar owner, you qualify for membership in the Newmar Kountry Klub. Join your local chapter, and just look at the perks you'll enjoy: friendship, fun and adventure with other Newmar owners • rallies and caravans • special RV show events • discounts on RV services • a free monthly Klub magazine • Klub merchandise. And that's just for starters.

Join today! Call 877-639-5582, toll-free, or visit the Klub section of [newmarcorp.com](http://newmarcorp.com).

## THE NEWMAR FACTORY TOUR

We'd love to have you visit our state-of-the-art production facility in Nappanee, Indiana. For details, including tour days and times, please call 574-773-7791.

NEWMAR CORPORATION  
355 N DELAWARE ST  
PO BOX 30  
NAPPANEE IN 46550-0030  
574-773-7791 Fax 574-773-2895  
[www.newmarcorp.com](http://www.newmarcorp.com)

Official Newmar Dealer:



NEWMAR QUALITY: A WAY OF LIFE

Some features shown in our literature are optional. Colors and finishes are photographic representations. The actual materials may look different. Prices, specifications and floor plans are subject to change at Newmar's discretion without prior written notice or obligation. Please see your dealer for actual samples and specifications. © 2003 Newmar Corporation. Printed in the U.S.A. (05/03)



**2004 MOUNTAIN AIRE**  
FIFTH WHEEL BY NEWMAR

# 2004 MOUNTAIN AIRE

FIFTH WHEEL BY NEWMAR

DESTINATION:

*Pacific Northwest, July-August*



[NEWMARCORP.COM](http://NEWMARCORP.COM)

# SPECIFICATIONS

## STANDARD FEATURES

### TOWABLE CHASSIS FEATURES

- Easy Lube Equalizers
- Shock Absorbers
- Spare Tire, Located in Rear Pullout Bumper Tray

### AIR CONDITIONING & HEATING

- Two 30 lb. LP Gas Bottles with Automatic Regulator
- I3,500-Btu Brisk® Central Air Conditioner
- LP Leak Detector

### APPLIANCES & ACCESSORIES

- Ten-Gal. Gas/Electric Water Heater with Direct-Spark Ignition
- 22" Spacesaver Microwave
- Three-Burner Recessed Range with Glass Oven Door and Electronic Ignition
- AM/FM Radio with Cassette, CD Player
- Dometic® 3862 Refrigerator (8 Cu. Ft.)
- Telephone Connection with One Phone Jack
- Flat-Screen Color TV in Living Area
- Cable TV Connection with RG 6 Coax
- Range Cover of Matching Countertop Material
- Satellite Prep (Phone, TV Jack and Recept)
- Washer/Dryer Prep
- Ceiling Fan in Living Area

### CABINETS & FURNITURE

- Oak Hardwood Raised-Panel Cabinet Doors
- Flexsteel® Sofa
- Flexsteel Recliner(s)
- Lifts on Bed to Access Storage Area
- Queen Bed - 60" X 80"
- Corian® Countertop in Kitchen with Undermount Acrylic Sink and Flush Sink Covers
- Dinette Table with Four Chairs
- Laminate Countertop in Bathroom with Porcelain Bowl
- Drawers with Metal Guides

### ELECTRICAL FEATURES

- 55-amp Converter
- I20-volt Battery
- 50-amp Electrical Service with Flexible Cord
- Lights in Wardrobes

### EXTERIOR FEATURES

- Gel-coated Fiberglass Exterior Sides
- BriteTek® Roof with 7mm Decking
- Power Front Jacks
- Rear Skid Bars with Bike Rack Capability
- One Pair of Stabilizer Jacks
- Snaps for Jacks

### INTERIOR FEATURES

- Day/Night Pleated Window Shades with Lined Drapes and Valances
- Vertical Blinds on Rear Bay Windows

- Quilted Bedspread with Reverse Sham, Matching Bed Skirt, and Accent Pillow
- Carpeting in Living Room and Bedroom Areas
- Vinyl Floor in Kitchen, Foyer and Bathroom Areas
- Woven Soft Touch Ceiling

### PLUMBING & BATH FEATURES

- Monitor Panel
- Thetford® Bravura Stool
- Fiberglass Tub/Shower with Glass Shower Door
- Water-Heater Bypass System
- Demand Water System with Aquajet ES Pump
- Sewage Holding-Tank Rinse
- Sewage Hose Holder, Easy Access Flip-Down Tray

### CONSTRUCTION FEATURES

- Aluminum-Frame Sidewalls and Roof Construction, I6" On Center
- Roof R-Value Rating: 24
- Sidewall R-Value Rating: II
- Floor R-Value Rating: 26
- I2" I-beam Frame with Molded-Wrap Storage Doors
- 5/8" Foam Insulation Laminated in Sidewalls and Ceiling
- Enclosed Underbelly with Fiberglass Insulation and Aluminum Laminated to 5/8" Foam
- R7 Fiberglass Insulation in Sidewalls, RI9 in Floor and Roof

### WINDOWS, AWNINGS & VENTS

- Power Vent in Bathroom with Wall Switch
- Tinted Safety-Glass Windows
- A&E® 9000 Side Awning
- Triple Entrance Door Step

## OPTIONAL FEATURES

### TOWABLE CHASSIS FEATURES

- Dual Wheels, Disc Brakes, Mor/Ryde Independent Suspension
- Electric Over Hydraulic Disc Brakes
- Dual Wheels, Disc Brakes, Mor/Ryde Rubber Equalizers

### GRAPHICS & DECOR CHOICES

- Exterior Full-Paint Graphics

### AIR CONDITIONING & HEATING

- I3,500-Btu Penguin® Air Conditioner in Lieu of Standard (5 lb.)
- Extra I3,500-Btu Brisk Air Conditioner (95 lb.)
- Extra I3,500-Btu Penguin Heat Pump Air Conditioner (5 lb.)
- I5,000-Btu Penguin Air Conditioner in Lieu of Standard (5 lb.)
- I5,000-Btu Brisk Air Conditioner (5 lb.)
- I5,000-Btu Brisk Heat Pump Air Conditioner (5 lb.)
- Extra I5,000-Btu Brisk Air Conditioner (I00 lb.)
- Extra I5,000-Btu Penguin Heat Pump Air Conditioner (I00 lb.)
- Two 40 lb. LP-Gas Bottles (I5 lb.)
- Empty LP-Gas Bottle Indicator Light (I lb.)

## APPLIANCES & ACCESSORIES

- Two-Piece Washer/Dryer (2I0 lb.)
- Dometic® I062 Refrigerator (I0 Cu. Ft.) (9I lb.)
- Dometic I292 Side-By-Side Refrigerator, (I2 Cu. Ft.) (47 lb.)
- Norcold® Four-Door Refrigerator (45 lb.)
- Dishwasher (75 lb.)
- 30" Convection Microwave with Three-Burner Cooktop (I3 lb.)
- I3" Color TV in Bedroom (24 lb.)
- DVD Player (I0 lb.)
- Fireplace (56 lb.)
- Theater System with DVD Player (I5 lb.)
- VCR Prep with TV/Video Selector Switch (I lb.)
- VCR and TV/Video Selector Switch (I2 lb.)

### CABINETS & FURNITURE

- Maple Cream Cabinets
- Coastal Cherry Hardwood Cabinets (25 lb.)
- Oak Hardwood Cabinets (25 lb.)
- Washington Cherry Hardwood Cabinets (25 lb.)
- Summer Maple Hardwood Cabinets (25 lb.)
- Air Mattress for Hide-A-Bed Sofa (27 lb.)
- Combination Desk/Dinette Table (50 lb.)
- Luxurious Pillowtop Mattress (I0 lb.)

### ELECTRICAL FEATURES

- Two 6 V Batteries (86 lb.)
- Battery Disconnect Switch
- Generator Prep, Auto Changeover and Carbon Monoxide Detector
- Quick-Charge Battery System
- Exterior Security Lights, One Installed on Each Side
- Solar Prep, Wire from Roof to Battery Compartment
- 7.0 Onan® Generator with Auto Changeover and Battery (345 lb.)

### EXTERIOR FEATURES

- Cargo Net in Storage Area
- Electric Quick-Draw Jacks (20 lb.)
- Gel-Coated Fiberglass Roof and Top Wrap (96 lb.)
- Hydraulic Leveling Jacks (I75 lb.)
- Front Protective Film to Lower Front Storage Area (6 lb.)
- Power Front Jacks
- Power Twins (20 lb.)
- Rear Ladder (4 lb.)

### INTERIOR FEATURES

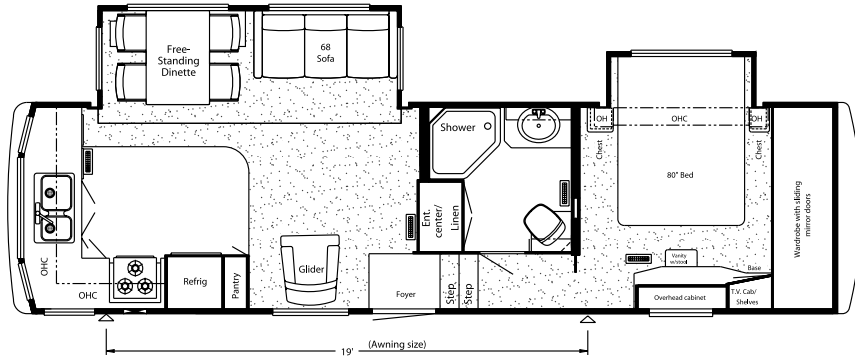
- Simulated Plank Floor in Kitchen and Foyer Areas (30 lb.)
- I2" Marble-Look Floor Tile in Kitchen and Main Bathroom Areas (20 lb.)
- Ceramic Floor Tile in Kitchen, Foyer Area and Bathroom Areas (IIO lb.)
- Lambrequin Window Treatment (20 lb.)

### WINDOWS, AWNINGS & VENTS

- Fan-Tastic® Vent with Rain Sensor in Kitchen Area (II lb.)
- Fan-Tastic Vent in Bathroom (II lb.)
- Double-Pane Tinted Safety-Glass Windows (IIO lb.)
- Automatic Triple-Entrance Door Step (7 lb.)
- Skylight in Bathroom (2 lb.)

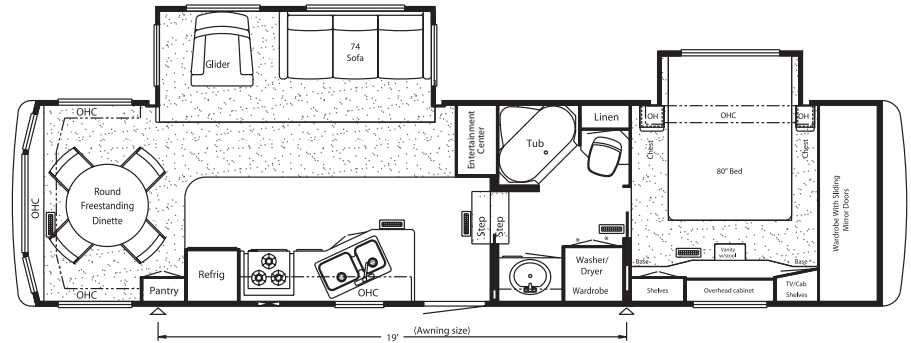


# FLOOR PLANS



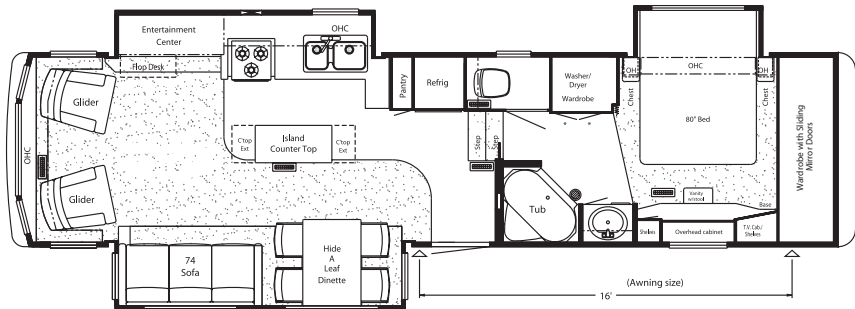
Model Shown: FW32RKCL

Floor Plan Options: M805



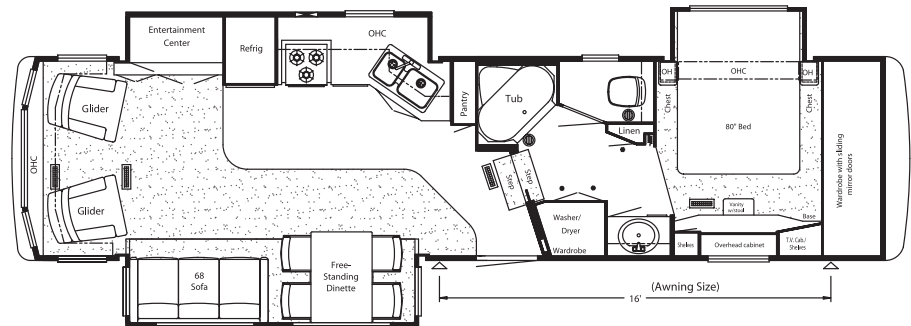
Model Shown: FW34RDCK

Floor Plan Options: K561, M466, P180



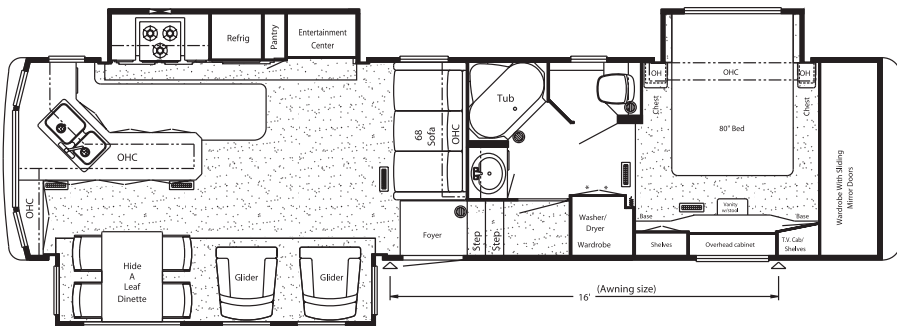
Model Shown: FW35BLKS

Floor Plan Options: M764



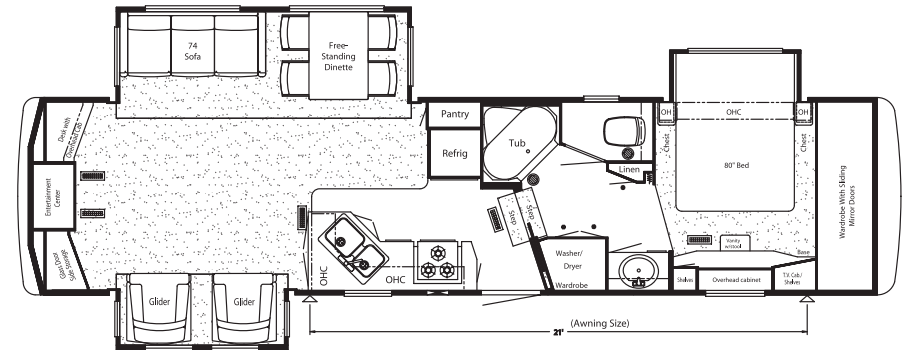
Model Shown: FW35KSFB

Floor Plan Options: M764



Model Shown: FW35LKBH

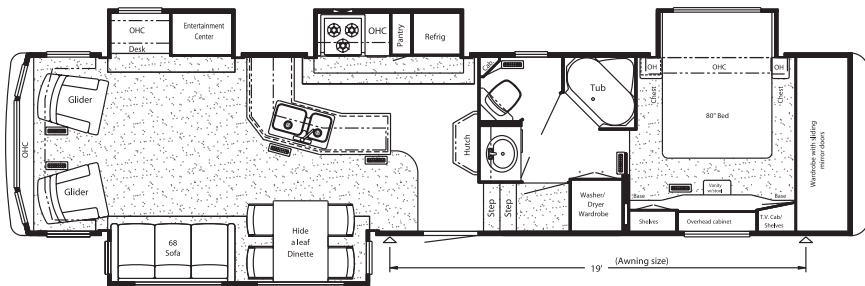
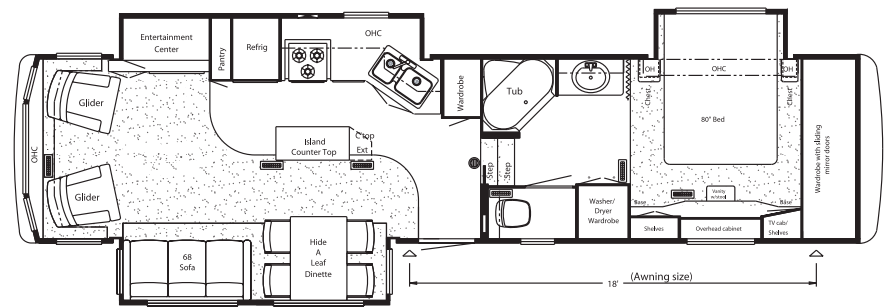
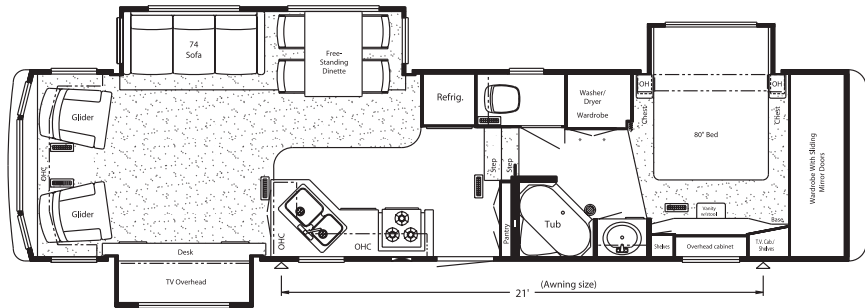
Floor Plan Options: K561, M466



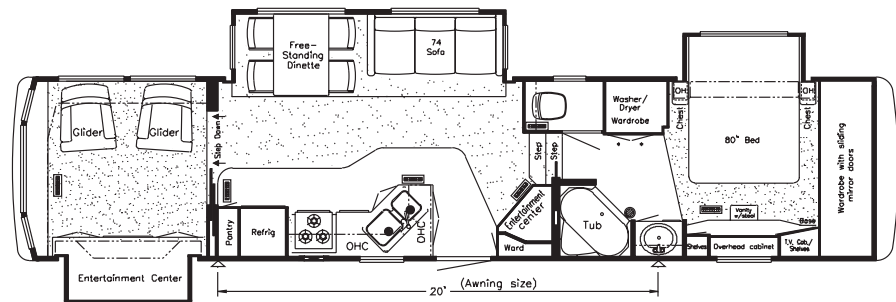
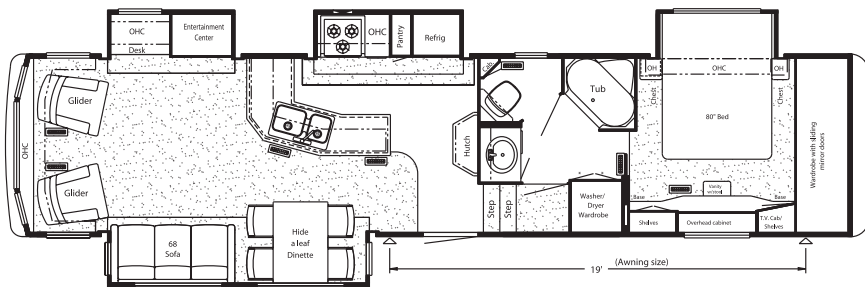
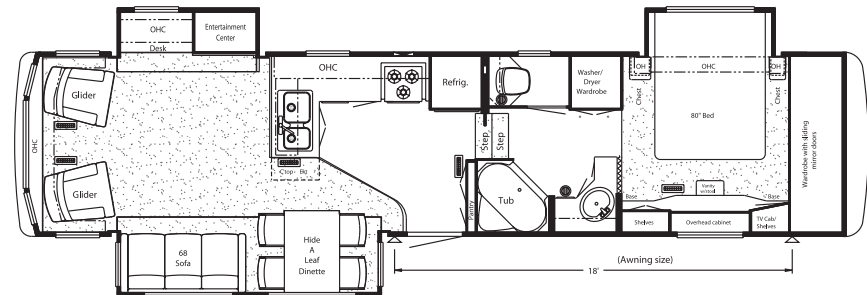
Model Shown: FW35SKDS

Floor Plan Options: M764

# FLOOR PLANS



2004 Mountain Aire 38' RLPK-FW

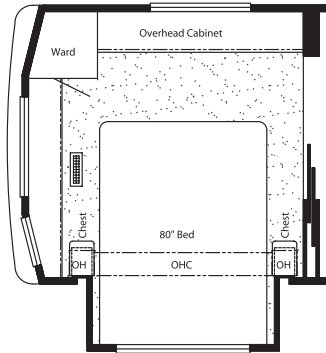




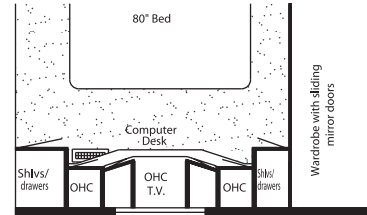
# FLOOR PLAN OPTIONS



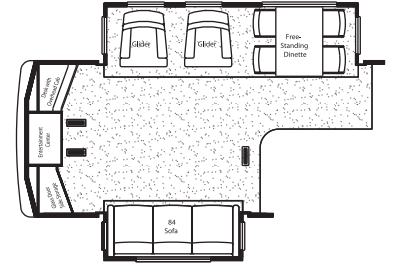
**K470: DESK ENTERTAINMENT CENTER**  
38SDKC



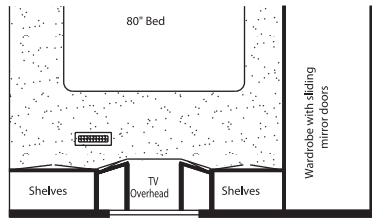
**K560: REAR BEDROOM SLIDEOUT**  
38SDKC



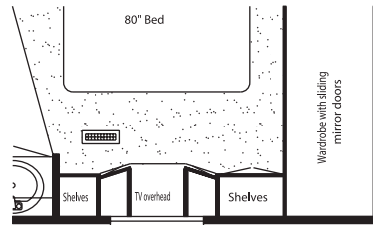
**K561: WALK-THROUGH BATH WITH COMPUTER DESK**  
34RDCK, 35LKBH, 36KSWB, 37CKRL, 38RLPK



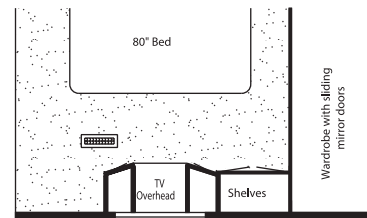
**K791: REAR ENTERTAINMENT CENTER**  
37BLFB



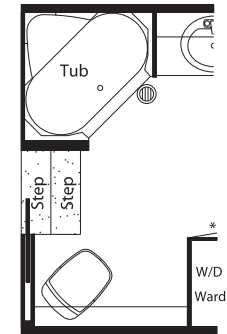
**M466: WALK-THROUGH BATH WITH VANITY OVER DRESSER**  
34RDCK, 35LKBH, 36KSWB, 37CKRL, 38RLPK



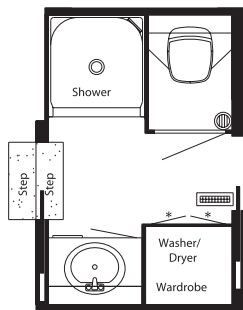
**M764: VANITY OVER DRESSER CENTER**  
35BLKS, 35KSFB, 35SKDS, 36BLDS, 37BLFB, 38SDKC



**M805: CABOVER SLIDEOUT WITH VANITY OVER DRESSER**  
CENTER 32RKCL



**PI60: NON-ENCLOSED STOOL**  
36KSWB



**PI80: ENCLOSED STOOL ROOM WITH STRAIGHT SHOWER**  
34RDCK

# FLOOR PLAN SPECIFICATIONS

FLOOR PLAN	TIRE SIZE	GAWR	GVWR	APP. LENGTH	APP. HEIGHT	WIDTH	APP. DRY WEIGHT	APP. HITCH WEIGHT	FRESH WATER	GREY	SEWAGE CAP.	APP. HITCH HEIGHT	HEAT CAP.
MAFW 32RKCL	235/85R16-G	7,000 lb.	16,250 lb.	33' 2"	13' 2"	101"	12,222 lb.	2,078 lb.	75 gal.	92 gal.	50 gal.	47"	42,000 Btu
MAFW 34RDCK	235/85R16-G	7,000 lb.	16,250 lb.	35' 9"	13' 2"	101"	12,954 lb.	2,332 lb.	75 gal.	92 gal.	50 gal.	47"	42,000 Btu
MAFW 35BLKS	235/85R16-G	7,000 lb.	16,250 lb.	36' 2"	13' 2"	101"	14,380 lb.	2,588 lb.	75 gal.	82 gal.	50 gal.	47"	55,000 Btu
MAFW 35KSFB	235/85R16-G	7,000 lb.	16,250 lb.	36' 2"	13' 2"	101"	13,740 lb.	2,336 lb.	75 gal.	92 gal.	50 gal.	47"	55,000 Btu
MAFW 35LKBH	235/85R16-G	7,000 lb.	16,250 lb.	36' 2"	13' 2"	101"	14,472 lb.	2,316 lb.	75 gal.	92 gal.	50 gal.	47"	55,000 Btu
MAFW 35SKDS	235/85R16-G	7,000 lb.	16,250 lb.	36' 9"	13' 2"	101"	14,354 lb.	2,584 lb.	75 gal.	82 gal.	50 gal.	47"	55,000 Btu
MAFW 36BLDS	235/85R16-E	6,000 lb.	18,500 lb.	37' 1"	13' 2"	101"	14,377 lb.	2,588 lb.	75 gal.	92 gal.	50 gal.	47"	55,000 Btu
MAFW 36KSWB	235/85R16-E	6,000 lb.	18,500 lb.	37' 10"	13' 2"	101"	14,834 lb.	2,670 lb.	75 gal.	92 gal.	50 gal.	47"	55,000 Btu
MAFW 37BLFB	235/85R16-E	6,000 lb.	18,500 lb.	38' 5"	13' 2"	101"	14,719 lb.	2,944 lb.	75 gal.	82 gal.	50 gal.	47"	55,000 Btu
MAFW 37CKRL	235/85R16-E	6,000 lb.	18,500 lb.	38' 1"	13' 2"	101"	14,548 lb.	2,619 lb.	75 gal.	92 gal.	50 gal.	47"	55,000 Btu
MAFW 38RLPK	235/85R16-E	6,000 lb.	18,500 lb.	39' 1"	13' 2"	101"	15,291 lb.	2,294 lb.	75 gal.	92 gal.	50 gal.	47"	55,000 Btu
MAFW 38SDKC	235/85R16-E	6,000 lb.	18,500 lb.	39' 8"	13' 2"	101"	15,164 lb.	2,730 lb.	75 gal.	82 gal.	50 gal.	47"	55,000 Btu



# NOTES

A series of horizontal dashed lines for writing notes.

*Wonder where our next road will lead?*

## THE NEWMAR KOUNTRY KLUB

As a Newmar owner, you qualify for membership in the Newmar Kountry Klub. Join your local chapter, and just look at the perks you'll enjoy: friendship, fun and adventure with other Newmar owners • rallies and caravans • special RV show events • discounts on RV services • a free monthly Klub magazine • Klub merchandise. And that's just for starters.

Join today! Call 877-639-5582, toll-free, or visit the Klub section of [newmarcorp.com](http://newmarcorp.com).

## THE NEWMAR FACTORY TOUR

We'd love to have you visit our state-of-the-art production facility in Nappanee, Indiana. For details, including tour days and times, please call 574-773-7791.

NEWMAR CORPORATION  
355 N DELAWARE ST  
PO BOX 30  
NAPPANEE IN 46550-0030  
574-773-7791 Fax 574-773-2895  
[www.newmarcorp.com](http://www.newmarcorp.com)

Official Newmar Dealer:



NEWMAR QUALITY: A WAY OF LIFE

Some features shown in our literature are optional. Colors and finishes are photographic representations. The actual materials may look different. Prices, specifications and floor plans are subject to change at Newmar's discretion without prior written notice or obligation. Please see your dealer for actual samples and specifications. © 2003 Newmar Corporation. Printed in the U.S.A. (05/03)