

2005 | KOUNTRY STAR FIFTH WHEEL  
*by Newmar*



# BRIGHTEN UP YOUR TRAVEL LIVING

---

WHEREVER YOUR TRAVELS TAKE YOU,  
A KOUNTRY STAR FIFTH WHEEL CAN  
MAKE EVERY DAY—AND NIGHT—BRIGHT.  
IT'S EASY TO SEE WHY.

THE INTERIORS ARE WARM, OPEN AND  
INVITING. PLUSH FURNITURE AND A HOST  
OF THOUGHTFUL AMENITIES PROVIDE  
FOR EVERY COMFORT. STORAGE SPACE  
IS EXTREMELY GENEROUS: YOU EVEN  
HAVE A HUGE PASS-THROUGH BAY. AND  
THE CONSTRUCTION? AS ALWAYS WITH  
NEWMAR, IT'S SECOND TO NONE. SO YOUR  
KOUNTRY STAR WILL TAKE YOU FAR.

EVEN MORE REMARKABLE, IN LIGHT OF  
ALL THAT IT OFFERS, IS KOUNTRY STAR'S  
AFFORDABILITY. SMART MANUFACTURING  
ACCOUNTS FOR THAT—AND MAKES FOR  
A TRULY BRIGHTER LIVING EXPERIENCE.











*Decorative Molding*

*Slideout*

*Window Treatments*

*Overhead Cabinets*

# COMFORTS TO BRIGHTEN YOUR LIFE

## *Slideout*

Grand living on a grand scale: That's what you get with the Kountry Star Fifth Wheel's living area slideouts ... courtesy of Newmar, the pioneer in RV slideouts.

## *Decorative Molding*

Recalling the rich architectural detail of fine traditional homes, the trimwork surrounding slideout openings features decorative molding accents.

## *Overhead Cabinets*

Storage space is always at a premium, especially in the living room, so these overhead cabinets can really come in handy.

## *Window Treatments*

The Kountry Star's optional large-scale double-pane windows are offset by beautiful interior treatments, including elegant lambrequins and pleated day/night shades.





37SLQS/Tranquil Green



37SLQS/Tranquil Green

LEFT: Write postcards, pay bills or go online with ease at this convenient desk. Next to it is a full-sized built-in entertainment center with extra storage space and a color TV.

ABOVE: Watch TV from the comfort of these plush living-area recliner chairs—one recliner is standard and the second is optional.

BELOW: Pull out the cushion section of this standard Magic-Bed sofa, extend it, and you've got plenty of extra—and extra restful—sleeping accommodations.



36BSPK/Summer Straw

Innovative Concept #54:  
*Magic-Bed*

1.



2.



3.



4.







**ENOUGH TO FILL YOUR PLATE**





35LKSA/Sky



36BSPK/Summer Straw

LEFT: Generous cabinet and countertop space is a hallmark of the Kountry Star kitchen. Cabinets feature oak hardwood raised-panel doors and countertops are made of solid-surface Corian®.

ABOVE: The optional 30-inch Spacemaker® convection oven is accompanied by a three-burner range featuring sealed burners with piezo ignition and a bi-fold range cover for fast, easy cleanups.

BELOW: The undermounted sink features optional flush sink covers and a pull-out faucet.



35LKSA/Sky





37SLQS/Tranquil Green

# COMFORTS TO BRIGHTEN YOUR LIFE



34BLSK/Autumn Rose

ABOVE: The Kountry Star bedroom offers a queen-sized bed that flips up to reveal a spacious storage area underneath, individual reading lights and a deep wardrobe with compartmentalized shelving.

LEFT: The bathroom offers plenty of cabinet space, an easy-cleaning laminate countertop, a sink with a single-lever faucet and a tub/shower surround with a shower door.

BELOW: This bedroom's lighted, pullout vanity mirror provides a welcome touch of home.



37SLQS/Tranquil Green





A



B



C



D



E

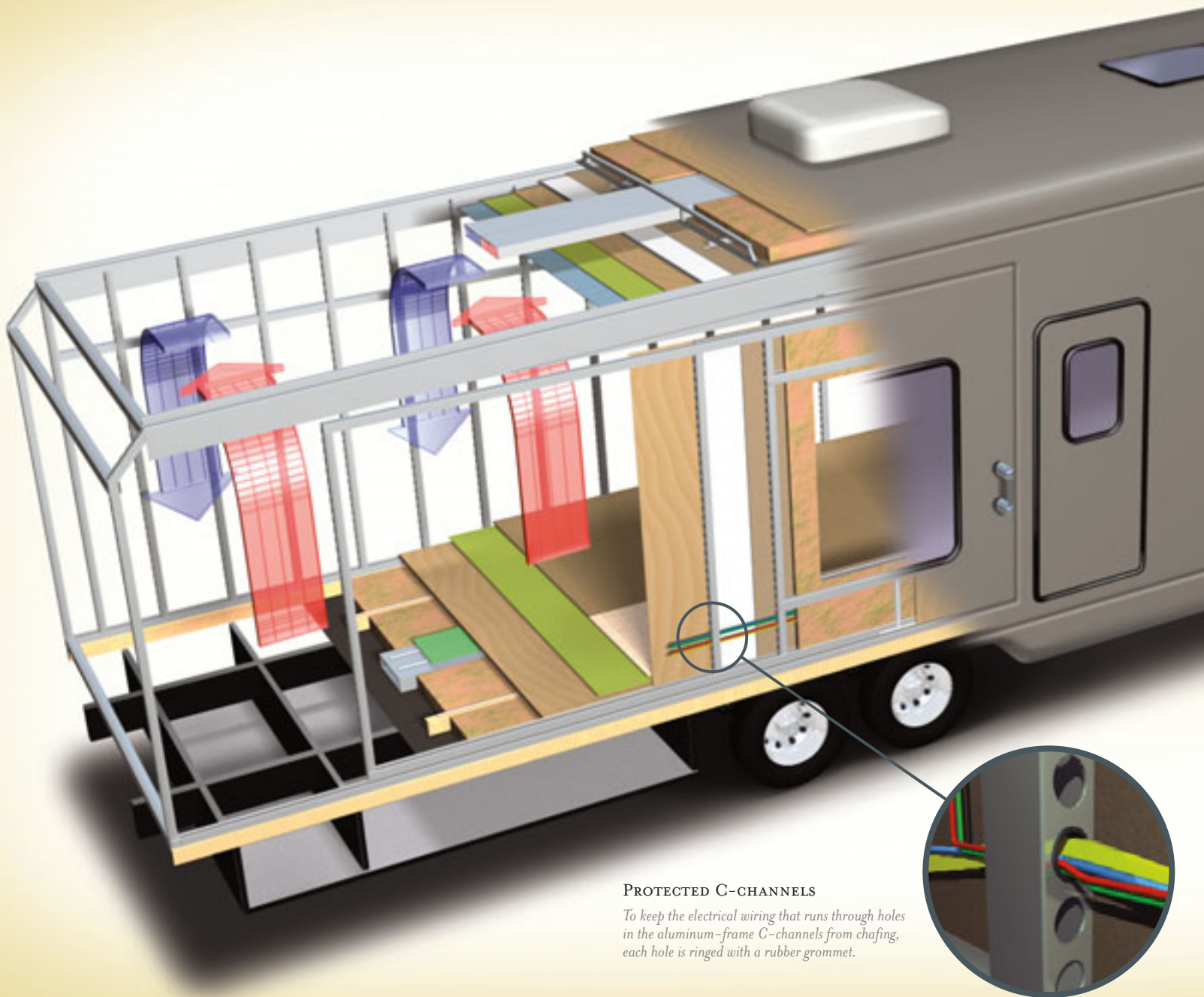
- A. The expansive basement pass-through storage offers open access to the front storage compartment.
- B. The newly redesigned end cap creates a more pleasing, unified exterior look.
- C. With its taller profile, the 2005 Kountry Star gives you more interior headroom.
- D. The front storage area comes complete with a pegboard to increase your storage options.
- E. Tandem axles, optional MOR/ryde® RE suspension and heavy-duty 16-inch wheels assure solid, stable road performance.

## THE NEWMAR KOUNTRY KLUB

As a Newmar owner, you qualify for membership in the Newmar Kountry Klub. Join your local chapter, and just look at the perks you'll enjoy: friendship, fun and adventure with other Newmar owners • rallies and caravans • special RV show events • discounts on RV services • a free monthly Klub magazine • Klub merchandise. And that's just for starters.

Join today. Call 877.639.5582, toll-free, or visit the Kountry Klub section of [newmarcorp.com](http://newmarcorp.com).





#### PROTECTED C-CHANNELS

*To keep the electrical wiring that runs through holes in the aluminum-frame C-channels from chafing, each hole is ringed with a rubber grommet.*

# NOTHING ENDURES LIKE A NEWMAR

Your Kountry Star Fifth Wheel is built to go the distance. And for good reason: It's assembled on the same production line, to the same exacting standards and with the same meticulous care, as all Newmar coaches. It also reflects Newmar's long history of product innovation and industry "firsts." For us, this is a matter of pride. And tradition. Of taking personal responsibility and building a product we ourselves would want to own.

For the third year in a row, Newmar has won RVDA's Quality Circle Award, given in accordance with the results of an annual RV dealer satisfaction survey. The survey asks RV dealers to evaluate manufacturers' performance in four major categories: Sales Support, Product Competitiveness, Service and Warranty Support. We are honored to receive this award, of course. It tells us that our efforts on behalf of our dealers and customers are appreciated. And we will continue working to keep their trust.





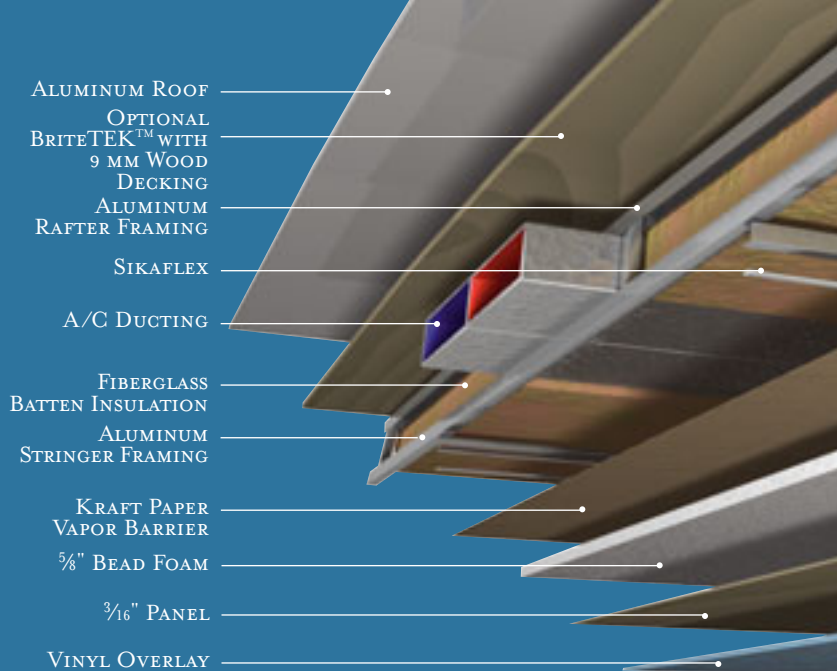


#### 16" ON-CENTER FRAMING

Just like a fine site-built residential home, your Newmar home is framed 16 inches on center, which allows the best placement of outlets, switches and other components.

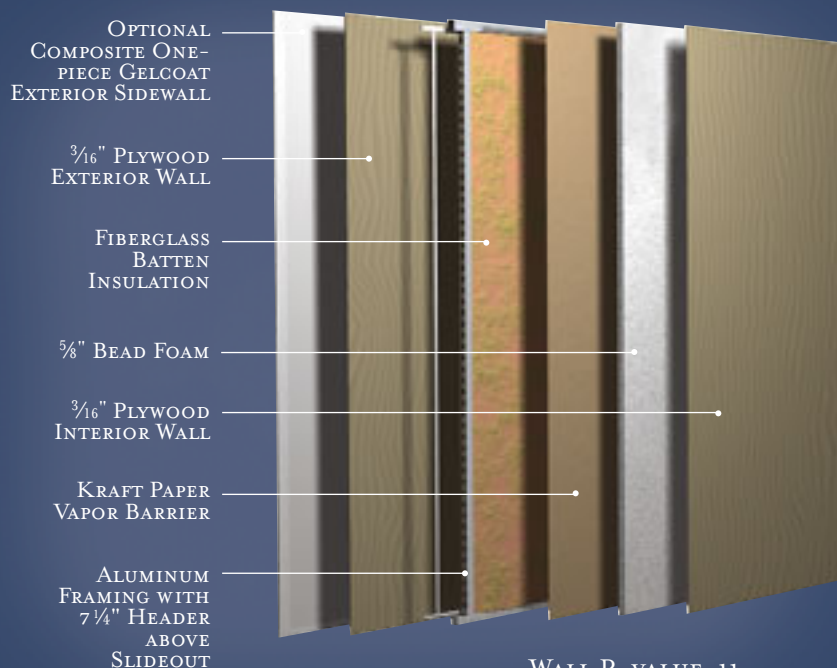
#### SIKAFLEX®

Sikaflex elastic adhesive is one of the strongest adhesives on the market today. It also serves as a sealant against air and water. And it helps dampen both sound and vibration.



ALUMINUM ROOF  
OPTIONAL  
BRITE TEK™ WITH  
9 MM WOOD  
DECKING  
ALUMINUM  
RAFTER FRAMING  
SIKAFLEX  
A/C DUCTING  
FIBERGLASS  
BATTEN INSULATION  
ALUMINUM  
STRINGER FRAMING  
KRAFT PAPER  
VAPOR BARRIER  
5/8" BEAD FOAM  
3/16" PANEL  
VINYL OVERLAY

ROOF R-VALUE=14



OPTIONAL  
COMPOSITE ONE-  
PIECE GELCOAT  
EXTERIOR SIDEWALL  
3/16" PLYWOOD  
EXTERIOR WALL  
FIBERGLASS  
BATTEN  
INSULATION  
5/8" BEAD FOAM  
3/16" PLYWOOD  
INTERIOR WALL  
KRAFT PAPER  
VAPOR BARRIER  
ALUMINUM  
FRAMING WITH  
7 1/4" HEADER  
ABOVE  
SLIDEOUT

WALL R-VALUE=11

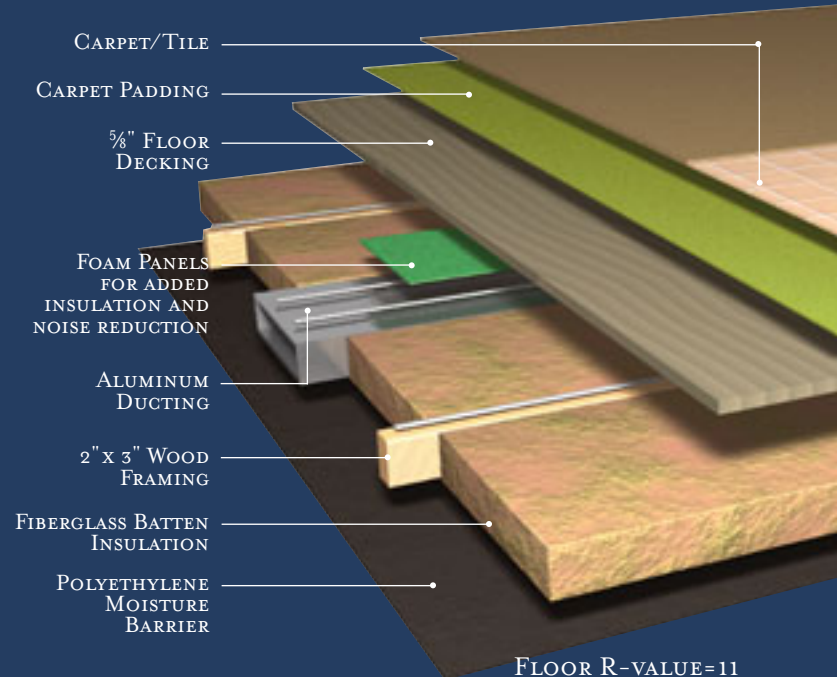
## TOTAL COMFORT™ NEWMAR CENTRAL AIR CONDITIONING

Newmar's Total Comfort Central Air Conditioning system—standard with every Newmar RV—is just like those found in most site-built homes. It's actually two separate, fully ducted systems: one to distribute incoming cool air, the other to quickly and effectively remove warm air from every living area.

## NEWMAR FREEDOM WARRANTY™

As proof of our commitment to you, we at Newmar back every Kountry Star Fifth Wheel with our industry-leading three-year limited warranty: The Newmar Freedom Warranty.\* Ask your dealer for details. Coverage this comprehensive is really liberating.

\* Please see a Newmar dealer for a copy of the complete terms of the Freedom Warranty.



CARPET/TILE  
CARPET PADDING  
5/8" FLOOR  
DECKING  
FOAM PANELS  
FOR ADDED  
INSULATION AND  
NOISE REDUCTION  
ALUMINUM  
DUCTING  
2" X 3" WOOD  
FRAMING  
FIBERGLASS BATTEN  
INSULATION  
POLYETHYLENE  
MOISTURE  
BARRIER

FLOOR R-VALUE=11



# INTERIOR & EXTERIOR COLOR OPTIONS



Oak Hardwood  
(standard)



Maple Cream



Ericsburg Cherry

*Upper cabinet doors shown. Real woods will have variations in grain and color. Natural wood products will darken over time.*



AUTUMN ROSE



SUMMER STRAW



SKY



TRANQUIL GREEN



AUTUMN ROSE



SUMMER STRAW



SKY



TRANQUIL GREEN



# FEATURES & SPECIFICATIONS

## STANDARD FEATURES

### AIR CONDITIONING & HEATING

- 13.5M Brisk Central Air Conditioner
- Two 30 Lb. LP Gas Bottles with Automatic Regulator
- LP Furnace with In-Floor Ducted Heat
- LP Leak Detector

### APPLIANCES & ACCESSORIES

- Range Hood with Light & Fan
- Hardwood Raised-Panel Refrigerator Front
- Cable TV Connection with RG 6 Coax
- Telephone Connection with One Phone Jack in Living Area
- Dometic® 2852 Refrigerator, 8 Cu. Ft.
- 12 Gallon Gas/Electric Water Heater — Direct-Spark Ignition
- AM/FM Radio with Cassette, CD Player
- 22" Microwave Oven
- Three-Burner Range with Glass Oven Door & Piezo Ignition
- Color TV in Entertainment Center
- TV Antenna with Power Booster and Two Interior Jacks

### CABINETS & FURNITURE

- Flexsteel® Furniture
- Dinette Table with Four Chairs
- Lifts on Bed Tops to Access Storage Area
- Oak Hardwood Raised-Panel Cabinet Doors
- Queen Bed
- Laminate Countertop with Porcelain Bowl in Bathroom
- Corian® Countertop with Undermounted Acrylic Sink in Kitchen
- Recliner — One, Where Shown on the Floorplan Drawing
- Drawers with Metal Guides

### ELECTRICAL FEATURES

- 30 Amp Electrical Service
- 55 Amp Converter
- 110 Volt and 12 Volt Lighting in Main Slideout
- 110 Volt Exterior Receptacle on Door Side
- 12 Volt Battery

### EXTERIOR FEATURES

- Exterior Painted Bottom Wrap
- Snaps for Fifth Wheel Jacks
- Rear Skid Bars with Bike-Rack Capability
- Stabilizer Jacks, One Pair
- Power Front Jacks

### INTERIOR FEATURES

- Carpet with High-Density Padding in Living Area and Bedroom Area
- Vinyl Floor in Kitchen, Foyer and Bathroom Area
- Quilted Bedspread with Reverse Sham and Accent Pillows
- Hardwood/Fabric Fascia on Living Area Slideout
- Mini-Blinds in Kitchen Area

- Day/Night Pleated Window Shades with Lambrequins
- Smoke Detector & 5 Bc Fire Extinguisher
- Vinyl-Covered Ceiling Panels

### PLUMBING / BATH FEATURES

- Demand Water System with SHURflo® Pump
- Thetford™ Aqua Magic Stool
- Monitor Panel
- Sewage Holding-Tank Rinse
- Sewage-Hose Holder, Easy-Access Flip-Down Tray
- Water-Heater Bypass System
- Tub/Shower Surround with Shower Door

### CONSTRUCTION FEATURES

- Gelcoated Fiberglass End Caps
- Gelcoated Fiberglass Exterior Sides
- Seamless Aluminum Roof
- 5/8" Foam Insulation Laminated in Sidewalls & Ceiling
- Enclosed Underbelly with Fiberglass Insulation
- Aluminum-Frame Sidewalls & Roof Construction, 16" on Center
- Roof R-value Rating: I4
- Sidewall R-value Rating: II
- Floor R-value Rating: II

### WINDOWS, AWNINGS & VENTS

- Power Vent with Wall Switch in Bathroom
- Fan-Tastic® Vent with Rain Sensor in Kitchen Area

### TOWABLE CHASSIS FEATURES

- Shock Absorbers

## OPTIONAL FEATURES

### AIR CONDITIONING & HEATING

- 13.5M or 15M Penguin Air Conditioner
- 15M Brisk Air Conditioner
- 15M Brisk Heat Pump Air Conditioner

### APPLIANCES & ACCESSORIES

- 22" Spacemaker® Microwave (5 Lb.)
- 30" Spacemaker® Convection Microwave & Three Burner Plate (13 Lb.)
- Washer/Dryer
- Ceiling Fan In Living Room Area (10 Lb.)
- Dometic® 2862 Refrigerator, 8 Cu. Ft. (14 Lb.)
- DVD Player
- Electric Fireplace (Available on some Floorplans)
- Entertainment Center TV Mounted on Pullout Swivel/Slide Tray
- Exterior TV Jack, on Door Side
- Satellite Prep-Phone, TV Jack and Receptacle
- Sony® Surround Sound System with VCR, DVD Player & Subwoofer (10 Lb.)
- Central Vac with Floor Port and Deluxe Tool Kit (27 Lb.)
- Dometic I292 Refrigerator, 12 Cu. Ft. (131 Lb.)
- Norcold® Four-Door Refrigerator (78 Lb.)
- U-Line Icemaker (62 Lb.)

### CABINETS & FURNITURE

- Maple Cream Cabinets
- Hide-a-Bed Sofa (27 Lb.)
- Ericsburg Cherry Cabinets
- King Bed on Some Floorplans
- Ultraleather Large Recliner (7 Lb.)
- Extra Recliner (114 Lb.)
- Adjustable Pullout Pantry Shelves (5 Lb.)
- Built-in Booth Dinette (23 Lb.)
- Luxurious Pillowtop Mattress (10 Lb.)

### ELECTRICAL FEATURES

- Battery Disconnect Switch (1 Lb.)
- 5.5 kW Onan® Generator with Auto Changeover and Battery (360 Lb.)
- 50 Amp Cord Reel (30 Lb.)
- 50 Amp Electrical Service (15 Lb.)
- 600 Watt Inverter, for Entertainment Center (10 Lb.)
- Exterior Security Lights, One Installed on Each Side (1 Lb.)
- Generator Prep, with Carbon Monoxide Detector (10 Lb.)

### EXTERIOR FEATURES

- Bike Rack Carrier (20 Lb.)
- Extra Stabilizer Jacks—One Pair (40 Lb.)
- Rear Ladder (14 Lb.)

### INTERIOR FEATURES

- Simulated Plank Floor in Kitchen and Foyer Area (30 Lb.)
- 12" Marble Look Floor Tile in Kitchen Area and Main Bathroom
- Flush Sink Covers (1 Lb.)
- Lined Drapes with Valances
- Woven Soft Touch Ceiling (30 Lb.)

### PLUMBING / BATH FEATURES

- Exterior Shower, Located on Off Door Side (2 Lb.)
- Fiberglass Tub/Shower for Master Bathroom (75 Lb.)

### CONSTRUCTION FEATURES

- BriteTEK™ Roof With 9MM Decking (237 Lb.)

### WINDOWS, AWNINGS & VENTS

- Carefree® Fiesta Side Awning (104 Lb.)
- Double-Pane, Tinted Safety-Glass Windows (110 Lb.)
- A&E® 9000 Side Awning (128 Lb.)
- A&E Bedroom and Living Area Slideout Awning
- Skylight in Bathroom, Located Above Tub/Shower

### TOWABLE FEATURES

- MOR/ryde® Rubber Equalizers (73 Lb.)
- MOR/ryde Rubber Equalizers with Disc Brakes (92 Lb.)
- Spare Tire Range, Mounted in Underbelly Lift Kit (73 Lb.)

In keeping with our tradition of bringing our customers the highest-quality products in the industry, Newmar works with the following manufacturers to supply components for our vehicles.

SONY

DIAMOND SHIELD

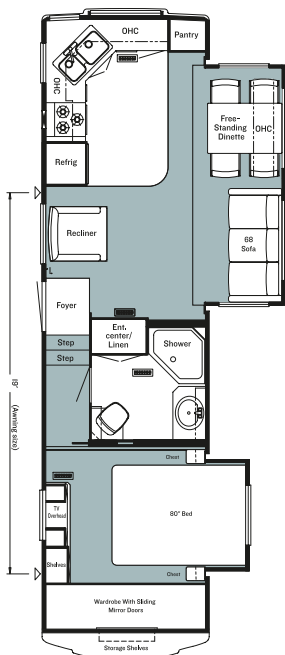
[www.diamond-shield.com](http://www.diamond-shield.com)

## FLOORPLAN SPECIFICATIONS

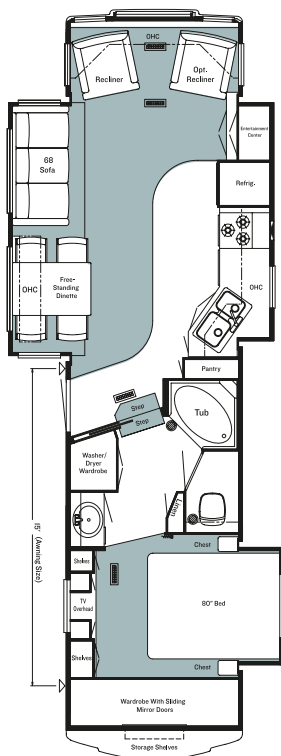
FLOORPLAN	TIRE SIZE	GAWR	GVWR	APP. LENGTH	APP. HEIGHT	WIDTH	APP. DRY WEIGHT	APP. HITCH WEIGHT	FRESH WATER	GREY	SEWAGE CAP.	APP. HITCH HEIGHT	HEAT CAP.
30RKCL	235/85R16-G	6,000 lb.	14,000 lb.	32' 04"	13' 01"	101"	11,138 lb.	2,116 lb.	75 gal.	92 gal.	50 gal.	47"	35,000 Btu
33KSFB	235/85R16-G	7,000 lb.	16,250 lb.	35' 03"	13' 01"	101"	12,670 lb.	2,407 lb.	75 gal.	92 gal.	50 gal.	47"	35,000 Btu
34BLSK	235/85R16-G	7,000 lb.	16,250 lb.	36' 00"	13' 01"	101"	12,462 lb.	2,492 lb.	75 gal.	82 gal.	40 gal.	47"	35,000 Btu
34BLWB	235/85R16-G	7,000 lb.	16,250 lb.	36' 06"	13' 01"	101"	12,735 lb.	2,356 lb.	75 gal.	92 gal.	50 gal.	47"	42,000 Btu
35DBSA	235/85R16-G	7,000 lb.	16,250 lb.	37' 06"	13' 01"	101"	12,305 lb.	2,215 lb.	75 gal.	92 gal.	92 gal.	47"	42,000 Btu
35DSSK	235/85R16-G	7,000 lb.	16,250 lb.	36' 11"	13' 01"	101"	12,844 lb.	2,312 lb.	75 gal.	50 gal.	92 gal.	47"	55,000 Btu
35LKSA	235/85R16-G	7,000 lb.	16,250 lb.	37' 01"	13' 01"	101"	12,945 lb.	2,330 lb.	75 gal.	82 gal.	40 gal.	47"	42,000 Btu
36BSKS	235/85R16-G	7,000 lb.	16,600 lb.	38' 08"	13' 01"	101"	13,270 lb.	2,654 lb.	75 gal.	97 gal.	55 gal.	47"	55,000 Btu
36BSPK	235/85R16-G	7,000 lb.	16,600 lb.	38' 04"	13' 01"	101"	13,420 lb.	2,504 lb.	75 gal.	97 gal.	55 gal.	47"	55,000 Btu
37SLQS	235/85R16-G	7,000 lb.	16,600 lb.	39' 03"	13' 01"	101"	13,510 lb.	2,567 lb.	75 gal.	97 gal.	55 gal.	47"	55,000 Btu
38RBFL	235/85R16-G	7,000 lb.	16,600 lb.	40' 05"	13' 01"	101"	13,846 lb.	2,631 lb.	75 gal.	97 gal.	55 gal.	47"	55,000 Btu
39CKDA	235/85R16-G	7,000 lb.	16,600 lb.	41' 02"	13' 01"	101"	12,878 lb.	2,575 lb.	75 gal.	82 gal.	40 gal.	47"	55,000 Btu



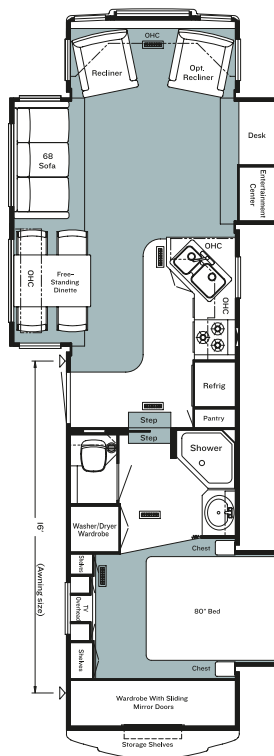
# FLOORPLANS & OPTIONS



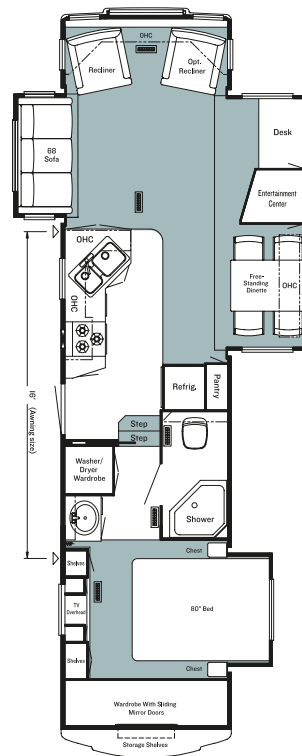
**KSF 30RKL**  
Options: None



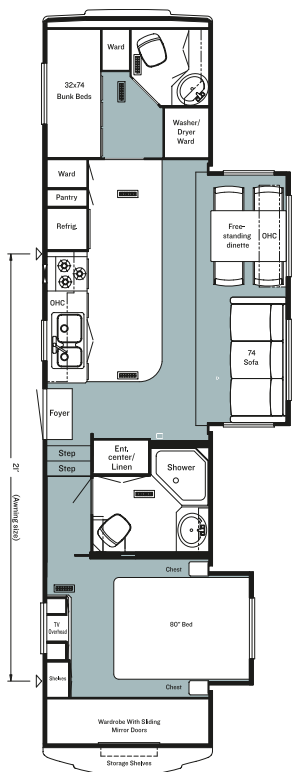
**KSF 33KSFB**  
Options: None



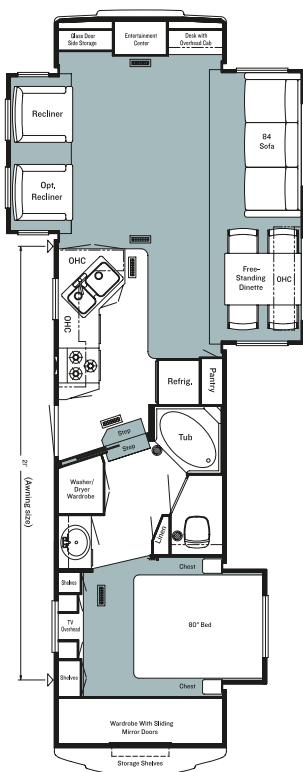
**KSF 34BLSK**  
Options: None



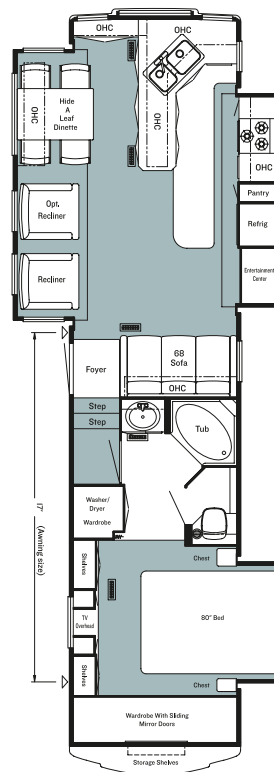
**KSF 34BLWB**  
Options: None



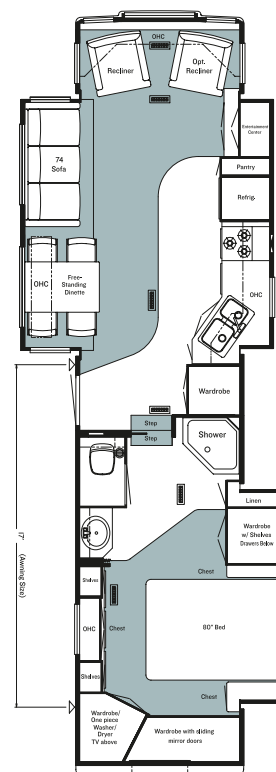
**KSF 35DBSA**  
Options: K130, K550



**KSF 35DSSK**  
Options: None

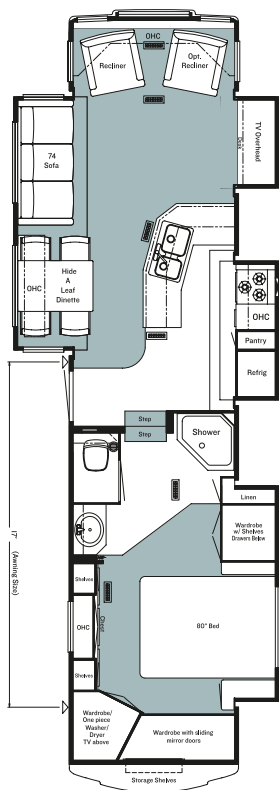


**KSF 35LKSA**  
Options: None

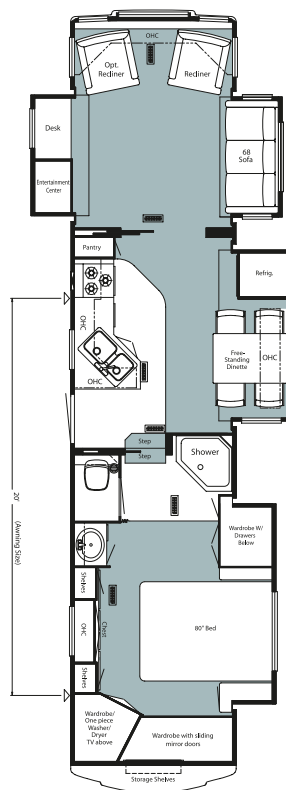


**KSF 36BSKS**  
Options: J335, K568, K632

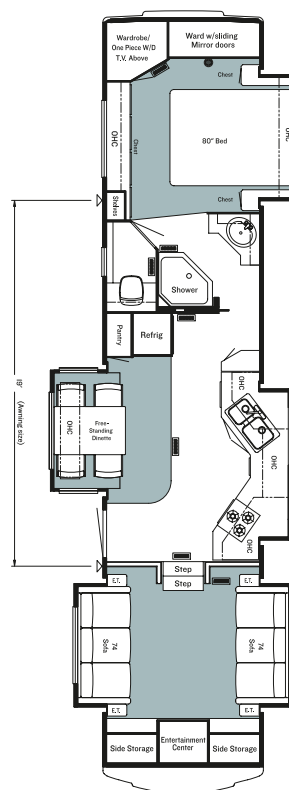




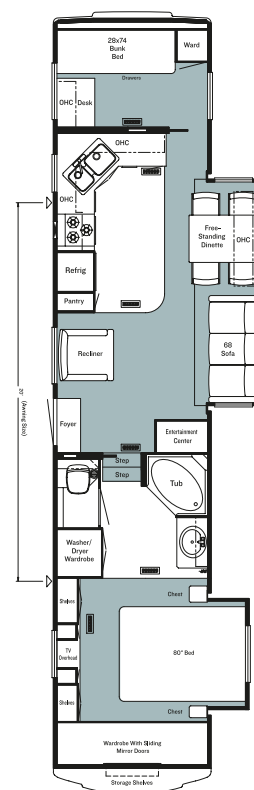
**KSFW 36BSPK**  
Options: J335, K568, K632



**KSFW 37SLQS**  
Options: J337, K632



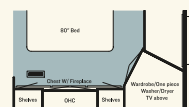
**KSFW 38RBFL**  
Options: K638



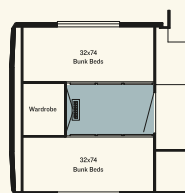
**KSFW 39CKDA**  
Options: None



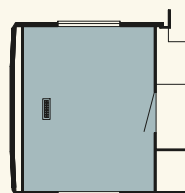
**J335**  
Fireplace in Lieu of Chest of Drawers  
KSFW: 36BSKS, 36BSPK



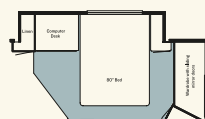
**J337**  
Fireplace in Lieu of Chest of Drawers  
KSFW: 37SLQS



**K130**  
Bunkhouse Bedroom  
KSFW: 35DBSA



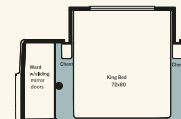
**K550**  
Delete Complete Rear Bedroom and Bath  
KSFW: 35DBSA



**K568**  
Computer Desk in Lieu of Wardrobe  
KSFW: 36BSKS, 36BSPK



**K632**  
King Bed  
KSFW: 36BSKS, 36BSPK, 37SLQS



**K638**  
King Bed  
KSFW: 38RBFL

## NEWMARCORP.COM

Visit our Web site. Here you'll easily access the most up-to-date Newmar product information, model specifications, floorplans and options. You'll also learn more about who we are, how we work and what we believe in. Become a registered user—for free—and you'll also get access to the latest event data, technical and service tips and the location of your nearest Newmar dealer. This isn't just our site—it's yours.

## THE NEWMAR FACTORY TOUR

We'd love to have you visit our state-of-the-art production facility in Nappanee, Indiana. Factory tours are given Monday through Friday at 10 a.m. and 1 p.m. (Indiana time). Pre-registration is not required but is helpful, since tour-group sizes may be limited from time to time. Please arrive 15 minutes before the hour and check in at the tour area that is located in Building Nine on Cheyenne Street. No open-toed sandals can be worn, and children under the age of eight are not allowed to take the tour.

For more information or to pre-register, please call 800.860.0086.





NEWMAR QUALITY: A WAY OF LIFE

NEWMAR CORPORATION  
355 N DELAWARE ST  
PO BOX 30  
NAPPANEE IN 46550-0030  
574-773-7791 Fax 574-773-2895  
[www.newmarcorp.com](http://www.newmarcorp.com)

Your Official Kountry Star Dealer: