

2005 | NORTHERN STAR DIESEL PUSHER
by Newmar



GIVING
SPACE TRAVEL
NEW MEANING

THE VASTNESS OF INTERSTELLAR SPACE IS OVERWHELMING. SO IS THE VAST INTERIOR OF THE NORTHERN STAR, NEWMAR'S NEWEST, MOST SPACIOUS DIESEL PUSHER MOTORHOME YET.

ITS ROOF IS A FULL 89 INCHES HIGH TO GIVE YOU A MORE OPEN, AIRY LIVING ENVIRONMENT—including a SLIDEOUT YOU CAN EASILY STAND UP IN. HUGE WINDOWS ADMIT LOTS OF LIGHT. AN ABUNDANCE OF HIGH-END STANDARDS AND OPTIONS MAKE TRAVEL LIVING MUCH MORE "EXPANSIVE." AND TALK ABOUT SPACE: WAIT TILL YOU SEE THE STORAGE CAPACITY, INSIDE AND OUT.

LOOKING TO ENLARGE YOUR LIFE? SET OFF ON A REAL "SPACE" ADVENTURE—ABOARD THE NORTHERN STAR.





Slideout

Lighting

*Window
Treatments*

A NEW FRONTIER IN COMFORT

Slideout

Exceptionally spacious living is yours with the Northern Star's living room slideout with full, stand-up height. It also comes complete with a long row of overhead cabinets.

Patterned, Textured Carpet

Plush comfort and the appeal of an elegant sculpted look are provided by this decidedly upscale Northern Star feature.

Lighting

Dramatic wall sconces with a clean, classic look put light where you need it—and lend ambiance to the main living area.

Window Treatments

The Northern Star's standard window treatments include lined and pleated day/night shades and tastefully styled lambrequins. Mini-blinds are standard in the kitchen area.

Patterned, Textured Carpet



LEFT: The Northern Star dry bar, available on most floorplans, gives you plenty of extra cabinet space as well as a Corian® countertop that's offset by an attractive, room-expanding mirror panel.

ABOVE: Handsome overhead built-in cabinetry is included to accommodate the living area's standard Sony® 24-inch flatscreen color TV, DVD, VCR and AM/FM stereo combo unit and Surround Sound with subwoofer.

BELOW: Most floorplans feature an Ultraleather L-Lounge Sofa in the Northern Star. The 66-inch L-Lounge below, featured in the 3934 floorplan, comes with an incliner and swing-out door for extra storage.



3934/Café Latte

Innovative Concept #19:

66-inch L-Lounge with Incliner & Storage (3934 Floorplan)





Large-capacity Refrigerator

Cabinet Space

Generous Countertops

ALL THE INGREDIENTS FOR HAPPINESS

Easy Meal Preparation

Wherever you go, home-cooked meals are easy to prepare in the thoughtfully laid out, fully accessorized Northern Star kitchen.

Cabinet Space

You have more than enough room for your favorite cooking utensils and provisions. These optional Coastal Cherry Hardwood cabinets feature attractive raised-panel arched doors.

Generous Countertops

Corian® countertop space is generous and features a pullout cutting board and flip-up extension provided next to the sink.

Large-capacity Refrigerator

The 13.8-cubic-foot Dometic® SideWise refrigerator features an icemaker, auto defrost and a striking brushed aluminum door finish.



3934/Café Latte



3933/Island Green

ABOVE: Standard is a three-burner recessed range with a Corian® bi-fold cover that expands countertop space... while the 30-inch convection microwave expands your cooking capabilities.

RIGHT: The standard hidden-leaf dinette table is complemented by two plushly upholstered freestanding sidechairs and two upholstered folding chairs, creating a pleasant, roomy setting for meals, conversation or gaming.

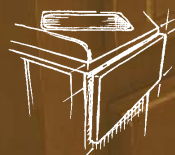
BELOW: The undermounted acrylic sink features flush sink covers, a pullout spray faucet, and a filtered drink dispenser.



3934/Café Latte

Innovative Concept #23:
Flip-up Countertop

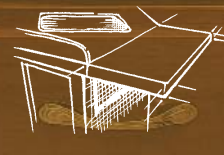
1.



2.



3.





Overhead Cabinets

Individual Reading Lights

Luxurious Bedding

ROOM FOR PEACE AND QUIET

Luxurious Bedding

The Northern Star king or queen-sized bed, depending on floorplan, with luxurious pillowtop mattress, is enhanced with a quilted headboard and bedspread, a reverse sham and accent pillows. The bed lifts up on its wide base, giving you access to a spacious storage area underneath.

Individual Reading Lights

On both sides of the bed, individual reading lights are mounted well within reach above the headboard.

Overhead Cabinets

These convenient cabinets above the headboard let you stow more of your favorite clothing, bedding or personal effects.



ABOVE: The standard ceiling fan helps circulate air in the bedroom.

RIGHT: The bathroom vanity offers plenty of cabinet space, an easy-cleaning Corian® countertop and a porcelain sink with a single-lever faucet.

BELOW: Lots of deep drawers and cabinets let you bring what you need for the long haul. A standard Sony® 20-inch flatscreen color TV is built into the cabinetry, high enough for easy viewing. And a separate wardrobe is prepped for an optional washer/dryer unit.



3933/Island Green



3934/Café Latte



A



B

A. The Northern Star cab is truly the "Driver's Command Center." All dashboard gauges and controls are well within view and reach. Other top cab features include a tilt-and-telescopic VIP SMART wheel, adjustable pedals and a color rearview back-up monitor with optional navigation.

B. Cab seating features Ultraleather front seats with power lumbar support, six-way power adjustment and Ergo-Flex arms to keep you comfortable mile after mile. The passenger seats come oversized with a foot rest for added comfort.

C. The Northern Star's VIP SMART wheel places commonly used controls, such as wipers and lights, on the steering wheel for ease of use.

D. To increase your driving pleasure, the cab comes complete with this dash-mounted Sony® AM/FM radio and CD player with optional XM Satellite Radio capability.



C



D

E. Northern Star offers an optional exterior entertainment center including a 22-inch flatscreen LCD color TV mounted on a swing-out arm, Sony® AM/FM stereo with CD player and two speakers, all of which are contained in a separate storage compartment.

F. The expansive basement pass-through storage is not only lighted but finished with a protective cargo liner.

G. Optional slideout storage trays make it easier to stow and access smaller items.

H. This sleek-looking tow guard protects the coach and tow-vehicle from stones and debris thrown up from the road.

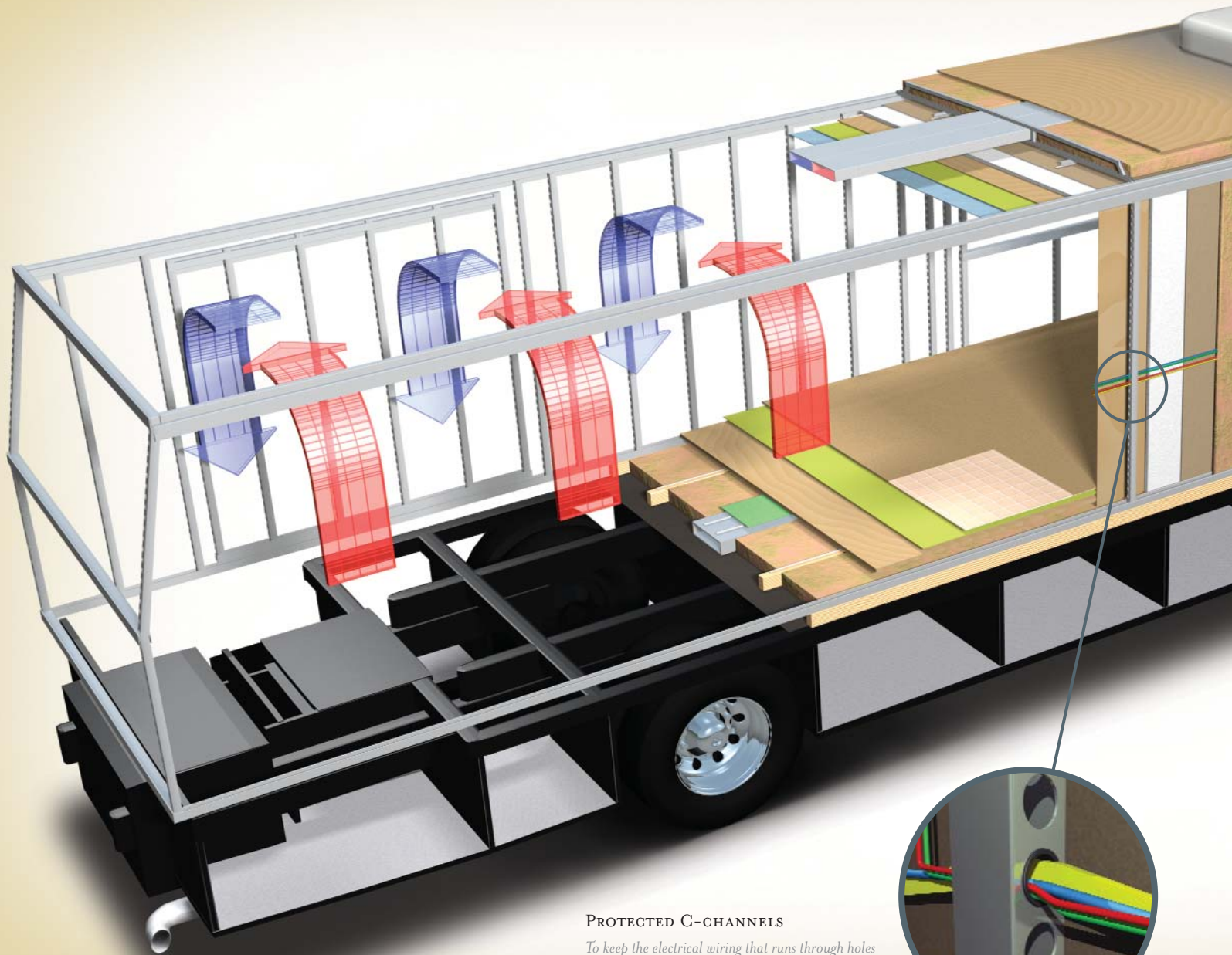
I. The Northern Star's powerful 7.5 kW Onan® Quiet Series diesel generator is located in a convenient front pullout compartment so that it's easily accessible.



THE NEWMAR KOUNTRY KLUB

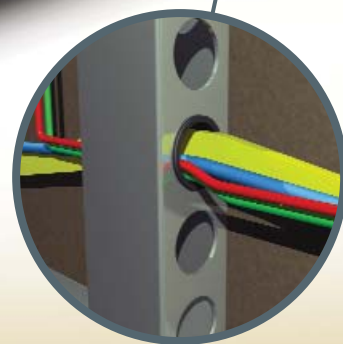
As a Newmar owner, you qualify for membership in the Newmar Kountry Klub. Join your local chapter, and just look at the perks you'll enjoy: friendship, fun and adventure with other Newmar owners • rallies and caravans • special RV show events • discounts on RV services • a free monthly Klub magazine • Klub merchandise. And that's just for starters.

Join today. Call 877.639.5582, toll-free, or visit the Kountry Klub section of newmarcorp.com.



PROTECTED C-CHANNELS

To keep the electrical wiring that runs through holes in the aluminum-frame C-channels from chafing, each hole is ringed with a rubber grommet.

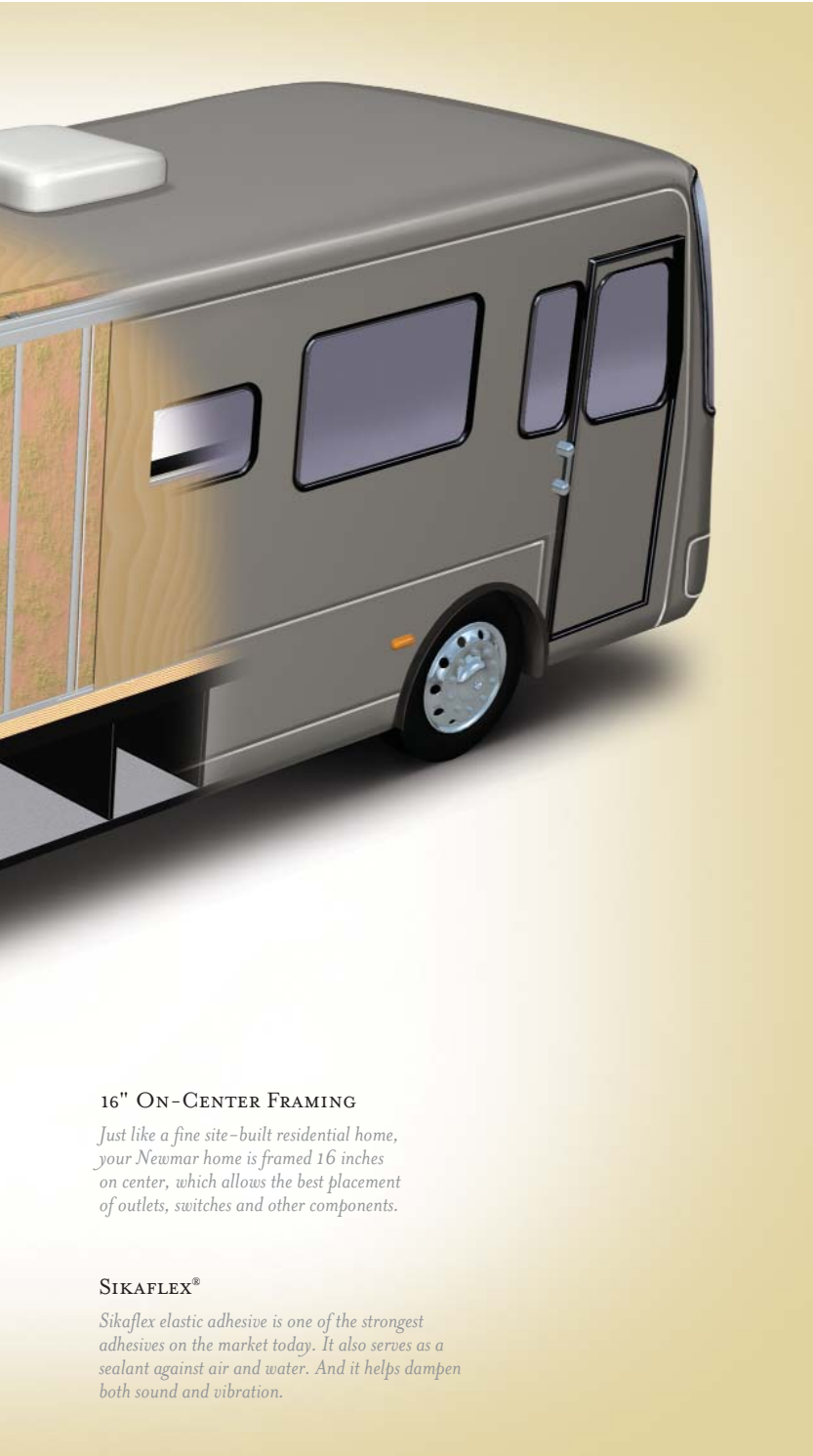


NOTHING ENDURES LIKE A NEWMAR

Your Northern Star Diesel Pusher Motorhome is built to go the distance. And for good reason: It's assembled on the same production line, to the same exacting standards and with the same meticulous care, as all Newmar motorhomes. It also reflects Newmar's long history of product innovation and industry "firsts." For us, this is a matter of pride. And tradition. Of taking personal responsibility and building a product we ourselves would want to own.

For the third year in a row, Newmar has won RVDA's Quality Circle Award, given in accordance with the results of an annual RV dealer satisfaction survey. The survey asks RV dealers to evaluate manufacturers' performance in four major categories: Sales Support, Product Competitiveness, Service and Warranty Support. We are honored to receive this award, of course. It tells us that our efforts on behalf of our dealers and customers are appreciated. And we will continue working to keep their trust.





16" ON-CENTER FRAMING

Just like a fine site-built residential home, your Newmar home is framed 16 inches on center, which allows the best placement of outlets, switches and other components.

SIKAFLEX®

Sikaflex elastic adhesive is one of the strongest adhesives on the market today. It also serves as a sealant against air and water. And it helps dampen both sound and vibration.

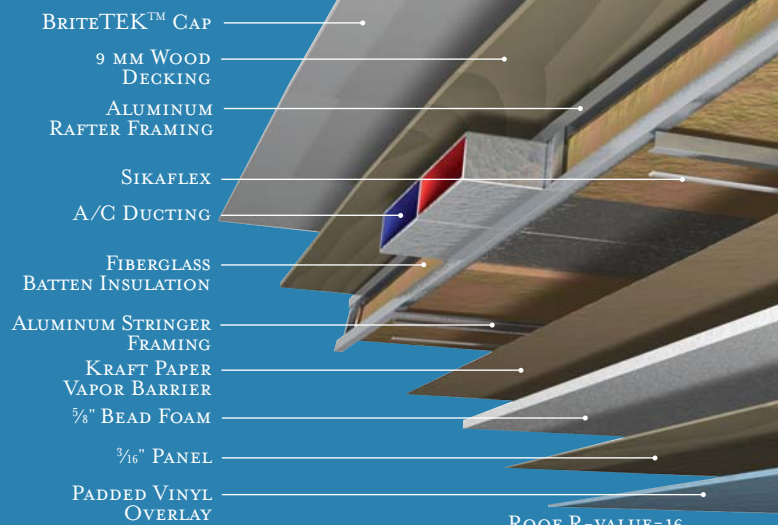
TOTAL COMFORT™ NEWMAR CENTRAL AIR CONDITIONING

Newmar's Total Comfort Central Air Conditioning system—standard with every Newmar RV—is just like those found in most site-built homes. It's actually two separate, fully ducted systems: one to distribute incoming cool air, the other to quickly and effectively remove warm air from every living area.

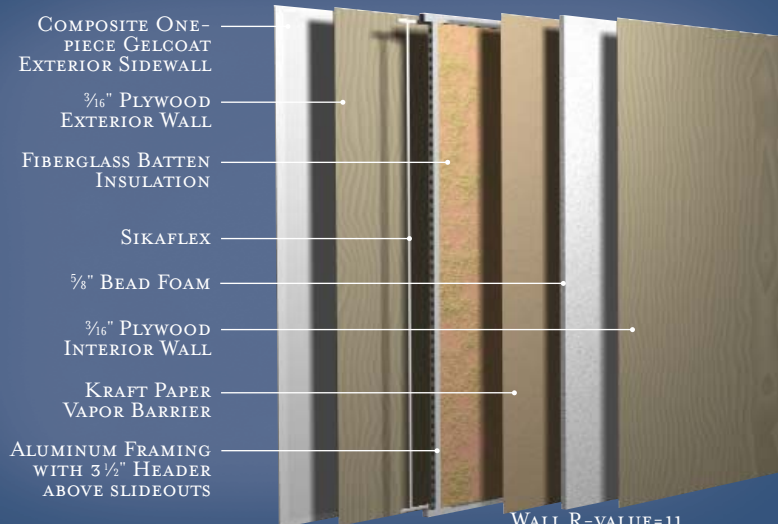
NEWMAR FREEDOM WARRANTY™

As proof of our commitment to you, we at Newmar back every Northern Star we make with our industry-leading three-year/50,000-mile limited warranty: The Newmar Freedom Warranty.* Ask your dealer for details. Coverage this comprehensive is really liberating.

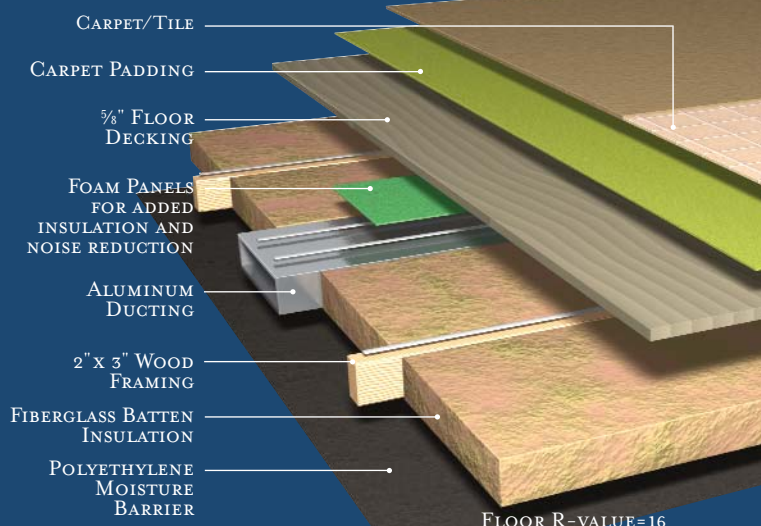
* Please see a Newmar dealer for a copy of the complete terms of the Freedom Warranty.



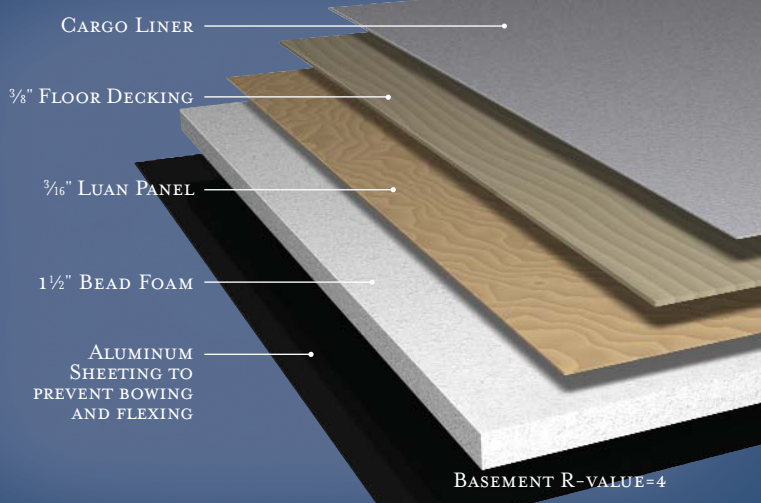
ROOF R-VALUE=16



WALL R-VALUE=11



FLOOR R-VALUE=16



BASEMENT R-VALUE=4

INTERIOR & EXTERIOR COLOR OPTIONS



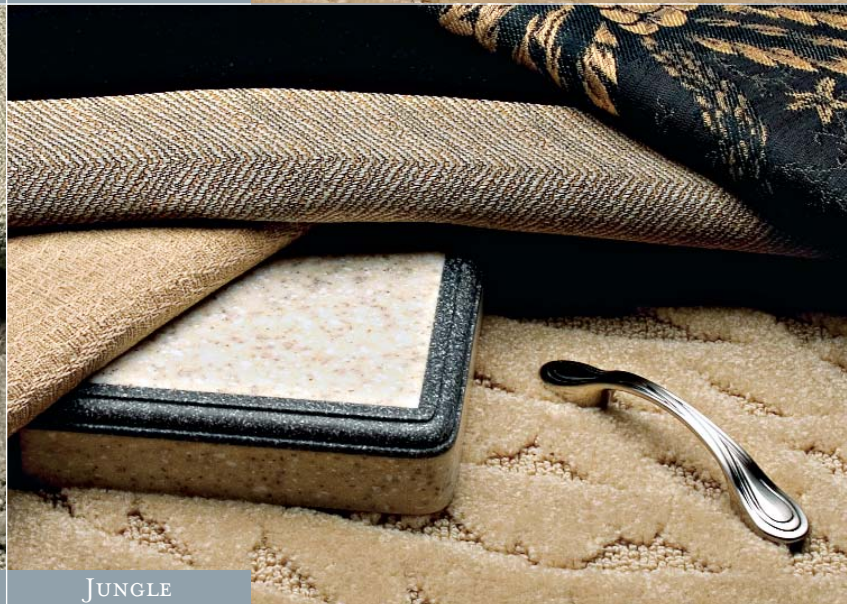
THUNDER GREY



CAFÉ LATTE



ISLAND GREEN



JUNGLE



PEARL GREY



Oak Hardwood
(standard)



Coastal Cherry Hardwood



Summer Maple Hardwood



Velvet Cherry Hardwood

*Upper cabinet doors shown. Real woods will have variations in grain and color.
Natural wood products will darken over time.*



THUNDER GREY



CAFÉ LATTE



ISLAND GREEN

FULL-PAINT MASTERPIECE FINISH™

Newmar's Full-Paint Masterpiece Finish creates an exterior of stunning beauty and incredible endurance—a true work of art. As industry leaders in applying full body paint to motorhome coaches, we at Newmar are pleased to offer the Full-Paint Masterpiece Finish as a Northern Star Diesel Pusher Motorhome standard.

DIAMOND SHIELD

Diamond Shield Front Paint Protection Film is standard on all Northern Star Diesel Pusher Motorhomes. Diamond Shield Film protects the front against stone chips, scratches and bug acids. Diamond Shield Film is optically clear with a high-gloss designed to keep the Full-Paint Masterpiece Finish looking new.

FEATURES

STANDARD FEATURES

MOTORIZED CHASSIS FEATURES

- Freightliner® Chassis — 350 HP
- Accubrite Aluminum Wheels
- Anti-Lock Braking System
- Back-Up Alarm
- Cruise Control
- Recessed Fuel Fills with Cross-over to Fill from Either Side
- Tilt & Telescope Steering Wheel

AIR CONDITIONING & HEATING

- Two 13.5 M Penguin™ Heat Pump Air Conditioners
- Air Conditioning Drain Line Through Sidewall
- Dash Heater & High-Output Air Conditioner
- LP Furnace with In-Floor Ducted Heat
- LP Leak Detector
- Wall-Mounted Sensors for Heating and Air Conditioning

APPLIANCES & ACCESSORIES

- Sony® Flatscreen Color TV in Living Area
- Sony Surround Sound System with VCR, DVD Player & Subwoofer
- 30" Convection Microwave Oven with Three-Burner Cooktop
- Range Cover of Matching Countertop Material
- Dometic® 1402 SideWise Refrigerator with Auto Defroster and Icemaker, 13.8 Cu. Ft.
- Sony Flatscreen Color TV in Bedroom Area
- 12 Gal. Gas/Electric Water Heater — Direct-Spark Ignition
- Roof-Mounted Air Horns
- AM/FM Dash Radio with CD player
- Cable TV Connection with RG 6 Coax
- Carbon Monoxide Detector
- Ceiling Fan in Bedroom
- Exterior TV Jack on Door Side
- Interior Rearview Mirror with Electronic Compass and Temperature Display
- On/Off Switch for Bedroom Speakers
- Prep for Compact Washer/Dryer
- Rearview Monitor System
- Satellite Prep Phone, TV Jack and Receptacle
- Telephone Connection with Phone Jacks in Living and Dash Area
- TV Antenna with Power Lift, One Exterior & Two Interior Jacks

CABINETS & FURNITURE

- Oak Hardwood Cabinets with Raised-Panel Arched Doors
- Swivel Rocker Recliner or L-Lounge — See Floorplan Drawing
- Ultraleather Front Seats with Six-Way Power, Power Lumbar, Ergo-Flex Arms & Oversize Passenger Seat w/Footrest
- Flexsteel® Furniture
- Hide-a-Bed Sofa with Air Mattress where Floorplan is Shown with a 74" Sofa
- Carpet on Wardrobe Bottoms with Pearl Cream Headliner on Shelves and Overhead Cabinets
- Corian® Countertop with Porcelain Bowl in Bathroom
- Countertop Extension — Standard on Most Floorplans
- Drawers with Metal Guides
- Hidden-Leaf Dinette Table with Four Chairs (Two Fixed, Two Folding)
- Lifts on Bed Top to Access Storage Area
- Luxurious Pillowtop Mattress
- Molded Silverware Divider Tray
- Corian Countertop in Kitchen with Undermount Acrylic Sink and Flush Sink Covers
- Storage Shelves Recessed into Rear Cap

ELECTRICAL FEATURES

- Four 6 Volt House Batteries
- Battery Disconnect for House Batteries
- 7.5 kW Onan® Quiet Series Diesel Generator
- 110 Volt and 12 Volt Lighting to Main Slideout
- 110 Volt Exterior Receptacle on Door Side
- 5 Watt Solar Panel to Charge Chassis Battery
- 50 Amp Electrical Service with Flexible Cord
- 75 Amp Converter
- Emergency Engine Start Switch
- Exterior Security Lights, One Installed on Each Side
- Fluorescent Lights in Ceiling and Overhead Cabinets
- ICC Light Flasher Switch
- Interior Courtesy Lights
- Lights in Exterior Storage Areas Controlled by an Interior Master Switch
- Lights in Wardrobes with Automatic Switches
- Midship Side Turn Signals
- 600 Watt Inverter for Living Area and Bedroom TV
- Recessed Docking Lights
- Slideout-Information Voice Module
- Switched Receptacle for Engine-Block Heater
- Two 12 Volt Auxiliary Receptacles on Dashboard

EXTERIOR FEATURES

- Full-Paint Masterpiece Finish™ with Diamond Shield Front Protective Film
- Convex Exterior Mirrors with Remote Control and Defrost
- Exterior Storage Compartments Finished with Cargo Liner
- Gas Struts on Exterior Compartment Doors
- Hitch for Towing Car, with Two Extra 14-Gauge Wires for Customer Use — 10,000 Lb. Rating
- Hydraulic Leveling Jacks with Touch-Manual Control and Air Dump
- Mud Flaps
- Rear Protective Tow Guard with Stainless Steel Newmar Name Cutout
- Undercoating

INTERIOR FEATURES

- Carpeting with High-Density Padding in Living Room and Bedroom Areas
- Simulated Ceramic Floor in Kitchen, Bathroom and Entrance-Door Area
- Hardwood/Fabric Fascia on Living Area Slideout
- Interior Assist Handle at Main Entrance Door
- Lined Day/Night Pleated Window Shades & Lambrequins
- Mini-Blinds in Kitchen Area
- Padded Vinyl Ceiling
- Quilted Bedspread with Reverse Sham and Accent Pillows
- Smoke Detector & 10 Bc Fire Extinguisher
- Sun Shades on Driver and Passenger Side Windows

PLUMBING/BATH FEATURES

- Bath Accessories — Two Towel Bars, Tissue Holder and Robe Hook
- Demand Water System with SHURflo® Pump
- Exterior Shower, Located on Off-Door Side
- Fiberglass Tub/Shower with Glass Shower Door
- SeaLand™ 500+ China Stool
- Sewage Holding-Tank Rinse
- Water Filter with Drink Dispenser at Kitchen Sink
- Water-Heater Bypass System

- Water-Pump Switches Located in Bathroom, above Entrance Door, and on Exterior, near Gate Valves

CONSTRUCTION FEATURES

- BriteTEK™ Roof with 9 MM Decking
- Gelcoated Fiberglass End Caps
- Gelcoated Fiberglass Exterior Sides
- 5/8" Foam Insulation Laminated in Sidewalls & Ceiling
- Aluminum-Frame Sidewalls & Roof Construction, 16" on Center
- Power Lock Arms on All Slideout Rooms
- Roof R-value Rating: I6
- Sidewall R-value Rating: II
- Floor R-value Rating: I6
- Basement R-value Rating: 4

WINDOWS, AWNINGS & VENTS

- Double-Pane, Tinted Safety-Glass Windows
- Automatic Entrance-Door Step
- Fan-Tastic® Vent in Bathroom above Tub/Shower Area
- Fan-Tastic Vent with Rain Sensor in Bathroom
- Fan-Tastic Vent with Rain Sensor in Kitchen Area
- A&E® Weather Pro Power Side Awning
- A&E 9000 Window Awnings on Bedroom & Slideout Windows
- A&E Oasis Power Front Entrance-Door Awning
- A&E Slideout Awnings
- Front Entry Door with Power Flush Stepwell Cover
- Lighted Acrylic Assist Handle at Entrance Door
- Cockpit Overhead Ventilation System

OPTIONAL FEATURES

APPLIANCES & ACCESSORIES

- 100 Lb. Capacity Norcold® Freezer on Pullout Tray (113 Lb.)
- Navigation System (12 Lb.)
- Norcold Four Door Refrigerator with Icemaker & Drink Dispenser (50 Lb.)
- Compact Two Piece Washer & Dryer (210 Lb.)
- XM Satellite Radio Capability (2 Lb.)
- 32" LCD Color TV in Front Dash Overhead
- External Entertainment Center with 22" LCD TV & AM/FM CD Radio (132 Lb.)

CABINETS & FURNITURE

- Velvet Cherry Hardwood Cabinets
- Coastal Cherry Hardwood Cabinets
- Summer Maple Hardwood Cabinets
- Combination Desk/Dinette Table

ELECTRICAL FEATURES

- 2000 Watt Inverter (50 Lb.)

EXTERIOR FEATURES

- One-Piece Molded-Fiberglass Roof with 9 MM Decking (80 Lb.)
- Large Chrome Exterior Mirrors (5 Lb.)

INTERIOR FEATURES

- Power-Activated Sun Visors
- Ceramic Floor Tile in Bath, Kitchen and Entrance Door Area (185 Lb.)

PLUMBING/BATH FEATURES

- Water Filter, for Entire Unit (2 Lb.)

SPECIFICATIONS

FLOORPLAN SPECIFICATIONS

FLOORPLAN	APP. OVERALL LENGTH	WIDTH	APP. OVERALL HEIGHT	INTERIOR WIDTH	INTERIOR HEIGHT	GREY	SEWAGE	WATER	LP	FURNACE	WATER HEATER
NSDP 3930	39' 05"	101.5"	12' 11"	95.5"	89"	65 gal.	45 gal.	105 gal.	32 gal.	42,000 Btu	12 gal.
NSDP 3931	39' 05"	101.5"	12' 11"	95.5"	89"	65 gal.	45 gal.	105 gal.	32 gal.	42,000 Btu	12 gal.
NSDP 3932	39' 05"	101.5"	12' 11"	95.5"	89"	65 gal.	45 gal.	105 gal.	32 gal.	42,000 Btu	12 gal.
NSDP 3933	39' 05"	101.5"	12' 11"	95.5"	89"	65 gal.	45 gal.	105 gal.	32 gal.	42,000 Btu	12 gal.
NSDP 3934	39' 05"	101.5"	12' 11"	95.5"	89"	65 gal.	45 gal.	105 gal.	32 gal.	42,000 Btu	12 gal.

FREIGHTLINER® CHASSIS INFORMATION

FLOORPLAN	ENGINE HP	AXLE RATIO	FUEL CAP.	WHEELBASE	*FRONT GAWR	*REAR GAWR	*GVWR	*GCWR	APP. UVW	APP. NCC
NSDP 3930	350	4.78	100 gal.	252"	12,000 lb.	19,000 lb.	31,000 lb.	41,000 lb.	24,691 lb.	6,309 lb.
NSDP 3931	350	4.78	100 gal.	252"	12,000 lb.	19,000 lb.	31,000 lb.	41,000 lb.	24,701 lb.	6,299 lb.
NSDP 3932	350	4.78	100 gal.	252"	12,000 lb.	19,000 lb.	31,000 lb.	41,000 lb.	24,711 lb.	6,289 lb.
NSDP 3933	350	4.78	100 gal.	252"	12,000 lb.	19,000 lb.	31,000 lb.	41,000 lb.	25,111 lb.	5,889 lb.
NSDP 3934	350	4.78	100 gal.	252"	12,000 lb.	19,000 lb.	31,000 lb.	41,000 lb.	23,952 lb.	7,048 lb.

Lengths, Heights, Widths and Dry Weights are approximate. Weight will vary based on optional equipment added to the above base weight.

GAWR: Gross Axle Weight Rating is the maximum permissible weight for an axle.

GVWR: Gross Vehicle Weight Rating is the maximum permissible weight of a fully loaded motorhome.

GCWR: Gross Combination Weight Rating is the value specified by the manufacturer of the vehicle as the maximum allowable loaded weight of this motorhome and any towed trailer or towed vehicle.

UVW: Unloaded Vehicle Weight is the weight of this motorhome as built at the factory with full fuel, engine oil and coolants. The UVW does not include cargo, fresh water, LP gas or dealer-installed accessories.

NCC: Net Carrying Capacity is the maximum weight of all occupants, including the driver, personal belongings, food, fresh water, waste water, LP gas, tools, tongue weight of towed vehicle, dealer-installed accessories, etc., that can be carried by the motorhome.

* Specifications supplied by chassis manufacturer.

In keeping with our tradition of bringing our customers the highest-quality products in the industry, Newmar works with the following manufacturers to supply components for our vehicles.

SONY.

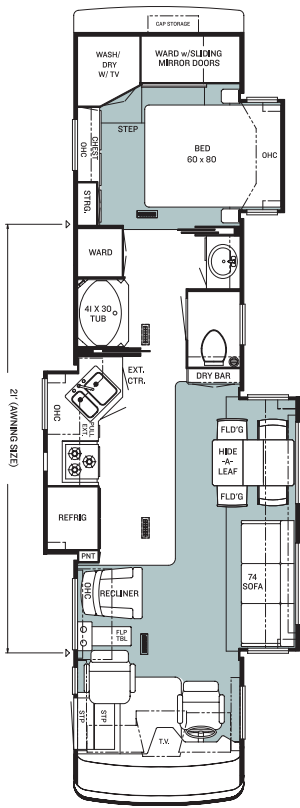
Dometic® The Sign of Comfort

www.dometic.com

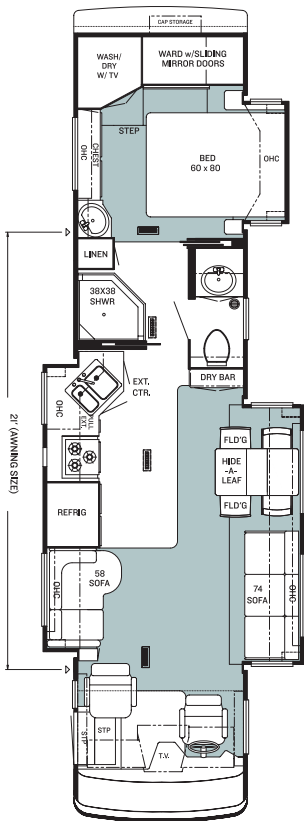
DIAMOND SHIELD

www.diamond-shield.com

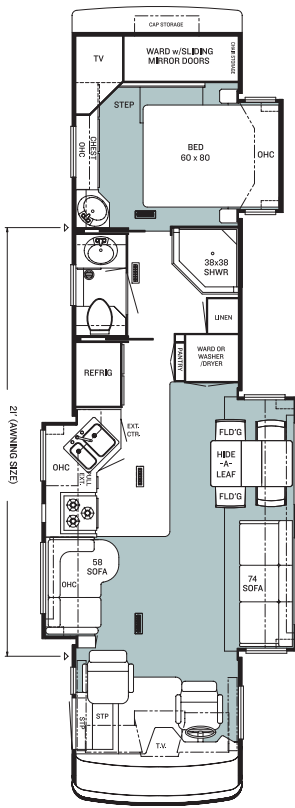
FLOORPLANS



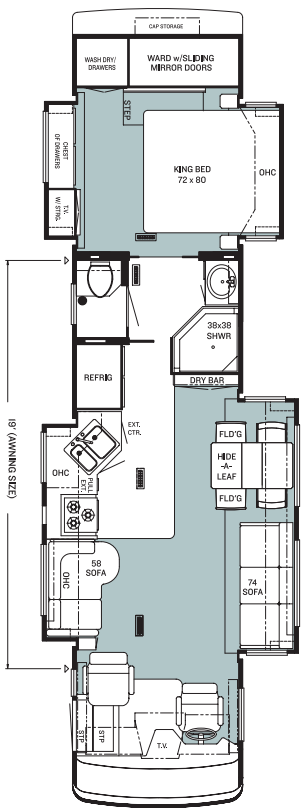
NSDP 3930
Options: K125



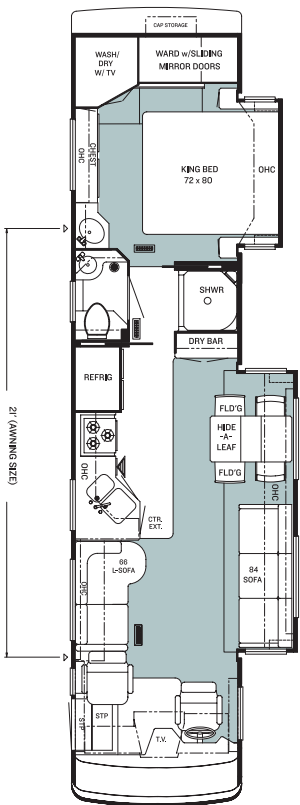
NSDP 3931
Options: K125, K276



NSDP 3932
Options: K125

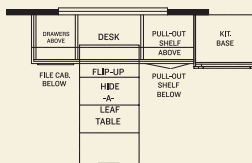


NSDP 3933
Options: K125



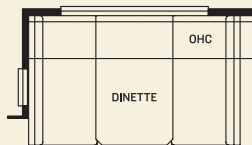
NSDP 3934
Options: K125, K276, K615

FLOORPLAN OPTIONS

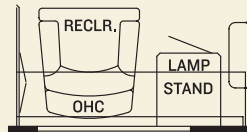


K125
Combination Desk /
Dinette

NSDP: 3930, 3931,
3932, 3933, 3934



K276
Booth Dinette
NSDP: 3931, 3934



K615
Freestanding Recliner
with Lampstand
NSDP: 3934

NEWMARCORP.COM

Visit our Web site. Here you'll easily access the most up-to-date Newmar product information, model specifications, floorplans and options. You'll also learn more about who we are, how we work and what we believe in. Become a registered user—for free—and you'll also get access to the latest event data, technical and service tips and the location of your nearest Newmar dealer. This isn't just our site—it's yours.

THE NEWMAR FACTORY TOUR

We'd love to have you visit our state-of-the-art production facility in Nappanee, Indiana. Factory tours are given Monday through Friday at 10 a.m. and 1 p.m. (Indiana time). Pre-registration is not required—but is helpful, since tour-group sizes may be limited from time to time. Please arrive 15 minutes before the hour and check in at the tour area that is located in Building Nine on Cheyenne Street. No open-toed sandals can be worn, and children under the age of eight are not allowed to take the tour. For more information or to pre-register, please call 800.860.0086.



NEWMAR QUALITY: A WAY OF LIFE

NEWMAR CORPORATION
355 N DELAWARE ST
PO BOX 30
NAPPANEE IN 46550-0030
574-773-7791 Fax 574-773-2895
www.newmarcorp.com

Your Official Northern Star Dealer: