

2006

# DUTCH STAR

DIESEL PUSHER

*by Newmar*









We're making memories.  
One at a time.

Sure, we love to travel.

And new experiences? Bring them on.

But the quiet times when we talk about our journeys  
are what make this life so special.

Dutch Star brightens even the quiet moments.





#### Your Dutch Star Kitchen

Built-in appliances, generous cabinets, Corian® countertops and undermounted sinks with single-lever faucets. All this and more helps make meal prep a breeze.



#### Total Comfort

In select floorplans, our 72-inch leather/vinyl L-lounge has a relaxing incliner section and a large storage drawer in the base. Enjoy meals, board games or conversations at the freestanding oval-tabled dinette.



## Newmar's legacy lives on in new ways.

Dutch Star continues to lead the way in power, performance and personality, providing a wealth of amenities, wide-open living areas and lots of high-end options. There's plenty of innovation here—and details that make RV living come alive. People trust Newmar for this. It's our legacy to each new generation of RV enthusiasts.

*Richard E. Parks*

Richard E. Parks  
President, Newmar Corporation







### Wide, Angled Hall

This floorplan allows free, unrestricted movement through the coach, front to back, yet creates a more intimate, more architecturally interesting interior.

### Leather/Vinyl Recliner

Soft leather/vinyl enhances the comfort of this plush swivel recliner, making it a perfect living-room lounge chair.











### Bathroom Amenities

Easy-cleaning Corian® countertops, ample cabinet space and lots of rich decorative touches, including a glass shower door, enliven the Dutch Star bathroom.



### Washer/Dryer

This space-saving, energy-saving washer/dryer combo will help keep your clothing fresh and clean throughout your travels.



### Enlarge Your Dreams

Dutch Star bedrooms offer either king or queen beds with a quilted headboard and bedspread, a reverse sham and accent pillows. The bed lifts up to reveal a large bed-base storage area. Some floorplans are also available with a stylish, comfy sidechair and ottoman.





### New Dash

Our new dash configuration puts you in command more than ever. All gauges and controls are right where you need them—including an LCD Chassis Information Center with diagnostics.

### New End-cap Designs

Dutch Star's clean, crisp exterior styling gets a boost from its strikingly re-imagined front and rear end caps. They harmonize the various exterior elements and give the coach a sleeker look. Select Dutch Star floorplans are built on tag-axle chassis.





### Pass-through Storage

Optional slideout trays in the basement's expansive pass-through storage compartment make it easier to stow and retrieve items from either side of the coach. Side-hinged swing-out doors give you easy access.



### Exterior Freezer

Keep food on ice closer to your outdoor grill with this optional exterior storage-compartment freezer. It glides forward with ease on a slideout tray.

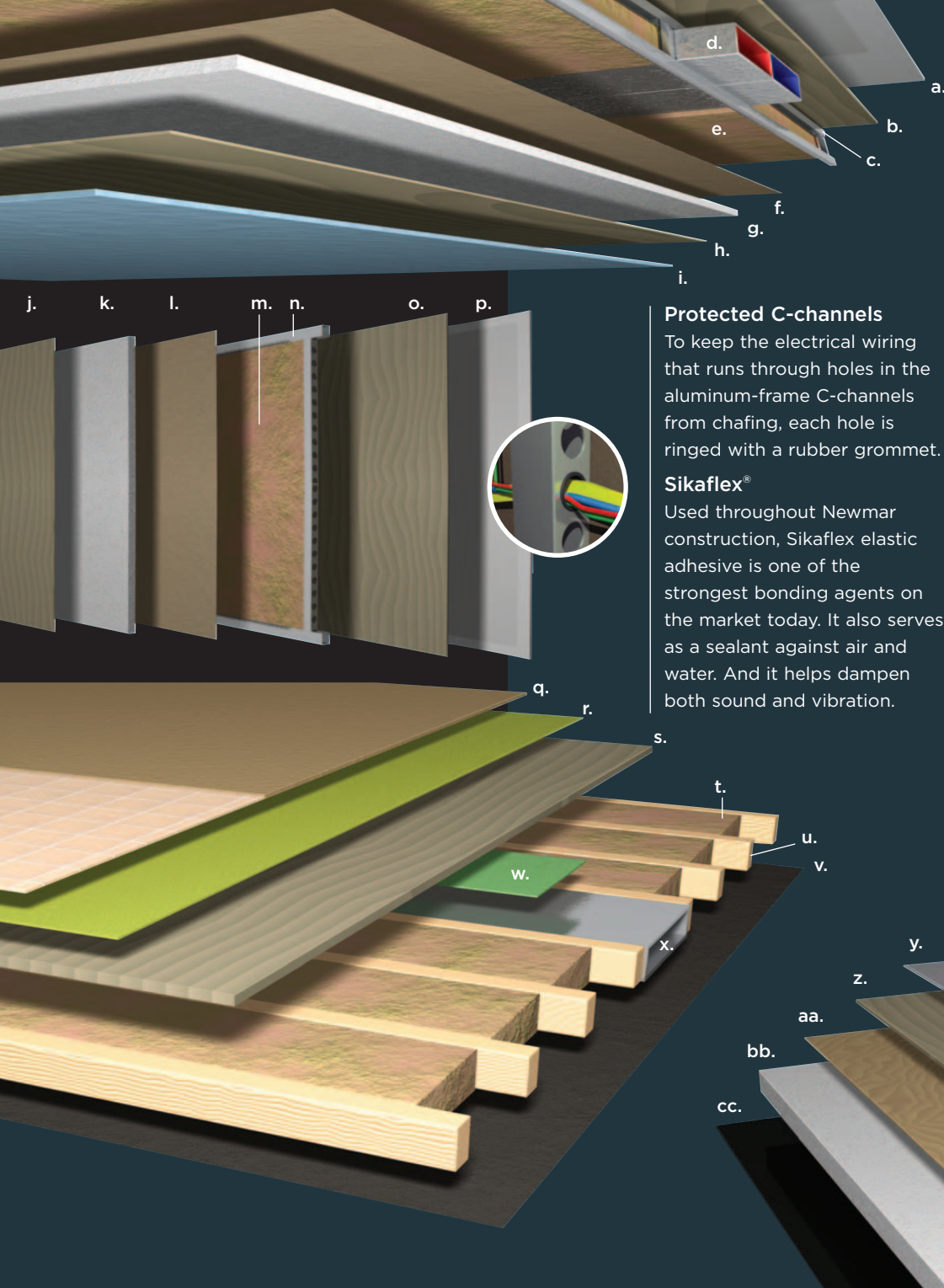


### Overhead TV

Convenient viewing from almost any position in the front living area is possible with this Sony® LCD flatscreen color TV mounted in the overhead, on the passenger side of the cab.







#### Ceilings: R-value = 16

- a. BriteTEK™ Roof
- b. 9 mm Wood Decking
- c. Aluminum Roof Truss
- d. A/C Ducting
- e. Fiberglass Batten Insulation
- f. Kraft Paper Vapor Barrier
- g. 5/8" Bead Foam
- h. 3/16" Panel
- i. Padded Vinyl Overlay

#### Walls: R-value = 11

- j. 3/16" Plywood Interior Wall
- k. 5/8" Bead Foam
- l. Kraft Paper Vapor Barrier
- m. Fiberglass Batten Insulation
- n. Aluminum Framing with 3/2" Header
- o. 3/16" Plywood Exterior Wall
- p. Composite One-piece Gelcoat Exterior Sidelwall

#### Flooring: R-value = 16

- q. Carpet/Tile
- r. Carpet Padding
- s. 5/8" Floor Decking
- t. Fiberglass Batten Insulation
- u. 2" x 3" Wood Framing
- v. Polyethylene Moisture Barrier
- w. Foam Panels (Noise Reduction)
- x. Aluminum Ducting

#### Basement: R-value = 4

- y. Cargo Liner
- z. 3/8" Floor Decking
- aa. 3/16" Luan Panel
- bb. 1 1/2" Bead Foam
- cc. Aluminum Sheeting (Prevents Distortion)

#### Protected C-channels

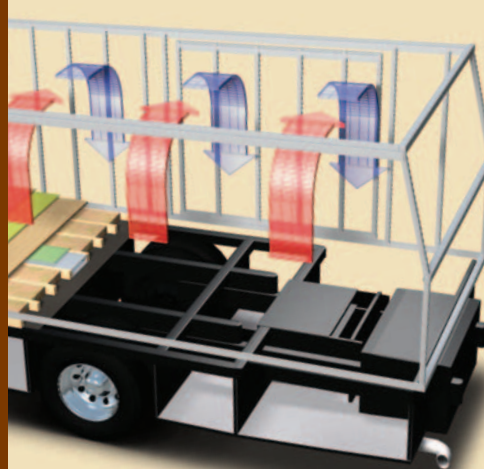
To keep the electrical wiring that runs through holes in the aluminum-frame C-channels from chafing, each hole is ringed with a rubber grommet.

#### Sikaflex®

Used throughout Newmar construction, Sikaflex elastic adhesive is one of the strongest bonding agents on the market today. It also serves as a sealant against air and water. And it helps dampen both sound and vibration.

#### Newmar Express Limited Warranty

For your protection and peace of mind, we at Newmar back your Dutch Star Diesel Pusher with one-year/unlimited-mileage warranty coverage: The Newmar Express Limited Warranty. Ask your dealer for an explanation and a copy of the warranty's complete terms.



#### Newmar Total Comfort™ Central Air Conditioning

Experience RV air conditioning just like that found in site-built homes. Newmar's Total Comfort Central Air Conditioning is actually two separate, fully ducted systems: one to distribute incoming cool air, the other to quickly and effectively remove warm air from every living area.

#### 16" On-center Framing

Just like a fine site-built residential home, your Newmar home is framed 16 inches on center, which allows the best placement of outlets, switches and other components.







#### Interior Colors

- a. Biscotti
- b. Cajun Spice
- c. Ebony
- d. Jade Mist

#### Finishes and Woods

- e. Oak Hardwood Cabinetry, Standard
- f. Coastal Cherry Hardwood Cabinetry
- g. Velvet Cherry Hardwood Cabinetry

*Some features shown in our literature are optional. Colors and finishes are photographic representations. The actual materials may look different. Prices, specifications and floorplans are subject to change at Newmar's discretion, without prior notice or obligation. Please see your dealer for actual samples and specifications.*



Biscotti



Cajun Spice



Ebony



Jade Mist

#### Full-Paint Masterpiece Finish™

Newmar's Full-Paint Masterpiece Finish creates an exterior of stunning beauty and incredible endurance—a true work of art. As industry leaders in applying full body paint to motorhome coaches, we at Newmar are pleased to offer the Full-Paint Masterpiece Finish as a Dutch Star Diesel Pusher standard.

#### Diamond Shield

Diamond Shield Front Paint Protection Film is standard on all Dutch Star Diesel Pushers featuring the Full-Paint Masterpiece Finish. This film protects against stone chips, scratches and bug acids and keeps the Full-Paint Masterpiece Finish looking new.

DIAMOND  SHIELD

[www.diamond-shield.com](http://www.diamond-shield.com)



[www.spartanchassis.com](http://www.spartanchassis.com)

SONY

[www.sony.com](http://www.sony.com)

Our commitment is to provide you a recreational vehicle of the highest quality. These are some of the top manufacturers who help us fulfill this commitment by supplying us with superior components.



# Floorplans & Options



**J374** 26" LCD TV in Front Overhead Compartment  
4320



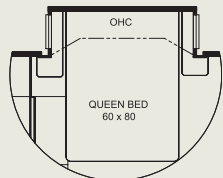
**J580** 56" Entertainment Center  
4028, 4320



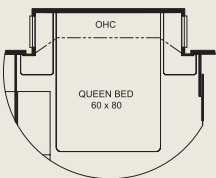
**J580\_2** 65" Entertainment Center  
4027



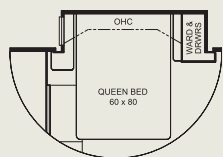
**J580\_3** 53" Entertainment Center  
3817



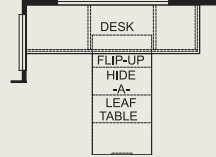
**K030** Queen Bed  
3816, 3817, 4026, 4028, 4306, 4320



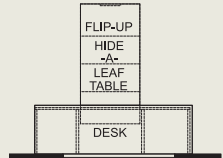
**K030\_2** Queen Bed  
4027



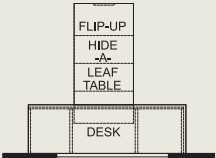
**K030\_3** Queen Bed  
4024



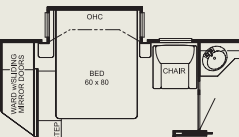
**K124** Combination Desk/  
Dinette  
3815, 3817, 4023, 4024, 4027, 4028, 4320



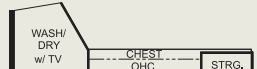
**K124\_2** Combination Desk/  
Dinette  
4026, 4306



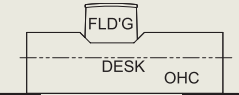
**K124\_3** Combination Desk/  
Dinette  
3816



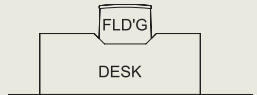
**K240** Queen Bed with Chair  
4024



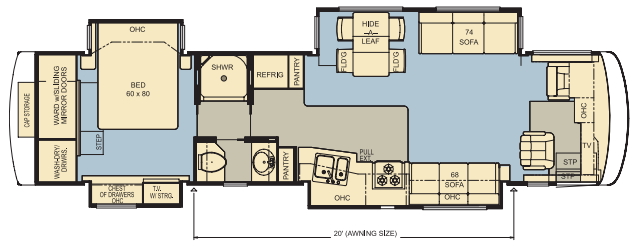
**K280** Dresser Center  
4028



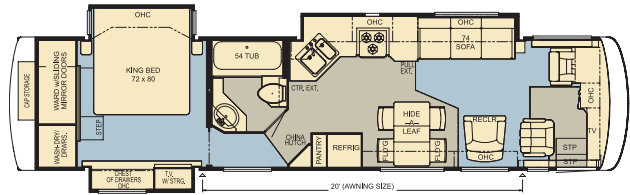
**K327** Desk  
4027



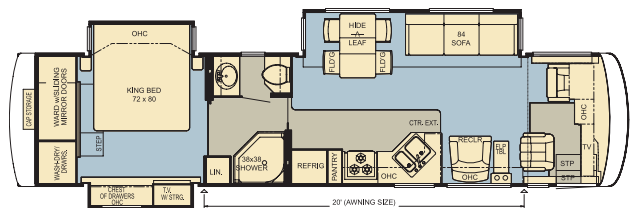
**K327\_2** 53" Desk  
3817



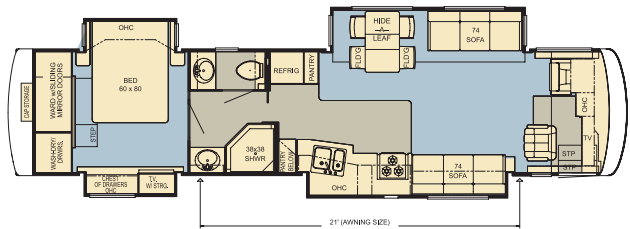
**DSDP 3815**  
Options: K124, K140, K421\_2, K541\_2  
Length: 38' 8"  
Width: 101.5"  
Unique Attributes:  
Extra Bedroom Storage  
Hide-a-Leaf Dinette  
Two Pantries



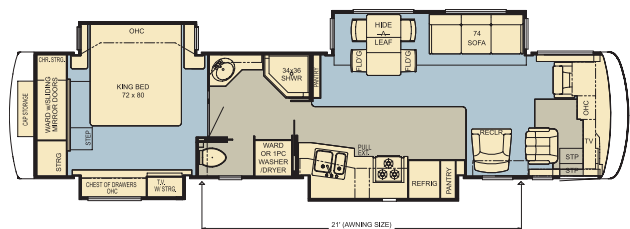
**DSDP 3816**  
Options: K030, K124\_3, K420\_2, K541  
Length: 38' 8"  
Width: 101.5"  
Unique Attributes:  
54" Bathtub  
King Bed  
Recliner



**DSDP 3817**  
Options: J580\_3, K030, K124, K327\_2, K421\_2, K541\_2, K801, P370  
Length: 38' 8"  
Width: 101.5"  
Unique Attributes:  
84" Sofa  
Hide-a-Leaf Dinette  
King Bed

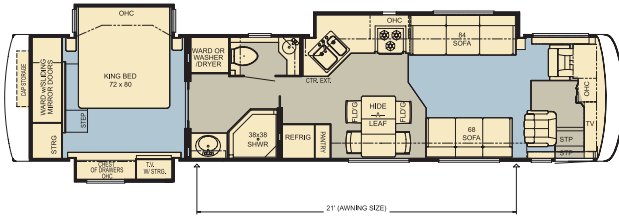


**DSDP 4023**  
Options: K124, K421\_2, K541\_2, K911, P370\_2  
Length: 40' 8"  
Width: 101.5"  
Unique Attributes:  
Extra Bedroom Storage  
Sink and Stool Positioning  
Two 74" Sofas



**DSDP 4024**  
Options: K030\_3, K124, K240, K421\_2, K541\_2, R104  
Length: 40' 8"  
Width: 101.5"  
Unique Attributes:  
King Bed  
Pantry  
Recliner



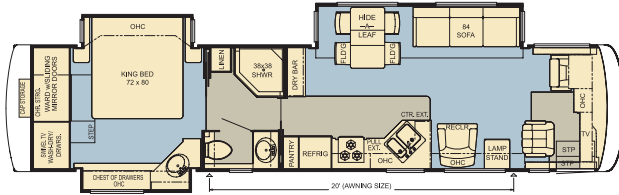


### DSDP 4026

Options: K030, K124\_2, K412, K541, P370\_3

Length: 40' 8"  
Width: 101.5"

Unique Attributes:  
84" Sofa  
King Bed  
Pantry

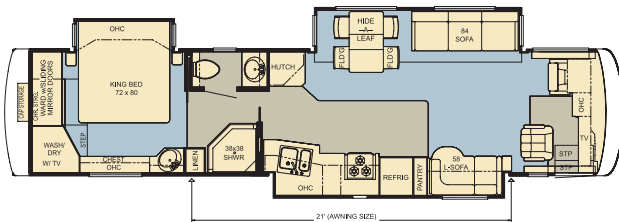


### DSDP 4027

Options: J580\_2, K030\_2, K124, K327, K412, K421\_2, K541\_2, K801, P370\_4

Length: 40' 8"  
Width: 101.5"

Unique Attributes:  
Extra Bedroom Storage  
King Bed  
Recliner

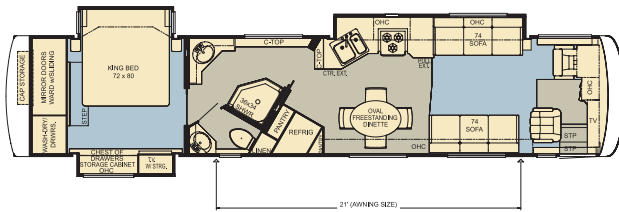


### DSDP 4028

Options: J580, K030, K124, K280, K421\_2, K541\_2, K801, P370\_5

Length: 40' 8"  
Width: 101.5"

Unique Attributes:  
King Bed  
L-lounge  
Pantry

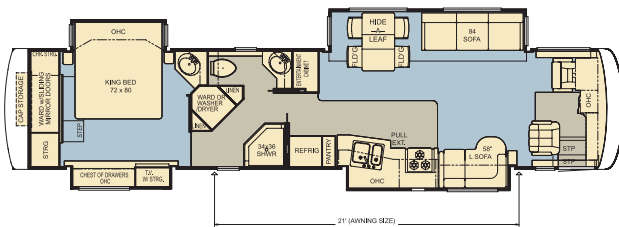


### DSDP 4306

Options: K030, K124\_2, K421\_3, K910

Length: 42' 8"  
Width: 101.5"

Unique Attributes:  
King Bed  
Oval Dinette  
Two 74" Sofas

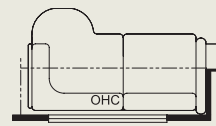


### DSDP 4320

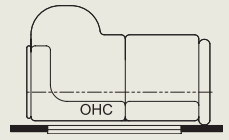
Options: J374, J580, K030, K124, K421\_2, K541\_2, K801

Length: 42' 8"  
Width: 101.5"

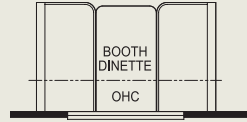
Unique Attributes:  
Angled Hallway  
King Bed  
L-lounge



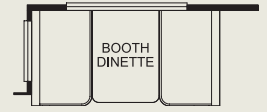
K140 | 66" L-lounge  
3815



K412 | 66" L-sofa  
4026, 4027



K420\_2 | Booth Dinette  
3816



K421\_2 | Booth Dinette  
3815, 3817, 4023, 4024,  
4027, 4028, 4320



K421\_3 | Booth Dinette  
4306



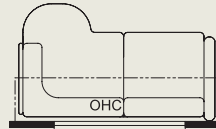
K541 | Round Dinette  
3816, 4026



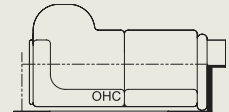
K541\_2 | Round Dinette  
3815, 3817, 4023, 4024,  
4027, 4028, 4320



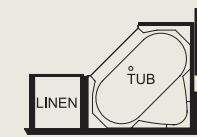
K801 | Combination U-dinette  
and L-sofa  
3817, 4027, 4028, 4320



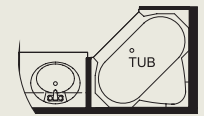
K910 | 72" L-lounge  
4306



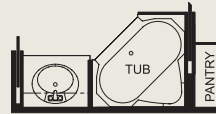
K911 | 72" L-sofa  
4023



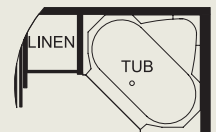
P370 | Corner Bathtub  
3817



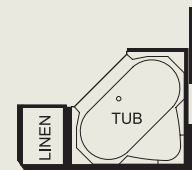
P370\_2 | Corner Bathtub  
4023



P370\_3 | Corner Bathtub  
4026



P370\_4 | Corner Bathtub  
4027



P370\_5 | Corner Bathtub  
4028



R104 | Power Lock Arms  
4024



# Features & Specifications

## STANDARD FEATURES

### CHASSIS FEATURES

- Spartan® Mountain Master GT Chassis with IFS
- Cummins® ISL 400 hp
- Exhaust Brake
- Adjustable Pedals
- Tag Axle on 43' Floorplans
- Coated Aluminum Wheels
- Hydraulic Leveling Jacks with Touch Control and Air Dump (Non-tag-axle Floorplans)
- Four-point Hydraulic Leveling Jacks with Automatic Control and Air Dump (Tag-axle Floorplans)
- Cruise Control
- Tilt-and-Telescope Steering with VIP SMART Wheel
- Recessed Fuel Fills with Crossover to Fill from Either Side
- Back-up Alarm
- Anti-lock Braking System
- Electronic Chassis Information Display in Dash

### AIR CONDITIONING & HEATING

- Two 13.5M Penguin™ Heat Pump Air Conditioners
- LP Furnace with In-floor Ducted Heat
- Dash Heater and High-output Air Conditioner
- LP Leak Detector

### APPLIANCES & ACCESSORIES

- 30" Convection Microwave Oven
- Three-burner Cooktop with Piezo Ignition
- Corian® Range Cover
- Dometic® 10 Cu.Ft. Refrigerator with Ice Maker
- Hardwood Raised-panel Refrigerator Front
- 12 Gal. Gas/Electric Water Heater with Direct-spark Ignition
- One-piece Washer/Dryer Prep\*
- Sony® 26" LCD Color TV in Living Area
- Sony Flatscreen Color TV in Bedroom
- AM/FM Dash Radio with Cassette and CD Player
- Sony Surround Sound System with AM/FM Radio, VCR, DVD Player and Subwoofer
- Rearview Color Monitor System
- TV Antenna with Power Booster and Two Interior Jacks
- Satellite Prep—Phone, TV Jack and Receptacle
- Exterior TV Jack on Door Side
- Telephone Connection with Phone Jacks in Living and Dash Area
- Two Bedroom Radio Speakers with On/Off Switch
- Roof-mounted Air Horns
- 10 Bc Fire Extinguisher, Carbon Monoxide and Smoke Detectors

### CABINETS & FURNITURE

- Oak Hardwood Cabinets with Raised-panel Double-arched Cabinet Doors
- Hidden-leaf Dinette Table with Four Chairs (Two Fixed, Two Folding)\*
- Corian Countertop in Kitchen with Undermounted Sink and Flush Sink Covers
- Corian Countertop in Bathroom with Integrated Bowl
- Drawers with Metal Guides
- Knife Hinges on Cabinet Doors
- Flexsteel® Furniture
- Leather/Vinyl Driver/Passenger Seats with Six-way Power, Power Lumbar and Footrest on Oversized Passenger Seat
- Lifts on Bed Top to Access Storage Area
- Storage Shelves Recessed into Rear Cap of Rear Wardrobe Floorplans
- Luxurious Pillowtop Mattress with Quilted Bedspread
- King Bed\*

### ELECTRICAL FEATURES

- 8.0 kW PowerTech Quiet Series Diesel Generator on Pullout Tray
- 50 Amp Electrical Service with Flexible Cord
- Four 6 Volt House Batteries on Pullout Tray
- Battery Disconnect Switch
- 5 Watt Solar Panel
- 2,000 Watt Inverter
- Emergency Start Switch
- Exterior Security Lights, One on Each Side
- Midship Side Turn Signals
- Recessed Docking Lights
- Switched Receptacle for Engine Block Heater
- Fluorescent Lights Throughout
- Lighted Wardrobe
- Slideout Information Voice Module
- Manually Operated Hold-to-Run Slideout Switch
- ICC Light Switch
- Two 12 Volt Auxiliary Receptacles on Dashboard
- Interior Courtesy Lights
- Map Lights

### EXTERIOR FEATURES

- Full-Paint Masterpiece Finish™ with Diamond Shield Front Protective Film
- Large Chrome Convex Exterior Mirrors with Remote Control, Defrost and Turn Signals
- Automatic Entrance Door with Double Step
- Front Entry Door with Power Flush Stepwell Cover
- Side-hinged Baggage Doors (Between Axles on Door Side, Except Door for Exterior Ent. Ctr.)
- Lighted Exterior Storage Compartments Controlled by Interior Master Switch
- 10,000 lb. Towing Hitch
- Lighted Acrylic Assist Handle at Entrance Door
- Rear Protective Tow Guard with Stainless Steel Newmar Name Cutout
- Rear Ladder
- Undercoating

### INTERIOR FEATURES

- Padded Vinyl Ceiling
- Day/Night Pleated Window Shades and Lambrequins
- Mini-blinds in Kitchen and Bath Areas
- Hardwood Fascia on Living Area and Bedroom Slideouts
- Simulated Plank Floor in Kitchen, Bathroom and Entrance Door Area
- Deluxe Carpeting with High-density Padding in Living Room and Bedroom
- Flat-panel Interior Passage Doors
- Interior Assist Handle at Main Entrance Door
- Sun Shades on Driver- and Passenger-side Windows
- Power-activated Sun Visors

### PLUMBING & BATH FEATURES

- Sewage Holding-tank Rinse
- Water Heater Bypass System
- SeaLand™ 500+ China Stool
- Towel Bars and Tissue Holder
- Towel Ladder on Hinged Bathroom Door
- Fiberglass Bathtub/Shower with Glass Door
- Decorative Decals Applied to Bathtub/Shower Enclosure
- Monitor Panel
- Water Pump Switches Located in Bathroom, Above Entrance Door, and on Exterior, Near Gate Valves
- Exterior Shower
- Water Filter for Entire Unit

### WINDOWS, AWNINGS & VENTS

- Double-pane Tinted Safety-glass Windows
- Fan-Tastic® Vent with Rain Sensor in Kitchen and Bathroom Areas

- A&E® 9000 Bedroom and Slideout Window Awnings
- A&E Oasis Power Front Entrance Door Awning
- A&E Weather Pro Power Side Awning
- A&E Slideout Awning Covers

## OPTIONAL FEATURES

### AIR CONDITIONING & HEATING

- Two 15M Penguin Heat Pump Air Conditioners
- Hydronic Zone Heating System (Replaces Water Heater and Furnace)

### APPLIANCES & ACCESSORIES

- Three-burner Range with Oven
- Dometic 12 Cu. Ft. Side-by-Side Refrigerator with Ice Maker
- Norcold® 12 Cu. Ft. Four-door Refrigerator with Ice Maker and Water Dispenser
- Norcold Freezer on Pullout Tray
- One-piece Washer/Dryer\*
- Two-piece Washer/Dryer\*
- Dishwasher in a Drawer Below Three-burner Cooktop
- 21" LCD Color TV with DVD Player and VCR in Living Area
- SIRIUS® Satellite Radio Capability (Does Not Include Monthly Subscription)
- 10-disc CD Player
- External Entertainment Center with 26" LCD TV, AM/FM Radio and CD Player
- KVH® Automatic Satellite without Receiver
- KVH In-motion Satellite without Receiver
- KVH L-3 In-motion Satellite without Receiver
- Entertainment Center with Relocated Living-area TV and Surround Sound System
- TripTek™ Electronic Travel Information (Displayed on Rearview Monitor)
- Navigation System
- CB Radio with Antenna
- CB Antenna
- Engine Assist for Water Heater

### CABINETS & FURNITURE

- Coastal Cherry Hardwood Cabinets
- Velvet Cherry Hardwood Cabinets
- Leather/Vinyl Swivel Recliner\*
- Leather/Vinyl Recliner with Ottoman\*
- Leather/Vinyl Freestanding Recliner\*
- Leather/Vinyl L-lounge\*
- Leather/Vinyl Sofa\*
- Hide-a-Bed Sofa with Air Mattress\*
- Leather/Vinyl Hide-a-Bed Sofa with Air Mattress\*
- Leather/Vinyl Combination U-dinette and L-lounge\*
- Bedroom Full-length Chest of Drawers\*
- Undermounted Solid-surface Sinks in Kitchen and Bathroom
- Booth Dinette with Forward-facing Seatbelts
- Combination Desk/Dinette Table
- Round Hardwood Dinette Table with Four Fixed Chairs
- Folding Coffee Table
- Desk with Folding Chair (Behind Passenger Seat)
- Overhead Cabinet Above Sofa and Dinette (This Cabinet is Included with the Slideout Lock Arm Option)
- Center Entrance Door Layout\*

### ELECTRICAL FEATURES

- Solar Prep
- 7.5 kW Onan® Diesel Quiet Series Generator
- Pre-wire for Freezer
- Power-cord Rewind Reel
- Energy Management System
- Roof-mounted Spot Light



## EXTERIOR FEATURES

- Hydraulic Leveling Jacks with Automatic Control and Air Dump
- Large Storage Tray with Access from One Side or Both Sides
- Small Storage Tray

## INTERIOR FEATURES

- Simulated Marble Floor in Kitchen, Bathroom and Entrance Door Area
- Ceramic Tile Floor in Kitchen, Bathroom and Entrance Door Area

## PLUMBING & BATH FEATURES

- Assist Handle in Bathtub/Shower
- Fold-down Shower Seat
- Corner Bathtub
- 110 Volt Heat Pads for Holding Tanks

## CONSTRUCTION FEATURES

- One-piece Molded Fiberglass Roof with 9 mm Decking
- Power Lock Arms on All Slideout Rooms

## WINDOWS, AWNINGS & VENTS

- Keyless Entry
- Driver's-side Power Window

\* Check with Dealership on floorplan availability.

## FLOORPLAN SPECIFICATIONS

FLOORPLAN	APP. OVERALL LENGTH <sup>1</sup>	WIDTH	APP. OVERALL HEIGHT	INTERIOR WIDTH	INTERIOR HEIGHT	GREY	SEWAGE	WATER	LP	FURNACE	WATER HEATER
DSDP 3815	38' 8"	101.5"	12' 6"	95.5"	84"	65 gal.	45 gal.	105 gal.	32 gal.	42,000 Btu	12 gal.
DSDP 3816	38' 8"	101.5"	12' 6"	95.5"	84"	65 gal.	45 gal.	105 gal.	32 gal.	42,000 Btu	12 gal.
DSDP 3817	38' 8"	101.5"	12' 6"	95.5"	84"	65 gal.	45 gal.	105 gal.	32 gal.	42,000 Btu	12 gal.
DSDP 4023	40' 8"	101.5"	12' 6"	95.5"	84"	65 gal.	45 gal.	105 gal.	32 gal.	42,000 Btu	12 gal.
DSDP 4024	40' 8"	101.5"	12' 6"	95.5"	84"	65 gal.	45 gal.	105 gal.	32 gal.	42,000 Btu	12 gal.
DSDP 4026	40' 8"	101.5"	12' 6"	95.5"	84"	65 gal.	45 gal.	105 gal.	32 gal.	42,000 Btu	12 gal.
DSDP 4027	40' 8"	101.5"	12' 6"	95.5"	84"	65 gal.	45 gal.	105 gal.	32 gal.	42,000 Btu	12 gal.
DSDP 4028	40' 8"	101.5"	12' 6"	95.5"	84"	65 gal.	45 gal.	105 gal.	32 gal.	42,000 Btu	12 gal.
DSDP 4306	42' 8"	101.5"	12' 7"	95.5"	84"	65 gal.	45 gal.	105 gal.	32 gal.	42,000 Btu	12 gal.
DSDP 4320	42' 8"	101.5"	12' 7"	95.5"	84"	65 gal.	45 gal.	105 gal.	32 gal.	42,000 Btu	12 gal.

## SPARTAN® CHASSIS INFORMATION

FLOORPLAN	ENGINE HP	AXLE RATIO	FUEL CAP.	WHEELBASE	FRONT GAWR <sup>2</sup>	REAR GAWR <sup>2</sup>	TAG GAWR	GVWR <sup>2</sup>	GCWR <sup>2</sup>	APP. UVW	APP. NCC
DSDP 3815	400	4.88	100 gal.	252"	14,200 lb.	20,000 lb.	—	34,200 lb.	44,200 lb.	26,824 lb.	7,376 lb.
DSDP 3816	400	4.88	100 gal.	252"	14,200 lb.	20,000 lb.	—	34,200 lb.	44,200 lb.	26,474 lb.	7,726 lb.
DSDP 3817	400	4.88	100 gal.	252"	14,200 lb.	20,000 lb.	—	34,200 lb.	44,200 lb.	26,705 lb.	7,495 lb.
DSDP 4023	400	4.88	150 gal.	276"	14,200 lb.	20,000 lb.	—	34,200 lb.	44,200 lb.	28,456 lb.	5,744 lb.
DSDP 4024	400	4.88	150 gal.	276"	14,200 lb.	20,000 lb.	—	34,200 lb.	44,200 lb.	28,411 lb.	5,789 lb.
DSDP 4026	400	4.88	150 gal.	276"	14,200 lb.	20,000 lb.	—	34,200 lb.	44,200 lb.	27,361 lb.	6,839 lb.
DSDP 4027	400	4.88	150 gal.	276"	14,200 lb.	20,000 lb.	—	34,200 lb.	44,200 lb.	27,215 lb.	6,985 lb.
DSDP 4028	400	4.88	150 gal.	276"	14,200 lb.	20,000 lb.	—	34,200 lb.	44,200 lb.	27,761 lb.	6,439 lb.
DSDP 4306	400	4.88	150 gal.	276"+TAG	14,200 lb.	20,000 lb.	10,000 lb.	44,200 lb.	54,200 lb.	31,269 lb.	12,931 lb.
DSDP 4320	400	4.88	150 gal.	276"+TAG	14,200 lb.	20,000 lb.	10,000 lb.	44,200 lb.	54,200 lb.	32,169 lb.	12,031 lb.

### MOUNTAIN MASTER CHASSIS

The Mountain Master chassis is America's most popular, premium, high horsepower diesel pusher. This premium world-class chassis is the flagship of Spartan Chassis, Inc. The Spartan Mountain Master and Mountain Master GT doesn't just lead the way, it paves the way! Experience the power, the superior ride and handling, plus the excellent driving performance with the Spartan Mountain Master chassis. The Mountain Master chassis provides excellent resale value and carries a 36 month, 50,000 mile, no deductible warranty, which includes road side assistance for the entire warranty period. So sit back and enjoy the ride!



Lengths, heights, widths and dry weights are approximate. Weight will vary based on optional equipment added to the above base weight.

**GAWR:** Gross Axle Weight Rating is the maximum permissible weight for an axle.

**GVWR:** Gross Vehicle Weight Rating is the maximum permissible weight of a fully loaded motorhome.

**GCWR:** Gross Combination Weight Rating is the value specified by the manufacturer of the vehicle as the maximum allowable loaded weight of this motorhome and any towed trailer or towed vehicle.

**UVW:** Unloaded Vehicle Weight is the weight of this motorhome as built at the factory with full fuel, engine oil and coolants. The UVW does not include cargo, fresh water, LP gas or dealer-installed accessories.

**NCC:** Net Carrying Capacity is the maximum weight of all occupants, including the driver, personal belongings, food, fresh water, waste water, LP gas, tools, tongue weight of towed vehicle, dealer-installed accessories, etc., that can be carried by the motorhome.

<sup>1</sup> Lengths do not include the rear ladder.

<sup>2</sup> Specifications are supplied by chassis manufacturer.





NEW MAR  
CONSTRUCTION

*Built to last*



NEW MAR  
SERVICE

*Only one call*



NEWMAR QUALITY: A WAY OF LIFE

#### The RVDA Quality Circle Award



For the fourth year in a row, Newmar has won the RVDA's Quality Circle Award, a reflection of feedback obtained from the association's annual dealer satisfaction survey. This is quite an honor—a measure of the trust our dealers and customers place in us. We will continue working to retain that trust.

#### The Newmar Factory Tour

We would love to have you visit our state-of-the-art production facility in Nappanee, Indiana. That's why we offer factory tours Monday through Friday at 10 a.m. and 1 p.m., Indiana time. Pre-registration is not required but helpful, and certain safety restrictions do apply. For more information, or to pre-register, please call 800-860-0086.

**Newmar Corporation**  
355 N Delaware St  
PO Box 30  
Nappanee IN 46550-0030  
574-773-7791 Fax 574-773-2895  
[www.newmarcorp.com](http://www.newmarcorp.com)

Your Official Newmar Dealer: