

2006 MOUNTAIN AIRE CLASS A

# 2006 MOUNTAIN AIRE

CLASS A

*by Newmar*





# Brace yourself for the invigorating Mountain Aire.

---



It's fresh and breezy—with enough sunny warmth to energize even your farthest travels. That's the thought behind our design, anyhow. We've kept the styling crisp and clean, traditional yet very "today." Not only that, we've included a wealth of high-end appointments and amenities that other motorhomes in Mountain Aire's range don't even offer. Innovative design and manufacturing make the difference. So too does having an eye for the details that make RV living come alive. People trust Newmar for this. It's our legacy to each new generation of RV enthusiasts.

*Richard E Parks*

Richard E. Parks

*President, Newmar Corporation*

# Mountain Aire Class A

Simple elegance.  
Profound practicality.  
Perfectly matched.

With Newmar's designers and engineers, form always follows function.  
And what glorious forms are achieved!

## Your Mountain Aire Kitchen

Corian® countertops with a flip-up extension. Generous cabinet space. And upscale appliance options, such as a 30-inch convection microwave oven and a three-burner cooktop mounted above a Fisher & Paykel DishDrawer® dishwasher. All contribute to making your Mountain Aire kitchen the hub of a truly enriching RV lifestyle.

## Hide-a-Bed Sofa

Optional in 74-inch flat-floor slideout models, this popular sofa extends to provide extra sleeping accommodations. It also features a supportive, relaxing air mattress.



## Pullout Faucet

The kitchen sink's single-lever faucet has a pullout spout for easier use. The sink itself is undermounted and comes with a flush-fitting Corian cover to match the countertop.

## Room for Living Large

Open, airy floorplans. Room-expanding slideouts. And remarkably comfortable furniture, including a sofa that unfolds for extra sleeping accommodations and a hidden-leaf dinette table. Mountain Aire truly defines spacious and gracious living.





Rest easy.  
You're well looked-after.

Your comfort is of supreme importance. And Mountain Aire caters to it in so many extraordinary ways. Life on the road becomes more than an adventure—it becomes a genuine pleasure.





### Bathroom Amenities

Easy-cleaning, Corian® countertops, ample cabinet space and a glass shower door are but a few of the Mountain Aire bathroom's thoughtful conveniences.

### Washer/Dryer

This space-saving, energy-saving optional washer/dryer combo will help keep your clothing fresh and clean throughout your travels.

### Drift Off in Dreams

Mountain Aire bedrooms offer a queen bed with a quilted headboard and comforter, a reverse sham and accent pillows. The rich cabinetry provides plenty of drawers and closet space. And there's even an additional storage area under the lift-up bed.





### Your Mountain Aire Command Center

Step into the Mountain Aire cockpit, and you have everything you need to take complete control of your RV experience. All dashboard instrumentation is well within view and reach, including controls for the hydraulic leveling jacks and a color rearview monitor. Driver and passenger comfort are well taken care of, thanks to power-adjustable seating with optional distressed leather vinyl. And you'll appreciate how nicely the cab blends into the design of the front living area.



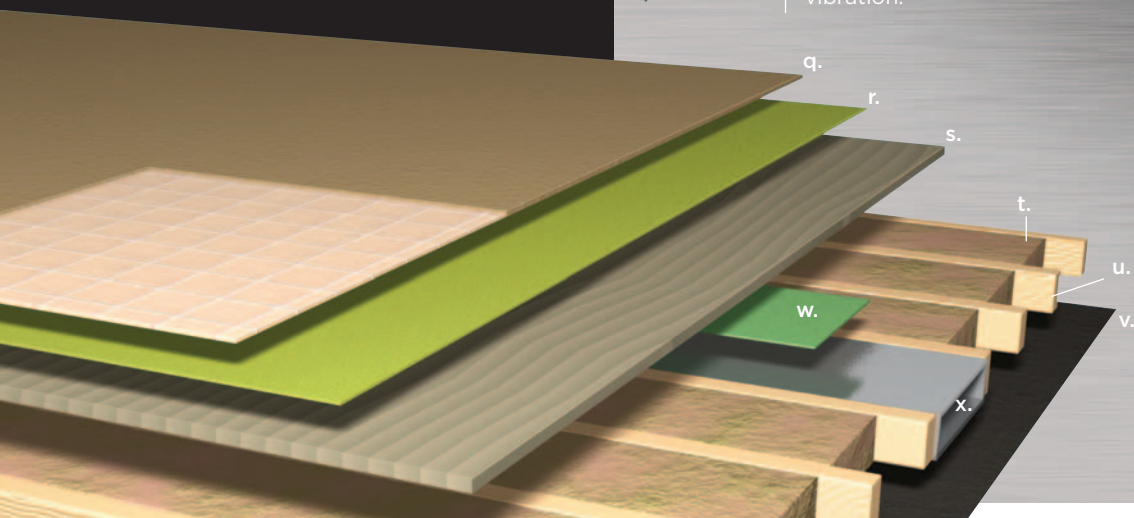
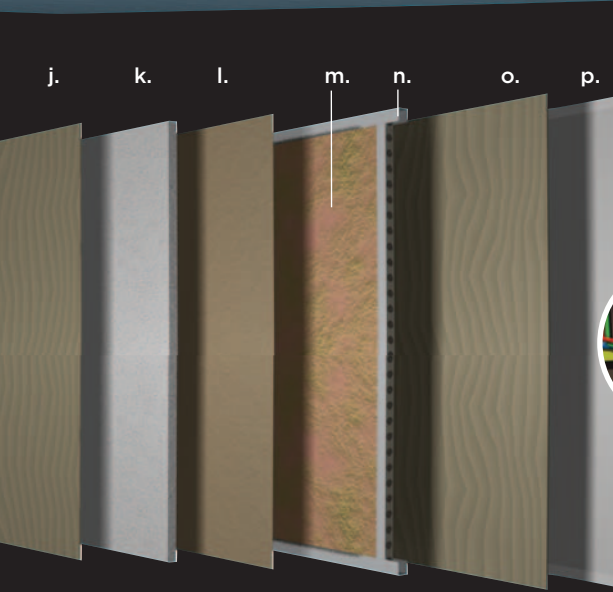
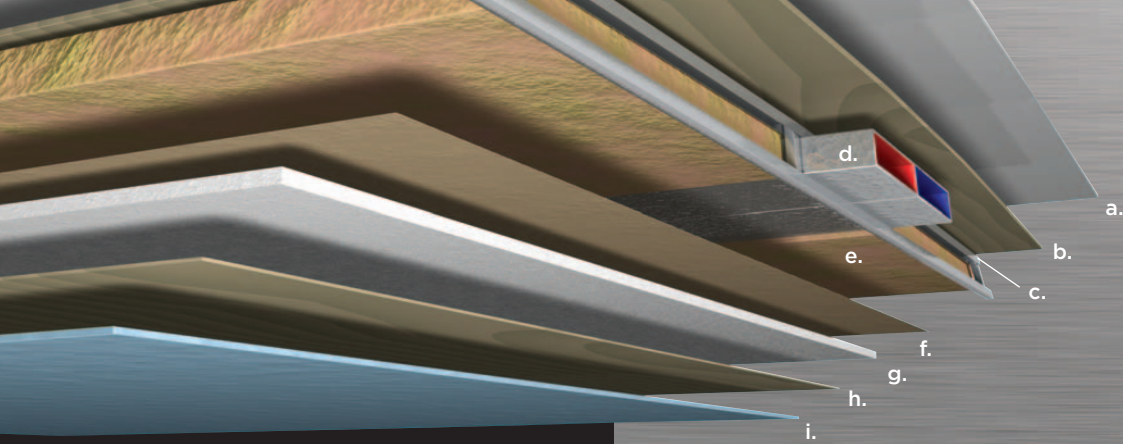




You've got the power  
to go where you will.

Beyond its exceptional living amenities, Mountain Aire is a real powerhouse. You'll feel that right away in its solid performance. And you'll see it reflected in bold styling throughout.





**Ceilings: R-value = 16**

- a. BriteTEK™ Roof
- b. 9 mm Wood Decking
- c. Aluminum Roof Truss
- d. A/C Ducting
- e. Fiberglass Batten Insulation
- f. Kraft Paper Vapor Barrier
- g. 5/8" Bead Foam
- h. 3/8" Panel
- i. Padded Vinyl Overlay

**Walls: R-value = 11**

- j. 3/8" Plywood Interior Wall
- k. 5/8" Bead Foam
- l. Kraft Paper Vapor Barrier
- m. Fiberglass Batten Insulation
- n. Aluminum Framing with 3/2" Header
- o. 3/8" Plywood Exterior Wall
- p. Composite One-piece Gelcoat Exterior Sidewall

**Flooring: R-value = 11**

- q. Carpet/Tile
- r. Carpet Padding
- s. 5/8" Floor Decking
- t. Fiberglass Batten Insulation
- u. 2" x 3" Wood Framing
- v. Polyethylene Moisture Barrier
- w. Foam Panels (Noise Reduction)
- x. Aluminum Ducting

**Protected C-channels**

To keep the electrical wiring that runs through holes in the aluminum-frame C-channels from chafing, each hole is ringed with a rubber grommet.

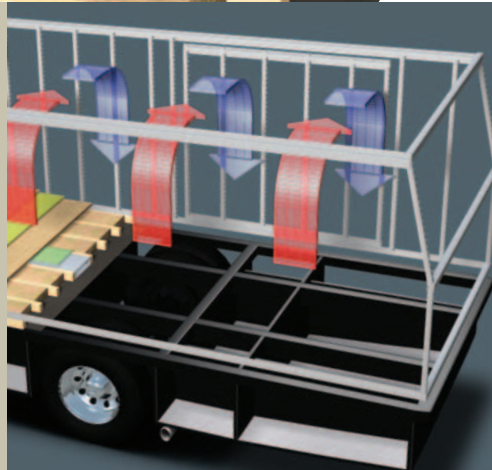


**Sikaflex®**

Used throughout Newmar construction, Sikaflex elastic adhesive is one of the strongest bonding agents on the market today. It also serves as a sealant against air and water. And it helps dampen both sound and vibration.

**Newmar Express Limited Warranty**

For your protection and peace of mind, we at Newmar back your Mountain Aire Class A with one-year/unlimited-mileage warranty coverage: The Newmar Express Limited Warranty. Ask your dealer for an explanation and a copy of the warranty's complete terms.



**Newmar Total Comfort™ Central Air Conditioning**

Experience RV air conditioning just like that found in site-built homes. Newmar's Total Comfort Central Air Conditioning is actually two separate, fully ducted systems: one to distribute incoming cool air, the other to quickly and effectively remove warm air from every living area.

**16" On-center Framing**

Just like a fine site-built residential home, your Newmar home is framed 16 inches on center, which allows the best placement of outlets, switches and other components.





## The road belongs to Mountain Aire.

### Pass-through Storage

Stow all your favorite travel gear—from either side of the coach—in this huge exterior pass-through compartment. Side-hinged swing-out doors give you easy access.

### Cooler in Step

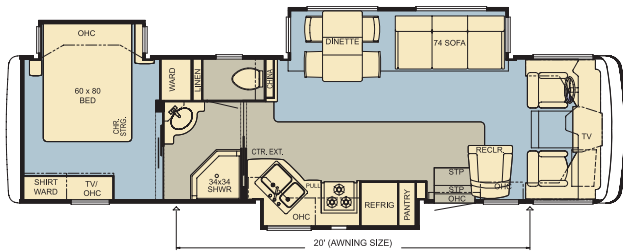
Keep beverages especially handy—not to mention cold—with this cooler that's built right into the coach's top entrance step. Just lift the sturdy tread-covered top for access.

### Mirror/Compass/Temperature

Need compass direction? Want the outdoor temp? They're right in front of you, electronically displayed in the optional rearview mirror. Controls are located at the bottom of the mirror frame.



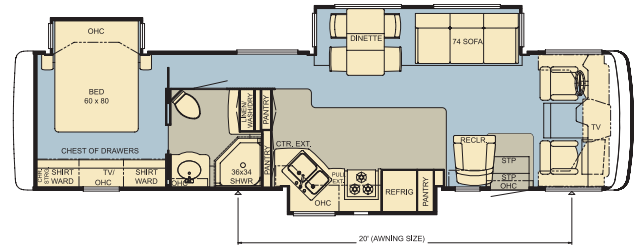
# Mountain Aire Class A Floorplans



**MACA 3570**  
Options: K122, K421

Length: 35' 3"  
Width: 101.5"

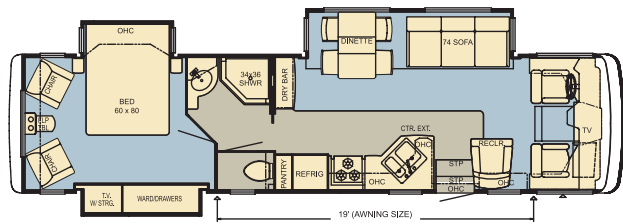
Unique Attributes:  
74" Sofa  
Recliner  
Sink and Stool Positioning



**MACA 3783**  
Options: K122, K421

Length: 37' 2"  
Width: 101.5"

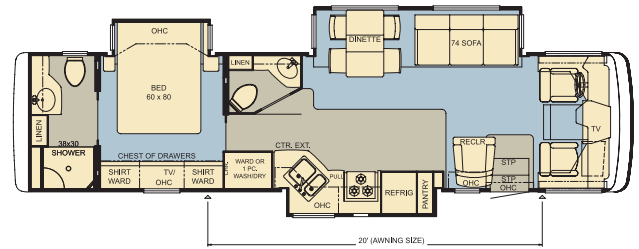
Unique Attributes:  
Extra Bedroom Storage  
Recliner  
Two Pantries



**MACA 3743**  
Options: K122, K421, K861

Length: 37' 2"  
Width: 101.5"

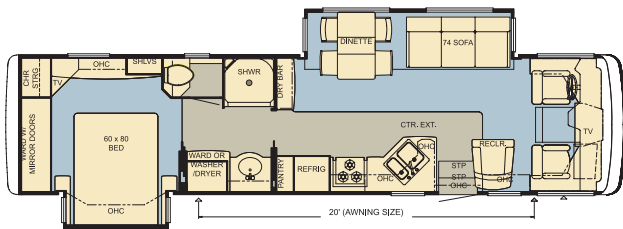
Unique Attributes:  
Dry Bar  
Recliner  
Two Bedroom Chairs



**MACA 3784**  
Options: K122, K421

Length: 37' 2"  
Width: 101.5"

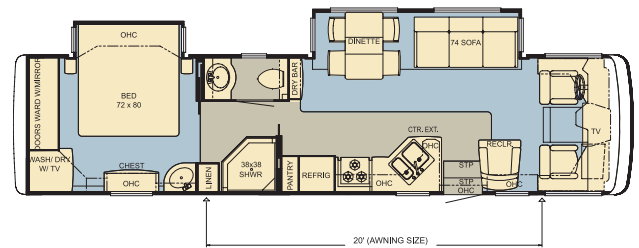
Unique Attributes:  
Hide-a-Leaf Dinette  
Recliner  
Two Bathrooms



**MACA 3778**  
Options: K122, K421

Length: 37' 2"  
Width: 101.5"

Unique Attributes:  
Extra Bedroom Storage  
Pantry  
Recliner



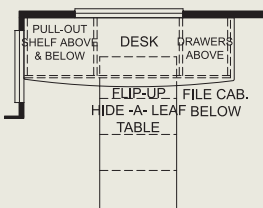
**MACA 3785**  
Options: K122, K421

Length: 37' 2"  
Width: 101.5"

Unique Attributes:  
74" Sofa  
Extra Bedroom Storage  
Recliner

Carpet Simulated Ceramic Flooring

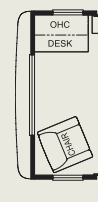
## Floorplan Options



**K122** | Dinette/Computer Station  
3570, 3743, 3778, 3783,  
3784, 3785



**K421** | Booth Dinette  
3570, 3743, 3778, 3783,  
3784, 3785



**K861** | Computer Center  
3743



Autumn Maple



Lava



Rattan



Vapor Green



a.



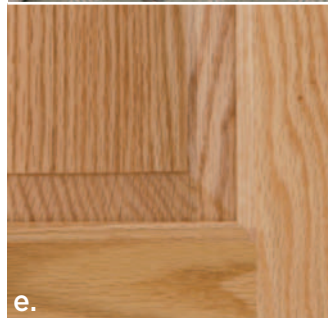
b.



c.



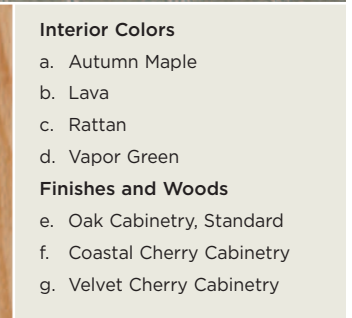
d.



e.



f.



g.

**Interior Colors**

- a. Autumn Maple
- b. Lava
- c. Rattan
- d. Vapor Green

**Finishes and Woods**

- e. Oak Cabinetry, Standard
- f. Coastal Cherry Cabinetry
- g. Velvet Cherry Cabinetry

**Full-Paint Masterpiece Finish™**

Newmar's Full-Paint Masterpiece Finish creates an exterior of stunning beauty and incredible endurance—a true work of art. As industry leaders in applying full body paint to motorhome coaches, we at Newmar are pleased to offer the Full-Paint Masterpiece Finish as a Mountain Aire Class A standard.

**Diamond Shield**

Diamond Shield Front Paint Protection Film is standard on all Mountain Aire Class A's featuring the Full-Paint Masterpiece Finish. This film protects against stone chips, scratches and bug acids and keeps the Full-Paint Masterpiece Finish looking new.

*Some features shown in our literature are optional. Colors and finishes are photographic representations. The actual materials may look different. Prices, specifications and floorplans are subject to change at Newmar's discretion, without prior notice or obligation. Please see your dealer for actual samples and specifications.*

# Features and Specifications

## STANDARD FEATURES

### CHASSIS FEATURES

- Workhorse™ W-24 Chassis
- Hydraulic Leveling Jacks with Touch Control
- Cruise Control
- Tilt Steering Wheel
- Stainless Steel Wheel Simulators

### AIR CONDITIONING & HEATING

- Two 13.5M Penguin™ Central Air Conditioners
- LP Furnace with In-floor Ducted Heat
- Dash Heater and High-output Air Conditioner
- Wall-mounted Sensors for Heating and Air Conditioning
- LP Leak Detector

### APPLIANCES & ACCESSORIES

- Three-burner Recessed Range with Glass Oven Door and Electronic Ignition
- Corian® Range Cover
- Dometic® 8 Cu.Ft. Refrigerator
- Hardwood Raised-panel Refrigerator Front
- Spacemaker® Microwave Oven
- 10 Gal. Gas/Electric Water Heater with Direct-spark Ignition
- Sony® Flatscreen Color TV in Living Area
- Sony Flatscreen Color TV in Bedroom
- AM/FM Dash Radio with Cassette and CD Player
- Sony Surround Sound System with AM/FM Radio, VCR, DVD Player and Subwoofer
- Rearview Color Monitor System
- TV Antenna with Power Booster and Two Interior Jacks
- Satellite Prep —Phone, TV Jack and Receptacle
- Exterior TV Jack on Door Side
- Telephone Connection with Phone Jacks in Living and Dash Area
- Two Bedroom Radio Speakers with On/Off Switch
- Cooler Located in Entrance-step Compartment
- Roof-mounted Trumpet Horn
- "TV Antenna is Up" Warning Light on Dash
- 10 Bc Fire Extinguisher, Carbon Monoxide and Smoke Detectors

### CABINETS & FURNITURE

- Oak Hardwood Cabinets with Raised-panel Double Cathedral Doors
- Hidden-leaf Dinette Table with Four Chairs (Two Fixed, Two Folding)
- Corian Countertop in Kitchen with Undermounted Acrylic Sink and Flush Sink Covers
- Corian Countertop in Bathroom with Integrated Bowl
- Drawers with Metal Guides
- Knife Hinges on Cabinet Doors
- Flexsteel® Furniture
- Leather/Vinyl Driver/Passenger Seats with Six-way Power, Power Lumbar and Ergo-Flex Arms
- Cedar Paneling in Wardrobe
- Lifts on Bed Top to Access Storage Area
- Tufted Mattress with Quilted Bedspread

### ELECTRICAL FEATURES

- 7.5 kW Guardian® Generator with Remote Switch and Automatic Changeover
- 50 Amp Electrical Service with Flexible Cord
- Two 6 Volt House Batteries on Pullout Tray
- Battery Disconnect Switch
- 110 Volt Exterior Receptacle on Door Side
- 5 Watt Solar Panel
- 75 Amp Converter
- Daytime Headlight System
- Emergency Start Switch
- Exterior Security Lights, One on Each Side
- Fluorescent Lights Throughout
- Lighted Wardrobe
- Slideout Information Voice Module
- Manually Operated Hold-to-Run Slideout Switch
- ICC Light Switch
- Two 12 Volt Auxiliary Receptacles on Dashboard
- Interior Courtesy Lights
- Midship Side Turn Signals
- Exterior TV Jack on Door Side
- Solar Prep

### EXTERIOR FEATURES

- Full-Paint Masterpiece Finish™ with Diamond Shield Protective Film
- Convex Exterior Mirrors with Remote Control, Defrost and Turn Signals
- Automatic Entrance Door with Triple Step
- Side-hinged Baggage Doors (Below Slideout Rooms, Between Axles, Not Door for Ext. Ent. Ctr.)
- Lighted Exterior Storage Compartments Controlled by Interior Master Switch
- 5,000 Lb. Towing Hitch
- Lighted Acrylic Assist Handle at Entrance Door
- Rear Ladder
- Rear Protective Tow Guard with Stainless Steel Newmar Letters
- Squeegee Stored in Exterior Compartment
- Undercoating

### INTERIOR FEATURES

- Padded Vinyl Ceiling
- Lined Day/Night Pleated Window Shades and Lambrequins
- Mini-blinds in Kitchen and Bath Areas
- Hardwood Fascia on Living Area Slideout
- Hardwood Window Sills
- Simulated Ceramic Floor in Kitchen and Bathroom Areas
- Deluxe Carpeting with High-density Padding in Living Room and Bedroom
- Flat-panel Interior Passage Doors
- Interior Assist Handle at Main Entrance Door
- Sun Shades on Driver- and Passenger-side Windows
- Power-activated Sun Visors
- Kitchen Wastebasket

### PLUMBING & BATH FEATURES

- Sewage-hose Holder, Easy-access Flip-down Tray
- Sewage Holding-tank Rinse
- Water Heater Bypass System
- SeaLand™ 500+ China Stool
- Towel Bar, Tissue Holder, Towel Ring and Robe Hook
- Towel Ladder on Hinged Bathroom Door
- Fiberglass Tub/Shower with Glass Shower Door
- Monitor Panel
- Monoplex Water Pump Switches Located in Bathroom and on Exterior, Near Gate Valves
- Water Filter for Entire Unit
- Exterior Shower

### WINDOWS, AWNINGS & VENTS

- Double-pane, Tinted Safety-glass Windows
- Fan-Tastic® Vent with Rain Sensor in Kitchen Area
- Power Vent with Wall Switch in Bathroom
- A&E® 9000 Bedroom and Slideout Window Awnings
- A&E Weather Pro Power Side Awning
- A&E Slideout Awning Covers

## OPTIONAL FEATURES

### CHASSIS FEATURES

- Coated Aluminum Wheels

### AIR CONDITIONING & HEATING

- Two 15M Penguin Heat Pump Air Conditioners
- Two 13.5M Penguin Heat Pump Air Conditioners

### APPLIANCES & ACCESSORIES

- 30" Convection Microwave Oven and Three-burner Cooktop with Electronic Ignition
- 30" Convection Microwave Oven with Dishwasher-in-Drawer Below Three-burner Cooktop
- Dometic® 10 Cu.Ft. Refrigerator
- Norcold® 12 Cu.Ft. Four-door Refrigerator\*
- Norcold 12 Cu.Ft. Four-door Refrigerator with Icemaker and Water Dispenser
- Icemaker added to Refrigerator\*
- U-line Icemaker
- One-piece Washer/Dryer\*
- One-piece Washer/Dryer Prep\*
- Two-piece Washer/Dryer
- Interior Rearview Mirror with Electronic Compass and Temperature Display
- SIRIUS® Satellite Radio Capability (Does Not Include Monthly Subscription)
- 10-disc CD Player
- Engine Assist for Water Heater
- External Entertainment Center with AM/FM Radio, Cassette and CD Player
- Sony 23" LCD TV in Front Overhead
- KVH® Automatic Satellite Dish without Receiver
- KVH In-motion Satellite Dish without Receiver
- KVH L 3 In-motion Satellite Dish without Receiver
- CB Antenna
- CB Radio with Antenna

Our commitment is to provide you a recreational vehicle of the highest quality. These are some of the top manufacturers who help us fulfill this commitment by supplying us with superior components.

**SONY**

[www.sony.com](http://www.sony.com)

**DIAMOND SHIELD**

[www.diamond-shield.com](http://www.diamond-shield.com)

## CABINETS & FURNITURE

- Coastal Cherry Hardwood Cabinets
- Velvet Cherry Hardwood Cabinets
- Distressed-leather/Vinyl Swivel Rocker Recliner\*
- Distressed-leather/Vinyl Freestanding Swivel Rocker Recliner\*
- Distressed-leather/Vinyl Sofa\*
- Distressed-leather/Vinyl Hide-a-Bed Sofa with Air Mattress\*
- Hide-a-Bed Sofa with Air Mattress\*
- Distressed-leather/Vinyl Driver/Passenger Seats
- Booth Dinette with Forward-facing Seatbelts
- Combination Desk/Dinette Table with Two Fixed Chairs
- Bedroom Full-length Chest of Drawers
- Undermounted Solid-surface Sinks in Kitchen and Bathroom

- Luxurious Pillowtop Mattress
- Overhead Cabinet Above Sofa and Dinette (This Cabinet is Included with the Slideout Lock Arm Opt.)
- Bedroom Desk

## ELECTRICAL FEATURES

- 2000 Watt Inverter with Two Extra Batteries
- 600 Watt Inverter For Living Area or Bedroom TV
- 7.0 kW Onan® Generator
- Recessed Docking Lights
- Roof-mounted Spotlight
- 50 Amp Cord Reel

## EXTERIOR FEATURES

- Large Chrome Exterior Mirrors

## INTERIOR FEATURES

- Simulated Plank Floor in Kitchen and Bath Area
- Ceramic Floor Tile in Bathroom Area and Simulated Plank in Kitchen Area

## PLUMBING & BATH FEATURES

- Assist Handle in Bathtub/Shower
- 110 Volt Heat Pads for Holding Tanks
- Fold-down Shower Seat
- Thetford® Aria Sculptured China Stool

## CONSTRUCTION FEATURES

- One-piece Molded-fiberglass Roof with 9 mm Decking
- Power Lock Arms on All Slideout Rooms

## WINDOWS, AWNINGS & VENTS

- Fan-Tastic® Vent with Rain Sensor in Bathroom

\* Check with the Dealership on floorplan availability.

## FLOORPLAN SPECIFICATIONS

FLOORPLAN	APP. OVERALL LENGTH <sup>1</sup>	WIDTH	APP. OVERALL HEIGHT	INTERIOR WIDTH	INTERIOR HEIGHT	GREY	SEWAGE	WATER	LP	FURNACE	WATER HEATER
MACA 3570	35' 3"	101.5"	12' 6"	95.5"	84"	50 gal.	50 gal.	75 gal.	25 gal.	35,000 Btu	10 gal.
MACA 3743	37' 2"	101.5"	12' 6"	95.5"	84"	50 gal.	50 gal.	75 gal.	25 gal.	42,000 Btu	10 gal.
MACA 3778	37' 2"	101.5"	12' 6"	95.5"	84"	50 gal.	50 gal.	75 gal.	25 gal.	42,000 Btu	10 gal.
MACA 3783	37' 2"	101.5"	12' 6"	95.5"	84"	50 gal.	50 gal.	75 gal.	25 gal.	42,000 Btu	10 gal.
MACA 3784	37' 2"	101.5"	12' 6"	95.5"	84"	50 gal.	50 gal.	75 gal.	25 gal.	42,000 Btu	10 gal.
MACA 3785	37' 2"	101.5"	12' 6"	95.5"	84"	50 gal.	50 gal.	75 gal.	25 gal.	42,000 Btu	10 gal.

## WORKHORSE™ CHASSIS INFORMATION

FLOORPLAN	ENGINE HP	AXLE RATIO	FUEL CAP.	WHEEL BASE	FRONT GAWR <sup>2</sup>	REAR GAWR <sup>2</sup>	GVWR <sup>2</sup>	GCWR <sup>2</sup>	APP. UVW	APP. NCC
MACA 3570	340	5.86	75 gal.	242"	9,000 lb.	15,500 lb.	24,000 lb.	30,000 lb.	20,253 lb.	3,747 lb.
MACA 3743	340	5.86	75 gal.	252"	9,000 lb.	15,500 lb.	24,000 lb.	30,000 lb.	20,437 lb.	3,563 lb.
MACA 3778	340	5.86	75 gal.	242"	9,000 lb.	15,500 lb.	24,000 lb.	30,000 lb.	19,972 lb.	4,028 lb.
MACA 3783	340	5.86	75 gal.	242"	9,000 lb.	15,500 lb.	24,000 lb.	30,000 lb.	20,506 lb.	3,494 lb.
MACA 3784	340	5.86	75 gal.	242"	9,000 lb.	15,500 lb.	24,000 lb.	30,000 lb.	20,875 lb.	3,133 lb.
MACA 3785	340	5.86	75 gal.	252"	9,000 lb.	15,500 lb.	24,000 lb.	30,000 lb.	20,062 lb.	3,938 lb.

Lengths, heights, widths and dry weights are approximate. Weight will vary based on optional equipment added to the above base weight.

GAWR: Gross Axle Weight Rating is the maximum permissible weight for an axle.

GVWR: Gross Vehicle Weight Rating is the maximum permissible weight of a fully loaded motorhome.

GCWR: Gross Combination Weight Rating is the value specified by the manufacturer of the vehicle as the maximum allowable loaded weight of this motorhome and any towed trailer or towed vehicle.

UVW: Unloaded Vehicle Weight is the weight of this motorhome as built at the factory with full fuel, engine oil and coolants. The UVW does not include cargo, fresh water, LP gas or dealer-installed accessories.

NCC: Net Carrying Capacity is the maximum weight of all occupants, including the driver, personal belongings, food, fresh water, waste water, LP gas, tools, tongue weight of towed vehicle, dealer-installed accessories, etc., that can be carried by the motorhome.

<sup>1</sup> Lengths do not include the rear ladder.

<sup>2</sup> Specifications are supplied by chassis manufacturer.



NEW MAR  
CONSTRUCTION

*Built to last*



NEW MAR  
SERVICE

*Only one call*



NEWMAR QUALITY: A WAY OF LIFE

**The RVDA Quality Circle Award**



For the fourth year in a row, Newmar has won the RVDA's Quality Circle Award, a reflection of feedback obtained from the association's annual dealer satisfaction survey. This is quite an honor — a measure of the trust our dealers and customers place in us. We will continue working to retain that trust.

**The Newmar Factory Tour**

We would love to have you visit our state-of-the-art production facility in Nappanee, Indiana. That's why we offer factory tours Monday through Friday at 10 a.m. and 1 p.m., Indiana time. Pre-registration is not required but helpful, and certain safety restrictions do apply. For more information, or to pre-register, please call 800-860-0086.

Your Official Newmar Dealer:

**Newmar Corporation**

355 N Delaware St  
PO Box 30  
Nappanee IN 46550-0030  
574-773-7791 Fax 574-773-2895  
[www.newmarcorp.com](http://www.newmarcorp.com)