

2007  
**CYPRESS**

Fifth Wheel



For jaunty,  
**fun-loving**  
adventures...

Or simply hunkering  
down in its  
**cozy confines...**

Cypress is ready  
when you are!



no ordinary  
**fifth wheel!**

step up to  
**value!**





Listen to **Your**  
Experience



*jaunty*  
**FUN!**





Because you're an experienced RVer, you've seen what other manufacturers offer. Now take a look at Newmar's Cypress fifth wheel. For stepping up, you can't beat the value, fit and finish of Cypress. That's the difference that sets it apart.

It begins with Newmar's legendary, old-world craftsmanship. Your peace of mind is job one...and comfort is a major element of that. Details like sculpted carpet with high-density padding, hardwood raised panel cabinet doors, freestanding dinette table and chairs — both with hidden storage — plus a full video and audio entertainment center all remind you this is no ordinary fifth wheel.

Gliding and reclining living room chairs, and Hide-A-Bed sofa provide home-style relaxing after long days of travel and adventures. Touches like living room ceiling fan, large living room mirrors and decorative wall borders cater to the homey feel. Cypress is a premium fifth wheel you'll be proud to own for years to come. And Newmar workmanship ensures that it's as robust then as the day you bring it home from your dealer.

Let your experience guide you. Your sense of value will revel in Cypress comfort, performance and quality. Cypress by Newmar. When you know the difference.

It knows *this* fifth wheel is  
**a perfect blend**  
*of comfort,*  
*performance,*  
**value . . . and fun!**

37LSRE shown above with optional Diamond Package.





# Discover the Affordable *Luxuries.*

...that come standard in the Cypress kitchen and dining area—a space designed to encourage gatherings and relaxation. The warm, inviting atmosphere begins with the beautiful and thoughtfully designed cabinets. They offer ample storage with cathedral height and a touch of elegance thanks to the Tucson Ash raised-panel hardwood doors. The cabinets coordinate perfectly with hardwood-edged laminate countertops, wood laminate steps with hardwood bullnosing, decorative wall border, and durable vinyl floor throughout the kitchen and foyer. They feature extra deep kitchen drawers for added space and a convenient toe kick. The eight-cubic-foot refrigerator, 22-inch oven and three-burner cooktop with piezo ignition make meal preparation a snap. Don't forget the extras that come standard, like the paper towel holder, built-in Corian® knife block, molded silverware divider tray and Teflon® sink cover. Enjoy dinner time at the "Super Slider" free-standing dinette table with lift-top storage and the dinette chairs that hide in-seat storage. Switches and systems controls are thoughtfully grouped for easy access.





37LSRE shown above with optional Diamond Package.



# Discover

# Your Traveling

It's just a few steps away and has all the comforts of home, plus a few more. From the large 60-inch by 80-inch bed with quilted bedspread and coordinating shams to the one-piece fiberglass shower with molded seat and glass enclosure, the bedroom suite is built to impress. The sculpted carpeting with high-density padding, quilted fabric headboard and padded valances offer home-like styling. Touches such as a SuperStorage™ wardrobe with two full-width shoe racks and top shelf cedar lining, along with a cedar-lined laundry hamper, provide simple luxuries. More storage can be found by effortlessly lifting the bed to reveal a spacious, carpeted storage area. Two built-in speakers allow you to enjoy music from the Cypress entertainment center. Day-night pleated window shades offer just the desired amount of light to set the mood.

The bathroom area adds more comfort and amenities to the suite. The roomy shower is well lit with an overhead courtesy light and skylight. The sink area is made to please with a laminate countertop with hardwood edging, medicine cabinet with deluxe lighting, toothbrush holder and soap dish. A residential-style toe kick can be found on the door-side vanity. The water closet offers its own Create-A-Breeze™ vent with auto lift. A towel bar and two robe hooks help round out the standard conveniences.



37LSRE shown with optional Diamond Package.



# Suite!





# Newmar Value...

## Quality Circle Award

Newmar has been recognized by the RV Dealer Association Quality Circle Award for its efforts on behalf of customers and dealers.



## Newmar Express Limited Warranty

As proof of our commitment to you, we at Newmar back every Cypress fifth wheel with our industry-leading, one-year Newmar Express Limited Warranty. Ask your dealer for details.



### Roof R Value = 13

- RA
- RB
- RC
- RD
- RE
- RF
- RG
- RH
- RI

- RA.** Strong, durable BriteTEK® Roof
- RB.** "Walkable" Roof Decking
- RC.** Aluminum Rafter Framing
- RD.** Central Air Conditioning Ducting
- RE.** Sikaflex® Adhesive

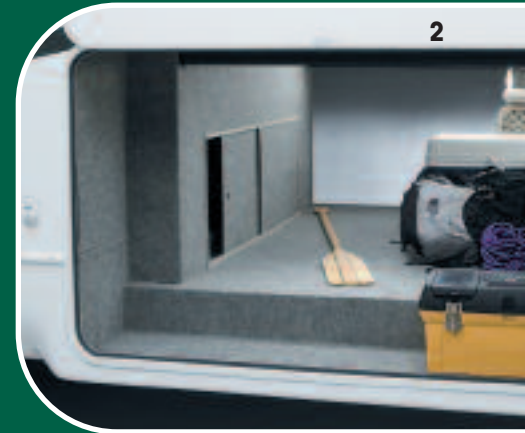
- RF.** R-11 Fiberglass Batten Insulation
- RG.** Aluminum Stringer Framing
- RH.** 3/16" Plywood Ceiling Panel
- RI.** Vinyl Overlay



# in Every Cypress

Your Cypress fifth wheel reflects Newmar's long history of product innovation and industry "firsts." You can depend on the exacting standards and meticulous care by which this fifth wheel is built. It's a showcase for Newmar value.

- A.** Aerodynamic Gelcoated Fiberglass End Caps
- B.** Gelcoated Exterior Sidewall
- C.** Dark Tinted Safety Glass
- D.** Dual Battery Box
- E.** Molded Lower Sidewall Skirting and Gooseneck
- F.** Power Front Jacks w/ Manual Override
- G.** Pass-Through SuperStorage™
- H.** 12" I-Beam Custom-Built Frame
- I.** Full Height Frame Outriggers
- J.** EZ Lube® Hubs
- K.** MOR/ryde® RE Suspension
- L.** Radius Aluminum Roof Wraps
- M.** 15,000 BTU Total Comfort™ Ducted Air Conditioning
- N.** 16" O.C. Aluminum Sidewall Studding
- O.** BriteTEK® Roof
- P.** "Walkable" Roof Decking
- Q.** 16" O.C. Aluminum Roof Rafters
- R.** Side Awning

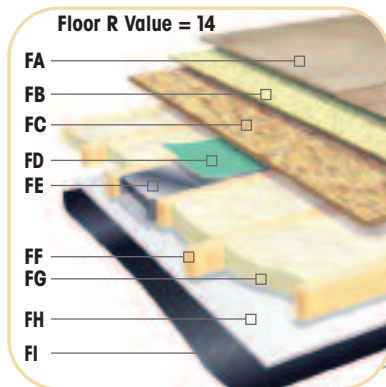


**1.** Cypress rides confidently on 16-inch 8-lug nut Goodyear® G-rated tires as standard equipment (shown with optional polished aluminum wheels).

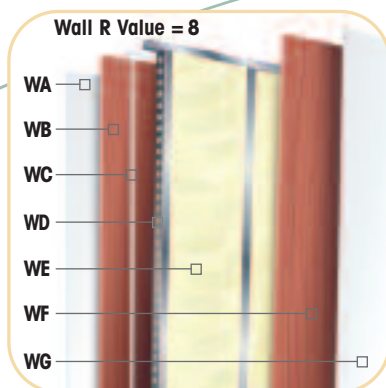
**2.** Expansive pass-through SuperStorage™ area is heated and lighted. It boasts a handy cargo hook and three-way access. It also provides access to the separate utility compartment and houses the water pump for sound isolation.

**3.** The Newmar designed slideout mechanism provides years of smooth, dependable service.

**4.** The electrical box is conveniently located in the water closet and houses 12-volt and 110-volt electrical system circuit breakers with color coded wiring.

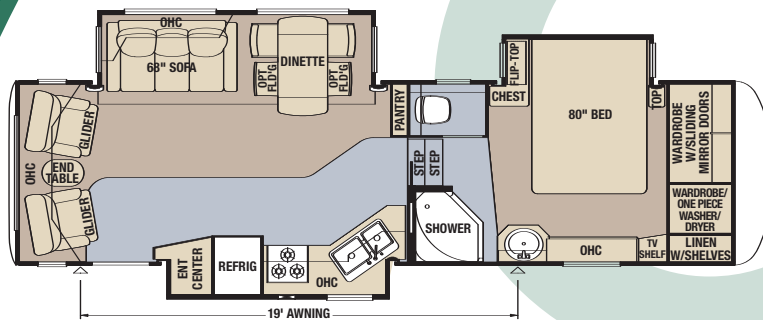


- FA.** Carpet/Vinyl Floor
- FB.** Residential Grade Carpet Padding
- FC.** 5/8" Floor Decking
- FD.** Foam Panel for Added Insulation and Noise Reduction
- FE.** Aluminum Heat Ducting
- FF.** 2" x 3" Wood Floor Joists
- FG.** R-7 Fiberglass Batten Insulation
- FH.** 5/8" Bead Foam Insulation
- FI.** Aluminum Underbelly 4' x 8' Sheets

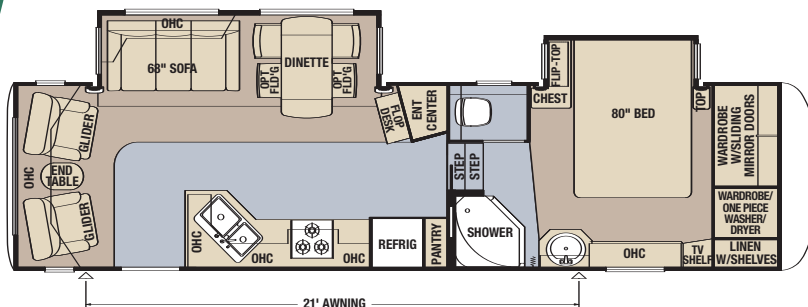


- WA.** Gelcoated Fiberglass Exterior Sidewall
- WB.** 3/16" Plywood Exterior Wall
- WC.** Sikaflex® Adhesive
- WD.** Aluminum Framing with C-Channels
- WE.** R-7 Fiberglass Batten Insulation
- WF.** 3/16" Plywood Interior Wall
- WG.** Vinyl Overlay

Model	CPFW 30KSRE
Tire Size	235/85R16-G
GAWR	6,000
GVWR	14,000
App. Length	33' 7"
App. Height	12' 11"
Width	97"
App. Dry Weight	11,950
App. Hitch Weight	2,270
Fresh Water (gal.)	75
Grey (gal.)	84
Sewage Cap. (gal.)	42
App. Hitch Height	47"
Heat Cap. (BTU)	35,000

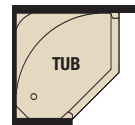
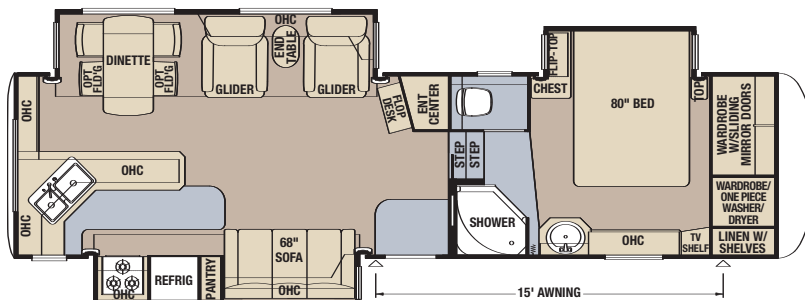


Model	CPFW 32CKRE
Tire Size	235/85R16-G
GAWR	6,000
GVWR	14,625
App. Length	35' 1"
App. Height	12' 11"
Width	97"
App. Dry Weight	11,600
App. Hitch Weight	2,260
Fresh Water (gal.)	75
Grey (gal.)	84
Sewage Cap. (gal.)	42
App. Hitch Height	47"
Heat Cap. (BTU)	35,000



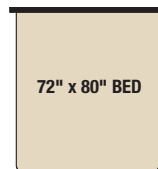
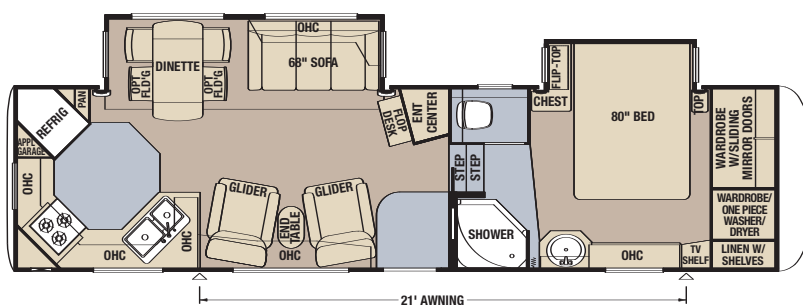
Built-In Booth Dinette with  
(2) Drawers option available on  
all models.

Model	CPFW 32LKSA
Tire Size	235/85R16-G
GAWR	6,000
GVWR	14,625
App. Length	35' 4"
App. Height	12' 11"
Width	97"
App. Dry Weight	12,105
App. Hitch Weight	2,360
Fresh Water (gal.)	75
Grey (gal.)	84
Sewage Cap. (gal.)	42
App. Hitch Height	47"
Heat Cap. (BTU)	35,000



Fiberglass Tub with Glass Door  
option available on all models.

Model	CPFW 32RKSL
Tire Size	235/85R16-G
GAWR	6,000
GVWR	14,625
App. Length	35' 2"
App. Height	12' 11"
Width	97"
App. Dry Weight	11,730
App. Hitch Weight	2,340
Fresh Water (gal.)	75
Grey (gal.)	84
Sewage Cap. (gal.)	42
App. Hitch Height	47"
Heat Cap. (BTU)	35,000



King-Size Bed available on  
all models.

## Optional **Cypress Diamond Package**

- Padded Vinyl Ceiling
- Second Sink Cover
- Halogen Ceiling Lights
- Upgraded Slide Fascias
- Polished Aluminum Rims
- Decorative Wardrobe Header

- Convenience Package: (Hair Dryer, Pillow-Top Mattress, Cordless Vac, Floor Safe, Sofa and Bed Pillows)
- Letter and Key Holder
- Deluxe Living Room Mirror
- Upgraded Headboard w/ Bed-Post Accents
- Rear Ladder

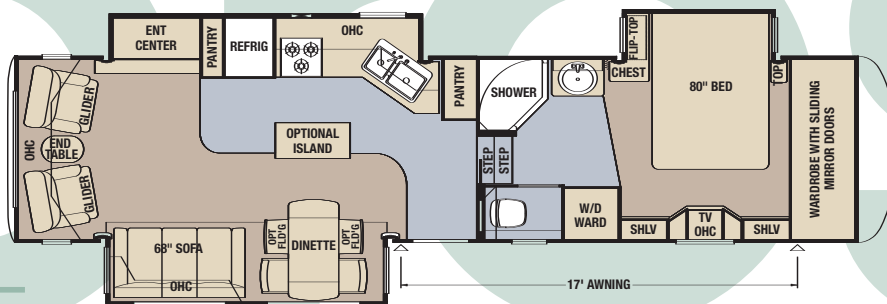
- Tripod SAT Prep
- Washer/Dryer Prep
- 6-Panel Interior Passage Doors
- Polar-Pak R-19 Insulation (roof, floor, front and rear end caps)
- Exterior Vinyl Graphics w/ Partial Paint





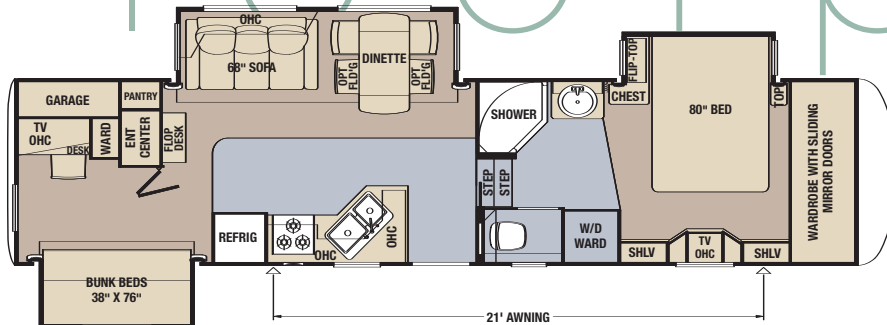
### Model CPFW 35KSRL

Tire Size	235/85R16-G
GAWR	7,000
GVWR	16,250
App. Length	38' 7"
App. Height	12' 11"
Width	97"
App. Dry Weight	12,920
App. Hitch Weight	2,585
Fresh Water (gal.)	75
Grey (gal.)	84
Sewage Cap. (gal.)	42
App. Hitch Height	47"
Heat Cap. (BTU)	35,000



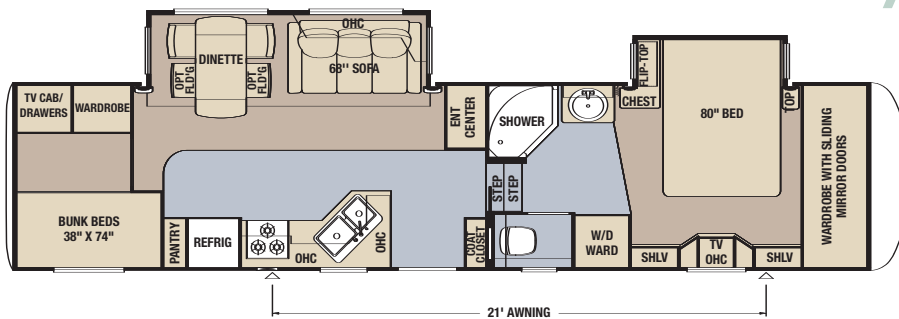
### Model CPFW 35RBCK

Tire Size	235/85R16-G
GAWR	7,000
GVWR	16,250
App. Length	38' 7"
App. Height	12' 11"
Width	97"
App. Dry Weight	13,260
App. Hitch Weight	2,555
Fresh Water (gal.)	75
Grey (gal.)	84
Sewage Cap. (gal.)	42
App. Hitch Height	47"
Heat Cap. (BTU)	35,000



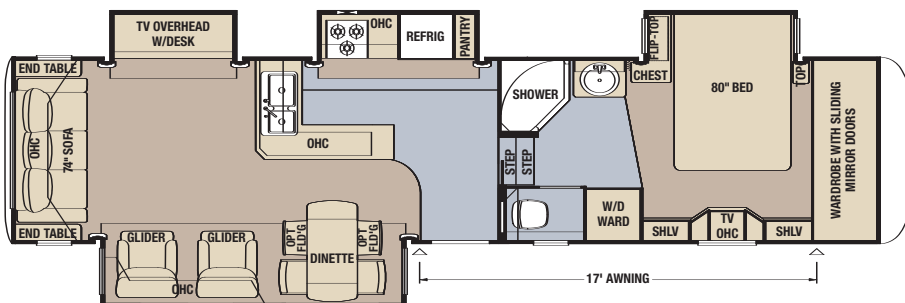
### Model CPFW 36CKDB

Tire Size	235/85R16-G
GAWR	7,000
GVWR	16,250
App. Length	38' 10"
App. Height	12' 11"
Width	97"
App. Dry Weight	12,655
App. Hitch Weight	2,530
Fresh Water (gal.)	75
Grey (gal.)	84
Sewage Cap. (gal.)	42
App. Hitch Height	47"
Heat Cap. (BTU)	35,000



### Model CPFW 36PKRL

Tire Size	235/85R16-G
GAWR	7,000
GVWR	16,250
App. Length	39' 7"
App. Height	12' 11"
Width	97"
App. Dry Weight	13,565
App. Hitch Weight	2,645
Fresh Water (gal.)	75
Grey (gal.)	84
Sewage Cap. (gal.)	42
App. Hitch Height	47"
Heat Cap. (BTU)	35,000



Standard Vinyl Graphics

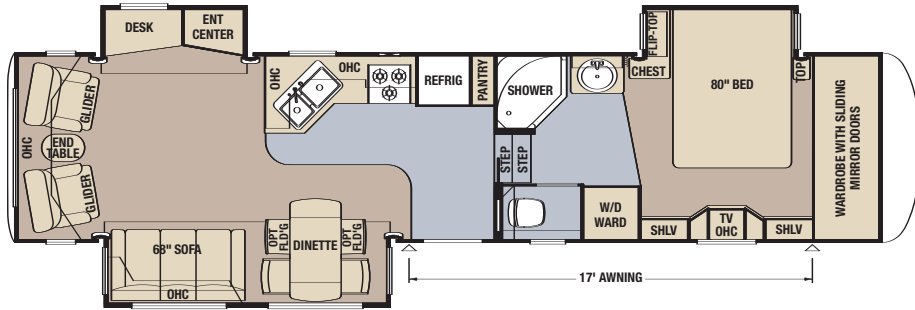


Optional Vinyl Graphics w/ Partial Paint

ready  
when you are

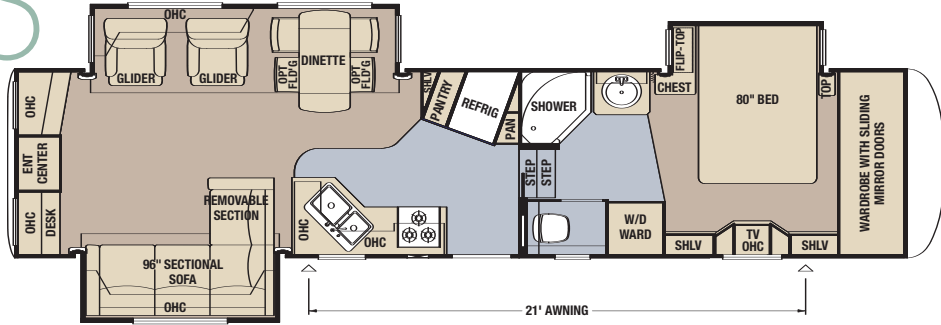
### Model CPFW 36RLSK

Tire Size	235/85R16-G
GAWR	7,000
GVWR	16,250
App. Length	38' 11"
App. Height	12' 11"
Width	97"
App. Dry Weight	12,970
App. Hitch Weight	2,595
Fresh Water (gal.)	75
Grey (gal.)	84
Sewage Cap. (gal.)	42
App. Hitch Height	47"
Heat Cap. (BTU)	35,000



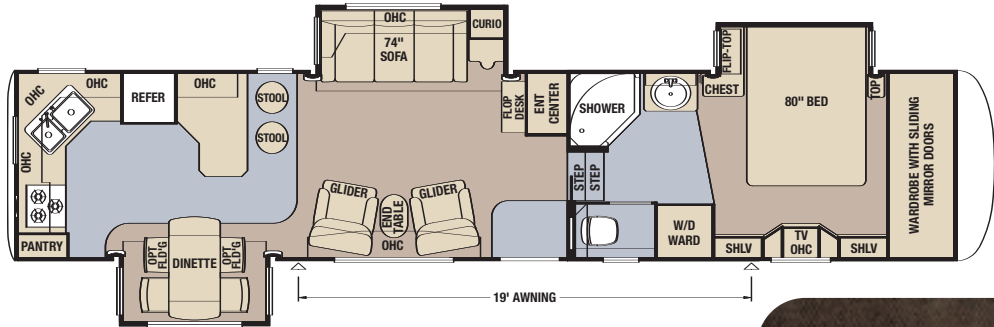
### Model CPFW 37LSRE

Tire Size	235/85R16-G
GAWR	7,000
GVWR	16,250
App. Length	40' 1"
App. Height	12' 11"
Width	97"
App. Dry Weight	13,360
App. Hitch Weight	2,670
Fresh Water (gal.)	75
Grey (gal.)	84
Sewage Cap. (gal.)	42
App. Hitch Height	47"
Heat Cap. (BTU)	35,000



### Model CPFW 39CLSK

Tire Size	235/85R16-G
GAWR	7,000
GVWR	16,250
App. Length	41' 11"
App. Height	12' 11"
Width	97"
App. Dry Weight	13,570
App. Hitch Weight	2,675
Fresh Water (gal.)	75
Grey (gal.)	84
Sewage Cap. (gal.)	42
App. Hitch Height	47"
Heat Cap. (BTU)	35,000



## Interior Color Options

(Standard)  
Tucson Ash



(Standard)  
Vinyl Flooring



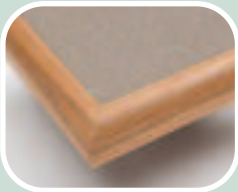
(Optional)  
Plank Flooring



Truffle



(Standard)  
Countertop



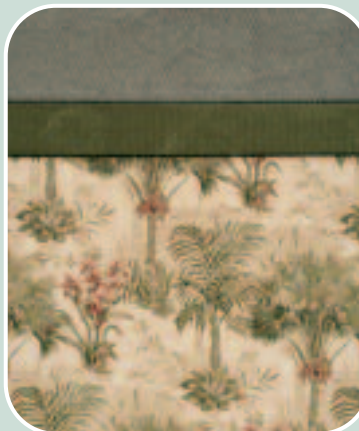
(Standard)  
Hardware



Lakeside



Palm



South Beach





# CYPRESS Great 8 Value



Stylish and comfortable Hide-A-Bed sofa.



"Super Slider" freestanding dinette table and (2) fixed chairs, all with hidden storage compartments.



Comfortable gliding, reclining chairs (per floorplan), plus end table with magazine rack.



Insulated and heated holding tanks are protected by the fully-enclosed underbelly.



Conveniently located dual battery box compartment accepts your choice of RV batteries.



Undermounted 16-inch G-rated Goodyear® spare tire is easy to access with lift kit.



EZ Lube® axles allow RVers to periodically lubricate the bearings without removing hubs from the axles. (Shown with optional polished aluminum wheels.)



Dark tinted safety glass windows provide protection from sun and added privacy—and enhance the RV's distinctive good looks.

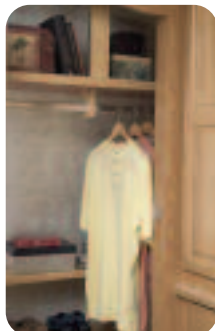
## Standard Interior Value Features



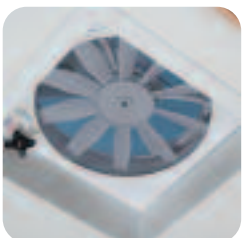
Fully adjustable sliding pantry drawers provide plenty of storage!



Spacious, one-piece fiberglass shower with easy-to-clean molded seat and glass enclosure.



SuperStorage™ bedroom wardrobe with (2) full-width shoe racks and top shelf cedar lining.



Create-A-Breeze™ vent with automatic lift in water closet.



15,000 BTU Total Comfort™ central air conditioning system is engineered and ducted to effectively cool all living areas.

(Shown with optional Create-A-Breeze™ vent.)

## Standard Exterior Value Features



MOR/ryde® RE suspension significantly cushions and absorbs road shock to provide a softer ride and smoother, safer towing.



Late-night hook-up light at sewer hose termination point.



In-line water filter helps ensure plenty of clean, clear water wherever you travel.

## Optional Features

### Air Conditioner & Heating

15,000 BTU Penguin™ AC\*

15,000 BTU Penguin™ Heat Pump AC\*

Extra 13,500 BTU Penguin™ AC in Bedroom  
Wire & Brace for Second AC in Bedroom

### Appliances & Accessories

14" Flat Screen TV in Bedroom

14" Flat Screen TV in Bunkroom\*\*

26" LCD TV in Ent. Center\*\*

32" LCD TV in Ent. Center\* (37LSRE Only)

Icemaker Added to Refrigerator\*\*

Norcold 10 cu. ft. Refrigerator

22" Convection Microwave & 3-Burner Plate

Convenience Package:

Includes Floor Safe, Hair Dryer, Cordless Vac,  
Pillow-top Mattress & Sofa Bed Pillows †

Central Vacuum w/ Floor Port & Tool Kit

Electric Fireplace\*\*

Entertainment Center w/ Pull-Out Swivel/Slide  
Tray at Main TV\*\*

Prep for Ground Tri-Pod Sat. Dish w/ Phone,  
TV Jack and Recept †

Roof-Mount Satellite Dish

Prep for Washer & Dryer †

Compact Washer & Dryer\*\*

Stackable Washer & Dryer\*\*

### Cabinets & Furniture

Built-In Booth Dinette

First Faux Leather, Euro Recliner  
w/ Ottoman\*/\*\*

Second Faux Leather, Euro Recliner  
w/ Ottoman\*/\*\*

72" x 80" King Bed w/ King Coil Mattress

Island Kitchen Base Cabinet (35KSRL Only)

Kitchen Countertop Extension\*\*

Fixed Dinette Chairs (2) w/ In-Seat Storage

Folding Dinette Chairs (2) w/ In-Seat Storage

Folding Desk Chair\*\*

Freestanding Sofa Ottoman w/ Storage

### Electrical Features

7.0 kW Onan® Generator w/ Energy  
Command, Auto Changeover\*\* (Includes Prep)

Gen Prep (Includes Energy Command, Start Switch,  
Fuel Tank & Gauge)

Battery Disconnect Switch for House Battery

Halogen Ceiling Lights Throughout †

Solar Prep (Includes Wire from Roof  
to Battery Compartment)

### Exterior Features

Bike Rack Carrier

Cargo Net in Pass-Through SuperStorage™

Exterior Pull-Out Storage Tray

Rear 12V Power Twin Stabilizer Jacks\*

Rear Ladder\*\* †

### Interior Features

Simulated Plank Floor in Kitchen & Foyer

Second Sink Cover †

### Plumbing/Bath Features

Exterior Shower (Located on Off-Door Side)

Fiberglass Tub w/ Glass Door

12V Heat Pads for Holding Tanks (N/A on CSA Units)

### Towable Chassis Features

3" Non-Adjustable Lift Kit

MOR/ryde® Rubber Pin Box

Polished Aluminum Wheels †

### Construction Features

PolarPak R-19™ Insulation in Roof, Floor,  
Front & Rear End Caps †

# 2007 CYPRESS Fifth Wheel

## Standard Features

### Air Conditioning & Heating

15,000 BTU Total Comfort™ Central AC

(2) 30-lb. Propane Gas Bottles w/  
Auto. Regulator

35,000 BTU Furnace w/ In-Floor Ducted Heat  
LP Leak Detector

### Appliances & Accessories

10 Gal. Gas/Electric DSI Water Heater  
Microwave

Entertainment Package:

24" TV & Surround Sound System w/ DVD,  
CD & AM/FM Stereo Tuner

8 cu. ft. Refrigerator w/ Thermostat

3-Burner Cooktop w/ Piezo Ignition

22" Oven

Flush-Mounted, Metal Bi-fold Range Cover

Cable TV Connection w/ RG-6 Coax

Living Room Ceiling Fan

Corian® Knife Block behind Range

Hardwood, Raised, 6-Panel Refrigerator Front

Magazine Rack in Water Closet\*\*

Paper Towel Holder in Kitchen

Range Hood w/ Light & Fan

Phone Jack in Living/Kitchen Area

TV Antenna w/ Power Booster  
& (2) Interior Jacks

Bedroom Speakers (2) w/ On/Off  
Toggle Switch

### Cabinets & Furniture

Tucson Ash, Hardwood Raised-Panel  
Cathedral OHC Doors

Pre-Drilled and Screwed Cabinetry

Hide-A-Bed Sofa

Glider/Recliner Chairs\*\*

Bar Stools\*\*

Chair End Table w/ Magazine Rack\*\*

Metal Drawer Guides

"Super Slider" Freestanding Dinette Table  
w/ Lift-Top Storage

(2) Fixed Dinette Chairs w/ In-Seat Storage

Laminate Kitchen & Bath Countertops  
w/ Hardwood Edging

Acrylic Kitchen & Bath Sinks

SuperStorage™ Bedroom Wardrobe w/  
(2) Full-Width Shoe Racks & Top Shelf  
Cedar Lining

Laundry Hamper w/ Cedar Lining

Hydraulic Lifts on Bed Top

Kitchen Pantry\*\*

Living Room Mirror\*\*

Computer Desk\*\*

Decorative Bedroom Dresser Toe Kick

60" x 80" Queen Innerspring Mattress

### Windows, Awnings & Vents

Carefree™ 1-Touch Awning w/ Wind Smart  
Sensor & Remote

Carefree™ Summit Slideout Cover Package

Create-A-Breeze™ Vent w/ Auto. Lift in Kitchen

Create-A-Breeze™ Vent w/ Auto. Lift over Bath Sink

Clear Skylight in Bath, Kitchen & Living Room

CSA (Canadian Dealers Only)

Double-Pane, Tinted Safety Glass Windows

State Seal for KY, NE, OR & WA

### Exterior & Interior Décor Choices

Exterior Vinyl Graphics w/ Painted Skirt

Lakeside South Beach Palm Truffle

### Electrical Features

12V Lighting Throughout (Not Including Dinette)

50 Amp Electrical Service w/ Detachable Cord

55 Amp Converter

Convenience Lights at:

Main Entry Door, Entry Door Step, Sewer Hook-Up,  
Hitch & Water Works Compartments

Decorative Light over Dinette

Dual Battery Box Compartment

Dual Exterior Security Lights

Fluorescent Light over Kitchen Sink

Lighted Exterior Storage Compartments

Wall Reading Lights in Living Area Slideouts

### Exterior Features

Vinyl Graphics

30" Gelcoated, Radius Entry Door

BriteTEK™ Roof w/ "Walkable" Decking  
& Radius Aluminum Roof Wrap

Cargo Hook in Exterior Storage Area

Extendable Grab Handle at Entrance Door

Gelcoated Exterior Sidewalls & Baggage Doors

Gelcoated Fiberglass End Caps

Molded Gooseneck & Pass-Through  
Storage Wraps

Molded Fender Wells

Power Front Jacks

Quick Release H/D Pin for Front Jack Legs

Rear Skid Bars Prepped for Bike Rack  
Attachment

Rear Stabilizer Jacks

Triple Entrance Door Step

Heated Pass-Through SuperStorage™  
Basement Compartment

Dedicated Compartment in Basement  
for Utilities

### Interior Features

Sculpted Carpet w/ High-Density Padding  
in Living Room & Bedroom

Vinyl Floor in Kitchen, Foyer & Bath

Fire Extinguisher, Smoke Detector & Carbon  
Monoxide Detector

Day/Night Pleated Window Shades w/ Jabots  
in Living Room & Bedroom

Decorative Wall Border

Interior Assist Handle at Main Entry Door

Kitchen Wastebasket

Lazy Susan in Kitchen OHC\*\*

Quilted Bedspread w/ Shams

Quilted Fabric Headboard w/ Beveled Mirrors

Molded Silverware Divider Tray

Teflon® Sink Cover

Laminate Woodgrain Steps w/ Hardwood  
Bullnose Trim

Décor Glass Accents in Living Room

### Plumbing/Bath Features

Bath Accessories:

Toilet Paper Holder, Toothbrush Holder, Soap Dish,  
Towel Bar & (2) Robe Hooks

One-Piece Fiberglass Shower w/  
Molded Seat & Glass Enclosure

High Rise Kitchen Faucet w/ Single Lever  
Control and Separate Pull-Out Sprayer

Medicine Cabinet w/ Deluxe Lighting

Monitor Panel

Sewage Holding Tank Rinse

Sewage Hose Storage Tray

Lighted, Heated and Enclosed Exterior Water  
Works Compartment

Thetford™ Aqua Magic Toilet w/ Sprayer

Shower Courtesy Light

In-Line Water Filter

Water Heater Bypass

### Construction Features

12" I-Beam Custom-Built Frame

5/8" Structurewood Floor Decking

Aluminum Framed Sidewalls, Roof,  
Front & Rear on 16" Centers

Fully Heated & Insulated Holding Tanks

Enclosed Underbelly w/ 4'x8' Sheets  
of Aluminum Laminated to 5/8" Bead  
Foam Insulation

Extended Pin Box

Composite R-Values of...  
Roof R-13, Sidewall R-8, Floor R-14

### Windows, Awnings & Vents

Create-A-Breeze™ Vent w/ Automatic  
Lift in Water Closet

Carefree® Fiesta Side Awning

Bathroom Window, Blind and Valance

Dark Tinted Safety Glass Windows

Shower Skylight

Decorative Window Treatments w/ Jabots

Large Picture Window in Dinette

### Chassis Features

Undermounted 16" G-Rated Goodyear®  
Spare Tire w/ Lift Kit

MOR/ryde® RE Suspension

EZ Lube® Axles

16" G-rated Goodyear® Tires

\* in lieu of standard

\*\* as shown in floorplan

† included in Diamond Package



WHEN YOU KNOW THE DIFFERENCE™

#### NEWMAR CORPORATION

355 N DELAWARE ST PO BOX 30

NAPPANEE IN 46550-0030

574-773-7791 Fax 574-773-2895

www.newmarcorp.com

#### Your Official Cypress Dealer:

Cypress on cover shown with optional polished aluminum rims and optional vinyl graphics with partial paint. Some features in our literature are optional. Colors and finishes are photographic representations. The actual materials may look different. Prices, specifications and floorplans are subject to change at Newmar's discretion, without prior notice or obligation. Please see your dealer for actual samples and specifications.

©2006 Newmar Corporation. Litho in USA. NEW21252 5/06-30M