

KOUNTRY STAR
2007 || DIESEL MOTORHOME



KOUNTRY STAR
2007 || DIESEL MOTORHOME



PULLOUT FAUCET

The kitchen sink's single-lever faucet has a pullout spout for easier use. The sink itself is undermounted and comes with flush-fitting solid-surface covers to match the countertop.



WASHER/DRYER

This optional space- and energy-saving washer/dryer combo will help keep your clothing fresh and clean throughout your travels.

WISHING ON A STAR DOES HAVE ITS REWARDS.

We know you've thought it: Ah, if only fine RV living came at a price more within reach. Well, at Newmar, we've done something about that. You've got your wish in the dazzling Kountry Star. What's dazzling about it is its simple beauty, the care of its craftsmanship and the range of its amenities, all of which look like they'd cost a fortune—but don't. Of course, that's exactly what makes the Kountry Star a Newmar, through and through. It's a reflection of all we've learned about value, and you get to bask in the glow. So, is wishing on a star really worth your while? Depends on which star you wish upon.





A RESTFUL NIGHT

Kountry Star bedrooms feature redesigned cabinetry to accommodate a second satellite receiver and the optional washer/dryer combo. The lavatory countertops feature Gemstone bowls and provide an added touch of refinement.

SPACIOUS LIVING

With its 84-inch ceiling height and expansive slideouts, Kountry Star gives you plenty of room for large-scale living wherever you roam.





TAKE COMMAND...IN COMFORT.

Kountry Star's Flexsteel® Ultra Leather cockpit seats provide an added level of comfort with six-way power adjustment, power lumbar and Ergo-Flex arms. A one-piece windshield is now standard.



EXTERIOR ENTERTAINMENT

A popular option, this enclosed entertainment system includes an LCD flatscreen color TV mounted on a swing-out arm, an AM/FM stereo with a CD player and two speakers.



PASS-THROUGH STORAGE

Stow all your favorite travel gear—from either side of the coach—in this huge exterior pass-through compartment. Side-hinged swing-out doors give you easy access, as do the optional slideout trays.



CONVENIENCE ABOUND

The Kountry Star's redesigned bed base opens to reveal a storage box that can accommodate the dinette's folding chairs.

NEW EXTERIOR GRAPHICS

This year's more richly detailed Full-Paint Masterpiece Finish™ exterior graphics give the Kountry Star an even sleeker, bolder look.

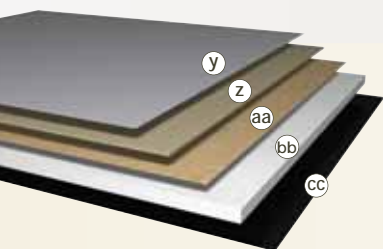


CEILINGS: R-VALUE = 16

- a. BriteTEK™ Roof
- b. 9 mm Wood Decking
- c. Fiberglass Batten Insulation
- d. A/C Ducting
- e. Aluminum Roof Truss
- f. Kraft Paper Vapor Barrier
- g. 5/8" Bead Foam
- h. 3/16" Panel
- i. Padded Vinyl Overlay

WALLS: R-VALUE = 11

- j. 3/16" Plywood Interior Wall
- k. 5/8" Bead Foam
- l. Kraft Paper Vapor Barrier
- m. Fiberglass Batten Insulation
- n. 3/16" Plywood Exterior Wall
- o. Composite One-piece Gelcoat Exterior Sidewall
- p. 16" On-center Aluminum Framing with 3 1/2" Header



BASEMENT: R-VALUE = 4

- y. Cargo Liner
- z. 3/8" Floor Decking
- aa. 3/16" Luan Panel
- bb. 1 1/2" Bead Foam
- cc. Aluminum Sheeting (Prevents Distortion)

FLOORING: R-VALUE = 16

- q. Carpet/Tile
- r. Carpet Padding
- s. 5/8" Floor Decking
- t. Fiberglass Batten Insulation
- u. 2" x 3" Wood Framing
- v. Polyethylene Moisture Barrier
- w. Foam Panels (Noise Reduction)
- x. Aluminum Ducting

1. 13.5M Penguin™ Heat Pump Central Air Conditioners (2)
2. One-piece Windshield
3. Coated Aluminum Wheels
4. Double-pane Tinted Safety-glass Windows
5. Side-hinged Baggage Doors with Pullout Tray



NEWMAR TOTAL COMFORT™ CENTRAL AIR CONDITIONING

Experience RV air conditioning just like that found in site-built homes. Newmar's Total Comfort Central Air Conditioning is actually two separate, fully ducted systems: one to distribute incoming cool air, the other to quickly and effectively remove warm air from every living area.

PROTECTED C-CHANNELS

To keep the electrical wiring that runs through holes in the aluminum-frame C-channels from chafing, each hole is ringed with a rubber grommet.

SIKAFLEX®

Used throughout Newmar construction, Sikaflex® elastic adhesive is one of the strongest bonding agents on the market today. It also serves as a sealant against air and water. And it helps dampen both sound and vibration.

16" ON-CENTER FRAMING

Just like a fine site-built residential home, your Newmar home is framed 16 inches on center, which allows the best placement of outlets, switches and other components.





BLACK OPAL



CARAMEL



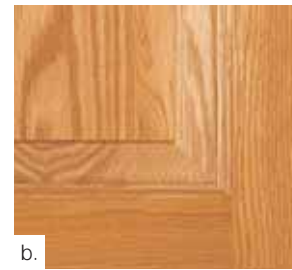
CRANBERRY



TENDER GREEN



a.



b.



c.



d.



e.



f.



g.



h.



i.



WOOD FINISHES & INTERIORS

- a. Tucson Oak Cabinetry, Standard
- b. Mesa Oak Hardwood Cabinetry
- c. Coastal Cherry Hardwood Cabinetry
- d. Summer Maple Hardwood Cabinetry
- e. Velvet Cherry Hardwood Cabinetry
- f. Black Opal Color Scheme with flooring options (top to bottom): simulated marble (standard), ceramic and plank (matches cabinetry)
- g. Caramel Color Scheme with flooring options (top to bottom): simulated marble (standard), ceramic and plank (matches cabinetry)
- h. Cranberry Color Scheme with flooring options (top to bottom): simulated marble (standard), ceramic and plank (matches cabinetry)
- i. Tender Green Color Scheme with flooring options (top to bottom): simulated marble (standard), ceramic and plank (matches cabinetry)

Some features shown in our literature are optional. Colors and finishes are photographic representations. The actual materials may look different. Prices, specifications and floorplans are subject to change at Newmar's discretion, without prior notice or obligation. Please see your dealer for actual samples and specifications.

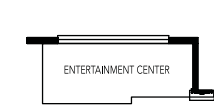
FULL-PAINT MASTERPIECE FINISH™

Newmar's Full-Paint Masterpiece Finish raises the exterior beauty and durability of our motorhomes to a whole new level. This model year, we're offering our richest-looking graphics ever—to lend even more character and class. As industry leaders in applying full body paint to motorhome coaches, we at Newmar are pleased to offer the Full-Paint Masterpiece Finish as a Kountry Star Diesel Motorhome standard.

DETAILS, DETAILS, DETAILS. Go ahead. Get close. Real close. You'll see that this motorhome's comfort and styling aren't superficial: They're built into the very weave of our fabrics, the very grain of our cabinets and every nook and cranny you might want to scrutinize. After all, it's details that make the Newmar difference.

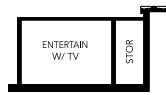
FLOORPLANS & OPTIONS

 Carpet  Simulated Marble Flooring



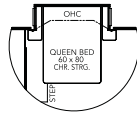
J583

56" Entertainment Center
3915



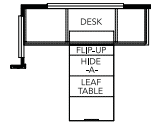
J583-2

41.5" Entertainment Center
3916



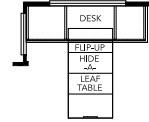
K031

Queen Bed (ILO King)
3621, 3624, 3912, 3915, 3916



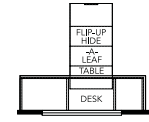
K125

Combination Desk Dinette
3623, 3917



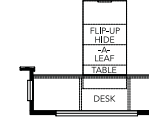
K125-2

Combination Desk Dinette
3910, 3912, 3914



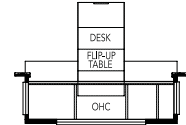
K125-3

Combination Desk Dinette
3621, 3915



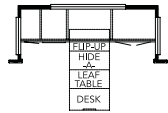
K125-4

Combination Desk Dinette
3916



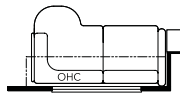
K125-5

Combination Desk
3624



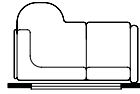
K125-6

Combination Desk
3622



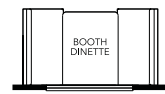
K201

72" L-lounge Sofa
3622, 3910, 3912



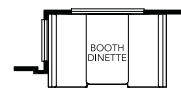
K206

58" L-lounge Sofa
3917



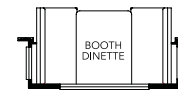
K273-2

Booth Dinette
3915, 3621



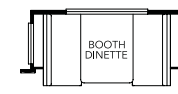
K273-3

Booth Dinette
3623



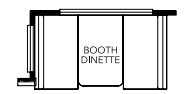
K273-5

Booth Dinette
3624



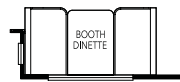
K273-6

Booth Dinette
3622



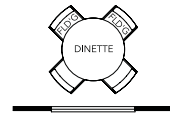
K276

Booth Dinette
3910, 3912, 3914



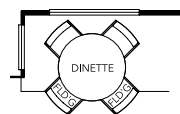
K276-2

Booth Dinette
3916



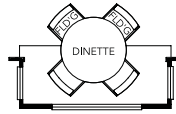
K541

Round Dinette
3621, 3915



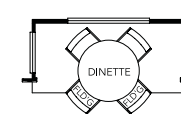
K541-2

Round Dinette
3623, 3910, 3912, 3914, 3917



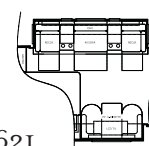
K541-3

Round Dinette
3624



K541-5

Round Dinette
3622



K621

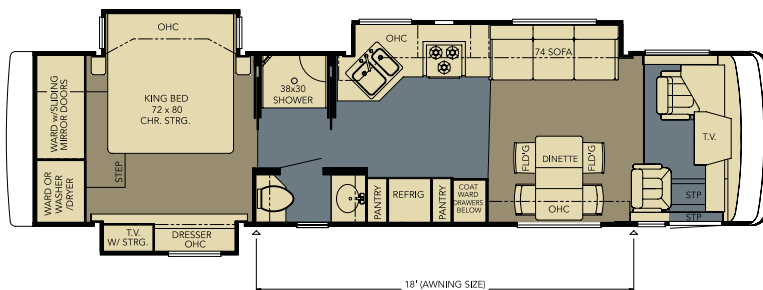
Theatre Seating Option
3910

KSDP 3621

Length: 36' 7"
Width: 101.5"

Options:

- K031
- K125_3
- K273_2
- K541

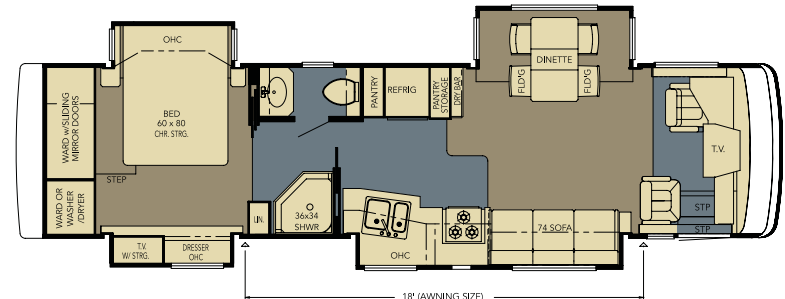


KSDP 3622

Length: 36' 7"
Width: 101.5"

Options:

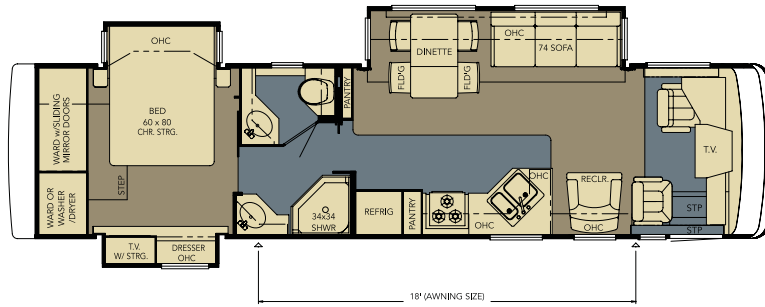
- K125_6
- K201
- K273_6
- K541_5



KSDP 3623

Length: 36' 7"
Width: 101.5"

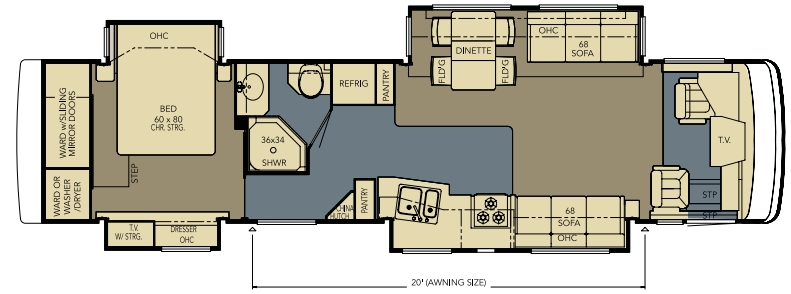
Options:
• K125
• K273_3
• K541_2



KSDP 3914

Length: 39' 2"
Width: 101.5"

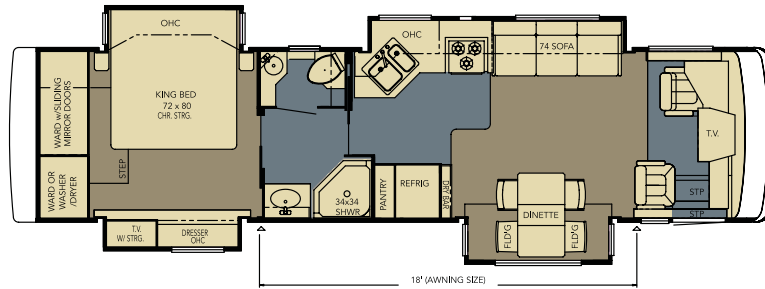
Options:
• K125_2
• K276
• K541_2



KSDP 3624

Length: 36' 7"
Width: 101.5"

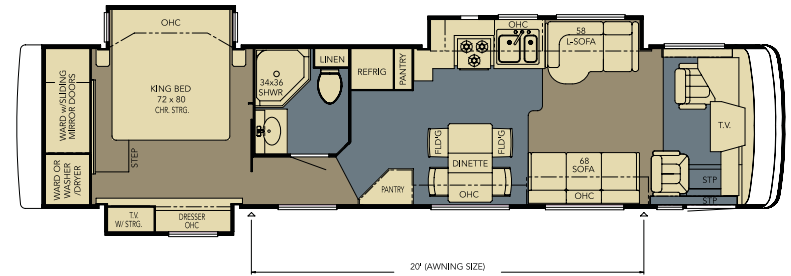
Options:
• K031
• K125_5
• K273_5
• K541_3



KSDP 3915

Length: 39' 2"
Width: 101.5"

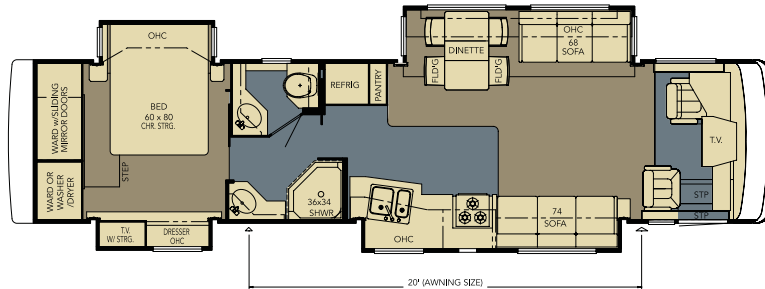
Options:
• J583
• K031
• K125_3
• K273_2
• K541



KSDP 3910

Length: 39' 2"
Width: 101.5"

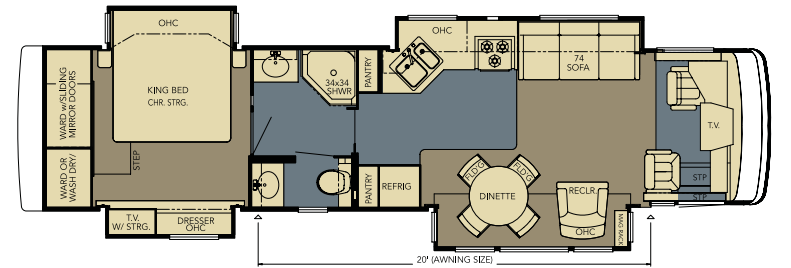
Options:
• K125_2
• K201
• K276
• K541_2
• K621



KSDP 3916

Length: 39' 2"
Width: 101.5"

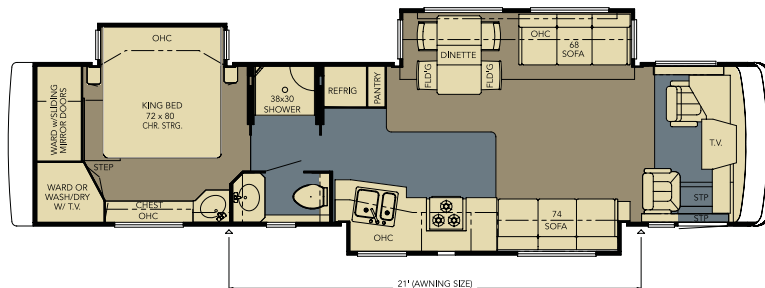
Options:
• J583_2
• K031
• K125_4
• K276_2



KSDP 3912

Length: 39' 2"
Width: 101.5"

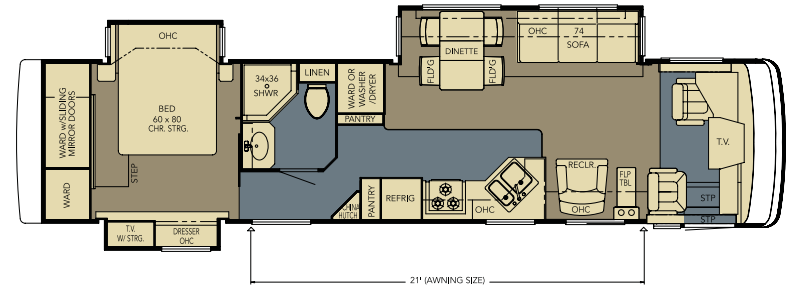
Options:
• K031
• K125_2
• K201
• K276
• K541_2



KSDP 3917

Length: 39' 2"
Width: 101.5"

Options:
• K125
• K206
• K541_2



STANDARD FEATURES

CHASSIS FEATURES

- Spartan® Mountain Master GT Chassis with IFS
- Cummins® ISL 350 hp with Side Radiator
- Exhaust Brake
- Electric Leveling Jacks with Touch Control
- Cruise Control
- Tilt-and-Telescope Steering Wheel
- Coated Aluminum Wheels
- Recessed Fuel Fills with Crossover to Fill from Either Side
- Back-up Alarm
- Anti-lock Braking System
- Electronic Chassis Information Center in Dash

AIR CONDITIONING & HEATING

- Two 13.5M Penguin™ Heat Pump Central Air Conditioners
- Propane Furnace with In-floor Ducted Heat
- Dash Heater and High-output Air Conditioner
- Propane Leak Detector

APPLIANCES & ACCESSORIES

- 30" Convection Microwave
- Three-burner Cooktop with Piezo Ignition
- Solid-surface Range Cover
- Dometic® 10 cu. ft. Refrigerator
- Hardwood Raised-panel Refrigerator Front
- 10 gal. Gas/Electric Water Heater with Direct-spark Ignition
- One-piece Washer/Dryer Prep
- Sony® Flatscreen Color TV in Living Area
- Flatscreen Color TV in Bedroom
- AM/FM Dash Radio with Cassette and CD Player
- Sony® Surround Sound Home Theater System with Single-disc DVD Player
- Rearview Color Monitor System
- TV Antenna with Power Booster and Two Interior Jacks
- Satellite Prep—Phone, TV Jack and Receptacle
- Telephone Connection with Phone Jacks in Living and Dash Area
- Two Bedroom Radio Speakers with On/Off Switch
- Roof-mounted Air Horns
- 10 Bc Fire Extinguisher, Carbon Monoxide and Smoke Detectors

CABINETS & FURNITURE

- Oak Cabinets with Raised-panel Arched Cabinet Doors
- Hidden-leaf Dinette Table with Two Fixed and Two Folding Chairs*
- Round Hardwood Dinette Table with Two Fixed and Two Folding Chairs*
- Solid-surface Countertop in Kitchen with Undermounted Acrylic Sink and Flush Sink Covers
- Solid-surface Countertop with Integrated Bowl in Bathroom
- Residential-style Full-extension Ball-bearing Drawer Guides
- Flexsteel® Furniture
- Pullout Pantry Shelves*
- Ultra Leather Cirrus Driver/Passenger Seats with Six-way Power, Power Lumbar, Ergo-Flex Arms and Passenger Footrest
- Lifts on Bed Top to Access Storage Area
- Tufted Mattress with Quilted Bedspread, Reverse Shams and Accent Pillows
- King Bed*

ELECTRICAL FEATURES

- 8.0 kW PowerTech Diesel Quiet Series Generator
- 50 Amp Electrical Service with Flexible Cord
- Four 6 Volt House Batteries on Pullout Tray
- Battery Disconnect Switch
- 110 Volt Exterior Receptacle on Door Side
- 5 Watt Solar Panel
- 2000 Watt Inverter
- Emergency Start Switch
- Exterior Security Lights, One on Each Side
- Midship Side Turn Signals
- Switched Receptacle for Engine Block Heater
- Fluorescent Lights Throughout
- Lighted Wardrobe
- Slideout Information Voice Module
- Manually Operated Hold-to-Run Slideout Switch
- ICC Light Switch
- Two 12 Volt Auxiliary Receptacles on Dashboard
- Exterior TV Jack on Door Side
- Interior Courtesy Lights

EXTERIOR FEATURES

- Full-Paint Masterpiece Finish™ with Diamond Shield Front Protective Film
- One-piece Windshield
- Convex Exterior Mirrors with Remote Control, Defrost and Turn Signals

- Automatic Entrance Door with Double Step
- Front Entry Door with Power Flush Stepwell Cover
- Side-hinged Baggage Doors (Except Door for Exterior Entertainment Center)
- Lighted Exterior Storage Compartments with Cargo Liner, Controlled by Interior Master Switch
- 10,000 lb. Towing Hitch with Two Extra 14 Gauge Wires
- Lighted Acrylic Assist Handle at Entrance Door
- Rear Protective Full-width Tow Guard
- Rear Ladder
- Undercoating
- Mud Flaps

INTERIOR FEATURES

- Padded Vinyl Ceiling
- Day/Night Pleated Window Shades and Lambrequins
- Mini-blinds in Kitchen and Bath Areas
- Simulated Marble Floor in Kitchen, Bathroom and Driver/Passenger Area
- Deluxe Carpeting with High-density Padding in Living Room and Bedroom
- Flat-panel Interior Passage Doors
- Interior Assist Handle at Main Entrance Door
- Sun Shades on Driver and Passenger Side Windows
- Wraparound Windshield Privacy Shade

PLUMBING & BATH FEATURES

- Demand Water System with SHURflo® Pump
- Sewage Holding-tank Rinse
- Water Heater Bypass System
- Thetford™ Aqua Magic Plus China Bowl with Spray Attachment
- Towel Bars, Tissue Holder and Robe Hook
- Fiberglass Bathtub/Shower with Glass Shower Door
- Monitor Panel
- Water Pump Switches Located in Bathroom, Kitchen and Exterior Near Gate Valves
- Exterior Shower

WINDOWS, AWNINGS & VENTS

- Double-pane Tinted Safety-glass Windows
- Fan-Tastic® Vent with Rain Sensor in Kitchen and Bathroom Areas
- Skylight in Bathroom
- A&E® 9000 Side Awning
- A&E® Slideout Awning Covers
- Cockpit Overhead Ventilation System

*CHECK WITH DEALERSHIP ON FLOORPLAN AVAILABILITY

OPTIONAL FEATURES

CHASSIS FEATURES

- Cummins® 400 HP ISL Engine (39' Floorplans)
- Hydraulic Leveling Jacks

AIR CONDITIONING & HEATING

- Auxiliary Heater in Bedroom

APPLIANCES & ACCESSORIES

- Three-burner Range with Oven and Piezo Ignition
- Dometic® 12 cu. ft. Side-by-Side Refrigerator
- Norcold® 12 cu. ft. Four-door Refrigerator with Icemaker and Water Dispenser
- Icemaker Added to Refrigerator*
- Norcold® Freezer on Pullout Tray
- One-piece Washer/Dryer*
- Two-piece Washer/Dryer in Rear Wardrobe*
- SIRIUS® Satellite Radio Capability (Does not include monthly subscription)
- 10-disc CD Player
- External Entertainment Center with 26" LCD TV, AM/FM Radio and CD Player
- 26" Flatscreen LCD TV in Front Overhead
- 26" Flatscreen LCD TV at Dry Bar*
- Automatic Satellite without Receiver
- In-motion Satellite without Receiver
- Sideview Cameras
- CB Radio with Antenna
- CB Antenna

CABINETS & FURNITURE

- Summer Maple Hardwood Cabinets
- Mesa Oak Hardwood Cabinets
- Coastal Cherry Hardwood Cabinets
- Velvet Cherry Hardwood Cabinets
- Ultra Leather Cirrus Freestanding Swivel Rocker*
- Ultra Leather Cirrus Swivel Rocker*
- Ultra Leather Cirrus L-lounge*
- Ultra Leather Cirrus Sofa*
- Hide-a-Bed Sofa*
- Ultra Leather Cirrus Hide-a-Bed Sofa*
- Ultra Leather Cirrus Theater Group Seating with U-dinette and 32" LCD TV*
- Booth Dinette with Forward-facing Seatbelts
- Combination Desk/Dinette Table with Two Fixed and Two Folding Chairs

- Round Hardwood Dinette Table with Two Fixed and Two Folding Chairs and Larger Dinette Window*
- Storage Shelves Recessed into Rear Cap of Rear Wardrobe Floorplans
- Luxurious Pillowtop Mattress
- Queen Bed*

ELECTRICAL FEATURES

- Solar Prep
- 7.5 kW Onan® Diesel Quiet Series Generator
- Recessed Docking Lights
- Pre-wired for Freezer

EXTERIOR FEATURES

- Large Chrome Exterior Mirrors
- Large Storage Tray with Access from One Side or Either Side

INTERIOR FEATURES

- Simulated Ceramic Tile Floor in Kitchen, Bathroom and Driver/Passenger Area
- Simulated Plank Floor in Kitchen, Bathroom and Driver/Passenger Area
- Power-activated Sun Visors

PLUMBING & BATH FEATURES

- Assist Handle in Bathtub/Shower
- Fold-down Shower Seat*
- 110 Volt Heat Pads for Holding Tanks
- Water Filter for Entire Unit

CONSTRUCTION FEATURES

- One-piece Molded Fiberglass Roof with 9 mm Decking
- Power Lock Arms on All Slideout Rooms

WINDOWS, AWNINGS & VENTS

- A&E® 9000 Bedroom and Slideout Window Awnings
- A&E® Oasis Manual Front Entrance Door Awning
- A&E® Oasis Power Front Entrance Door Awning
- A&E® Weather Pro Side Awning

*CHECK WITH DEALERSHIP ON FLOORPLAN AVAILABILITY

FLOORPLAN SPECIFICATIONS

FLOORPLAN	APP. OVERALL LENGTH ¹	WIDTH	APP. OVERALL HEIGHT	INTERIOR WIDTH	INTERIOR HEIGHT	GREY	SEWAGE	WATER	PROPANE	FURNACE	WATER HEATER
KSDP 3621	36' 7"	101.5"	12' 5"	95.5"	84"	65 gal.	45 gal.	105 gal.	32 gal.	42,000 Btu	10 gal.
KSDP 3622	36' 7"	101.5"	12' 5"	95.5"	84"	65 gal.	45 gal.	105 gal.	32 gal.	42,000 Btu	10 gal.
KSDP 3623	36' 7"	101.5"	12' 5"	95.5"	84"	65 gal.	45 gal.	105 gal.	32 gal.	42,000 Btu	10 gal.
KSDP 3624	36' 7"	101.5"	12' 5"	95.5"	84"	65 gal.	45 gal.	105 gal.	32 gal.	42,000 Btu	10 gal.
KSDP 3910	39' 2"	101.5"	12' 5"	95.5"	84"	65 gal.	45 gal.	105 gal.	32 gal.	42,000 Btu	10 gal.
KSDP 3912	39' 2"	101.5"	12' 5"	95.5"	84"	65 gal.	45 gal.	105 gal.	32 gal.	42,000 Btu	10 gal.
KSDP 3914	39' 2"	101.5"	12' 5"	95.5"	84"	65 gal.	45 gal.	105 gal.	32 gal.	42,000 Btu	10 gal.
KSDP 3915	39' 2"	101.5"	12' 5"	95.5"	84"	65 gal.	45 gal.	105 gal.	32 gal.	42,000 Btu	10 gal.
KSDP 3916	39' 2"	101.5"	12' 5"	95.5"	84"	65 gal.	45 gal.	105 gal.	32 gal.	42,000 Btu	10 gal.
KSDP 3917	39' 2"	101.5"	12' 5"	95.5"	84"	65 gal.	45 gal.	105 gal.	32 gal.	42,000 Btu	10 gal.

SPARTAN® CHASSIS INFORMATION

FLOORPLAN	ENGINE HP	AXLE RATIO	FUEL CAP.	WHEELBASE	FRONT GAWR ²	REAR GAWR ²	GVWR ²	GCWR ²	APP. UVW	APP. NCC
KSDP 3621	350	4.88	100 gal.	228"	12,000 lb.	20,000 lb.	32,000 lb.	42,000 lb.	24,654 lb.	7,346 lb.
KSDP 3622	350	4.88	100 gal.	228"	12,000 lb.	20,000 lb.	32,000 lb.	42,000 lb.	24,756 lb.	7,244 lb.
KSDP 3623	350	4.88	100 gal.	228"	12,000 lb.	20,000 lb.	32,000 lb.	42,000 lb.	24,504 lb.	7,496 lb.
KSDP 3624	350	4.88	100 gal.	228"	12,000 lb.	20,000 lb.	32,000 lb.	42,000 lb.	24,404 lb.	7,596 lb.
KSDP 3910	350 or 400	4.88	100 gal.	258"	12,000 lb.	20,000 lb.	32,000 lb.	42,000 lb.	26,343 lb.	5,657 lb.
KSDP 3912	350 or 400	4.88	100 gal.	258"	12,000 lb.	20,000 lb.	32,000 lb.	42,000 lb.	25,943 lb.	6,057 lb.
KSDP 3614	350 or 400	4.88	100 gal.	258"	12,000 lb.	20,000 lb.	32,000 lb.	42,000 lb.	26,270 lb.	5,730 lb.
KSDP 3915	350 or 400	4.88	100 gal.	258"	12,000 lb.	20,000 lb.	32,000 lb.	42,000 lb.	25,993 lb.	6,007 lb.
KSDP 3916	350 or 400	4.88	100 gal.	258"	12,000 lb.	20,000 lb.	32,000 lb.	42,000 lb.	25,877 lb.	6,123 lb.
KSDP 3917	350 or 400	4.88	100 gal.	258"	12,000 lb.	20,000 lb.	32,000 lb.	42,000 lb.	25,277 lb.	6,723 lb.

SPARTAN® MOUNTAIN MASTER CHASSIS

The Spartan Mountain Master and Mountain Master GT don't just lead the way, they pave the way! Spartan's Mountain Master chassis is America's most popular, most reliable, highest-performing diesel pusher. Experience the power, the superior ride and handling and excellent driving performance in your coach built on a Spartan Mountain Master chassis. The Mountain Master chassis provides excellent resale value and carries a 36-month, 50,000-mile, no-deductible warranty, which includes roadside assistance for the entire warranty period. Sit back and enjoy the ride!



Lengths, heights, widths and dry weights are approximate. Weight will vary based on optional equipment added to the above base weight.

¹ Lengths do not include the rear ladder.

² Specifications are supplied by the chassis manufacturer.

GAWR: Gross Axle Weight Rating is the maximum permissible weight for an axle.

GCWR: Gross Combination Weight Rating is the value specified by the manufacturer of the vehicle as the maximum allowable loaded weight of this motorhome and any towed trailer or towed vehicle.

GVWR: Gross Vehicle Weight Rating is the maximum permissible weight of a fully loaded motorhome.

UVW: Unloaded Vehicle Weight is the weight of this motorhome as built at the factory with full fuel, engine oil and coolants. The UVW does not include cargo, fresh water, LP gas or dealer-installed accessories.

NCC: Net Carrying Capacity is the maximum weight of all occupants, including the driver, personal belongings, food, fresh water, waste water, LP gas, tools, tongue weight of towed vehicle, dealer-installed accessories, etc., that can be carried by the motorhome.

KOUNTRY STAR

2007 || DIESEL MOTORHOME

WHAT'S IN A NAME?

When you buy a Newmar, you get more than an RV. You get the benefit of all we at Newmar believe in:

- Building products worthy of our customers' highest expectations for quality, durability and value
- Blending advanced manufacturing techniques with the time-tested practices of Amish craftsmanship
- Leading the industry with innovations that enhance RV living
- Offering responsive, effective customer service and support
- Being conscientious, loyal and fair in our business dealings
- Treating everyone according to the highest moral and ethical principles

This is what we value—and have valued from the day we opened shop in 1968. This is what the name Newmar has come to mean for so many. And this is what we'll hold on to for as long as we do business.



WHEN YOU KNOW THE DIFFERENCE™

NEWMAR CORPORATION
355 N DELAWARE ST
PO BOX 30
NAPPANEE IN 46550-0030
574-773-7791 FAX 574-773-2895

www.newmarcorp.com

Your Official Newmar Dealer