

X-AIRE

2008 Toy Hauler



No Time
to Waste



We know your type. You have places to go, adventures to find and no time to waste. You want something that caters to your explorations, while providing you with comfort when the toys are put away for the day. From eating to sleeping, sharing stories to turning in for the night, this is the toy hauler for you. So take a good look. We dare you.

We've packed this toy hauler full of our 40 years experience of building top-quality RVs. We know what it takes and now we're hitting your territory with a patent-pending rear-cap design, 12-foot cargo space, fueling station, and top-of-the-line electronics and appliances (all of which come standard). But beyond all that muscle, we've also crammed this fifth wheel full of lush fabrics, carefully selected décors and comfortable resting places. Day or night, active or restful, this is the place for you.



Take a Good Look.
We Dare
You.



38CKTH shown with Galaxy décor and Platinum Gray cabinets.



When it's time to turn in, there's plenty of sleeping space for the entire crew – accommodations for up to 12 on some floorplans! If the bedroom suite is your private retreat, stretch out on the queen-size mattress. Curl up for the night under the quilted bedspread that pleasantly complements the headboard, window coverings and sidewall vinyl.

The bedroom has plenty of places to stow your travel essentials with a SuperStorage™ wardrobe, dresser and under-bed storage. For added safety, store your valuables in the floor safe that is part of the optional convenience package.

After a long day of adventures, rejuvenate under the flowing streams of the X-Aire shower. Take your time and enjoy the spacious, lighted and easy-to-clean shower enclosure with attractive privacy rain glass.





Time to Kick Back

The living space of the X-Aire is designed with your comfort in mind. It's a place that welcomes you after a long day and soothes you as you relive the day's adventures. So when the toys are put away and the dust is brushed off your boots, step inside for relaxation and camaraderie.



The kitchen comes ready for you to serve up simple breakfasts or five-course dinners, and everything in between. The refrigerator, 3-burner cooktop, oven and microwave make mealtime so easy you'll forget you're on the road. Store all your provisions in the dinette's under-seat storage and abundant cabinets. Extra-deep drawers glide effortlessly on metal guides, while the fully adjustable pantry features deep shelves for even more storage.

After a long day of playing, relax into the hide-a-bed sofa or enjoy a game of cards around the dinette booth. Sit back in front of the 26-inch LCD television with Surround Sound System and DVD player. To meet your needs, easily adjust the position and angle of the television with the pullout swivel tray. Listen to your favorite tunes on the AM/FM stereo and CD player as you take a few moments to stretch out and recharge in the loft area.

40CKSH shown with Steel Blue décor and Oak cabinetry.



Go ahead. Take a look at this champion of the ultimate RV experience. It's a well-built luxury toy hauler that is just itching to hit the road with you. Pack up the toys in the X-Aire garage or pick some up along the way. It's a space ready to be filled and built for many purposes – hauling, working, sleeping and playing.

The 12-foot garage gives you ample space for all your quads, bikes, antiques, show dogs, golf carts, or whatever you please. Travel worry-free with the built-in landing strips that provide secure anchors for tying down your valuable cargo. When you

need to roll up your sleeves and get to work, take advantage of the metal drop-down workbench with storage shelves. Get the job done with peace of mind thanks to the thick-ply Thermoplastic Olefin (TPO) black diamond flooring that is petro-chemical and slip resistant, and much tougher than linoleum or painted floors. It helps ensure a safe work area that's a cinch to clean, and allows for easy transformation into a quiet space.

When the playing is done, the garage doubles as a sleeping area with two optional beds. X-Aire gives you the flexibility to use both beds at once, or leave the top in place, while taking advantage of just the bottom one. The lower bunk also serves as two back-to-back couches so you can enjoy the view when the ramp is open or watch television in the back. Pull down the screen to create your own porch area and enjoy the great outdoors, while keeping bugs and debris outside.



Hit the Road Jack

Built for extreme usage, the durable 3,000-pound-capacity ramp door with low ramp angle endures the wear and tear of loading a heavy cargo. The strut dampeners provide a unique, counter-balanced mechanism for near-effortless opening and closing of the ramp. No need to bench-press the ramp or worry about pinching springs. When it's closed, enjoy the fully finished rear end cap that looks like a typical fifth wheel. No springs and the lockable, hidden latches give the cap a polished, clean look. The end cap is a Newmar innovation and a patent is pending. The vibrant graphics blend with the rest of the exterior, creating a unified look from tip to tail.



Newmar Value... in Every X-Aire

Newmar Express Limited Warranty

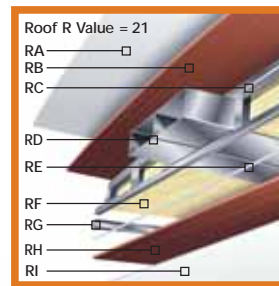
As proof of our commitment to you, we at Newmar back every X-Aire fifth wheel with our industry-leading, one-year Newmar Express Limited Warranty. Ask your dealer for details.

The Limited Five-Year Structural Warranty

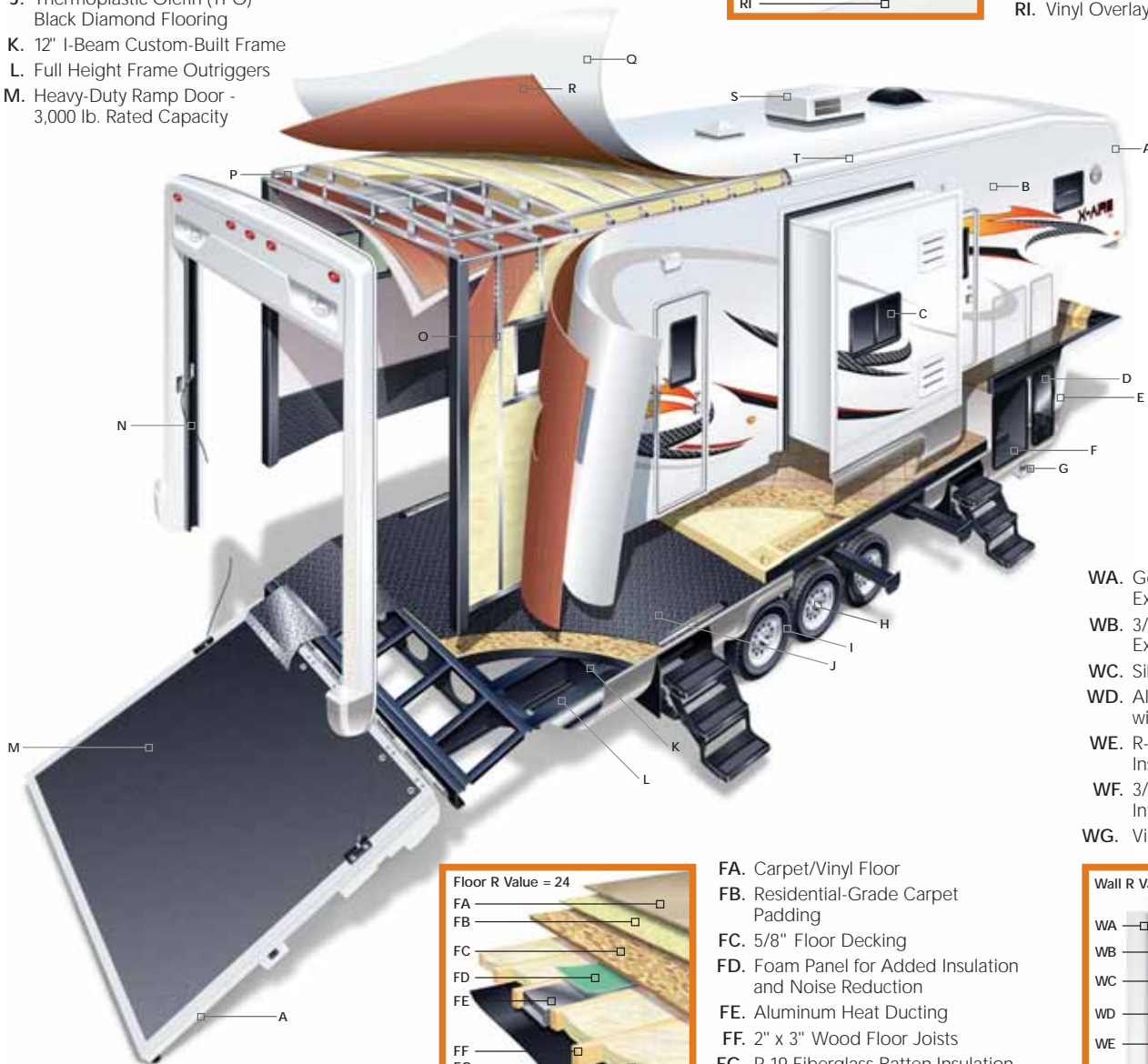
If any part of your Newmar recreational vehicle superstructure (which is the steel/aluminum structure of the sidewall, roof, or frame) fails to perform properly within five years, from the date of purchase, due to faulty workmanship or material supplied by Newmar, it will be repaired without charge for either parts or labor by Newmar. This structural warranty is available only to the original purchaser and is non-transferable.

Your X-Aire fifth wheel reflects Newmar's long history of product innovation and industry "firsts." It's a showcase for Newmar value.

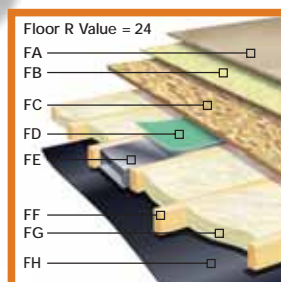
- A. Aerodynamic Gelcoated Fiberglass End Caps
- B. Gelcoated Exterior Sidewall
- C. Dark Tinted Safety Glass
- D. Dual Battery Box (4 with option)
- E. Molded Lower Sidewall Skirting and Gooseneck
- F. Pass-Through SuperStorage™
- G. Power Front Jacks with Manual Override
- H. EZ Lube® Hubs
- I. MOR/ryde® LRE Suspension
- J. Thermoplastic Olefin (TPO) Black Diamond Flooring
- K. 12" I-Beam Custom-Built Frame
- L. Full Height Frame Outriggers
- M. Heavy-Duty Ramp Door - 3,000 lb. Rated Capacity
- N. Recessed Gas Struts for Ramp Door Lift Assist
- O. 16" O.C. Aluminum Sidewall Studding
- P. 16" O.C. Aluminum Roof Rafters
- Q. Walkable Roof Decking
- R. BriteTEK™ Roof
- S. 15,000 BTU Total Comfort™ Ducted Air Conditioning
- T. Radius Aluminum Roof Wraps



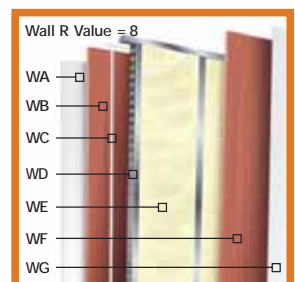
- RA. Strong, Durable BriteTEK™ Roof
- RB. 9mm Plywood Decking
- RC. Aluminum Rafter Framing
- RD. Central Air Conditioning Ducting
- RE. Sikaflex® Adhesive
- RF. R-19 Fiberglass Batten Insulation
- RG. Aluminum Stringer Framing
- RH. 3/16" Plywood Ceiling Panel
- RI. Vinyl Overlay



- WA. Gelcoated Fiberglass Exterior Sidewall
- WB. 3/16" Plywood Exterior Wall
- WC. Sikaflex® Adhesive
- WD. Aluminum Framing with C-Channels
- WE. R-7 Fiberglass Batten Insulation
- WF. 3/16" Plywood Interior Wall
- WG. Vinyl Overlay



- FA. Carpet/Vinyl Floor
- FB. Residential-Grade Carpet Padding
- FC. 5/8" Floor Decking
- FD. Foam Panel for Added Insulation and Noise Reduction
- FE. Aluminum Heat Ducting
- FF. 2" x 3" Wood Floor Joists
- FG. R-19 Fiberglass Batten Insulation
- FH. Continuous Corrugated Plastic Underbelly



Extra Mile Differences...

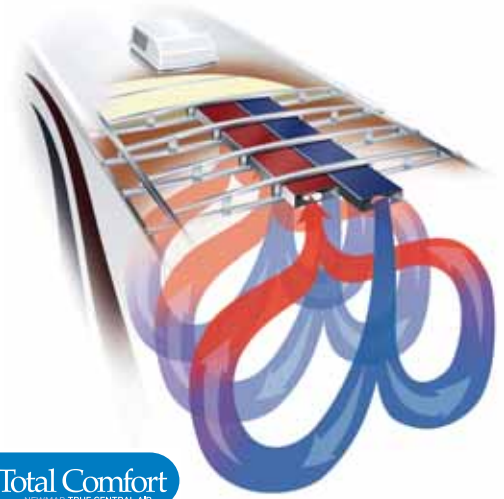
Beauty Within the Beast

What makes Newmar different?

Newmar understands the real world of RV travel and works diligently to design and build quality products that provide comfort and superior performance. Newmar designers take more time and use more materials to get it right. As a vertically integrated manufacturer, Newmar builds much of the recreation vehicle themselves, which means more control over design and quality. Going that extra mile to create a top-quality toy hauler results in a peace of mind unique to Newmar owners. That's the Newmar difference.



Newmar Builds Walls and Roofs residential-style, with studs located 16 inches on-center. Extra C-channel aluminum studs and extra welds may cost more, but they provide a superior wall structure. Stud construction also allows for residential-style wiring and conveniently located switches. Walls and wall studs, ceilings and rafters, are then bonded with a technologically-advanced adhesive, Sikaflex®, that is durable and flexible to absorb and soften the effects of travel.



The Total Comfort® Dual In-Roof Ducting System was engineered by cooling experts especially for Newmar. With multiple strategically placed vents, the system provides true central air conditioning for unparalleled cooling efficiency, balance and whisper-quiet operation.



An Incomparable Superstructure, the X-Aire Chassis is designed and built by Newmar with stronger steel, extra reinforcements and additional welds to make it exceptionally robust. The huge 12-inch steel I-beams provide superior Moment of Inertia (stiffness) and Section Modulus (bending stress) over smaller, thinner I-beams and stacked tube steel. Engineers take advantage of the entire height of the I-beam to attach full 12-inch steel outriggers for extended stability and strength. Many other outriggers are partial height.



The Newmar-Originated Slideout, with its 2x4 steel rails and massive reinforcement, is the strongest, most reliable and most durable on the market. A superior-strength platform results from welding hefty guide rail tubes to both mainframe rails and welding extra reinforcement into the system. Closed-channel frames keep small animals and outside debris from entering the coach.



Newmar-Made Skid Bars are a lot different from the flimsy ones that are more commonly used. Constructed of thick bar steel and reinforced with even more steel, this is the super-duty, real-world version to help protect the RV underbelly from abruptly angled roadway approaches. A Newmar exclusive.



Another Newmar Innovation, the Slideout Cog Wheel, was designed for a fuller engagement of the gears to prevent common gear slippage. The complete slideout system – from the superior strength foundation through the durable high-torque motor mechanism, to the independent operation and the unique self-storing travel-lock arms – is designed to provide years of convenient, smooth, dependable service.

Exterior Color Options



(standard) Silver Metallic



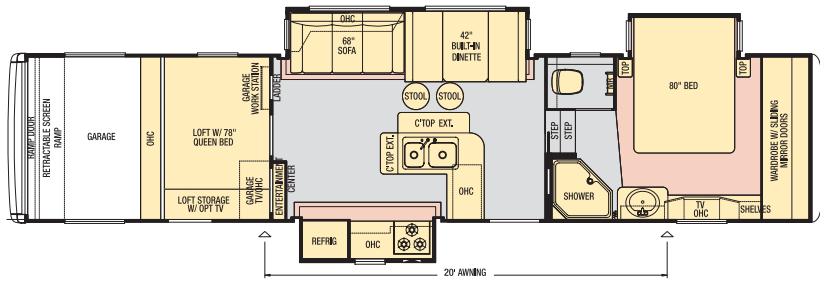
(optional) Galaxy

Built for the Journey

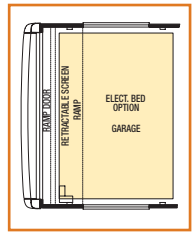
1. X-Aire Rides on 16-Inch, 8-Lug Nut, D-Rated Tires as standard equipment (shown with optional polished aluminum wheels). The triple axles provide a more stable ride and comfortable tow, protecting both the coach and the cargo.
2. The Fueling Station convenience comes standard. It allows you to fill up your toys so the adventure doesn't have to end when the tank hits empty.
3. The Expansive Pass-Through SuperStorage™ Area is heated and lighted. It boasts a handy cargo hook and three-way access. It also provides access to the separate utility compartment and houses the water pump for sound isolation.
4. The Standard Detachable Side Ladder on the X-Aire provides easy access to the strong BriteTEK™ covered walkable rooftop.
5. MOR/ryde™ Pin Box allows you to enjoy a smooth, comfortable towing experience. The optional pin box diminishes the transfer of forces from the fifth wheel to the truck, acting as a cushion to reduce the effect of road shock.
6. The Hot/Cold Exterior Faucet comes with a 15-foot quick-connect coil water hose and sprayer for convenient outside clean-up and water source.
7. Enjoy some tunes on the Exterior AM/FM Radio with CD Player and Remote. From Mozart to Metallica, listen to your favorite songs through the two exterior speakers as well as the two found inside the garage.
8. Take it to the extreme and upgrade to the optional KICKER® Sound System. The 350 watt, 4-channel power amplifier, 6-inch coaxial speakers and 10-inch subwoofer let you rock out to your favorite tunes, while working or playing.



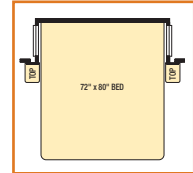
| | |
|--------------------|--------------------|
| Model | XAFW 38CKTH |
| Tire Size | 235/80R16-D |
| GAWR | 5,200 |
| GVWR | 19,000 |
| App. Length | 40' 8" |
| App. Height | 12' 11" |
| Width | 101" |
| App. Dry Weight | 14,500 |
| App. Hitch Weight | 3,600 |
| Fresh Water (gal.) | 105 |
| Grey (gal.) | 84 |
| Sewage Cap. (gal.) | 42 |
| App. Hitch Height | 47" |
| Heat Cap. (BTU) | 35,000 |



Vinyl Floor Carpet

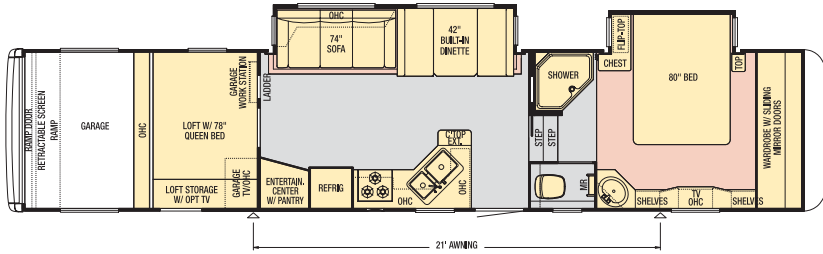


Garage Bed option available on all models.

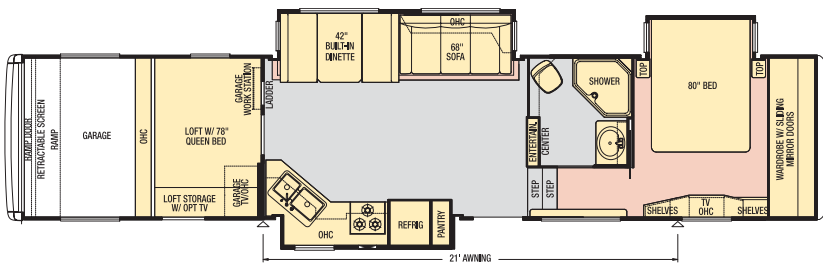


King-Size Bed only available on 40CKFB.

| | |
|--------------------|--------------------|
| Model | XAFW 40CKFB |
| Tire Size | 235/80R16-D |
| GAWR | 5,200 |
| GVWR | 19,000 |
| App. Length | 42' 1" |
| App. Height | 12' 11" |
| Width | 101" |
| App. Dry Weight | 14,480 |
| App. Hitch Weight | 3,330 |
| Fresh Water (gal.) | 105 |
| Grey (gal.) | 84 |
| Sewage Cap. (gal.) | 42 |
| App. Hitch Height | 47" |
| Heat Cap. (BTU) | 35,000 |



| | |
|--------------------|--------------------|
| Model | XAFW 40CKSH |
| Tire Size | 235/80R16-D |
| GAWR | 5,200 |
| GVWR | 19,000 |
| App. Length | 42' |
| App. Height | 12' 11" |
| Width | 101" |
| App. Dry Weight | 14,750 |
| App. Hitch Weight | 3,540 |
| Fresh Water (gal.) | 105 |
| Grey (gal.) | 84 |
| Sewage Cap. (gal.) | 42 |
| App. Hitch Height | 47" |
| Heat Cap. (BTU) | 35,000 |



Interior Options Color

Vinyl Flooring

Vinyl Flooring

Hardware

Countertop

Countertop

Countertop

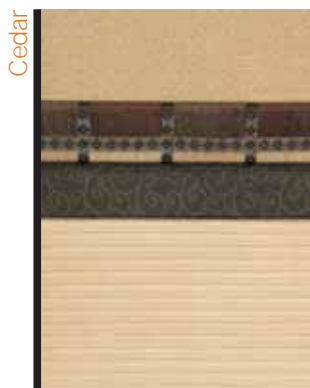
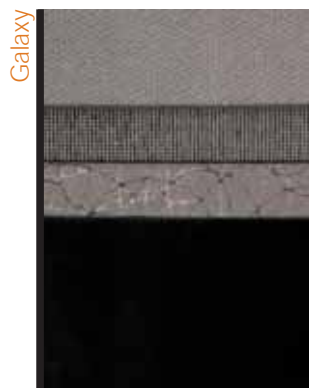
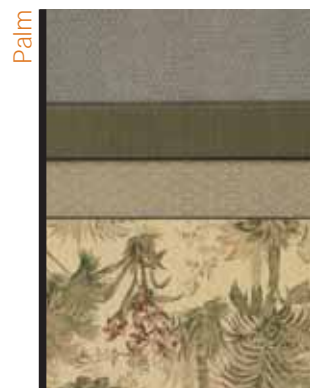
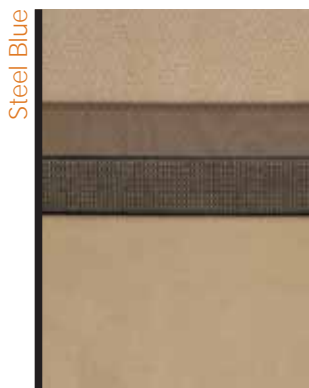
(Standard) Oak

Simulated Plank Flooring

Fall Spice

Simulated Plank Flooring

Platinum Gray



2008 X-AIRE Toy Hauler

Optional Features

Air Conditioning and Heating

15M Penguin Central Air Conditioner with Heat Pump
Extra 13.5M Penguin Central Air Conditioner in Bedroom
Wire and Brace for Second Air Conditioner

Appliances and Accessories

Icemaker Added to Refrigerator*
Norcold® 10 cu. ft. Refrigerator
30" Convection Microwave and Three-Burner Cooktop
Central Vacuum with Floor Port and Deluxe Tool Kit
20" LCD TV in Bunk/Loft Area
20" LCD TV in Garage
KICKER® Sound System
Convenience Package:
Floor Safe, Hair Dryer, Cordless Vac, Pillow-top Mattress and Sofa Pillows

Prep for Ground Tripod Satellite Dish with Phone, TV Jack and Receptacle
Washer/Dryer Prep

Cabinets and Furniture

Fall Spice Cabinetry
Platinum Gray Cabinetry
Freestanding Dinette Table with Two Chairs
Two Fixed Dinette Chairs
Two Folding Dinette Chairs
King Bed with 72" x 80" King Koil™ Mattress
Bunk Beds with Electric Bed Loft in Garage

Electrical Features

5.5 kW Cummins Onan™ Generator with Auto Changeover and Gen Prep (Gen Prep - Includes Energy Command, Fuel Tank with Gauge)
1,200 Watt Inverter with Four 12V Batteries
Solar Prep
Battery Disconnect Switch
Fluorescent Ceiling Lights

Exterior Features

One Exterior Pullout Storage Tray
Entry Porch with Collapsible Handrail at Front Entrance Door
12V Heat Pads for Holding Tanks (N/A on CSA)

Interior Features

Simulated Ceramic Tile in Kitchen, Bath and Living Room
Simulated Plank Floor in Kitchen and Foyer
Staron™ Solid Surface Kitchen and Bath Countertops with Integrated Solid Surface Bowls

Windows, Awnings and Vents

Carefree® Power Side Awning
Create-A-Breeze Vent with Automatic Lift in Kitchen and Over Bath Sink
Double-Pane Tinted Safety-Glass Windows
Screen for Rear Cargo Door

Chassis Features

MOR/ryde® Rubber Pin Box
Electric Over Hydraulic Disc Brakes
Rear 12V Power Twin Stabilizer Jacks

Standard Features

Air Conditioning and Heating

15M Brisk Air Central Air Conditioner with Cold Air Ducted into Garage
Two 30 lb. Propane Gas Bottles with Auto Regulator
35,000 BTU Furnace with In-Floor Ducted Heat
Propane Leak Detector

Appliances and Accessories

12 Gal. Gas/Electric Water Heater with Direct-Spark Ignition
Microwave
Three-Burner Cooktop with Oven and Piezo Ignition
Metal Bi-Fold Range Cover
Range Hood with Light and Fan
Corian™ Knife Block behind Range
26" LCD TV on Pullout Tray in Living Room Entertainment Center
Surround Sound System with AM/FM Radio, DVD, CD and Sub Woofer
20" LCD TV in Bedroom

Norcold® 8 cu. ft. Refrigerator
Cable TV Connection with RG-6 Coax
TV Antenna with Power Booster and Two Interior Jacks
Living Room Ceiling Fan
Hardwood Raised-Panel Refrigerator Front
Magazine Rack in Water Closet
Roof-Mounted Satellite Dish Prep
Exterior AM/FM/CD Radio with Two Outside and Two Garage Speakers
Fire Extinguisher, Smoke Detector and Carbon Monoxide Detector

Cabinets and Furniture

Oak Cabinetry with Hardwood Raised-Panel Cathedral Overhead Cabinet Doors
Built-In Booth Dinette
Hide-A-Bed Sofa*
Recliner/Sofa*
Two Bar Stools*
Shoe Storage Shelves in Front Wardrobe
Metal Drawer Guides
Laminate Countertop in Kitchen with Acrylic Sinks
Laminate Countertop in Bathroom with Acrylic Sink
One Teflon® Sink Cover
Kitchen Countertop Extension*
Pullout Pantry with Fixed Shelves*
Molded Silverware Divider Tray
Metal Storage Cabinet with Paper Towel Holder in Garage
Queen Bed
Lifts on Bed Top to Access Storage Area

Your Official X-Aire Dealer:

Electrical Features

110V Exterior Receptacle
12V Lighting Throughout (Except Dinette)
Incandescent Lighting in Garage
Wall Reading Lights in Living Area Slideouts
50 Amp Electrical Service with Detachable Cord
75 Amp Converter
Dual Battery Box Compartment
Three Exterior Security Lights
Extra Exterior TV Jack
Manually Operated Hold-To-Run Slideout Switch

Exterior Features

Burnt Orange Graphics with Painted Skirt
30" Radius Main Entry Door and 26" Door at Garage
Triple Step at Main Entrance Door
BriteTEK™ Roof with Walkable Decking and Radius Aluminum Roof Wrap
Cargo Hook in Exterior Storage Area
Extendable Grab Handle at Main Entrance Door with Small Grab Handle at Garage Door
Fueling Station in Garage
Gelcoated Exterior Sidewalls
Gelcoated Fiberglass Front End Cap and Rear Cargo Door
Side Ladder

Interior Features

Velux Ceiling Panels
Deluxe Carpeting with High-Density Padding in Living Room and Bedroom
Vinyl Floor in Kitchen, Living Room and Bathroom with Woodgrain Laminate Steps
Day/Night Pleated Window Shades with Jabots in Living Room and Bedroom
Valances in Garage
Mini Blinds in Kitchen and Bathroom
Decorative Wall Border
Interior Assist Handle at Main Entry Door
Kitchen Wastebasket
Flat-Panel Interior Passage Doors
Quilted Bedspread with Shams
Quilted Fabric Headboard

Plumbing and Bath Features

Demand Water System with SHURflo® Pump
Bath Accessories:
Toilet Paper Holder and Towel Bar
Shower with Glass Door
Adjustable-Height Shower Head
High-Rise Kitchen Faucet with Pullout Sprayer
Medicine Cabinet with Deluxe Lighting
Monitor Panel
Sewage Holding Tank Rinse
Sewage Hose Storage Tray

Plumbing and Bath Features (cont.)

Hot/Cold Exterior Faucet with 15' Coil Hose and Sprayer
Thetford™ Aqua Magic II Toilet with Sprayer Attachment
In-Line Water Filter for Entire Unit
Water Heater By-pass

Construction Features

12" I-Beam Custom-Built Frame
5/8" Structurwood® Floor Decking
Aluminum Framed Sidewalls, Roof, Front and Rear on 16" Centers
Enclosed Underbelly with Sheets of Industrial Strength Black Plastic, Ducted Heat and Insulated
PolarPak R-19™ Insulation in Roof, Floor, and Front End Cap
Extended Pin Box
Composite R-Values:
Roof: R-21 Floor: R-24 Sidewall: R-8

Windows, Awnings and Vents

Create-A-Breeze Vent with Auto Lift in Bathroom and Loft Area
Carefree® Fiesta LTD Armored Side Awning
Dark Tinted Safety-Glass Windows
Skylight in Bathroom*
Ram Air Vent System in Garage
Window above Main Slideout Room

Chassis Features

Shock Absorbers
16" Tires and Spare Tire
MOR/ryde® LRE Suspension with EZ Lube® Axles
Polished Aluminum Wheels
Power Front Jacks
Quick-Release H/D Pin for Front Jack Legs
Rear Stabilizer Jacks (1 Pair)

*Check with Dealership on Floorplan Availability



NEWMAR

WHEN YOU KNOW THE DIFFERENCE™

NEWMAR CORPORATION
355 N DELAWARE ST
PO BOX 30
NAPPANEE IN 46550-0030
574-773-7791 Fax 574-773-2895
www.newmarcorp.com

Some features in our literature are optional. Colors and finishes are photographic representations. The actual materials may look different. Prices, specifications and floorplans are subject to change at Newmar's discretion, without prior notice or obligation. Please see your dealer for actual samples and specifications.
©2007 Newmar Corporation. Litho in USA. NEW21372 6/07-20M