



WHEN YOU KNOW THE DIFFERENCE™

09

# DUTCH AIRE



# INSTANT CELEBRITY

There's a rising star in the luxury coach world. Newmar is proud to introduce the brand new 2009 Dutch Aire, a coach that's destined to win the world over. Go ahead, take the keys. The show is about to begin.







NEXT HOUSEHOLD NAME



Word will spread about Dutch Aire's beauty and talent. Its phenomenal living area was designed with a contemporary aesthetic that ensconces floor to ceiling. Take special note of the Flexsteel® furniture, polished porcelain flooring, angular light fixtures and hardwood-accented window treatments.

Your space transforms into a personal movie theatre with the optional pre-programmed universal remote control. The entertainment system features a Samsung® LCD TV with a DVD player and Surround Sound system.



PAINT IT BRILLIANT



Subtle touches help make your new coach extraordinary. The Full-Paint Masterpiece™ Finish with durable Super Clear Coat illuminates Dutch Aire's dashing front and rear caps. As your eyes wander, notice the unique new headlights and chrome mirrors with optional sideview cameras.

Taking center stage is the Spartan® Mountain Master chassis. It gives your coach its unbelievable strength and allows for incredible storage space and larger, stronger Michelin® tires.



Your advanced kitchen boils, bakes, sears and sautées fluently. Included are intelligent, stainless appliances, such as a 30" convection oven and four-door refrigerator with icemaker. Simply perfect for bringing your culinary visions to life.

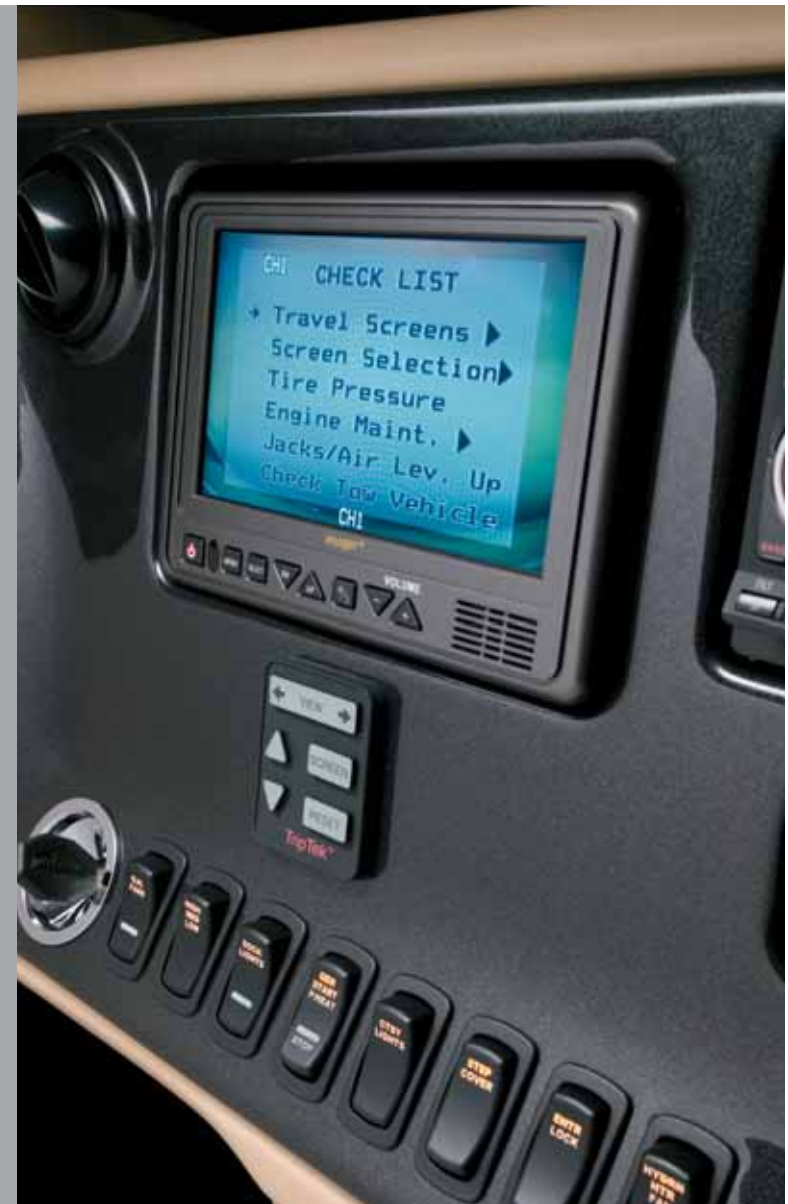
Entertaining is about the presentation. So you'll appreciate the stunning, spacious handcrafted hardwood cabinets and the intricately tiled backsplash. For those who prefer sleeker cabinets, a contemporary flat-panel door option is also available. A designer faucet and Mystera® countertop tie it all together.



MODERN  
IN EVERY SENSE  
OF THE WORD



# STEAL THE SPOTLIGHT



You're about to deliver a powerful performance. Can you handle the Cummins® ISL 425 Hp engine? It sings with just a turn of the ignition. Dutch Aire handles like a dream, thanks to revolutionary Comfort Drive™ Steering. It's an exclusive Newmar innovation that returns the wheel to the center and makes turning and

backing up virtually effortless. The driver command center puts everything at your fingertips, including chassis information, a rearview color monitor system and an optional removable TomTom® navigation system that can be used in other vehicles.



Dutch Aire's bedroom is unbelievably soothing. Feel the Ultrasuede headboard and luxurious accent pillows that offset your King-Sized Bed. Exquisite, aren't they? Imagine how well you'll sleep on the optional Comfortaire mattress. It uses air technology to let you and your partner adjust the firmness to your individual preference.

Turn on your Samsung® 26" LCD TV. See how clear the picture is? Now all you need to decide is whether to drench your room in light or to close the day/night window shades for privacy. This is your time.



LIGHT YEARS  
FROM AVERAGE

# DÉCOR & EXTERIORS

Dutch Aire's four hardwood cabinet options pair well with any of the color combinations below. Choose from either the standard raised-panel or optional Euro-style cabinet doors.



GRANITE



RUSSET

Carmel Glazed Cherry



Euro Style



Raised Panel

Coastal Cherry



Euro Style



Raised Panel

Mondavi Maple



Euro Style



Raised Panel

Windsor Beech



Euro Style



Raised Panel



SAHARA



SEA MIST

# 2009 DUTCH AIRE FEATURES

## STANDARD FEATURES

### CHASSIS FEATURES

Spartan® Mountain Master GT Chassis with IFS  
Cummins® ISL 425 Hp  
Two-Stage Engine Compression Brake  
Adjustable Pedals  
Tag Axle (43' Floorplans)  
Coated Aluminum Wheels  
Hydraulic Leveling Jacks with Single Touch Control  
Comfort Drive™ Steering with Adjustable Control  
Manual Tilt and Telescopic Steering Column  
Cruise Control  
Recessed Fuel Fills with Crossover to Fill from Either Side  
Back-Up Alarm  
Anti-Lock Braking System  
Electronic Chassis Information Display in Dash

### AIR CONDITIONING AND HEATING

Two 13.5M Penguin™ Heat Pump Central Air Conditioners  
(40' Floorplans)  
Two 15M Penguin™ Heat Pump Central Air Conditioners  
(43' Floorplans)  
Hydronic Zone Propane Heating System  
Dash Heater and High-Output Air Conditioner  
Propane Leak Detector  
Wall-Mounted Sensors for Heating and Air Conditioning

### APPLIANCES AND ACCESSORIES

30" Convection Microwave Oven  
Two-Burner Cooktop with Piezo Ignition  
Polished Mystera® Range Cover  
Dometic® 9 Cu.Ft. Refrigerator with Icemaker  
Brushed Stainless Steel Refrigerator Front  
Washer/Dryer Prep  
Samsung® 32" LCD TV in Living Area\* (40" LCD TV on  
Certain Floorplans)  
Samsung® 26" LCD TV in Bedroom  
AM/FM Dash Radio with MP3 Adapter and CD Player  
Rearview Color Monitor System  
Surround Sound Home Theater System with Single-Disc  
DVD Player  
TV Antenna with Power Booster with Two Interior Jacks  
"TV Antenna Is Up" Warning Signal  
Satellite Prep—Phone, TV Jack and Receptacle  
Audio/Video Switch System with Remote  
Telephone Connection with Phone Jacks in Living and Dash Area  
Cable TV Connection with Rg6 Coax

High Definition Component Wiring and HD-ready Video  
Switching System  
Two Bedroom Radio Speakers with On/Off Switch  
DVD Player in Bedroom  
Roof-Mounted Air Horns  
10 Bc Fire Extinguisher, and Carbon Monoxide and  
Smoke Detectors

### CABINETS AND FURNITURE

Windsor Beech Hardwood Cabinets with Raised-Panel,  
Double-Arched Cabinet Doors  
Hidden-Leaf Dinette Table with Four Chairs (Two Fixed,  
Two Folding)\*  
Polished Mystera® Countertop in Kitchen with Undermounted  
Sink and Flush Sink Covers  
Polished Mystera® Countertop in Bathroom with  
Integrated Sink  
Pullout Mobile Island Kitchen Base Cabinet with Polished  
Mystera® Countertop\*  
Knife Hinges on Cabinet Doors  
Flexsteel® Furniture  
Pullout Pantry Shelves\*  
Residential Style Full Extension Ball Bearing Drawer Guides  
Ultraeather Driver/Passenger Seats with Six-Way Power and  
Power Lumbar, with Footrest on Passenger Seat  
Adjustable-Height Shoulder Seat Belts  
Lifts on Bed Top to Access Storage Area  
Pullout Step-stool with Storage in Bathroom Cabinet  
Storage Shelves Recessed into Rear Cap of Rear Wardrobe  
Floorplans  
Luxurious Pillowtop Mattress with Quilted Bedspread and  
Accent Pillows  
King Bed\*

### ELECTRICAL FEATURES

8.0 kW Cummins Onan® Quiet Series Diesel Generator on  
Slideout Tray  
50-Amp Electrical Service with Flexible Cord  
Four 6-Volt House Batteries on Pullout Tray  
Battery Disconnect Switch  
110-Volt Exterior Receptacle  
5-Watt Solar Panel  
2,000-Watt Inverter  
Emergency Start Switch  
Exterior Security Light on Each Side  
Midship Side Turn Signals  
Recessed Docking Lights  
Switched Receptacle for Engine Block Heater  
Fluorescent Lights in Ceiling and Overhead Cabinets

Lighted Wardrobes  
Slideout Information Voice Module  
Manually Operated Hold-to-Run Slideout Switch  
ICC Light Flasher Switch  
Two 12-Volt Auxiliary Receptacles on Dashboard  
Exterior TV Jack  
Interior Courtesy Lights  
Map Lights

### EXTERIOR FEATURES

Full-Paint Masterpiece™ Finish with Front Protective Film  
One-Piece Bonded Windshield  
Large Chrome Convex Exterior Mirrors with Remote Control  
and Defrost  
Entrance Door with Automatic Double Step  
Power Flush Stepwell Cover  
Lighted Exterior Storage Compartments with Cargo Liner,  
Controlled by Interior Master Switch  
10,000 lb. Towing Hitch with Two Extra 14-Gauge Wires  
Lighted Acrylic Assist Handle at Entrance Door  
Rear Protective Full-Width Tow Guard  
Rear Ladder  
Undercoating  
Mud Flaps

### INTERIOR FEATURES

Padded Vinyl Ceiling  
Duo Day/Night Window Shade System (Windshield and  
Driver/Passenger Side Windows)  
Day/Night Pleated Window Shades and Lambrequins  
Mini Blinds in Kitchen and Bathroom  
Hardwood Fascia on Living Area Slideouts  
Polished Porcelain Floor Tile in Kitchen, Bathroom and  
Living Area  
Polished Mystera® Routed Backsplash with Tile Inserts  
in Kitchen  
Raised-Panel Interior Passage Doors  
Deluxe Carpeting with High-Density Padding in Living Room  
and Bedroom  
Interior Assist Handle at Main Entrance Door  
Power-Activated Sun Visors

### PLUMBING AND BATH FEATURES

Demand Water System with SHURflo® Pump  
Sewage Holding-Tank Rinse  
Thetford™ Aqua Magic Plus China Stool with Wood Seat and  
Sprayer (Vacuum Flush on Rear Bath Floorplans)  
Towel Ladder on Hinged Bathroom Door  
Exterior Shower

Fiberglass Tub/Shower with Glass Door  
Monitor Panel  
Water Pump Switches Located in Bathroom, Kitchen and  
Exterior Near Gate Valves  
Water Filter for Entire Unit  
Soap Dispenser at Kitchen Sink

#### CONSTRUCTION FEATURES

Power Lock Arms

#### WINDOWS, AWNINGS AND VENTS

Double-Pane, Tinted Safety-Glass Windows  
Fan-Tastic® Vent with Rain Sensor in Kitchen and  
Bathroom Areas  
Skylight in Bathroom\*  
A & E® 9000 Bedroom and Slideout Window Awnings  
A & E® Oasis Power Front Entrance Door Awning  
A & E® Weather Pro Power Side Awning  
A & E® Slideout Awning Covers  
Cockpit Overhead Ventilation System

## OPTIONAL FEATURES

#### AIR CONDITIONING AND HEATING

Two 15M Penguin™ Heat Pump Central Air Conditioners  
Extra 15M Penguin™ Heat Pump Central Air Conditioner with  
10.0 kW Onan Generator (43' Floorplans)  
Hydronic Zone Diesel Heating System

#### APPLIANCES AND ACCESSORIES

Dometic® 12 Cu.Ft. Side-by-Side Refrigerator with Icemaker  
Dometic® 12 Cu.Ft. Four-Door Refrigerator with Icemaker and  
Water Dispenser  
Norcold® 12 Cu.Ft. Four-Door Refrigerator with Icemaker and  
Water Dispenser  
Norcold® Freezer on Pullout Tray  
One-Piece Washer/Dryer\*  
Two-Piece Washer/Dryer\*  
Fisher & Paykel DishDrawer®  
Samsung® 23" LCD TV with DVD Player in Living Area  
Overhead Cabinet\*  
Samsung® 32" LCD TV in Front Overhead Cabinet\*  
SIRIUS® Satellite Radio Capability (Does Not Include SIRIUS®  
Monthly Subscription)

Dash Radio/CD Player with Portable TomTom®  
Navigation System and MP3 Adapter  
10-Disc CD Player (N/A with Dash Radio option)  
Pre-Programmed Universal Remote Control  
External Entertainment Center with 26" LCD TV and AM/FM  
Radio and CD Player  
Automatic Satellite without Receiver  
In-Motion Satellite without Receiver  
Entertainment Center with Relocated Living Area TV  
TripTek™ Electronic Travel Information (Displayed on Rearview  
Monitor)  
Garmin® Navigation System  
Sideview Cameras  
CB Radio with Antenna  
CB Antenna  
Central Vacuum with Deluxe Tool Kit

#### CABINETS AND FURNITURE

Coastal Cherry Hardwood Cabinets  
Carmel Glazed Cherry Hardwood Cabinets  
Mondavi Maple Hardwood Cabinets  
Hardwood Euro-Style Cabinet Doors with Concealed Hinges  
Heated Driver/Passenger Seats  
Two Ultraleather Euro Recliners with Ottoman\*  
Ultraleather Swivel Rocker Recliner\*  
Ultraleather Recliner with Ottoman\*  
Ultraleather Free-Standing Recliner\*  
Ultraleather Easy-Bed Sofa\*  
Ultraleather Combination U-Dinette and Sofa\* (Hide-A-Bed  
N/A with this option)  
Ultraleather Hide-A-Bed Sofa with Air Mattress\*  
Booth Dinette with Seatbelts  
Combination Desk/Dinette Table with Two Fixed and Two  
Folding Chairs\*  
Round Hardwood Dinette Table with Two Fixed and Two  
Folding Chairs with Large Dinette Window\*  
Folding Coffee Table  
Comfortaire Air Mattress for Main Bed

#### ELECTRICAL FEATURES

Roof-Mounted Spot Light  
Pre-Wire for Freezer  
Energy Management System  
Power Cord Rewind Reel  
Solar Prep

#### EXTERIOR FEATURES

Large Storage Tray with Access from Either Side  
Small Storage Tray

#### INTERIOR FEATURES

Undermounted Solid Surface Sinks  
Center Entrance Door Layout\*

#### PLUMBING AND BATH FEATURES

Assist Handle in Tub/Shower  
Fold-down Shower Seat  
Corner Bath Tub  
110-Volt Heat Pads for Holding Tanks

#### CONSTRUCTION FEATURES

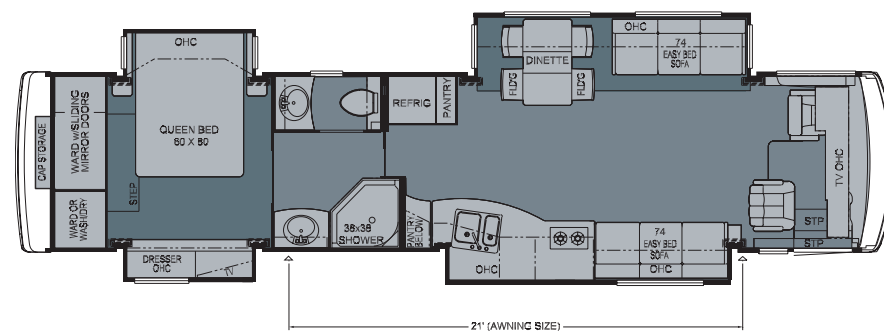
One-Piece Molded Fiberglass Roof with 9mm Decking  
Power Baggage Door Locks

#### WINDOWS, AWNINGS AND VENTS

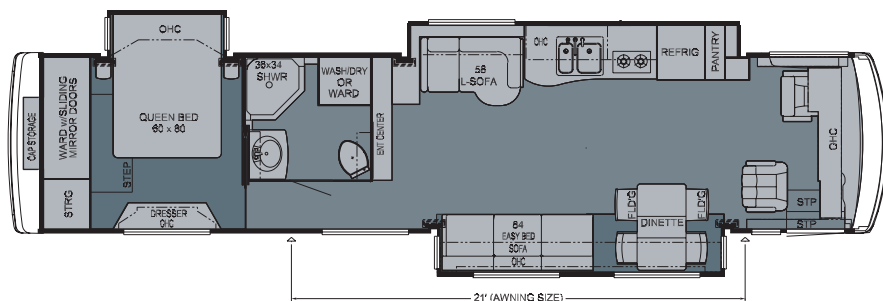
Driver's-Side Power Window  
Keyless Entry with Touch Pad and Doorbell  
Drop-Down Shade on Weather Pro Side Awning

\*CHECK WITH DEALERSHIP ON FLOORPLAN AVAILABILITY

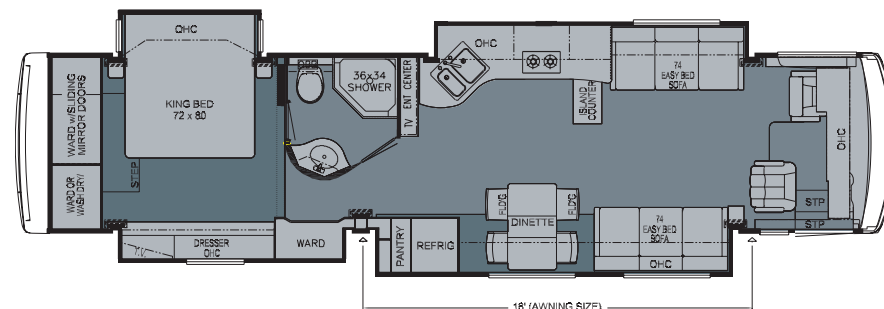
# DUTCH AIRE FLOORPLANS



2009 Dutch Aire Diesel Pusher 4023

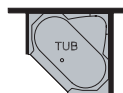


2009 Dutch Aire Diesel Pusher 4055



2009 Dutch Aire Diesel Pusher 4085

P370 Tub ILO  
Shower: DADP  
4023, 4304, 4317



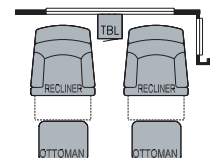
J580 59"  
Entertainment  
Center: DADP  
4317, 4320



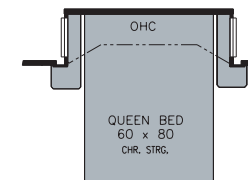
K801 Combination  
U-Dinette & L-Sofa:  
DADP 4023, 4085,  
4304, 4317, 4320

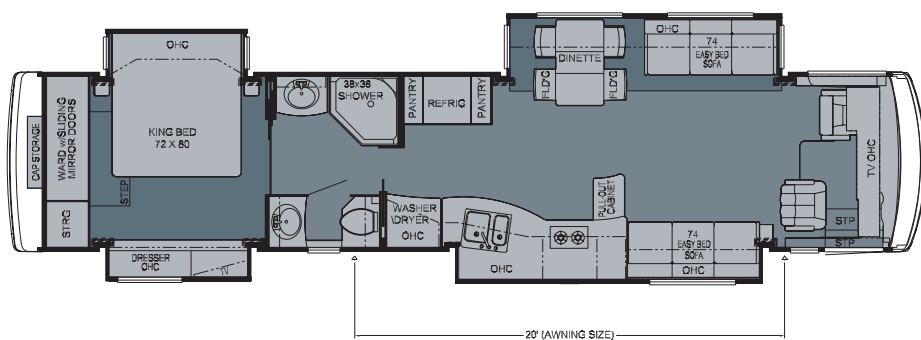


K240 Recliners & Lamp  
Stand ILO 84" Sofa:  
DADP 4320

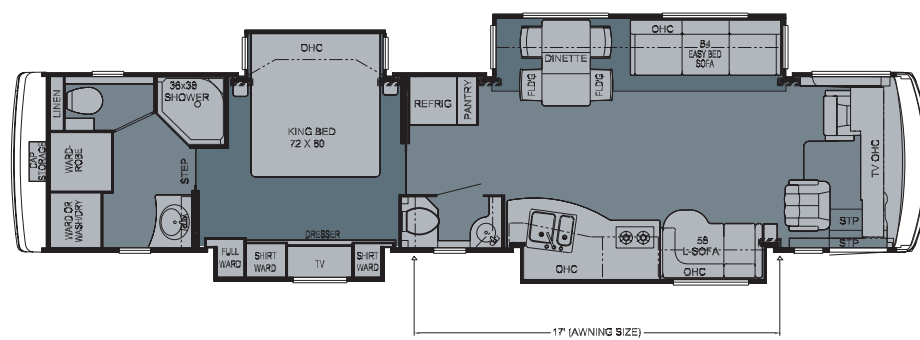


K030 Queen Bed ILO  
King: DADP 4085,  
4317, 4304, 4320

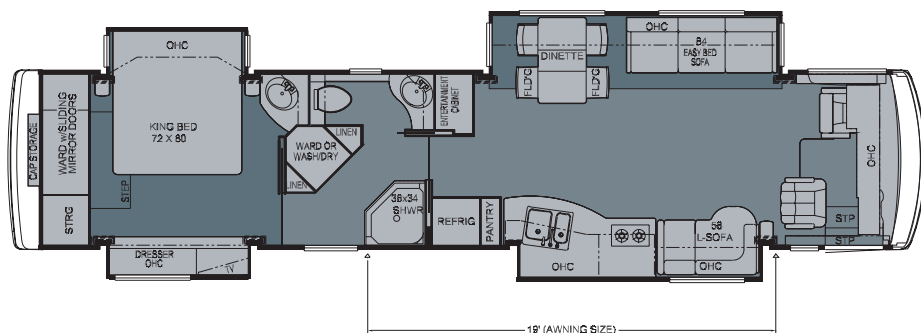




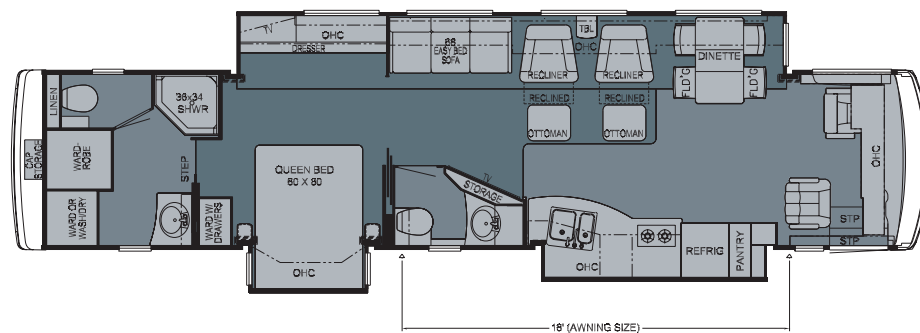
2009 Dutch Aire Diesel Pusher 4304



2009 Dutch Aire Diesel Pusher 4317

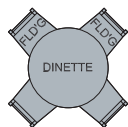


2009 Dutch Aire Diesel Pusher 4320

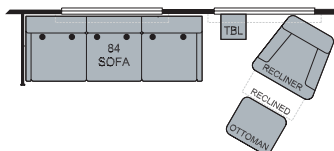


2009 Dutch Aire Diesel Pusher 4331

K541 Round Dinette:  
DADP 4023, 4055,  
4085, 4304, 4317,  
4320, 4331



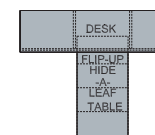
K814 84 Sofa & 1  
Recliner ILO 2:  
DADP 4331



K420/K421 Booth  
Dinette: DADP 4023,  
4055, 4085, 4304,  
4317, 4320, 4331



K124 Combination  
Desk Dinette: DADP  
4023, 4055, 4304,  
4317, 4320, 4331



# DUTCH AIRE CONSTRUCTION



The Spartan® Mountain Master GT doesn't just lead the way, it paves it. Spartan's Mountain Master chassis is America's most popular, most reliable, highest-performing diesel pusher. Experience the power, superior ride, handling and excellent driving performance your coach, built on

a Spartan® Mountain Master chassis, has to offer. The Mountain Master chassis provides excellent resale value and carries a 36-month, 50,000-mile, no-deductible warranty, which includes roadside assistance for the entire warranty period. Sit back and enjoy the ride!



## Newmar Express Limited Warranty

Every Dutch Aire Diesel Pusher is backed by Newmar's one-year limited warranty/unlimited miles. Ask your Newmar dealer for details.

## Limited Five-Year Structural Warranty

If any part of your Newmar recreational vehicle superstructure (which is the steel/aluminum structure of the sidewall, roof or frame) fails to perform properly within five years from the date of purchase because of faulty workmanship or material supplied by Newmar, it will be repaired without charge for either parts or labor by Newmar. This structural warranty is available only to the original purchaser and is non-transferable.



### Roof R-Value = 16

- a. BriteTEK™ Roof
- b. 9mm Wood Decking
- c. Fiberglass Batten Insulation
- d. A/C Ducting
- e. Aluminum Rafter Framing
- f. Kraft Paper Vapor Barrier
- g. 5/8" Bead Foam
- h. 3/16" Panel
- i. Padded Vinyl Overlay

### Sidewall R-Value = 11

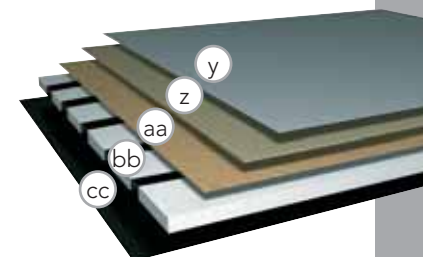
- j. 3/16" Plywood Interior Wall
- k. 5/8" Bead Foam
- l. Kraft Paper Vapor Barrier
- m. Fiberglass Batten Insulation
- n. 3/16" Plywood Exterior Wall
- o. Composite One-Piece Gelcoat Exterior Sidewall
- p. Aluminum Framing with 3 1/2" Header Above

### Floor R-Value = 16

- q. Carpet/Tile
- r. Carpet Padding
- s. 5/8" Floor Decking
- t. Fiberglass Batten Insulation
- u. 2"x 3" Wood Framing
- v. Polyethylene Moisture Barrier
- w. Foam Panels (Noise Protection)
- x. Aluminum Ducting

### Basement R-Value = 4

- y. Cargo Liner
  - z. 3/8" Floor Decking
  - aa. 3/16" Luan Panel
  - bb. 1 1/2" Bead Foam
  - cc. Aluminum Sheeting with Steel Support Rails to Prevent Bowing and Flexing
1. 13.5M or 15M Penguin™ Heat Pump Central Air Conditioners (2)
  2. One-Piece Bonded Windshield
  3. Coated Aluminum Wheels
  4. Double-Pane, Tinted Safety-Glass Windows
  5. Side-Hinged Baggage Doors with Optional Pullout Tray



## FLOORPLAN SPECIFICATIONS

FLOORPLAN	APP. OVERALL LENGTH	WIDTH	APP. OVERALL HEIGHT	INTERIOR WIDTH	INTERIOR HEIGHT	GREY	SEWAGE	WATER	PROPANE	FURNACE
4023	40' 9"	101.5"	12' 6"	95.5"	84"	65 gal.	45 gal.	105 gal.	32 gal.	55,000 Btu
4055	40' 9"	101.5"	12' 6"	95.5"	84"	65 gal.	45 gal.	105 gal.	32 gal.	55,000 Btu
4085	40' 9"	101.5"	12' 6"	95.5"	84"	65 gal.	45 gal.	105 gal.	32 gal.	55,000 Btu
4304	42' 9"	101.5"	12' 9"	95.5"	84"	65 gal.	45 gal.	105 gal.	32 gal.	55,000 Btu
4317	42' 9"	101.5"	12' 9"	95.5"	84"	65 gal.	45 gal.	105 gal.	32 gal.	55,000 Btu
4320	42' 9"	101.5"	12' 9"	95.5"	84"	65 gal.	45 gal.	105 gal.	32 gal.	55,000 Btu
4331	42' 9"	101.5"	12' 9"	95.5"	84"	65 gal.	45 gal.	105 gal.	32 gal.	55,000 Btu

## SPARTAN® CHASSIS

FLOORPLAN	ENGINE HP	AXLE RATIO	FUEL CAP.	WHEEL- BASE	FRONT GAWR*	REAR GAWR*	TAG GAWR*	GVWR*	GCWR*	APP. UVW	APP. NCC
4023	425	4.88	150 gal.	276"	14,600 lb.	20,000 lb.	0 lb.	34,600 lb.	44,600 lb.	29,625 lb.	4,975 lb.
4055	425	4.88	150 gal.	276"	14,600 lb.	20,000 lb.	0 lb.	34,600 lb.	44,600 lb.	28,910 lb.	5,690 lb.
4085	425	4.88	150 gal.	276"	14,600 lb.	20,000 lb.	0 lb.	34,600 lb.	44,600 lb.	29,489 lb.	5,111 lb.
4304	425	4.88	150 gal.	276"+TAG	16,000 lb.	20,000 lb.	10,000 lb.	46,000 lb.	56,000 lb.	32,501 lb.	13,499 lb.
4317	425	4.88	150 gal.	276"+TAG	16,000 lb.	20,000 lb.	10,000 lb.	46,000 lb.	56,000 lb.	32,765 lb.	13,235 lb.
4320	425	4.88	150 gal.	276"+TAG	16,000 lb.	20,000 lb.	10,000 lb.	46,000 lb.	56,000 lb.	32,364 lb.	13,636 lb.
4331	425	4.88	150 gal.	276"+TAG	16,000 lb.	20,000 lb.	10,000 lb.	46,000 lb.	56,000 lb.	33,248 lb.	12,752 lb.

Lengths, heights, widths and dry weights are approximate. Weight will vary based on optional equipment added to the above base weight.

GAWR: Gross Axle Weight Rating is the maximum permissible weight for an axle.

GVWR: Gross Vehicle Weight Rating is the maximum permissible weight for a fully loaded motor coach.

GCWR: Gross Combination Weight Rating is the value specified by the manufacturer of the vehicle as the maximum allowable loaded weight of this motor coach and any towed trailer or towed vehicle.

UVW: Unloaded Vehicle Weight is the weight of this motor coach as built at the factory with full fuel, engine oil and coolants. The UVW does not include cargo, fresh water, propane gas or dealer-installed accessories.

NCC: Net Carrying Capacity is the maximum weight of all occupants, including the driver, personal belongings, food, fresh water, waste water, propane gas, tools, tongue weight of towed vehicle, dealer-installed accessories, etc., that can be carried by the motor coach.

\*Specifications supplied by the chassis manufacturer.



*(Please affix dealer stamp in this area.)*

See more of the stunning new

# 2009 DUTCH AIRE

Visit [www.newmarcorp.com](http://www.newmarcorp.com)

# 009



NEWMAR CORPORATION • 355 N DELAWARE ST • PO BOX 30 • NAPPANEE IN 46550-0030  
574-773-7791 • Fax 574-773-2895 • [www.newmarcorp.com](http://www.newmarcorp.com)