

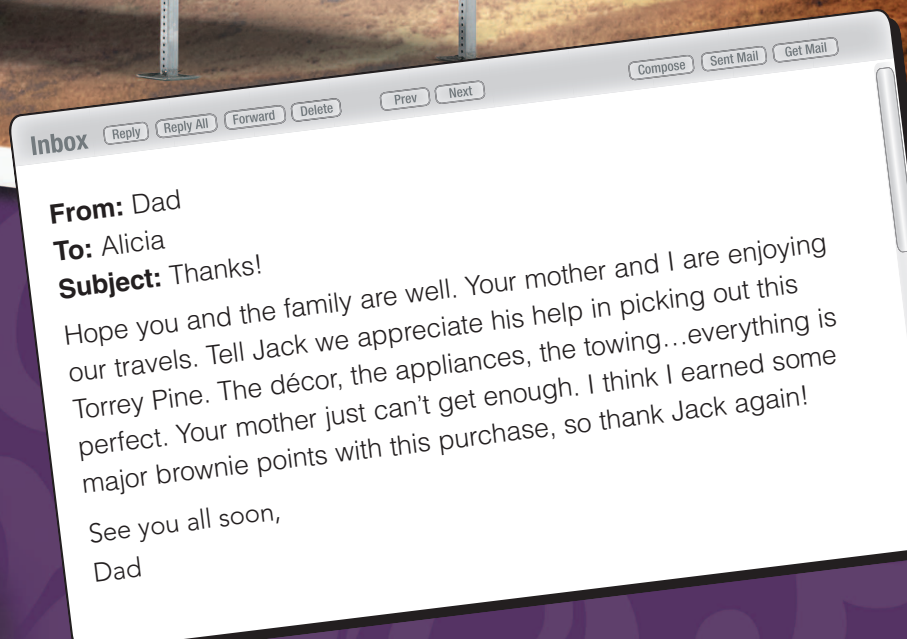
The Enduring

Difference

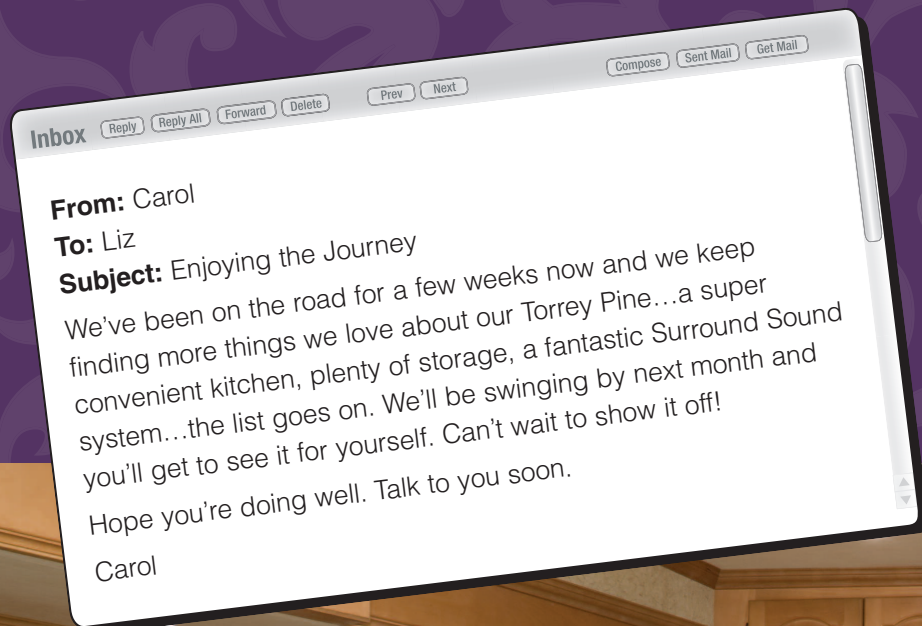
**TORREY  
PINE**

2009 Fifth Wheel

**NEWMAR**







Sit back and relax in front of the entertainment center with high-definition capabilities and enjoy the warm glow of the optional fireplace available with a beautiful Corian® hearth. Glider recliners offer comfort and support, while the hide-a-bed sofa easily converts to accommodate overnight guests—from grandkids to old college friends.

38LSHS shown with Portafino décor and Windsor Beech hardwood cabinetry.



The kids, enjoying the great outdoors instead of their video game controllers. (!)



Enjoy coffee, cuisine and cards at the freestanding dinette table with convenient extensions for extra room. The chairs offer handy in-seat storage for all those miscellaneous necessities.





# Travel *in Luxury*



The Torrey Pine galley comes complete with the latest in RV kitchen technology and conveniences. You'll love the high-efficiency Norcold® refrigerator that blends with the woodwork, and the pantry with sliding shelves keeps all of your dry goods right at your fingertips while ensuring they're secure for travel.

The rich Windsor Beech hardwood cabinets are vented, allowing circulation to keep the air in your food storage areas fresh. The extra-deep drawers glide effortlessly on ball-bearing guides and provide ample storage space.



## EMD

### *Extra Mile Differences*

Newmar does things differently.

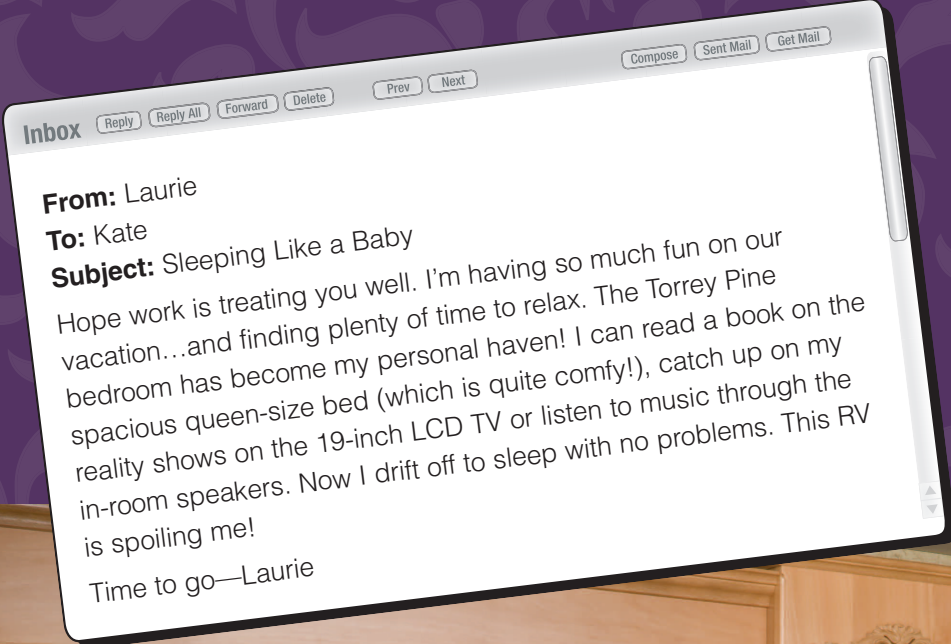
*Extra Mile Differences* are found throughout Newmar RVs – in places you see and in places that are not so obvious. Look for the **EMD** emblem to learn about those features that show how Newmar goes above and beyond to provide a stronger, more durable, superior product.

Another Newmar Innovation, the Slideout Cog Wheel, was designed for a fuller engagement of the gears to prevent common gear slippage. The complete slideout system – from the superior-strength foundation through

the durable high-torque motor mechanism, to the independent operation and the unique self-storing travel-lock arms – is designed to provide years of convenient, smooth, dependable service.







38LSHS shown with Portafino décor and Windsor Beech hardwood cabinetry.



The vanity with lighted mirror and radius countertop edge add beauty and functionality. Find a handy step stool tucked beneath the sink, perfect for reaching high places or giving little hands better access to the sink. Lift the top and store more items within the drawer.



# Relax *in Style*

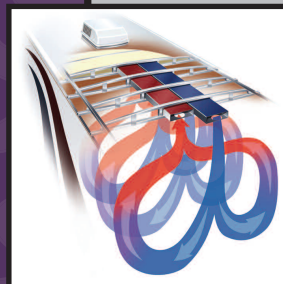
Unwind in the beautifully decorated bedroom suite that features hardwood fascias, fabric headboard and decorative glass door accents. The carefully selected fabrics offer a soothing and relaxing environment, from the window coverings to the luxurious, quilted bedspread. Find complete rest on the queen-sized bed that comforts you after a long day of travels.

Load up the Torrey Pine with clothes and travel necessities thanks to the cedar-lined closet, hardwood bureau and under-bed storage.



## EMD

*Extra Mile Differences*



**The Total Comfort® Dual In-Roof Ducting System** was engineered by cooling experts especially for Newmar. With multiple strategically placed vents, the system provides true central air conditioning for unparalleled cooling efficiency, balance and whisper-quiet operation.



Our self-portrait in paradise!

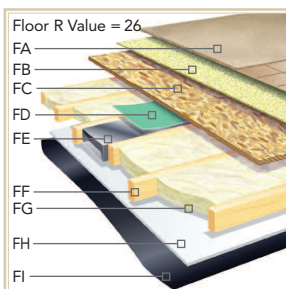
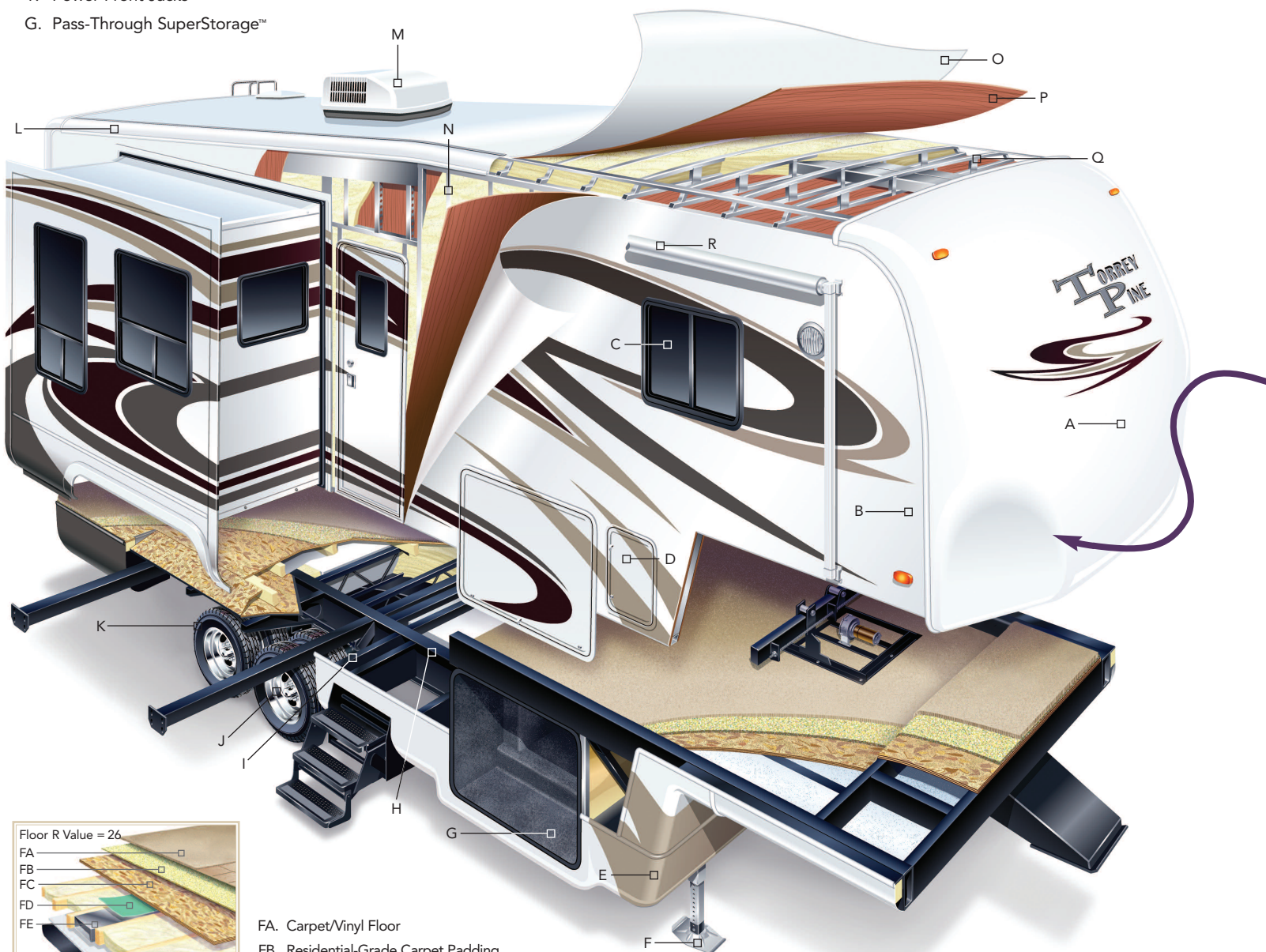




*in absolute quality*

Your Torrey Pine fifth wheel reflects Newmar's long history of product innovation and industry "firsts." You can depend on the exacting standards and meticulous care by which this fifth wheel is built. It's a showcase for Newmar value.

- A. Aerodynamic Gelcoated Fiberglass End Caps
- B. Gelcoated Exterior Sidewall
- C. Dark Tinted Safety Glass
- D. Dual Battery Box
- E. Molded Lower Sidewall Skirting and Gooseneck
- F. Power Front Jacks
- G. Pass-Through SuperStorage™
- H. 12" I-Beam Custom Built Frame
- I. Full-Height Frame Outriggers
- J. EZ Lube® Hubs
- K. MOR/ryde® RE Suspension
- L. Radius Aluminum Roof Wraps
- M. 15,000 BTU Total Comfort™ Ducted Air Conditioning
- N. 16" O.C. Aluminum Sidewall Studding
- O. BriteTEK™ Roof
- P. Walkable Roof Decking
- Q. 16" O.C. Aluminum Roof Rafters
- R. Side Awning



- FA. Carpet/Vinyl Floor
- FB. Residential-Grade Carpet Padding
- FC. 5/8" Floor Decking
- FD. Foam Panel for Added Insulation and Noise Reduction
- FE. Aluminum Heat Ducting

- FF. 2" x 3" Wood Floor Joists
- FG. R-19 Fiberglass Batten Insulation
- FH. 5/8" Bead Foam Insulation

- FI. Aluminum Underbelly 4' x 8' Sheets



There is much more to Newmar products than what can be seen at first glance, which is one reason the Newmar name is known and trusted among RVers. Take a look at the construction details of Torrey Pine and you will see an RV that is built for outstanding quality and comfort, from the inside out.

#### Newmar Express Limited Warranty

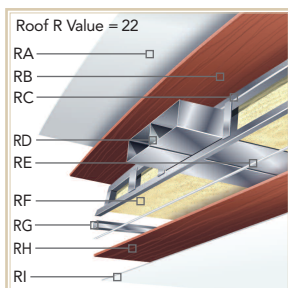
As proof of our commitment to you, we at Newmar back every Torrey Pine fifth wheel with our industry-leading, one-year Newmar Express Limited Warranty. Ask your dealer for details.

#### The Limited Five-Year Structural Warranty

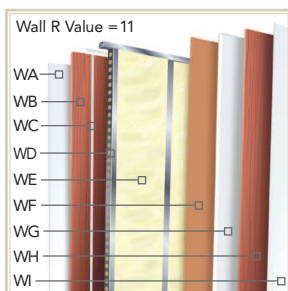
If any part of your Newmar recreational vehicle superstructure (which is the steel/aluminum structure of the sidewall, roof, or frame) fails to perform properly within five years, from the date of purchase, due to faulty workmanship or material supplied by Newmar, it will be repaired without charge for either parts or labor by Newmar. This structural warranty is available only to the original purchaser and is non-transferable.

*The Torrey Pine front cap has been redesigned to provide easy towing with short-bed trucks as well as standard-bed trucks, allowing for a 60-degree turning angle while maintaining its pleasantly streamlined look.*

- RA. Strong, Durable BriteTEK™ Roof
- RB. Walkable Roof Decking
- RC. Aluminum Rafter Framing
- RD. Air Conditioning Ducting
- RE. Sikaflex® Adhesive
- RF. R-19 Fiberglass Batten Insulation
- RG. Aluminum Stringer Framing
- RH. 3/16" Plywood Ceiling Panel
- RI. Padded Vinyl Overlay



- WA. Gelcoated Exterior Sidewall
- WB. 3/16" Plywood Exterior Wall
- WC. Sikaflex® Adhesive
- WD. Aluminum Framing with C-Channels
- WE. R-7 Fiberglass Batten Insulation
- WF. Kraft Paper Vapor Barrier
- WG. 5/8" Bead Foam Insulation
- WH. 3/16" Plywood Wall Panel
- WI. Vinyl Overlay



1



2



3

**1. The Optional Rear Ladder** provides easy access to the strong, walkable rooftop, which is covered in BriteTEK™, a protective membrane that is superior to rubber roofs. BriteTEK™ resists tears and punctures, is simple to clean, and its nonporous surface effortlessly washes away the dirt, grime and acid rain residue which create chalking and black streaks.

**2. Optional MOR/ryde® Pin Box** absorbs jolts between the fifth wheel and the truck and acts as a cushion to significantly reduce the effect of chucking and road shock, providing a smooth and comfortable towing experience.

**3. The Expansive Pass-Through SuperStorage™ Area** is heated and lighted. It boasts two handy cargo hooks and three-way access. Utility components are located in a separate, easily accessible compartment within the SuperStorage™ area, shown with optional pullout storage tray.

# EMD

Extra Mile Differences

#### Newmar Pioneered and has a Patent on the Flat-Floor Slideout.



Sliding a room in and out poses some out-of-the-way engineering and sealing challenges to do it right. Newmar developed an improved slideout wedge roof design that forms a tighter closure when the room is extended. A specially developed double-bulb, superior-memory seal provides protection from outside elements and insects, and sweeps off debris on room retraction.



# Interior Color

*Simulated Plank Flooring*



(Standard)  
*Windsor Beech*

*Simulated Plank Flooring*



(Optional)  
*Ginger Maple Hardwood*

*Simulated Plank Flooring*



(Optional)  
*Ginger Maple Hardwood with Glazed Doors*



*Hardware*



*Countertop*



*Onyx*



*Portafino*



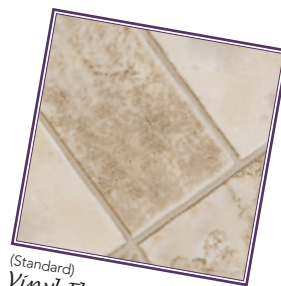
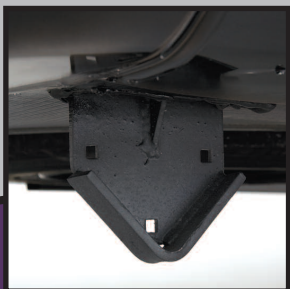
*Linen*

## EMD

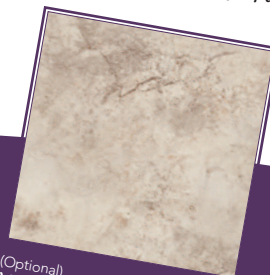
### *Extra Mile Differences*

**Newmar-Made Skid Bars** are a lot different from the flimsy ones that are more commonly used. Constructed of thick bar steel and reinforced with even more steel, this is the super-duty, real-world

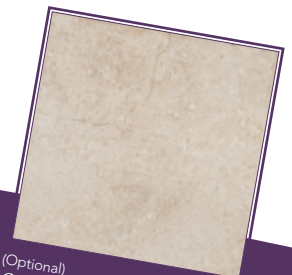
version to help protect the RV underbelly from abruptly angled roadway approaches. A Newmar exclusive.



(Standard)  
*Vinyl Flooring*



(Optional)  
*Vinyl Tile Flooring*



(Optional)  
*Ceramic Tile Flooring*



# Exteriors



Onyx  
Painted Graphics



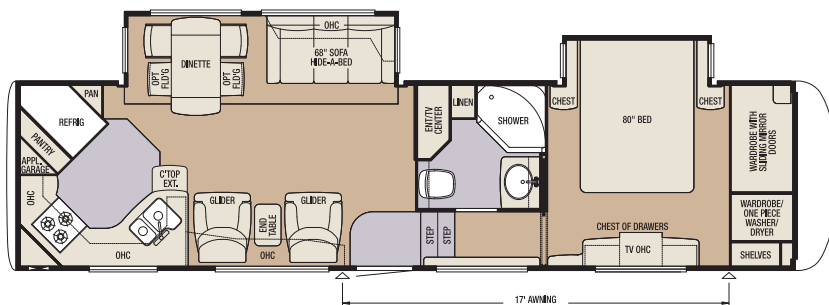
Linen  
Painted Graphics



Portafino  
Painted Graphics

# Floorplans

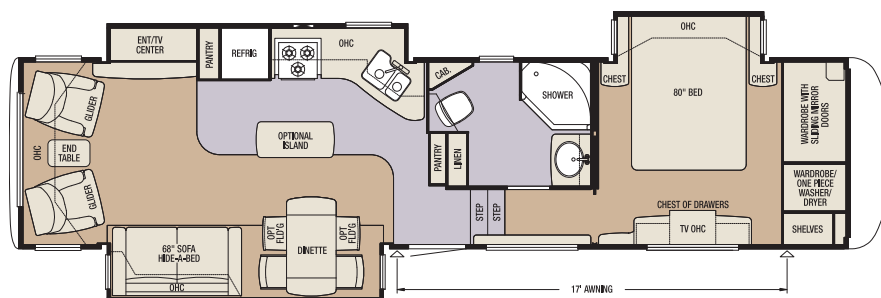
Model	TPFW 33RKSH
Tire Size	235/85R16-E
GAWR	9,000
GVWR	17,550
App. Length	36' 5"
App. Height	12' 11"
Width	101"
App. Dry Weight	13,700
App. Hitch Weight	2,603
Fresh Water (gal.)	75
Grey (gal.)	97
Sewage Cap. (gal.)	55
App. Hitch Height	47"
Heat Cap. (BTU)	42,000



Model	TPFW 33RLSH
Tire Size	235/85R16-E
GAWR	9,000
GVWR	17,550
App. Length	36' 5"
App. Height	12' 11"
Width	101"
App. Dry Weight	14,335
App. Hitch Weight	2,725
Fresh Water (gal.)	75
Grey (gal.)	97
Sewage Cap. (gal.)	55
App. Hitch Height	47"
Heat Cap. (BTU)	42,000



Model	TPFW 35KSLR
Tire Size	235/85R16-E
GAWR	9,000
GVWR	18,450
App. Length	38' 4"
App. Height	12' 11"
Width	101"
App. Dry Weight	15,025
App. Hitch Weight	2,855
Fresh Water (gal.)	75
Grey (gal.)	97
Sewage Cap. (gal.)	55
App. Hitch Height	47"
Heat Cap. (BTU)	42,000

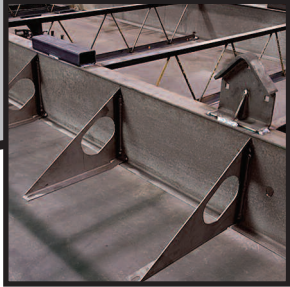




# EMD

## Extra Mile Differences

**An Incomparable Superstructure, the Torrey Pine Chassis** is designed and built by Newmar with stronger steel, extra reinforcements and additional welds to make it exceptionally robust. The huge 12-inch steel I-beams provide superior Moment of Inertia (stiffness) and Section Modulus (bending stress) over smaller, thinner I-beams and stacked tube steel. Engineers take advantage of the entire height of the I-beam to attach full 12-inch steel outriggers for extended stability and strength. Many other outriggers are partial-height. Newmar believes that a home on wheels should start with a solid and stable foundation.



Inbox

Reply

Reply All

Forward

Delete

Prev

Next

Compose

Sent Mail

Get Mail

**From:** Stacey

**To:** Karen

**Subject:** RE: How's it going?

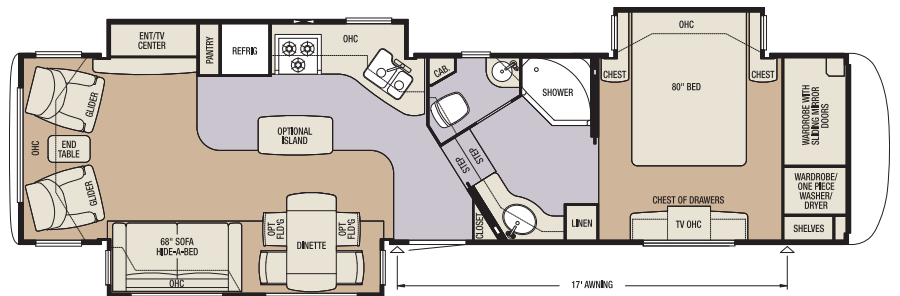
You asked how our travels have been? We're having so much fun! Our floorplan is fab...just what we need for trips by ourselves or with the little ones. Just look at how big our Marty is getting. We wouldn't trade these trips for anything!

Talk to you later.

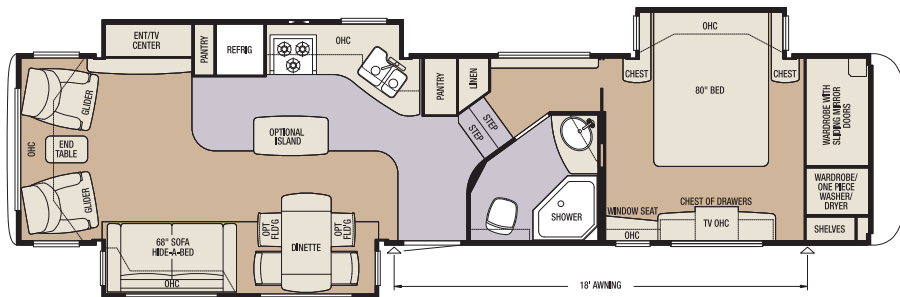
Stacey



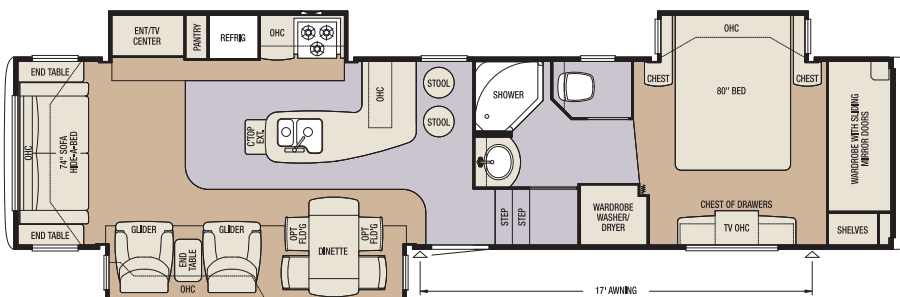
Model	TPFW 35KSLS
Tire Size	235/85R16-E
GAWR	9,000
GVWR	18,450
App. Length	38' 4"
App. Height	12' 11"
Width	101"
App. Dry Weight	15,025
App. Hitch Weight	2,855
Fresh Water (gal.)	75
Grey (gal.)	97
Sewage Cap. (gal.)	55
App. Hitch Height	47"
Heat Cap. (BTU)	42,000



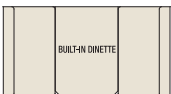
Model	TPFW 36KSAH
Tire Size	235/85R16-E
GAWR	9,000
GVWR	18,450
App. Length	39' 5"
App. Height	12' 11"
Width	101"
App. Dry Weight	14,685
App. Hitch Weight	2,790
Fresh Water (gal.)	75
Grey (gal.)	97
Sewage Cap. (gal.)	55
App. Hitch Height	47"
Heat Cap. (BTU)	42,000



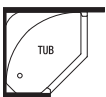
Model	TPFW 37LKS B
Tire Size	235/85R16-E
GAWR	9,000
GVWR	19,000
App. Length	40' 4"
App. Height	12' 11"
Width	101"
App. Dry Weight	15,145
App. Hitch Weight	2,875
Fresh Water (gal.)	75
Grey (gal.)	97
Sewage Cap. (gal.)	55
App. Hitch Height	47"
Heat Cap. (BTU)	42,000



## Floorplan Options



Built-In Dinette Option  
available on all models.



Fiberglass Tub Option  
(in lieu of shower)  
available on all models  
except 36KSAH.



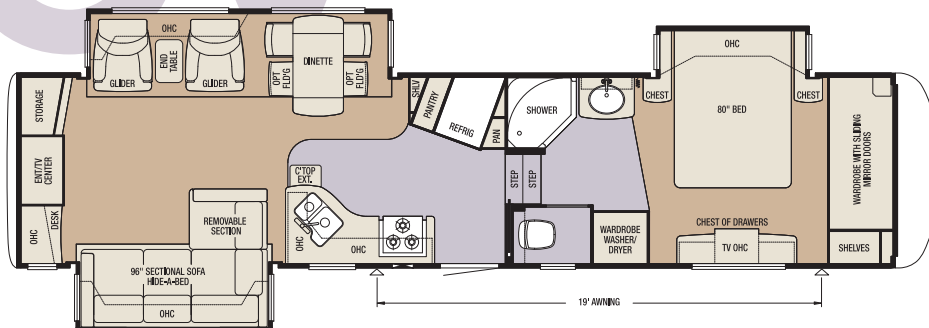
King Size Bed Option  
(in lieu of Queen)  
available on all models.



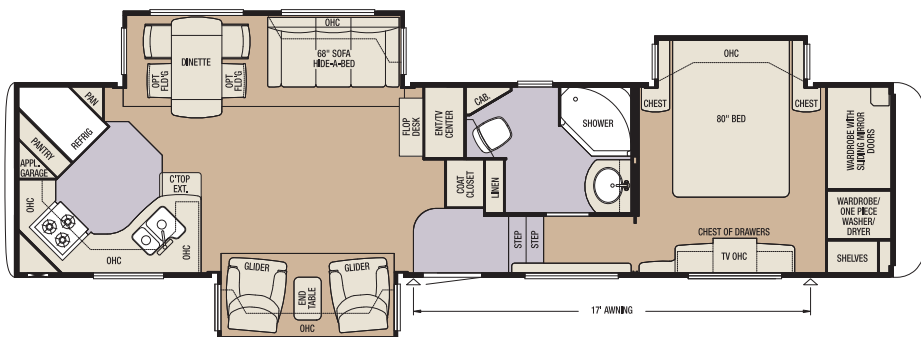
# Enio

## the journey

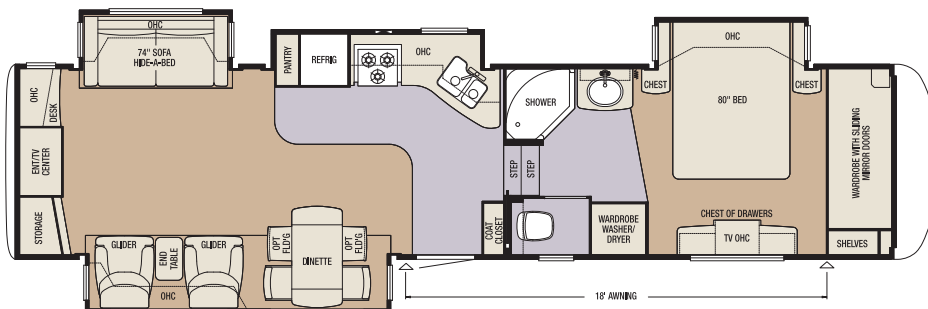
Model	TPFW 37LSRE
Tire Size	235/85R16-E
GAWR	9,000
GVWR	19,000
App. Length	39' 9"
App. Height	12' 11"
Width	101"
App. Dry Weight	15,315
App. Hitch Weight	2,910
Fresh Water (gal.)	75
Grey (gal.)	97
Sewage Cap. (gal.)	55
App. Hitch Height	47"
Heat Cap. (BTU)	42,000



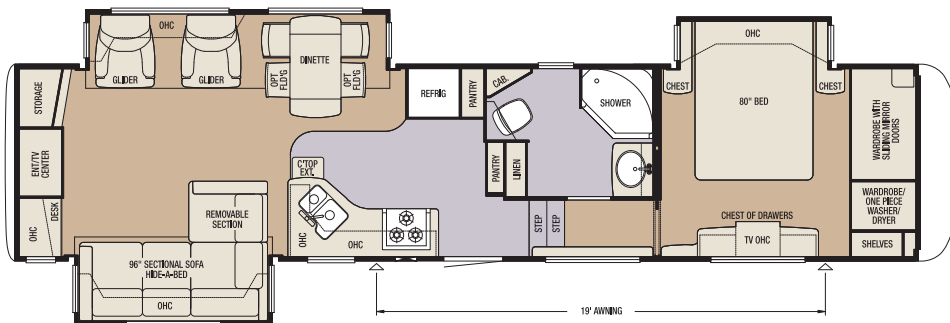
Model	TPFW 37RKSK
Tire Size	235/85R16-E
GAWR	9,000
GVWR	19,000
App. Length	39' 10"
App. Height	12' 11"
Width	101"
App. Dry Weight	15,525
App. Hitch Weight	2,950
Fresh Water (gal.)	75
Grey (gal.)	97
Sewage Cap. (gal.)	55
App. Hitch Height	47"
Heat Cap. (BTU)	42,000



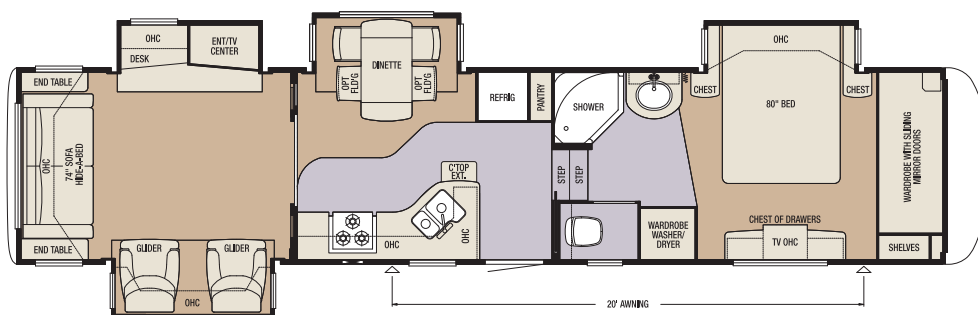
Model	TPFW 37SKRE
Tire Size	235/85R16-E
GAWR	9,000
GVWR	19,000
App. Length	39' 9"
App. Height	12' 11"
Width	101"
App. Dry Weight	15,525
App. Hitch Weight	2,950
Fresh Water (gal.)	75
Grey (gal.)	97
Sewage Cap. (gal.)	55
App. Hitch Height	47"
Heat Cap. (BTU)	42,000



Model	TPFW 38LSHS
Tire Size	235/85R16-E
GAWR	9,000
GVWR	20,000
App. Length	40' 9"
App. Height	12' 11"
Width	101"
App. Dry Weight	15,680
App. Hitch Weight	2,980
Fresh Water (gal.)	75
Grey (gal.)	97
Sewage Cap. (gal.)	55
App. Hitch Height	47"
Heat Cap. (BTU)	42,000



Model	TPFW 39QSLR
Tire Size	235/85R16-E
GAWR	9,000
GVWR	20,000
App. Length	40' 9"
App. Height	12' 11"
Width	101"
App. Dry Weight	15,550
App. Hitch Weight	2,955
Fresh Water (gal.)	75
Grey (gal.)	97
Sewage Cap. (gal.)	55
App. Hitch Height	47"
Heat Cap. (BTU)	42,000







## Optional Features

### Exterior

Metallic Painted Graphics

### Air Conditioning and Heating

15M Penguin Central Air Conditioner

15M Penguin Central Air Conditioner with Heat Pump

Extra 13.5M Penguin Central Air Conditioner in Bedroom

Wire and Brace for Second Air Conditioner

Two 40 lb. Propane Bottles

### Appliances and Accessories

Icemaker Added to Refrigerator\*

Norcold® 10 cu. ft. Refrigerator

Norcold® 12 cu. ft. Four-Door Refrigerator

Norcold® 12 cu. ft. Four-Door Refrigerator with Icemaker and Water Dispenser\*

Three-Burner Recessed Cooktop with Drawers

Central Vacuum with Deluxe Tool Kit

30" GE Profile Advantium™ Microwave Oven

Electric Fireplace\*

Electric Fireplace with Corian® Hearth\*

Roof-Mounted Satellite Prep

Two-Piece Washer/Dryer\*

One-Piece Washer/Dryer\*

12 Gal. Gas/Electric Water Heater with Direct-Spark Ignition

High-Definition Wiring with Selector Switch

### Cabinets and Furniture

Ginger Maple Hardwood Cabinetry

Ginger Maple Glazed Hardwood Cabinetry

Built-In Booth Dinette

UltraLeather Sofa\*

Island Kitchen Base Cabinet\*

King Bed

Two Fixed Dinette Chairs with In-Seat Storage

Two Folding Dinette Chairs with In-Seat Storage

Folding Desk Chair\*

Comfortaire Mattress (Main Bed)

### Electrical Features

7.0 Cummins Onan® Generator with Auto Changeover and Gen Prep

Gen Prep (Includes Energy Command and Fuel Tank with Gauge)

Solar Prep

### Exterior Features

Bike Rack Carrier

Pullout Storage Tray in Pass-Through Storage

Entry Porch with Collapsible Handrail at Main Entrance Door

Rear Ladder

### Interior Features

Vinyl Tile Floor in Kitchen, Bathroom, Foyer and on Steps

Ceramic Tile Floor in Kitchen, Bathroom, Foyer and on Steps

Simulated Plank Floor in Kitchen and Foyer

### Plumbing and Bath Features

Exterior Shower

Fiberglass Tub with Glass Door

12V Heat Pads for Holding Tanks (N/A CSA Units)

Thetford™ Aria Sculptured China Toilet

### Windows, Awnings and Vents

Carefree® Armored Power Side Awning

Carefree® Armored Slideout Cover Pkg.\*

Carefree® Armored Window Cover Pkg.\*

Fan-Tastic® Vent with Rain Sensor in Kitchen and Bathroom Areas

Double-Pane, Tinted Safety-Glass Windows

Clear Skylight in Bathroom, Kitchen and Living Areas

### Chassis Features

3-Inch Non-Adjustable Lift Kit

MOR/ryde® Rubber Pin Box

Independent Power Front Jacks

Rear 12V Power Twin Stabilizer Jacks

Electric Over Hydraulic Disc Brakes

## Standard Features

### Air Conditioning and Heating

15M Brisk Air Central Air Conditioner

Two 30 lb. Propane Bottles with Auto Regulator

42,000 BTU Furnace with In-Floor Ducted Heat

Propane Leak Detector

### Appliances and Accessories

10 Gal. Gas/Electric Water Heater with Direct-Spark Ignition

30" Convection Microwave Oven

Recessed Three-Burner Cooktop with Electronic Ignition

22" Oven with Glass Door and Electronic Ignition

Entertainment Package:

32" LCD TV\* and Surround Sound System with Recessed Speakers, DVD, CD and AM/FM Stereo Tuner and 19" LCD TV in Bedroom

Norcold® 8 cu. ft. Refrigerator with Thermostat and LED Readout

Flush-Mounted Polished Corian® Range Cover

Cable TV Connection with RG-6 Coax

Living Room Ceiling Fan

Corian® Knife Block behind Cooktop

Hardwood Raised-Panel Refrigerator Front

Phone Jack in Living Area

Secondary Phone Jack for Internet Access at Dinette or Desk

TV Antenna with Power Booster and Two Interior Jacks

Prep for Ground Satellite Dish - Phone, TV Jack and Receptacle

Two Bedroom Radio Speakers with On/Off Switch

DVD Player in Bedroom

Washer/Dryer Prep

Living Room Pullout TV

Fire Extinguisher, Smoke Detector and Carbon Monoxide Detector

### Cabinets and Furniture

Windsor Beech Hardwood Cabinets with

Raised-Panel Cathedral Overhead Doors

Hide-A-Bed Sofa with Decorative Pillows

Glider/Recliner Chairs\*

Bar Stools\*

End Table with Metal Base\*

Residential-Style Ball Bearing Drawer Guides

Freestanding Dinette Table

Two Dinette Chairs with In-Seat Storage

Polished Corian® Kitchen Countertop with Integrated Bowl

Polished Corian® Kitchen Sink Covers

Corian® Bathroom Countertop with Integrated Bowl

Cedar-Lined SuperStorage™ Bedroom Wardrobe with Two Full-Width Shoe Racks

Lifts on Bed Top

Kitchen Pantry with Adjustable Shelves\*

Decorative Bedroom Dresser Toe Kick

Queen Bed with Quilted Bedspread, Shams, Accent Pillows and Bed Skirt

Nightstand

Bed Slide Overhead Cabinets

Drawers at Bathroom Lavatory Base

Hardwood Entry Door Trim

Hardwood Decorative Front Wardrobe Header

Kitchen Countertop Extension\*

Pullout Step-Stool with Storage in Bathroom Cabinet\*

### Electrical Features

110V Exterior Receptacle

12V Lighting Throughout

Halogen Ceiling Lights Throughout

Track Lighting in Kitchen

50 AMP Electrical Service with Detachable Cord

55 AMP Converter

Convenience Lights at Main Entry Door, Entry Door Step, Sewer Hook-Up, Hitch and Water Works Compartment

Decorative Light over Dinette

Dual Battery Box Compartment

Three Exterior Security Lights

Fluorescent Light over Kitchen Sinks

Decorative Tube Light at Kitchen Toe Kick

Wall Reading Lights in Living Area Slideouts

Additional Water Pump Switch in Water Works Compartment

Cable Jack and 110/12V Outlet in Door Side Pass-Through Storage Compartment

Battery Disconnect Switch

Command Center above Entry Door

Manually Operated Hold-to-Run Slideout Switch

### Exterior Features

Painted Graphics

30" Gelcoated Radius Entry Door

Lighted Exterior Storage Compartments

Two Cargo Hooks in Exterior Storage Area

Cargo Net in Exterior Storage Area

Extendable Grab Handle at Entrance Door

Molded Fender Wells

Rear Skid Bars Prepped for Bike Rack Attachment

Main Entrance Door with Triple Step

Heated Pass-Through SuperStorage™

Basement Compartment

Dedicated Compartment in Basement for Utilities

Pass-Through SuperStorage™ with Door Struts

### Interior Features

Padded Vinyl Ceiling

Sculpted Carpet with High Density Padding in Living Room and Bedroom

Vinyl Floor in Kitchen, Foyer and Bathroom

Hair Dryer

Day/Night Pleated Window Shades with Jabots in Living Room and Bedroom

Mini Blinds in Kitchen and Bathroom

Vertical Blinds on Rear Bay Window

Decorative Wall Border

Interior Assist Handle at Main Entry Door

Kitchen Wastebasket

Fabric Headboard with Wood Trim

Steps with Hardwood Bullnose Trim

Decorative Glass Door Accents in Living Room and Bedroom

Decorative Hardwood Arched Pocket Door Headers

Hardwood Entry Door Trim

Hardwood Raised Six-Panel Interior

Passage Doors

Hardwood Crown Molding in Living Room and Kitchen Ceiling

Decorative Hardwood Slide Fascias

Molded Silverware Divider Tray

### Plumbing and Bath Features

Demand Water System with FloJet® Pump

Oil-Rubbed Bronze Hardware and Fixtures

Bathroom Accessories:

Toilet Paper Holder, Two Robe Hooks and Towel Bar

Fiberglass Tub and Shower with Glass Enclosure

Adjustable-Height Shower Head

High-Rise Kitchen Faucet with Separate Pullout Sprayer

Medicine Cabinet with Deluxe Lighting

Monitor Panel

Sewage Holding Tank Rinse

Sewage Hose Storage Tray

Lighted, Heated and Enclosed Exterior Water Works Compartment

Thetford™ Aqua Magic II Toilet with Spray Attachment

In-Line Water Filter for Entire Unit

Water Heater Bypass

15' Quick-Connect Hose and Sprayer in Pass-Through Storage

### Construction Features

12" I-Beam Custom-Built Frame

BriteTEK™ Roof with Walkable Decking and Radius Aluminum Roof Wrap

5/8" Structurwood® Floor Decking

5/8" Bead Foam Insulation Laminated in Sidewalls

Aluminum Framed Sidewalls, Roof, Front and Rear on 16" Centers

Gelcoated Exterior Sidewalls and Baggage Doors

Gelcoated Fiberglass End Caps

Fully Heated and Insulated Holding Tanks

Enclosed Underbelly with 4"x8" Sheets of Aluminum Laminated to 5/8" Bead Foam

PolarPak R-19™ Insulation in Roof, Floor, Front and Rear End Caps

Composite R-Values:

Roof: R-22 Floor: R-26 Sidewalls: R-11

### Windows, Awnings and Vents

Create-A-Breeze Vent with Auto Lift in Bathroom

Carefree® Fiesta LTD Armored Side Awning

Dark Tinted Safety-Glass Windows

Skylight in Bathroom\*

### Chassis Features

Shock Absorbers

Dual Wheels

Recessed 17.5" E-Rated Spare Tire with Lift Kit

17.5" H-Rated Tires

MOR/ryde® RE Suspension

EZ Lube® Axles

Extended Pin Box

Stainless Steel Wheel Simulators

Power Front Jacks

Quick-Release H/D Pin for Front Jack Legs

Rear Stabilizer Jacks (1 pair)

\* check with dealership on floorplan availability



WHEN YOU KNOW THE DIFFERENCE™

### NEWMAR CORPORATION

355 N DELAWARE ST

PO BOX 30

NAPPANEE IN 46550-0030

574-773-7791 Fax 574-773-2895

[www.newmarcorp.com](http://www.newmarcorp.com)

Some features in our literature are optional. Colors and finishes are photographic representations. The actual materials may look different. Prices, specifications and floorplans are subject to change at Newmar's discretion, without prior notice or obligation. Please see your dealer for actual samples and specifications. ©2008 Newmar Corporation. Litho in USA. NEW21499 5/08-15M

Your Official Torrey Pine Dealer: