



➤ KING AIRE ➤
UNPARALLELED

2011



WHEN YOU KNOW THE DIFFERENCE™



THE COACH FIT FOR ROYALTY.

When you are ready for the ultimate in fine motor coaching, King Aire is ready for you. From its 650 horsepower diesel pusher to its fully appointed coach, you'll feel pampered at every stop along the way – and on every mile in between. Its sophisticated contemporary styling envelops you in understated elegance. As you luxuriate in each thoughtful appointment, sit back and smile. This is truly your time.



— ♦ —
 With this much power behind
 you, King Aire's Comfort
 Drive™ Steering gives you
 full control. Dual monitors
 and Sirius® Satellite Radio®,
 standard, of course.
 — ♦ —

**Does not include Sirius subscription*





— ♦ —
*King Aire feels like
 a custom built home,
 with top of the line
 appliances, designer
 hardwood cabinets
 and a luxurious
 Kimona Silk® tile floor.*
 — ♦ —

EXPANSIVE LUXURY.



Your King Aire kitchen is ready for even the most discriminating picture, with (featured finish) hardwood cabinets, solid polished Corian® countertops and a tile and glass designer backsplash.



The ultimate spa on wheels, at your service. Relax in the splendor of your roomy radius door shower with designer tile details.



A powered dinette table transforms from coffee table to breakfast nook. And a 40" Sony® LCD TV with Dolby Digital surround sound and Blu Ray DVD player can also power up your evenings.

**optional*



— ♦ —
As you lounge in your king size Sleep Number Bed* with radius corners, you might want to nudge up the volume on the remote for your 40" Sony® flatscreen TV with Bose Wave® surround sound with Blu Ray DVD player.
— ♦ —

**Sleep Number Bed is optional.*

A UNIQUE ARRAY OF FIRST-CLASS FINISHES

We've carefully selected the finest materials for your King Aire. Ultra Leather®, Corian®, fine designer tiles and peerless hardwoods, in tasteful combinations from rich blacks to deep wines and soothing taupes. Now comes the hard part. You have to choose.



— ♦ —
Metro
— ♦ —



— ♦ —
Porcelain
— ♦ —



— ♦ —
Portico
— ♦ —



— ♦ —
Vintage
— ♦ —



Soho Cherry - Standard



Rattan Glazed Maple



Ginger Glazed Cherry



Suede Glazed Maple

**All wood finishes are high gloss and interchangeable between decor schemes.*

STANDARD FEATURES AND OPTIONS

2011 STANDARD FEATURES

CHASSIS FEATURES

- Spartan® K3 Chassis with IFS
- Cummins® ISX 650 hp
- Allison® 4000 MH Transmission
- Tag Axle
- Automatic Traction Control
- Comfort Drive™ Steering with Power Column and Adjustable Control
- Accuride® ACCU-SHIELD™ Non-Polish Aluminum Wheels
- HWH® Four-Point Hydraulic Jacks with Single Touch Control and Chassis Air Leveling
- Power Tilt-and-Telescope VIP Smart Wheel® with Black Leather
- Memory Settings for Driver's Seat, Pedals, Steering Wheel and Exterior Mirrors
- Cruise Control
- Recessed Fuel Fills with Crossover to Fill from Either Side
- Back-Up Alarm
- Anti-Lock Braking System
- Front and Rear/Tag Disc Brakes
- Electronic Chassis Information Display in Dash
- Tire Pressure Monitor System
- Chassis Service Center
- Leece-Neville 200-Amp Alternator
- 200 Gal. Fuel Tank
- 55-Degree Cramp Angle

AIR CONDITIONING & HEATING

- Three 15M Penguin™ Heat Pump Central Air Conditioners with Remote Control Thermostat
- Hydronic Zone Heating System
- Roof Air Conditioning Drainage System

APPLIANCES & ACCESSORIES

- GE® 30" Profile Advantium™ Microwave Oven
- Two-Burner Recessed Gas Cooktop
- Polished Corian® Range Cover
- Norcold® 17 Cu.Ft. 4-Door Refrigerator with Auto Defrost, Ice-maker and Water Dispenser
- Norcold Freezer on Pullout Tray
- Washer/Dryer Prep
- Sony® 40" LCD TV in Living Area
- Sony® 40" LCD TV in Bedroom
- Trip Tek™ Electronic Travel Information (Displayed on Rearview Monitor)
- Secondary Multiple Touch Screen
- Video Security Cameras with Monitor
- Surround Sound System with CD/DVD/Blu-Ray Player
- Exterior Entertainment Center with 32" Sony® LCD TV and AM/FM Radio with CD Player

- Bose® Wave Radio with CD Player and Alarm Clock in Bedroom
- Garmin® Navigation System Displayed on Dash Touch Screen Monitor
- High Definition Component Wiring and HD-ready Video Switching System
- Kenwood® AM/FM/Sirius® Satellite Radio-ready with CD and Touch Screen Monitor (Does not include SIRIUS® Monthly Subscription)
- Sony® Blu-Ray CD/DVD Player in Bedroom
- 8.5" X 11" Safe
- Pre-programmed Universal Remote Control
- Central Vacuum with Deluxe Tool Kit

CABINETS & FURNITURE

- Soho High Gloss Cherry Hardwood Cabinets with Fully Overlayed Cabinet Doors
- Hidden Leaf-Dinette Table with Corian® Top and Four Chairs (Two Fixed, Two Folding) *
- Polished Corian® Countertop in Kitchen with Undermounted Stainless Steel Sink and Flush Sink Covers
- Polished Corian® Countertop in Bathroom
- Polished Corian® Countertop on Bedroom Nightstands
- Residential Style Full Extension Ball Bearing Drawer Guides
- Drawers with Dove Tailed Sides
- Villa™ Furniture
- Ultraleather/Vinyl Heated Driver Seat with Eight-Way Power, Power Lumbar and Power Recline
- Ultraleather/Vinyl Heated Passenger Seat with Eight-Way Power, Power Lumbar, Power Recline and Power Footrest
- Cedar Paneling in Rear Wardrobe
- King Bed with Hardwood Raised-Panel Bed Base

ELECTRICAL FEATURES

- 12.5 kW Cummins Onan® Diesel Quiet Generator on Hydraulic Slide and Auto Changeover
- 50 Amp Electrical Service with Flexible Cord on Power Cord Rewind Reel
- Four AGM House Batteries on Pullout Tray
- 5 Watt Solar Panel
- 2,800 Watt Pure Sine Wave-Inverter with Automatic Generator Start
- Midship Side Turn Signals
- Recessed Docking Lights
- Switched Receptacle for Engine Block Heater
- Recessed Halogen Lights in Ceiling and Overhead Cabinets
- Lighted Wardrobes with Automatic Switches
- ICC Light Flasher Switch
- Mood Light in Lambrequins, Kitchen Valance and Bed Base
- Daylight Headlight System

EXTERIOR FEATURES

- Full-Paint Masterpiece™ Finish with Super Clear Coat & Front Protective Film
- One-Piece Bonded Windshield
- Convex Exterior Chrome Mirrors with Remote Control, Defrost and Turn Signals
- Dual Latch Front Door with Power Flush Stepwell Cover
- Power Locking Baggage Doors
- 15,000 lb. Towing Hitch with Two Extra 14 Gauge Wires
- Holding Tank Levels Displayed in Exterior Water Works Compartment
- Mud Flaps

INTERIOR FEATURES

- Sculpted Padded Vinyl Ceiling
- Power Duo Day/Night Privacy Window Shades (Windshield and Driver/Passenger Side Windows)
- Lined Day/Night Pleated Window Shades and Lambrequins
- Polished Corian® Window Sills
- Polished Porcelain Floor Tile in Kitchen, Bathroom, and Entrance Areas
- Raised-Panel Interior Passage Doors
- Power-Activated Sun Visors

PLUMBING & BATH FEATURES

- Demand Water System with Aquajet™ "ES" Pump
- Thetford™ Aria Sculptured China Stool (Thetford Vacuum Flush Stool in Rear Baths)
- Corian® Shower Walls with Ceramic Tile Inserts and Solid Surface Shower Pan
- Three Monitor Panels (Two in Front and One in Bedroom)
- MANABLOC® Plumbing System
- Monoplex Water-Pump Switches Located in Bathroom, Kitchen and Near Gate Valves
- Auto Water-Fill System
- Whole House Water Filter
- Power Rewind Water-Hose Reel

CONSTRUCTION FEATURES

- Power Lock Arms on All Slideout Rooms

WINDOWS, AWNINGS, & VENTS

- Frameless Double-Pane Tinted Safety-Glass Windows
- Fan-Tastic® Vent with Rain Sensor in Kitchen Area and Bathroom
- Driver's Side Power Window
- Girard® Power Bedroom and Slideout Window Awnings
- Two Girard® Integrated Power Box Side Awnings with Wind Sensor and Remote
- Girard® Power Front Entrance Door Awning
- Keyless Entry with Doorbell and Touch Pad

2011 OPTIONAL FEATURES

AIR CONDITIONING & HEATING

- Electric Heat Under Floor Tile

APPLIANCES & ACCESSORIES

- Stackable Washer/240 Volt Dryer in Full Length Cabinet *
- Fisher Paykel® Dishdrawer *
- All-Electric Unit: with Whirlpool® Refrigerator and Four Extra Batteries
- Sony® 40" LCD TV in Front Overhead Cabinet
- Remote-Controlled Rearview Color Camera
- KVH R-6 In-Motion Satellite without Receiver
- Central Vacuum with Deluxe Tool Kit
- CB Radio with Antenna
- Security System
- Extra Monitor for Navigation System on Passenger Side

CABINETS & FURNITURE

- Suede Glazed Maple High Gloss Hardwood Cabinets
- Rattan Maple Glazed High Gloss Hardwood Cabinets
- Ginger Glazed Cherry High Gloss Hardwood Cabinets
- Ultraleather Hide-A-Bed with Air Mattress/ Dinette Ensemble with Two Folding Chairs *
- Two Leather/Vinyl Recliners *
- Sleep Number® Air Mattress for Main Bed
- Traditional Interior Styling Package: Cabinet Doors, Passage Doors, Slideout Fascia, Plumbing Hardware and Sinks

ELECTRICAL FEATURES

- Roof-Mounted Spot Light

EXTERIOR FEATURES

- Large Storage Tray with Access from One Side or Either Side
- Power Sliding Storage Tray

INTERIOR FEATURES

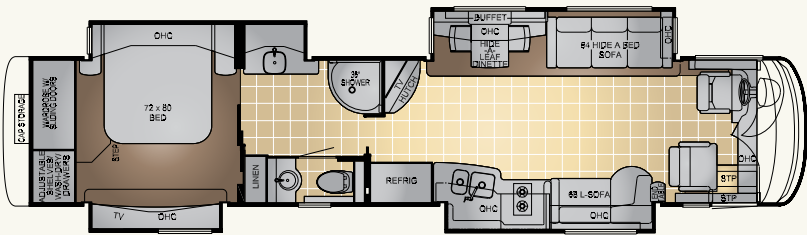
- Power Silhouette Window Shades
- Polished Porcelain Floor Tile Extended into Bedroom

PLUMBING & BATH FEATURES

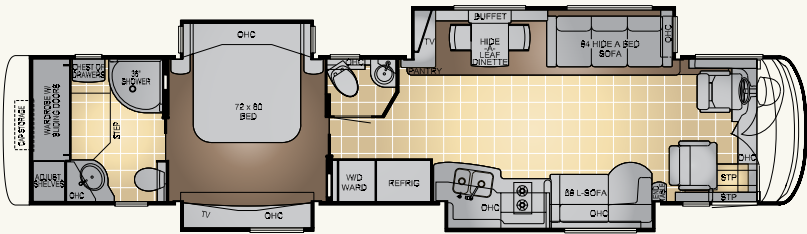
- Assist Handle in Tub/Shower

FULLY CONSIDERED FLOORPLANS

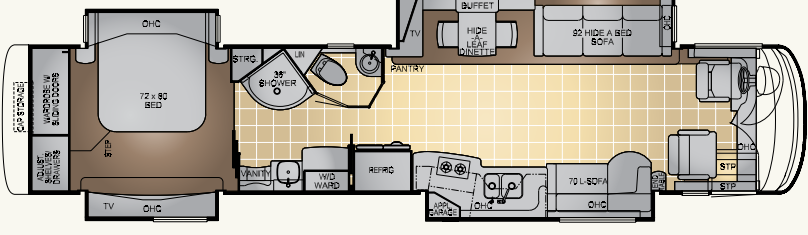
Each King Aire floorplan has been carefully designed to give you the ultimate in luxury, comfort and storage amenities. Combine your floorplan selection with your decor and finish options for the perfect King Aire experience.



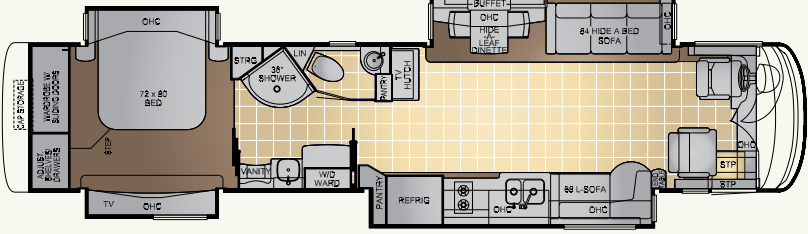
4567



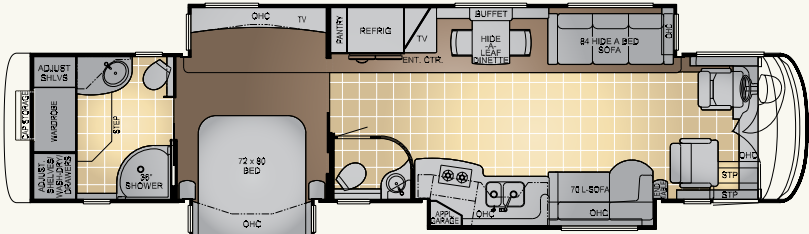
4571



4570



4572



4574

UNRIVALED KING AIRE CONSTRUCTION

No doubt about it. The Spartan® K3 chassis, with its hefty 20,000 lb. IFS (Independent Front Suspension), is the strongest, highest performing coach ever built. Its web of tubular truss frames and substructure support beams form a foundation stable enough to allow extensive passthrough storage. This and King Aire’s GVWR of 54,000 pounds, with a 14,000 pound tag axle, allows the coach to expand beyond the chassis footprint, giving you precious extra living space. And with its powerful Cummins® ISX 650 Hp engine, you get the ultimate power to maneuver, handle turns and pass easily, even on steep inclines. Rest assured – in case of emergency – that its roadside assistance program will be in place for the entire warranty period.



- ROOF R-VALUE = 16**
 - a. Fiberglass Roof
 - e. Fiberglass Batten Insulation
 - d. A/C Ducting
 - e. Aluminum Rafter Framing
 - f. Kraft Paper Vapor Barrier
 - g. 5/8" Bead Foam
 - h. 3/16" Panel
 - i. Padded Vinyl Overlay
- SIDEWALL R-VALUE = 11**
 - j. 3/16" Plywood Interior Wall
 - k. 5/8" Bead Foam
 - l. Kraft Paper Vapor Barrier
 - m. Fiberglass Batten Insulation
 - n. 3/16" Plywood Exterior Wall
 - o. Composite One-Piece Gelcoat Exterior Sidewall
 - p. Aluminum Framing with 3 1/2" Header Above
- FLOOR R-VALUE = 16**
 - q. Carpet/Tile
 - r. Carpet Padding
 - s. 5/8" Floor Decking
 - t. Fiberglass Batten Insulation
 - u. 2"x 3" Wood Framing
 - v. Polyethylene Moisture Barrier
- BASEMENT R-VALUE = 4**
 - y. Cargo Liner
 - z. 3/8" Floor Decking
 - aa. 3/16" Luan Panel
 - bb. 1 1/2" Bead Foam
 - cc. Aluminum Sheeting with Steel Support Rails to Prevent Bowing and Flexing
- 15M Penguin™ Heat Pump Central Air Conditioners (3)
 - One-Piece Bonded Windshield
 - Coated Aluminum Wheels
 - Frameless, Double-Pane, Tinted Safety-Glass Windows
 - Side-Hinged Baggage Doors with Optional Storage Tray

FLOORPLAN SPECIFICATIONS

Floorplan	App. Overall Length	Width	App. Overall Height	Interior Width	Interior Height	Grey	Sewage	Water	Propane	Furnace
4567	44' 11"	101.5"	13' 4"	95.5"	84"	80 gal.	60 gal.	140 gal.	32 gal.	50,000 btu
4570	44' 11"	101.5"	13' 4"	95.5"	84"	80 gal.	60 gal.	140 gal.	32 gal.	50,000 btu
4571	44' 11"	101.5"	13' 4"	95.5"	84"	80 gal.	60 gal.	140 gal.	32 gal.	50,000 btu
4572	44' 11"	101.5"	13' 4"	95.5"	84"	80 gal.	60 gal.	140 gal.	32 gal.	50,000 btu
4574	44' 11"	101.5"	13' 4"	95.5"	84"	80 gal.	60 gal.	140 gal.	32 gal.	50,000 btu

CHASSIS SPECIFICATIONS

Floor-plan	Engine HP	Axle Ratio	Fuel Cap.	Wheelbase	Front GAWR*	Rear GAWR*	Tag GAWR*	GVWR*	GCWR*	App. UVW	App. NCC
4567	650	4.3	200 gal.	294+TAG	20,000 lb.	20,000 lb.	14,000 lb.	54,000 lb.	69,000 lb.	44,450 lb.	9,550 lb.
4570	650	4.3	200 gal.	294+TAG	20,000 lb.	20,000 lb.	14,000 lb.	54,000 lb.	69,000 lb.	44,400 lb.	9,600 lb.
4571	650	4.3	200 gal.	294+TAG	20,000 lb.	20,000 lb.	14,000 lb.	54,000 lb.	69,000 lb.	44,850 lb.	9,150 lb.
4572	650	4.3	200 gal.	294+TAG	20,000 lb.	20,000 lb.	14,000 lb.	54,000 lb.	69,000 lb.	44,250 lb.	9,750 lb.
4574	650	4.3	200 gal.	294+TAG	20,000 lb.	20,000 lb.	14,000 lb.	54,000 lb.	69,000 lb.	45,400 lb.	8,600 lb.

Lengths, heights, widths and dry weights are approximate. Weight will vary based on optional equipment added to the above base weight.

GAWR: Gross Axle Weight Rating is the maximum permissible weight for an axle.

GVWR: Gross Vehicle Weight Rating is the maximum permissible weight for a fully loaded motor coach.

GCWR: Gross Combination Weight Rating is the value specified by the manufacturer of the vehicle as the maximum allowable loaded weight of this motor coach and any towed trailer or towed vehicle.

UVW: Unloaded Vehicle Weight is the weight of this motorcoach as built at the factory with full fuel, engine oil and coolants. The UVW does not include cargo, fresh water, propane gas or dealer-installed accessories.

NCC: Net Carrying Capacity is the maximum weight of all occupants, including the driver, personal belongings, food, fresh water, waste water, propane gas, tools, tongue weight of towed vehicle, dealer-installed accessories, etc., that can be carried by the motorcoach.

*Specifications supplied by the chassis manufacturer.

NEWMAR EXPRESS LIMITED WARRANTY
Every King Aire Diesel Pusher is backed by Newmar's one-year limited warranty/unlimited miles. Ask your Newmar dealer for details.

LIMITED FIVE-YEAR STRUCTURAL WARRANTY
If any part of your Newmar recreational vehicle superstructure (which is the steel/aluminum structure of the sidewall, roof or frame) fails to perform properly within five years from the date of purchase because of faulty workmanship or material supplied by Newmar, it will be repaired without charge for either parts or labor by Newmar. This structural warranty is available only to the original purchaser and is non-transferable.





The Newmar Kountry Klub is an exclusive club for owners of fine Newmar products that offers many advantages and benefits to its members. Learn more at www.newmarkountryklub.com.

The quiet, energetic farm town of Nappanee, Indiana is home to Newmar's owners, the Miller family. They are actively engaged in its operations, embracing employees, suppliers, dealers and customers as part of the Newmar

➤ A MEMORABLE FINISH ➤

Established over 40 years ago, Newmar is an innovator and leader in the RV manufacturing industry. Its quality craftsmanship is recognized nationally. The Newmar dealer network spans across the United States and Canada.

Please be our guest for a Newmar factory tour. Call 1-800-860-0086 to learn more.

(Please affix dealer stamp in this area.)

family. The family has grown since 1968 but continues to strive for faithfulness to the tenets of its founders, including a strong community, bearing burdens for others, forgiveness, fairness, honesty, integrity, and peace with one's neighbors.



*Mahlon Miller, Newmar Corp. owner
Matthew Miller, Newmar Corp. president.*

www.newmarcorp.com

NEWMAR CORPORATION • 355 N DELAWARE ST • PO BOX 30 • NAPPANEE IN 46550-0030

574-773-7791 • Fax 574-773-2895