

2013 CANYON STAR - Gas Motor Coach



WHEN YOU KNOW THE DIFFERENCESM

2013 Canyon Star

Gas Motor Coach

2013 CANYON STAR

Gas Motor Coach

The 2013 Canyon Star's amazingly versatile floorplans let you choose a traveling office, an attached garage, even a two bedroom home on the road.



Canyon Star Exterior
Sea Glass Designer Style

Cummins Onan



FEATURES AT A GLANCE

- Ford® F-53 22,000 lb. or 26,000 lb Chassis*
- Mobile phone or MP3 player USB integration plus laptop plug-in
- Full-Paint Masterpiece Finish™ with Front Protective Film
- 5.5-kW Cummins Onan® Marquis Generator
- Rearview Color Monitor System with Audio
- 16" on Center Aluminum Frame Construction



Rich in Every Way. Except the Price.

Many seasoned motorhome enthusiasts who experience the new 2013 Canyon Star mistake it for a higher end diesel coach. But look again. Just because it's so roomy and has so much storage space doesn't mean you pay a diesel coach price. From Canyon Star's larger slideouts to its king size bed to its roomy wardrobe closet and top of the line finishes, you'll bask in the glow of having made a clever decision.



* Chassis depending on floorplan

Ingenious Choices

Starting with its streamlined, carlike exterior and highly detailed exterior paint schemes, Canyon Star's richness is more than skin deep. Inside, its ergonomically designed cockpit offers a well designed instrument panel, tilt steering and cruise control for easy driving. Add to that its incredible versatility: from a toy hauler with rear cargo area and optional electric bunk bed to an optional half bath accessed from an aft door to an optional rolltop desk/dinette – Canyon Star offers the ultimate customization.

SONY®

Make Plans for Spacious Living.

Stretch out. You deserve it. And Canyon Star lets you take command of the way you want to live, from the comfort of your Flexsteel® Ultralux Leather power driver's seat to the unexpected spaciousness created by its smart floorplans and large slideouts.



FEATURES AT A GLANCE

- Maple Glazed Mitered Designer Cabinet Doors
- Flexsteel® Ultralux Leather Furniture
- Sony® 32" LCD TV with DVD Player in Living Area and Bedroom
- Vinyl Tile Floor in Kitchen, Living Area and Bathroom



Canyon Star

Sea Glass Décor with Sienna Maple Glazed Mitered Designer Cabinetry with optional plank flooring in Floorplan #3940



The Smartest Kitchen on the Road

Glazed and mitered wood cabinet doors. Hidden hinges.

A solid surface countertop and a backsplash with designer tile feature. Even an array of dinette options. It's smart.

And so are you.



FEATURES AT A GLANCE

- Solid Surface Countertop in Kitchen
- Under Mounted Stainless Steel Sink
- Black Norcold® 8-Cu.Ft. Refrigerator
- Optional Laminate Plank Floor in Kitchen and Bathroom
- Optional Stacked Washer/Dryer in Wardrobe Aft of Kitchen

Everyday Elegance

A mini-peninsula kitchen in glazed Sienna Maple with a new, more dimensional look. Standard black appliances. Multiple dining and entertainment options, from a hidden leaf dinette to a combination desk with buffet dinette table to a round dinette table. In this buffet, you decide.



Nap, Anyone?

Lounge any time, in your Canyon Star's king size bed with padded headboard – plus new, richer linens and matching window surrounds. For even more coziness, designer metal inserts and finely carved woodwork hug the sleeping area. Wake up, sleepyhead!

A Second Entertainment Zone

The show's on with your second Sony® LCD TV and DVD – built into the solid handcrafted wardrobe. Close the pleated day/night shade. Bring on the popcorn. This reclining theater is perfect for the two of you.

SONY®



FEATURES AT A GLANCE

- Smooth Top King Size Bed
- Quilted Bedspread and Accent Pillow
- Sony® 32" LCD TV with DVD Player
- Glazed mitered Empire Maple Cabinet Doors





Pamper Space

Canyon Star's bathroom is a private haven, starting when you step into its roomy glass enclosed shower. Whether you choose vinyl tile floor or the optional laminate plank flooring, you step into comfort and richness. And a newly designed wardrobe stands ready to house all your spa needs.

Extra Room for Friends, Family and You

That's not all. Canyon Star has an optional half bath in its rear garage* – so family or friends enter separately, adding privacy to the master suite. And its full height lighted closet creates space for whatever travels with you.

FEATURES AT A GLANCE

- Laminate Countertop with Solid Surface Edge and Porcelain Sink
- Pullout Step Stool with Storage
- Lighted Full Height Closet
- Optional Washer/Dryer in Storage Closet

Full Throttle Ideas

Canyon Star’s possibilities are as wide open as you want to make them. Like its optional larger refrigerator – or standard pantry. Newmar’s unique optional roll top desk/dinette* is perfect for meeting, entertaining, dining or working on the go.



Room to Decide What You Really Want

Enjoy smart options and versatile floorplans – including the newly lengthened #3920 toy hauler floorplan that provides more room throughout.



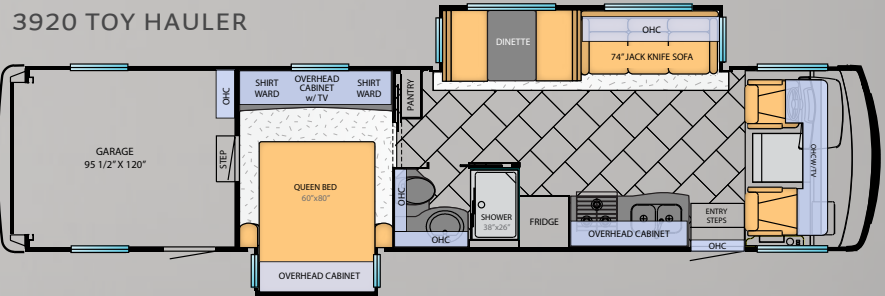
FEATURES AT A GLANCE

- Desk/Dinette Table with Roll Away Top (Two Fixed, Two Folding)*
- Electric Bunk Beds with Removable Rug in Garage**



Not Just a Garage. An Open Room.

The rear garage has been used many ways by Canyon Star owners, from a children’s room to a craft studio to an animal kennel to an office to cycle or equipment storage. An optional aft-accessed half bath and electric bunk bed turns your Canyon Star into a two bedroom home.



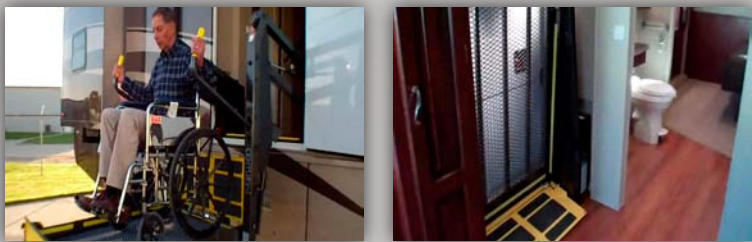
* Unique patent pending roll top dinette design specially developed by Newmar founder Mahlon Miller and his design team.

**Optional

* Check with dealer on floorplan availability

Wheelchairs Welcome

Due to popular request, Newmar engineered a Canyon Star for wheelchair bound motor coach enthusiasts. With a power wheelchair lift, a 30" wide path from front to bed with slideouts in, a microwave under the cooktop and control switches behind the passenger seat, life opens up.



The accessible Newmar you've been waiting for

Grab bars. A roll-in shower. A roll-under bath sink with lower medicine cabinet mirrors. Keep looking. There's even an L-shaped dinette with wheelchair seating space.

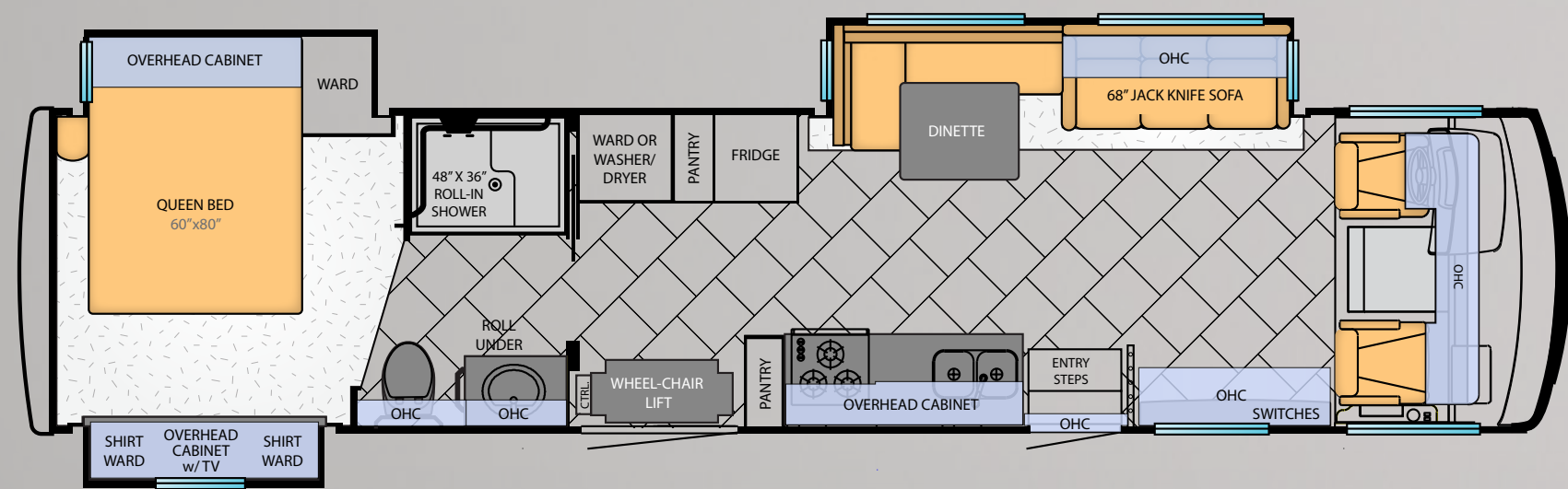
Newmar.

Where the finest names in quality and performance are along for the ride.

To assure that you experience only the best in comfort, control and unsurpassed convenience in our incomparable family of luxury coaches, Newmar partners with the most prestigious names in mobile lifestyle, entertainment and technology. These brands are leaders in their fields—and legends in providing customers with new, unsurpassed levels of quality and reliability.

Best in class performance from names you can trust. At Newmar, that's our difference. And our promise.

3911 WHEELCHAIR ACCESSIBLE



CUMMINS ONAN · Performance You Rely On™

An innovator in standby and mobile power generation for more than 80 years, Cummins Onan generators are built by Cummins Power Generation, a globally recognized name in the design and manufacture of power generation products and services.

www.cumminsonan.com



FREIGHTLINER CUSTOM CHASSIS · Driven by You

A subsidiary of Daimler Trucks North America, Freightliner Custom Chassis Corporation manufactures premium chassis that have become renowned for their exceptional ride and handling characteristics, tight turning radius and extraordinary dependability.

www.freightlinerchassis.com



Driven By You

SONY · make.believe™

One of the most comprehensive entertainment and technology companies in the world, Sony Corporation is a leading manufacturer of audio, video, communications and information technology products for consumers and professionals alike.

www.sony.com



SPARTAN CHASSIS · The Premier Foundation

Spartan Chassis is a world class leader in the design, engineering and flexible production of chassis and components that consistently deliver superior performance, exceptional safety ratings and technological innovations.

www.spartanchassis.com



EXTERIOR DESIGN & DÉCOR OPTIONS

SEA GLASS



CINNABARK



FLOORPLAN SPECIFICATIONS

Floorplan	Approx. Overall Length	Width	Approx. Overall Height	Interior Width	Interior Height	Grey	Sewage	Water	Propane	Furnace
3313	33' 11"	101.5"	12' 08"	95.5"	84"	60 gal.	40 gal.	75 gal.	25 gal.	40,000 btu
3515	35' 11"	101.5"	12' 10"	95.5"	84"	60 gal.	40 gal.	75 gal.	25 gal.	40,000 btu
3610	36' 11"	101.5"	12' 10"	95.5"	84"	60 gal.	106 gal.	75 gal.	25 gal.	40,000 btu
3810	38' 11"	101.5"	12' 10"	95.5"	84"	60 gal.	40 gal.	75 gal.	25 gal.	40,000 btu
3856	38' 11"	101.5"	12' 11"	95.5"	84"	60 gal.	40 gal.	75 gal.	25 gal.	50,000 btu
3911	39' 11"	101.5"	12' 11"	95.5"	84"	60 gal.	40 gal.	75 gal.	25 gal.	40,000 btu
3920	39' 11"	101.5"	12' 11"	95.5"	84"	60 gal.	40 gal.	75 gal.	25 gal.	40,000 btu
3940	39' 11"	101.5"	12' 11"	95.5"	84"	60 gal.	40 gal.	75 gal.	25 gal.	40,000 btu
3953	39' 11"	101.5"	12' 10"	95.5"	84"	60 gal.	78 gal.	75 gal.	25 gal.	40,000 btu

WOOD OPTIONS

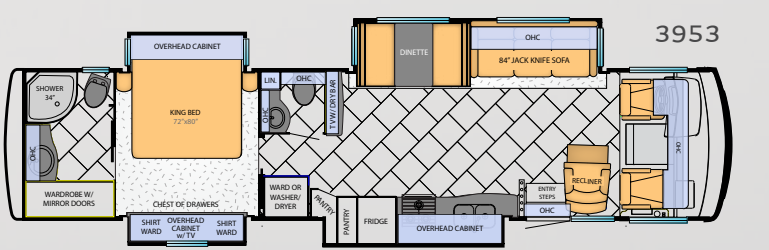
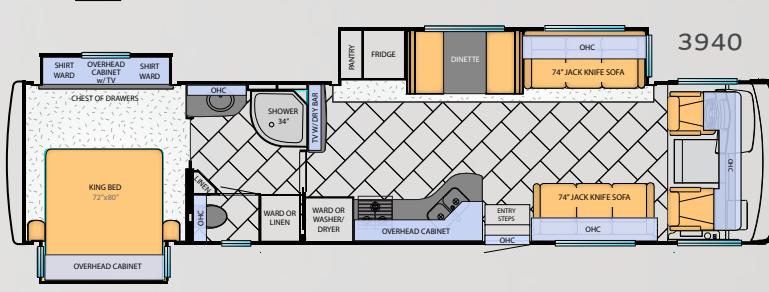
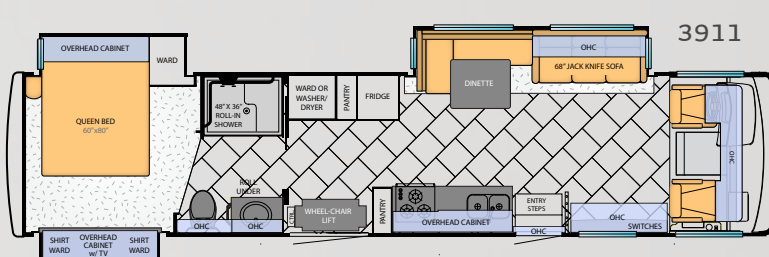
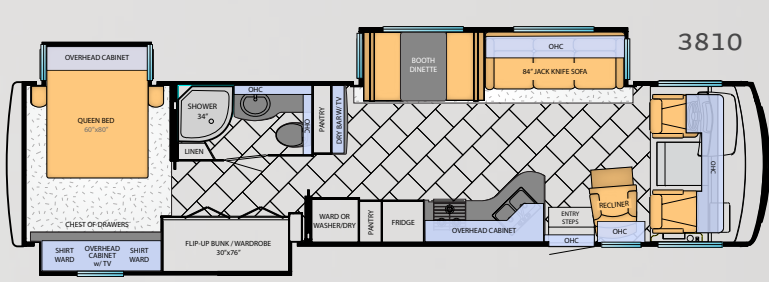
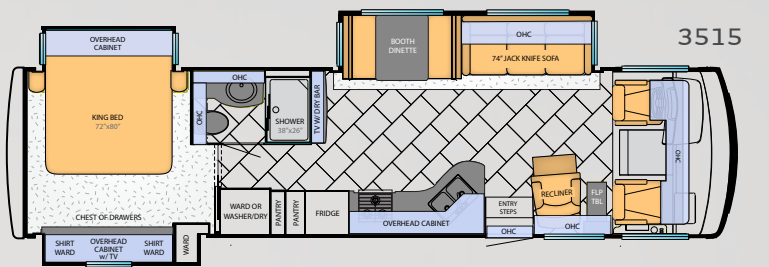
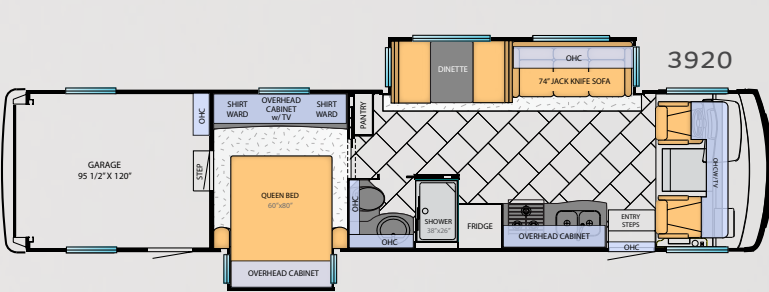
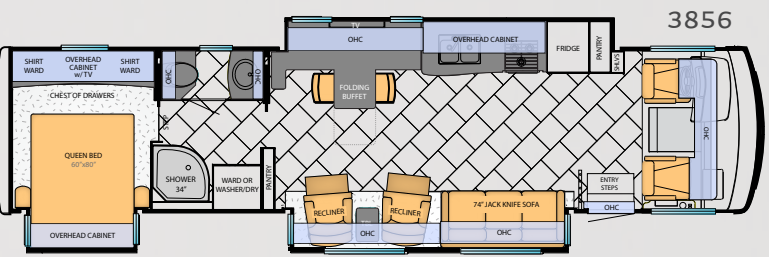
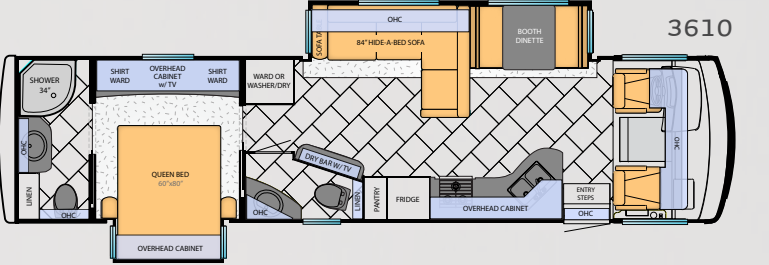
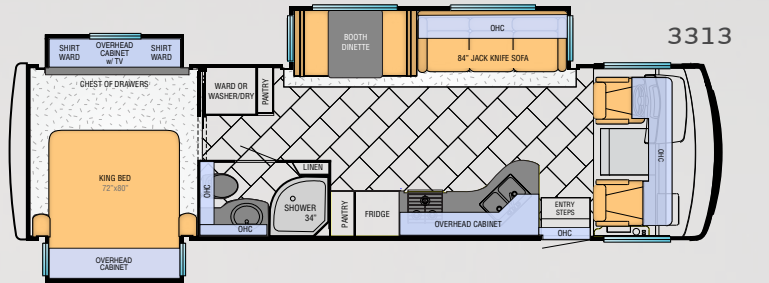


EMPIRE GLAZED
MAPLE



SIENNA GLAZED
MAPLE

FLOORPLAN OPTIONS



CONSTRUCTION & SPECIFICATIONS

Canyon Star 33', 35' and 36' coaches have a Ford® F-53 22,000 lb. chassis; 38' and 39' Canyon Star coaches have a Ford® F-53 26,000 lb. chassis. Canyon Star includes Total Comfort™ Dual In-Roof Ducting Systems and aluminum frame construction.



CHASSIS SPECIFICATIONS

Floor-plan	Engine HP	Axle Ratio	Fuel Cap.	Wheel Base	Front GAWR*	Rear GAWR*	Tag GAWR*	GVWR*	GCWR*	App. UVW	App. NCC
3315	362	5.38	80 gal.	208	8,000 lb.	15,000 lb.	0	22,000 lb.	26,000 lb.	17,742 lb.	4,258 lb.
3515	362	5.38	80 gal.	228	8,000 lb.	15,000 lb.	0	22,000 lb.	26,000 lb.	19,762 lb.	2,238 lb.
3610	362	5.38	80 gal.	234	8,000 lb.	15,000 lb.	0	22,000 lb.	26,000 lb.	19,500 lb.	2,500 lb.
3810	362	5.38	80 gal.	260	9,000 lb.	17,500 lb.	0	26,000 lb.	30,000 lb.	20,850 lb.	5,150 lb.
3856	362	5.38	80 gal.	260	9,000 lb.	17,500 lb.	0	26,000 lb.	30,000 lb.	21,250 lb.	4,750 lb.
3911	362	5.38	80 gal.	260	9,000 lb.	17,500 lb.	0	26,000 lb.	30,000 lb.	20,800 lb.	5,200 lb.
3920	362	5.38	80 gal.	266	9,000 lb.	17,500 lb.	0	26,000 lb.	30,000 lb.	20,504 lb.	5,496 lb.
3940	362	5.38	80 gal.	260	9,000 lb.	17,500 lb.	0	26,000 lb.	30,000 lb.	20,600 lb.	5,400 lb.
3953	362	5.38	80 gal.	260	9,000 lb.	17,500 lb.	0	26,000 lb.	30,000 lb.	21,120 lb.	4,880 lb.

CEILING R-VALUE = 16

- a. BriteTEK™ Roof
- b. 9mm Wood Decking
- c. Fiberglass Batten Insulation
- d. Total Comfort™ Ducted A/C
- e. Aluminum Roof Truss
- f. Kraft Paper Vapor Barrier
- g. 5/8” Bead Foam
- h. 3/16” Plywood Ceiling Panel
- i. Padded Vinyl Overlay

WALLS R-VALUE = 11

- j. 16” On-Center Aluminum Framing with 3 1/2” Header
- k. 5/8” Bead Foam
- l. Kraft Paper Vapor Barrier
- m. Fiberglass Batten Insulation
- n. Luan Backed One-Piece Composite Gelcoat Fiberglass

FLOOR R-VALUE = 11

- 1. Two 13.5M Brisk® Central Air Conditioners

- o. Carpet /Tile
- p. Carpet Padding
- q. 5/8” Floor Decking
- r. Fiberglass Batten Insulation
- s. 2”x 3” Wood Framing
- t. Polyethylene Moisture Barrier
- u. Aluminum Ducting

Lengths, heights, widths and dry weights are approximate. Weight will vary based on optional equipment added to the above base weight.

GAWR: Gross Axle Weight Rating is the maximum permissible weight for an axle.

GVWR: Gross Vehicle Weight Rating is the maximum permissible weight for a fully loaded motor coach.

GCWR: Gross Combination Weight Rating is the value specified by the manufacturer of the vehicle as the maximum allowable loaded weight of this motor coach and any towed trailer or towed vehicle.

UVW: Unloaded Vehicle Weight is the weight of this motorcoach as built at the factory with full fuel, engine oil and coolants. The UVW does not include cargo, fresh water, propane gas or dealer-installed accessories.

NCC: Net Carrying Capacity is the maximum weight of all occupants, including the driver, personal belongings, food, fresh water, waste water, propane gas, tools, tongue weight of towed vehicle, dealer-installed accessories, etc., that can be carried by the motorcoach.

*Specifications supplied by the chassis manufacturer.

CHASSIS FEATURES

- Ford® F-53 22,000-lb. Chassis on 33’ – 36’ Floorplans; Ford® F-53 26,000-lb. Chassis on 37 – 39’ Floorplans
- Hydraulic Jacks with Automatic Control
- Cruise Control
- Tilt Steering Wheel
- Coated Aluminum Wheels

AIR CONDITIONING & HEATING

- Two 13.5M Brisk® Central Air Conditioners
- Dash Heater and Air Conditioner
- Propane Leak Detector

APPLIANCES & ACCESSORIES

- 3-Burner Recessed Range with Glass Oven Door & Piezzo Ignition
- Solid Surface Range Cover
- Norcold® 8-Cu.Ft. Refrigerator
- Black Panel Refrigerator Front
- Spacemaker® Microwave Oven
- 10-Gal. Gas/Electric Water Heater with Direct-Spark Ignition
- Sony® 32” or 40” LCD TV in Living Area
- Sony® 32” LCD TV in Bedroom
- AM/FM Dash Radio with Auxiliary Jack Adapter and CD Player
- Sony® DVD Players in Living Area and Bedroom
- AM/FM Radio and Single-Disc CD Player with 2 Exterior and 2 Interior Speakers in the Garage*
- Rear View Color Monitor System with Audio
- TV Antenna with Power Booster with Two Interior Jacks
- Satellite Prep
- Cable TV Connection with RG-6 Coax
- 10-Bc Fire Extinguisher, Smoke Detector and Carbon Monoxide Detector
- Fire Extinguisher in Garage*

CABINETS & FURNITURE

- Empire Maple Cabinets with Mitered Designer Doors
- Booth Dinette with Forward Facing Seatbelts
- Solid Surface Kitchen Countertop
- Under Mounted Stainless Steel Sink and Flush Sink Covers
- Laminate Bathroom Countertop with Solid Surface Edge and Porcelain Sink
- Residential Style Full-Extension Ball Bearing Drawer Guides
- Kitchen Countertop Extension*
- Pullout Pantry*
- Flexsteel® Ultralux Leather Furniture
- Driver/Passenger Seats with 6-Way Power Driver Seat
- Lifts on Bed Top to Access Storage Area*
- Smooth Top Mattress with Quilted Bedspread and Accent Pillow
- Pullout Step Stool with Storage in Bathroom Cabinet*

ELECTRICAL FEATURES

- 5.5-kW Cummins Onan® Marquis Generator with Remote Switch and Automatic Changeover
- 50-Amp Electrical Service with Flexible Cord
- Two 12-Volt House Batteries
- Battery Disconnect Switch
- 110-Volt Exterior Receptacle
- 12-Volt Auxiliary Receptacle in Dash
- 5-Watt Solar Panel
- 55-Amp Converter
- Daytime Headlight System
- Emergency Start Switch
- Florescent Ceiling Lights Throughout
- Lighted Wardrobe
- Manually Operated Hold-To-Run Slideout Switch
- Energy Management System
- Exterior TV Jack
- ICC Light Flasher Switch
- Fog Lights

EXTERIOR FEATURES

- Full-Paint Masterpiece Finish™ with Front Protective Film
- One-Piece Windshield
- Super Storage™ Below Rear Bedroom Floor*
- Convex Exterior Mirrors with Defrost
- Entrance Door with Automatic Triple Step
- Entrance Door with Automatic Triple Step in Garage*
- Fueling Station in Garage*
- Lighted Exterior Storage Compartments with Cargo Liner and Interior Master Switch
- Rear Hitch for Towing Car with 2 Extra 14-Gauge Wires
- Acrylic Assist Handle at Entrance Door
- Undercoating
- Mud Flaps

INTERIOR FEATURES

- Padded Vinyl Ceiling
- Day/Night Pleated Window Shades and Valances
- Mini Blinds in Bathroom and Garage Area*
- Vinyl Tile Floor in Kitchen, Living Area and Bathroom
- Interior Assist Handle at Main Entrance Door
- Shoe Storage in Entrance Step Compartment
- Wraparound Windshield Privacy Shade
- Diamond Tread Rubber Flooring in Garage*
- Tie-Down Track in Garage*

PLUMBING & BATH FEATURES

- Demand Water System with SHURflo® Pump
- Sewage Holding Tank Rinse
- Water Heater Bypass System
- Thetford™ Aqua Magic Plus China Toilet with Wood Seat and Spray Attachment
- ABS Shower with Glass Enclosure
- Exterior Shower
- Water Filter for Entire Unit
- Monoplex Water Pump Switch System
- Monitor Panel

CONSTRUCTION FEATURES

- BriteTEK™ Roof with Walkable Decking
- Gelcoated Fiberglass Exterior Sides
- Gelcoated Fiberglass Front and Rear Caps
- Aluminum-Frame Sidewalls & Roof Construction, 16" on Center

WINDOWS, AWNINGS & VENTS

- Double-Pane Tinted Safety-Glass Windows
- Fantastic® Vents in Kitchen, Bathroom and Garage
- Skylight in Bathroom*
- Dometic® 9000 Plus Side Awning with Aluminum Weather Shield
- Slideout Covers

OPTIONS

AIR CONDITIONING AND HEATING

- Two 13.5M Penguin™ Heat Pump Central Air Conditioners
- 13.5M Penguin™ Air Conditioner with Heat Strip and Energy Management System in Garage*
- Auxiliary Heater in Bedroom

APPLIANCES & ACCESSORIES

- 30” Convection Microwave Oven with 3-Burner Gas Cooktop with Piezzo Ignition
- 30” Convection Microwave in Overhead Cabinet with 3-Burner Gas Cooktop*
- Norcold® 12-Cu.Ft. 4-Door Refrigerator with Icemaker
- Icemaker added to Norcold® Refrigerator
- Whirlpool® Refrigerator with Icemaker, Water Dispenser, 2000-Watt Pure Sine Inverter and six 6-Volt Batteries*
- Frigidaire® 10-Cu.Ft. Refrigerator with Dedicated 1000-Watt Pure Sine Inverter and 2 Extra Batteries*
- Whirlpool® Two-Piece Washer & Dryer in Garage*
- Whirlpool® Two-Piece Washer & Dryer Stacked in Wardrobe
- Washer/Dryer Prep for One-Piece Washer/Dryer
- Sony® Surround Sound System with Sub Woofer
- Sirius® Satellite Radio Capability (does not include monthly subscription)
- 11” Flip-Down LCD TV and DVD Player with Headphones at Each Bunk*
- Sony® 22” LCD TV at Dry Bar*
- Sony® 32” LCD TV in Front Overhead Cabinet*
- Digital TV Antenna with Power Lift*
- Automatic Satellite Dish (does not include receiver)
- High-Definition Wiring
- Central Vacuum with Deluxe Tool Kit
- Shop Vac in Garage*
- Sony® 22” LCD TV in Garage*
- Sony® 32” LCD TV in Garage*
- Exterior Entertainment Center in Sidewall with Sony® 32” LCD TV and Radio
- Side View Cameras
- Electric Fireplace*

CABINETS & FURNITURE

- Sienna Maple Glazed Cabinets
- 6-Way Power for Passenger Seat
- Hidden-Leaf Dinette Table with 4 Chairs (2 Fixed, 2 Folding) *
- Combination Desk with Buffet Dinette Table (2 Fixed, 2 Folding)*
- Round Dinette Table with 4 Chairs (2 Fixed, 2 Folding)*
- Extenda L Single Person Hide-a-Bed Sofa*
- Extenda L Sofa*
- Flexsteel® Ultralux Leather Extenda Flex Face-to-Face Dinette Desk/Dinette Table with Roll-Away Top (2 Fixed, 2 Folding)*

- Hide-A-Bed Sofa*
- Sleep Number® Deluxe Air Mattress
- Electric Bunk Beds with Removable Rug in Garage*

ELECTRICAL FEATURES

- 600-Watt Inverters for Living Area and Bedroom TVs
- 7.0-kW Onan Generator in Place of Standard*
- Halogen Ceiling Lights in Place of Florescent Lights
- 80-Amp Converter
- Solar Prep

EXTERIOR FEATURES

- Rear Ladder

INTERIOR FEATURES

- Laminate Plank Floor in Kitchen and Bathroom
- Bathroom Flooring Extended into Bedroom
- Two Wheel Chocks in Garage*
- Power-Activated Sun Visors

PLUMBING & BATH FEATURES

- 110-Volt Heat Pads for Holding Tanks
- Half Bath in Garage Area*
- Thetford® Macerator Stool*

WINDOWS, AWNINGS & VENTS

- Dometic® WeatherPro Side Awning with Weather Shield
- Kitchen Window
- Rear Window
- Driver’s Door with Power Window
- Bunk Windows*
- Screen for Rear Cargo Door*

*Check with dealership on floorplan availability and complete listing of features.

Mahlon Miller,
Newmar founder,
and Matthew Miller,
Newmar president,
lifelong motor coach
enthusiasts



Trust.

The strongest possible foundation for a motor coach.

According to Newmar president Matthew Miller, "Customers say they're loyal to us because they trust us to stand behind our products, from support, parts and service to paying our warranties. It feels good to own a coach that has all of that behind it."

How do we sustain this high level of service? At Newmar, there's a Miller way of doing things. These principles guide us every day. Courtesy. Integrity. And reliability. So when you buy from Newmar, you know that every single person who touches your coach or talks with you has your back. Period.

Gather. Where the Newmar owners are.

The Newmar Kountry Klub is an exclusive club for owners of fine Newmar products that offers many advantages and benefits to its members. Learn more at: www.newmarkountryklub.com.

NEWMAR EXPRESS LIMITED WARRANTY

Every Canyon Star Gas Motorcoach is backed by Newmar's one-year limited warranty/unlimited miles. Ask your Newmar dealer for details.

LIMITED FIVE-YEAR STRUCTURAL WARRANTY

If any part of your Newmar recreational vehicle superstructure (which is the steel/aluminum structure of the sidewall, roof or frame) fails to perform properly within five years from the date of purchase because of faulty workmanship or material supplied by Newmar, it will be repaired without charge for either parts or labor by Newmar. This structural warranty is available only to the original purchaser and is non-transferable.

Some features in our literature are optional. Colors and finishes are photographic representations. The actual materials may look different. Prices, specifications and floorplans are subject to change at Newmar's discretion, without prior notice or obligation. Please see your dealer for actual samples and specifications.



WHEN YOU KNOW THE DIFFERENCE™

NEWMAR CORPORATION

355 N DELAWARE ST
PO BOX 30
NAPPANEE IN 46550-0030
574-773-7791 Fax 574-773-2895

www.newmarcorp.com