

2013 MOUNTAIN AIRE - Luxury Motor Coach



NEWMAR CORP.



WHEN YOU KNOW THE DIFFERENCESM

2013
Mountain Aire
Luxury Motor Coach



Mountain Aire Exterior
Augusta Designer Style

2013 MOUNTAIN AIRE

Luxury Motor Coach

For generations, Mountain Aire has been a celebrated name among travelers of distinction. The 2013 edition more than lives up to the legend. The lustrous exterior will set you aglow, thanks to Newmar's Full-Paint Masterpiece™ Finish with Super Clear Coat, buffed to a mirror-like shine. Integrated awnings, recessed running lights, frameless double-pane tinted windows and molded-in headlamps are among the sleek touches that speak to its pedigree. Add to that a wealth of practical comforts and thoughtful styling, plus a Cummins® 450HP diesel engine to keep things lively, and you're always headed toward something special.

The 2013 Mountain Aire. Now there are no roads that can't be conquered. And no needs that can't be satisfied.

For those who enjoy running a tight ship.

Newmar gives the 2013 Mountain Aire every convenience a driver could wish for. Like Comfort Drive™, Newmar's enhanced steering innovation that makes light work of long trips. And integrated large screen GPS for effortless navigation. But we haven't forgotten your copilot. Both of you will enjoy heated, power adjusted Villa Furniture seats. And a front overhead Sony® 40" HDTV* will turn the miles into smiles.

Outside the Mountain Aire, the story only gets better. You have the option for another big screen Sony® HDTV media center under an exterior panel to further expand your entertainment choices. Also along for the ride: spacious, enhanced-height storage bays with easy-slide trays* for quick cargo access. With Newmar, there's always room for the extras that make life easier.

* Optional



Powerful ways to rule the road.

The Mountain Aire's Freightliner® Custom Chassis XCR with 47,000 lb GVWR is a foundation for a smooth ride – and great performance. With its Cummins® 450HP diesel, you'll have all the power you need to turn a highway into a pleasure cruise. And for ample residential-quality power, Mountain Aire features a 10K Cummins Onan® Quiet Diesel™ generator.*



FEATURES AT A GLANCE

- Full-Paint Masterpiece™ Finish with Super Clear Coat
- Nano shield front protective film
- Comfort Drive™ steering with adjustable control
- VORAD® adaptive cruise system
- Cummins Onan® Quiet Diesel™ generator
- Freightliner® Custom Chassis XCR 47,000 lb. GVWR chassis



Cummins **Onan**



* Optional



Mountain Aire Interior
Augusta Decor Scheme with Manhattan Glazed Maple
Cabinetry in Floorplan # 4344

All the comforts of home. All the craftsmanship of Newmar.

There's nothing quite like the welcome you feel when you enter the interior of the 2013 Mountain Aire. Suddenly, you're in an eminently livable space with all the scope, all the style and all the possibilities that you can imagine. The polished floor suggests an area rug rendered in tile and surrounded by the plush comfort of Villa Furniture sofas and seating areas. Glazed hardwood cabinetry, handcrafted by Newmar artisans, makes your kitchen as handsome as any residential space. The centerpiece? An all-new, full mosaic tile backsplash accented with stone, glass and marble.

Backlit hardwood fascia completes the picture of a relaxing place where you can comfortably entertain company. Or better still, simply enjoy each other's.

Residential quality. It's a fixture with us.

Newmar has outfitted the 2013 Mountain Aire with the finest in residential-style appliances and amenities, from its kitchen fixtures like a convenient pull-down sprayer to its solid surface countertops and handsome, longer-pull cabinet hardware.



FEATURES AT A GLANCE

- Polished solid surface countertops in kitchen, bath and bedroom
- Villa Ultra Leather furniture
- Manhattan Maple glazed hardwood unitized cabinets
- Girard® power awning on windows, entrance door and slideout covers





Where specials are the only thing on the menu.

With Mountain Aire, you can entertain any leisure possibility. Not to mention any number of friends. Pull up a cozy residential-style chair to the dinette table. No worries. It seats four comfortably. During meals, feel free to gaze out from one of the cabin's large picture windows – through Power Duo shades*. Or choose a window to a world of excitement with your integrated Sony® 32" LED HDTV. The lights and shades go down on command, thanks to the multiplex control panel – and your movie snacks are as close as the adjacent pull-out mobile island. Applause, applause!

FEATURES AT A GLANCE

- Sony® 40" LED HDTV
- Power duo day/night privacy window shades
- Hidden-leaf dinette table with four chairs
- Pullout mobile island kitchen base cabinet
- Residential refrigerator with icemaker and water dispenser

SONY®

* Optional

It does everything but tuck you in.

Experience the roomy luxury of the Mountain Aire master bedroom and it's hard to tell if you're awake or dreaming. You are surrounded by Newmar craftsmanship and attention to detail, from its leather-feel headboard accented by scrolled hardwood to its canopy style overhang with atmosphere lighting. Slip under the home-like comforter and accent pillows of its king size Sleep Number® Bed.* Then add the perfect nightcap: an evening of entertainment from your Sony® 40" bedroom HDTV and DVD. Sleep tight.

More storage than in any other offering from Newmar.

The 2013 Mountain Aire is nothing if not smartly designed. Everywhere you look, you'll find extra room and ingeniously functional storage created expressly to match your needs.



FEATURES AT A GLANCE

- Sony® 40" LED HDTV with DVD
- King bed with Sleep Number® control mattress
- Multiplex lighting control system

SONY®

*Optional





FEATURES AT A GLANCE

- Radius shower with optional teak seating*
- Polished porcelain floor tile in kitchen, bathroom and living areas
- Demand water system
- Recessed mood lighting in ceiling, window treatments and bed base

An ideal marriage of style and function.



The 2013 Mountain Aire literally showers you with thoughtful amenities and practical design touches. Case in point: a master bath featuring a standard size radius shower with solid surface walls*, residential-style fixtures and optional teak seating. Its polished hardwood vanity includes tile backsplashes that complement its artful kitchen. With a refreshing skylight, day/night shades for convenient privacy, and an extra half bath for guests, you soon understand the differences that put Newmar in a class by itself.

Elegance that performs flawlessly.

Mountain Aire stands at the crossroads where beauty and function intersect, integrated into a stunning design with the precise balance of power and utility you need to go any distance in comfort and style.

CUMMINS ONAN • *Performance You Rely On™*

An innovator in standby and mobile power generation for more than 80 years, Cummins Onan generators are built by Cummins Power Generation, a globally recognized name in the design and manufacture of power generation products and services.

www.cumminsonan.com

FREIGHTLINER CUSTOM CHASSIS • *Driven by You*

A subsidiary of Daimler Trucks North America, Freightliner Custom Chassis Corporation manufactures premium chassis that have become renowned for their exceptional ride and handling characteristics, tight turning radius and extraordinary dependability.

www.freightlinerchassis.com

SONY • *make.believe™*

One of the most comprehensive entertainment and technology companies in the world, Sony Corporation is a leading manufacturer of audio, video, communications and information technology products for consumers and professionals alike.

www.sony.com

SPARTAN CHASSIS • *The Premier Foundation*

Spartan Chassis is a world class leader in the design, engineering and flexible production of chassis and components that consistently deliver superior performance, exceptional safety ratings and technological innovations.

www.spartanchassis.com

Newmar.

Where the finest names in quality and performance are along for the ride.

To assure that you experience only the best in comfort, control and unsurpassed convenience in our incomparable family of Luxury Coaches, Newmar partners with the most prestigious names in mobile lifestyle, entertainment and technology. These brands are leaders in their fields—and legends in providing customers with new, unsurpassed levels of quality and reliability.

Best in class performance from names you can trust. At Newmar, that's our difference. And our promise.



Mahlon Miller, Newmar founder, and Matthew Miller, Newmar president, lifelong motor coach enthusiasts

Gather.

Where the Newmar owners are.

The Newmar Kountry Klub is an exclusive club for owners of fine Newmar products that offers many advantages and benefits to its members. Learn more at: www.newmarkountryklub.com

Trust.

The strongest possible foundation for a motor coach.

According to Newmar president Matthew Miller, “Customers say they're loyal to us because they trust us to stand behind our products, from support, parts and service to paying our warranties. It feels good to own a coach that has all of that behind it.”

How do we sustain this high level of service? At Newmar, there's a Miller way of doing things. These principles guide us every day. Courtesy. Integrity. And reliability. So when you buy from Newmar, you know that every single person who touches your coach or talks with you has your back. Period.



WHEN YOU KNOW THE DIFFERENCE

EXTERIOR DESIGN & DÉCOR OPTIONS

AUGUSTA



BAYSIDE



WOODCREST



PEMBROKE



WOOD OPTIONS



SABLE MAPLE



MANHATTAN
GLAZED MAPLE

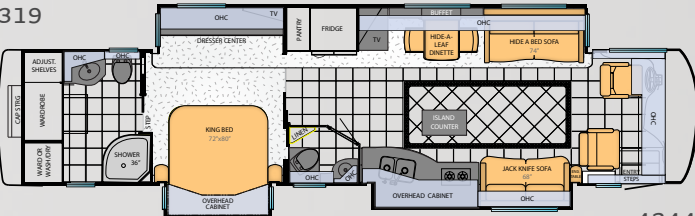
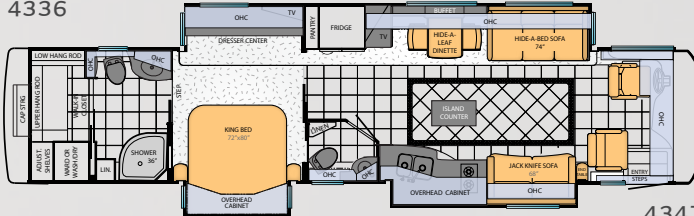
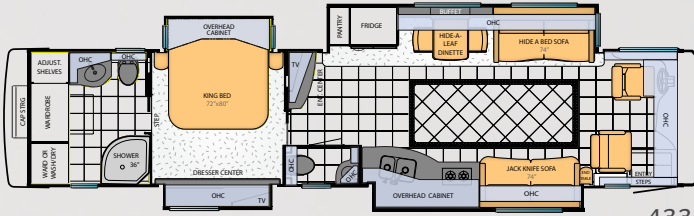
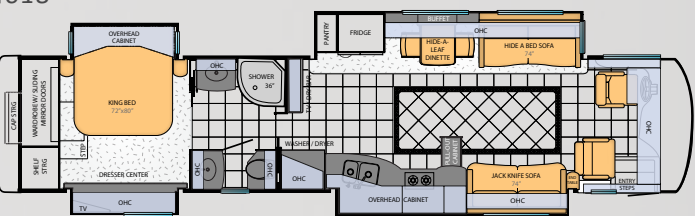
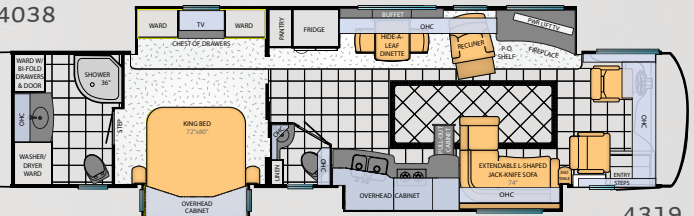
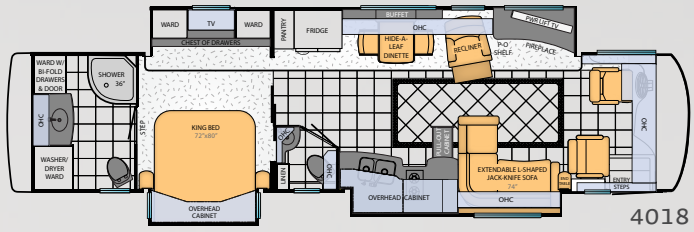
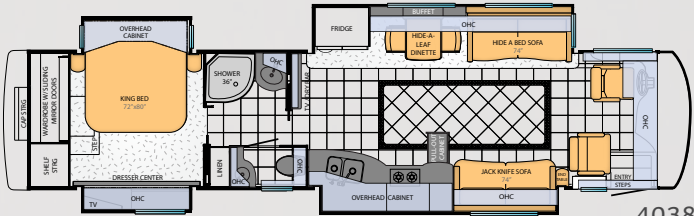


WICKER GLAZED
MAPLE



CARMEL GLAZED
CHERRY

FLOORPLANS OPTIONS



Floor Plan	App. Overall Length	Width	App. Overall Height	Interior Width	Interior Height	Grey	Sewage	Water	Propane	Furnace
4018	40' 09"	101.5"	12' 9"	95.5"	84"	65 gal.	45 gal.	105 gal.	32 gal.	50,000 btu
4038	40' 09"	101.5"	12' 9"	95.5"	84"	65 gal.	45 gal.	105 gal.	32 gal.	50,000 btu
4314	42' 09"	101.5"	12' 9"	95.5"	84"	65 gal.	45 gal.	105 gal.	32 gal.	50,000 btu
4319	42' 09"	101.5"	12' 9"	95.5"	84"	65 gal.	45 gal.	105 gal.	32 gal.	50,000 btu
4336	42' 09"	101.5"	12' 9"	95.5"	84"	65 gal.	45 gal.	105 gal.	32 gal.	50,000 btu
4344	42' 09"	101.5"	12' 9"	95.5"	84"	65 gal.	45 gal.	105 gal.	32 gal.	50,000 btu
4347	42' 09"	101.5"	12' 9"	95.5"	84"	65 gal.	45 gal.	105 gal.	32 gal.	50,000 btu

CONSTRUCTION & SPECIFICATIONS

The Freightliner® Custom Chassis XCR’s strong chassis with 50,000 PSI frame rail provides Mountain Aire with a solid, confident foundation. This – and Mountain Aire’s GVWR of 47,000 pounds, with a 10,000 pound tag axle, allows Mountain Aire to expand beyond its chassis footprint, creating extra living space. Its Cummins® ISL 450 HP engine gives you incredible maneuverability and power, even on steep inclines. And if you should ever need it, Newmar’s roadside assistance program is in place for the entire warranty period.



CHASSIS SPECIFICATIONS

Floor-plan	Engine HP	Axle Ratio	Fuel Cap.	Wheel-base	Front GAWR*	Rear GAWR*	Tag GAWR*	GVWR*	GCWR*	App. UVW	App. NCC
4018	450	4.63	150	276+TAG	17,000 lb	20,000 lb	10,000 lb	47,000 lb	62,000 lb	35,900 lb	11,100 lb
4038	450	4.63	150	252+TAG	17,000 lb	20,000 lb	10,000 lb	47,000 lb	62,000 lb	35,300 lb	11,700 lb
4314	450	4.63	150	276+TAG	17,000 lb	20,000 lb	10,000 lb	47,000 lb	62,000 lb	35,800 lb	11,200 lb
4319	450	4.63	150	252+TAG	17,000 lb	20,000 lb	10,000 lb	47,000 lb	62,000 lb	35,500 lb	11,500 lb
4336	450	4.63	150	276+TAG	17,000 lb	20,000 lb	10,000 lb	47,000 lb	62,000 lb	34,750 lb	12,250 lb
4344	450	4.63	150	276+TAG	17,000 lb	20,000 lb	10,000 lb	47,000 lb	62,000 lb	35,700 lb	11,300 lb
4347	450	4.63	150	276+TAG	17,000 lb	20,000 lb	10,000 lb	47,000 lb	62,000 lb	36,000 lb	10,000 lb

ROOF R-VALUE = 19

- a. Fiberglass Roof
- p. Fiberglass Batten Insulation
- c. A/C Ducting
- d. Aluminum Rafter Framing
- e. Kraft Paper Vapor Barrier
- f. 5/8” Bead Foam
- g. 3/16” Panel
- h. Padded Vinyl Overlay

FLOOR R-VALUE = 16

- o. Carpet/Tile
- p. Carpet Padding
- q. 5/8” Floor Decking
- r. Fiberglass Batten Insulation
- s. 2”x 3” Wood Framing
- t. Polyethylene Moisture Barrier

SIDEWALL R-VALUE = 11

- i. 3/16” Plywood Interior Wall
- j. 5/8” Bead Foam
- k. Kraft Paper Vapor Barrier
- l. Fiberglass Batten Insulation
- m. Composite One-Piece Gelcoat Exterior Sidewall
- n. Aluminum Framing with 3 1/2” Header Above

BASEMENT R-VALUE = 4

- u. Cargo Liner
- v. 3/8” Floor Decking
- w. 3/16” Luan Panel
- x. 1 1/2” Bead Foam
- y. Aluminum Sheeting with Steel Support Rails to Prevent Bowing and Flexing

- 1. 15M Penguin™ Heat Pump Central Air Conditioners
- 2. One-Piece Bonded Windshield
- 3. Coated Aluminum Wheels
- 4. Frameless, Double-Pane, Tinted Safety Glass Windows
- 5. Side-Hinged Baggage Doors with Optional Storage Tray

Lengths, heights, widths and dry weights are approximate. Weight will vary based on optional equipment added to the above base weight.

GAWR: Gross Axle Weight Rating is the maximum permissible weight for an axle.

GVWR: Gross Vehicle Weight Rating is the maximum permissible weight for a fully loaded motor coach.

GCWR: Gross Combination Weight Rating is the value specified by the manufacturer of the vehicle as the maximum allowable loaded weight of this motor coach and any towed trailer or towed vehicle.

UVW: Unloaded Vehicle Weight is the weight of this motorcoach as built at the factory with full fuel, engine oil and coolants. The UVW does not include cargo, fresh water, propane gas or dealer-installed accessories.

NCC: Net Carrying Capacity is the maximum weight of all occupants, including the driver, personal belongings, food, fresh water, waste water, propane gas, tools, tongue weight of towed vehicle, dealer-installed accessories, etc., that can be carried by the motorcoach.

*Specifications supplied by the chassis manufacturer.

CHASSIS FEATURES

- Freightliner® Custom Chassis XCR with 450HP Cummins® ISL on 40’ Floorplans
- Freightliner® Custom Chassis Tag Axle with 450HP Cummins® ISL on 43’ Floorplans
- Two-Stage Engine Compression Brake
- Adjustable Pedals
- Tag Axle
- Accuride® ACCU-SHIELD™ Aluminum Wheels
- Anti-Lock Braking System
- Cruise Control
- Electronic Chassis Information in Display in Dash
- Anti-Lock Braking System
- Hydraulic Leveling Jacks with Single Touch Control
- Comfort Drive™ Steering With Adjustable Control
- Recessed Fuel Fills with Crossover to Fill from Either Side

APPLIANCES & ACCESSORIES

- Polished Solid Surface Range Cover
- Norcold® 12 Cu. Ft. 4-Door Refrigerator with Icemaker and Water Dispenser
- Compact One-Piece Washer/ Dryer Prep
- TV on Power Lift in Living Area*
- Sony® LCD TV and DVD Player in Living and Bedroom Areas*
- AM/FM Dash Radio with CD Player and Auxiliary Jack for MP3 Player
- Rearview Color Monitor System with Audio
- Microwave 30” Convection with Two-Burner Recessed Gas Cooktop
- Sony® Surround Sound System with Audio
- Roof Mounted Digital TV Antenna with Power Booster
- High Definition Component Wiring
- Infra Red Reapter System to Operate Audio/Video Components
- Fireplace in Living Room Area*
- Air Horns

*Check with dealership on floorplan availability and complete listing of features.

AIR CONDITIONING & HEATING

- Two 15M Penguin™ Heat Pump Central Air Conditioners
- Hydronic Zone Heating System
- Propane Gas Leak Detector
- Roof Air Conditioning Drainage System

CABINETS & FURNITURE

- Sable Maple Hardwood Cabinets with Concealed Hinges and Full Overlay Double Cathedral Doors
- Pullout Pantry Shelves*
- Residential Style Full Extension Ball Bearing Drawer Guides
- Hidden-Leaf Dinette Table with Four Chairs (Two Fixed, Two Folding)
- Polished Solid Surface Countertop in Kitchen, Bath, and Bedroom Areas
- Pullout Mobile Island Kitchen Base Cabinet With Polished Solid Surface Countertop*
- Villa Ultra Leather Furniture*
- Ultralux Leather Driver/Passenger Seats with Six-Way Power and Lumbar Support with Footrest on Oversized
- Passenger Seat
- Cedar Paneling in Bedroom Wardrobe
- King Size Bed with Radius Corner Mattress, Quilted Bedspread and Accent Pillows

ELECTRICAL FEATURES

- 8.0-kW Cummins Onan® Quiet Series Diesel Generator on Slideout Tray
- 50-Amp Electrical Service with Flexible Cord
- Four 6-Volt House Batteries
- Energy Management System
- NewPlex™ Wiring System
- 2800-Watt Inverter
- Midship Side Turn Signals
- Recessed Docking Lights
- Halogen Lights Recessed in Ceiling and Overhead Cabinets
- Lighted Wardrobe
- ICC Light Flasher Switch
- Battery Disconnect Switch

- Mood Lighting Recessed in Feature Ceiling, Window Treatments, Kitchen Toe Kick and Bed Base
- Solar Prep
- Power Cord Rewind Reel
- Prewired for Freezer

PLUMBING & BATH FEATURES

- Fiberglass Shower with Glass Door
- Water Filter for Entire Unit
- Demand Water System
- Thetford™ Aqua Magic Style Plus China Bowl in Center Bathroom
- Thetford™ Macerator Stool in Rear Bathroom Floorplans

WINDOWS, AWNINGS, & VENTS

- Frameless Double-Pane Tinted Safety-Glass Windows
- Fan-Tastic® Vent with Rain Sensor in Kitchen Area and Bathroom
- Shower Skylight
- Girard® Power Awning on Windows, Entrance Door and Slideout Covers
- Girard® Power Side Awning with Wind Sensor and Remote Control
- One-Piece Tinted Windshield

INTERIOR FEATURES

- Front Entrance Door with Power Stepwell Cover
- Power Activated Sun Visors
- Power Shade for Windshield
- Hardwood Fascia on Living Area Slideouts and Window Sills
- Polished Porcelain Floor Tile in Kitchen, Bathroom and Living Areas
- Polished Solid Surface Backsplash with Tile Accents in Kitchen and Bath
- Carpeting in Living and Bedroom Areas
- Hardwood Raised Panel Interior Passage Doors
- Lined Day/Night Pleated Window Shades and Lambrequins
- Manual Day/Night Shades for Driver & Passenger Side Windows
- Padded Vinyl Ceiling with Feature Panels
- Shoe Storage Shelves Recessed into Rear Cap Wardrobe

EXTERIOR FEATURES

- Full-Paint Masterpiece™ Finish With Super Clear Coat and Nano Shield Front Protective Film
- Chrome Convex Exterior Mirrors with Remote Control, Defrost, Turn Signal Indicators and Sideview Cameras
- Power Flush Stepwell Cover
- Power Locking Baggage Doors
- Keyless Entry with Door Bell and Touch Pad
- Rear Hitch for Towing Car
- Assist Handle at Entrance Door
- Stainless Steel Kick Panel at Entrance Door
- Rear Protective Tow Guard with Stainless Steel Newmar Name Cutout
- Exterior Storage Compartments Finished with Cargo Liner
- Mud Flaps
- Chrome Trim Package

CONSTRUCTION FEATURES

- Mechanical Lock Arms on All Slideout Rooms
- Fiberglass Roof with Walkable Decking
- Power Baggage Door Locks & Keyless Entrance Door with Touch Pad
- Aluminum Frame Sidewalls & Roof Construction, 16” on Center
- 5/8” Foam Insulation Laminated in Sidewalls & Ceiling

OPTIONS

CHASSIS FEATURES

- TripTek™ Electronic Travel Information (Displayed on Rearview Monitor)
- VORAD® Adaptive Cruise System

AIR CONDITIONING & HEATING

- Extra 15M Penguin™ Heat Pump Central Air Conditioner with 10.0 kW Onan® Generator*
- Electric Heat under Floor Tile in Kitchen, Bath and Living Areas

APPLIANCES & ACCESSORIES

- Dometic® Freezer on Pullout Tray
- Whirlpool® Two-Piece Washer/ Dryer Stacked in a Full Height Wardrobe
- All Electric-Maytag® Refrigerator, 2-Burner Cooktop & 4 Extra Batteris
- All-Electric Whirlpool® Refrigerator, 2-Burner Cooktop & 4 Extra Batteries
- Maytag® Refrigerator with Icemaker, Water Dispenser & 2 Extra Batteries
- Whirlpool® Refrigerator with Icemaker, Water Dispenser & 2 Extra Batteries
- Residential Refrigerator with Icemaker and Water Dispenser
- Fisher Paykel Dishdrawer®
- Sony® 40” LCD TV in Front Overhead Cabinet*
- Sony® 46” LED TV on Power Lift Behind Door Side Non-Sleeper Fixed
- Sirius Satellite Radio Capability (Does not include monthly subscription)
- Dash Radio with Portable TomTom® Navigation System
- Universal Remote Control
- Exterior Entertainment Center in Sidewall with Sony® 40” LCD TV and Sony® AM/FM Radio and CD Player
- Exterior Entertainment Center Located in Storage Compartment with 32” Sony® LCD TV and Sony® AM/FM Radio and CD Player*
- Satellite Dish with High Definition Converter
- Central Vacuum with Deluxe Tool Kit
- Dyson® Hand Held Vacuum

CABINETS & FURNITURE

- Carmel Glazed Cherry Hardwood Cabinets
- Manhattan Glazed Maple Hardwood Cabinets
- Wicker Glazed Maple Hardwood Cabinets
- Extenda L Sofa on Door Side or Off Door Side
- Villa Ultralux Leather Euro Face-to-Face Dinette & 2 Folding Chairs
- Villa Ultralux Leather Extenda Flex Face-to-Face Dinette & 2 Folding Chairs
- Sofa with Air Mattress*
- Combination Desk/Dinette Table with Two Fixed and Two Folding Chairs
- Sleep Number® Premier Air Mattress for Main Bed

ELECTRICAL FEATURES

- 8 Agm House Batteries Available Only with the All Electric Option
- LED Light Bulbs in Place of Halogen Bulbs

EXTERIOR FEATURES

- Large Storage Tray with Access from One Side or Either Side*
- Large Storage Tray*
- Power Sliding Storage Tray*

INTERIOR FEATURES

- Polished Porcelain Floor Tile Extended Into Bedroom Area
- Power Duo Day/Night Window Shades (Windshield and Driver/ Passenger Side Windows)
- Power Silhouette Window Shades
- Safe Located in Bedroom Wardrobe

PLUMBING & BATH FEATURES

- Solid Surface Shower Pan and Shower Walls
- Fold-Down Shower Seat
- Bathtub in Place of Shower
- RV Sanicon System
- Automatic Fill for Fresh Water Tank

WINDOWS, AWNINGS, & VENTS

- Additional Girard® Power Side Awning with Wind Sensor and Remote Control
- Driver’s Side Power Window

NEWMAR EXPRESS LIMITED WARRANTY

Every Mountain Aire Diesel Pusher is backed by Newmar's one-year limited warranty/unlimited miles. Ask your Newmar dealer for details.

LIMITED FIVE-YEAR STRUCTURAL WARRANTY

If any part of your Newmar recreational vehicle superstructure (which is the steel/aluminum structure of the sidewall, roof or frame) fails to perform properly within five years from the date of purchase because of faulty workmanship or material supplied by Newmar, it will be repaired without charge for either parts or labor by Newmar. This structural warranty is available only to the original purchaser and is non-transferable.

Some features in our literature are optional. Colors and finishes are photographic representations. The actual materials may look different. Prices, specifications and floorplans are subject to change at Newmar's discretion, without prior notice or obligation. Please see your dealer for actual samples and specifications.



WHEN YOU KNOW THE DIFFERENCE™

NEWMAR CORPORATION

355 N DELAWARE ST
PO BOX 30
NAPPANEE IN 46550-0030
574-773-7791 Fax 574-773-2895

www.newmarcorp.com