



2015

KING AIRE

LUXURY MOTOR COACH



WHEN YOU KNOW THE DIFFERENCE SM

A ROYAL WAY TO RIDE

GETTING TO THE TOP IS NEVER EASY. But once you're there, you can savor the rewards. Like the experience of riding the crest of comfort embodied by the 2015 King Aire. This is Newmar quality at its finest, in a roomy and powerful traveling companion that offers all the amenities of home, and then some. It all starts with a dazzling exterior, highlighted by all-new

graphic choices and protected from the elements by Newmar's signature Full-Paint Masterpiece™ Finish. And any road is within reach when you can harness the power of a 600HP turbo diesel from Cummins, riding on a custom-built passive-steer tag axle Spartan® K3 chassis. So climb aboard and enjoy the view from the incomparable new King Aire. It only gets better from here.

“

A layout built for
luxury.”

KING AIRE



NEWMAR



2015 KING AIRE

Where Will It Take You?

Safety may be the most valuable luxury. Which is why King Aire employs features like Newmar's Comfort Drive™ Steering that allows easy maneuverability with just a light grip on the wheel, as well as an optional Safety Cruise collision avoidance based on Vorad® adaptive technology to help navigate safely through adverse weather and detect potential blind spot hazards.

- Full-Paint Masterpiece™ Finish with super clear coat
- Spartan® K3 Tag Axle Chassis with 600HP Cummins ISX Engine
- Comfort Drive™ Steering with power control
- Cummins Onan® Quiet Diesel™ Generator



WHEN YOU KNOW THE DIFFERENCE SM









FLORENCE DÉCOR STYLE AND SABLE MAPLE CABINETRY - FLOORPLAN 4553



BREATHTAKING VIEWS, DESIGNED FOR YOU

The interior of the 2015 King Aire puts you in the midst of Newmar's most well-appointed residential décor, with fine furniture from Villa, custom lighting, polished porcelain floor tile, a stunning new fascia design accented with chrome insets and an overall atmosphere of comfortable elegance.

Exquisite entertainment is also along for the ride, with a 48" Sony® HDTV system revealed on command via televator lift and controlled from the multi-function Sony® Z-Pad tablet

- Sony® 48" LED HDTV on televator*
- Villa Sofa/Euro Booth dinette ensemble with powered adjustable table*
- Power duo day/night privacy window shades
- Sony® tablet with Silverleaf® multiplex control app

*Optional





“

A recipe for
perfection.”

SEASONED WITH STYLE

Imagine the options for entertaining when you have a kitchen as well designed as the King Aire. Newmar's exquisitely crafted cabinetry newly gleams with chrome-finished hardware, the perfect complement to the array of residential-class appliances that make cooking and clean-up a breeze.

The dual sink with glass inlay backsplash now features the convenience of a Delta Touch Faucet that turns on and off with a simple tap—perfect for those times when your hands are full.

- Polished solid surface countertops in kitchen, bathroom and bedroom
- Hardwood Sable Maple high gloss unitized cabinets
- Delta Touch Faucet in kitchen
- Polished porcelain floor tile in living areas



“

A splendid sanctuary with every comfort you would expect from Newmar.”



UNWIND IN LAVISH FASHION

Every day ends well when the destination is the King Aire master bedroom. The king size Sleep Number® bed puts you in control of your comfort beneath a plush, paneled headboard and overhead LED lighting that lets you set any mood at the touch of a button.

Across the room, chrome accented dressers offer more than ample storage and act as a handsome backdrop to an entertainment center featuring a Sony® 40" LED TV with Blu-Ray® DVD and Bose® Solo sound bar.

- King size bed with Sleep Number® control mattress
- Sony® 40" LED HDTV with Blu-Ray® player
- Bose® Solo TV sound system
- Accent lights in ceiling, lambrequins, kitchen, bed base, fascia trim and dash

SONY®





MUCH MORE THAN THE BARE ESSENTIALS

The King Aire's master bath sets new standards for how luxurious life on the road can be. The home-like space is highlighted by a gorgeous vanity that boasts twin vessel sinks, chrome-finished hardware, solid surface counters and a spacious 40" x 32" shower with multiple body sprays.

The look of custom-made glass and metal tile shower walls is even carried into the design of the coach's versatile half-bath, perfect for visiting guests and family.

- Polished shower walls with floor-to-ceiling tiling
- Demand water system with Aquajet™ "ES" pump
- Multiple spray shower with handheld shower head
- Electric heat under floor tile*

*Optional





“

King Aire sets new standards for a luxurious life on the road.”





VENICE EXTERIOR - FLOORPLAN 4553



FORTUNE FAVORS THE BOLD

With King Aire, Newmar overlooks no detail in the quest for ultimate quality. Whether it's the lighted Girard® NOVA power awnings that create an inviting venue for an exterior Sony® HDTV system. Or new high-end JBL audio in the cockpit area. Or LED illumination for the power-assisted, enhanced height cargo compartments.

There's a reason we call it King Aire. Because those who choose to own it are in for a majestic experience.

- Villa Ultra Leather/Vinyl heated driver and passenger seats with optional massage feature
- Rear docking lights to assist tow vehicle hookup at night
- Exterior entertainment center with Bluetooth-compatible sound bar
- Two piece stacked washer and dryer



EXTERIOR DECOR



VENICE EXTERIOR



POPPY EXTERIOR



TORINO EXTERIOR

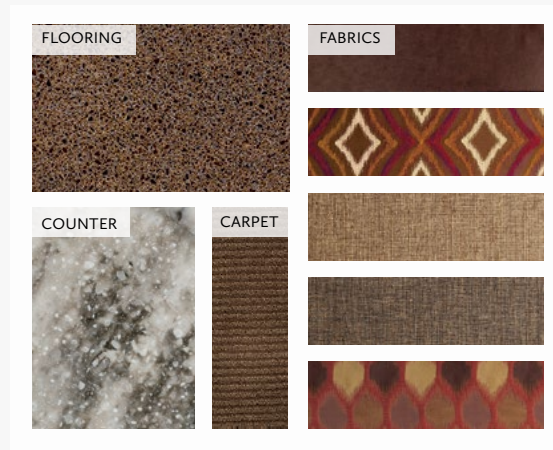


CORDOVA EXTERIOR

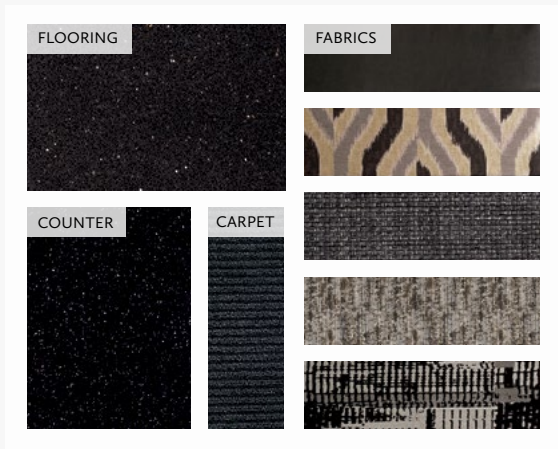
INTERIOR DECOR



FLORENCE INTERIOR



VOLARE INTERIOR



MONTEGO INTERIOR



AVERY INTERIOR

WOOD OPTIONS



RATTAN GLAZED
MAPLE



AMARETTO GLAZED
MAPLE

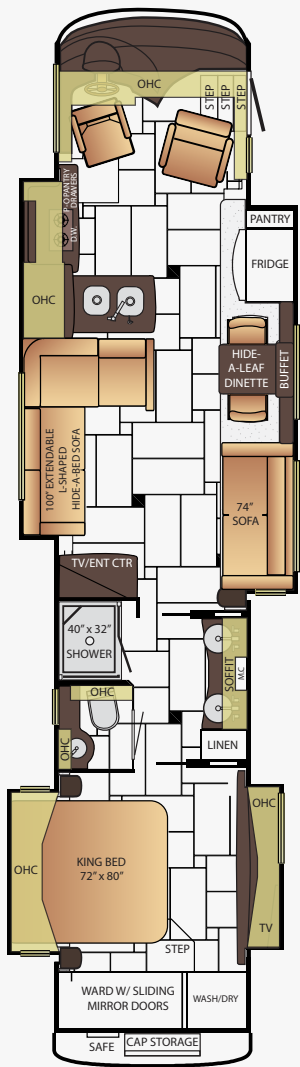


GINGER GLAZED
CHERRY



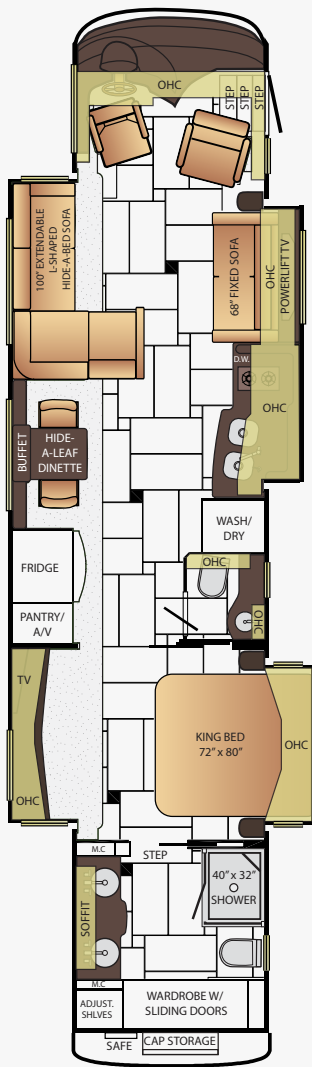
SABLE MAPLE

FLOOR PLANS



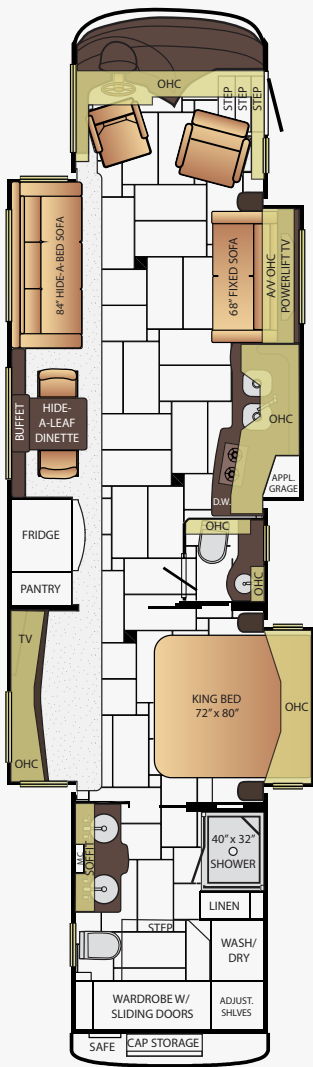
4501

App. Overall Length	44'11"
Width	101.5"
App. Overall Height	13'4"
Interior Width	95.5"
Interior Height	84"
Grey Tank	80 gal.
Sewage Tank	60 gal.
Water Tank	140 gal.
Propane Tank	22 gal.
Furnace	50,000 btu



4503

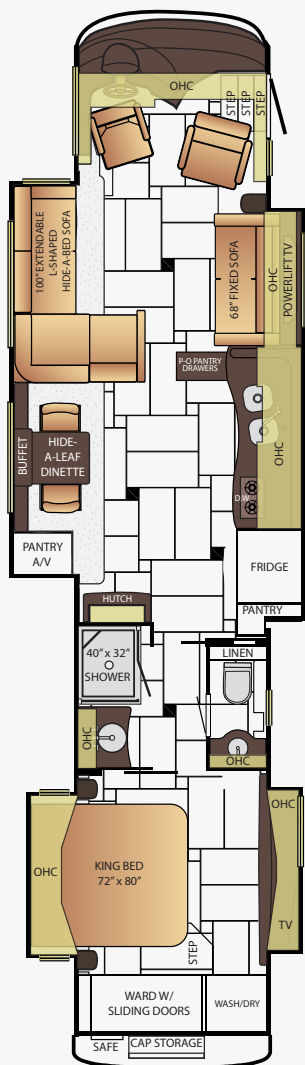
App. Overall Length	44'11"
Width	101.5"
App. Overall Height	13'4"
Interior Width	95.5"
Interior Height	84"
Grey Tank	80 gal.
Sewage Tank	60 gal.
Water Tank	140 gal.
Propane Tank	22 gal.
Furnace	50,000 btu



FLOOR PLANS

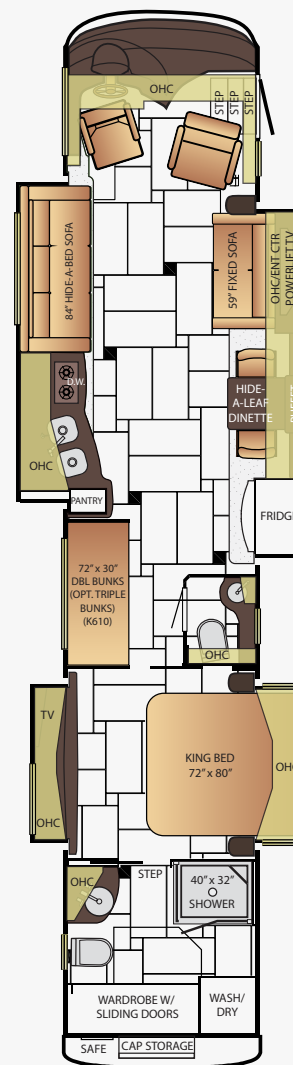
4553

App. Overall Length	44'11"
Width	101.5"
App. Overall Height	13'4"
Interior Width	95.5"
Interior Height	84"
Grey Tank	80 gal.
Sewage Tank	60 gal.
Water Tank	140 gal.
Propane Tank	22 gal.
Furnace	50,000 btu



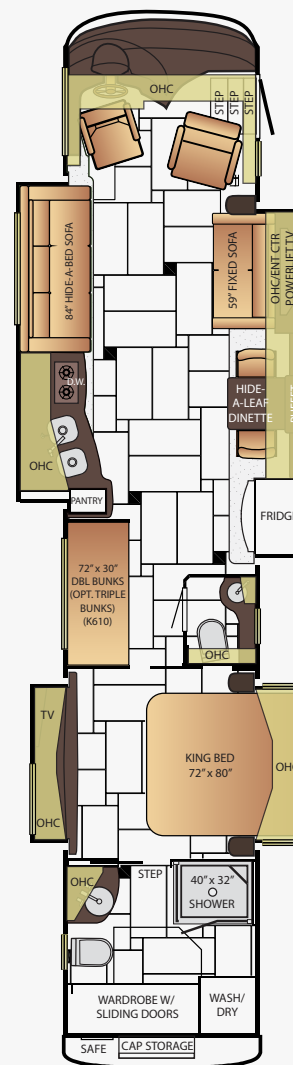
4568

App. Overall Length	44'11"
Width	101.5"
App. Overall Height	13'4"
Interior Width	95.5"
Interior Height	84"
Grey Tank	80 gal.
Sewage Tank	60 gal.
Water Tank	140 gal.
Propane Tank	22 gal.
Furnace	50,000 btu



4599

App. Overall Length	44'11"
Width	101.5"
App. Overall Height	13'4"
Interior Width	95.5"
Interior Height	84"
Grey Tank	80 gal.
Sewage Tank	60 gal.
Water Tank	140 gal.
Propane Tank	22 gal.
Furnace	50,000 btu



CONSTRUCTION & CHASSIS SPECIFICATIONS



Comfort Drive[™]
STEERING

LIKE A FINE HOME, King Aire is framed 16 inches on center, allowing the best placement of outlets, switches and other components. Newmar uses only Sikaflex elastic adhesive throughout King Aire's construction – one of the strongest bonding agents available. It seals against air and

water and helps dampen sound and vibration. Electrical wiring holes in King Aire's aluminum frame are ringed with plastic grommets to protect wires from chafing. And Newmar's Total Comfort™ Central Air is two separate, fully ducted systems that distribute cool air and remove warm air.

ROOF R-VALUE = 24

- a. Fiberglass Roof
- b. Fiberglass Batten Insulation
- c. A/C Ducting
- d. Aluminum Rafter Framing
- e. Kraft Paper Vapor Barrier
- f. 5/8" Bead Foam
- g. 3/16" Panel
- h. Padded Vinyl Overlay

SIDEWALL R-VALUE = 11

- i. 3/16" Plywood Interior Wall
- j. 5/8" Bead Foam
- k. Kraft Paper Vapor Barrier
- l. Fiberglass Batten Insulation
- m. 3/16" Plywood Exterior Wall
- n. Composite One-Piece Gelcoat Exterior Sidewall
- o. Aluminum Framing with 3 1/2" Header Above

FLOOR R-VALUE = 16

- p. Carpet/Tile
- q. Carpet Padding
- r. 5/8" Floor Decking
- s. Fiberglass Batten Insulation
- t. 2"x 3" Wood Framing
- u. Polyethylene Moisture Barrier

BASEMENT R-VALUE = 4

- v. Cargo Liner
- w. 3/8" Floor Decking
- x. 3/16" Luan Panel
- y. 1 1/2" Bead Foam
- z. Aluminum Sheeting with Steel Support Rails to Prevent Bowing and Flexing

- 1. 15M Penguin™ Heat Pump Central Air Conditioners (3)
- 2. One-Piece Bonded Windshield
- 3. Coated Aluminum Wheels
- 4. Frameless, Double-Pane, Tinted Safety-Glass Windows
- 5. Side-Hinged Baggage Doors

Floor Plan	Engine HP	Axle Ratio	Fuel Cap.	Wheel Base	Front GAWR*	Rear GAWR*	Tag GAWR*	GVWR*	GCWR*	App. UVW	App. NCC
4501	600	4.30	200 gal.	292+TAG	20,000 lb.	20,000 lb.	14,000 lb.	54,000 lb.	74,000 lb.	46,200 lb.	7,800 lb.
4503	600	4.30	200 gal.	292+TAG	20,000 lb.	20,000 lb.	14,000 lb.	54,000 lb.	74,000 lb.	46,400 lb.	7,600 lb.
4553	600	4.30	200 gal.	292+TAG	20,000 lb.	20,000 lb.	14,000 lb.	54,000 lb.	74,000 lb.	46,400 lb.	7,600 lb.
4568	600	4.30	200 gal.	292+TAG	20,000 lb.	20,000 lb.	14,000 lb.	54,000 lb.	74,000 lb.	46,200 lb.	7,800 lb.
4599	600	4.30	200 gal.	292+TAG	20,000 lb.	20,000 lb.	14,000 lb.	54,000 lb.	74,000 lb.	46,200 lb.	7,800 lb.

Lengths, heights, widths and dry weights are approximate. Weight will vary based on optional equipment added to the above base weight.

GAWR: Gross Axle Weight Rating is the maximum permissible weight for an axle.

GVWR: Gross Vehicle Weight Rating is the maximum permissible weight for a fully loaded motor coach.

GCWR: Gross Combination Weight Rating is the value specified by the manufacturer of the vehicle as the maximum allowable loaded weight of this motor coach and any towed trailer or towed vehicle.

UVW: Unloaded Vehicle Weight is the weight of this motor coach as built at the factory with full fuel, engine oil and coolants. The UVW does not include cargo, fresh water, propane gas or dealer-installed accessories.

NCC: Net Carrying Capacity is the maximum weight of all occupants, including the driver, personal belongings, food, fresh water, waste water, propane gas, tools, tongue weight of towed vehicle, dealer-installed accessories, etc., that can be carried by the motor coach.

*Specifications supplied by the chassis manufacturer.

FEATURES & OPTIONS



Chassis Features

Built specifically for Newmar with the highest quality in handling, safety, performance and dependability.

Spartan® K3 Passive Steer Tag Axle Chassis with 600Hp Cummins® ISX Engine
Allison® 4000 MH Transmission

Comfort Drive™ Steering with Power Column and Adjustable Control

Alcoa Dura-Brite™ Aluminum Wheels

Hydraulic Leveling Jacks

Power Tilt-and-Telescope VIP Smart Wheel with Black Leather

Memory Settings for Drivers Seat, Pedals, Steering Column and Exterior Mirrors

Recessed Fuel Fills with Crossover to Fill from Either Side

Anti-Lock Braking System

Electronic Chassis Information Center in Dash

Tire Pressure Monitor System

Air Leveling Control System

Trip Travel Information, Displayed Onto Rear View Monitor Screen

OPTIONS

Vorad® Adaptive Cruise System



Air Conditioning & Heating

Total Comfort Air Conditioning and Hydronic Zone Heating systems make climate control simple and effective.

Three 15M Penguin™ Heat Pump Central Air Conditioners with Remote Control Thermostat

Hydronic Zone Heating System

Roof Air Conditioning Drainage System

Driver/Passenger Dash Overhead Ventilation System

OPTIONS

Electric Heat Under Floor Tile



Appliances

All of the amenities of a fine home are integrated in the Newmar design, in form and capabilities.

30" GE® Profile Advantium Microwave with Two Burner Gas Cooktop

Whirlpool® Stainless Steel 19.8 Cf. Refrigerator with Icemaker and Water Dispenser

Dometic® Freezer on Pullout Tray

Whirlpool® Two Piece Stacked Washer and Dryer

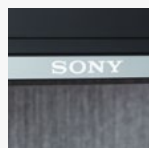
Central Vacuum with Tool Kit

Dishwasher in a Drawer Below Cooktop

OPTIONS

All-Electric with Flush Kenyon Cooktop and Eight Extra Batteries

All-Electric with Flush Induction Cooktop and Eight Extra Batteries



Audio, Video, & Accessories

Stay entertained on the road and off, with spectacular visual and sound options from industry leaders.

Sony® LED TV & Blu-Ray DVD Player in Living and Bedroom Areas*

Sony® 48" LED TV on Televator in Living Area*

External Entertainment Center in Storage Compartment with Sony 40" LED TV and Soundbar

Sony® Surround Sound System with Bose Acoustimass Speaker System & Sub-Woofer

Sony® Tablet with Control of AV Equipment, Lights, Shades, Keyless Entry and Silverleaf App

Bose® Solo Speaker with Bluetooth® Adapter in Bedroom

Dash Radio with Touch Screen Navigation, Dual Monitors, Speakers and Sub-Woofer

High Definition component Wiring

Sirius® Satellite Radio-Ready with Antenna (Does not include SIRIUS® Monthly Subscription)

Satellite Dish Prep on Roof

Winegard® Power Lift Digital TV Antenna

Infra-Red Reapter® System to Operate Audio/Video Components

Wireless Router

Cellular Remote Access

OPTIONS

Sony® 40" LED TV in Front Overhead Cabinet

Sony® 48" LED TV on Televator Behind Non-Sleeper Fixed Sofa*

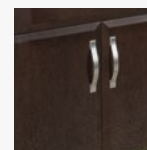
Exterior Entertainment Center in Sidewall with Sony® 40" LED TV in place of Standard

Remote-Controlled Rearview Color Camera

Satellite Dish without Receiver*

Security System

Extra Monitor for Navigation System on Passenger Side



Cabinets & Furniture

Amish craftsmanship and elegance in design meld the wood cabinetry and furniture seamlessly with the Newmar interior.

Sable Maple Hardwood Cabinets with High Gloss Finish and Full Overlay Doors

Polished Solid Surface Countertops Throughout Living Area, Kitchen, and Bedroom with undermount stainless glass sinks

Polished Solid Surface Countertop in Bathroom with Vessel Sinks in Master Bathroom

Drawers with Dove Tail Sides with Self Closing Full Ball Bearing Guides

Villa™ Furniture

Heated Front Seats with Power Lumbar, Footrest, Recline & Oversized Passenger Seat

Cedar Paneling in Rear Wardrobe

Passenger Seat Work Station

Sleep Number® Premier Air Mattress

Power Sofa in Door Side Slideout on 4582, 4584 Floorplans

OPTIONS

Manhattan Glazed Maple High Gloss Hardwood Cabinets

Rattan Maple Glazed High Gloss Hardwood Cabinets

Ginger Glazed Cherry High Gloss Hardwood Cabinets

Villa™ Ultra Leather Sofa/Dinette Ensemble with Two Folding Chairs*

Off Door Side Two Swivel Wall Hugger Recliners with Lamp Stand

Extenda "L" Sofa on off Door Side*

Villa™ Extenda Flex Dinette with Two Folding Chairs*

Villa™ Sofa/Euro Booth Dinette Ensemble with Two Folding Chairs*

Power Flip Up Sofa in Bed Base*

Massage Feature Added to Driver/Passenger Seats

Door side 48" Televator TV, Off Door Side Extenda L Sofa, Villa Euro booth Dinette and Overhead Cabinet

Door Side 68" Dormi Sofa with Air Mattress*

Door Side 46" Televator TV, Off Door Side Extenda L sofa, Desk/Buffer Dinette and Overhead Cabinet

Door Side 46" Televator TV, Off Door Side Extenda L Sofa, Villa™ U-Dinette and Overhead Cabinet

Third Bunk with 11" Flip Down LCD Monitor/DVD Player

Power Incline Retracting Bed Base

Power Incline Head of Bed

Combination Desk/Dinette with Buffet with Two Fixed/Two Folding Chairs



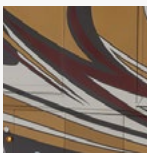
Electrical Features

A Newmar coach's electrical and lighting system is designed for maximum reliability, functionality, and style.

12.5 kW Cummins Onan® Diesel Quiet Generator on Hydraulic Slide and Auto Changeover
50 Amp Electrical Service with Flexible Cord and Automatic Transfer Switch
Eight 6-Volt AGM House Batteries on Pullout Tray
5 Watt Solar Panel to Charge Chassis Battery
Solar Prep Wire from Roof to Charge House Batteries
Two 3000 Watt Pure Sine Inverters
Engine Block Heater
LED Recessed Lighting in Ceiling and Overhead Cabinets
Exterior LED Accent Lights Below Door Side Slideout & Perimeter of Unit
LED Lights in Exterior Storage Compartments on Automatic Switches
Exterior LED Accent Lights Above Rear Tow Guard
Rear Hitch Docking Light
Accent Lights in Ceiling, Lambrequins, Kitchen, Bed Base, Fascia Trim & Under Dash
Silverleaf® Multiplex Control System
12-Volt Auxiliary Recept on Dashboard
110-Volt Exterior Recept
Automatic Generator Start on Low Battery or Temperature Setting
WiFi/Cellular Interface for Keyless Entry and Air Conditioning
Recept with Built in USB Charger at Dinette and Bedroom Dresser Cabinet
Secondary Multiple Touch Screen in Bedroom
20K Rear Hitch for Towing

OPTIONS

Roof-Mounted Spot Light
Six Sunforce Flexible 95-Watt Solar Panels on Roof



Exterior Features

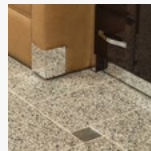
The Full-Paint Masterpiece Finish is one of the most beautiful and durable in the industry.

Full-Paint Masterpiece™ Cut & Buff Finish with Nano Shield Protection on Front Cap
Exterior Painted Graphics
Convex Exterior Chrome Mirrors with Remote Control, Defrost, Turn Signals & Side View Cameras
Stainless Steel Trim Pieces

Dual Latch Front Door with Power Flush Stepwell Cover
Power Baggage Door Locks, Keyless Entrance Door with Touch Pad and Door Bell
Exterior Baggage Doors with Power Locks*
Mechanical Lock Arms on All Slideout Rooms
Holding Tank Levels Displayed in Exterior Water Works Compartment
Lighted Exterior Storage Compartments with Cargo Liner
Stainless Steel Kick Panel at Entrance Door
Rear Protective Stainless tow Guard
Large Storage Tray
Two Power Sliding Storage Trays
Powered Door Lift for Engine Access

OPTIONS

Stainless Steel Trim Kit for Exterior Compartment Doors



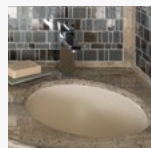
Interior Features

Flooring – both tile and carpet – is installed with Newmar's own in-house process, ensuring the best in quality and longevity, as well as the finest fit.

Designer Feature Ceiling
Auto Motion Power Window Shades and Lambrequins
Auto Motion Power Shades for Windshield and Driver/Passenger Side Windows
Polished Solid Surface Window Sills
Polished Porcelain Floor Tile in Kitchen, Bedroom and Living Areas, Carpet in Slideouts
Kitchen Accent Rug
Removable Transport Pads for Under Slideout Rollers
Shoe Storage Shelves Recessed into Rear Cap Wardrobe
Interior Assist handle at Main Entry Door
Safe Located in Bedroom Wardrobe
Quilted Bedspread, Bedscarf and Accent Pillows
10 Bc fire Extinguisher, Carbon Monoxide and Smoke Detectors

OPTIONS

Power Silhouette Window Shades
Traditional Style Passage, Wardrobe, Cabinet Doors & Pulls, Slideout Fascia Trim and Headboard
Carpet in Bedroom in Place of Tile



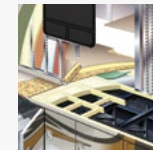
Plumbing & Bath Features

The Demand Water Systems residential flow response ensures that the comfort and reliability of home are never far away.

Demand Water System
Dometic® Concerto electric Flush or Macerator China Bowl Stool*
Solid Surface Shower Walls with Mosaic Tile Walls
Systems Monitor Panel
MANABLOC® Plumbing System
Auto Water-Fill System
Stainless Steel Front with Diamond Shield Protection on Exterior Convenience Wash Station
Touchless Faucet and Dispenser at Kitchen Sink
UV/Carbon Filter Draining Water Purifier with Dedicated Kitchen Faucet
Power Dump Valves for Holding Tanks

OPTIONS

RV Sanicon System
Black China Bowl Stools



Construction Features

From the Chassis on up, Newmar coaches are built to be dependable, durable, comfortable, and beautiful.

5/8" Foam Insulation Laminated in Sidewalls and Ceiling
Gelcoated Fiberglass Exterior Sidewalls, Front and Rear Caps
Aluminum-Frame Sidewalls and Roof Construction, 16" on Center
Fiberglass Roof with Walkable Decking and Integrated Gutter Rail
Polar Pak R19 Batten insulation in Roof



Windows, Awnings & Vents

Experience as much – or as little – of the outdoors as you want in comfort and style.

Frameless Double-Pane Tinted Safety-Glass Windows
Fan-Tastic® Vent with Rain Sensor in Kitchen Area and Bathroom
Driver's-Side Power Window
Girard® Slideout Covers, Power Awnings on Windows and Entrance Door
Two Girard® Nova Power Side Awnings with Wind Sensor, Remote Control & LED Lights
One Piece Tinted Windshield
Skylight Above Shower

OPTIONS

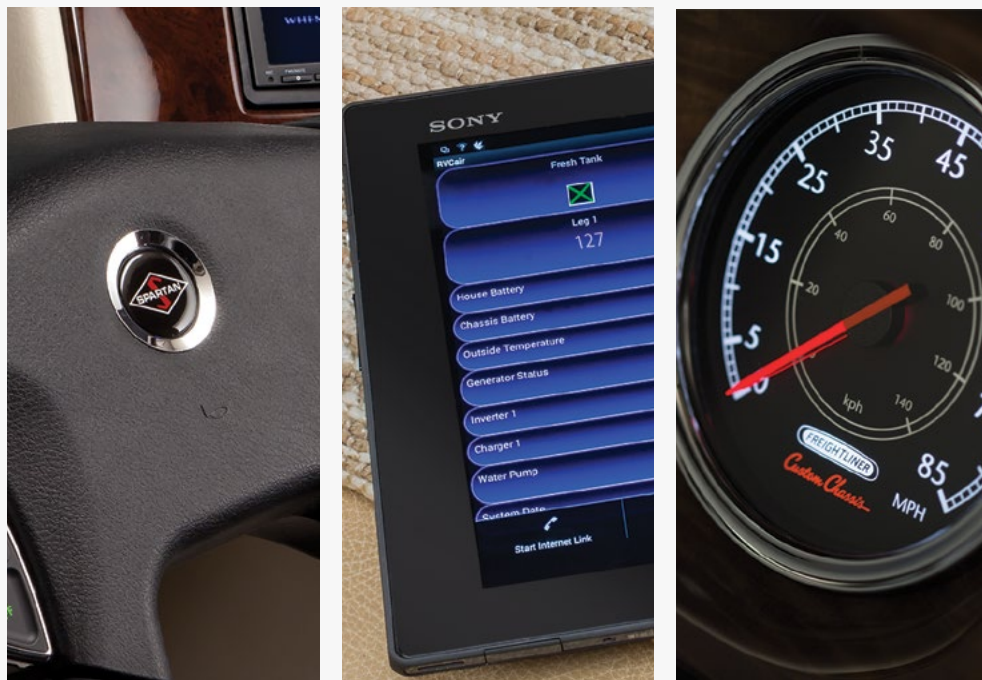
Large Window Above Bed Concealed Behind Sliding Doors

*Check With Dealership On Floorplan Availability

OUR PARTNERS

WHERE THE FINEST NAMES IN QUALITY AND PERFORMANCE ARE ALONG FOR THE RIDE.

To assure that you experience only the best in comfort, control and unsurpassed convenience in our incomparable family of Luxury Coaches, Newmar partners with the most prestigious names in mobile lifestyle, entertainment and technology. These brands are leaders in their fields – and legends in providing customers with new, unsurpassed levels of quality and reliability. Best in class performance from names you can trust. At Newmar, that's our difference. And our promise.



TRUST

THE STRONGEST POSSIBLE FOUNDATION FOR A MOTOR COACH.

According to Newmar president Matthew Miller, “Customers say they’re loyal to us because they trust us to stand behind our products – from support, parts and service to paying our warranties. It feels good to own a coach that has all of that behind it.”

How do we sustain this high level of service? At Newmar, there’s a Miller way of doing things. These principles guide us every day. Courtesy. Integrity. And reliability. So when you buy from Newmar, you know that every single person who touches your coach or talks with you has your back. Period.



Matthew Miller, Newmar President, lifelong motor coach enthusiast.



2015 KING AIRE

NEWMAR EXPRESS LIMITED WARRANTY

Every King Aire Diesel motor coach is backed by Newmar's one-year limited warranty/unlimited miles. Ask your Newmar dealer for details.

NEWMAR EXPRESS LIMITED WARRANTY

If any part of your Newmar recreational vehicle superstructure (which is the steel/aluminum structure of the sidewall, roof or frame) fails to perform properly within five years from the date of purchase because of faulty workmanship or material supplied by Newmar, it will be repaired without charge for either parts or labor by Newmar. This structural warranty is available only to the original purchaser and is non-transferable.

Some features in our literature are optional. Colors and finishes are photographic representations. The actual materials may look different. Prices, specifications and floor plans are subject to change at Newmar's discretion, without prior notice or obligation. Please see your dealer for actual samples and specifications.



WHEN YOU KNOW THE DIFFERENCE SM